

Data Path : Z:\pestpcbsrv\HPCHEM1\ECD_L\Data\PL041421\
 Data File : PL066128.D
 Signal(s) : Signal #1: ECD1A.ch Signal #2: ECD2B.ch
 Acq On : 14 Apr 2021 16:33
 Operator : AR\AJ
 Sample : M2010-01
 Misc :
 ALS Vial : 29 Sample Multiplier: 1

Instrument :
 ECD_L
ClientSampled :
 CG-SP

Manual Integrations
APPROVED
 Ankita
 4/15/2021 12:07:47 PM

Integration File signal 1: autoint1.e
 Integration File signal 2: autoint2.e
 Quant Time: Apr 15 01:14:17 2021
 Quant Method : Z:\pestpcbsrv\HPCHEM1\ECD_L\methods\PL041421.M
 Quant Title : GC Extractables
 QLast Update : Wed Apr 14 15:37:20 2021
 Response via : Initial Calibration
 Integrator: ChemStation

Volume Inj. : 1 µl
 Signal #1 Phase : ZB-MR2 Signal #2 Phase: ZB-MR1
 Signal #1 Info : 30M x 0.32mm x0.2 Signal #2 Info : 30M x 0.32mm x0.5µm

Compound	RT#1	RT#2	Resp#1	Resp#2	ng/ml	ng/ml

System Monitoring Compounds						
1) SA Tetrachlo...	3.444	4.154	46852139	74653073	18.407m	18.559
28) SA Decachlor...	8.170	9.352	50292023	71008939	21.084	21.743

Target Compounds

(f)=RT Delta > 1/2 Window (#)=Amounts differ by > 25% (m)=manual int.

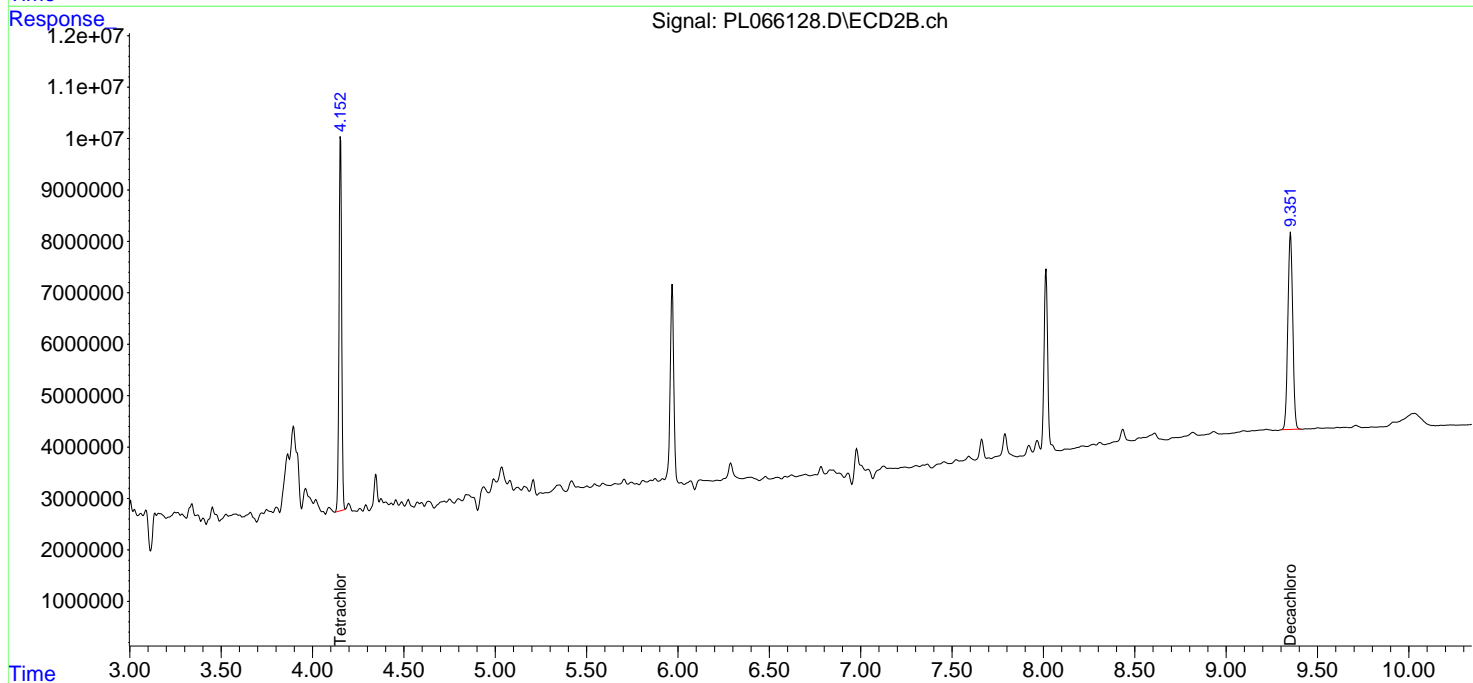
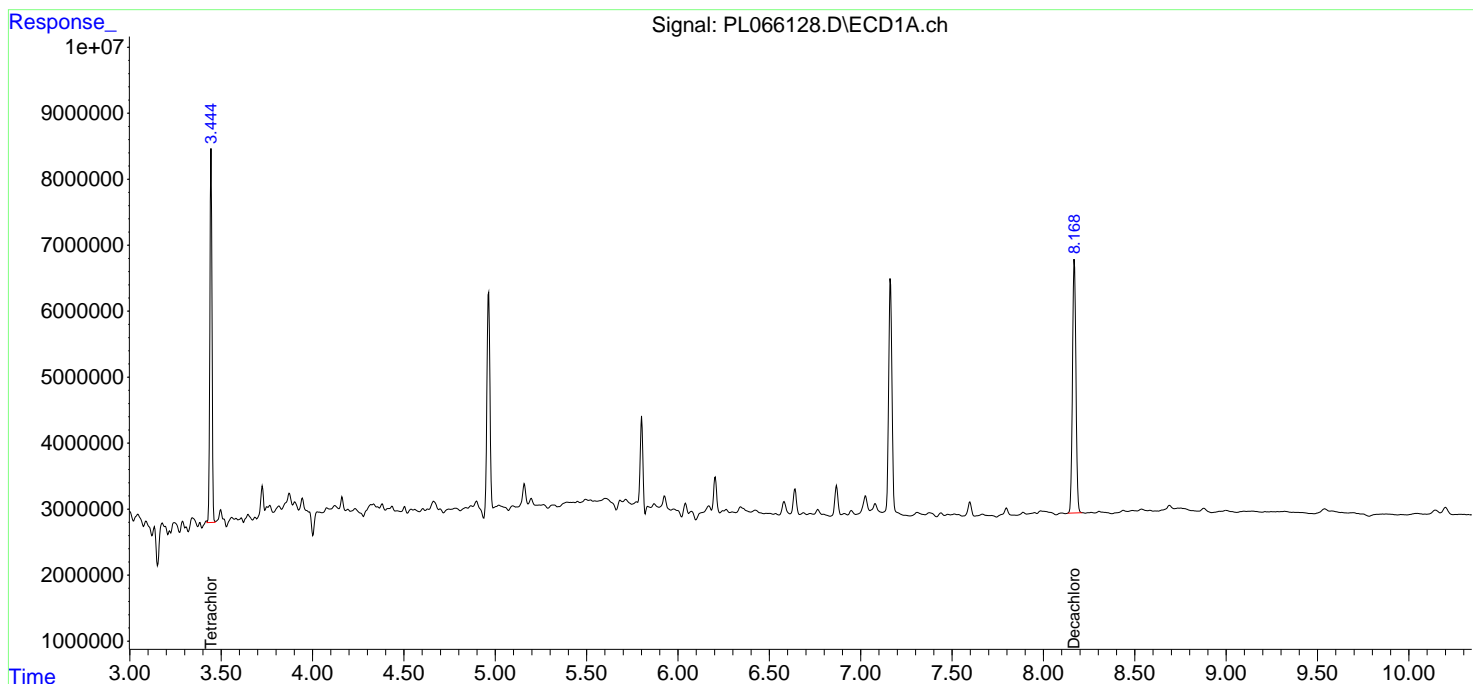
Data Path : Z:\pestpcbsrv\HPCHEM1\ECD_L\Data\PL041421\
 Data File : PL066128.D
 Signal(s) : Signal #1: ECD1A.ch Signal #2: ECD2B.ch
 Acq On : 14 Apr 2021 16:33
 Operator : AR\AJ
 Sample : M2010-01
 Misc :
 ALS Vial : 29 Sample Multiplier: 1

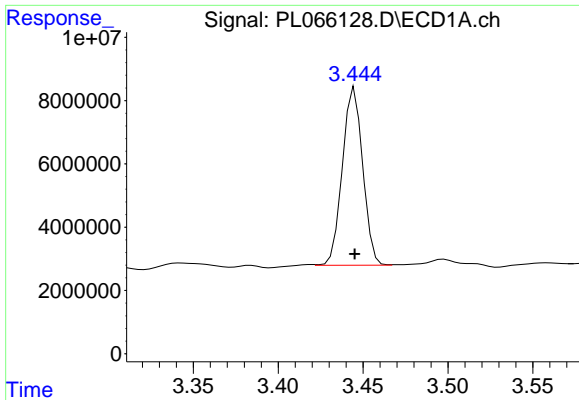
Instrument :
 ECD_L
Client Sampled :
 CG-SP

Manual Integrations
APPROVED
 Ankita
 4/15/2021 12:07:47 PM

Integration File signal 1: autoint1.e
 Integration File signal 2: autoint2.e
 Quant Time: Apr 15 01:14:17 2021
 Quant Method : Z:\pestpcbsrv\HPCHEM1\ECD_L\methods\PL041421.M
 Quant Title : GC Extractables
 QLast Update : Wed Apr 14 15:37:20 2021
 Response via : Initial Calibration
 Integrator: ChemStation

Volume Inj. : 1 µl
 Signal #1 Phase : ZB-MR2 Signal #2 Phase: ZB-MR1
 Signal #1 Info : 30M x 0.32mm x0.2 Signal #2 Info : 30M x 0.32mm x0.5µm

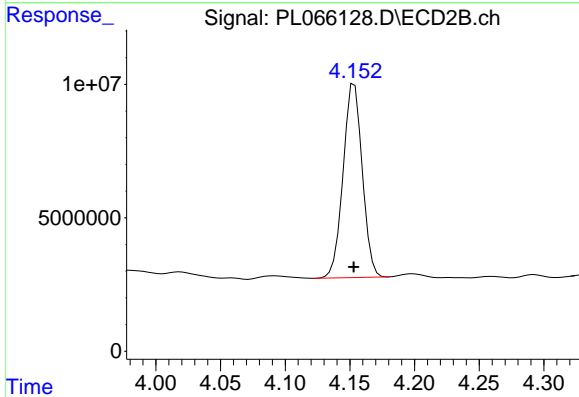




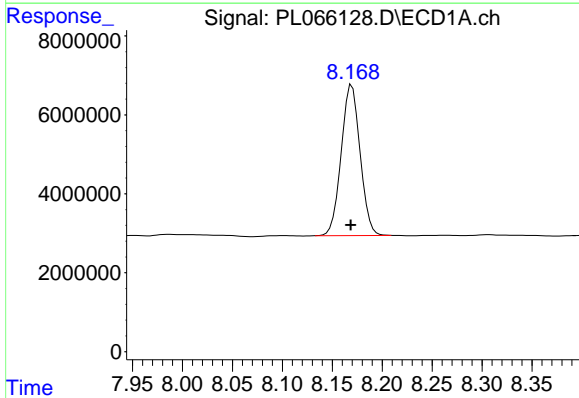
#1 Tetrachloro-m-xylene
 R.T.: 3.444 min
 Delta R.T.: -0.001 min
 Response: 46852139
 Conc: 18.41 ng/ml m

Instrument :
 ECD_L
 ClientSampled :
 CG-SP

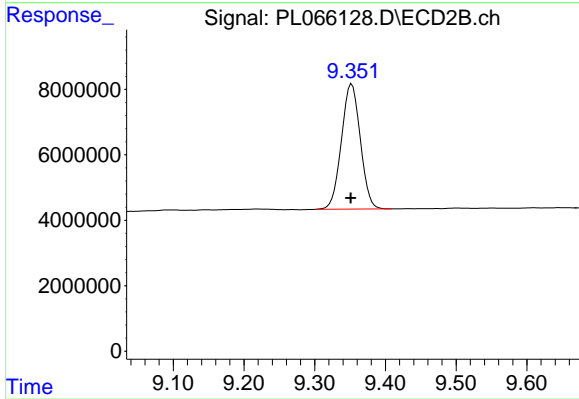
Manual Integrations
 APPROVED
 Ankita
 4/15/2021 12:07:47 PM



#1 Tetrachloro-m-xylene
 R.T.: 4.154 min
 Delta R.T.: 0.000 min
 Response: 74653073
 Conc: 18.56 ng/ml



#28 Decachlorobiphenyl
 R.T.: 8.170 min
 Delta R.T.: 0.001 min
 Response: 50292023
 Conc: 21.08 ng/ml



#28 Decachlorobiphenyl
 R.T.: 9.352 min
 Delta R.T.: 0.002 min
 Response: 71008939
 Conc: 21.74 ng/ml