

Data Path : Z:\pestpcbsrv\HPCHEM1\ECD_L\Data\PL041421\
 Data File : PL066140.D
 Signal(s) : Signal #1: ECD1A.ch Signal #2: ECD2B.ch
 Acq On : 14 Apr 2021 20:23
 Operator : AR\AJ
 Sample : I.BLK
 Misc :
 ALS Vial : 2 Sample Multiplier: 1

Instrument :
 ECD_L
 ClientSampleId :
 I.BLK

Integration File signal 1: autoint1.e
 Integration File signal 2: autoint2.e
 Quant Time: Apr 15 01:17:54 2021
 Quant Method : Z:\pestpcbsrv\HPCHEM1\ECD_L\methods\PL041421.M
 Quant Title : GC Extractables
 QLast Update : Wed Apr 14 15:37:20 2021
 Response via : Initial Calibration
 Integrator: ChemStation

Volume Inj. : 1 µl
 Signal #1 Phase : ZB-MR2 Signal #2 Phase: ZB-MR1
 Signal #1 Info : 30M x 0.32mm x0.2 Signal #2 Info : 30M x 0.32mm x0.5µm

Compound	RT#1	RT#2	Resp#1	Resp#2	ng/ml	ng/ml

System Monitoring Compounds						
1) SA Tetrachlo...	3.446	4.154	49503264	80900332	19.449	20.112
28) SA Decachlor...	8.170	9.353	48892179	68220602	20.498	20.889

Target Compounds

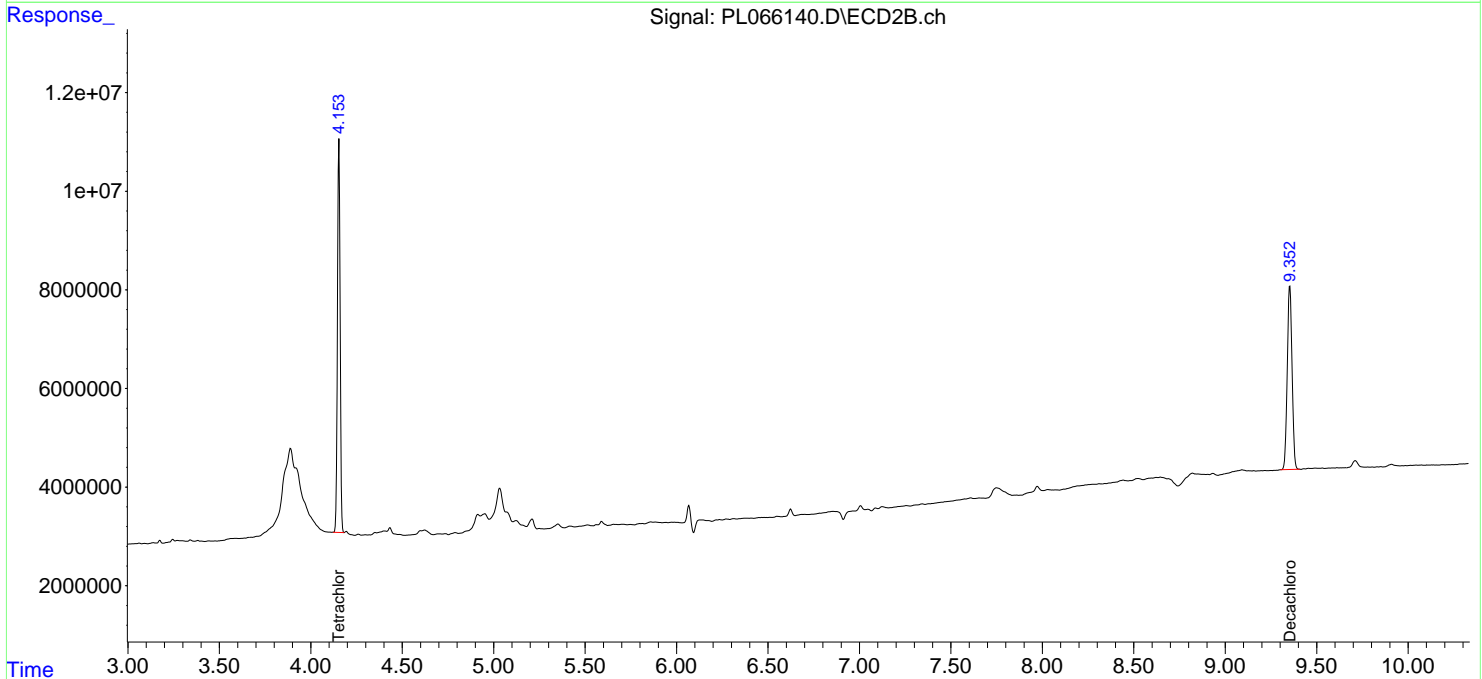
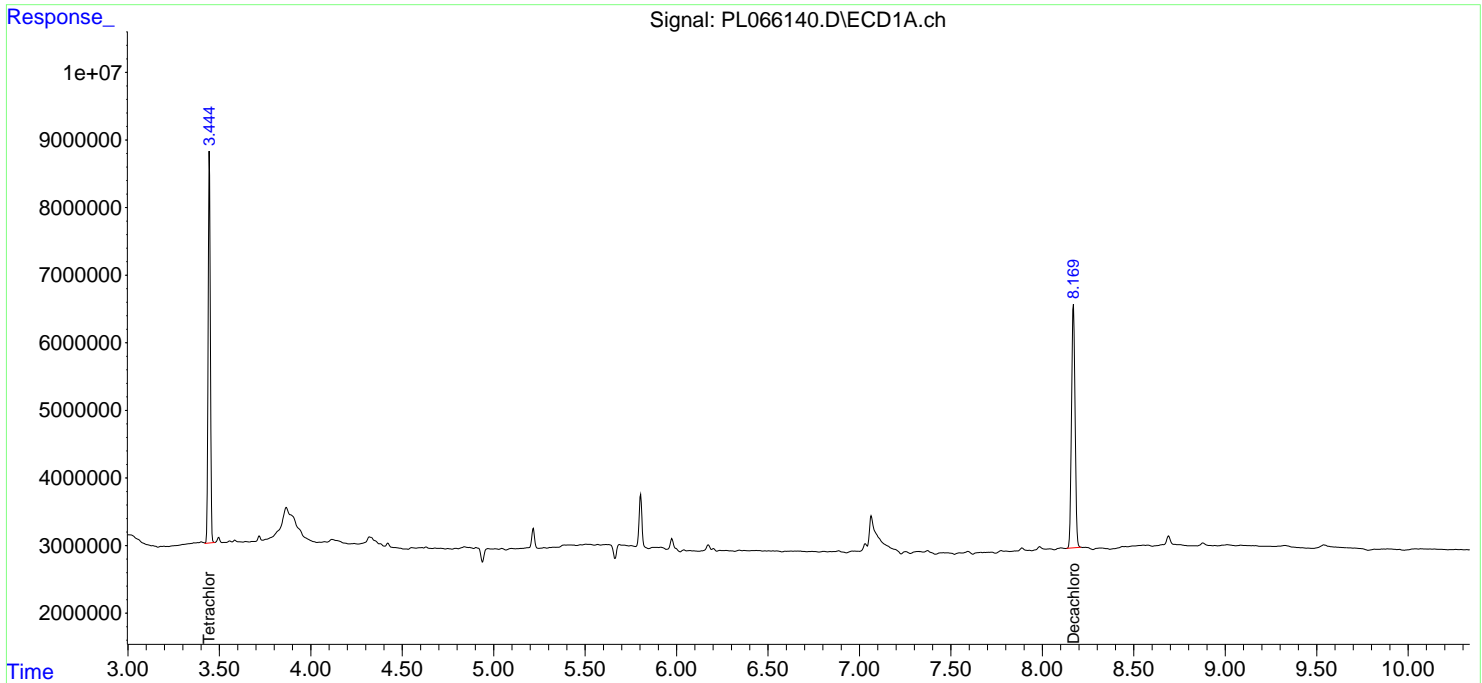
 (f)=RT Delta > 1/2 Window (#)=Amounts differ by > 25% (m)=manual int.

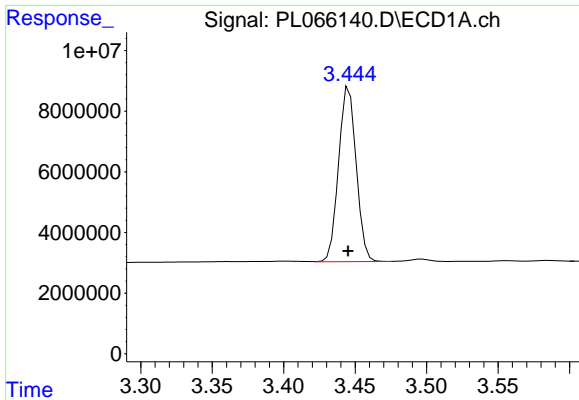
Data Path : Z:\pestpcbsrv\HPCHEM1\ECD_L\Data\PL041421\
 Data File : PL066140.D
 Signal(s) : Signal #1: ECD1A.ch Signal #2: ECD2B.ch
 Acq On : 14 Apr 2021 20:23
 Operator : AR\AJ
 Sample : I.BLK
 Misc :
 ALS Vial : 2 Sample Multiplier: 1

Instrument :
 ECD_L
 ClientSampled :
 I.BLK

Integration File signal 1: autoint1.e
 Integration File signal 2: autoint2.e
 Quant Time: Apr 15 01:17:54 2021
 Quant Method : Z:\pestpcbsrv\HPCHEM1\ECD_L\methods\PL041421.M
 Quant Title : GC Extractables
 QLast Update : Wed Apr 14 15:37:20 2021
 Response via : Initial Calibration
 Integrator: ChemStation

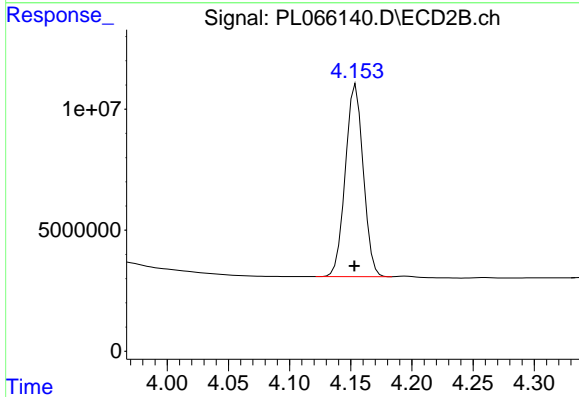
Volume Inj. : 1 µl
 Signal #1 Phase : ZB-MR2 Signal #2 Phase: ZB-MR1
 Signal #1 Info : 30M x 0.32mm x0.2 Signal #2 Info : 30M x 0.32mm x0.5µm



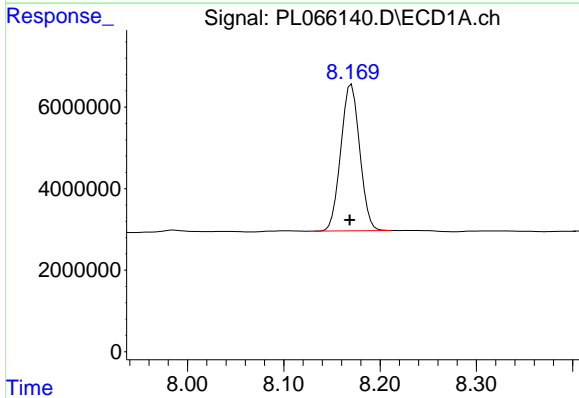


#1 Tetrachloro-m-xylene
 R.T.: 3.446 min
 Delta R.T.: 0.000 min
 Response: 49503264
 Conc: 19.45 ng/ml

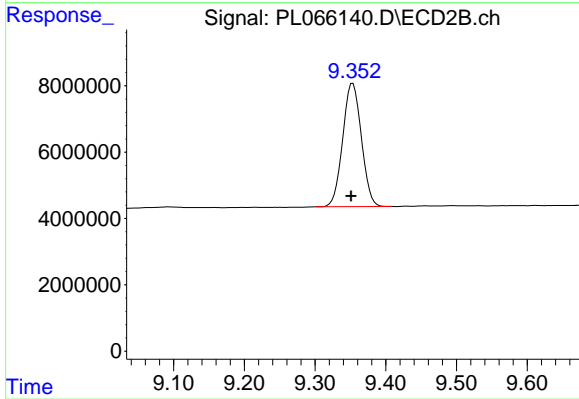
Instrument :
 ECD_L
 ClientSampled :
 I.BLK



#1 Tetrachloro-m-xylene
 R.T.: 4.154 min
 Delta R.T.: 0.001 min
 Response: 80900332
 Conc: 20.11 ng/ml



#28 Decachlorobiphenyl
 R.T.: 8.170 min
 Delta R.T.: 0.002 min
 Response: 48892179
 Conc: 20.50 ng/ml



#28 Decachlorobiphenyl
 R.T.: 9.353 min
 Delta R.T.: 0.002 min
 Response: 68220602
 Conc: 20.89 ng/ml