

Data Path : Z:\pestpcbsrv\HPCHEM1\ECD_L\Data\PL041421\
 Data File : PL066152.D
 Signal(s) : Signal #1: ECD1A.ch Signal #2: ECD2B.ch
 Acq On : 14 Apr 2021 23:44
 Operator : AR\AJ
 Sample : PSTDCCC050
 Misc :
 ALS Vial : 4 Sample Multiplier: 1

Instrument :
 ECD_L
Client Sampled :
 PSTDCCC050

Manual Integrations
APPROVED
 Ankita
 4/15/2021 12:08:33 PM

Integration File signal 1: autoint1.e
 Integration File signal 2: autoint2.e
 Quant Time: Apr 15 01:27:38 2021
 Quant Method : Z:\pestpcbsrv\HPCHEM1\ECD_L\methods\PL041421.M
 Quant Title : GC Extractables
 QLast Update : Wed Apr 14 15:37:20 2021
 Response via : Initial Calibration
 Integrator: ChemStation

Volume Inj. : 1 µl
 Signal #1 Phase : ZB-MR2 Signal #2 Phase: ZB-MR1
 Signal #1 Info : 30M x 0.32mm x0.2 Signal #2 Info : 30M x 0.32mm x0.5µm

	Compound	RT#1	RT#2	Resp#1	Resp#2	ng/ml	ng/ml

System Monitoring Compounds							
1)	SA Tetrachlo...	3.446	4.154	124.5E6	211.5E6	48.932	52.568
28)	SA Decachlor...	8.170	9.353	102.1E6	144.0E6	42.804	44.105
Target Compounds							
2)	A alpha-BHC	3.881	4.559	207.7E6	311.5E6	50.471	53.637
3)	MA gamma-BHC...	4.161	4.853	197.5E6	281.6E6	50.686	52.892
4)	MA Heptachlor	4.460	5.369	196.9E6	266.8E6	47.466	47.937
5)	MB Aldrin	4.705	5.681	200.0E6	250.1E6	51.072	50.133
6)	B beta-BHC	4.409	5.028	86573094	132.3E6	49.125	53.135
7)	B delta-BHC	4.610	5.252	206.3E6	267.4E6	50.005	51.995
8)	B Heptachlo...	5.144	6.075	182.2E6	217.9E6	49.162	47.168
9)	A Endosulfan I	5.477	6.440	182.7E6	200.3E6	51.026	47.858
10)	B gamma-Chl...	5.369	6.311	193.7E6	223.6E6	52.315	49.002m
11)	B alpha-Chl...	5.426	6.385	190.3E6	219.0E6	51.385	48.444
12)	B 4,4'-DDE	5.592	6.541	189.2E6	197.1E6	50.727	47.628
13)	MA Dieldrin	5.719	6.701	198.7E6	200.3E6	49.043	47.932
14)	MA Endrin	5.972	6.924	171.1E6	139.4E6	49.066	43.143
15)	B Endosulfa...	6.244	7.137	152.7E6	160.2E6	46.498	45.956
16)	A 4,4'-DDD	6.104	7.040	157.0E6	165.1E6	47.684	48.257
17)	MA 4,4'-DDT	6.342	7.342	136.9E6	138.4E6	42.959	40.804
18)	B Endrin al...	6.411	7.263	116.9E6	126.8E6	45.346	45.338
19)	B Endosulfa...	6.622	7.487	154.3E6	158.2E6	44.893	44.774
20)	A Methoxychlor	6.888	7.802	72685158	72548715	40.146	40.487
21)	B Endrin ke...	7.108	7.969	163.6E6	169.8E6	44.493	46.152
22)	Mirex	7.297	8.424	118.9E6	120.9E6	41.563	42.695

(f)=RT Delta > 1/2 Window (#)=Amounts differ by > 25% (m)=manual int.

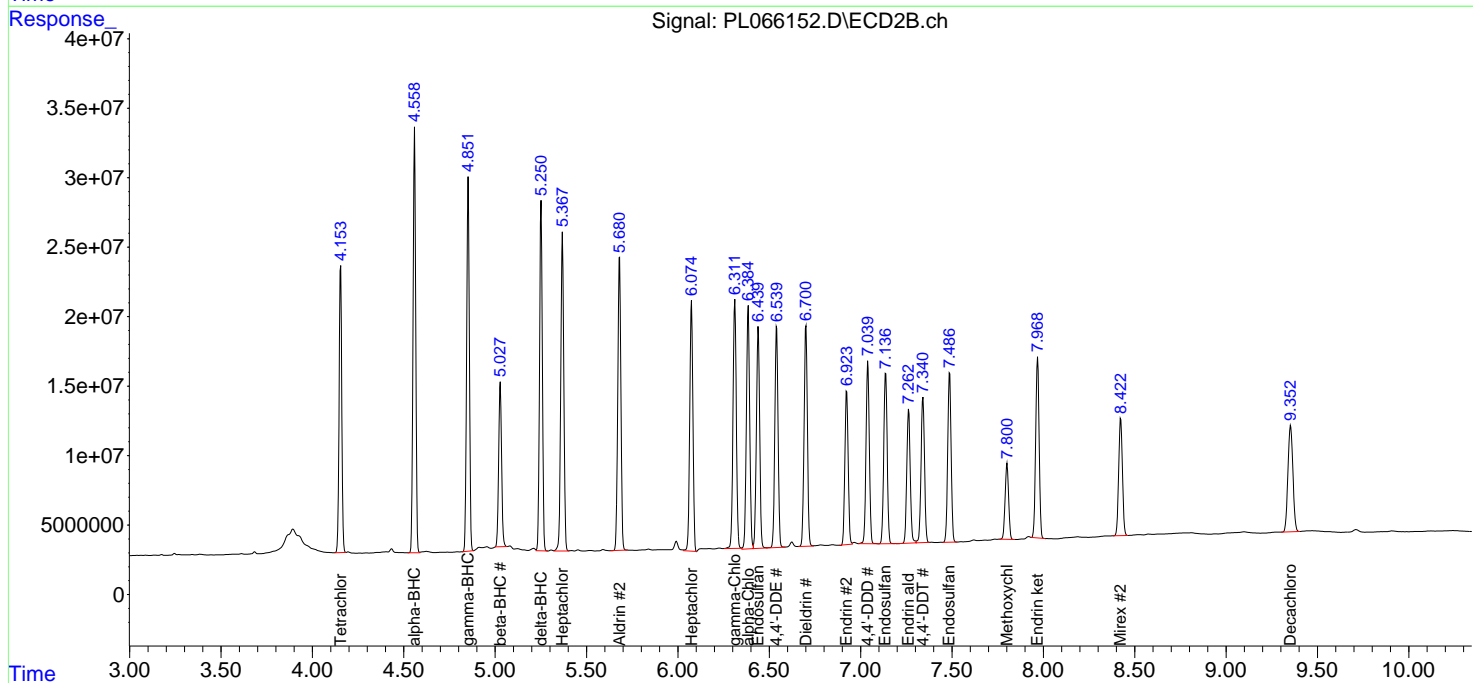
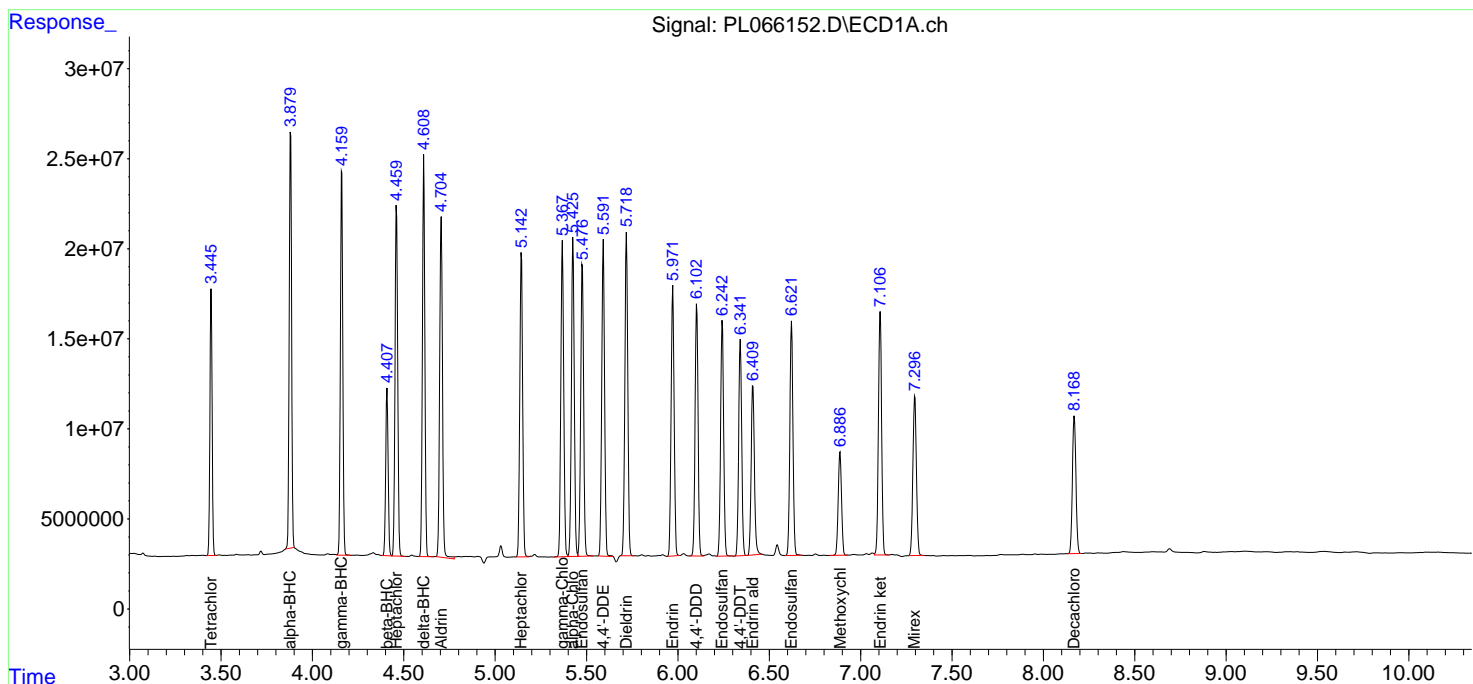
Data Path : Z:\pestpcbsrv\HPCHEM1\ECD_L\Data\PL041421\
 Data File : PL066152.D
 Signal(s) : Signal #1: ECD1A.ch Signal #2: ECD2B.ch
 Acq On : 14 Apr 2021 23:44
 Operator : AR\AJ
 Sample : PSTDCCC050
 Misc :
 ALS Vial : 4 Sample Multiplier: 1

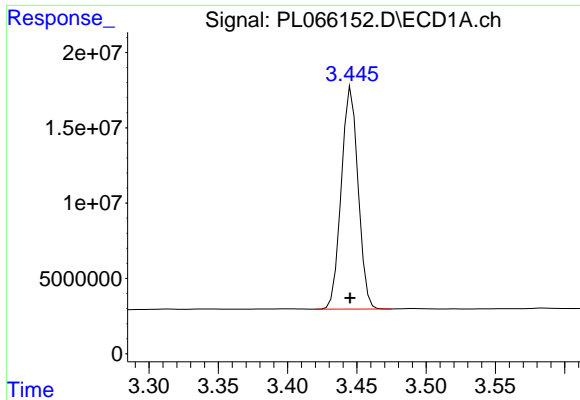
Instrument :
 ECD_L
 Client Sampled :
 PSTDCCC050

Manual Integrations
APPROVED
 Ankita
 4/15/2021 12:08:33 PM

Integration File signal 1: autoint1.e
 Integration File signal 2: autoint2.e
 Quant Time: Apr 15 01:27:38 2021
 Quant Method : Z:\pestpcbsrv\HPCHEM1\ECD_L\methods\PL041421.M
 Quant Title : GC Extractables
 QLast Update : Wed Apr 14 15:37:20 2021
 Response via : Initial Calibration
 Integrator: ChemStation

Volume Inj. : 1 µl
 Signal #1 Phase : ZB-MR2 Signal #2 Phase: ZB-MR1
 Signal #1 Info : 30M x 0.32mm x0.2 Signal #2 Info : 30M x 0.32mm x0.5µm

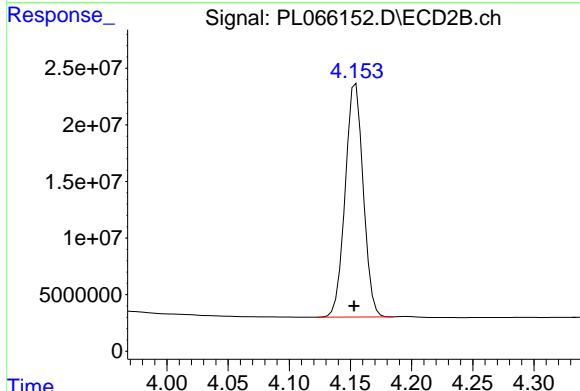




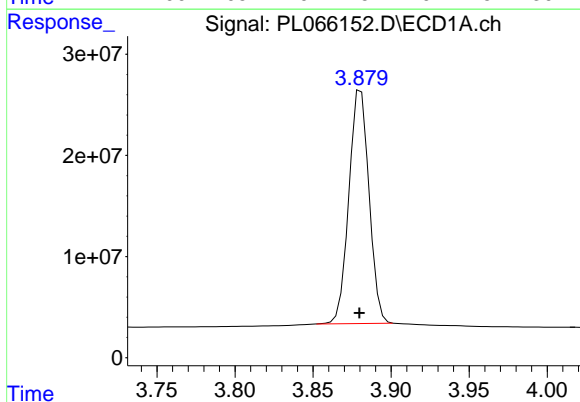
#1 Tetrachloro-m-xylene
 R.T.: 3.446 min
 Delta R.T.: 0.001 min
 Response: 124546228
 Conc: 48.93 ng/ml

Instrument :
 ECD_L
ClientSampled :
 PSTDCCC050

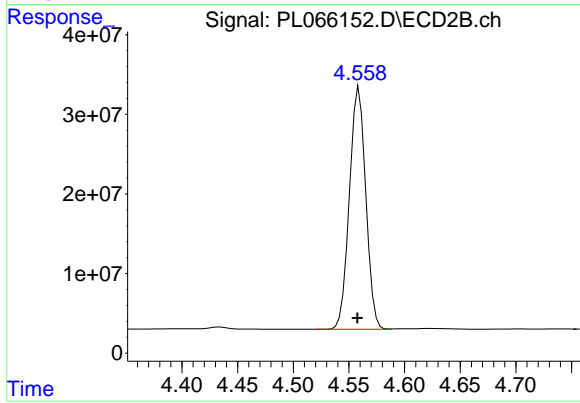
Manual Integrations
APPROVED
 Ankita
 4/15/2021 12:08:33 PM



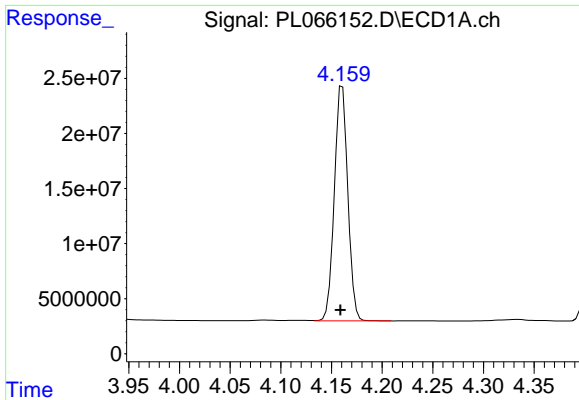
#1 Tetrachloro-m-xylene
 R.T.: 4.154 min
 Delta R.T.: 0.002 min
 Response: 211457005
 Conc: 52.57 ng/ml



#2 alpha-BHC
 R.T.: 3.881 min
 Delta R.T.: 0.001 min
 Response: 207674746
 Conc: 50.47 ng/ml



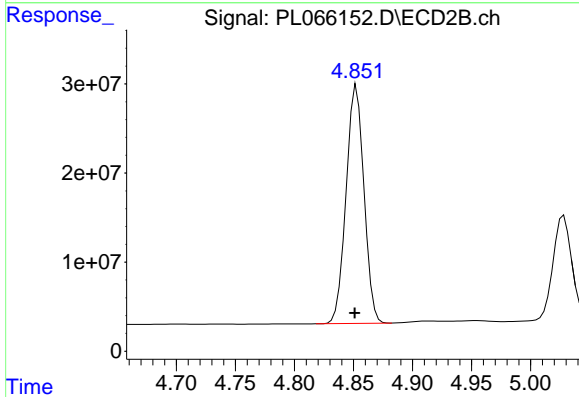
#2 alpha-BHC
 R.T.: 4.559 min
 Delta R.T.: 0.001 min
 Response: 311463773
 Conc: 53.64 ng/ml



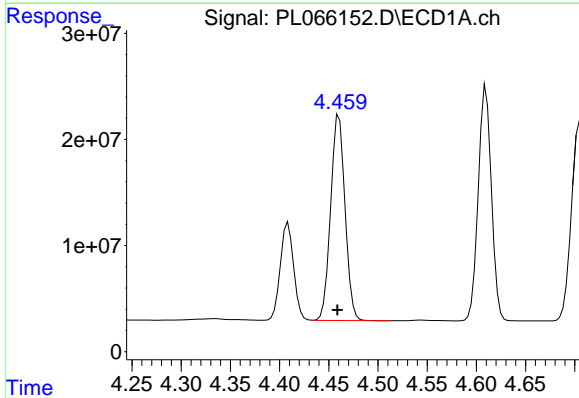
#3 gamma-BHC (Lindane)
 R.T.: 4.161 min
 Delta R.T.: 0.002 min
 Response: 197516199
 Conc: 50.69 ng/ml

Instrument :
 ECD_L
 ClientSampleId :
 PSTDCCC050

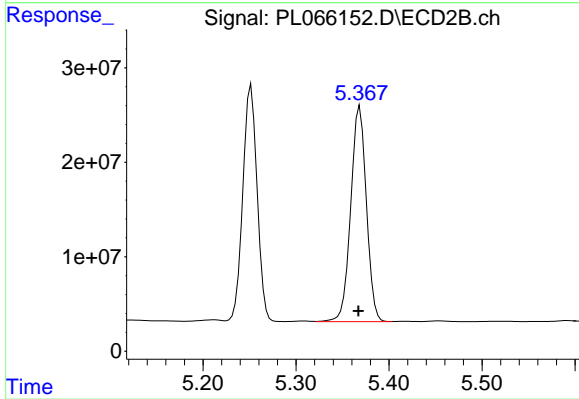
Manual Integrations
 APPROVED
 Ankita
 4/15/2021 12:08:33 PM



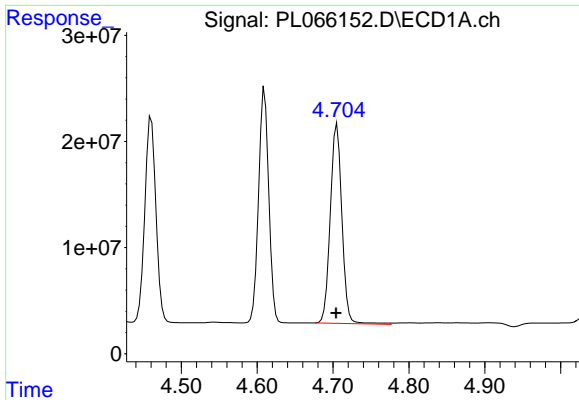
#3 gamma-BHC (Lindane)
 R.T.: 4.853 min
 Delta R.T.: 0.002 min
 Response: 281587506
 Conc: 52.89 ng/ml



#4 Heptachlor
 R.T.: 4.460 min
 Delta R.T.: 0.002 min
 Response: 196879753
 Conc: 47.47 ng/ml



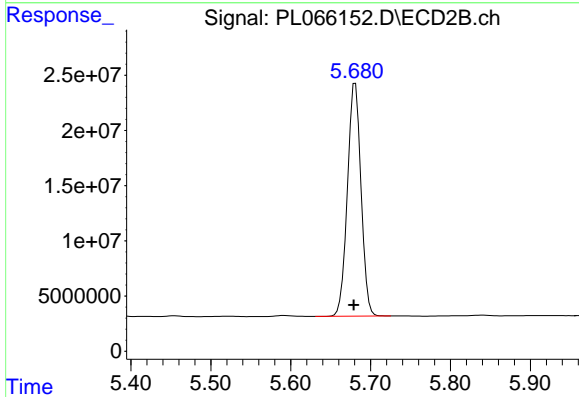
#4 Heptachlor
 R.T.: 5.369 min
 Delta R.T.: 0.002 min
 Response: 266813647
 Conc: 47.94 ng/ml



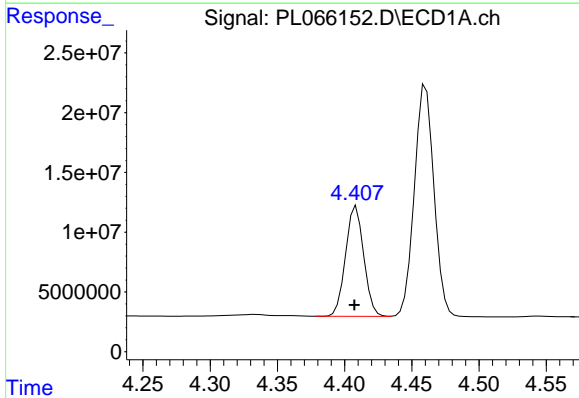
#5 Aldrin
 R.T.: 4.705 min
 Delta R.T.: 0.002 min
 Response: 200011448
 Conc: 51.07 ng/ml

Instrument :
 ECD_L
ClientSampled :
 PSTDCCC050

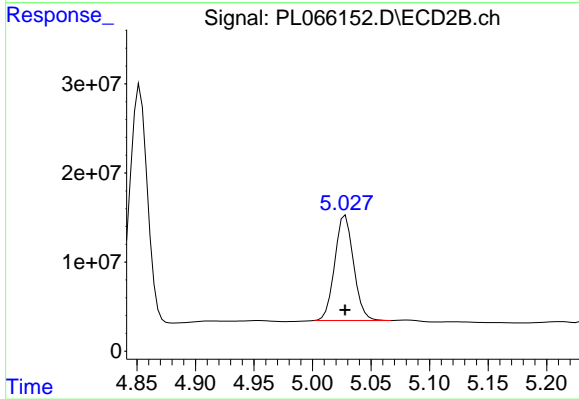
Manual Integrations
APPROVED
 Ankita
 4/15/2021 12:08:33 PM



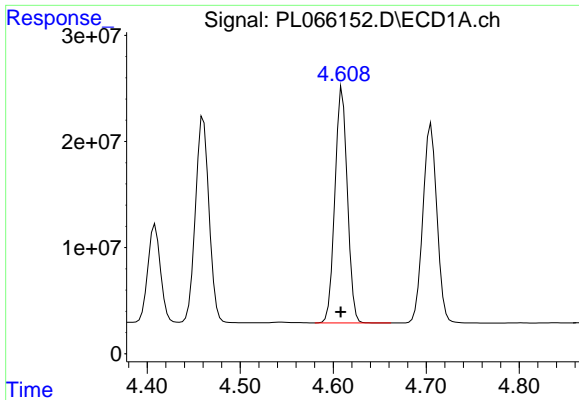
#5 Aldrin
 R.T.: 5.681 min
 Delta R.T.: 0.002 min
 Response: 250084776
 Conc: 50.13 ng/ml



#6 beta-BHC
 R.T.: 4.409 min
 Delta R.T.: 0.001 min
 Response: 86573094
 Conc: 49.12 ng/ml



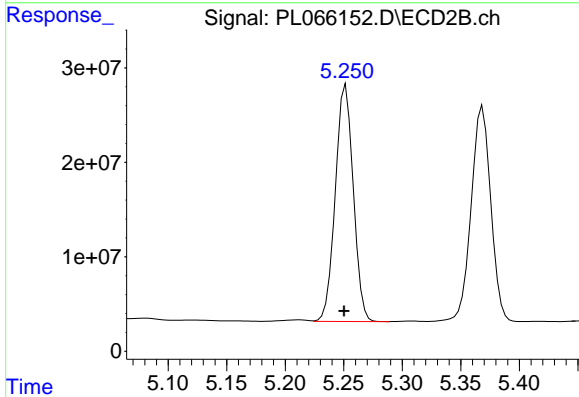
#6 beta-BHC
 R.T.: 5.028 min
 Delta R.T.: 0.000 min
 Response: 132293714
 Conc: 53.13 ng/ml



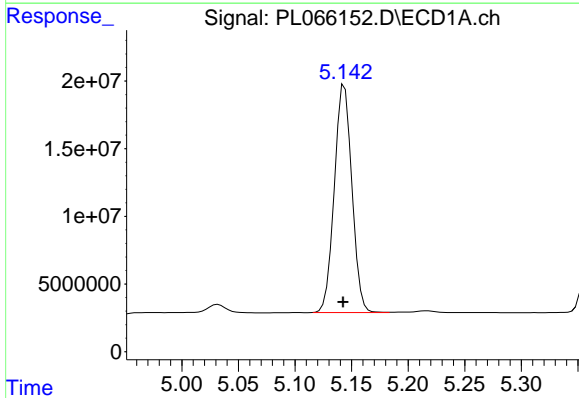
#7 delta-BHC
 R.T.: 4.610 min
 Delta R.T.: 0.001 min
 Response: 206272517
 Conc: 50.00 ng/ml

Instrument :
 ECD_L
 ClientSampleId :
 PSTDCCC050

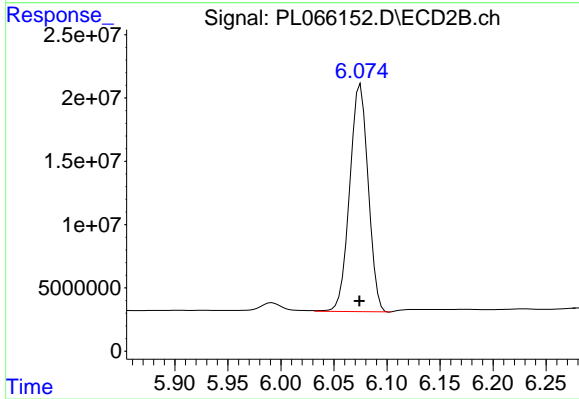
Manual Integrations
 APPROVED
 Ankita
 4/15/2021 12:08:33 PM



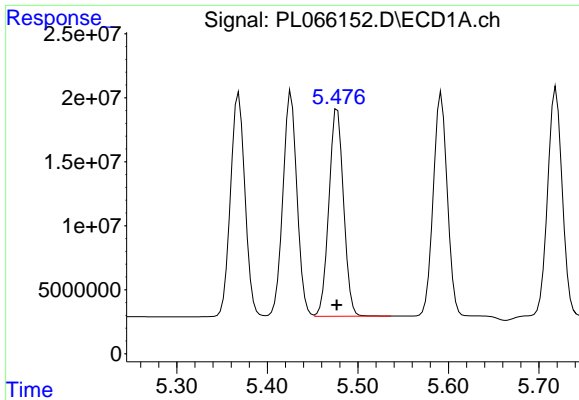
#7 delta-BHC
 R.T.: 5.252 min
 Delta R.T.: 0.002 min
 Response: 267372174
 Conc: 52.00 ng/ml



#8 Heptachlor epoxide
 R.T.: 5.144 min
 Delta R.T.: 0.001 min
 Response: 182166025
 Conc: 49.16 ng/ml



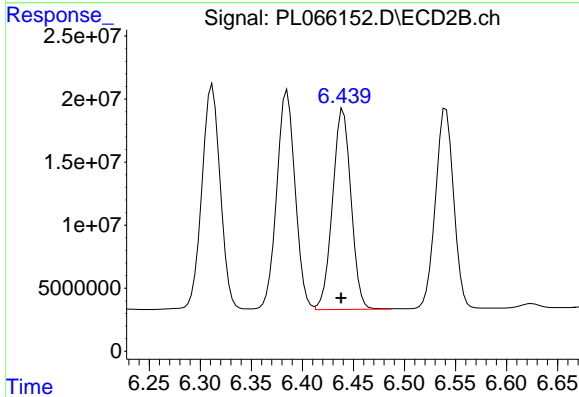
#8 Heptachlor epoxide
 R.T.: 6.075 min
 Delta R.T.: 0.001 min
 Response: 217862710
 Conc: 47.17 ng/ml



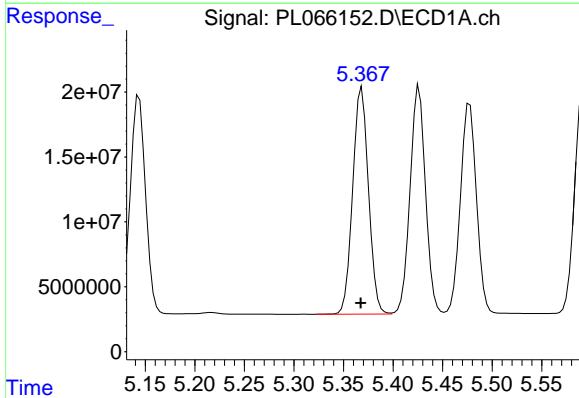
#9 Endosulfan I
 R.T.: 5.477 min
 Delta R.T.: 0.000 min
 Response: 182699285
 Conc: 51.03 ng/ml

Instrument :
 ECD_L
ClientSampled :
 PSTDCCC050

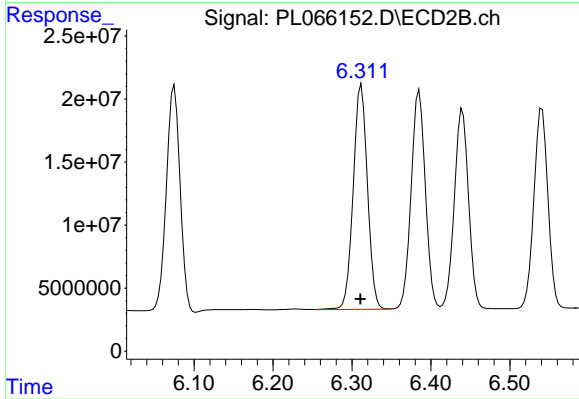
Manual Integrations
APPROVED
 Ankita
 4/15/2021 12:08:33 PM



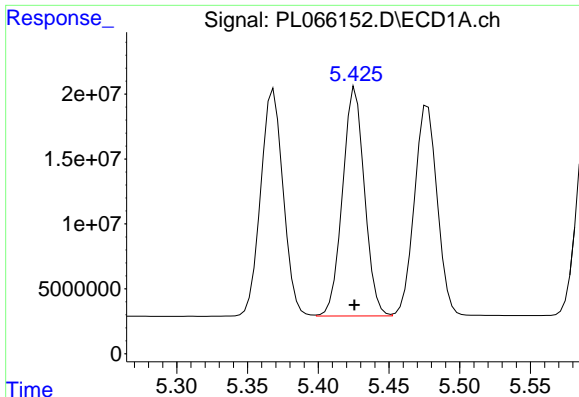
#9 Endosulfan I
 R.T.: 6.440 min
 Delta R.T.: 0.002 min
 Response: 200261840
 Conc: 47.86 ng/ml



#10 gamma-Chlordane
 R.T.: 5.369 min
 Delta R.T.: 0.001 min
 Response: 193705581
 Conc: 52.32 ng/ml



#10 gamma-Chlordane
 R.T.: 6.311 min
 Delta R.T.: 0.000 min
 Response: 223639649
 Conc: 49.00 ng/ml m



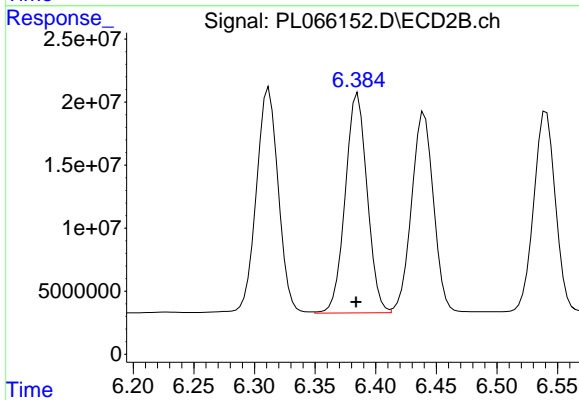
#11 alpha-Chlordane

R.T.: 5.426 min
Delta R.T.: 0.000 min
Response: 190317840
Conc: 51.39 ng/ml

Instrument :
ECD_L
ClientSampled :
PSTDCCC050

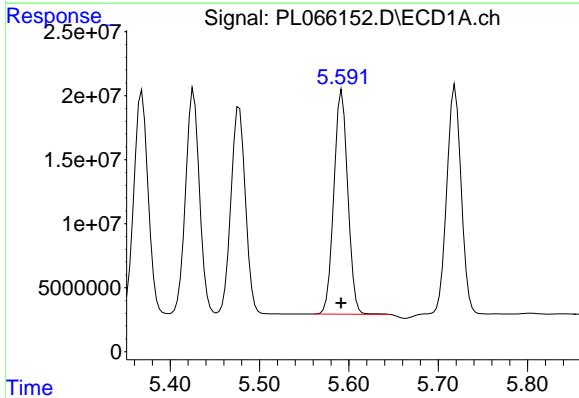
Manual Integrations
APPROVED

Ankita
4/15/2021 12:08:33 PM



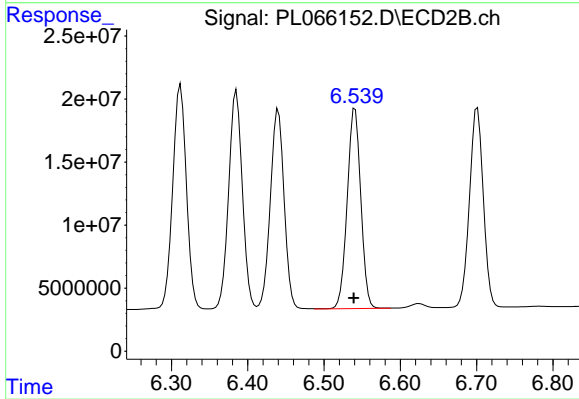
#11 alpha-Chlordane

R.T.: 6.385 min
Delta R.T.: 0.001 min
Response: 218962433
Conc: 48.44 ng/ml



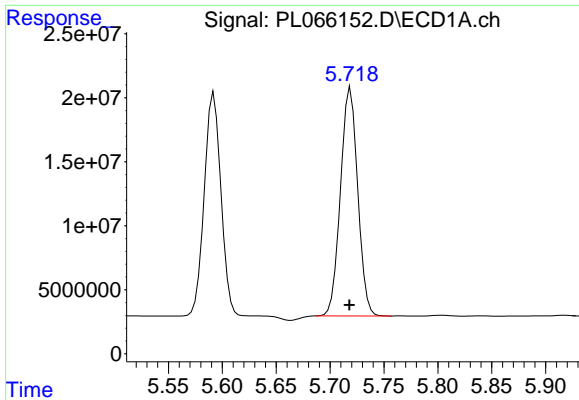
#12 4,4'-DDE

R.T.: 5.592 min
Delta R.T.: 0.000 min
Response: 189220713
Conc: 50.73 ng/ml



#12 4,4'-DDE

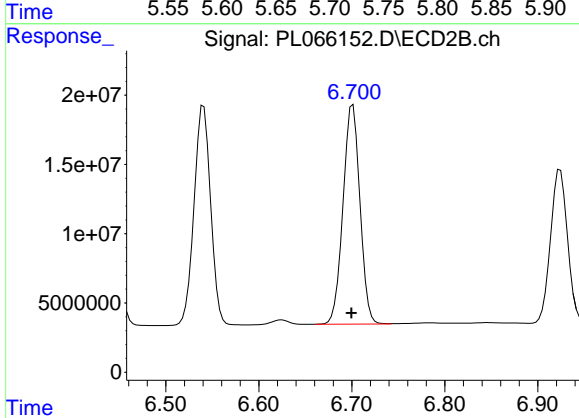
R.T.: 6.541 min
Delta R.T.: 0.002 min
Response: 197138018
Conc: 47.63 ng/ml



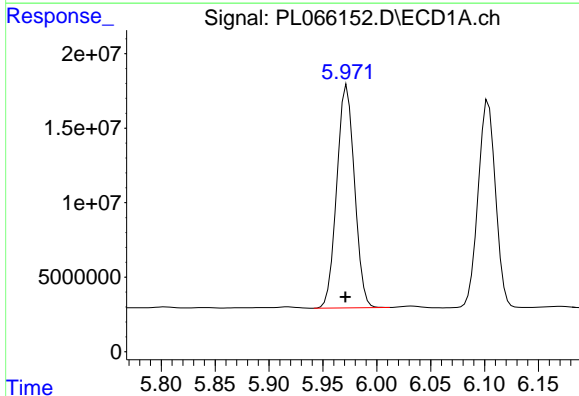
#13 Dieldrin
 R.T.: 5.719 min
 Delta R.T.: 0.001 min
 Response: 198676982
 Conc: 49.04 ng/ml

Instrument :
 ECD_L
 ClientSampled :
 PSTDCCC050

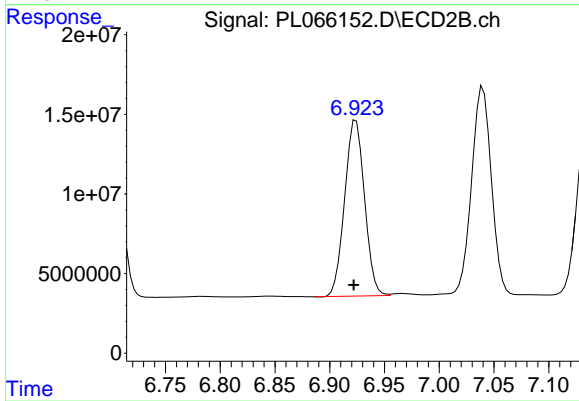
Manual Integrations
 APPROVED
 Ankita
 4/15/2021 12:08:33 PM



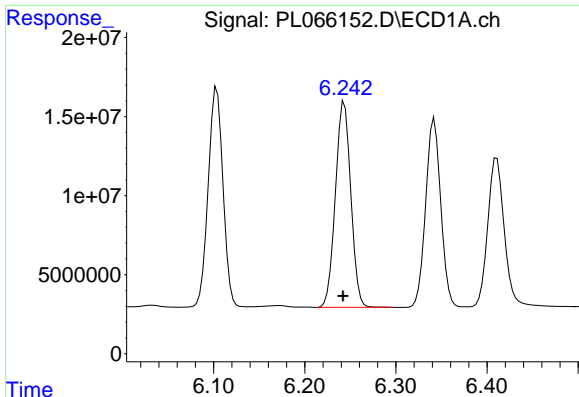
#13 Dieldrin
 R.T.: 6.701 min
 Delta R.T.: 0.002 min
 Response: 200270706
 Conc: 47.93 ng/ml



#14 Endrin
 R.T.: 5.972 min
 Delta R.T.: 0.002 min
 Response: 171078787
 Conc: 49.07 ng/ml



#14 Endrin
 R.T.: 6.924 min
 Delta R.T.: 0.002 min
 Response: 139417991
 Conc: 43.14 ng/ml

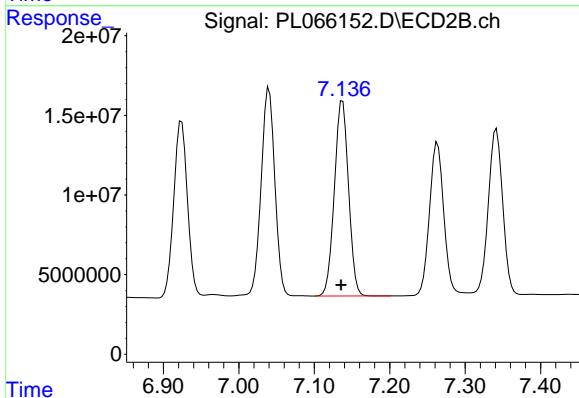


#15 Endosulfan II

R.T.: 6.244 min
 Delta R.T.: 0.002 min
 Response: 152669180
 Conc: 46.50 ng/ml

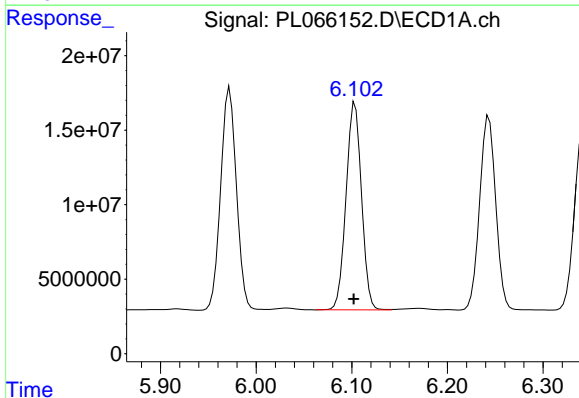
Instrument :
 ECD_L
 ClientSampled :
 PSTDCCC050

Manual Integrations
 APPROVED
 Ankita
 4/15/2021 12:08:33 PM



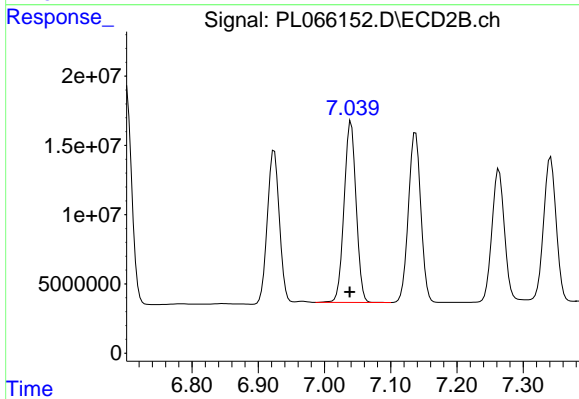
#15 Endosulfan II

R.T.: 7.137 min
 Delta R.T.: 0.002 min
 Response: 160200329
 Conc: 45.96 ng/ml



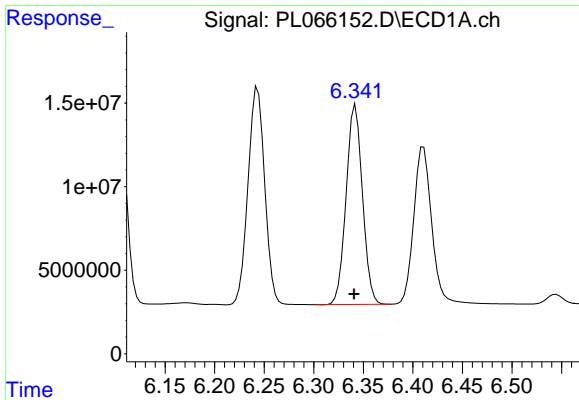
#16 4,4'-DDD

R.T.: 6.104 min
 Delta R.T.: 0.002 min
 Response: 157023846
 Conc: 47.68 ng/ml



#16 4,4'-DDD

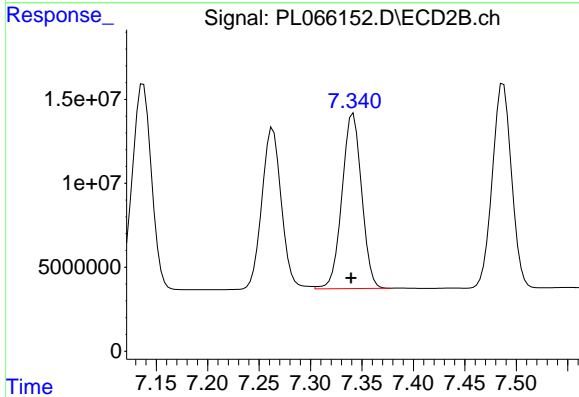
R.T.: 7.040 min
 Delta R.T.: 0.002 min
 Response: 165144095
 Conc: 48.26 ng/ml



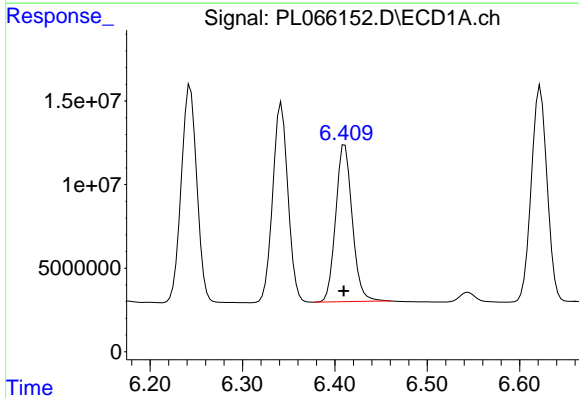
#17 4,4'-DDT
 R.T.: 6.342 min
 Delta R.T.: 0.002 min
 Response: 136922059
 Conc: 42.96 ng/ml

Instrument :
 ECD_L
ClientSampled :
 PSTDCCC050

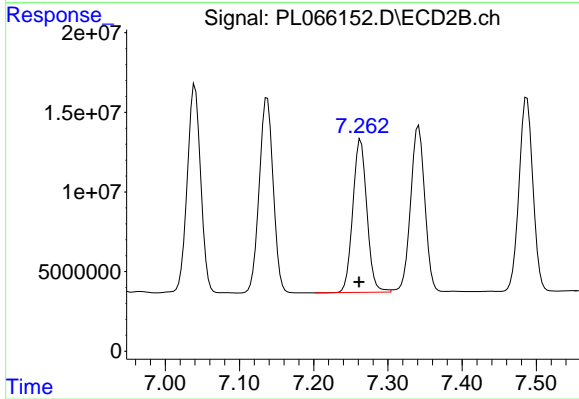
Manual Integrations
APPROVED
 Ankita
 4/15/2021 12:08:33 PM



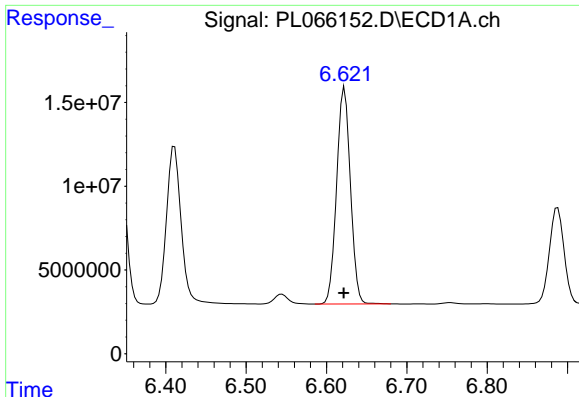
#17 4,4'-DDT
 R.T.: 7.342 min
 Delta R.T.: 0.002 min
 Response: 138423450
 Conc: 40.80 ng/ml



#18 Endrin aldehyde
 R.T.: 6.411 min
 Delta R.T.: 0.001 min
 Response: 116905227
 Conc: 45.35 ng/ml



#18 Endrin aldehyde
 R.T.: 7.263 min
 Delta R.T.: 0.002 min
 Response: 126812018
 Conc: 45.34 ng/ml



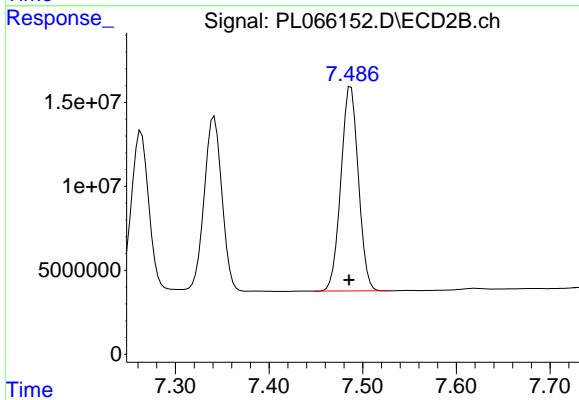
#19 Endosulfan Sulfate

R.T.: 6.622 min
 Delta R.T.: 0.001 min
 Response: 154333502
 Conc: 44.89 ng/ml

Instrument :
 ECD_L
 ClientSampleId :
 PSTDCCC050

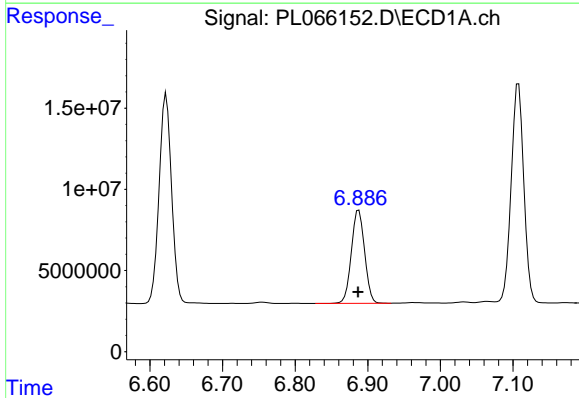
Manual Integrations
 APPROVED

Ankita
 4/15/2021 12:08:33 PM



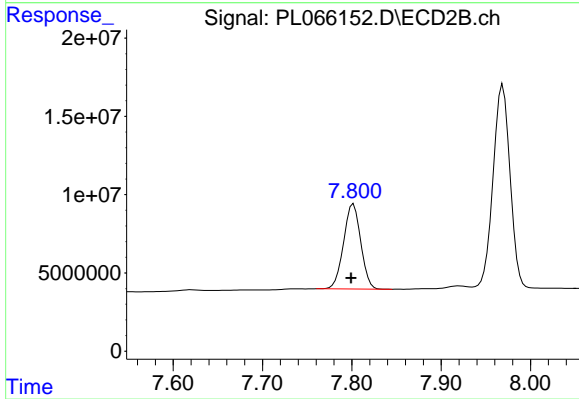
#19 Endosulfan Sulfate

R.T.: 7.487 min
 Delta R.T.: 0.002 min
 Response: 158178350
 Conc: 44.77 ng/ml



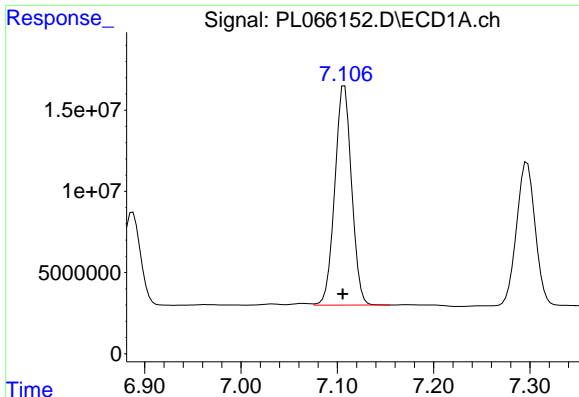
#20 Methoxychlor

R.T.: 6.888 min
 Delta R.T.: 0.001 min
 Response: 72685158
 Conc: 40.15 ng/ml



#20 Methoxychlor

R.T.: 7.802 min
 Delta R.T.: 0.003 min
 Response: 72548715
 Conc: 40.49 ng/ml



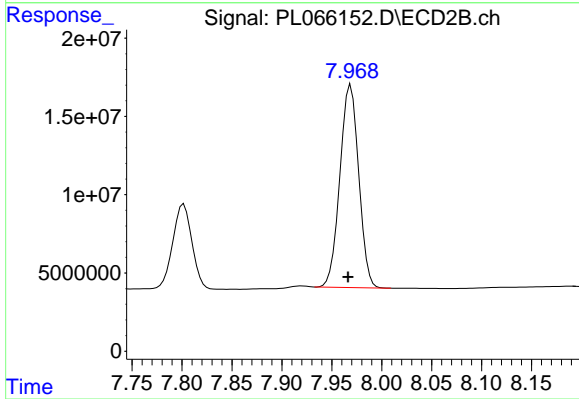
#21 Endrin ketone

R.T.: 7.108 min
 Delta R.T.: 0.002 min
 Response: 163595042
 Conc: 44.49 ng/ml

Instrument :
 ECD_L
 ClientSampled :
 PSTDCCC050

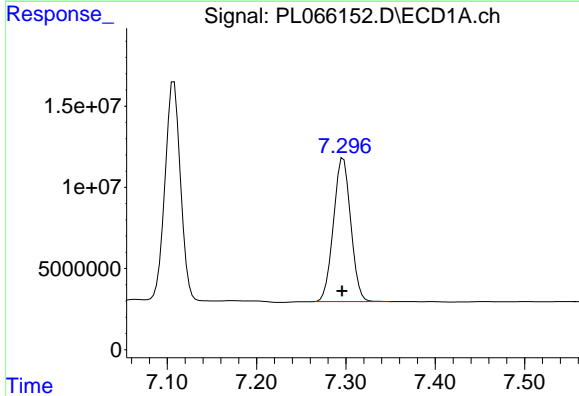
Manual Integrations
 APPROVED

Ankita
 4/15/2021 12:08:33 PM



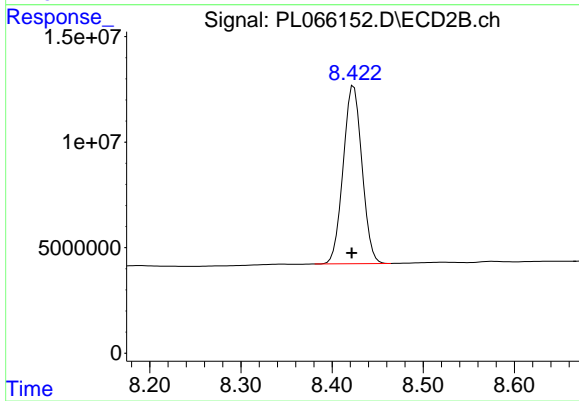
#21 Endrin ketone

R.T.: 7.969 min
 Delta R.T.: 0.003 min
 Response: 169778444
 Conc: 46.15 ng/ml



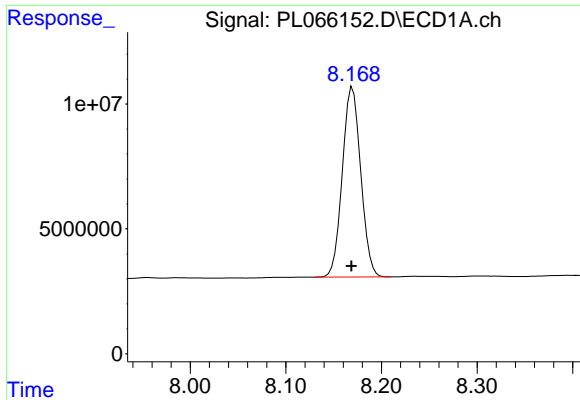
#22 Mirex

R.T.: 7.297 min
 Delta R.T.: 0.001 min
 Response: 118869973
 Conc: 41.56 ng/ml



#22 Mirex

R.T.: 8.424 min
 Delta R.T.: 0.002 min
 Response: 120853591
 Conc: 42.70 ng/ml



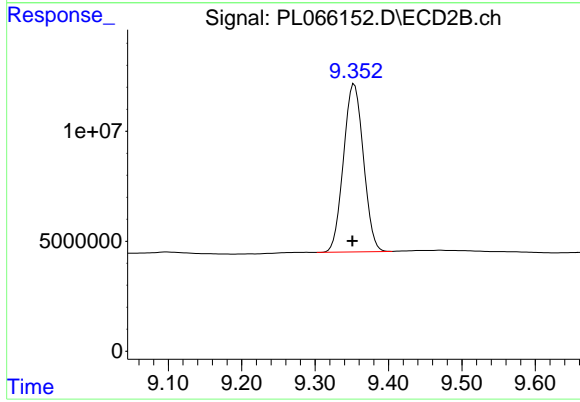
#28 Decachlorobiphenyl

R.T.: 8.170 min
Delta R.T.: 0.001 min
Response: 102099879
Conc: 42.80 ng/ml

Instrument :
ECD_L
ClientSampled :
PSTDCCC050

Manual Integrations
APPROVED

Ankita
4/15/2021 12:08:33 PM



#28 Decachlorobiphenyl

R.T.: 9.353 min
Delta R.T.: 0.003 min
Response: 144043271
Conc: 44.11 ng/ml