

Data Path : Z:\pestpcbsrv\HPCHEM1\ECD\_L\Data\PL041425\  
 Data File : PL095218.D  
 Signal(s) : Signal #1: ECD1A.ch Signal #2: ECD2B.ch  
 Acq On : 14 Apr 2025 18:19  
 Operator : AR\AJ  
 Sample : PTOXICC250  
 Misc :  
 ALS Vial : 18 Sample Multiplier: 1

**Instrument :**  
 ECD\_L  
**ClientSampleId :**  
 PTOXICC250

**Manual Integrations**  
**APPROVED**  
 Reviewed By :Abdul Mirza 04/15/2025  
 Supervised By :mohammad ahmed 04/16/2025

Integration File signal 1: autoint1.e  
 Integration File signal 2: autoint2.e  
 Quant Time: Apr 14 18:37:54 2025  
 Quant Method : Z:\pestpcbsrv\HPCHEM1\ECD\_L\methods\LTX041425.M  
 Quant Title : GC Extractables  
 QLast Update : Mon Apr 14 18:37:01 2025  
 Response via : Initial Calibration  
 Integrator: ChemStation

Volume Inj. : 2 µl  
 Signal #1 Phase : Rtx-CLPesticide 1 Signal #2 Phase: Rtx-CLPesticide 1  
 Signal #1 Info : 30M x 0.32mm x0.3 Signal #2 Info : 30M x 0.32mm x 0.25µm

Compound	RT#1	RT#2	Resp#1	Resp#2	ng/ml	ng/ml
-----						
System Monitoring Compounds						
1) SA Tetrachlo...	3.535	2.767	66276546	88616377	25.140	24.249
7) SA Decachlor...	9.053	7.899	59301889	106.8E6	25.578	24.840
Target Compounds						
2) Toxaphene-1	6.233	4.992	6862157	6575674	251.755	246.028
3) Toxaphene-2	6.437	5.317	4024948	6211715	259.957	248.630
4) Toxaphene-3	7.055	5.675	20061494	6170651	241.299	226.394
5) Toxaphene-4	7.145	6.590	15937208	21778885	249.247	223.238
6) Toxaphene-5	7.932	7.029	10928418	27970803	240.646	272.577m
-----						

(f)=RT Delta > 1/2 Window (#)=Amounts differ by > 25% (m)=manual int.

Data Path : Z:\pestpcbsrv\HPCHEM1\ECD\_L\Data\PL041425\  
 Data File : PL095218.D  
 Signal(s) : Signal #1: ECD1A.ch Signal #2: ECD2B.ch  
 Acq On : 14 Apr 2025 18:19  
 Operator : AR\AJ  
 Sample : PTOXICC250  
 Misc :  
 ALS Vial : 18 Sample Multiplier: 1

Instrument :

ECD\_L

ClientSampleId :

PTOXICC250

Manual Integrations

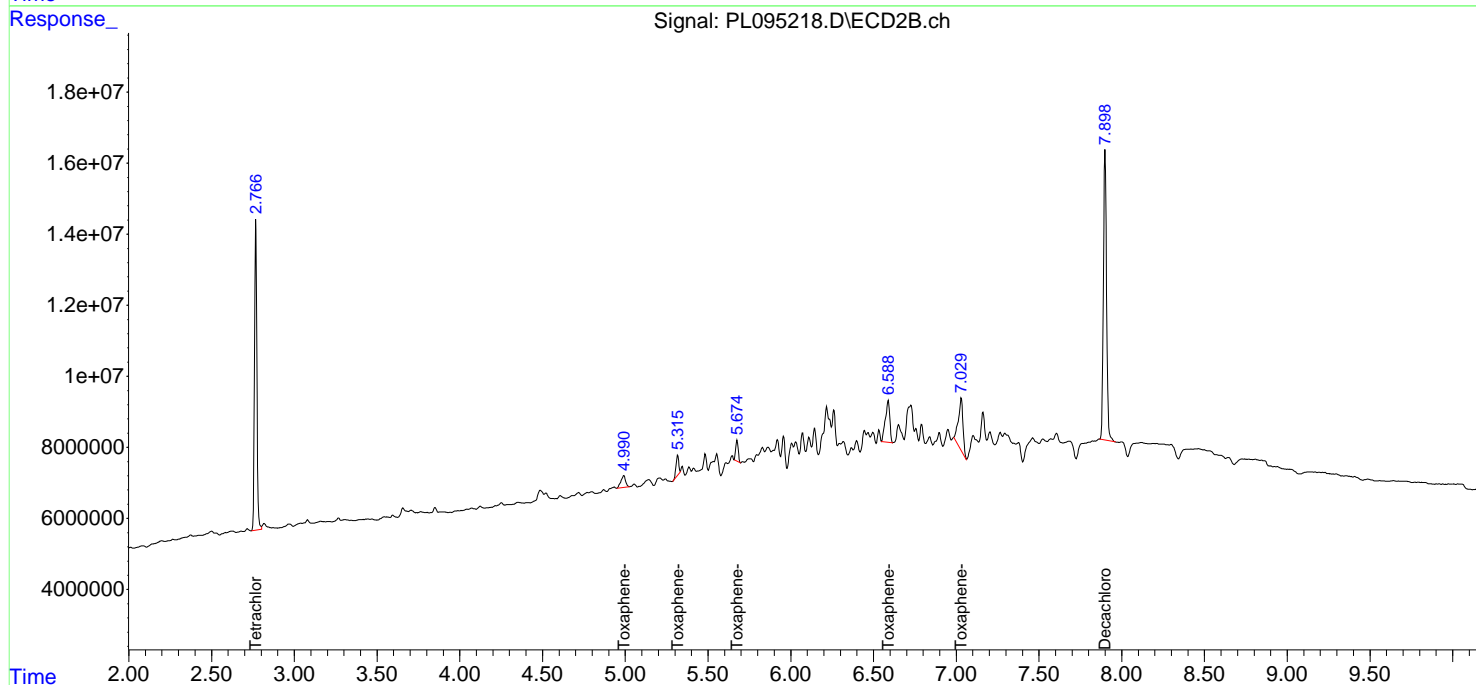
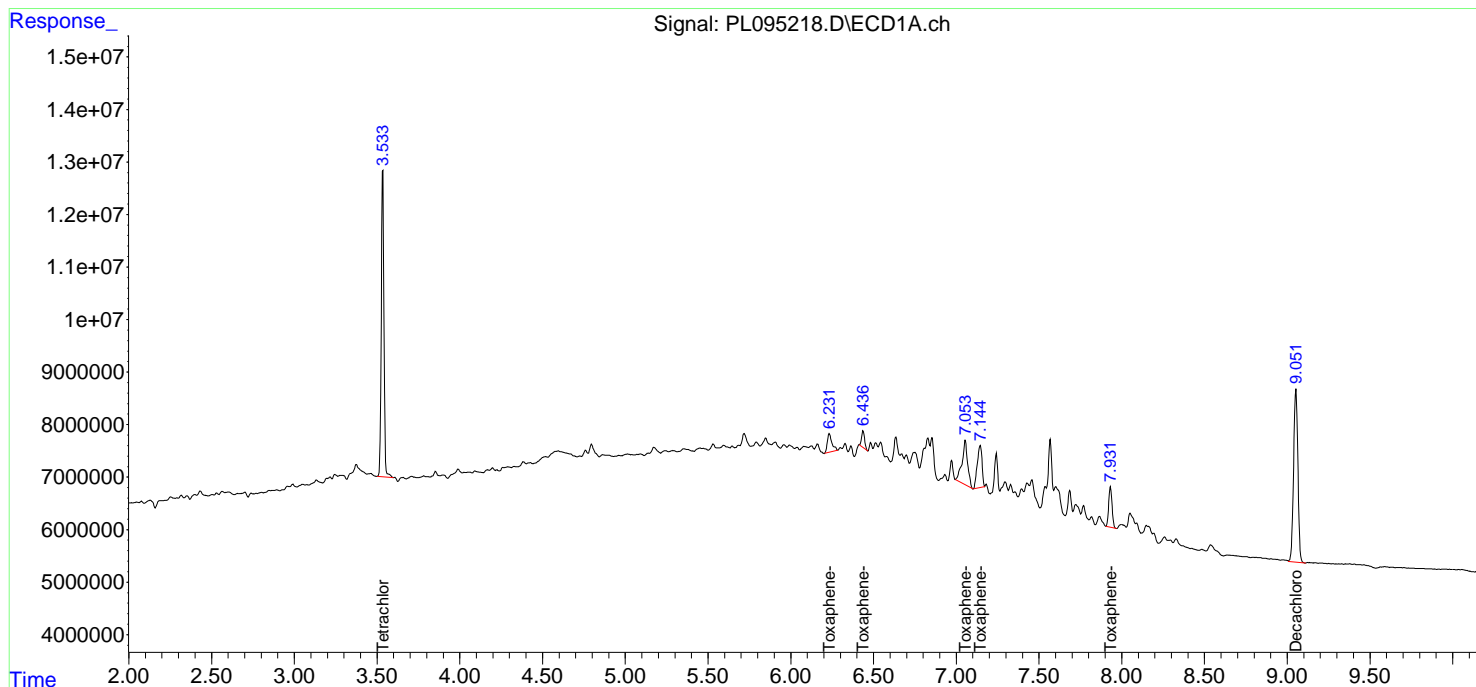
APPROVED

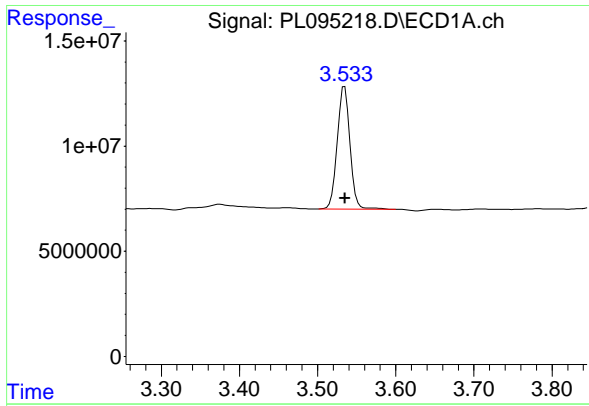
Reviewed By :Abdul Mirza 04/15/2025

Supervised By :mohammad ahmed 04/16/2025

Integration File signal 1: autoint1.e  
 Integration File signal 2: autoint2.e  
 Quant Time: Apr 14 18:37:54 2025  
 Quant Method : Z:\pestpcbsrv\HPCHEM1\ECD\_L\methods\LTX041425.M  
 Quant Title : GC Extractables  
 QLast Update : Mon Apr 14 18:37:01 2025  
 Response via : Initial Calibration  
 Integrator: ChemStation

Volume Inj. : 2 µl  
 Signal #1 Phase : Rtx-CLPesticide 1 Signal #2 Phase: Rtx-CLPesticide 1  
 Signal #1 Info : 30M x 0.32mm x0.3 Signal #2 Info : 30M x 0.32mm x 0.25µm





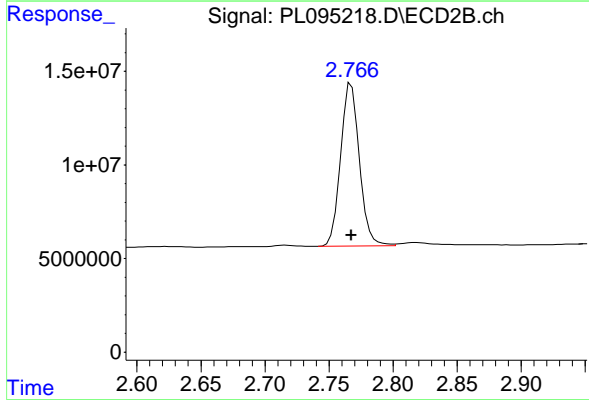
#1 Tetrachloro-m-xylene

R.T.: 3.535 min  
 Delta R.T.: 0.000 min  
 Response: 66276546  
 Conc: 25.14 ng/ml

Instrument : ECD\_L  
 Client Sample Id : PTOXICC250

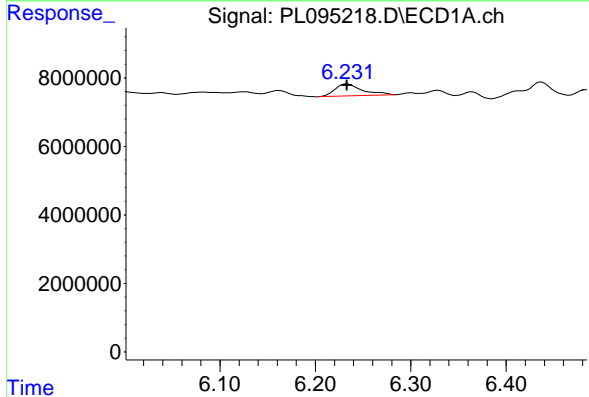
Manual Integrations  
 APPROVED

Reviewed By :Abdul Mirza 04/15/2025  
 Supervised By :mohammad ahmed 04/16/2025



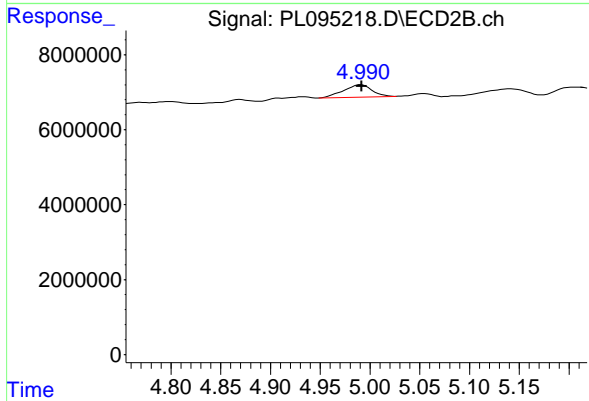
#1 Tetrachloro-m-xylene

R.T.: 2.767 min  
 Delta R.T.: 0.000 min  
 Response: 88616377  
 Conc: 24.25 ng/ml



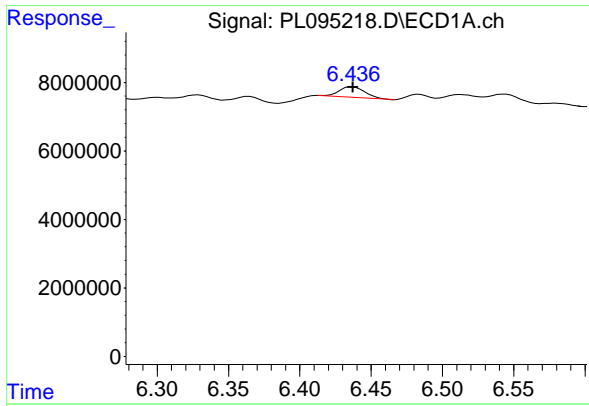
#2 Toxaphene-1

R.T.: 6.233 min  
 Delta R.T.: 0.000 min  
 Response: 6862157  
 Conc: 251.75 ng/ml



#2 Toxaphene-1

R.T.: 4.992 min  
 Delta R.T.: 0.000 min  
 Response: 6575674  
 Conc: 246.03 ng/ml



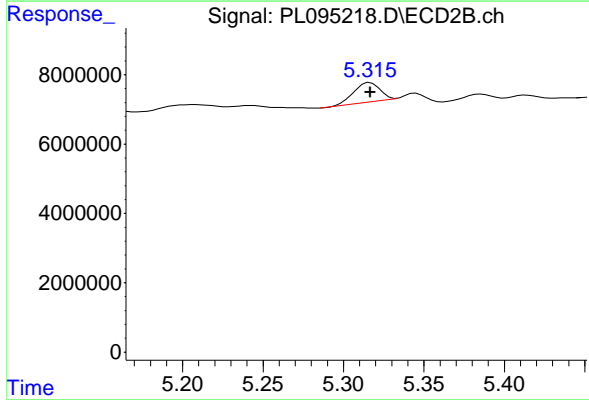
#3 Toxaphene-2

R.T.: 6.437 min  
 Delta R.T.: 0.000 min  
 Response: 4024948  
 Conc: 259.96 ng/ml

Instrument : ECD\_L  
 Client Sample Id : PTOXICC250

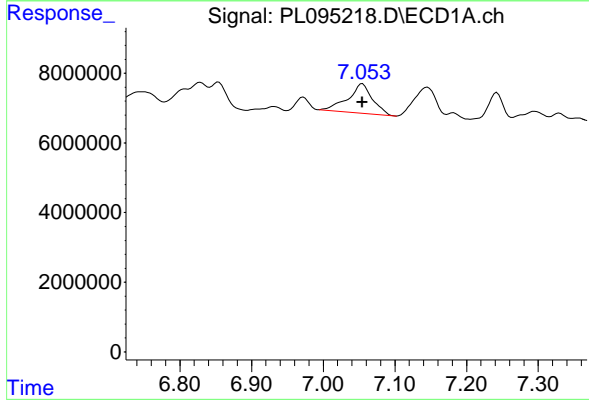
Manual Integrations  
 APPROVED

Reviewed By :Abdul Mirza 04/15/2025  
 Supervised By :mohammad ahmed 04/16/2025



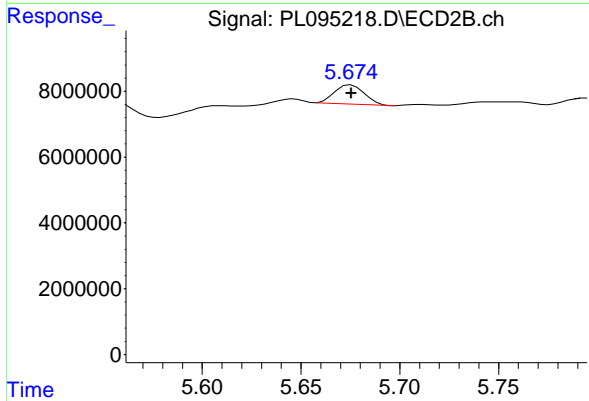
#3 Toxaphene-2

R.T.: 5.317 min  
 Delta R.T.: 0.000 min  
 Response: 6211715  
 Conc: 248.63 ng/ml



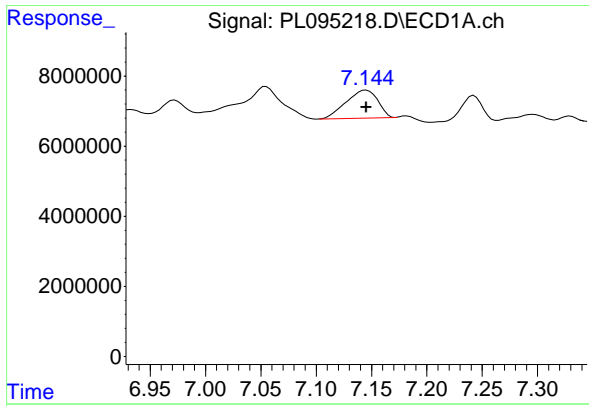
#4 Toxaphene-3

R.T.: 7.055 min  
 Delta R.T.: 0.000 min  
 Response: 20061494  
 Conc: 241.30 ng/ml



#4 Toxaphene-3

R.T.: 5.675 min  
 Delta R.T.: 0.000 min  
 Response: 6170651  
 Conc: 226.39 ng/ml



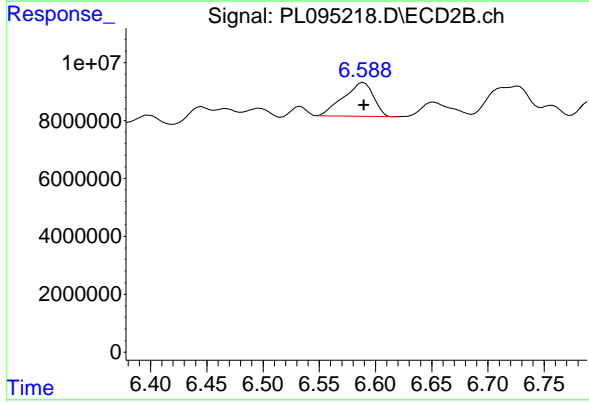
#5 Toxaphene-4

R.T.: 7.145 min  
 Delta R.T.: 0.000 min  
 Response: 15937208  
 Conc: 249.25 ng/ml

Instrument : ECD\_L  
 Client Sample Id : PTOXICC250

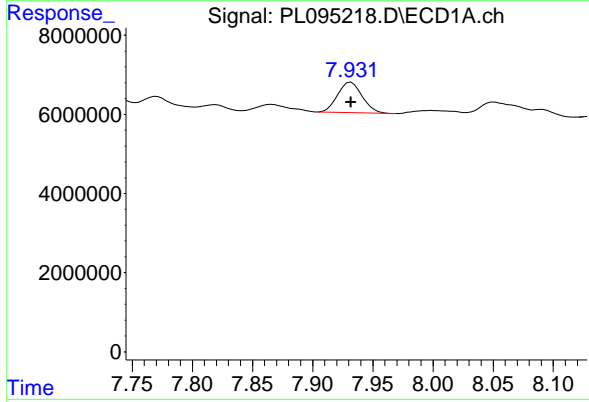
Manual Integrations  
 APPROVED

Reviewed By :Abdul Mirza 04/15/2025  
 Supervised By :mohammad ahmed 04/16/2025



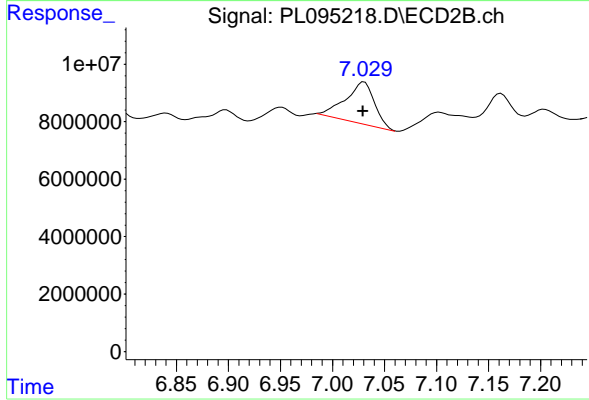
#5 Toxaphene-4

R.T.: 6.590 min  
 Delta R.T.: 0.000 min  
 Response: 21778885  
 Conc: 223.24 ng/ml



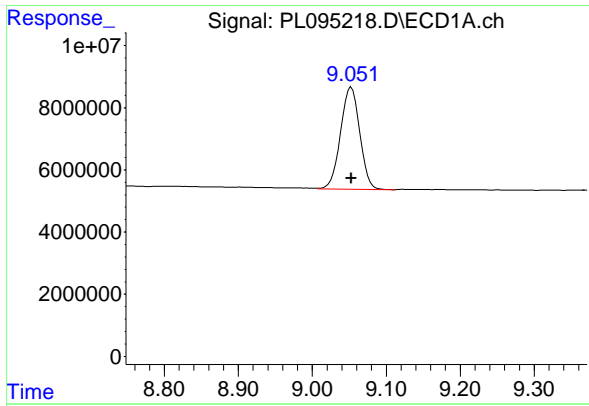
#6 Toxaphene-5

R.T.: 7.932 min  
 Delta R.T.: 0.000 min  
 Response: 10928418  
 Conc: 240.65 ng/ml



#6 Toxaphene-5

R.T.: 7.029 min  
 Delta R.T.: 0.000 min  
 Response: 27970803  
 Conc: 272.58 ng/ml m



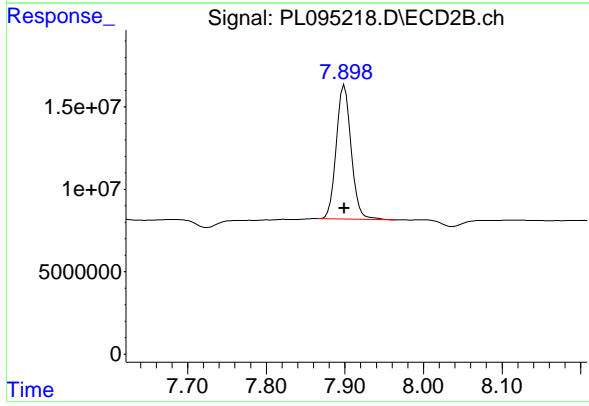
#7 Decachlorobiphenyl

R.T.: 9.053 min  
 Delta R.T.: 0.000 min  
 Response: 59301889  
 Conc: 25.58 ng/ml

Instrument :  
 ECD\_L  
 ClientSampleId :  
 PTOXICC250

Manual Integrations  
 APPROVED

Reviewed By :Abdul Mirza 04/15/2025  
 Supervised By :mohammad ahmed 04/16/2025



#7 Decachlorobiphenyl

R.T.: 7.899 min  
 Delta R.T.: 0.000 min  
 Response: 106783142  
 Conc: 24.84 ng/ml