

Data Path : Z:\pestpcbsrv\HPCHEM1\ECD\_L\Data\PL041520\  
 Data File : PL058036.D  
 Signal(s) : Signal #1: ECD1A.ch Signal #2: ECD2B.ch  
 Acq On : 15 Apr 2020 22:14  
 Operator : AJ\MA  
 Sample : L2245-14  
 Misc :  
 ALS Vial : 29 Sample Multiplier: 1

Instrument :  
 ECD\_L  
 ClientSampleId :

Integration File signal 1: autoint1.e  
 Integration File signal 2: autoint2.e  
 Quant Time: Apr 16 00:57:38 2020  
 Quant Method : Z:\pestpcbsrv\HPCHEM1\ECD\_L\methods\PL040320.M  
 Quant Title : GC Extractables  
 QLast Update : Sat Apr 04 06:41:11 2020  
 Response via : Initial Calibration  
 Integrator: ChemStation

Volume Inj. : 1 µl  
 Signal #1 Phase : ZB-MR2 Signal #2 Phase: ZB-MR1  
 Signal #1 Info : 30M x 0.32mm x0.2 Signal #2 Info : 30M x 0.32mm x0.5µm

Compound	RT#1	RT#2	Resp#1	Resp#2	ng/ml	ng/ml
System Monitoring Compounds						
1) SA Tetrachlo...	3.450	3.956	1704928	18722941	0.169	8.628 #
28) SA Decachlor...	8.227f	8.977	209.8E6	48538233	20.355	21.729
Target Compounds						
2) A alpha-BHC	3.898	0.000	1292764	0	0.074	N.D. #
3) MA gamma-BHC...	4.176	4.626	1558335	588923	0.107	0.181 #
4) MA Heptachlor	4.472	5.149f	1704144	266810	0.106	0.079 #
5) MB Aldrin	4.718	5.428	9776965	755317	0.664	0.233 #
6) B beta-BHC	4.403f	0.000	37917106	0	6.004	N.D. #
7) B delta-BHC	4.611f	5.038f	4880013	9275366	0.322	5.585 #
8) B Heptachlo...	5.189f	5.806	16565839	10628274	1.233	3.936 #
10) B gamma-Chl...	5.390	6.062	26372664	-2879401	1.942	N.D. #
11) B alpha-Chl...	5.439f	6.120	51403232	8561760	3.860	2.616 #
12) B 4,4'-DDE	5.599f	6.276	6848237	14563998	0.523	4.919 #
13) MA Dieldrin	5.766f	6.417	61240524	4092345	4.708	1.339 #
14) MA Endrin	5.992f	6.635	20047439	4400716	1.717	1.761
15) B Endosulfa...	6.290	6.836f	14470231	2000101	1.308	0.771 #
16) A 4,4'-DDD	6.154f	6.770	2364046	14150807	0.237	6.201 #
17) MA 4,4'-DDT	6.392f	7.062	69807240	1798074	6.878	0.807 #
18) B Endrin al...	6.436	6.987	91595544	941624	9.797	0.424 #
19) B Endosulfa...	6.678f	0.000	71344301	0	7.022	N.D. #
20) A Methoxychlor	6.926	7.503f	118.3E6	308405	21.456	0.242 #
22) Mirex	7.363f	8.144f	313976	23650412	0.038	12.863 #
23) Chlordane-1	4.348f	4.939	34690960	8354786	93.797	94.743
24) Chlordane-2	4.832	5.405	4437107	620108	10.991	5.942 #
25) Chlordane-3	5.390	6.062	26372664	-2879401	21.571	N.D. #
26) Chlordane-4	5.439f	6.120	51403232	8561760	49.416	16.310 #
27) Chlordane-5	6.290	6.942f	14470231	-1032041	38.253	N.D. #

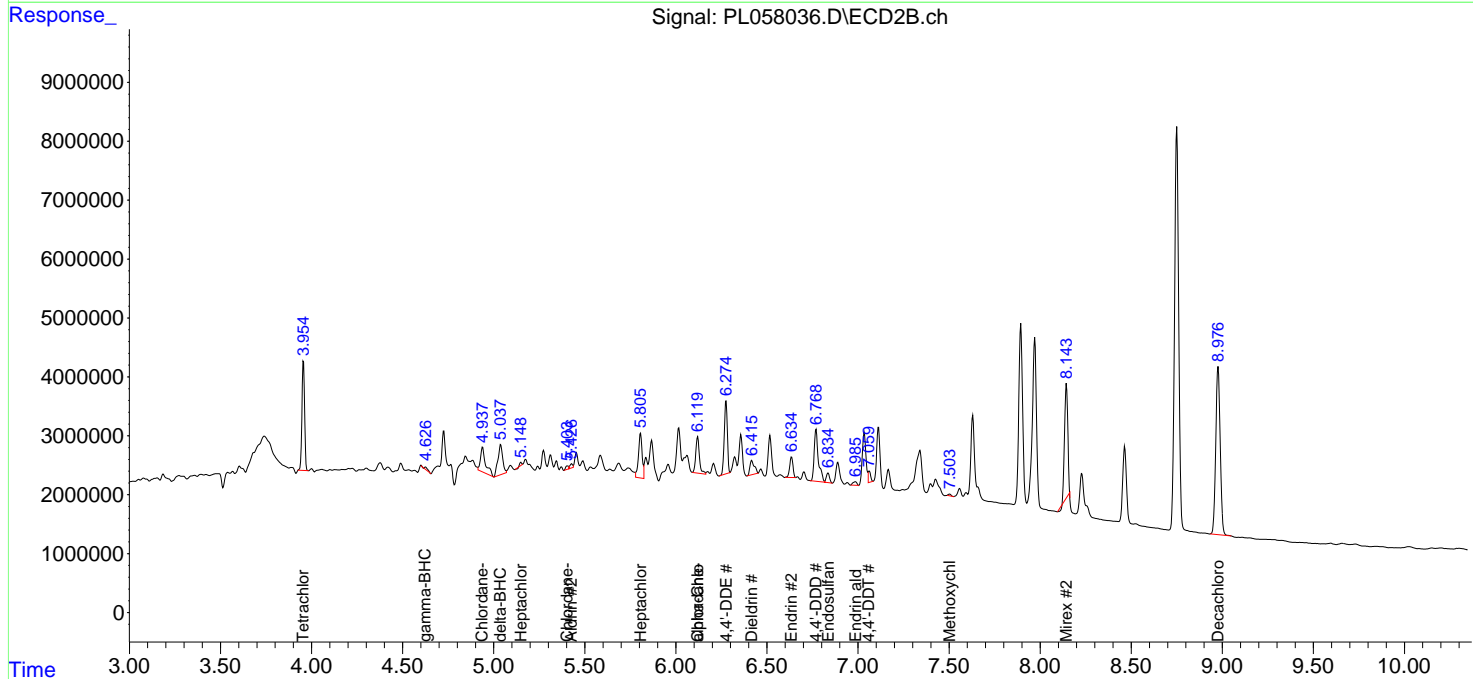
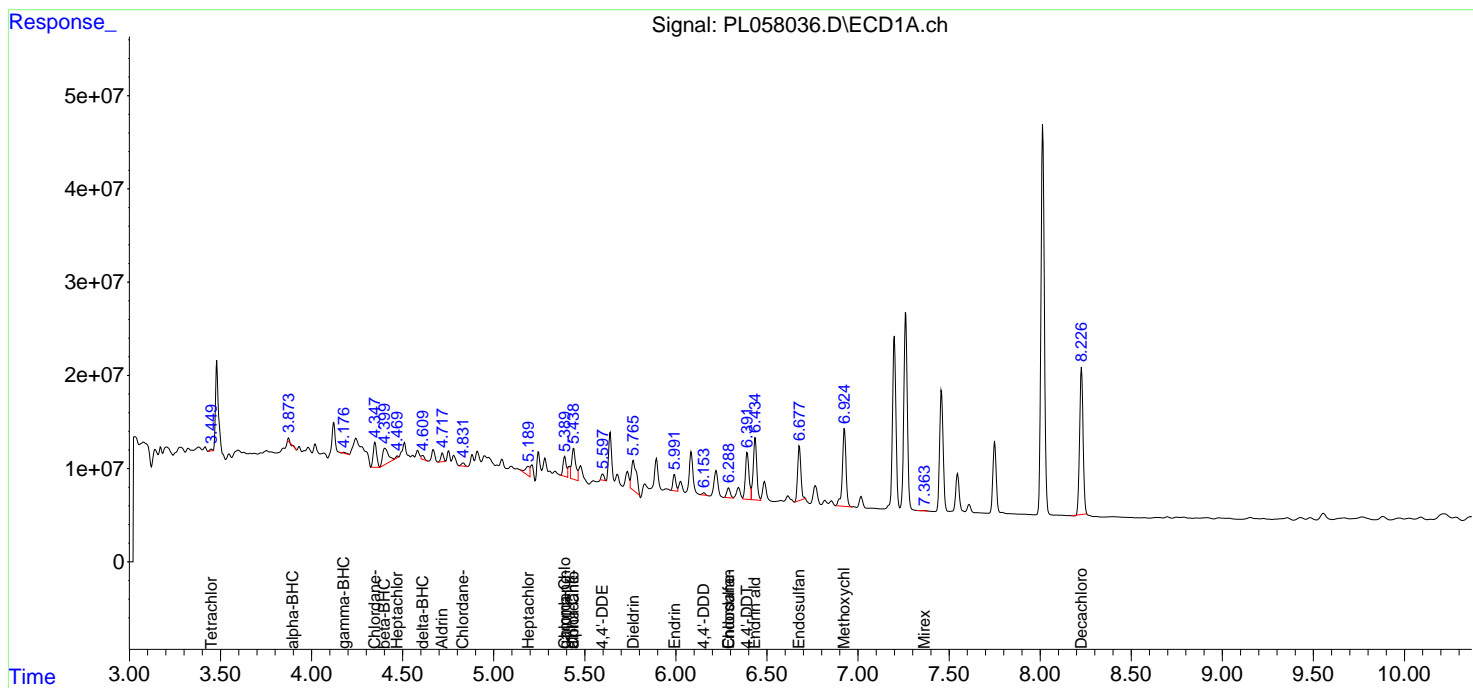
(f)=RT Delta > 1/2 Window (#)=Amounts differ by > 25% (m)=manual int.

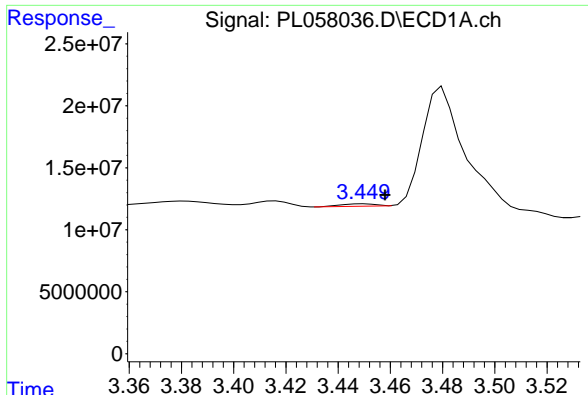
Data Path : Z:\pestpcbsrv\HPCHEM1\ECD\_L\Data\PL041520\  
 Data File : PL058036.D  
 Signal(s) : Signal #1: ECD1A.ch Signal #2: ECD2B.ch  
 Acq On : 15 Apr 2020 22:14  
 Operator : AJ\MA  
 Sample : L2245-14  
 Misc :  
 ALS Vial : 29 Sample Multiplier: 1

Instrument :  
 ECD\_L  
 ClientSampled :

Integration File signal 1: autoint1.e  
 Integration File signal 2: autoint2.e  
 Quant Time: Apr 16 00:57:38 2020  
 Quant Method : Z:\pestpcbsrv\HPCHEM1\ECD\_L\methods\PL040320.M  
 Quant Title : GC Extractables  
 QLast Update : Sat Apr 04 06:41:11 2020  
 Response via : Initial Calibration  
 Integrator: ChemStation

Volume Inj. : 1 µl  
 Signal #1 Phase : ZB-MR2 Signal #2 Phase: ZB-MR1  
 Signal #1 Info : 30M x 0.32mm x0.2 Signal #2 Info : 30M x 0.32mm x0.5µm

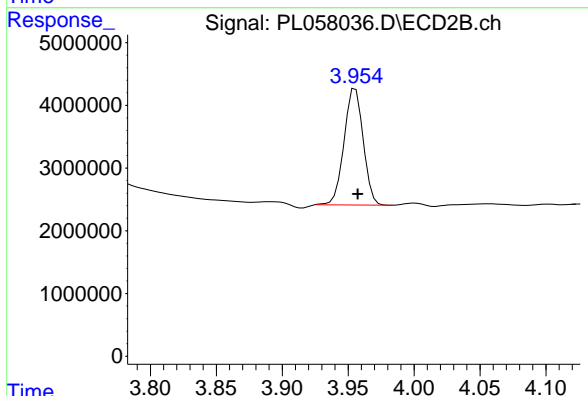




#1 Tetrachloro-m-xylene

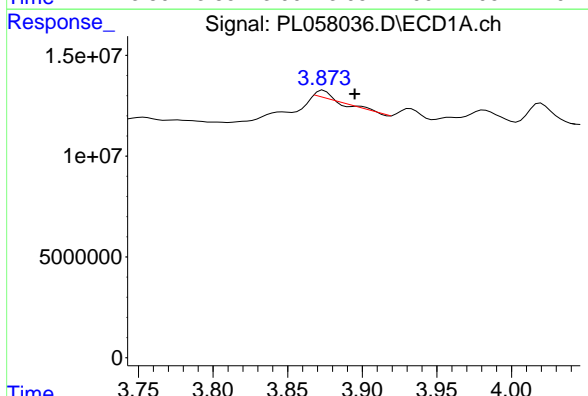
R.T.: 3.450 min  
 Delta R.T.: -0.008 min  
 Response: 1704928  
 Conc: 0.17 ng/ml

Instrument :  
 ECD\_L  
 ClientSampleId :



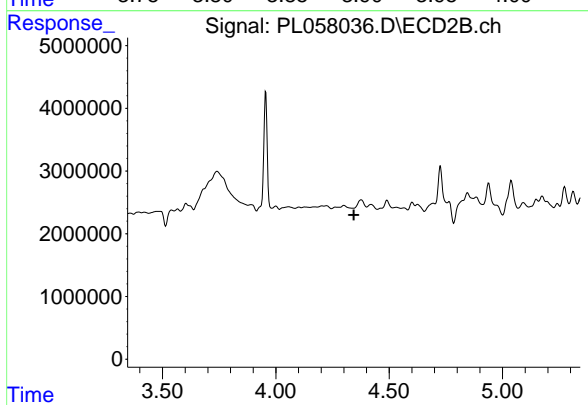
#1 Tetrachloro-m-xylene

R.T.: 3.956 min  
 Delta R.T.: -0.002 min  
 Response: 18722941  
 Conc: 8.63 ng/ml



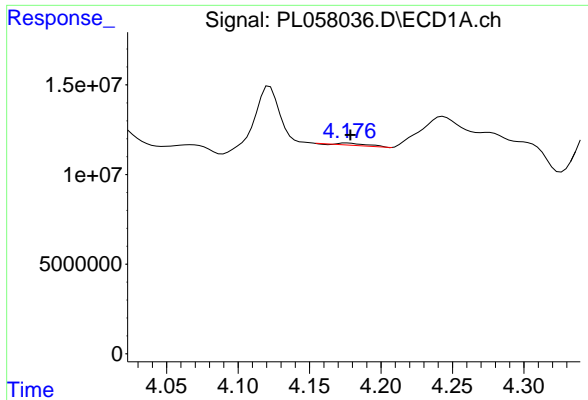
#2 alpha-BHC

R.T.: 3.898 min  
 Delta R.T.: 0.003 min  
 Response: 1292764  
 Conc: 0.07 ng/ml



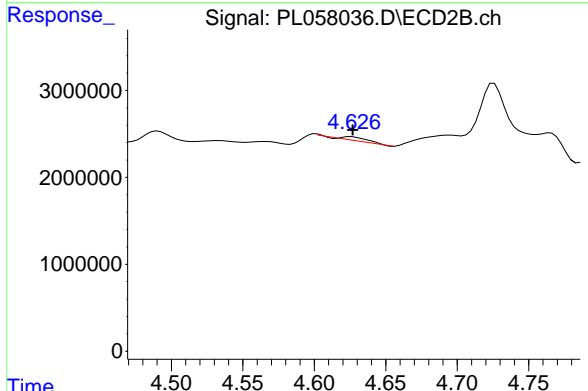
#2 alpha-BHC

R.T.: 0.000 min  
 Exp R.T.: 4.345 min  
 Response: 0  
 Conc: N.D.

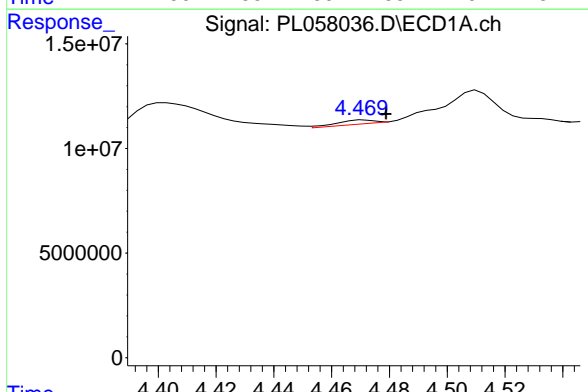


#3 gamma-BHC (Lindane)  
 R.T.: 4.176 min  
 Delta R.T.: -0.002 min  
 Response: 1558335  
 Conc: 0.11 ng/ml

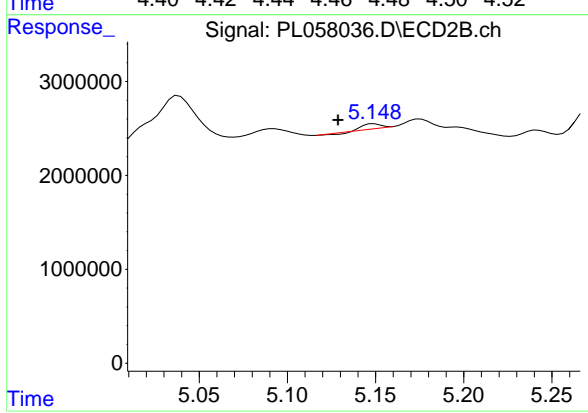
Instrument :  
 ECD\_L  
 ClientSampled :



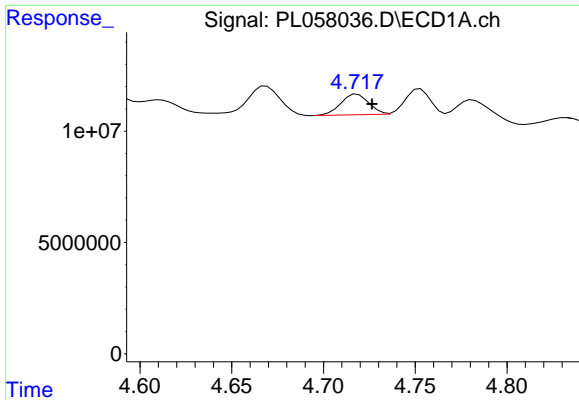
#3 gamma-BHC (Lindane)  
 R.T.: 4.626 min  
 Delta R.T.: -0.001 min  
 Response: 588923  
 Conc: 0.18 ng/ml



#4 Heptachlor  
 R.T.: 4.472 min  
 Delta R.T.: -0.007 min  
 Response: 1704144  
 Conc: 0.11 ng/ml

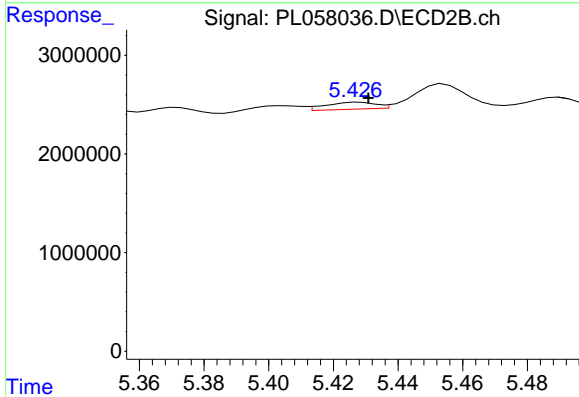


#4 Heptachlor  
 R.T.: 5.149 min  
 Delta R.T.: 0.021 min  
 Response: 266810  
 Conc: 0.08 ng/ml

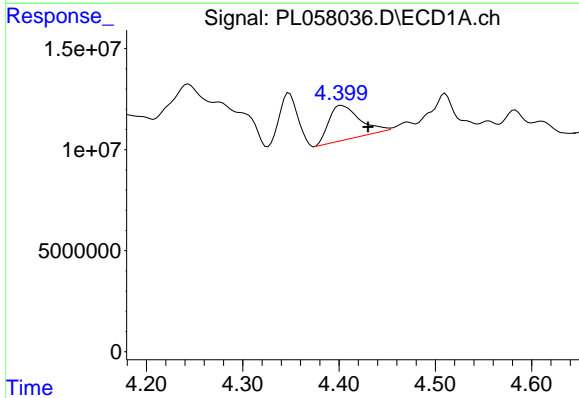


#5 Aldrin  
 R.T.: 4.718 min  
 Delta R.T.: -0.008 min  
 Response: 9776965  
 Conc: 0.66 ng/ml

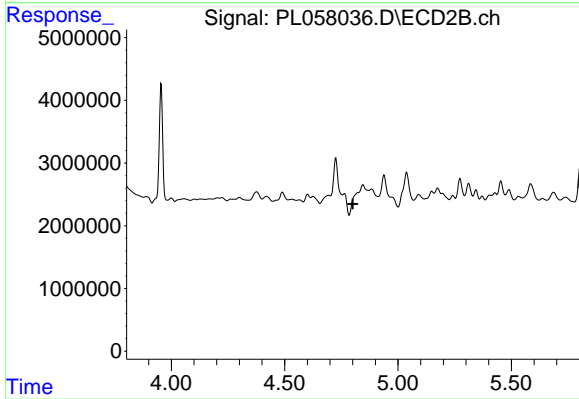
Instrument :  
 ECD\_L  
 ClientSampleId :



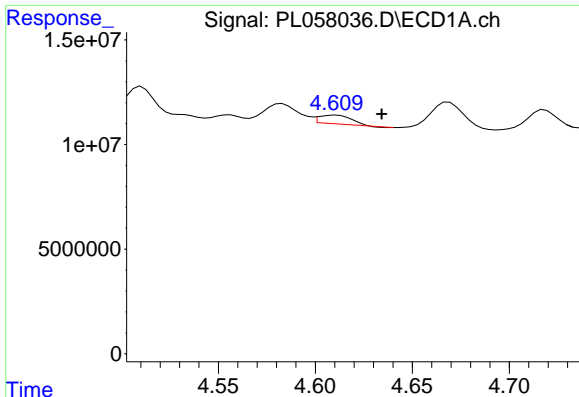
#5 Aldrin  
 R.T.: 5.428 min  
 Delta R.T.: -0.003 min  
 Response: 755317  
 Conc: 0.23 ng/ml



#6 beta-BHC  
 R.T.: 4.403 min  
 Delta R.T.: -0.028 min  
 Response: 37917106  
 Conc: 6.00 ng/ml



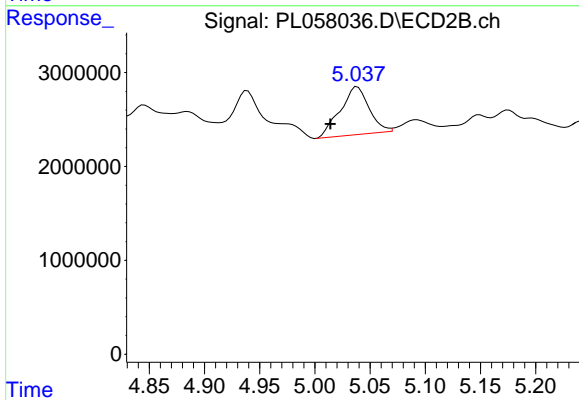
#6 beta-BHC  
 R.T.: 0.000 min  
 Exp R.T. : 4.800 min  
 Response: 0  
 Conc: N.D.



#7 delta-BHC

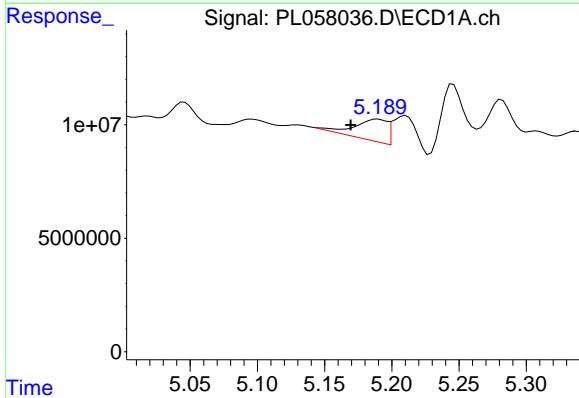
R.T.: 4.611 min  
 Delta R.T.: -0.024 min  
 Response: 4880013  
 Conc: 0.32 ng/ml

Instrument :  
 ECD\_L  
 ClientSampleId :



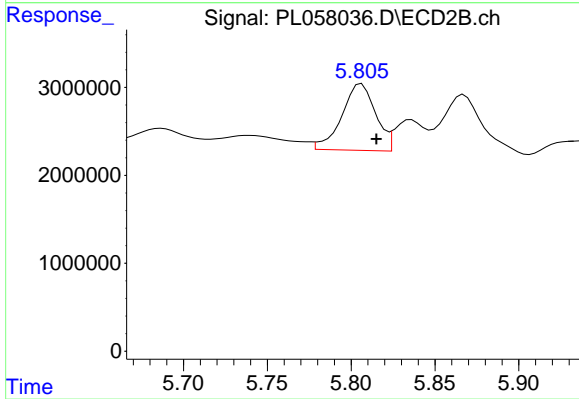
#7 delta-BHC

R.T.: 5.038 min  
 Delta R.T.: 0.024 min  
 Response: 9275366  
 Conc: 5.59 ng/ml



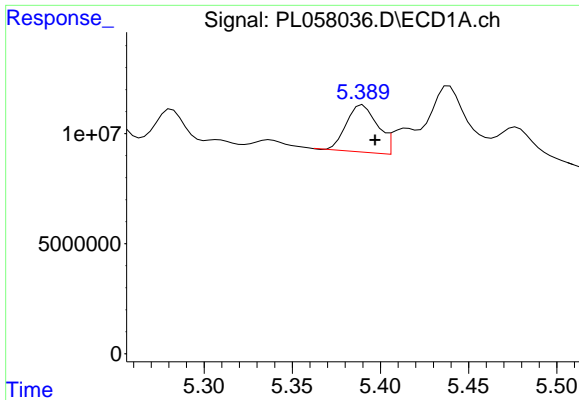
#8 Heptachlor epoxide

R.T.: 5.189 min  
 Delta R.T.: 0.020 min  
 Response: 16565839  
 Conc: 1.23 ng/ml



#8 Heptachlor epoxide

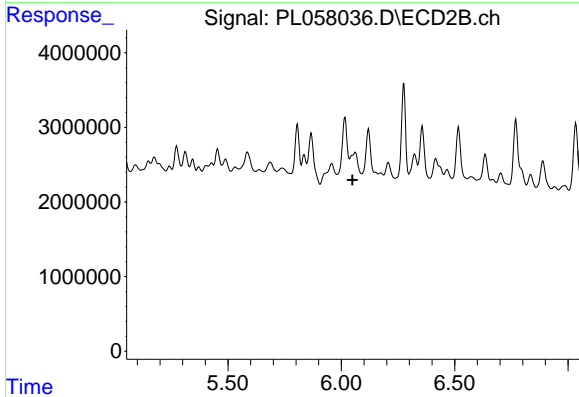
R.T.: 5.806 min  
 Delta R.T.: -0.009 min  
 Response: 10628274  
 Conc: 3.94 ng/ml



#10 gamma-Chlordane

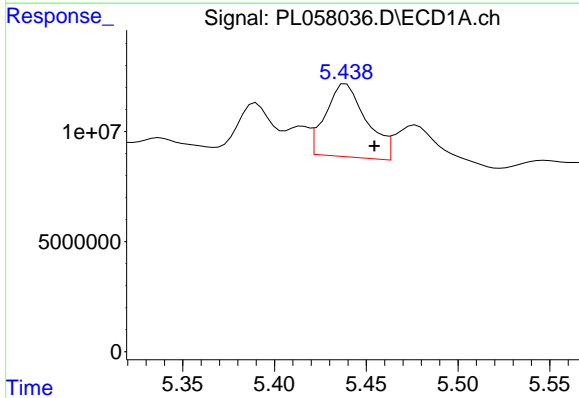
R.T.: 5.390 min  
 Delta R.T.: -0.007 min  
 Response: 26372664  
 Conc: 1.94 ng/ml

Instrument :  
 ECD\_L  
 ClientSampleId :



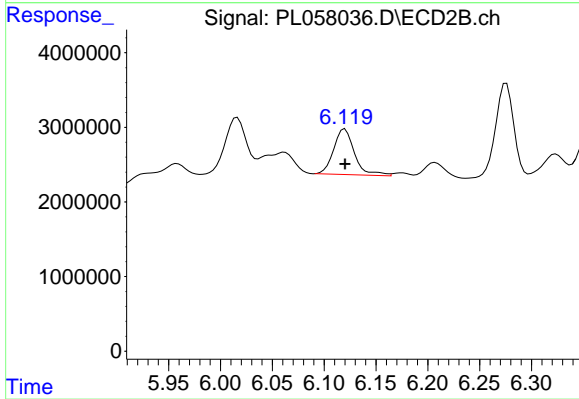
#10 gamma-Chlordane

R.T.: 6.062 min  
 Delta R.T.: 0.012 min  
 Response: -2879401  
 Conc: N.D.



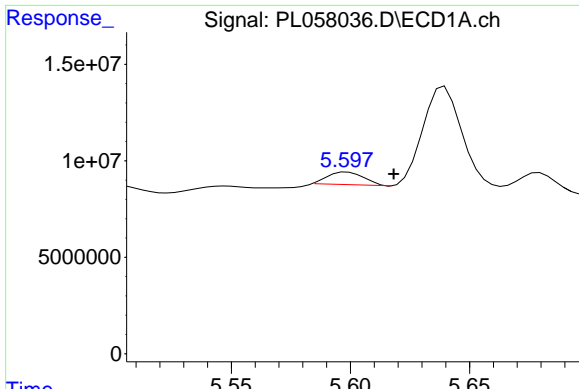
#11 alpha-Chlordane

R.T.: 5.439 min  
 Delta R.T.: -0.015 min  
 Response: 51403232  
 Conc: 3.86 ng/ml



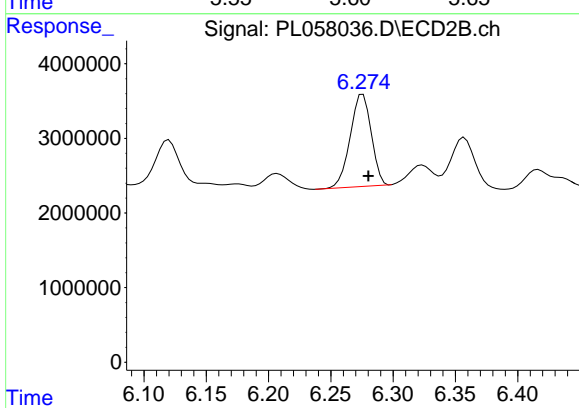
#11 alpha-Chlordane

R.T.: 6.120 min  
 Delta R.T.: 0.000 min  
 Response: 8561760  
 Conc: 2.62 ng/ml

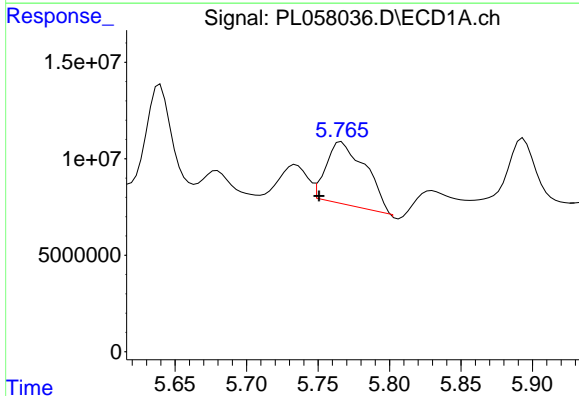


#12 4,4'-DDE  
 R.T.: 5.599 min  
 Delta R.T.: -0.019 min  
 Response: 6848237  
 Conc: 0.52 ng/ml

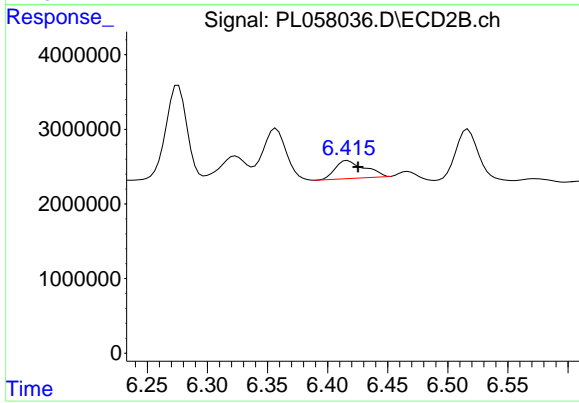
Instrument :  
 ECD\_L  
 ClientSampleId :



#12 4,4'-DDE  
 R.T.: 6.276 min  
 Delta R.T.: -0.004 min  
 Response: 14563998  
 Conc: 4.92 ng/ml

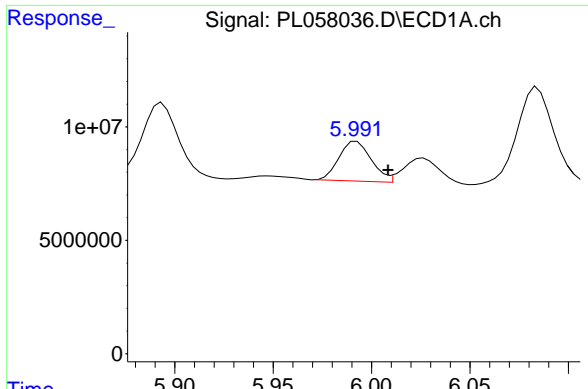


#13 Dieldrin  
 R.T.: 5.766 min  
 Delta R.T.: 0.016 min  
 Response: 61240524  
 Conc: 4.71 ng/ml



#13 Dieldrin  
 R.T.: 6.417 min  
 Delta R.T.: -0.009 min  
 Response: 4092345  
 Conc: 1.34 ng/ml

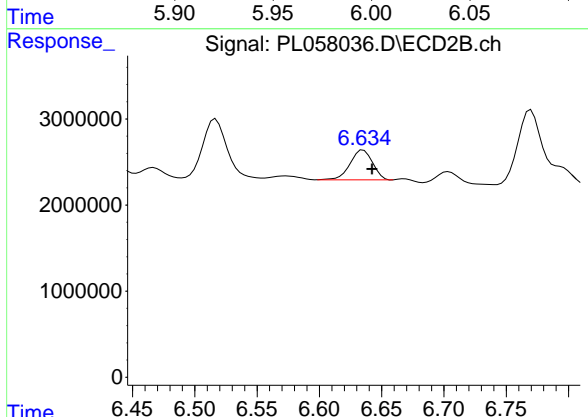




#14 Endrin

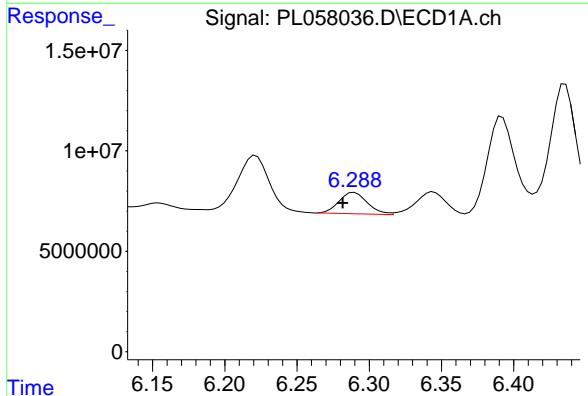
R.T.: 5.992 min  
 Delta R.T.: -0.016 min  
 Response: 20047439  
 Conc: 1.72 ng/ml

Instrument :  
 ECD\_L  
 ClientSampled :



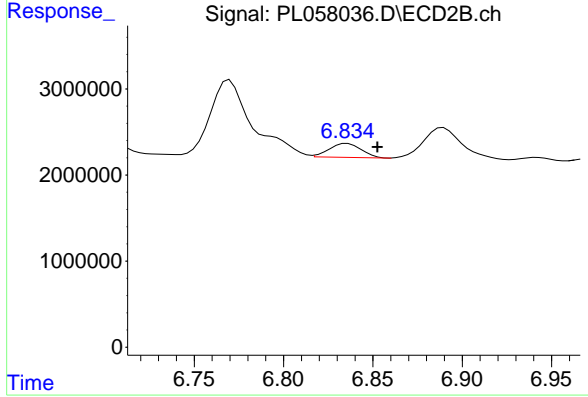
#14 Endrin

R.T.: 6.635 min  
 Delta R.T.: -0.007 min  
 Response: 4400716  
 Conc: 1.76 ng/ml



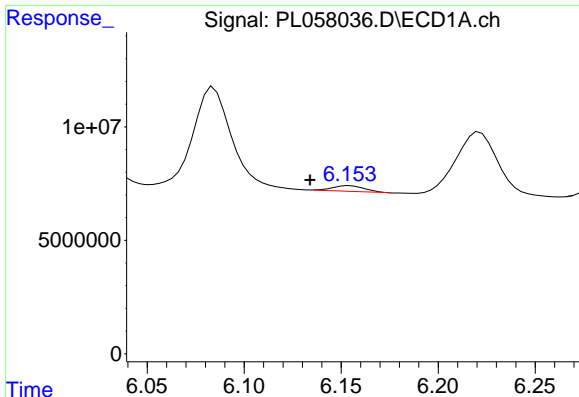
#15 Endosulfan II

R.T.: 6.290 min  
 Delta R.T.: 0.008 min  
 Response: 14470231  
 Conc: 1.31 ng/ml



#15 Endosulfan II

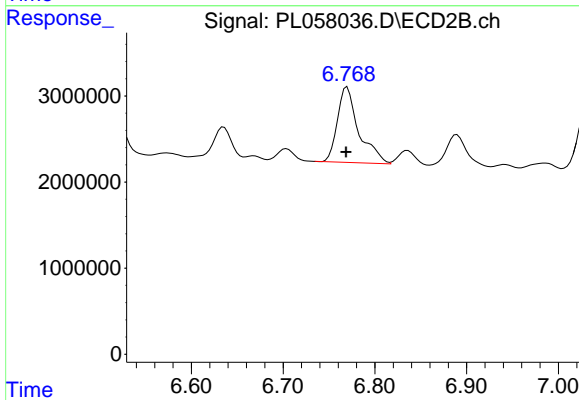
R.T.: 6.836 min  
 Delta R.T.: -0.017 min  
 Response: 2000101  
 Conc: 0.77 ng/ml



#16 4,4'-DDD

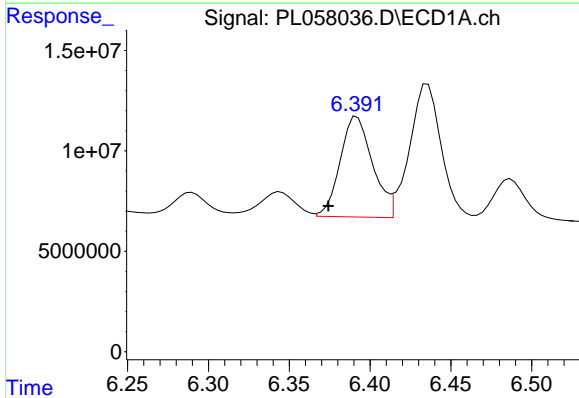
R.T.: 6.154 min  
 Delta R.T.: 0.020 min  
 Response: 2364046  
 Conc: 0.24 ng/ml

Instrument :  
 ECD\_L  
 ClientSampled :



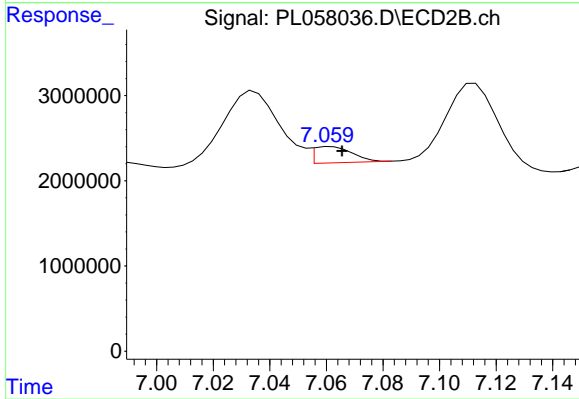
#16 4,4'-DDD

R.T.: 6.770 min  
 Delta R.T.: 0.001 min  
 Response: 14150807  
 Conc: 6.20 ng/ml



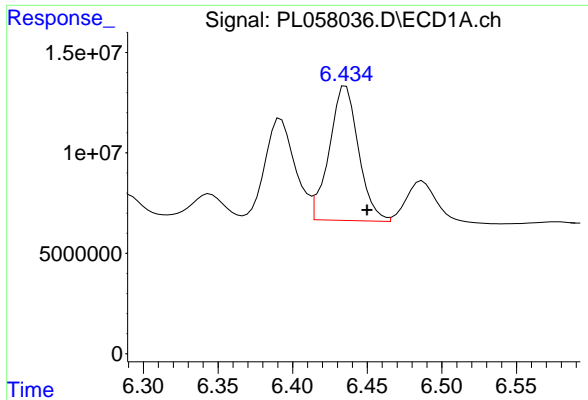
#17 4,4'-DDT

R.T.: 6.392 min  
 Delta R.T.: 0.018 min  
 Response: 69807240  
 Conc: 6.88 ng/ml



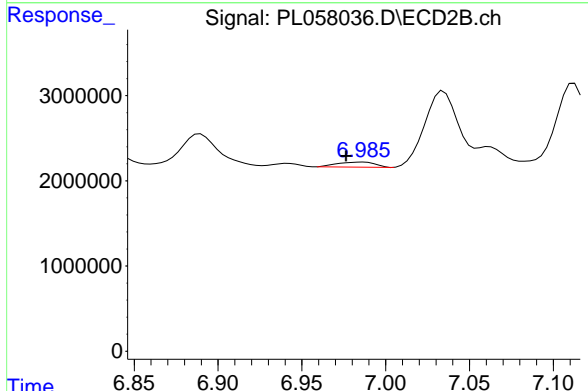
#17 4,4'-DDT

R.T.: 7.062 min  
 Delta R.T.: -0.004 min  
 Response: 1798074  
 Conc: 0.81 ng/ml

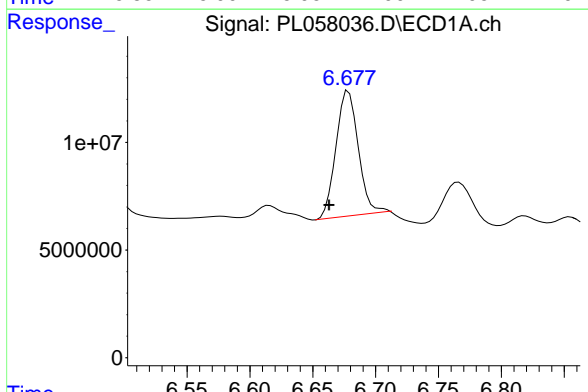


#18 Endrin aldehyde  
 R.T.: 6.436 min  
 Delta R.T.: -0.014 min  
 Response: 91595544  
 Conc: 9.80 ng/ml

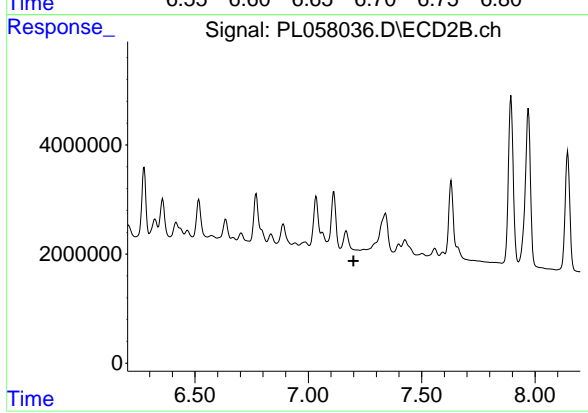
Instrument :  
 ECD\_L  
 ClientSampled :



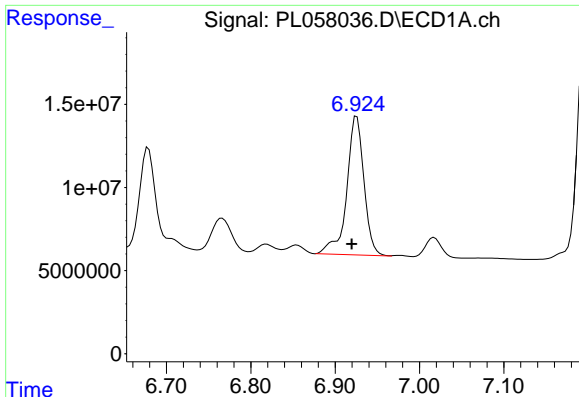
#18 Endrin aldehyde  
 R.T.: 6.987 min  
 Delta R.T.: 0.010 min  
 Response: 941624  
 Conc: 0.42 ng/ml



#19 Endosulfan Sulfate  
 R.T.: 6.678 min  
 Delta R.T.: 0.015 min  
 Response: 71344301  
 Conc: 7.02 ng/ml



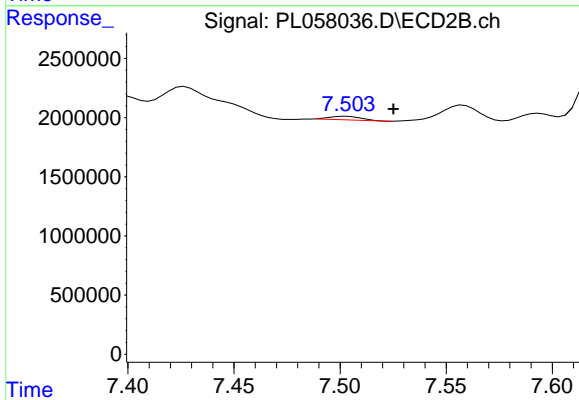
#19 Endosulfan Sulfate  
 R.T.: 0.000 min  
 Exp R.T. : 7.199 min  
 Response: 0  
 Conc: N.D.



#20 Methoxychlor

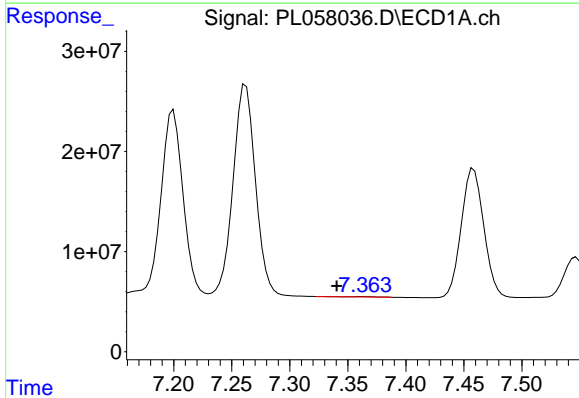
R.T.: 6.926 min  
 Delta R.T.: 0.006 min  
 Response: 118280012  
 Conc: 21.46 ng/ml

Instrument :  
 ECD\_L  
 ClientSampled :



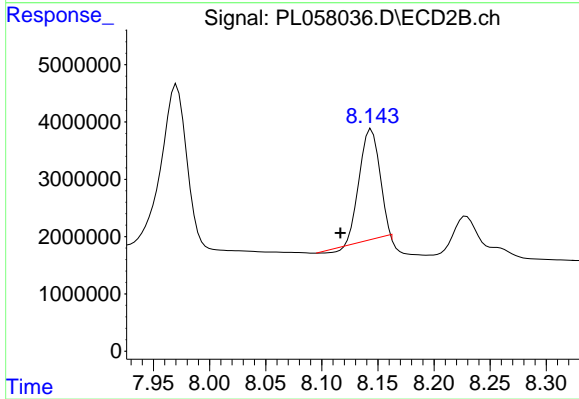
#20 Methoxychlor

R.T.: 7.503 min  
 Delta R.T.: -0.022 min  
 Response: 308405  
 Conc: 0.24 ng/ml



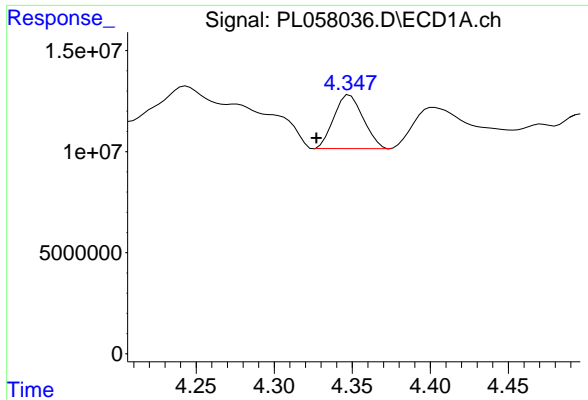
#22 Mirex

R.T.: 7.363 min  
 Delta R.T.: 0.022 min  
 Response: 313976  
 Conc: 0.04 ng/ml



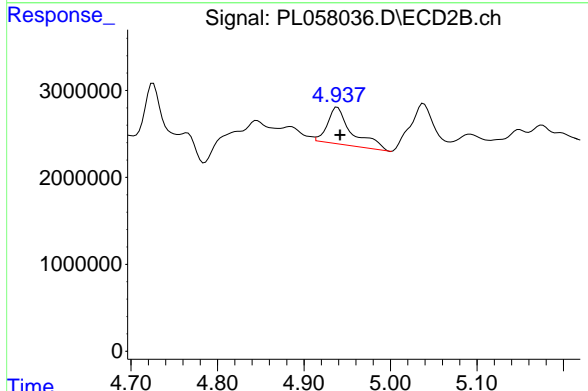
#22 Mirex

R.T.: 8.144 min  
 Delta R.T.: 0.027 min  
 Response: 23650412  
 Conc: 12.86 ng/ml

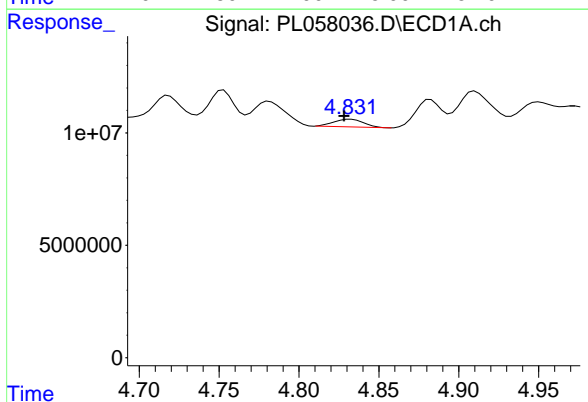


#23 Chlordane-1  
 R.T.: 4.348 min  
 Delta R.T.: 0.021 min  
 Response: 34690960  
 Conc: 93.80 ng/ml

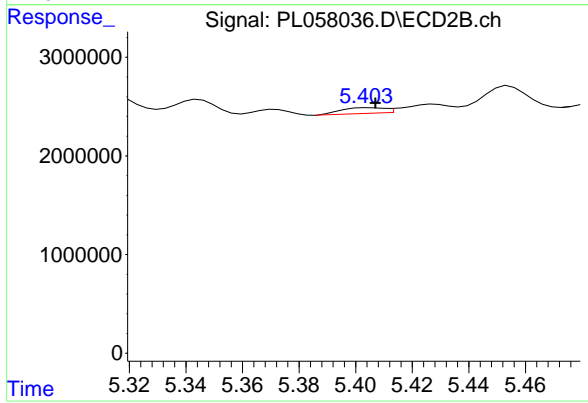
Instrument :  
 ECD\_L  
 ClientSampleId :



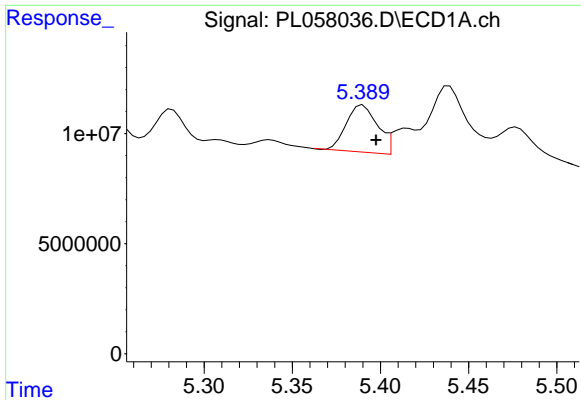
#23 Chlordane-1  
 R.T.: 4.939 min  
 Delta R.T.: -0.003 min  
 Response: 8354786  
 Conc: 94.74 ng/ml



#24 Chlordane-2  
 R.T.: 4.832 min  
 Delta R.T.: 0.004 min  
 Response: 4437107  
 Conc: 10.99 ng/ml



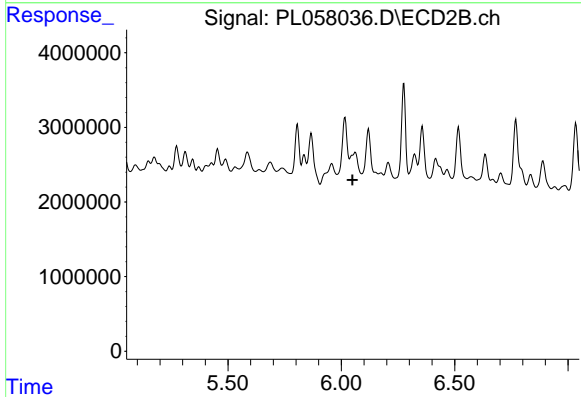
#24 Chlordane-2  
 R.T.: 5.405 min  
 Delta R.T.: -0.002 min  
 Response: 620108  
 Conc: 5.94 ng/ml



#25 Chlordane-3

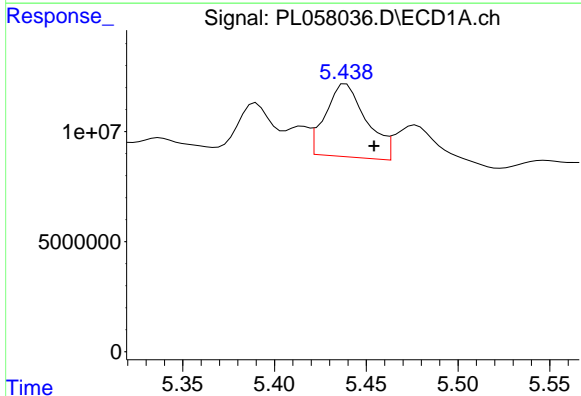
R.T.: 5.390 min  
 Delta R.T.: -0.008 min  
 Response: 26372664  
 Conc: 21.57 ng/ml

Instrument :  
 ECD\_L  
 ClientSampleId :



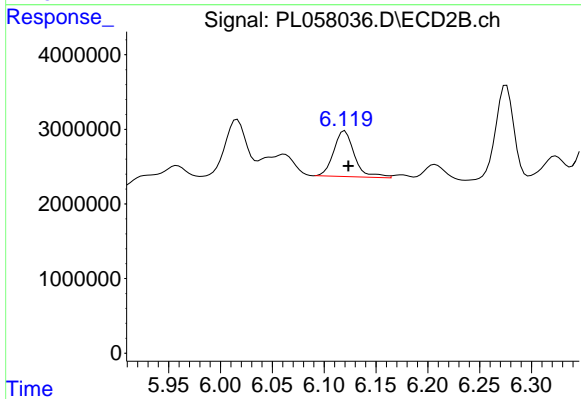
#25 Chlordane-3

R.T.: 6.062 min  
 Delta R.T.: 0.012 min  
 Response: -2879401  
 Conc: N.D.



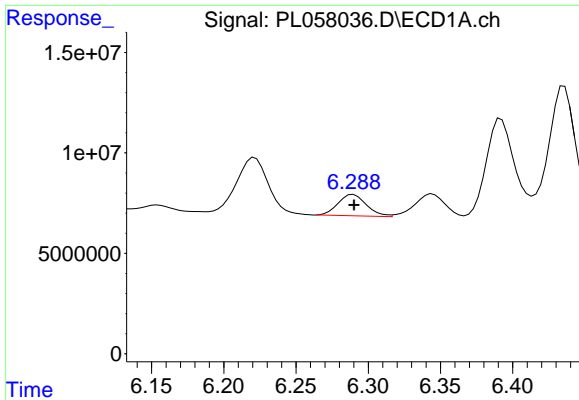
#26 Chlordane-4

R.T.: 5.439 min  
 Delta R.T.: -0.015 min  
 Response: 51403232  
 Conc: 49.42 ng/ml



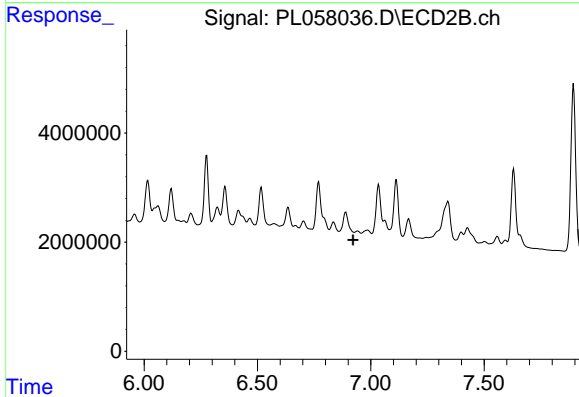
#26 Chlordane-4

R.T.: 6.120 min  
 Delta R.T.: -0.003 min  
 Response: 8561760  
 Conc: 16.31 ng/ml

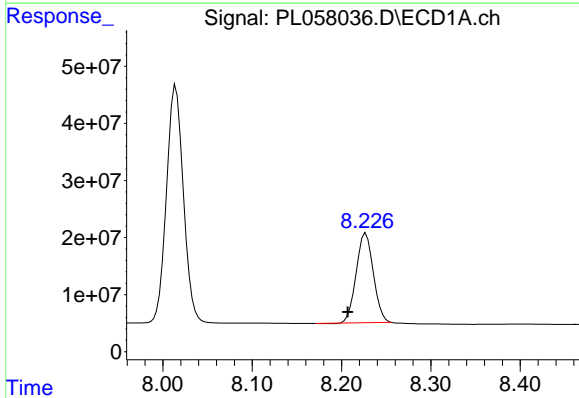


#27 Chlordane-5  
 R.T.: 6.290 min  
 Delta R.T.: 0.000 min  
 Response: 14470231  
 Conc: 38.25 ng/ml

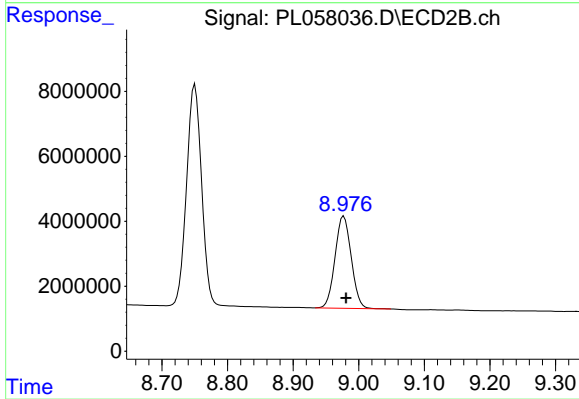
Instrument :  
 ECD\_L  
 ClientSampled :



#27 Chlordane-5  
 R.T.: 6.942 min  
 Delta R.T.: 0.020 min  
 Response: -1032041  
 Conc: N.D.



#28 Decachlorobiphenyl  
 R.T.: 8.227 min  
 Delta R.T.: 0.020 min  
 Response: 209826888  
 Conc: 20.35 ng/ml



#28 Decachlorobiphenyl  
 R.T.: 8.977 min  
 Delta R.T.: -0.004 min  
 Response: 48538233  
 Conc: 21.73 ng/ml