

Data Path : Z:\pestpcbsrv\HPCHEM1\ECD\_L\Data\PL041525\  
 Data File : PL095227.D  
 Signal(s) : Signal #1: ECD1A.ch Signal #2: ECD2B.ch  
 Acq On : 15 Apr 2025 11:35  
 Operator : AR\AJ  
 Sample : Q1784-01 10X  
 Misc :  
 ALS Vial : 5 Sample Multiplier: 1

**Instrument :**  
 ECD\_L  
**ClientSampleId :**  
 OR-01-41125

**Manual Integrations**  
**APPROVED**

Reviewed By :Abdul Mirza 04/16/2025  
 Supervised By :mohammad ahmed 04/16/2025

Integration File signal 1: autoint1.e  
 Integration File signal 2: autoint2.e  
 Quant Time: Apr 15 12:02:01 2025  
 Quant Method : Z:\pestpcbsrv\HPCHEM1\ECD\_L\methods\PL041425.M  
 Quant Title : GC Extractables  
 QLast Update : Mon Apr 14 19:12:49 2025  
 Response via : Initial Calibration  
 Integrator: ChemStation

Volume Inj. : 1 µl  
 Signal #1 Phase : ZB-MR1 Signal #2 Phase: ZB-MR2  
 Signal #1 Info : 30M x 0.32mm x0.5 Signal #2 Info : 30M x 0.32mm x0.25µm

Compound	RT#1	RT#2	Resp#1	Resp#2	ng/ml	ng/ml
-----						
System Monitoring Compounds						
1) SA Tetrachlo...	3.534	2.768	2808332	6721367	1.024m	1.806 #
28) SA Decachlor...	9.054	7.901	5670587	7751086	2.355m	1.762m#

Target Compounds

(f)=RT Delta > 1/2 Window (#)=Amounts differ by > 25% (m)=manual int.

Data Path : Z:\pestpcbsrv\HPCHEM1\ECD\_L\Data\PL041525\  
 Data File : PL095227.D  
 Signal(s) : Signal #1: ECD1A.ch Signal #2: ECD2B.ch  
 Acq On : 15 Apr 2025 11:35  
 Operator : AR\AJ  
 Sample : Q1784-01 10X  
 Misc :  
 ALS Vial : 5 Sample Multiplier: 1

**Instrument :**

ECD\_L

**ClientSampleId :**

OR-01-41125

**Manual Integrations**

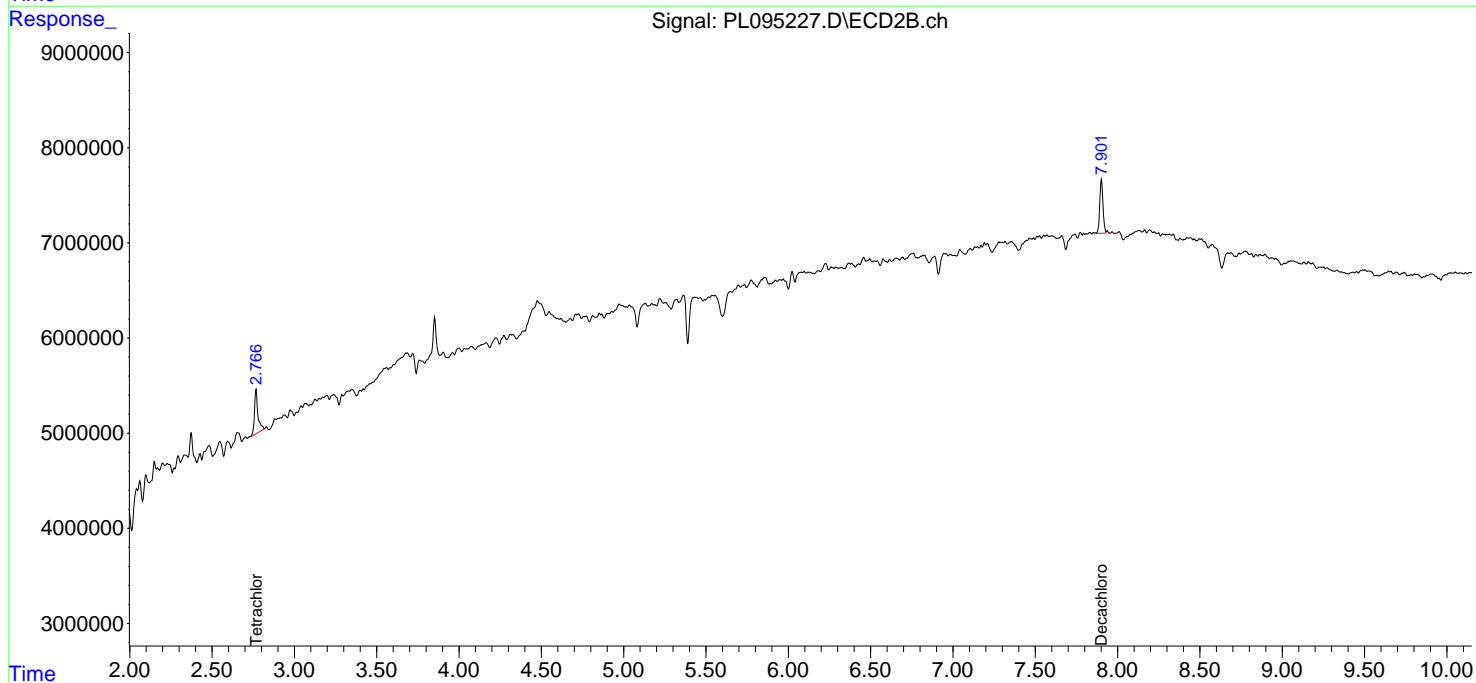
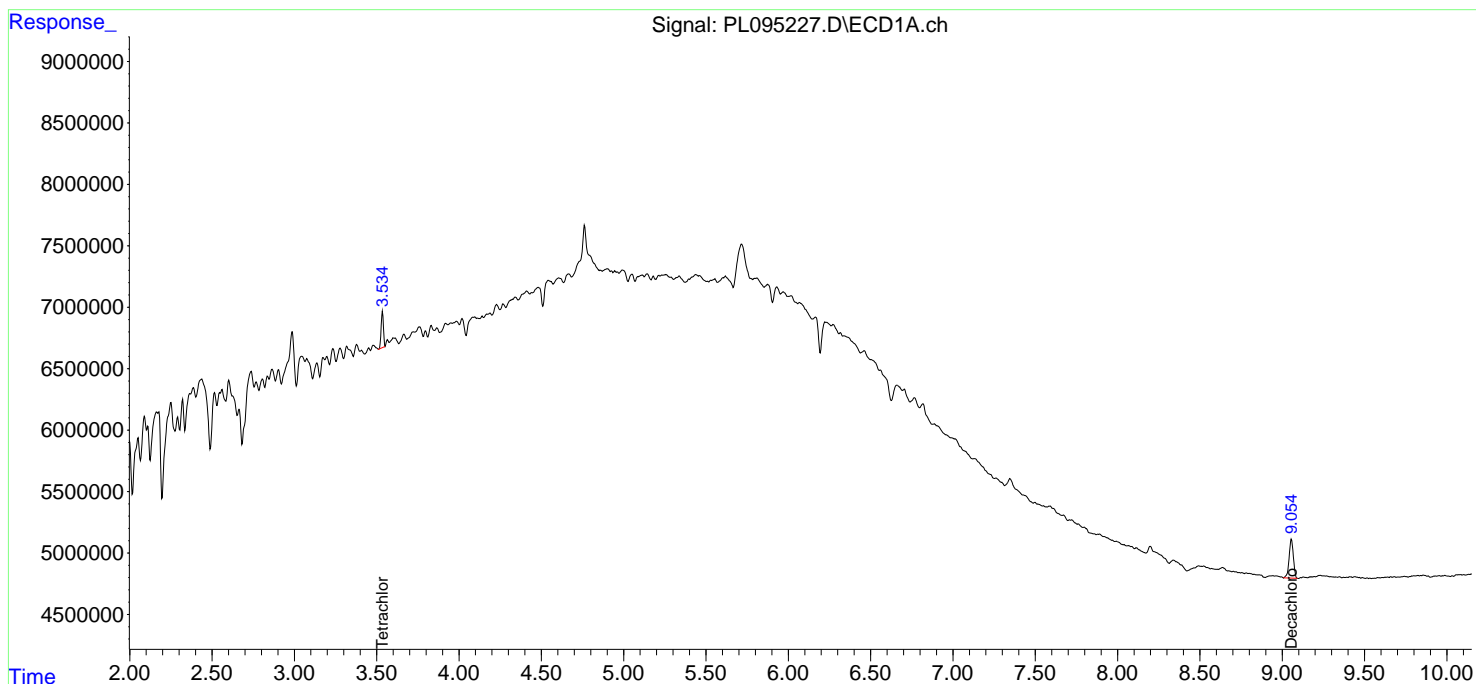
**APPROVED**

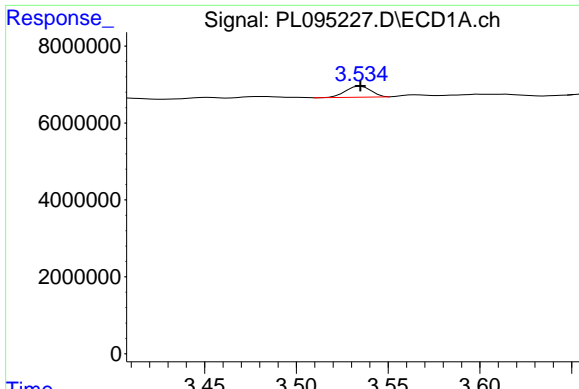
Reviewed By :Abdul Mirza 04/16/2025

Supervised By :mohammad ahmed 04/16/2025

Integration File signal 1: autoint1.e  
 Integration File signal 2: autoint2.e  
 Quant Time: Apr 15 12:02:01 2025  
 Quant Method : Z:\pestpcbsrv\HPCHEM1\ECD\_L\methods\PL041425.M  
 Quant Title : GC Extractables  
 QLast Update : Mon Apr 14 19:12:49 2025  
 Response via : Initial Calibration  
 Integrator: ChemStation

Volume Inj. : 1 µl  
 Signal #1 Phase : ZB-MR1 Signal #2 Phase: ZB-MR2  
 Signal #1 Info : 30M x 0.32mm x0.5 Signal #2 Info : 30M x 0.32mm x0.25µm



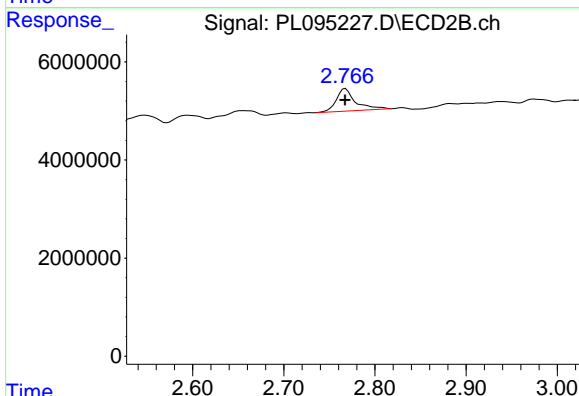


#1 Tetrachloro-m-xylene  
 R.T.: 3.534 min  
 Delta R.T.: -0.001 min  
 Response: 2808332  
 Conc: 1.02 ng/ml

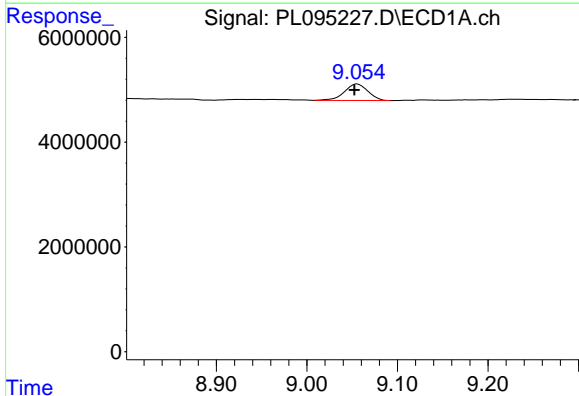
Instrument : ECD\_L  
 ClientSampleId : OR-01-41125

Manual Integrations  
 APPROVED

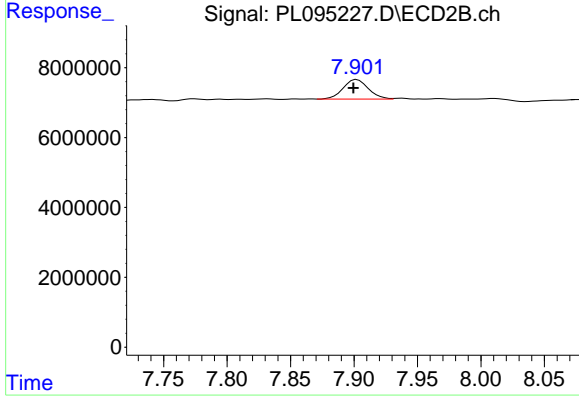
Reviewed By :Abdul Mirza 04/16/2025  
 Supervised By :mohammad ahmed 04/16/2025



#1 Tetrachloro-m-xylene  
 R.T.: 2.768 min  
 Delta R.T.: 0.000 min  
 Response: 6721367  
 Conc: 1.81 ng/ml



#28 Decachlorobiphenyl  
 R.T.: 9.054 min  
 Delta R.T.: 0.002 min  
 Response: 5670587  
 Conc: 2.36 ng/ml m



#28 Decachlorobiphenyl  
 R.T.: 7.901 min  
 Delta R.T.: 0.001 min  
 Response: 7751086  
 Conc: 1.76 ng/ml m