

Data Path : Z:\pestpcbsrv\HPCHEM1\ECD_L\Data\PL041525\
 Data File : PL095233.D
 Signal(s) : Signal #1: ECD1A.ch Signal #2: ECD2B.ch
 Acq On : 15 Apr 2025 13:30
 Operator : AR\AJ
 Sample : Q1785-01 10X
 Misc :
 ALS Vial : 11 Sample Multiplier: 1

Instrument :
 ECD_L
ClientSampleId :
 HR-02-041125

Manual Integrations
APPROVED

Reviewed By :Abdul Mirza 04/16/2025
 Supervised By :mohammad ahmed 04/16/2025

Integration File signal 1: autoint1.e
 Integration File signal 2: autoint2.e
 Quant Time: Apr 15 14:14:07 2025
 Quant Method : Z:\pestpcbsrv\HPCHEM1\ECD_L\methods\PL041425.M
 Quant Title : GC Extractables
 QLast Update : Mon Apr 14 19:12:49 2025
 Response via : Initial Calibration
 Integrator: ChemStation

Volume Inj. : 1 µl
 Signal #1 Phase : ZB-MR1 Signal #2 Phase: ZB-MR2
 Signal #1 Info : 30M x 0.32mm x0.5 Signal #2 Info : 30M x 0.32mm x0.25µm

Compound	RT#1	RT#2	Resp#1	Resp#2	ng/ml	ng/ml

System Monitoring Compounds						
1) SA Tetrachlo...	3.540	2.768	2942960	4780558	1.073m	1.285
28) SA Decachlor...	9.064	7.904	5081327	5198483	2.110m	1.182m#

Target Compounds

(f)=RT Delta > 1/2 Window (#)=Amounts differ by > 25% (m)=manual int.

Data Path : Z:\pestpcbsrv\HPCHEM1\ECD_L\Data\PL041525\
 Data File : PL095233.D
 Signal(s) : Signal #1: ECD1A.ch Signal #2: ECD2B.ch
 Acq On : 15 Apr 2025 13:30
 Operator : AR\AJ
 Sample : Q1785-01 10X
 Misc :
 ALS Vial : 11 Sample Multiplier: 1

Instrument :

ECD_L

ClientSampleId :

HR-02-041125

Manual Integrations

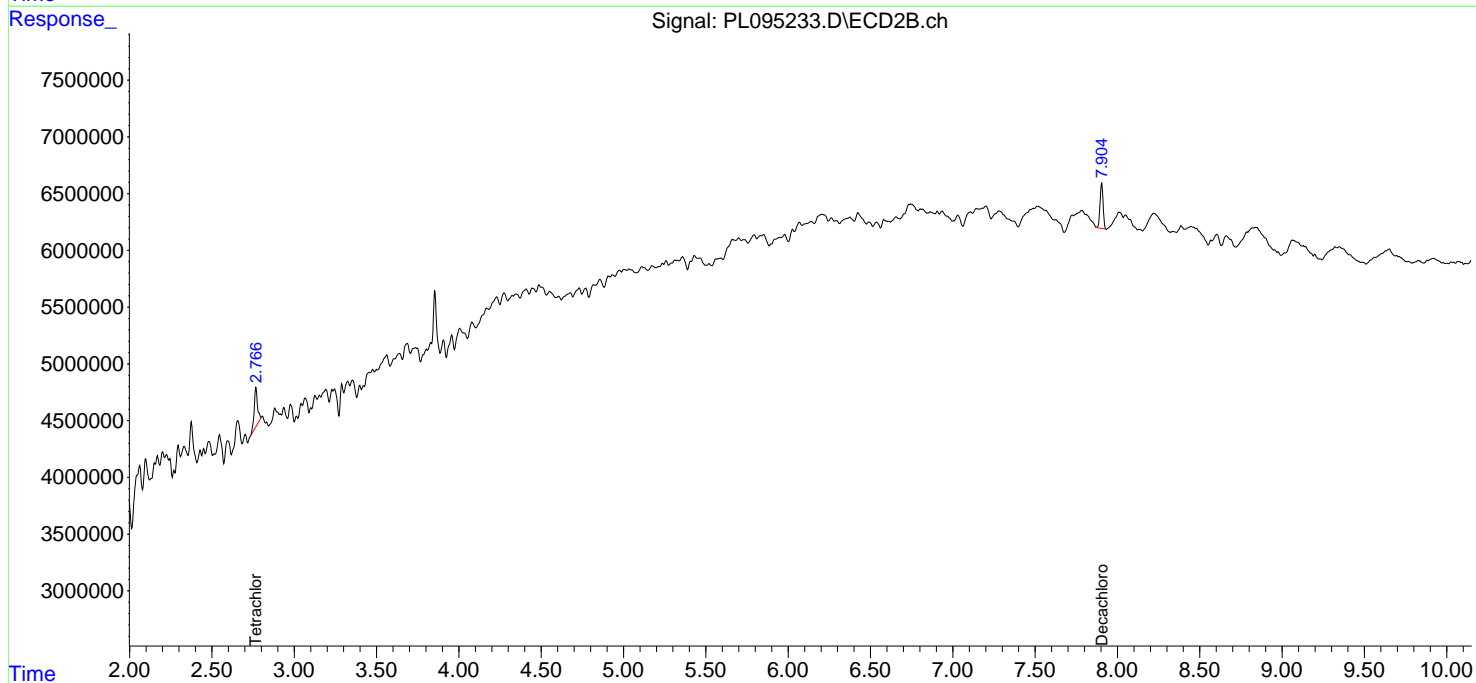
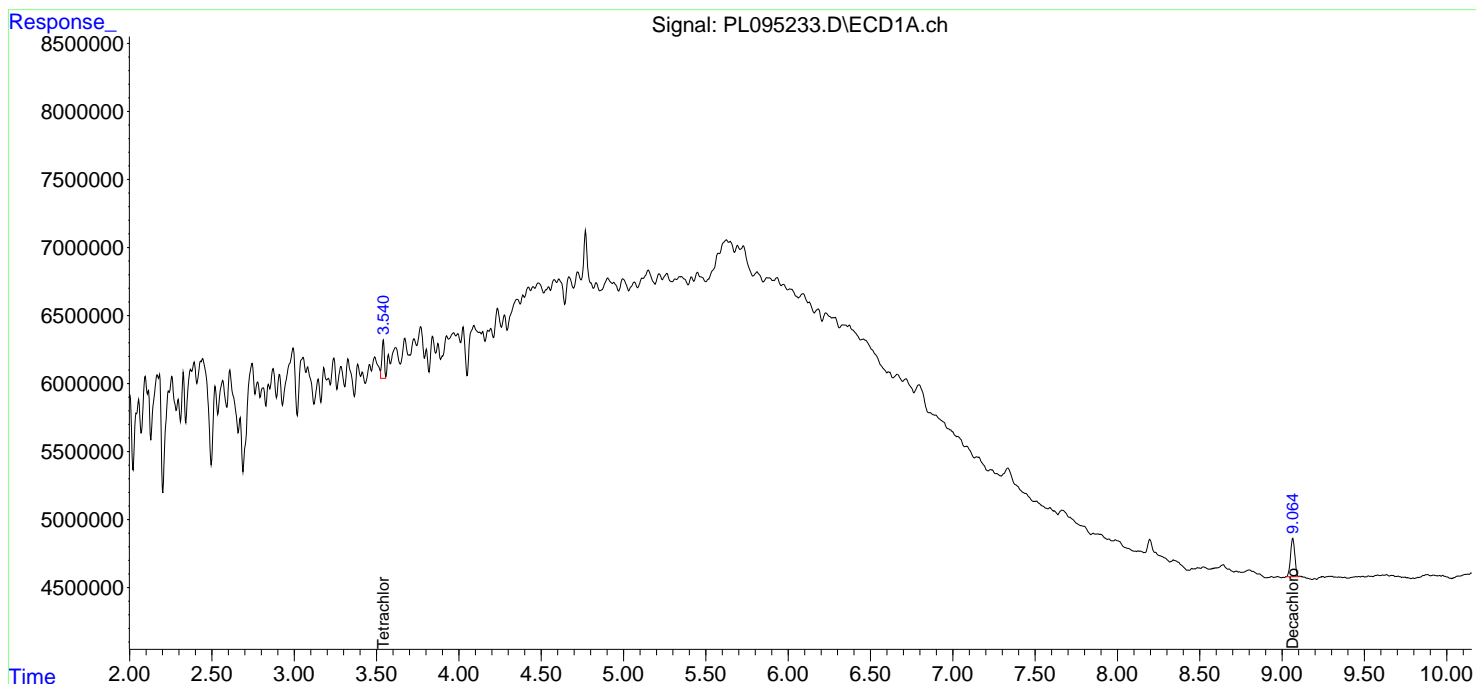
APPROVED

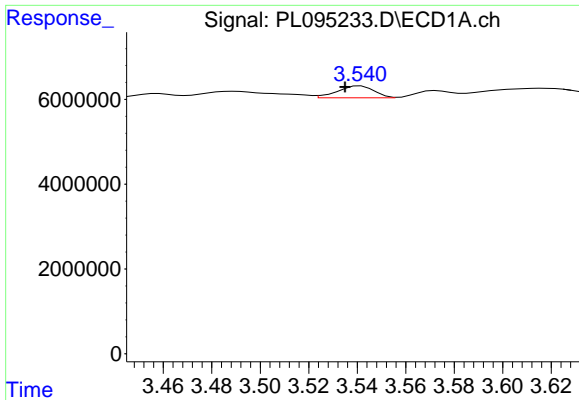
Reviewed By :Abdul Mirza 04/16/2025

Supervised By :mohammad ahmed 04/16/2025

Integration File signal 1: autoint1.e
 Integration File signal 2: autoint2.e
 Quant Time: Apr 15 14:14:07 2025
 Quant Method : Z:\pestpcbsrv\HPCHEM1\ECD_L\methods\PL041425.M
 Quant Title : GC Extractables
 QLast Update : Mon Apr 14 19:12:49 2025
 Response via : Initial Calibration
 Integrator: ChemStation

Volume Inj. : 1 µl
 Signal #1 Phase : ZB-MR1 Signal #2 Phase: ZB-MR2
 Signal #1 Info : 30M x 0.32mm x0.5 Signal #2 Info : 30M x 0.32mm x0.25µm





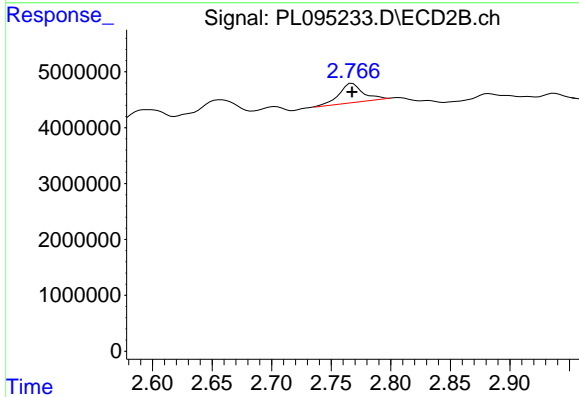
#1 Tetrachloro-m-xylene

R.T.: 3.540 min
 Delta R.T.: 0.005 min
 Response: 2942960
 Conc: 1.07 ng/ml

Instrument : ECD_L
 ClientSampleId : HR-02-041125

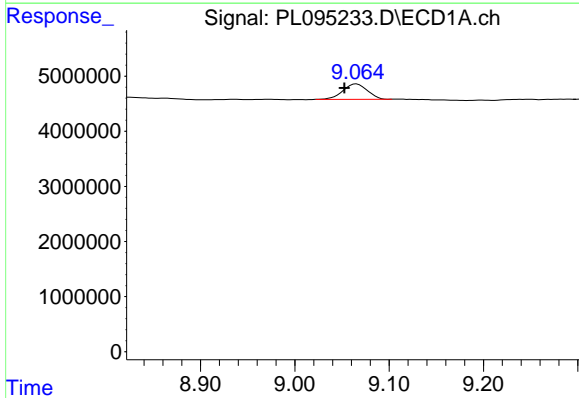
Manual Integrations
 APPROVED

Reviewed By :Abdul Mirza 04/16/2025
 Supervised By :mohammad ahmed 04/16/2025



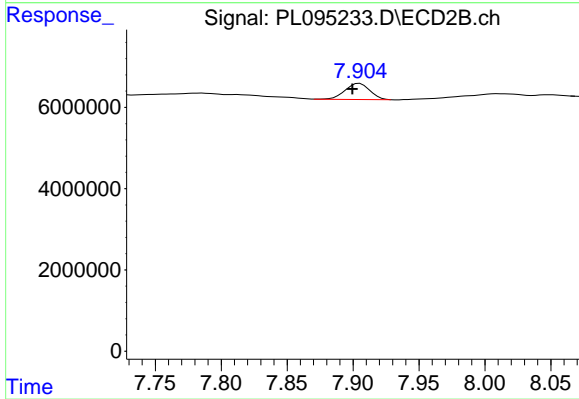
#1 Tetrachloro-m-xylene

R.T.: 2.768 min
 Delta R.T.: 0.000 min
 Response: 4780558
 Conc: 1.28 ng/ml



#28 Decachlorobiphenyl

R.T.: 9.064 min
 Delta R.T.: 0.011 min
 Response: 5081327
 Conc: 2.11 ng/ml m



#28 Decachlorobiphenyl

R.T.: 7.904 min
 Delta R.T.: 0.004 min
 Response: 5198483
 Conc: 1.18 ng/ml m