

Data Path : Z:\pestpcbsrv\HPCHEM1\ECD_L\Data\PL041525\
 Data File : PL095251.D
 Signal(s) : Signal #1: ECD1A.ch Signal #2: ECD2B.ch
 Acq On : 15 Apr 2025 18:52
 Operator : AR\AJ
 Sample : PEM
 Misc :
 ALS Vial : 3 Sample Multiplier: 1

Instrument :
 ECD_L
ClientSampleId :
 PEM

Manual Integrations
APPROVED

Reviewed By :Abdul Mirza 04/16/2025
 Supervised By :mohammad ahmed 04/16/2025

Integration File signal 1: autoint1.e
 Integration File signal 2: autoint2.e
 Quant Time: Apr 16 01:26:56 2025
 Quant Method : Z:\pestpcbsrv\HPCHEM1\ECD_L\methods\PL041425.M
 Quant Title : GC Extractables
 QLast Update : Mon Apr 14 19:12:49 2025
 Response via : Initial Calibration
 Integrator: ChemStation

Volume Inj. : 1 µl
 Signal #1 Phase : ZB-MR1 Signal #2 Phase: ZB-MR2
 Signal #1 Info : 30M x 0.32mm x0.5 Signal #2 Info : 30M x 0.32mm x0.25µm

Compound	RT#1	RT#2	Resp#1	Resp#2	ng/ml	ng/ml

System Monitoring Compounds						
1) SA Tetrachlo...	3.536	2.768	67093678	86591314	24.457	23.270
28) SA Decachlor...	9.055	7.902	53914911	89567032	22.393	20.360
Target Compounds						
2) A alpha-BHC	3.992	3.269	52264494	62972579	13.004	11.372
3) MA gamma-BHC...	4.324	3.599	49467232	57875943	12.863	10.996
6) B beta-BHC	4.524	3.900	23227957	28410855	13.248	12.261
12) B 4,4'-DDE	6.191	5.220	584856	559296	0.179m	0.116m#
14) MA Endrin	6.571	5.628	150.4E6	246.6E6	57.717m	59.042
16) A 4,4'-DDD	6.708	5.776	7852677	11678530	3.093m	3.002
17) MA 4,4'-DDT	7.024	6.026	245.0E6	451.8E6	96.262	108.453
18) B Endrin al...	6.922	6.103	3659464	7316387	1.663m	2.171 #
20) A Methoxychlor	7.501	6.602	296.5E6	526.2E6	221.393	234.333
21) B Endrin ke...	7.643	6.831	6762427	11570508	2.343	2.295

(f)=RT Delta > 1/2 Window (#)=Amounts differ by > 25% (m)=manual int.

Data Path : Z:\pestpcbsrv\HPCHEM1\ECD_L\Data\PL041525\
 Data File : PL095251.D
 Signal(s) : Signal #1: ECD1A.ch Signal #2: ECD2B.ch
 Acq On : 15 Apr 2025 18:52
 Operator : AR\AJ
 Sample : PEM
 Misc :
 ALS Vial : 3 Sample Multiplier: 1

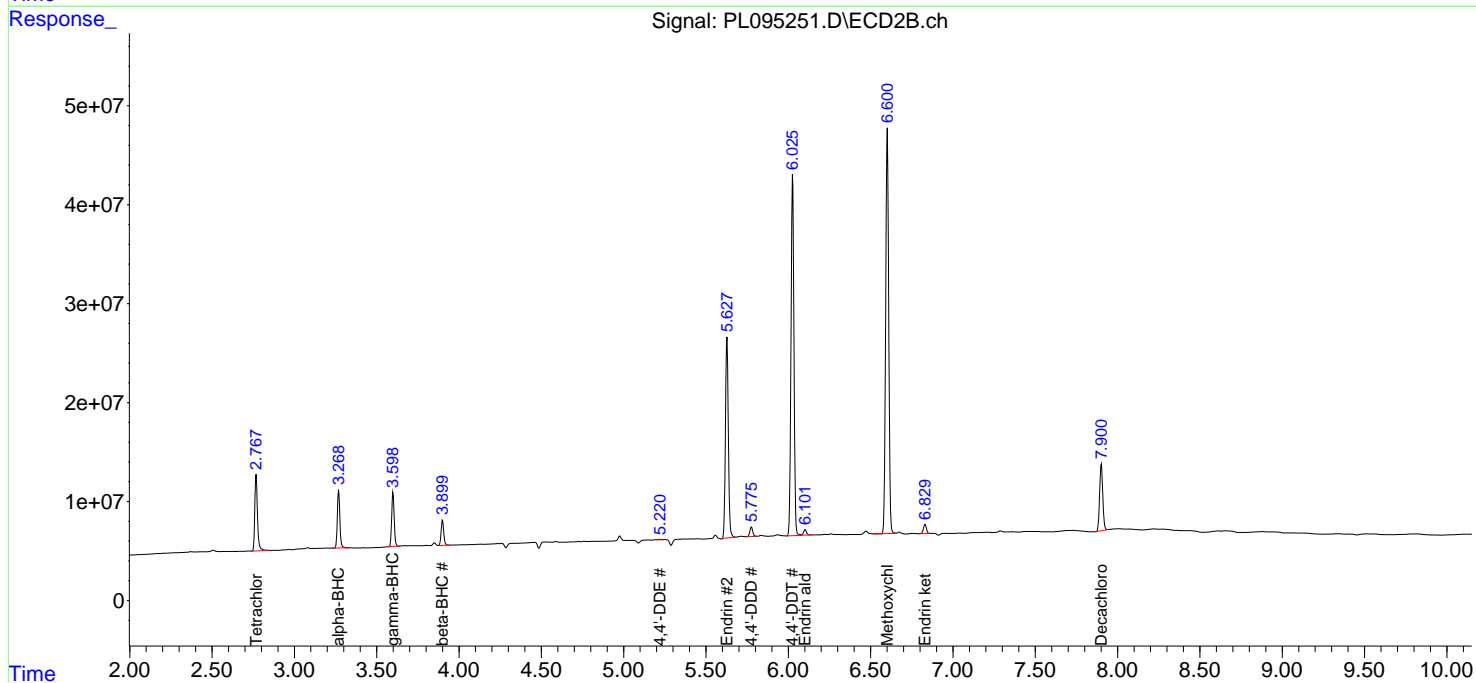
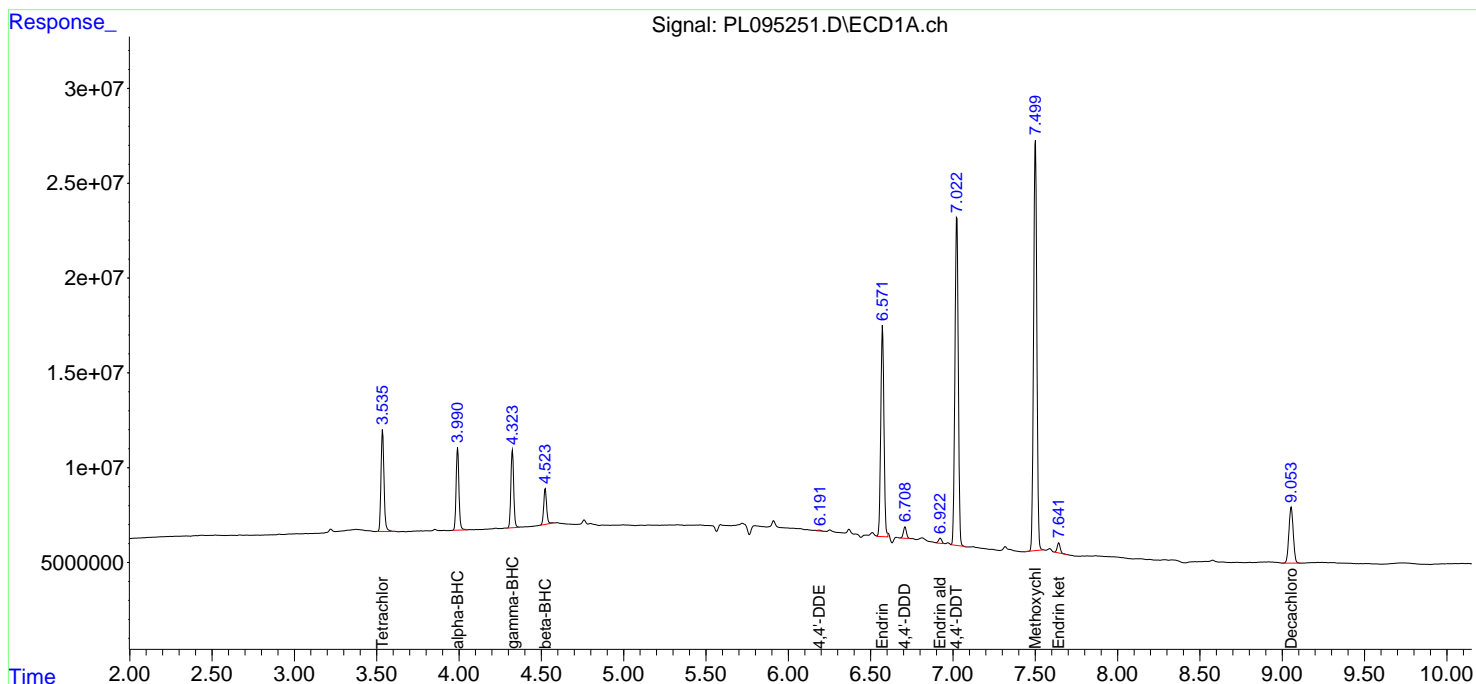
Instrument :
 ECD_L
ClientSampleId :
 PEM

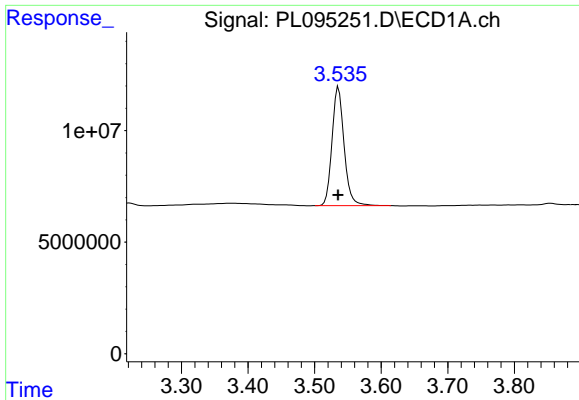
**Manual Integrations
 APPROVED**

Reviewed By :Abdul Mirza 04/16/2025
 Supervised By :mohammad ahmed 04/16/2025

Integration File signal 1: autoint1.e
 Integration File signal 2: autoint2.e
 Quant Time: Apr 16 01:26:56 2025
 Quant Method : Z:\pestpcbsrv\HPCHEM1\ECD_L\methods\PL041425.M
 Quant Title : GC Extractables
 QLast Update : Mon Apr 14 19:12:49 2025
 Response via : Initial Calibration
 Integrator: ChemStation

Volume Inj. : 1 µl
 Signal #1 Phase : ZB-MR1 Signal #2 Phase: ZB-MR2
 Signal #1 Info : 30M x 0.32mm x0.5 Signal #2 Info : 30M x 0.32mm x0.25µm





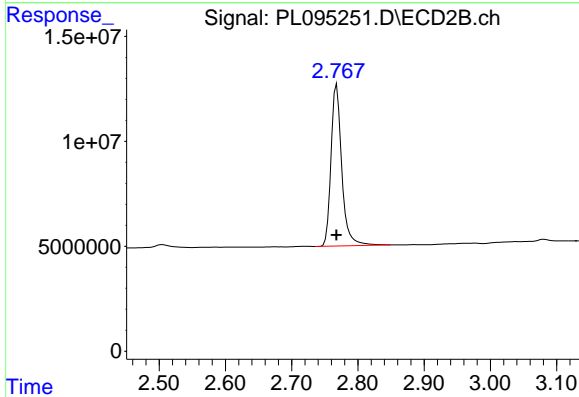
#1 Tetrachloro-m-xylene

R.T.: 3.536 min
 Delta R.T.: 0.001 min
 Response: 67093678
 Conc: 24.46 ng/ml

Instrument :
 ECD_L
 ClientSampleId :
 PEM

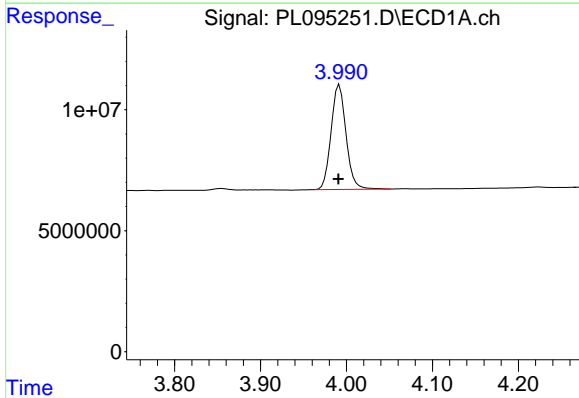
Manual Integrations
 APPROVED

Reviewed By :Abdul Mirza 04/16/2025
 Supervised By :mohammad ahmed 04/16/2025



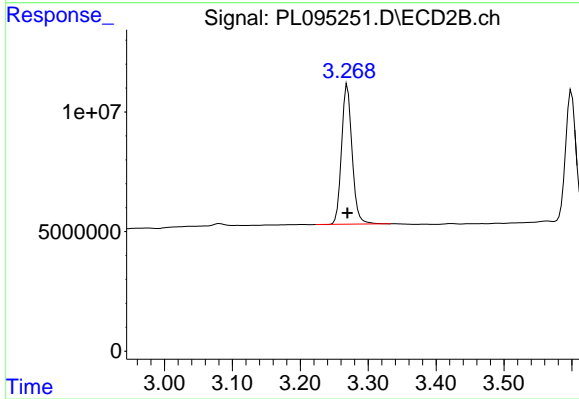
#1 Tetrachloro-m-xylene

R.T.: 2.768 min
 Delta R.T.: 0.000 min
 Response: 86591314
 Conc: 23.27 ng/ml



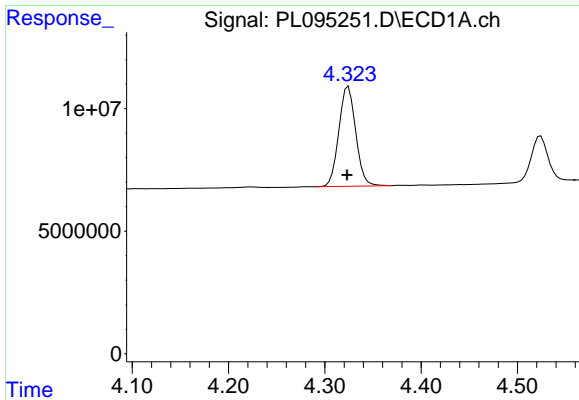
#2 alpha-BHC

R.T.: 3.992 min
 Delta R.T.: 0.001 min
 Response: 52264494
 Conc: 13.00 ng/ml



#2 alpha-BHC

R.T.: 3.269 min
 Delta R.T.: 0.000 min
 Response: 62972579
 Conc: 11.37 ng/ml

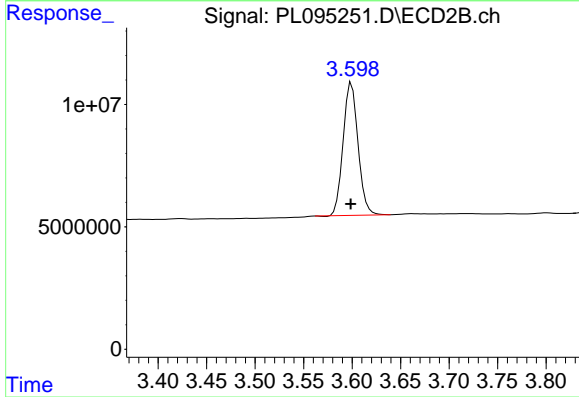


#3 gamma-BHC (Lindane)
 R.T.: 4.324 min
 Delta R.T.: 0.001 min
 Response: 49467232
 Conc: 12.86 ng/ml

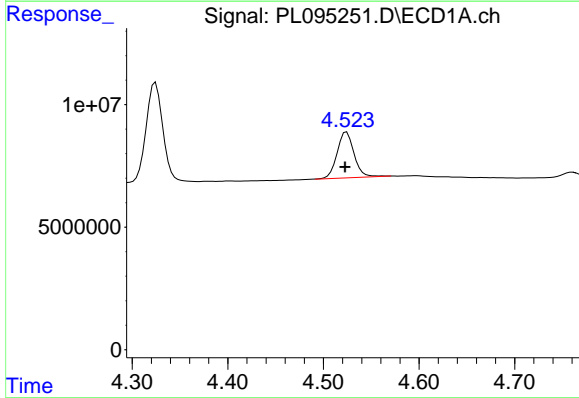
Instrument :
 ECD_L
 ClientSampleId :
 PEM

Manual Integrations
 APPROVED

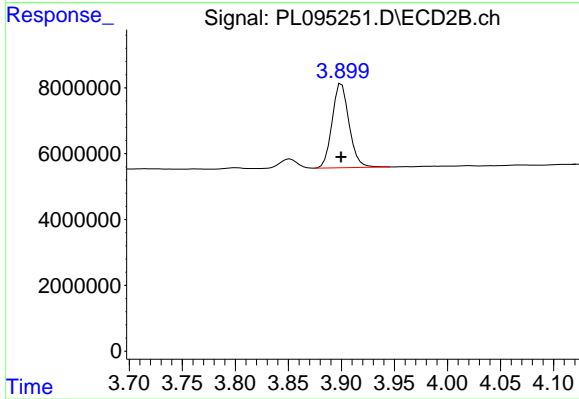
Reviewed By :Abdul Mirza 04/16/2025
 Supervised By :mohammad ahmed 04/16/2025



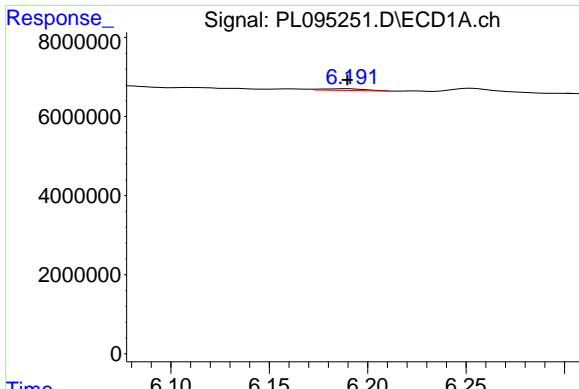
#3 gamma-BHC (Lindane)
 R.T.: 3.599 min
 Delta R.T.: 0.000 min
 Response: 57875943
 Conc: 11.00 ng/ml



#6 beta-BHC
 R.T.: 4.524 min
 Delta R.T.: 0.001 min
 Response: 23227957
 Conc: 13.25 ng/ml



#6 beta-BHC
 R.T.: 3.900 min
 Delta R.T.: 0.000 min
 Response: 28410855
 Conc: 12.26 ng/ml



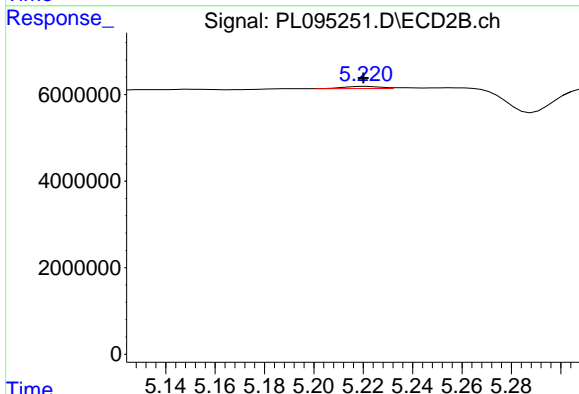
#12 4,4'-DDE

R.T.: 6.191 min
 Delta R.T.: 0.001 min
 Response: 584856
 Conc: 0.18 ng/ml

Instrument : ECD_L
 ClientSampleId : PEM

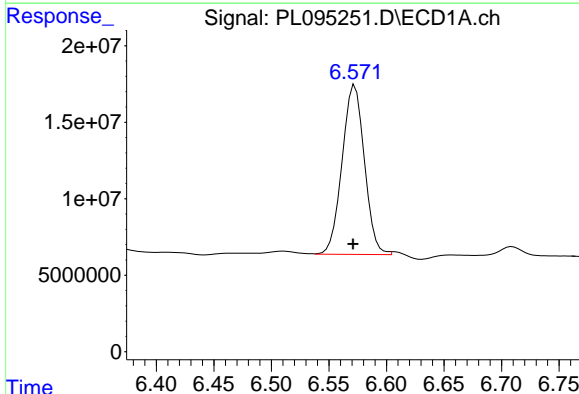
Manual Integrations
 APPROVED

Reviewed By :Abdul Mirza 04/16/2025
 Supervised By :mohammad ahmed 04/16/2025



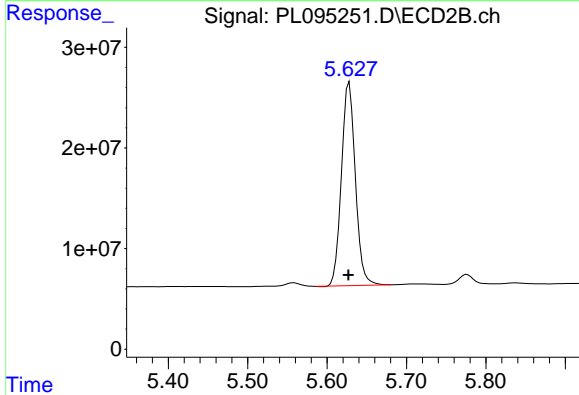
#12 4,4'-DDE

R.T.: 5.220 min
 Delta R.T.: 0.000 min
 Response: 559296
 Conc: 0.12 ng/ml m



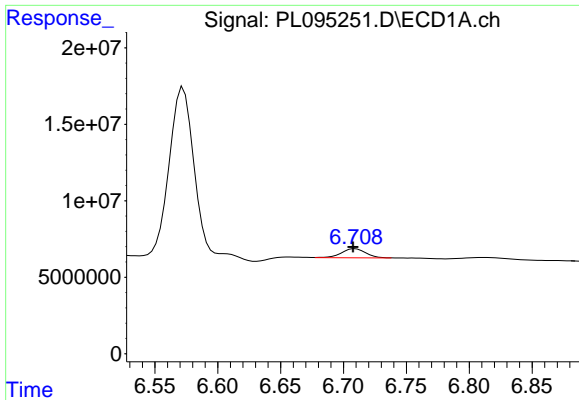
#14 Endrin

R.T.: 6.571 min
 Delta R.T.: 0.000 min
 Response: 150416897
 Conc: 57.72 ng/ml m



#14 Endrin

R.T.: 5.628 min
 Delta R.T.: 0.000 min
 Response: 246641218
 Conc: 59.04 ng/ml



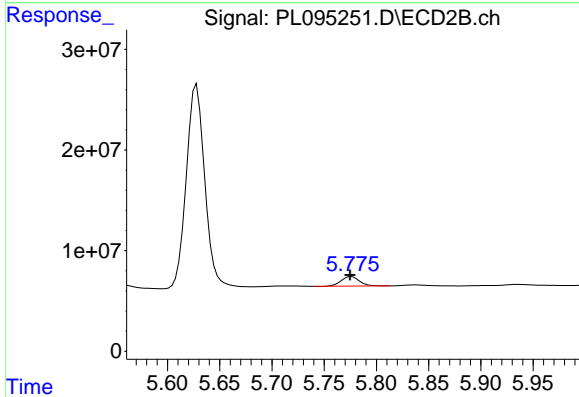
#16 4,4'-DDD

R.T.: 6.708 min
 Delta R.T.: 0.000 min
 Response: 7852677
 Conc: 3.09 ng/ml

Instrument :
 ECD_L
 ClientSampleId :
 PEM

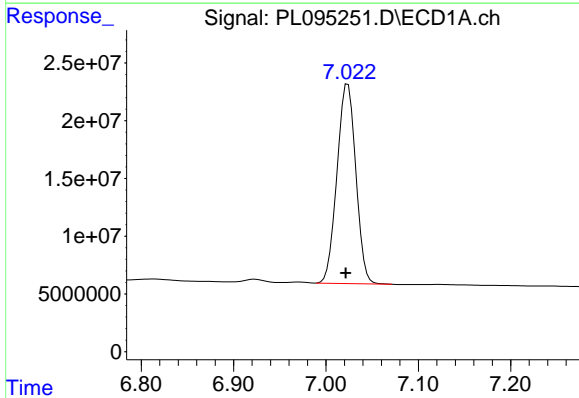
Manual Integrations
 APPROVED

Reviewed By :Abdul Mirza 04/16/2025
 Supervised By :mohammad ahmed 04/16/2025



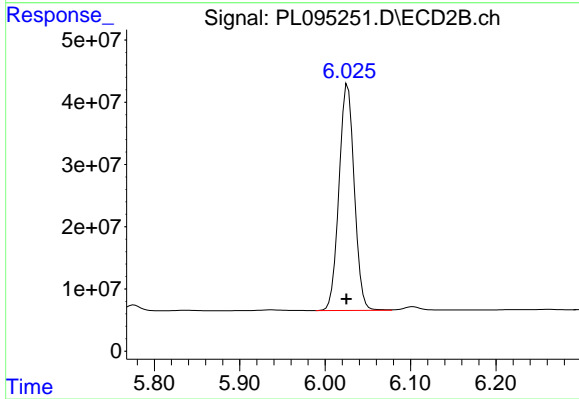
#16 4,4'-DDD

R.T.: 5.776 min
 Delta R.T.: 0.001 min
 Response: 11678530
 Conc: 3.00 ng/ml



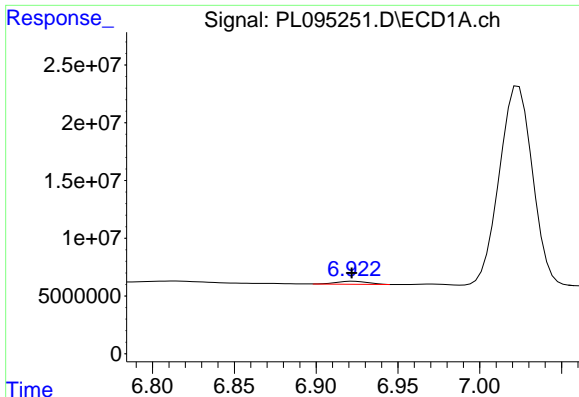
#17 4,4'-DDT

R.T.: 7.024 min
 Delta R.T.: 0.002 min
 Response: 245039646
 Conc: 96.26 ng/ml



#17 4,4'-DDT

R.T.: 6.026 min
 Delta R.T.: 0.002 min
 Response: 451812777
 Conc: 108.45 ng/ml



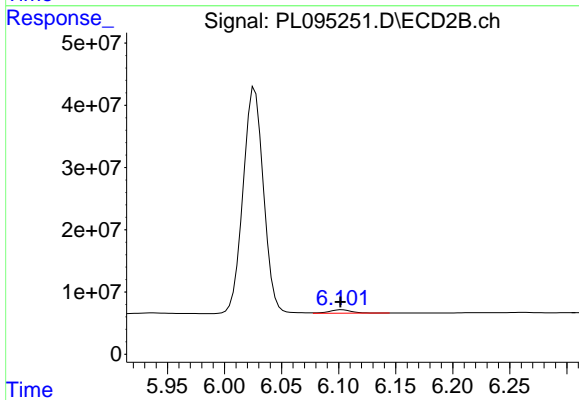
#18 Endrin aldehyde

R.T.: 6.922 min
 Delta R.T.: 0.000 min
 Response: 3659464
 Conc: 1.66 ng/ml

Instrument :
 ECD_L
 ClientSampleId :
 PEM

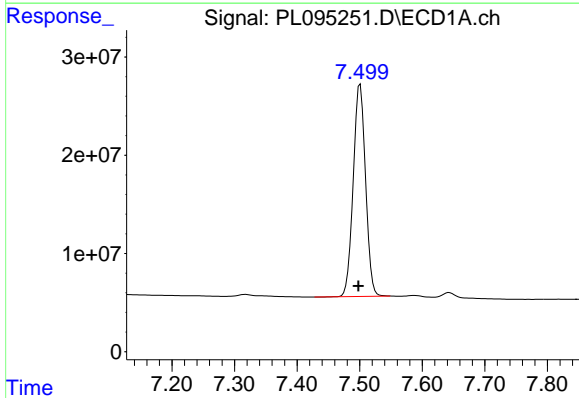
Manual Integrations
 APPROVED

Reviewed By :Abdul Mirza 04/16/2025
 Supervised By :mohammad ahmed 04/16/2025



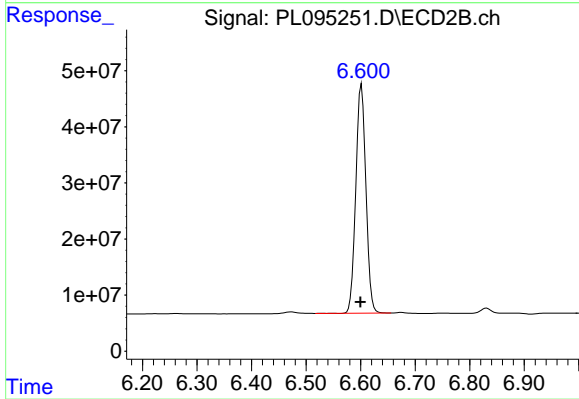
#18 Endrin aldehyde

R.T.: 6.103 min
 Delta R.T.: 0.001 min
 Response: 7316387
 Conc: 2.17 ng/ml



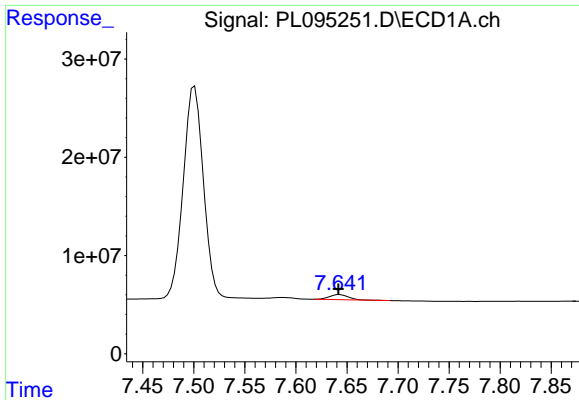
#20 Methoxychlor

R.T.: 7.501 min
 Delta R.T.: 0.003 min
 Response: 296541679
 Conc: 221.39 ng/ml



#20 Methoxychlor

R.T.: 6.602 min
 Delta R.T.: 0.002 min
 Response: 526239516
 Conc: 234.33 ng/ml



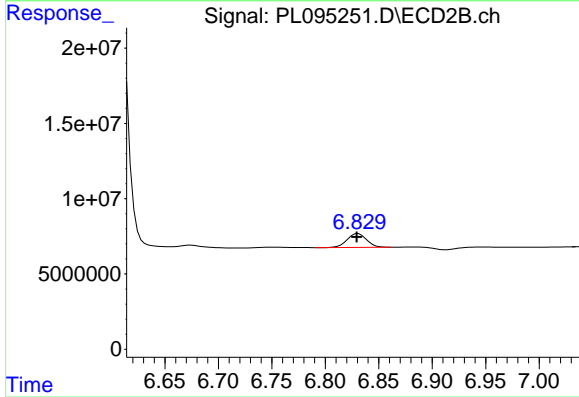
#21 Endrin ketone

R.T.: 7.643 min
 Delta R.T.: 0.001 min
 Response: 6762427
 Conc: 2.34 ng/ml

Instrument :
 ECD_L
 ClientSampleId :
 PEM

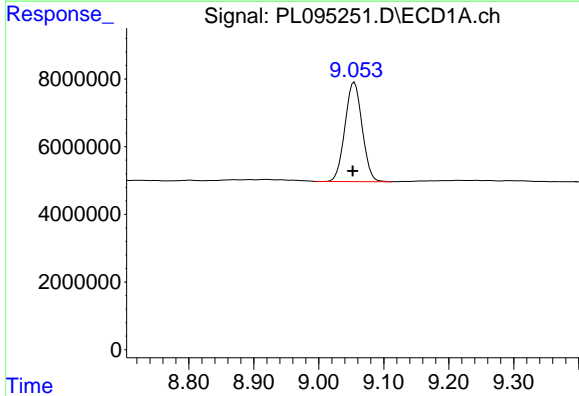
Manual Integrations
 APPROVED

Reviewed By :Abdul Mirza 04/16/2025
 Supervised By :mohammad ahmed 04/16/2025



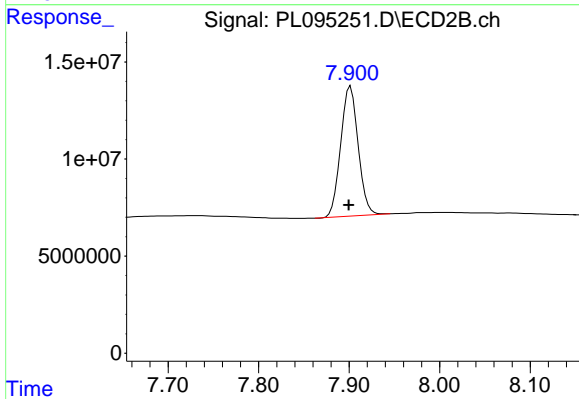
#21 Endrin ketone

R.T.: 6.831 min
 Delta R.T.: 0.002 min
 Response: 11570508
 Conc: 2.29 ng/ml



#28 Decachlorobiphenyl

R.T.: 9.055 min
 Delta R.T.: 0.002 min
 Response: 53914911
 Conc: 22.39 ng/ml



#28 Decachlorobiphenyl

R.T.: 7.902 min
 Delta R.T.: 0.002 min
 Response: 89567032
 Conc: 20.36 ng/ml