

Data Path : Z:\pestpcbsrv\HPCHEM1\ECD_L\Data\PL041525\
 Data File : PL095252.D
 Signal(s) : Signal #1: ECD1A.ch Signal #2: ECD2B.ch
 Acq On : 15 Apr 2025 19:05
 Operator : AR\AJ
 Sample : PSTDCCC050
 Misc :
 ALS Vial : 4 Sample Multiplier: 1

Instrument :

ECD_L

ClientSampleId :

PSTDCCC050

Manual Integrations

APPROVED

Reviewed By :Abdul Mirza 04/16/2025

Supervised By :mohammad ahmed 04/16/2025

Integration File signal 1: autoint1.e
 Integration File signal 2: autoint2.e
 Quant Time: Apr 16 01:27:04 2025
 Quant Method : Z:\pestpcbsrv\HPCHEM1\ECD_L\methods\PL041425.M
 Quant Title : GC Extractables
 QLast Update : Mon Apr 14 19:12:49 2025
 Response via : Initial Calibration
 Integrator: ChemStation

Volume Inj. : 1 µl
 Signal #1 Phase : ZB-MR1 Signal #2 Phase: ZB-MR2
 Signal #1 Info : 30M x 0.32mm x0.5 Signal #2 Info : 30M x 0.32mm x0.25µm

Compound	RT#1	RT#2	Resp#1	Resp#2	ng/ml	ng/ml

System Monitoring Compounds						
1) SA Tetrachlo...	3.536	2.768	161.7E6	213.9E6	58.934	57.488
28) SA Decachlor...	9.055	7.901	132.6E6	229.1E6	55.076	52.090
Target Compounds						
2) A alpha-BHC	3.992	3.270	200.0E6	274.1E6	49.771	49.497
3) MA gamma-BHC...	4.325	3.599	191.0E6	254.2E6	49.670	48.297
4) MA Heptachlor	4.913	3.937	178.7E6	252.6E6	48.732	48.579
5) MB Aldrin	5.254	4.216	184.6E6	251.1E6	52.314	51.519
6) B beta-BHC	4.524	3.900	86792306	112.1E6	49.503	48.371
7) B delta-BHC	4.770	4.128	193.4E6	259.2E6	49.366m	50.126
8) B Heptachlo...	5.681	4.719	167.9E6	237.5E6	52.281	51.990
9) A Endosulfan I	6.067	5.088	158.4E6	225.4E6	51.115	51.923
10) B gamma-Chl...	5.938	4.969	174.0E6	252.1E6	52.098	52.344
11) B alpha-Chl...	6.017	5.032	169.2E6	246.0E6	50.970	51.897
12) B 4,4'-DDE	6.191	5.221	162.5E6	250.4E6	49.706	52.004
13) MA Dieldrin	6.343	5.353	167.3E6	252.1E6	50.776	52.511
14) MA Endrin	6.571	5.628	140.5E6	224.1E6	53.927m	53.644
15) B Endosulfa...	6.793	5.923	139.2E6	223.4E6	48.813	50.884
16) A 4,4'-DDD	6.709	5.776	123.5E6	199.9E6	48.650	51.378
17) MA 4,4'-DDT	7.023	6.026	117.4E6	197.3E6	46.102	47.350
18) B Endrin al...	6.924	6.103	104.1E6	163.0E6	47.295	48.361
19) B Endosulfa...	7.158	6.325	123.6E6	211.9E6	48.086	50.735
20) A Methoxychlor	7.500	6.601	58320742	101.6E6	43.541	45.230
21) B Endrin ke...	7.643	6.831	133.2E6	231.2E6	46.143	45.855
22) Mirex	8.116	7.010	101.3E6	182.4E6	47.599	46.380

(f)=RT Delta > 1/2 Window (#)=Amounts differ by > 25% (m)=manual int.

Data Path : Z:\pestpcbsrv\HPCHEM1\ECD_L\Data\PL041525\
 Data File : PL095252.D
 Signal(s) : Signal #1: ECD1A.ch Signal #2: ECD2B.ch
 Acq On : 15 Apr 2025 19:05
 Operator : AR\AJ
 Sample : PSTDCCC050
 Misc :
 ALS Vial : 4 Sample Multiplier: 1

Instrument :

ECD_L

ClientSampleId :

PSTDCCC050

Manual Integrations

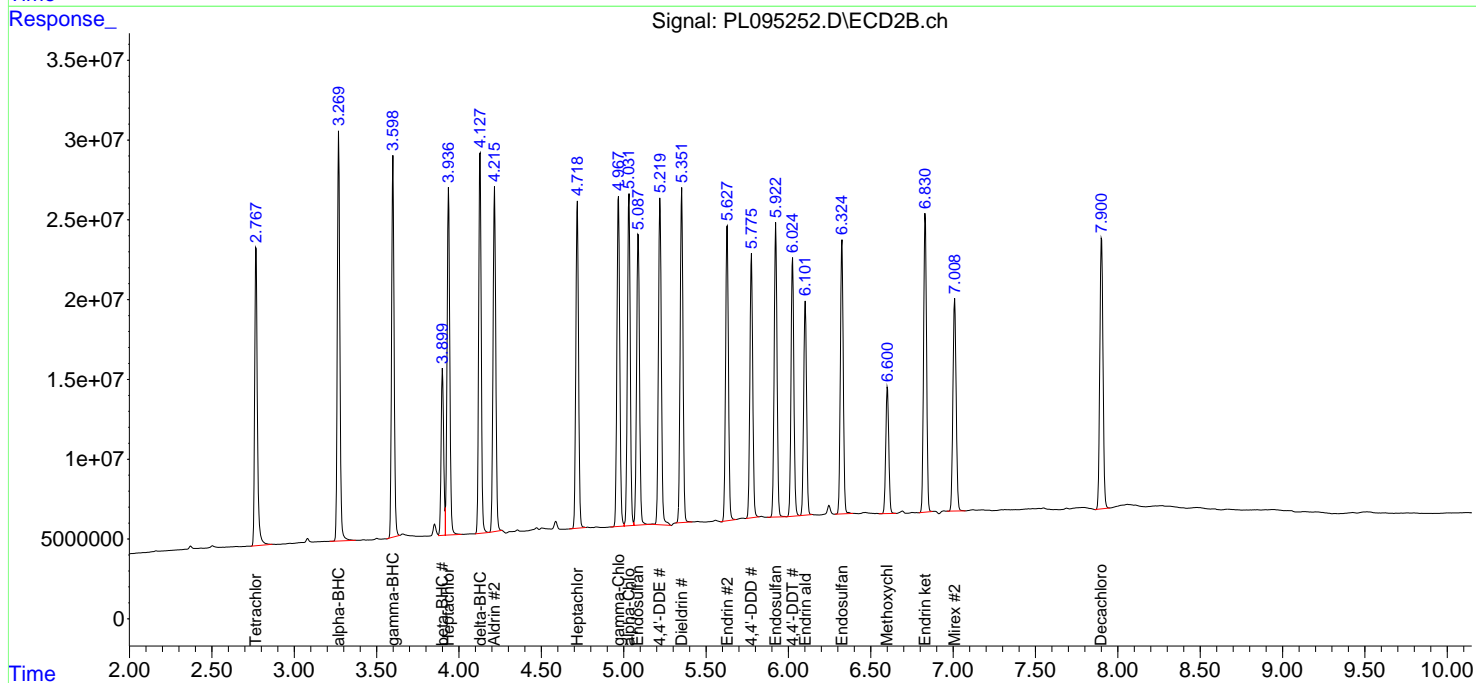
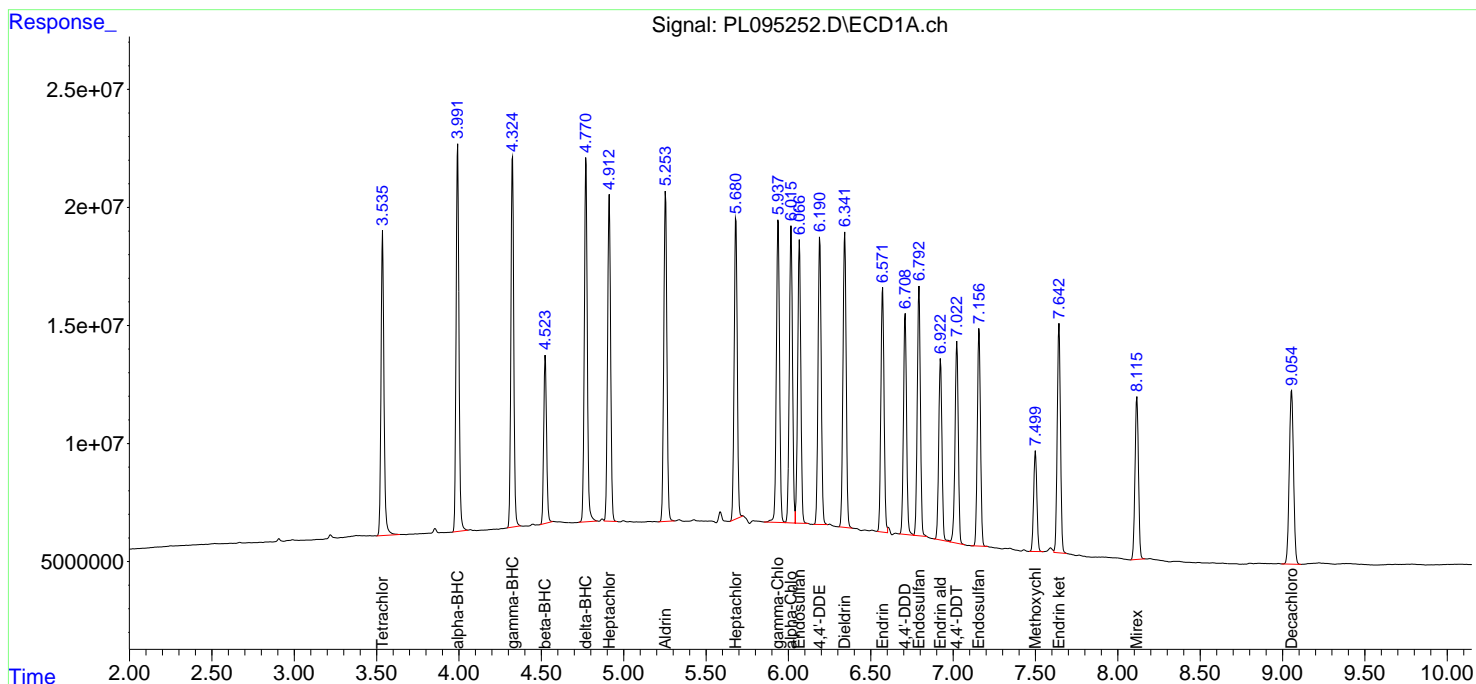
APPROVED

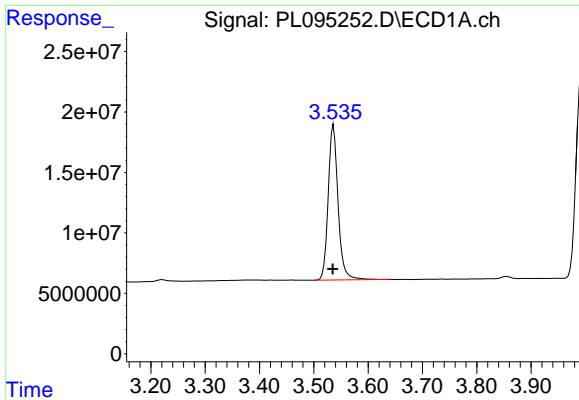
Reviewed By :Abdul Mirza 04/16/2025

Supervised By :mohammad ahmed 04/16/2025

Integration File signal 1: autoint1.e
 Integration File signal 2: autoint2.e
 Quant Time: Apr 16 01:27:04 2025
 Quant Method : Z:\pestpcbsrv\HPCHEM1\ECD_L\methods\PL041425.M
 Quant Title : GC Extractables
 QLast Update : Mon Apr 14 19:12:49 2025
 Response via : Initial Calibration
 Integrator: ChemStation

Volume Inj. : 1 µl
 Signal #1 Phase : ZB-MR1 Signal #2 Phase: ZB-MR2
 Signal #1 Info : 30M x 0.32mm x0.5 Signal #2 Info : 30M x 0.32mm x0.25µm





#1 Tetrachloro-m-xylene

R.T.: 3.536 min
 Delta R.T.: 0.001 min
 Response: 161671570
 Conc: 58.93 ng/ml

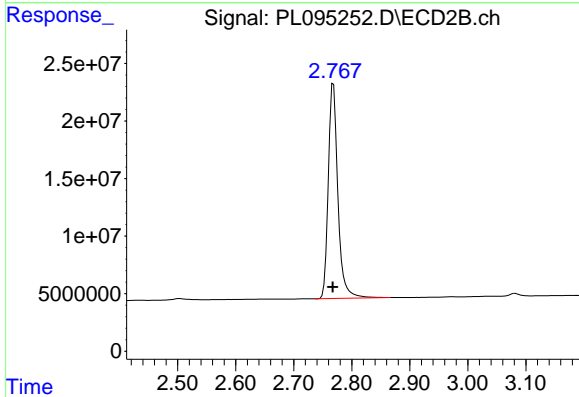
Instrument :

ECD_L

ClientSampleId :
 PSTDCCC050

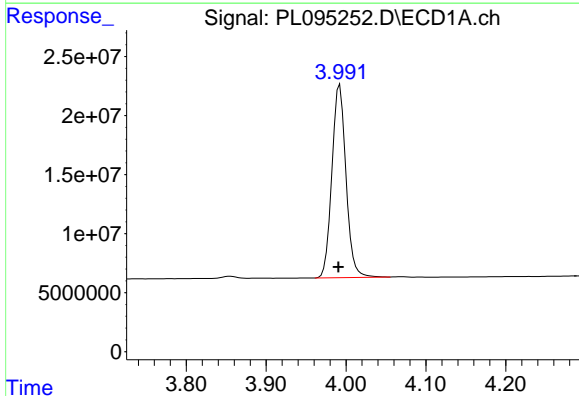
Manual Integrations
 APPROVED

Reviewed By :Abdul Mirza 04/16/2025
 Supervised By :mohammad ahmed 04/16/2025



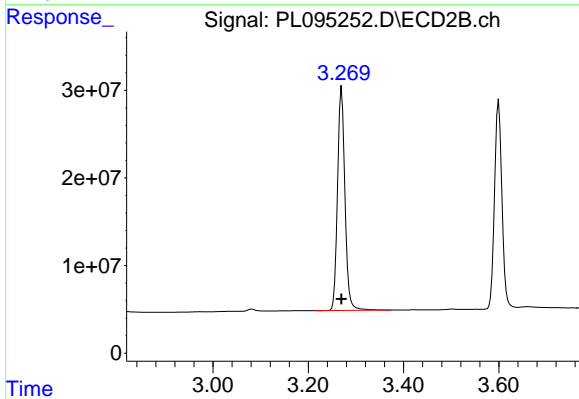
#1 Tetrachloro-m-xylene

R.T.: 2.768 min
 Delta R.T.: 0.000 min
 Response: 213925575
 Conc: 57.49 ng/ml



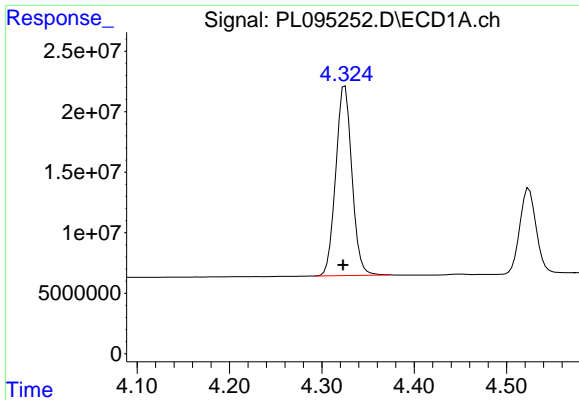
#2 alpha-BHC

R.T.: 3.992 min
 Delta R.T.: 0.002 min
 Response: 200035664
 Conc: 49.77 ng/ml



#2 alpha-BHC

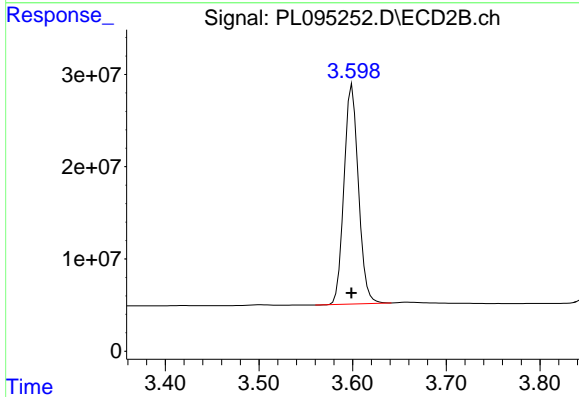
R.T.: 3.270 min
 Delta R.T.: 0.000 min
 Response: 274088898
 Conc: 49.50 ng/ml



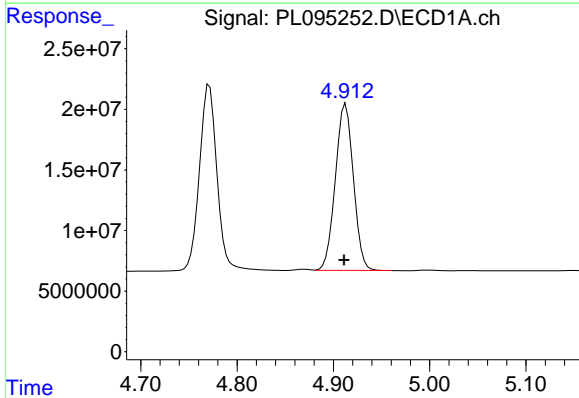
#3 gamma-BHC (Lindane)
 R.T.: 4.325 min
 Delta R.T.: 0.002 min
 Response: 191009725
 Conc: 49.67 ng/ml

Instrument : ECD_L
 ClientSampleId : PSTDCCC050

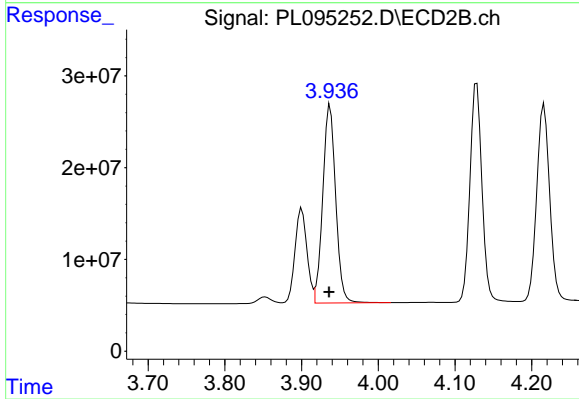
Manual Integrations
APPROVED
 Reviewed By :Abdul Mirza 04/16/2025
 Supervised By :mohammad ahmed 04/16/2025



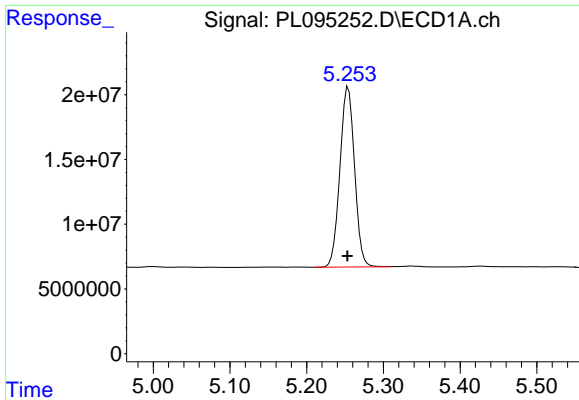
#3 gamma-BHC (Lindane)
 R.T.: 3.599 min
 Delta R.T.: 0.000 min
 Response: 254195735
 Conc: 48.30 ng/ml



#4 Heptachlor
 R.T.: 4.913 min
 Delta R.T.: 0.002 min
 Response: 178670723
 Conc: 48.73 ng/ml



#4 Heptachlor
 R.T.: 3.937 min
 Delta R.T.: 0.001 min
 Response: 252586510
 Conc: 48.58 ng/ml



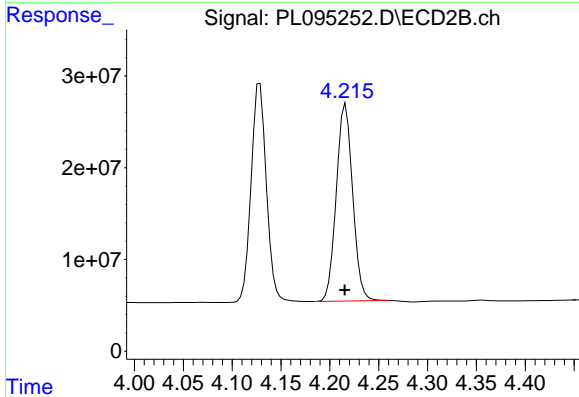
#5 Aldrin

R.T.: 5.254 min
 Delta R.T.: 0.001 min
 Response: 184624300
 Conc: 52.31 ng/ml

Instrument :
 ECD_L
 ClientSampleId :
 PSTDCCC050

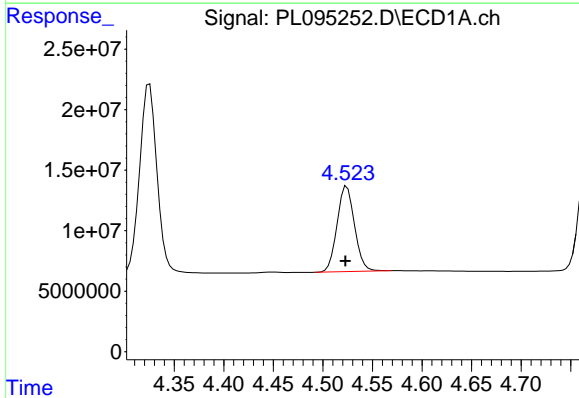
Manual Integrations
 APPROVED

Reviewed By :Abdul Mirza 04/16/2025
 Supervised By :mohammad ahmed 04/16/2025



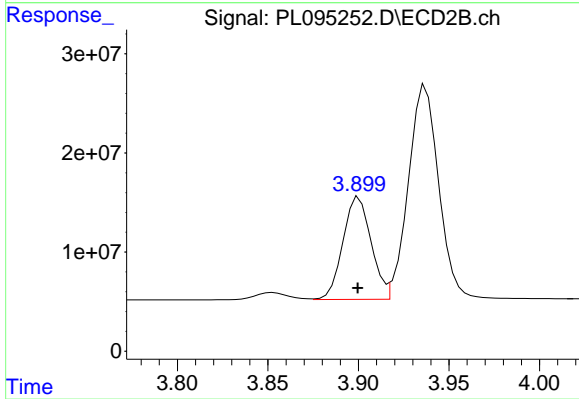
#5 Aldrin

R.T.: 4.216 min
 Delta R.T.: 0.000 min
 Response: 251082124
 Conc: 51.52 ng/ml



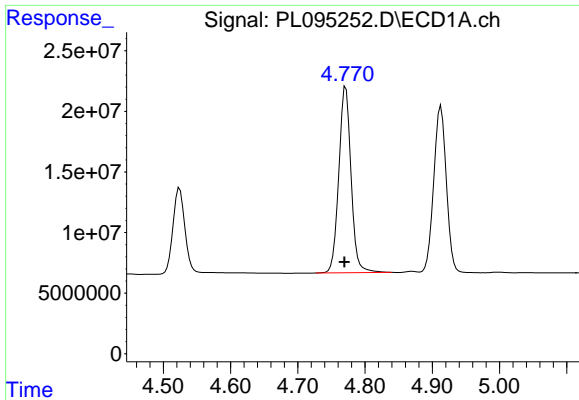
#6 beta-BHC

R.T.: 4.524 min
 Delta R.T.: 0.001 min
 Response: 86792306
 Conc: 49.50 ng/ml



#6 beta-BHC

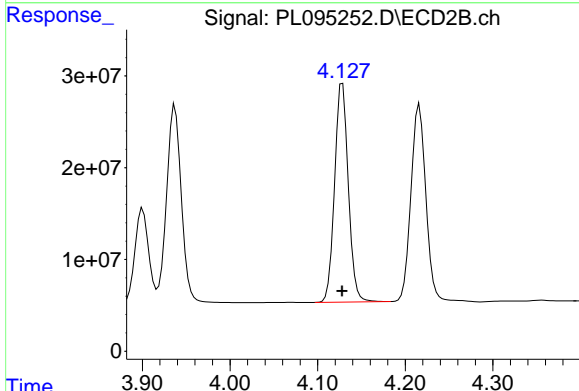
R.T.: 3.900 min
 Delta R.T.: 0.000 min
 Response: 112083234
 Conc: 48.37 ng/ml



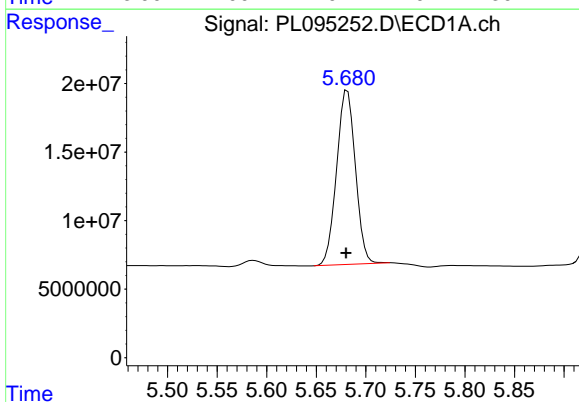
#7 delta-BHC
 R.T.: 4.770 min
 Delta R.T.: 0.000 min
 Response: 193446510
 Conc: 49.37 ng/ml

Instrument : ECD_L
 ClientSampleId : PSTDCCC050

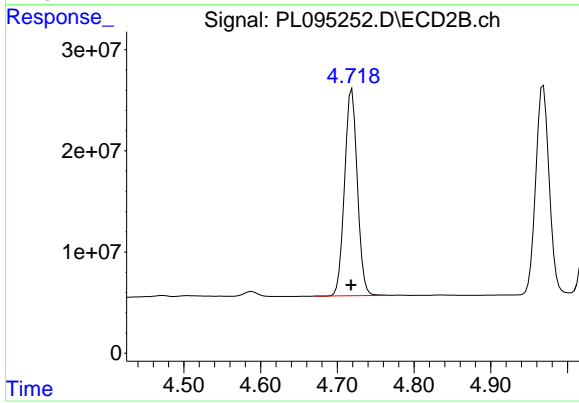
Manual Integrations
APPROVED
 Reviewed By :Abdul Mirza 04/16/2025
 Supervised By :mohammad ahmed 04/16/2025



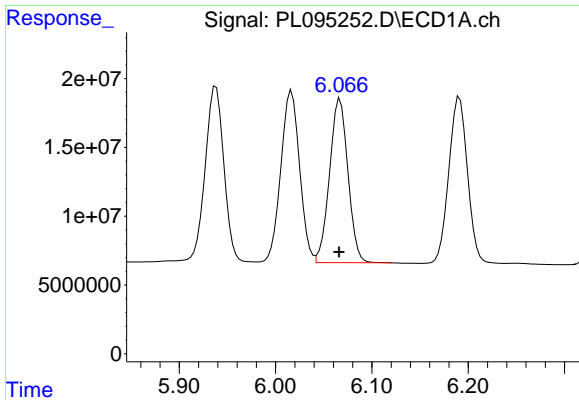
#7 delta-BHC
 R.T.: 4.128 min
 Delta R.T.: 0.000 min
 Response: 259154172
 Conc: 50.13 ng/ml



#8 Heptachlor epoxide
 R.T.: 5.681 min
 Delta R.T.: 0.001 min
 Response: 167862788
 Conc: 52.28 ng/ml



#8 Heptachlor epoxide
 R.T.: 4.719 min
 Delta R.T.: 0.000 min
 Response: 237525067
 Conc: 51.99 ng/ml



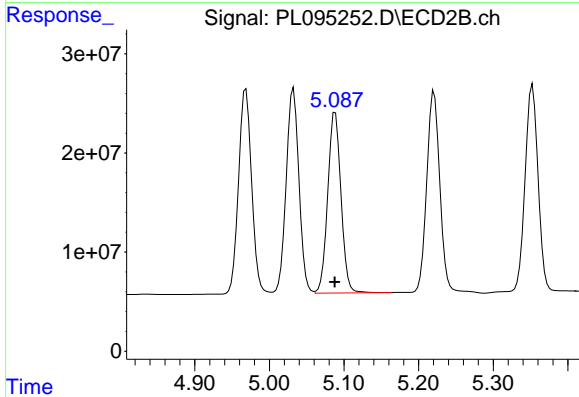
#9 Endosulfan I

R.T.: 6.067 min
 Delta R.T.: 0.001 min
 Response: 158376499
 Conc: 51.12 ng/ml

Instrument :
 ECD_L
 ClientSampleId :
 PSTDCCC050

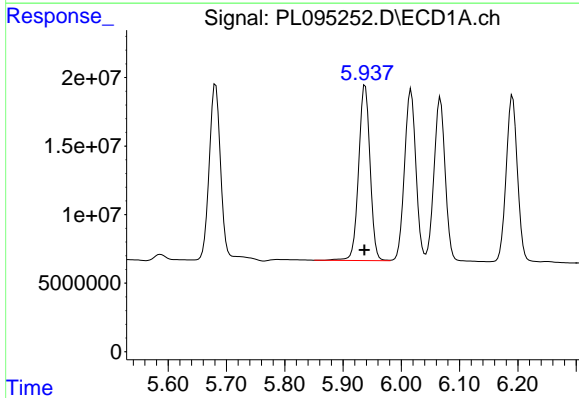
Manual Integrations
 APPROVED

Reviewed By :Abdul Mirza 04/16/2025
 Supervised By :mohammad ahmed 04/16/2025



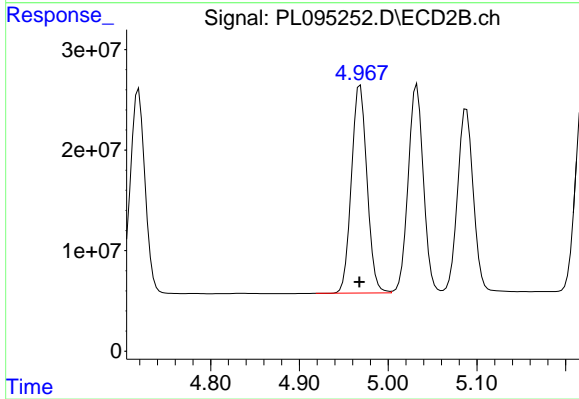
#9 Endosulfan I

R.T.: 5.088 min
 Delta R.T.: 0.000 min
 Response: 225391246
 Conc: 51.92 ng/ml



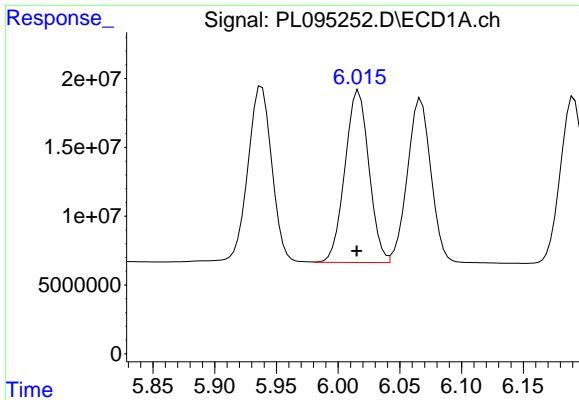
#10 gamma-Chlordane

R.T.: 5.938 min
 Delta R.T.: 0.001 min
 Response: 174033674
 Conc: 52.10 ng/ml



#10 gamma-Chlordane

R.T.: 4.969 min
 Delta R.T.: 0.001 min
 Response: 252127239
 Conc: 52.34 ng/ml

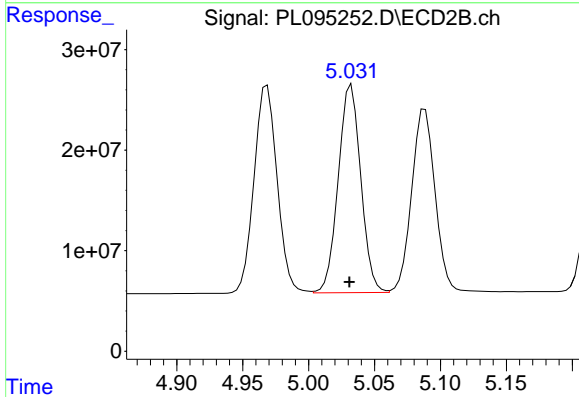


#11 alpha-Chlordane
 R.T.: 6.017 min
 Delta R.T.: 0.002 min
 Response: 169194508
 Conc: 50.97 ng/ml

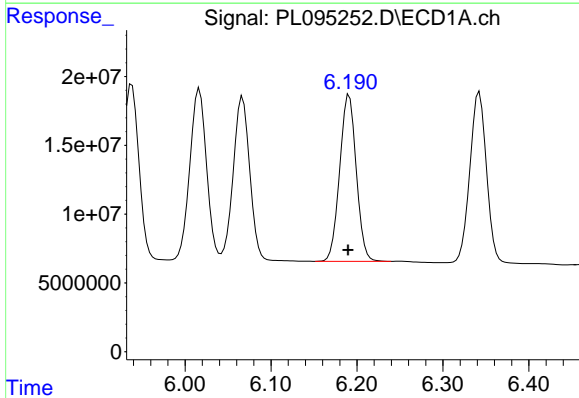
Instrument :
 ECD_L
 ClientSampleId :
 PSTDCCC050

Manual Integrations
 APPROVED

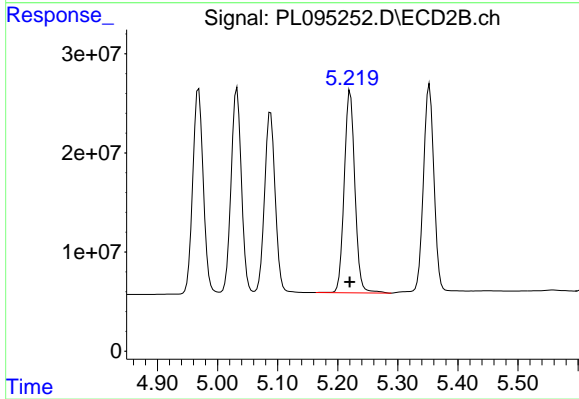
Reviewed By :Abdul Mirza 04/16/2025
 Supervised By :mohammad ahmed 04/16/2025



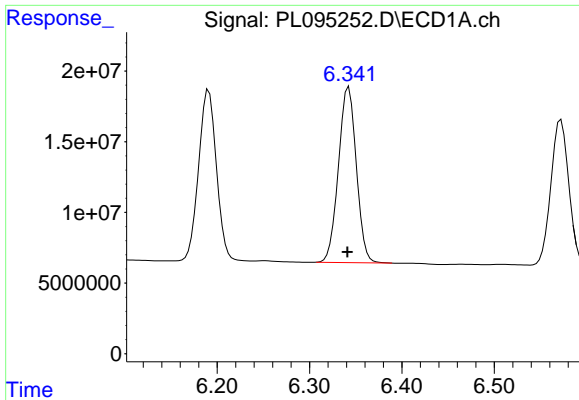
#11 alpha-Chlordane
 R.T.: 5.032 min
 Delta R.T.: 0.001 min
 Response: 245973530
 Conc: 51.90 ng/ml



#12 4,4'-DDE
 R.T.: 6.191 min
 Delta R.T.: 0.001 min
 Response: 162532049
 Conc: 49.71 ng/ml



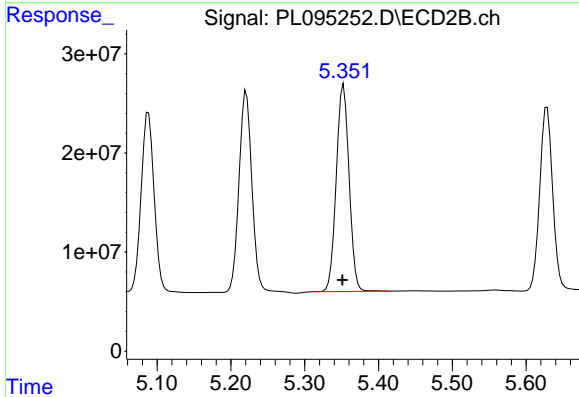
#12 4,4'-DDE
 R.T.: 5.221 min
 Delta R.T.: 0.000 min
 Response: 250386005
 Conc: 52.00 ng/ml



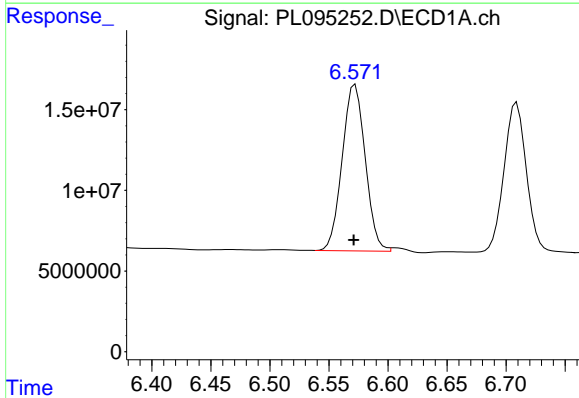
#13 Dieldrin
 R.T.: 6.343 min
 Delta R.T.: 0.002 min
 Response: 167312659
 Conc: 50.78 ng/ml

Instrument : ECD_L
 Client Sample Id : PSTDCCC050

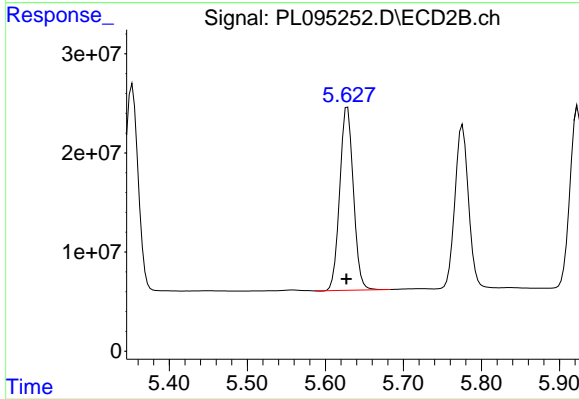
Manual Integrations
APPROVED
 Reviewed By :Abdul Mirza 04/16/2025
 Supervised By :mohammad ahmed 04/16/2025



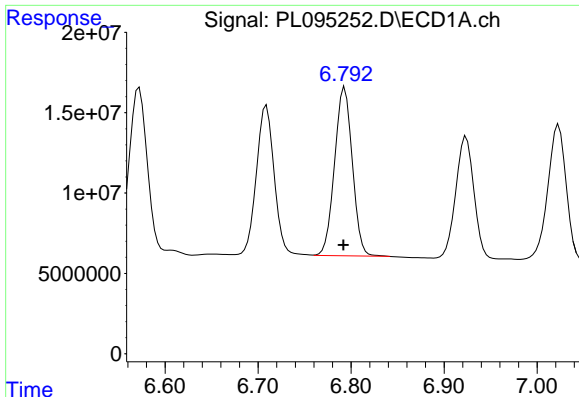
#13 Dieldrin
 R.T.: 5.353 min
 Delta R.T.: 0.001 min
 Response: 252055809
 Conc: 52.51 ng/ml



#14 Endrin
 R.T.: 6.571 min
 Delta R.T.: 0.000 min
 Response: 140541600
 Conc: 53.93 ng/ml m



#14 Endrin
 R.T.: 5.628 min
 Delta R.T.: 0.001 min
 Response: 224092281
 Conc: 53.64 ng/ml



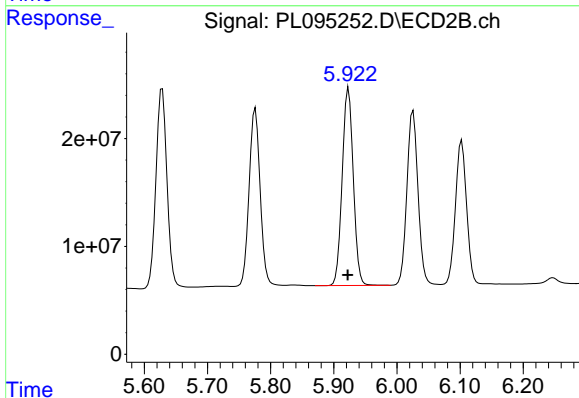
#15 Endosulfan II

R.T.: 6.793 min
 Delta R.T.: 0.001 min
 Response: 139230429
 Conc: 48.81 ng/ml

Instrument :
 ECD_L
 ClientSampleId :
 PSTDCCC050

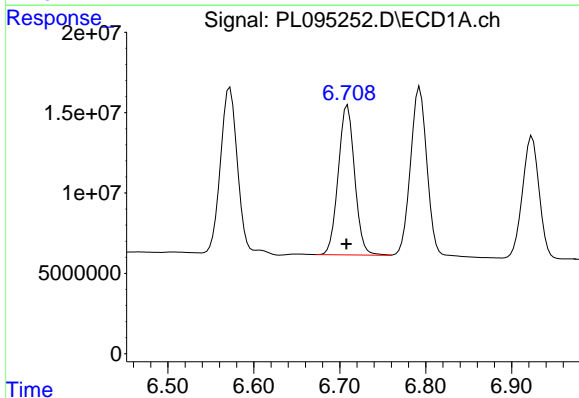
Manual Integrations
 APPROVED

Reviewed By :Abdul Mirza 04/16/2025
 Supervised By :mohammad ahmed 04/16/2025



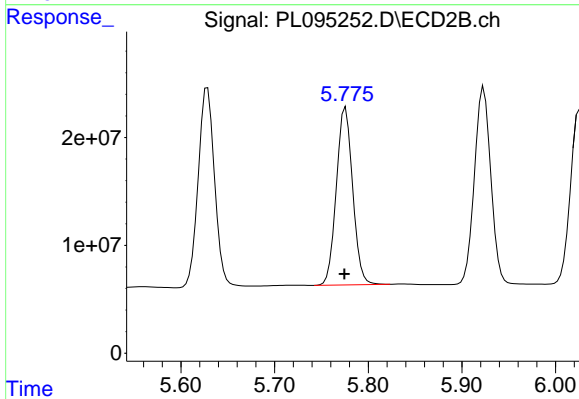
#15 Endosulfan II

R.T.: 5.923 min
 Delta R.T.: 0.001 min
 Response: 223399197
 Conc: 50.88 ng/ml



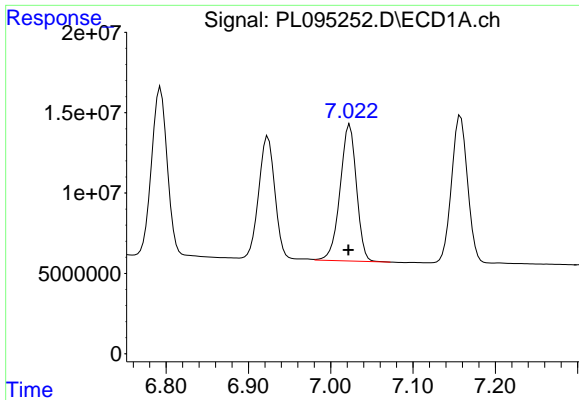
#16 4,4'-DDD

R.T.: 6.709 min
 Delta R.T.: 0.001 min
 Response: 123526598
 Conc: 48.65 ng/ml



#16 4,4'-DDD

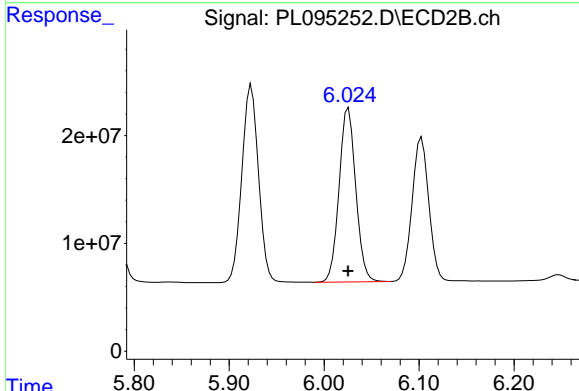
R.T.: 5.776 min
 Delta R.T.: 0.001 min
 Response: 199855440
 Conc: 51.38 ng/ml



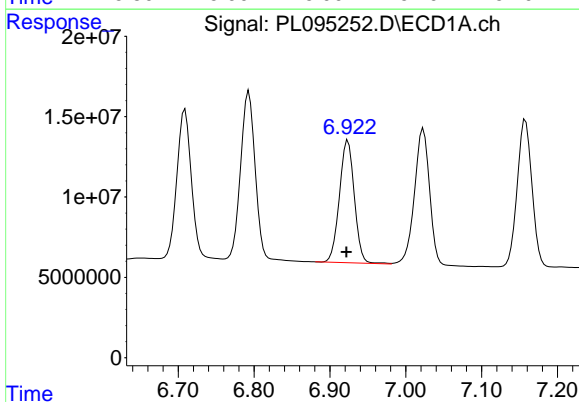
#17 4,4'-DDT
 R.T.: 7.023 min
 Delta R.T.: 0.002 min
 Response: 117355054
 Conc: 46.10 ng/ml

Instrument : ECD_L
 Client Sample Id : PSTDCCC050

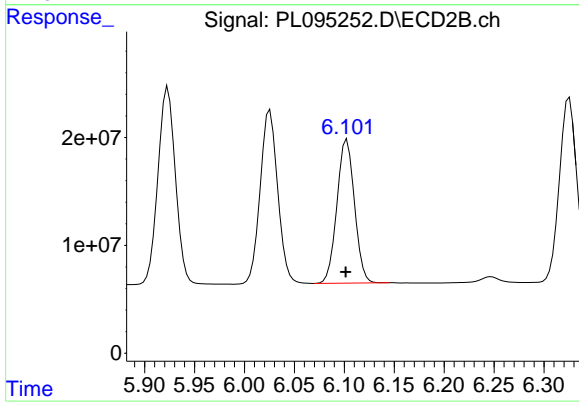
Manual Integrations
APPROVED
 Reviewed By :Abdul Mirza 04/16/2025
 Supervised By :mohammad ahmed 04/16/2025



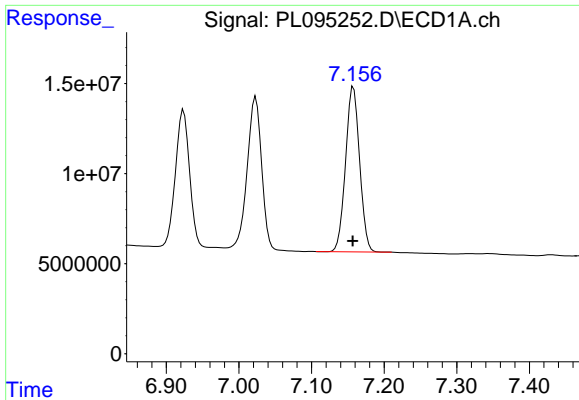
#17 4,4'-DDT
 R.T.: 6.026 min
 Delta R.T.: 0.000 min
 Response: 197256742
 Conc: 47.35 ng/ml



#18 Endrin aldehyde
 R.T.: 6.924 min
 Delta R.T.: 0.002 min
 Response: 104100327
 Conc: 47.30 ng/ml



#18 Endrin aldehyde
 R.T.: 6.103 min
 Delta R.T.: 0.001 min
 Response: 162966807
 Conc: 48.36 ng/ml



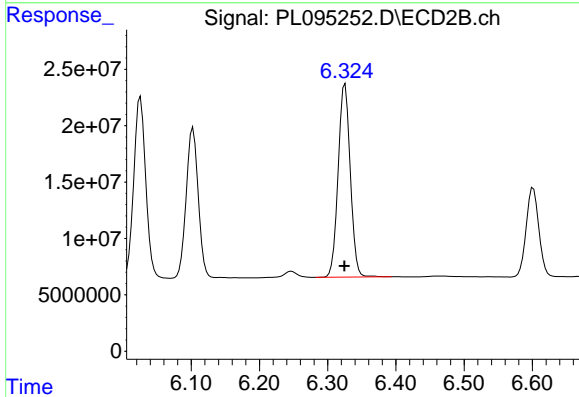
#19 Endosulfan Sulfate

R.T.: 7.158 min
 Delta R.T.: 0.000 min
 Response: 123561739
 Conc: 48.09 ng/ml

Instrument :
 ECD_L
 ClientSampleId :
 PSTDCCC050

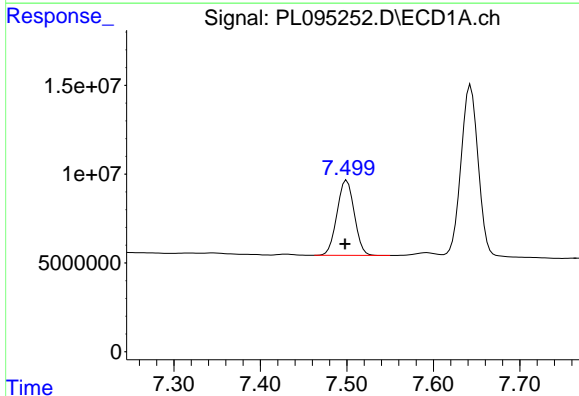
Manual Integrations
 APPROVED

Reviewed By :Abdul Mirza 04/16/2025
 Supervised By :mohammad ahmed 04/16/2025



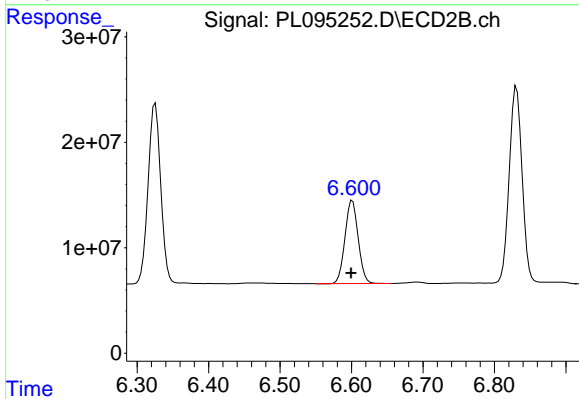
#19 Endosulfan Sulfate

R.T.: 6.325 min
 Delta R.T.: 0.001 min
 Response: 211890914
 Conc: 50.73 ng/ml



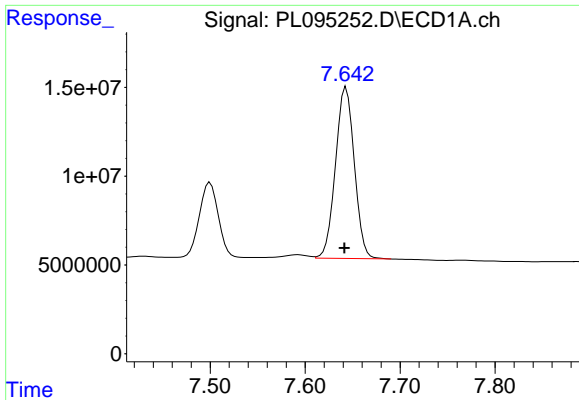
#20 Methoxychlor

R.T.: 7.500 min
 Delta R.T.: 0.002 min
 Response: 58320742
 Conc: 43.54 ng/ml



#20 Methoxychlor

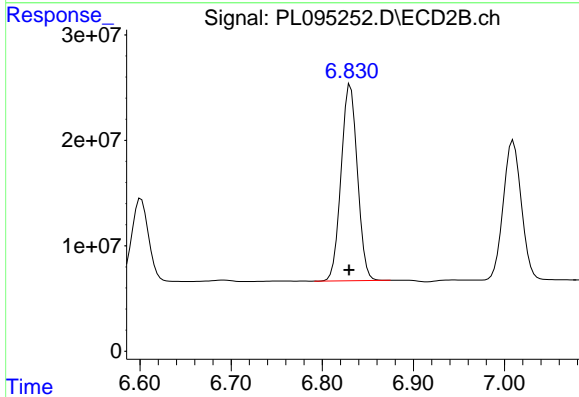
R.T.: 6.601 min
 Delta R.T.: 0.002 min
 Response: 101572650
 Conc: 45.23 ng/ml



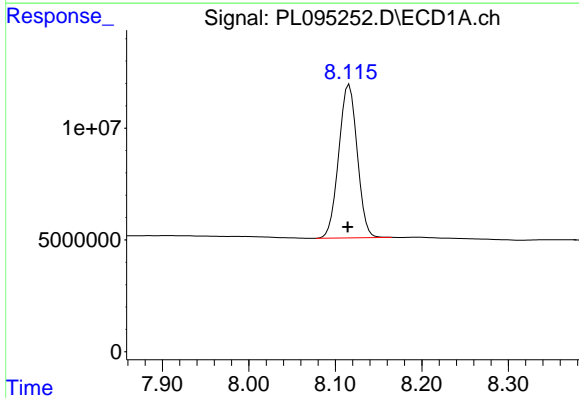
#21 Endrin ketone
 R.T.: 7.643 min
 Delta R.T.: 0.002 min
 Response: 133199230
 Conc: 46.14 ng/ml

Instrument : ECD_L
 ClientSampleId : PSTDCCC050

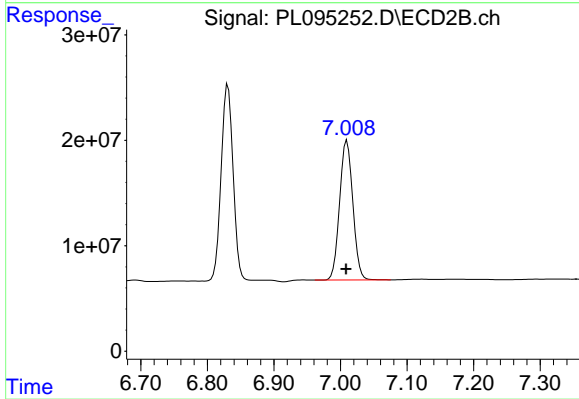
Manual Integrations
APPROVED
 Reviewed By :Abdul Mirza 04/16/2025
 Supervised By :mohammad ahmed 04/16/2025



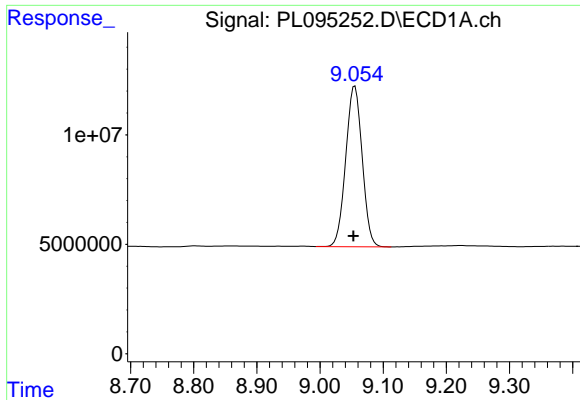
#21 Endrin ketone
 R.T.: 6.831 min
 Delta R.T.: 0.002 min
 Response: 231206813
 Conc: 45.86 ng/ml



#22 Mirex
 R.T.: 8.116 min
 Delta R.T.: 0.002 min
 Response: 101253442
 Conc: 47.60 ng/ml



#22 Mirex
 R.T.: 7.010 min
 Delta R.T.: 0.001 min
 Response: 182357546
 Conc: 46.38 ng/ml



#28 Decachlorobiphenyl

R.T.: 9.055 min
Delta R.T.: 0.003 min
Response: 132607501
Conc: 55.08 ng/ml

Instrument :

ECD_L

ClientSampleId :

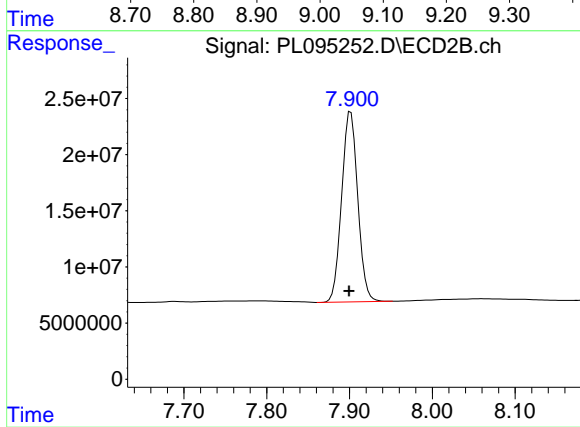
PSTDCCC050

Manual Integrations

APPROVED

Reviewed By :Abdul Mirza 04/16/2025

Supervised By :mohammad ahmed 04/16/2025



#28 Decachlorobiphenyl

R.T.: 7.901 min
Delta R.T.: 0.002 min
Response: 229146396
Conc: 52.09 ng/ml