

Data Path : Z:\pestpcbsrv\HPCHEM1\ECD_L\Data\PL041922\
 Data File : PL074191.D
 Signal(s) : Signal #1: ECD1A.ch Signal #2: ECD2B.ch
 Acq On : 19 Apr 2022 18:23
 Operator : AR\AJ
 Sample : N2452-02
 Misc :
 ALS Vial : 20 Sample Multiplier: 1

Instrument :
 ECD_L
 ClientSampleId :

Integration File signal 1: autoint1.e
 Integration File signal 2: autoint2.e
 Quant Time: Apr 20 00:44:57 2022
 Quant Method : Z:\pestpcbsrv\HPCHEM1\ECD_L\methods\PL040822.M
 Quant Title : GC Extractables
 QLast Update : Thu Apr 14 09:29:23 2022
 Response via : Initial Calibration
 Integrator: ChemStation

Volume Inj. : 1 µl
 Signal #1 Phase : ZB-MR2 Signal #2 Phase: ZB-MR1
 Signal #1 Info : 30M x 0.32mm x0.2 Signal #2 Info : 30M x 0.32mm x0.5µm

	Compound	RT#1	RT#2	Resp#1	Resp#2	ng/ml	ng/ml

System Monitoring Compounds							
1)	SA Tetrachlo...	4.637	5.491	6120230	34059401	18.942	19.103
28)	SA Decachlor...	10.410	11.336	7833854	28571234	15.064	16.176
Target Compounds							
2)	A alpha-BHC	5.364f	0.000	50329	0	0.120	N.D. #
3)	MA gamma-BHC...	5.789f	6.460f	110201	78000	0.263	0.033 #
4)	MA Heptachlor	0.000	7.103	0	52828	N.D.	0.020 #
5)	MB Aldrin	6.500	7.475	60733	314644	0.146	0.134
7)	B delta-BHC	6.436f	6.960	78275	3558073	0.189	1.457 #
9)	A Endosulfan I	0.000	8.308f	0	699007	N.D.	0.355 #
10)	B gamma-Chl...	7.369	0.000	227104	0	0.518	N.D. #
11)	B alpha-Chl...	7.436	8.279	75150	547203	0.170	0.254 #
14)	MA Endrin	0.000	8.847	0	184306	N.D.	0.109 #
15)	B Endosulfa...	0.000	9.058	0	637280	N.D.	0.367 #
16)	A 4,4'-DDD	8.218	9.002	77860	149772	0.241	0.097 #
17)	MA 4,4'-DDT	8.482	9.302	52984	725256	0.143	0.409 #
18)	B Endrin al...	8.576	9.220f	10790	419286	0.033	0.325 #
19)	B Endosulfa...	8.791	0.000	114123	0	0.267	N.D. #
20)	A Methoxychlor	9.089	9.791	52612	178811	0.212	0.186
21)	B Endrin ke...	0.000	9.941	0	35595	N.D.	0.021 #
22)	Mirex	9.489	10.401	40420	167815	0.087	0.122 #
23)	Chlordane-1	0.000	6.857	0	541142	N.D.	6.781 #
24)	Chlordane-2	6.648	7.424f	151864	796416	8.715	9.638
25)	Chlordane-3	7.369	0.000	227104	0	5.250	N.D. #
26)	Chlordane-4	7.436	8.279	75150	547203	1.619	1.380

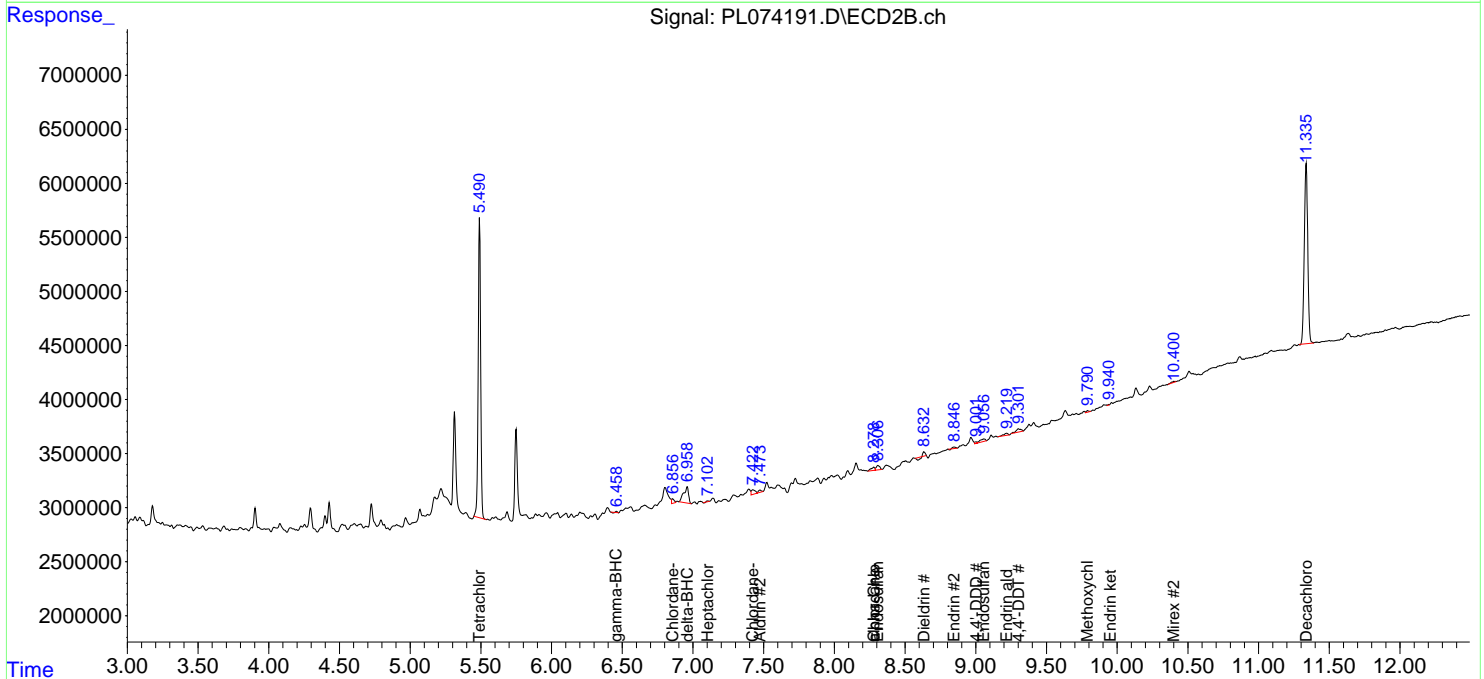
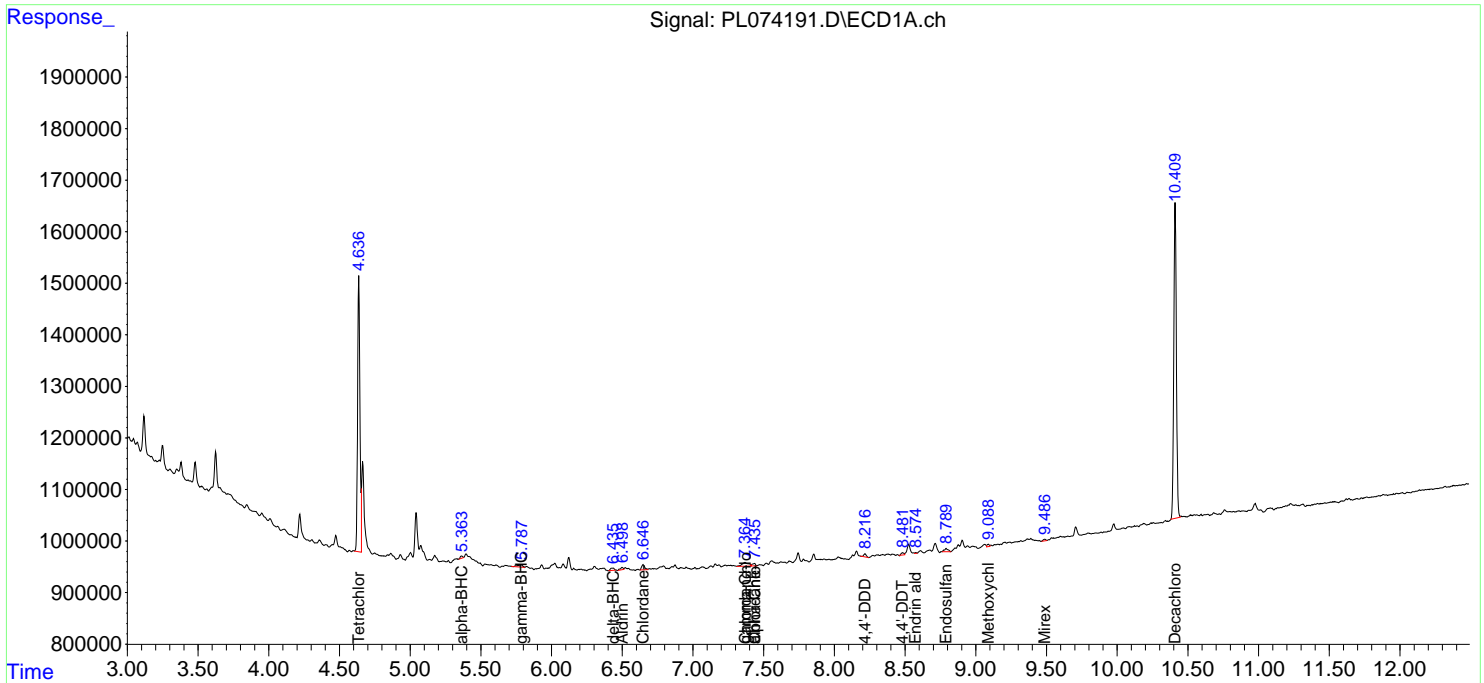
(f)=RT Delta > 1/2 Window (#)=Amounts differ by > 25% (m)=manual int.

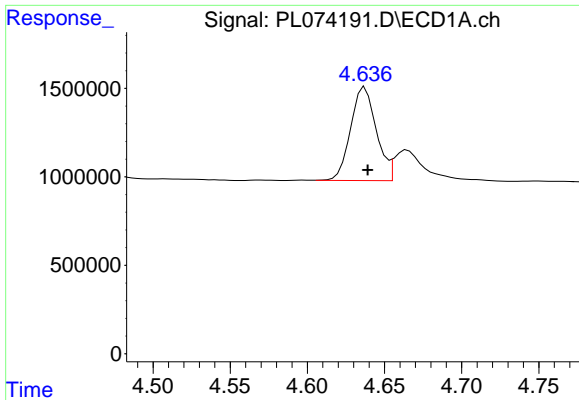
Data Path : Z:\pestpcbsrv\HPCHEM1\ECD_L\Data\PL041922\
 Data File : PL074191.D
 Signal(s) : Signal #1: ECD1A.ch Signal #2: ECD2B.ch
 Acq On : 19 Apr 2022 18:23
 Operator : AR\AJ
 Sample : N2452-02
 Misc :
 ALS Vial : 20 Sample Multiplier: 1

Instrument :
 ECD_L
 ClientSampleId :

Integration File signal 1: autoint1.e
 Integration File signal 2: autoint2.e
 Quant Time: Apr 20 00:44:57 2022
 Quant Method : Z:\pestpcbsrv\HPCHEM1\ECD_L\methods\PL040822.M
 Quant Title : GC Extractables
 QLast Update : Thu Apr 14 09:29:23 2022
 Response via : Initial Calibration
 Integrator: ChemStation

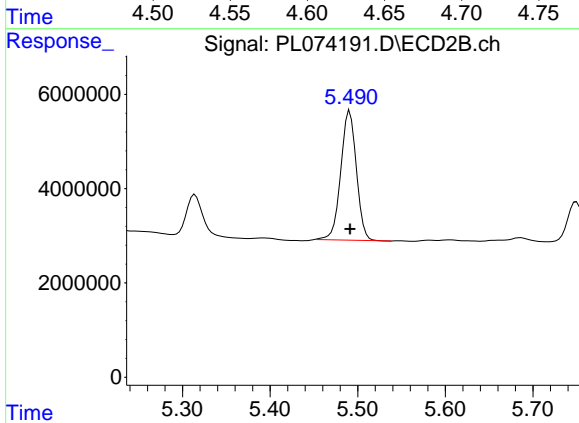
Volume Inj. : 1 µl
 Signal #1 Phase : ZB-MR2 Signal #2 Phase: ZB-MR1
 Signal #1 Info : 30M x 0.32mm x0.2 Signal #2 Info : 30M x 0.32mm x0.5µm



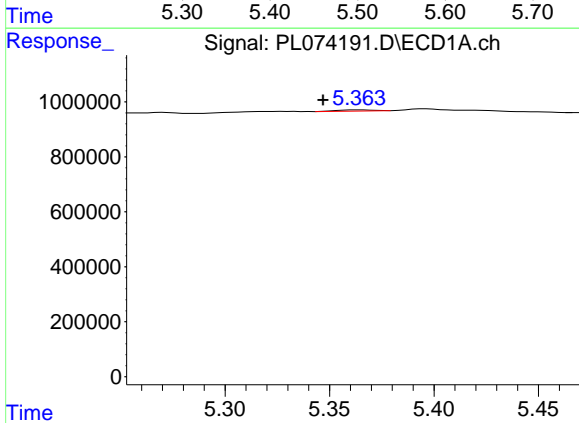


#1 Tetrachloro-m-xylene
 R.T.: 4.637 min
 Delta R.T.: -0.002 min
 Response: 6120230
 Conc: 18.94 ng/ml

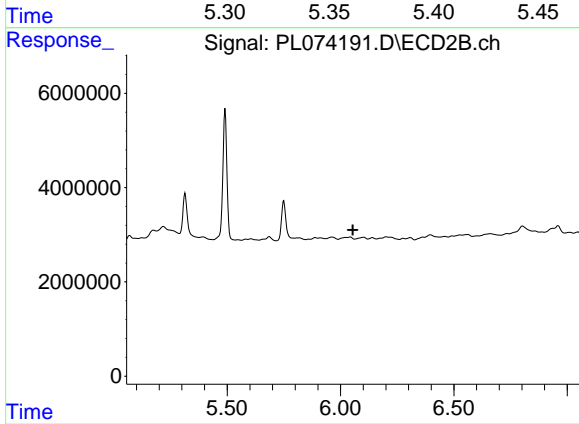
Instrument :
 ECD_L
 ClientSampleId :



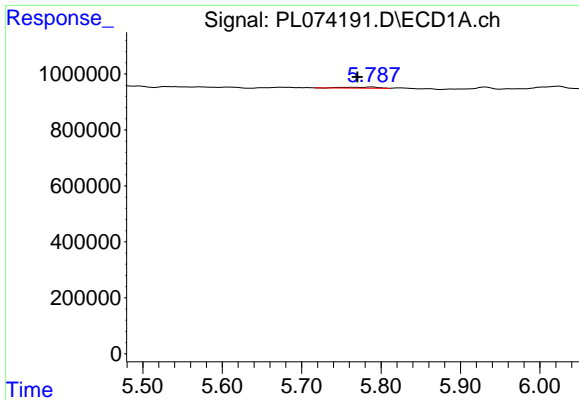
#1 Tetrachloro-m-xylene
 R.T.: 5.491 min
 Delta R.T.: 0.000 min
 Response: 34059401
 Conc: 19.10 ng/ml



#2 alpha-BHC
 R.T.: 5.364 min
 Delta R.T.: 0.018 min
 Response: 50329
 Conc: 0.12 ng/ml

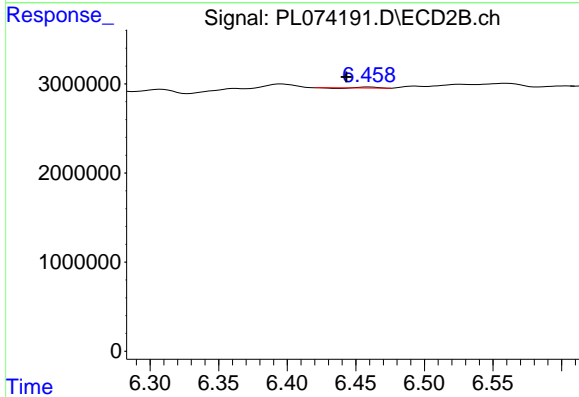


#2 alpha-BHC
 R.T.: 0.000 min
 Exp R.T. : 6.054 min
 Response: 0
 Conc: N.D.

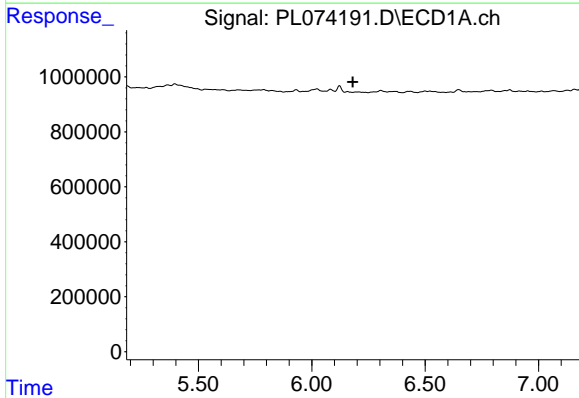


#3 gamma-BHC (Lindane)
 R.T.: 5.789 min
 Delta R.T.: 0.018 min
 Response: 110201
 Conc: 0.26 ng/ml

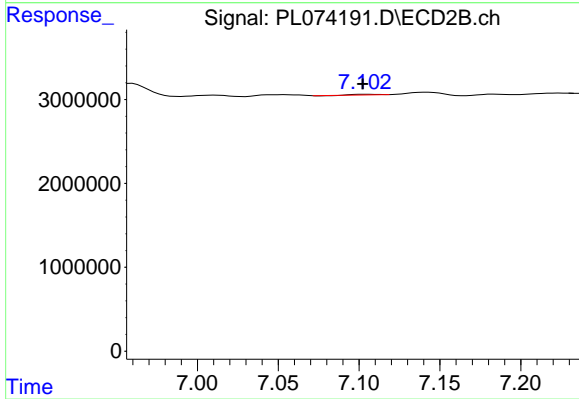
Instrument :
 ECD_L
 ClientSampleId :



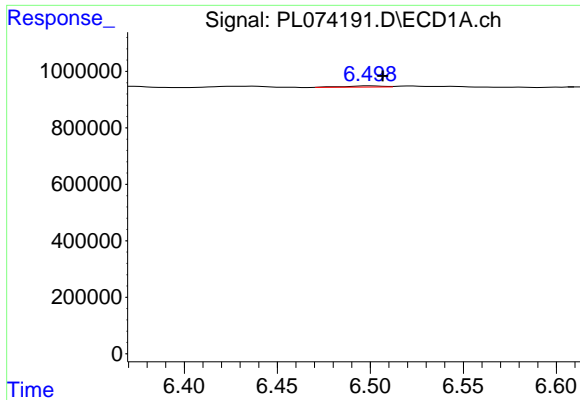
#3 gamma-BHC (Lindane)
 R.T.: 6.460 min
 Delta R.T.: 0.016 min
 Response: 78000
 Conc: 0.03 ng/ml



#4 Heptachlor
 R.T.: 0.000 min
 Exp R.T. : 6.181 min
 Response: 0
 Conc: N.D.

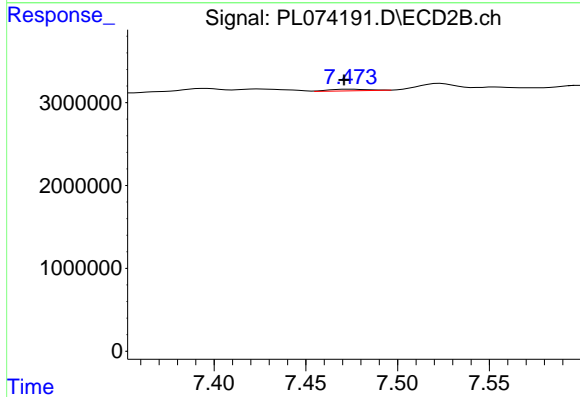


#4 Heptachlor
 R.T.: 7.103 min
 Delta R.T.: 0.001 min
 Response: 52828
 Conc: 0.02 ng/ml

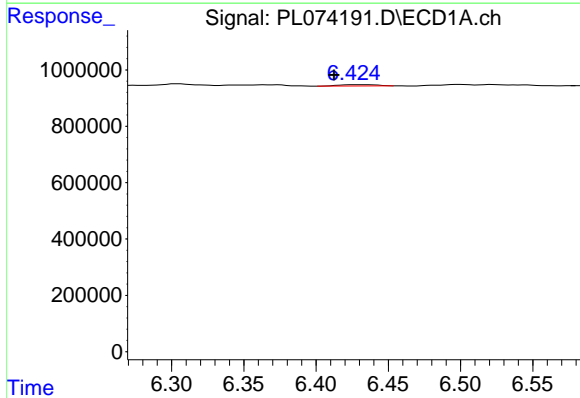


#5 Aldrin
 R.T.: 6.500 min
 Delta R.T.: -0.007 min
 Response: 60733
 Conc: 0.15 ng/ml

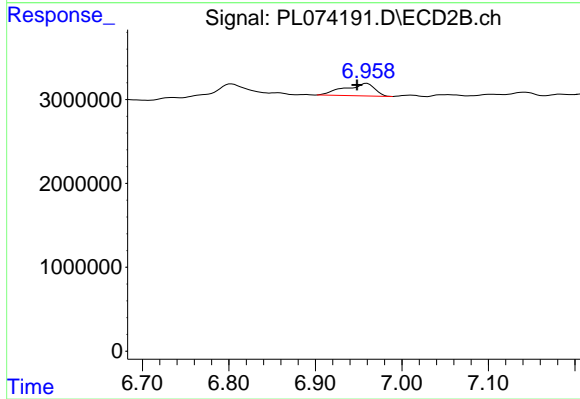
Instrument :
 ECD_L
 ClientSampleId :



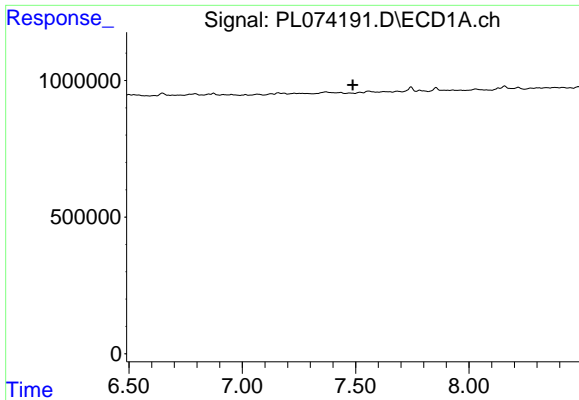
#5 Aldrin
 R.T.: 7.475 min
 Delta R.T.: 0.004 min
 Response: 314644
 Conc: 0.13 ng/ml



#7 delta-BHC
 R.T.: 6.436 min
 Delta R.T.: 0.024 min
 Response: 78275
 Conc: 0.19 ng/ml



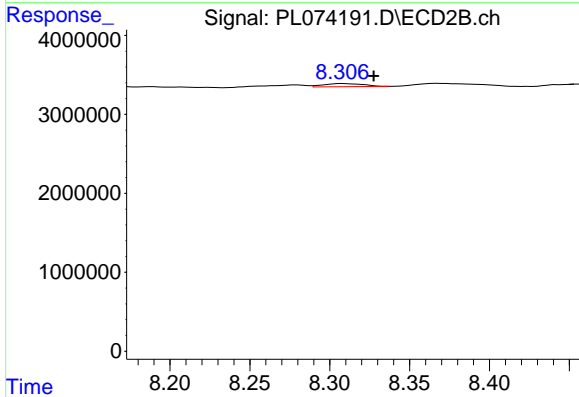
#7 delta-BHC
 R.T.: 6.960 min
 Delta R.T.: 0.012 min
 Response: 3558073
 Conc: 1.46 ng/ml



#9 Endosulfan I

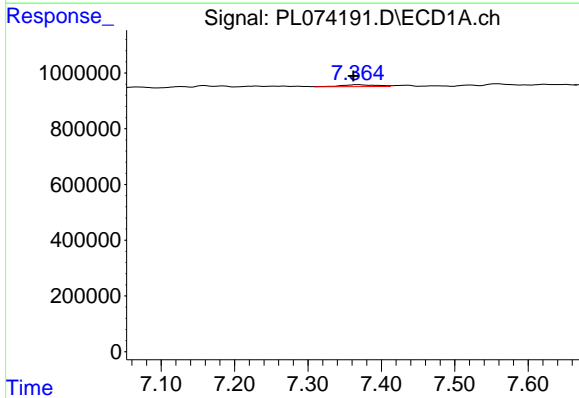
R.T.: 0.000 min
 Exp R.T. : 7.487 min
 Response: 0
 Conc: N.D.

Instrument :
 ECD_L
 ClientSampleId :



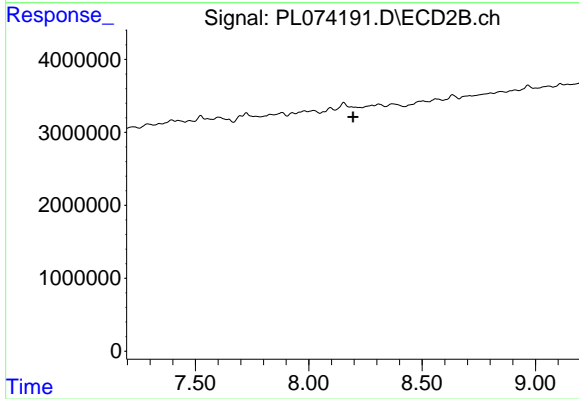
#9 Endosulfan I

R.T.: 8.308 min
 Delta R.T.: -0.020 min
 Response: 699007
 Conc: 0.36 ng/ml



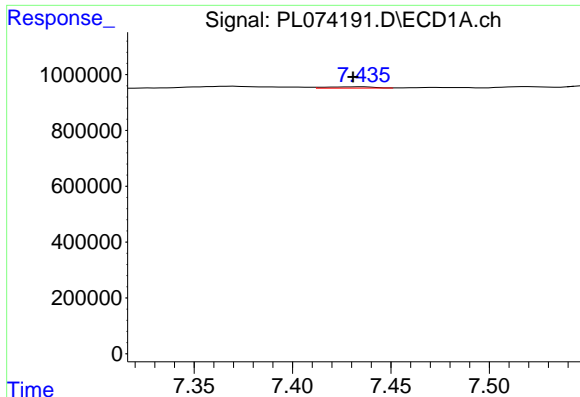
#10 gamma-Chlordane

R.T.: 7.369 min
 Delta R.T.: 0.007 min
 Response: 227104
 Conc: 0.52 ng/ml



#10 gamma-Chlordane

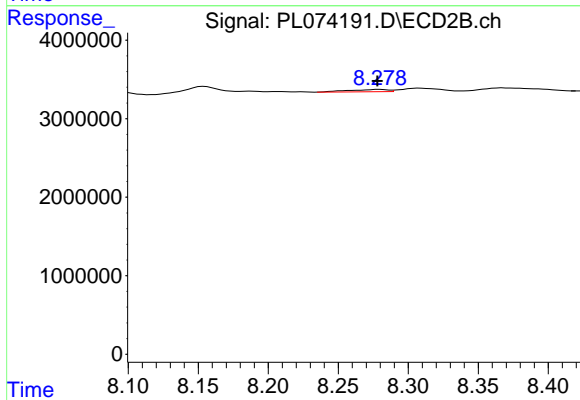
R.T.: 0.000 min
 Exp R.T. : 8.195 min
 Response: 0
 Conc: N.D.



#11 alpha-Chlordane

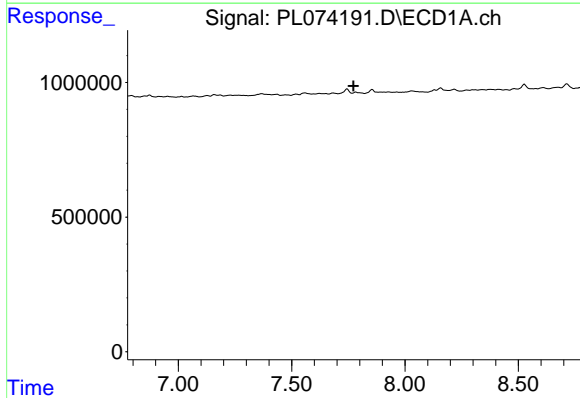
R.T.: 7.436 min
 Delta R.T.: 0.005 min
 Response: 75150
 Conc: 0.17 ng/ml

Instrument :
 ECD_L
 ClientSampleId :



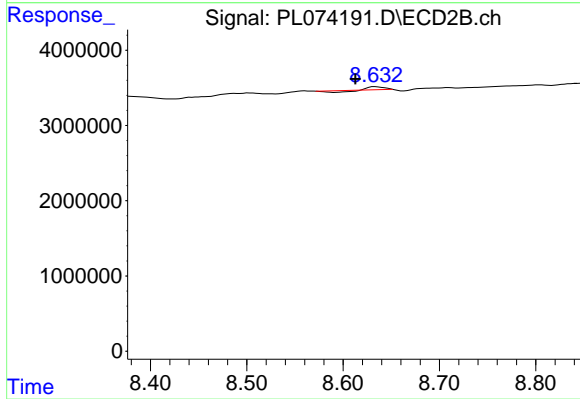
#11 alpha-Chlordane

R.T.: 8.279 min
 Delta R.T.: 0.001 min
 Response: 547203
 Conc: 0.25 ng/ml



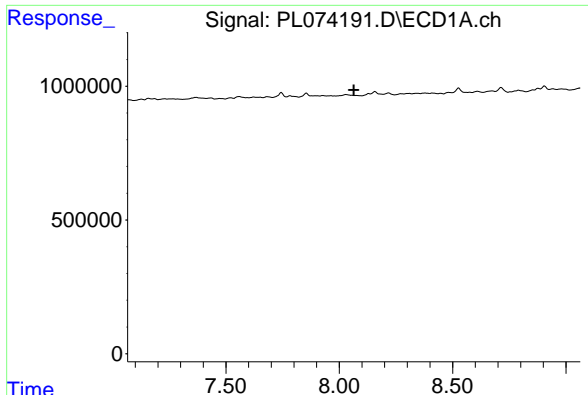
#13 Dieldrin

R.T.: 7.782 min
 Delta R.T.: 0.009 min
 Response: -138440
 Conc: N.D.



#13 Dieldrin

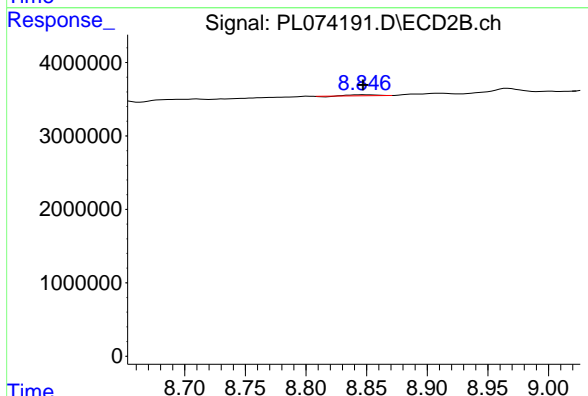
R.T.: 8.633 min
 Delta R.T.: 0.020 min
 Response: 132750
 Conc: 0.07 ng/ml



#14 Endrin

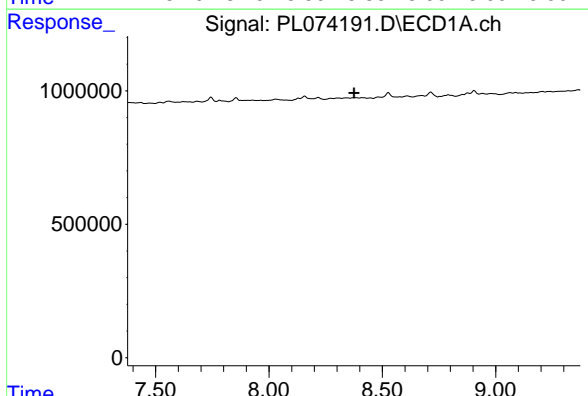
R.T.: 0.000 min
 Exp R.T. : 8.065 min
 Response: 0
 Conc: N.D.

Instrument :
 ECD_L
 ClientSampleId :



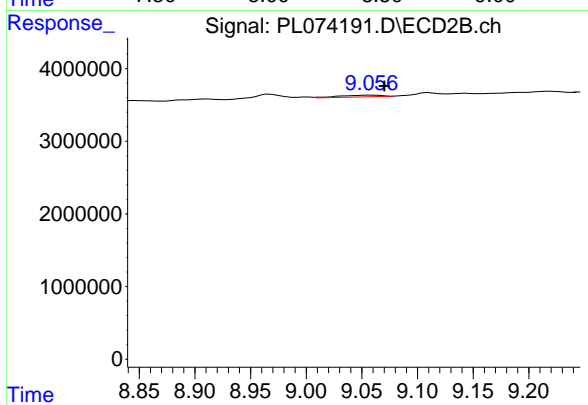
#14 Endrin

R.T.: 8.847 min
 Delta R.T.: 0.000 min
 Response: 184306
 Conc: 0.11 ng/ml



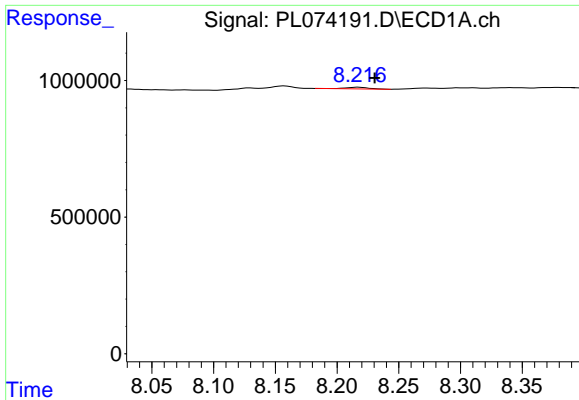
#15 Endosulfan II

R.T.: 0.000 min
 Exp R.T. : 8.375 min
 Response: 0
 Conc: N.D.



#15 Endosulfan II

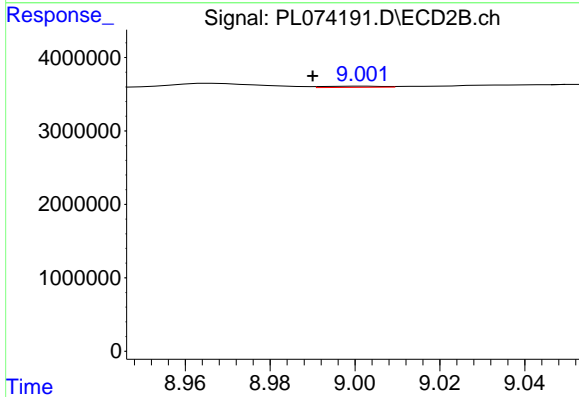
R.T.: 9.058 min
 Delta R.T.: -0.012 min
 Response: 637280
 Conc: 0.37 ng/ml



#16 4,4'-DDD

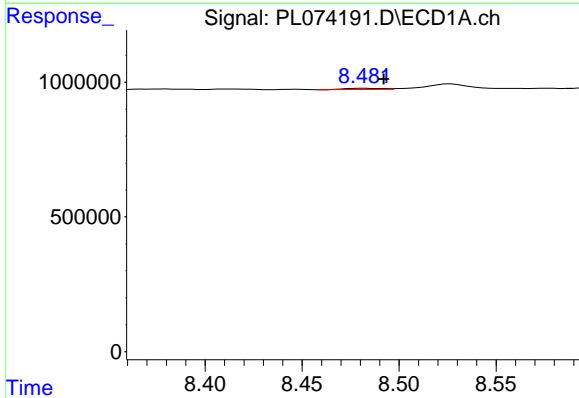
R.T.: 8.218 min
 Delta R.T.: -0.013 min
 Response: 77860
 Conc: 0.24 ng/ml

Instrument :
 ECD_L
 ClientSampleId :



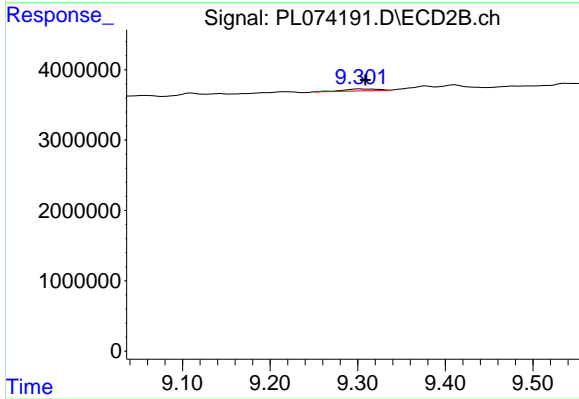
#16 4,4'-DDD

R.T.: 9.002 min
 Delta R.T.: 0.012 min
 Response: 149772
 Conc: 0.10 ng/ml



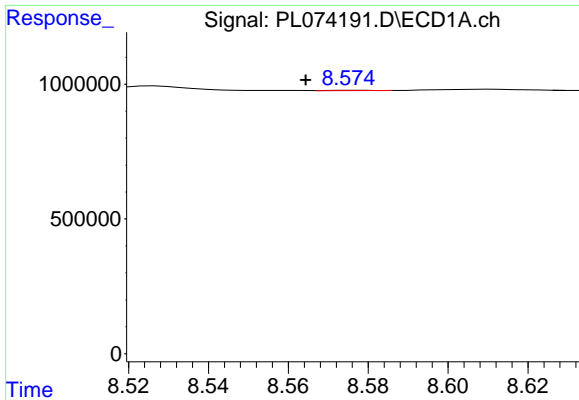
#17 4,4'-DDT

R.T.: 8.482 min
 Delta R.T.: -0.010 min
 Response: 52984
 Conc: 0.14 ng/ml



#17 4,4'-DDT

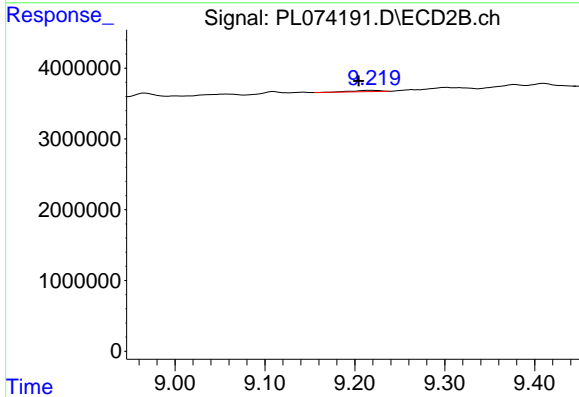
R.T.: 9.302 min
 Delta R.T.: -0.006 min
 Response: 725256
 Conc: 0.41 ng/ml



#18 Endrin aldehyde

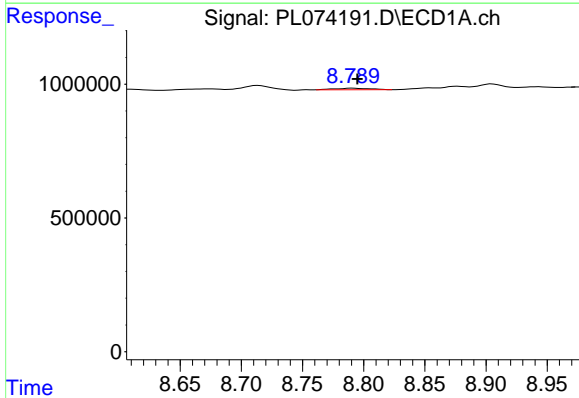
R.T.: 8.576 min
 Delta R.T.: 0.012 min
 Response: 10790
 Conc: 0.03 ng/ml

Instrument :
 ECD_L
 ClientSampleId :



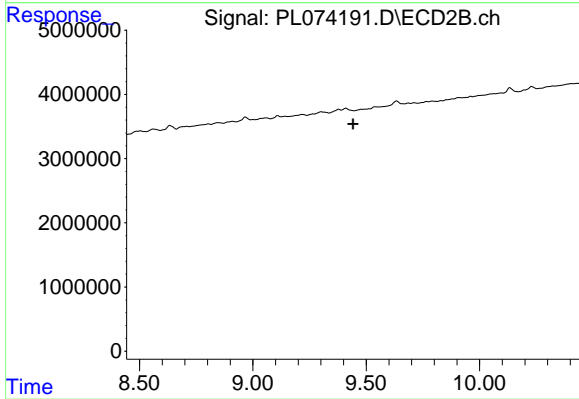
#18 Endrin aldehyde

R.T.: 9.220 min
 Delta R.T.: 0.015 min
 Response: 419286
 Conc: 0.32 ng/ml



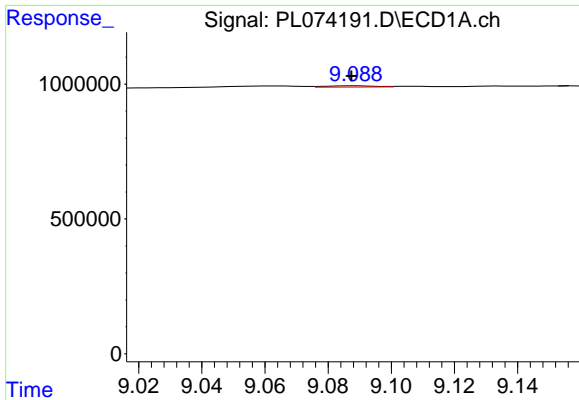
#19 Endosulfan Sulfate

R.T.: 8.791 min
 Delta R.T.: -0.004 min
 Response: 114123
 Conc: 0.27 ng/ml



#19 Endosulfan Sulfate

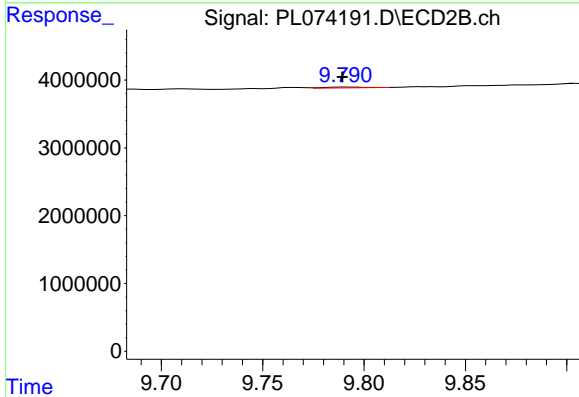
R.T.: 0.000 min
 Exp R.T. : 9.442 min
 Response: 0
 Conc: N.D.



#20 Methoxychlor

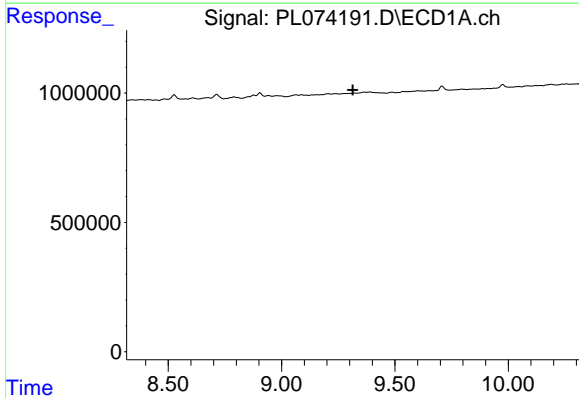
R.T.: 9.089 min
 Delta R.T.: 0.002 min
 Response: 52612
 Conc: 0.21 ng/ml

Instrument :
 ECD_L
 ClientSampleId :



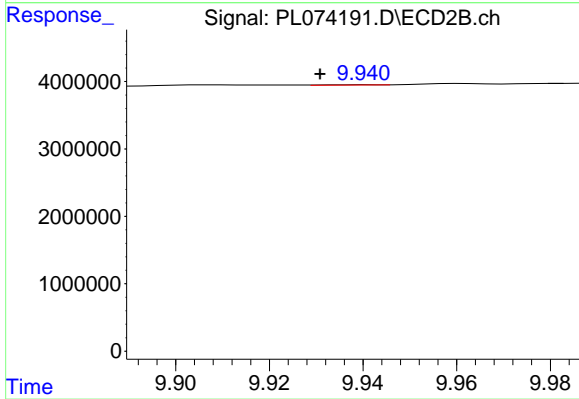
#20 Methoxychlor

R.T.: 9.791 min
 Delta R.T.: 0.002 min
 Response: 178811
 Conc: 0.19 ng/ml



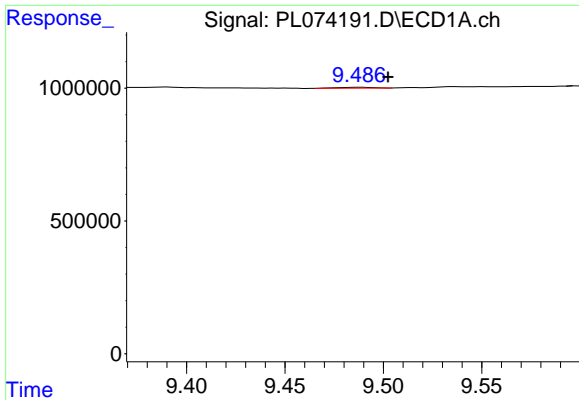
#21 Endrin ketone

R.T.: 0.000 min
 Exp R.T. : 9.314 min
 Response: 0
 Conc: N.D.



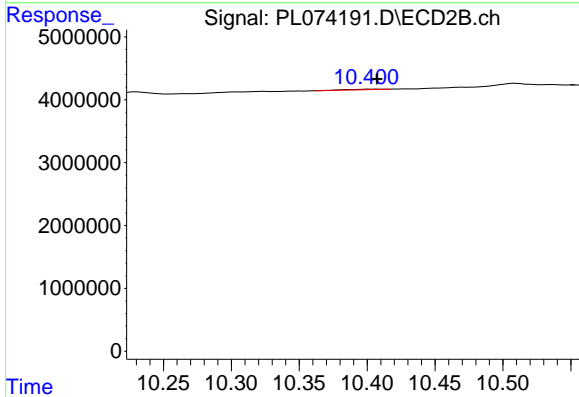
#21 Endrin ketone

R.T.: 9.941 min
 Delta R.T.: 0.011 min
 Response: 35595
 Conc: 0.02 ng/ml

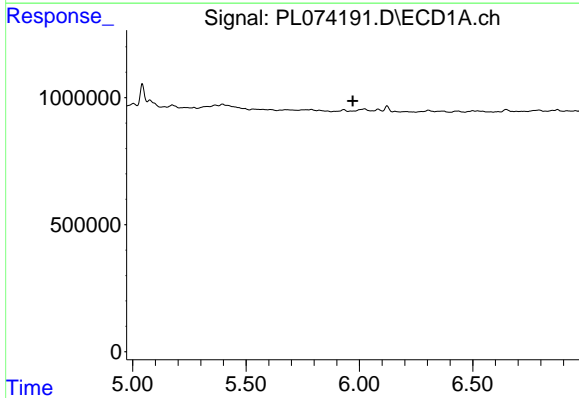


#22 Mirex
 R.T.: 9.489 min
 Delta R.T.: -0.013 min
 Response: 40420
 Conc: 0.09 ng/ml

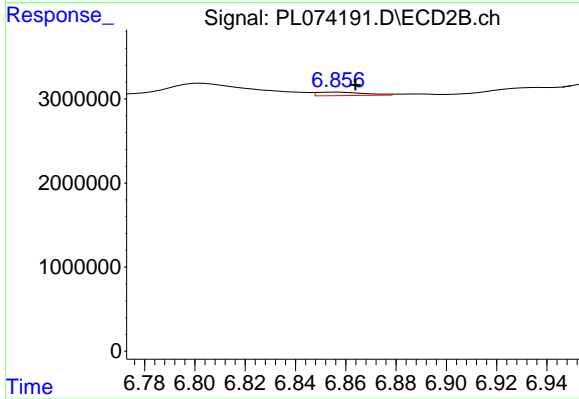
Instrument :
 ECD_L
 ClientSampleId :



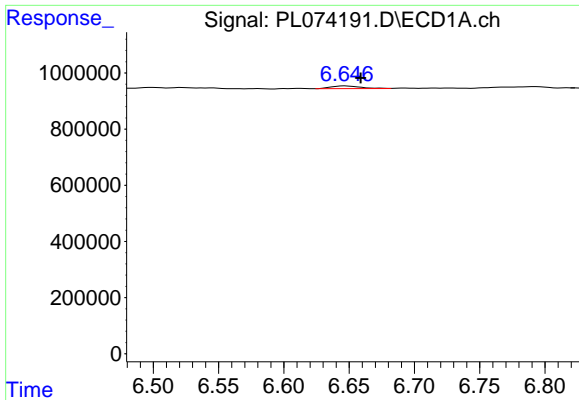
#22 Mirex
 R.T.: 10.401 min
 Delta R.T.: -0.006 min
 Response: 167815
 Conc: 0.12 ng/ml



#23 Chlordane-1
 R.T.: 0.000 min
 Exp R.T. : 5.970 min
 Response: 0
 Conc: N.D.



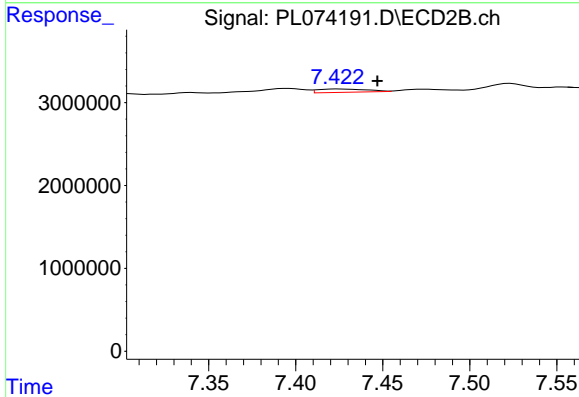
#23 Chlordane-1
 R.T.: 6.857 min
 Delta R.T.: -0.007 min
 Response: 541142
 Conc: 6.78 ng/ml



#24 Chlordane-2

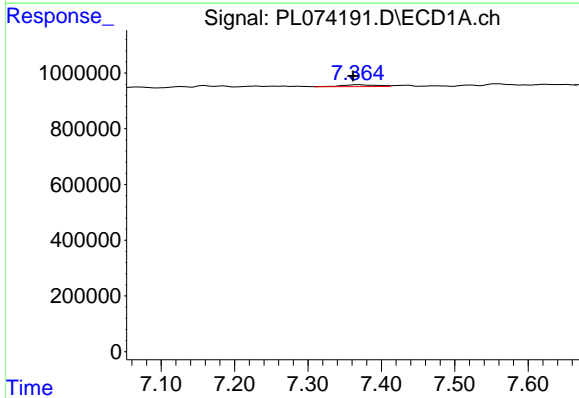
R.T.: 6.648 min
 Delta R.T.: -0.011 min
 Response: 151864
 Conc: 8.71 ng/ml

Instrument :
 ECD_L
 ClientSampleId :



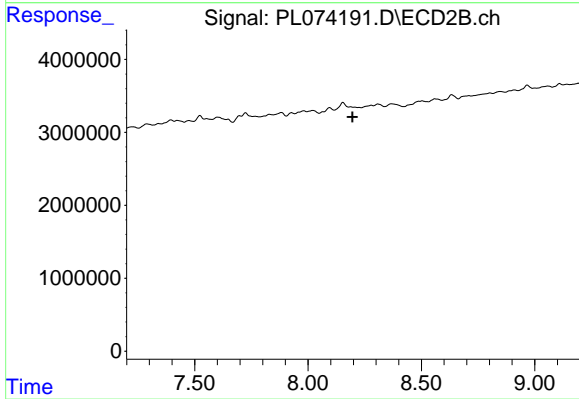
#24 Chlordane-2

R.T.: 7.424 min
 Delta R.T.: -0.023 min
 Response: 796416
 Conc: 9.64 ng/ml



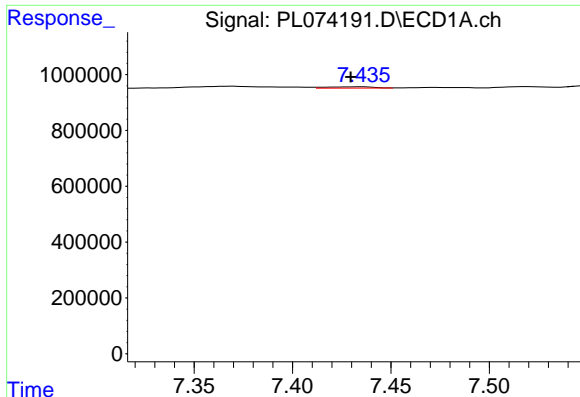
#25 Chlordane-3

R.T.: 7.369 min
 Delta R.T.: 0.007 min
 Response: 227104
 Conc: 5.25 ng/ml



#25 Chlordane-3

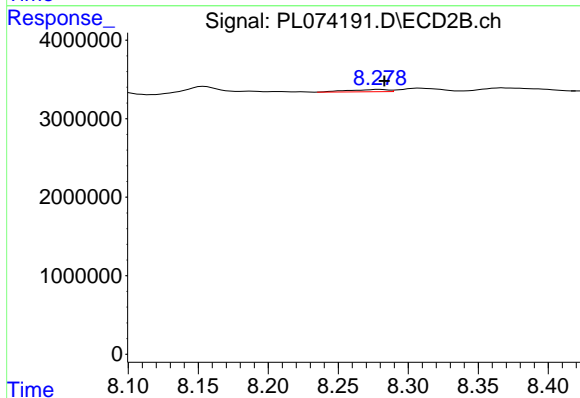
R.T.: 0.000 min
 Exp R.T. : 8.197 min
 Response: 0
 Conc: N.D.



#26 Chlordane-4

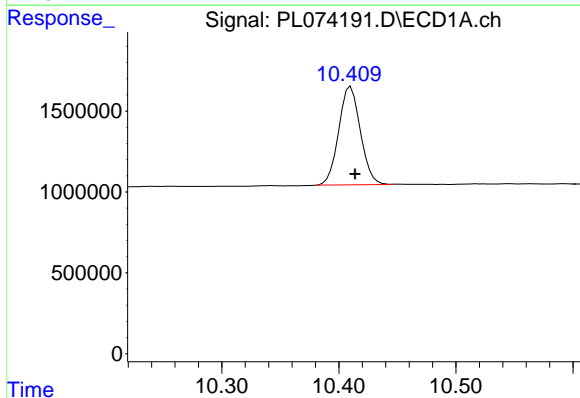
R.T.: 7.436 min
 Delta R.T.: 0.006 min
 Response: 75150
 Conc: 1.62 ng/ml

Instrument :
 ECD_L
 ClientSampleId :



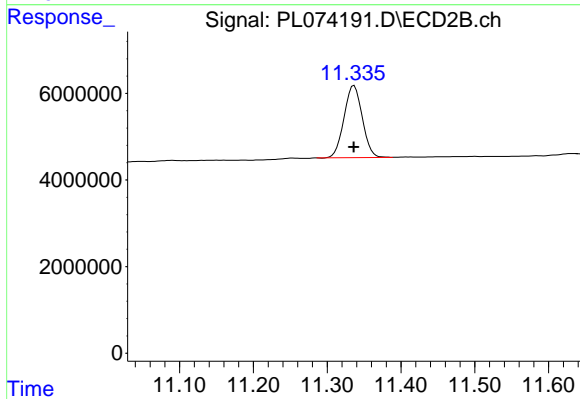
#26 Chlordane-4

R.T.: 8.279 min
 Delta R.T.: -0.004 min
 Response: 547203
 Conc: 1.38 ng/ml



#28 Decachlorobiphenyl

R.T.: 10.410 min
 Delta R.T.: -0.004 min
 Response: 7833854
 Conc: 15.06 ng/ml



#28 Decachlorobiphenyl

R.T.: 11.336 min
 Delta R.T.: 0.000 min
 Response: 28571234
 Conc: 16.18 ng/ml