

Data Path : Z:\pestpcbsrv\HPCHEM1\ECD_L\Data\PL042021\
 Data File : PL066364.D
 Signal(s) : Signal #1: ECD1A.ch Signal #2: ECD2B.ch
 Acq On : 20 Apr 2021 18:01
 Operator : AR\AJ
 Sample : M2090-04
 Misc :
 ALS Vial : 30 Sample Multiplier: 1

Instrument :
 ECD_L
 ClientSampleId :

Integration File signal 1: autoint1.e
 Integration File signal 2: autoint2.e
 Quant Time: Apr 21 08:17:28 2021
 Quant Method : Z:\pestpcbsrv\HPCHEM1\ECD_L\methods\PL041421.M
 Quant Title : GC Extractables
 QLast Update : Wed Apr 14 15:37:20 2021
 Response via : Initial Calibration
 Integrator: ChemStation

Volume Inj. : 1 µl
 Signal #1 Phase : ZB-MR2 Signal #2 Phase: ZB-MR1
 Signal #1 Info : 30M x 0.32mm x0.2 Signal #2 Info : 30M x 0.32mm x0.5µm

Compound	RT#1	RT#2	Resp#1	Resp#2	ng/ml	ng/ml

System Monitoring Compounds						
1) SA Tetrachlo...	3.444	4.154	48614675	81709548	19.100	20.313
28) SA Decachlor...	8.165	9.352	46841305	62477746	19.638	19.130
Target Compounds						
2) A alpha-BHC	0.000	4.583f	0	744337	N.D.	0.128 #
3) MA gamma-BHC...	4.161	4.837	1383169	1117182	0.355	0.210 #
4) MA Heptachlor	0.000	5.345f	0	9088380	N.D.	1.633 #
5) MB Aldrin	0.000	5.666	0	365227	N.D.	0.073 #
7) B delta-BHC	0.000	5.272f	0	7181087	N.D.	1.396 #
10) B gamma-Chl...	0.000	6.310	0	280920	N.D.	0.062 #
15) B Endosulfa...	0.000	7.123	0	5573529	N.D.	1.599 #
17) MA 4,4'-DDT	0.000	7.350	0	4032517	N.D.	1.189 #
18) B Endrin al...	0.000	7.266	0	7288778	N.D.	2.606 #
21) B Endrin ke...	0.000	7.972	0	941891	N.D.	0.256 #
23) Chlordane-1	4.335f	0.000	3771812	0	32.993	N.D. #
24) Chlordane-2	0.000	5.666f	0	365227	N.D.	2.076 #
25) Chlordane-3	0.000	6.310	0	280920	N.D.	0.427 #

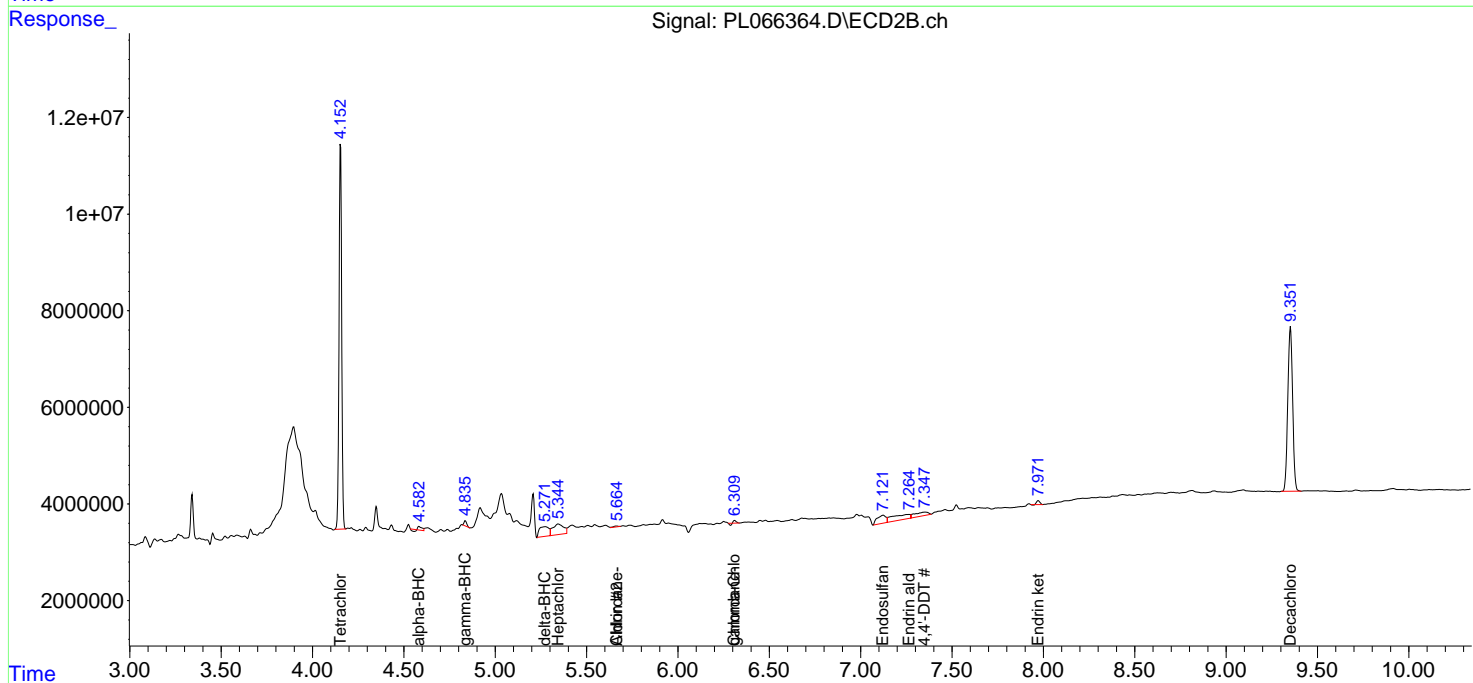
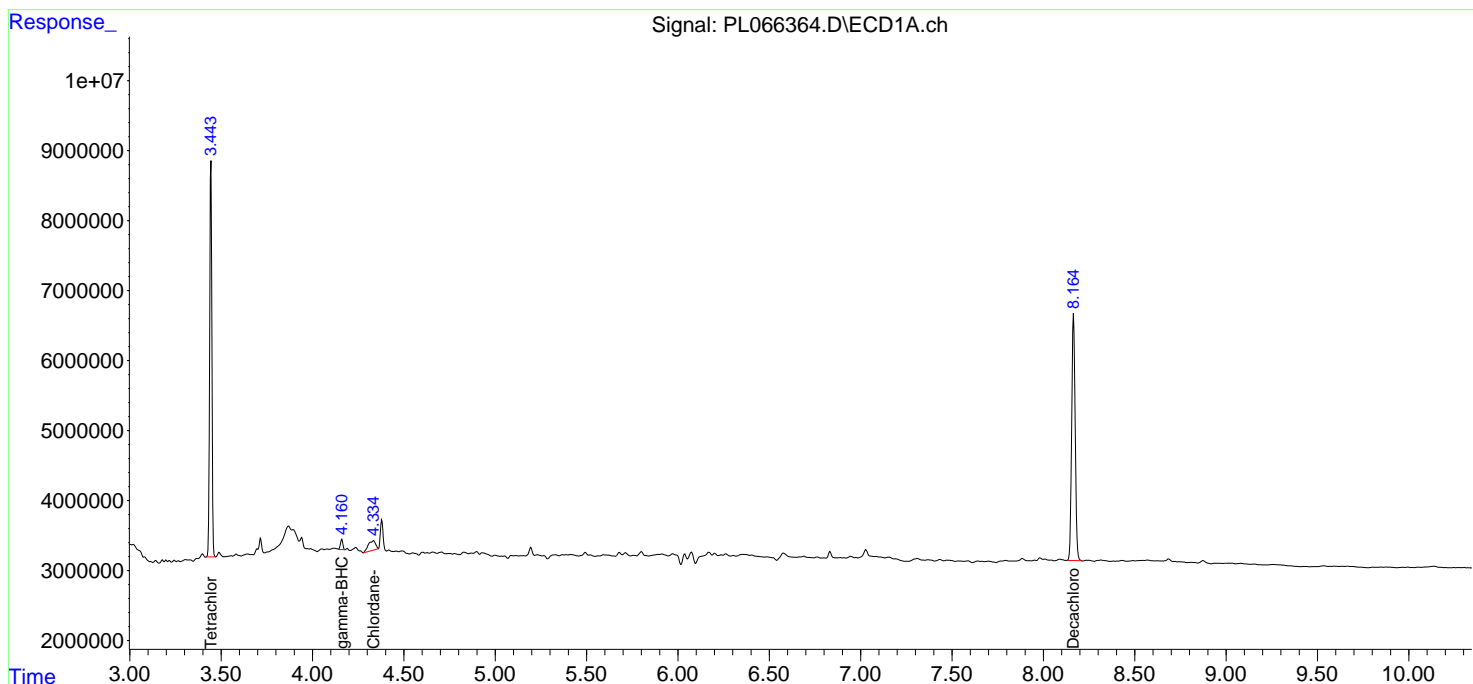
(f)=RT Delta > 1/2 Window (#)=Amounts differ by > 25% (m)=manual int.

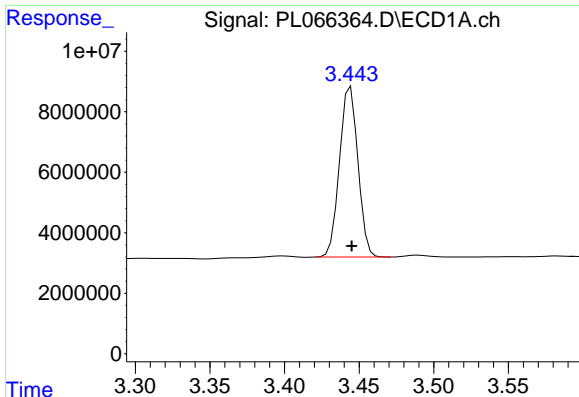
Data Path : Z:\pestpcbsrv\HPCHEM1\ECD_L\Data\PL042021\
 Data File : PL066364.D
 Signal(s) : Signal #1: ECD1A.ch Signal #2: ECD2B.ch
 Acq On : 20 Apr 2021 18:01
 Operator : AR\AJ
 Sample : M2090-04
 Misc :
 ALS Vial : 30 Sample Multiplier: 1

Instrument :
 ECD_L
 ClientSampled :

Integration File signal 1: autoint1.e
 Integration File signal 2: autoint2.e
 Quant Time: Apr 21 08:17:28 2021
 Quant Method : Z:\pestpcbsrv\HPCHEM1\ECD_L\methods\PL041421.M
 Quant Title : GC Extractables
 QLast Update : Wed Apr 14 15:37:20 2021
 Response via : Initial Calibration
 Integrator: ChemStation

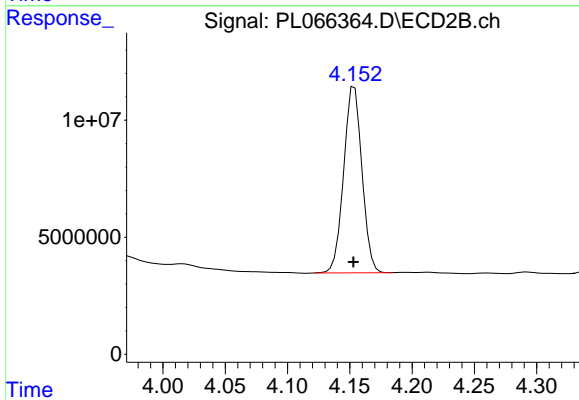
Volume Inj. : 1 µl
 Signal #1 Phase : ZB-MR2 Signal #2 Phase: ZB-MR1
 Signal #1 Info : 30M x 0.32mm x0.2 Signal #2 Info : 30M x 0.32mm x0.5µm



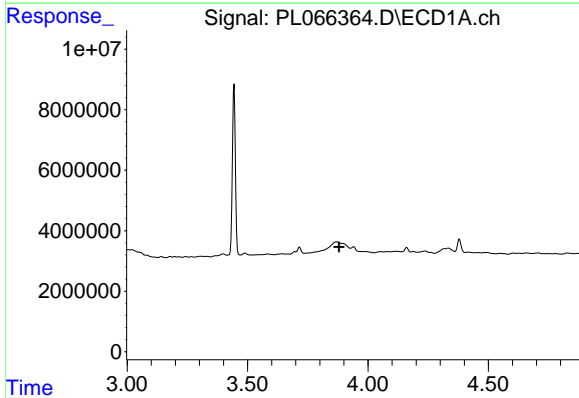


#1 Tetrachloro-m-xylene
 R.T.: 3.444 min
 Delta R.T.: 0.000 min
 Response: 48614675
 Conc: 19.10 ng/ml

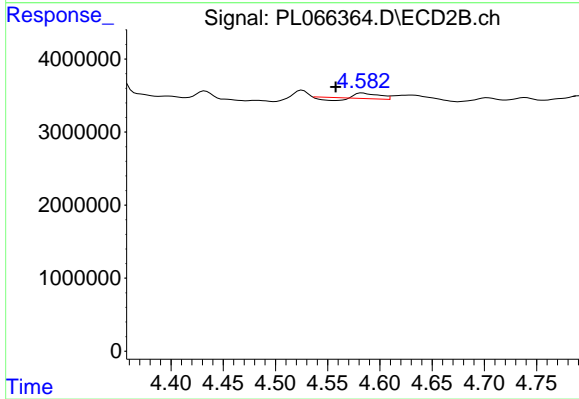
Instrument :
 ECD_L
 ClientSampled :



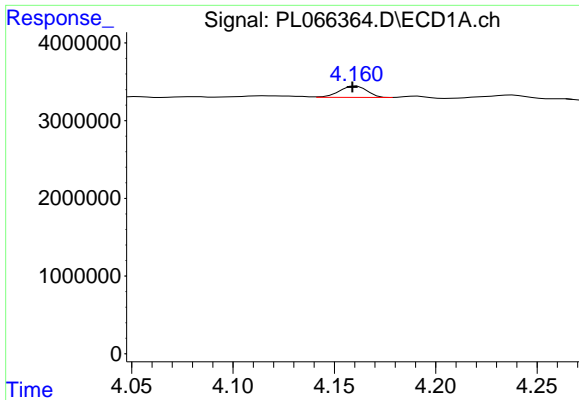
#1 Tetrachloro-m-xylene
 R.T.: 4.154 min
 Delta R.T.: 0.000 min
 Response: 81709548
 Conc: 20.31 ng/ml



#2 alpha-BHC
 R.T.: 0.000 min
 Exp R.T. : 3.880 min
 Response: 0
 Conc: N.D.

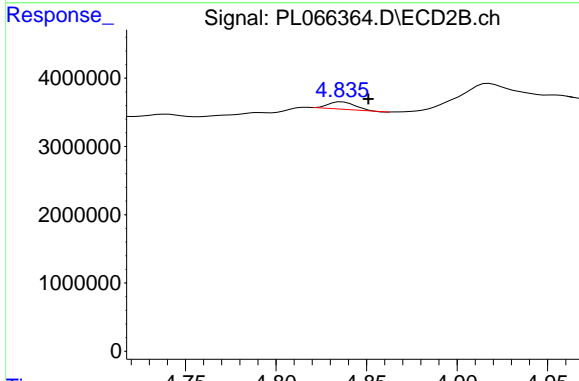


#2 alpha-BHC
 R.T.: 4.583 min
 Delta R.T.: 0.026 min
 Response: 744337
 Conc: 0.13 ng/ml

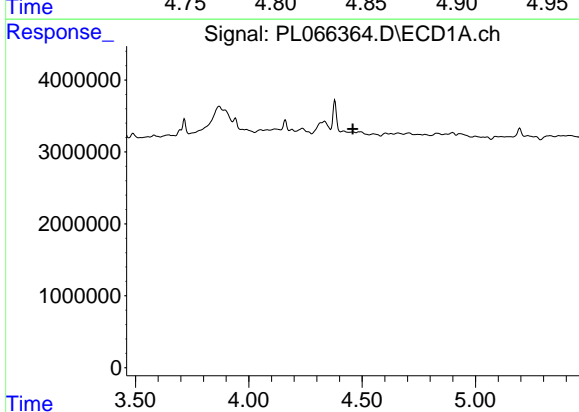


#3 gamma-BHC (Lindane)
 R.T.: 4.161 min
 Delta R.T.: 0.002 min
 Response: 1383169
 Conc: 0.35 ng/ml

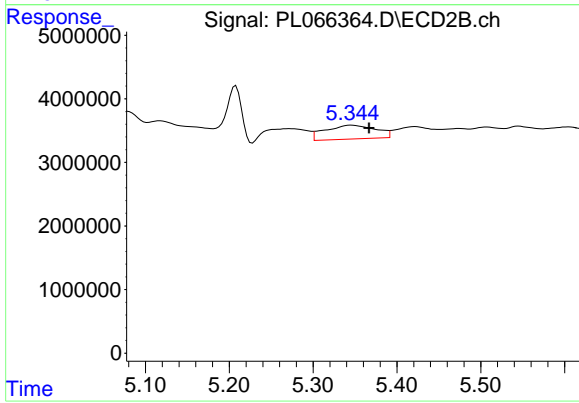
Instrument :
 ECD_L
 ClientSampleId :



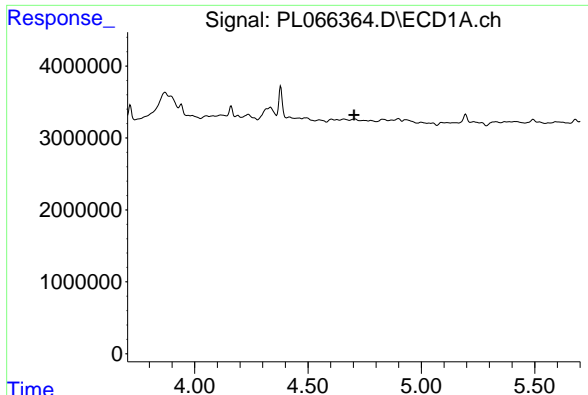
#3 gamma-BHC (Lindane)
 R.T.: 4.837 min
 Delta R.T.: -0.014 min
 Response: 1117182
 Conc: 0.21 ng/ml



#4 Heptachlor
 R.T.: 0.000 min
 Exp R.T. : 4.459 min
 Response: 0
 Conc: N.D.

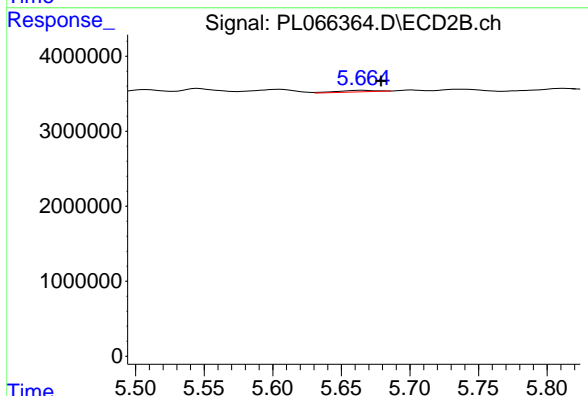


#4 Heptachlor
 R.T.: 5.345 min
 Delta R.T.: -0.022 min
 Response: 9088380
 Conc: 1.63 ng/ml

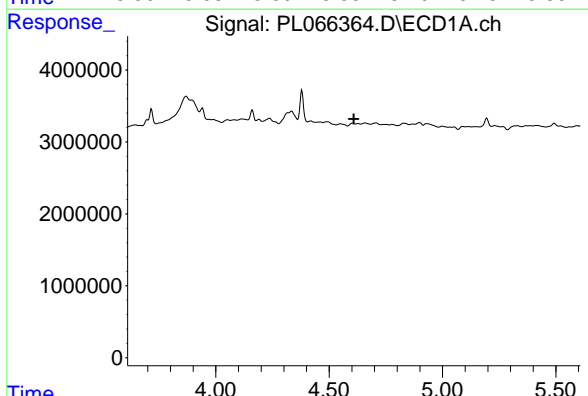


#5 Aldrin
 R.T.: 0.000 min
 Exp R.T. : 4.704 min
 Response: 0
 Conc: N.D.

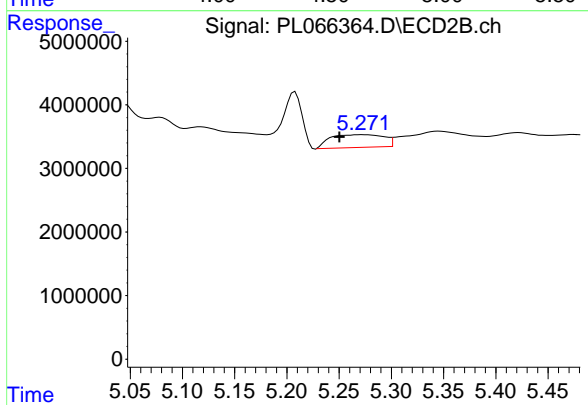
Instrument :
 ECD_L
 ClientSampled :



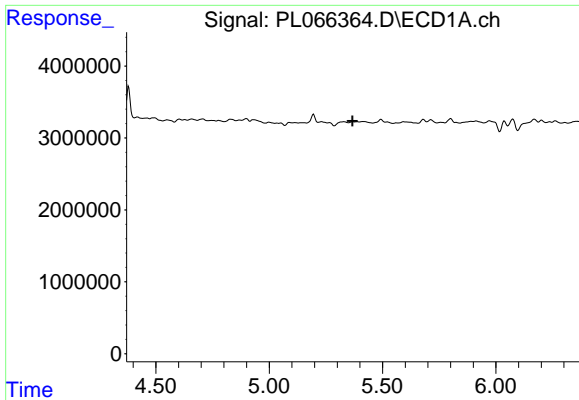
#5 Aldrin
 R.T.: 5.666 min
 Delta R.T.: -0.013 min
 Response: 365227
 Conc: 0.07 ng/ml



#7 delta-BHC
 R.T.: 0.000 min
 Exp R.T. : 4.608 min
 Response: 0
 Conc: N.D.



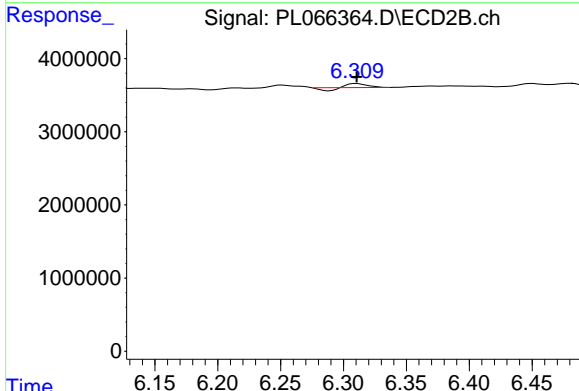
#7 delta-BHC
 R.T.: 5.272 min
 Delta R.T.: 0.022 min
 Response: 7181087
 Conc: 1.40 ng/ml



#10 gamma-Chlordane

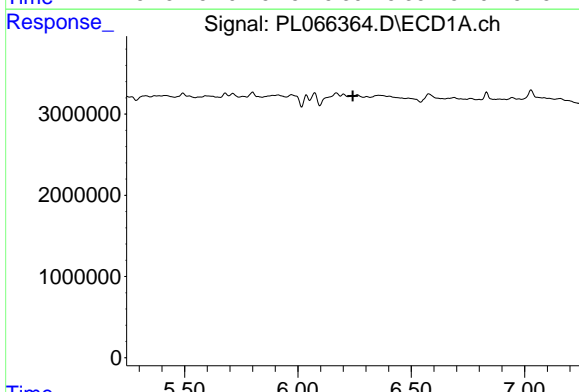
R.T.: 0.000 min
 Exp R.T. : 5.368 min
 Response: 0
 Conc: N.D.

Instrument :
 ECD_L
 ClientSampled :



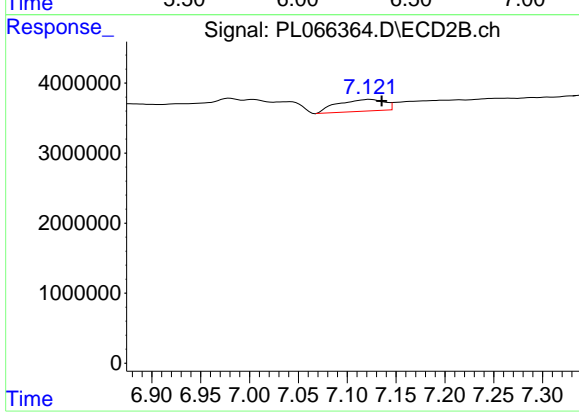
#10 gamma-Chlordane

R.T.: 6.310 min
 Delta R.T.: 0.000 min
 Response: 280920
 Conc: 0.06 ng/ml



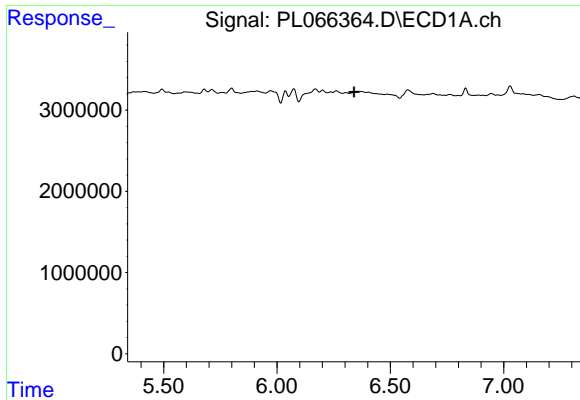
#15 Endosulfan II

R.T.: 0.000 min
 Exp R.T. : 6.242 min
 Response: 0
 Conc: N.D.



#15 Endosulfan II

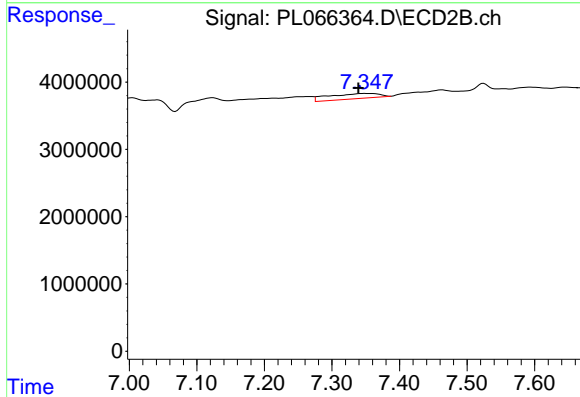
R.T.: 7.123 min
 Delta R.T.: -0.012 min
 Response: 5573529
 Conc: 1.60 ng/ml



#17 4,4'-DDT

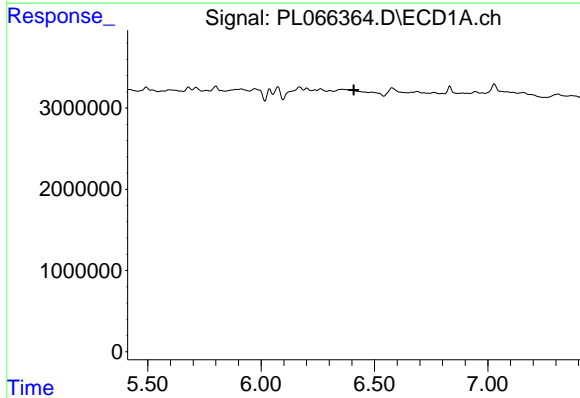
R.T.: 0.000 min
 Exp R.T.: 6.341 min
 Response: 0
 Conc: N.D.

Instrument :
 ECD_L
 ClientSampled :



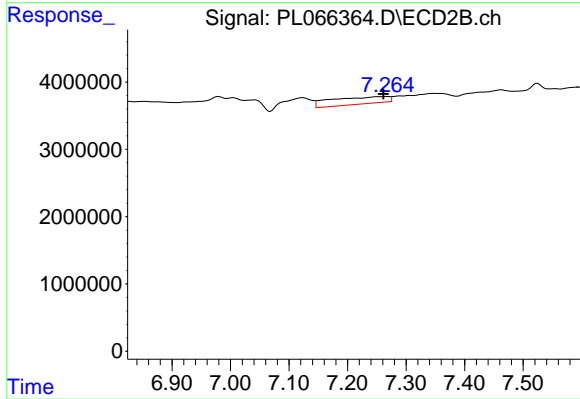
#17 4,4'-DDT

R.T.: 7.350 min
 Delta R.T.: 0.011 min
 Response: 4032517
 Conc: 1.19 ng/ml



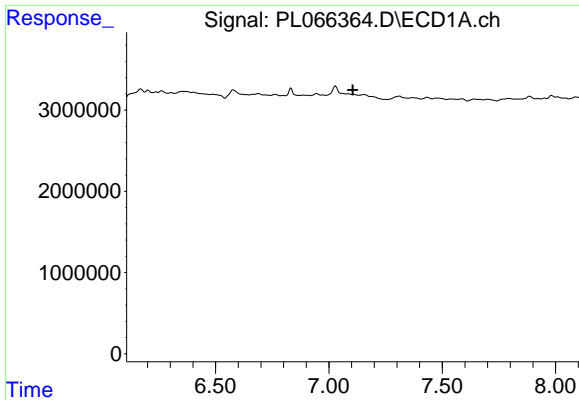
#18 Endrin aldehyde

R.T.: 0.000 min
 Exp R.T.: 6.409 min
 Response: 0
 Conc: N.D.



#18 Endrin aldehyde

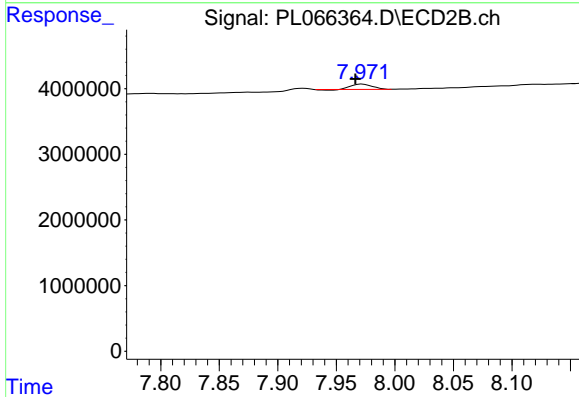
R.T.: 7.266 min
 Delta R.T.: 0.005 min
 Response: 7288778
 Conc: 2.61 ng/ml



#21 Endrin ketone

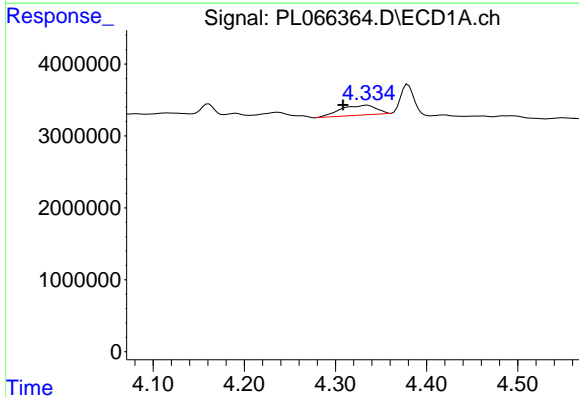
R.T.: 0.000 min
 Exp R.T. : 7.105 min
 Response: 0
 Conc: N.D.

Instrument :
 ECD_L
 ClientSampleId :



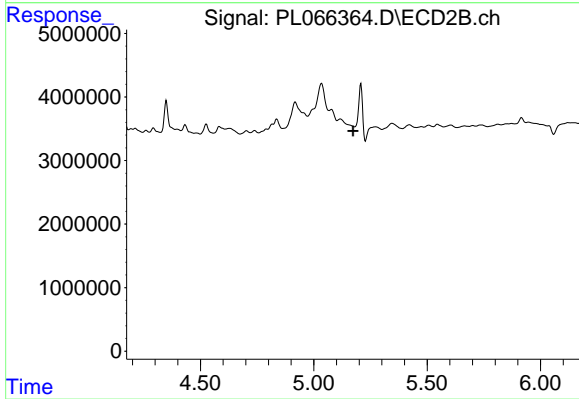
#21 Endrin ketone

R.T.: 7.972 min
 Delta R.T.: 0.006 min
 Response: 941891
 Conc: 0.26 ng/ml



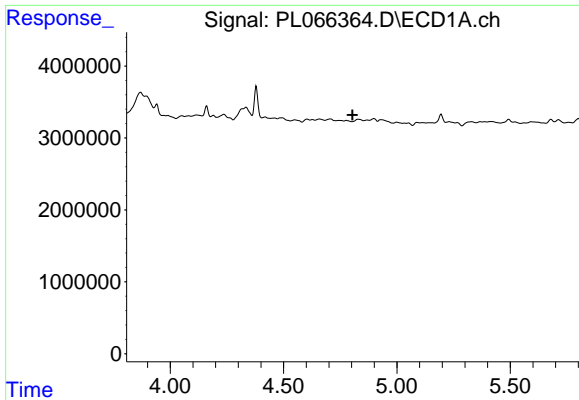
#23 Chlordane-1

R.T.: 4.335 min
 Delta R.T.: 0.027 min
 Response: 3771812
 Conc: 32.99 ng/ml



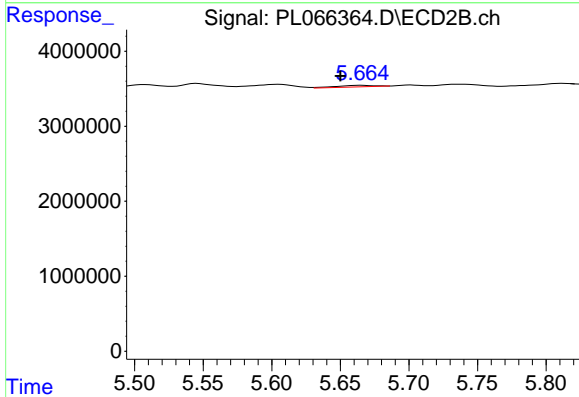
#23 Chlordane-1

R.T.: 0.000 min
 Exp R.T. : 5.173 min
 Response: 0
 Conc: N.D.

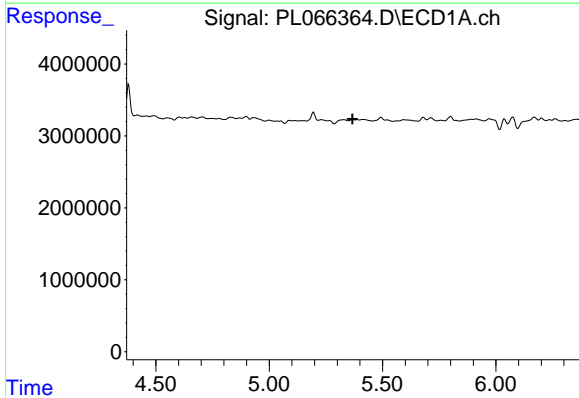


#24 Chlordane-2
 R.T.: 0.000 min
 Exp R.T. : 4.805 min
 Response: 0
 Conc: N.D.

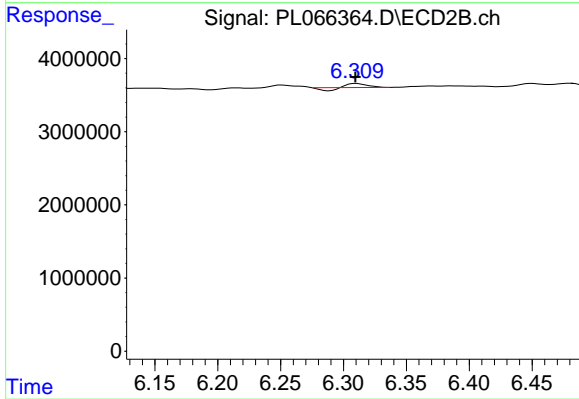
Instrument :
 ECD_L
 ClientSampleId :



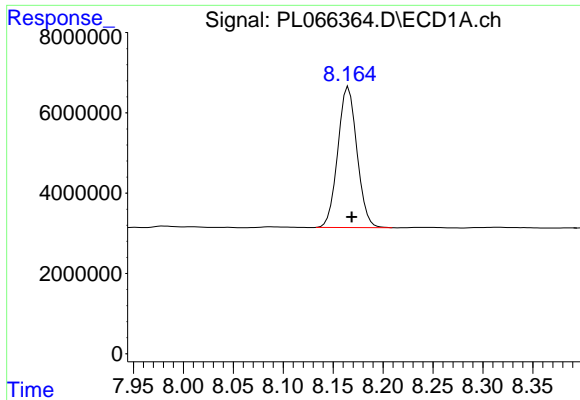
#24 Chlordane-2
 R.T.: 5.666 min
 Delta R.T.: 0.015 min
 Response: 365227
 Conc: 2.08 ng/ml



#25 Chlordane-3
 R.T.: 0.000 min
 Exp R.T. : 5.368 min
 Response: 0
 Conc: N.D.

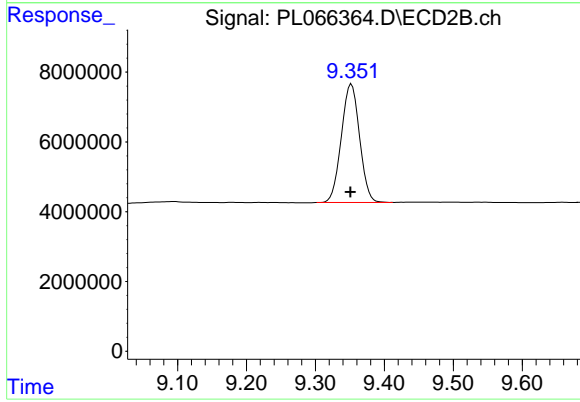


#25 Chlordane-3
 R.T.: 6.310 min
 Delta R.T.: 0.000 min
 Response: 280920
 Conc: 0.43 ng/ml



#28 Decachlorobiphenyl
R.T.: 8.165 min
Delta R.T.: -0.003 min
Response: 46841305
Conc: 19.64 ng/ml

Instrument :
ECD_L
ClientSampleId :



#28 Decachlorobiphenyl
R.T.: 9.352 min
Delta R.T.: 0.002 min
Response: 62477746
Conc: 19.13 ng/ml