

Data Path : Z:\pestpcbsrv\HPCHEM1\ECD_L\Data\PL042022\
 Data File : PL074208.D
 Signal(s) : Signal #1: ECD1A.ch Signal #2: ECD2B.ch
 Acq On : 20 Apr 2022 11:16
 Operator : AR\AJ
 Sample : PEM
 Misc :
 ALS Vial : 3 Sample Multiplier: 1

Instrument :
 ECD_L
ClientSampleId :
 PEM

Manual Integrations
APPROVED

Reviewed By :Abdul Mirza 04/22/2022
 Supervised By :mohammad ahmed 04/22/2022

Integration File signal 1: autoint1.e
 Integration File signal 2: autoint2.e
 Quant Time: Apr 21 02:53:43 2022
 Quant Method : Z:\pestpcbsrv\HPCHEM1\ECD_L\methods\PL040822.M
 Quant Title : GC Extractables
 QLast Update : Thu Apr 14 09:29:23 2022
 Response via : Initial Calibration
 Integrator: ChemStation

Volume Inj. : 1 µl
 Signal #1 Phase : ZB-MR2 Signal #2 Phase: ZB-MR1
 Signal #1 Info : 30M x 0.32mm x0.2 Signal #2 Info : 30M x 0.32mm x0.5µm

Compound	RT#1	RT#2	Resp#1	Resp#2	ng/ml	ng/ml

System Monitoring Compounds						
1) SA Tetrachlo...	4.635	5.489	6913151	37103296	21.396	20.810
28) SA Decachlor...	10.405	11.331	10595016	38812368	20.374m	21.974
Target Compounds						
2) A alpha-BHC	5.342	6.052	4124241	23870842	9.828	9.480
3) MA gamma-BHC...	5.766	6.441	4177431	23056417	9.961	9.740
6) B beta-BHC	6.146	6.679	2248305	12307697	11.003	10.921
12) B 4,4'-DDE	7.640	8.461	100825	514632	0.276	0.258m
14) MA Endrin	8.059	8.845	20900988	93438383	51.451	55.169
16) A 4,4'-DDD	8.224	8.987	86464	397238	0.268m	0.258m
17) MA 4,4'-DDT	8.486	9.307	41614047	183.2E6	112.580	103.330
18) B Endrin al...	8.563	9.200	56449	146624	0.174m	0.114m#
20) A Methoxychlor	9.082	9.786	60056912	231.4E6	241.903	240.539
21) B Endrin ke...	9.307	9.928	497944	1059030	1.019m	0.612 #

(f)=RT Delta > 1/2 Window (#)=Amounts differ by > 25% (m)=manual int.

Data Path : Z:\pestpcbsrv\HPCHEM1\ECD_L\Data\PL042022\
 Data File : PL074208.D
 Signal(s) : Signal #1: ECD1A.ch Signal #2: ECD2B.ch
 Acq On : 20 Apr 2022 11:16
 Operator : AR\AJ
 Sample : PEM
 Misc :
 ALS Vial : 3 Sample Multiplier: 1

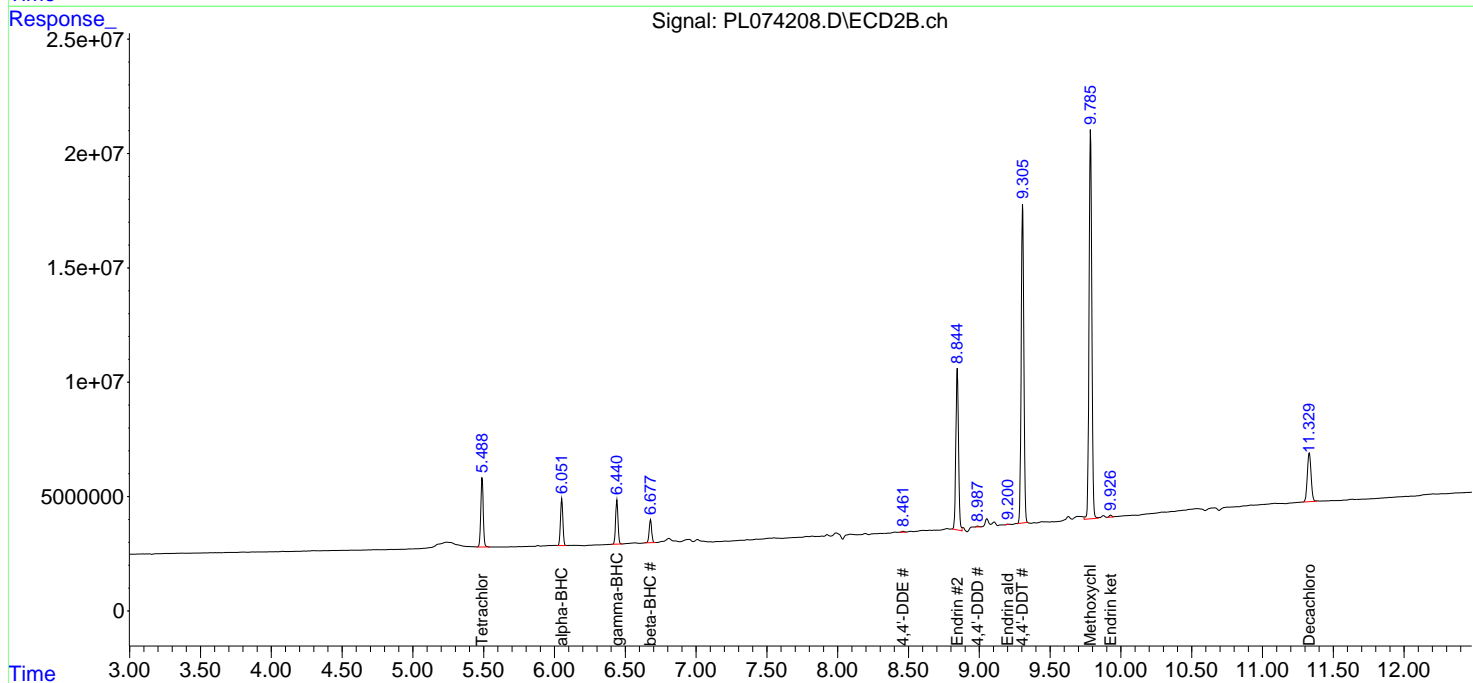
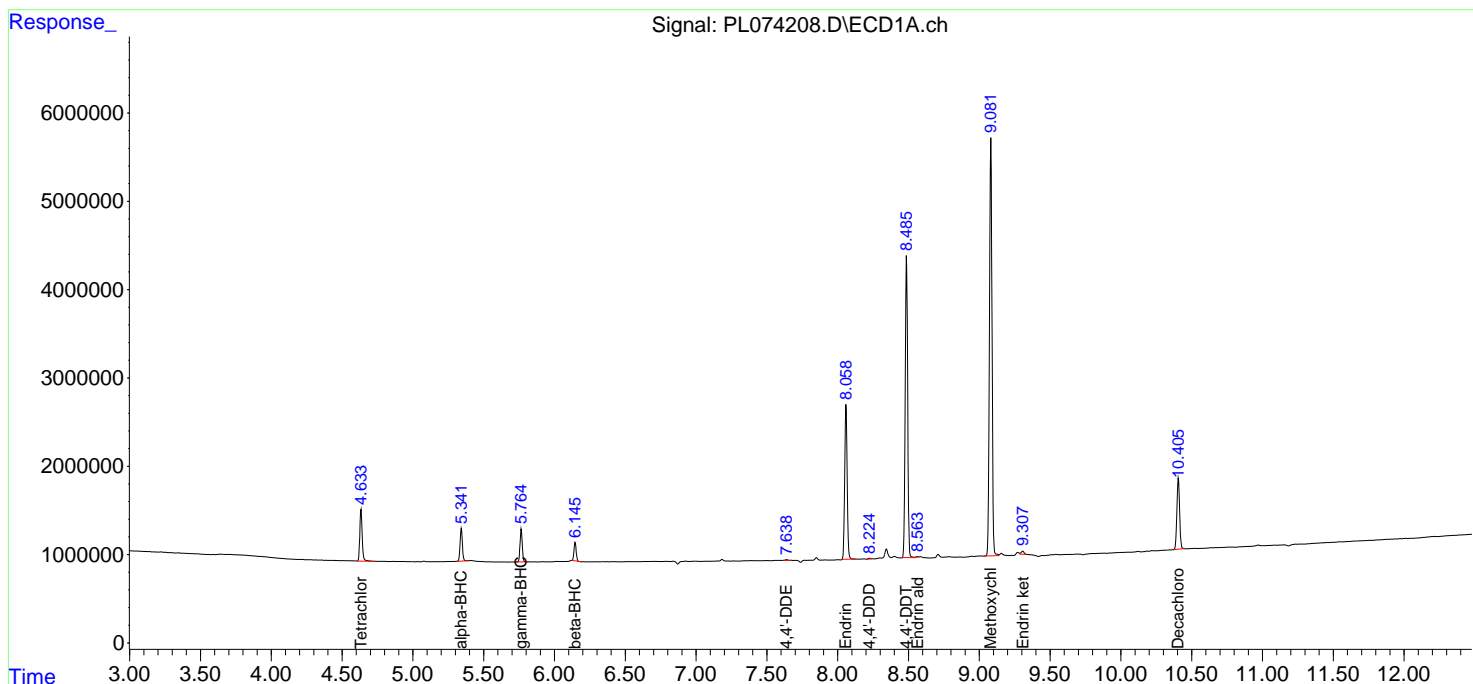
Instrument :
 ECD_L
 ClientSampleId :
 PEM

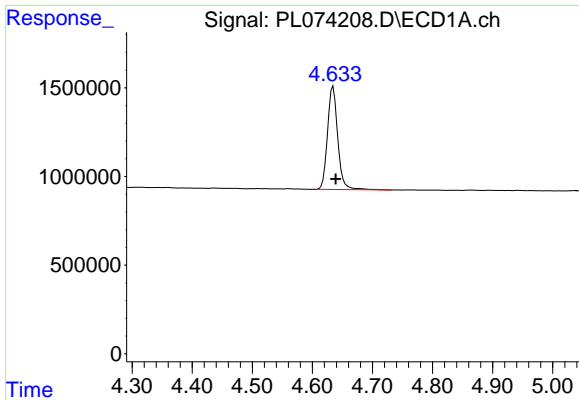
Manual Integrations
 APPROVED

Reviewed By :Abdul Mirza 04/22/2022
 Supervised By :mohammad ahmed 04/22/2022

Integration File signal 1: autoint1.e
 Integration File signal 2: autoint2.e
 Quant Time: Apr 21 02:53:43 2022
 Quant Method : Z:\pestpcbsrv\HPCHEM1\ECD_L\methods\PL040822.M
 Quant Title : GC Extractables
 QLast Update : Thu Apr 14 09:29:23 2022
 Response via : Initial Calibration
 Integrator: ChemStation

Volume Inj. : 1 µl
 Signal #1 Phase : ZB-MR2 Signal #2 Phase: ZB-MR1
 Signal #1 Info : 30M x 0.32mm x0.2 Signal #2 Info : 30M x 0.32mm x0.5µm



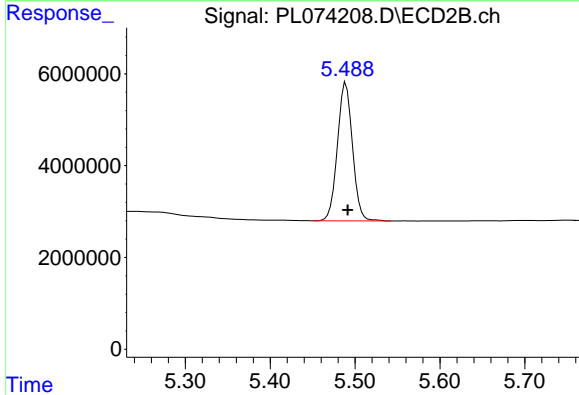


#1 Tetrachloro-m-xylene
 R.T.: 4.635 min
 Delta R.T.: -0.004 min
 Response: 6913151
 Conc: 21.40 ng/ml

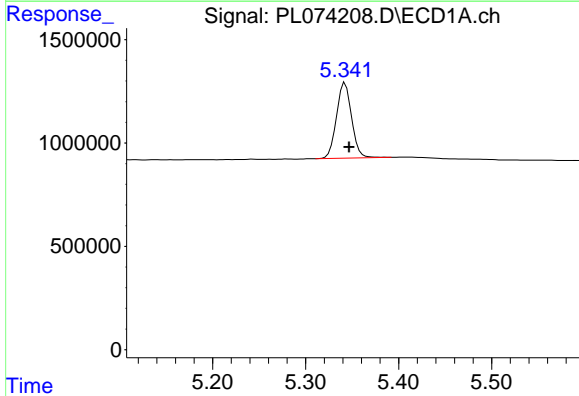
Instrument :
 ECD_L
 ClientSampleId :
 PEM

Manual Integrations
 APPROVED

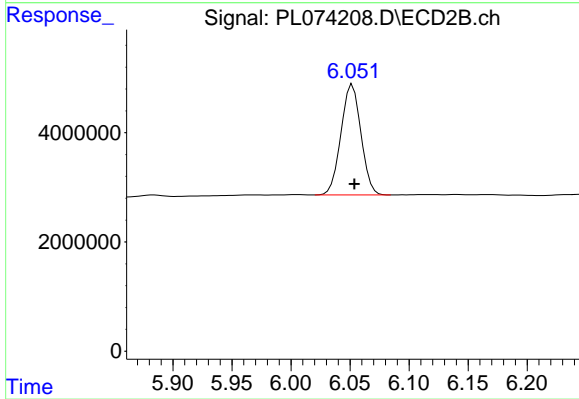
Reviewed By :Abdul Mirza 04/22/2022
 Supervised By :mohammad ahmed 04/22/2022



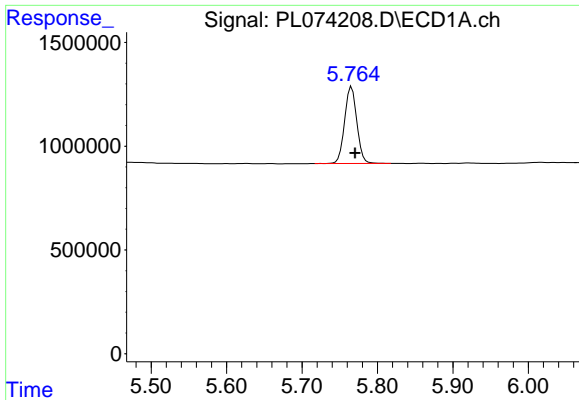
#1 Tetrachloro-m-xylene
 R.T.: 5.489 min
 Delta R.T.: -0.002 min
 Response: 37103296
 Conc: 20.81 ng/ml



#2 alpha-BHC
 R.T.: 5.342 min
 Delta R.T.: -0.004 min
 Response: 4124241
 Conc: 9.83 ng/ml



#2 alpha-BHC
 R.T.: 6.052 min
 Delta R.T.: -0.002 min
 Response: 23870842
 Conc: 9.48 ng/ml

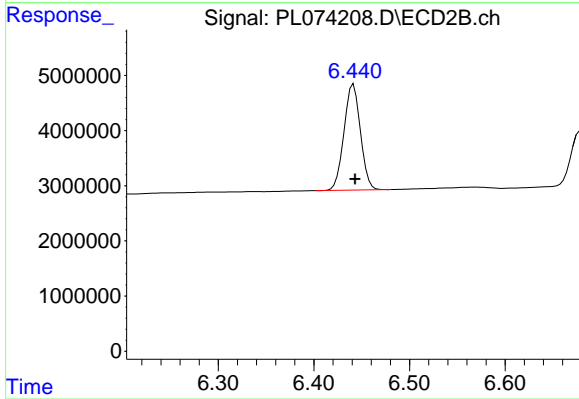


#3 gamma-BHC (Lindane)
 R.T.: 5.766 min
 Delta R.T.: -0.004 min
 Response: 4177431
 Conc: 9.96 ng/ml

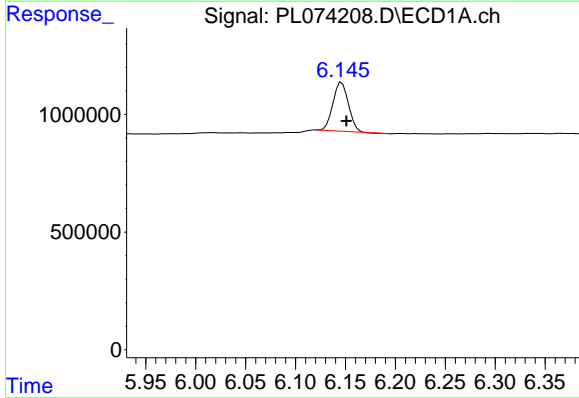
Instrument :
 ECD_L
 ClientSampleId :
 PEM

Manual Integrations
 APPROVED

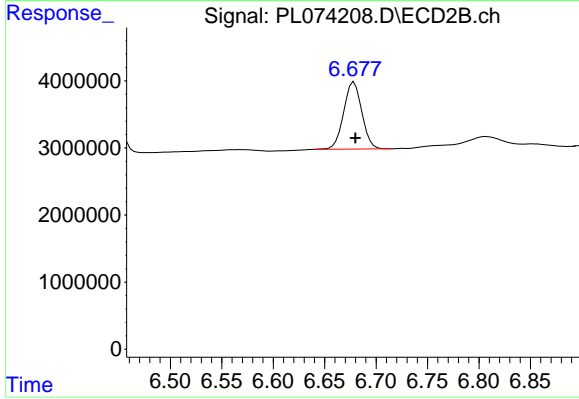
Reviewed By :Abdul Mirza 04/22/2022
 Supervised By :mohammad ahmed 04/22/2022



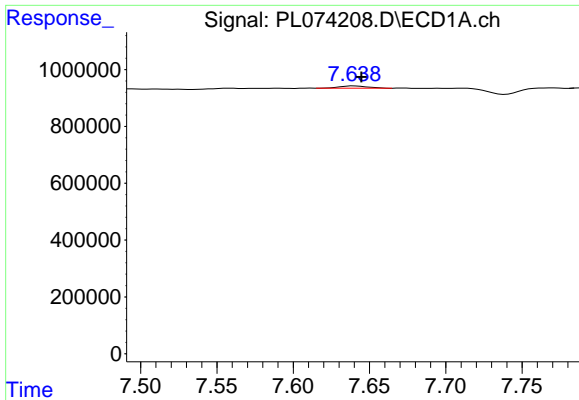
#3 gamma-BHC (Lindane)
 R.T.: 6.441 min
 Delta R.T.: -0.002 min
 Response: 23056417
 Conc: 9.74 ng/ml



#6 beta-BHC
 R.T.: 6.146 min
 Delta R.T.: -0.005 min
 Response: 2248305
 Conc: 11.00 ng/ml



#6 beta-BHC
 R.T.: 6.679 min
 Delta R.T.: -0.001 min
 Response: 12307697
 Conc: 10.92 ng/ml



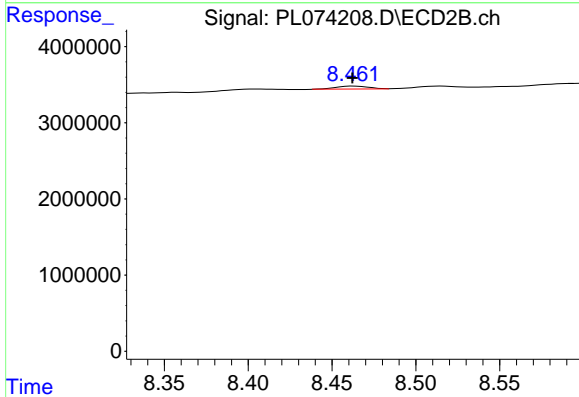
#12 4,4'-DDE

R.T.: 7.640 min
 Delta R.T.: -0.005 min
 Response: 100825
 Conc: 0.28 ng/ml

Instrument :
 ECD_L
 ClientSampleId :
 PEM

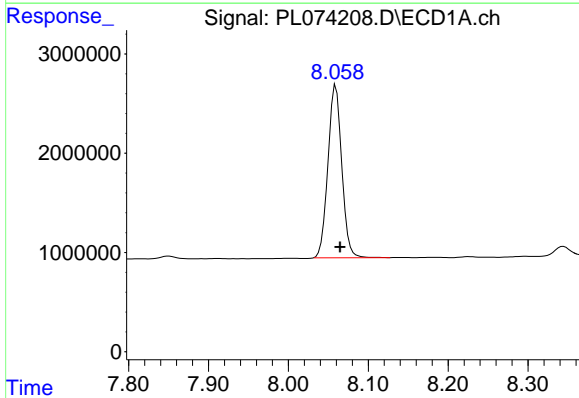
Manual Integrations
 APPROVED

Reviewed By :Abdul Mirza 04/22/2022
 Supervised By :mohammad ahmed 04/22/2022



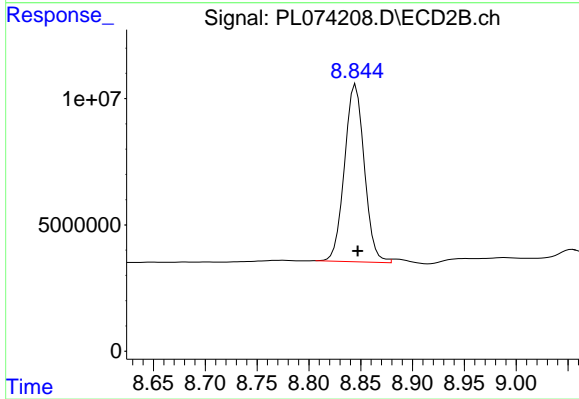
#12 4,4'-DDE

R.T.: 8.461 min
 Delta R.T.: -0.001 min
 Response: 514632
 Conc: 0.26 ng/ml m



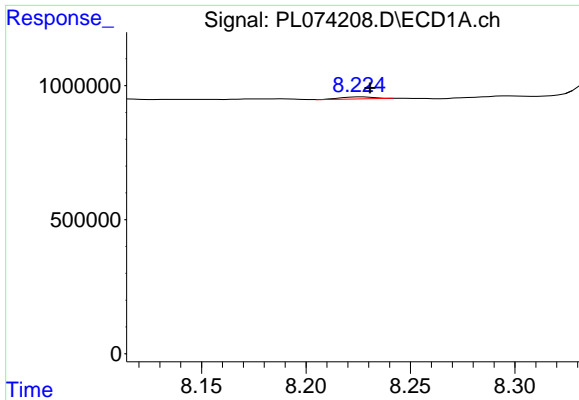
#14 Endrin

R.T.: 8.059 min
 Delta R.T.: -0.005 min
 Response: 20900988
 Conc: 51.45 ng/ml



#14 Endrin

R.T.: 8.845 min
 Delta R.T.: -0.002 min
 Response: 93438383
 Conc: 55.17 ng/ml



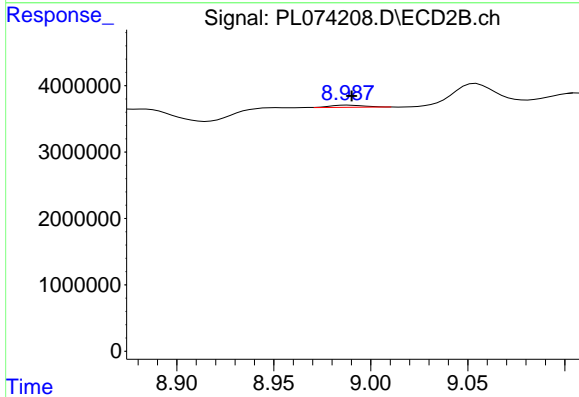
#16 4,4'-DDD

R.T.: 8.224 min
 Delta R.T.: -0.007 min
 Response: 86464
 Conc: 0.27 ng/ml

Instrument :
 ECD_L
 ClientSampleId :
 PEM

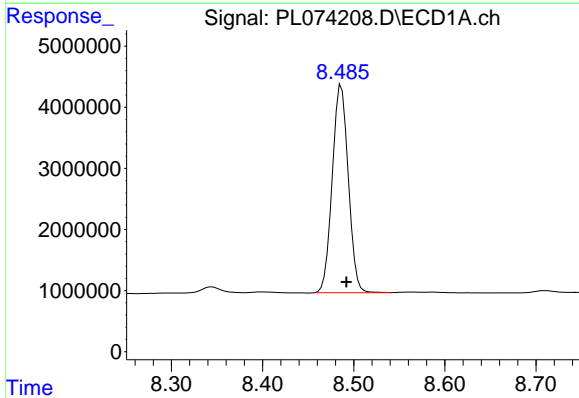
Manual Integrations
 APPROVED

Reviewed By :Abdul Mirza 04/22/2022
 Supervised By :mohammad ahmed 04/22/2022



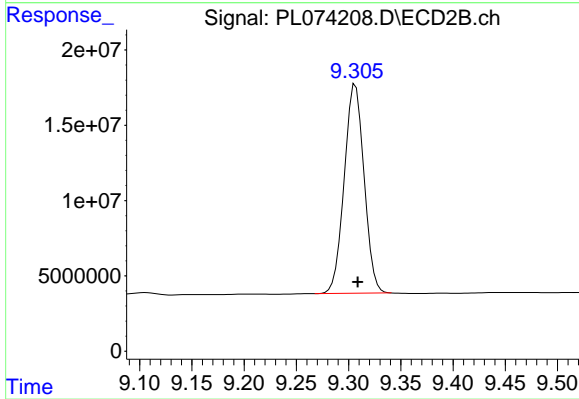
#16 4,4'-DDD

R.T.: 8.987 min
 Delta R.T.: -0.003 min
 Response: 397238
 Conc: 0.26 ng/ml m



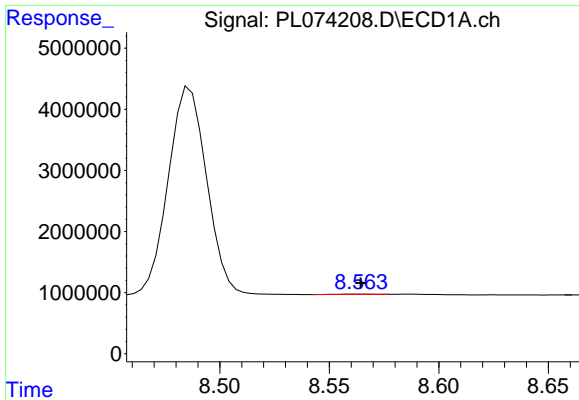
#17 4,4'-DDT

R.T.: 8.486 min
 Delta R.T.: -0.006 min
 Response: 41614047
 Conc: 112.58 ng/ml



#17 4,4'-DDT

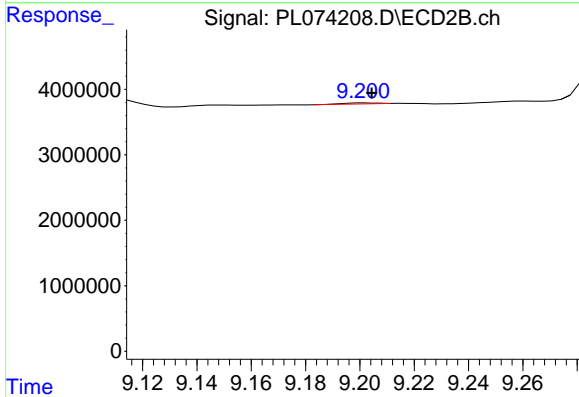
R.T.: 9.307 min
 Delta R.T.: -0.002 min
 Response: 183168849
 Conc: 103.33 ng/ml



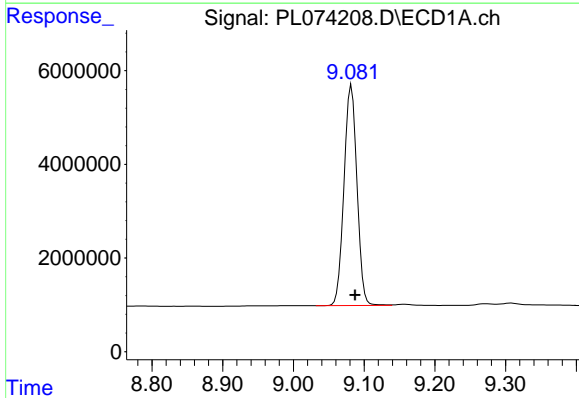
#18 Endrin aldehyde
 R.T.: 8.563 min
 Delta R.T.: -0.001 min
 Response: 56449
 Conc: 0.17 ng/ml

Instrument :
 ECD_L
 ClientSampleId :
 PEM

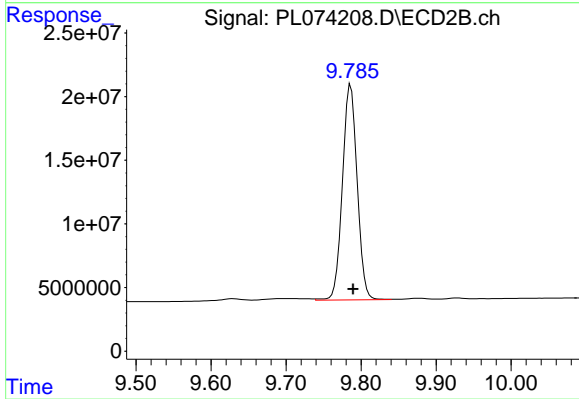
Manual Integrations
APPROVED
 Reviewed By :Abdul Mirza 04/22/2022
 Supervised By :mohammad ahmed 04/22/2022



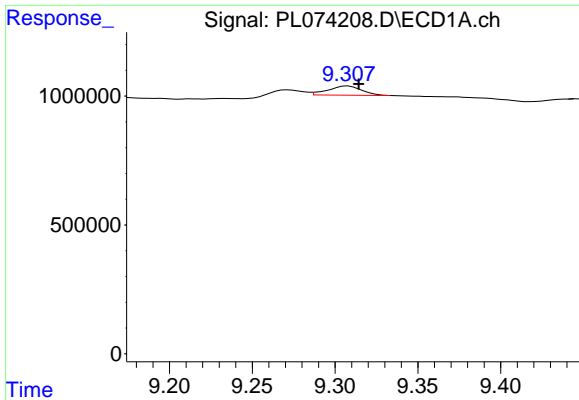
#18 Endrin aldehyde
 R.T.: 9.200 min
 Delta R.T.: -0.004 min
 Response: 146624
 Conc: 0.11 ng/ml m



#20 Methoxychlor
 R.T.: 9.082 min
 Delta R.T.: -0.005 min
 Response: 60056912
 Conc: 241.90 ng/ml



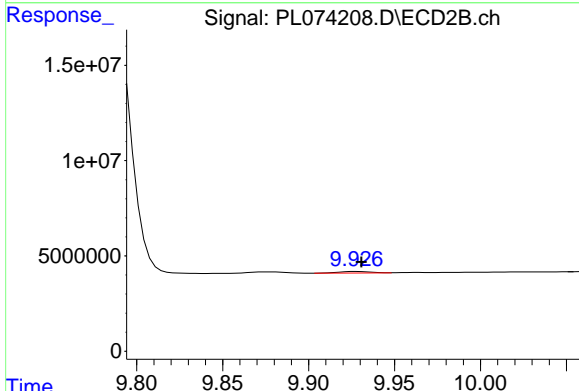
#20 Methoxychlor
 R.T.: 9.786 min
 Delta R.T.: -0.003 min
 Response: 231361282
 Conc: 240.54 ng/ml



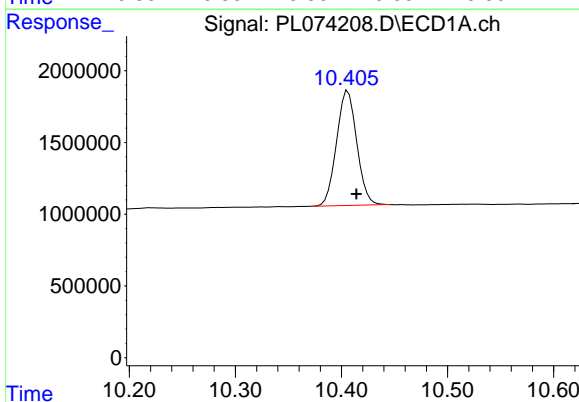
#21 Endrin ketone
 R.T.: 9.307 min
 Delta R.T.: -0.008 min
 Response: 497944
 Conc: 1.02 ng/ml

Instrument : ECD_L
 ClientSampleId : PEM

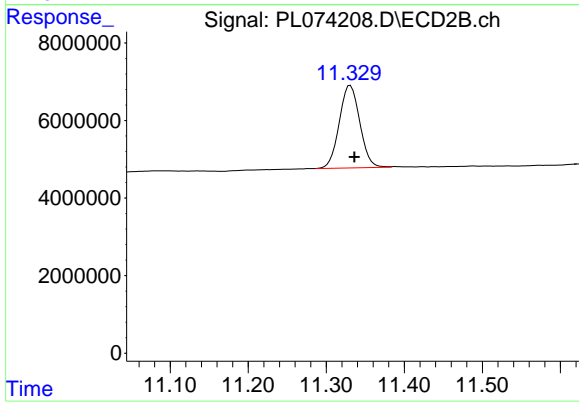
Manual Integrations
APPROVED
 Reviewed By :Abdul Mirza 04/22/2022
 Supervised By :mohammad ahmed 04/22/2022



#21 Endrin ketone
 R.T.: 9.928 min
 Delta R.T.: -0.003 min
 Response: 1059030
 Conc: 0.61 ng/ml



#28 Decachlorobiphenyl
 R.T.: 10.405 min
 Delta R.T.: -0.009 min
 Response: 10595016
 Conc: 20.37 ng/ml m



#28 Decachlorobiphenyl
 R.T.: 11.331 min
 Delta R.T.: -0.005 min
 Response: 38812368
 Conc: 21.97 ng/ml