

Data Path : Z:\pestpcbsrv\HPCHEM1\ECD_L\Data\PL042022\
 Data File : PL074217.D
 Signal(s) : Signal #1: ECD1A.ch Signal #2: ECD2B.ch
 Acq On : 20 Apr 2022 19:34
 Operator : AR\AJ
 Sample : PSTDCCC050
 Misc :
 ALS Vial : 4 Sample Multiplier: 1

Instrument :

ECD_L

ClientSampleId :

PSTDCCC050

Manual Integrations

APPROVED

Reviewed By :Abdul Mirza 04/22/2022

Supervised By :mohammad ahmed 04/22/2022

Integration File signal 1: autoint1.e
 Integration File signal 2: autoint2.e
 Quant Time: Apr 21 02:55:47 2022
 Quant Method : Z:\pestpcbsrv\HPCHEM1\ECD_L\methods\PL040822.M
 Quant Title : GC Extractables
 QLast Update : Thu Apr 14 09:29:23 2022
 Response via : Initial Calibration
 Integrator: ChemStation

Volume Inj. : 1 µl
 Signal #1 Phase : ZB-MR2 Signal #2 Phase: ZB-MR1
 Signal #1 Info : 30M x 0.32mm x0.2 Signal #2 Info : 30M x 0.32mm x0.5µm

Compound	RT#1	RT#2	Resp#1	Resp#2	ng/ml	ng/ml

System Monitoring Compounds						
1) SA Tetrachlo...	4.636	5.489	16718396	92760229	51.742	52.026
28) SA Decachlor...	10.405	11.330	24372728	92210275	46.868m	52.205
Target Compounds						
2) A alpha-BHC	5.343	6.052	22263120	136.1E6	53.050	54.051
3) MA gamma-BHC...	5.767	6.441	22072890	127.4E6	52.630	53.821
4) MA Heptachlor	6.178	7.100	24197655	138.9E6	53.718	53.233
5) MB Aldrin	6.503	7.468	21864821	127.3E6	52.680	54.183
6) B beta-BHC	6.147	6.678	10929741	58442548	53.491	51.856
7) B delta-BHC	6.409	6.945	22240833	128.0E6	53.764	52.425
8) B Heptachlo...	7.080	7.924	22575163	116.1E6	52.630	51.575
9) A Endosulfan I	7.482	8.325	21657857	105.3E6	52.808	53.494
10) B gamma-Chl...	7.357	8.192	23007356	117.1E6	52.458	52.514
11) B alpha-Chl...	7.426	8.275	23279260	114.5E6	52.695	53.210
12) B 4,4'-DDE	7.640	8.460	19506415	107.9E6	53.469	54.198
13) MA Dieldrin	7.769	8.610	21809635	106.9E6	50.771	53.334
14) MA Endrin	8.060	8.844	20796948	91364280	51.195	53.945
15) B Endosulfa...	8.370	9.068	20473308	84260417	49.673	48.503
16) A 4,4'-DDD	8.225	8.987	17103987	83371429	52.966	54.187
17) MA 4,4'-DDT	8.487	9.306	19661902	91217009	53.192	51.457
18) B Endrin al...	8.559	9.200	16338473	65506059	50.497	50.716
19) B Endosulfa...	8.790	9.438	21705981	84437650	50.831	50.734
20) A Methoxychlor	9.082	9.786	12119320	45358066	48.815	47.157
21) B Endrin ke...	9.308	9.926	25110967	89540540	51.399	51.729
22) Mirex	9.495	10.403	23356683	70030660	50.078	50.842

(f)=RT Delta > 1/2 Window (#)=Amounts differ by > 25% (m)=manual int.

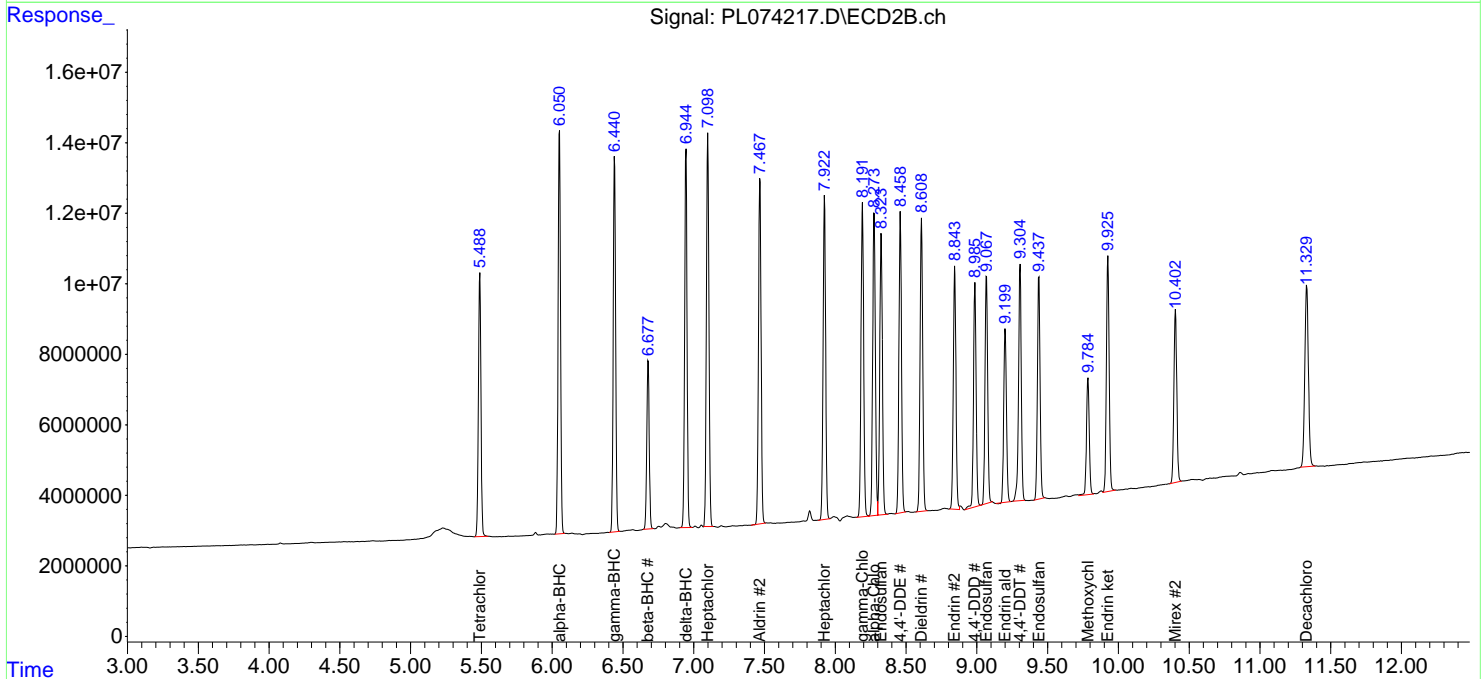
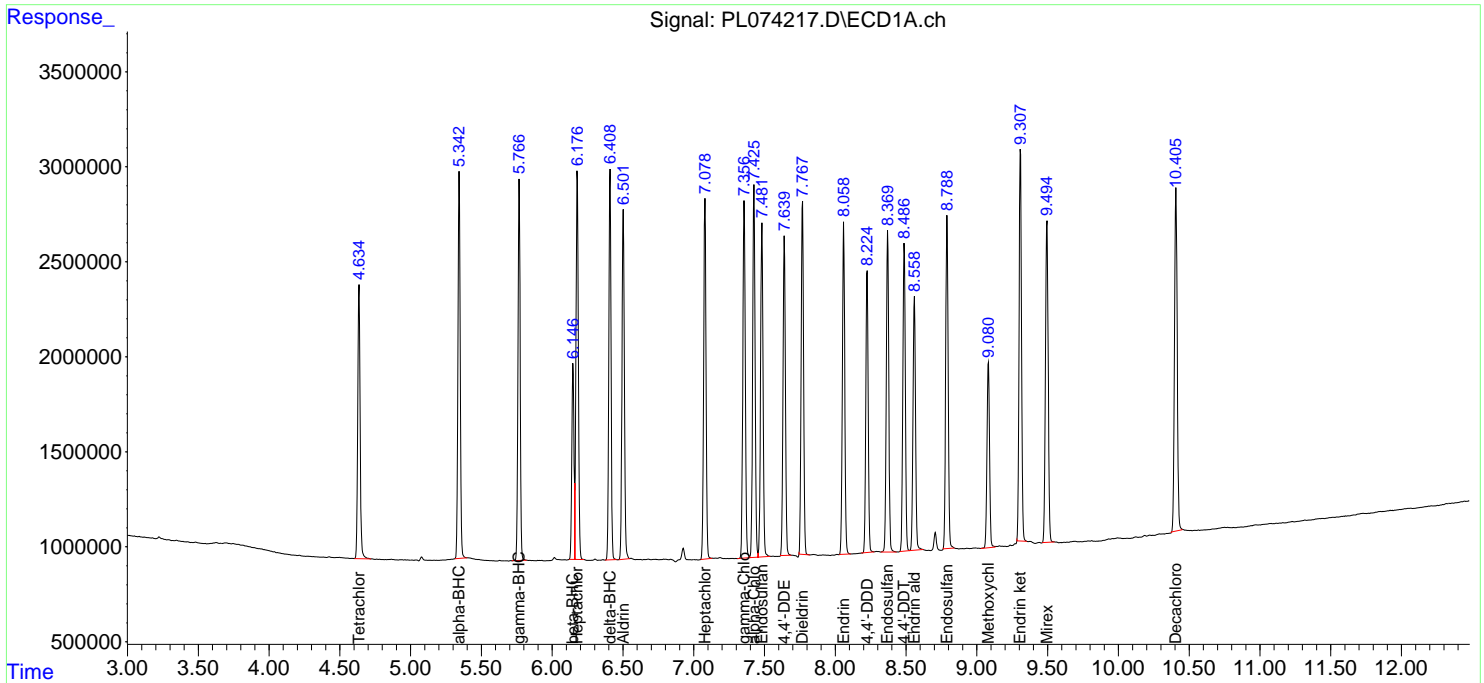
Data Path : Z:\pestpcbsrv\HPCHEM1\ECD_L\Data\PL042022\
 Data File : PL074217.D
 Signal(s) : Signal #1: ECD1A.ch Signal #2: ECD2B.ch
 Acq On : 20 Apr 2022 19:34
 Operator : AR\AJ
 Sample : PSTDCCC050
 Misc :
 ALS Vial : 4 Sample Multiplier: 1

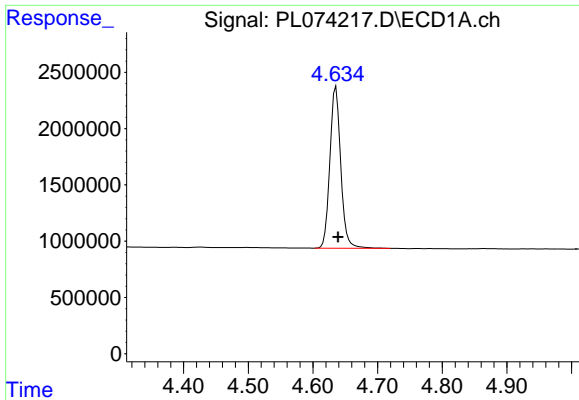
Instrument :
 ECD_L
ClientSampleId :
 PSTDCCC050

Manual Integrations
APPROVED
 Reviewed By :Abdul Mirza 04/22/2022
 Supervised By :mohammad ahmed 04/22/2022

Integration File signal 1: autoint1.e
 Integration File signal 2: autoint2.e
 Quant Time: Apr 21 02:55:47 2022
 Quant Method : Z:\pestpcbsrv\HPCHEM1\ECD_L\methods\PL040822.M
 Quant Title : GC Extractables
 QLast Update : Thu Apr 14 09:29:23 2022
 Response via : Initial Calibration
 Integrator: ChemStation

Volume Inj. : 1 µl
 Signal #1 Phase : ZB-MR2 Signal #2 Phase: ZB-MR1
 Signal #1 Info : 30M x 0.32mm x0.2 Signal #2 Info : 30M x 0.32mm x0.5µm





#1 Tetrachloro-m-xylene

R.T.: 4.636 min
 Delta R.T.: -0.003 min
 Response: 16718396
 Conc: 51.74 ng/ml

Instrument :

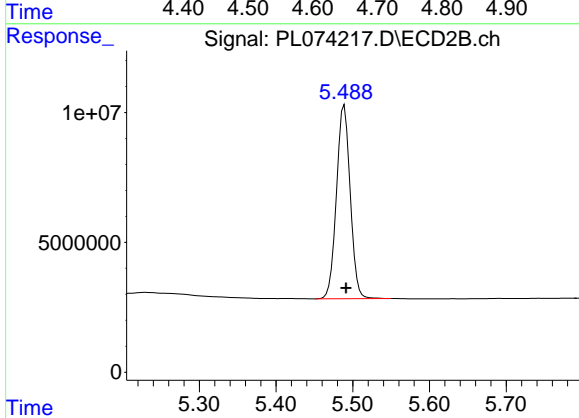
ECD_L

ClientSampleId :

PSTDCCC050

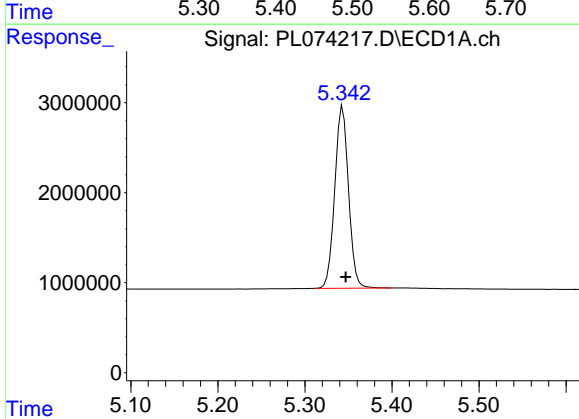
Manual Integrations
 APPROVED

Reviewed By :Abdul Mirza 04/22/2022
 Supervised By :mohammad ahmed 04/22/2022



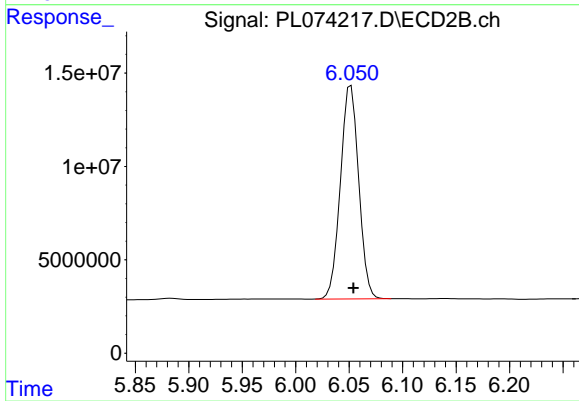
#1 Tetrachloro-m-xylene

R.T.: 5.489 min
 Delta R.T.: -0.002 min
 Response: 92760229
 Conc: 52.03 ng/ml



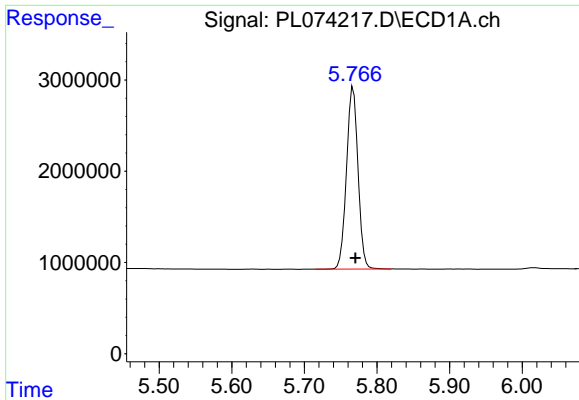
#2 alpha-BHC

R.T.: 5.343 min
 Delta R.T.: -0.003 min
 Response: 22263120
 Conc: 53.05 ng/ml



#2 alpha-BHC

R.T.: 6.052 min
 Delta R.T.: -0.002 min
 Response: 136104076
 Conc: 54.05 ng/ml



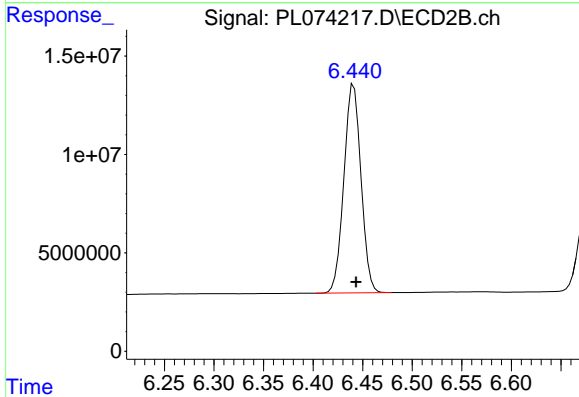
#3 gamma-BHC (Lindane)

R.T.: 5.767 min
 Delta R.T.: -0.003 min
 Response: 22072890
 Conc: 52.63 ng/ml

Instrument :
 ECD_L
 ClientSampleId :
 PSTDCCC050

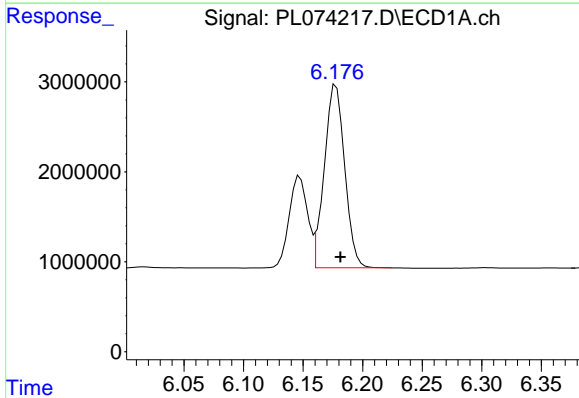
Manual Integrations
 APPROVED

Reviewed By :Abdul Mirza 04/22/2022
 Supervised By :mohammad ahmed 04/22/2022



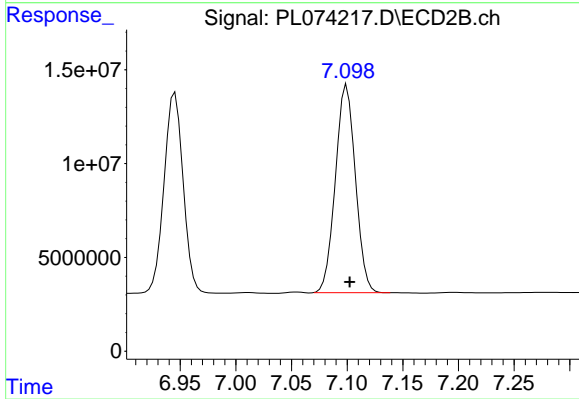
#3 gamma-BHC (Lindane)

R.T.: 6.441 min
 Delta R.T.: -0.002 min
 Response: 127400481
 Conc: 53.82 ng/ml



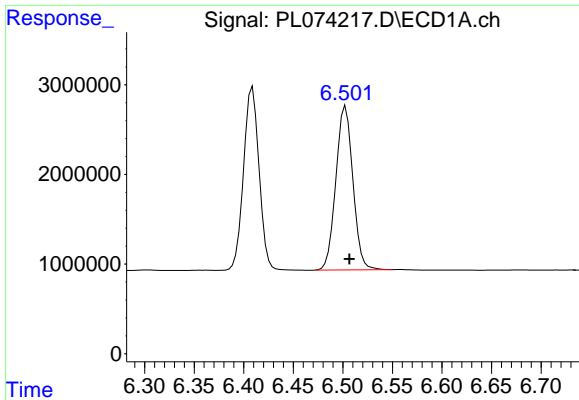
#4 Heptachlor

R.T.: 6.178 min
 Delta R.T.: -0.004 min
 Response: 24197655
 Conc: 53.72 ng/ml



#4 Heptachlor

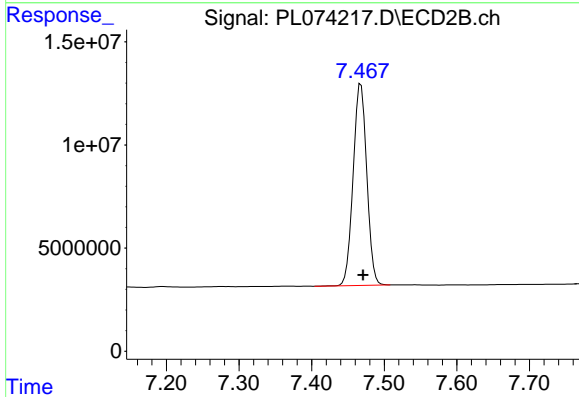
R.T.: 7.100 min
 Delta R.T.: -0.003 min
 Response: 138854129
 Conc: 53.23 ng/ml



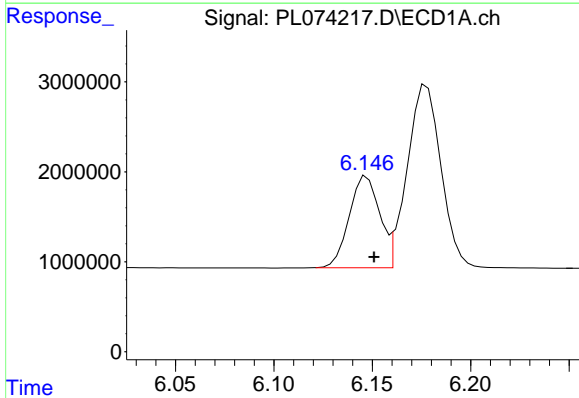
#5 Aldrin
 R.T.: 6.503 min
 Delta R.T.: -0.004 min
 Response: 21864821
 Conc: 52.68 ng/ml

Instrument : ECD_L
 ClientSampleId : PSTDCCC050

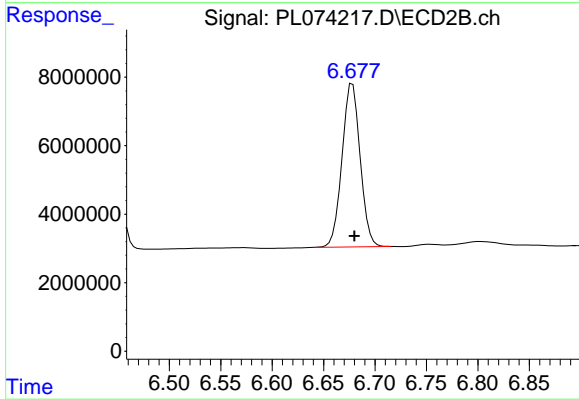
Manual Integrations
APPROVED
 Reviewed By :Abdul Mirza 04/22/2022
 Supervised By :mohammad ahmed 04/22/2022



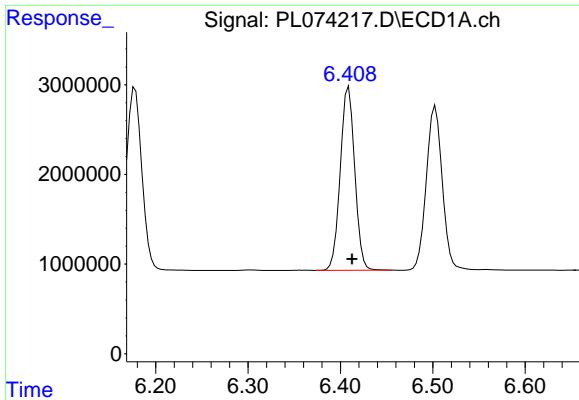
#5 Aldrin
 R.T.: 7.468 min
 Delta R.T.: -0.003 min
 Response: 127254473
 Conc: 54.18 ng/ml



#6 beta-BHC
 R.T.: 6.147 min
 Delta R.T.: -0.004 min
 Response: 10929741
 Conc: 53.49 ng/ml



#6 beta-BHC
 R.T.: 6.678 min
 Delta R.T.: -0.002 min
 Response: 58442548
 Conc: 51.86 ng/ml



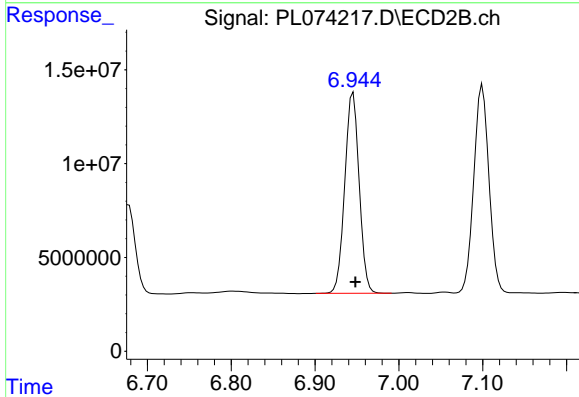
#7 delta-BHC

R.T.: 6.409 min
 Delta R.T.: -0.003 min
 Response: 22240833
 Conc: 53.76 ng/ml

Instrument : ECD_L
 ClientSampleId : PSTDCCC050

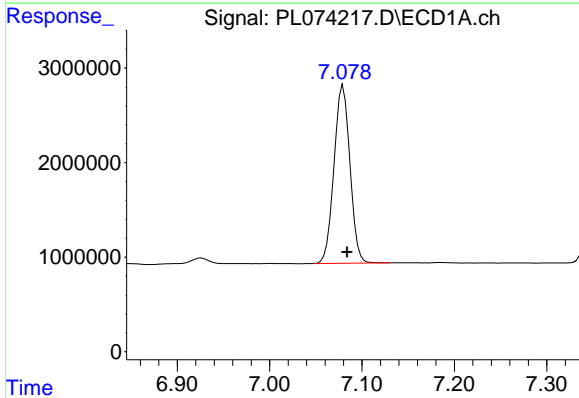
Manual Integrations
 APPROVED

Reviewed By :Abdul Mirza 04/22/2022
 Supervised By :mohammad ahmed 04/22/2022



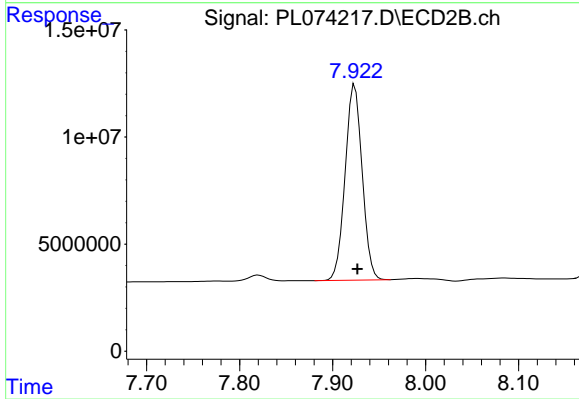
#7 delta-BHC

R.T.: 6.945 min
 Delta R.T.: -0.003 min
 Response: 128035196
 Conc: 52.42 ng/ml



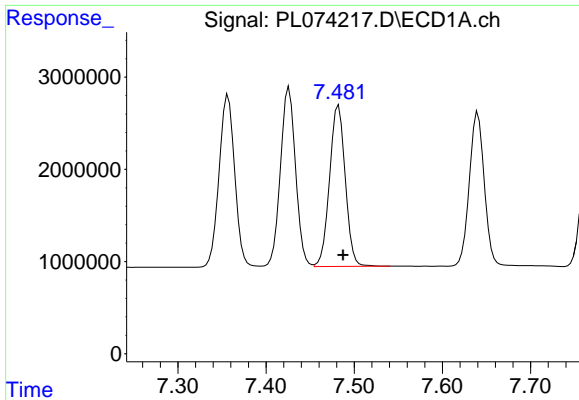
#8 Heptachlor epoxide

R.T.: 7.080 min
 Delta R.T.: -0.004 min
 Response: 22575163
 Conc: 52.63 ng/ml



#8 Heptachlor epoxide

R.T.: 7.924 min
 Delta R.T.: -0.003 min
 Response: 116125103
 Conc: 51.58 ng/ml



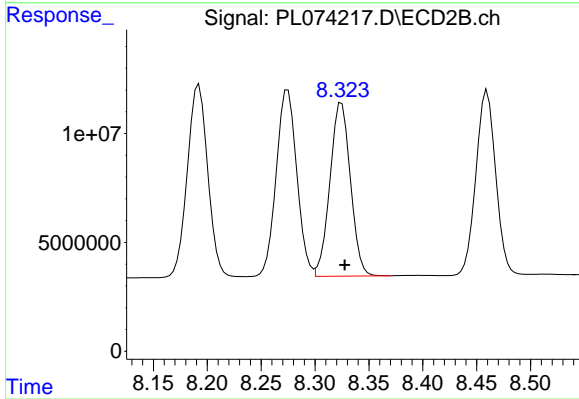
#9 Endosulfan I

R.T.: 7.482 min
 Delta R.T.: -0.005 min
 Response: 21657857
 Conc: 52.81 ng/ml

Instrument :
 ECD_L
 ClientSampleId :
 PSTDCCC050

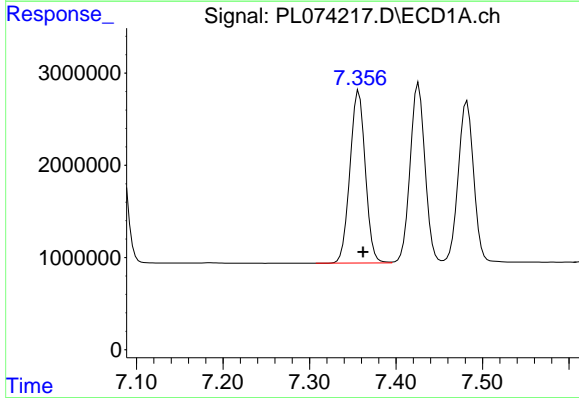
Manual Integrations
 APPROVED

Reviewed By :Abdul Mirza 04/22/2022
 Supervised By :mohammad ahmed 04/22/2022



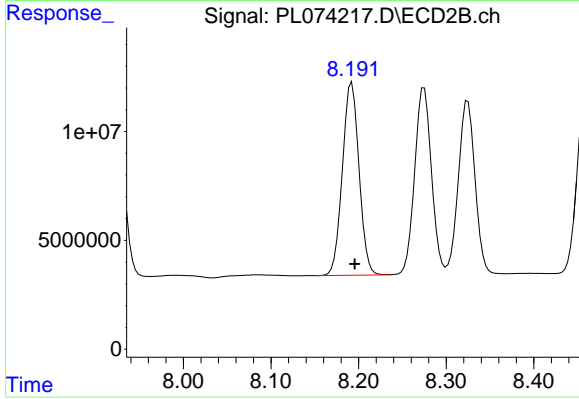
#9 Endosulfan I

R.T.: 8.325 min
 Delta R.T.: -0.003 min
 Response: 105310993
 Conc: 53.49 ng/ml



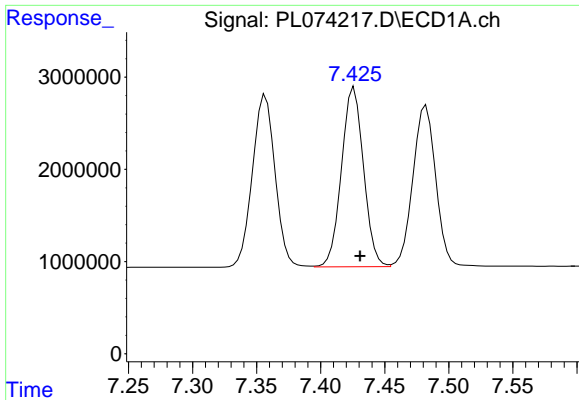
#10 gamma-Chlordane

R.T.: 7.357 min
 Delta R.T.: -0.005 min
 Response: 23007356
 Conc: 52.46 ng/ml



#10 gamma-Chlordane

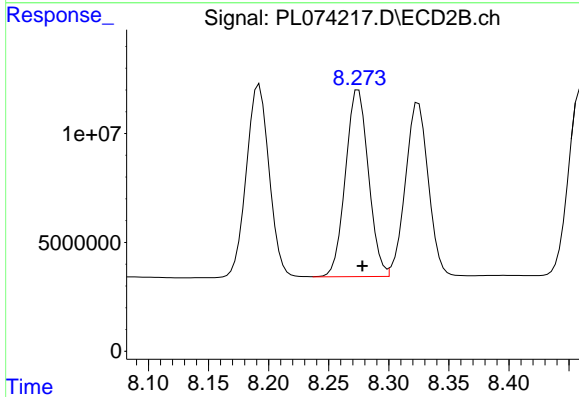
R.T.: 8.192 min
 Delta R.T.: -0.003 min
 Response: 117125582
 Conc: 52.51 ng/ml



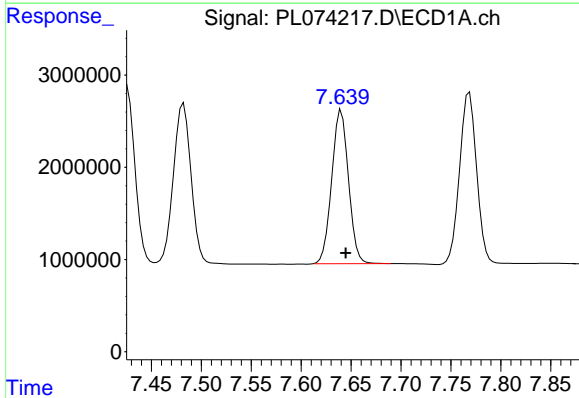
#11 alpha-Chlordane
 R.T.: 7.426 min
 Delta R.T.: -0.005 min
 Response: 23279260
 Conc: 52.69 ng/ml

Instrument : ECD_L
 ClientSampleId : PSTDCCC050

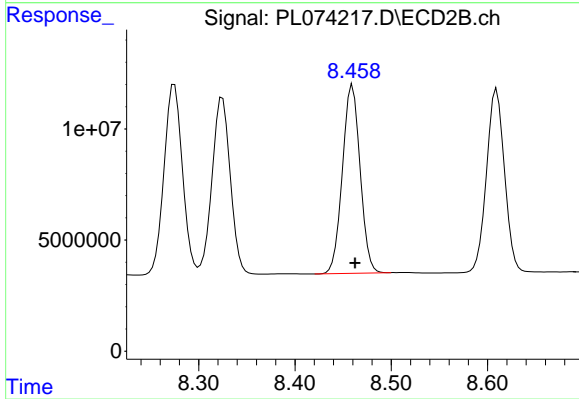
Manual Integrations
APPROVED
 Reviewed By :Abdul Mirza 04/22/2022
 Supervised By :mohammad ahmed 04/22/2022



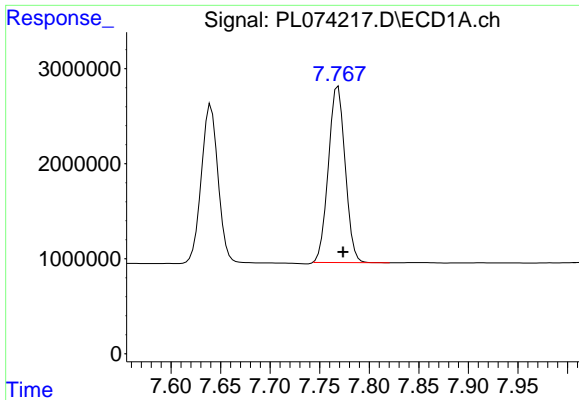
#11 alpha-Chlordane
 R.T.: 8.275 min
 Delta R.T.: -0.003 min
 Response: 114538353
 Conc: 53.21 ng/ml



#12 4,4'-DDE
 R.T.: 7.640 min
 Delta R.T.: -0.004 min
 Response: 19506415
 Conc: 53.47 ng/ml



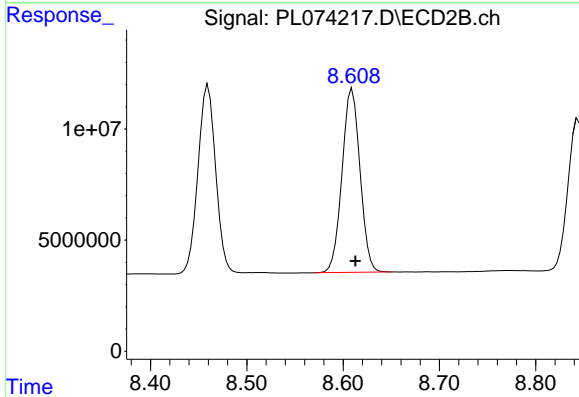
#12 4,4'-DDE
 R.T.: 8.460 min
 Delta R.T.: -0.003 min
 Response: 107945407
 Conc: 54.20 ng/ml



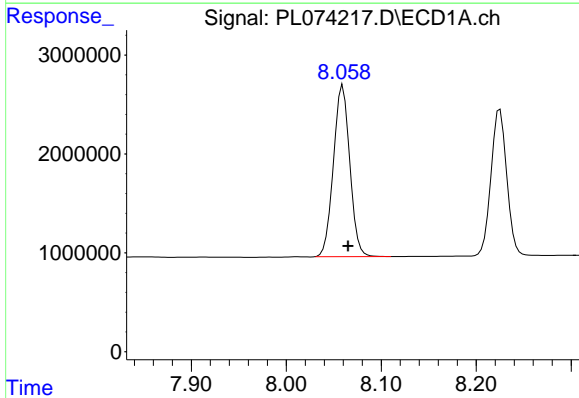
#13 Dieldrin
 R.T.: 7.769 min
 Delta R.T.: -0.005 min
 Response: 21809635
 Conc: 50.77 ng/ml

Instrument : ECD_L
 Client Sample Id : PSTDCCC050

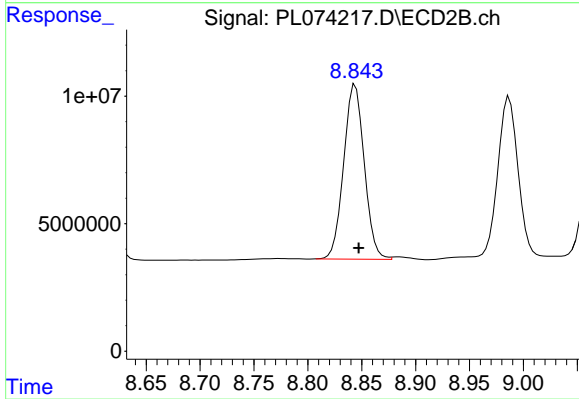
Manual Integrations
APPROVED
 Reviewed By :Abdul Mirza 04/22/2022
 Supervised By :mohammad ahmed 04/22/2022



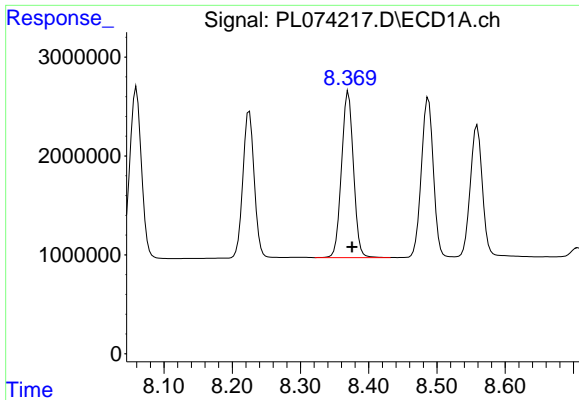
#13 Dieldrin
 R.T.: 8.610 min
 Delta R.T.: -0.003 min
 Response: 106948802
 Conc: 53.33 ng/ml



#14 Endrin
 R.T.: 8.060 min
 Delta R.T.: -0.005 min
 Response: 20796948
 Conc: 51.19 ng/ml



#14 Endrin
 R.T.: 8.844 min
 Delta R.T.: -0.003 min
 Response: 91364280
 Conc: 53.94 ng/ml



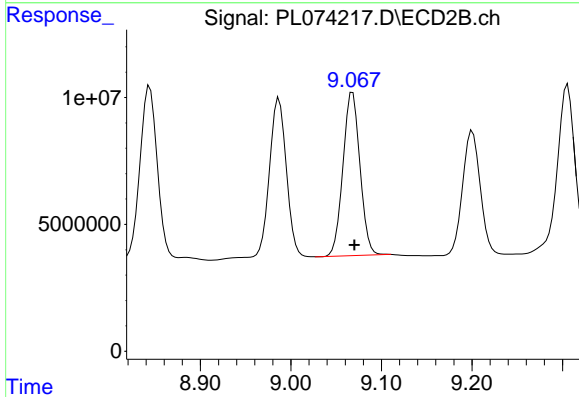
#15 Endosulfan II

R.T.: 8.370 min
 Delta R.T.: -0.005 min
 Response: 20473308
 Conc: 49.67 ng/ml

Instrument :
 ECD_L
 ClientSampleId :
 PSTDCCC050

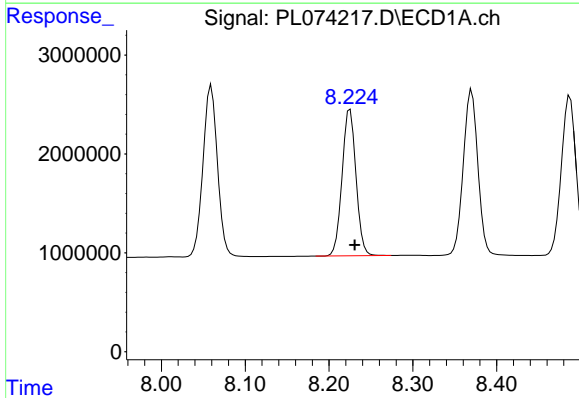
Manual Integrations
 APPROVED

Reviewed By :Abdul Mirza 04/22/2022
 Supervised By :mohammad ahmed 04/22/2022



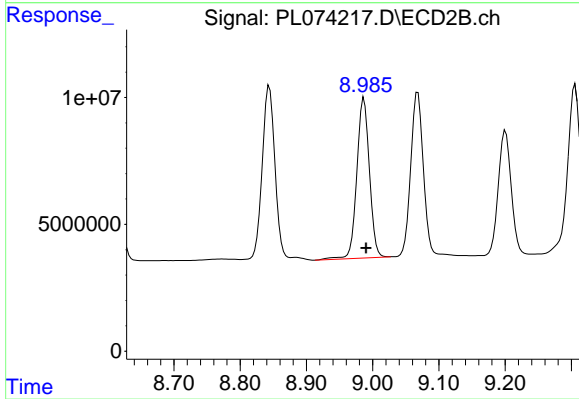
#15 Endosulfan II

R.T.: 9.068 min
 Delta R.T.: -0.002 min
 Response: 84260417
 Conc: 48.50 ng/ml



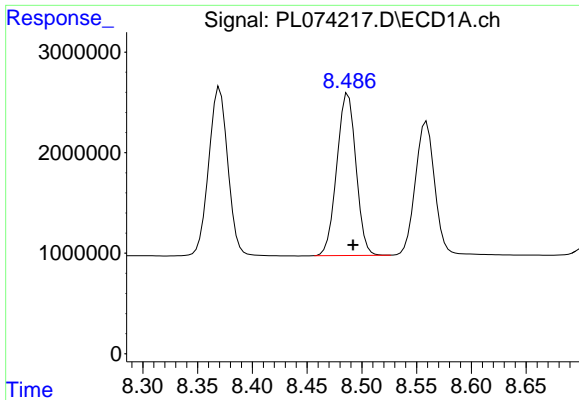
#16 4,4'-DDD

R.T.: 8.225 min
 Delta R.T.: -0.006 min
 Response: 17103987
 Conc: 52.97 ng/ml



#16 4,4'-DDD

R.T.: 8.987 min
 Delta R.T.: -0.003 min
 Response: 83371429
 Conc: 54.19 ng/ml



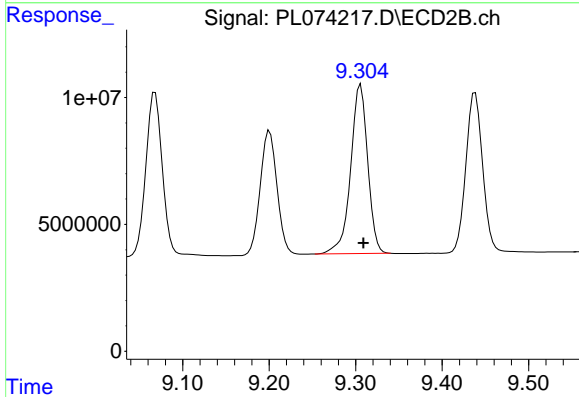
#17 4,4'-DDT

R.T.: 8.487 min
 Delta R.T.: -0.005 min
 Response: 19661902
 Conc: 53.19 ng/ml

Instrument :
 ECD_L
 ClientSampleId :
 PSTDCCC050

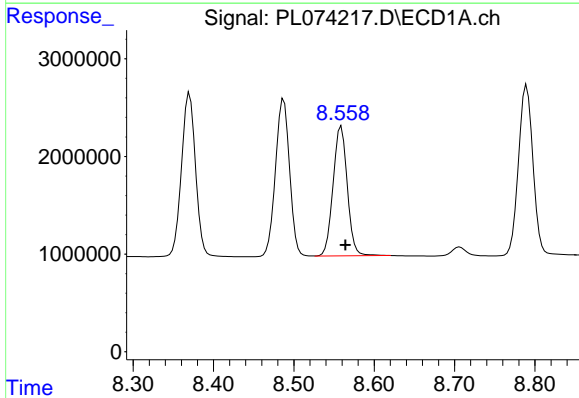
Manual Integrations
 APPROVED

Reviewed By :Abdul Mirza 04/22/2022
 Supervised By :mohammad ahmed 04/22/2022



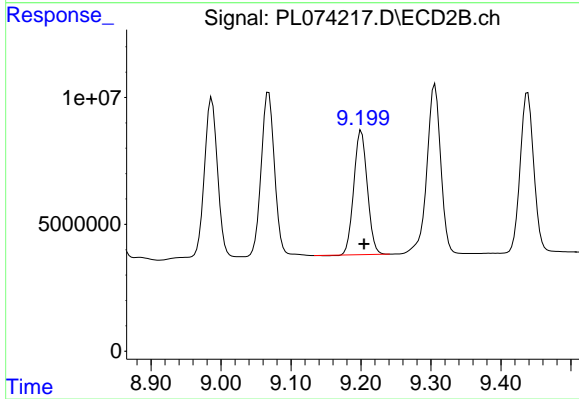
#17 4,4'-DDT

R.T.: 9.306 min
 Delta R.T.: -0.003 min
 Response: 91217009
 Conc: 51.46 ng/ml



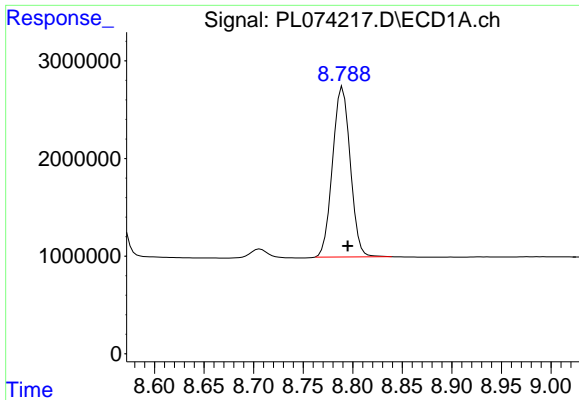
#18 Endrin aldehyde

R.T.: 8.559 min
 Delta R.T.: -0.005 min
 Response: 16338473
 Conc: 50.50 ng/ml



#18 Endrin aldehyde

R.T.: 9.200 min
 Delta R.T.: -0.004 min
 Response: 65506059
 Conc: 50.72 ng/ml

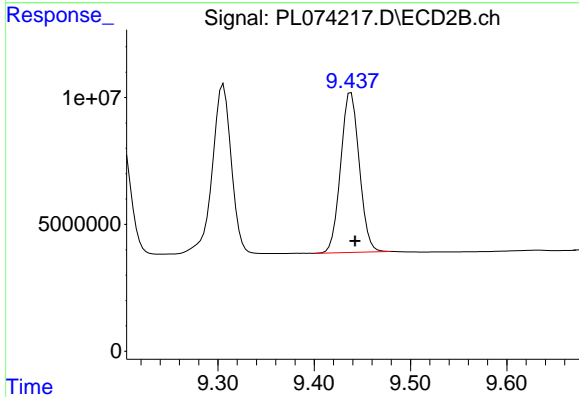


#19 Endosulfan Sulfate
 R.T.: 8.790 min
 Delta R.T.: -0.005 min
 Response: 21705981
 Conc: 50.83 ng/ml

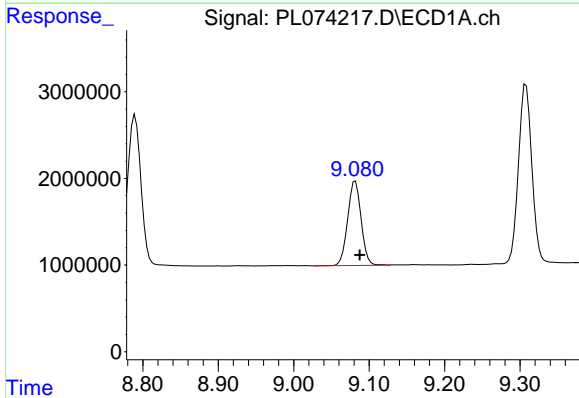
Instrument :
 ECD_L
 ClientSampleId :
 PSTDCCC050

Manual Integrations
 APPROVED

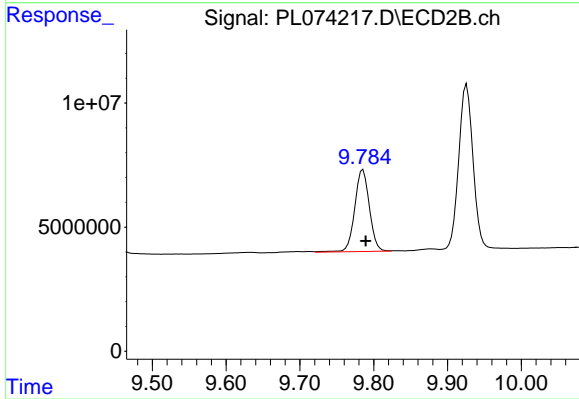
Reviewed By :Abdul Mirza 04/22/2022
 Supervised By :mohammad ahmed 04/22/2022



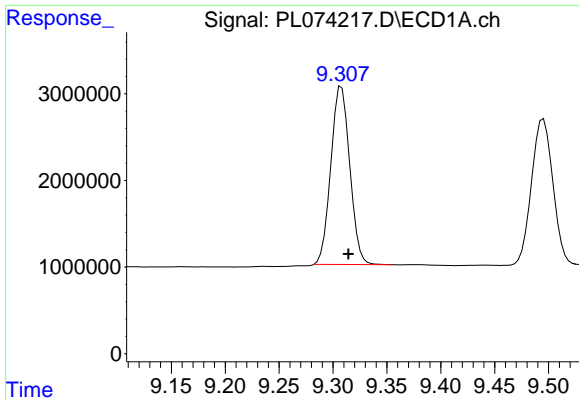
#19 Endosulfan Sulfate
 R.T.: 9.438 min
 Delta R.T.: -0.004 min
 Response: 84437650
 Conc: 50.73 ng/ml



#20 Methoxychlor
 R.T.: 9.082 min
 Delta R.T.: -0.006 min
 Response: 12119320
 Conc: 48.82 ng/ml



#20 Methoxychlor
 R.T.: 9.786 min
 Delta R.T.: -0.004 min
 Response: 45358066
 Conc: 47.16 ng/ml



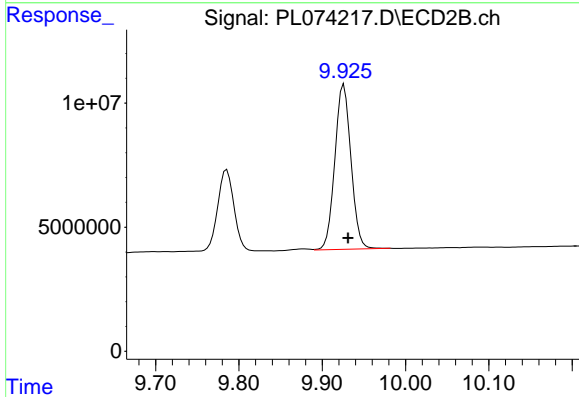
#21 Endrin ketone

R.T.: 9.308 min
 Delta R.T.: -0.006 min
 Response: 25110967
 Conc: 51.40 ng/ml

Instrument :
 ECD_L
 ClientSampleId :
 PSTDCCC050

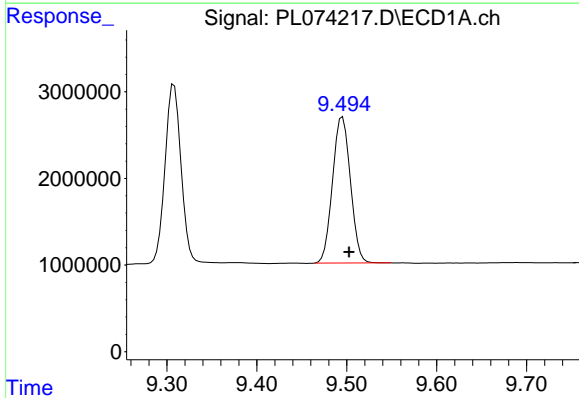
Manual Integrations
 APPROVED

Reviewed By :Abdul Mirza 04/22/2022
 Supervised By :mohammad ahmed 04/22/2022



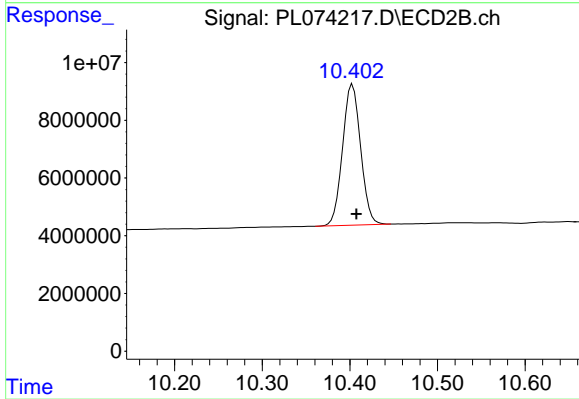
#21 Endrin ketone

R.T.: 9.926 min
 Delta R.T.: -0.005 min
 Response: 89540540
 Conc: 51.73 ng/ml



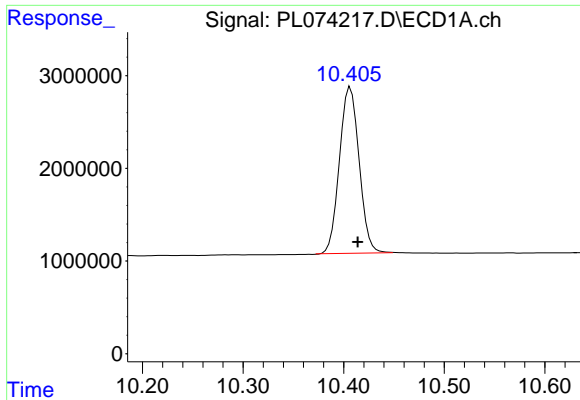
#22 Mirex

R.T.: 9.495 min
 Delta R.T.: -0.007 min
 Response: 23356683
 Conc: 50.08 ng/ml



#22 Mirex

R.T.: 10.403 min
 Delta R.T.: -0.004 min
 Response: 70030660
 Conc: 50.84 ng/ml



#28 Decachlorobiphenyl

R.T.: 10.405 min
Delta R.T.: -0.009 min
Response: 24372728
Conc: 46.87 ng/ml

Instrument :

ECD_L

ClientSampleId :

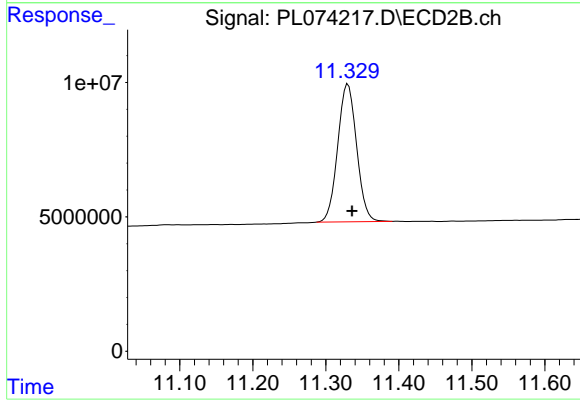
PSTDCCC050

Manual Integrations

APPROVED

Reviewed By :Abdul Mirza 04/22/2022

Supervised By :mohammad ahmed 04/22/2022



#28 Decachlorobiphenyl

R.T.: 11.330 min
Delta R.T.: -0.006 min
Response: 92210275
Conc: 52.21 ng/ml