

Data Path : Z:\pestpcbsrv\HPCHEM1\ECD_L\Data\PL042022\
 Data File : PL074238.D
 Signal(s) : Signal #1: ECD1A.ch Signal #2: ECD2B.ch
 Acq On : 21 Apr 2022 01:19
 Operator : AR\AJ
 Sample : PB144226TB
 Misc :
 ALS Vial : 28 Sample Multiplier: 1

Instrument :
 ECD_L
ClientSampleId :
 PB144226TB

Manual Integrations
APPROVED

Reviewed By :Abdul Mirza 04/22/2022
 Supervised By :mohammad ahmed 04/22/2022

Integration File signal 1: autoint1.e
 Integration File signal 2: autoint2.e
 Quant Time: Apr 21 03:03:33 2022
 Quant Method : Z:\pestpcbsrv\HPCHEM1\ECD_L\methods\PL040822.M
 Quant Title : GC Extractables
 QLast Update : Thu Apr 14 09:29:23 2022
 Response via : Initial Calibration
 Integrator: ChemStation

Volume Inj. : 1 µl
 Signal #1 Phase : ZB-MR2 Signal #2 Phase: ZB-MR1
 Signal #1 Info : 30M x 0.32mm x0.2 Signal #2 Info : 30M x 0.32mm x0.5µm

Compound	RT#1	RT#2	Resp#1	Resp#2	ng/ml	ng/ml

System Monitoring Compounds						
1) SA Tetrachlo...	4.635	5.489	6255564	33724990	19.360	18.915
2) SA Decachlor...	10.403	11.329	9658491	35914311	18.573m	20.333

Target Compounds

(f)=RT Delta > 1/2 Window (#)=Amounts differ by > 25% (m)=manual int.

Data Path : Z:\pestpcbsrv\HPCHEM1\ECD_L\Data\PL042022\
 Data File : PL074238.D
 Signal(s) : Signal #1: ECD1A.ch Signal #2: ECD2B.ch
 Acq On : 21 Apr 2022 01:19
 Operator : AR\AJ
 Sample : PB144226TB
 Misc :
 ALS Vial : 28 Sample Multiplier: 1

Instrument :

ECD_L

ClientSampleId :

PB144226TB

Manual Integrations

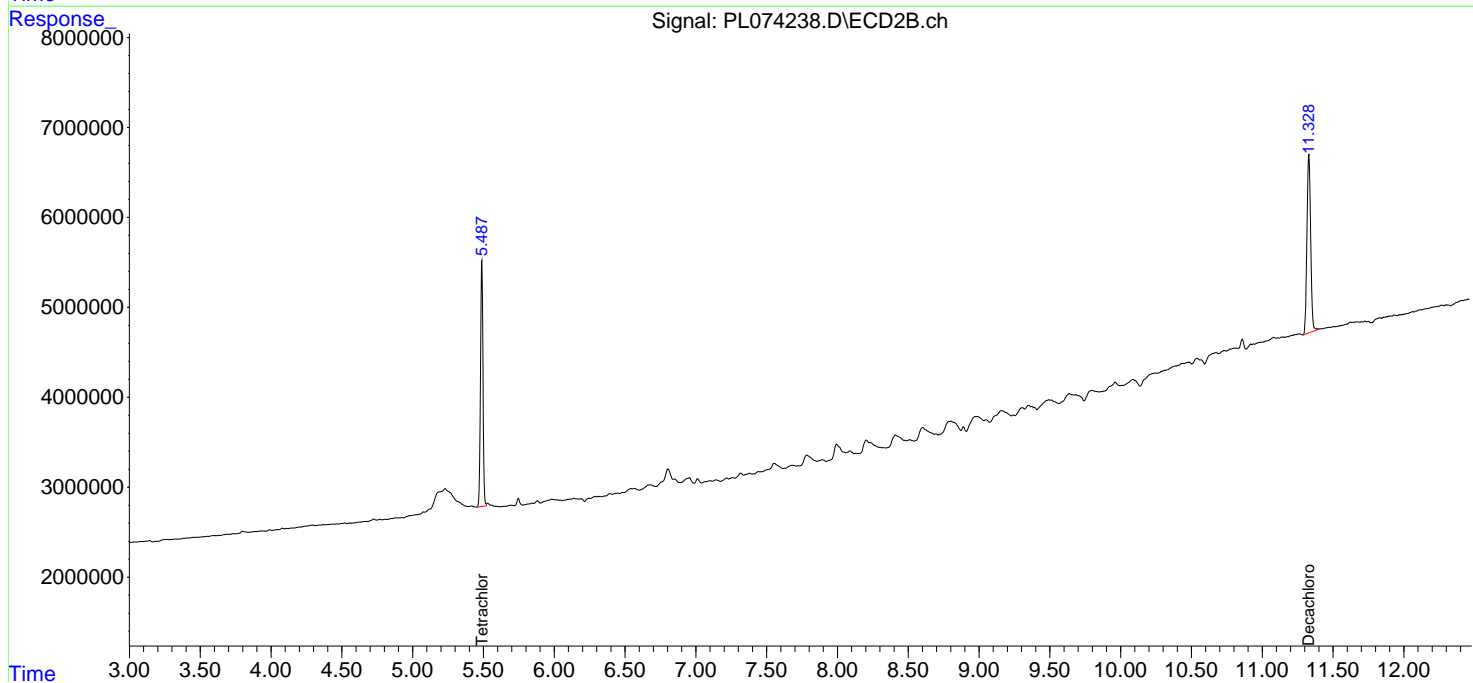
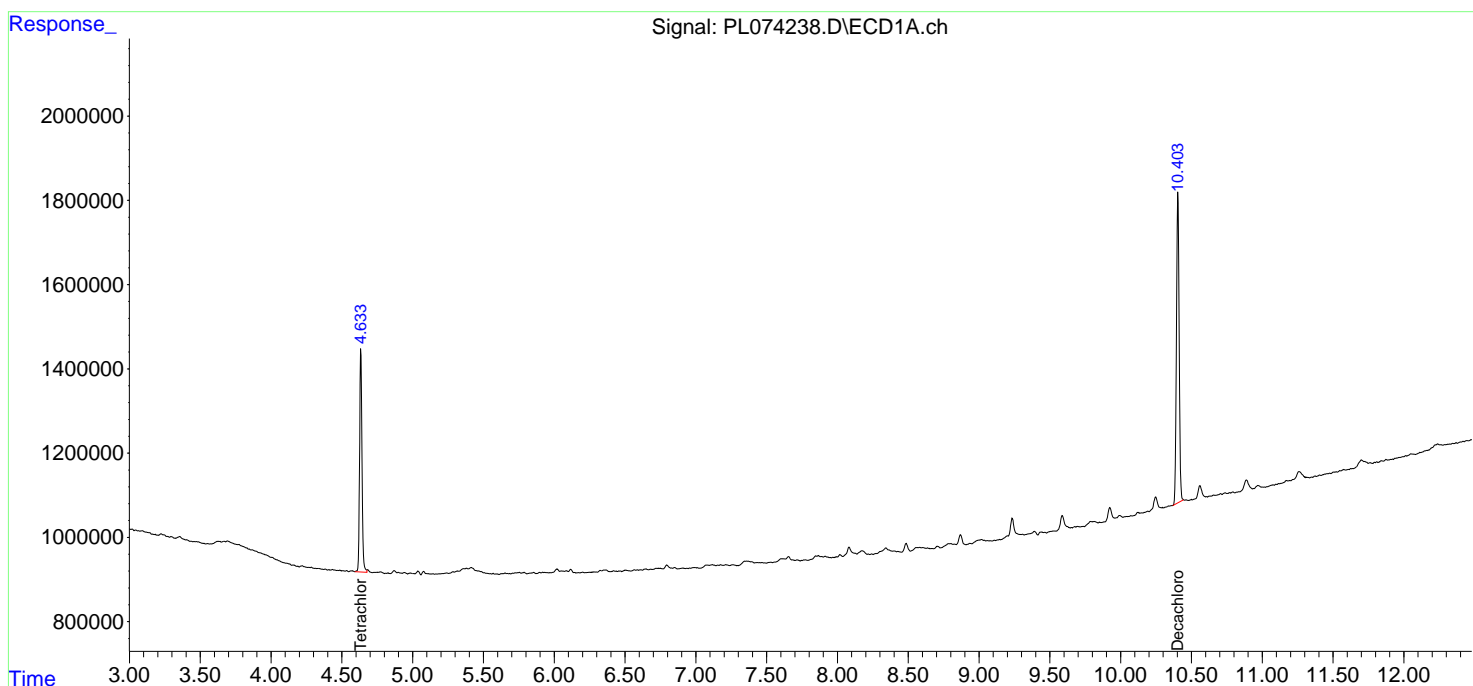
APPROVED

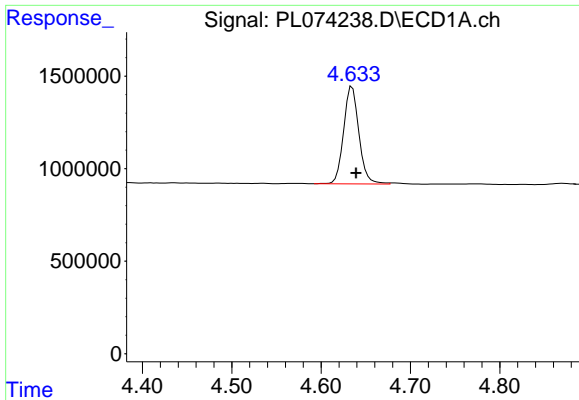
Reviewed By :Abdul Mirza 04/22/2022

Supervised By :mohammad ahmed 04/22/2022

Integration File signal 1: autoint1.e
 Integration File signal 2: autoint2.e
 Quant Time: Apr 21 03:03:33 2022
 Quant Method : Z:\pestpcbsrv\HPCHEM1\ECD_L\methods\PL040822.M
 Quant Title : GC Extractables
 QLast Update : Thu Apr 14 09:29:23 2022
 Response via : Initial Calibration
 Integrator: ChemStation

Volume Inj. : 1 µl
 Signal #1 Phase : ZB-MR2 Signal #2 Phase: ZB-MR1
 Signal #1 Info : 30M x 0.32mm x0.2 Signal #2 Info : 30M x 0.32mm x0.5µm



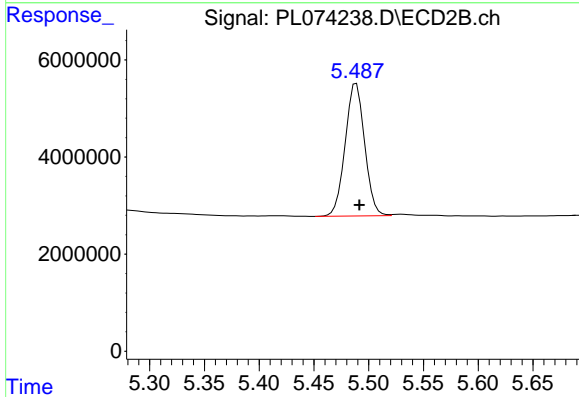


#1 Tetrachloro-m-xylene
 R.T.: 4.635 min
 Delta R.T.: -0.004 min
 Response: 6255564
 Conc: 19.36 ng/ml

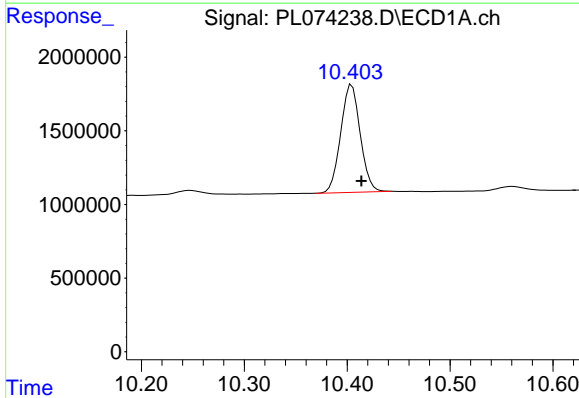
Instrument :
 ECD_L
 ClientSampleId :
 PB144226TB

Manual Integrations
 APPROVED

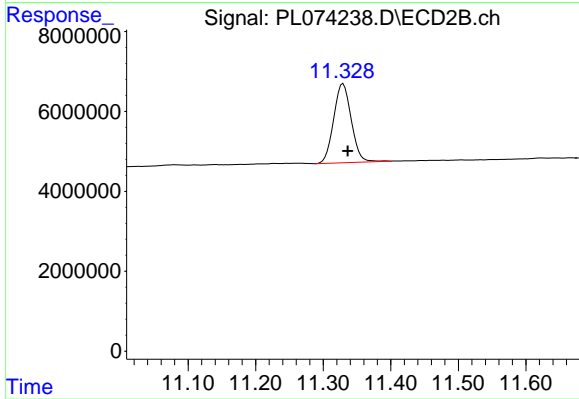
Reviewed By :Abdul Mirza 04/22/2022
 Supervised By :mohammad ahmed 04/22/2022



#1 Tetrachloro-m-xylene
 R.T.: 5.489 min
 Delta R.T.: -0.003 min
 Response: 33724990
 Conc: 18.92 ng/ml



#28 Decachlorobiphenyl
 R.T.: 10.403 min
 Delta R.T.: -0.011 min
 Response: 9658491
 Conc: 18.57 ng/ml m



#28 Decachlorobiphenyl
 R.T.: 11.329 min
 Delta R.T.: -0.007 min
 Response: 35914311
 Conc: 20.33 ng/ml