

Data Path : Z:\pestpcbsrv\HPCHEM1\ECD\_L\Data\PL042120\  
 Data File : PL058235.D  
 Signal(s) : Signal #1: ECD1A.ch Signal #2: ECD2B.ch  
 Acq On : 21 Apr 2020 15:38  
 Operator : AJ\MA  
 Sample : PB128380BL  
 Misc :  
 ALS Vial : 6 Sample Multiplier: 1

Instrument :  
 ECD\_L  
 ClientSampleId :  
 PB128380BL

Integration File signal 1: autoint1.e  
 Integration File signal 2: autoint2.e  
 Quant Time: Apr 22 00:55:31 2020  
 Quant Method : Z:\pestpcbsrv\HPCHEM1\ECD\_L\methods\PL040320.M  
 Quant Title : GC Extractables  
 QLast Update : Sat Apr 04 06:41:11 2020  
 Response via : Initial Calibration  
 Integrator: ChemStation

Volume Inj. : 1 µl  
 Signal #1 Phase : ZB-MR2 Signal #2 Phase: ZB-MR1  
 Signal #1 Info : 30M x 0.32mm x0.2 Signal #2 Info : 30M x 0.32mm x0.5µm

Compound	RT#1	RT#2	Resp#1	Resp#2	ng/ml	ng/ml
-----						
System Monitoring Compounds						
1) SA Tetrachlo...	3.460	3.956	194.4E6	41757121	19.280	19.242
28) SA Decachlor...	8.208	8.982	191.8E6	42893274	18.610	19.202
Target Compounds						
2) A alpha-BHC	3.889	4.370f	6457162	21093	0.372	0.006 #
4) MA Heptachlor	0.000	5.135	0	8088863	N.D.	2.410 #
10) B gamma-Chl...	5.379f	0.000	2085093	0	0.154	N.D. #
11) B alpha-Chl...	5.452	6.115	3292684	202280	0.247	0.062 #
15) B Endosulfa...	0.000	6.870f	0	1311114	N.D.	0.506 #
16) A 4,4'-DDD	6.139	0.000	11709032	0	1.172	N.D. #
23) Chlordane-1	4.351f	0.000	807790	0	2.184	N.D. #
24) Chlordane-2	4.824	0.000	2708901	0	6.710	N.D. #
25) Chlordane-3	5.379f	0.000	2085093	0	1.705	N.D. #
26) Chlordane-4	5.452	6.115	3292684	202280	3.165	0.385 #
27) Chlordane-5	6.319f	6.925	21786191	355930	57.593	4.175 #
-----						

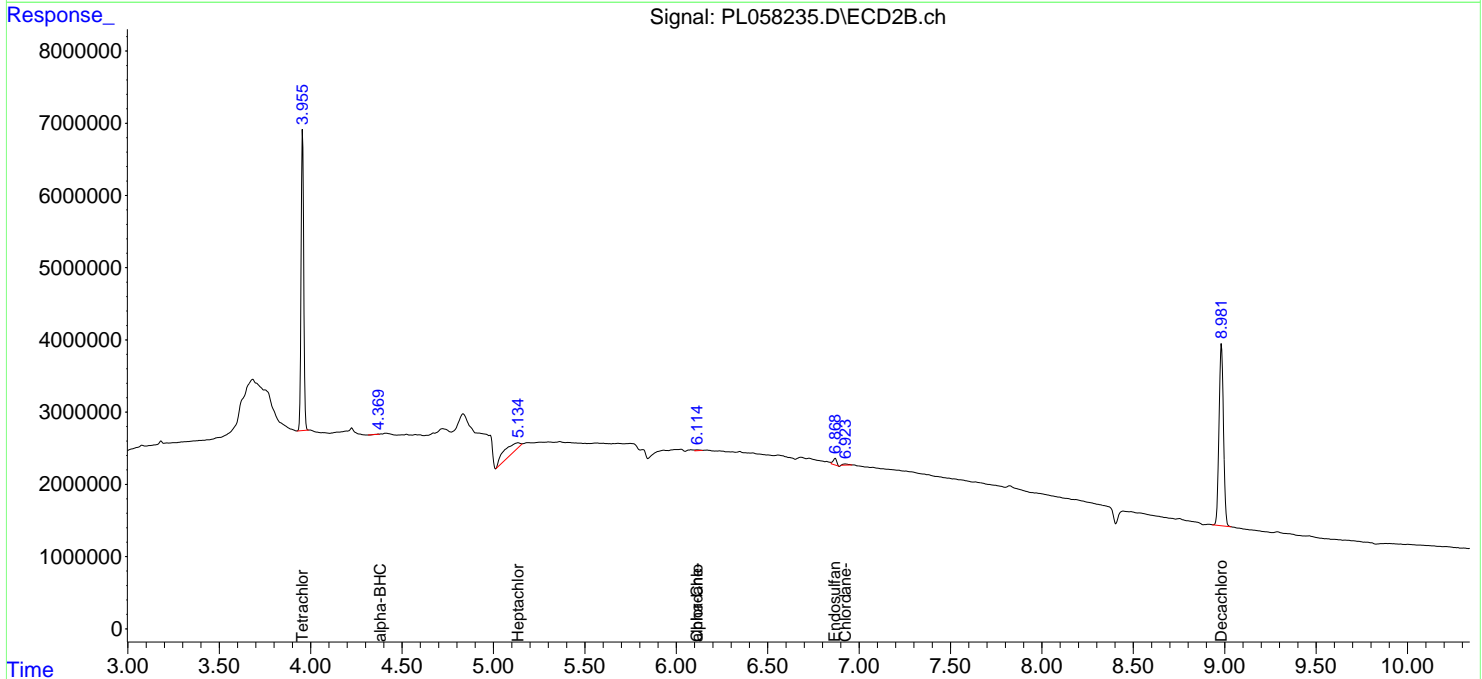
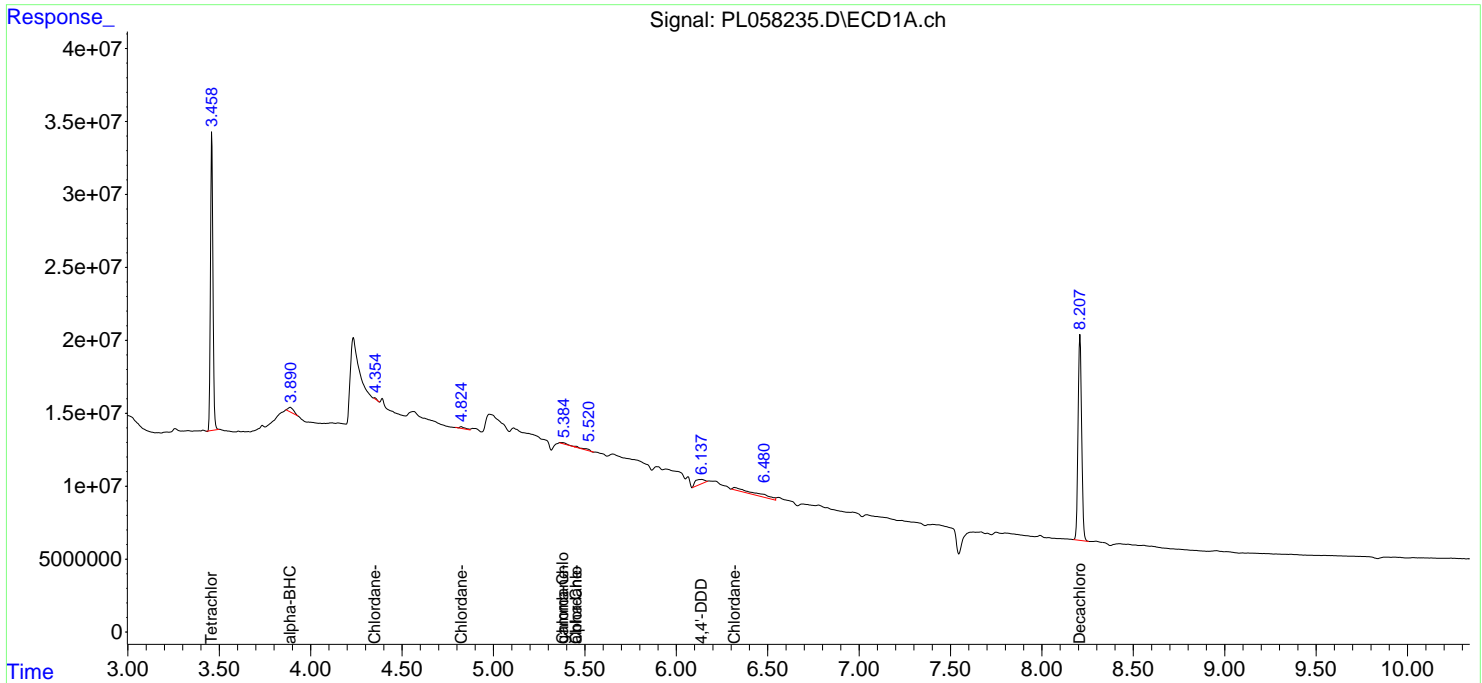
(f)=RT Delta > 1/2 Window (#)=Amounts differ by > 25% (m)=manual int.

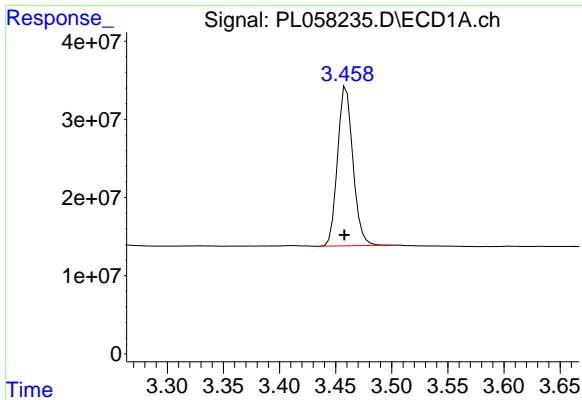
Data Path : Z:\pestpcbsrv\HPCHEM1\ECD\_L\Data\PL042120\  
 Data File : PL058235.D  
 Signal(s) : Signal #1: ECD1A.ch Signal #2: ECD2B.ch  
 Acq On : 21 Apr 2020 15:38  
 Operator : AJ\MA  
 Sample : PB128380BL  
 Misc :  
 ALS Vial : 6 Sample Multiplier: 1

Instrument :  
 ECD\_L  
 ClientSampled :  
 PB128380BL

Integration File signal 1: autoint1.e  
 Integration File signal 2: autoint2.e  
 Quant Time: Apr 22 00:55:31 2020  
 Quant Method : Z:\pestpcbsrv\HPCHEM1\ECD\_L\methods\PL040320.M  
 Quant Title : GC Extractables  
 QLast Update : Sat Apr 04 06:41:11 2020  
 Response via : Initial Calibration  
 Integrator: ChemStation

Volume Inj. : 1 µl  
 Signal #1 Phase : ZB-MR2 Signal #2 Phase: ZB-MR1  
 Signal #1 Info : 30M x 0.32mm x0.2 Signal #2 Info : 30M x 0.32mm x0.5µm

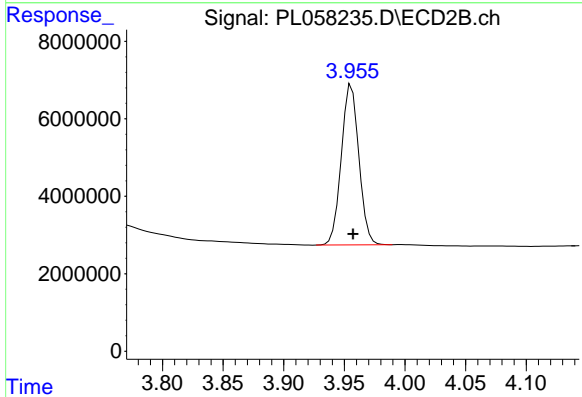




#1 Tetrachloro-m-xylene

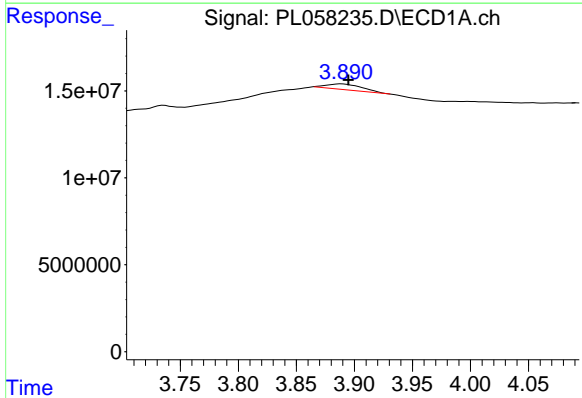
R.T.: 3.460 min  
 Delta R.T.: 0.002 min  
 Response: 194361475  
 Conc: 19.28 ng/ml

Instrument :  
 ECD\_L  
 ClientSampleId :  
 PB128380BL



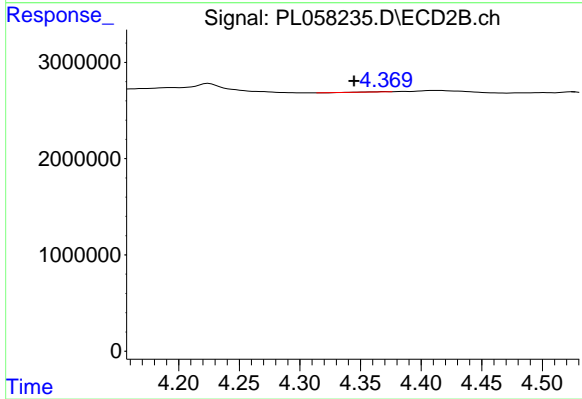
#1 Tetrachloro-m-xylene

R.T.: 3.956 min  
 Delta R.T.: -0.001 min  
 Response: 41757121  
 Conc: 19.24 ng/ml



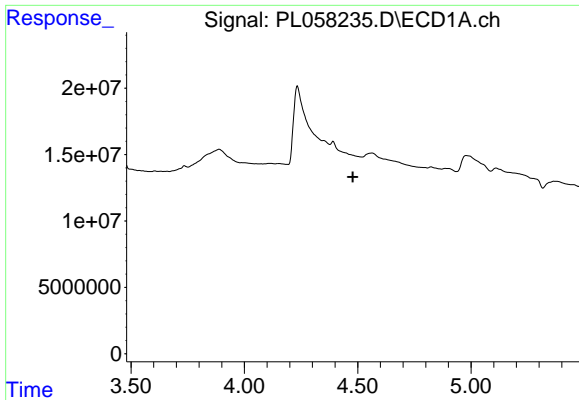
#2 alpha-BHC

R.T.: 3.889 min  
 Delta R.T.: -0.006 min  
 Response: 6457162  
 Conc: 0.37 ng/ml



#2 alpha-BHC

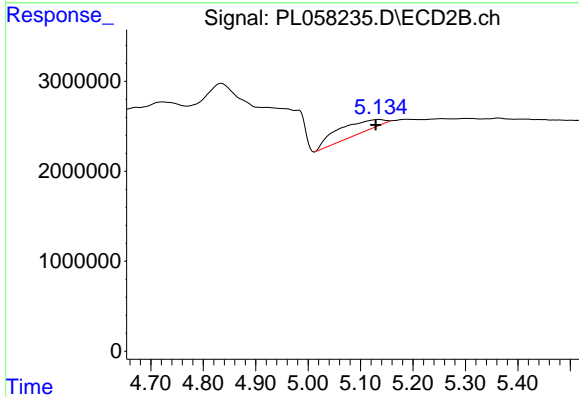
R.T.: 4.370 min  
 Delta R.T.: 0.026 min  
 Response: 21093  
 Conc: 0.01 ng/ml



#4 Heptachlor

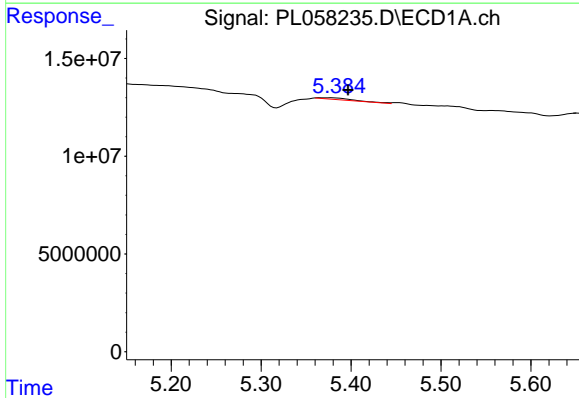
R.T.: 0.000 min  
 Exp R.T.: 4.479 min  
 Response: 0  
 Conc: N.D.

Instrument :  
 ECD\_L  
 ClientSampleId :  
 PB128380BL



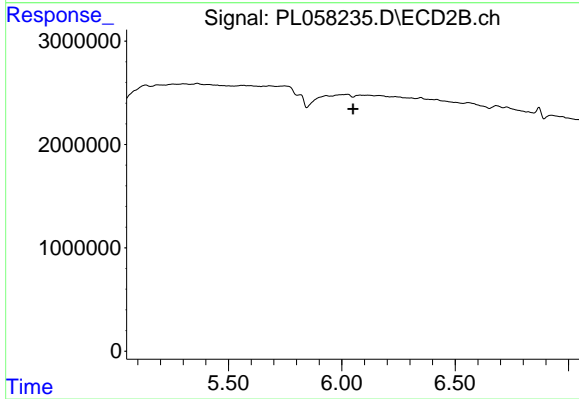
#4 Heptachlor

R.T.: 5.135 min  
 Delta R.T.: 0.006 min  
 Response: 8088863  
 Conc: 2.41 ng/ml



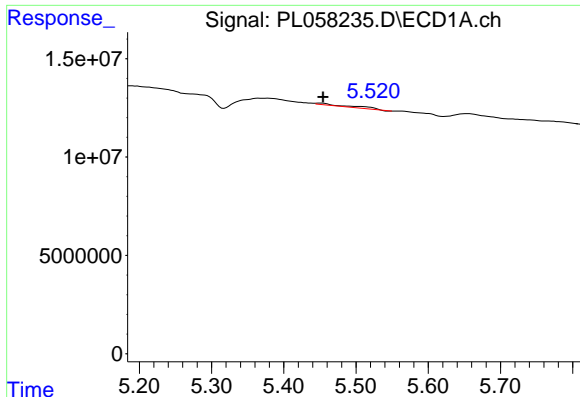
#10 gamma-Chlordane

R.T.: 5.379 min  
 Delta R.T.: -0.018 min  
 Response: 2085093  
 Conc: 0.15 ng/ml



#10 gamma-Chlordane

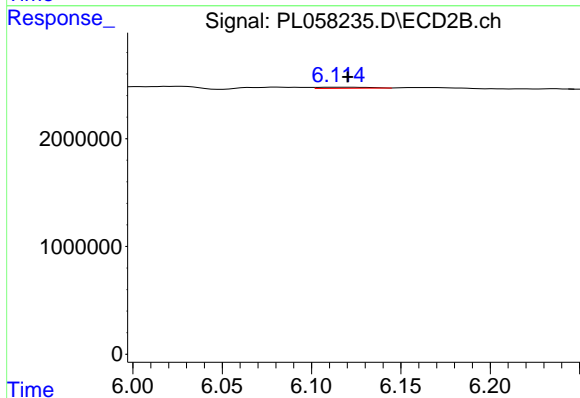
R.T.: 0.000 min  
 Exp R.T.: 6.049 min  
 Response: 0  
 Conc: N.D.



#11 alpha-Chlordane

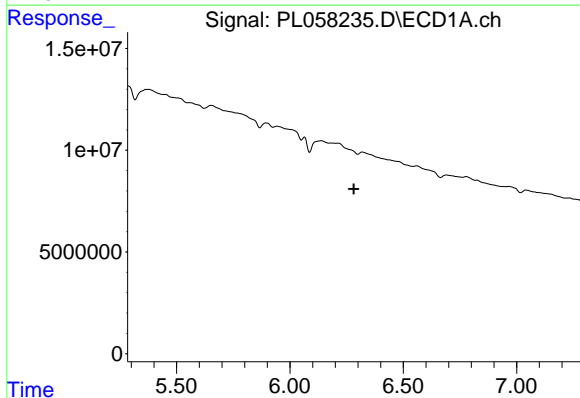
R.T.: 5.452 min  
 Delta R.T.: -0.003 min  
 Response: 3292684  
 Conc: 0.25 ng/ml

Instrument :  
 ECD\_L  
 ClientSampleId :  
 PB128380BL



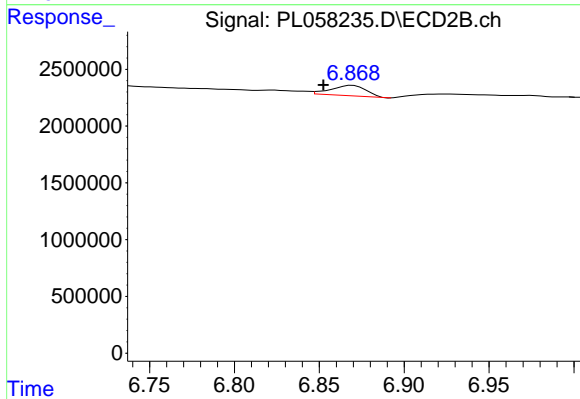
#11 alpha-Chlordane

R.T.: 6.115 min  
 Delta R.T.: -0.006 min  
 Response: 202280  
 Conc: 0.06 ng/ml



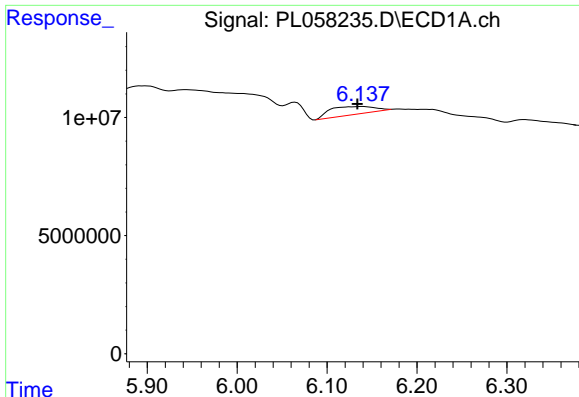
#15 Endosulfan II

R.T.: 0.000 min  
 Exp R.T. : 6.282 min  
 Response: 0  
 Conc: N.D.



#15 Endosulfan II

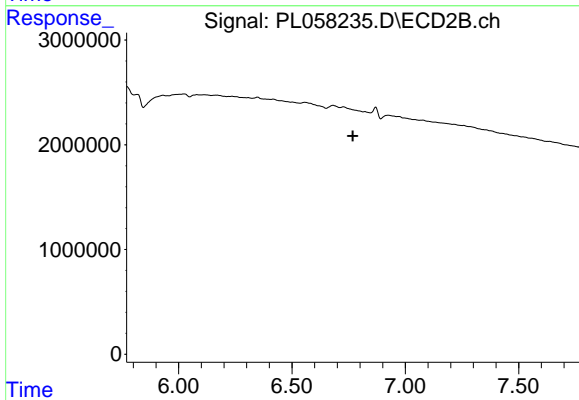
R.T.: 6.870 min  
 Delta R.T.: 0.017 min  
 Response: 1311114  
 Conc: 0.51 ng/ml



#16 4,4'-DDD

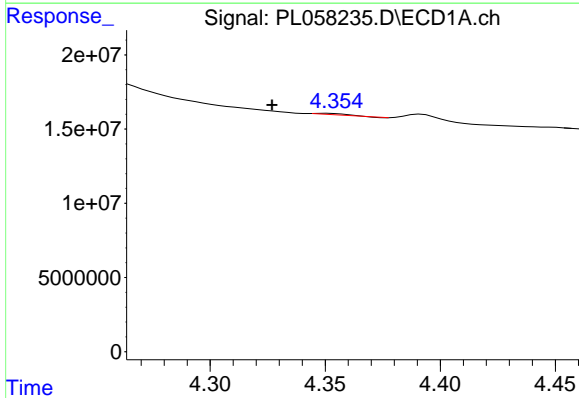
R.T.: 6.139 min  
 Delta R.T.: 0.005 min  
 Response: 11709032  
 Conc: 1.17 ng/ml

Instrument :  
 ECD\_L  
 ClientSampleId :  
 PB128380BL



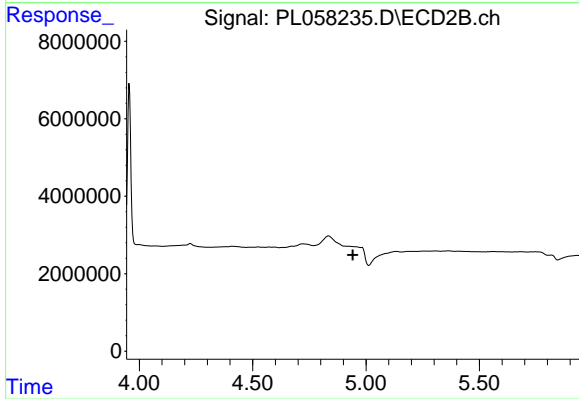
#16 4,4'-DDD

R.T.: 0.000 min  
 Exp R.T. : 6.769 min  
 Response: 0  
 Conc: N.D.



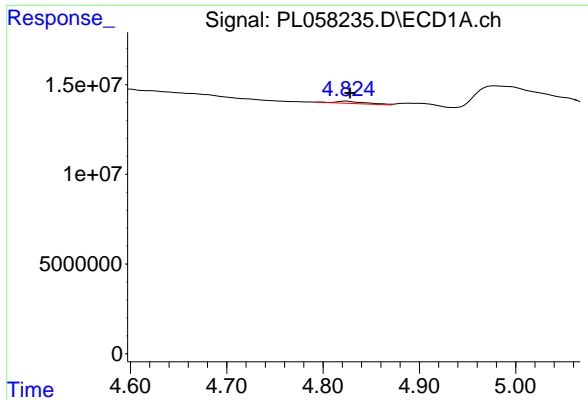
#23 Chlordane-1

R.T.: 4.351 min  
 Delta R.T.: 0.024 min  
 Response: 807790  
 Conc: 2.18 ng/ml



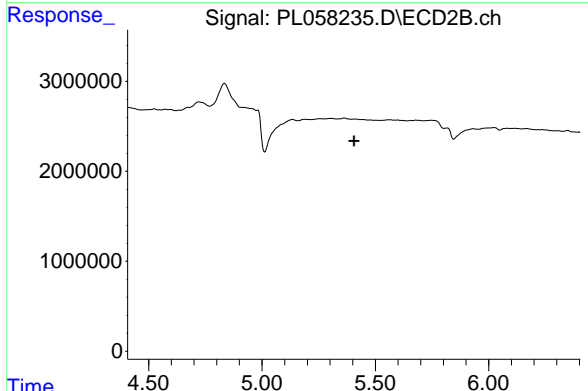
#23 Chlordane-1

R.T.: 0.000 min  
 Exp R.T. : 4.942 min  
 Response: 0  
 Conc: N.D.

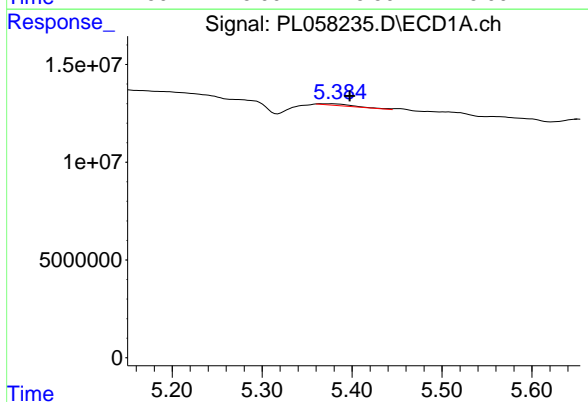


#24 Chlordane-2  
 R.T.: 4.824 min  
 Delta R.T.: -0.004 min  
 Response: 2708901  
 Conc: 6.71 ng/ml

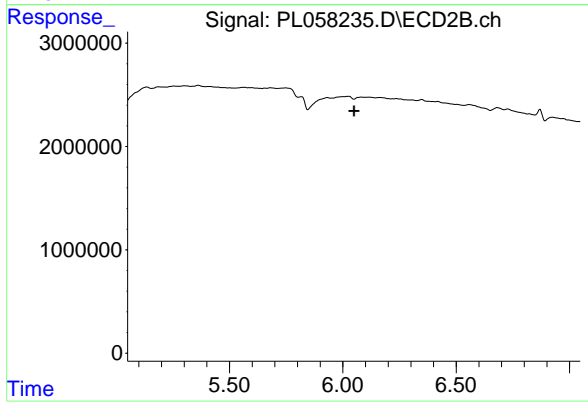
Instrument :  
 ECD\_L  
 ClientSampleId :  
 PB128380BL



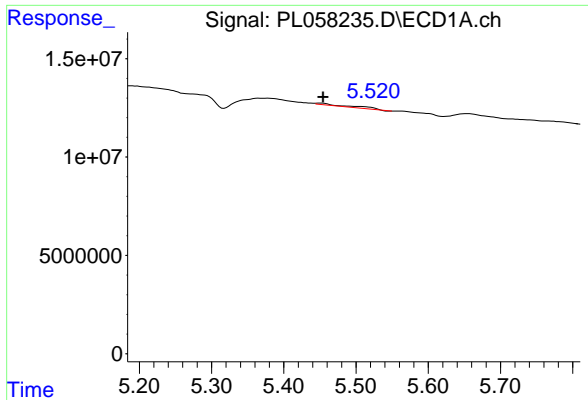
#24 Chlordane-2  
 R.T.: 0.000 min  
 Exp R.T. : 5.407 min  
 Response: 0  
 Conc: N.D.



#25 Chlordane-3  
 R.T.: 5.379 min  
 Delta R.T.: -0.018 min  
 Response: 2085093  
 Conc: 1.71 ng/ml

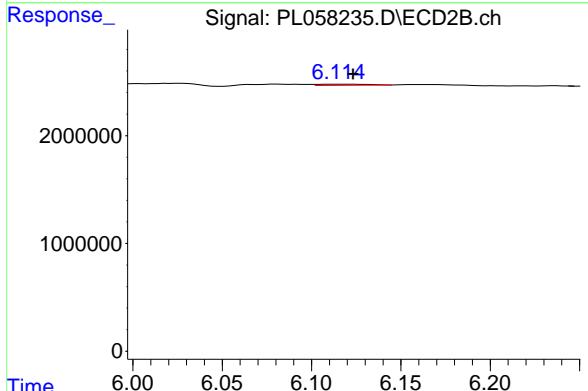


#25 Chlordane-3  
 R.T.: 0.000 min  
 Exp R.T. : 6.049 min  
 Response: 0  
 Conc: N.D.

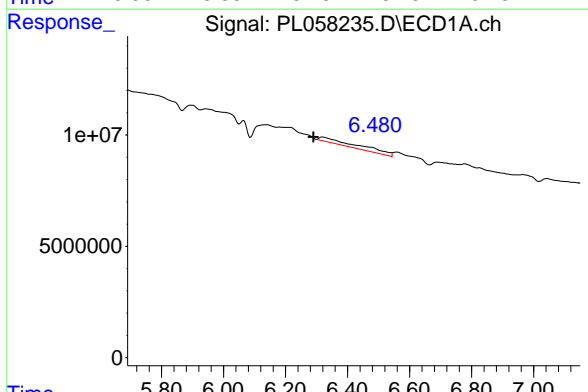


#26 Chlordane-4  
 R.T.: 5.452 min  
 Delta R.T.: -0.003 min  
 Response: 3292684  
 Conc: 3.17 ng/ml

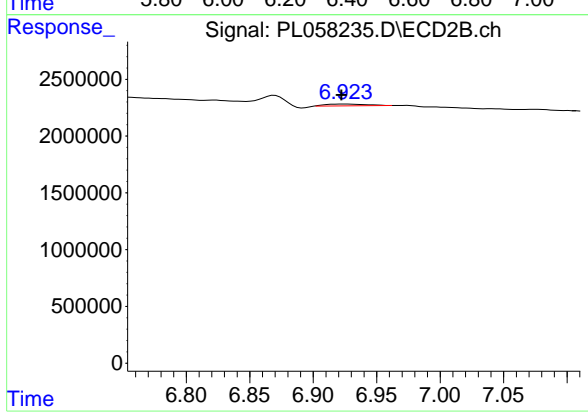
Instrument :  
 ECD\_L  
 ClientSampleId :  
 PB128380BL



#26 Chlordane-4  
 R.T.: 6.115 min  
 Delta R.T.: -0.009 min  
 Response: 202280  
 Conc: 0.39 ng/ml

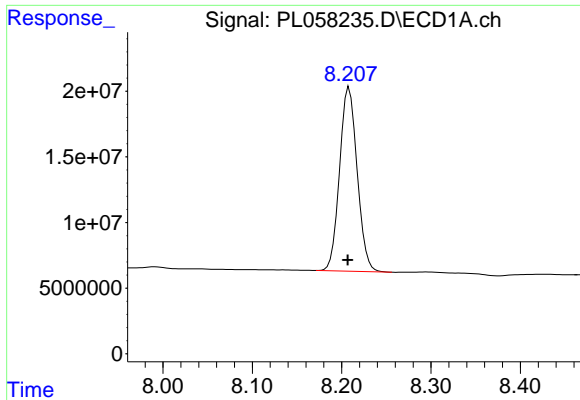


#27 Chlordane-5  
 R.T.: 6.319 min  
 Delta R.T.: 0.028 min  
 Response: 21786191  
 Conc: 57.59 ng/ml



#27 Chlordane-5  
 R.T.: 6.925 min  
 Delta R.T.: 0.003 min  
 Response: 355930  
 Conc: 4.17 ng/ml

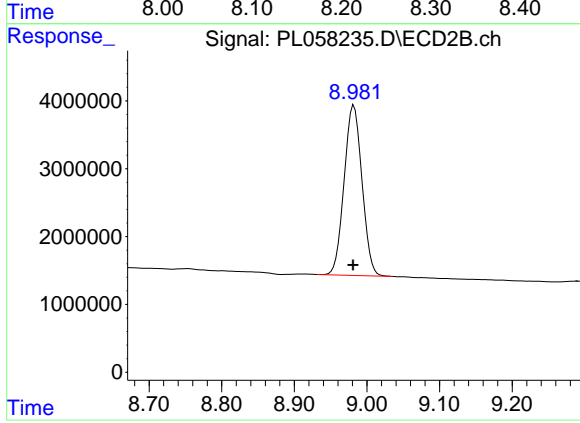




#28 Decachlorobiphenyl

R.T.: 8.208 min  
Delta R.T.: 0.002 min  
Response: 191843016  
Conc: 18.61 ng/ml

Instrument :  
ECD\_L  
ClientSampled :  
PB128380BL



#28 Decachlorobiphenyl

R.T.: 8.982 min  
Delta R.T.: 0.001 min  
Response: 42893274  
Conc: 19.20 ng/ml