

Data Path : Z:\pestpcbsrv\HPCHEM1\ECD\_L\Data\PL042120\  
 Data File : PL058256.D  
 Signal(s) : Signal #1: ECD1A.ch Signal #2: ECD2B.ch  
 Acq On : 21 Apr 2020 20:35  
 Operator : AJ\MA  
 Sample : PSTDCCC050  
 Misc :  
 ALS Vial : 4 Sample Multiplier: 1

Instrument :  
 ECD\_L  
 ClientSampleId :  
 PSTDCCC050

Integration File signal 1: autoint1.e  
 Integration File signal 2: autoint2.e  
 Quant Time: Apr 22 01:02:01 2020  
 Quant Method : Z:\pestpcbsrv\HPCHEM1\ECD\_L\methods\PL040320.M  
 Quant Title : GC Extractables  
 QLast Update : Sat Apr 04 06:41:11 2020  
 Response via : Initial Calibration  
 Integrator: ChemStation

Volume Inj. : 1 µl  
 Signal #1 Phase : ZB-MR2 Signal #2 Phase: ZB-MR1  
 Signal #1 Info : 30M x 0.32mm x0.2 Signal #2 Info : 30M x 0.32mm x0.5µm

	Compound	RT#1	RT#2	Resp#1	Resp#2	ng/ml	ng/ml
-----							
System Monitoring Compounds							
1)	SA Tetrachlo...	3.456	3.955	534.7E6	110.7E6	53.043	51.022
28)	SA Decachlor...	8.204	8.978	514.8E6	104.8E6	49.938	46.928
Target Compounds							
2)	A alpha-BHC	3.893	4.343	926.2E6	174.5E6	53.316	53.136
3)	MA gamma-BHC...	4.177	4.625	864.6E6	173.1E6	59.483	53.299
4)	MA Heptachlor	4.477	5.127	841.1E6	168.6E6	52.470	50.248
5)	MB Aldrin	4.724	5.428	831.6E6	171.8E6	56.475	53.048
6)	B beta-BHC	4.429	4.799	351.3E6	75327980	55.634	54.248
7)	B delta-BHC	4.633	5.012	858.3E6	157.4E6	56.555	62.432
8)	B Heptachlo...	5.168	5.813	751.0E6	169.5E6	55.875	62.767
9)	A Endosulfan I	5.506	6.168	687.5E6	153.6E6	56.091	51.498
10)	B gamma-Chl...	5.394	6.047	755.3E6	167.9E6	55.614	51.835
11)	B alpha-Chl...	5.452	6.118	736.3E6	168.4E6	55.295	51.473
12)	B 4,4'-DDE	5.616	6.278	750.4E6	152.7E6	57.281	51.564
13)	MA Dieldrin	5.749	6.423	732.7E6	157.6E6	56.320	51.581
14)	MA Endrin	6.007	6.640	650.9E6	129.9E6	55.766	51.972
15)	B Endosulfa...	6.280	6.850	587.7E6	127.7E6	53.129	49.222
16)	A 4,4'-DDD	6.132	6.767	557.9E6	116.7E6	55.822	51.137
17)	MA 4,4'-DDT	6.373	7.063	547.0E6	108.3E6	53.898	48.604
18)	B Endrin al...	6.448	6.974	489.4E6	108.2E6	52.347	48.684
19)	B Endosulfa...	6.661	7.197	536.1E6	117.5E6	52.763	49.498
20)	A Methoxychlor	6.918	7.523	274.1E6	60682177	49.727	47.705
21)	B Endrin ke...	7.151	7.665	583.1E6	122.3E6	52.375	49.494
22)	Mirex	7.338	8.115	393.3E6	89794014	47.978	48.838
23)	Chlordane-1	4.328	0.000	7266403	0	19.647	N.D. #
24)	Chlordane-2	4.828	5.428f	14810932	171.8E6	36.687	1646.042 #
25)	Chlordane-3	5.394	6.047	755.3E6	167.9E6	617.787	388.144 #
26)	Chlordane-4	5.452	6.118	736.3E6	168.4E6	707.829	320.870 #
27)	Chlordane-5	6.280	0.000	587.7E6	0	1553.694	N.D. #

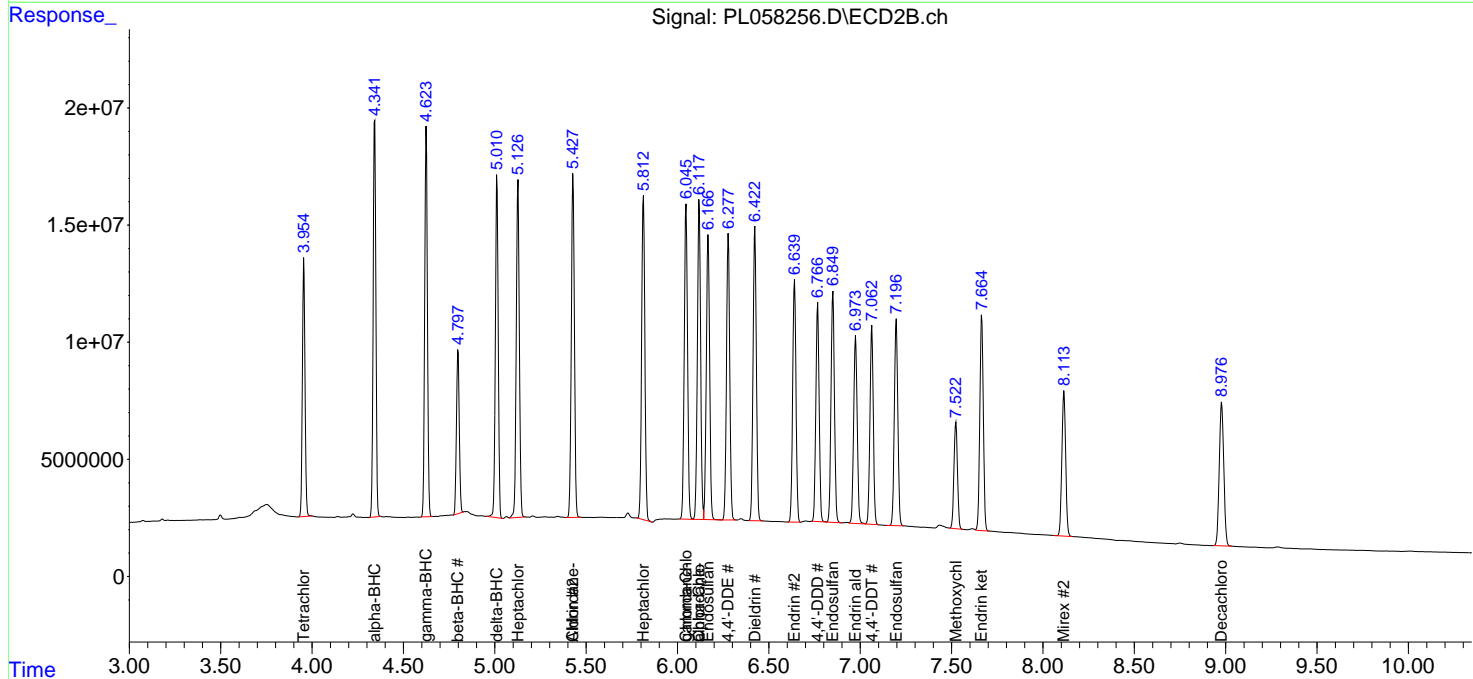
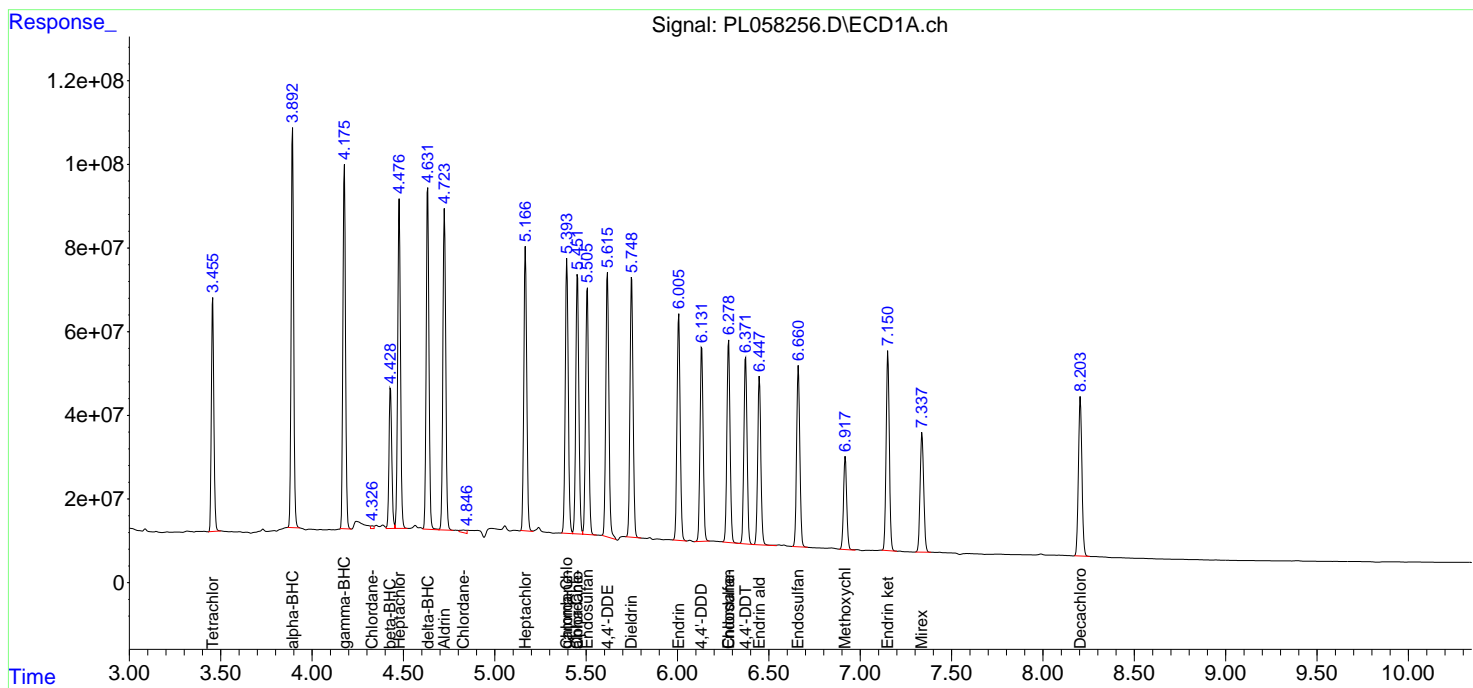
(f)=RT Delta > 1/2 Window (#)=Amounts differ by > 25% (m)=manual int.

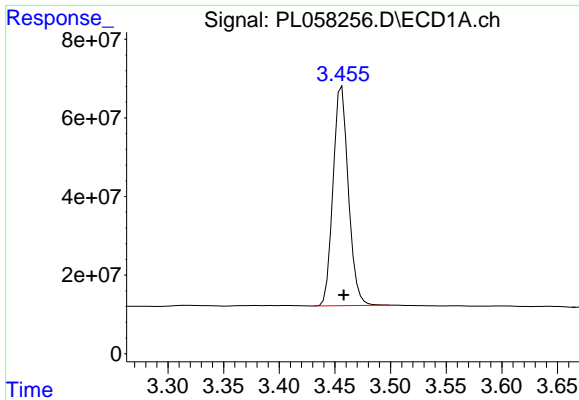
Data Path : Z:\pestpcbsrv\HPCHEM1\ECD\_L\Data\PL042120\  
 Data File : PL058256.D  
 Signal(s) : Signal #1: ECD1A.ch Signal #2: ECD2B.ch  
 Acq On : 21 Apr 2020 20:35  
 Operator : AJ\MA  
 Sample : PSTDCCC050  
 Misc :  
 ALS Vial : 4 Sample Multiplier: 1

Instrument :  
 ECD\_L  
 ClientSampleId :  
 PSTDCCC050

Integration File signal 1: autoint1.e  
 Integration File signal 2: autoint2.e  
 Quant Time: Apr 22 01:02:01 2020  
 Quant Method : Z:\pestpcbsrv\HPCHEM1\ECD\_L\methods\PL040320.M  
 Quant Title : GC Extractables  
 QLast Update : Sat Apr 04 06:41:11 2020  
 Response via : Initial Calibration  
 Integrator: ChemStation

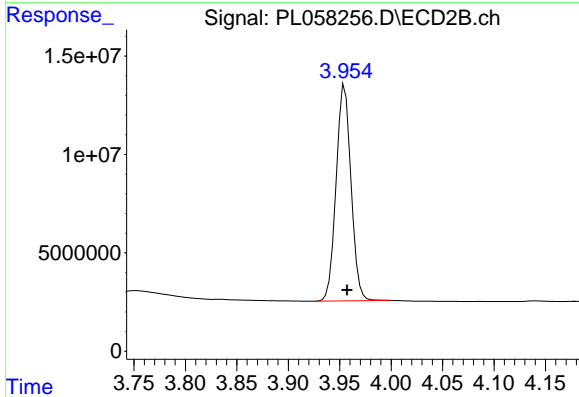
Volume Inj. : 1 µl  
 Signal #1 Phase : ZB-MR2 Signal #2 Phase: ZB-MR1  
 Signal #1 Info : 30M x 0.32mm x0.2 Signal #2 Info : 30M x 0.32mm x0.5µm



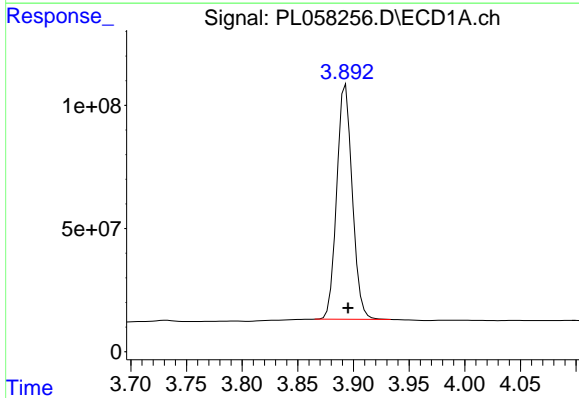


#1 Tetrachloro-m-xylene  
 R.T.: 3.456 min  
 Delta R.T.: -0.002 min  
 Response: 534723389  
 Conc: 53.04 ng/ml

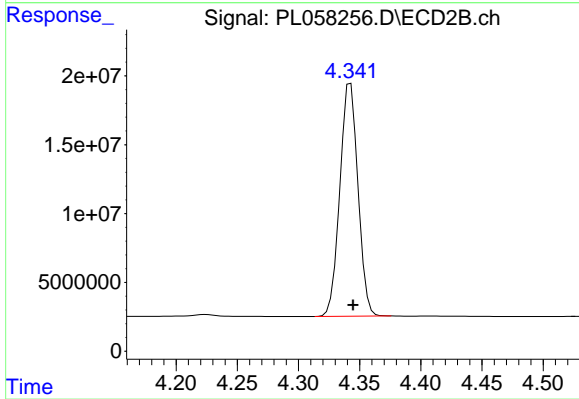
Instrument :  
 ECD\_L  
 ClientSampleId :  
 PSTDCCC050



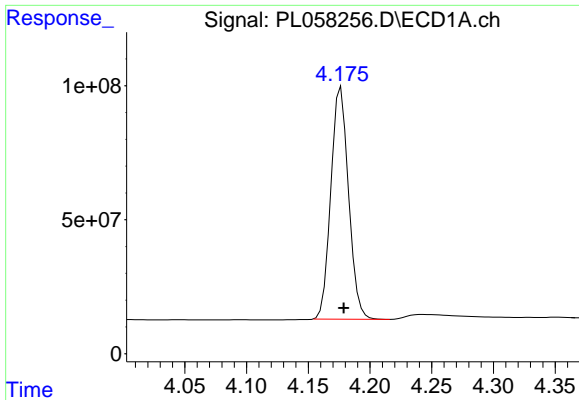
#1 Tetrachloro-m-xylene  
 R.T.: 3.955 min  
 Delta R.T.: -0.002 min  
 Response: 110725409  
 Conc: 51.02 ng/ml



#2 alpha-BHC  
 R.T.: 3.893 min  
 Delta R.T.: -0.002 min  
 Response: 926190368  
 Conc: 53.32 ng/ml



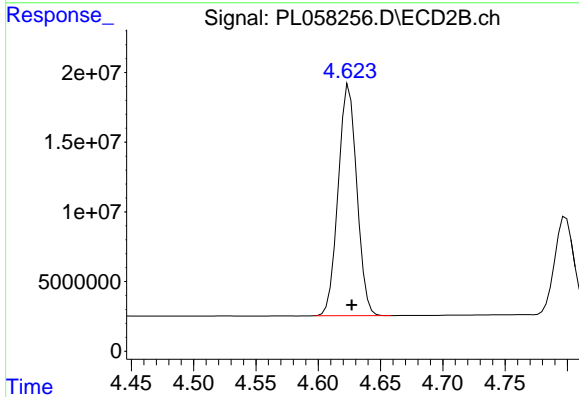
#2 alpha-BHC  
 R.T.: 4.343 min  
 Delta R.T.: -0.002 min  
 Response: 174481001  
 Conc: 53.14 ng/ml



#3 gamma-BHC (Lindane)

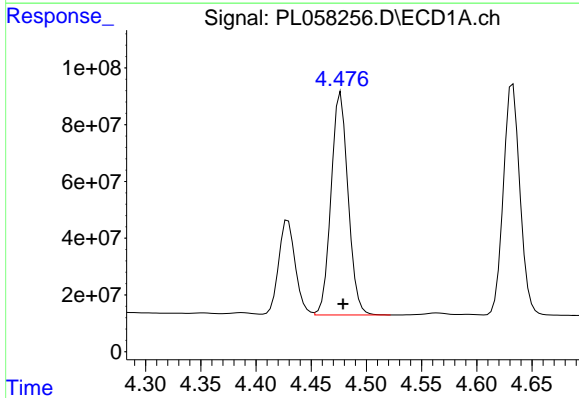
R.T.: 4.177 min  
 Delta R.T.: -0.002 min  
 Response: 864595137  
 Conc: 59.48 ng/ml

Instrument :  
 ECD\_L  
 ClientSampleId :  
 PSTDCCC050



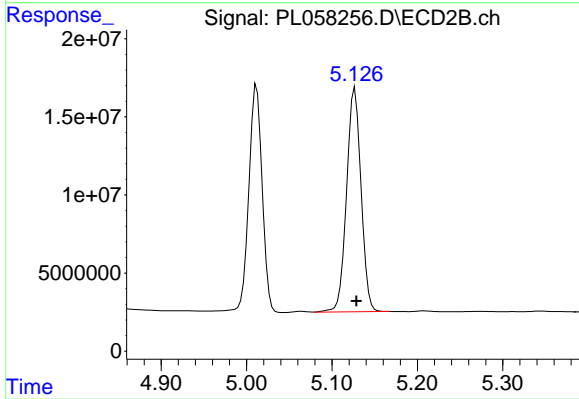
#3 gamma-BHC (Lindane)

R.T.: 4.625 min  
 Delta R.T.: -0.002 min  
 Response: 173147294  
 Conc: 53.30 ng/ml



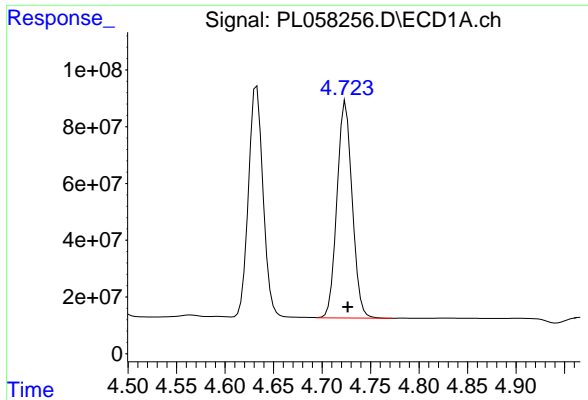
#4 Heptachlor

R.T.: 4.477 min  
 Delta R.T.: -0.002 min  
 Response: 841107069  
 Conc: 52.47 ng/ml



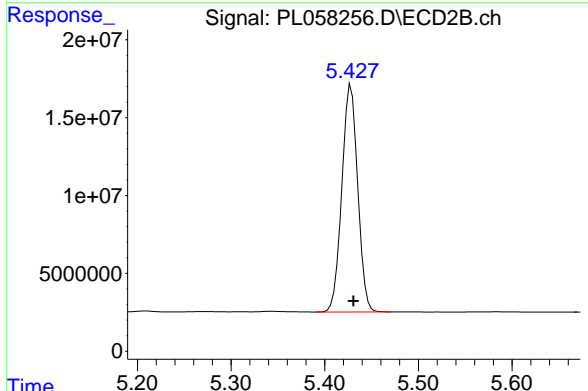
#4 Heptachlor

R.T.: 5.127 min  
 Delta R.T.: -0.002 min  
 Response: 168641263  
 Conc: 50.25 ng/ml

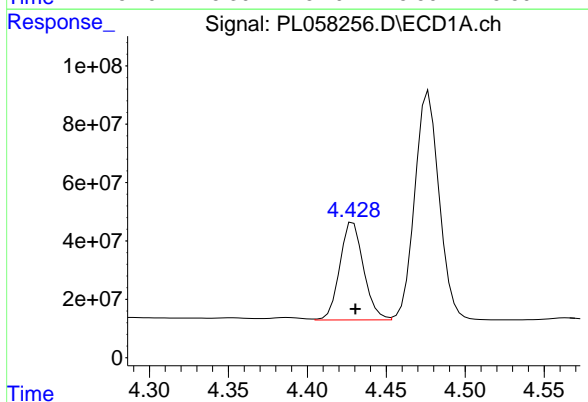


#5 Aldrin  
 R.T.: 4.724 min  
 Delta R.T.: -0.002 min  
 Response: 831590327  
 Conc: 56.47 ng/ml

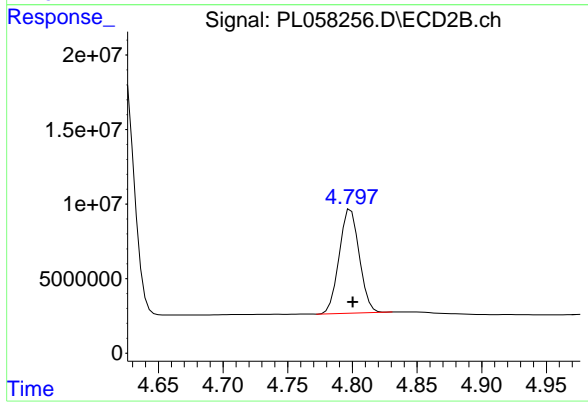
Instrument :  
 ECD\_L  
 ClientSampleId :  
 PSTDCCC050



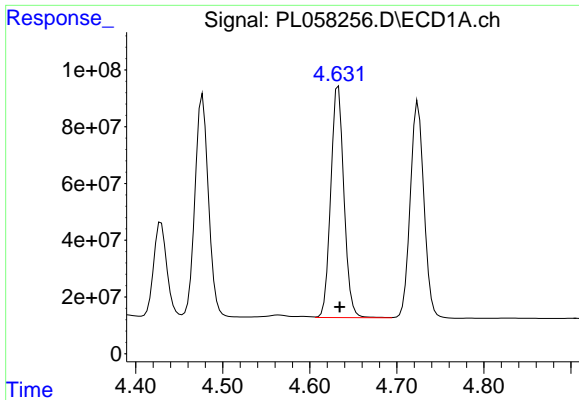
#5 Aldrin  
 R.T.: 5.428 min  
 Delta R.T.: -0.003 min  
 Response: 171778734  
 Conc: 53.05 ng/ml



#6 beta-BHC  
 R.T.: 4.429 min  
 Delta R.T.: -0.001 min  
 Response: 351342398  
 Conc: 55.63 ng/ml

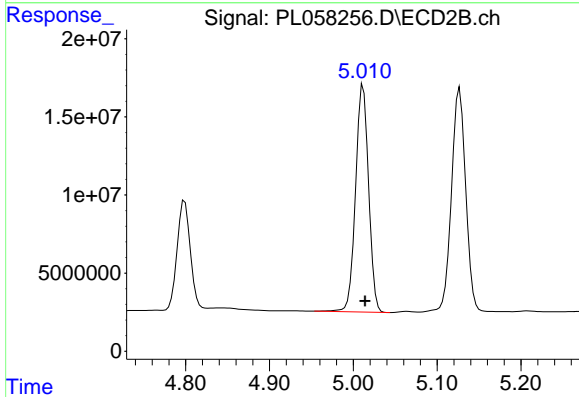


#6 beta-BHC  
 R.T.: 4.799 min  
 Delta R.T.: -0.001 min  
 Response: 75327980  
 Conc: 54.25 ng/ml

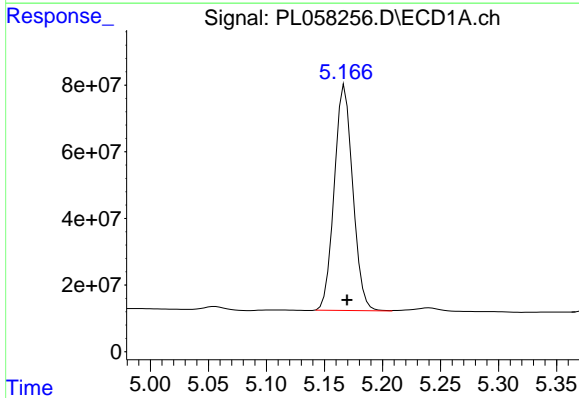


#7 delta-BHC  
 R.T.: 4.633 min  
 Delta R.T.: -0.002 min  
 Response: 858286289  
 Conc: 56.55 ng/ml

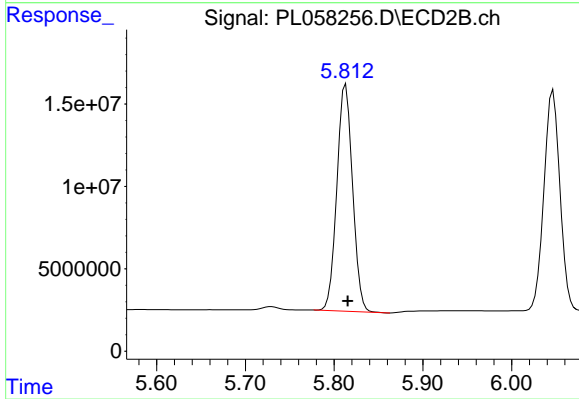
Instrument :  
 ECD\_L  
 ClientSampleId :  
 PSTDCCC050



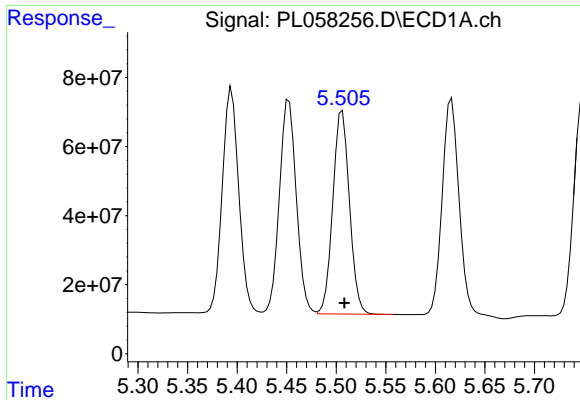
#7 delta-BHC  
 R.T.: 5.012 min  
 Delta R.T.: -0.002 min  
 Response: 157405112  
 Conc: 62.43 ng/ml



#8 Heptachlor epoxide  
 R.T.: 5.168 min  
 Delta R.T.: -0.002 min  
 Response: 750961566  
 Conc: 55.88 ng/ml



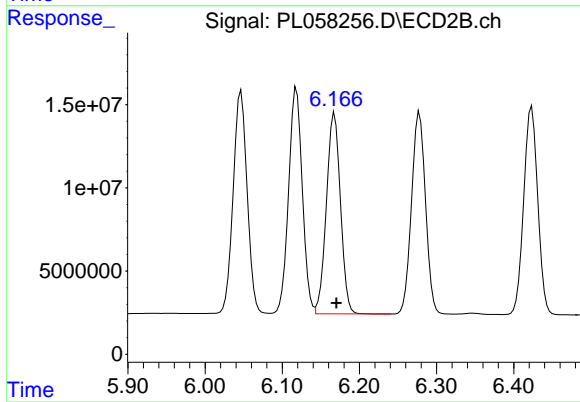
#8 Heptachlor epoxide  
 R.T.: 5.813 min  
 Delta R.T.: -0.002 min  
 Response: 169490137  
 Conc: 62.77 ng/ml



#9 Endosulfan I

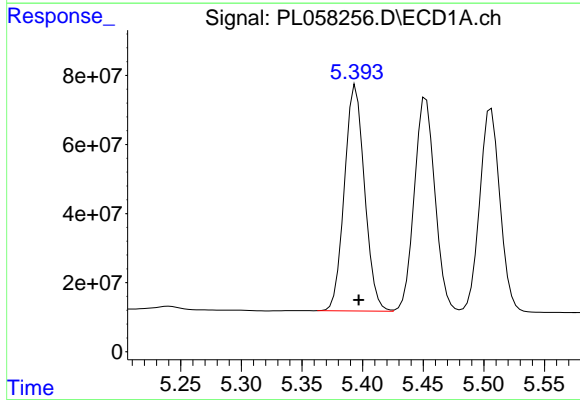
R.T.: 5.506 min  
 Delta R.T.: -0.002 min  
 Response: 687485055  
 Conc: 56.09 ng/ml

Instrument :  
 ECD\_L  
 ClientSampleId :  
 PSTDCCC050



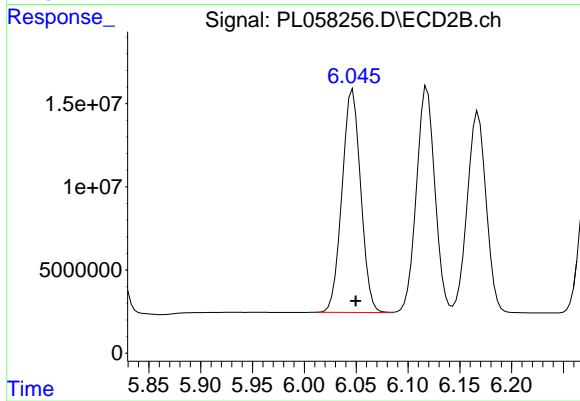
#9 Endosulfan I

R.T.: 6.168 min  
 Delta R.T.: -0.002 min  
 Response: 153553546  
 Conc: 51.50 ng/ml



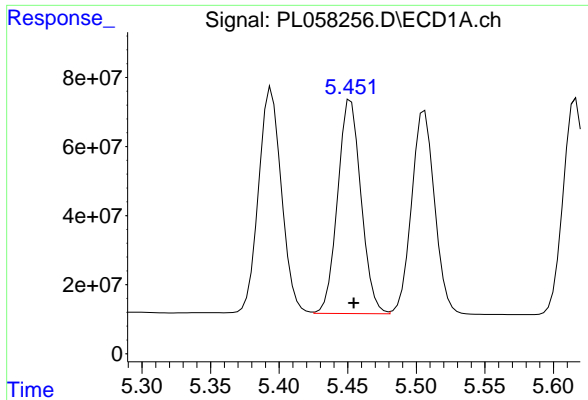
#10 gamma-Chlordane

R.T.: 5.394 min  
 Delta R.T.: -0.003 min  
 Response: 755314563  
 Conc: 55.61 ng/ml



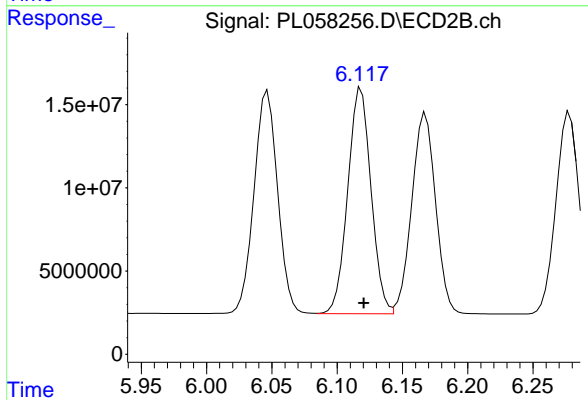
#10 gamma-Chlordane

R.T.: 6.047 min  
 Delta R.T.: -0.003 min  
 Response: 167939648  
 Conc: 51.84 ng/ml

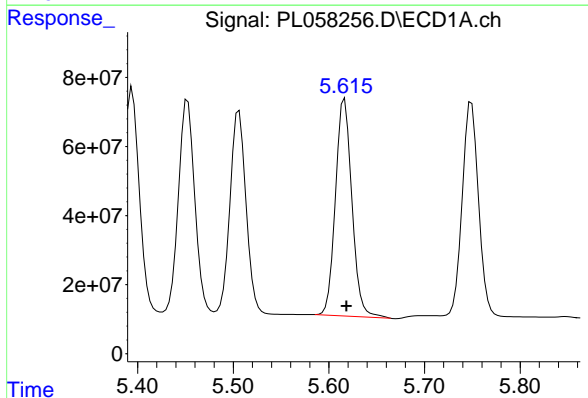


#11 alpha-Chlordane  
R.T.: 5.452 min  
Delta R.T.: -0.002 min  
Response: 736290627  
Conc: 55.30 ng/ml

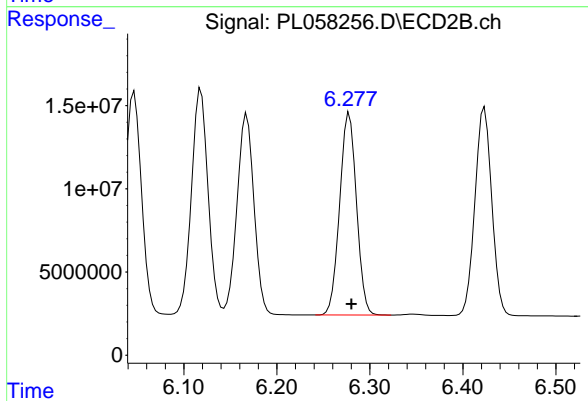
Instrument :  
ECD\_L  
ClientSampleId :  
PSTDCCC050



#11 alpha-Chlordane  
R.T.: 6.118 min  
Delta R.T.: -0.002 min  
Response: 168436428  
Conc: 51.47 ng/ml

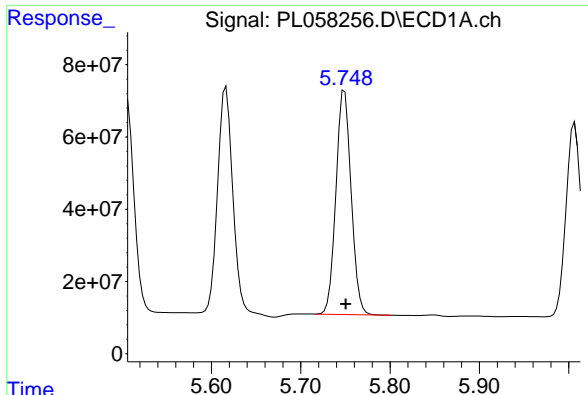


#12 4,4'-DDE  
R.T.: 5.616 min  
Delta R.T.: -0.002 min  
Response: 750393045  
Conc: 57.28 ng/ml



#12 4,4'-DDE  
R.T.: 6.278 min  
Delta R.T.: -0.002 min  
Response: 152663793  
Conc: 51.56 ng/ml

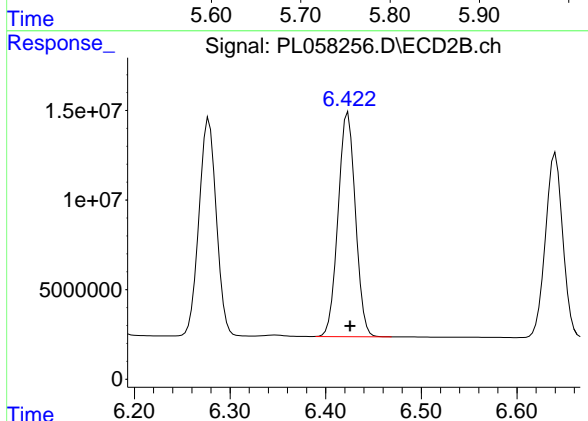




#13 Dieldrin

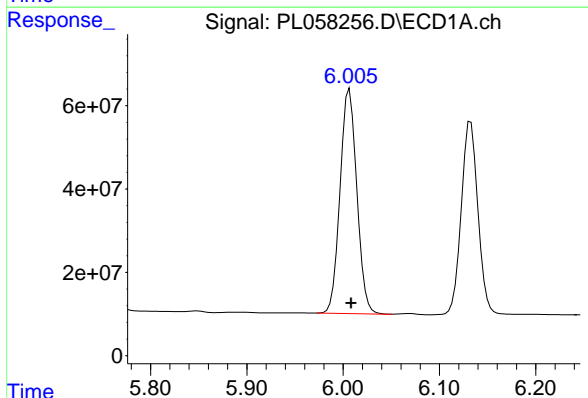
R.T.: 5.749 min  
Delta R.T.: -0.002 min  
Response: 732665530  
Conc: 56.32 ng/ml

Instrument :  
ECD\_L  
ClientSampleId :  
PSTDCCC050



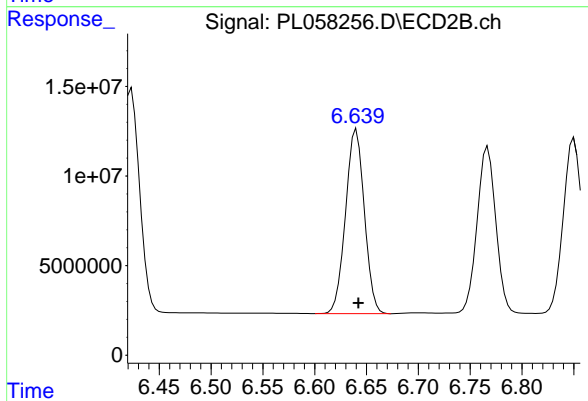
#13 Dieldrin

R.T.: 6.423 min  
Delta R.T.: -0.002 min  
Response: 157611972  
Conc: 51.58 ng/ml



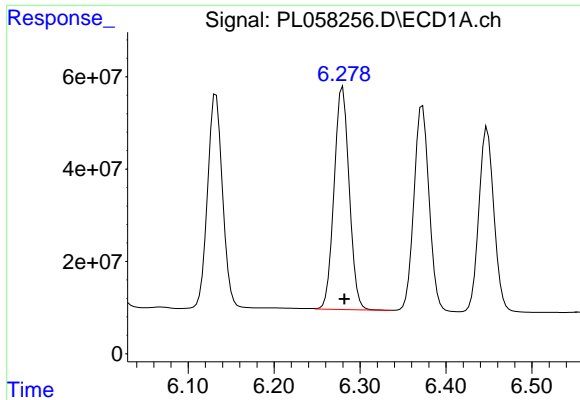
#14 Endrin

R.T.: 6.007 min  
Delta R.T.: -0.002 min  
Response: 650942429  
Conc: 55.77 ng/ml



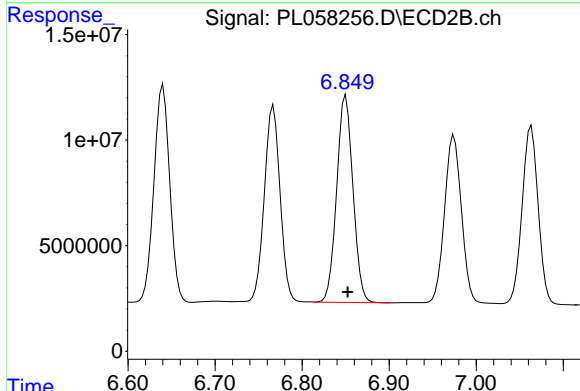
#14 Endrin

R.T.: 6.640 min  
Delta R.T.: -0.002 min  
Response: 129854451  
Conc: 51.97 ng/ml

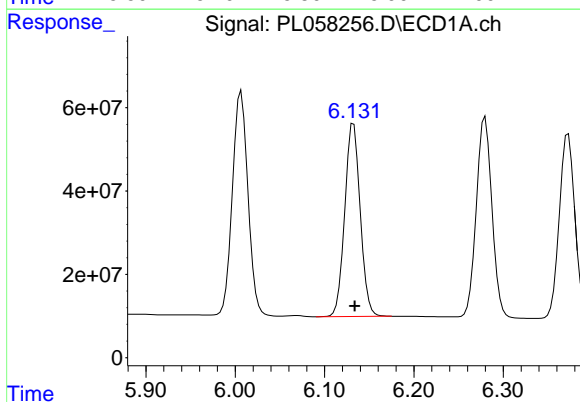


#15 Endosulfan II  
 R.T.: 6.280 min  
 Delta R.T.: -0.002 min  
 Response: 587723917  
 Conc: 53.13 ng/ml

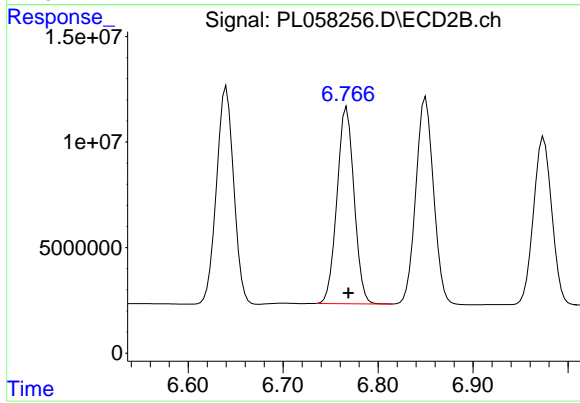
Instrument :  
 ECD\_L  
 ClientSampleId :  
 PSTDCCC050



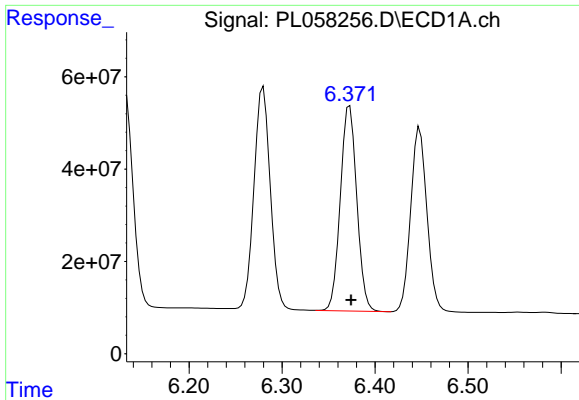
#15 Endosulfan II  
 R.T.: 6.850 min  
 Delta R.T.: -0.002 min  
 Response: 127662674  
 Conc: 49.22 ng/ml



#16 4,4'-DDD  
 R.T.: 6.132 min  
 Delta R.T.: -0.001 min  
 Response: 557910807  
 Conc: 55.82 ng/ml



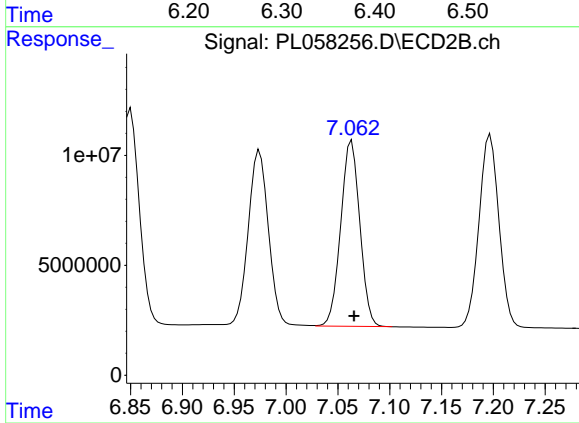
#16 4,4'-DDD  
 R.T.: 6.767 min  
 Delta R.T.: -0.002 min  
 Response: 116703778  
 Conc: 51.14 ng/ml



#17 4,4'-DDT

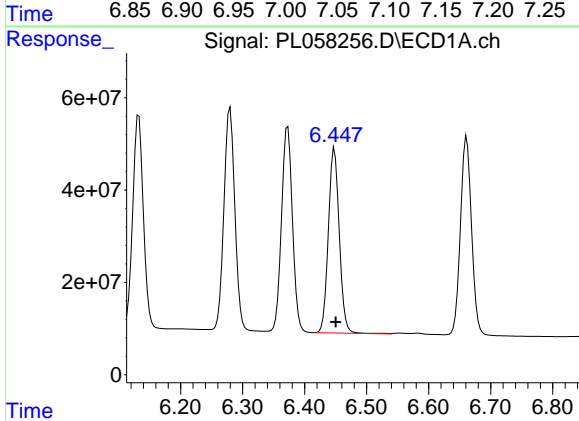
R.T.: 6.373 min  
 Delta R.T.: -0.002 min  
 Response: 547032261  
 Conc: 53.90 ng/ml

Instrument :  
 ECD\_L  
 ClientSampleId :  
 PSTDCCC050



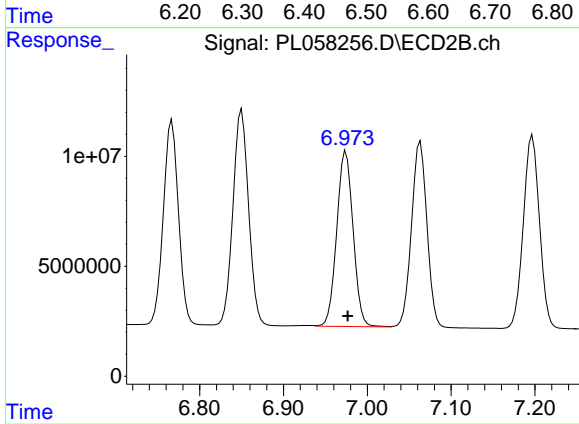
#17 4,4'-DDT

R.T.: 7.063 min  
 Delta R.T.: -0.002 min  
 Response: 108259552  
 Conc: 48.60 ng/ml



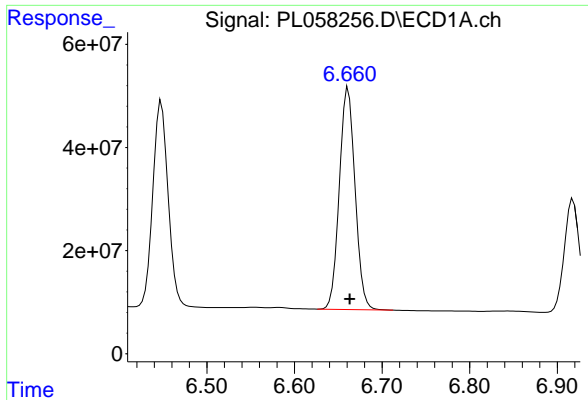
#18 Endrin aldehyde

R.T.: 6.448 min  
 Delta R.T.: -0.002 min  
 Response: 489424961  
 Conc: 52.35 ng/ml



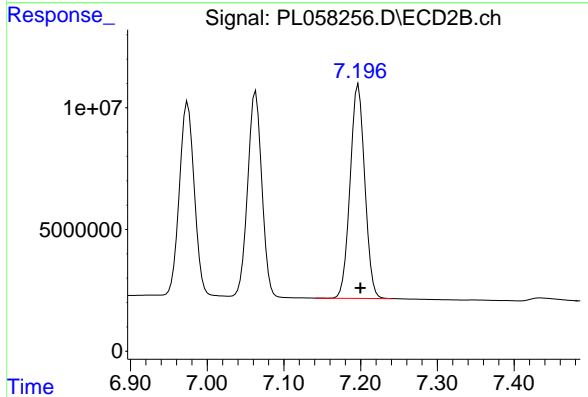
#18 Endrin aldehyde

R.T.: 6.974 min  
 Delta R.T.: -0.002 min  
 Response: 108157153  
 Conc: 48.68 ng/ml

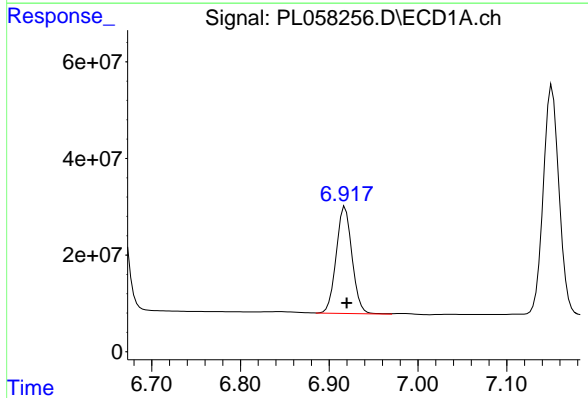


#19 Endosulfan Sulfate  
 R.T.: 6.661 min  
 Delta R.T.: -0.002 min  
 Response: 536056724  
 Conc: 52.76 ng/ml

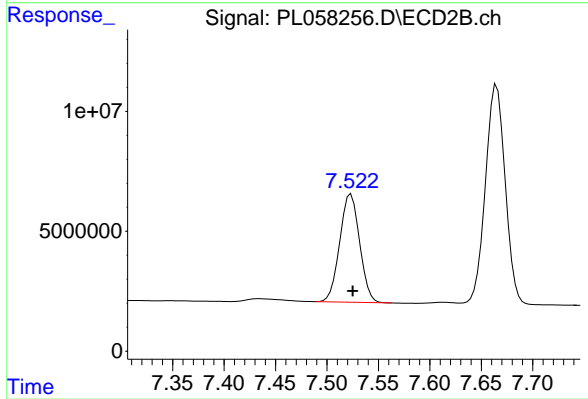
Instrument :  
 ECD\_L  
 ClientSampleId :  
 PSTDCCC050



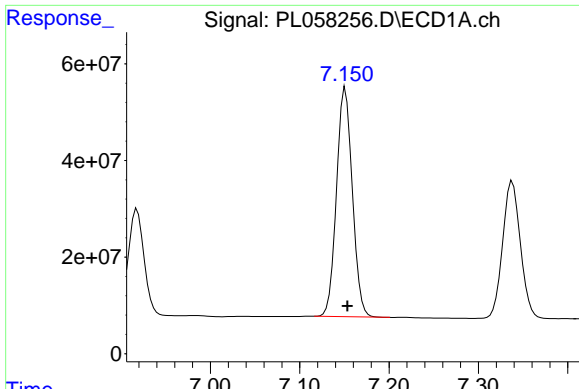
#19 Endosulfan Sulfate  
 R.T.: 7.197 min  
 Delta R.T.: -0.002 min  
 Response: 117461527  
 Conc: 49.50 ng/ml



#20 Methoxychlor  
 R.T.: 6.918 min  
 Delta R.T.: -0.002 min  
 Response: 274126660  
 Conc: 49.73 ng/ml



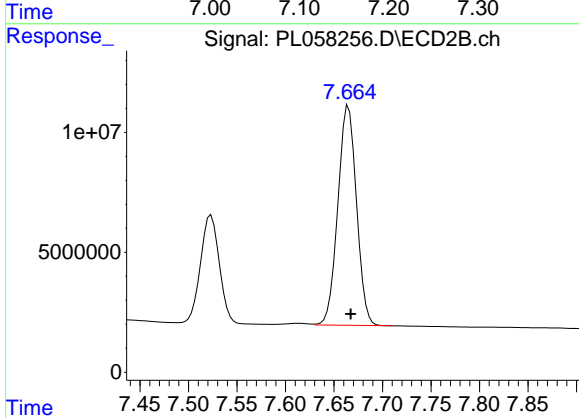
#20 Methoxychlor  
 R.T.: 7.523 min  
 Delta R.T.: -0.002 min  
 Response: 60682177  
 Conc: 47.71 ng/ml



#21 Endrin ketone

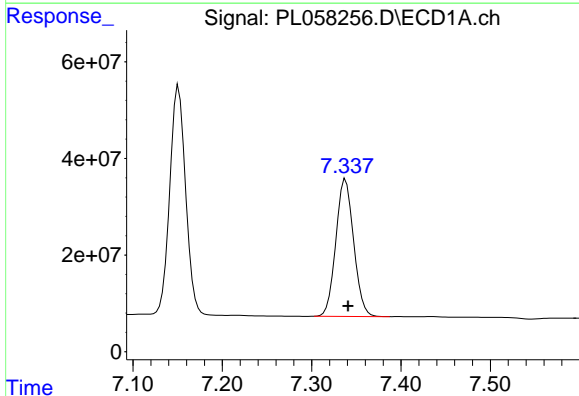
R.T.: 7.151 min  
 Delta R.T.: -0.002 min  
 Response: 583082977  
 Conc: 52.38 ng/ml

Instrument :  
 ECD\_L  
 ClientSampleId :  
 PSTDCCC050



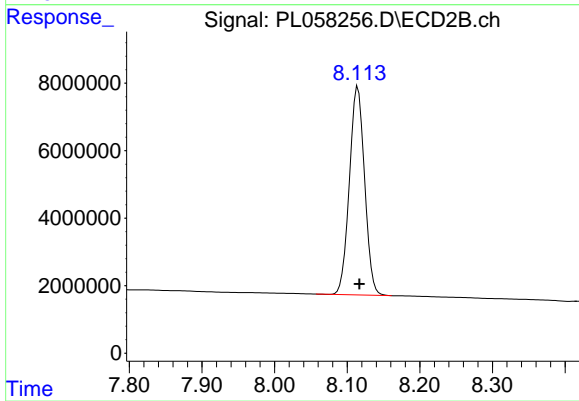
#21 Endrin ketone

R.T.: 7.665 min  
 Delta R.T.: -0.002 min  
 Response: 122349129  
 Conc: 49.49 ng/ml



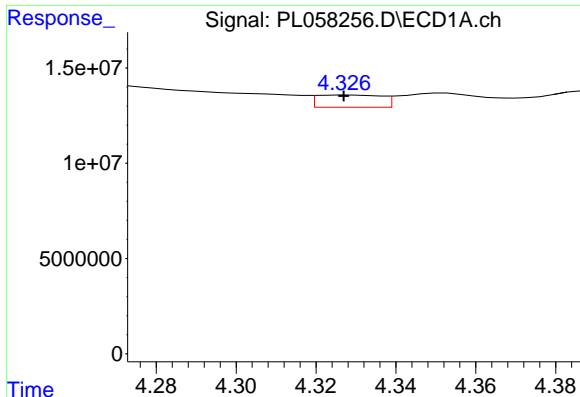
#22 Mirex

R.T.: 7.338 min  
 Delta R.T.: -0.003 min  
 Response: 393288557  
 Conc: 47.98 ng/ml



#22 Mirex

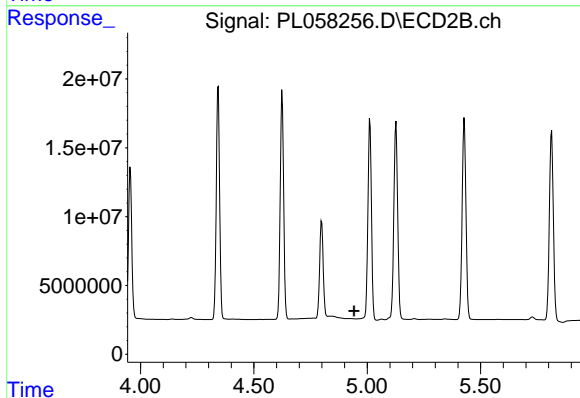
R.T.: 8.115 min  
 Delta R.T.: -0.002 min  
 Response: 89794014  
 Conc: 48.84 ng/ml



#23 Chlordane-1

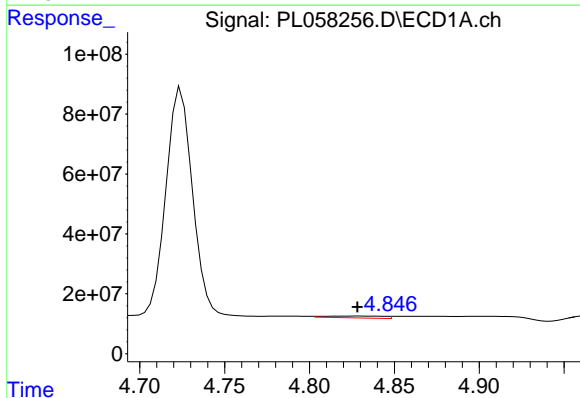
R.T.: 4.328 min  
 Delta R.T.: 0.000 min  
 Response: 7266403  
 Conc: 19.65 ng/ml

Instrument :  
 ECD\_L  
 ClientSampleId :  
 PSTDCCC050



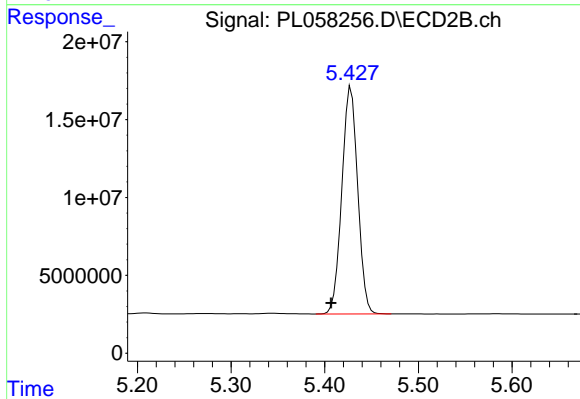
#23 Chlordane-1

R.T.: 0.000 min  
 Exp R.T. : 4.942 min  
 Response: 0  
 Conc: N.D.



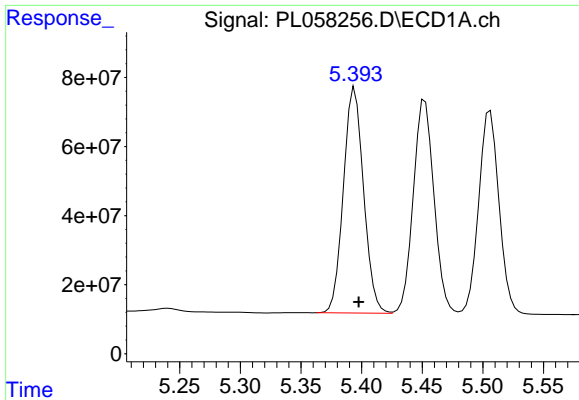
#24 Chlordane-2

R.T.: 4.828 min  
 Delta R.T.: 0.000 min  
 Response: 14810932  
 Conc: 36.69 ng/ml



#24 Chlordane-2

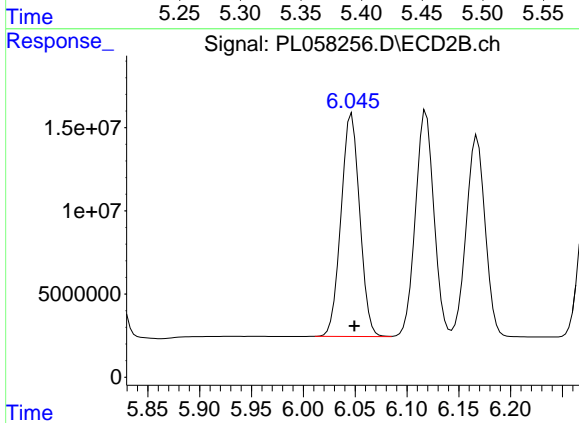
R.T.: 5.428 min  
 Delta R.T.: 0.021 min  
 Response: 171778734  
 Conc: 1646.04 ng/ml



#25 Chlordane-3

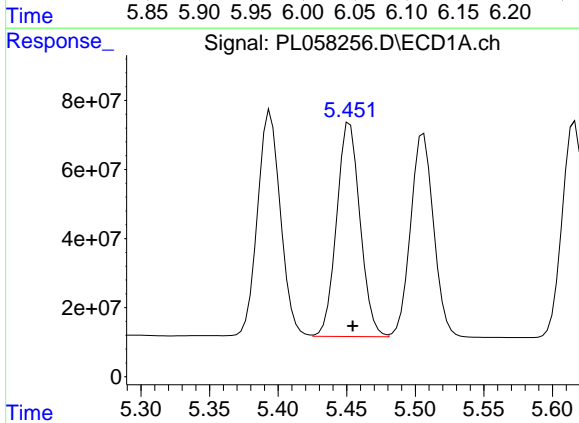
R.T.: 5.394 min  
Delta R.T.: -0.003 min  
Response: 755314563  
Conc: 617.79 ng/ml

Instrument :  
ECD\_L  
ClientSampleId :  
PSTDCCC050



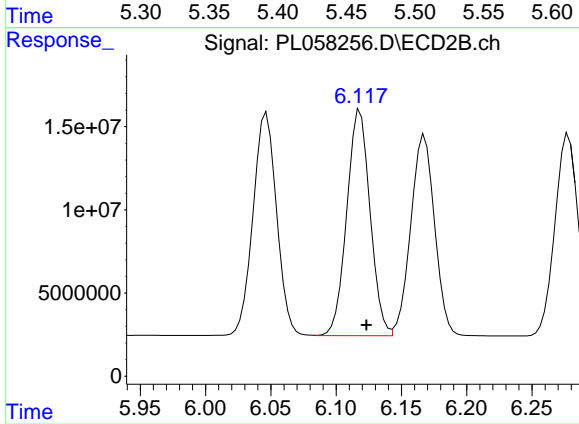
#25 Chlordane-3

R.T.: 6.047 min  
Delta R.T.: -0.003 min  
Response: 167939648  
Conc: 388.14 ng/ml



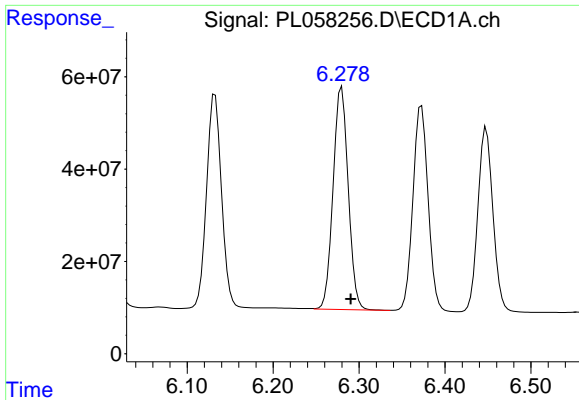
#26 Chlordane-4

R.T.: 5.452 min  
Delta R.T.: -0.002 min  
Response: 736290627  
Conc: 707.83 ng/ml



#26 Chlordane-4

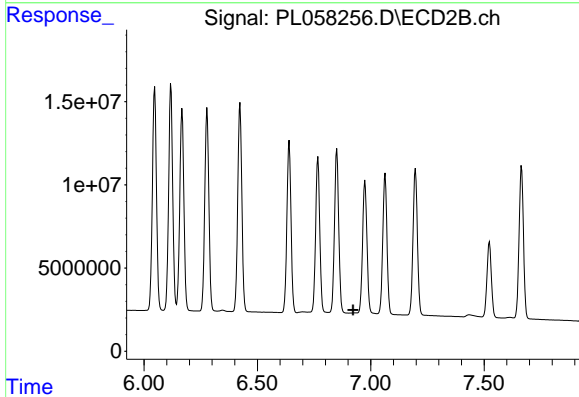
R.T.: 6.118 min  
Delta R.T.: -0.005 min  
Response: 168436428  
Conc: 320.87 ng/ml



#27 Chlordane-5

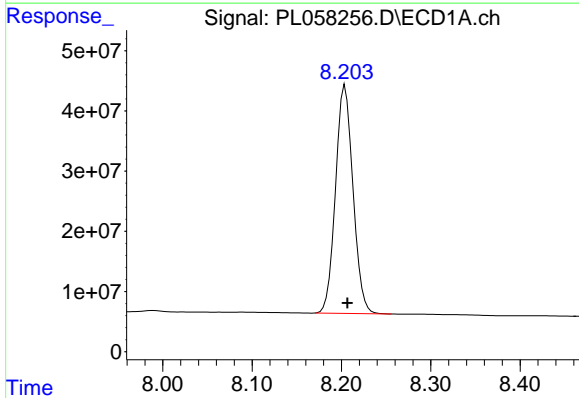
R.T.: 6.280 min  
Delta R.T.: -0.010 min  
Response: 587723917  
Conc: 1553.69 ng/ml

Instrument :  
ECD\_L  
ClientSampleId :  
PSTDCCC050



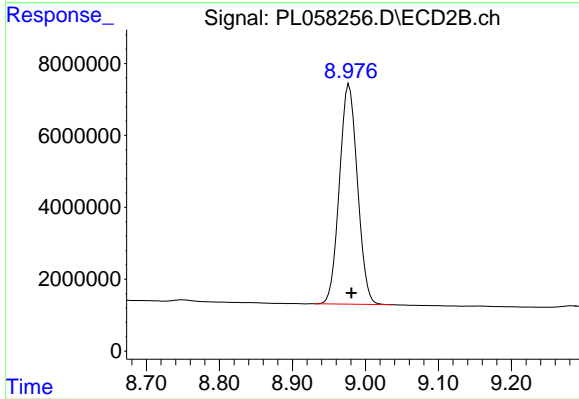
#27 Chlordane-5

R.T.: 0.000 min  
Exp R.T. : 6.922 min  
Response: 0  
Conc: N.D.



#28 Decachlorobiphenyl

R.T.: 8.204 min  
Delta R.T.: -0.003 min  
Response: 514788044  
Conc: 49.94 ng/ml



#28 Decachlorobiphenyl

R.T.: 8.978 min  
Delta R.T.: -0.003 min  
Response: 104825593  
Conc: 46.93 ng/ml