

Data Path : Z:\pestpcbsrv\HPCHEM1\ECD_L\Data\PL042120\
 Data File : PL058286.D
 Signal(s) : Signal #1: ECD1A.ch Signal #2: ECD2B.ch
 Acq On : 22 Apr 2020 03:40
 Operator : AJ\MA
 Sample : L2339-03
 Misc :
 ALS Vial : 52 Sample Multiplier: 1

Instrument :
 ECD_L
 ClientSampleId :
 BIN-4

Integration File signal 1: autoint1.e
 Integration File signal 2: autoint2.e
 Quant Time: Apr 22 04:33:35 2020
 Quant Method : Z:\pestpcbsrv\HPCHEM1\ECD_L\methods\PL040320.M
 Quant Title : GC Extractables
 QLast Update : Sat Apr 04 06:41:11 2020
 Response via : Initial Calibration
 Integrator: ChemStation

Volume Inj. : 1 µl
 Signal #1 Phase : ZB-MR2 Signal #2 Phase: ZB-MR1
 Signal #1 Info : 30M x 0.32mm x0.2 Signal #2 Info : 30M x 0.32mm x0.5µm

	Compound	RT#1	RT#2	Resp#1	Resp#2	ng/ml	ng/ml

System Monitoring Compounds							
1)	SA Tetrachlo...	3.456	3.955	233.2E6	50511907	23.134	23.276
28)	SA Decachlor...	8.204	8.978	252.5E6	51759934	24.493	23.172
Target Compounds							
4)	MA Heptachlor	4.479	5.139	1006633	643988	0.063	0.192 #
7)	B delta-BHC	0.000	4.987f	0	6049238	N.D.	4.347 #
10)	B gamma-Chl...	0.000	6.040	0	820244	N.D.	0.253 #
11)	B alpha-Chl...	5.446	6.139f	-2012660	807682	N.D.	0.247
15)	B Endosulfa...	0.000	6.867	0	483235	N.D.	0.186 #
16)	A 4,4'-DDD	6.136	0.000	4833046	0	0.484	N.D. #
18)	B Endrin al...	6.420f	0.000	3235543	0	0.346	N.D. #
23)	Chlordane-1	4.319	0.000	1593007	0	4.307	N.D. #
24)	Chlordane-2	4.849f	0.000	15961844	0	39.537	N.D. #
25)	Chlordane-3	0.000	6.040	0	820244	N.D.	1.896 #

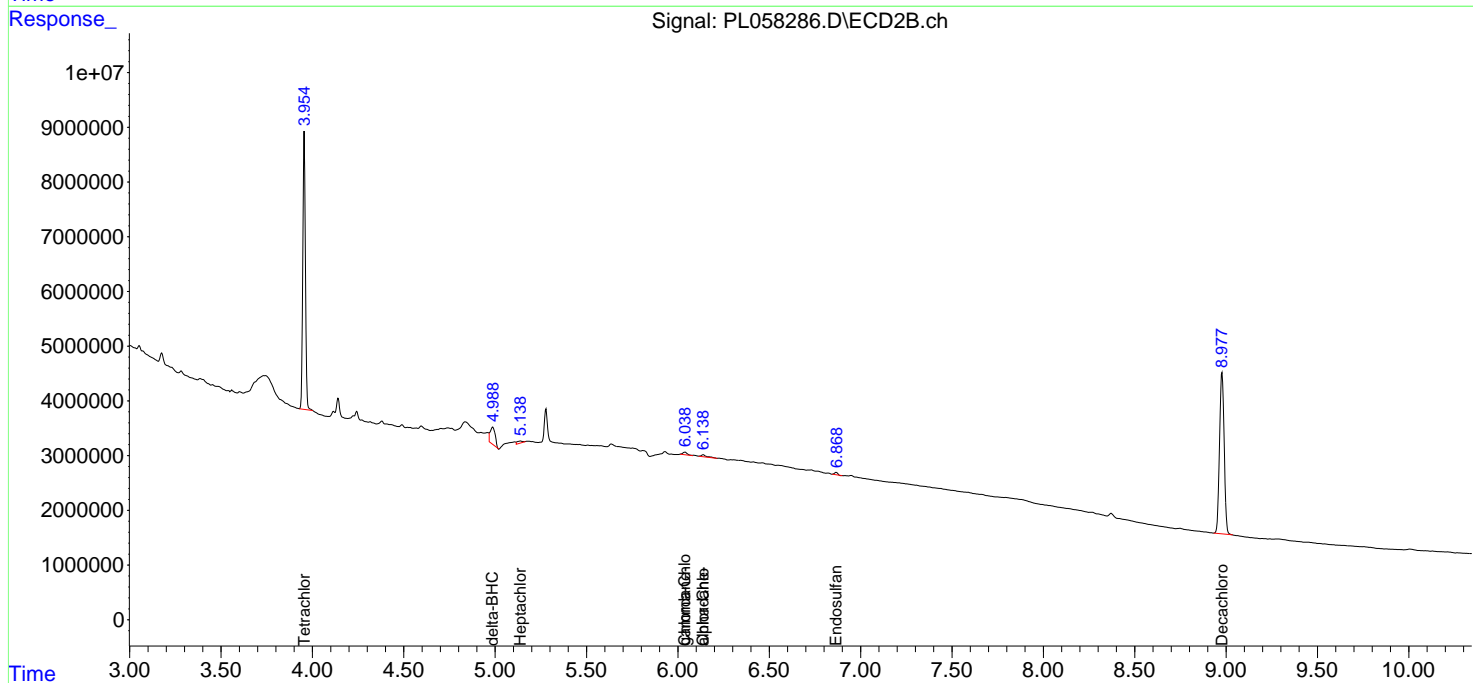
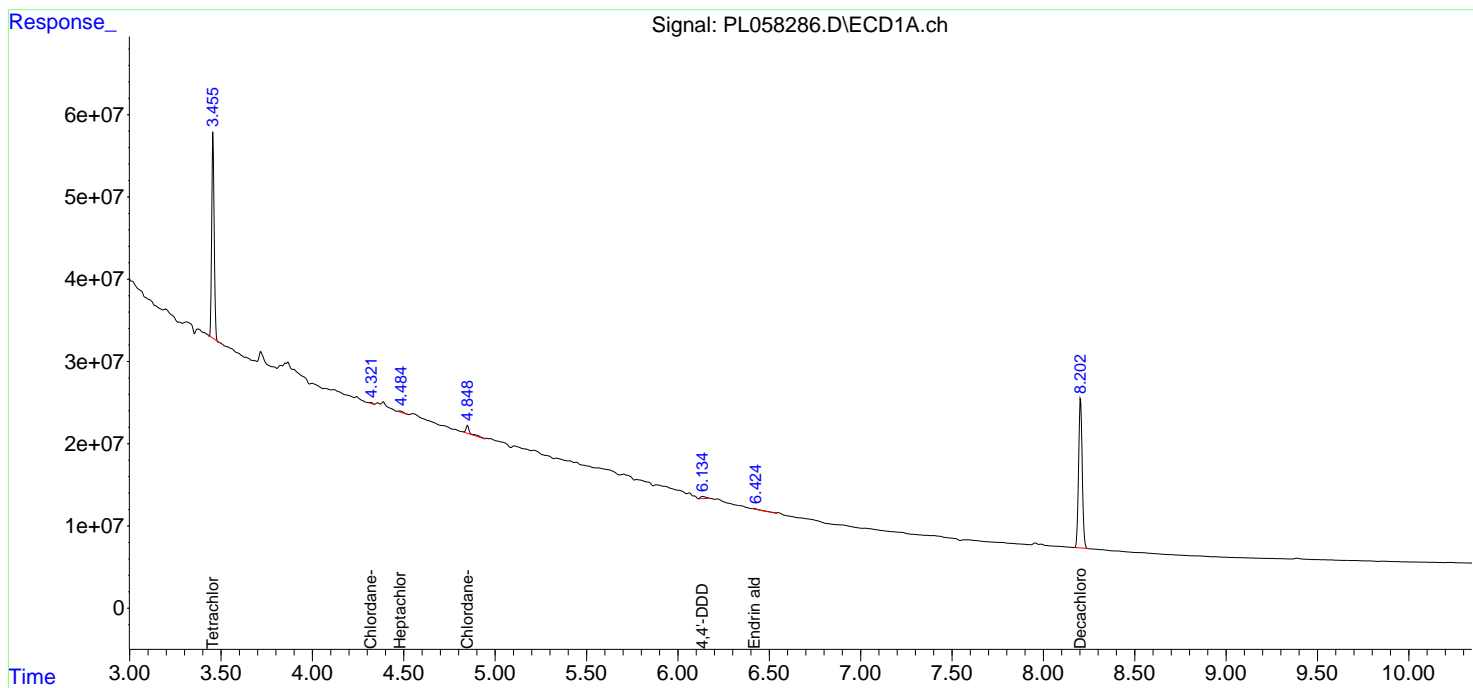
(f)=RT Delta > 1/2 Window (#)=Amounts differ by > 25% (m)=manual int.

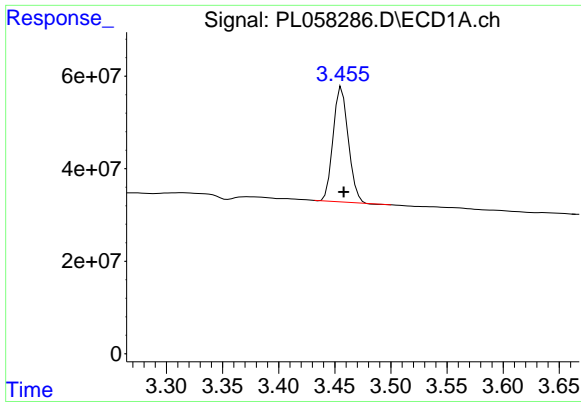
Data Path : Z:\pestpcbsrv\HPCHEM1\ECD_L\Data\PL042120\
 Data File : PL058286.D
 Signal(s) : Signal #1: ECD1A.ch Signal #2: ECD2B.ch
 Acq On : 22 Apr 2020 03:40
 Operator : AJ\MA
 Sample : L2339-03
 Misc :
 ALS Vial : 52 Sample Multiplier: 1

Instrument :
 ECD_L
 ClientSampled :
 BIN-4

Integration File signal 1: autoint1.e
 Integration File signal 2: autoint2.e
 Quant Time: Apr 22 04:33:35 2020
 Quant Method : Z:\pestpcbsrv\HPCHEM1\ECD_L\methods\PL040320.M
 Quant Title : GC Extractables
 QLast Update : Sat Apr 04 06:41:11 2020
 Response via : Initial Calibration
 Integrator: ChemStation

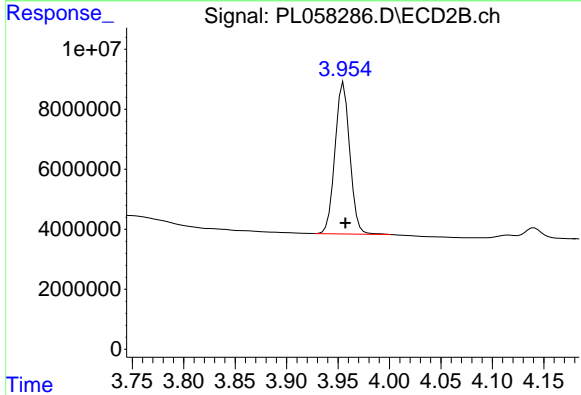
Volume Inj. : 1 µl
 Signal #1 Phase : ZB-MR2 Signal #2 Phase: ZB-MR1
 Signal #1 Info : 30M x 0.32mm x0.2 Signal #2 Info : 30M x 0.32mm x0.5µm



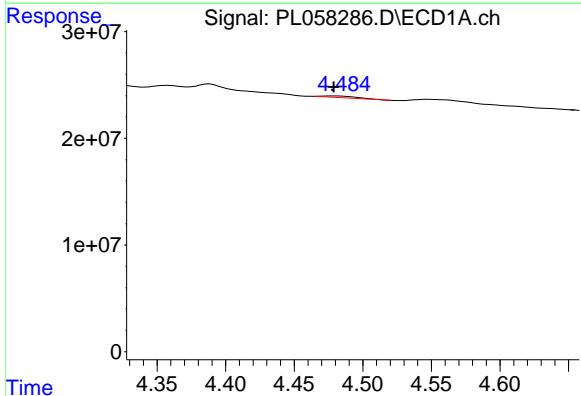


#1 Tetrachloro-m-xylene
 R.T.: 3.456 min
 Delta R.T.: -0.002 min
 Response: 233213934
 Conc: 23.13 ng/ml

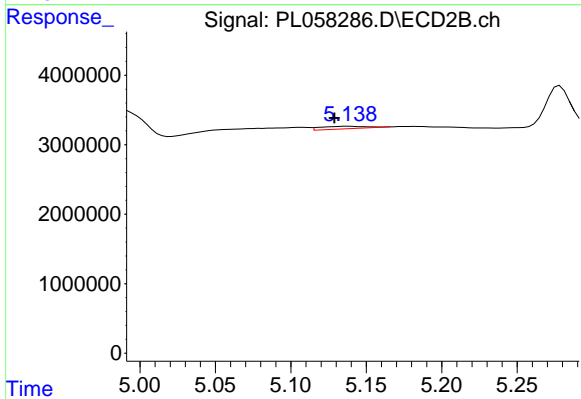
Instrument :
 ECD_L
 ClientSampleId :
 BIN-4



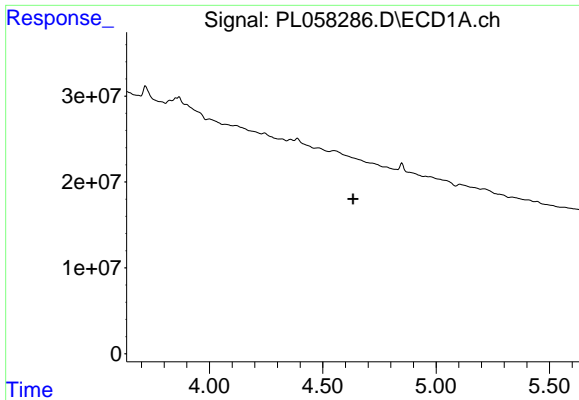
#1 Tetrachloro-m-xylene
 R.T.: 3.955 min
 Delta R.T.: -0.002 min
 Response: 50511907
 Conc: 23.28 ng/ml



#4 Heptachlor
 R.T.: 4.479 min
 Delta R.T.: 0.000 min
 Response: 1006633
 Conc: 0.06 ng/ml

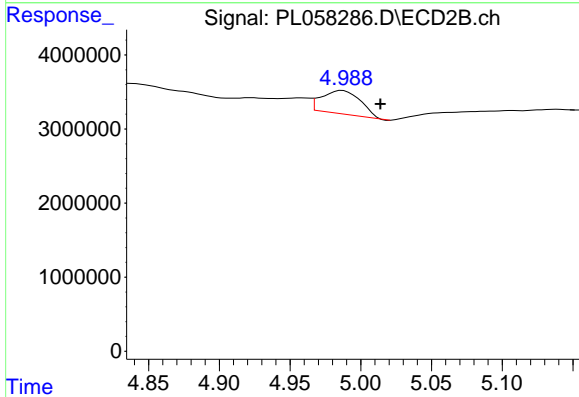


#4 Heptachlor
 R.T.: 5.139 min
 Delta R.T.: 0.010 min
 Response: 643988
 Conc: 0.19 ng/ml

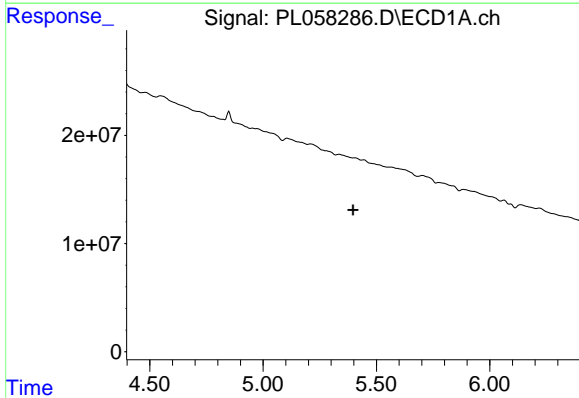


#7 delta-BHC
 R.T.: 0.000 min
 Exp R.T. : 4.634 min
 Response: 0
 Conc: N.D.

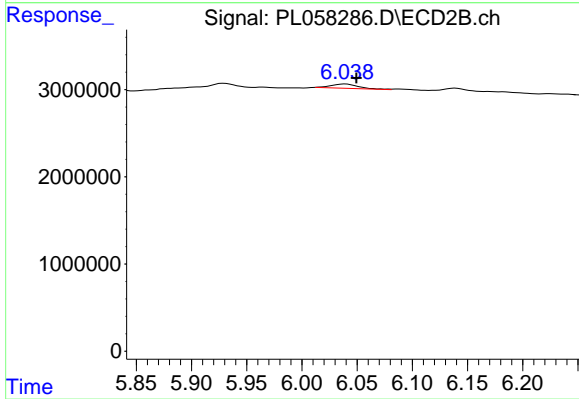
Instrument :
 ECD_L
 ClientSampled :
 BIN-4



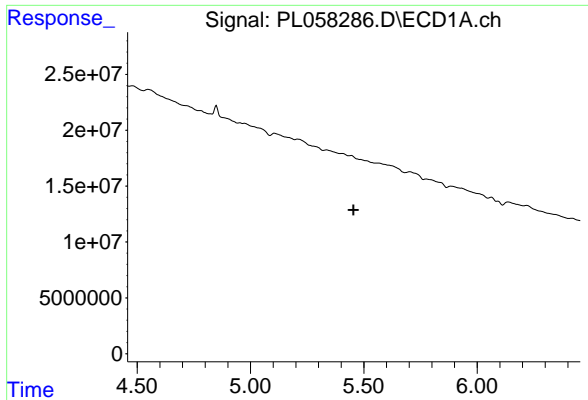
#7 delta-BHC
 R.T.: 4.987 min
 Delta R.T.: -0.027 min
 Response: 6049238
 Conc: 4.35 ng/ml



#10 gamma-Chlordane
 R.T.: 0.000 min
 Exp R.T. : 5.397 min
 Response: 0
 Conc: N.D.

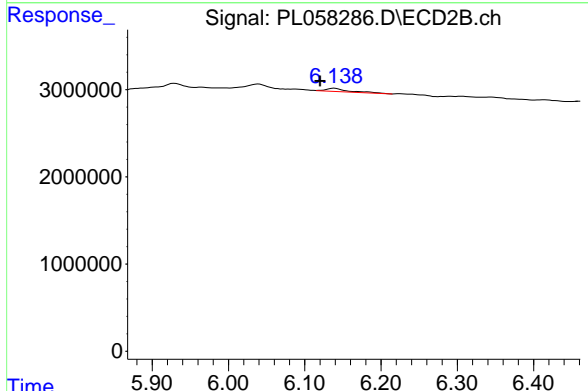


#10 gamma-Chlordane
 R.T.: 6.040 min
 Delta R.T.: -0.010 min
 Response: 820244
 Conc: 0.25 ng/ml

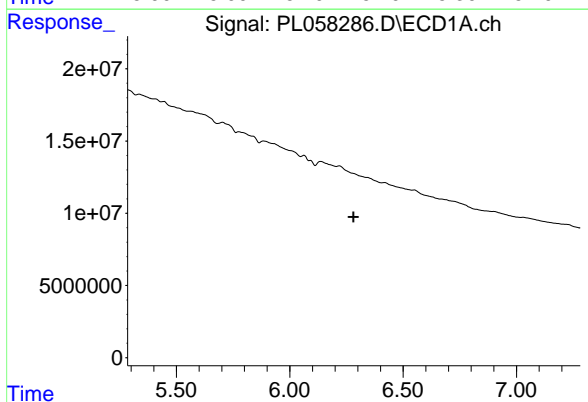


#11 alpha-Chlordane
 R.T.: 5.446 min
 Delta R.T.: -0.008 min
 Response: -2012660
 Conc: N.D.

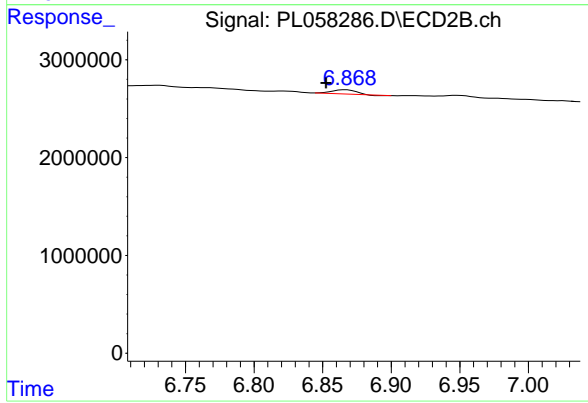
Instrument :
 ECD_L
 ClientSampleId :
 BIN-4



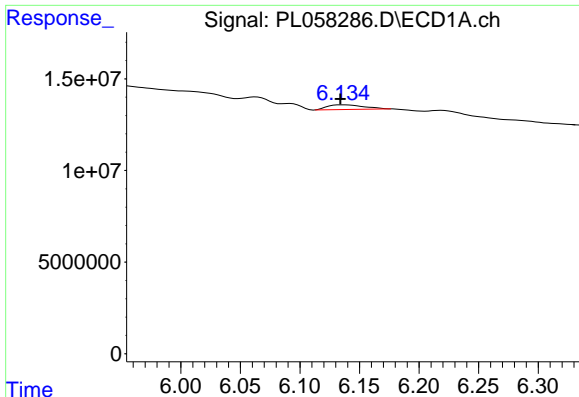
#11 alpha-Chlordane
 R.T.: 6.139 min
 Delta R.T.: 0.019 min
 Response: 807682
 Conc: 0.25 ng/ml



#15 Endosulfan II
 R.T.: 0.000 min
 Exp R.T. : 6.282 min
 Response: 0
 Conc: N.D.



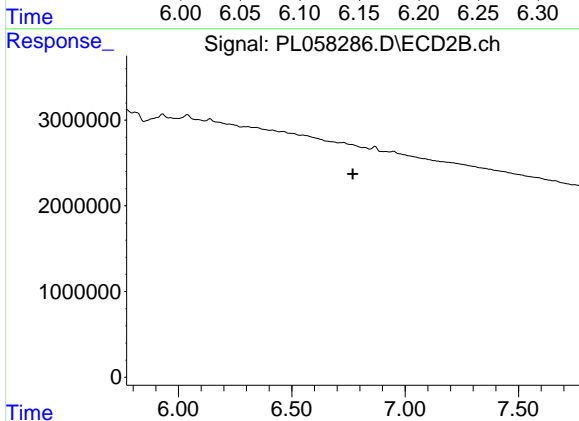
#15 Endosulfan II
 R.T.: 6.867 min
 Delta R.T.: 0.014 min
 Response: 483235
 Conc: 0.19 ng/ml



#16 4,4'-DDD

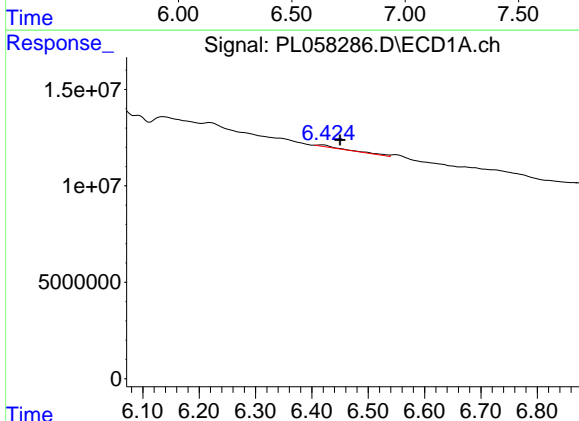
R.T.: 6.136 min
 Delta R.T.: 0.002 min
 Response: 4833046
 Conc: 0.48 ng/ml

Instrument :
 ECD_L
 ClientSampled :
 BIN-4



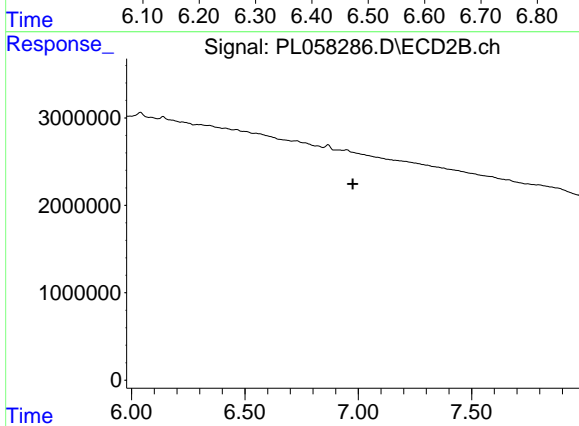
#16 4,4'-DDD

R.T.: 0.000 min
 Exp R.T. : 6.769 min
 Response: 0
 Conc: N.D.



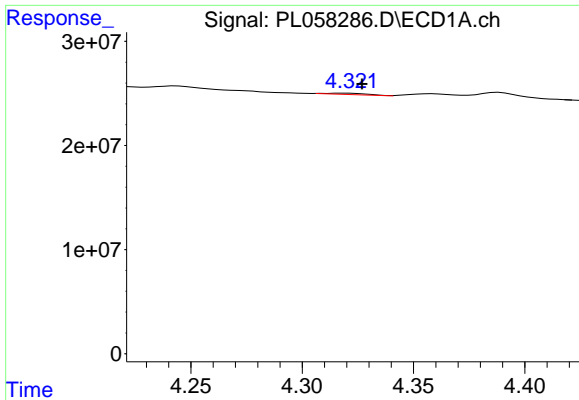
#18 Endrin aldehyde

R.T.: 6.420 min
 Delta R.T.: -0.030 min
 Response: 3235543
 Conc: 0.35 ng/ml



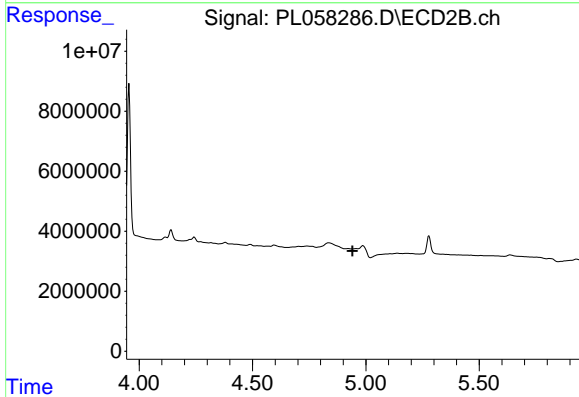
#18 Endrin aldehyde

R.T.: 0.000 min
 Exp R.T. : 6.976 min
 Response: 0
 Conc: N.D.

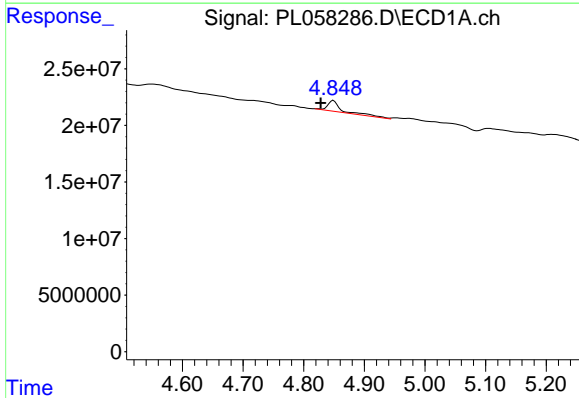


#23 Chlordane-1
 R.T.: 4.319 min
 Delta R.T.: -0.008 min
 Response: 1593007
 Conc: 4.31 ng/ml

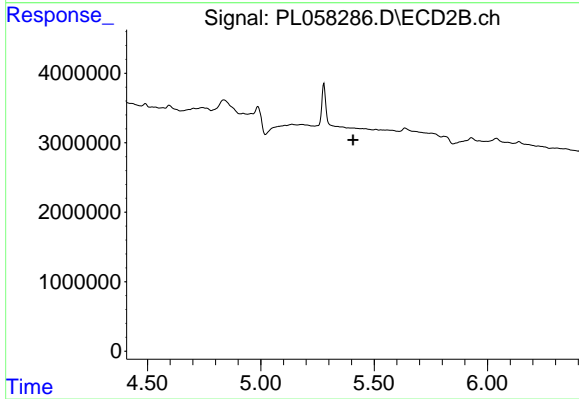
Instrument :
 ECD_L
 ClientSampled :
 BIN-4



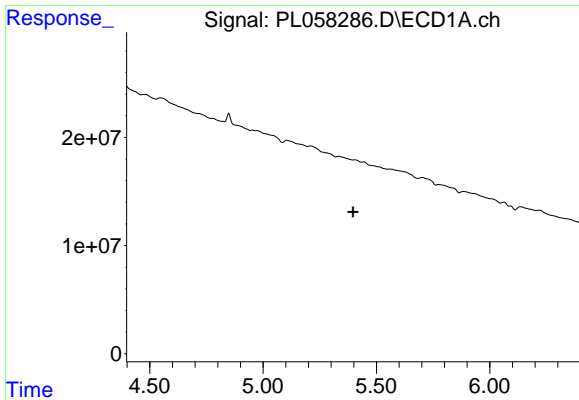
#23 Chlordane-1
 R.T.: 0.000 min
 Exp R.T. : 4.942 min
 Response: 0
 Conc: N.D.



#24 Chlordane-2
 R.T.: 4.849 min
 Delta R.T.: 0.021 min
 Response: 15961844
 Conc: 39.54 ng/ml



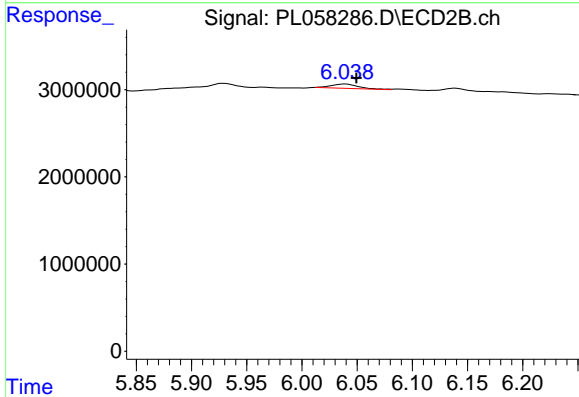
#24 Chlordane-2
 R.T.: 0.000 min
 Exp R.T. : 5.407 min
 Response: 0
 Conc: N.D.



#25 Chlordane-3

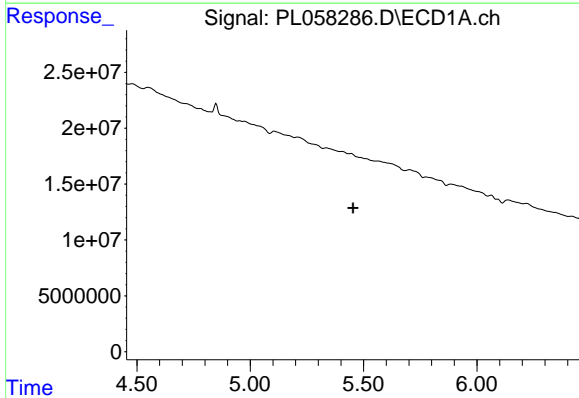
R.T.: 0.000 min
 Exp R.T.: 5.398 min
 Response: 0
 Conc: N.D.

Instrument :
 ECD_L
 ClientSampleId :
 BIN-4



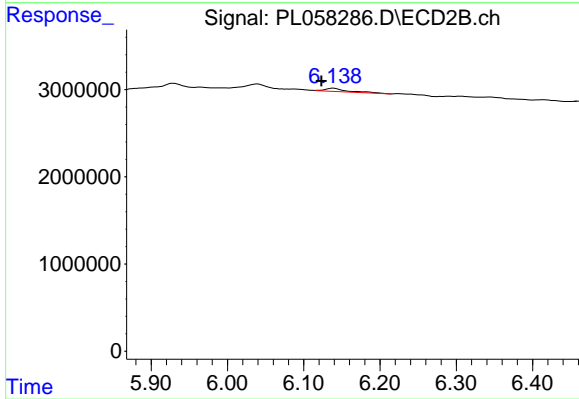
#25 Chlordane-3

R.T.: 6.040 min
 Delta R.T.: -0.010 min
 Response: 820244
 Conc: 1.90 ng/ml



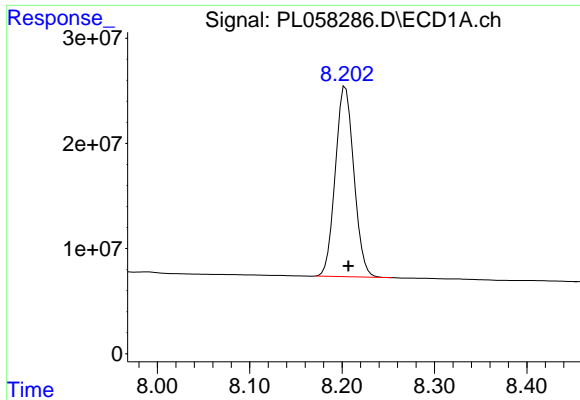
#26 Chlordane-4

R.T.: 5.446 min
 Delta R.T.: -0.008 min
 Response: -2012660
 Conc: N.D.



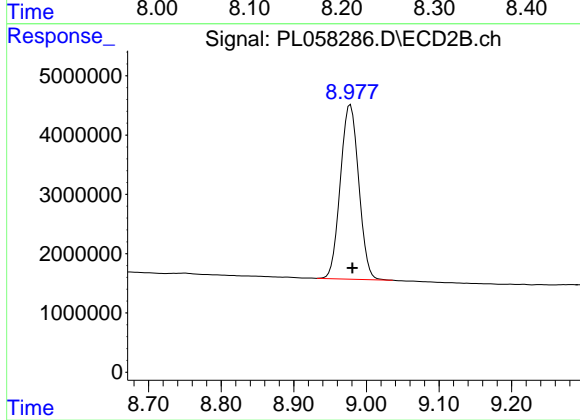
#26 Chlordane-4

R.T.: 6.139 min
 Delta R.T.: 0.016 min
 Response: 807682
 Conc: 1.54 ng/ml



#28 Decachlorobiphenyl
R.T.: 8.204 min
Delta R.T.: -0.003 min
Response: 252484499
Conc: 24.49 ng/ml

Instrument :
ECD_L
ClientSampled :
BIN-4



#28 Decachlorobiphenyl
R.T.: 8.978 min
Delta R.T.: -0.003 min
Response: 51759934
Conc: 23.17 ng/ml