

Data Path : Z:\pestpcbsrv\HPCHEM1\ECD_L\Data\PL042219\
 Data File : PL047626.D
 Signal(s) : Signal #1: ECD1A.ch Signal #2: ECD2B.ch
 Acq On : 22 Apr 2019 18:24
 Operator : AJ\SJ
 Sample : K2515-11
 Misc :
 ALS Vial : 37 Sample Multiplier: 1

Instrument :
 ECD_L
 ClientSampleId :
 TP-9

Integration File signal 1: autoint1.e
 Integration File signal 2: autoint2.e
 Quant Time: Apr 23 01:08:29 2019
 Quant Method : Z:\pestpcbsrv\HPCHEM1\ECD_L\methods\PL041919.M
 Quant Title : GC Extractables
 QLast Update : Fri Apr 19 16:51:53 2019
 Response via : Initial Calibration
 Integrator: ChemStation

Volume Inj. : 1 µl
 Signal #1 Phase : ZB-MR2 Signal #2 Phase: ZB-MR1
 Signal #1 Info : 30M x 0.32mm x0.2 Signal #2 Info : 30M x 0.32mm x0.5µm

Compound	RT#1	RT#2	Resp#1	Resp#2	ng/ml	ng/ml

System Monitoring Compounds						
1) SA Tetrachlo...	3.331	3.940	185.0E6	49661346	20.855	18.604
28) SA Decachlor...	8.002	8.973	123.4E6	36751013	12.215	12.107

Target Compounds

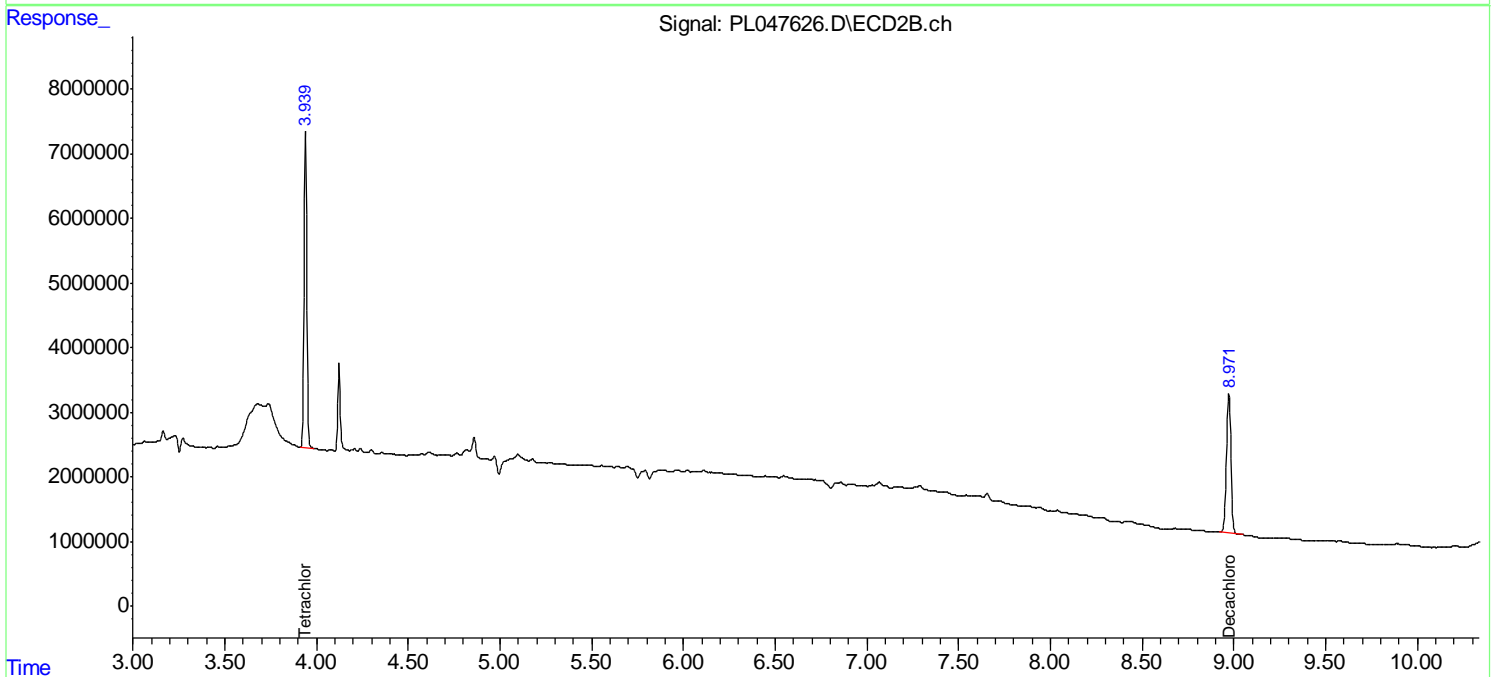
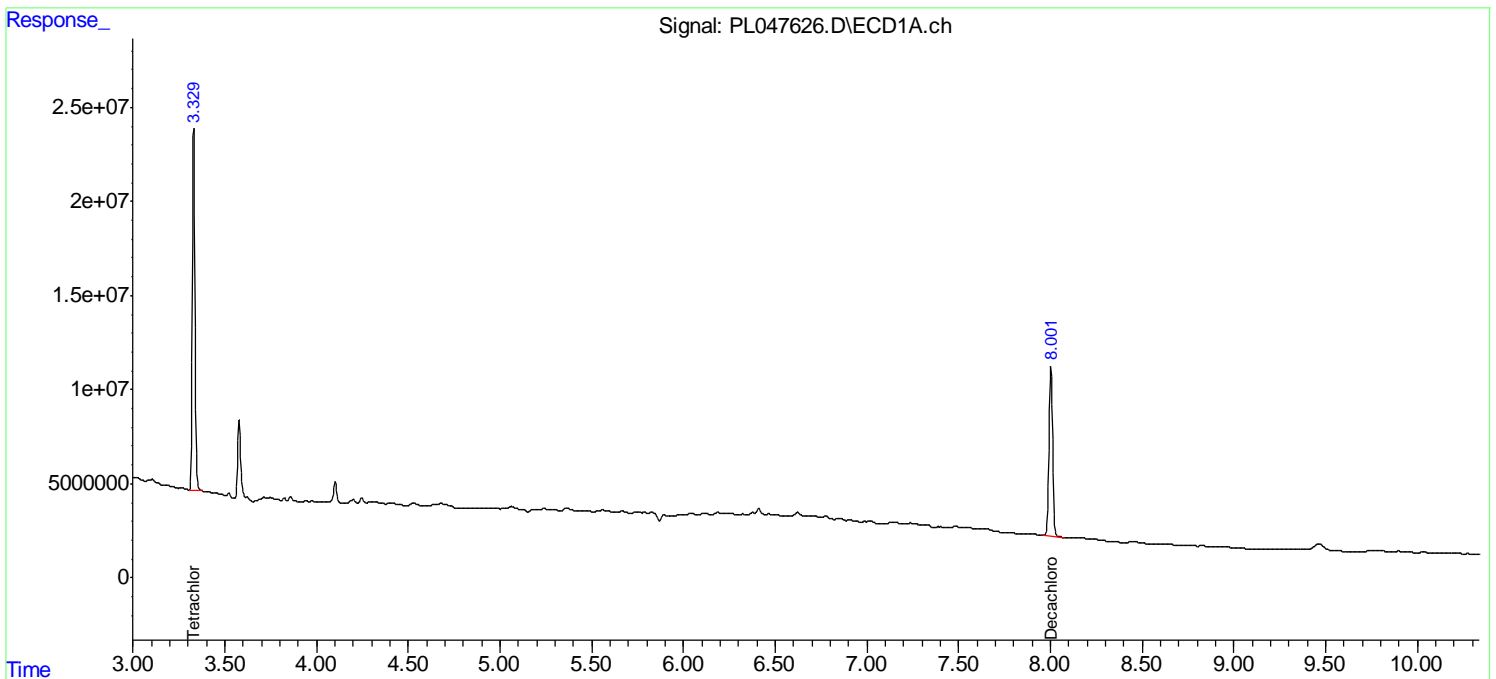
(f)=RT Delta > 1/2 Window (#)=Amounts differ by > 25% (m)=manual int.

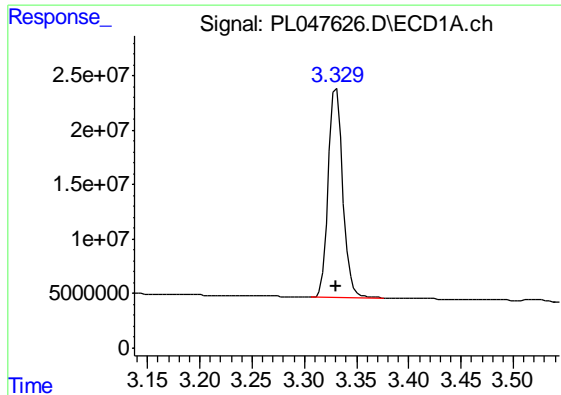
Data Path : Z:\pestpcbsrv\HPCHEM1\ECD_L\Data\PL042219\
 Data File : PL047626.D
 Signal(s) : Signal #1: ECD1A.ch Signal #2: ECD2B.ch
 Acq On : 22 Apr 2019 18:24
 Operator : AJ\SJ
 Sample : K2515-11
 Misc :
 ALS Vial : 37 Sample Multiplier: 1

Instrument :
 ECD_L
 ClientSampled :
 TP-9

Integration File signal 1: autoint1.e
 Integration File signal 2: autoint2.e
 Quant Time: Apr 23 01:08:29 2019
 Quant Method : Z:\pestpcbsrv\HPCHEM1\ECD_L\methods\PL041919.M
 Quant Title : GC Extractables
 QLast Update : Fri Apr 19 16:51:53 2019
 Response via : Initial Calibration
 Integrator: ChemStation

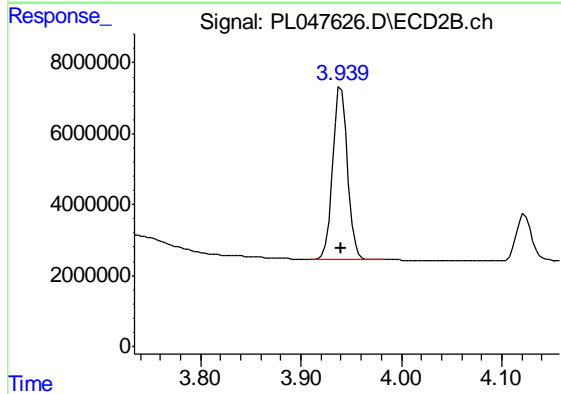
Volume Inj. : 1 µl
 Signal #1 Phase : ZB-MR2 Signal #2 Phase: ZB-MR1
 Signal #1 Info : 30M x 0.32mm x0.2 Signal #2 Info : 30M x 0.32mm x0.5µm



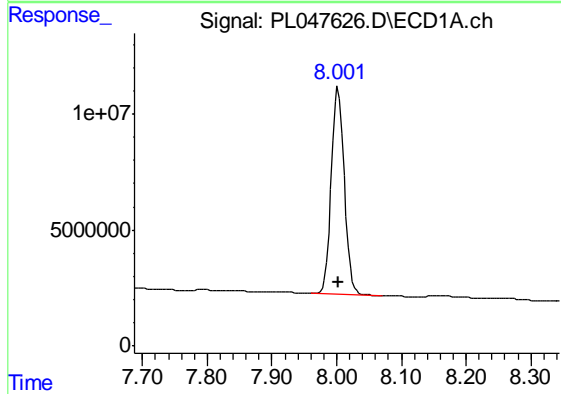


#1 Tetrachloro-m-xylene
 R.T.: 3.331 min
 Delta R.T.: 0.000 min
 Response: 185044391
 Conc: 20.86 ng/ml

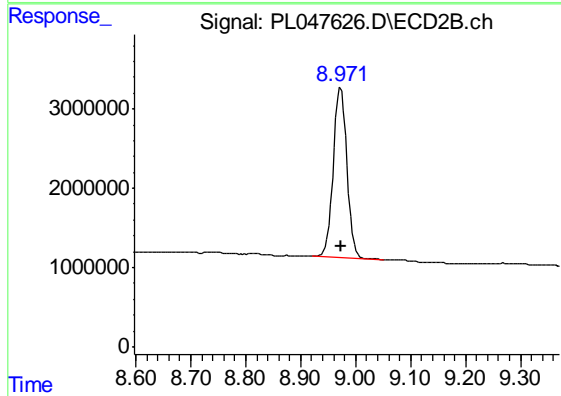
Instrument :
 ECD_L
 ClientSampled :
 TP-9



#1 Tetrachloro-m-xylene
 R.T.: 3.940 min
 Delta R.T.: 0.000 min
 Response: 49661346
 Conc: 18.60 ng/ml



#28 Decachlorobiphenyl
 R.T.: 8.002 min
 Delta R.T.: 0.000 min
 Response: 123387809
 Conc: 12.21 ng/ml



#28 Decachlorobiphenyl
 R.T.: 8.973 min
 Delta R.T.: -0.002 min
 Response: 36751013
 Conc: 12.11 ng/ml