

Data Path : Z:\pestpcbsrv\HPCHEM1\ECD\_L\Data\PL042220\  
 Data File : PL058317.D  
 Signal(s) : Signal #1: ECD1A.ch Signal #2: ECD2B.ch  
 Acq On : 22 Apr 2020 20:25  
 Operator : AJ\MA  
 Sample : L2330-20  
 Misc :  
 ALS Vial : 27 Sample Multiplier: 1

Instrument :  
 ECD\_L  
 ClientSampleId :  
 WB-TWP-3

Integration File signal 1: autoint1.e  
 Integration File signal 2: autoint2.e  
 Quant Time: Apr 23 01:00:54 2020  
 Quant Method : Z:\pestpcbsrv\HPCHEM1\ECD\_L\methods\PL040320.M  
 Quant Title : GC Extractables  
 QLast Update : Sat Apr 04 06:41:11 2020  
 Response via : Initial Calibration  
 Integrator: ChemStation

Volume Inj. : 1 µl  
 Signal #1 Phase : ZB-MR2 Signal #2 Phase: ZB-MR1  
 Signal #1 Info : 30M x 0.32mm x0.2 Signal #2 Info : 30M x 0.32mm x0.5µm

Compound	RT#1	RT#2	Resp#1	Resp#2	ng/ml	ng/ml
-----						
System Monitoring Compounds						
1) SA Tetrachlo...	3.456	3.955	201.3E6	43188225	19.970	19.901
28) SA Decachlor...	8.203	8.976	169.6E6	35981838	16.457	16.108
Target Compounds						
2) A alpha-BHC	3.882	0.000	2590665	0	0.149	N.D. #
3) MA gamma-BHC...	4.182	0.000	5837453	0	0.402	N.D. #
4) MA Heptachlor	0.000	5.145f	0	3142447	N.D.	0.936 #
7) B delta-BHC	0.000	4.985f	0	7354025	N.D.	4.848 #
8) B Heptachlo...	0.000	5.810	0	1330877	N.D.	0.493 #
13) MA Dieldrin	5.766f	0.000	2537175	0	0.195	N.D. #
15) B Endosulfa...	0.000	6.864	0	741288	N.D.	0.286 #
18) B Endrin al...	6.461	0.000	22781322	0	2.437	N.D. #
19) B Endosulfa...	6.682f	0.000	1964212	0	0.193	N.D. #
23) Chlordane-1	4.321	0.000	1729441	0	4.676	N.D. #
24) Chlordane-2	4.825	0.000	5339647	0	13.226	N.D. #
-----						

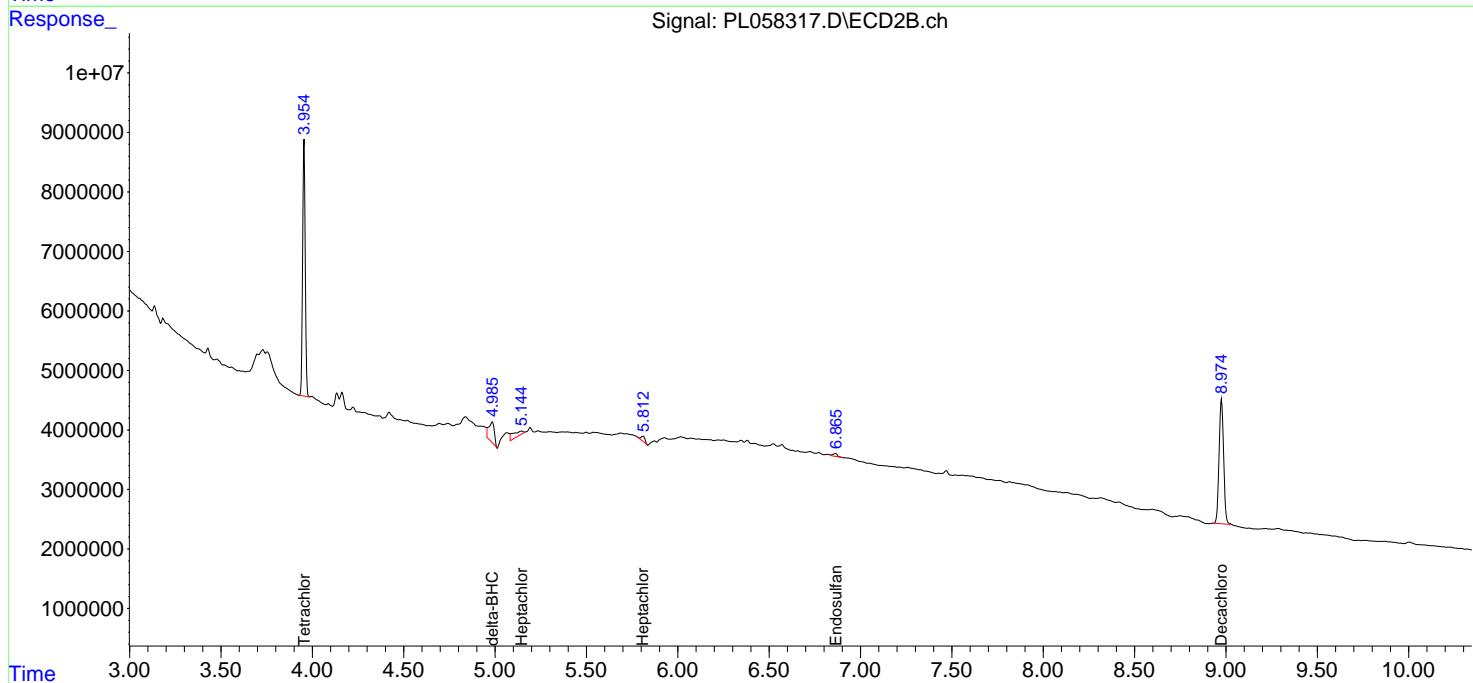
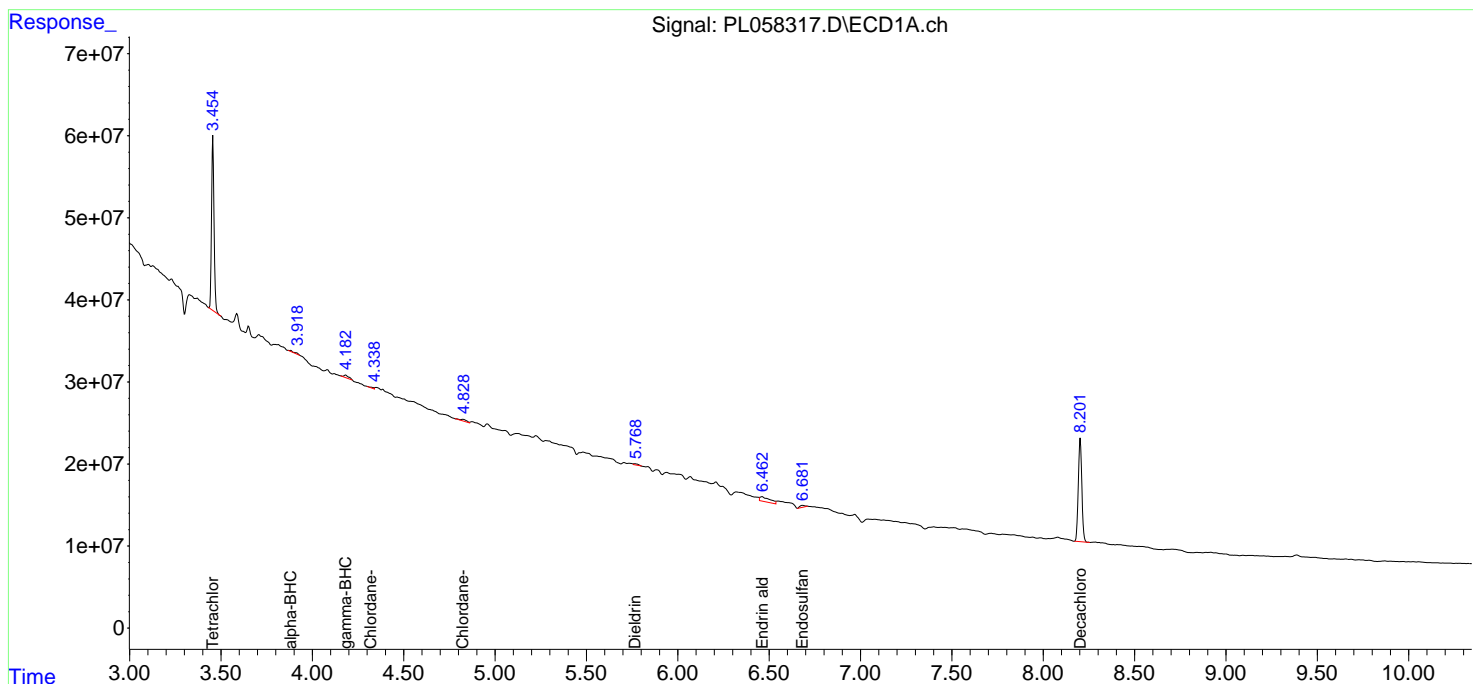
(f)=RT Delta > 1/2 Window (#)=Amounts differ by > 25% (m)=manual int.

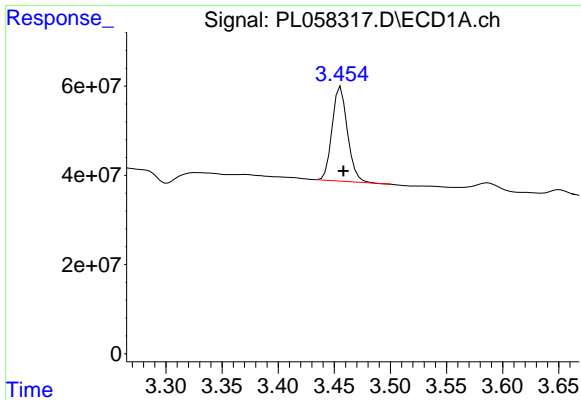
Data Path : Z:\pestpcbsrv\HPCHEM1\ECD\_L\Data\PL042220\  
 Data File : PL058317.D  
 Signal(s) : Signal #1: ECD1A.ch Signal #2: ECD2B.ch  
 Acq On : 22 Apr 2020 20:25  
 Operator : AJ\MA  
 Sample : L2330-20  
 Misc :  
 ALS Vial : 27 Sample Multiplier: 1

Instrument :  
 ECD\_L  
 ClientSampled :  
 WB-TWP-3

Integration File signal 1: autoint1.e  
 Integration File signal 2: autoint2.e  
 Quant Time: Apr 23 01:00:54 2020  
 Quant Method : Z:\pestpcbsrv\HPCHEM1\ECD\_L\methods\PL040320.M  
 Quant Title : GC Extractables  
 QLast Update : Sat Apr 04 06:41:11 2020  
 Response via : Initial Calibration  
 Integrator: ChemStation

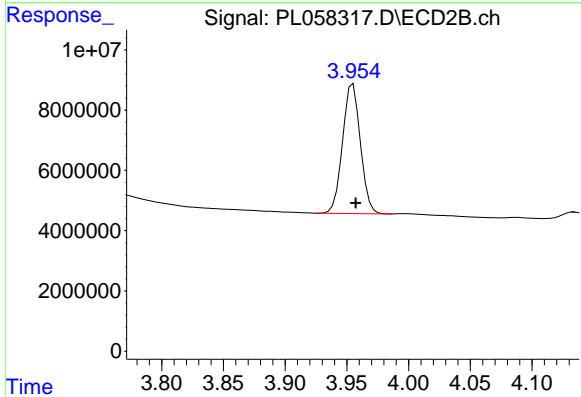
Volume Inj. : 1 µl  
 Signal #1 Phase : ZB-MR2 Signal #2 Phase: ZB-MR1  
 Signal #1 Info : 30M x 0.32mm x0.2 Signal #2 Info : 30M x 0.32mm x0.5µm



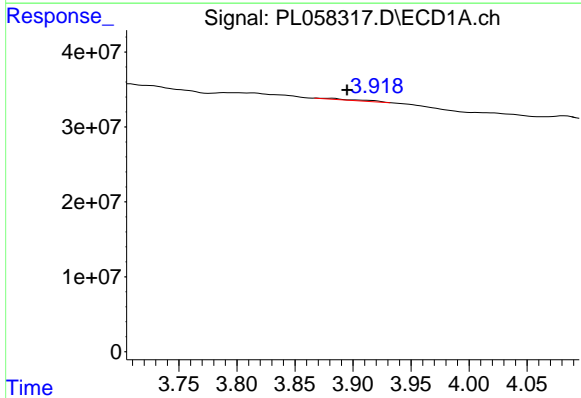


#1 Tetrachloro-m-xylene  
 R.T.: 3.456 min  
 Delta R.T.: -0.002 min  
 Response: 201318571  
 Conc: 19.97 ng/ml

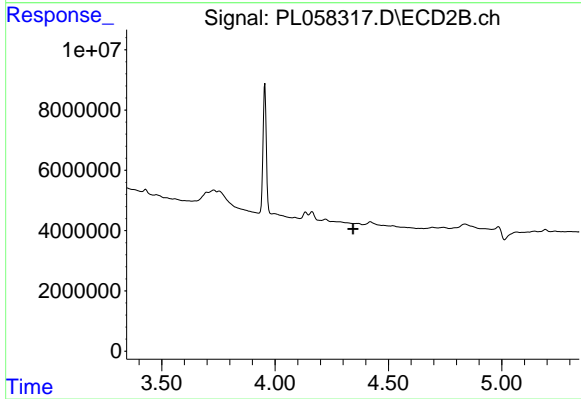
Instrument :  
 ECD\_L  
 ClientSampleId :  
 WB-TWP-3



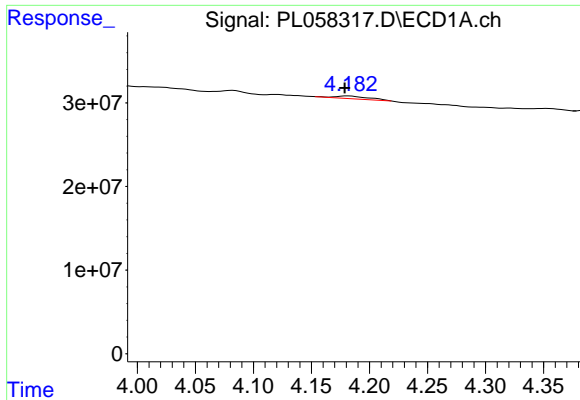
#1 Tetrachloro-m-xylene  
 R.T.: 3.955 min  
 Delta R.T.: -0.002 min  
 Response: 43188225  
 Conc: 19.90 ng/ml



#2 alpha-BHC  
 R.T.: 3.882 min  
 Delta R.T.: -0.013 min  
 Response: 2590665  
 Conc: 0.15 ng/ml

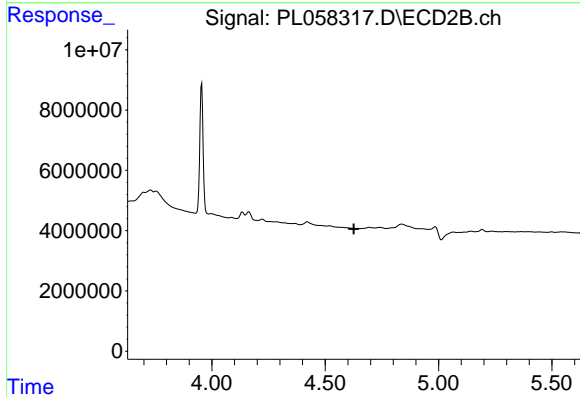


#2 alpha-BHC  
 R.T.: 0.000 min  
 Exp R.T.: 4.345 min  
 Response: 0  
 Conc: N.D.

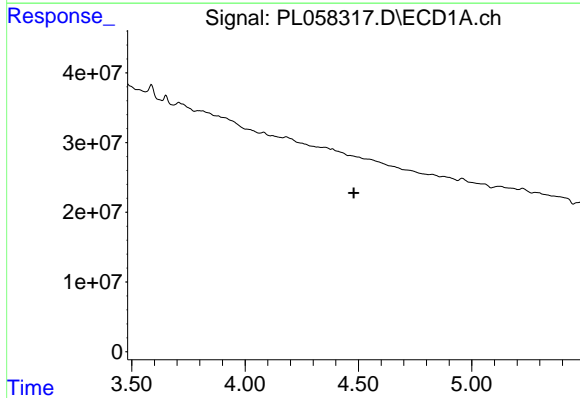


#3 gamma-BHC (Lindane)  
 R.T.: 4.182 min  
 Delta R.T.: 0.003 min  
 Response: 5837453  
 Conc: 0.40 ng/ml

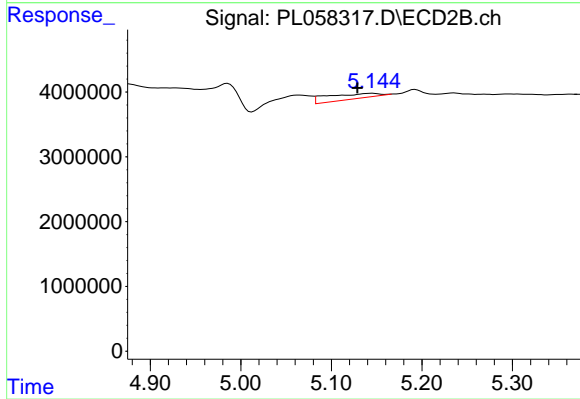
Instrument :  
 ECD\_L  
 ClientSampleId :  
 WB-TWP-3



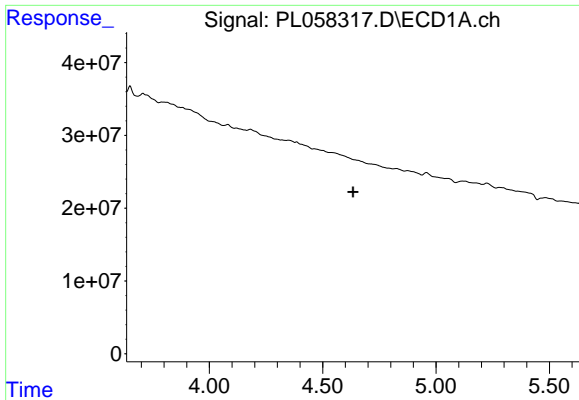
#3 gamma-BHC (Lindane)  
 R.T.: 0.000 min  
 Exp R.T. : 4.627 min  
 Response: 0  
 Conc: N.D.



#4 Heptachlor  
 R.T.: 0.000 min  
 Exp R.T. : 4.479 min  
 Response: 0  
 Conc: N.D.

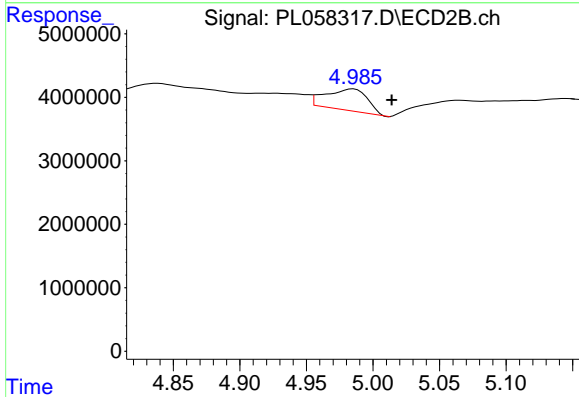


#4 Heptachlor  
 R.T.: 5.145 min  
 Delta R.T.: 0.016 min  
 Response: 3142447  
 Conc: 0.94 ng/ml

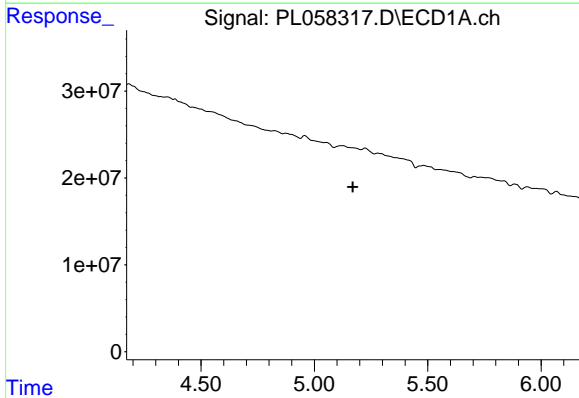


#7 delta-BHC  
 R.T.: 0.000 min  
 Exp R.T.: 4.634 min  
 Response: 0  
 Conc: N.D.

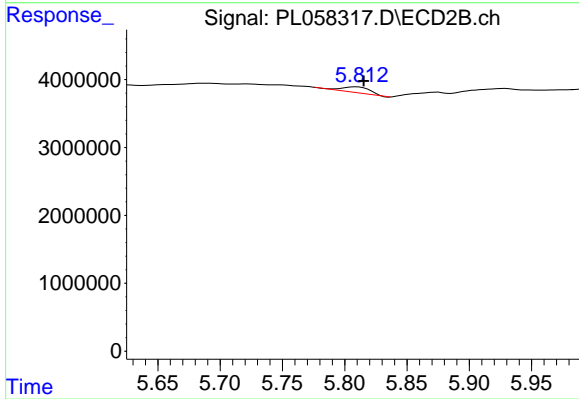
Instrument :  
 ECD\_L  
 ClientSampleId :  
 WB-TWP-3



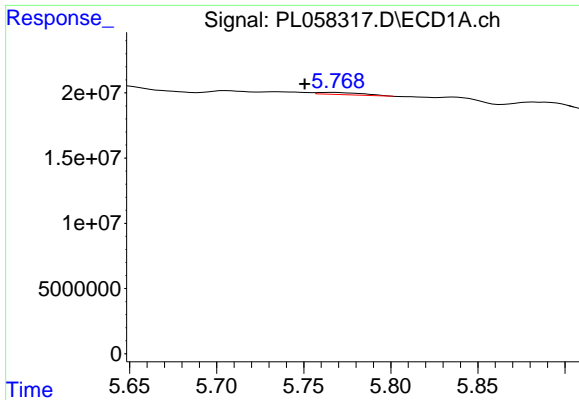
#7 delta-BHC  
 R.T.: 4.985 min  
 Delta R.T.: -0.029 min  
 Response: 7354025  
 Conc: 4.85 ng/ml



#8 Heptachlor epoxide  
 R.T.: 0.000 min  
 Exp R.T.: 5.169 min  
 Response: 0  
 Conc: N.D.

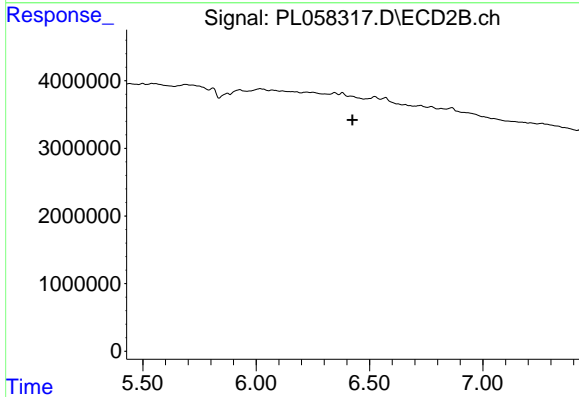


#8 Heptachlor epoxide  
 R.T.: 5.810 min  
 Delta R.T.: -0.006 min  
 Response: 1330877  
 Conc: 0.49 ng/ml

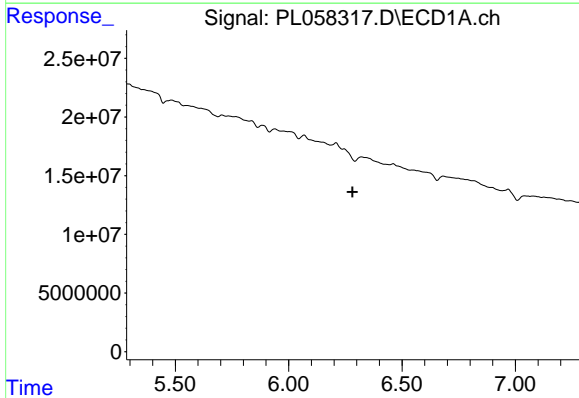


#13 Dieldrin  
 R.T.: 5.766 min  
 Delta R.T.: 0.016 min  
 Response: 2537175  
 Conc: 0.20 ng/ml

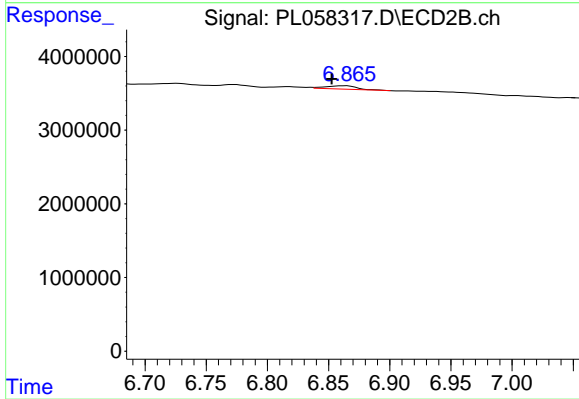
Instrument :  
 ECD\_L  
 ClientSampled :  
 WB-TWP-3



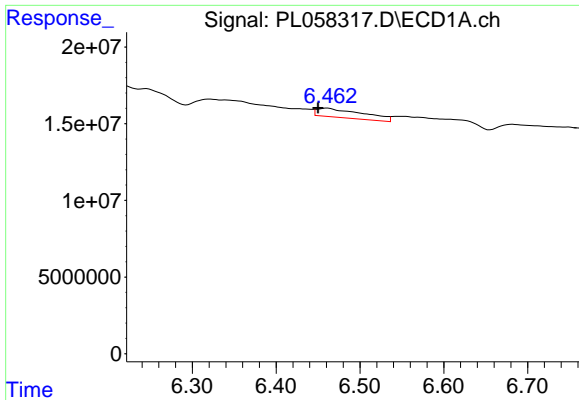
#13 Dieldrin  
 R.T.: 0.000 min  
 Exp R.T. : 6.425 min  
 Response: 0  
 Conc: N.D.



#15 Endosulfan II  
 R.T.: 0.000 min  
 Exp R.T. : 6.282 min  
 Response: 0  
 Conc: N.D.

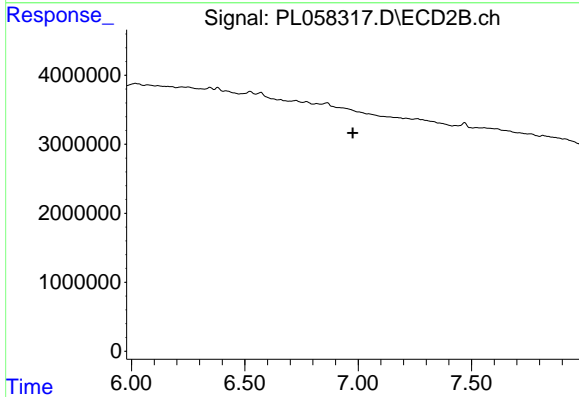


#15 Endosulfan II  
 R.T.: 6.864 min  
 Delta R.T.: 0.011 min  
 Response: 741288  
 Conc: 0.29 ng/ml

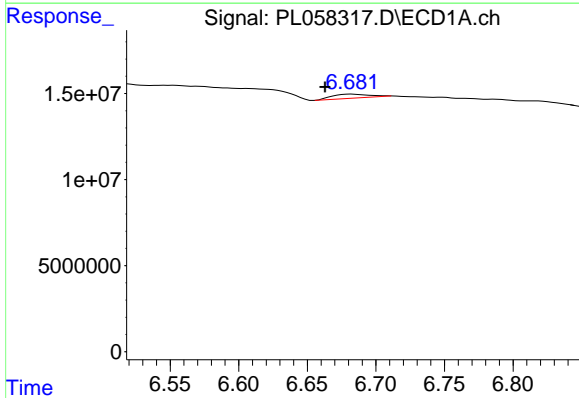


#18 Endrin aldehyde  
 R.T.: 6.461 min  
 Delta R.T.: 0.011 min  
 Response: 22781322  
 Conc: 2.44 ng/ml

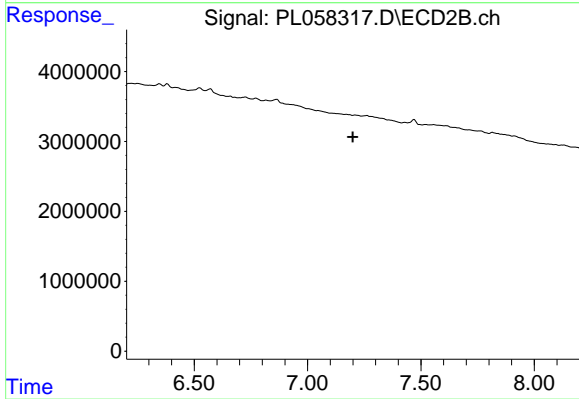
Instrument :  
 ECD\_L  
 ClientSampleId :  
 WB-TWP-3



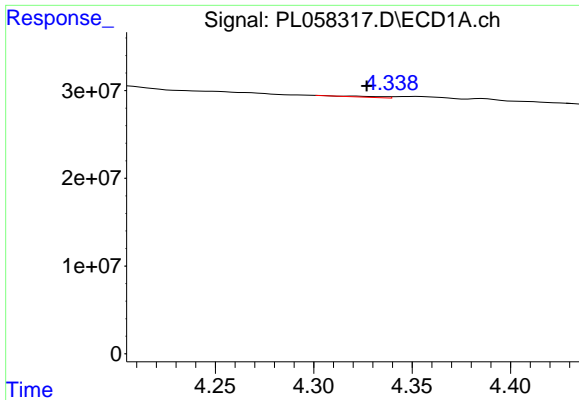
#18 Endrin aldehyde  
 R.T.: 0.000 min  
 Exp R.T. : 6.976 min  
 Response: 0  
 Conc: N.D.



#19 Endosulfan Sulfate  
 R.T.: 6.682 min  
 Delta R.T.: 0.019 min  
 Response: 1964212  
 Conc: 0.19 ng/ml

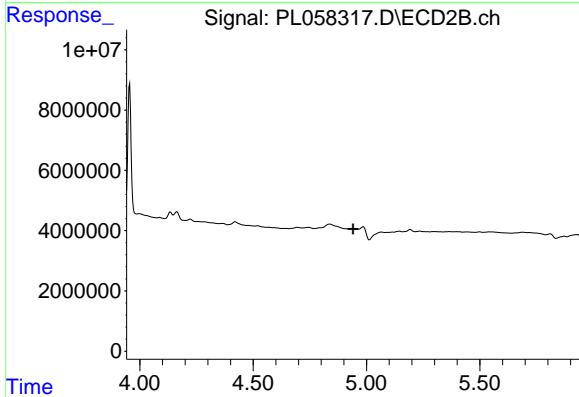


#19 Endosulfan Sulfate  
 R.T.: 0.000 min  
 Exp R.T. : 7.199 min  
 Response: 0  
 Conc: N.D.

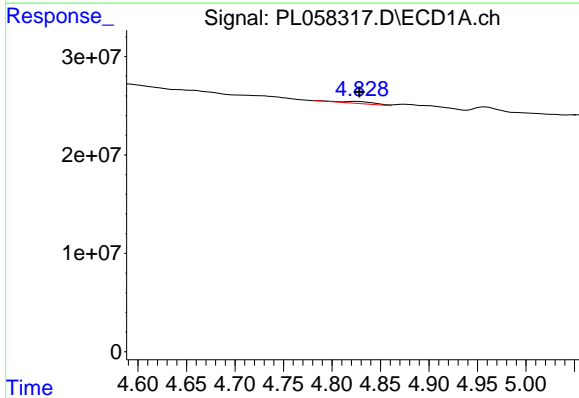


#23 Chlordane-1  
 R.T.: 4.321 min  
 Delta R.T.: -0.006 min  
 Response: 1729441  
 Conc: 4.68 ng/ml

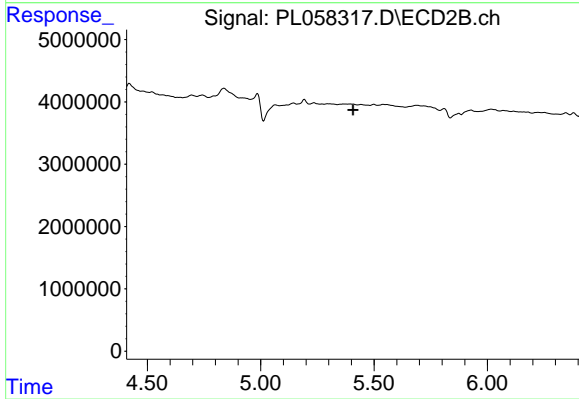
Instrument :  
 ECD\_L  
 ClientSampleId :  
 WB-TWP-3



#23 Chlordane-1  
 R.T.: 0.000 min  
 Exp R.T. : 4.942 min  
 Response: 0  
 Conc: N.D.

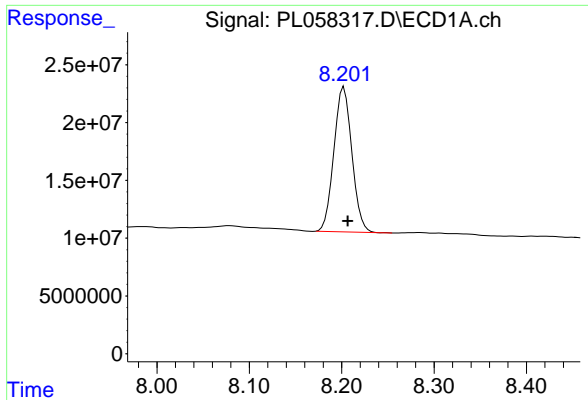


#24 Chlordane-2  
 R.T.: 4.825 min  
 Delta R.T.: -0.003 min  
 Response: 5339647  
 Conc: 13.23 ng/ml



#24 Chlordane-2  
 R.T.: 0.000 min  
 Exp R.T. : 5.407 min  
 Response: 0  
 Conc: N.D.

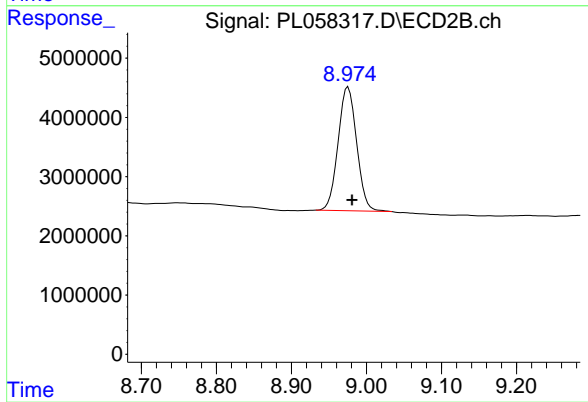




#28 Decachlorobiphenyl

R.T.: 8.203 min  
Delta R.T.: -0.004 min  
Response: 169647831  
Conc: 16.46 ng/ml

Instrument :  
ECD\_L  
ClientSampleId :  
WB-TWP-3



#28 Decachlorobiphenyl

R.T.: 8.976 min  
Delta R.T.: -0.005 min  
Response: 35981838  
Conc: 16.11 ng/ml