

Data Path : Z:\pestpcbsrv\HPCHEM1\ECD_L\Data\PL042320\
 Data File : PL058349.D
 Signal(s) : Signal #1: ECD1A.ch Signal #2: ECD2B.ch
 Acq On : 23 Apr 2020 19:22
 Operator : AJ\MA
 Sample : I.BLK
 Misc :
 ALS Vial : 2 Sample Multiplier: 1

Instrument :
 ECD_L
 ClientSampleId :
 I.BLK

Integration File signal 1: autoint1.e
 Integration File signal 2: autoint2.e
 Quant Time: Apr 24 00:56:58 2020
 Quant Method : Z:\pestpcbsrv\HPCHEM1\ECD_L\methods\PL040320.M
 Quant Title : GC Extractables
 QLast Update : Sat Apr 04 06:41:11 2020
 Response via : Initial Calibration
 Integrator: ChemStation

Volume Inj. : 1 µl
 Signal #1 Phase : ZB-MR2 Signal #2 Phase: ZB-MR1
 Signal #1 Info : 30M x 0.32mm x0.2 Signal #2 Info : 30M x 0.32mm x0.5µm

Compound	RT#1	RT#2	Resp#1	Resp#2	ng/ml	ng/ml
System Monitoring Compounds						
1) SA Tetrachlo...	3.455	3.954	201.9E6	42269193	20.029	19.478
28) SA Decachlor...	8.201	8.975	201.1E6	40202588	19.513	17.998
Target Compounds						
2) A alpha-BHC	3.896	0.000	3515171	0	0.202	N.D. #
4) MA Heptachlor	4.480	5.133	-193288	1077048	N.D.	0.321
5) MB Aldrin	4.719	5.413f	737901	155441	0.050	0.048
6) B beta-BHC	4.440	0.000	678299	0	0.107	N.D. #
7) B delta-BHC	0.000	4.985f	0	3615913	N.D.	3.413 #
8) B Heptachlo...	5.175	5.810	590220	2637840	0.044	0.977 #
9) A Endosulfan I	5.499	6.165	1466601	92739	0.120	0.031 #
10) B gamma-Chl...	5.389	6.045	3817820	247427	0.281	0.076 #
11) B alpha-Chl...	5.446	6.118	1541090	469209	0.116	0.143
12) B 4,4'-DDE	5.633	6.271	12386521	200903	0.946	0.068 #
14) MA Endrin	6.008	0.000	1861945	0	0.160	N.D. #
15) B Endosulfa...	0.000	6.867	0	798149	N.D.	0.308 #
16) A 4,4'-DDD	6.123	0.000	525664	0	0.053	N.D. #
17) MA 4,4'-DDT	6.365	7.069	4249671	116991	0.419	0.053 #
18) B Endrin al...	6.462	0.000	1457903	0	0.156	N.D. #
19) B Endosulfa...	6.677	0.000	1917899	0	0.189	N.D. #
20) A Methoxychlor	6.944f	0.000	729577	0	0.132	N.D. #
21) B Endrin ke...	7.155	0.000	112414	0	0.010	N.D. #
22) Mirex	7.322f	8.116	1326671	491797	0.162	0.267 #
23) Chlordane-1	4.352f	0.000	1918094	0	5.186	N.D. #
24) Chlordane-2	4.814	5.413	2239378	155441	5.547	1.489 #
25) Chlordane-3	5.389	6.045	3817820	247427	3.123	0.572 #
26) Chlordane-4	5.446	6.118	1541090	469209	1.482	0.894 #
27) Chlordane-5	6.316f	0.000	1436744	0	3.798	N.D. #

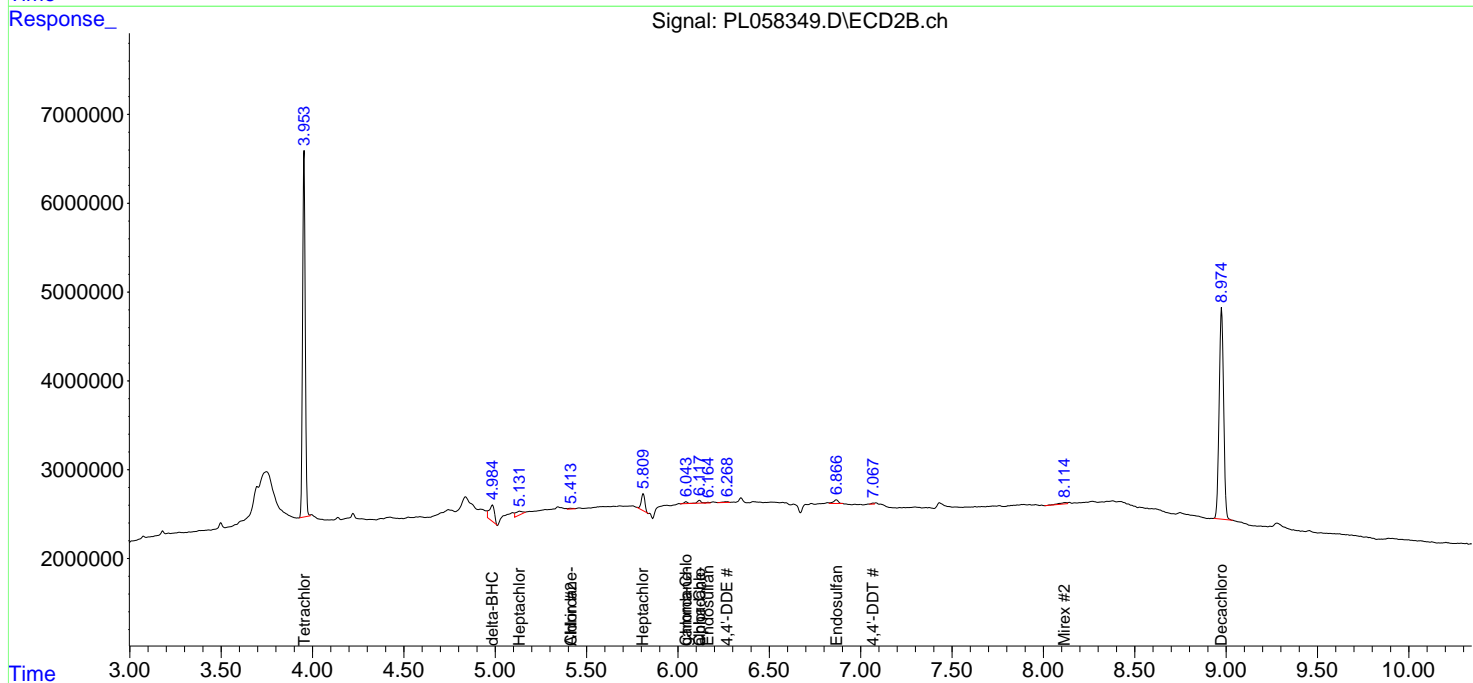
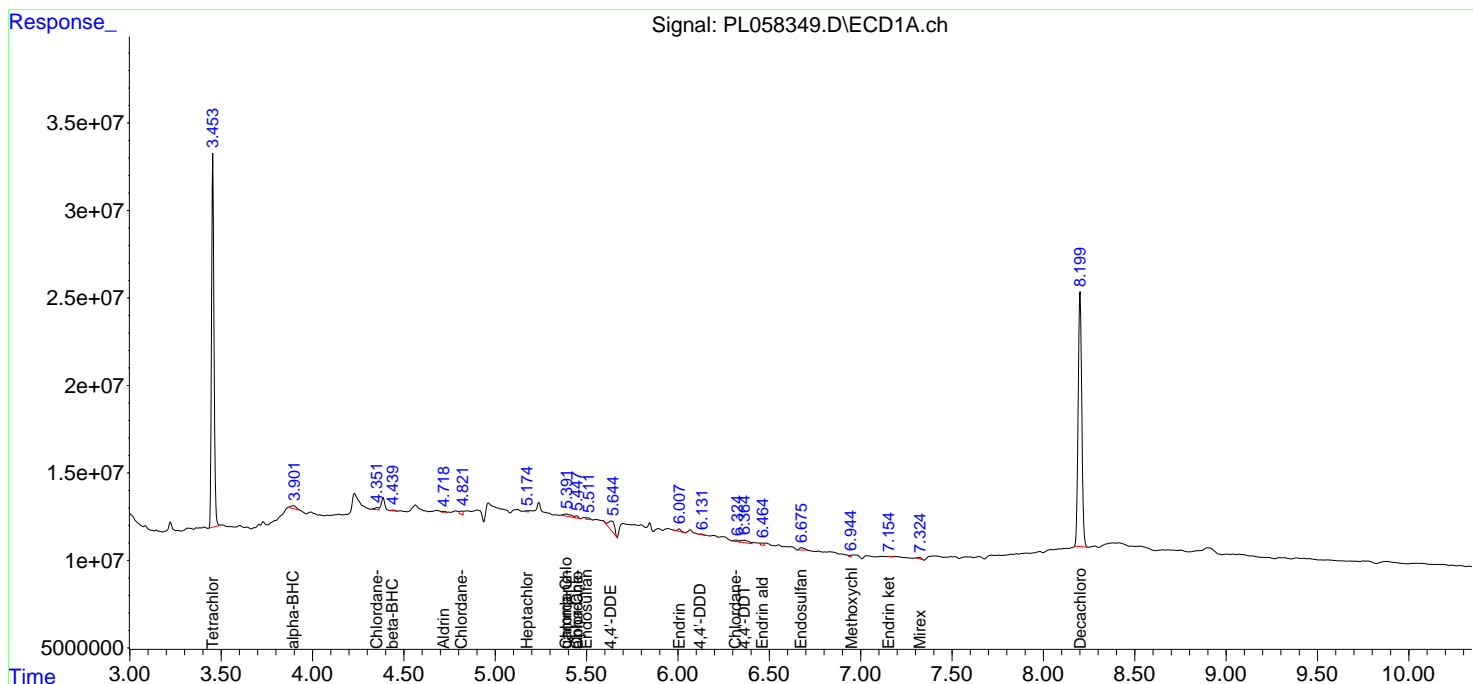
(f)=RT Delta > 1/2 Window (#)=Amounts differ by > 25% (m)=manual int.

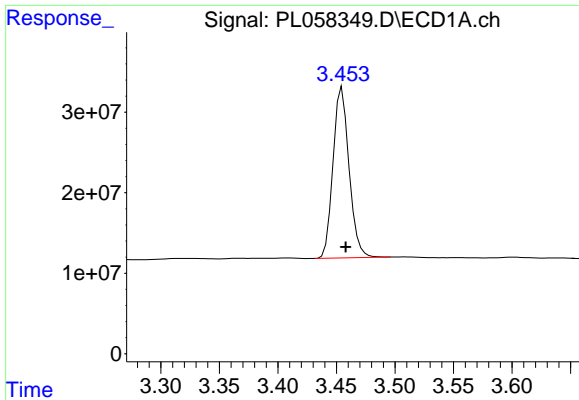
Data Path : Z:\pestpcbsrv\HPCHEM1\ECD_L\Data\PL042320\
 Data File : PL058349.D
 Signal(s) : Signal #1: ECD1A.ch Signal #2: ECD2B.ch
 Acq On : 23 Apr 2020 19:22
 Operator : AJ\MA
 Sample : I.BLK
 Misc :
 ALS Vial : 2 Sample Multiplier: 1

Instrument :
 ECD_L
 ClientSampled :
 I.BLK

Integration File signal 1: autoint1.e
 Integration File signal 2: autoint2.e
 Quant Time: Apr 24 00:56:58 2020
 Quant Method : Z:\pestpcbsrv\HPCHEM1\ECD_L\methods\PL040320.M
 Quant Title : GC Extractables
 QLast Update : Sat Apr 04 06:41:11 2020
 Response via : Initial Calibration
 Integrator: ChemStation

Volume Inj. : 1 µl
 Signal #1 Phase : ZB-MR2 Signal #2 Phase: ZB-MR1
 Signal #1 Info : 30M x 0.32mm x0.2 Signal #2 Info : 30M x 0.32mm x0.5µm

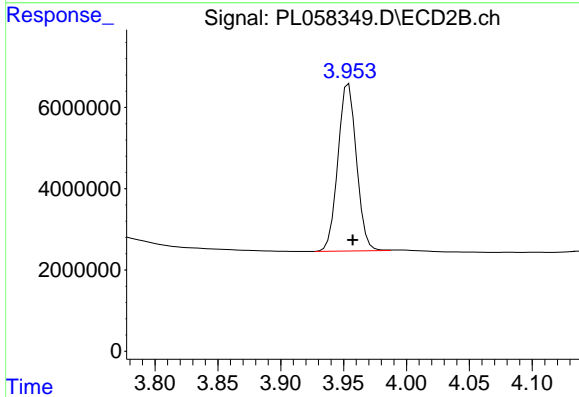




#1 Tetrachloro-m-xylene

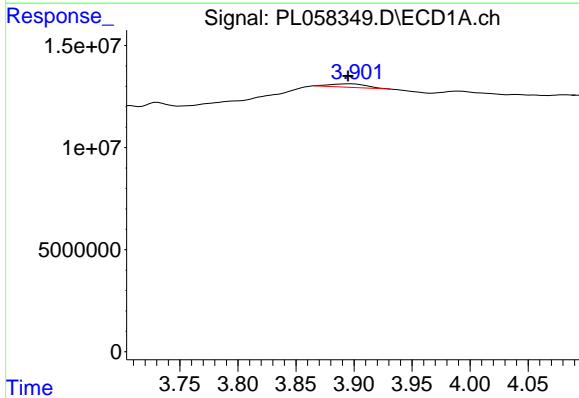
R.T.: 3.455 min
 Delta R.T.: -0.003 min
 Response: 201911622
 Conc: 20.03 ng/ml

Instrument :
 ECD_L
 ClientSampled :
 I.BLK



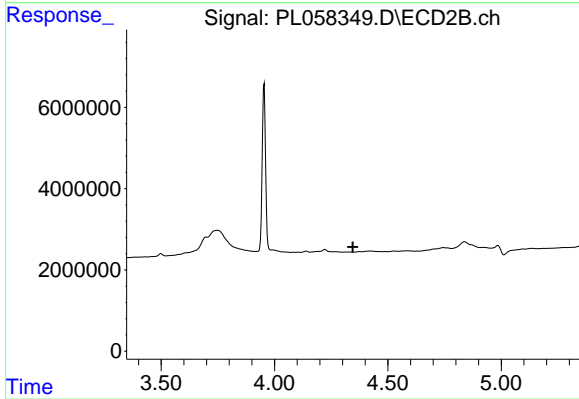
#1 Tetrachloro-m-xylene

R.T.: 3.954 min
 Delta R.T.: -0.003 min
 Response: 42269193
 Conc: 19.48 ng/ml



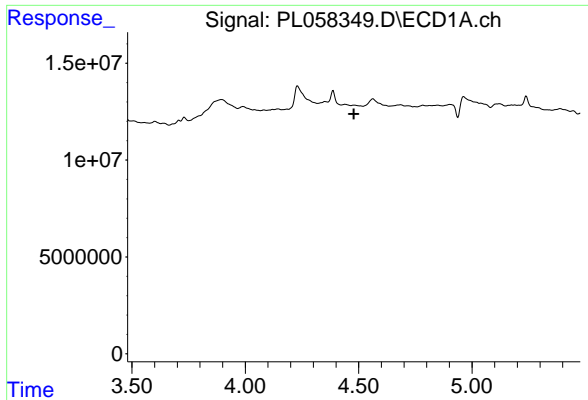
#2 alpha-BHC

R.T.: 3.896 min
 Delta R.T.: 0.001 min
 Response: 3515171
 Conc: 0.20 ng/ml



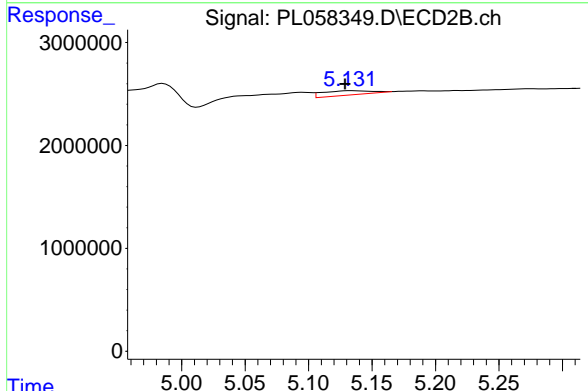
#2 alpha-BHC

R.T.: 0.000 min
 Exp R.T. : 4.345 min
 Response: 0
 Conc: N.D.

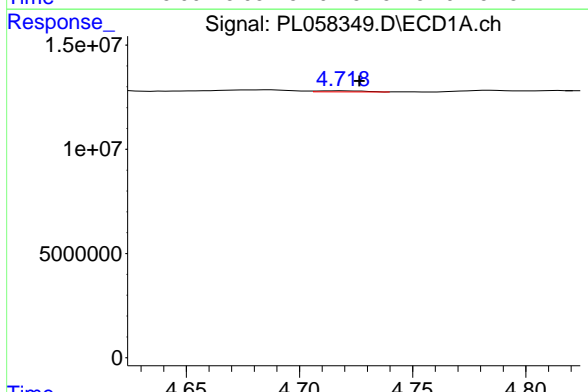


#4 Heptachlor
 R.T.: 4.480 min
 Delta R.T.: 0.001 min
 Response: -193288
 Conc: N.D.

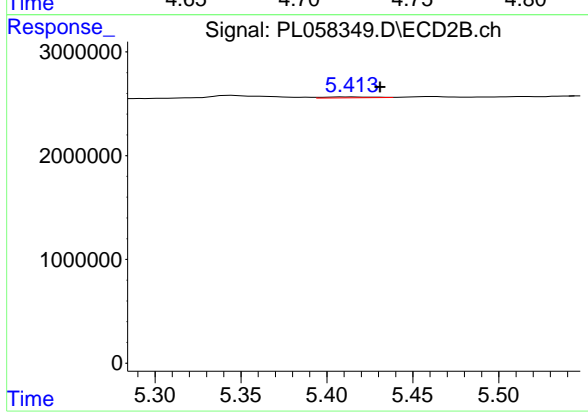
Instrument :
 ECD_L
 ClientSampled :
 I.BLK



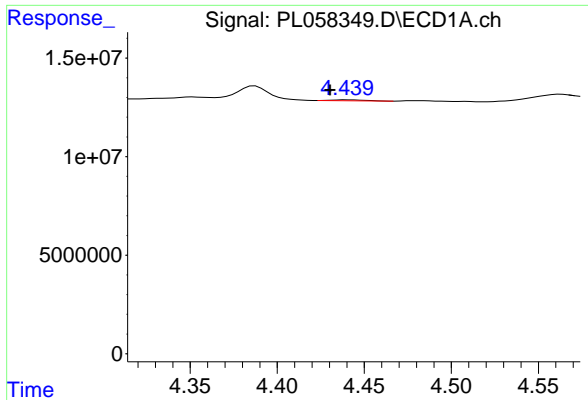
#4 Heptachlor
 R.T.: 5.133 min
 Delta R.T.: 0.005 min
 Response: 1077048
 Conc: 0.32 ng/ml



#5 Aldrin
 R.T.: 4.719 min
 Delta R.T.: -0.007 min
 Response: 737901
 Conc: 0.05 ng/ml

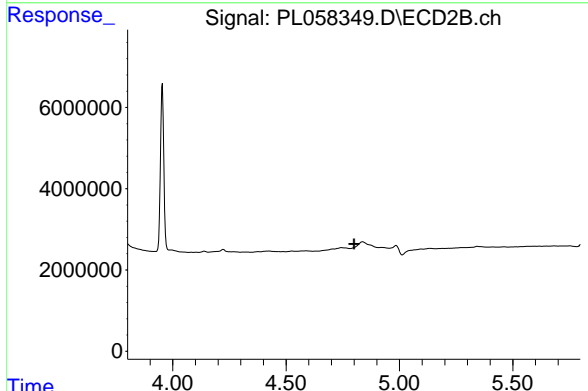


#5 Aldrin
 R.T.: 5.413 min
 Delta R.T.: -0.018 min
 Response: 155441
 Conc: 0.05 ng/ml

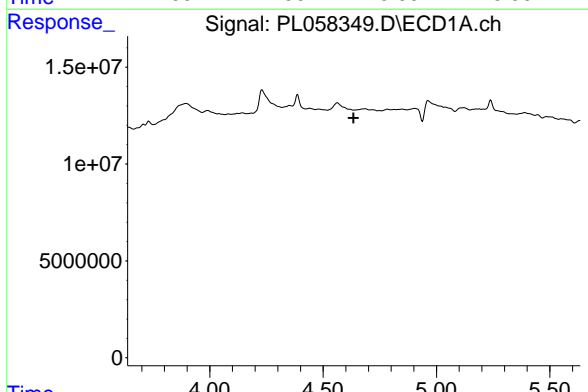


#6 beta-BHC
 R.T.: 4.440 min
 Delta R.T.: 0.010 min
 Response: 678299
 Conc: 0.11 ng/ml

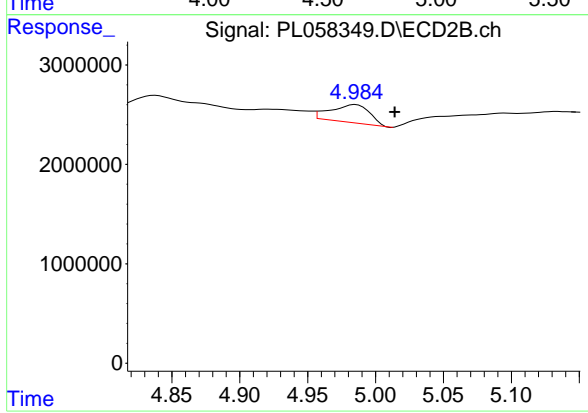
Instrument :
 ECD_L
 ClientSampleId :
 I.BLK



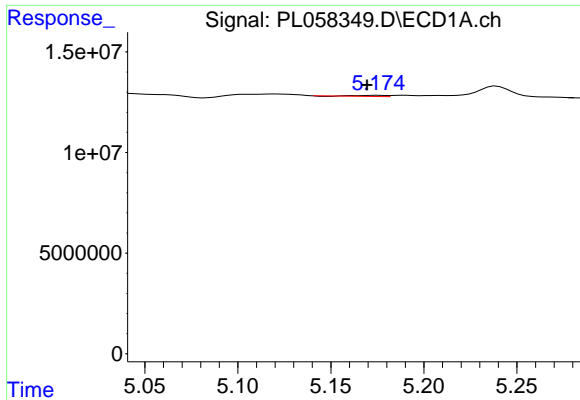
#6 beta-BHC
 R.T.: 0.000 min
 Exp R.T. : 4.800 min
 Response: 0
 Conc: N.D.



#7 delta-BHC
 R.T.: 0.000 min
 Exp R.T. : 4.634 min
 Response: 0
 Conc: N.D.

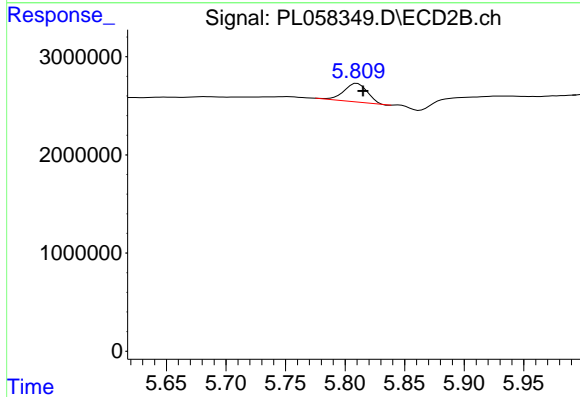


#7 delta-BHC
 R.T.: 4.985 min
 Delta R.T.: -0.029 min
 Response: 3615913
 Conc: 3.41 ng/ml

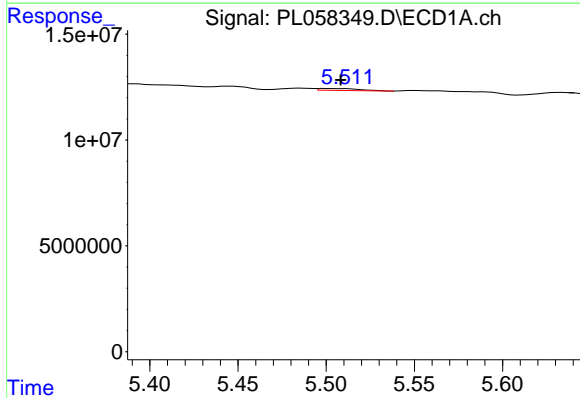


#8 Heptachlor epoxide
 R.T.: 5.175 min
 Delta R.T.: 0.005 min
 Response: 590220
 Conc: 0.04 ng/ml

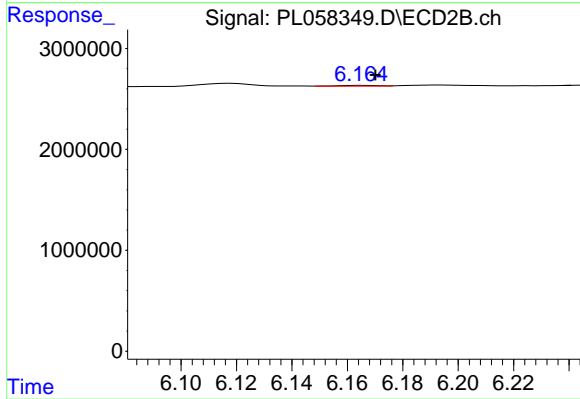
Instrument :
 ECD_L
 ClientSampleId :
 I.BLK



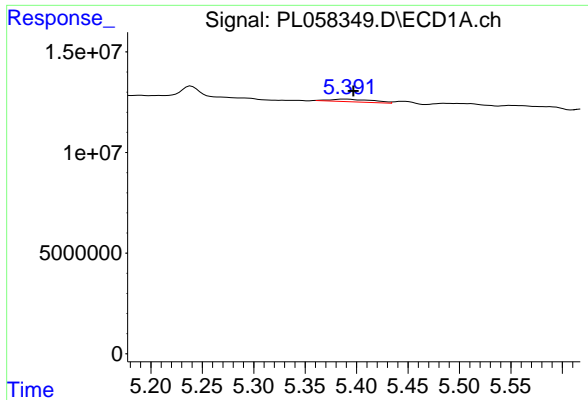
#8 Heptachlor epoxide
 R.T.: 5.810 min
 Delta R.T.: -0.005 min
 Response: 2637840
 Conc: 0.98 ng/ml



#9 Endosulfan I
 R.T.: 5.499 min
 Delta R.T.: -0.009 min
 Response: 1466601
 Conc: 0.12 ng/ml



#9 Endosulfan I
 R.T.: 6.165 min
 Delta R.T.: -0.005 min
 Response: 92739
 Conc: 0.03 ng/ml



#10 gamma-Chlordane

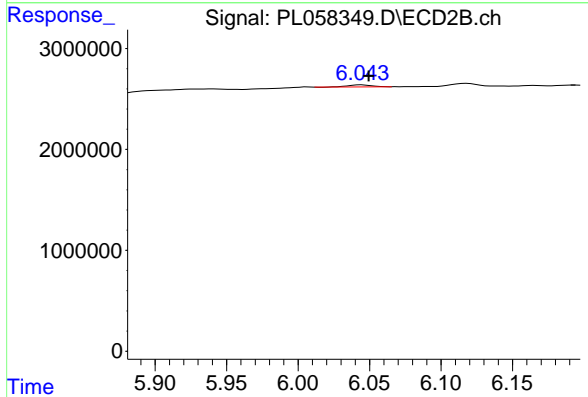
R.T.: 5.389 min

Delta R.T.: -0.008 min

Response: 3817820

Conc: 0.28 ng/ml

Instrument :
ECD_L
ClientSampleId :
I.BLK



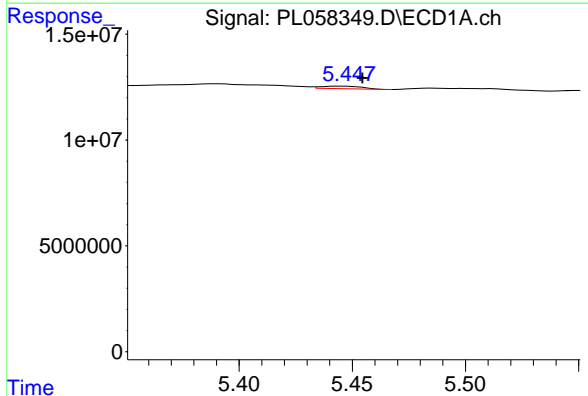
#10 gamma-Chlordane

R.T.: 6.045 min

Delta R.T.: -0.005 min

Response: 247427

Conc: 0.08 ng/ml



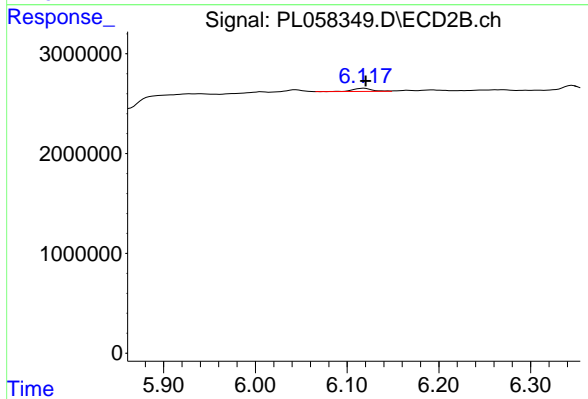
#11 alpha-Chlordane

R.T.: 5.446 min

Delta R.T.: -0.008 min

Response: 1541090

Conc: 0.12 ng/ml



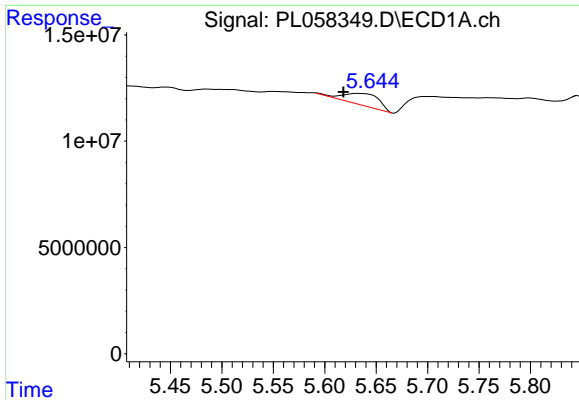
#11 alpha-Chlordane

R.T.: 6.118 min

Delta R.T.: -0.002 min

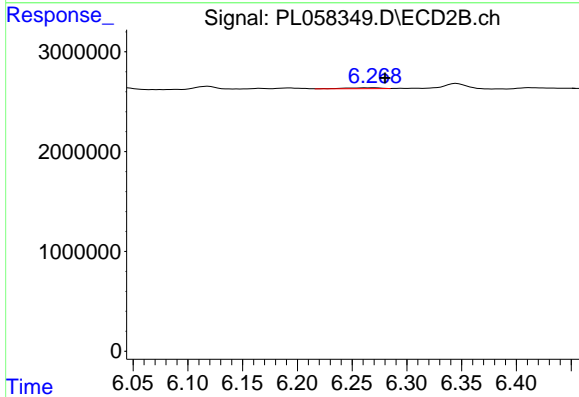
Response: 469209

Conc: 0.14 ng/ml

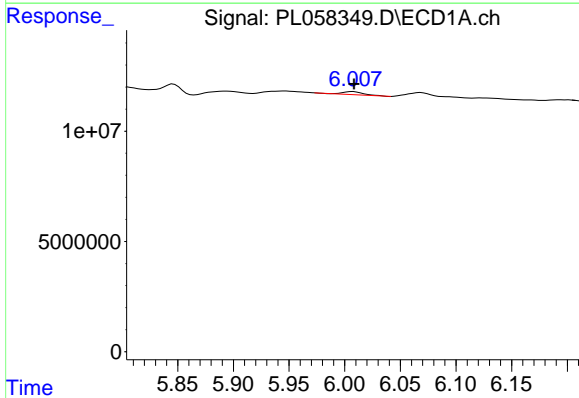


#12 4,4'-DDE
 R.T.: 5.633 min
 Delta R.T.: 0.015 min
 Response: 12386521
 Conc: 0.95 ng/ml

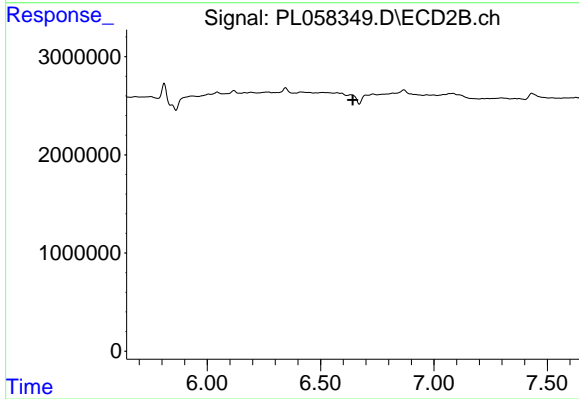
Instrument :
 ECD_L
 ClientSampleId :
 I.BLK



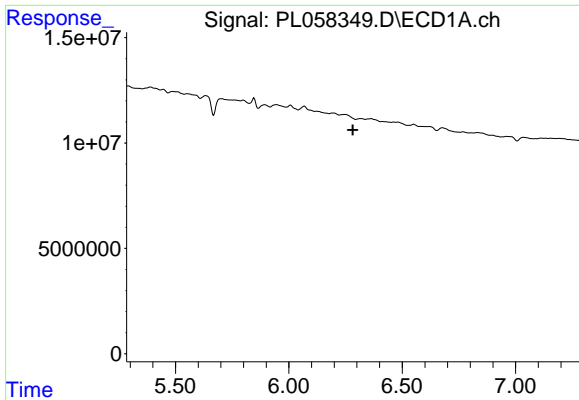
#12 4,4'-DDE
 R.T.: 6.271 min
 Delta R.T.: -0.010 min
 Response: 200903
 Conc: 0.07 ng/ml



#14 Endrin
 R.T.: 6.008 min
 Delta R.T.: 0.000 min
 Response: 1861945
 Conc: 0.16 ng/ml



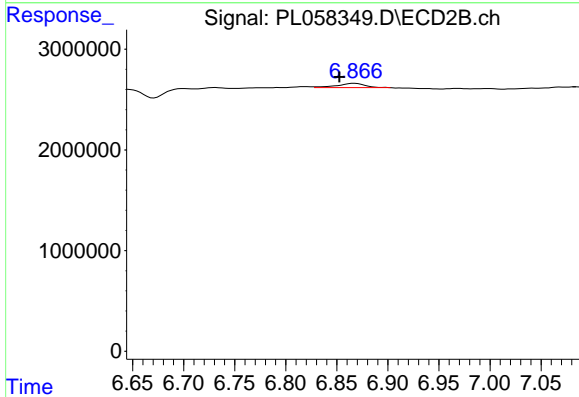
#14 Endrin
 R.T.: 0.000 min
 Exp R.T.: 6.642 min
 Response: 0
 Conc: N.D.



#15 Endosulfan II

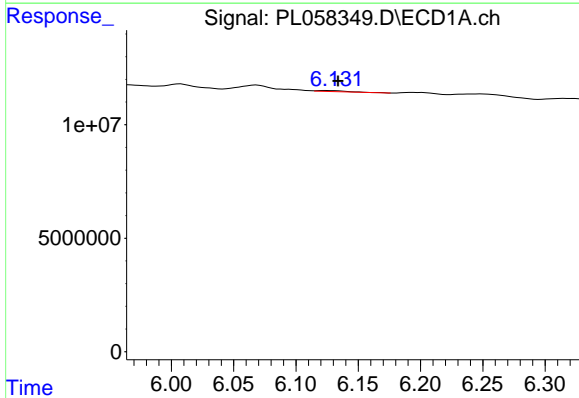
R.T.: 0.000 min
 Exp R.T.: 6.282 min
 Response: 0
 Conc: N.D.

Instrument :
 ECD_L
 ClientSampled :
 I.BLK



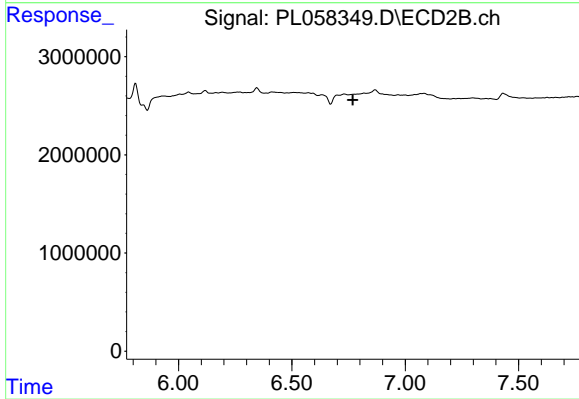
#15 Endosulfan II

R.T.: 6.867 min
 Delta R.T.: 0.015 min
 Response: 798149
 Conc: 0.31 ng/ml



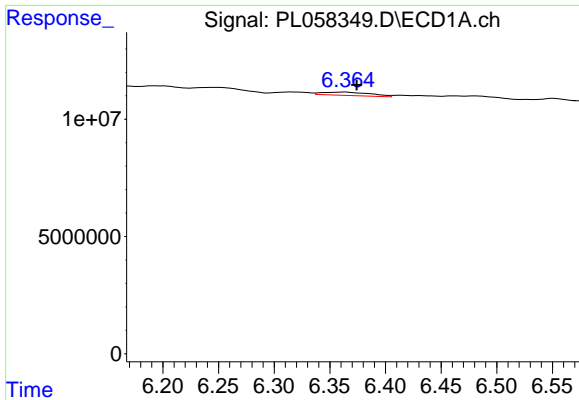
#16 4,4'-DDD

R.T.: 6.123 min
 Delta R.T.: -0.011 min
 Response: 525664
 Conc: 0.05 ng/ml



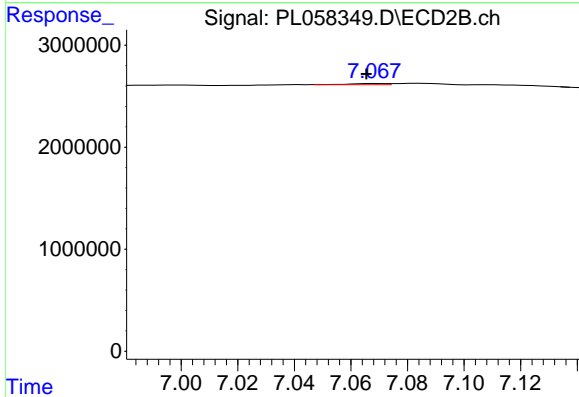
#16 4,4'-DDD

R.T.: 0.000 min
 Exp R.T.: 6.769 min
 Response: 0
 Conc: N.D.

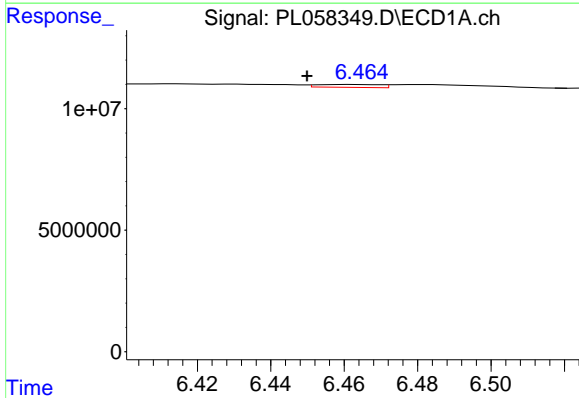


#17 4,4'-DDT
 R.T.: 6.365 min
 Delta R.T.: -0.010 min
 Response: 4249671
 Conc: 0.42 ng/ml

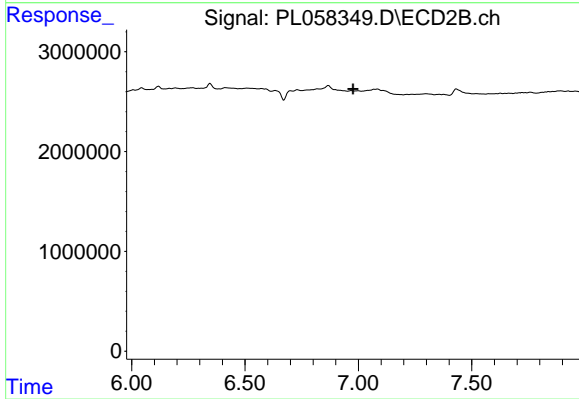
Instrument :
 ECD_L
 ClientSampled :
 I.BLK



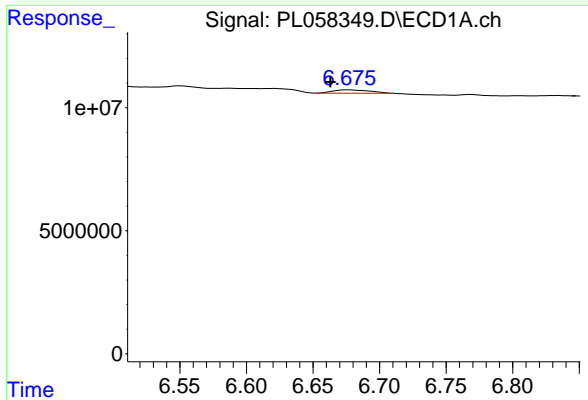
#17 4,4'-DDT
 R.T.: 7.069 min
 Delta R.T.: 0.003 min
 Response: 116991
 Conc: 0.05 ng/ml



#18 Endrin aldehyde
 R.T.: 6.462 min
 Delta R.T.: 0.012 min
 Response: 1457903
 Conc: 0.16 ng/ml

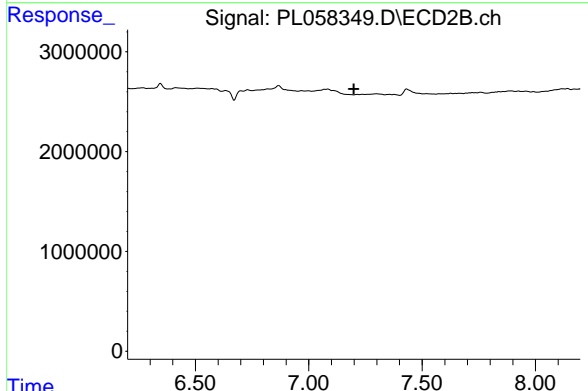


#18 Endrin aldehyde
 R.T.: 0.000 min
 Exp R.T. : 6.976 min
 Response: 0
 Conc: N.D.

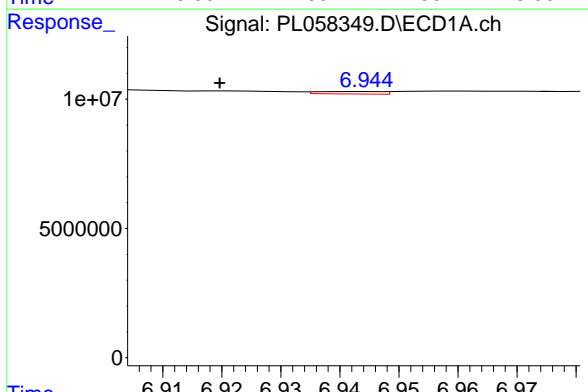


#19 Endosulfan Sulfate
 R.T.: 6.677 min
 Delta R.T.: 0.014 min
 Response: 1917899
 Conc: 0.19 ng/ml

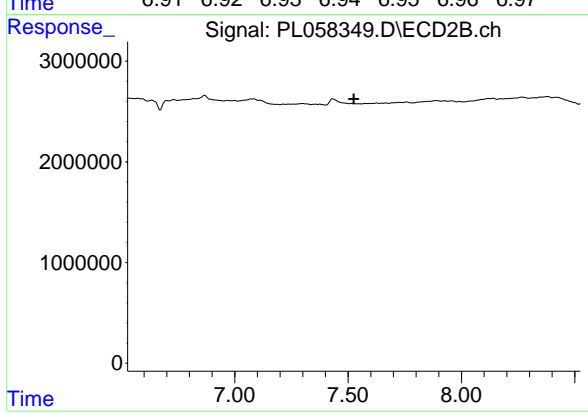
Instrument :
 ECD_L
 ClientSampleId :
 I.BLK



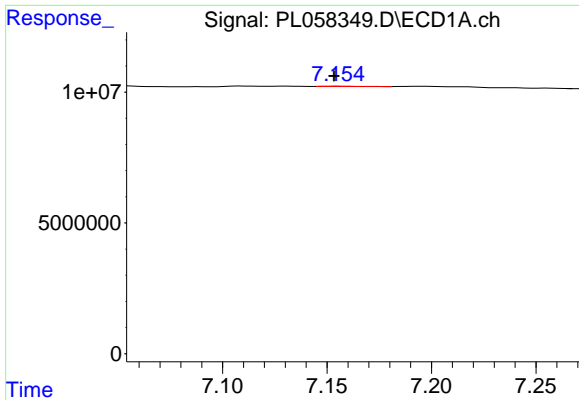
#19 Endosulfan Sulfate
 R.T.: 0.000 min
 Exp R.T. : 7.199 min
 Response: 0
 Conc: N.D.



#20 Methoxychlor
 R.T.: 6.944 min
 Delta R.T.: 0.024 min
 Response: 729577
 Conc: 0.13 ng/ml

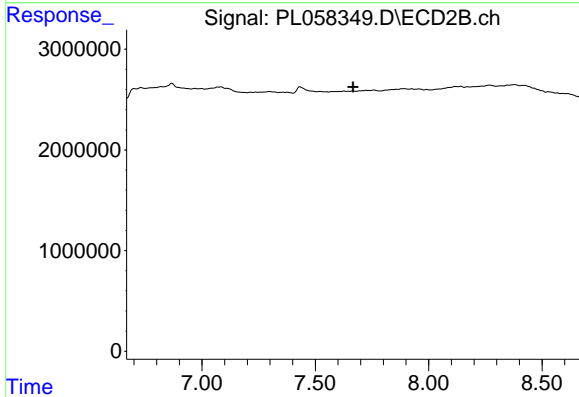


#20 Methoxychlor
 R.T.: 0.000 min
 Exp R.T. : 7.525 min
 Response: 0
 Conc: N.D.

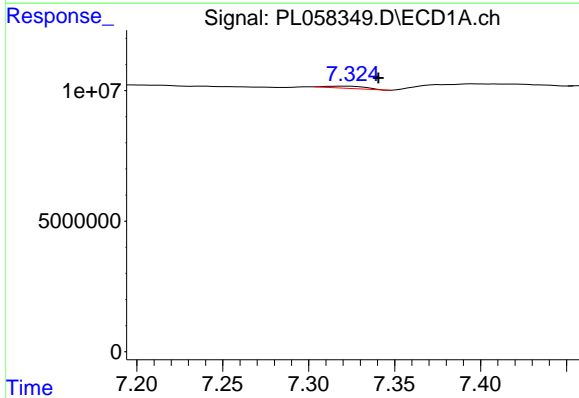


#21 Endrin ketone
 R.T.: 7.155 min
 Delta R.T.: 0.002 min
 Response: 112414
 Conc: 0.01 ng/ml

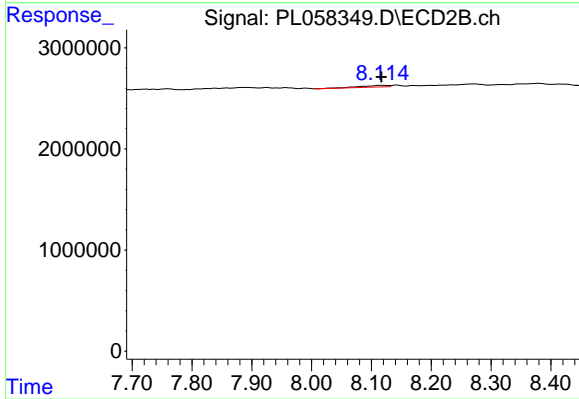
Instrument :
 ECD_L
 ClientSampleId :
 I.BLK



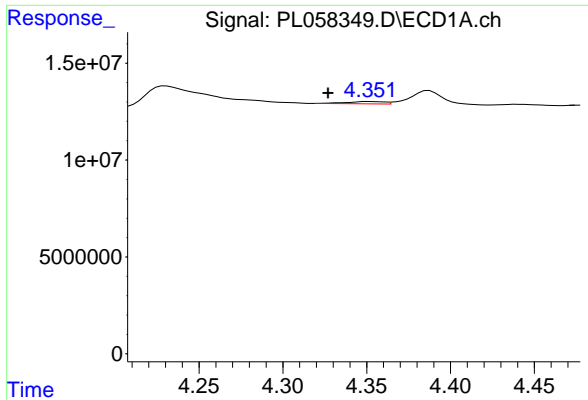
#21 Endrin ketone
 R.T.: 0.000 min
 Exp R.T. : 7.667 min
 Response: 0
 Conc: N.D.



#22 Mirex
 R.T.: 7.322 min
 Delta R.T.: -0.018 min
 Response: 1326671
 Conc: 0.16 ng/ml

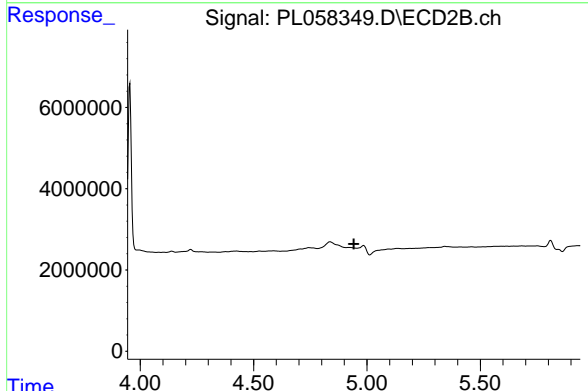


#22 Mirex
 R.T.: 8.116 min
 Delta R.T.: 0.000 min
 Response: 491797
 Conc: 0.27 ng/ml

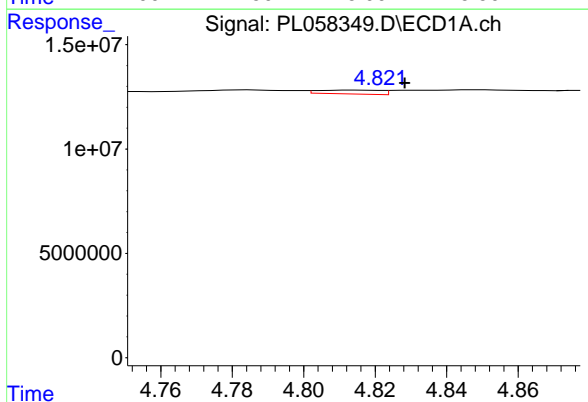


#23 Chlordane-1
 R.T.: 4.352 min
 Delta R.T.: 0.025 min
 Response: 1918094
 Conc: 5.19 ng/ml

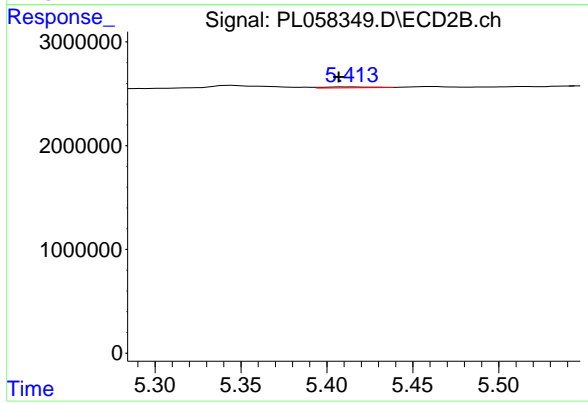
Instrument :
 ECD_L
 ClientSampleId :
 I.BLK



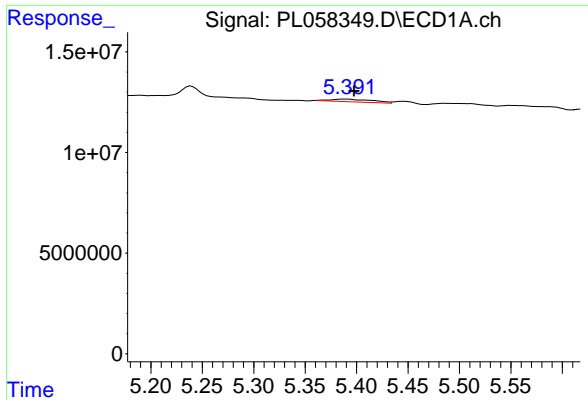
#23 Chlordane-1
 R.T.: 0.000 min
 Exp R.T. : 4.942 min
 Response: 0
 Conc: N.D.



#24 Chlordane-2
 R.T.: 4.814 min
 Delta R.T.: -0.014 min
 Response: 2239378
 Conc: 5.55 ng/ml



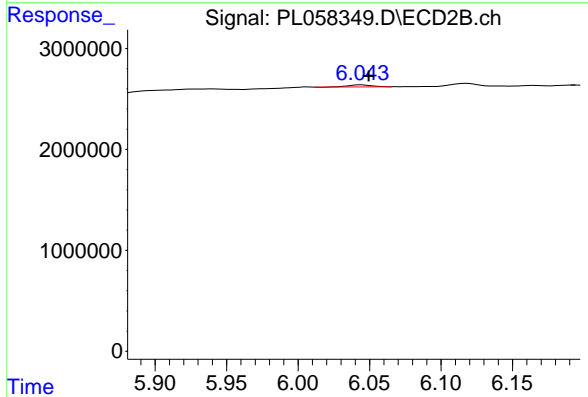
#24 Chlordane-2
 R.T.: 5.413 min
 Delta R.T.: 0.006 min
 Response: 155441
 Conc: 1.49 ng/ml



#25 Chlordane-3

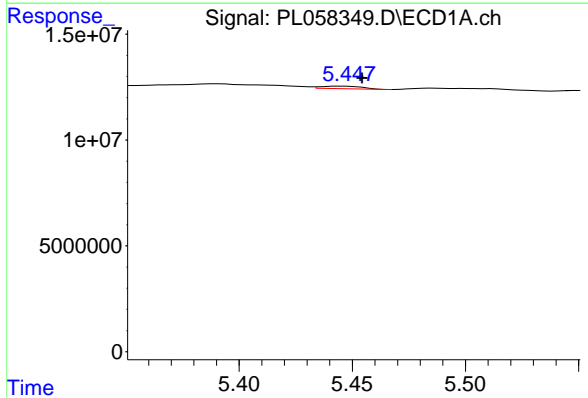
R.T.: 5.389 min
 Delta R.T.: -0.008 min
 Response: 3817820
 Conc: 3.12 ng/ml

Instrument :
 ECD_L
 ClientSampleId :
 I.BLK



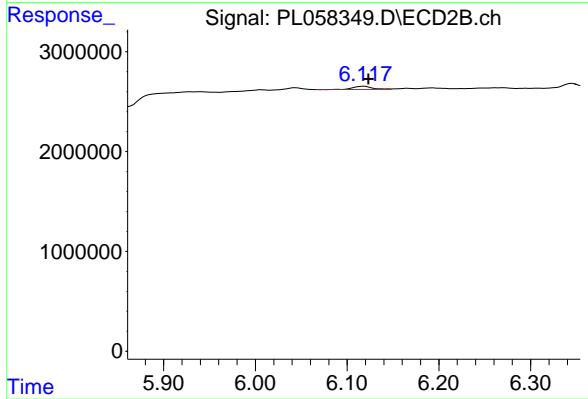
#25 Chlordane-3

R.T.: 6.045 min
 Delta R.T.: -0.005 min
 Response: 247427
 Conc: 0.57 ng/ml



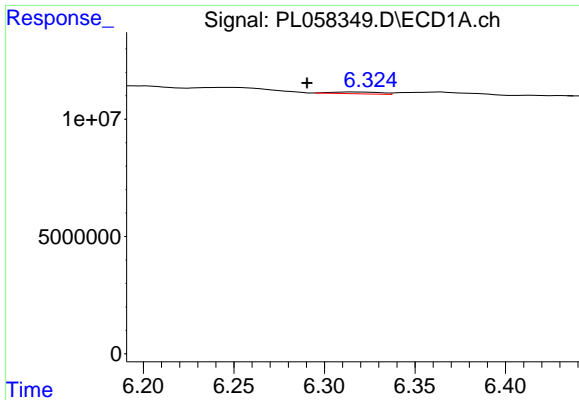
#26 Chlordane-4

R.T.: 5.446 min
 Delta R.T.: -0.008 min
 Response: 1541090
 Conc: 1.48 ng/ml



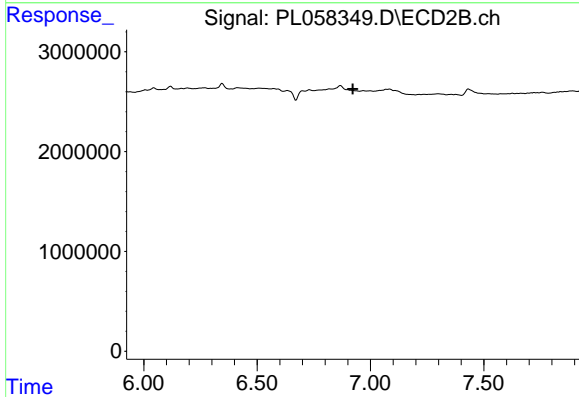
#26 Chlordane-4

R.T.: 6.118 min
 Delta R.T.: -0.005 min
 Response: 469209
 Conc: 0.89 ng/ml

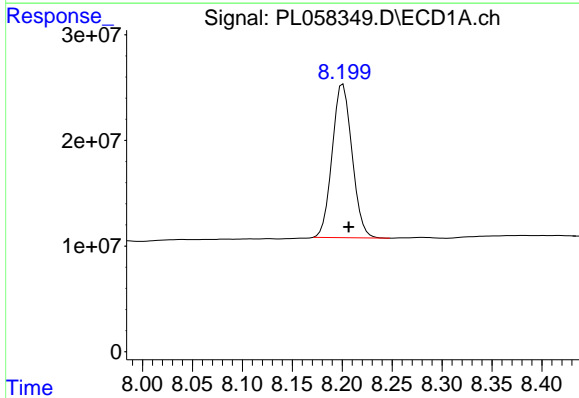


#27 Chlordane-5
 R.T.: 6.316 min
 Delta R.T.: 0.025 min
 Response: 1436744
 Conc: 3.80 ng/ml

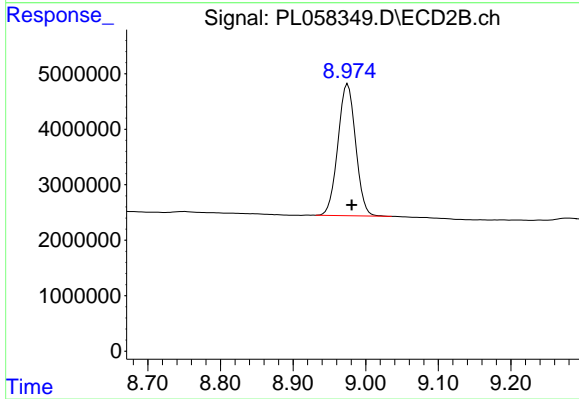
Instrument :
 ECD_L
 ClientSampled :
 I.BLK



#27 Chlordane-5
 R.T.: 0.000 min
 Exp R.T. : 6.922 min
 Response: 0
 Conc: N.D.



#28 Decachlorobiphenyl
 R.T.: 8.201 min
 Delta R.T.: -0.006 min
 Response: 201146507
 Conc: 19.51 ng/ml



#28 Decachlorobiphenyl
 R.T.: 8.975 min
 Delta R.T.: -0.006 min
 Response: 40202588
 Conc: 18.00 ng/ml