

Data Path : Z:\pestpcbsrv\HPCHEM1\ECD_L\Data\PL042320\
 Data File : PL058332.D
 Signal(s) : Signal #1: ECD1A.ch Signal #2: ECD2B.ch
 Acq On : 23 Apr 2020 15:21
 Operator : AJ\MA
 Sample : L2397-05
 Misc :
 ALS Vial : 8 Sample Multiplier: 1

Instrument :
 ECD_L
 ClientSampleId :
 TP-1-COMP

Integration File signal 1: autoint1.e
 Integration File signal 2: autoint2.e
 Quant Time: Apr 24 00:51:33 2020
 Quant Method : Z:\pestpcbsrv\HPCHEM1\ECD_L\methods\PL040320.M
 Quant Title : GC Extractables
 QLast Update : Sat Apr 04 06:41:11 2020
 Response via : Initial Calibration
 Integrator: ChemStation

Volume Inj. : 1 µl
 Signal #1 Phase : ZB-MR2 Signal #2 Phase: ZB-MR1
 Signal #1 Info : 30M x 0.32mm x0.2 Signal #2 Info : 30M x 0.32mm x0.5µm

Compound	RT#1	RT#2	Resp#1	Resp#2	ng/ml	ng/ml

System Monitoring Compounds						
1) SA Tetrachlo...	3.455	3.954	229.9E6	38796021	22.804	17.877
28) SA Decachlor...	8.201	8.974	157.4E6	31602926	15.274	14.148
Target Compounds						
16) A 4,4'-DDD	6.127	6.761	16869384	3109344	1.688	1.362

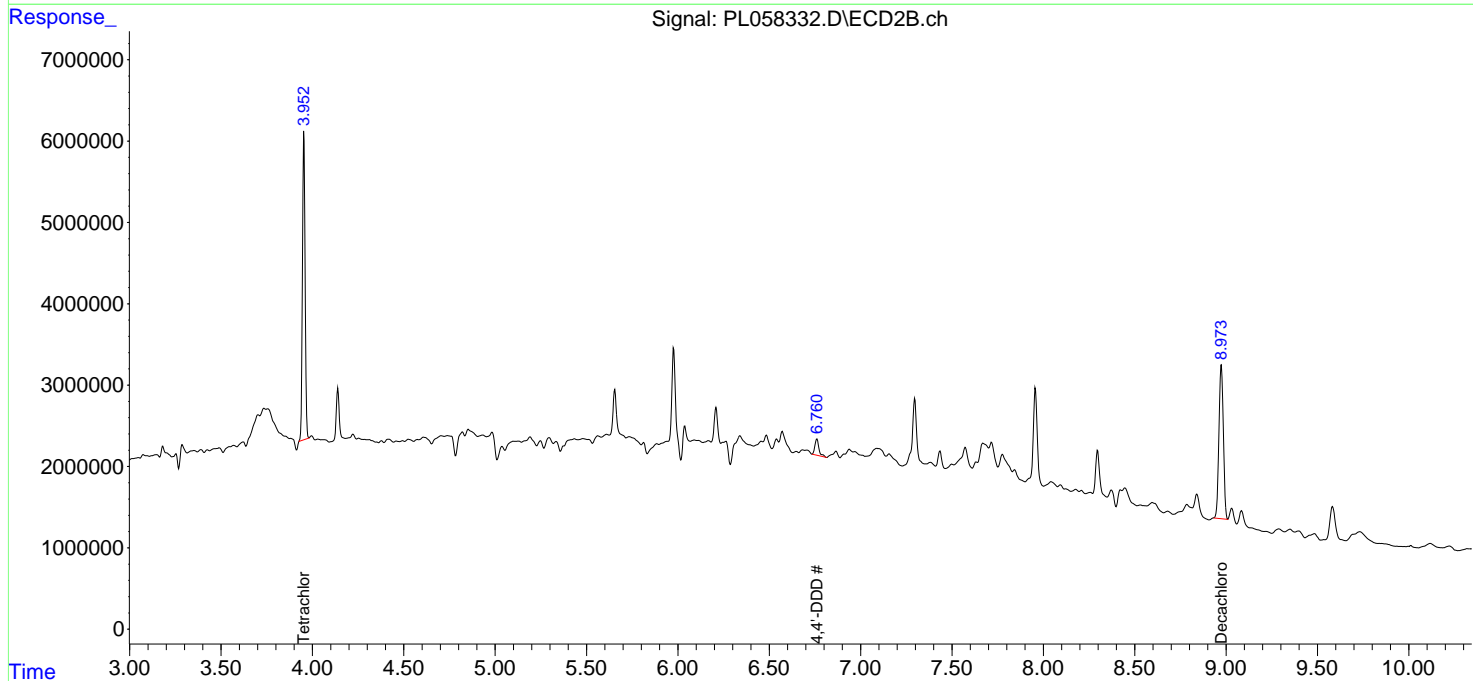
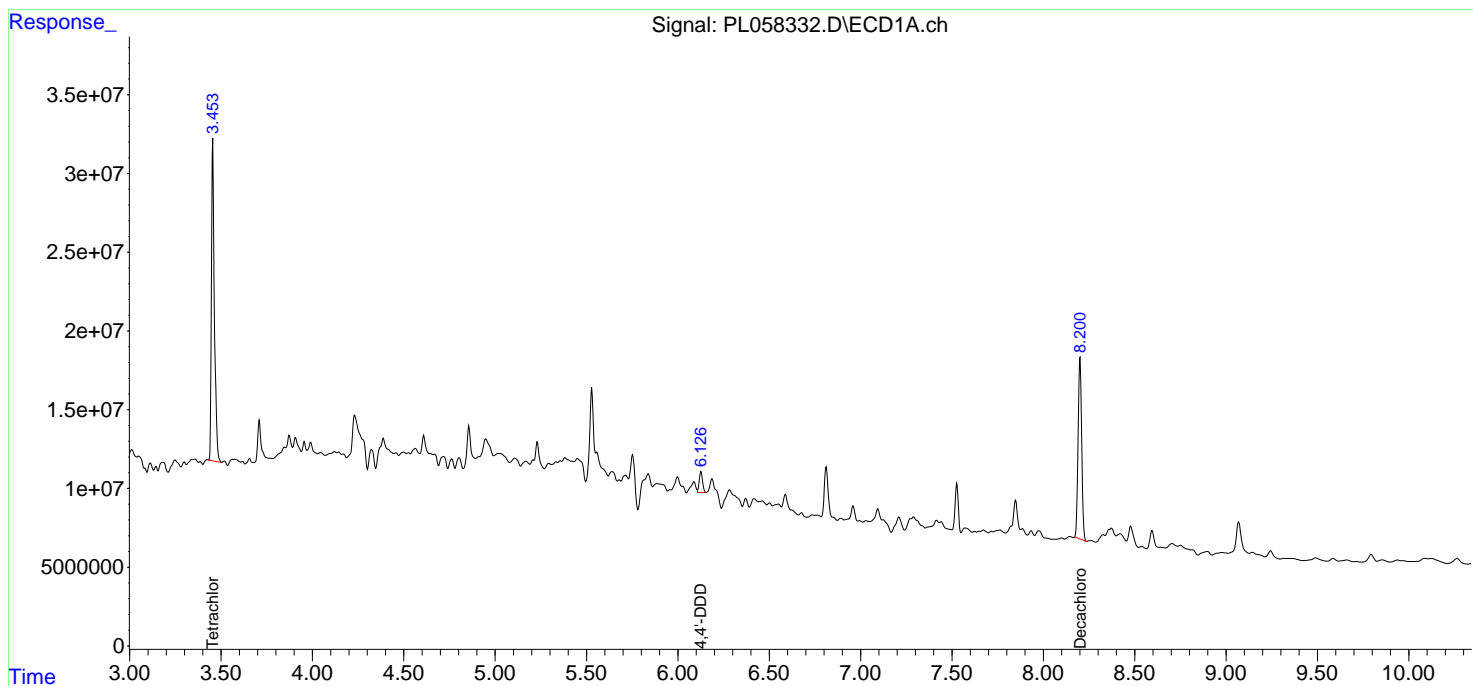
(f)=RT Delta > 1/2 Window (#)=Amounts differ by > 25% (m)=manual int.

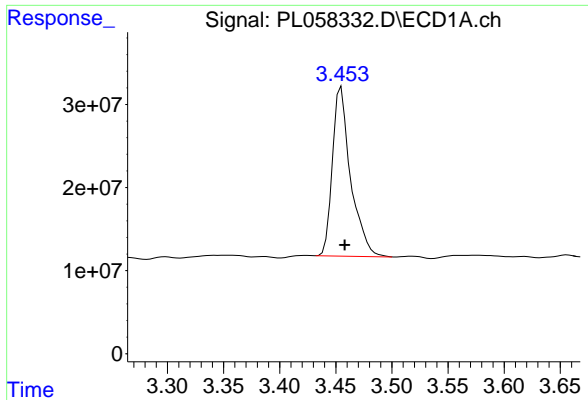
Data Path : Z:\pestpcbsrv\HPCHEM1\ECD_L\Data\PL042320\
 Data File : PL058332.D
 Signal(s) : Signal #1: ECD1A.ch Signal #2: ECD2B.ch
 Acq On : 23 Apr 2020 15:21
 Operator : AJ\MA
 Sample : L2397-05
 Misc :
 ALS Vial : 8 Sample Multiplier: 1

Instrument :
 ECD_L
 ClientSampleId :
 TP-1-COMP

Integration File signal 1: autoint1.e
 Integration File signal 2: autoint2.e
 Quant Time: Apr 24 00:51:33 2020
 Quant Method : Z:\pestpcbsrv\HPCHEM1\ECD_L\methods\PL040320.M
 Quant Title : GC Extractables
 QLast Update : Sat Apr 04 06:41:11 2020
 Response via : Initial Calibration
 Integrator: ChemStation

Volume Inj. : 1 µl
 Signal #1 Phase : ZB-MR2 Signal #2 Phase: ZB-MR1
 Signal #1 Info : 30M x 0.32mm x0.2 Signal #2 Info : 30M x 0.32mm x0.5µm

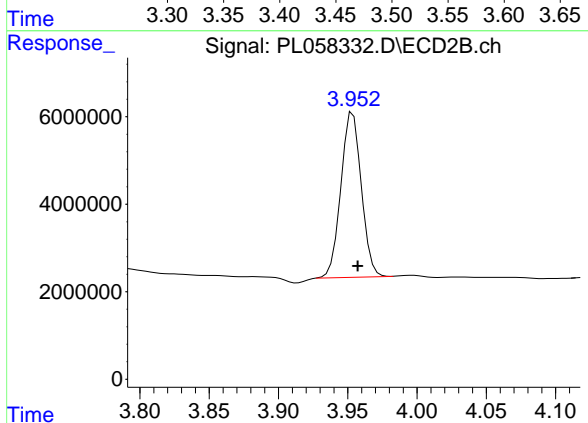




#1 Tetrachloro-m-xylene

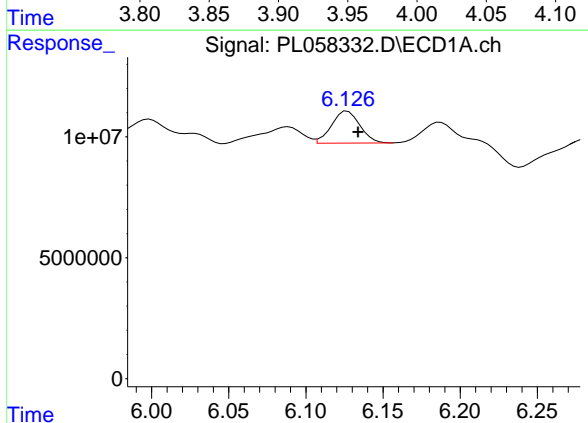
R.T.: 3.455 min
 Delta R.T.: -0.003 min
 Response: 229886403
 Conc: 22.80 ng/ml

Instrument :
 ECD_L
 ClientSampleId :
 TP-1-COMP



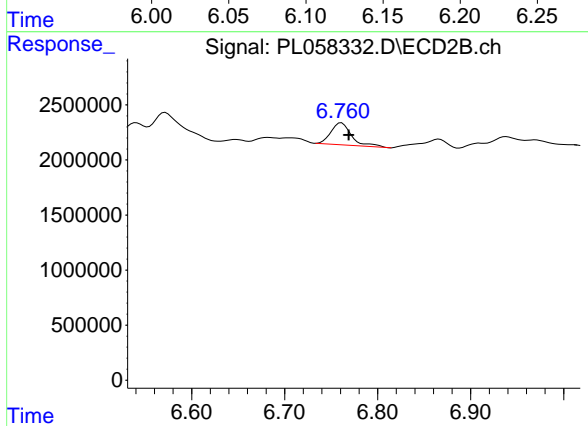
#1 Tetrachloro-m-xylene

R.T.: 3.954 min
 Delta R.T.: -0.004 min
 Response: 38796021
 Conc: 17.88 ng/ml



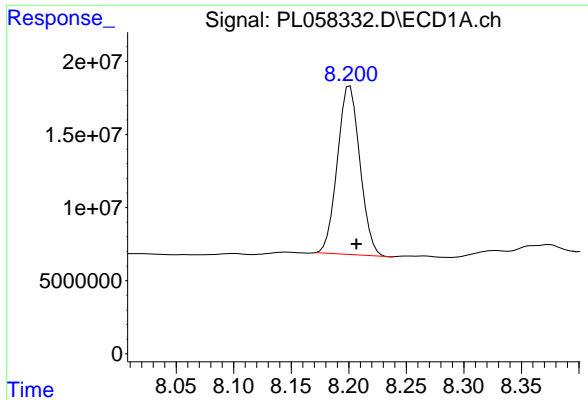
#16 4,4'-DDD

R.T.: 6.127 min
 Delta R.T.: -0.007 min
 Response: 16869384
 Conc: 1.69 ng/ml



#16 4,4'-DDD

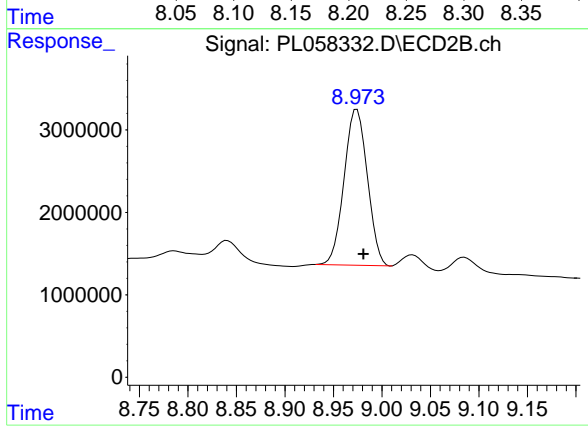
R.T.: 6.761 min
 Delta R.T.: -0.008 min
 Response: 3109344
 Conc: 1.36 ng/ml



#28 Decachlorobiphenyl

R.T.: 8.201 min
Delta R.T.: -0.006 min
Response: 157449491
Conc: 15.27 ng/ml

Instrument :
ECD_L
ClientSampleId :
TP-1-COMP



#28 Decachlorobiphenyl

R.T.: 8.974 min
Delta R.T.: -0.007 min
Response: 31602926
Conc: 14.15 ng/ml