

Data Path : Z:\pestpcbsrv\HPCHEM1\ECD_L\Data\PL042320\
 Data File : PL058343.D
 Signal(s) : Signal #1: ECD1A.ch Signal #2: ECD2B.ch
 Acq On : 23 Apr 2020 17:57
 Operator : AJ\MA
 Sample : L2378-11
 Misc :
 ALS Vial : 19 Sample Multiplier: 1

Instrument :
 ECD_L
 ClientSampleId :
 TP-2-S

Integration File signal 1: autoint1.e
 Integration File signal 2: autoint2.e
 Quant Time: Apr 24 00:55:00 2020
 Quant Method : Z:\pestpcbsrv\HPCHEM1\ECD_L\methods\PL040320.M
 Quant Title : GC Extractables
 QLast Update : Sat Apr 04 06:41:11 2020
 Response via : Initial Calibration
 Integrator: ChemStation

Volume Inj. : 1 µl
 Signal #1 Phase : ZB-MR2 Signal #2 Phase: ZB-MR1
 Signal #1 Info : 30M x 0.32mm x0.2 Signal #2 Info : 30M x 0.32mm x0.5µm

Compound	RT#1	RT#2	Resp#1	Resp#2	ng/ml	ng/ml

System Monitoring Compounds						
1) SA Tetrachlo...	3.455	3.954	84270910	18301940	8.359	8.434
28) SA Decachlor...	8.201	8.975	112.1E6	23337388	10.873	10.448

Target Compounds

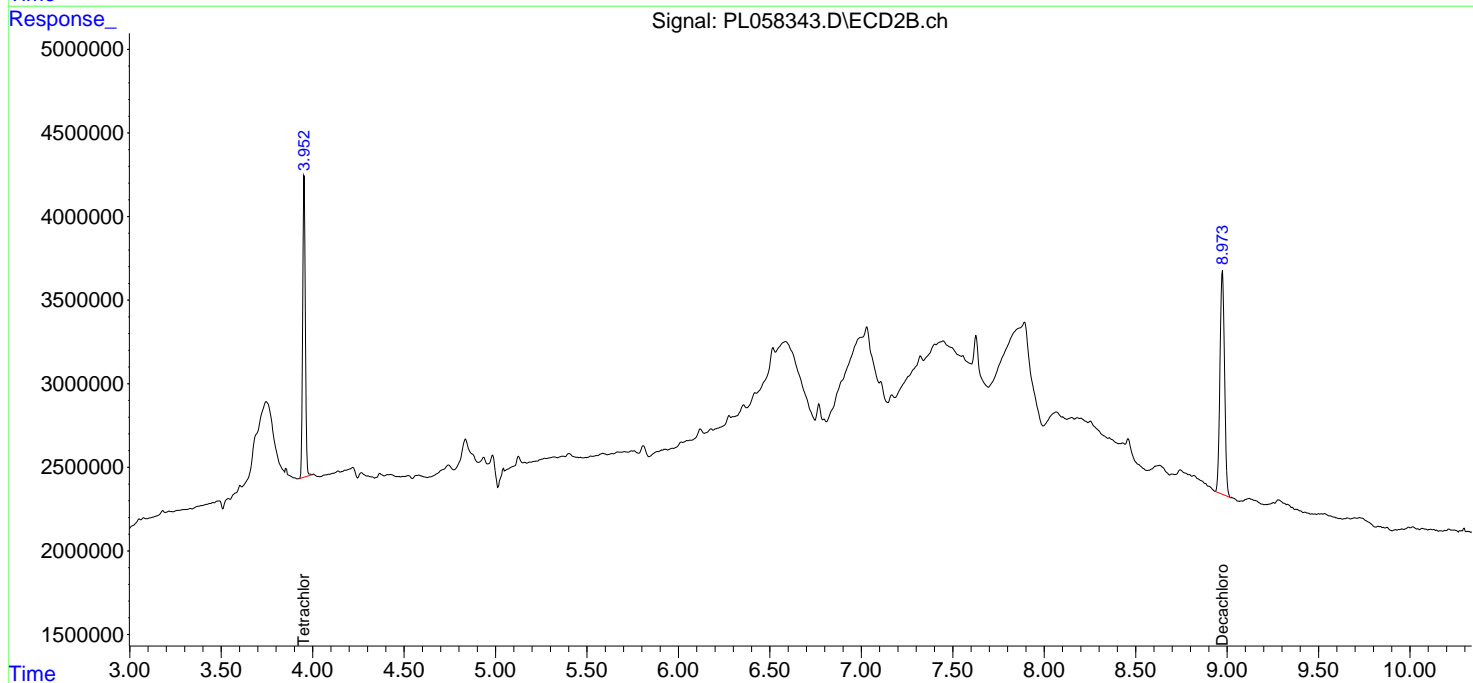
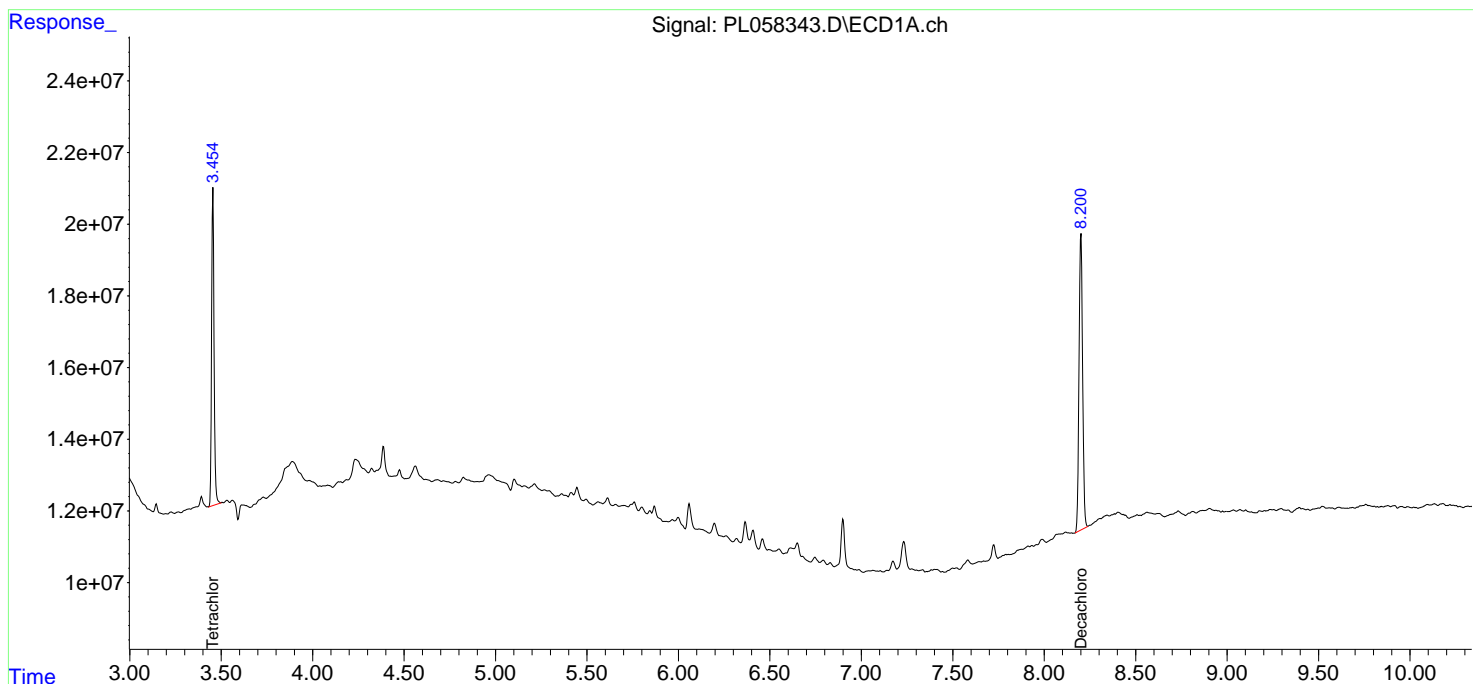
(f)=RT Delta > 1/2 Window (#)=Amounts differ by > 25% (m)=manual int.

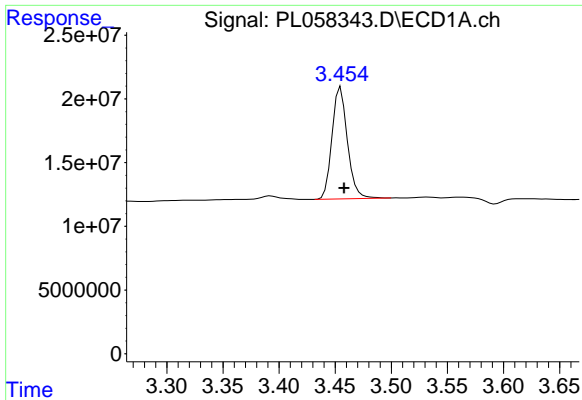
Data Path : Z:\pestpcbsrv\HPCHEM1\ECD_L\Data\PL042320\
 Data File : PL058343.D
 Signal(s) : Signal #1: ECD1A.ch Signal #2: ECD2B.ch
 Acq On : 23 Apr 2020 17:57
 Operator : AJ\MA
 Sample : L2378-11
 Misc :
 ALS Vial : 19 Sample Multiplier: 1

Instrument :
 ECD_L
 ClientSampled :
 TP-2-S

Integration File signal 1: autoint1.e
 Integration File signal 2: autoint2.e
 Quant Time: Apr 24 00:55:00 2020
 Quant Method : Z:\pestpcbsrv\HPCHEM1\ECD_L\methods\PL040320.M
 Quant Title : GC Extractables
 QLast Update : Sat Apr 04 06:41:11 2020
 Response via : Initial Calibration
 Integrator: ChemStation

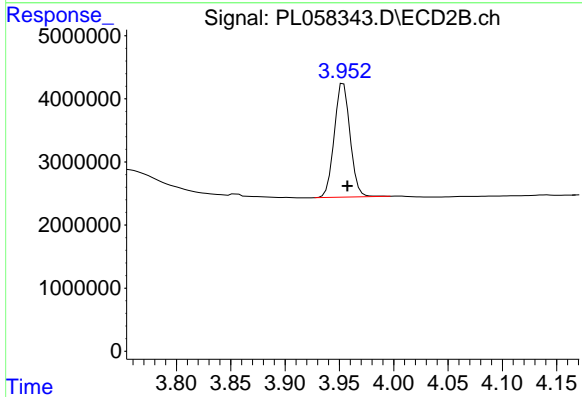
Volume Inj. : 1 µl
 Signal #1 Phase : ZB-MR2 Signal #2 Phase: ZB-MR1
 Signal #1 Info : 30M x 0.32mm x0.2 Signal #2 Info : 30M x 0.32mm x0.5µm



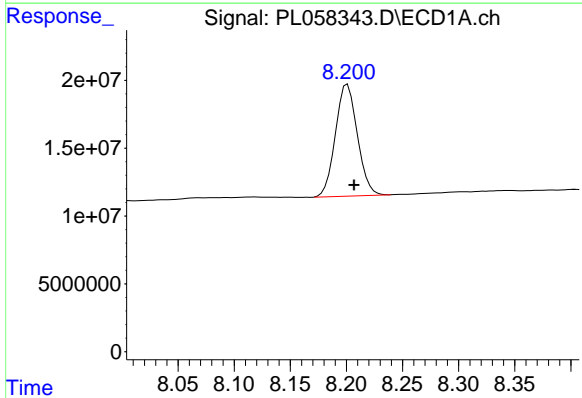


#1 Tetrachloro-m-xylene
R.T.: 3.455 min
Delta R.T.: -0.003 min
Response: 84270910
Conc: 8.36 ng/ml

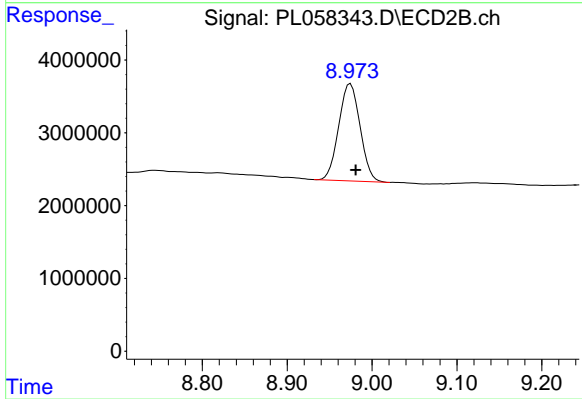
Instrument :
ECD_L
ClientSampled :
TP-2-S



#1 Tetrachloro-m-xylene
R.T.: 3.954 min
Delta R.T.: -0.004 min
Response: 18301940
Conc: 8.43 ng/ml



#28 Decachlorobiphenyl
R.T.: 8.201 min
Delta R.T.: -0.006 min
Response: 112086981
Conc: 10.87 ng/ml



#28 Decachlorobiphenyl
R.T.: 8.975 min
Delta R.T.: -0.006 min
Response: 23337388
Conc: 10.45 ng/ml