

Data Path : Z:\pestpcbsrv\HPCHEM1\ECD_L\Data\PL042320\
 Data File : PL058346.D
 Signal(s) : Signal #1: ECD1A.ch Signal #2: ECD2B.ch
 Acq On : 23 Apr 2020 18:39
 Operator : AJ\MA
 Sample : L2394-03
 Misc :
 ALS Vial : 22 Sample Multiplier: 1

Instrument :
 ECD_L
 ClientSampleId :
 B-1

Integration File signal 1: autoint1.e
 Integration File signal 2: autoint2.e
 Quant Time: Apr 24 00:56:01 2020
 Quant Method : Z:\pestpcbsrv\HPCHEM1\ECD_L\methods\PL040320.M
 Quant Title : GC Extractables
 QLast Update : Sat Apr 04 06:41:11 2020
 Response via : Initial Calibration
 Integrator: ChemStation

Volume Inj. : 1 µl
 Signal #1 Phase : ZB-MR2 Signal #2 Phase: ZB-MR1
 Signal #1 Info : 30M x 0.32mm x0.2 Signal #2 Info : 30M x 0.32mm x0.5µm

Compound	RT#1	RT#2	Resp#1	Resp#2	ng/ml	ng/ml

System Monitoring Compounds						
1) SA Tetrachlo...	3.455	3.954	102.1E6	21632541	10.132	9.968
28) SA Decachlor...	8.201	8.974	113.3E6	23034082	10.994	10.312
Target Compounds						
12) B 4,4'-DDE	5.614	6.275	31589781	6077534	2.411	2.053

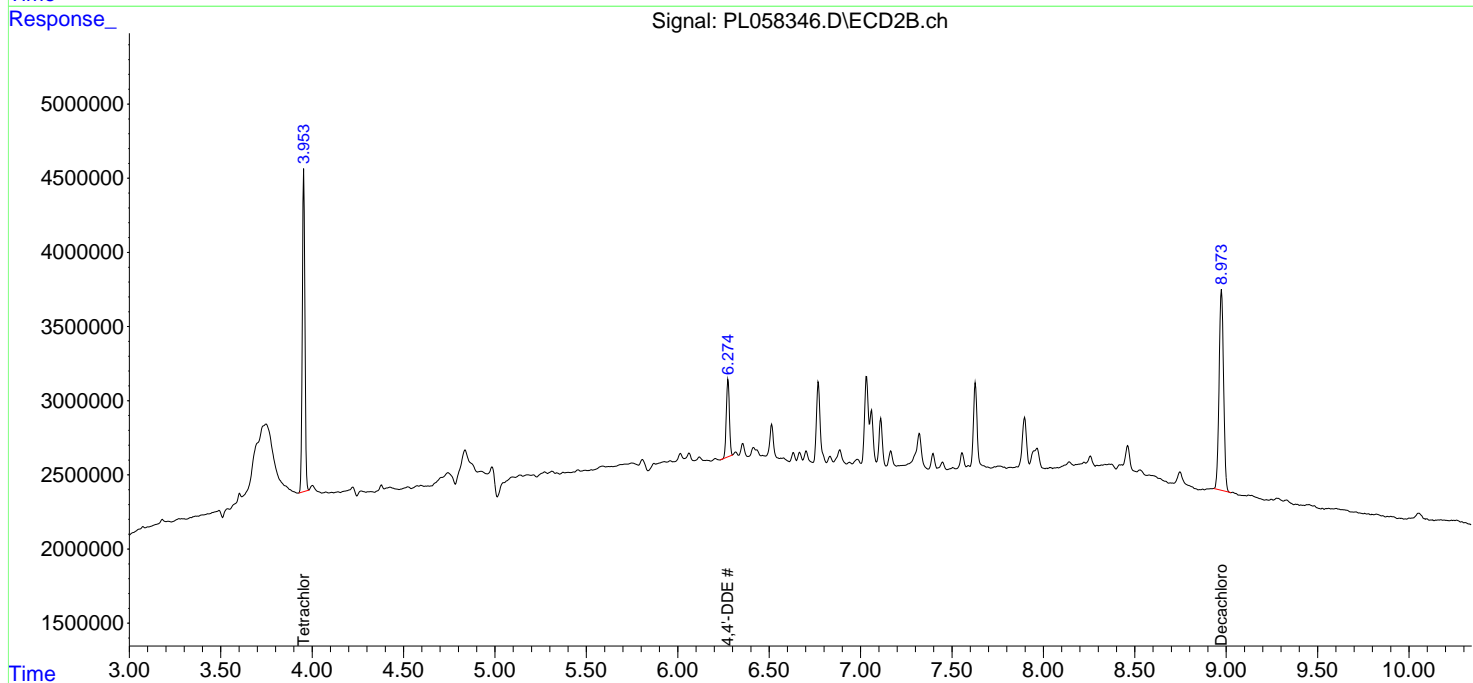
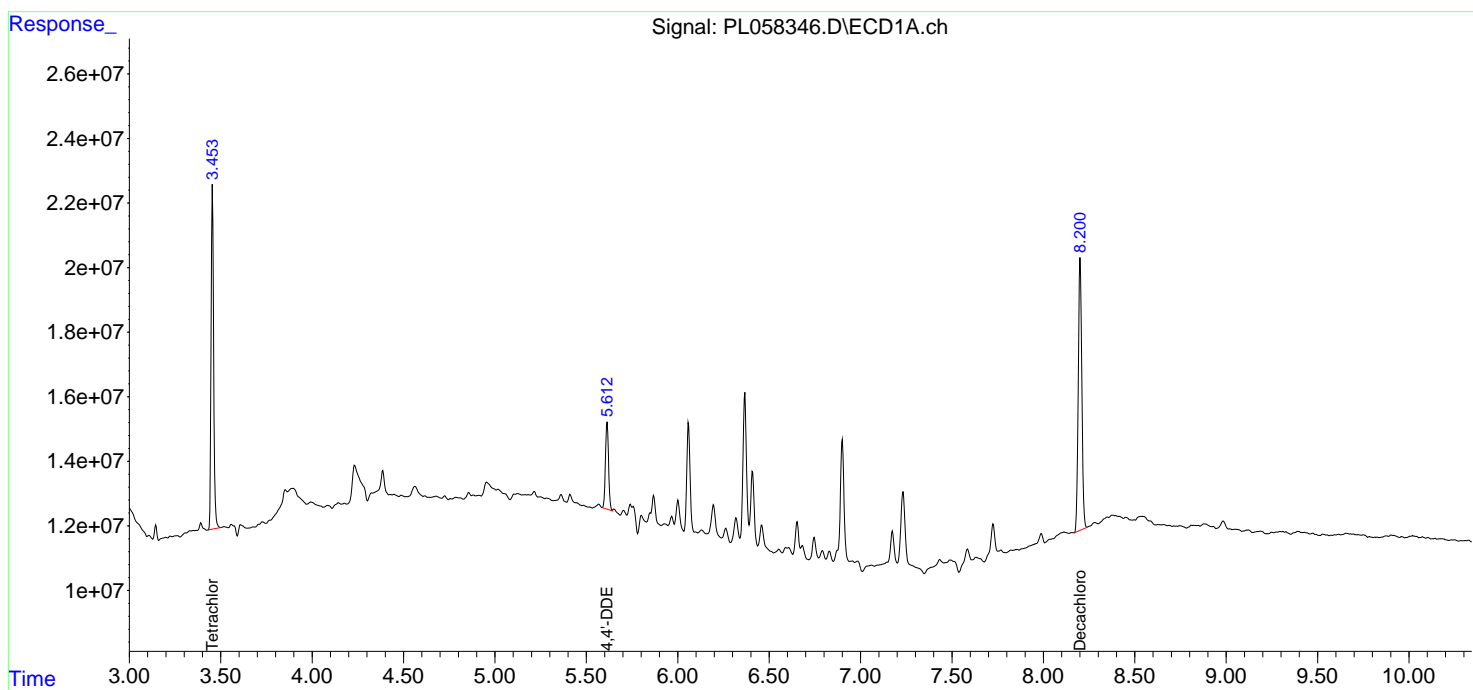
(f)=RT Delta > 1/2 Window (#)=Amounts differ by > 25% (m)=manual int.

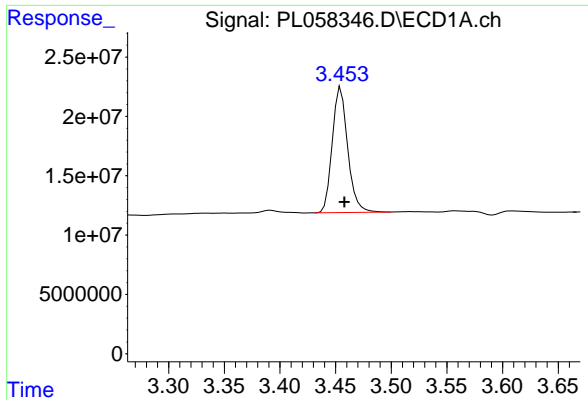
Data Path : Z:\pestpcbsrv\HPCHEM1\ECD_L\Data\PL042320\
 Data File : PL058346.D
 Signal(s) : Signal #1: ECD1A.ch Signal #2: ECD2B.ch
 Acq On : 23 Apr 2020 18:39
 Operator : AJ\MA
 Sample : L2394-03
 Misc :
 ALS Vial : 22 Sample Multiplier: 1

Instrument :
 ECD_L
 ClientSampled :
 B-1

Integration File signal 1: autoint1.e
 Integration File signal 2: autoint2.e
 Quant Time: Apr 24 00:56:01 2020
 Quant Method : Z:\pestpcbsrv\HPCHEM1\ECD_L\methods\PL040320.M
 Quant Title : GC Extractables
 QLast Update : Sat Apr 04 06:41:11 2020
 Response via : Initial Calibration
 Integrator: ChemStation

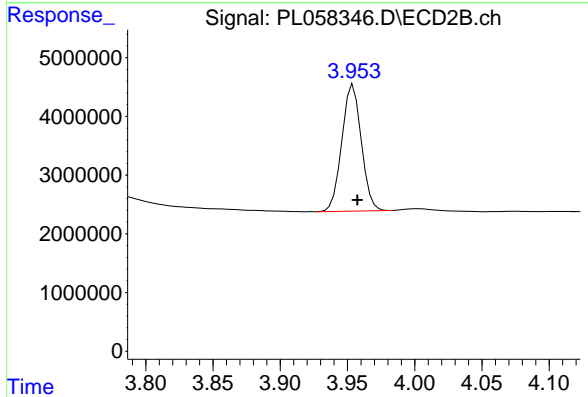
Volume Inj. : 1 µl
 Signal #1 Phase : ZB-MR2 Signal #2 Phase: ZB-MR1
 Signal #1 Info : 30M x 0.32mm x0.2 Signal #2 Info : 30M x 0.32mm x0.5µm



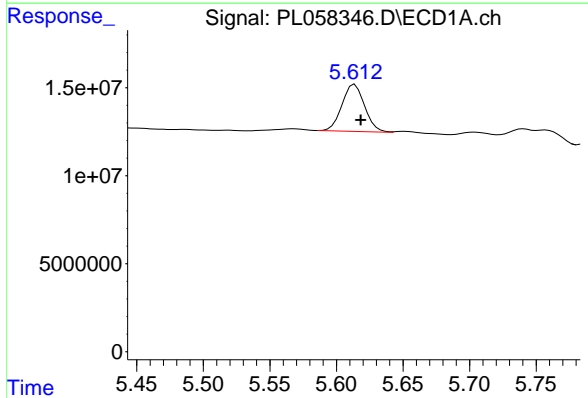


#1 Tetrachloro-m-xylene
 R.T.: 3.455 min
 Delta R.T.: -0.003 min
 Response: 102140959
 Conc: 10.13 ng/ml

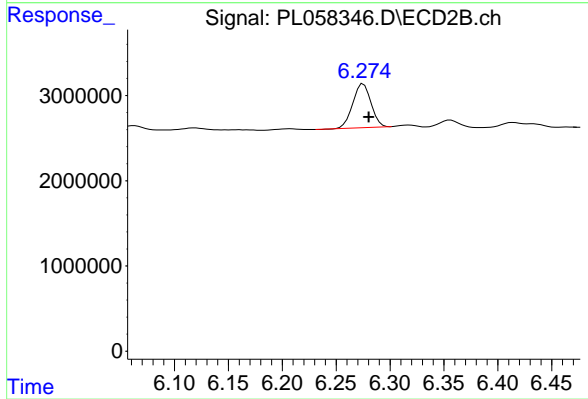
Instrument :
 ECD_L
 ClientSampleId :
 B-1



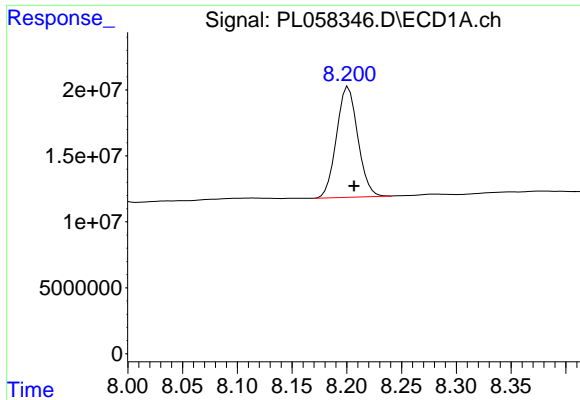
#1 Tetrachloro-m-xylene
 R.T.: 3.954 min
 Delta R.T.: -0.003 min
 Response: 21632541
 Conc: 9.97 ng/ml



#12 4,4'-DDE
 R.T.: 5.614 min
 Delta R.T.: -0.004 min
 Response: 31589781
 Conc: 2.41 ng/ml



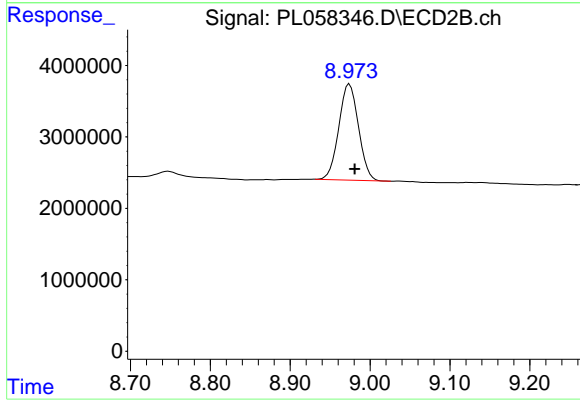
#12 4,4'-DDE
 R.T.: 6.275 min
 Delta R.T.: -0.005 min
 Response: 6077534
 Conc: 2.05 ng/ml



#28 Decachlorobiphenyl

R.T.: 8.201 min
Delta R.T.: -0.005 min
Response: 113327668
Conc: 10.99 ng/ml

Instrument :
ECD_L
ClientSampleId :
B-1



#28 Decachlorobiphenyl

R.T.: 8.974 min
Delta R.T.: -0.007 min
Response: 23034082
Conc: 10.31 ng/ml