

Data Path : Z:\pestpcbsrv\HPCHEM1\ECD_L\Data\PL042320\
 Data File : PL058352.D
 Signal(s) : Signal #1: ECD1A.ch Signal #2: ECD2B.ch
 Acq On : 23 Apr 2020 20:33
 Operator : AJ\MA
 Sample : I.BLK
 Misc :
 ALS Vial : 2 Sample Multiplier: 1

Instrument :
 ECD_L
 ClientSampleId :
 I.BLK

Integration File signal 1: autoint1.e
 Integration File signal 2: autoint2.e
 Quant Time: Apr 24 00:57:59 2020
 Quant Method : Z:\pestpcbsrv\HPCHEM1\ECD_L\methods\PL040320.M
 Quant Title : GC Extractables
 QLast Update : Sat Apr 04 06:41:11 2020
 Response via : Initial Calibration
 Integrator: ChemStation

Volume Inj. : 1 µl
 Signal #1 Phase : ZB-MR2 Signal #2 Phase: ZB-MR1
 Signal #1 Info : 30M x 0.32mm x0.2 Signal #2 Info : 30M x 0.32mm x0.5µm

Compound	RT#1	RT#2	Resp#1	Resp#2	ng/ml	ng/ml

System Monitoring Compounds						
1) SA Tetrachlo...	3.455	3.955	205.8E6	42497685	20.413	19.583
28) SA Decachlor...	8.202	8.976	204.2E6	40606593	19.809	18.178

Target Compounds

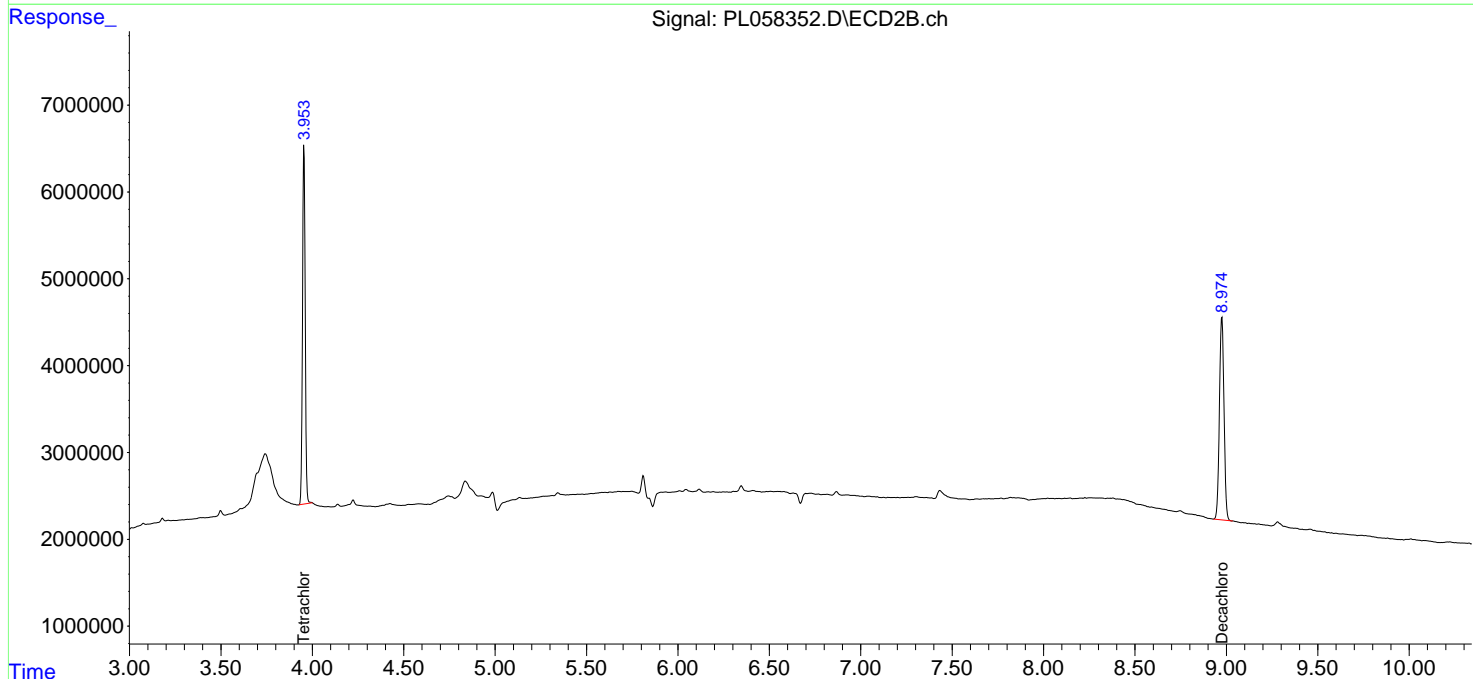
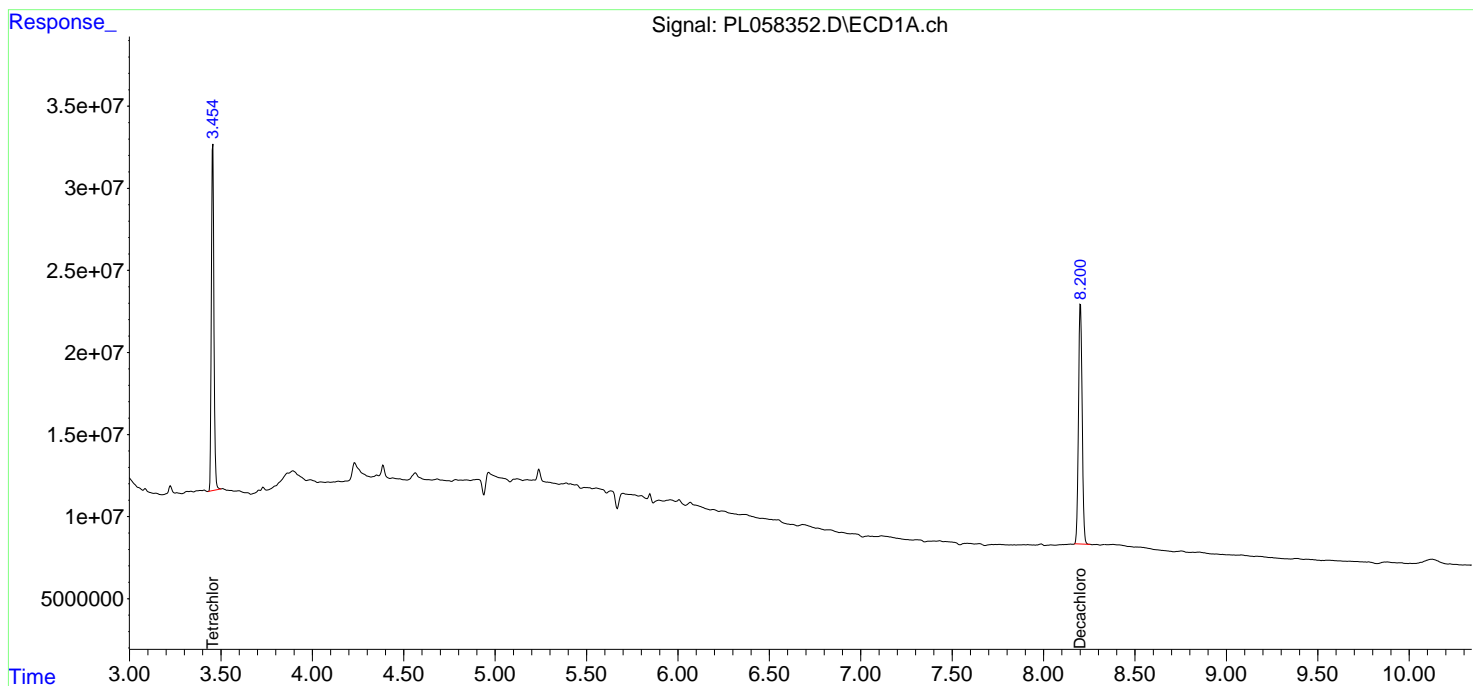
(f)=RT Delta > 1/2 Window (#)=Amounts differ by > 25% (m)=manual int.

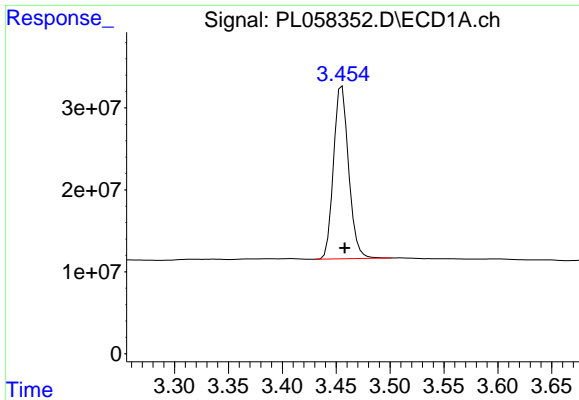
Data Path : Z:\pestpcbsrv\HPCHEM1\ECD_L\Data\PL042320\
 Data File : PL058352.D
 Signal(s) : Signal #1: ECD1A.ch Signal #2: ECD2B.ch
 Acq On : 23 Apr 2020 20:33
 Operator : AJ\MA
 Sample : I.BLK
 Misc :
 ALS Vial : 2 Sample Multiplier: 1

Instrument :
 ECD_L
 ClientSampled :
 I.BLK

Integration File signal 1: autoint1.e
 Integration File signal 2: autoint2.e
 Quant Time: Apr 24 00:57:59 2020
 Quant Method : Z:\pestpcbsrv\HPCHEM1\ECD_L\methods\PL040320.M
 Quant Title : GC Extractables
 QLast Update : Sat Apr 04 06:41:11 2020
 Response via : Initial Calibration
 Integrator: ChemStation

Volume Inj. : 1 µl
 Signal #1 Phase : ZB-MR2 Signal #2 Phase: ZB-MR1
 Signal #1 Info : 30M x 0.32mm x0.2 Signal #2 Info : 30M x 0.32mm x0.5µm

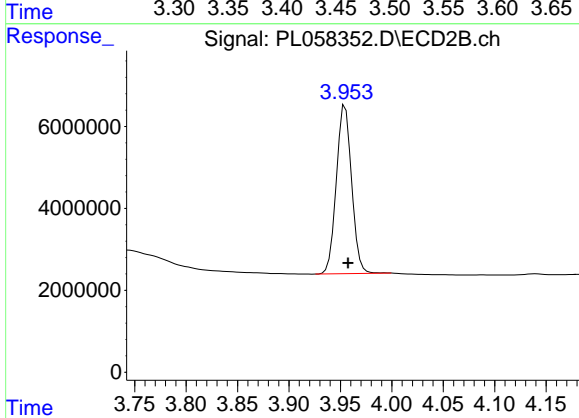




#1 Tetrachloro-m-xylene

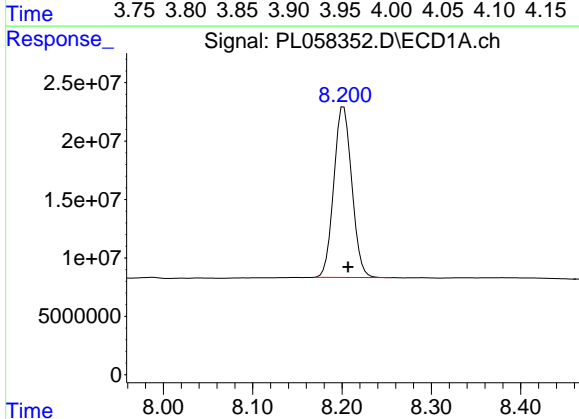
R.T.: 3.455 min
Delta R.T.: -0.003 min
Response: 205787035
Conc: 20.41 ng/ml

Instrument :
ECD_L
ClientSampled :
I.BLK



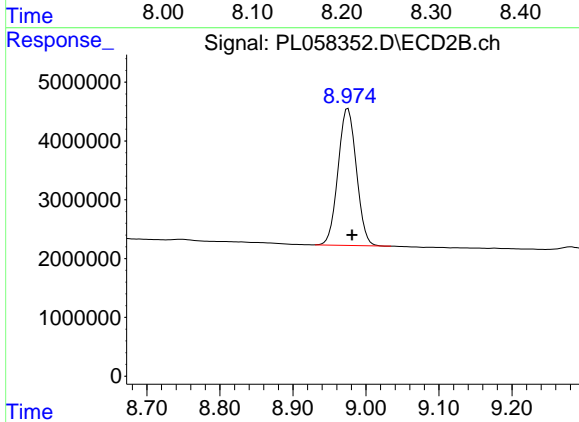
#1 Tetrachloro-m-xylene

R.T.: 3.955 min
Delta R.T.: -0.003 min
Response: 42497685
Conc: 19.58 ng/ml



#28 Decachlorobiphenyl

R.T.: 8.202 min
Delta R.T.: -0.005 min
Response: 204202718
Conc: 19.81 ng/ml



#28 Decachlorobiphenyl

R.T.: 8.976 min
Delta R.T.: -0.005 min
Response: 40606593
Conc: 18.18 ng/ml