

Data Path : Z:\pestpcbsrv\HPCHEM1\ECD_L\Data\PL042324\
 Data File : PL089136.D
 Signal(s) : Signal #1: ECD1A.ch Signal #2: ECD2B.ch
 Acq On : 23 Apr 2024 09:54
 Operator : AR\AJ
 Sample : P2178-01RE
 Misc :
 ALS Vial : 5 Sample Multiplier: 1

Instrument :
 ECD_L
ClientSampleId :
 TOPSOIL-LKWD-DENALI-4RE

Manual Integrations
APPROVED

Reviewed By :Abdul Mirza 04/24/2024
 Supervised By :Ankita Jodhani 04/24/2024

Integration File signal 1: autoint1.e
 Integration File signal 2: autoint2.e
 Quant Time: Apr 23 11:44:47 2024
 Quant Method : Z:\pestpcbsrv\HPCHEM1\ECD_L\methods\PL041524.M
 Quant Title : GC Extractables
 QLast Update : Mon Apr 15 18:43:22 2024
 Response via : Initial Calibration
 Integrator: ChemStation

Volume Inj. : 1 µl
 Signal #1 Phase : ZB-MR2 Signal #2 Phase: ZB-MR1
 Signal #1 Info : 30M x 0.32mm x0.2 Signal #2 Info : 30M x 0.32mm x0.5µm

Compound	RT#1	RT#2	Resp#1	Resp#2	ng/ml	ng/ml

System Monitoring Compounds						
1) SA Tetrachlo...	3.554	2.798	24425819	14393470	11.493	10.799
28) SA Decachlor...	9.066	7.950	10467493	10186778	8.218	7.607
Target Compounds						
11) B alpha-Chl...	6.035	5.073	3231225	901982	1.411m	0.545m#
12) B 4,4'-DDE	6.203	5.263	5064166	2845613	2.520m	1.935m
17) MA 4,4'-DDT	7.033	6.069	2442182	1343119	1.340	1.025

(f)=RT Delta > 1/2 Window (#)=Amounts differ by > 25% (m)=manual int.

Data Path : Z:\pestpcbsrv\HPCHEM1\ECD_L\Data\PL042324\
 Data File : PL089136.D
 Signal(s) : Signal #1: ECD1A.ch Signal #2: ECD2B.ch
 Acq On : 23 Apr 2024 09:54
 Operator : AR\AJ
 Sample : P2178-01RE
 Misc :
 ALS Vial : 5 Sample Multiplier: 1

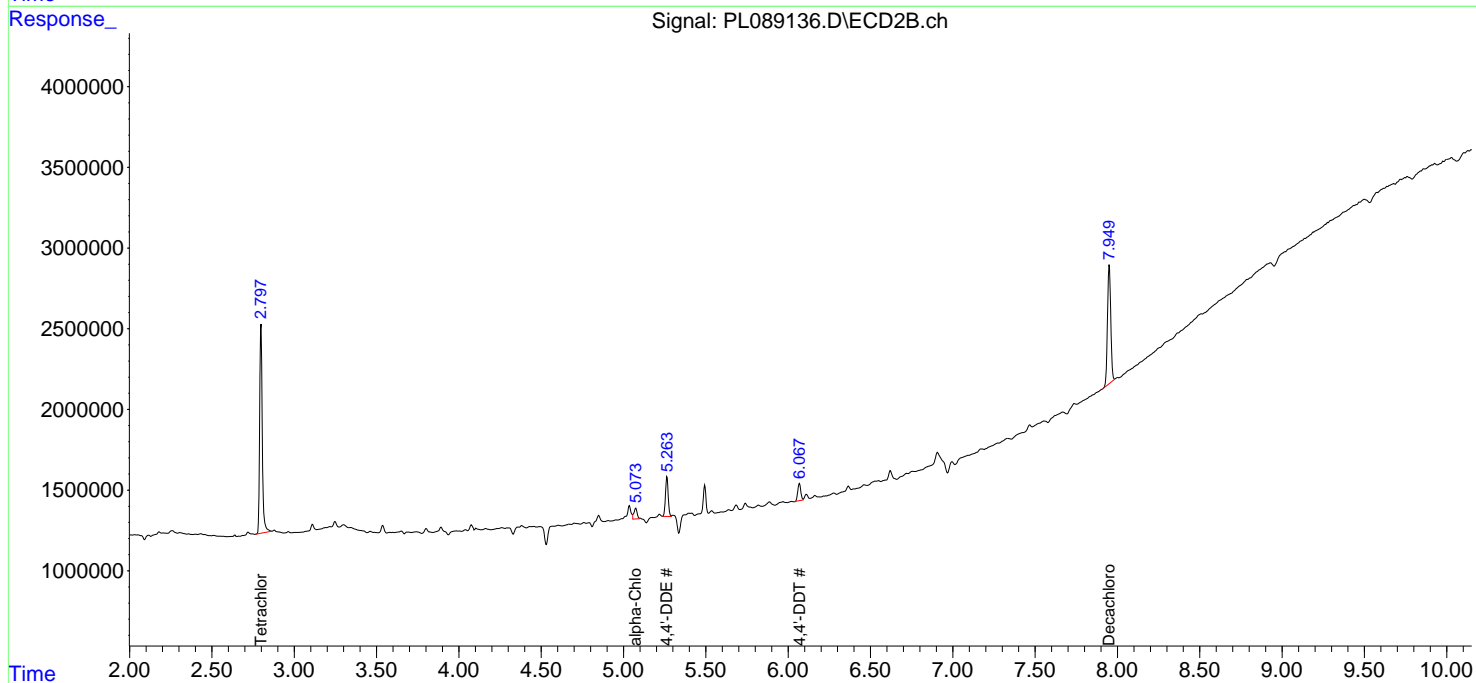
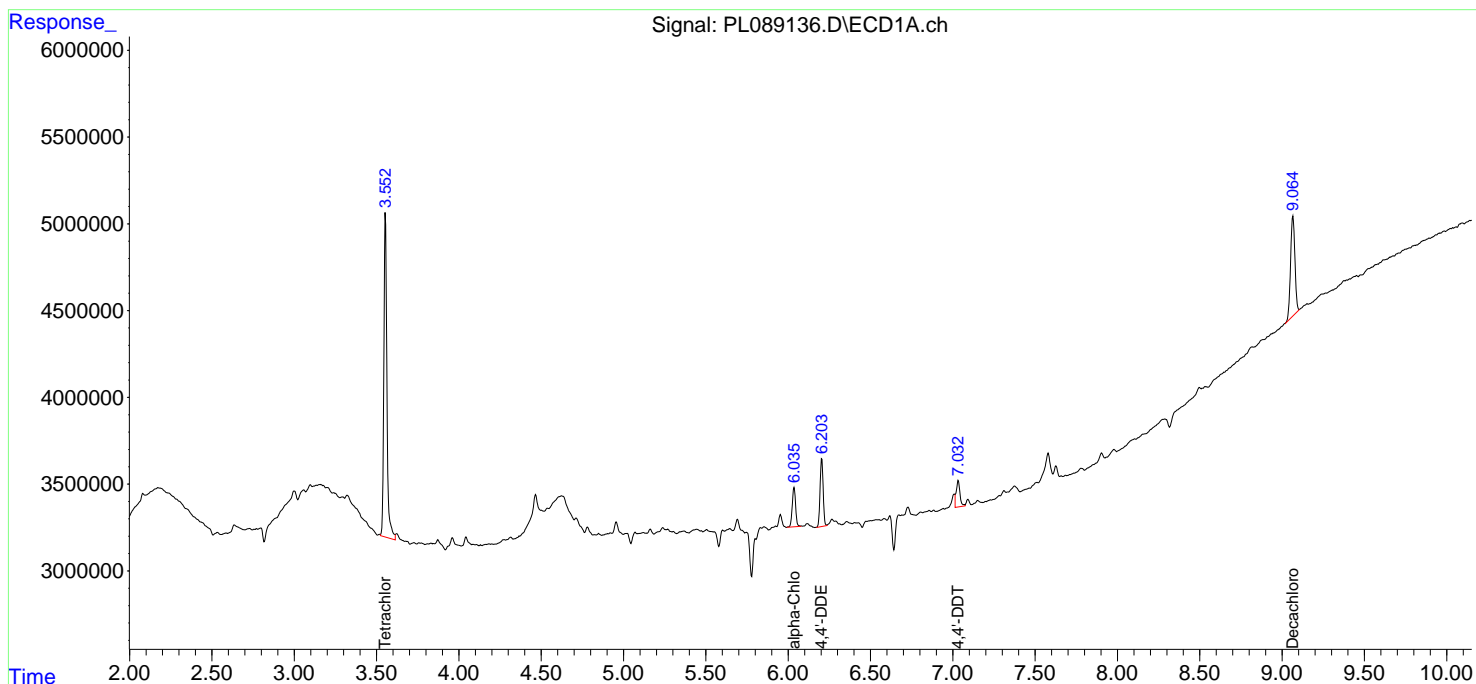
Instrument :
 ECD_L
ClientSampleId :
 TOPSOIL-LKWD-DENALI-4RE

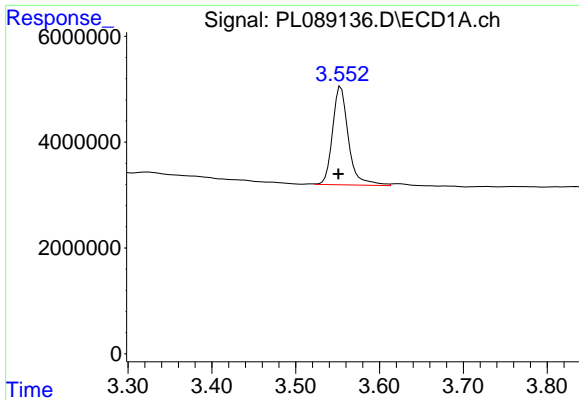
Manual Integrations
APPROVED

Reviewed By :Abdul Mirza 04/24/2024
 Supervised By :Ankita Jodhani 04/24/2024

Integration File signal 1: autoint1.e
 Integration File signal 2: autoint2.e
 Quant Time: Apr 23 11:44:47 2024
 Quant Method : Z:\pestpcbsrv\HPCHEM1\ECD_L\methods\PL041524.M
 Quant Title : GC Extractables
 QLast Update : Mon Apr 15 18:43:22 2024
 Response via : Initial Calibration
 Integrator: ChemStation

Volume Inj. : 1 µl
 Signal #1 Phase : ZB-MR2 Signal #2 Phase: ZB-MR1
 Signal #1 Info : 30M x 0.32mm x0.2 Signal #2 Info : 30M x 0.32mm x0.5µm





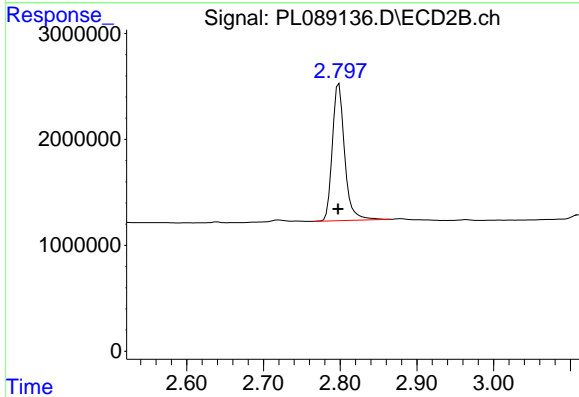
#1 Tetrachloro-m-xylene

R.T.: 3.554 min
 Delta R.T.: 0.003 min
 Response: 24425819
 Conc: 11.49 ng/ml

Instrument : ECD_L
 ClientSampleId : TOPSOIL-LKWD-DENALI-4RE

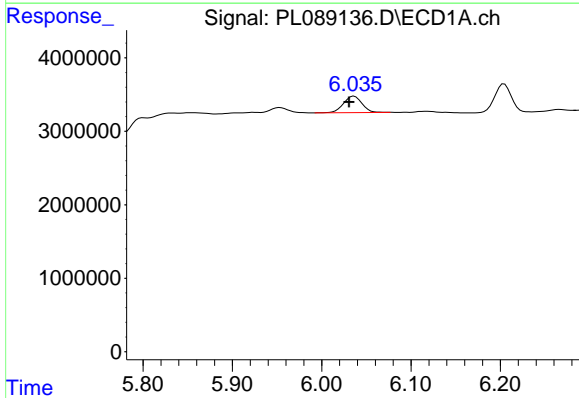
Manual Integrations
 APPROVED

Reviewed By :Abdul Mirza 04/24/2024
 Supervised By :Ankita Jodhani 04/24/2024



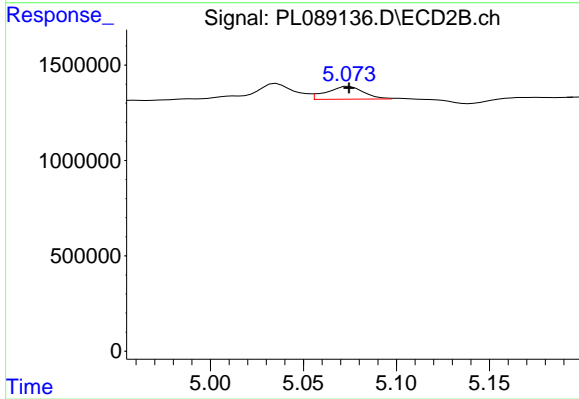
#1 Tetrachloro-m-xylene

R.T.: 2.798 min
 Delta R.T.: 0.001 min
 Response: 14393470
 Conc: 10.80 ng/ml



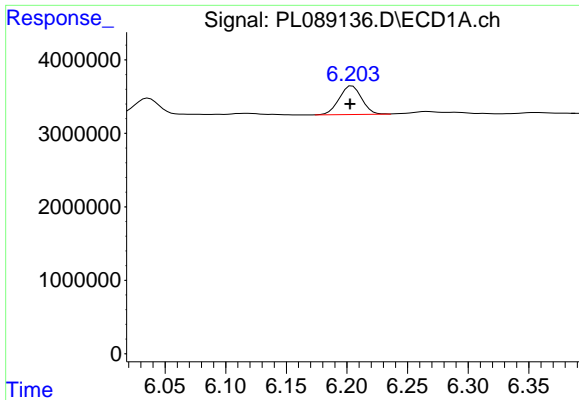
#11 alpha-Chlordane

R.T.: 6.035 min
 Delta R.T.: 0.004 min
 Response: 3231225
 Conc: 1.41 ng/ml m



#11 alpha-Chlordane

R.T.: 5.073 min
 Delta R.T.: -0.001 min
 Response: 901982
 Conc: 0.55 ng/ml m



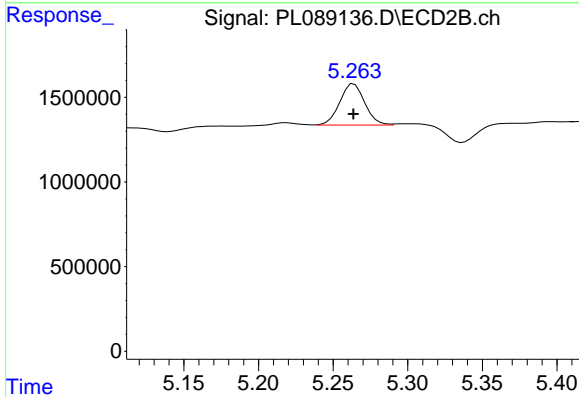
#12 4,4'-DDE

R.T.: 6.203 min
 Delta R.T.: 0.000 min
 Response: 5064166
 Conc: 2.52 ng/ml

Instrument : ECD_L
 ClientSampleId : TOPSOIL-LKWD-DENALI-4RE

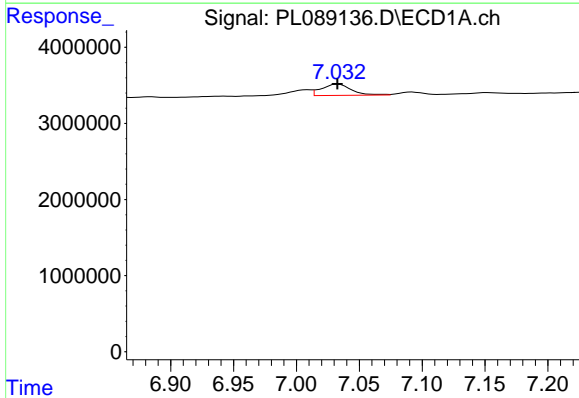
Manual Integrations
 APPROVED

Reviewed By :Abdul Mirza 04/24/2024
 Supervised By :Ankita Jodhani 04/24/2024



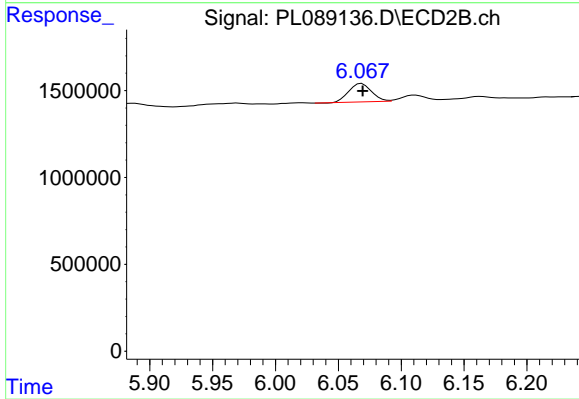
#12 4,4'-DDE

R.T.: 5.263 min
 Delta R.T.: 0.000 min
 Response: 2845613
 Conc: 1.94 ng/ml m



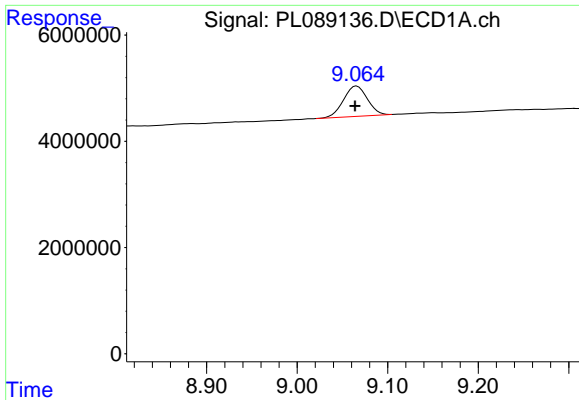
#17 4,4'-DDT

R.T.: 7.033 min
 Delta R.T.: 0.000 min
 Response: 2442182
 Conc: 1.34 ng/ml



#17 4,4'-DDT

R.T.: 6.069 min
 Delta R.T.: 0.000 min
 Response: 1343119
 Conc: 1.02 ng/ml



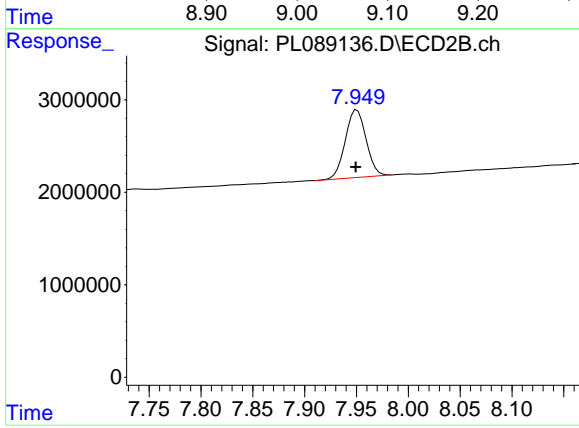
#28 Decachlorobiphenyl

R.T.: 9.066 min
 Delta R.T.: 0.002 min
 Response: 10467493
 Conc: 8.22 ng/ml

Instrument :
 ECD_L
 ClientSampleId :
 TOPSOIL-LKWD-DENALI-4RE

Manual Integrations
 APPROVED

Reviewed By :Abdul Mirza 04/24/2024
 Supervised By :Ankita Jodhani 04/24/2024



#28 Decachlorobiphenyl

R.T.: 7.950 min
 Delta R.T.: 0.001 min
 Response: 10186778
 Conc: 7.61 ng/ml