

Data Path : Z:\pestpcbsrv\HPCHEM1\ECD\_L\Data\PL042325\  
 Data File : PL095348.D  
 Signal(s) : Signal #1: ECD1A.ch Signal #2: ECD2B.ch  
 Acq On : 23 Apr 2025 16:52  
 Operator : AR\AJ  
 Sample : PEM  
 Misc :  
 ALS Vial : 3 Sample Multiplier: 1

Instrument :  
 ECD\_L  
 ClientSampleId :

Integration File signal 1: autoint1.e  
 Integration File signal 2: autoint2.e  
 Quant Time: Apr 24 01:26:26 2025  
 Quant Method : Z:\pestpcbsrv\HPCHEM1\ECD\_L\methods\PL042325.M  
 Quant Title : GC Extractables  
 QLast Update : Wed Apr 23 16:23:18 2025  
 Response via : Initial Calibration  
 Integrator: ChemStation

Volume Inj. : 1 µl  
 Signal #1 Phase : ZB-MR1 Signal #2 Phase: ZB-MR2  
 Signal #1 Info : 30M x 0.32mm x0.5 Signal #2 Info : 30M x 0.32mm x0.25µm

| Compound                    | RT#1  | RT#2  | Resp#1   | Resp#2   | ng/ml   | ng/ml   |
|-----------------------------|-------|-------|----------|----------|---------|---------|
| -----                       |       |       |          |          |         |         |
| System Monitoring Compounds |       |       |          |          |         |         |
| 1) SA Tetrachlo...          | 3.594 | 2.905 | 76572321 | 73420889 | 23.455  | 23.090  |
| 28) SA Decachlor...         | 9.120 | 8.087 | 69184917 | 70438870 | 24.969  | 23.803  |
| Target Compounds            |       |       |          |          |         |         |
| 2) A alpha-BHC              | 4.045 | 3.414 | 56500964 | 50059202 | 11.406  | 11.252  |
| 3) MA gamma-BHC...          | 4.376 | 3.748 | 56657932 | 50048889 | 11.968  | 11.379  |
| 6) B beta-BHC               | 4.562 | 4.042 | 24004571 | 24396103 | 11.610  | 11.752  |
| 14) MA Endrin               | 6.622 | 5.805 | 188.1E6  | 204.6E6  | 59.057  | 56.184  |
| 16) A 4,4'-DDD              | 6.751 | 5.947 | 5751204  | 4932083  | 2.032   | 1.510 # |
| 17) MA 4,4'-DDT             | 7.066 | 6.202 | 338.5E6  | 393.2E6  | 118.828 | 114.426 |
| 20) A Methoxychlor          | 7.538 | 6.772 | 386.4E6  | 479.8E6  | 276.958 | 251.527 |
| -----                       |       |       |          |          |         |         |

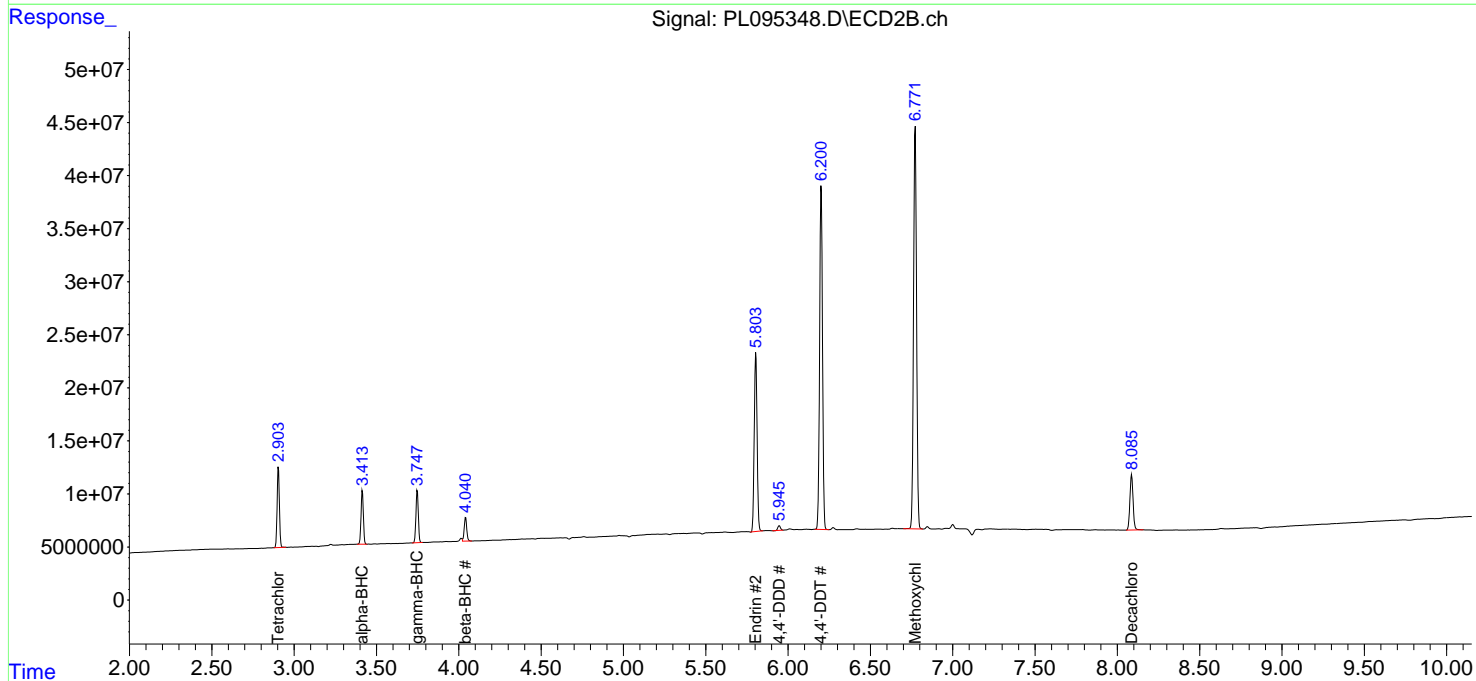
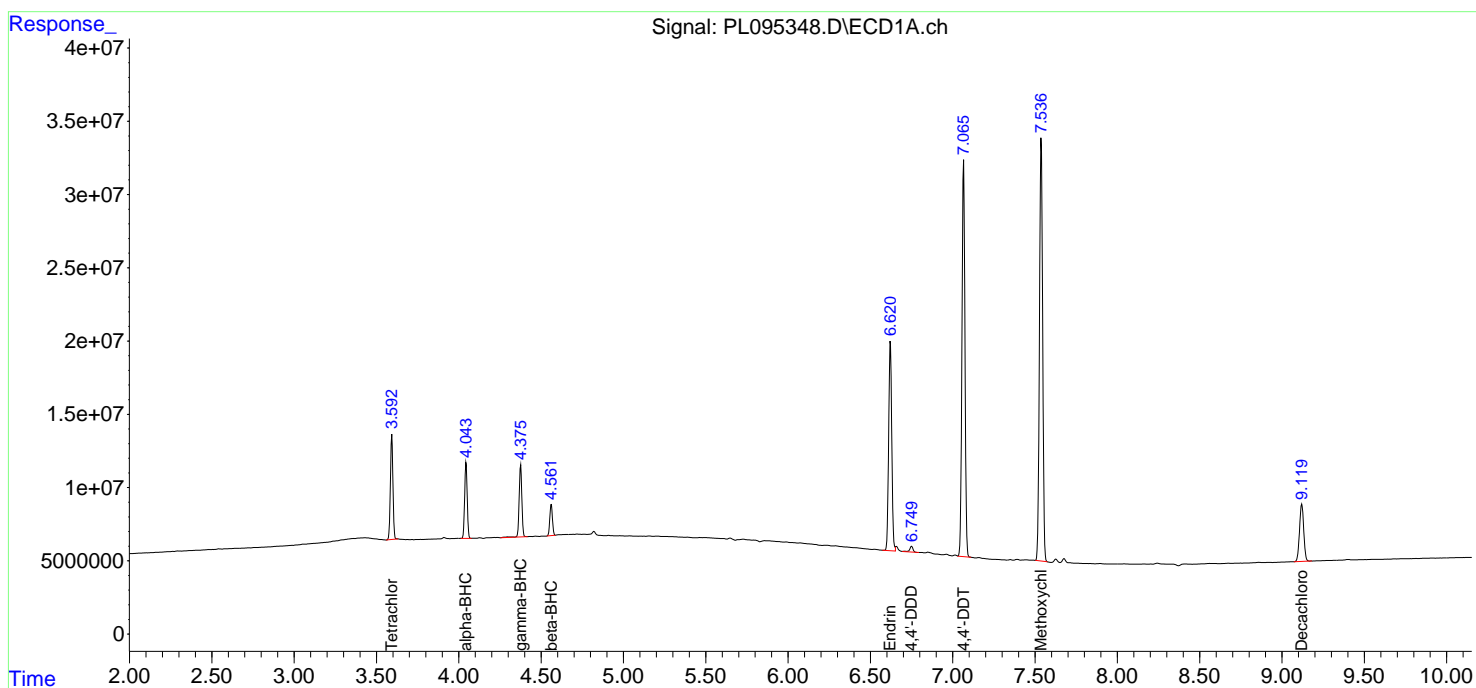
(f)=RT Delta > 1/2 Window (#)=Amounts differ by > 25% (m)=manual int.

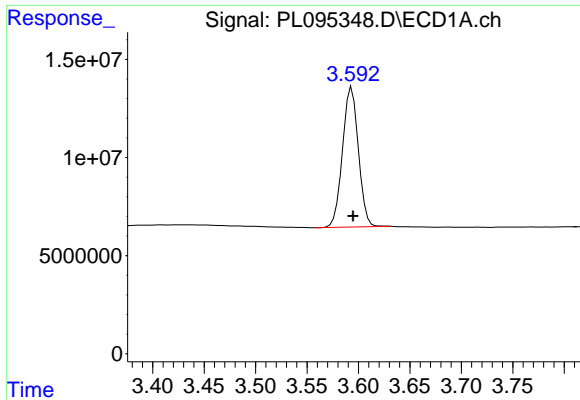
Data Path : Z:\pestpcbsrv\HPCHEM1\ECD\_L\Data\PL042325\  
 Data File : PL095348.D  
 Signal(s) : Signal #1: ECD1A.ch Signal #2: ECD2B.ch  
 Acq On : 23 Apr 2025 16:52  
 Operator : AR\AJ  
 Sample : PEM  
 Misc :  
 ALS Vial : 3 Sample Multiplier: 1

Instrument :  
 ECD\_L  
 ClientSampleId :

Integration File signal 1: autoint1.e  
 Integration File signal 2: autoint2.e  
 Quant Time: Apr 24 01:26:26 2025  
 Quant Method : Z:\pestpcbsrv\HPCHEM1\ECD\_L\methods\PL042325.M  
 Quant Title : GC Extractables  
 QLast Update : Wed Apr 23 16:23:18 2025  
 Response via : Initial Calibration  
 Integrator: ChemStation

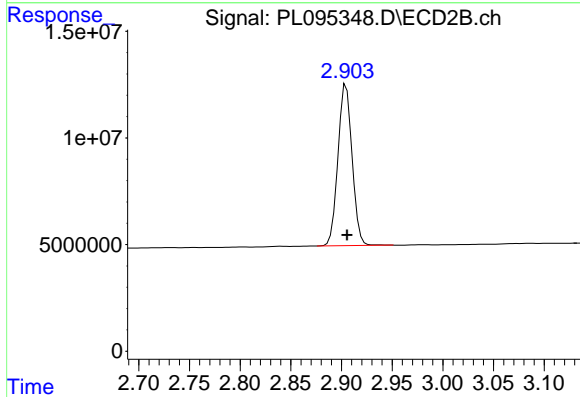
Volume Inj. : 1 µl  
 Signal #1 Phase : ZB-MR1 Signal #2 Phase: ZB-MR2  
 Signal #1 Info : 30M x 0.32mm x0.5 Signal #2 Info : 30M x 0.32mm x0.25µm



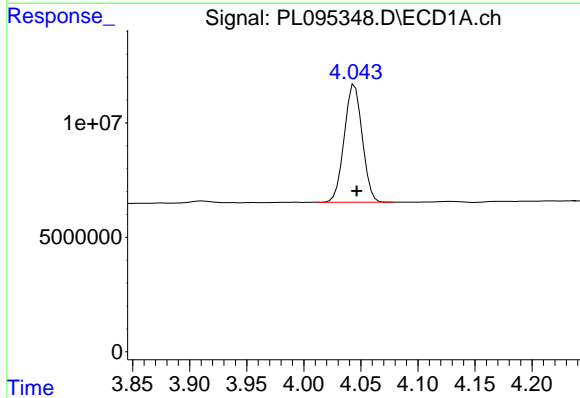


#1 Tetrachloro-m-xylene  
 R.T.: 3.594 min  
 Delta R.T.: -0.001 min  
 Response: 76572321  
 Conc: 23.45 ng/ml

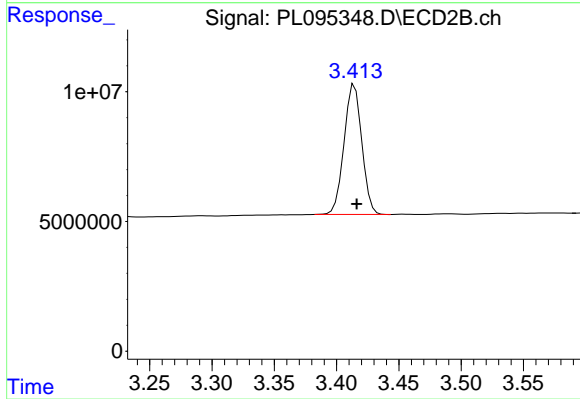
Instrument :  
 ECD\_L  
 ClientSampleId :



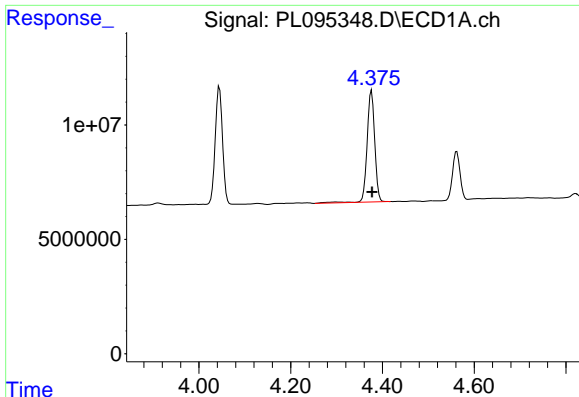
#1 Tetrachloro-m-xylene  
 R.T.: 2.905 min  
 Delta R.T.: 0.000 min  
 Response: 73420889  
 Conc: 23.09 ng/ml



#2 alpha-BHC  
 R.T.: 4.045 min  
 Delta R.T.: -0.002 min  
 Response: 56500964  
 Conc: 11.41 ng/ml



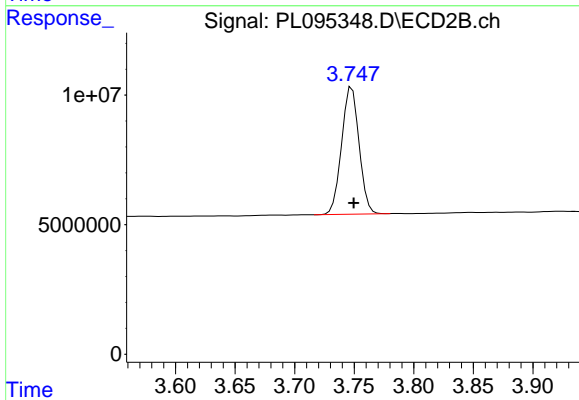
#2 alpha-BHC  
 R.T.: 3.414 min  
 Delta R.T.: -0.002 min  
 Response: 50059202  
 Conc: 11.25 ng/ml



#3 gamma-BHC (Lindane)

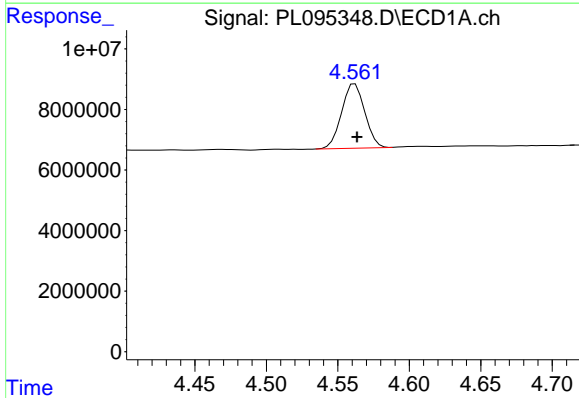
R.T.: 4.376 min  
 Delta R.T.: -0.001 min  
 Response: 56657932  
 Conc: 11.97 ng/ml

Instrument :  
 ECD\_L  
 ClientSampleId :



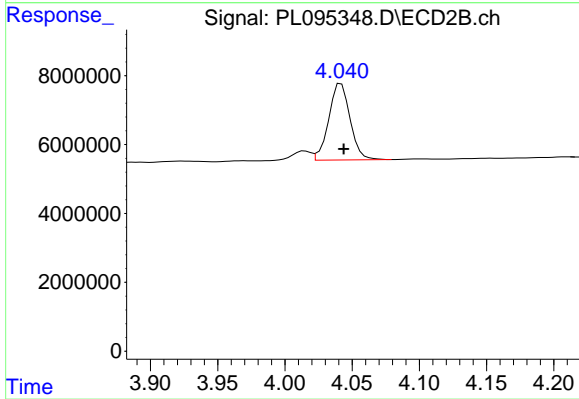
#3 gamma-BHC (Lindane)

R.T.: 3.748 min  
 Delta R.T.: -0.002 min  
 Response: 50048889  
 Conc: 11.38 ng/ml



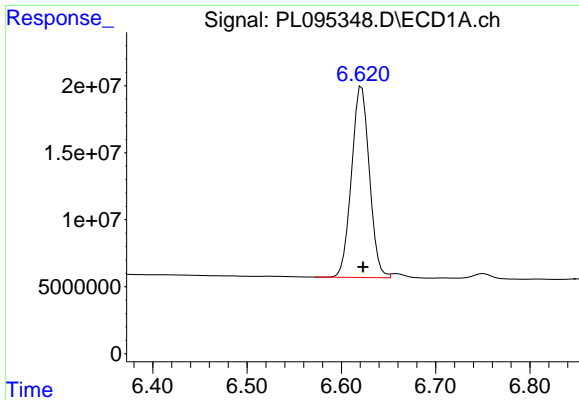
#6 beta-BHC

R.T.: 4.562 min  
 Delta R.T.: -0.002 min  
 Response: 24004571  
 Conc: 11.61 ng/ml



#6 beta-BHC

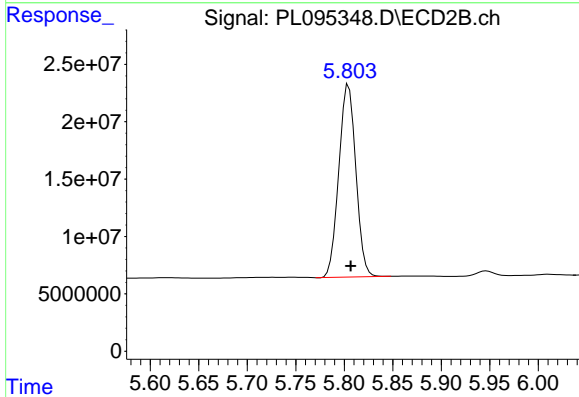
R.T.: 4.042 min  
 Delta R.T.: -0.002 min  
 Response: 24396103  
 Conc: 11.75 ng/ml



#14 Endrin

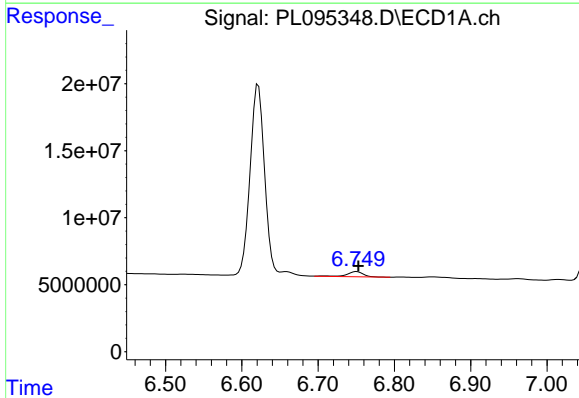
R.T.: 6.622 min  
 Delta R.T.: -0.002 min  
 Response: 188081704  
 Conc: 59.06 ng/ml

Instrument :  
 ECD\_L  
 ClientSampleId :



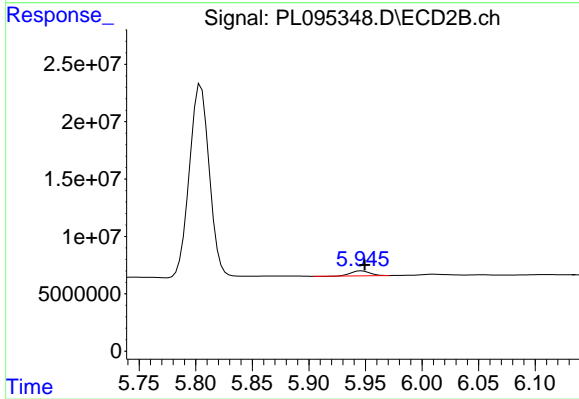
#14 Endrin

R.T.: 5.805 min  
 Delta R.T.: -0.002 min  
 Response: 204551244  
 Conc: 56.18 ng/ml



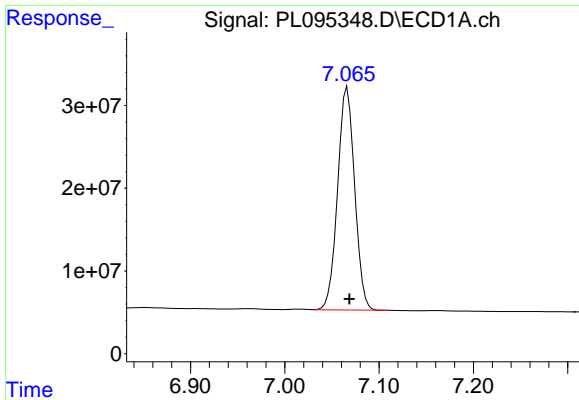
#16 4,4'-DDD

R.T.: 6.751 min  
 Delta R.T.: -0.002 min  
 Response: 5751204  
 Conc: 2.03 ng/ml



#16 4,4'-DDD

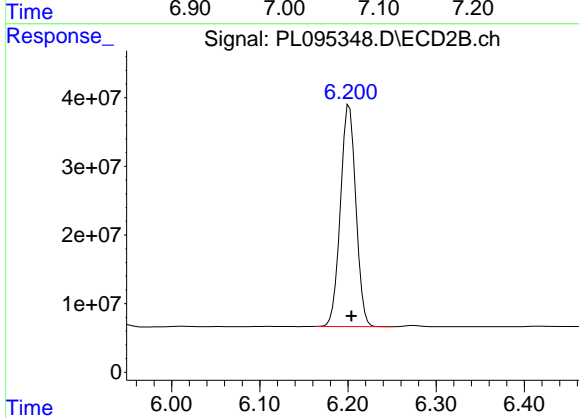
R.T.: 5.947 min  
 Delta R.T.: -0.003 min  
 Response: 4932083  
 Conc: 1.51 ng/ml



#17 4,4'-DDT

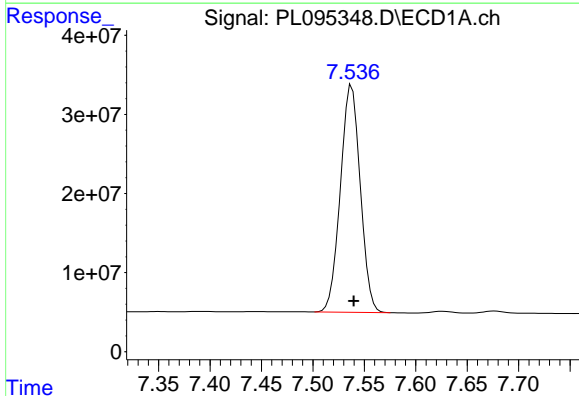
R.T.: 7.066 min  
 Delta R.T.: -0.002 min  
 Response: 338490899  
 Conc: 118.83 ng/ml

Instrument :  
 ECD\_L  
 ClientSampleId :



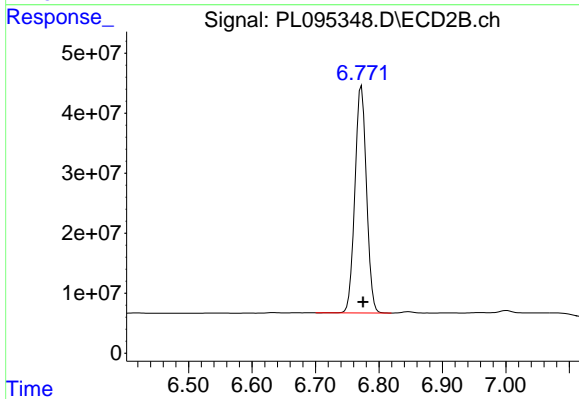
#17 4,4'-DDT

R.T.: 6.202 min  
 Delta R.T.: -0.002 min  
 Response: 393187337  
 Conc: 114.43 ng/ml



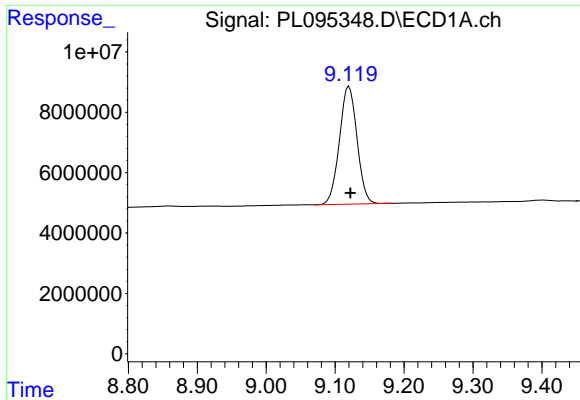
#20 Methoxychlor

R.T.: 7.538 min  
 Delta R.T.: -0.002 min  
 Response: 386392937  
 Conc: 276.96 ng/ml



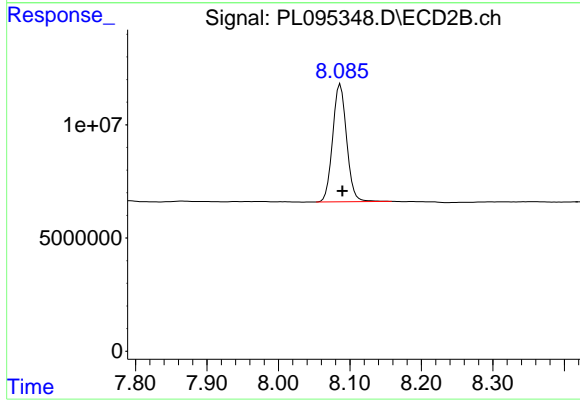
#20 Methoxychlor

R.T.: 6.772 min  
 Delta R.T.: -0.002 min  
 Response: 479768730  
 Conc: 251.53 ng/ml



#28 Decachlorobiphenyl  
R.T.: 9.120 min  
Delta R.T.: -0.002 min  
Response: 69184917  
Conc: 24.97 ng/ml

Instrument :  
ECD\_L  
ClientSampleId :



#28 Decachlorobiphenyl  
R.T.: 8.087 min  
Delta R.T.: -0.003 min  
Response: 70438870  
Conc: 23.80 ng/ml