

Data Path : Z:\pestpcbsrv\HPCHEM1\ECD_L\Data\PL042325\
 Data File : PL095351.D
 Signal(s) : Signal #1: ECD1A.ch Signal #2: ECD2B.ch
 Acq On : 23 Apr 2025 17:33
 Operator : AR\AJ
 Sample : PB167688BS
 Misc :
 ALS Vial : 24 Sample Multiplier: 1

Instrument :
 ECD_L
 ClientSampleId :

Integration File signal 1: autoint1.e
 Integration File signal 2: autoint2.e
 Quant Time: Apr 24 01:26:54 2025
 Quant Method : Z:\pestpcbsrv\HPCHEM1\ECD_L\methods\PL042325.M
 Quant Title : GC Extractables
 QLast Update : Wed Apr 23 16:23:18 2025
 Response via : Initial Calibration
 Integrator: ChemStation

Volume Inj. : 1 µl
 Signal #1 Phase : ZB-MR1 Signal #2 Phase: ZB-MR2
 Signal #1 Info : 30M x 0.32mm x0.5 Signal #2 Info : 30M x 0.32mm x0.25µm

	Compound	RT#1	RT#2	Resp#1	Resp#2	ng/ml	ng/ml

System Monitoring Compounds							
1)	SA Tetrachlo...	3.594	2.905	66566543	63105671	20.390	19.846
28)	SA Decachlor...	9.120	8.087	61054848	63750256	22.035	21.543
Target Compounds							
2)	A alpha-BHC	4.045	3.415	251.7E6	223.5E6	50.816	50.243
3)	MA gamma-BHC...	4.377	3.749	243.6E6	221.8E6	51.455	50.423
4)	MA Heptachlor	4.975	4.103	235.3E6	216.6E6	51.435	49.721
5)	MB Aldrin	5.316	4.388	234.2E6	243.4E6	50.990	59.137
6)	B beta-BHC	4.562	4.042	105.8E6	105.2E6	51.174	50.673
7)	B delta-BHC	0.000	4.279	0	225.5E6	N.D.	51.467 #
8)	B Heptachlo...	5.737	4.892	246.3E6	193.1E6	61.500	49.999
9)	A Endosulfan I	6.121	5.264	236.8E6	173.5E6	62.355	47.396
10)	B gamma-Chl...	5.992	5.144	255.1E6	213.0E6	62.523	52.565
11)	B alpha-Chl...	6.073	5.209	248.0E6	211.3E6	60.987	53.078
12)	B 4,4'-DDE	6.241	5.395	213.2E6	244.9E6	54.376	60.208
13)	MA Dieldrin	6.394	5.530	202.6E6	221.6E6	52.549	54.494
14)	MA Endrin	6.621	5.805	192.0E6	187.7E6	60.273	51.556
15)	B Endosulfa...	6.833	6.095	209.2E6	186.5E6	65.525	51.935
16)	A 4,4'-DDD	6.751	5.947	202.5E6	171.3E6	71.527	52.424 #
17)	MA 4,4'-DDT	7.067	6.201	156.1E6	168.8E6	54.808	49.111
18)	B Endrin al...	6.963	6.273	145.4E6	136.5E6	62.667	52.229
19)	B Endosulfa...	7.196	6.496	146.6E6	166.5E6	52.330	50.189
20)	A Methoxychlor	7.537	6.772	66036161	93533042	47.333	49.036
21)	B Endrin ke...	7.678	7.002	150.1E6	178.4E6	52.639	50.652
22)	Mirex	8.159	7.199	124.7E6	142.5E6	52.461	49.427
24)	Chlordane-2	5.316f	4.528f	234.2E6	17839373	1106.187	96.938 #
25)	Chlordane-3	5.992	5.144	255.1E6	213.0E6	327.444	412.346 #
26)	Chlordane-4	6.073	5.209	248.0E6	211.3E6	262.987	486.197 #
27)	Chlordane-5	6.907	6.095	11925997	186.5E6	78.674	1009.549 #

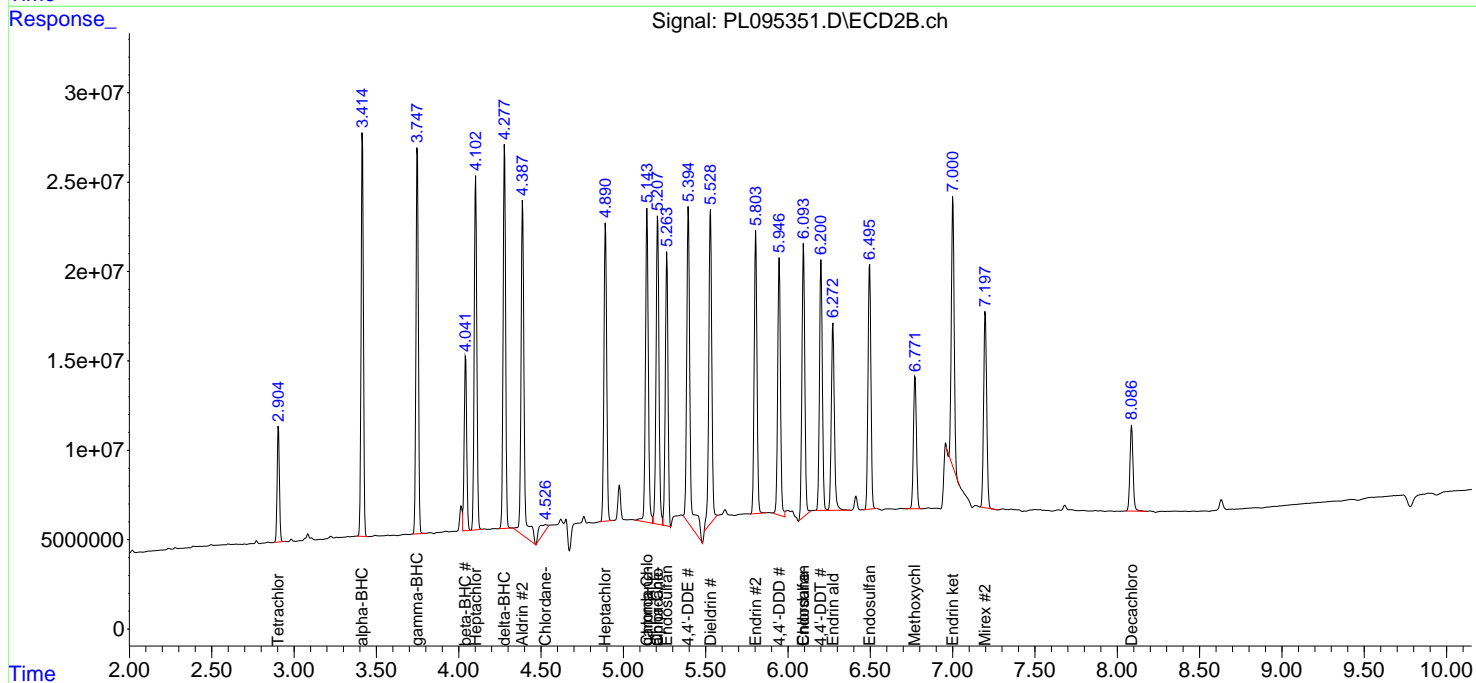
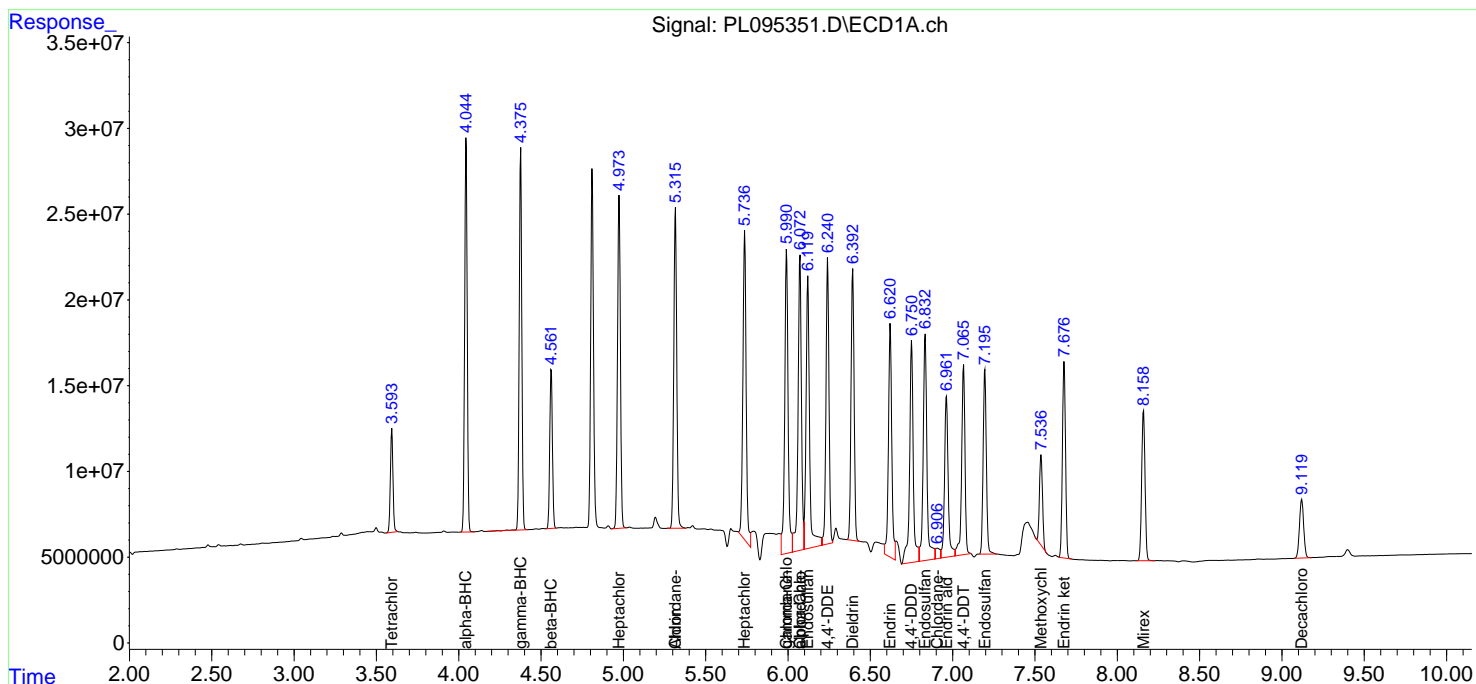
(f)=RT Delta > 1/2 Window (#)=Amounts differ by > 25% (m)=manual int.

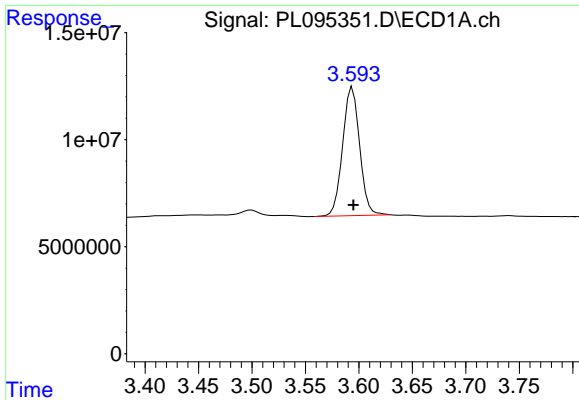
Data Path : Z:\pestpcbsrv\HPCHEM1\ECD_L\Data\PL042325\
 Data File : PL095351.D
 Signal(s) : Signal #1: ECD1A.ch Signal #2: ECD2B.ch
 Acq On : 23 Apr 2025 17:33
 Operator : AR\AJ
 Sample : PB167688BS
 Misc :
 ALS Vial : 24 Sample Multiplier: 1

Instrument :
 ECD_L
 ClientSampleId :

Integration File signal 1: autoint1.e
 Integration File signal 2: autoint2.e
 Quant Time: Apr 24 01:26:54 2025
 Quant Method : Z:\pestpcbsrv\HPCHEM1\ECD_L\methods\PL042325.M
 Quant Title : GC Extractables
 QLast Update : Wed Apr 23 16:23:18 2025
 Response via : Initial Calibration
 Integrator: ChemStation

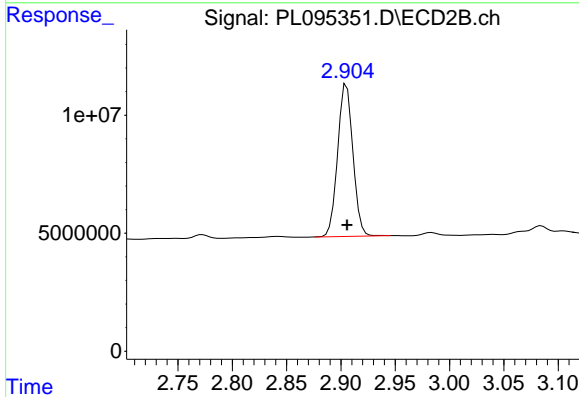
Volume Inj. : 1 µl
 Signal #1 Phase : ZB-MR1 Signal #2 Phase: ZB-MR2
 Signal #1 Info : 30M x 0.32mm x0.5 Signal #2 Info : 30M x 0.32mm x0.25µm



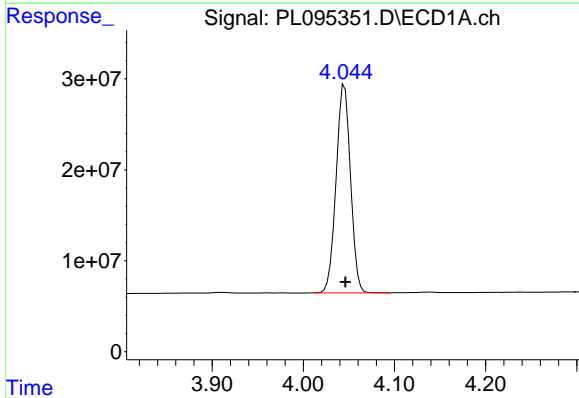


#1 Tetrachloro-m-xylene
 R.T.: 3.594 min
 Delta R.T.: 0.000 min
 Response: 66566543
 Conc: 20.39 ng/ml

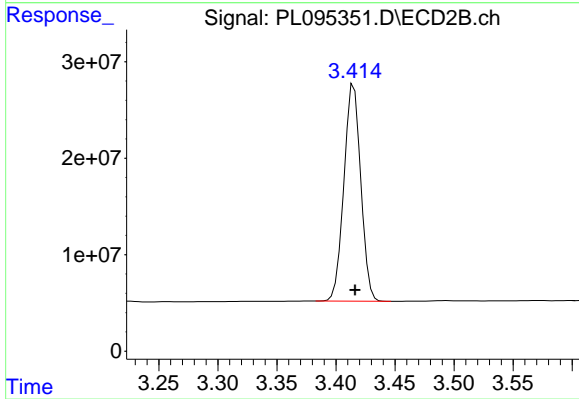
Instrument :
 ECD_L
 ClientSampleId :



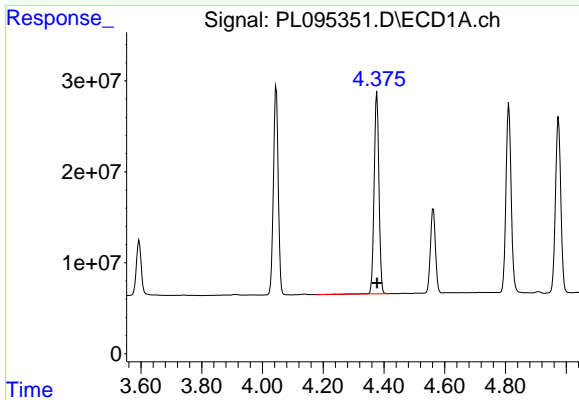
#1 Tetrachloro-m-xylene
 R.T.: 2.905 min
 Delta R.T.: 0.000 min
 Response: 63105671
 Conc: 19.85 ng/ml



#2 alpha-BHC
 R.T.: 4.045 min
 Delta R.T.: 0.000 min
 Response: 251729145
 Conc: 50.82 ng/ml

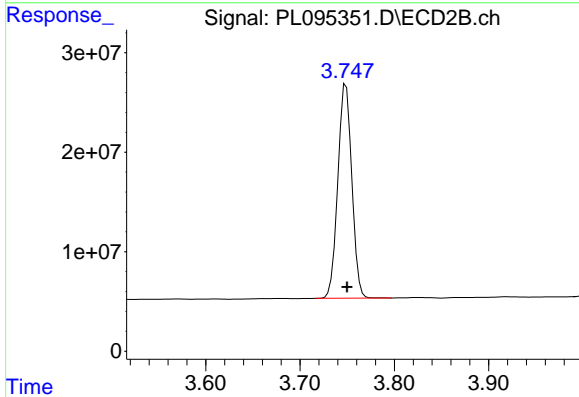


#2 alpha-BHC
 R.T.: 3.415 min
 Delta R.T.: 0.000 min
 Response: 223518215
 Conc: 50.24 ng/ml

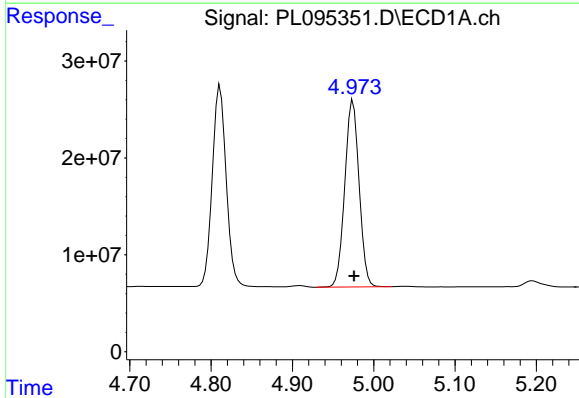


#3 gamma-BHC (Lindane)
 R.T.: 4.377 min
 Delta R.T.: 0.000 min
 Response: 243585200
 Conc: 51.45 ng/ml

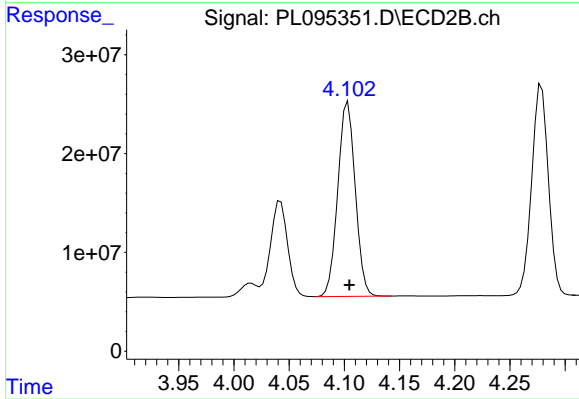
Instrument :
 ECD_L
 ClientSampleId :



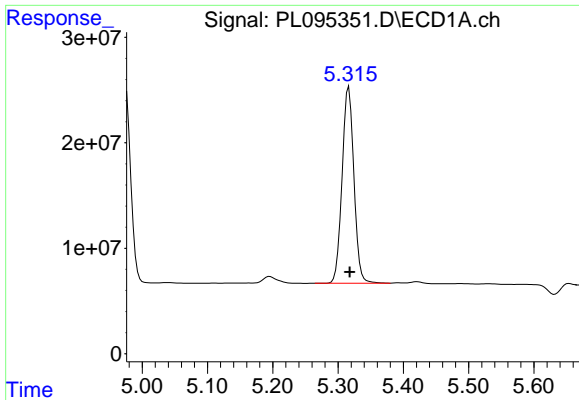
#3 gamma-BHC (Lindane)
 R.T.: 3.749 min
 Delta R.T.: 0.000 min
 Response: 221771464
 Conc: 50.42 ng/ml



#4 Heptachlor
 R.T.: 4.975 min
 Delta R.T.: -0.001 min
 Response: 235289206
 Conc: 51.44 ng/ml

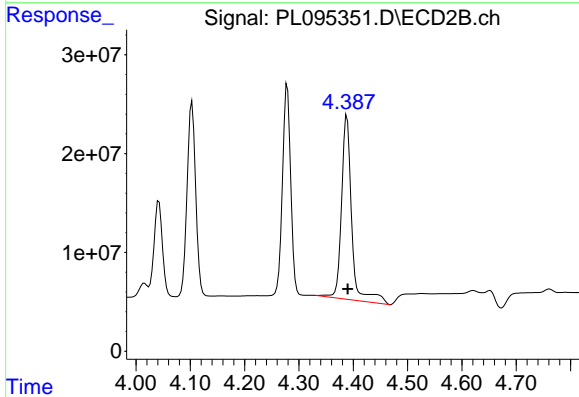


#4 Heptachlor
 R.T.: 4.103 min
 Delta R.T.: -0.001 min
 Response: 216621374
 Conc: 49.72 ng/ml

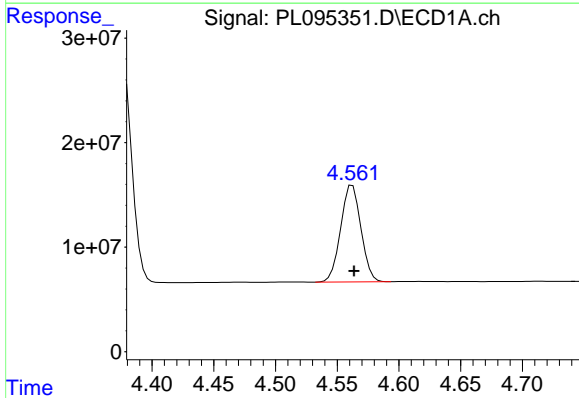


#5 Aldrin
 R.T.: 5.316 min
 Delta R.T.: -0.002 min
 Response: 234197176
 Conc: 50.99 ng/ml

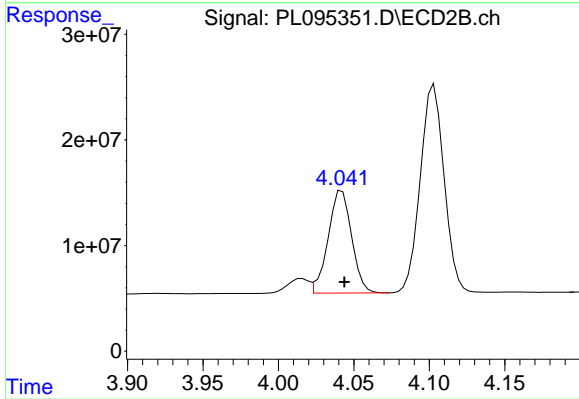
Instrument :
 ECD_L
 ClientSampleId :



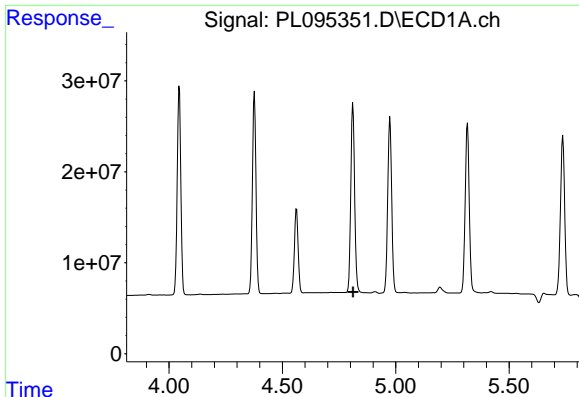
#5 Aldrin
 R.T.: 4.388 min
 Delta R.T.: -0.002 min
 Response: 243388233
 Conc: 59.14 ng/ml



#6 beta-BHC
 R.T.: 4.562 min
 Delta R.T.: -0.001 min
 Response: 105802636
 Conc: 51.17 ng/ml



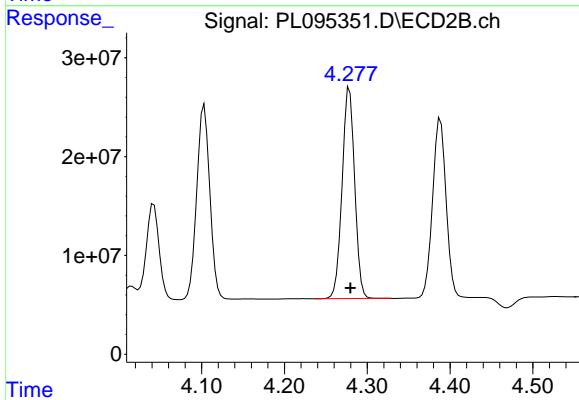
#6 beta-BHC
 R.T.: 4.042 min
 Delta R.T.: -0.002 min
 Response: 105191097
 Conc: 50.67 ng/ml



#7 delta-BHC

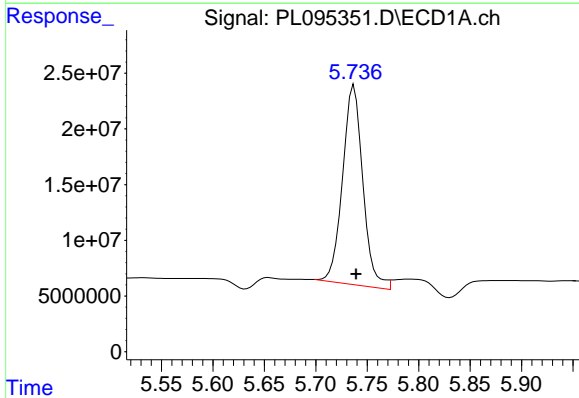
R.T.: 0.000 min
 Exp R.T.: 4.812 min
 Response: 0
 Conc: N.D.

Instrument :
 ECD_L
 ClientSampleId :



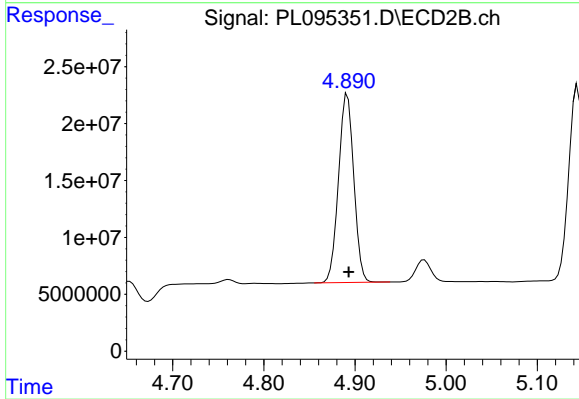
#7 delta-BHC

R.T.: 4.279 min
 Delta R.T.: -0.001 min
 Response: 225524849
 Conc: 51.47 ng/ml



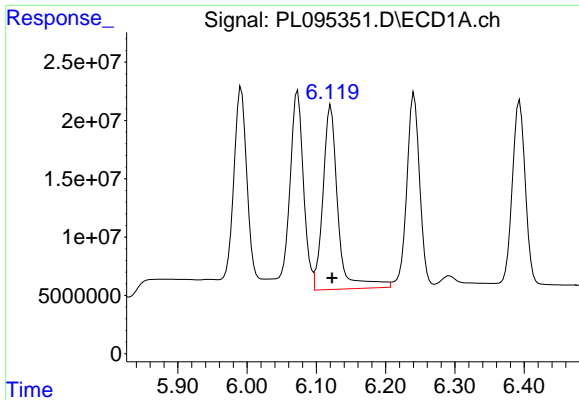
#8 Heptachlor epoxide

R.T.: 5.737 min
 Delta R.T.: -0.002 min
 Response: 246317656
 Conc: 61.50 ng/ml



#8 Heptachlor epoxide

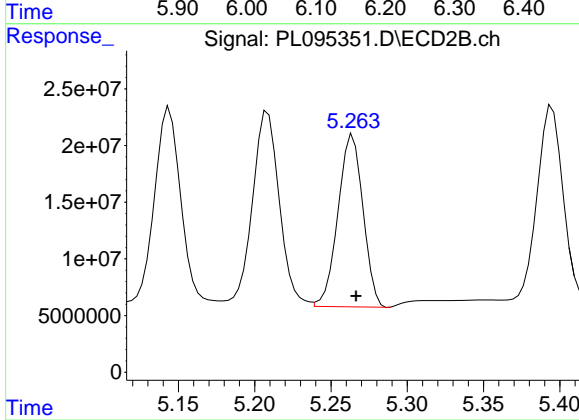
R.T.: 4.892 min
 Delta R.T.: -0.002 min
 Response: 193129620
 Conc: 50.00 ng/ml



#9 Endosulfan I

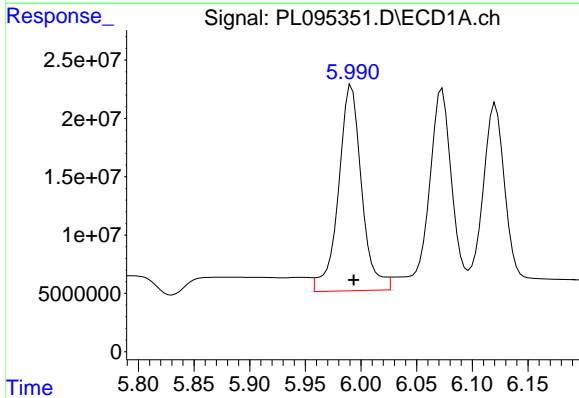
R.T.: 6.121 min
 Delta R.T.: -0.002 min
 Response: 236793791
 Conc: 62.36 ng/ml

Instrument :
 ECD_L
 ClientSampleId :



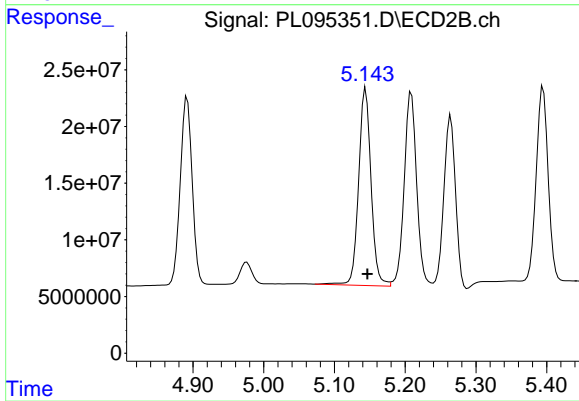
#9 Endosulfan I

R.T.: 5.264 min
 Delta R.T.: -0.002 min
 Response: 173487945
 Conc: 47.40 ng/ml



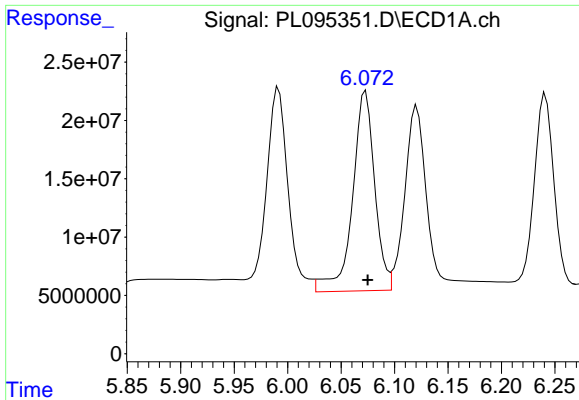
#10 gamma-Chlordane

R.T.: 5.992 min
 Delta R.T.: -0.002 min
 Response: 255054948
 Conc: 62.52 ng/ml



#10 gamma-Chlordane

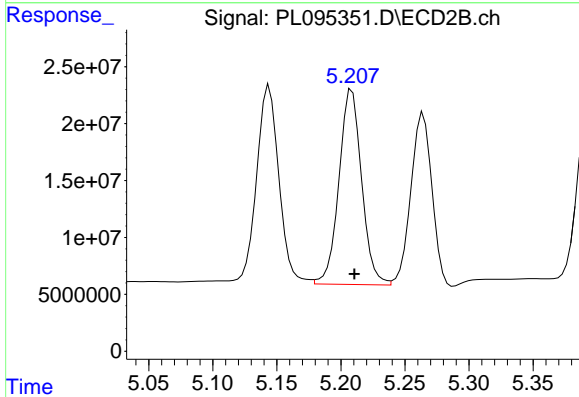
R.T.: 5.144 min
 Delta R.T.: -0.002 min
 Response: 213026793
 Conc: 52.56 ng/ml



#11 alpha-Chlordane

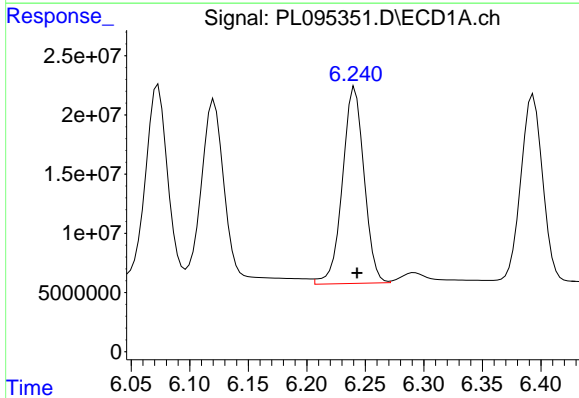
R.T.: 6.073 min
 Delta R.T.: -0.002 min
 Response: 247978156
 Conc: 60.99 ng/ml

Instrument :
 ECD_L
 ClientSampleId :



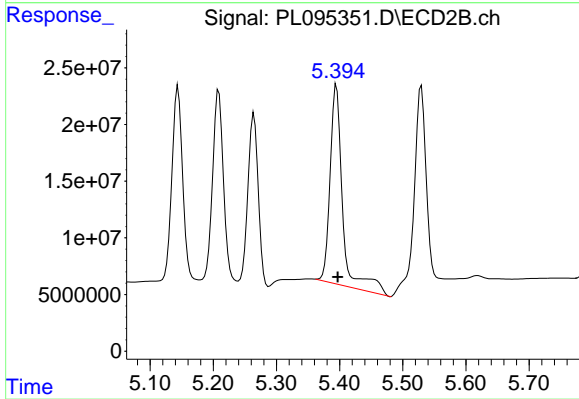
#11 alpha-Chlordane

R.T.: 5.209 min
 Delta R.T.: -0.002 min
 Response: 211307022
 Conc: 53.08 ng/ml



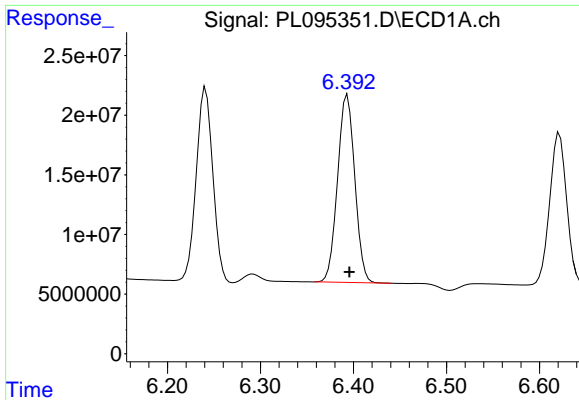
#12 4,4'-DDE

R.T.: 6.241 min
 Delta R.T.: -0.002 min
 Response: 213184151
 Conc: 54.38 ng/ml



#12 4,4'-DDE

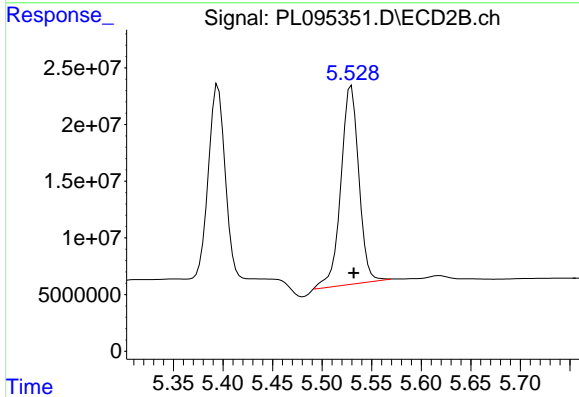
R.T.: 5.395 min
 Delta R.T.: -0.002 min
 Response: 244865292
 Conc: 60.21 ng/ml



#13 Dieldrin

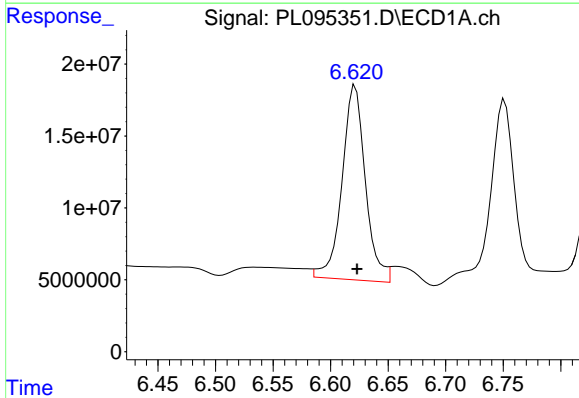
R.T.: 6.394 min
 Delta R.T.: -0.002 min
 Response: 202566008
 Conc: 52.55 ng/ml

Instrument :
 ECD_L
 ClientSampleId :



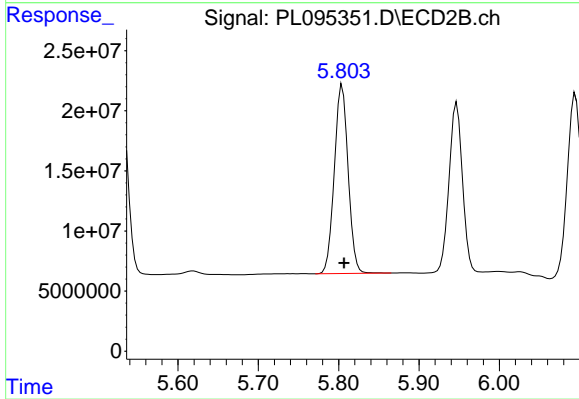
#13 Dieldrin

R.T.: 5.530 min
 Delta R.T.: -0.002 min
 Response: 221631587
 Conc: 54.49 ng/ml



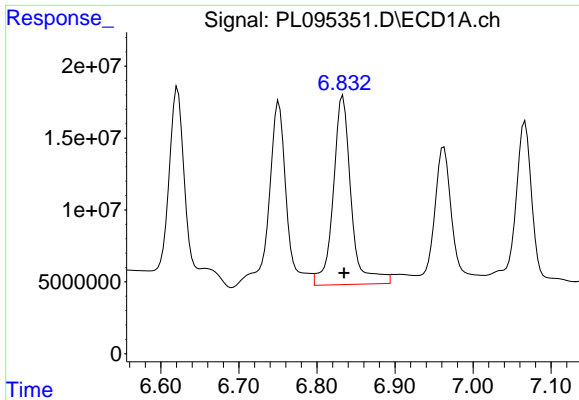
#14 Endrin

R.T.: 6.621 min
 Delta R.T.: -0.002 min
 Response: 191952872
 Conc: 60.27 ng/ml



#14 Endrin

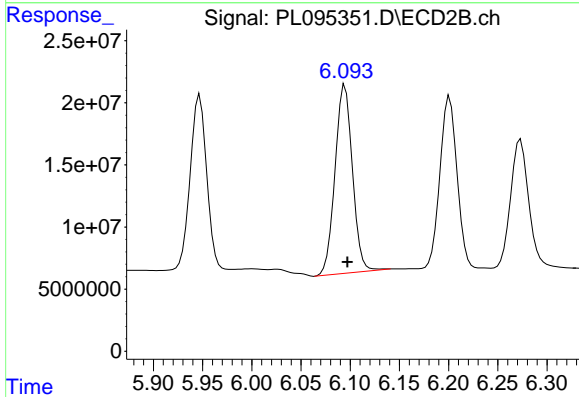
R.T.: 5.805 min
 Delta R.T.: -0.002 min
 Response: 187701093
 Conc: 51.56 ng/ml



#15 Endosulfan II

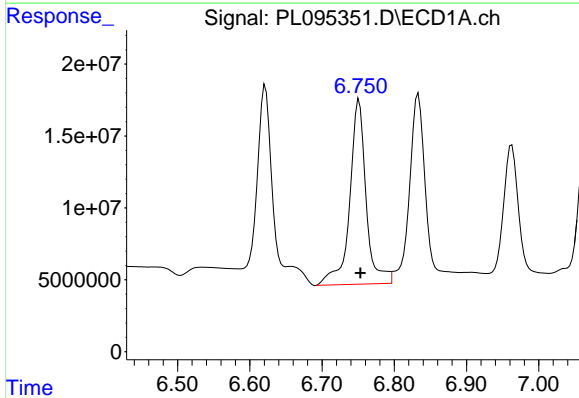
R.T.: 6.833 min
 Delta R.T.: -0.002 min
 Response: 209165764
 Conc: 65.52 ng/ml

Instrument :
 ECD_L
 ClientSampleId :



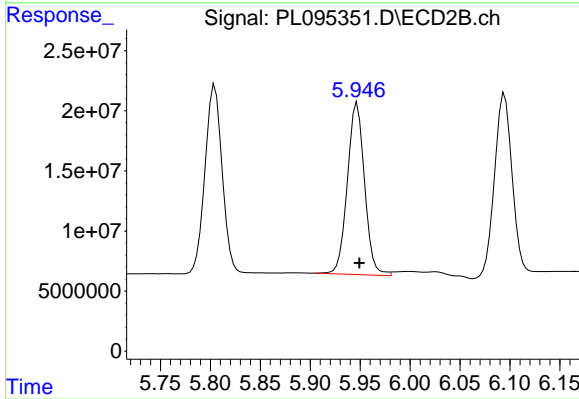
#15 Endosulfan II

R.T.: 6.095 min
 Delta R.T.: -0.003 min
 Response: 186502842
 Conc: 51.93 ng/ml



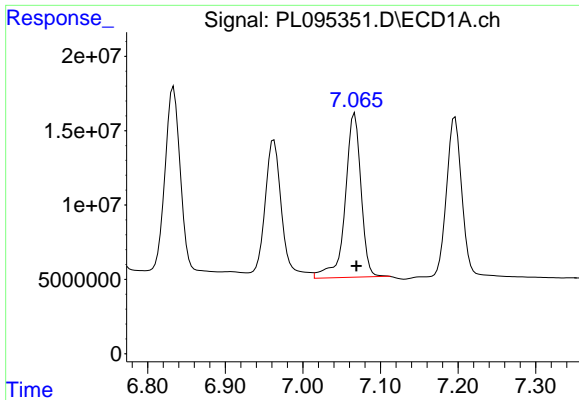
#16 4,4'-DDD

R.T.: 6.751 min
 Delta R.T.: -0.002 min
 Response: 202488696
 Conc: 71.53 ng/ml



#16 4,4'-DDD

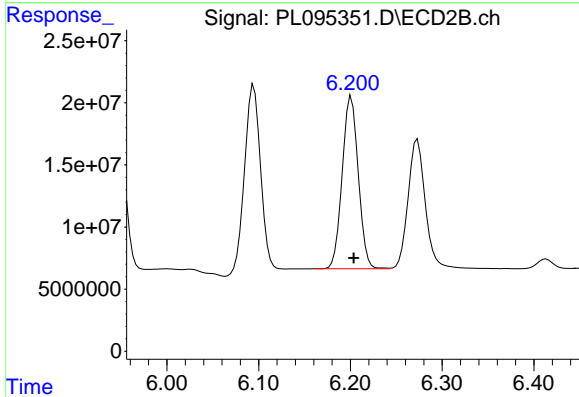
R.T.: 5.947 min
 Delta R.T.: -0.002 min
 Response: 171260046
 Conc: 52.42 ng/ml



#17 4,4'-DDT

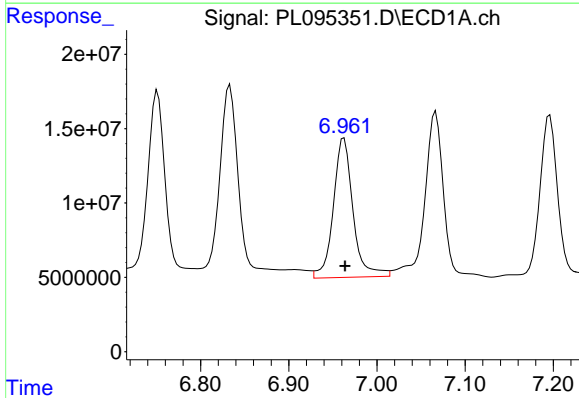
R.T.: 7.067 min
 Delta R.T.: -0.002 min
 Response: 156125686
 Conc: 54.81 ng/ml

Instrument :
 ECD_L
 ClientSampleId :



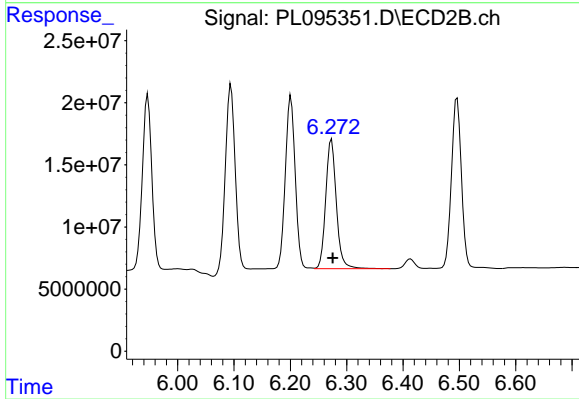
#17 4,4'-DDT

R.T.: 6.201 min
 Delta R.T.: -0.003 min
 Response: 168753305
 Conc: 49.11 ng/ml



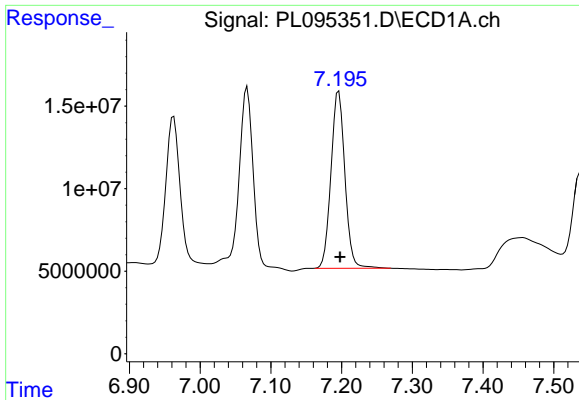
#18 Endrin aldehyde

R.T.: 6.963 min
 Delta R.T.: -0.001 min
 Response: 145437660
 Conc: 62.67 ng/ml



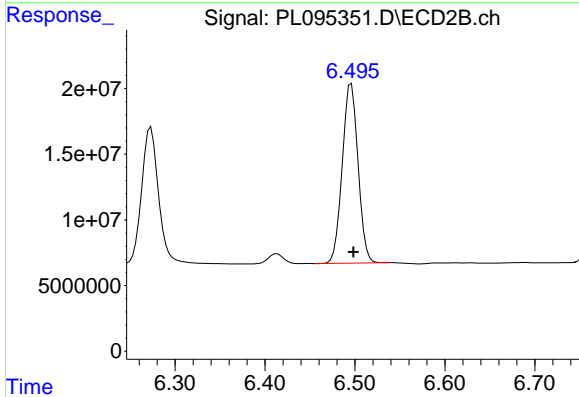
#18 Endrin aldehyde

R.T.: 6.273 min
 Delta R.T.: -0.002 min
 Response: 136482257
 Conc: 52.23 ng/ml

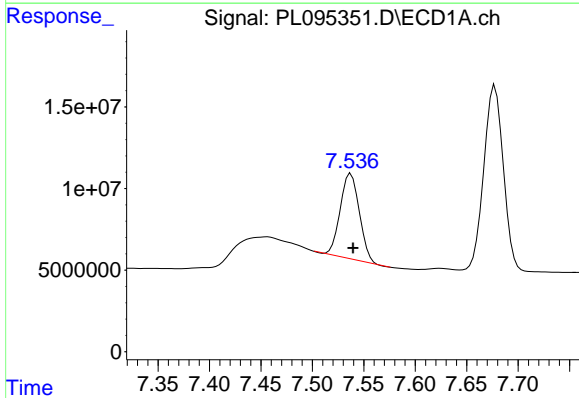


#19 Endosulfan Sulfate
 R.T.: 7.196 min
 Delta R.T.: -0.002 min
 Response: 146617970
 Conc: 52.33 ng/ml

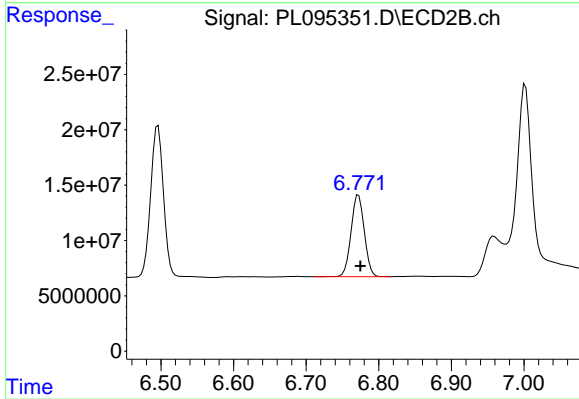
Instrument :
 ECD_L
 ClientSampleId :



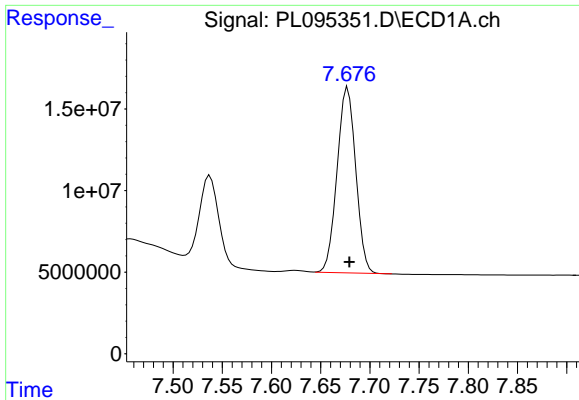
#19 Endosulfan Sulfate
 R.T.: 6.496 min
 Delta R.T.: -0.002 min
 Response: 166523744
 Conc: 50.19 ng/ml



#20 Methoxychlor
 R.T.: 7.537 min
 Delta R.T.: -0.002 min
 Response: 66036161
 Conc: 47.33 ng/ml



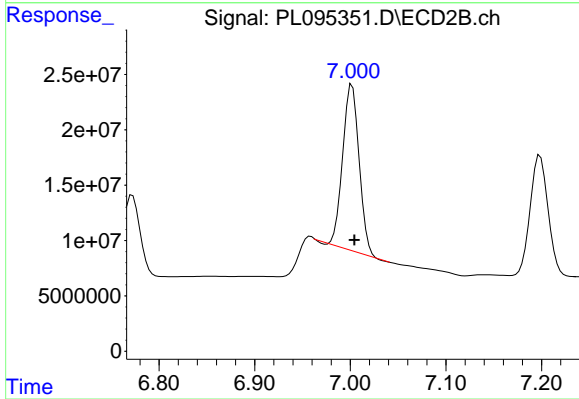
#20 Methoxychlor
 R.T.: 6.772 min
 Delta R.T.: -0.003 min
 Response: 93533042
 Conc: 49.04 ng/ml



#21 Endrin ketone

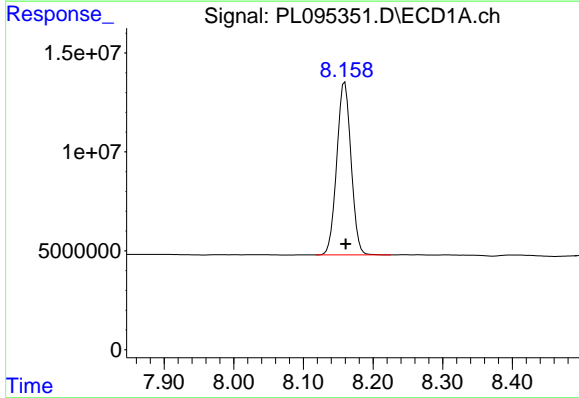
R.T.: 7.678 min
 Delta R.T.: -0.002 min
 Response: 150068157
 Conc: 52.64 ng/ml

Instrument :
 ECD_L
 ClientSampleId :



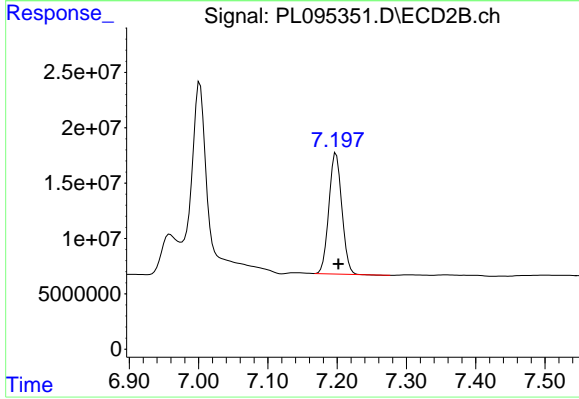
#21 Endrin ketone

R.T.: 7.002 min
 Delta R.T.: -0.003 min
 Response: 178360291
 Conc: 50.65 ng/ml



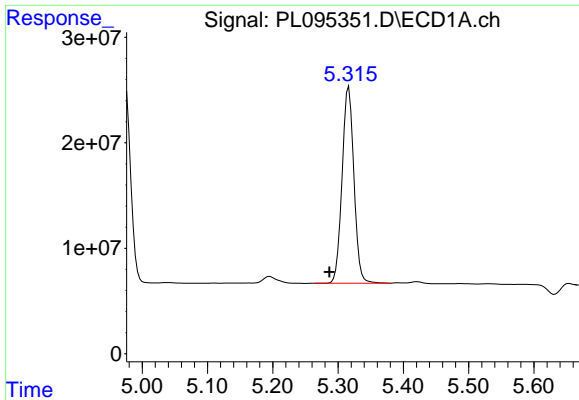
#22 Mirex

R.T.: 8.159 min
 Delta R.T.: -0.001 min
 Response: 124650515
 Conc: 52.46 ng/ml



#22 Mirex

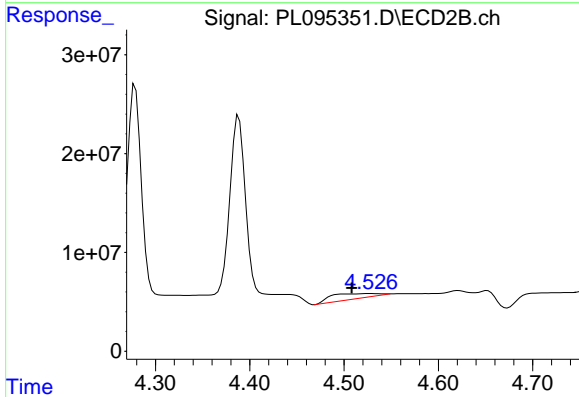
R.T.: 7.199 min
 Delta R.T.: -0.003 min
 Response: 142467055
 Conc: 49.43 ng/ml



#24 Chlordane-2

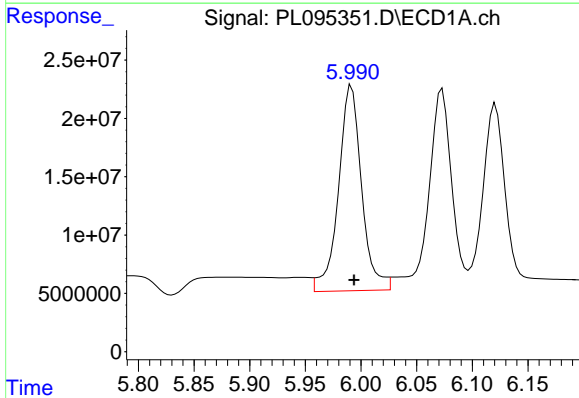
R.T.: 5.316 min
 Delta R.T.: 0.030 min
 Response: 234197176
 Conc: 1106.19 ng/ml

Instrument :
 ECD_L
 ClientSampleId :



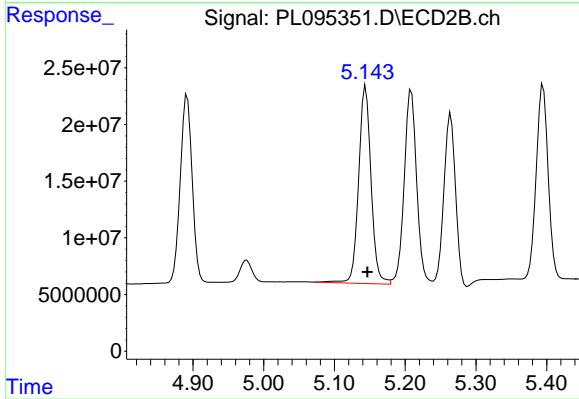
#24 Chlordane-2

R.T.: 4.528 min
 Delta R.T.: 0.020 min
 Response: 17839373
 Conc: 96.94 ng/ml



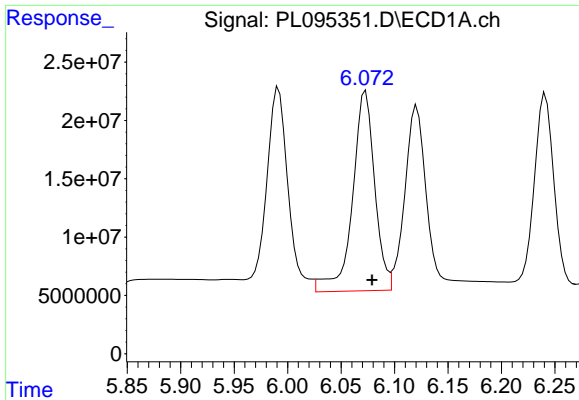
#25 Chlordane-3

R.T.: 5.992 min
 Delta R.T.: -0.002 min
 Response: 255054948
 Conc: 327.44 ng/ml



#25 Chlordane-3

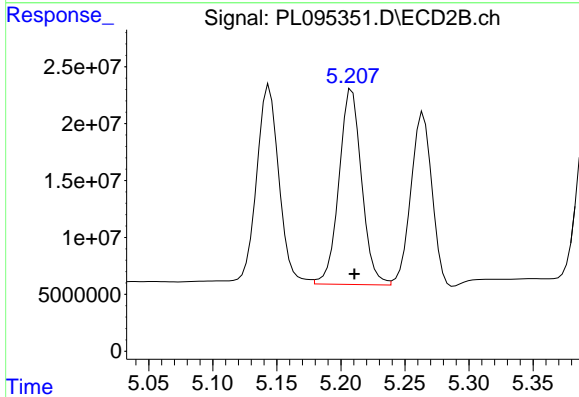
R.T.: 5.144 min
 Delta R.T.: -0.002 min
 Response: 213026793
 Conc: 412.35 ng/ml



#26 Chlordane-4

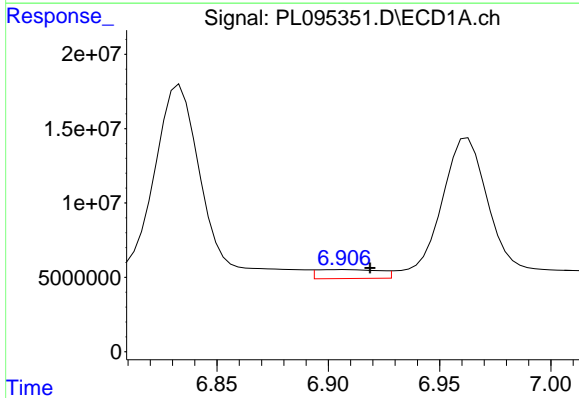
R.T.: 6.073 min
 Delta R.T.: -0.006 min
 Response: 247978156
 Conc: 262.99 ng/ml

Instrument :
 ECD_L
 ClientSampleId :



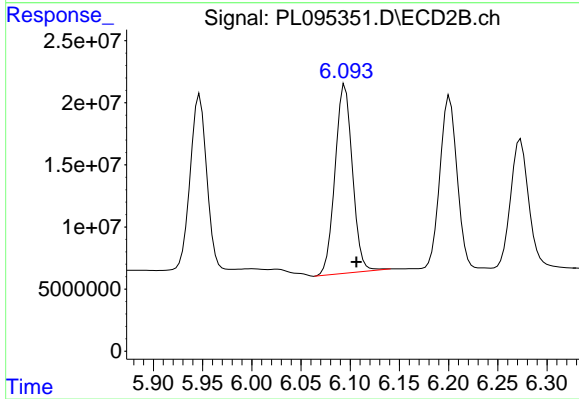
#26 Chlordane-4

R.T.: 5.209 min
 Delta R.T.: -0.002 min
 Response: 211307022
 Conc: 486.20 ng/ml



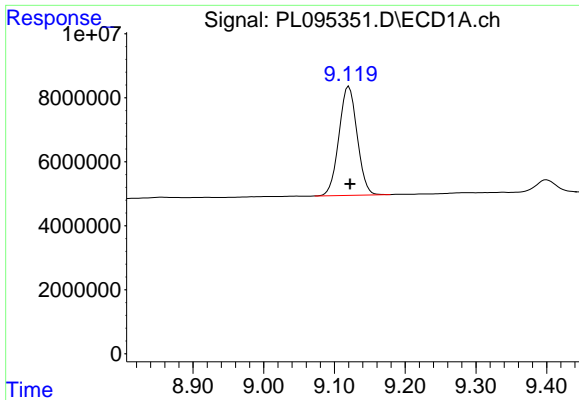
#27 Chlordane-5

R.T.: 6.907 min
 Delta R.T.: -0.012 min
 Response: 11925997
 Conc: 78.67 ng/ml



#27 Chlordane-5

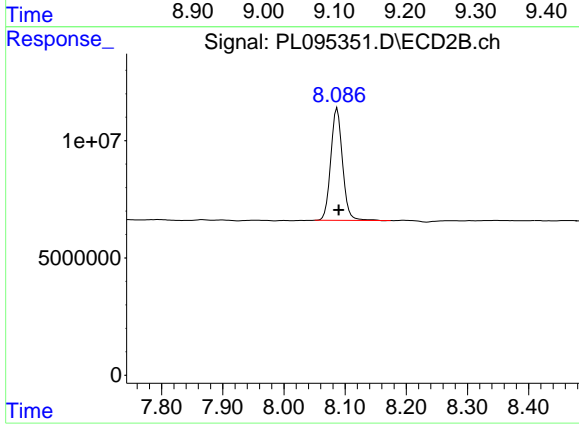
R.T.: 6.095 min
 Delta R.T.: -0.012 min
 Response: 186502842
 Conc: 1009.55 ng/ml



#28 Decachlorobiphenyl

R.T.: 9.120 min
Delta R.T.: -0.002 min
Response: 61054848
Conc: 22.04 ng/ml

Instrument :
ECD_L
ClientSampleId :



#28 Decachlorobiphenyl

R.T.: 8.087 min
Delta R.T.: -0.002 min
Response: 63750256
Conc: 21.54 ng/ml