

Data Path : Z:\pestpcbsrv\HPCHEM1\ECD_L\Data\PL042325\
 Data File : PL095357.D
 Signal(s) : Signal #1: ECD1A.ch Signal #2: ECD2B.ch
 Acq On : 23 Apr 2025 18:55
 Operator : AR\AJ
 Sample : Q1850-01
 Misc :
 ALS Vial : 30 Sample Multiplier: 1

Instrument :
 ECD_L
 ClientSampleId :
 CONCRETE-PILE-N-C-LOT

Integration File signal 1: autoint1.e
 Integration File signal 2: autoint2.e
 Quant Time: Apr 24 01:28:03 2025
 Quant Method : Z:\pestpcbsrv\HPCHEM1\ECD_L\methods\PL042325.M
 Quant Title : GC Extractables
 QLast Update : Wed Apr 23 16:23:18 2025
 Response via : Initial Calibration
 Integrator: ChemStation

Volume Inj. : 1 µl
 Signal #1 Phase : ZB-MR1 Signal #2 Phase: ZB-MR2
 Signal #1 Info : 30M x 0.32mm x0.5 Signal #2 Info : 30M x 0.32mm x0.25µm

Compound	RT#1	RT#2	Resp#1	Resp#2	ng/ml	ng/ml

System Monitoring Compounds						
1) SA Tetrachlo...	3.593	2.906	30665977	24730102	9.393	7.777
28) SA Decachlor...	9.121	8.087	21035497	29408816	7.592	9.938 #
Target Compounds						
2) A alpha-BHC	4.053	3.435f	10491183	27832219	2.118	6.256 #
4) MA Heptachlor	4.996f	4.112	10482268	9720168	2.291	2.231
5) MB Aldrin	5.300f	4.367f	19259645	21734635	4.193	5.281 #
6) B beta-BHC	0.000	4.029	0	20172785	N.D.	9.718 #
7) B delta-BHC	0.000	4.260f	0	8711008	N.D.	1.988 #
10) B gamma-Chl...	0.000	5.125f	0	3804735	N.D.	0.939 #
16) A 4,4'-DDD	0.000	5.932f	0	10844217	N.D.	3.320 #
21) B Endrin ke...	7.669	0.000	186.8E6	0	65.525	N.D. #
22) Mirex	8.169	0.000	108.5E6	0	45.671	N.D. #
23) Chlordane-1	4.753	3.928	15727656	20955358	80.446	135.513 #
24) Chlordane-2	5.300	4.500	19259645	8400764	90.969	45.649 #
25) Chlordane-3	0.000	5.125f	0	3804735	N.D.	7.365 #

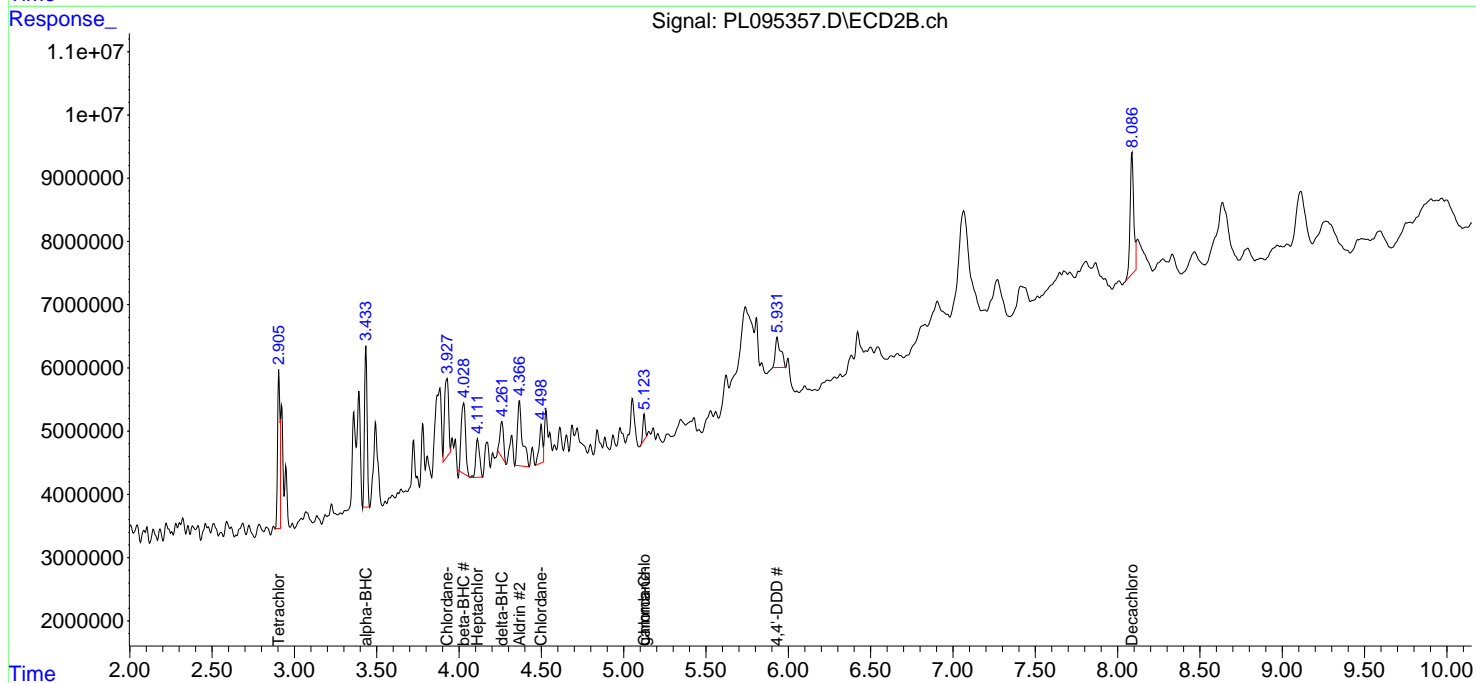
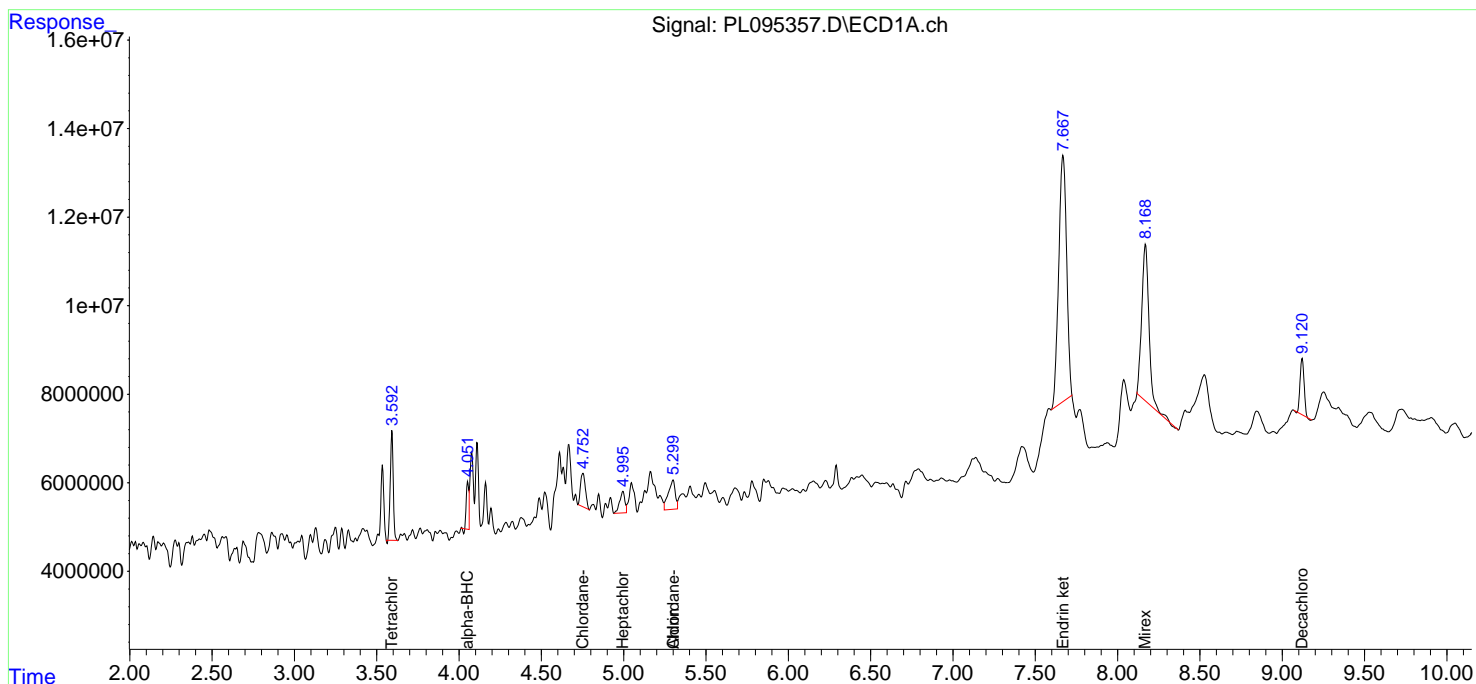
(f)=RT Delta > 1/2 Window (#)=Amounts differ by > 25% (m)=manual int.

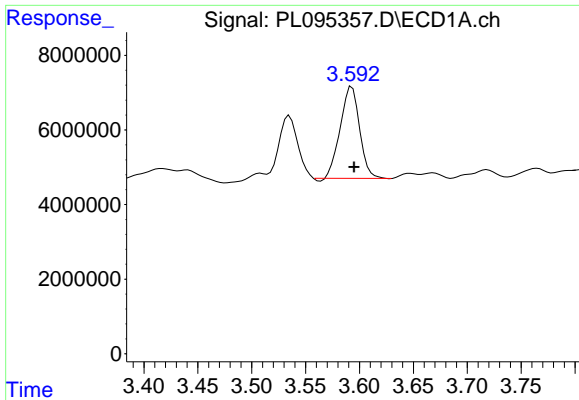
Data Path : Z:\pestpcbsrv\HPCHEM1\ECD_L\Data\PL042325\
 Data File : PL095357.D
 Signal(s) : Signal #1: ECD1A.ch Signal #2: ECD2B.ch
 Acq On : 23 Apr 2025 18:55
 Operator : AR\AJ
 Sample : Q1850-01
 Misc :
 ALS Vial : 30 Sample Multiplier: 1

Instrument :
 ECD_L
 ClientSampleId :
 CONCRETE-PILE-N-C-LOT

Integration File signal 1: autoint1.e
 Integration File signal 2: autoint2.e
 Quant Time: Apr 24 01:28:03 2025
 Quant Method : Z:\pestpcbsrv\HPCHEM1\ECD_L\methods\PL042325.M
 Quant Title : GC Extractables
 QLast Update : Wed Apr 23 16:23:18 2025
 Response via : Initial Calibration
 Integrator: ChemStation

Volume Inj. : 1 µl
 Signal #1 Phase : ZB-MR1 Signal #2 Phase: ZB-MR2
 Signal #1 Info : 30M x 0.32mm x0.5 Signal #2 Info : 30M x 0.32mm x0.25µm

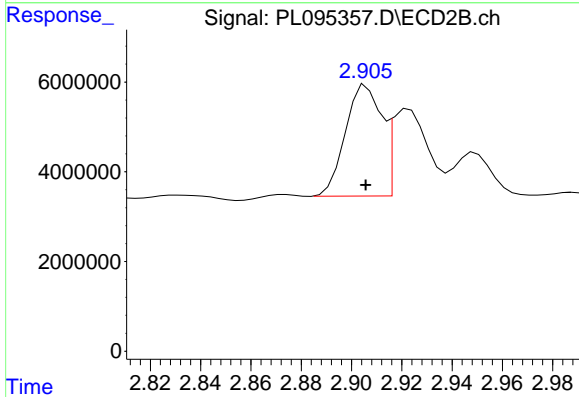




#1 Tetrachloro-m-xylene

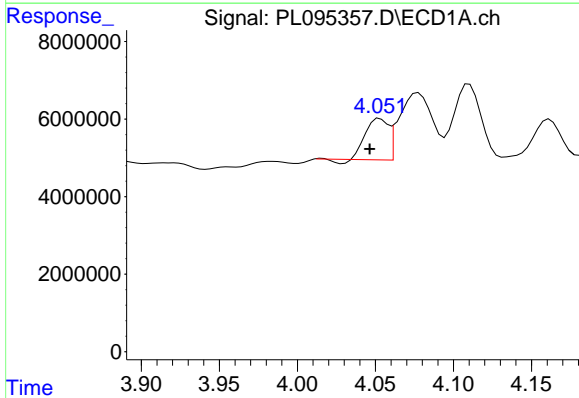
R.T.: 3.593 min
 Delta R.T.: -0.002 min
 Response: 30665977
 Conc: 9.39 ng/ml

Instrument :
 ECD_L
 ClientSampleId :
 CONCRETE-PILE-N-C-LOT



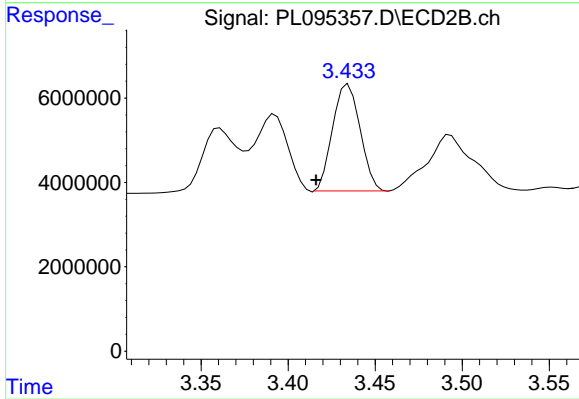
#1 Tetrachloro-m-xylene

R.T.: 2.906 min
 Delta R.T.: 0.000 min
 Response: 24730102
 Conc: 7.78 ng/ml



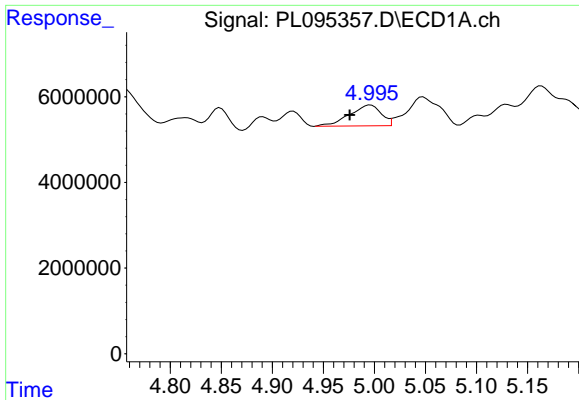
#2 alpha-BHC

R.T.: 4.053 min
 Delta R.T.: 0.007 min
 Response: 10491183
 Conc: 2.12 ng/ml



#2 alpha-BHC

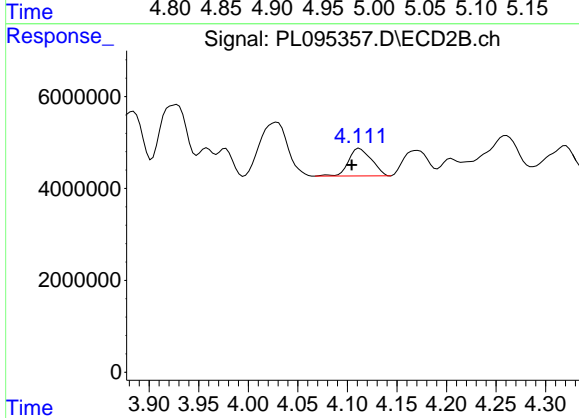
R.T.: 3.435 min
 Delta R.T.: 0.019 min
 Response: 27832219
 Conc: 6.26 ng/ml



#4 Heptachlor

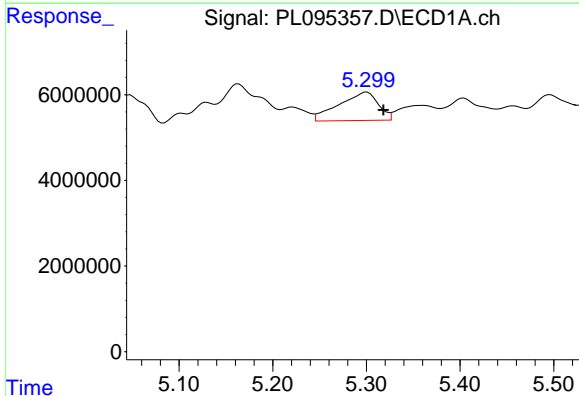
R.T.: 4.996 min
 Delta R.T.: 0.020 min
 Response: 10482268
 Conc: 2.29 ng/ml

Instrument :
 ECD_L
 ClientSampleId :
 CONCRETE-PILE-N-C-LOT



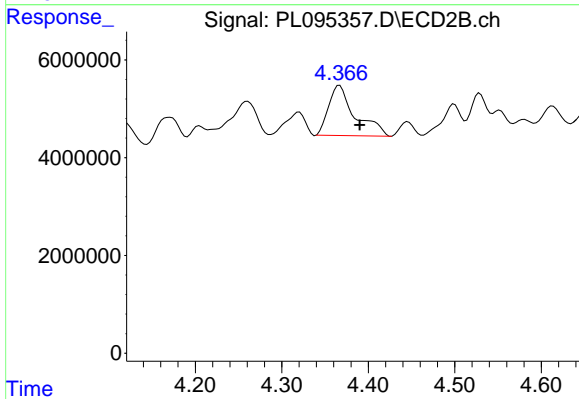
#4 Heptachlor

R.T.: 4.112 min
 Delta R.T.: 0.008 min
 Response: 9720168
 Conc: 2.23 ng/ml



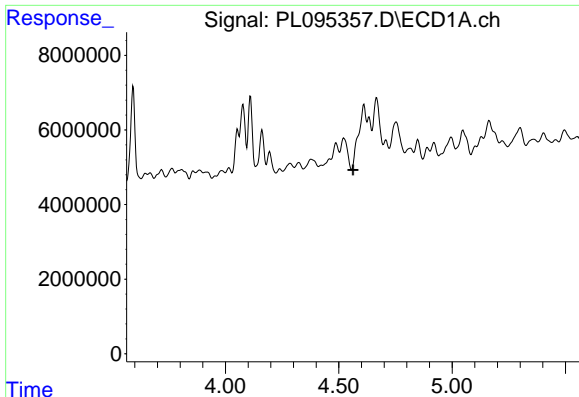
#5 Aldrin

R.T.: 5.300 min
 Delta R.T.: -0.018 min
 Response: 19259645
 Conc: 4.19 ng/ml



#5 Aldrin

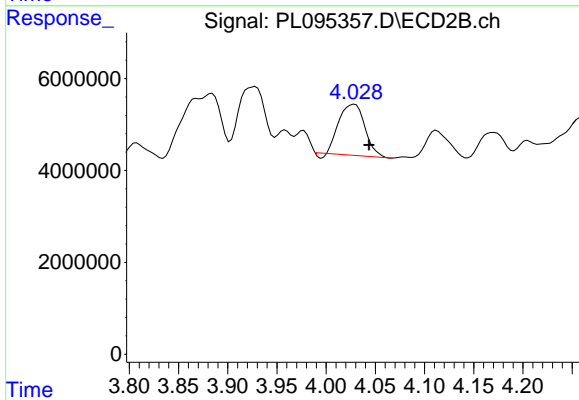
R.T.: 4.367 min
 Delta R.T.: -0.023 min
 Response: 21734635
 Conc: 5.28 ng/ml



#6 beta-BHC

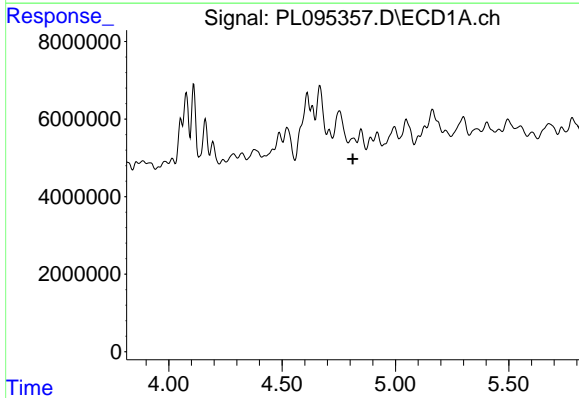
R.T.: 0.000 min
 Exp R.T.: 4.564 min
 Response: 0
 Conc: N.D.

Instrument :
 ECD_L
 ClientSampleId :
 CONCRETE-PILE-N-C-LOT



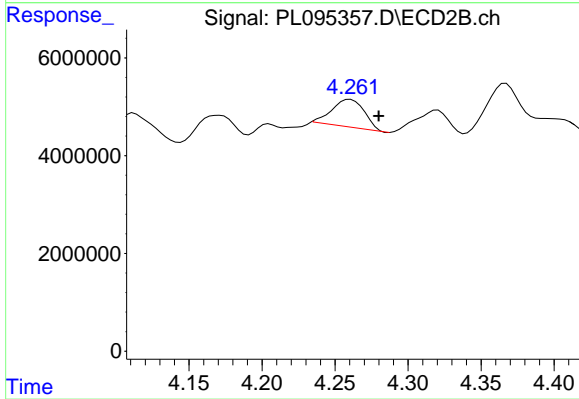
#6 beta-BHC

R.T.: 4.029 min
 Delta R.T.: -0.015 min
 Response: 20172785
 Conc: 9.72 ng/ml



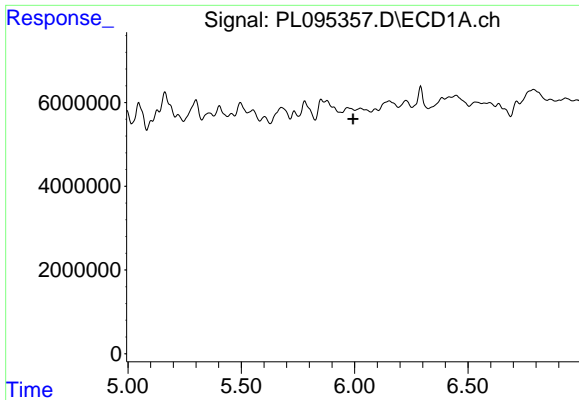
#7 delta-BHC

R.T.: 0.000 min
 Exp R.T.: 4.812 min
 Response: 0
 Conc: N.D.



#7 delta-BHC

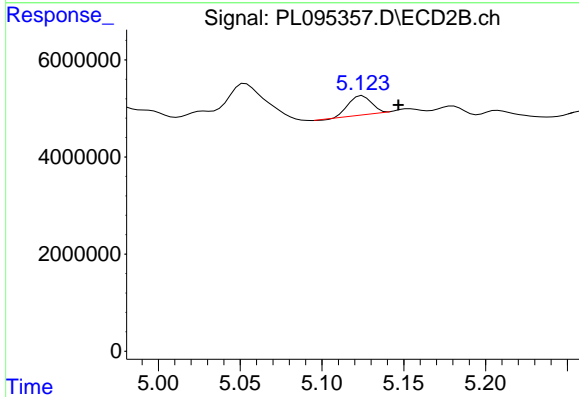
R.T.: 4.260 min
 Delta R.T.: -0.019 min
 Response: 8711008
 Conc: 1.99 ng/ml



#10 gamma-Chlordane

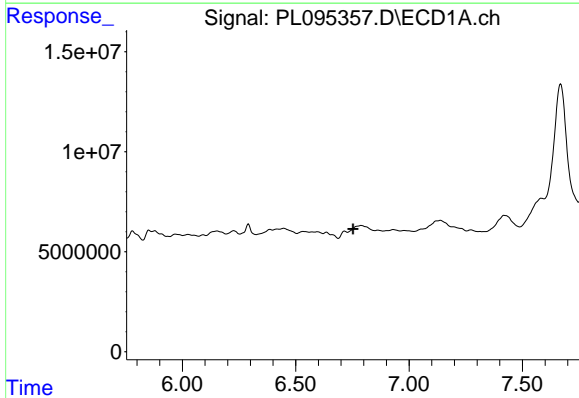
R.T.: 0.000 min
 Exp R.T.: 5.994 min
 Response: 0
 Conc: N.D.

Instrument :
 ECD_L
 ClientSampleId :
 CONCRETE-PILE-N-C-LOT



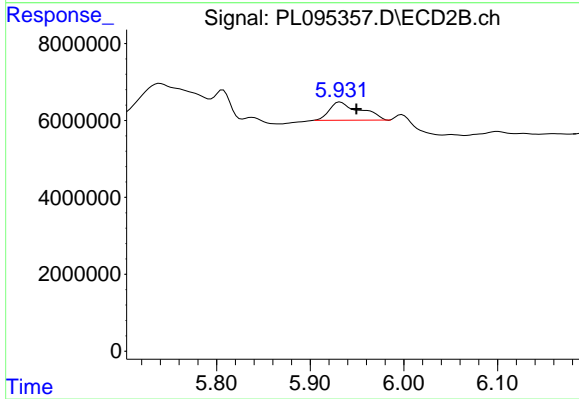
#10 gamma-Chlordane

R.T.: 5.125 min
 Delta R.T.: -0.022 min
 Response: 3804735
 Conc: 0.94 ng/ml



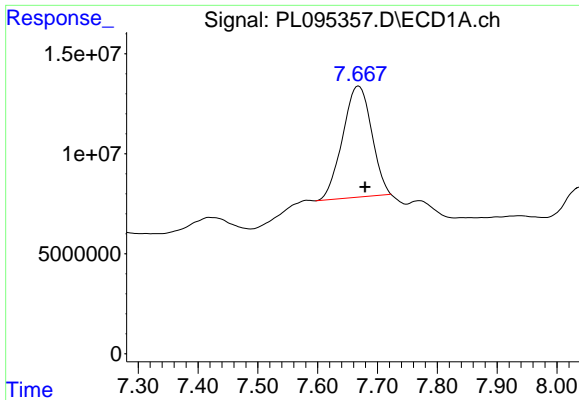
#16 4,4'-DDD

R.T.: 0.000 min
 Exp R.T.: 6.753 min
 Response: 0
 Conc: N.D.



#16 4,4'-DDD

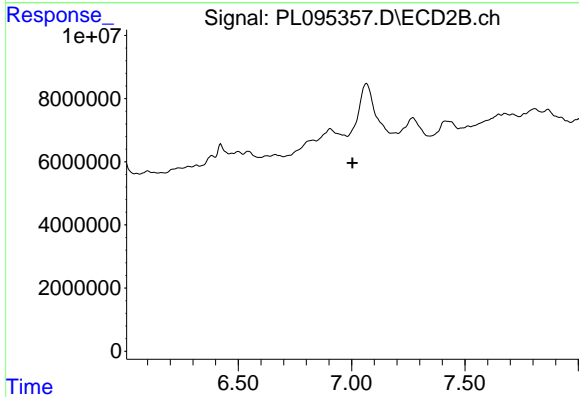
R.T.: 5.932 min
 Delta R.T.: -0.017 min
 Response: 10844217
 Conc: 3.32 ng/ml



#21 Endrin ketone

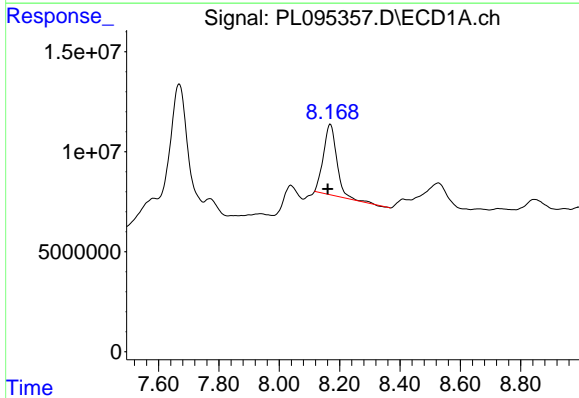
R.T.: 7.669 min
 Delta R.T.: -0.011 min
 Response: 186804383
 Conc: 65.53 ng/ml

Instrument :
 ECD_L
 ClientSampleId :
 CONCRETE-PILE-N-C-LOT



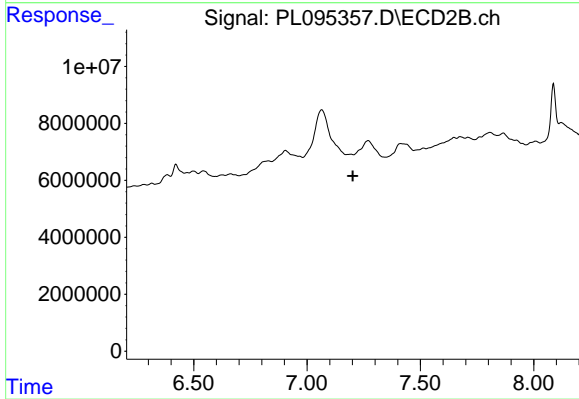
#21 Endrin ketone

R.T.: 0.000 min
 Exp R.T. : 7.004 min
 Response: 0
 Conc: N.D.



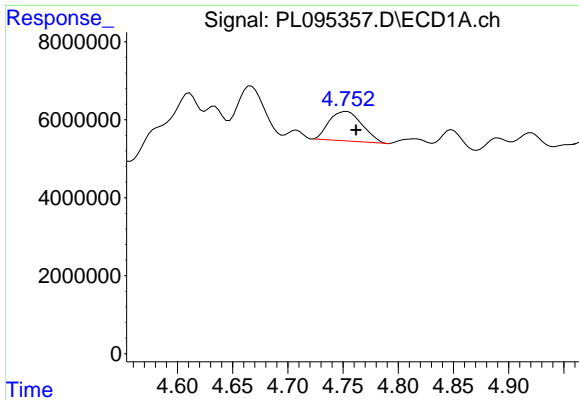
#22 Mirex

R.T.: 8.169 min
 Delta R.T.: 0.008 min
 Response: 108515712
 Conc: 45.67 ng/ml



#22 Mirex

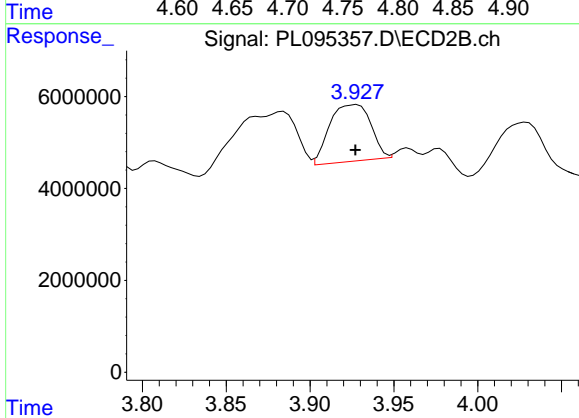
R.T.: 0.000 min
 Exp R.T. : 7.202 min
 Response: 0
 Conc: N.D.



#23 Chlordane-1

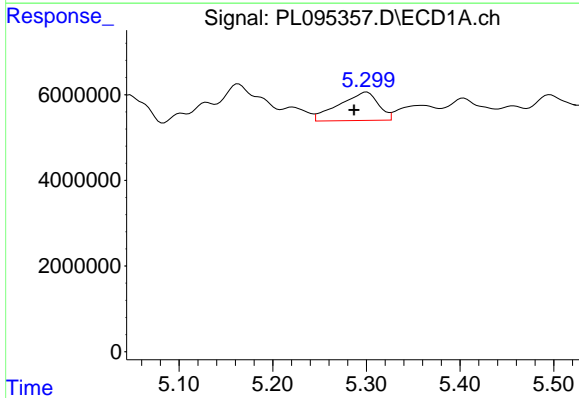
R.T.: 4.753 min
 Delta R.T.: -0.008 min
 Response: 15727656
 Conc: 80.45 ng/ml

Instrument :
 ECD_L
 ClientSampleId :
 CONCRETE-PILE-N-C-LOT



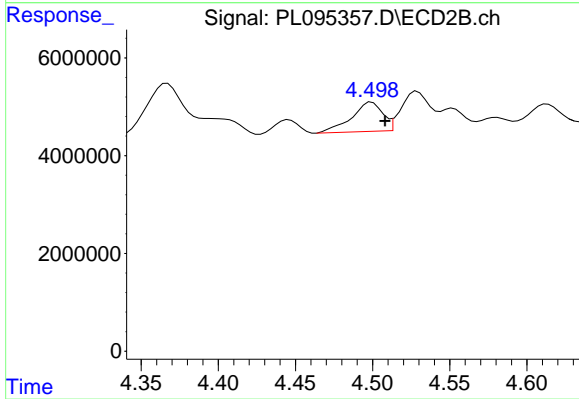
#23 Chlordane-1

R.T.: 3.928 min
 Delta R.T.: 0.000 min
 Response: 20955358
 Conc: 135.51 ng/ml



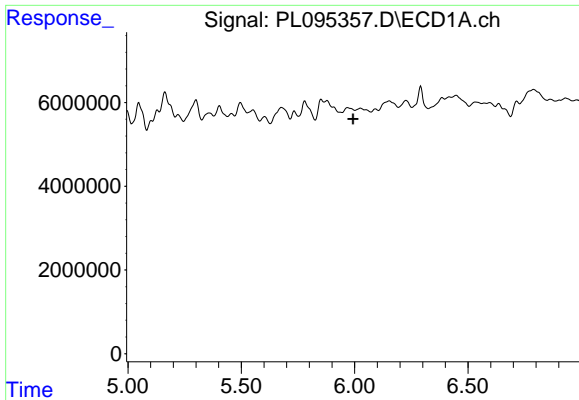
#24 Chlordane-2

R.T.: 5.300 min
 Delta R.T.: 0.014 min
 Response: 19259645
 Conc: 90.97 ng/ml



#24 Chlordane-2

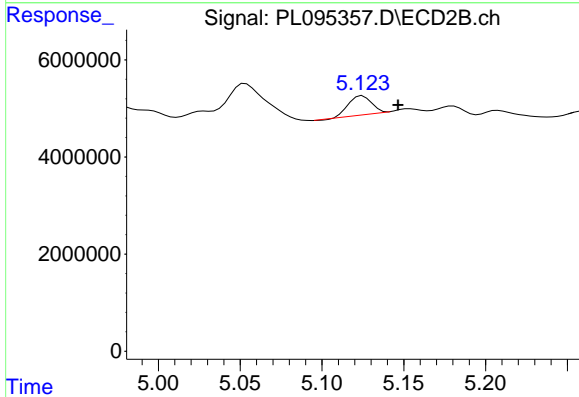
R.T.: 4.500 min
 Delta R.T.: -0.009 min
 Response: 8400764
 Conc: 45.65 ng/ml



#25 Chlordane-3

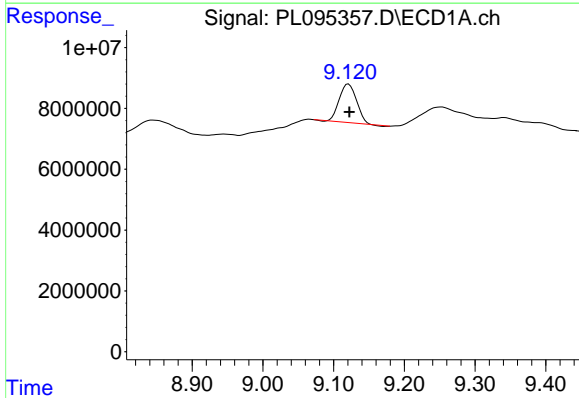
R.T.: 0.000 min
 Exp R.T.: 5.994 min
 Response: 0
 Conc: N.D.

Instrument :
 ECD_L
 ClientSampleId :
 CONCRETE-PILE-N-C-LOT



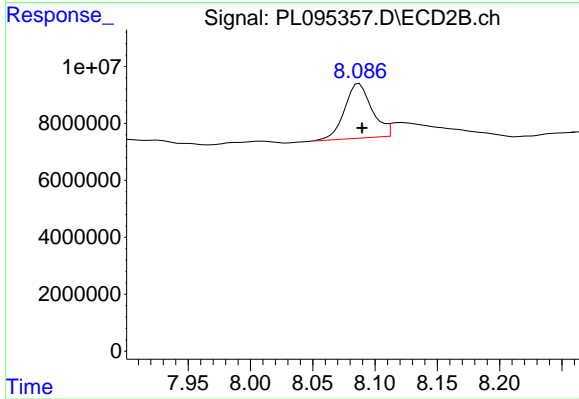
#25 Chlordane-3

R.T.: 5.125 min
 Delta R.T.: -0.022 min
 Response: 3804735
 Conc: 7.36 ng/ml



#28 Decachlorobiphenyl

R.T.: 9.121 min
 Delta R.T.: -0.001 min
 Response: 21035497
 Conc: 7.59 ng/ml



#28 Decachlorobiphenyl

R.T.: 8.087 min
 Delta R.T.: -0.002 min
 Response: 29408816
 Conc: 9.94 ng/ml