

Data Path : Z:\pestpcbsrv\HPCHEM1\ECD_L\Data\PL042325\
 Data File : PL095359.D
 Signal(s) : Signal #1: ECD1A.ch Signal #2: ECD2B.ch
 Acq On : 23 Apr 2025 19:36
 Operator : AR\AJ
 Sample : PSTDCCC050
 Misc :
 ALS Vial : 4 Sample Multiplier: 1

Instrument :
 ECD_L
 ClientSampleId :

Integration File signal 1: autoint1.e
 Integration File signal 2: autoint2.e
 Quant Time: Apr 24 01:28:23 2025
 Quant Method : Z:\pestpcbsrv\HPCHEM1\ECD_L\methods\PL042325.M
 Quant Title : GC Extractables
 QLast Update : Wed Apr 23 16:23:18 2025
 Response via : Initial Calibration
 Integrator: ChemStation

Volume Inj. : 1 µl
 Signal #1 Phase : ZB-MR2 Signal #2 Phase: ZB-MR2
 Signal #1 Info : 30M x 0.32mm x0.5 Signal #2 Info : 30M x 0.32mm x0.25µm

	Compound	RT#1	RT#2	Resp#1	Resp#2	ng/ml	ng/ml

System Monitoring Compounds							
1)	SA Tetrachlo...	3.594	2.906	171.8E6	163.1E6	52.635	51.296
28)	SA Decachlor...	9.120	8.087	110.4E6	117.7E6	39.858	39.788
Target Compounds							
2)	A alpha-BHC	4.045	3.416	257.6E6	233.2E6	52.007	52.425
3)	MA gamma-BHC...	4.377	3.749	243.6E6	227.1E6	51.459	51.634
4)	MA Heptachlor	4.975	4.103	221.5E6	215.6E6	48.427	49.492
5)	MB Aldrin	5.317	4.389	225.7E6	205.6E6	49.138	49.945
6)	B beta-BHC	4.563	4.043	104.4E6	103.9E6	50.488	50.036
7)	B delta-BHC	0.000	4.279	0	222.9E6	N.D.	50.859 #
8)	Heptachlo...	5.737	4.891	206.1E6	186.8E6	51.456	48.365
9)	A Endosulfan I	6.121	5.265	184.8E6	171.9E6	48.657	46.955
10)	B gamma-Chl...	5.992	5.144	209.4E6	191.9E6	51.328	47.341
11)	B alpha-Chl...	6.073	5.209	198.5E6	188.3E6	48.821	47.293
12)	B 4,4'-DDE	6.242	5.395	186.8E6	205.3E6	47.654	50.484
13)	MA Dieldrin	6.394	5.530	174.0E6	192.9E6	45.139	47.437
14)	MA Endrin	6.621	5.804	146.7E6	159.2E6	46.049	43.738
15)	B Endosulfa...	6.833	6.095	156.0E6	158.8E6	48.883	44.227
16)	A 4,4'-DDD	6.751	5.947	140.7E6	147.7E6	49.703	45.207
17)	MA 4,4'-DDT	7.067	6.202	115.4E6	137.7E6	40.514	40.073
18)	B Endrin al...	6.963	6.273	99878061	106.4E6	43.036	40.717
19)	B Endosulfa...	7.196	6.496	121.6E6	138.1E6	43.400	41.612
20)	A Methoxychlor	7.538	6.772	55115448	72092428	39.506	37.796
21)	B Endrin ke...	7.678	7.002	121.4E6	149.2E6	42.597	42.371
22)	Mirex	8.159	7.199	102.5E6	118.1E6	43.132	40.969
24)	Chlordane-2	5.317f	0.000	225.7E6	0	1066.006	N.D. #
25)	Chlordane-3	5.992	5.144	209.4E6	191.9E6	268.811	371.371 #
26)	Chlordane-4	6.073	5.209	198.5E6	188.3E6	210.524	433.208 #
27)	Chlordane-5	0.000	6.095	0	158.8E6	N.D.	859.711 #

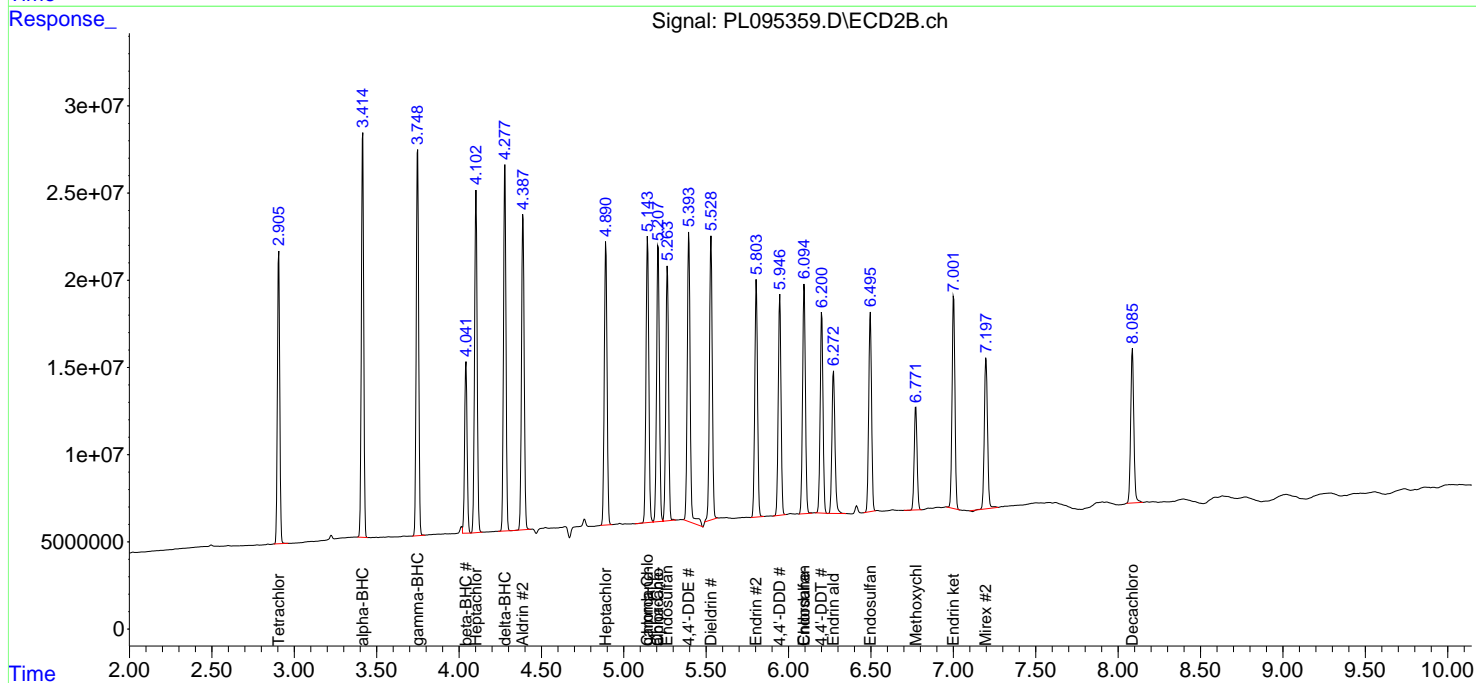
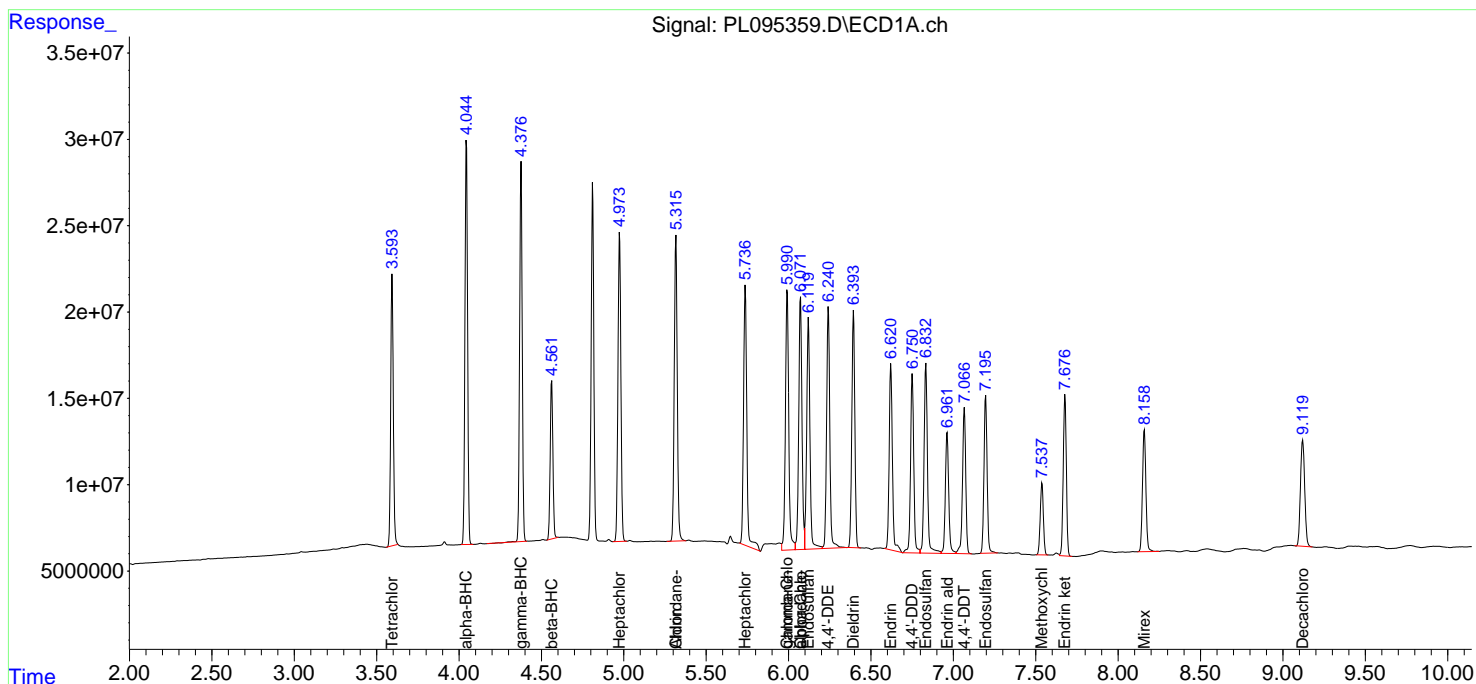
(f)=RT Delta > 1/2 Window (#)=Amounts differ by > 25% (m)=manual int.

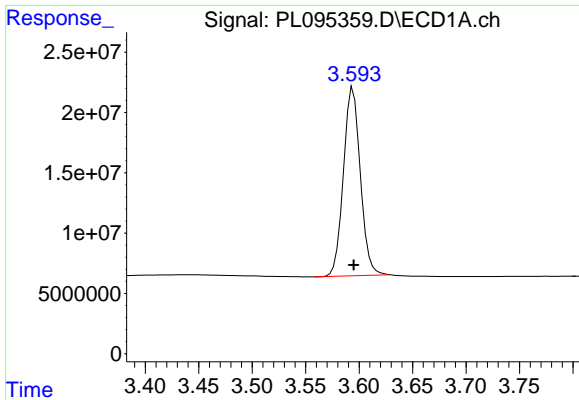
Data Path : Z:\pestpcbsrv\HPCHEM1\ECD_L\Data\PL042325\
 Data File : PL095359.D
 Signal(s) : Signal #1: ECD1A.ch Signal #2: ECD2B.ch
 Acq On : 23 Apr 2025 19:36
 Operator : AR\AJ
 Sample : PSTDCCC050
 Misc :
 ALS Vial : 4 Sample Multiplier: 1

Instrument :
 ECD_L
 ClientSampleId :

Integration File signal 1: autoint1.e
 Integration File signal 2: autoint2.e
 Quant Time: Apr 24 01:28:23 2025
 Quant Method : Z:\pestpcbsrv\HPCHEM1\ECD_L\methods\PL042325.M
 Quant Title : GC Extractables
 QLast Update : Wed Apr 23 16:23:18 2025
 Response via : Initial Calibration
 Integrator: ChemStation

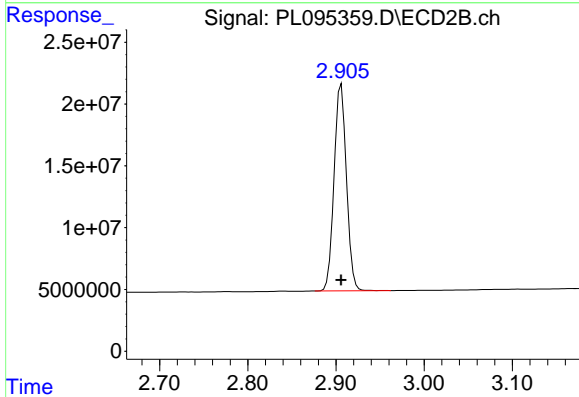
Volume Inj. : 1 µl
 Signal #1 Phase : ZB-MR1 Signal #2 Phase: ZB-MR2
 Signal #1 Info : 30M x 0.32mm x0.5 Signal #2 Info : 30M x 0.32mm x0.25µm



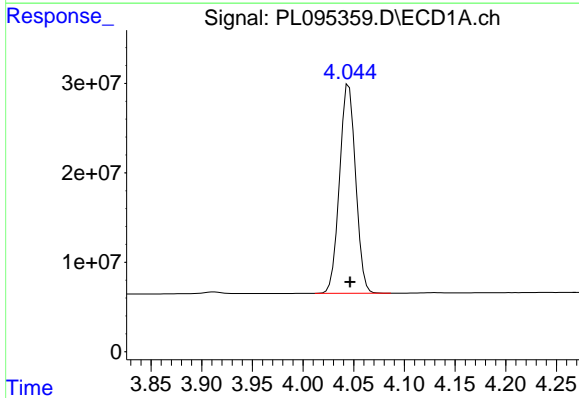


#1 Tetrachloro-m-xylene
R.T.: 3.594 min
Delta R.T.: 0.000 min
Response: 171836727
Conc: 52.64 ng/ml

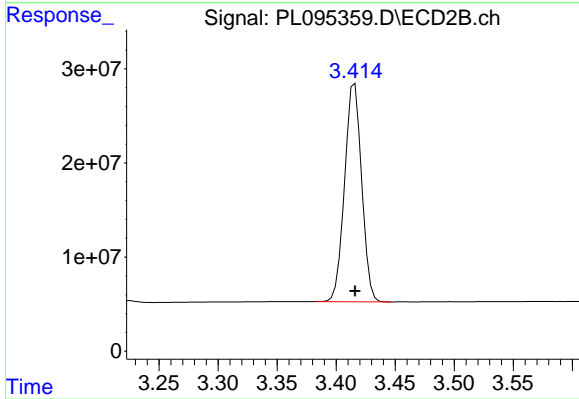
Instrument :
ECD_L
ClientSampleId :



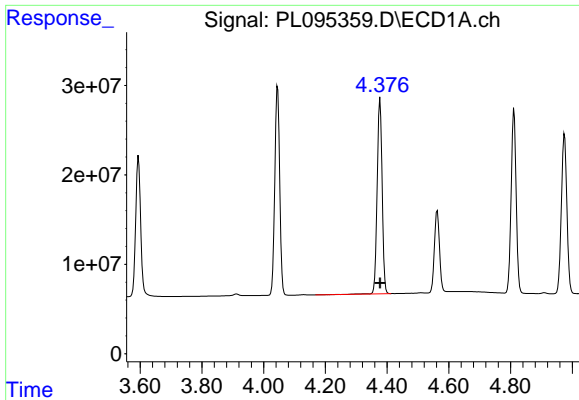
#1 Tetrachloro-m-xylene
R.T.: 2.906 min
Delta R.T.: 0.000 min
Response: 163109525
Conc: 51.30 ng/ml



#2 alpha-BHC
R.T.: 4.045 min
Delta R.T.: 0.000 min
Response: 257627575
Conc: 52.01 ng/ml



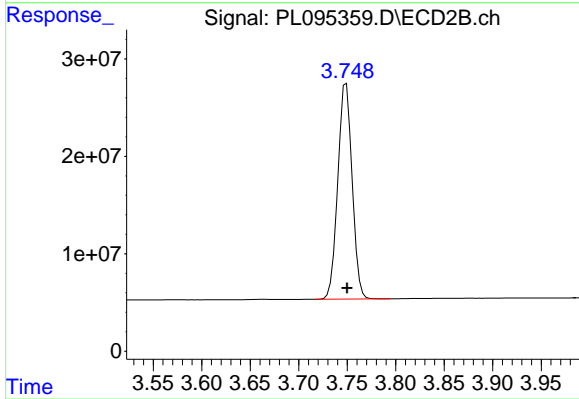
#2 alpha-BHC
R.T.: 3.416 min
Delta R.T.: 0.000 min
Response: 233222497
Conc: 52.42 ng/ml



#3 gamma-BHC (Lindane)

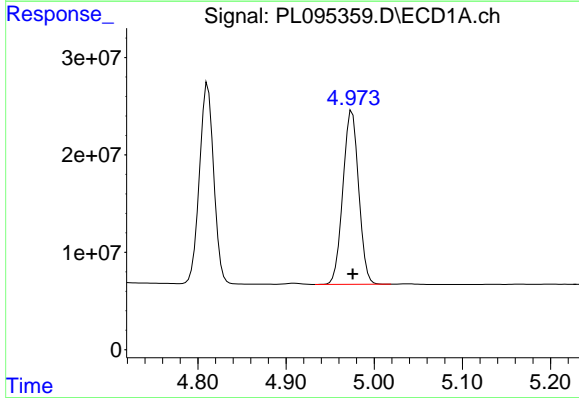
R.T.: 4.377 min
 Delta R.T.: 0.000 min
 Response: 243604979
 Conc: 51.46 ng/ml

Instrument :
 ECD_L
 ClientSampleId :



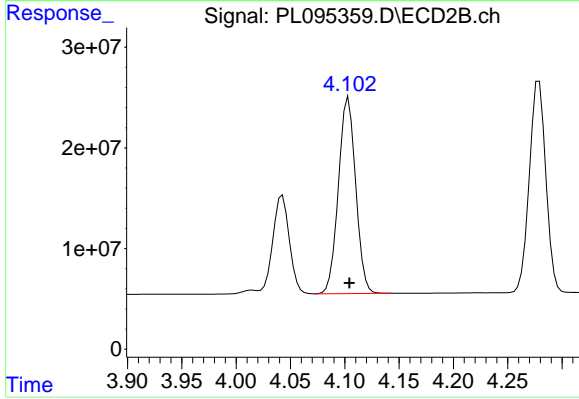
#3 gamma-BHC (Lindane)

R.T.: 3.749 min
 Delta R.T.: 0.000 min
 Response: 227096043
 Conc: 51.63 ng/ml



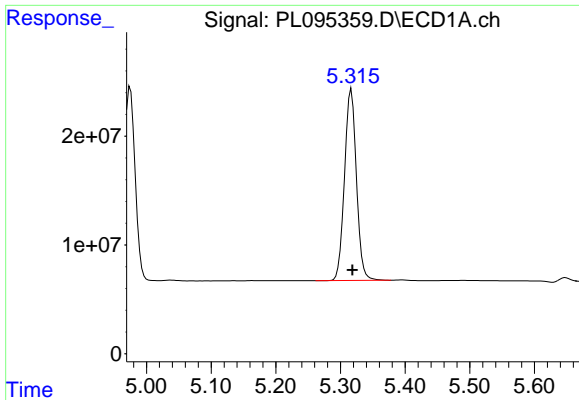
#4 Heptachlor

R.T.: 4.975 min
 Delta R.T.: 0.000 min
 Response: 221529622
 Conc: 48.43 ng/ml



#4 Heptachlor

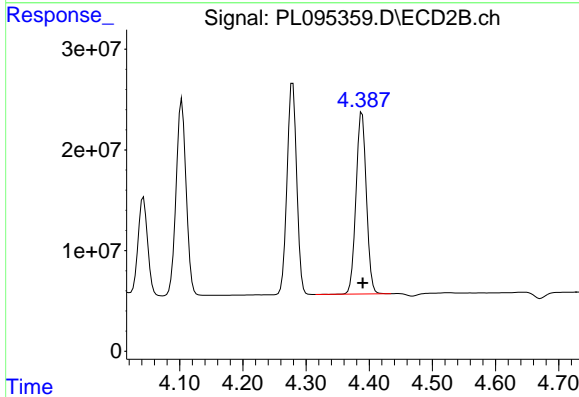
R.T.: 4.103 min
 Delta R.T.: -0.001 min
 Response: 215622027
 Conc: 49.49 ng/ml



#5 Aldrin

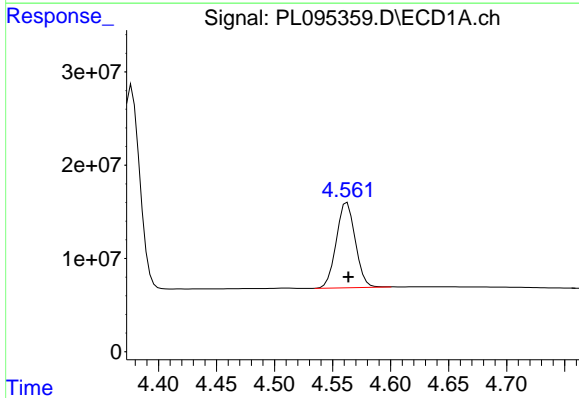
R.T.: 5.317 min
 Delta R.T.: -0.001 min
 Response: 225690277
 Conc: 49.14 ng/ml

Instrument :
 ECD_L
 ClientSampleId :



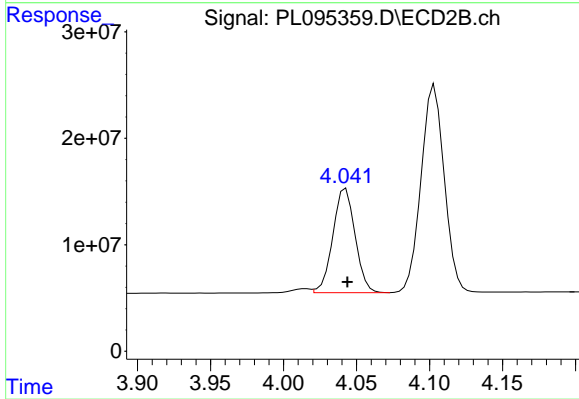
#5 Aldrin

R.T.: 4.389 min
 Delta R.T.: -0.001 min
 Response: 205556944
 Conc: 49.94 ng/ml



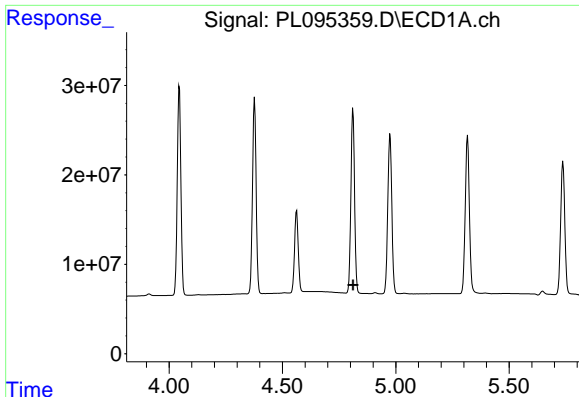
#6 beta-BHC

R.T.: 4.563 min
 Delta R.T.: 0.000 min
 Response: 104384067
 Conc: 50.49 ng/ml



#6 beta-BHC

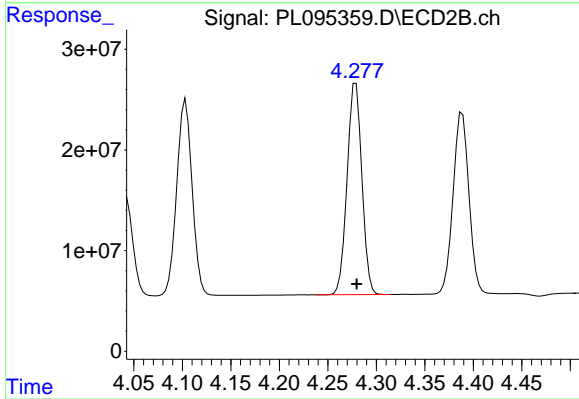
R.T.: 4.043 min
 Delta R.T.: -0.001 min
 Response: 103867190
 Conc: 50.04 ng/ml



#7 delta-BHC

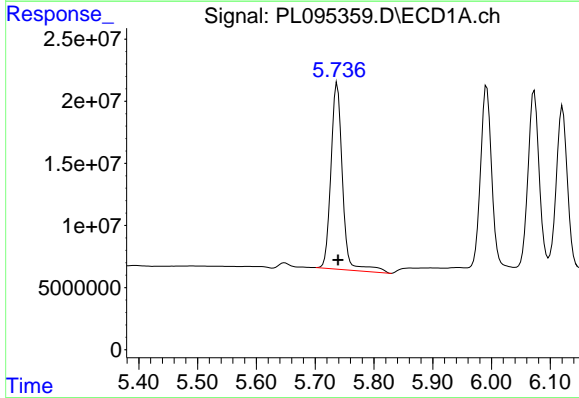
R.T.: 0.000 min
 Exp R.T.: 4.812 min
 Response: 0
 Conc: N.D.

Instrument :
 ECD_L
 ClientSampleId :



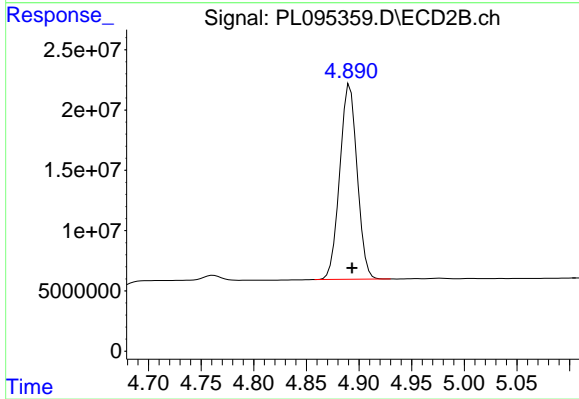
#7 delta-BHC

R.T.: 4.279 min
 Delta R.T.: 0.000 min
 Response: 222860818
 Conc: 50.86 ng/ml



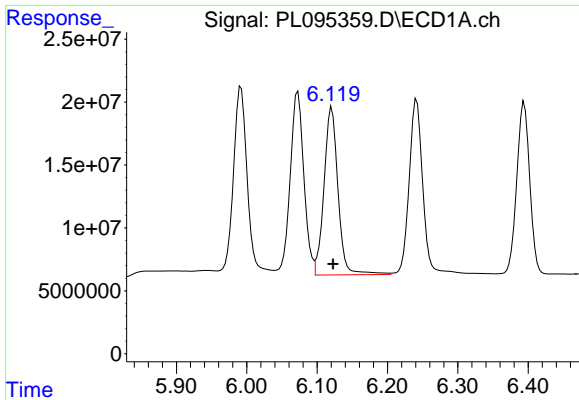
#8 Heptachlor epoxide

R.T.: 5.737 min
 Delta R.T.: -0.001 min
 Response: 206089090
 Conc: 51.46 ng/ml



#8 Heptachlor epoxide

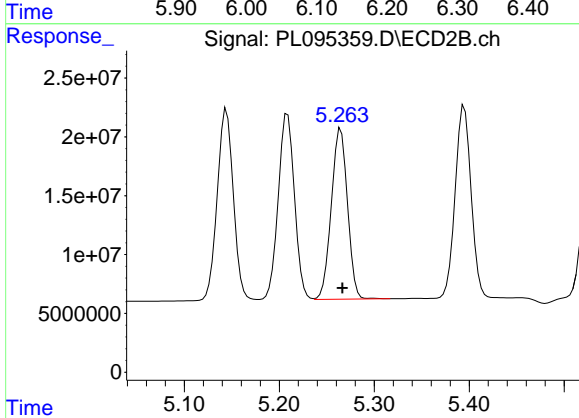
R.T.: 4.891 min
 Delta R.T.: -0.002 min
 Response: 186817457
 Conc: 48.36 ng/ml



#9 Endosulfan I

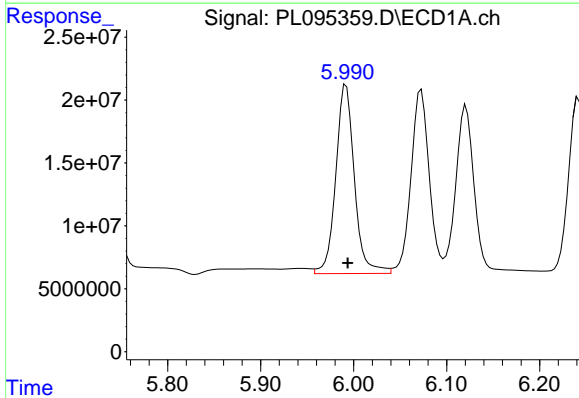
R.T.: 6.121 min
 Delta R.T.: -0.002 min
 Response: 184774363
 Conc: 48.66 ng/ml

Instrument :
 ECD_L
 ClientSampleId :



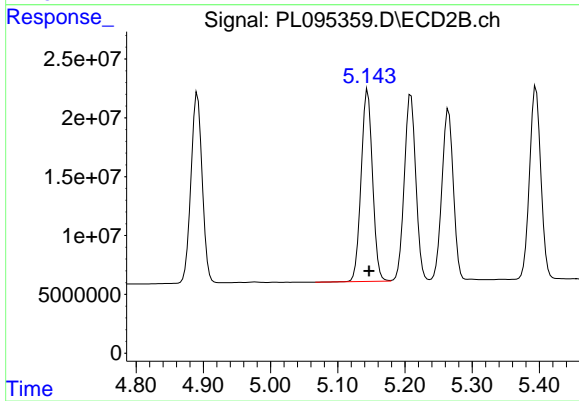
#9 Endosulfan I

R.T.: 5.265 min
 Delta R.T.: -0.002 min
 Response: 171875788
 Conc: 46.96 ng/ml



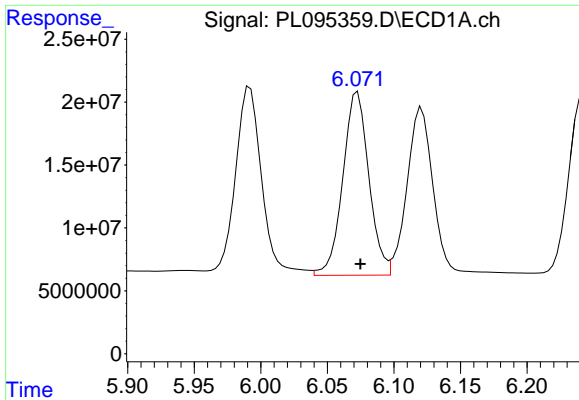
#10 gamma-Chlordane

R.T.: 5.992 min
 Delta R.T.: -0.002 min
 Response: 209383956
 Conc: 51.33 ng/ml



#10 gamma-Chlordane

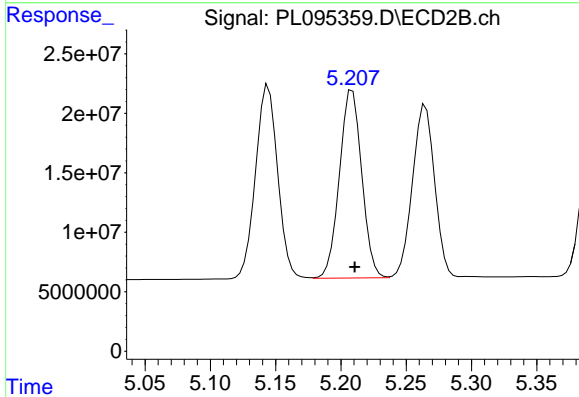
R.T.: 5.144 min
 Delta R.T.: -0.002 min
 Response: 191858407
 Conc: 47.34 ng/ml



#11 alpha-Chlordane

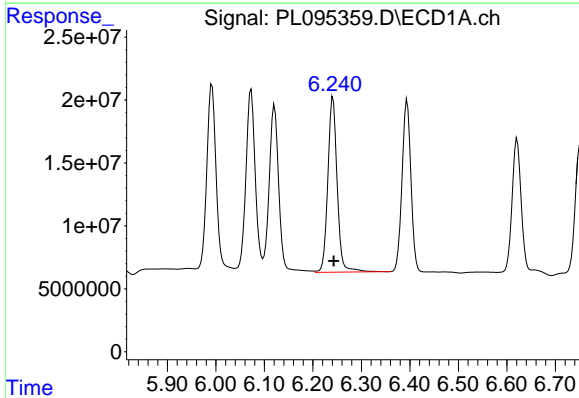
R.T.: 6.073 min
 Delta R.T.: -0.002 min
 Response: 198508782
 Conc: 48.82 ng/ml

Instrument :
 ECD_L
 ClientSampleId :



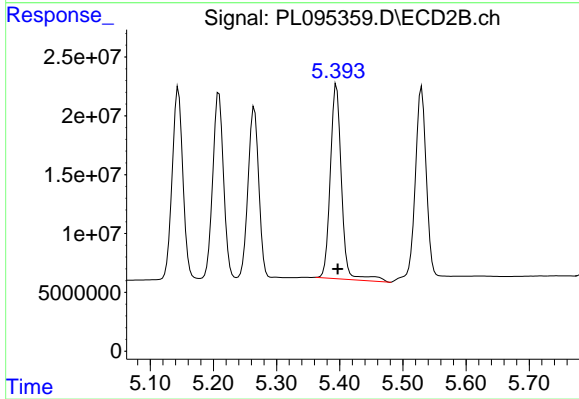
#11 alpha-Chlordane

R.T.: 5.209 min
 Delta R.T.: -0.002 min
 Response: 188277302
 Conc: 47.29 ng/ml



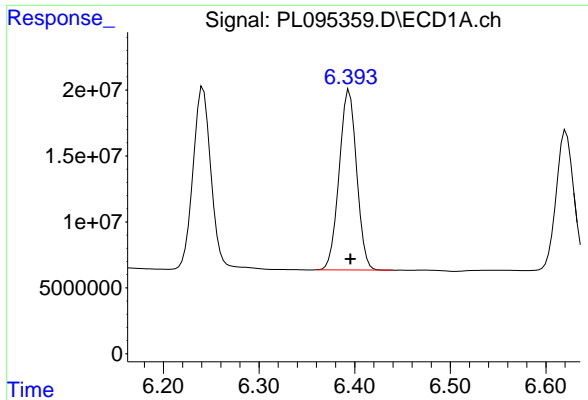
#12 4,4'-DDE

R.T.: 6.242 min
 Delta R.T.: -0.002 min
 Response: 186830989
 Conc: 47.65 ng/ml



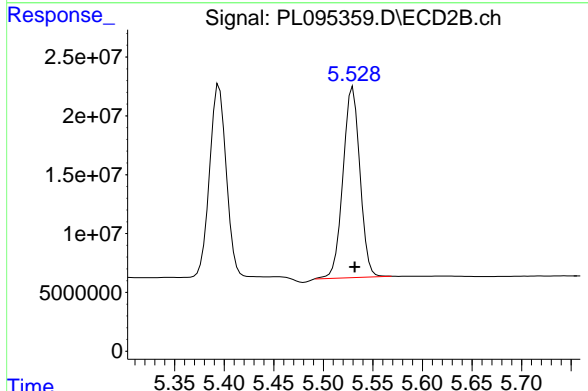
#12 4,4'-DDE

R.T.: 5.395 min
 Delta R.T.: -0.002 min
 Response: 205316916
 Conc: 50.48 ng/ml

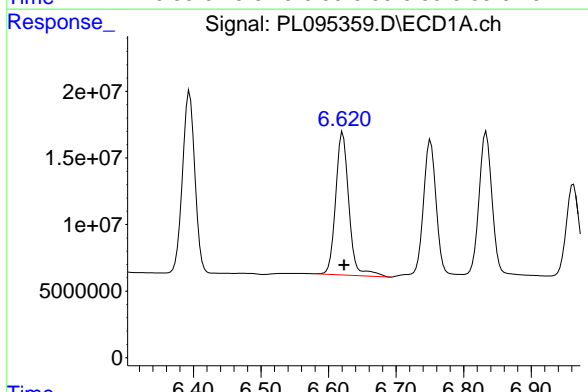


#13 Dieldrin
 R.T.: 6.394 min
 Delta R.T.: -0.001 min
 Response: 174004183
 Conc: 45.14 ng/ml

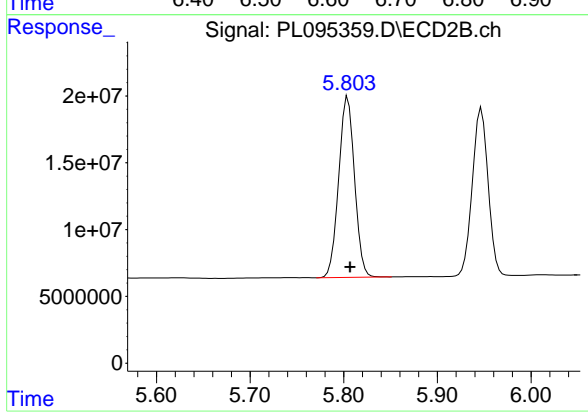
Instrument :
 ECD_L
 ClientSampleId :



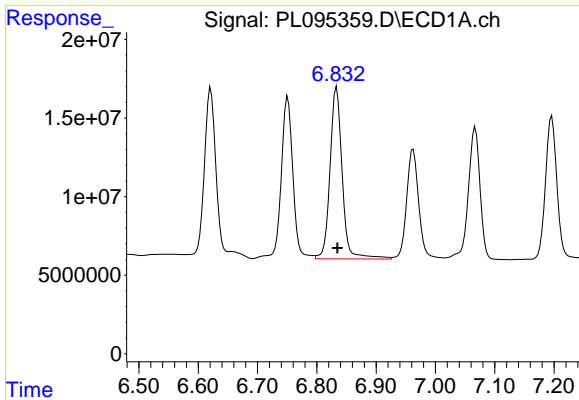
#13 Dieldrin
 R.T.: 5.530 min
 Delta R.T.: -0.002 min
 Response: 192928915
 Conc: 47.44 ng/ml



#14 Endrin
 R.T.: 6.621 min
 Delta R.T.: -0.002 min
 Response: 146654176
 Conc: 46.05 ng/ml



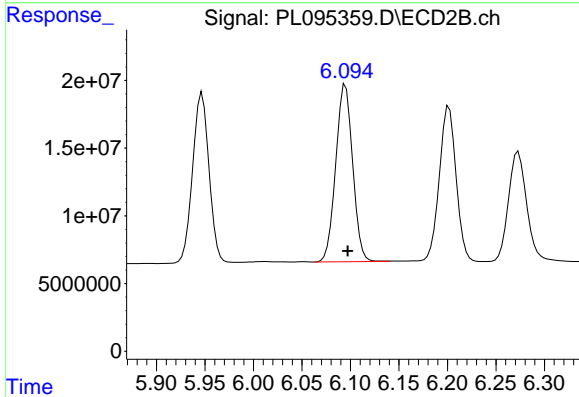
#14 Endrin
 R.T.: 5.804 min
 Delta R.T.: -0.002 min
 Response: 159238409
 Conc: 43.74 ng/ml



#15 Endosulfan II

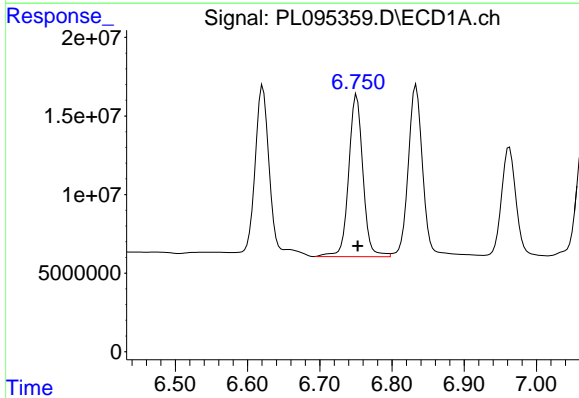
R.T.: 6.833 min
Delta R.T.: -0.001 min
Response: 156042669
Conc: 48.88 ng/ml

Instrument :
ECD_L
ClientSampleId :



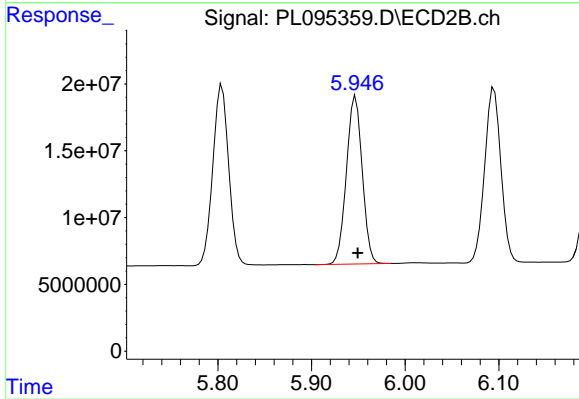
#15 Endosulfan II

R.T.: 6.095 min
Delta R.T.: -0.002 min
Response: 158821984
Conc: 44.23 ng/ml



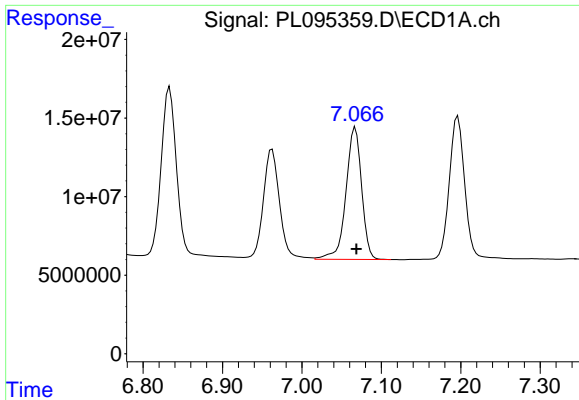
#16 4,4'-DDD

R.T.: 6.751 min
Delta R.T.: -0.002 min
Response: 140705943
Conc: 49.70 ng/ml



#16 4,4'-DDD

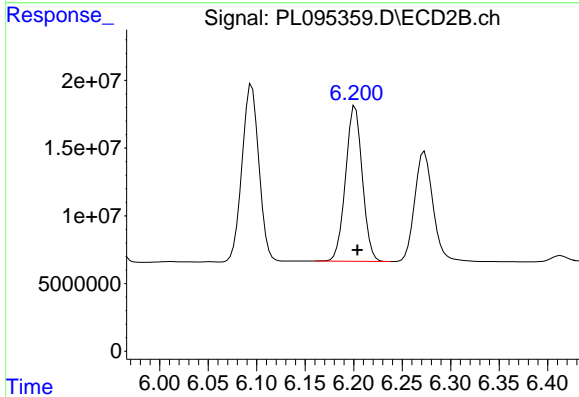
R.T.: 5.947 min
Delta R.T.: -0.002 min
Response: 147683454
Conc: 45.21 ng/ml



#17 4,4'-DDT

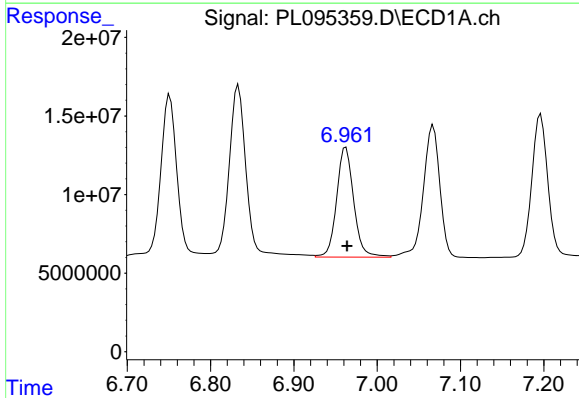
R.T.: 7.067 min
 Delta R.T.: -0.001 min
 Response: 115407596
 Conc: 40.51 ng/ml

Instrument :
 ECD_L
 ClientSampleId :



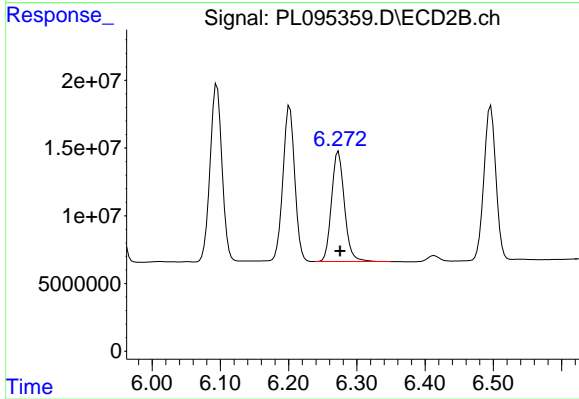
#17 4,4'-DDT

R.T.: 6.202 min
 Delta R.T.: -0.002 min
 Response: 137696540
 Conc: 40.07 ng/ml



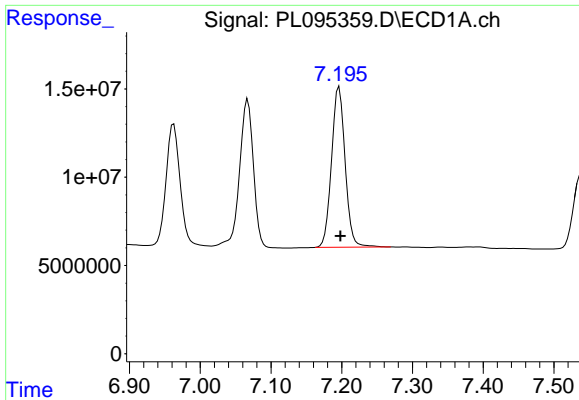
#18 Endrin aldehyde

R.T.: 6.963 min
 Delta R.T.: -0.001 min
 Response: 99878061
 Conc: 43.04 ng/ml



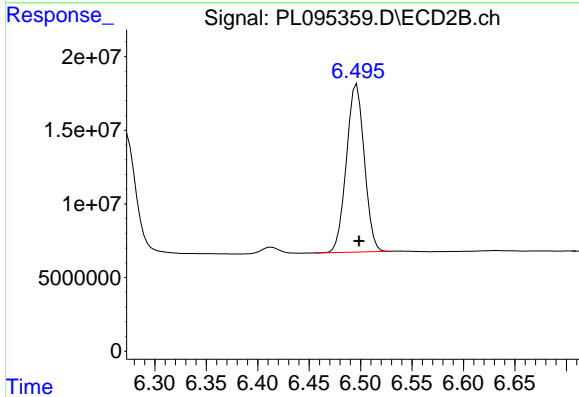
#18 Endrin aldehyde

R.T.: 6.273 min
 Delta R.T.: -0.002 min
 Response: 106401064
 Conc: 40.72 ng/ml

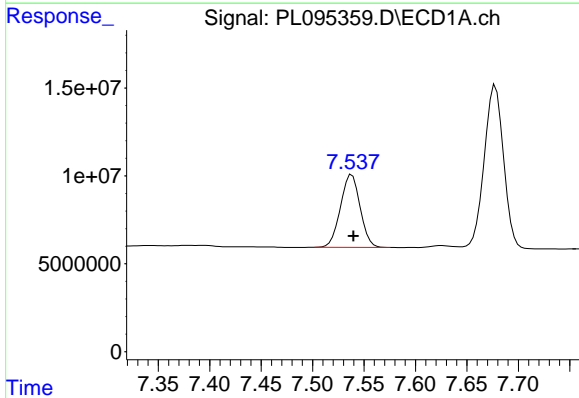


#19 Endosulfan Sulfate
 R.T.: 7.196 min
 Delta R.T.: -0.002 min
 Response: 121598073
 Conc: 43.40 ng/ml

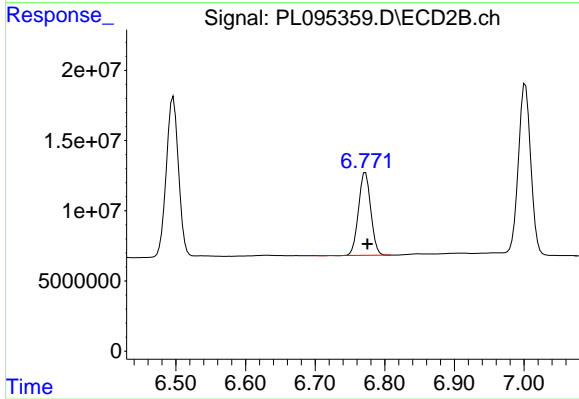
Instrument :
 ECD_L
 ClientSampleId :



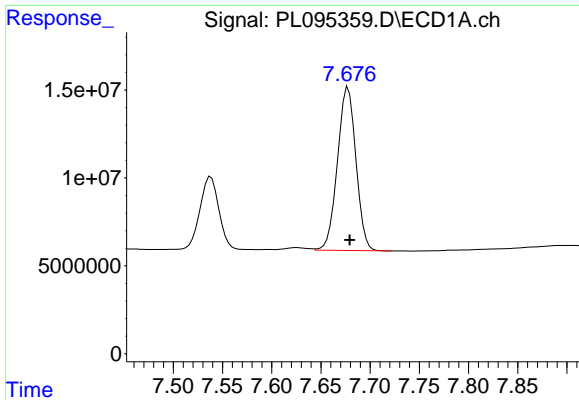
#19 Endosulfan Sulfate
 R.T.: 6.496 min
 Delta R.T.: -0.002 min
 Response: 138064748
 Conc: 41.61 ng/ml



#20 Methoxychlor
 R.T.: 7.538 min
 Delta R.T.: -0.001 min
 Response: 55115448
 Conc: 39.51 ng/ml



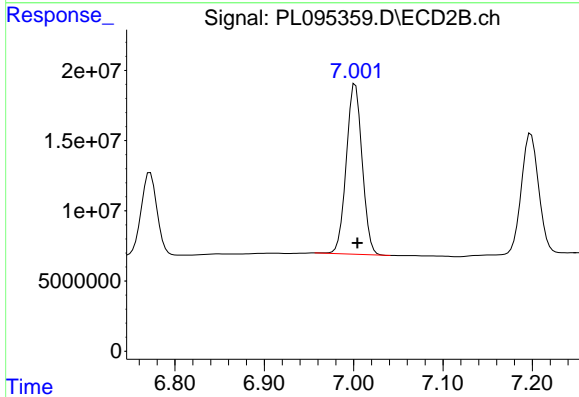
#20 Methoxychlor
 R.T.: 6.772 min
 Delta R.T.: -0.003 min
 Response: 72092428
 Conc: 37.80 ng/ml



#21 Endrin ketone

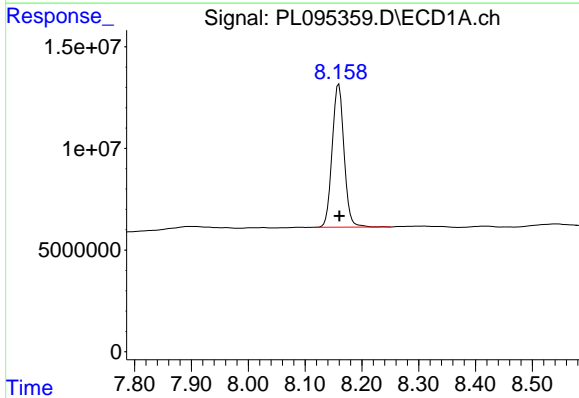
R.T.: 7.678 min
 Delta R.T.: -0.002 min
 Response: 121437659
 Conc: 42.60 ng/ml

Instrument :
 ECD_L
 ClientSampleId :



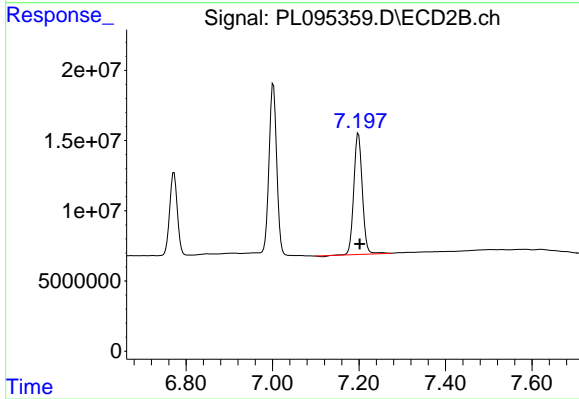
#21 Endrin ketone

R.T.: 7.002 min
 Delta R.T.: -0.002 min
 Response: 149199255
 Conc: 42.37 ng/ml



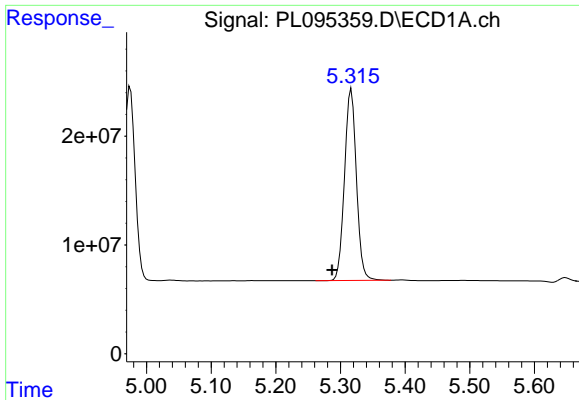
#22 Mirex

R.T.: 8.159 min
 Delta R.T.: -0.001 min
 Response: 102482354
 Conc: 43.13 ng/ml



#22 Mirex

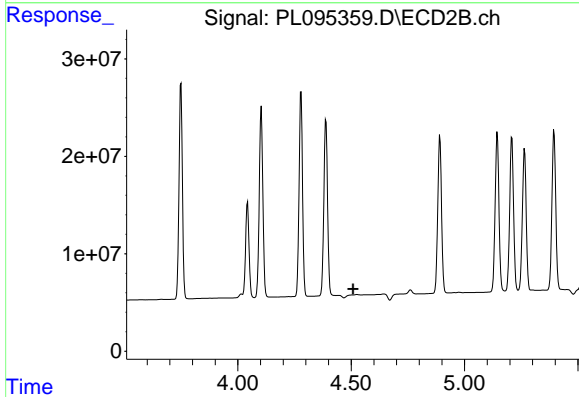
R.T.: 7.199 min
 Delta R.T.: -0.003 min
 Response: 118090036
 Conc: 40.97 ng/ml



#24 Chlordane-2

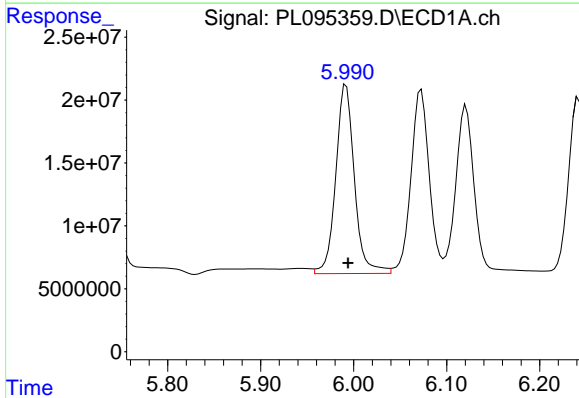
R.T.: 5.317 min
 Delta R.T.: 0.030 min
 Response: 225690277
 Conc: 1066.01 ng/m

Instrument :
 ECD_L
 ClientSampleId :



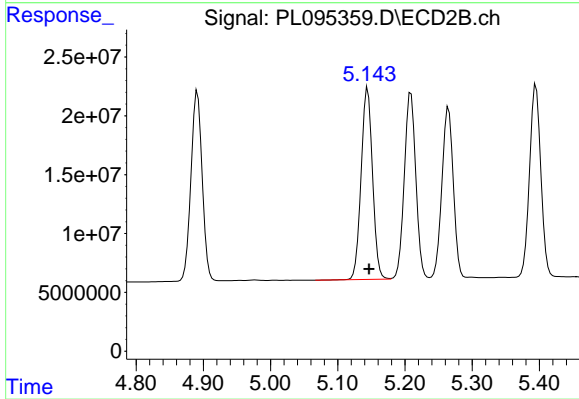
#24 Chlordane-2

R.T.: 0.000 min
 Exp R.T. : 4.508 min
 Response: 0
 Conc: N.D.



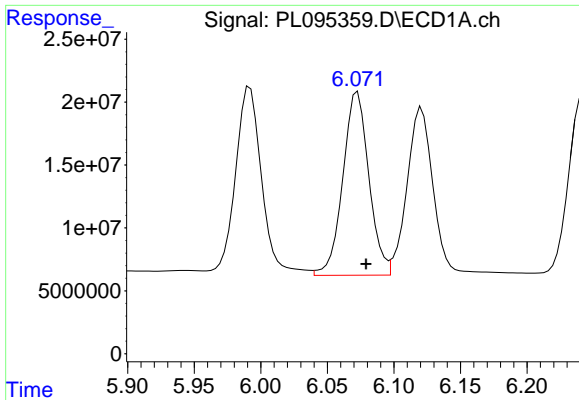
#25 Chlordane-3

R.T.: 5.992 min
 Delta R.T.: -0.002 min
 Response: 209383956
 Conc: 268.81 ng/ml



#25 Chlordane-3

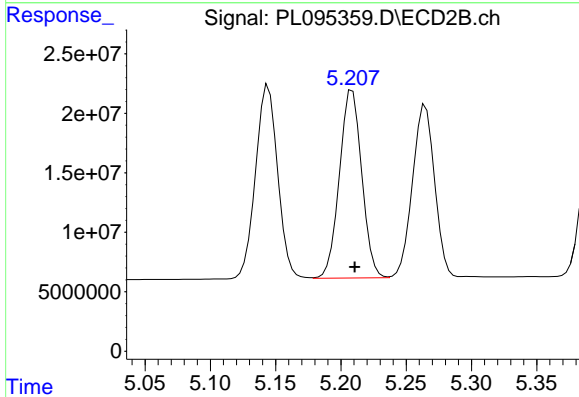
R.T.: 5.144 min
 Delta R.T.: -0.002 min
 Response: 191858407
 Conc: 371.37 ng/ml



#26 Chlordane-4

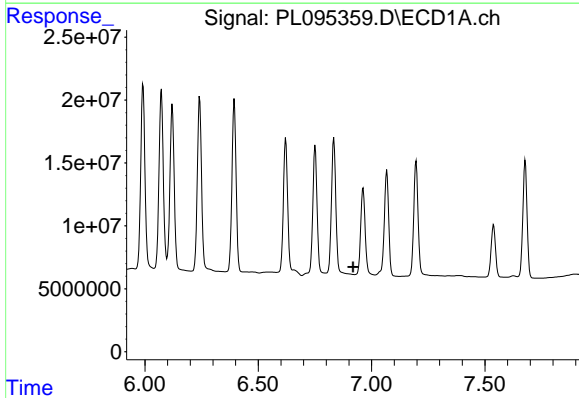
R.T.: 6.073 min
 Delta R.T.: -0.006 min
 Response: 198508782
 Conc: 210.52 ng/ml

Instrument :
 ECD_L
 ClientSampleId :



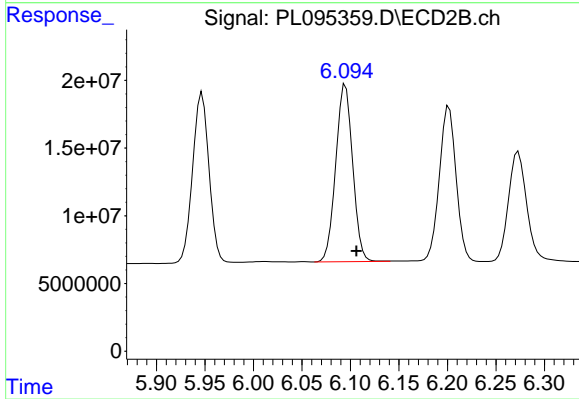
#26 Chlordane-4

R.T.: 5.209 min
 Delta R.T.: -0.002 min
 Response: 188277302
 Conc: 433.21 ng/ml



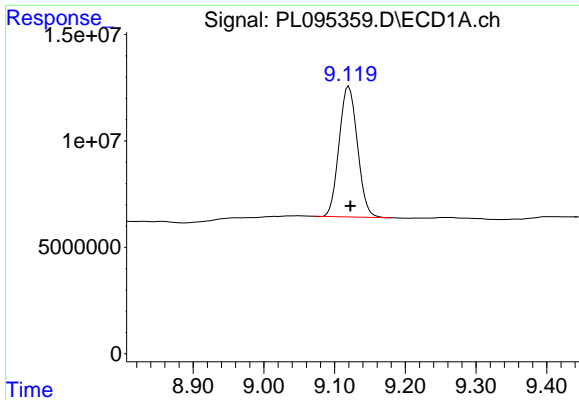
#27 Chlordane-5

R.T.: 0.000 min
 Exp R.T. : 6.919 min
 Response: 0
 Conc: N.D.



#27 Chlordane-5

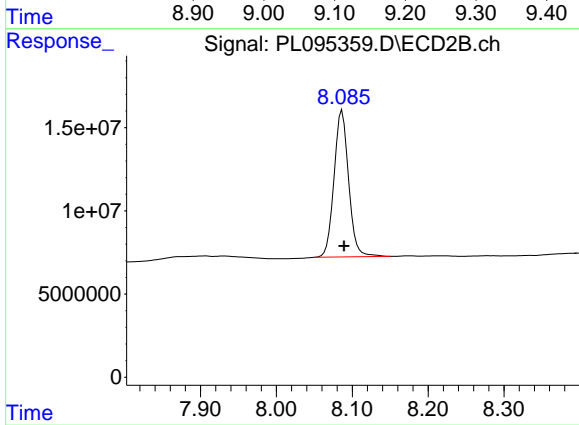
R.T.: 6.095 min
 Delta R.T.: -0.011 min
 Response: 158821984
 Conc: 859.71 ng/ml



#28 Decachlorobiphenyl

R.T.: 9.120 min
Delta R.T.: -0.002 min
Response: 110439251
Conc: 39.86 ng/ml

Instrument :
ECD_L
ClientSampleId :



#28 Decachlorobiphenyl

R.T.: 8.087 min
Delta R.T.: -0.003 min
Response: 117743005
Conc: 39.79 ng/ml