

Data Path : Z:\pestpcbsrv\HPCHEM1\ECD\_L\Data\PL042419\  
 Data File : PL047746.D  
 Signal(s) : Signal #1: ECD1A.ch Signal #2: ECD2B.ch  
 Acq On : 25 Apr 2019 06:42  
 Operator : AJ\SJ  
 Sample : K2534-01MSD  
 Misc :  
 ALS Vial : 42 Sample Multiplier: 1

**Instrument :**  
 ECD\_L  
**Client Sample ID :**  
 EXT-074-SW065-042219MSD

**Manual Integrations**  
**APPROVED**

mohammad  
 4/25/2019 2:09:05 PM

Integration File signal 1: autoint1.e  
 Integration File signal 2: autoint2.e  
 Quant Time: Apr 25 07:55:45 2019  
 Quant Method : Z:\pestpcbsrv\HPCHEM1\ECD\_L\methods\PL042419.M  
 Quant Title : GC Extractables  
 QLast Update : Thu Apr 25 01:53:03 2019  
 Response via : Initial Calibration  
 Integrator: ChemStation

Volume Inj. : 1 µl  
 Signal #1 Phase : ZB-MR2 Signal #2 Phase: ZB-MR1  
 Signal #1 Info : 30M x 0.32mm x0.2 Signal #2 Info : 30M x 0.32mm x0.5µm

	Compound	RT#1	RT#2	Resp#1	Resp#2	ng/ml	ng/ml
-----							
System Monitoring Compounds							
1)	SA Tetrachlo...	3.330	3.942	188.8E6	49094766	20.417	20.565
28)	SA Decachlor...	8.001	8.981	171.4E6	49240703	15.308	17.250
Target Compounds							
2)	A alpha-BHC	3.759	4.329	725.0E6	171.4E6	49.596	51.654m
3)	MA gamma-BHC...	4.035	4.614	679.8E6	156.8E6	51.284	49.982
4)	MA Heptachlor	4.320	5.117	1011.8E6	246.0E6	71.016	73.206m
5)	MB Aldrin	4.559	5.419	720.3E6	171.0E6	51.726	54.796m
6)	B beta-BHC	4.288	4.788	272.6E6	73480801	48.251	50.999
7)	B delta-BHC	4.483	5.003	584.2E6	92136621	44.970	36.674
8)	B Heptachlo...	4.996	5.806	657.6E6	176.3E6	51.314	63.071
9)	A Endosulfan I	5.327	6.163	585.9E6	128.7E6	48.450	45.843
10)	B gamma-Chl...	5.218	6.041	1712.0E6	446.3E6	128.595m	147.468
11)	B alpha-Chl...	5.275	6.113	1702.7E6	493.7E6	130.485	163.194 #
12)	B 4,4'-DDE	5.443	6.273	714.6E6	161.0E6	57.453	58.310
13)	MA Dieldrin	5.566	6.419	630.0E6	143.3E6	48.528	49.007
14)	MA Endrin	5.819	6.636	572.9E6	119.8E6	48.212	46.893
15)	B Endosulfa...	6.095	6.847	755.2E6	123.2E6	67.448	46.939 #
16)	A 4,4'-DDD	5.954	6.762	429.9E6	115.5E6	43.722	51.442m
17)	MA 4,4'-DDT	6.188	7.060	549.1E6	125.7E6	55.073	52.766
18)	B Endrin al...	6.261	6.969	404.5E6	102.5E6	42.872	44.348m
19)	B Endosulfa...	6.473	7.194	459.5E6	111.4E6	41.226	40.692
20)	A Methoxychlor	6.734	7.520	224.3E6	63633965	42.165	45.383
21)	B Endrin ke...	6.955	7.662	492.2E6	125.0E6	41.504	44.471
22)	Mirex	7.130	8.113	365.0E6	98271017	38.884	42.234
-----							

(f)=RT Delta > 1/2 Window (#)=Amounts differ by > 25% (m)=manual int.

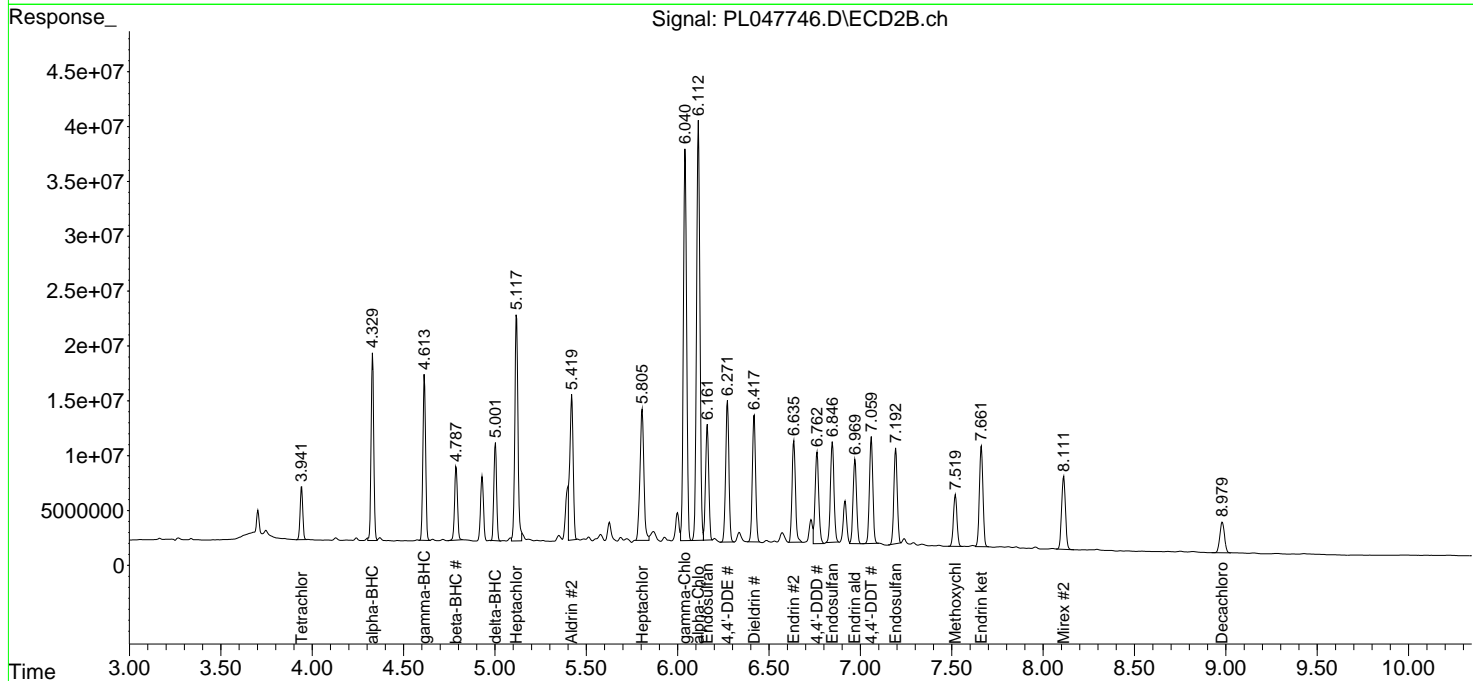
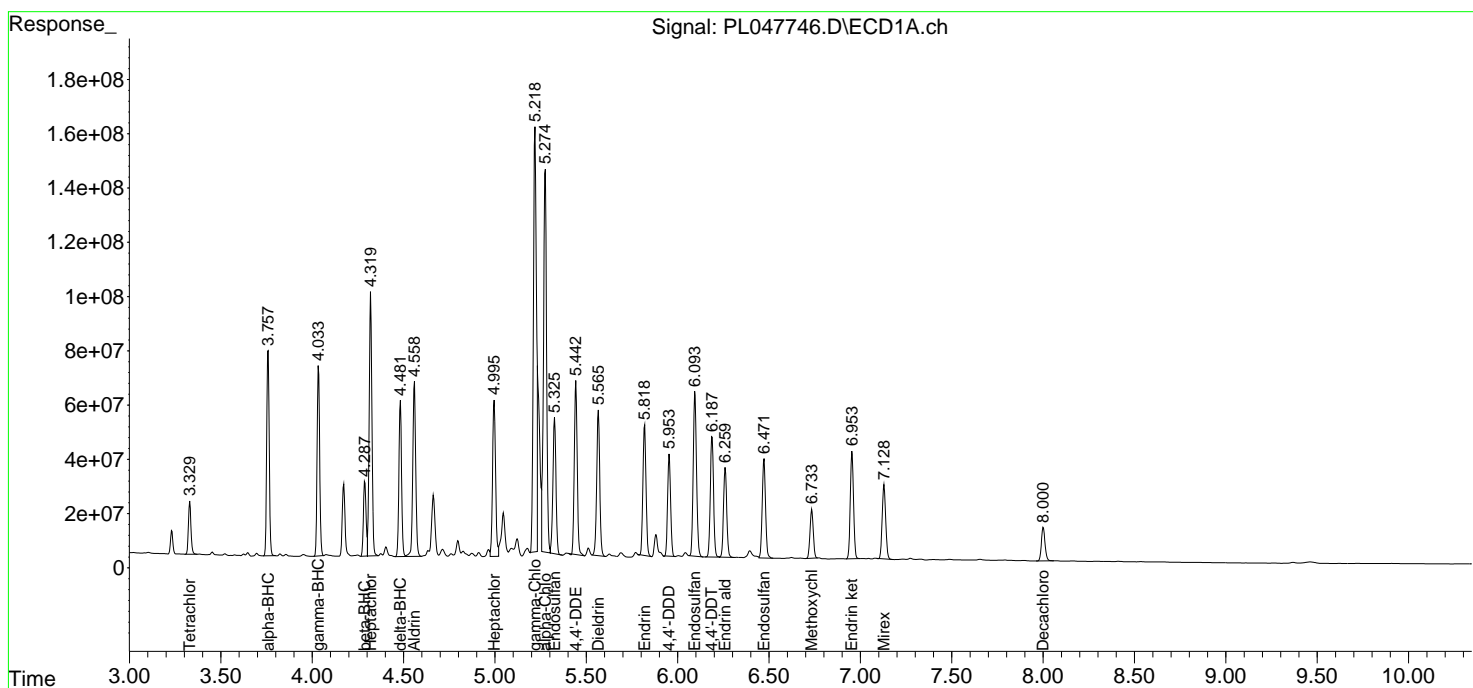
Data Path : Z:\pestpcbsrv\HPCHEM1\ECD\_L\Data\PL042419\  
 Data File : PL047746.D  
 Signal(s) : Signal #1: ECD1A.ch Signal #2: ECD2B.ch  
 Acq On : 25 Apr 2019 06:42  
 Operator : AJ\SJ  
 Sample : K2534-01MSD  
 Misc :  
 ALS Vial : 42 Sample Multiplier: 1

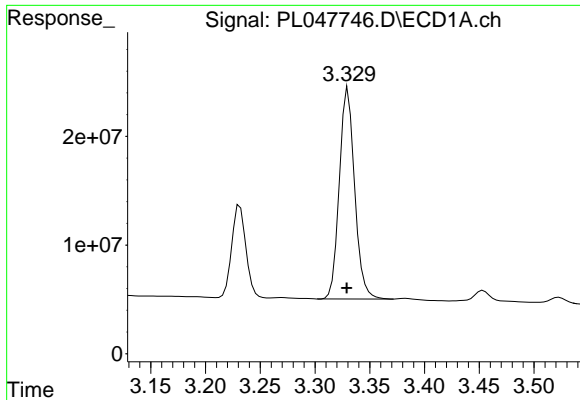
**Instrument :**  
 ECD\_L  
**Client Sampled :**  
 EXT-074-SW065-042219MSD

**Manual Integrations**  
**APPROVED**  
 mohammad  
 4/25/2019 2:09:05 PM

Integration File signal 1: autoint1.e  
 Integration File signal 2: autoint2.e  
 Quant Time: Apr 25 07:55:45 2019  
 Quant Method : Z:\pestpcbsrv\HPCHEM1\ECD\_L\methods\PL042419.M  
 Quant Title : GC Extractables  
 QLast Update : Thu Apr 25 01:53:03 2019  
 Response via : Initial Calibration  
 Integrator: ChemStation

Volume Inj. : 1 µl  
 Signal #1 Phase : ZB-MR2 Signal #2 Phase: ZB-MR1  
 Signal #1 Info : 30M x 0.32mm x0.2 Signal #2 Info : 30M x 0.32mm x0.5µm

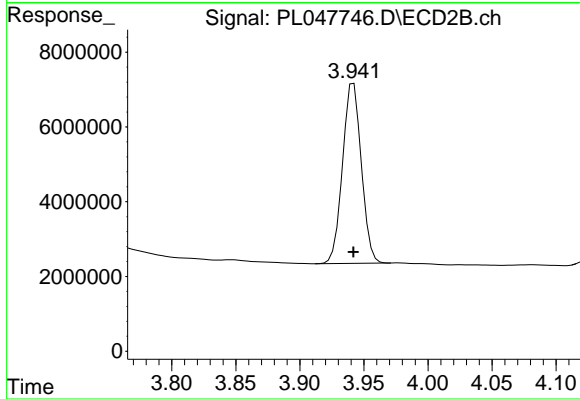




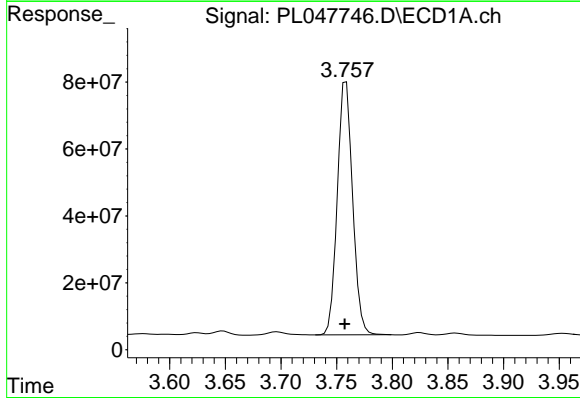
#1 Tetrachloro-m-xylene  
 R.T.: 3.330 min  
 Delta R.T.: 0.001 min  
 Response: 188825671  
 Conc: 20.42 ng/ml

**Instrument :**  
 ECD\_L  
**ClientSampled :**  
 EXT-074-SW065-042219MSD

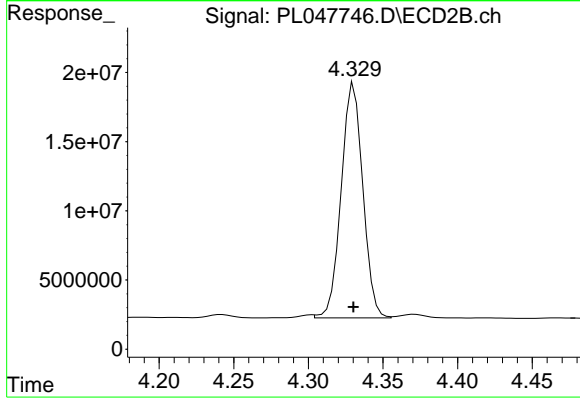
**Manual Integrations**  
**APPROVED**  
 mohammad  
 4/25/2019 2:09:05 PM



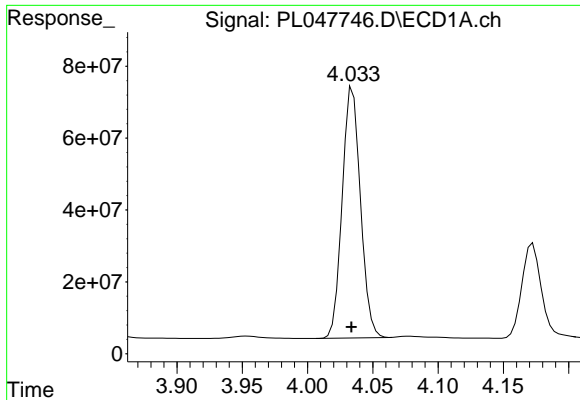
#1 Tetrachloro-m-xylene  
 R.T.: 3.942 min  
 Delta R.T.: 0.000 min  
 Response: 49094766  
 Conc: 20.57 ng/ml



#2 alpha-BHC  
 R.T.: 3.759 min  
 Delta R.T.: 0.001 min  
 Response: 725016127  
 Conc: 49.60 ng/ml



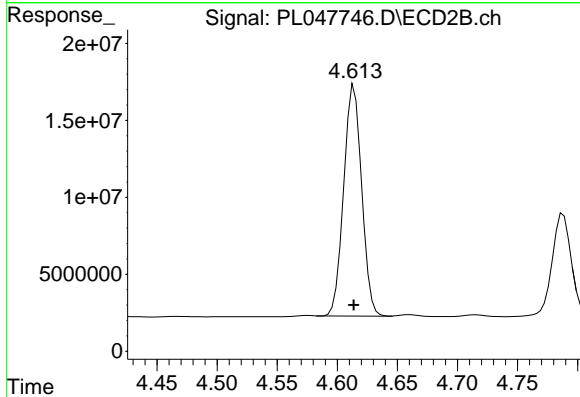
#2 alpha-BHC  
 R.T.: 4.329 min  
 Delta R.T.: 0.000 min  
 Response: 171426495  
 Conc: 51.65 ng/ml m



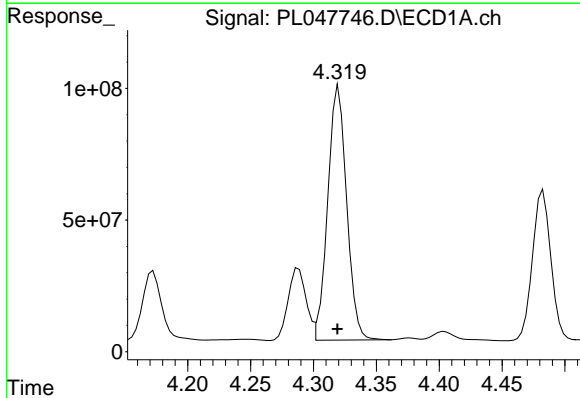
#3 gamma-BHC (Lindane)  
 R.T.: 4.035 min  
 Delta R.T.: 0.001 min  
 Response: 679750650  
 Conc: 51.28 ng/ml

**Instrument :**  
 ECD\_L  
**ClientSampled :**  
 EXT-074-SW065-042219MSD

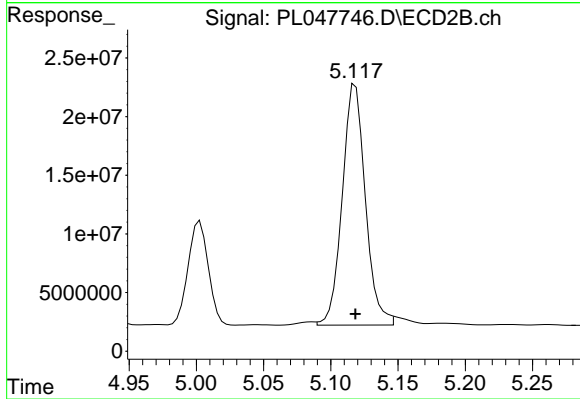
**Manual Integrations**  
**APPROVED**  
 mohammad  
 4/25/2019 2:09:05 PM



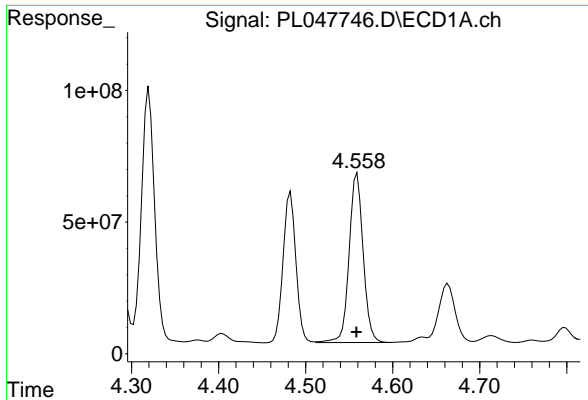
#3 gamma-BHC (Lindane)  
 R.T.: 4.614 min  
 Delta R.T.: 0.000 min  
 Response: 156767797  
 Conc: 49.98 ng/ml



#4 Heptachlor  
 R.T.: 4.320 min  
 Delta R.T.: 0.001 min  
 Response: 1011840961  
 Conc: 71.02 ng/ml



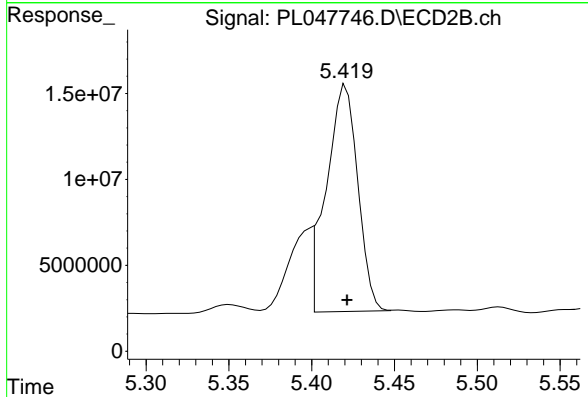
#4 Heptachlor  
 R.T.: 5.117 min  
 Delta R.T.: -0.002 min  
 Response: 246027651  
 Conc: 73.21 ng/ml m



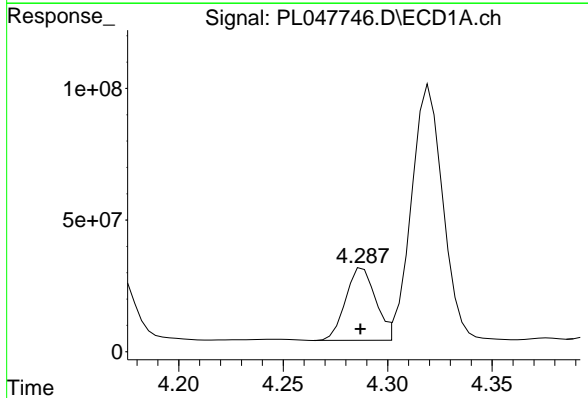
#5 Aldrin  
 R.T.: 4.559 min  
 Delta R.T.: 0.001 min  
 Response: 720311077  
 Conc: 51.73 ng/ml

**Instrument :**  
 ECD\_L  
**ClientSampleId :**  
 EXT-074-SW065-042219MSD

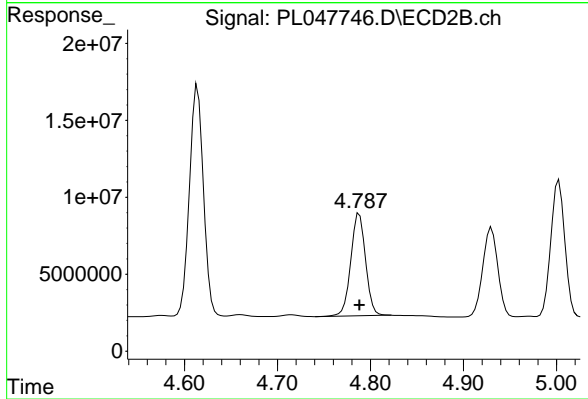
**Manual Integrations**  
**APPROVED**  
 mohammad  
 4/25/2019 2:09:05 PM



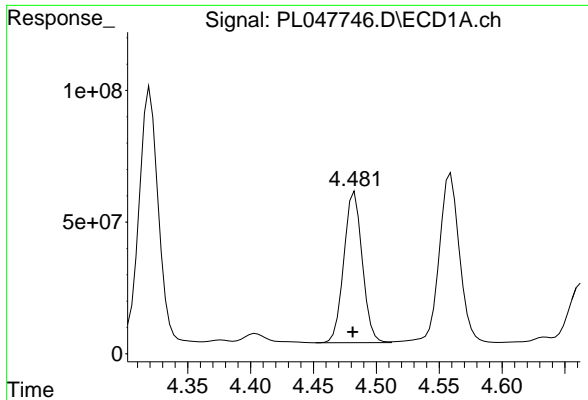
#5 Aldrin  
 R.T.: 5.419 min  
 Delta R.T.: -0.002 min  
 Response: 171017313  
 Conc: 54.80 ng/ml m



#6 beta-BHC  
 R.T.: 4.288 min  
 Delta R.T.: 0.001 min  
 Response: 272618037  
 Conc: 48.25 ng/ml



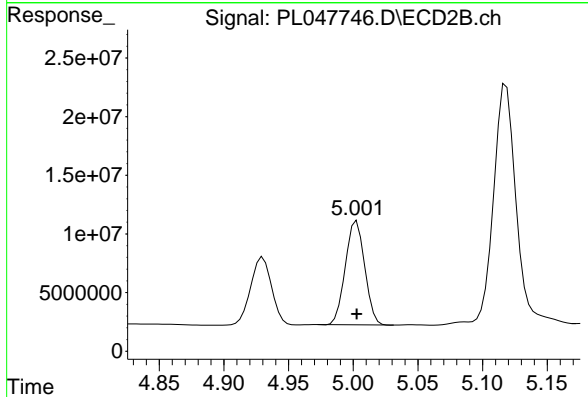
#6 beta-BHC  
 R.T.: 4.788 min  
 Delta R.T.: 0.000 min  
 Response: 73480801  
 Conc: 51.00 ng/ml



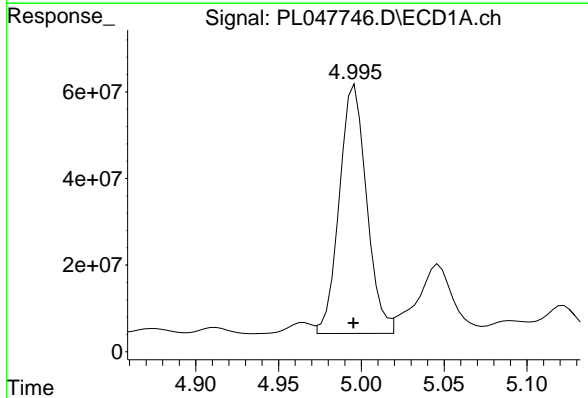
#7 delta-BHC  
 R.T.: 4.483 min  
 Delta R.T.: 0.002 min  
 Response: 584185514  
 Conc: 44.97 ng/ml

**Instrument :**  
 ECD\_L  
**ClientSampled :**  
 EXT-074-SW065-042219MSD

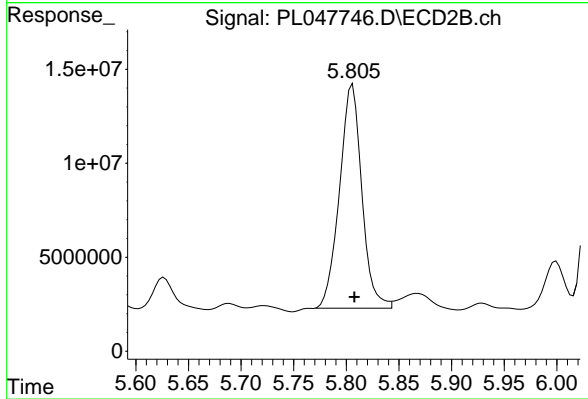
**Manual Integrations**  
**APPROVED**  
 mohammad  
 4/25/2019 2:09:05 PM



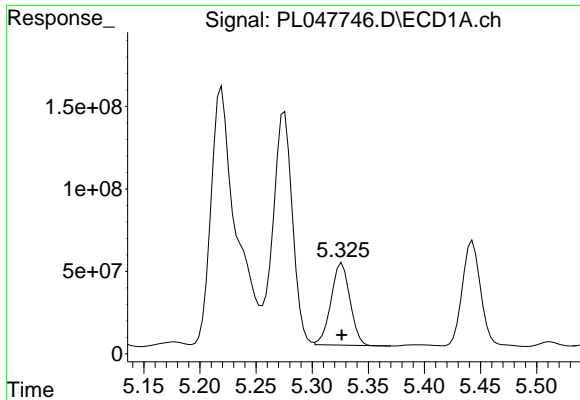
#7 delta-BHC  
 R.T.: 5.003 min  
 Delta R.T.: 0.000 min  
 Response: 92136621  
 Conc: 36.67 ng/ml



#8 Heptachlor epoxide  
 R.T.: 4.996 min  
 Delta R.T.: 0.000 min  
 Response: 657588050  
 Conc: 51.31 ng/ml



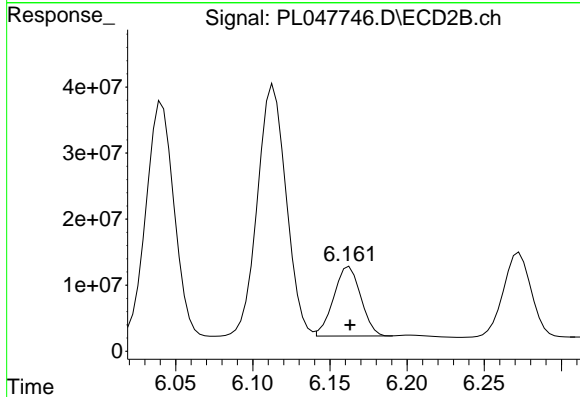
#8 Heptachlor epoxide  
 R.T.: 5.806 min  
 Delta R.T.: -0.002 min  
 Response: 176268813  
 Conc: 63.07 ng/ml



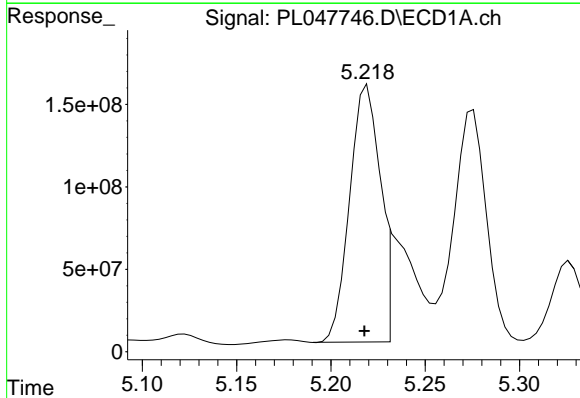
#9 Endosulfan I  
 R.T.: 5.327 min  
 Delta R.T.: 0.000 min  
 Response: 585918672  
 Conc: 48.45 ng/ml

**Instrument :**  
 ECD\_L  
**ClientSampled :**  
 EXT-074-SW065-042219MSD

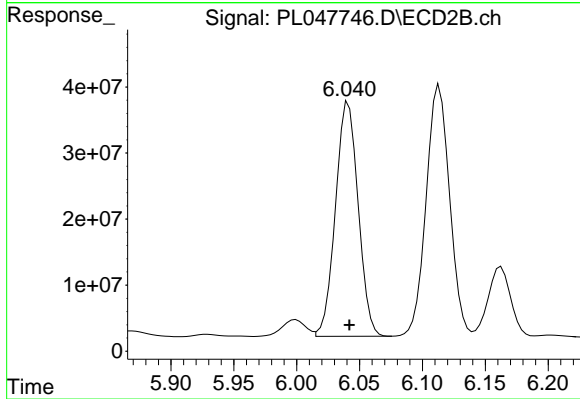
**Manual Integrations**  
**APPROVED**  
 mohammad  
 4/25/2019 2:09:05 PM



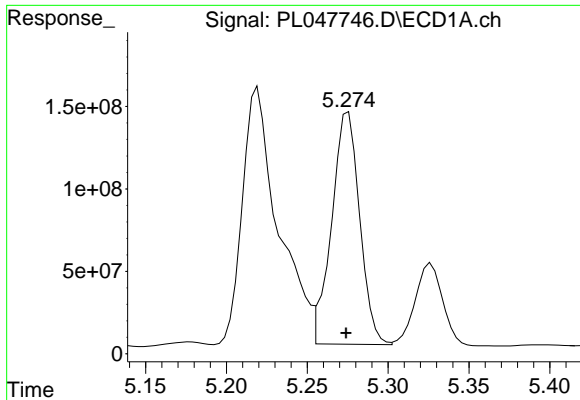
#9 Endosulfan I  
 R.T.: 6.163 min  
 Delta R.T.: 0.000 min  
 Response: 128728426  
 Conc: 45.84 ng/ml



#10 gamma-Chlordane  
 R.T.: 5.218 min  
 Delta R.T.: 0.000 min  
 Response: 1712045412  
 Conc: 128.59 ng/ml m



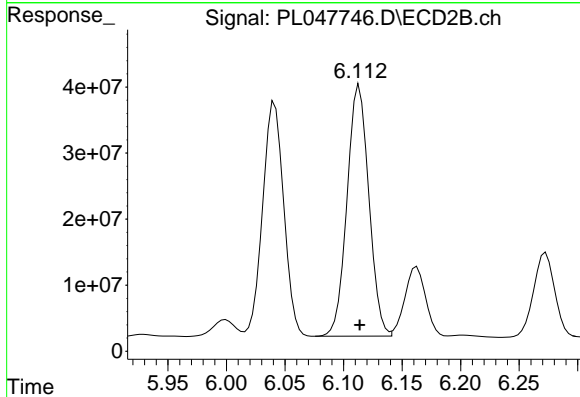
#10 gamma-Chlordane  
 R.T.: 6.041 min  
 Delta R.T.: 0.000 min  
 Response: 446288311  
 Conc: 147.47 ng/ml



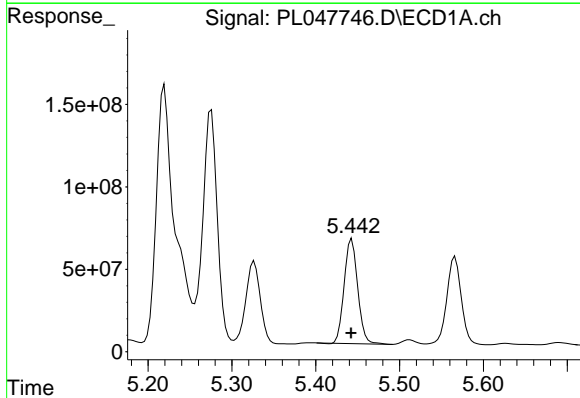
#11 alpha-Chlordane  
 R.T.: 5.275 min  
 Delta R.T.: 0.001 min  
 Response: 1702658839  
 Conc: 130.48 ng/ml

**Instrument :**  
 ECD\_L  
**ClientSampled :**  
 EXT-074-SW065-042219MSD

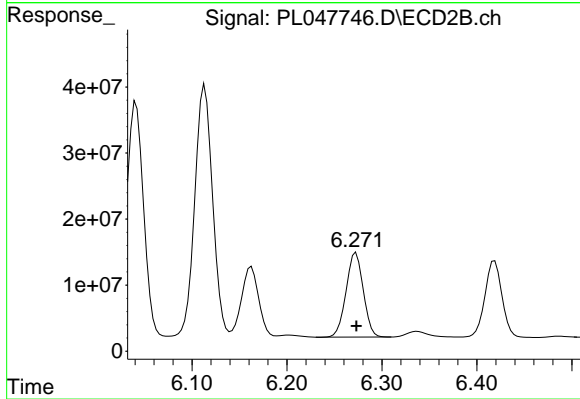
**Manual Integrations**  
**APPROVED**  
 mohammad  
 4/25/2019 2:09:05 PM



#11 alpha-Chlordane  
 R.T.: 6.113 min  
 Delta R.T.: 0.000 min  
 Response: 493728445  
 Conc: 163.19 ng/ml

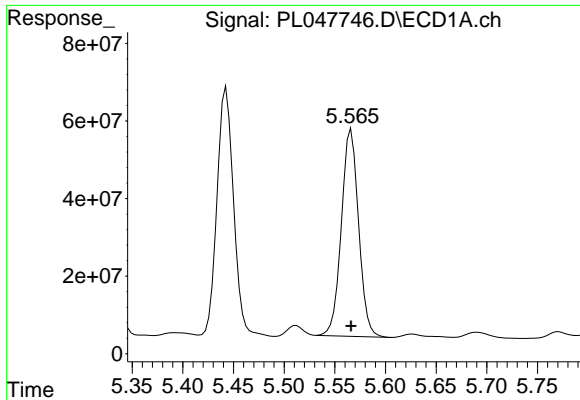


#12 4,4'-DDE  
 R.T.: 5.443 min  
 Delta R.T.: 0.000 min  
 Response: 714648908  
 Conc: 57.45 ng/ml



#12 4,4'-DDE  
 R.T.: 6.273 min  
 Delta R.T.: 0.000 min  
 Response: 161014414  
 Conc: 58.31 ng/ml

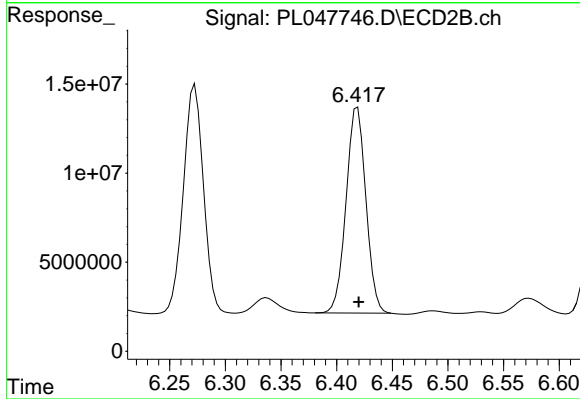




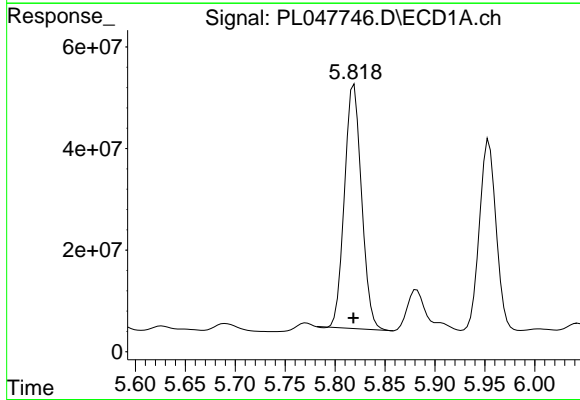
#13 Dieldrin  
 R.T.: 5.566 min  
 Delta R.T.: 0.000 min  
 Response: 62982879  
 Conc: 48.53 ng/ml

**Instrument :**  
 ECD\_L  
**ClientSampleId :**  
 EXT-074-SW065-042219MSD

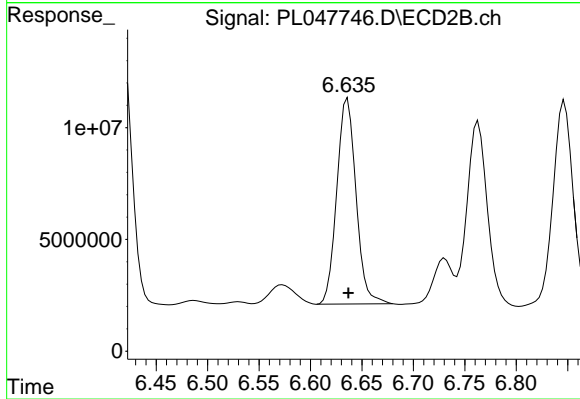
**Manual Integrations**  
**APPROVED**  
 mohammad  
 4/25/2019 2:09:05 PM



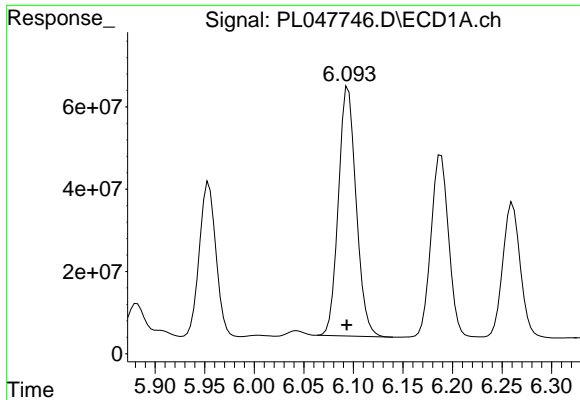
#13 Dieldrin  
 R.T.: 6.419 min  
 Delta R.T.: -0.001 min  
 Response: 143266455  
 Conc: 49.01 ng/ml



#14 Endrin  
 R.T.: 5.819 min  
 Delta R.T.: 0.000 min  
 Response: 572935177  
 Conc: 48.21 ng/ml



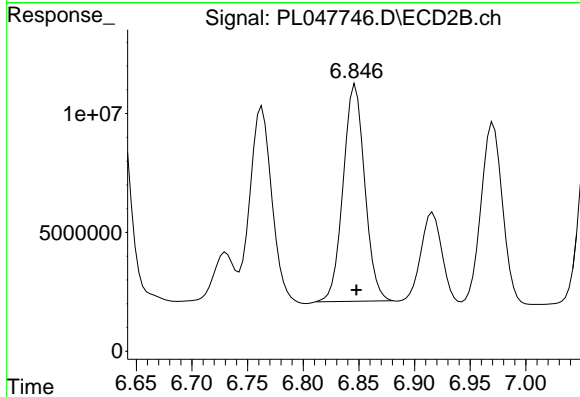
#14 Endrin  
 R.T.: 6.636 min  
 Delta R.T.: 0.000 min  
 Response: 119783182  
 Conc: 46.89 ng/ml



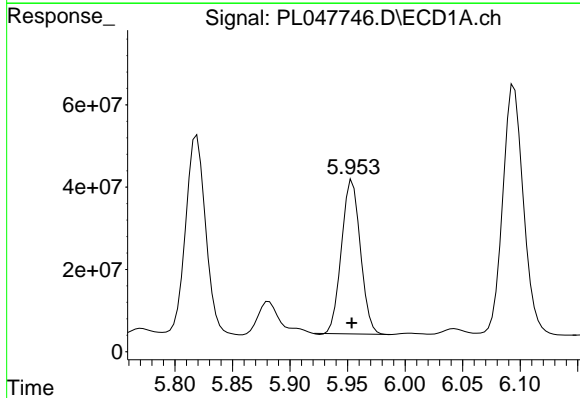
#15 Endosulfan II  
 R.T.: 6.095 min  
 Delta R.T.: 0.001 min  
 Response: 755178455  
 Conc: 67.45 ng/ml

**Instrument :**  
 ECD\_L  
**ClientSampleId :**  
 EXT-074-SW065-042219MSD

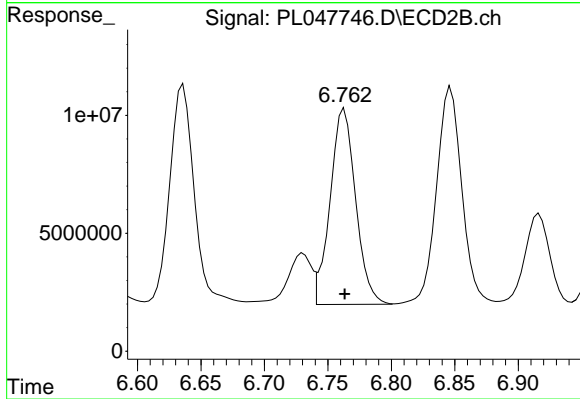
**Manual Integrations**  
**APPROVED**  
 mohammad  
 4/25/2019 2:09:05 PM



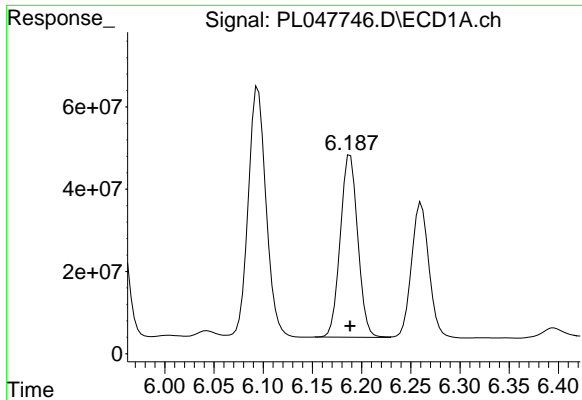
#15 Endosulfan II  
 R.T.: 6.847 min  
 Delta R.T.: 0.000 min  
 Response: 123150205  
 Conc: 46.94 ng/ml



#16 4,4'-DDD  
 R.T.: 5.954 min  
 Delta R.T.: 0.000 min  
 Response: 429922580  
 Conc: 43.72 ng/ml



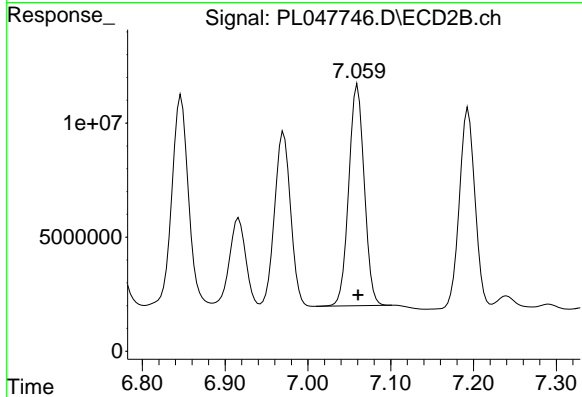
#16 4,4'-DDD  
 R.T.: 6.762 min  
 Delta R.T.: -0.002 min  
 Response: 115490371  
 Conc: 51.44 ng/ml m



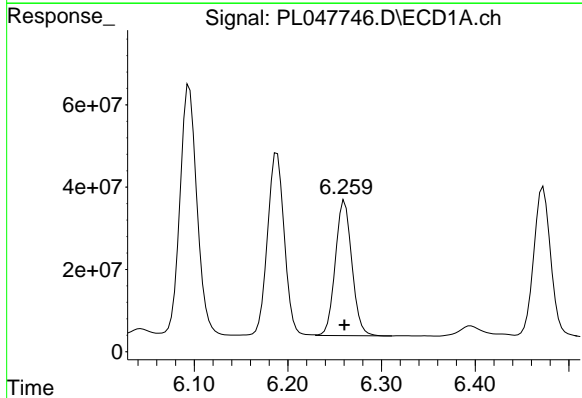
#17 4,4'-DDT  
 R.T.: 6.188 min  
 Delta R.T.: 0.000 min  
 Response: 549072210  
 Conc: 55.07 ng/ml

**Instrument :**  
 ECD\_L  
**ClientSampleId :**  
 EXT-074-SW065-042219MSD

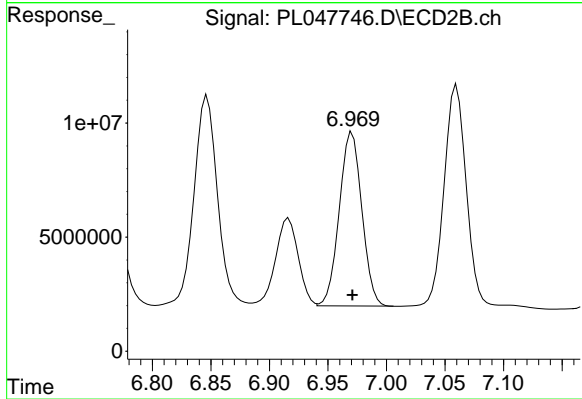
**Manual Integrations**  
**APPROVED**  
 mohammad  
 4/25/2019 2:09:05 PM



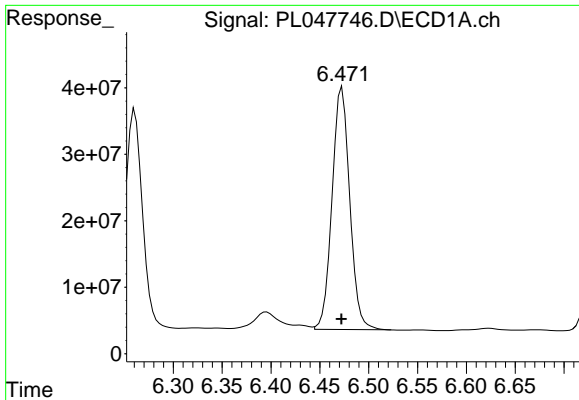
#17 4,4'-DDT  
 R.T.: 7.060 min  
 Delta R.T.: 0.000 min  
 Response: 125698982  
 Conc: 52.77 ng/ml



#18 Endrin aldehyde  
 R.T.: 6.261 min  
 Delta R.T.: 0.000 min  
 Response: 404501548  
 Conc: 42.87 ng/ml



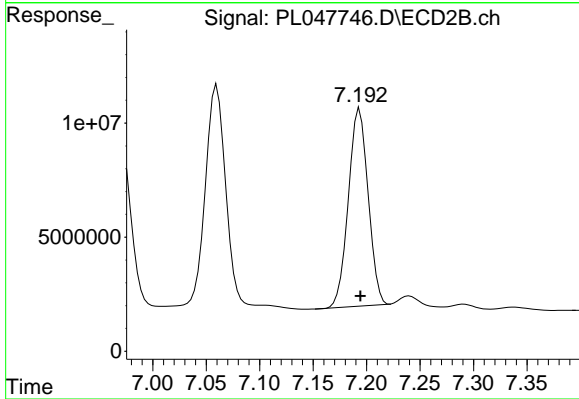
#18 Endrin aldehyde  
 R.T.: 6.969 min  
 Delta R.T.: -0.002 min  
 Response: 102458029  
 Conc: 44.35 ng/ml m



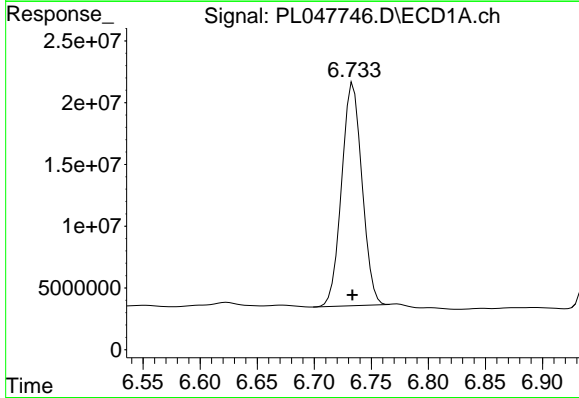
#19 Endosulfan Sulfate  
 R.T.: 6.473 min  
 Delta R.T.: 0.000 min  
 Response: 459517088  
 Conc: 41.23 ng/ml

**Instrument :**  
 ECD\_L  
**ClientSampled :**  
 EXT-074-SW065-042219MSD

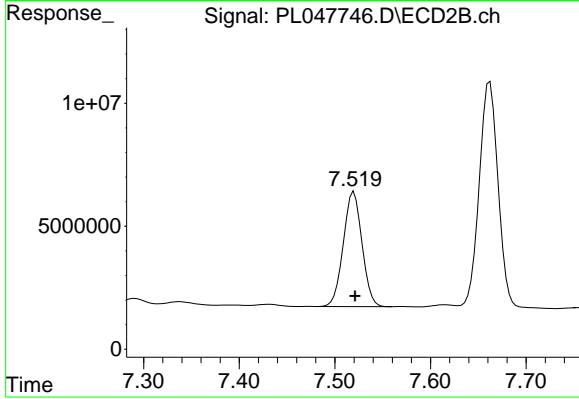
**Manual Integrations**  
**APPROVED**  
 mohammad  
 4/25/2019 2:09:05 PM



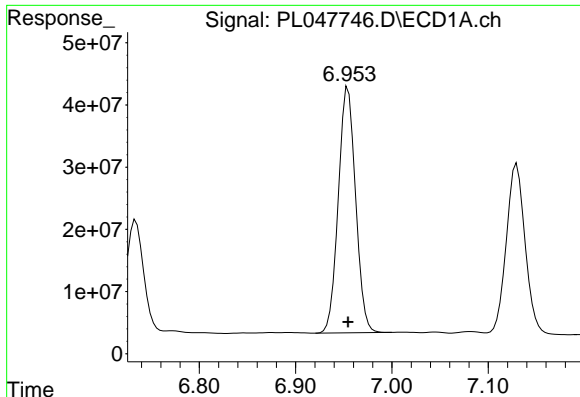
#19 Endosulfan Sulfate  
 R.T.: 7.194 min  
 Delta R.T.: 0.000 min  
 Response: 111433613  
 Conc: 40.69 ng/ml



#20 Methoxychlor  
 R.T.: 6.734 min  
 Delta R.T.: 0.000 min  
 Response: 224262828  
 Conc: 42.17 ng/ml



#20 Methoxychlor  
 R.T.: 7.520 min  
 Delta R.T.: -0.001 min  
 Response: 63633965  
 Conc: 45.38 ng/ml



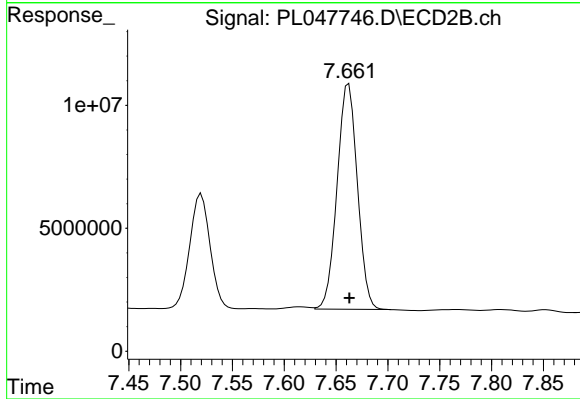
#21 Endrin ketone

R.T.: 6.955 min  
 Delta R.T.: 0.000 min  
 Response: 492177788  
 Conc: 41.50 ng/ml

Instrument :  
 ECD\_L  
 ClientSampleId :  
 EXT-074-SW065-042219MSD

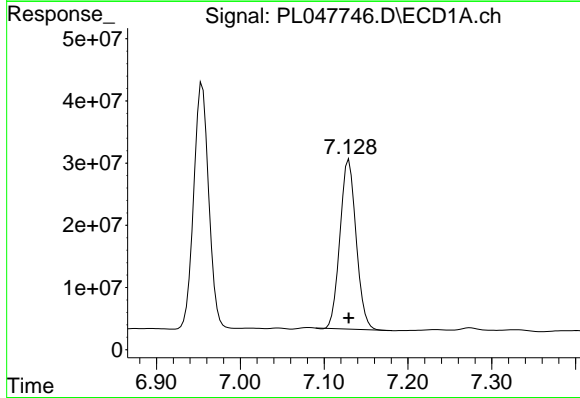
Manual Integrations  
 APPROVED

mohammad  
 4/25/2019 2:09:05 PM



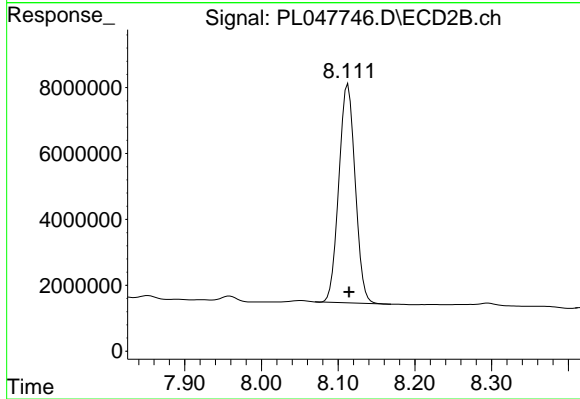
#21 Endrin ketone

R.T.: 7.662 min  
 Delta R.T.: 0.000 min  
 Response: 125039812  
 Conc: 44.47 ng/ml



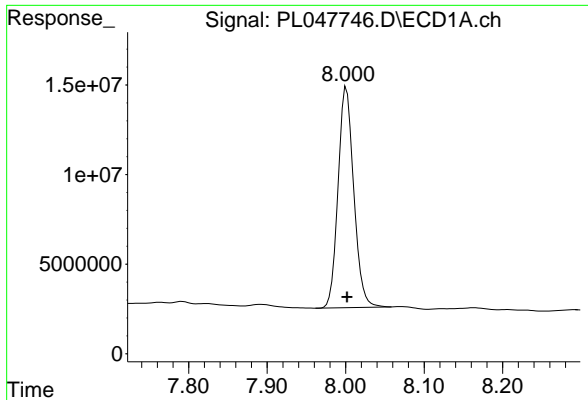
#22 Mirex

R.T.: 7.130 min  
 Delta R.T.: 0.000 min  
 Response: 364985678  
 Conc: 38.88 ng/ml



#22 Mirex

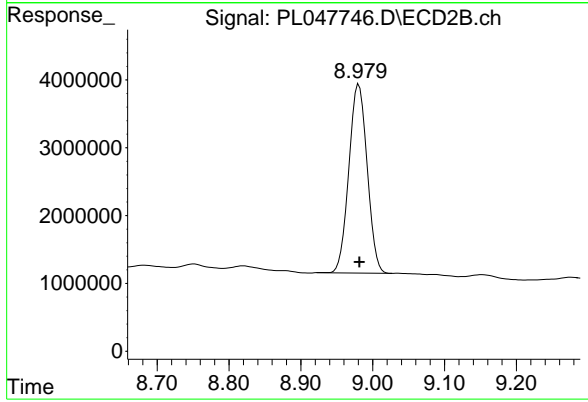
R.T.: 8.113 min  
 Delta R.T.: -0.001 min  
 Response: 98271017  
 Conc: 42.23 ng/ml



#28 Decachlorobiphenyl  
R.T.: 8.001 min  
Delta R.T.: 0.000 min  
Response: 171363137  
Conc: 15.31 ng/ml

**Instrument :**  
ECD\_L  
**ClientSampled :**  
EXT-074-SW065-042219MSD

**Manual Integrations**  
**APPROVED**  
mohammad  
4/25/2019 2:09:05 PM



#28 Decachlorobiphenyl  
R.T.: 8.981 min  
Delta R.T.: 0.000 min  
Response: 49240703  
Conc: 17.25 ng/ml