

Data Path : Z:\pestpcbsrv\HPCHEM1\ECD_L\Data\PL042424\
 Data File : PL089163.D
 Signal(s) : Signal #1: ECD1A.ch Signal #2: ECD2B.ch
 Acq On : 24 Apr 2024 13:09
 Operator : AR\AJ
 Sample : PB160475BS
 Misc :
 ALS Vial : 6 Sample Multiplier: 1

Instrument :
 ECD_L
 ClientSampleId :
 PB160475BS

Integration File signal 1: autoint1.e
 Integration File signal 2: autoint2.e
 Quant Time: Apr 25 01:27:36 2024
 Quant Method : Z:\pestpcbsrv\HPCHEM1\ECD_L\methods\PL041524.M
 Quant Title : GC Extractables
 QLast Update : Mon Apr 15 18:43:22 2024
 Response via : Initial Calibration
 Integrator: ChemStation

Volume Inj. : 1 µl
 Signal #1 Phase : ZB-MR2 Signal #2 Phase: ZB-MR1
 Signal #1 Info : 30M x 0.32mm x0.2 Signal #2 Info : 30M x 0.32mm x0.5µm

Compound	RT#1	RT#2	Resp#1	Resp#2	ng/ml	ng/ml

System Monitoring Compounds						
1) SA Tetrachlo...	3.550	2.796	39607555	23921038	18.636	17.947
2) SA Decachlor...	9.064	7.950	25899006	24981884	20.333	18.656
Target Compounds						
2) A alpha-BHC	4.006	3.301	127.9E6	88016268	42.769	44.486
3) MA gamma-BHC...	4.338	3.632	121.7E6	84160757	42.180	43.751
4) MA Heptachlor	4.929	3.975	110.0E6	81524350	44.199	45.366
5) MB Aldrin	5.270	4.256	107.7E6	78857618	41.513	42.988
6) B beta-BHC	4.533	3.930	56736422	37678416	42.281	45.083
7) B delta-BHC	4.780	4.161	113.0E6	80570178	42.242	44.130
8) B Heptachlo...	5.696	4.759	100.5E6	73926408	42.590	44.516
9) A Endosulfan I	6.081	5.129	95769871	69471589	43.796	46.224
10) B gamma-Chl...	5.951	5.009	101.4E6	76882431	44.088	46.867
11) B alpha-Chl...	6.031	5.073	100.4E6	76730875	43.843	46.399
12) B 4,4'-DDE	6.202	5.262	90526950	68522728	45.045	46.598
13) MA Dieldrin	6.356	5.394	99693629	75014144	44.207	45.889
14) MA Endrin	6.585	5.670	81815389	66086168	43.533	45.472
15) B Endosulfa...	6.803	5.963	86275948	66617705	44.789	46.597
16) A 4,4'-DDD	6.718	5.817	75460313	58896469	46.815	48.635
17) MA 4,4'-DDT	7.032	6.069	81380536	61358185	44.660	46.811
18) B Endrin al...	6.933	6.143	65575373	49841614	44.804	45.353
19) B Endosulfa...	7.167	6.366	79444390	63869341	46.274	47.249
20) A Methoxychlor	7.507	6.645	42415672	34062103	48.139	45.573
21) B Endrin ke...	7.651	6.873	88370738	74566475	45.823	47.112
22) Mirex	8.126	7.056	68426132	61391456	46.590	46.434
23) Chlordane-1	0.000	3.805	0	10321	N.D.	0.201 #
24) Chlordane-2	5.270f	4.393	107.7E6	529986	1140.704	8.160 #
25) Chlordane-3	5.951	5.009	101.4E6	76882431	314.453	445.148 #
26) Chlordane-4	6.031	5.073	100.4E6	76730875	253.899	473.081 #
27) Chlordane-5	6.868	5.744	265218	9946	3.503	0.197 #

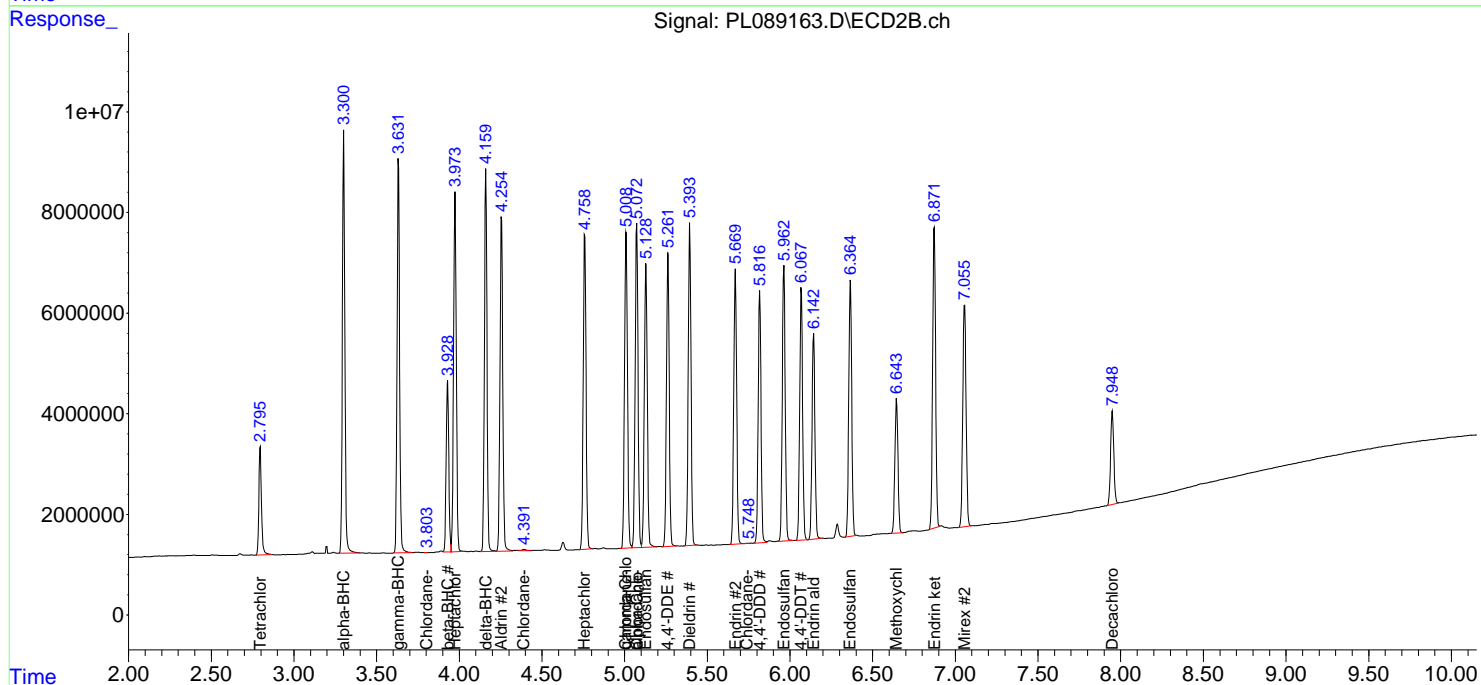
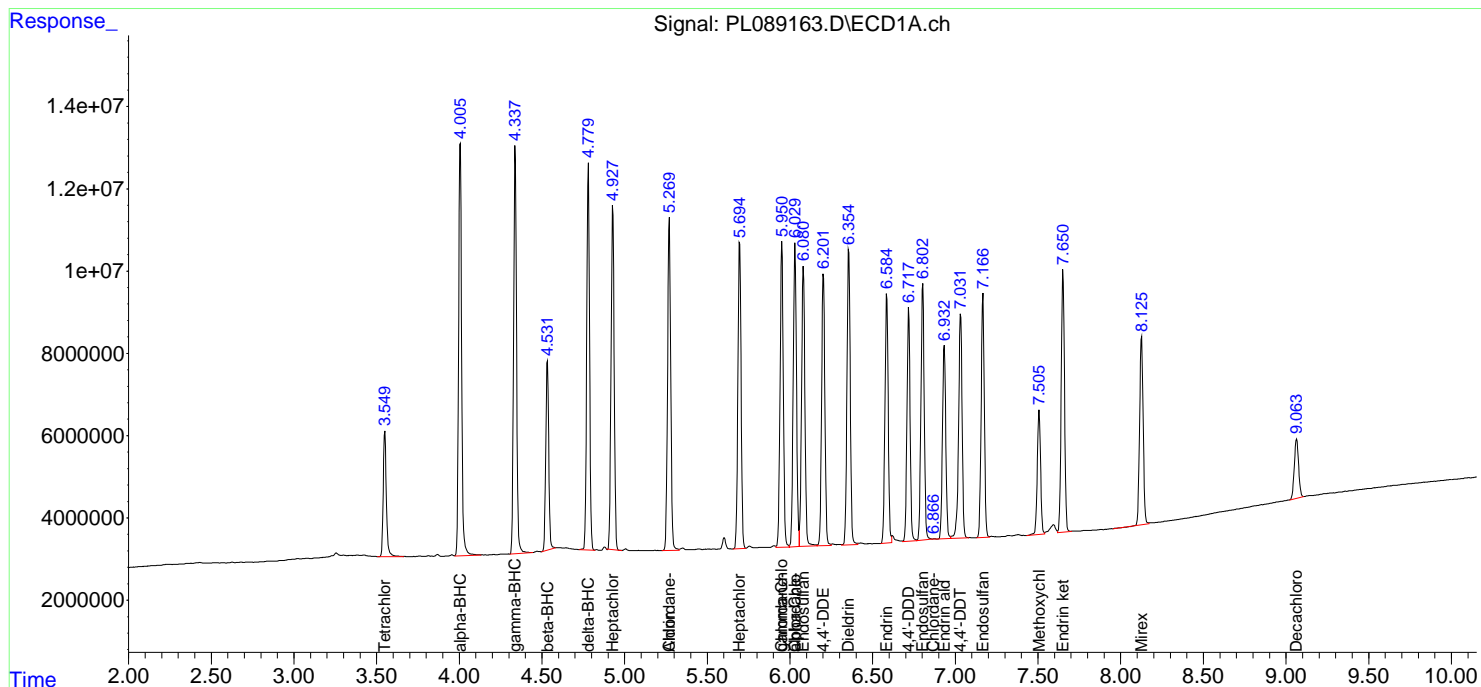
(f)=RT Delta > 1/2 Window (#)=Amounts differ by > 25% (m)=manual int.

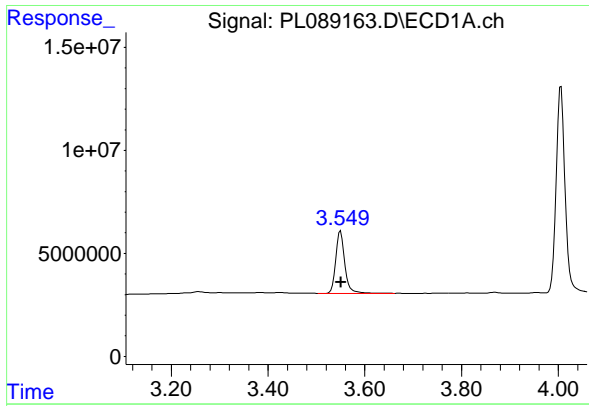
Data Path : Z:\pestpcbsrv\HPCHEM1\ECD_L\Data\PL042424\
 Data File : PL089163.D
 Signal(s) : Signal #1: ECD1A.ch Signal #2: ECD2B.ch
 Acq On : 24 Apr 2024 13:09
 Operator : AR\AJ
 Sample : PB160475BS
 Misc :
 ALS Vial : 6 Sample Multiplier: 1

Instrument :
 ECD_L
 ClientSampleId :
 PB160475BS

Integration File signal 1: autoint1.e
 Integration File signal 2: autoint2.e
 Quant Time: Apr 25 01:27:36 2024
 Quant Method : Z:\pestpcbsrv\HPCHEM1\ECD_L\methods\PL041524.M
 Quant Title : GC Extractables
 QLast Update : Mon Apr 15 18:43:22 2024
 Response via : Initial Calibration
 Integrator: ChemStation

Volume Inj. : 1 µl
 Signal #1 Phase : ZB-MR2 Signal #2 Phase: ZB-MR1
 Signal #1 Info : 30M x 0.32mm x0.2 Signal #2 Info : 30M x 0.32mm x0.5µm

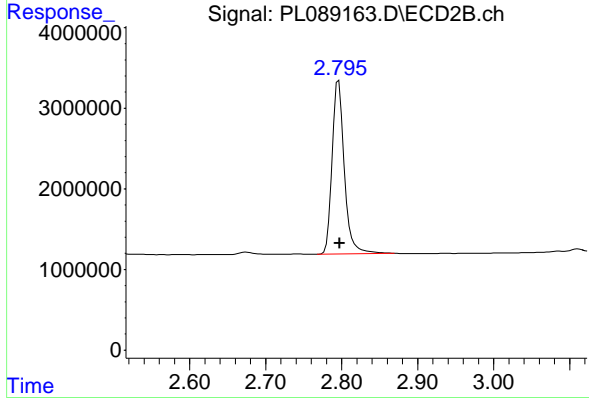




#1 Tetrachloro-m-xylene

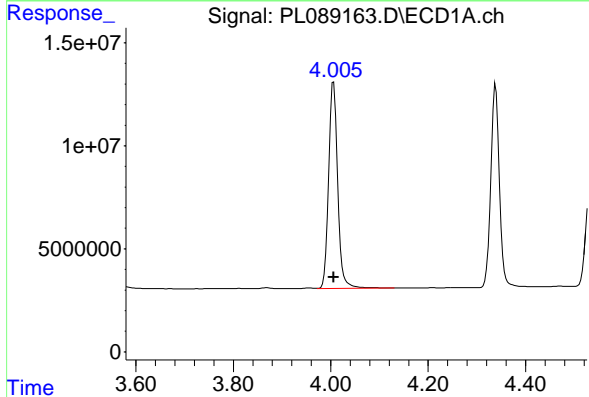
R.T.: 3.550 min
 Delta R.T.: -0.001 min
 Response: 39607555
 Conc: 18.64 ng/ml

Instrument :
 ECD_L
 ClientSampleId :
 PB160475BS



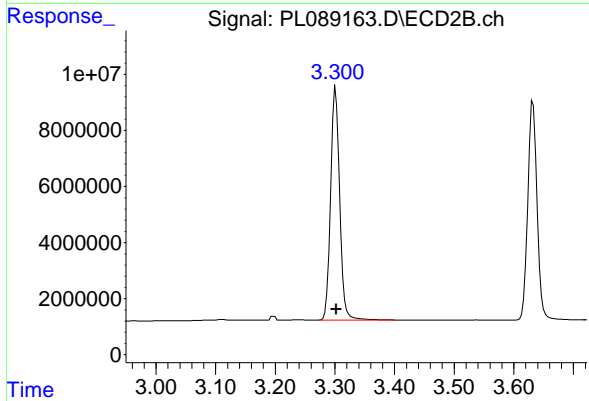
#1 Tetrachloro-m-xylene

R.T.: 2.796 min
 Delta R.T.: -0.001 min
 Response: 23921038
 Conc: 17.95 ng/ml



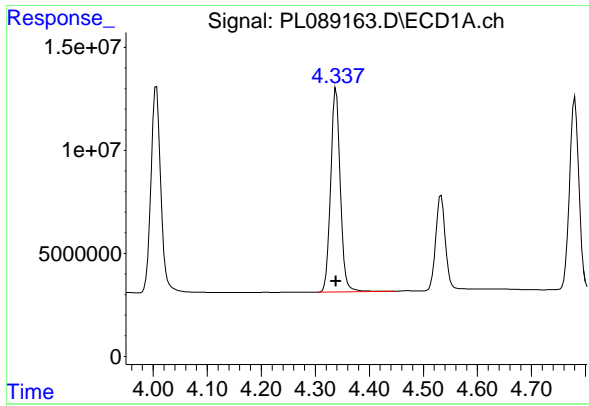
#2 alpha-BHC

R.T.: 4.006 min
 Delta R.T.: 0.000 min
 Response: 127880478
 Conc: 42.77 ng/ml



#2 alpha-BHC

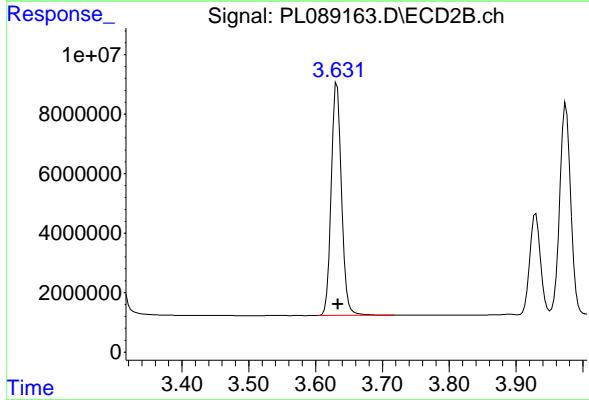
R.T.: 3.301 min
 Delta R.T.: -0.001 min
 Response: 88016268
 Conc: 44.49 ng/ml



#3 gamma-BHC (Lindane)

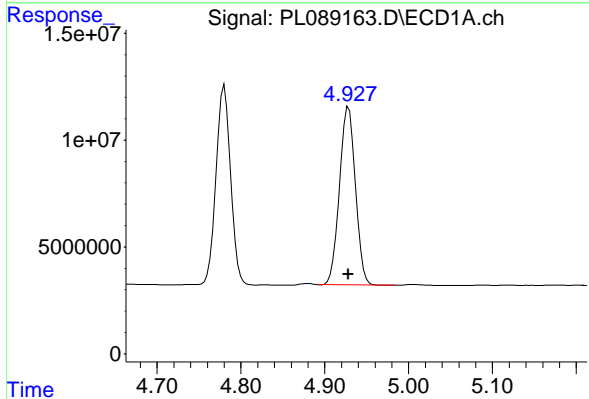
R.T.: 4.338 min
 Delta R.T.: 0.000 min
 Response: 121697410
 Conc: 42.18 ng/ml

Instrument :
 ECD_L
 ClientSampleId :
 PB160475BS



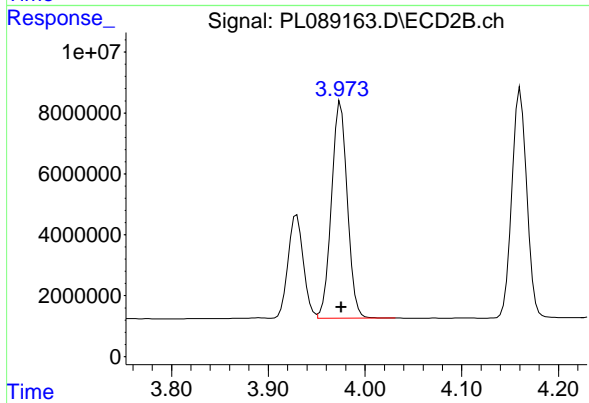
#3 gamma-BHC (Lindane)

R.T.: 3.632 min
 Delta R.T.: -0.001 min
 Response: 84160757
 Conc: 43.75 ng/ml



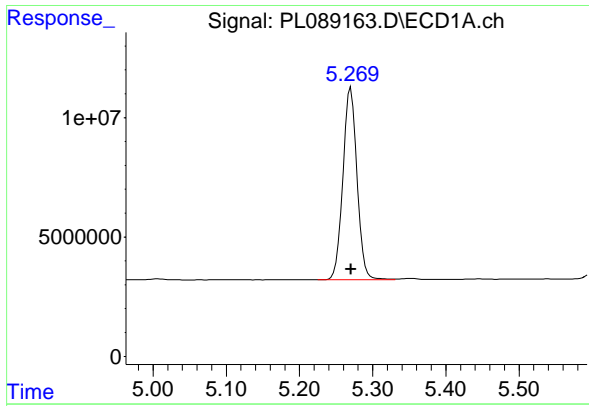
#4 Heptachlor

R.T.: 4.929 min
 Delta R.T.: 0.000 min
 Response: 109976084
 Conc: 44.20 ng/ml



#4 Heptachlor

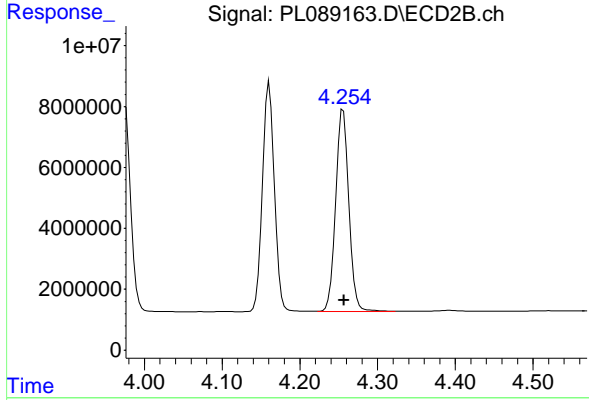
R.T.: 3.975 min
 Delta R.T.: 0.000 min
 Response: 81524350
 Conc: 45.37 ng/ml



#5 Aldrin

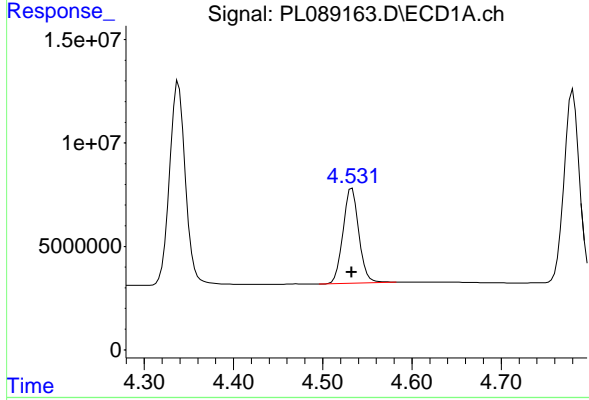
R.T.: 5.270 min
 Delta R.T.: 0.000 min
 Response: 107748493
 Conc: 41.51 ng/ml

Instrument :
 ECD_L
 ClientSampleId :
 PB160475BS



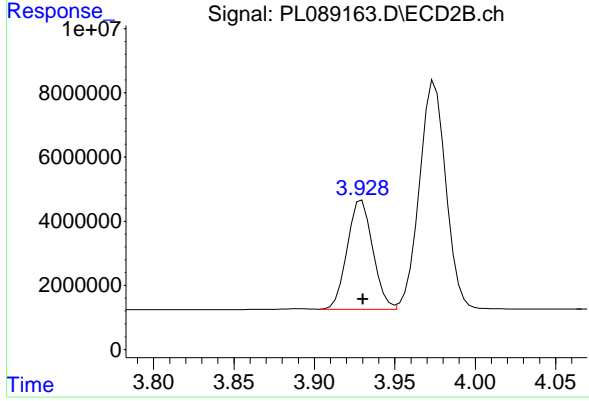
#5 Aldrin

R.T.: 4.256 min
 Delta R.T.: -0.001 min
 Response: 78857618
 Conc: 42.99 ng/ml



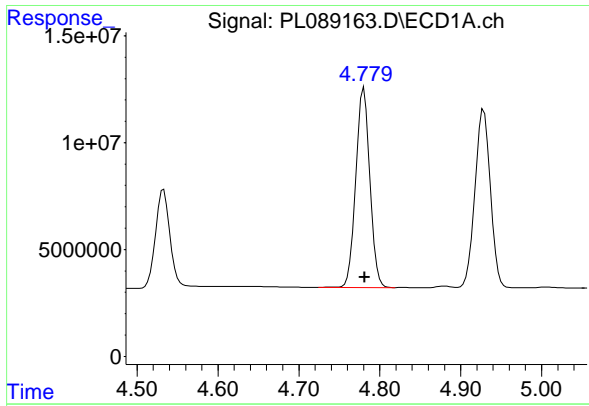
#6 beta-BHC

R.T.: 4.533 min
 Delta R.T.: 0.000 min
 Response: 56736422
 Conc: 42.28 ng/ml



#6 beta-BHC

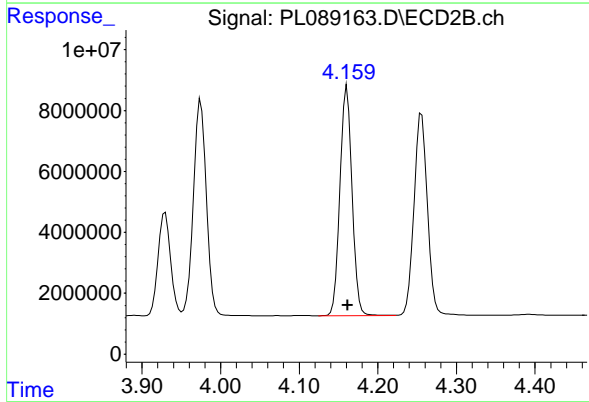
R.T.: 3.930 min
 Delta R.T.: 0.000 min
 Response: 37678416
 Conc: 45.08 ng/ml



#7 delta-BHC

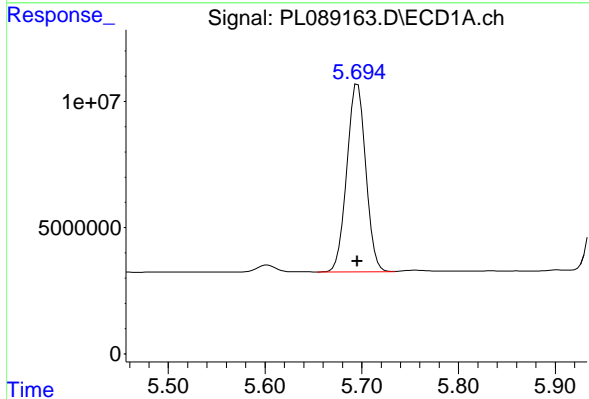
R.T.: 4.780 min
 Delta R.T.: 0.000 min
 Response: 112965928
 Conc: 42.24 ng/ml

Instrument :
 ECD_L
 ClientSampleId :
 PB160475BS



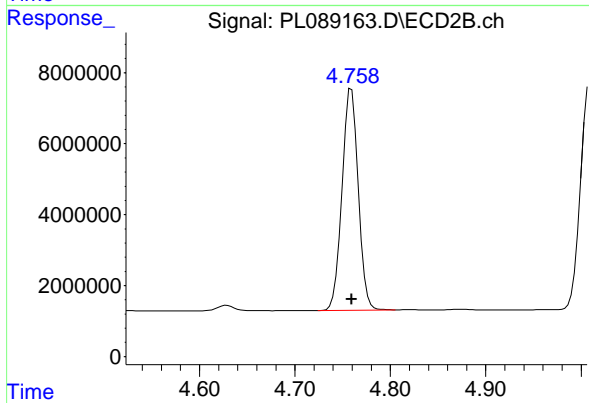
#7 delta-BHC

R.T.: 4.161 min
 Delta R.T.: 0.000 min
 Response: 80570178
 Conc: 44.13 ng/ml



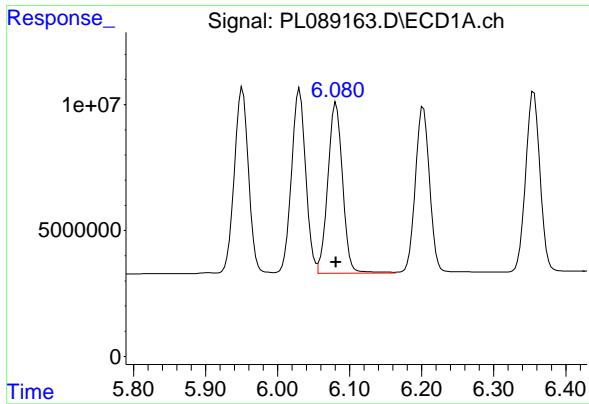
#8 Heptachlor epoxide

R.T.: 5.696 min
 Delta R.T.: 0.000 min
 Response: 100494822
 Conc: 42.59 ng/ml



#8 Heptachlor epoxide

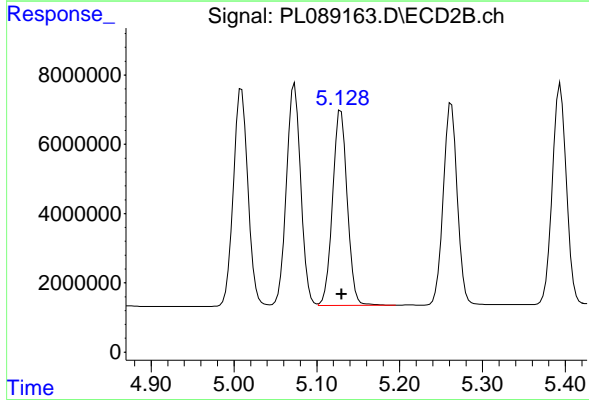
R.T.: 4.759 min
 Delta R.T.: 0.000 min
 Response: 73926408
 Conc: 44.52 ng/ml



#9 Endosulfan I

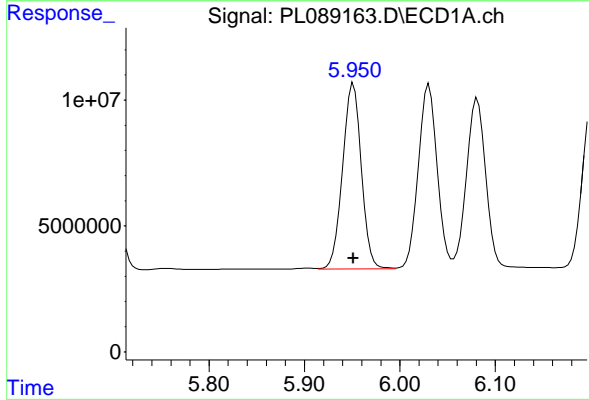
R.T.: 6.081 min
 Delta R.T.: 0.000 min
 Response: 95769871
 Conc: 43.80 ng/ml

Instrument : ECD_L
 ClientSampleId : PB160475BS



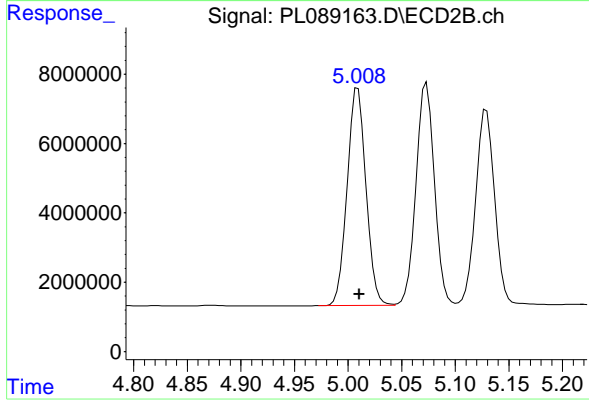
#9 Endosulfan I

R.T.: 5.129 min
 Delta R.T.: 0.000 min
 Response: 69471589
 Conc: 46.22 ng/ml



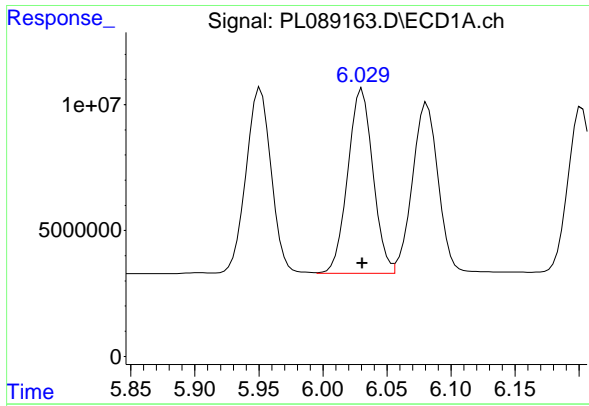
#10 gamma-Chlordane

R.T.: 5.951 min
 Delta R.T.: 0.000 min
 Response: 101350877
 Conc: 44.09 ng/ml



#10 gamma-Chlordane

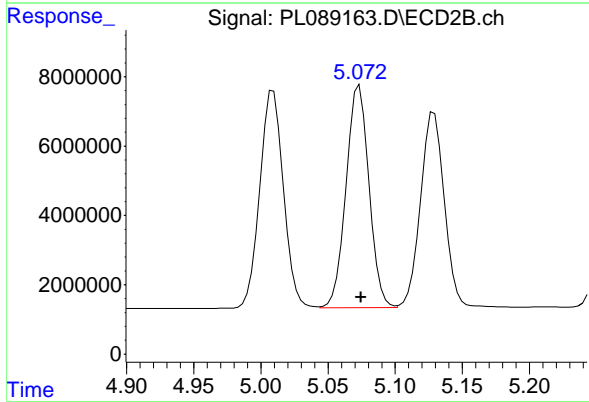
R.T.: 5.009 min
 Delta R.T.: -0.001 min
 Response: 76882431
 Conc: 46.87 ng/ml



#11 alpha-Chlordane

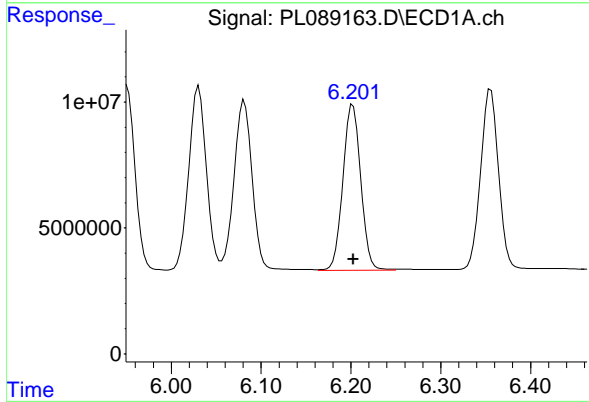
R.T.: 6.031 min
 Delta R.T.: 0.000 min
 Response: 100372773
 Conc: 43.84 ng/ml

Instrument :
 ECD_L
 ClientSampleId :
 PB160475BS



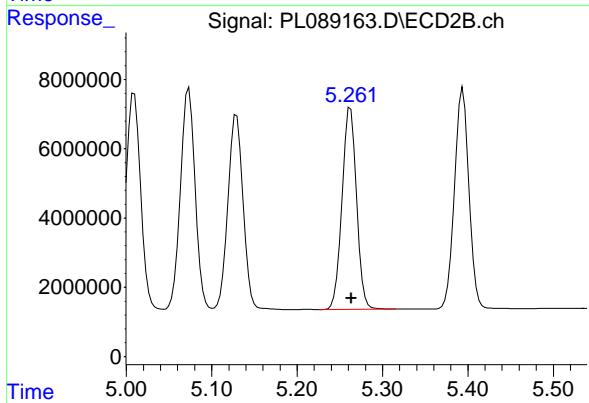
#11 alpha-Chlordane

R.T.: 5.073 min
 Delta R.T.: -0.001 min
 Response: 76730875
 Conc: 46.40 ng/ml



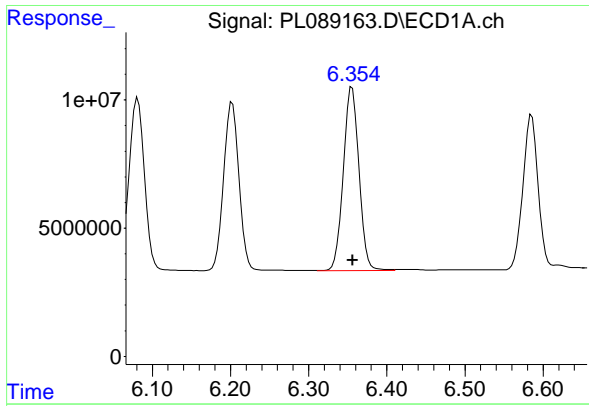
#12 4,4'-DDE

R.T.: 6.202 min
 Delta R.T.: 0.000 min
 Response: 90526950
 Conc: 45.04 ng/ml



#12 4,4'-DDE

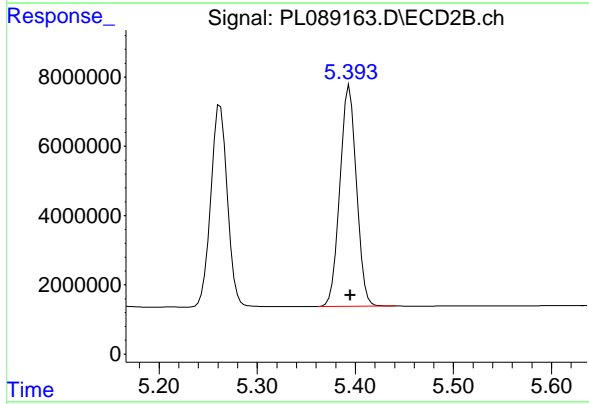
R.T.: 5.262 min
 Delta R.T.: -0.001 min
 Response: 68522728
 Conc: 46.60 ng/ml



#13 Dieldrin

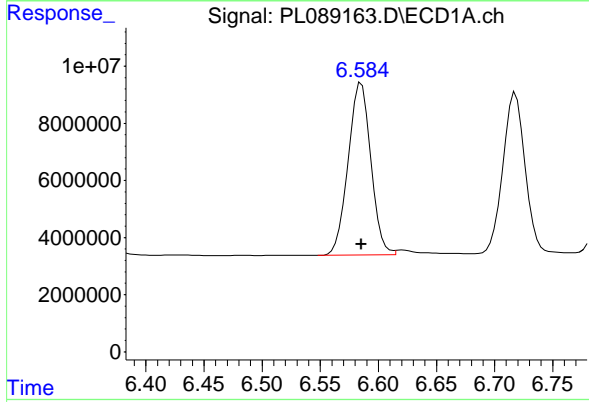
R.T.: 6.356 min
 Delta R.T.: 0.000 min
 Response: 99693629
 Conc: 44.21 ng/ml

Instrument :
 ECD_L
 ClientSampleId :
 PB160475BS



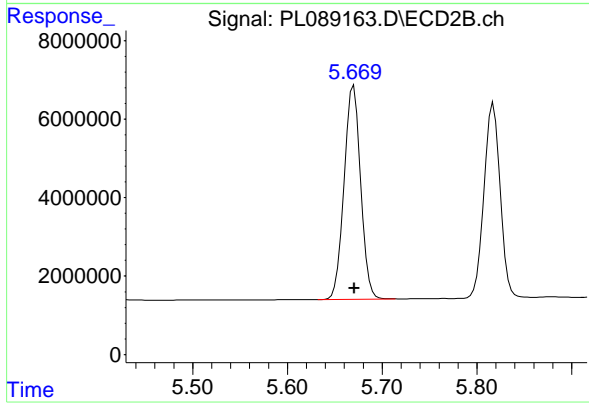
#13 Dieldrin

R.T.: 5.394 min
 Delta R.T.: 0.000 min
 Response: 75014144
 Conc: 45.89 ng/ml



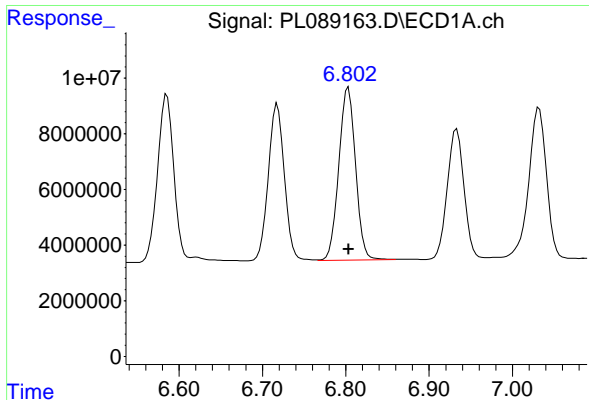
#14 Endrin

R.T.: 6.585 min
 Delta R.T.: 0.000 min
 Response: 81815389
 Conc: 43.53 ng/ml



#14 Endrin

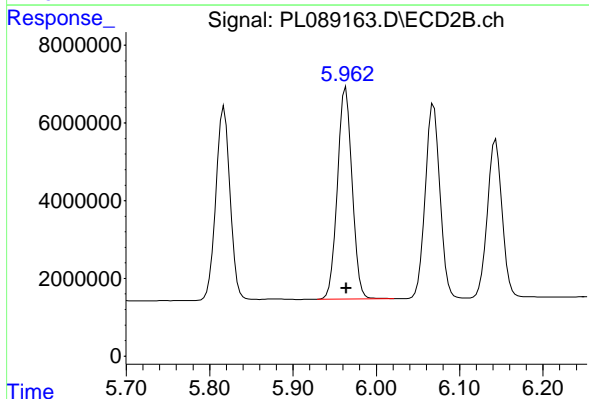
R.T.: 5.670 min
 Delta R.T.: 0.000 min
 Response: 66086168
 Conc: 45.47 ng/ml



#15 Endosulfan II

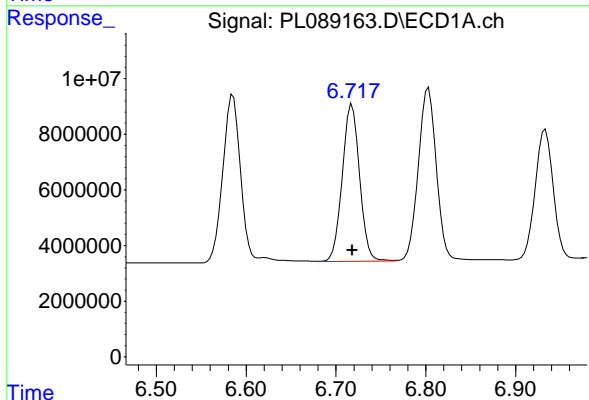
R.T.: 6.803 min
 Delta R.T.: 0.000 min
 Response: 86275948
 Conc: 44.79 ng/ml

Instrument :
 ECD_L
 ClientSampleId :
 PB160475BS



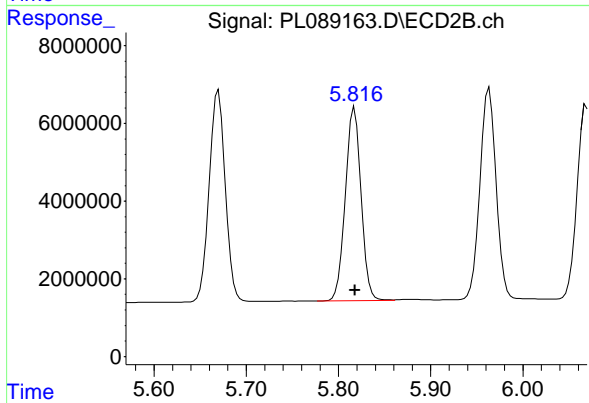
#15 Endosulfan II

R.T.: 5.963 min
 Delta R.T.: 0.000 min
 Response: 66617705
 Conc: 46.60 ng/ml



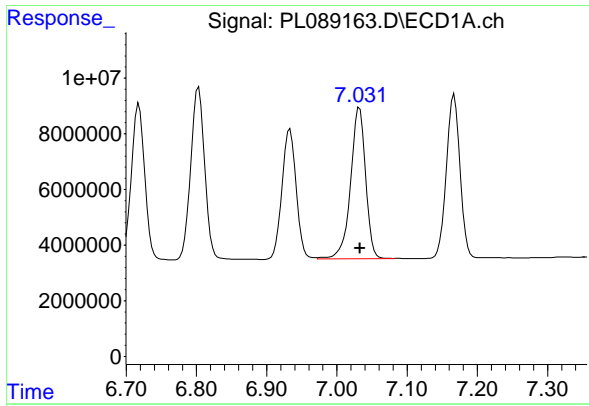
#16 4,4'-DDD

R.T.: 6.718 min
 Delta R.T.: 0.000 min
 Response: 75460313
 Conc: 46.81 ng/ml



#16 4,4'-DDD

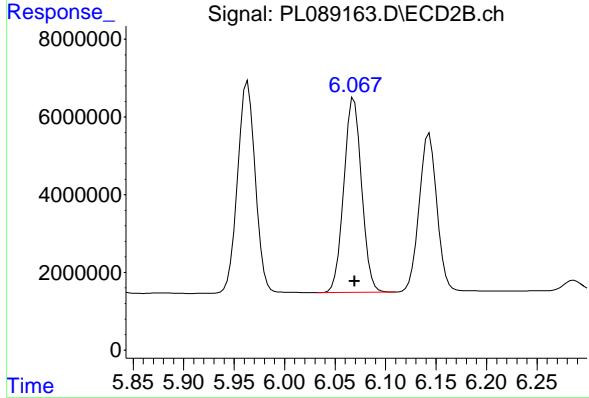
R.T.: 5.817 min
 Delta R.T.: 0.000 min
 Response: 58896469
 Conc: 48.64 ng/ml



#17 4,4' -DDT

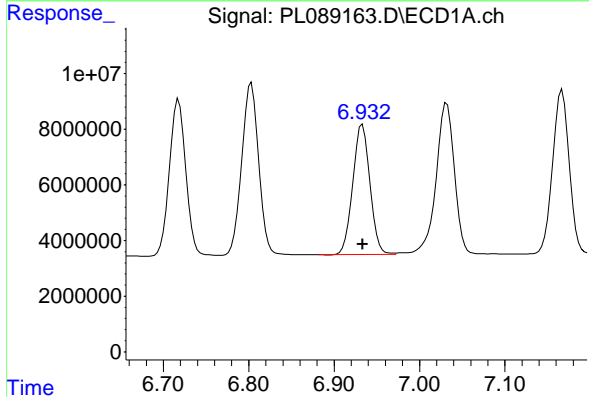
R.T.: 7.032 min
 Delta R.T.: 0.000 min
 Response: 81380536
 Conc: 44.66 ng/ml

Instrument :
 ECD_L
 ClientSampleId :
 PB160475BS



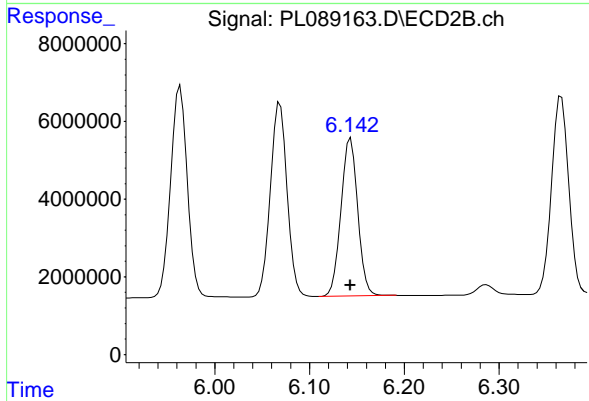
#17 4,4' -DDT

R.T.: 6.069 min
 Delta R.T.: 0.000 min
 Response: 61358185
 Conc: 46.81 ng/ml



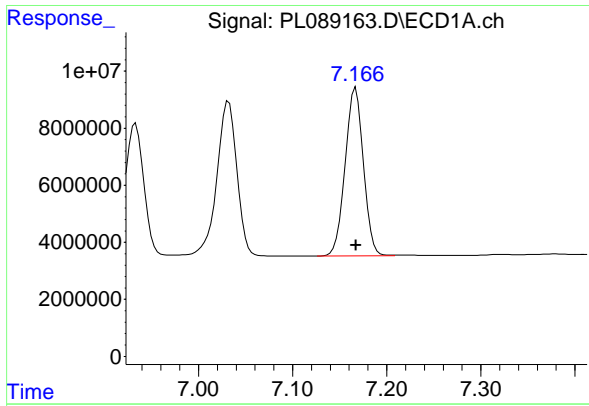
#18 Endrin aldehyde

R.T.: 6.933 min
 Delta R.T.: 0.000 min
 Response: 65575373
 Conc: 44.80 ng/ml



#18 Endrin aldehyde

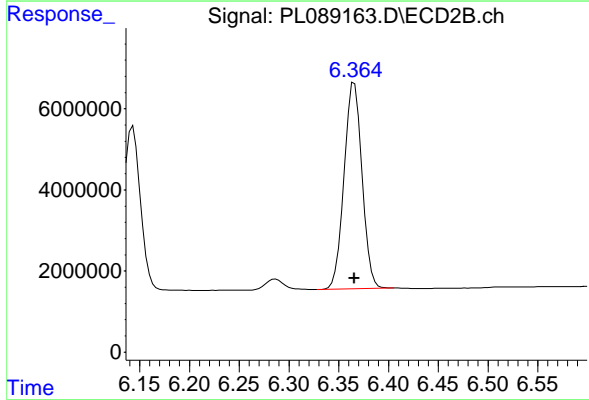
R.T.: 6.143 min
 Delta R.T.: 0.000 min
 Response: 49841614
 Conc: 45.35 ng/ml



#19 Endosulfan Sulfate

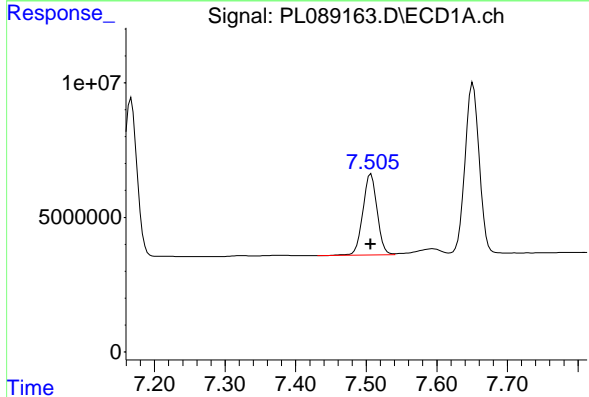
R.T.: 7.167 min
 Delta R.T.: 0.000 min
 Response: 79444390
 Conc: 46.27 ng/ml

Instrument :
 ECD_L
 ClientSampleId :
 PB160475BS



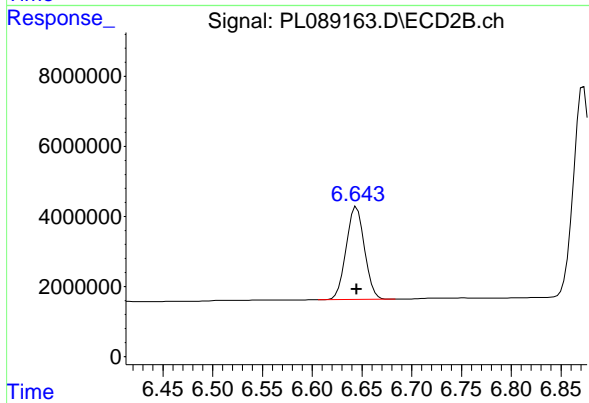
#19 Endosulfan Sulfate

R.T.: 6.366 min
 Delta R.T.: 0.000 min
 Response: 63869341
 Conc: 47.25 ng/ml



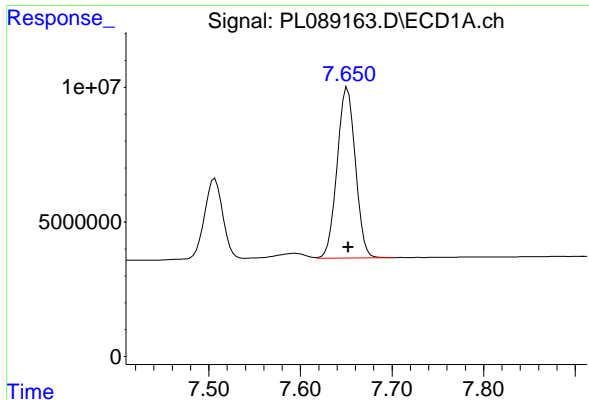
#20 Methoxychlor

R.T.: 7.507 min
 Delta R.T.: 0.000 min
 Response: 42415672
 Conc: 48.14 ng/ml



#20 Methoxychlor

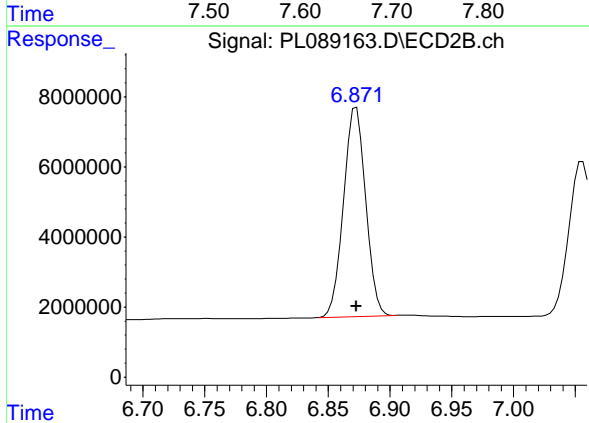
R.T.: 6.645 min
 Delta R.T.: 0.000 min
 Response: 34062103
 Conc: 45.57 ng/ml



#21 Endrin ketone

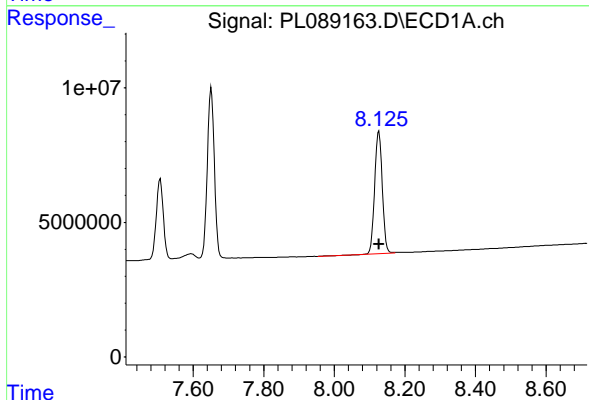
R.T.: 7.651 min
 Delta R.T.: -0.001 min
 Response: 88370738
 Conc: 45.82 ng/ml

Instrument :
 ECD_L
 ClientSampleId :
 PB160475BS



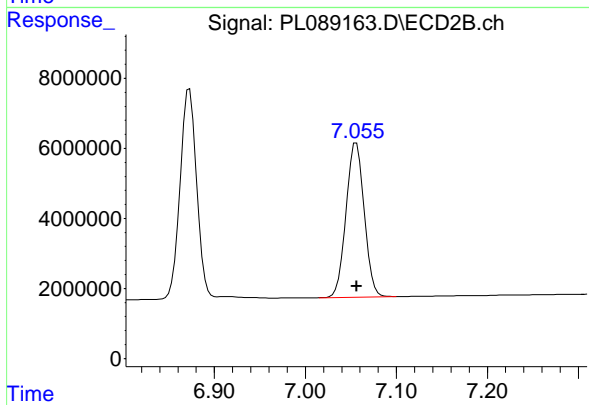
#21 Endrin ketone

R.T.: 6.873 min
 Delta R.T.: 0.000 min
 Response: 74566475
 Conc: 47.11 ng/ml



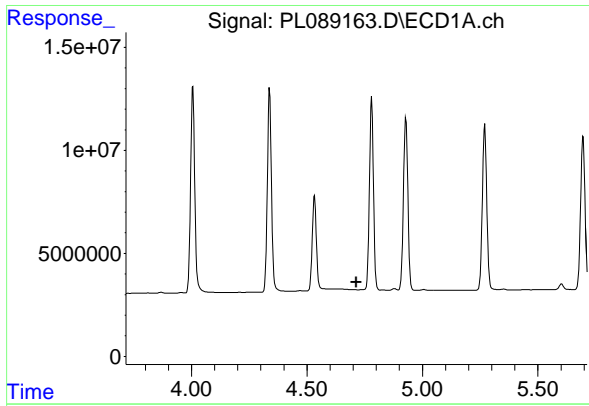
#22 Mirex

R.T.: 8.126 min
 Delta R.T.: 0.000 min
 Response: 68426132
 Conc: 46.59 ng/ml



#22 Mirex

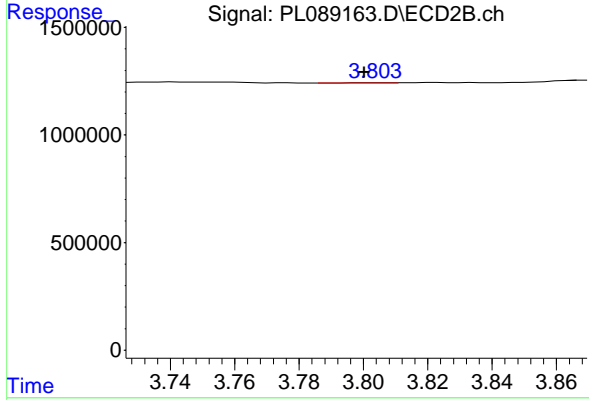
R.T.: 7.056 min
 Delta R.T.: 0.000 min
 Response: 61391456
 Conc: 46.43 ng/ml



#23 Chlordane-1

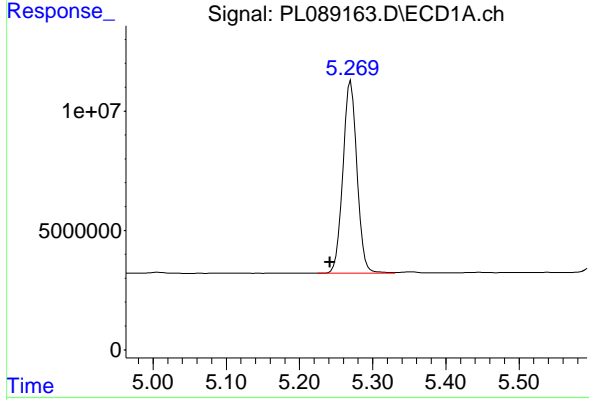
R.T.: 0.000 min
 Exp R.T.: 4.713 min
 Response: 0
 Conc: N.D.

Instrument :
 ECD_L
 ClientSampleId :
 PB160475BS



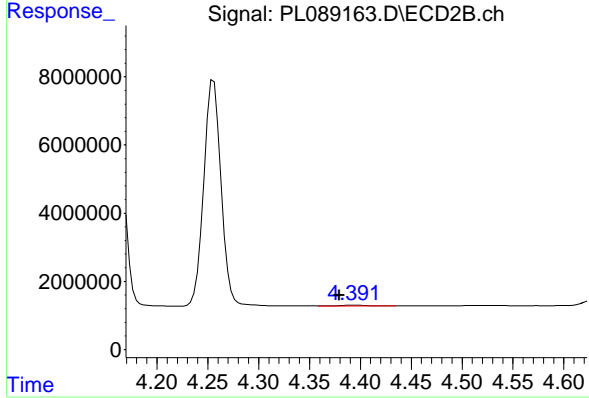
#23 Chlordane-1

R.T.: 3.805 min
 Delta R.T.: 0.004 min
 Response: 10321
 Conc: 0.20 ng/ml



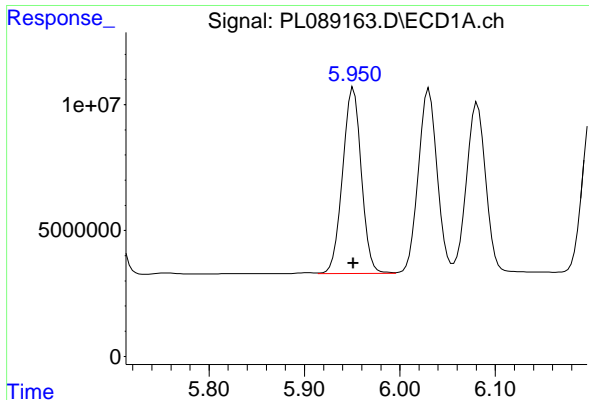
#24 Chlordane-2

R.T.: 5.270 min
 Delta R.T.: 0.029 min
 Response: 107748493
 Conc: 1140.70 ng/ml



#24 Chlordane-2

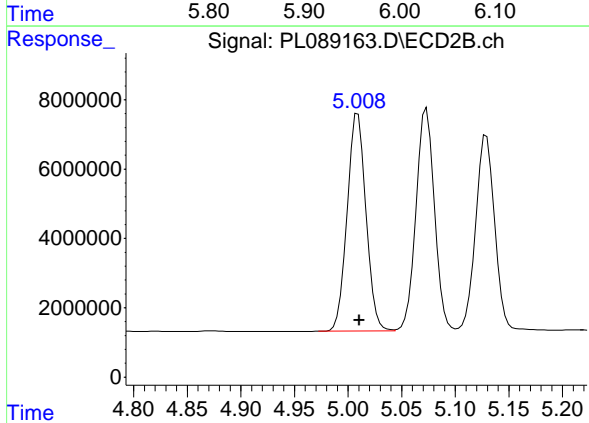
R.T.: 4.393 min
 Delta R.T.: 0.014 min
 Response: 529986
 Conc: 8.16 ng/ml



#25 Chlordane-3

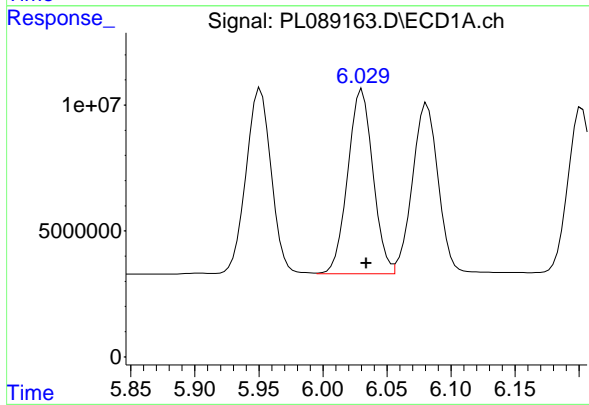
R.T.: 5.951 min
 Delta R.T.: 0.000 min
 Response: 101350877
 Conc: 314.45 ng/ml

Instrument :
 ECD_L
 ClientSampleId :
 PB160475BS



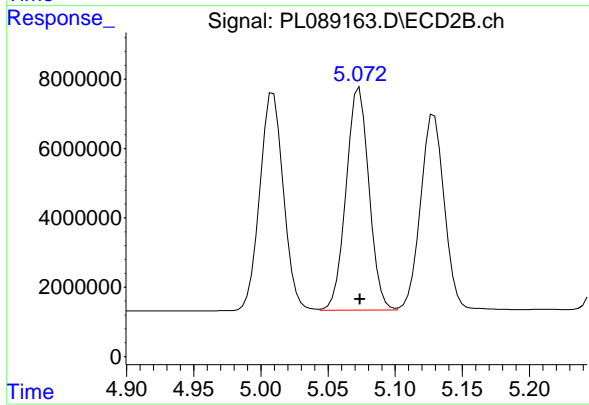
#25 Chlordane-3

R.T.: 5.009 min
 Delta R.T.: -0.001 min
 Response: 76882431
 Conc: 445.15 ng/ml



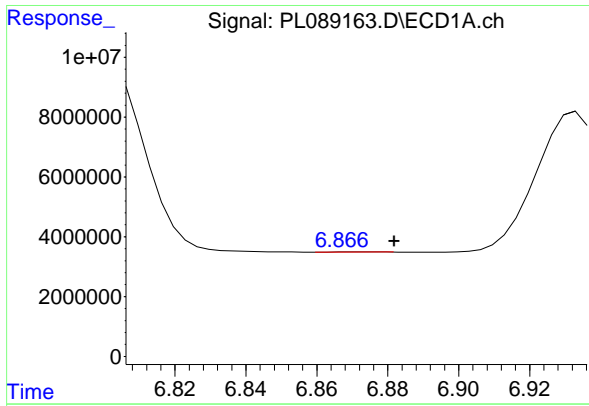
#26 Chlordane-4

R.T.: 6.031 min
 Delta R.T.: -0.003 min
 Response: 100372773
 Conc: 253.90 ng/ml



#26 Chlordane-4

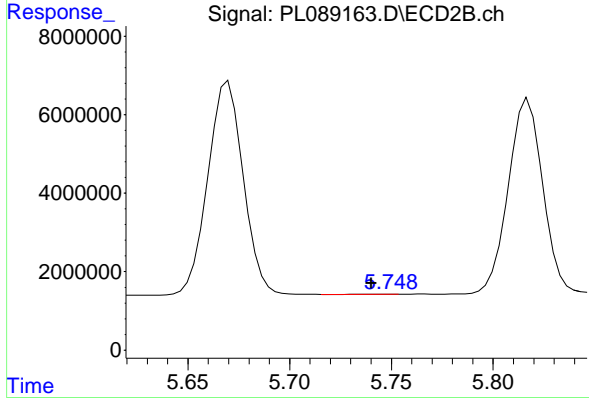
R.T.: 5.073 min
 Delta R.T.: 0.000 min
 Response: 76730875
 Conc: 473.08 ng/ml



#27 Chlordane-5

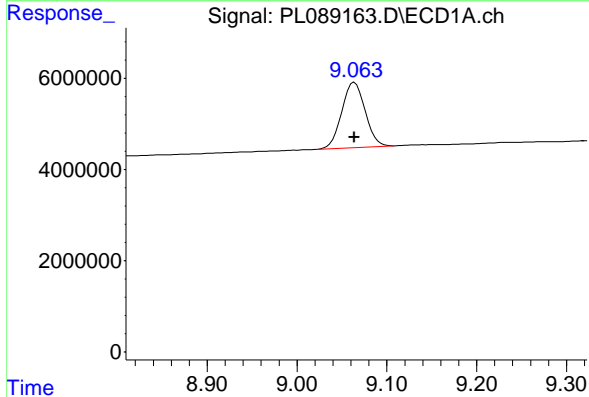
R.T.: 6.868 min
 Delta R.T.: -0.014 min
 Response: 265218
 Conc: 3.50 ng/ml

Instrument :
 ECD_L
 ClientSampleId :
 PB160475BS



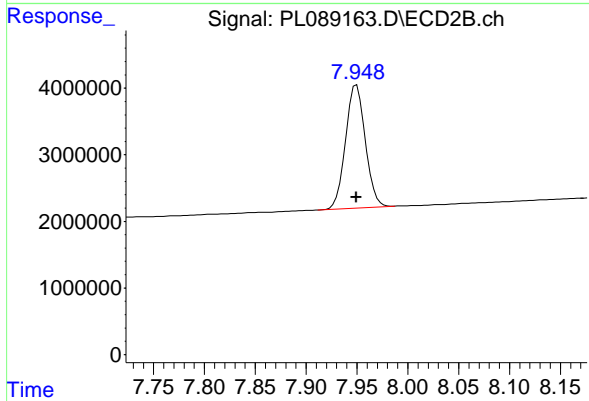
#27 Chlordane-5

R.T.: 5.744 min
 Delta R.T.: 0.004 min
 Response: 9946
 Conc: 0.20 ng/ml



#28 Decachlorobiphenyl

R.T.: 9.064 min
 Delta R.T.: 0.000 min
 Response: 25899006
 Conc: 20.33 ng/ml



#28 Decachlorobiphenyl

R.T.: 7.950 min
 Delta R.T.: 0.000 min
 Response: 24981884
 Conc: 18.66 ng/ml