

Data Path : Z:\pestpcbsrv\HPCHEM1\ECD_L\Data\PL042425\
 Data File : PL095364.D
 Signal(s) : Signal #1: ECD1A.ch Signal #2: ECD2B.ch
 Acq On : 24 Apr 2025 12:36
 Operator : AR\AJ
 Sample : PB167688BS
 Misc :
 ALS Vial : 5 Sample Multiplier: 1

Instrument :
 ECD_L
 ClientSampleId :

Integration File signal 1: autoint1.e
 Integration File signal 2: autoint2.e
 Quant Time: Apr 25 01:43:18 2025
 Quant Method : Z:\pestpcbsrv\HPCHEM1\ECD_L\methods\PL042325.M
 Quant Title : GC Extractables
 QLast Update : Wed Apr 23 16:23:18 2025
 Response via : Initial Calibration
 Integrator: ChemStation

Volume Inj. : 1 µl
 Signal #1 Phase : ZB-MR2 Signal #2 Phase: ZB-MR2
 Signal #1 Info : 30M x 0.32mm x0.5 Signal #2 Info : 30M x 0.32mm x0.25µm

	Compound	RT#1	RT#2	Resp#1	Resp#2	ng/ml	ng/ml

System Monitoring Compounds							
1)	SA Tetrachlo...	3.600	2.903	68929619	59175750	21.114	18.610
28)	SA Decachlor...	9.131	8.089	58983555	54785974	21.287	18.513
Target Compounds							
2)	A alpha-BHC	4.052	3.413	261.4E6	208.5E6	52.764	46.878
3)	MA gamma-BHC...	4.384	3.747	249.8E6	205.2E6	52.767	46.646
4)	MA Heptachlor	4.982	4.102	237.2E6	195.2E6	51.846	44.804
5)	MB Aldrin	5.324	4.387	244.6E6	189.0E6	53.264	45.918
6)	B beta-BHC	4.570	4.041	108.7E6	97691827	52.555	47.061
7)	B delta-BHC	4.819	4.277	-119446892	207.0E6	N.D.	47.230
8)	B Heptachlo...	5.745	4.891	220.3E6	176.2E6	55.008	45.620
9)	A Endosulfan I	6.128	5.264	201.1E6	169.5E6	52.957	46.297
10)	B gamma-Chl...	5.999	5.144	222.2E6	187.5E6	54.471	46.270
11)	B alpha-Chl...	6.080	5.209	217.9E6	183.5E6	53.591	46.106
12)	B 4,4'-DDE	6.249	5.395	211.4E6	187.5E6	53.933	46.097
13)	MA Dieldrin	6.402	5.530	206.2E6	185.5E6	53.491	45.609
14)	MA Endrin	6.628	5.805	152.4E6	150.9E6	47.848	41.440
15)	B Endosulfa...	6.841	6.095	174.2E6	167.1E6	54.583	46.540
16)	A 4,4'-DDD	6.758	5.948	160.6E6	157.8E6	56.734	48.308
17)	MA 4,4'-DDT	7.074	6.202	141.3E6	143.6E6	49.616	41.783
18)	B Endrin al...	6.970	6.274	128.9E6	126.1E6	55.529	48.256
19)	B Endosulfa...	7.203	6.497	146.5E6	153.2E6	52.280	46.182
20)	A Methoxychlor	7.545	6.773	63868325	75716296	45.779	39.695
21)	B Endrin ke...	7.685	7.003	153.1E6	174.3E6	53.716	49.490
22)	Mirex	8.167	7.200	120.3E6	136.7E6	50.645	47.443
25)	Chlordane-3	5.999	5.144	222.2E6	187.5E6	285.272	362.966 #
26)	Chlordane-4	6.080	5.209	217.9E6	183.5E6	231.095	422.331 #
27)	Chlordane-5	0.000	6.095	0	167.1E6	N.D.	904.686 #

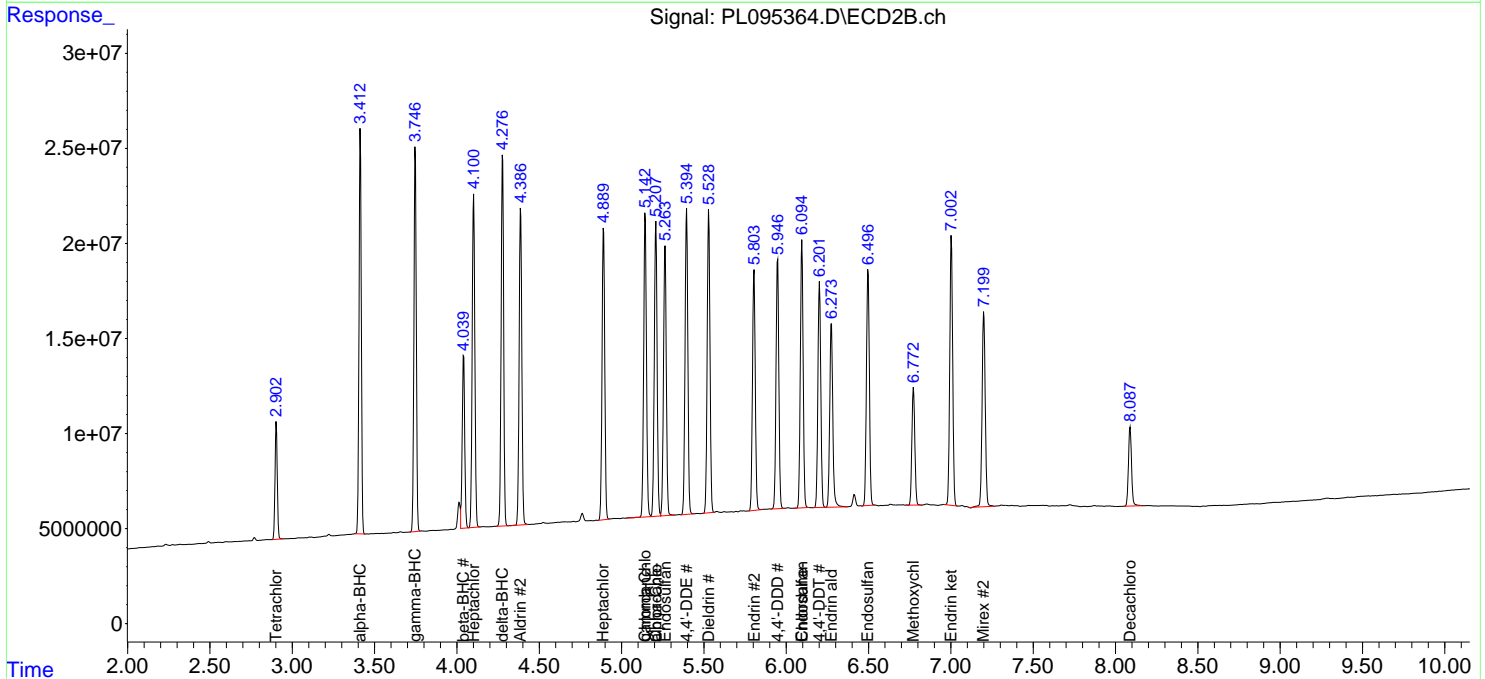
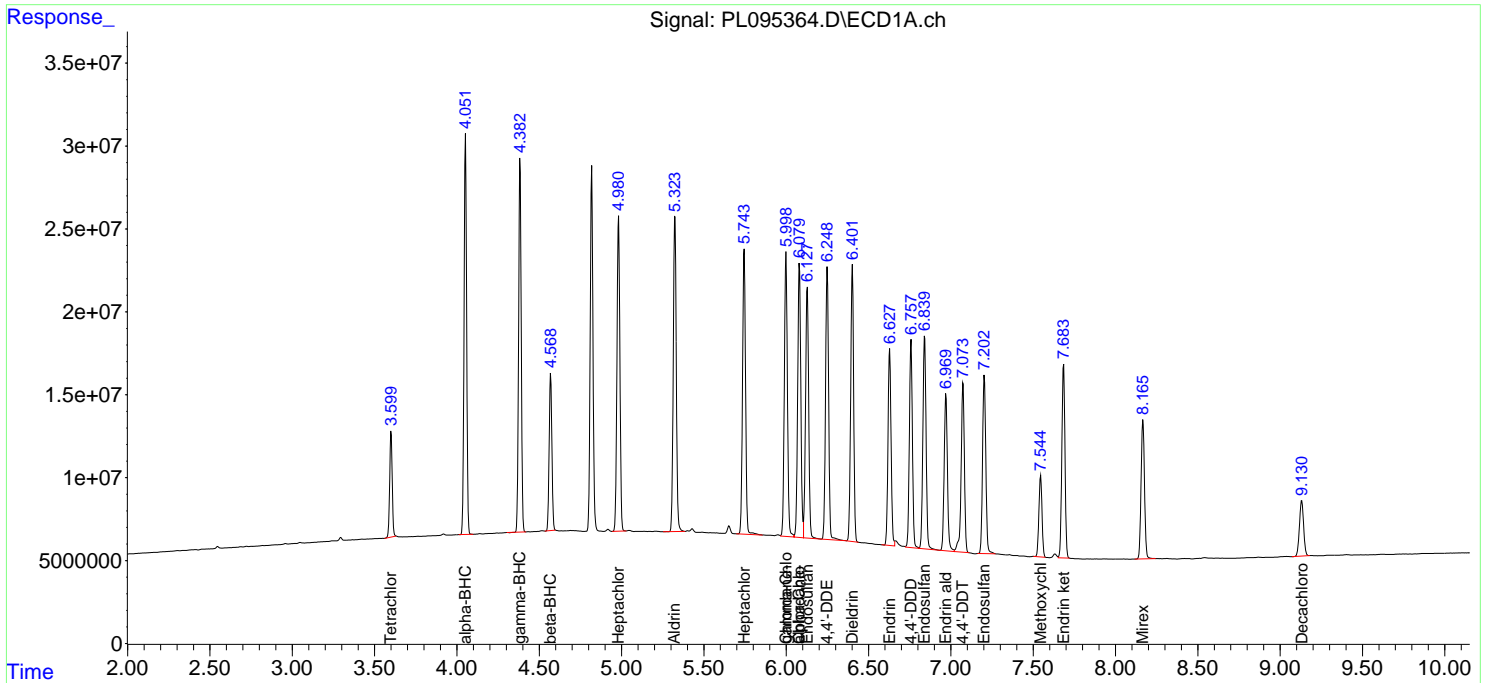
(f)=RT Delta > 1/2 Window (#)=Amounts differ by > 25% (m)=manual int.

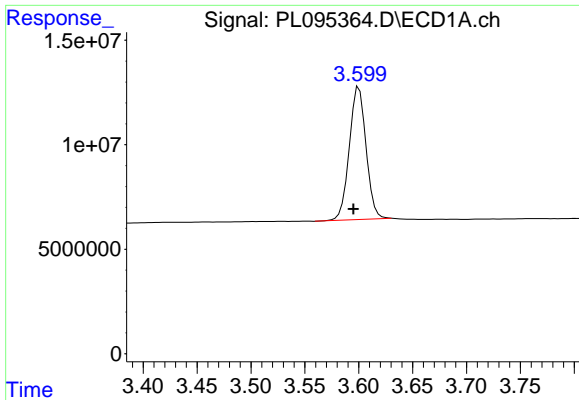
Data Path : Z:\pestpcbsrv\HPCHEM1\ECD_L\Data\PL042425\
 Data File : PL095364.D
 Signal(s) : Signal #1: ECD1A.ch Signal #2: ECD2B.ch
 Acq On : 24 Apr 2025 12:36
 Operator : AR\AJ
 Sample : PB167688BS
 Misc :
 ALS Vial : 5 Sample Multiplier: 1

Instrument :
 ECD_L
 ClientSampleId :

Integration File signal 1: autoint1.e
 Integration File signal 2: autoint2.e
 Quant Time: Apr 25 01:43:18 2025
 Quant Method : Z:\pestpcbsrv\HPCHEM1\ECD_L\methods\PL042325.M
 Quant Title : GC Extractables
 QLast Update : Wed Apr 23 16:23:18 2025
 Response via : Initial Calibration
 Integrator: ChemStation

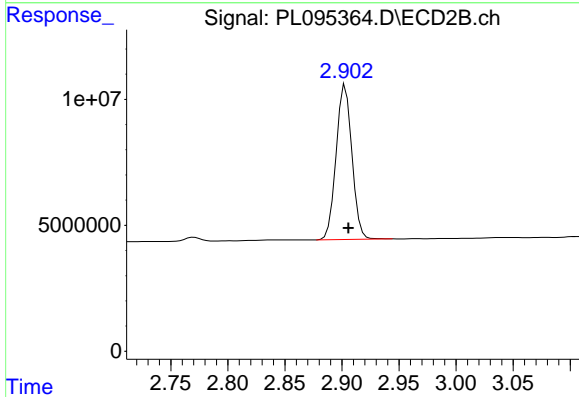
Volume Inj. : 1 µl
 Signal #1 Phase : ZB-MR1 Signal #2 Phase: ZB-MR2
 Signal #1 Info : 30M x 0.32mm x0.5 Signal #2 Info : 30M x 0.32mm x0.25µm



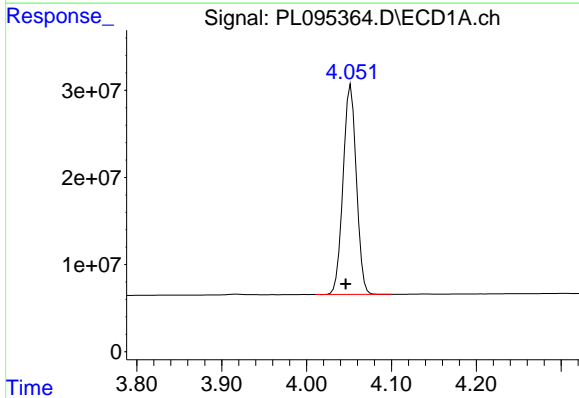


#1 Tetrachloro-m-xylene
R.T.: 3.600 min
Delta R.T.: 0.005 min
Response: 68929619
Conc: 21.11 ng/ml

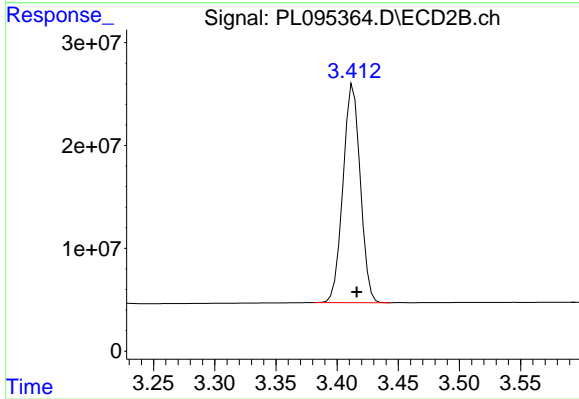
Instrument :
ECD_L
ClientSampleId :



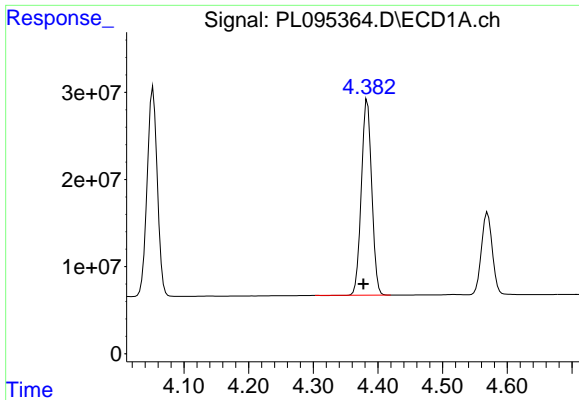
#1 Tetrachloro-m-xylene
R.T.: 2.903 min
Delta R.T.: -0.003 min
Response: 59175750
Conc: 18.61 ng/ml



#2 alpha-BHC
R.T.: 4.052 min
Delta R.T.: 0.006 min
Response: 261380520
Conc: 52.76 ng/ml



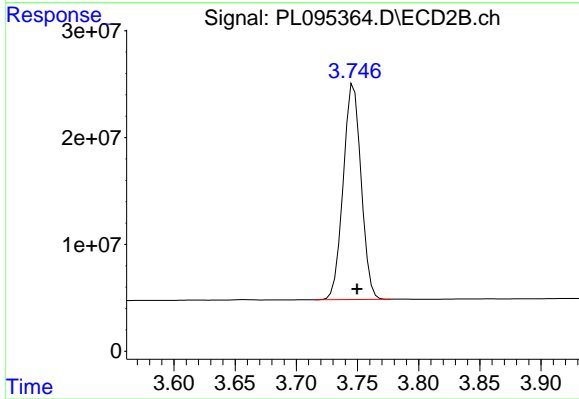
#2 alpha-BHC
R.T.: 3.413 min
Delta R.T.: -0.003 min
Response: 208546288
Conc: 46.88 ng/ml



#3 gamma-BHC (Lindane)

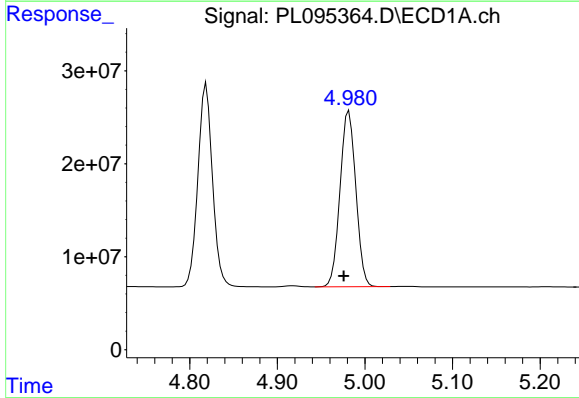
R.T.: 4.384 min
Delta R.T.: 0.006 min
Response: 249798102
Conc: 52.77 ng/ml

Instrument :
ECD_L
ClientSampleId :



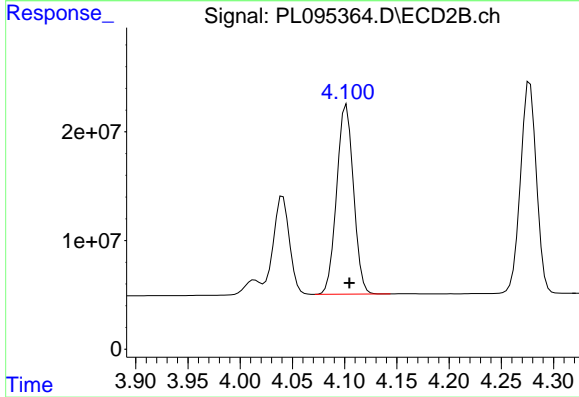
#3 gamma-BHC (Lindane)

R.T.: 3.747 min
Delta R.T.: -0.003 min
Response: 205160226
Conc: 46.65 ng/ml



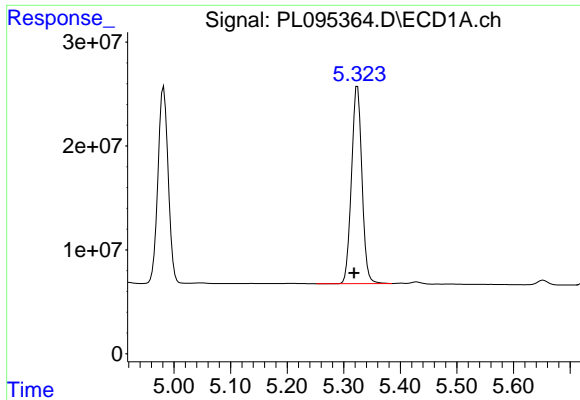
#4 Heptachlor

R.T.: 4.982 min
Delta R.T.: 0.006 min
Response: 237165888
Conc: 51.85 ng/ml



#4 Heptachlor

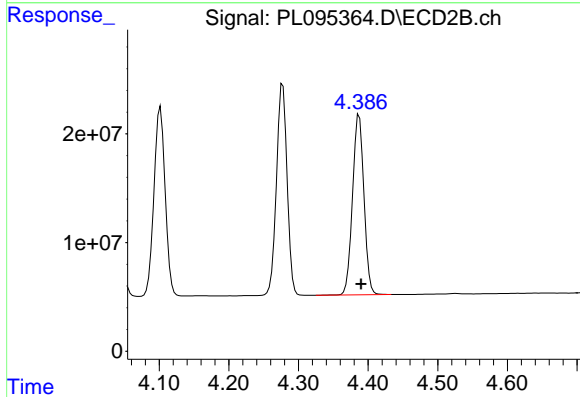
R.T.: 4.102 min
Delta R.T.: -0.003 min
Response: 195199448
Conc: 44.80 ng/ml



#5 Aldrin

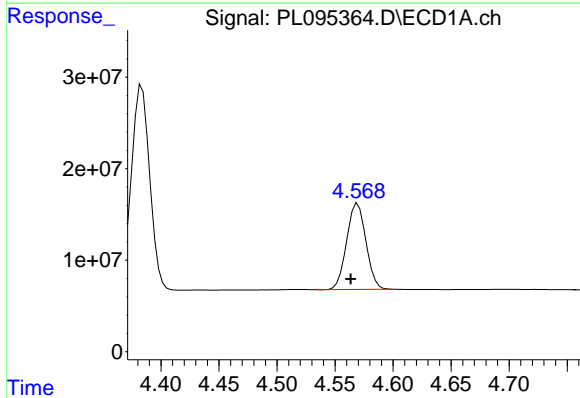
R.T.: 5.324 min
 Delta R.T.: 0.006 min
 Response: 244641484
 Conc: 53.26 ng/ml

Instrument :
 ECD_L
 ClientSampleId :



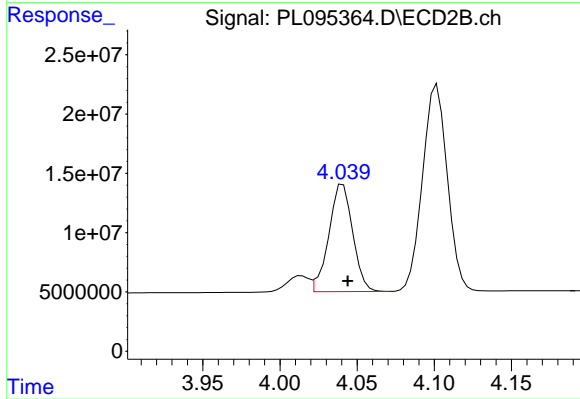
#5 Aldrin

R.T.: 4.387 min
 Delta R.T.: -0.003 min
 Response: 188982044
 Conc: 45.92 ng/ml



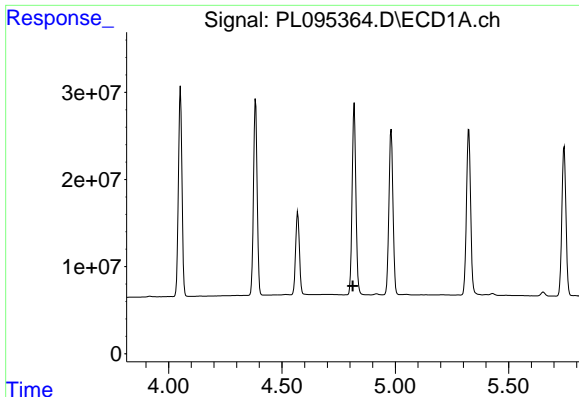
#6 beta-BHC

R.T.: 4.570 min
 Delta R.T.: 0.006 min
 Response: 108658056
 Conc: 52.55 ng/ml



#6 beta-BHC

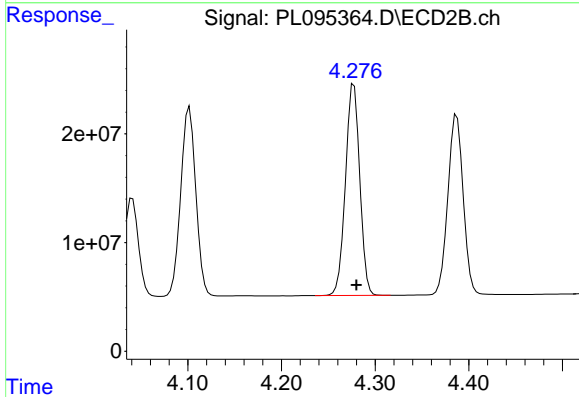
R.T.: 4.041 min
 Delta R.T.: -0.003 min
 Response: 97691827
 Conc: 47.06 ng/ml



#7 delta-BHC

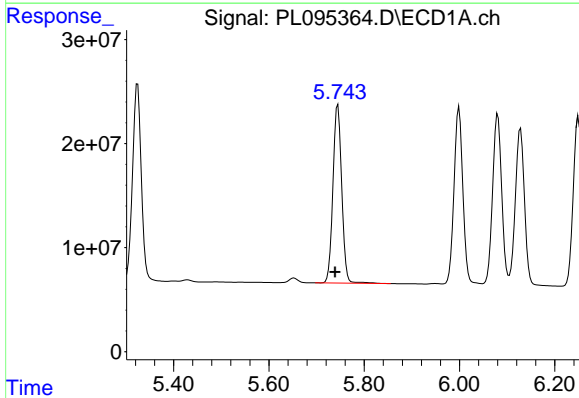
R.T.: 4.819 min
 Delta R.T.: 0.007 min
 Response: -119446892
 Conc: N.D.

Instrument :
 ECD_L
 ClientSampleId :



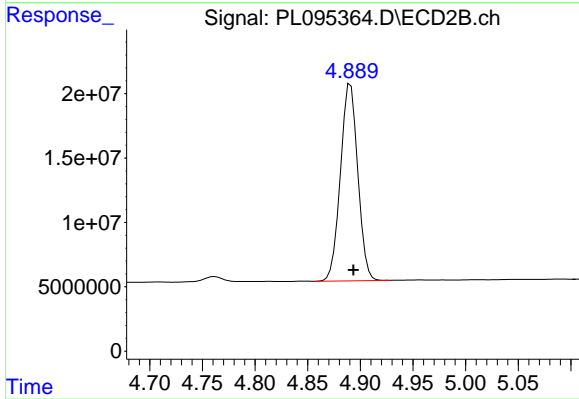
#7 delta-BHC

R.T.: 4.277 min
 Delta R.T.: -0.002 min
 Response: 206959737
 Conc: 47.23 ng/ml



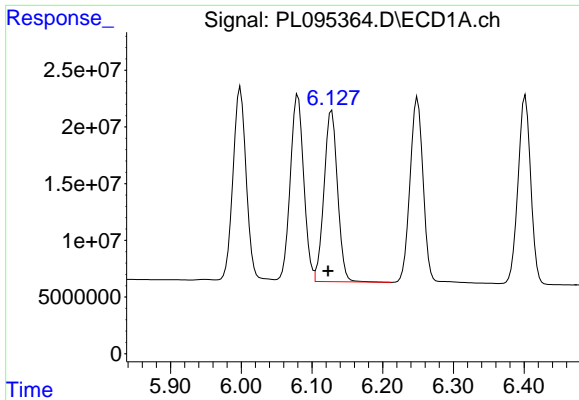
#8 Heptachlor epoxide

R.T.: 5.745 min
 Delta R.T.: 0.006 min
 Response: 220316301
 Conc: 55.01 ng/ml



#8 Heptachlor epoxide

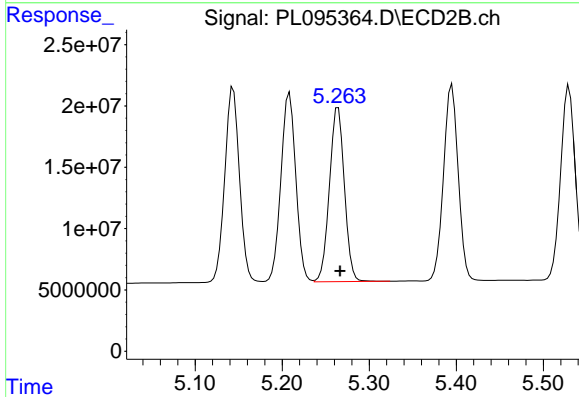
R.T.: 4.891 min
 Delta R.T.: -0.003 min
 Response: 176214918
 Conc: 45.62 ng/ml



#9 Endosulfan I

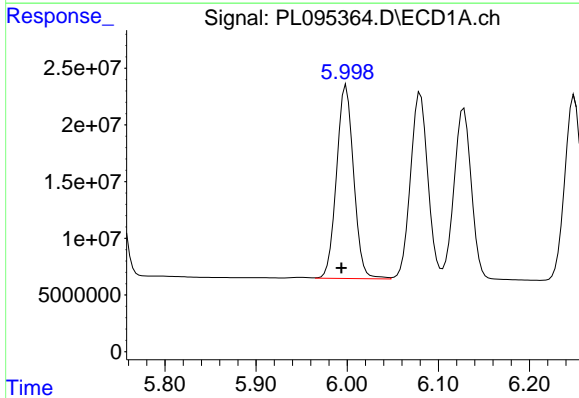
R.T.: 6.128 min
 Delta R.T.: 0.005 min
 Response: 201102793
 Conc: 52.96 ng/ml

Instrument :
 ECD_L
 ClientSampleId :



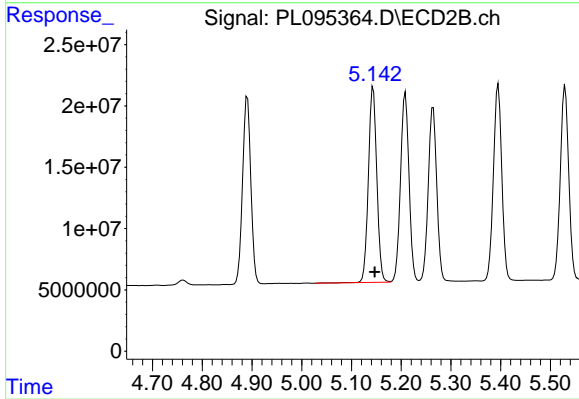
#9 Endosulfan I

R.T.: 5.264 min
 Delta R.T.: -0.002 min
 Response: 169465070
 Conc: 46.30 ng/ml



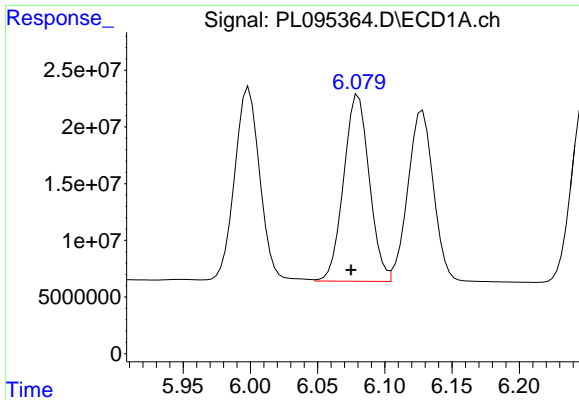
#10 gamma-Chlordane

R.T.: 5.999 min
 Delta R.T.: 0.005 min
 Response: 222205962
 Conc: 54.47 ng/ml



#10 gamma-Chlordane

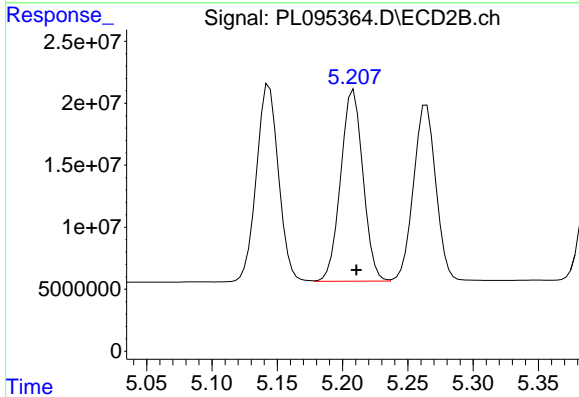
R.T.: 5.144 min
 Delta R.T.: -0.003 min
 Response: 187516019
 Conc: 46.27 ng/ml



#11 alpha-Chlordane

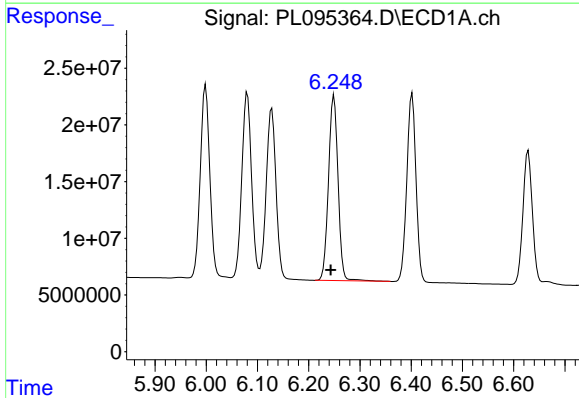
R.T.: 6.080 min
 Delta R.T.: 0.005 min
 Response: 217906483
 Conc: 53.59 ng/ml

Instrument :
 ECD_L
 ClientSampleId :



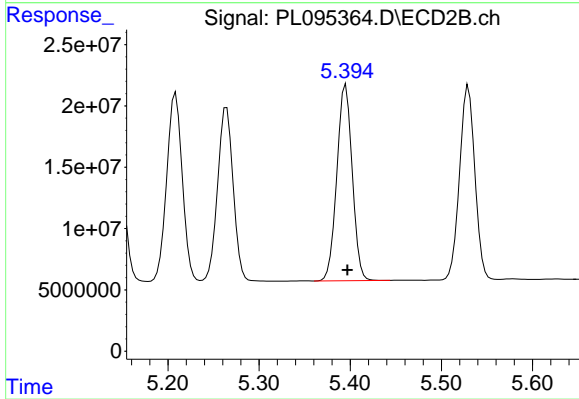
#11 alpha-Chlordane

R.T.: 5.209 min
 Delta R.T.: -0.002 min
 Response: 183549765
 Conc: 46.11 ng/ml



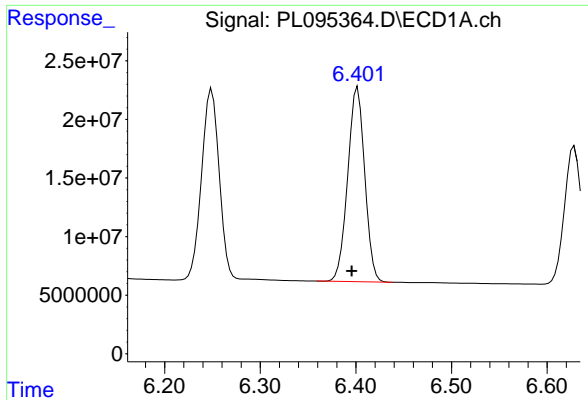
#12 4,4'-DDE

R.T.: 6.249 min
 Delta R.T.: 0.006 min
 Response: 211445679
 Conc: 53.93 ng/ml



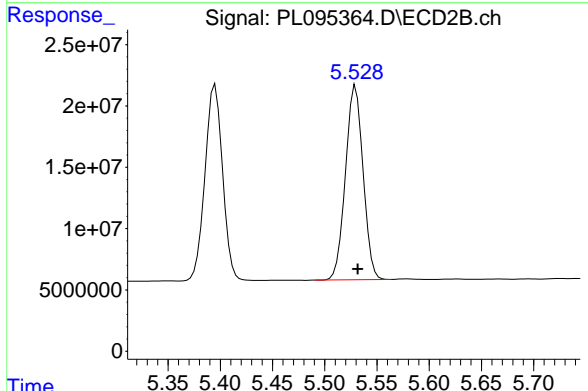
#12 4,4'-DDE

R.T.: 5.395 min
 Delta R.T.: -0.002 min
 Response: 187474091
 Conc: 46.10 ng/ml

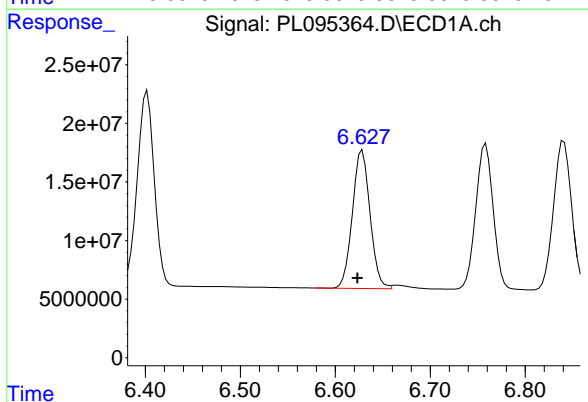


#13 Dieldrin
 R.T.: 6.402 min
 Delta R.T.: 0.006 min
 Response: 206196411
 Conc: 53.49 ng/ml

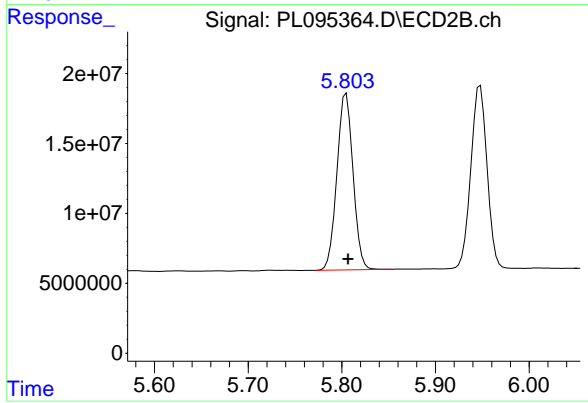
Instrument :
 ECD_L
 ClientSampleId :



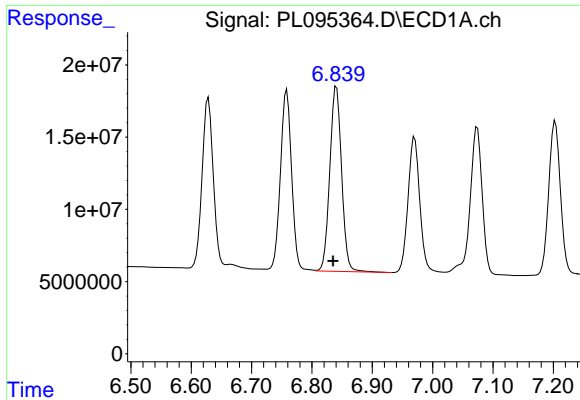
#13 Dieldrin
 R.T.: 5.530 min
 Delta R.T.: -0.002 min
 Response: 185493804
 Conc: 45.61 ng/ml



#14 Endrin
 R.T.: 6.628 min
 Delta R.T.: 0.005 min
 Response: 152384080
 Conc: 47.85 ng/ml



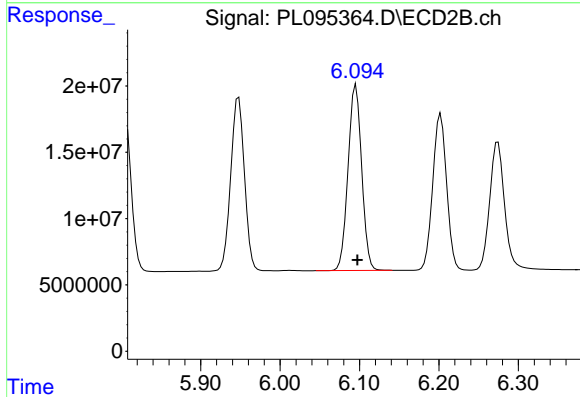
#14 Endrin
 R.T.: 5.805 min
 Delta R.T.: -0.002 min
 Response: 150872933
 Conc: 41.44 ng/ml



#15 Endosulfan II

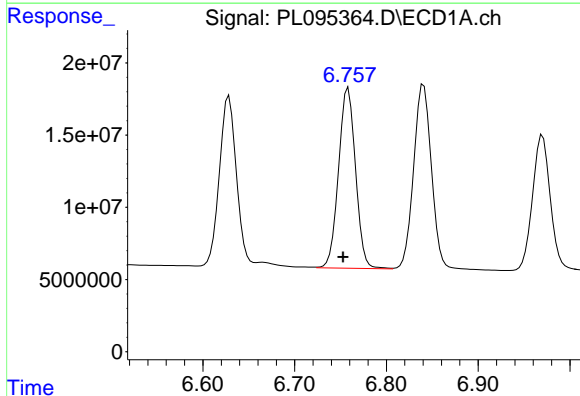
R.T.: 6.841 min
 Delta R.T.: 0.006 min
 Response: 174236317
 Conc: 54.58 ng/ml

Instrument :
 ECD_L
 ClientSampleId :



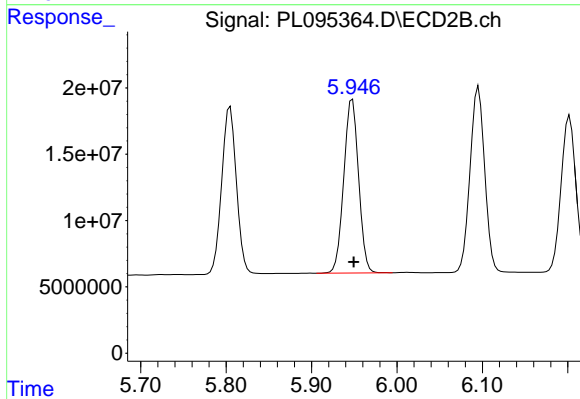
#15 Endosulfan II

R.T.: 6.095 min
 Delta R.T.: -0.002 min
 Response: 167130653
 Conc: 46.54 ng/ml



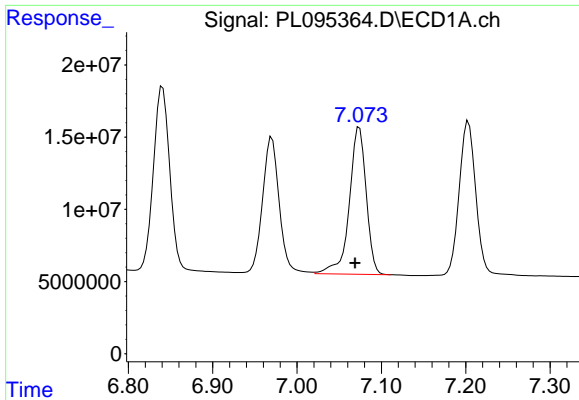
#16 4,4'-DDD

R.T.: 6.758 min
 Delta R.T.: 0.006 min
 Response: 160610461
 Conc: 56.73 ng/ml



#16 4,4'-DDD

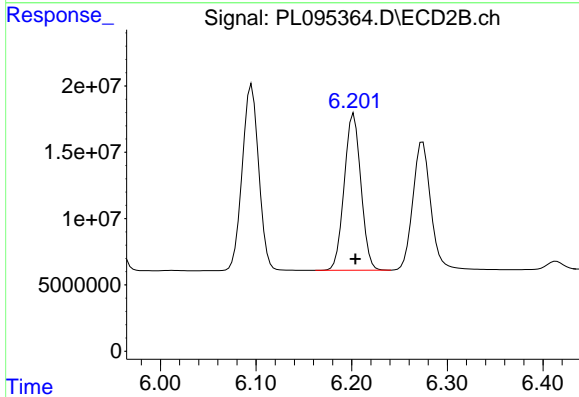
R.T.: 5.948 min
 Delta R.T.: -0.001 min
 Response: 157813522
 Conc: 48.31 ng/ml



#17 4,4'-DDT

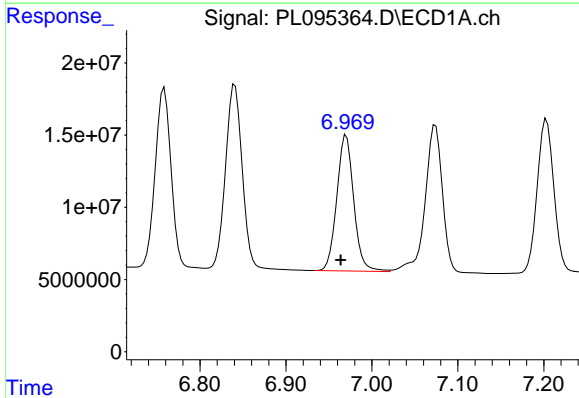
R.T.: 7.074 min
 Delta R.T.: 0.005 min
 Response: 141333658
 Conc: 49.62 ng/ml

Instrument :
 ECD_L
 ClientSampleId :



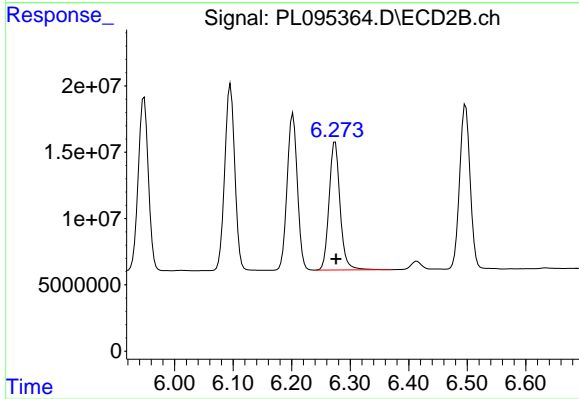
#17 4,4'-DDT

R.T.: 6.202 min
 Delta R.T.: -0.001 min
 Response: 143573431
 Conc: 41.78 ng/ml



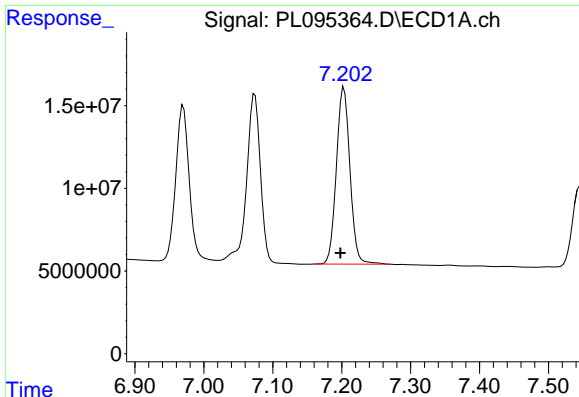
#18 Endrin aldehyde

R.T.: 6.970 min
 Delta R.T.: 0.006 min
 Response: 128870559
 Conc: 55.53 ng/ml



#18 Endrin aldehyde

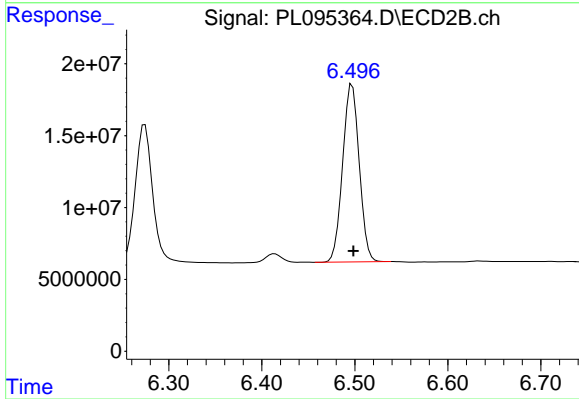
R.T.: 6.274 min
 Delta R.T.: -0.001 min
 Response: 126101126
 Conc: 48.26 ng/ml



#19 Endosulfan Sulfate

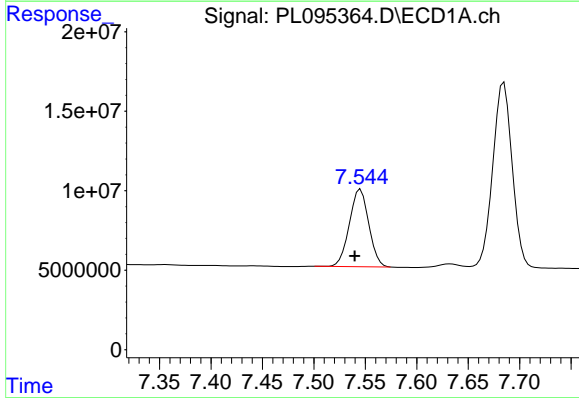
R.T.: 7.203 min
 Delta R.T.: 0.005 min
 Response: 146478254
 Conc: 52.28 ng/ml

Instrument :
 ECD_L
 ClientSampleId :



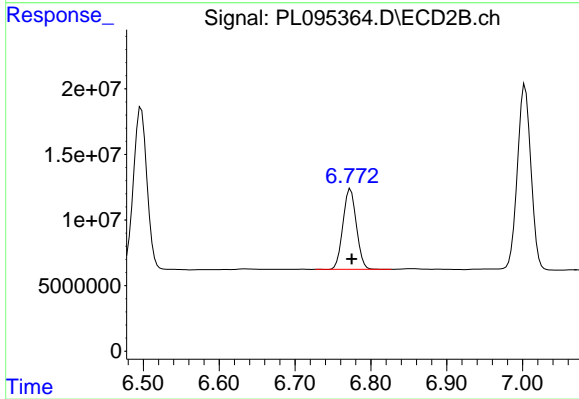
#19 Endosulfan Sulfate

R.T.: 6.497 min
 Delta R.T.: -0.001 min
 Response: 153227426
 Conc: 46.18 ng/ml



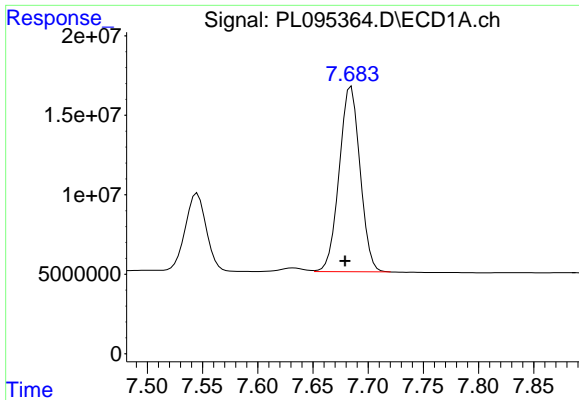
#20 Methoxychlor

R.T.: 7.545 min
 Delta R.T.: 0.006 min
 Response: 63868325
 Conc: 45.78 ng/ml



#20 Methoxychlor

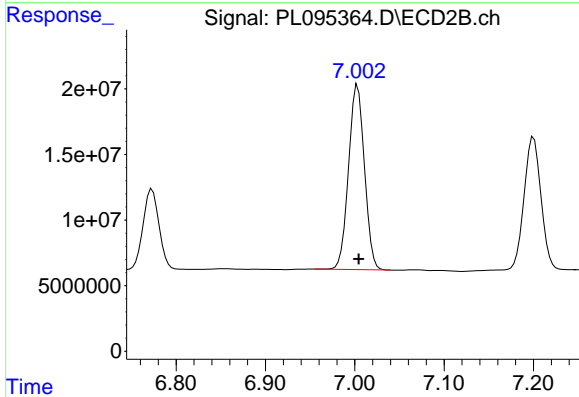
R.T.: 6.773 min
 Delta R.T.: -0.002 min
 Response: 75716296
 Conc: 39.70 ng/ml



#21 Endrin ketone

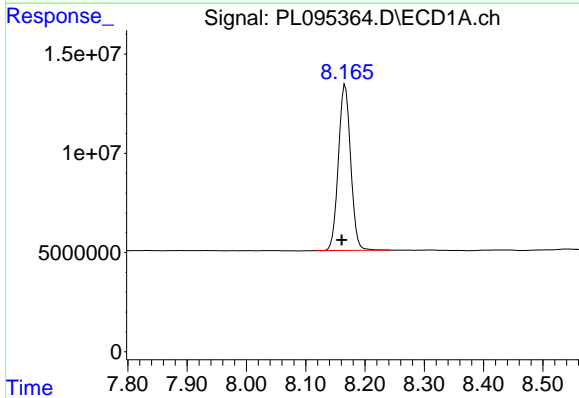
R.T.: 7.685 min
 Delta R.T.: 0.005 min
 Response: 153136851
 Conc: 53.72 ng/ml

Instrument :
 ECD_L
 ClientSampleId :



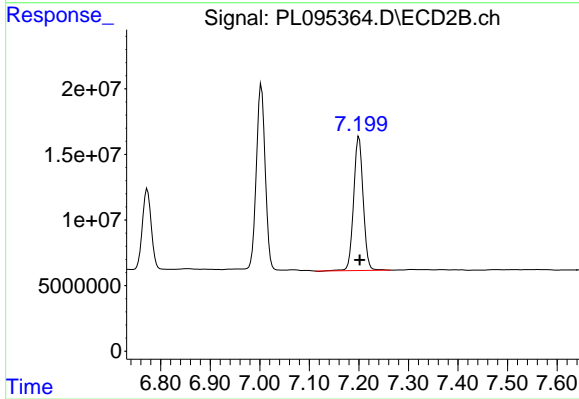
#21 Endrin ketone

R.T.: 7.003 min
 Delta R.T.: -0.001 min
 Response: 174270242
 Conc: 49.49 ng/ml



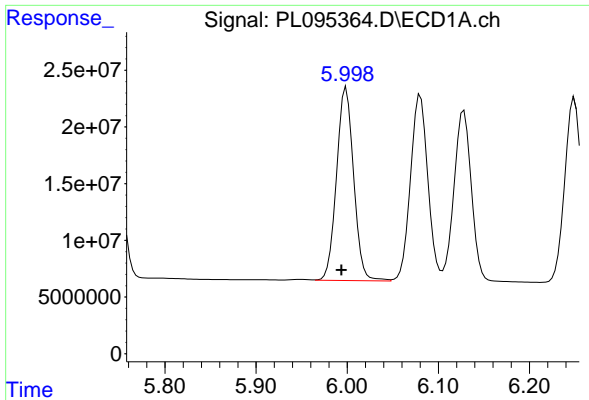
#22 Mirex

R.T.: 8.167 min
 Delta R.T.: 0.006 min
 Response: 120333728
 Conc: 50.64 ng/ml



#22 Mirex

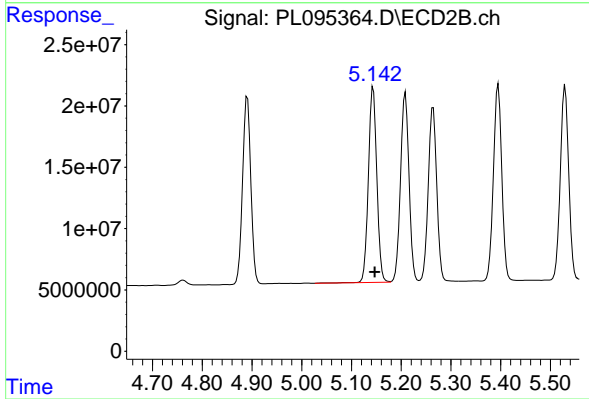
R.T.: 7.200 min
 Delta R.T.: -0.001 min
 Response: 136749185
 Conc: 47.44 ng/ml



#25 Chlordane-3

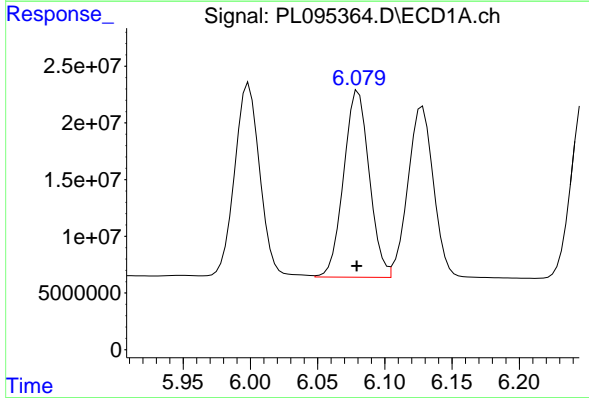
R.T.: 5.999 min
Delta R.T.: 0.005 min
Response: 222205962
Conc: 285.27 ng/ml

Instrument :
ECD_L
ClientSampleId :



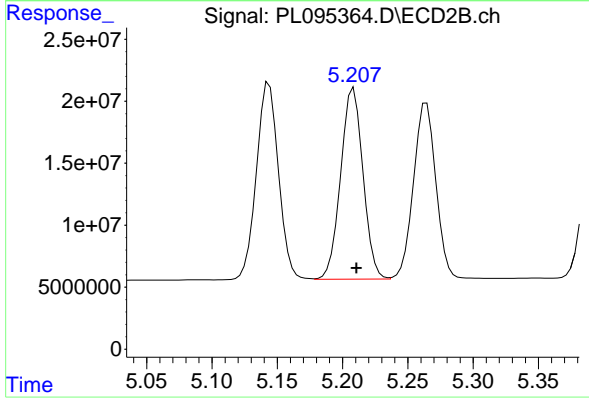
#25 Chlordane-3

R.T.: 5.144 min
Delta R.T.: -0.003 min
Response: 187516019
Conc: 362.97 ng/ml



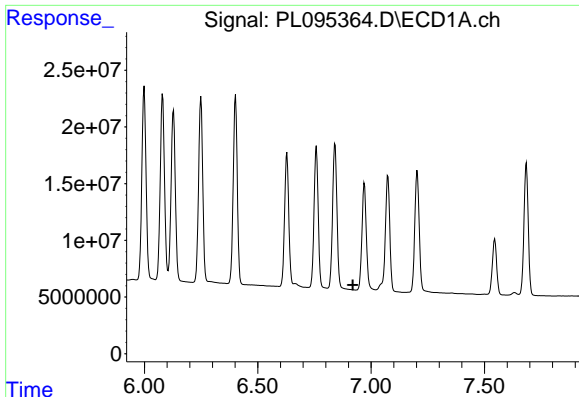
#26 Chlordane-4

R.T.: 6.080 min
Delta R.T.: 0.001 min
Response: 217906483
Conc: 231.10 ng/ml



#26 Chlordane-4

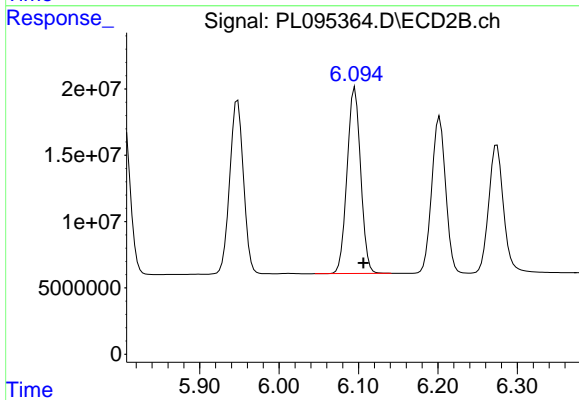
R.T.: 5.209 min
Delta R.T.: -0.002 min
Response: 183549765
Conc: 422.33 ng/ml



#27 Chlordane-5

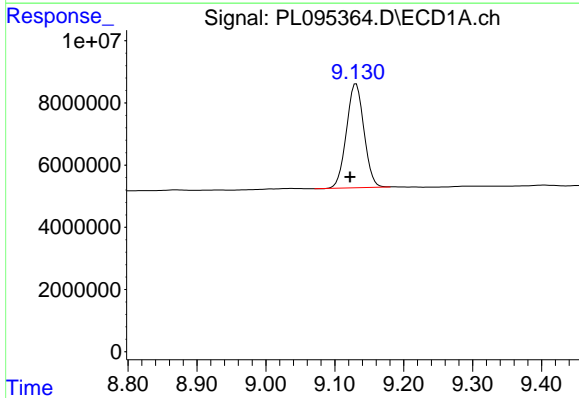
R.T.: 0.000 min
 Exp R.T.: 6.919 min
 Response: 0
 Conc: N.D.

Instrument :
 ECD_L
 ClientSampleId :



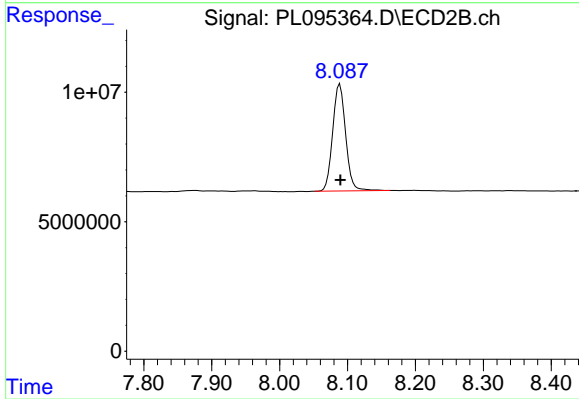
#27 Chlordane-5

R.T.: 6.095 min
 Delta R.T.: -0.011 min
 Response: 167130653
 Conc: 904.69 ng/ml



#28 Decachlorobiphenyl

R.T.: 9.131 min
 Delta R.T.: 0.009 min
 Response: 58983555
 Conc: 21.29 ng/ml



#28 Decachlorobiphenyl

R.T.: 8.089 min
 Delta R.T.: 0.000 min
 Response: 54785974
 Conc: 18.51 ng/ml