

Data Path : Z:\pestpcbsrv\HPCHEM1\ECD\_L\Data\PL042621\  
 Data File : PL066464.D  
 Signal(s) : Signal #1: ECD1A.ch Signal #2: ECD2B.ch  
 Acq On : 26 Apr 2021 15:43  
 Operator : AR\AJ  
 Sample : HEXANE  
 Misc :  
 ALS Vial : 1 Sample Multiplier: 1

Instrument :  
 ECD\_L  
 ClientSampleId :  
 HEXANE

Integration File signal 1: autoint1.e  
 Integration File signal 2: autoint2.e  
 Quant Time: Apr 27 02:44:51 2021  
 Quant Method : Z:\pestpcbsrv\HPCHEM1\ECD\_L\methods\PL042621.M  
 Quant Title : GC Extractables  
 QLast Update : Tue Apr 27 02:36:03 2021  
 Response via : Initial Calibration  
 Integrator: ChemStation

Volume Inj. : 1 µl  
 Signal #1 Phase : ZB-MR2 Signal #2 Phase: ZB-MR1  
 Signal #1 Info : 30M x 0.32mm x0.2 Signal #2 Info : 30M x 0.32mm x0.5µm

Compound	RT#1	RT#2	Resp#1	Resp#2	ng/ml	ng/ml
----------	------	------	--------	--------	-------	-------

System Monitoring Compounds

Target Compounds

8) B	Heptachlo...	0.000	6.068	0	5242846	N.D.	1.417 #
13) MA	Dieldrin	5.694	0.000	4940430	0	1.018	N.D. #
14) MA	Endrin	5.956	0.000	3637574	0	0.835	N.D. #
21) B	Endrin ke...	0.000	7.972	0	1219943	N.D.	0.344 #
23)	Chlordane-1	4.292	0.000	1486018	0	10.485	N.D. #
24)	Chlordane-2	0.000	5.647	0	18941965	N.D.	112.796 #

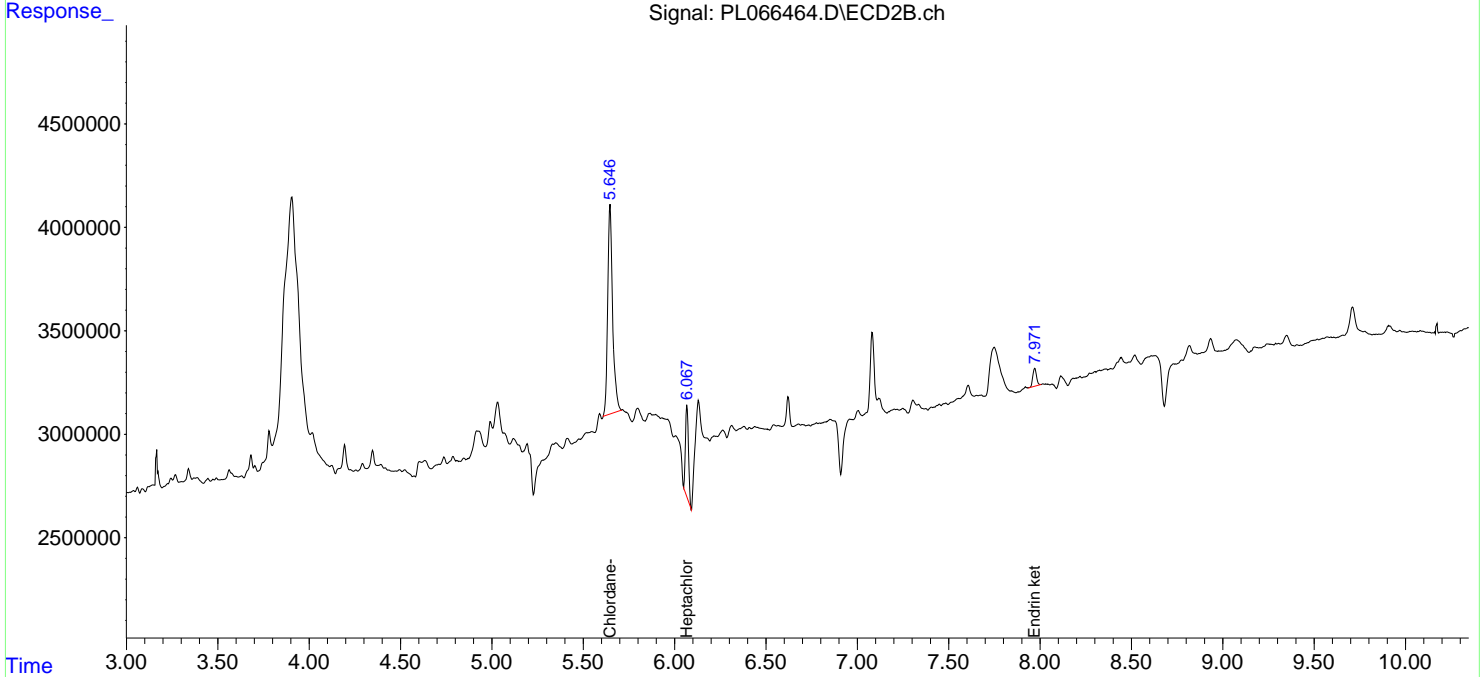
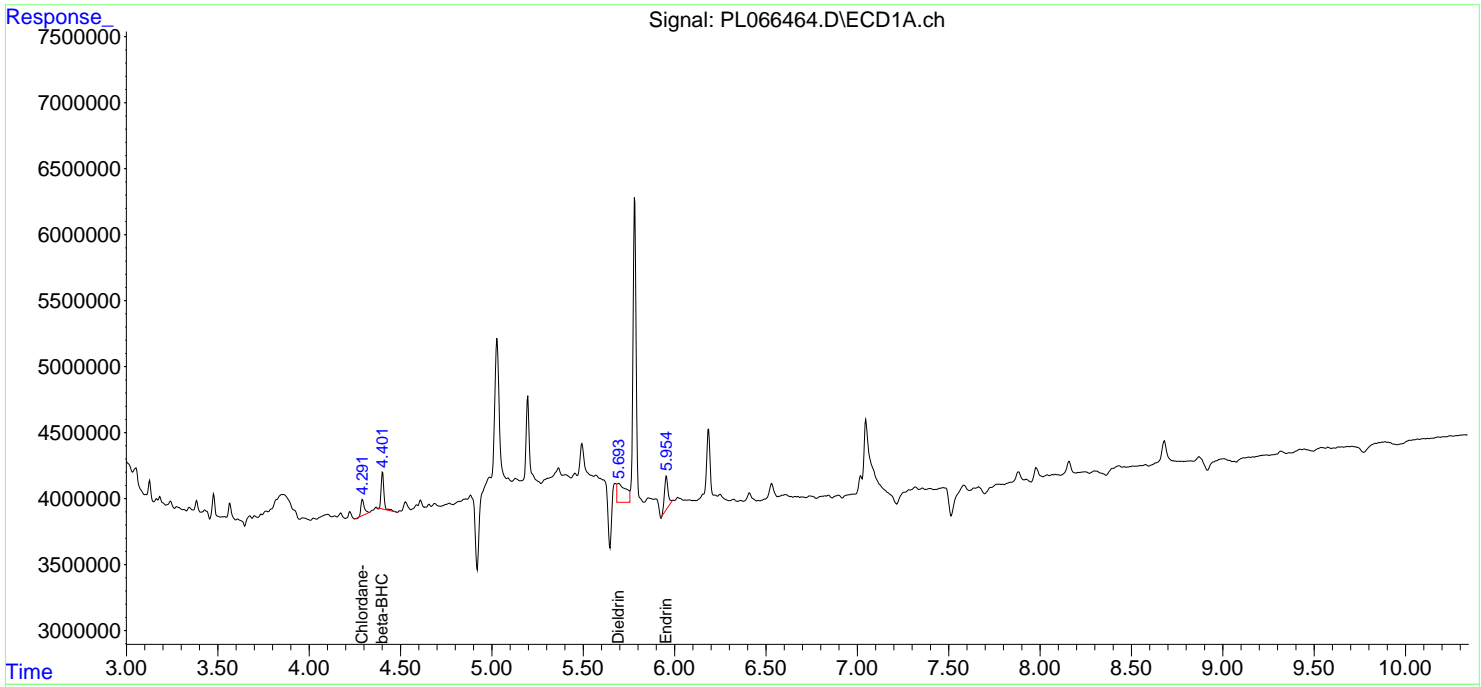
(f)=RT Delta > 1/2 Window (#)=Amounts differ by > 25% (m)=manual int.

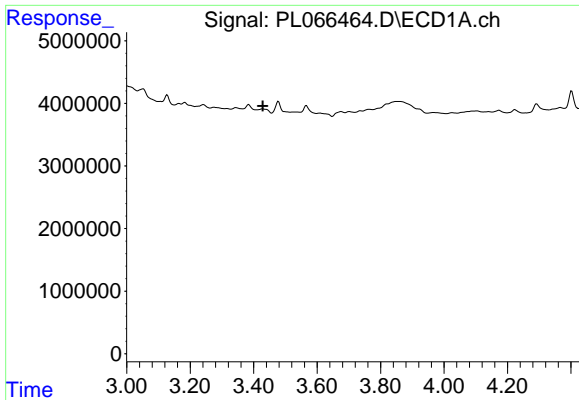
Data Path : Z:\pestpcbsrv\HPCHEM1\ECD\_L\Data\PL042621\  
 Data File : PL066464.D  
 Signal(s) : Signal #1: ECD1A.ch Signal #2: ECD2B.ch  
 Acq On : 26 Apr 2021 15:43  
 Operator : AR\AJ  
 Sample : HEXANE  
 Misc :  
 ALS Vial : 1 Sample Multiplier: 1

Instrument :  
 ECD\_L  
 ClientSampleId :  
 HEXANE

Integration File signal 1: autoint1.e  
 Integration File signal 2: autoint2.e  
 Quant Time: Apr 27 02:44:51 2021  
 Quant Method : Z:\pestpcbsrv\HPCHEM1\ECD\_L\methods\PL042621.M  
 Quant Title : GC Extractables  
 QLast Update : Tue Apr 27 02:36:03 2021  
 Response via : Initial Calibration  
 Integrator: ChemStation

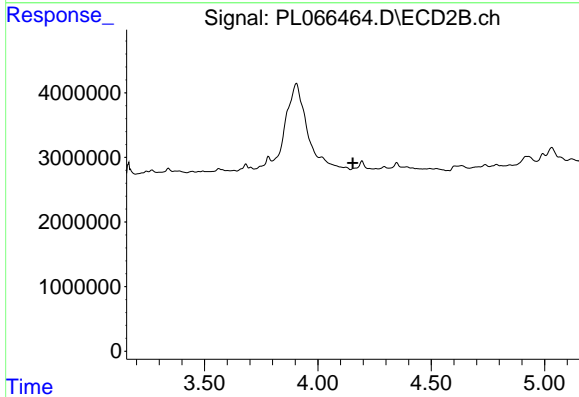
Volume Inj. : 1 µl  
 Signal #1 Phase : ZB-MR2 Signal #2 Phase: ZB-MR1  
 Signal #1 Info : 30M x 0.32mm x0.2 Signal #2 Info : 30M x 0.32mm x0.5µm



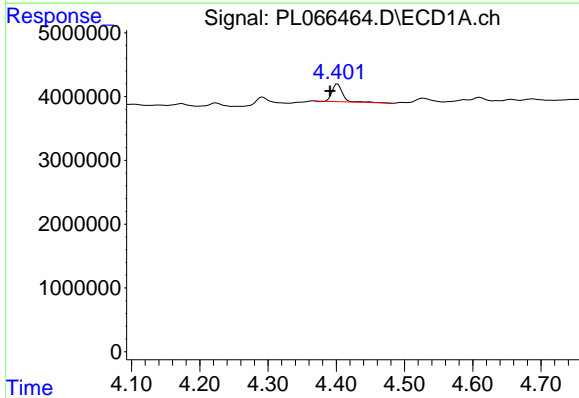


#1 Tetrachloro-m-xylene  
 R.T.: 0.000 min  
 Exp R.T. : 3.429 min  
 Response: 0  
 Conc: N.D.

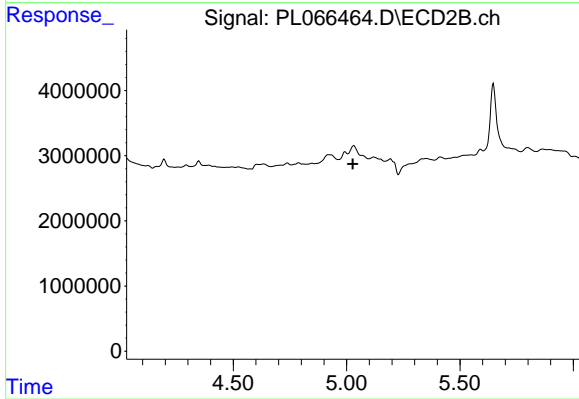
Instrument :  
 ECD\_L  
 ClientSampleId :  
 HEXANE



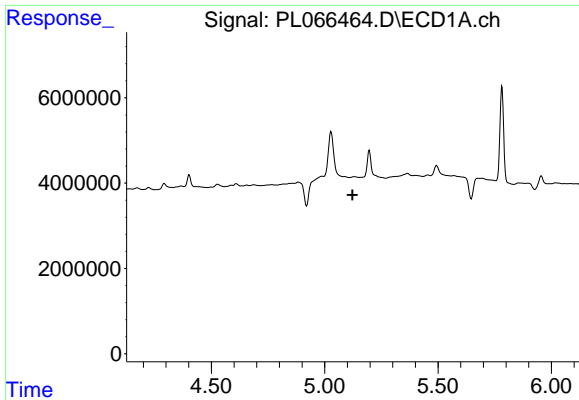
#1 Tetrachloro-m-xylene  
 R.T.: 0.000 min  
 Exp R.T. : 4.154 min  
 Response: 0  
 Conc: N.D.



#6 beta-BHC  
 R.T.: 4.402 min  
 Delta R.T.: 0.011 min  
 Response: 2989145  
 Conc: 1.13 ng/ml



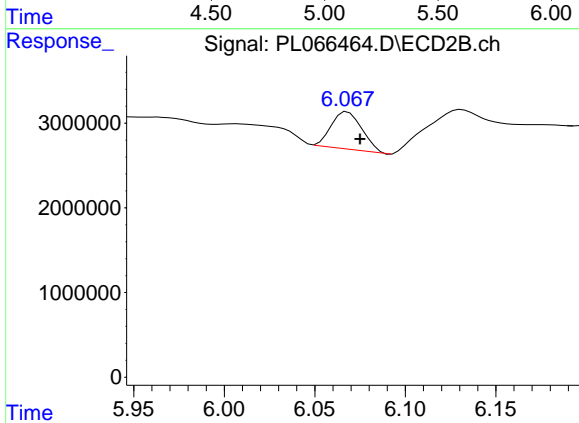
#6 beta-BHC  
 R.T.: 5.032 min  
 Delta R.T.: 0.005 min  
 Response: 1812242  
 Conc: N.D.



#8 Heptachlor epoxide

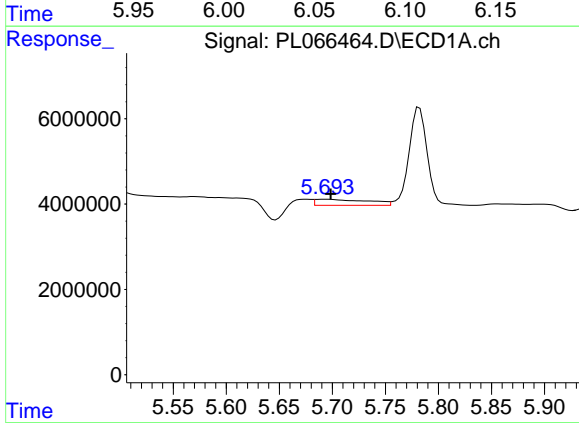
R.T.: 0.000 min  
 Exp R.T. : 5.123 min  
 Response: 0  
 Conc: N.D.

Instrument :  
 ECD\_L  
 ClientSampleId :  
 HEXANE



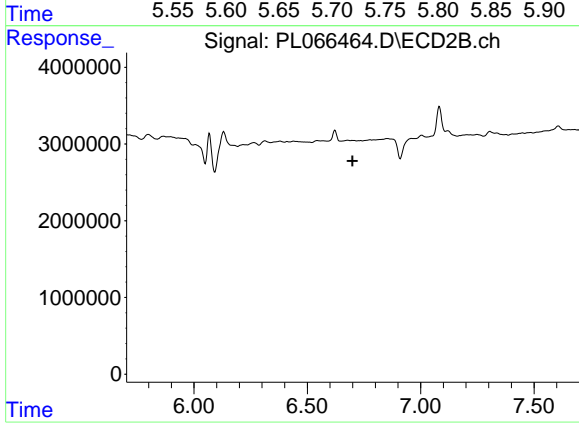
#8 Heptachlor epoxide

R.T.: 6.068 min  
 Delta R.T.: -0.007 min  
 Response: 5242846  
 Conc: 1.42 ng/ml



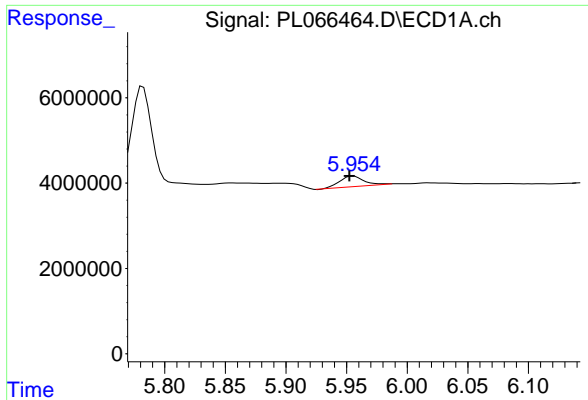
#13 Dieldrin

R.T.: 5.694 min  
 Delta R.T.: -0.004 min  
 Response: 4940430  
 Conc: 1.02 ng/ml



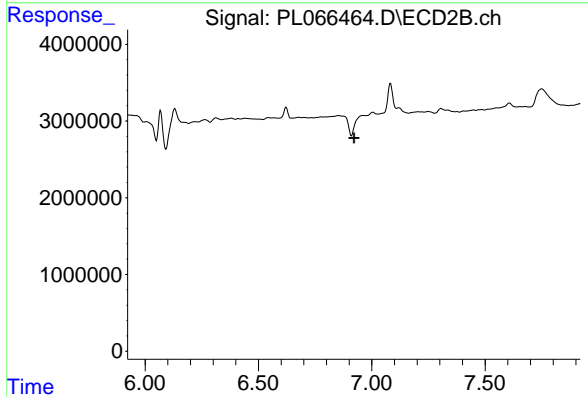
#13 Dieldrin

R.T.: 0.000 min  
 Exp R.T. : 6.700 min  
 Response: 0  
 Conc: N.D.

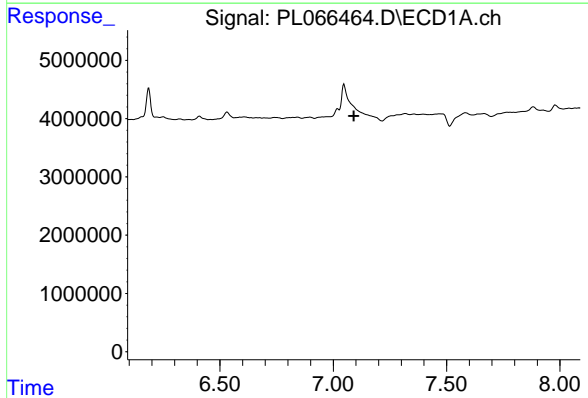


#14 Endrin  
 R.T.: 5.956 min  
 Delta R.T.: 0.003 min  
 Response: 3637574  
 Conc: 0.84 ng/ml

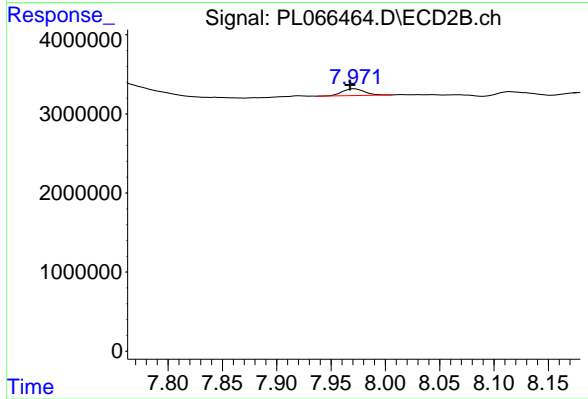
Instrument :  
 ECD\_L  
 ClientSampled :  
 HEXANE



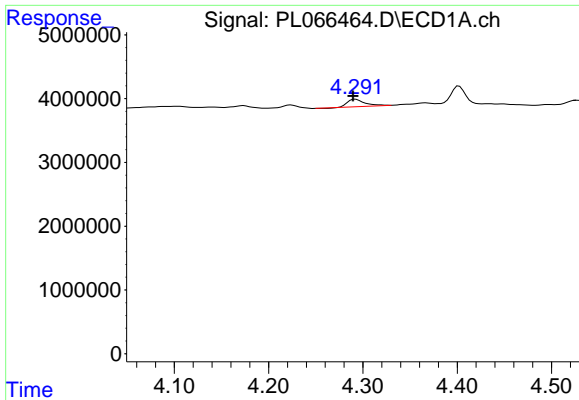
#14 Endrin  
 R.T.: 0.000 min  
 Exp R.T. : 6.922 min  
 Response: 0  
 Conc: N.D.



#21 Endrin ketone  
 R.T.: 0.000 min  
 Exp R.T. : 7.090 min  
 Response: 0  
 Conc: N.D.

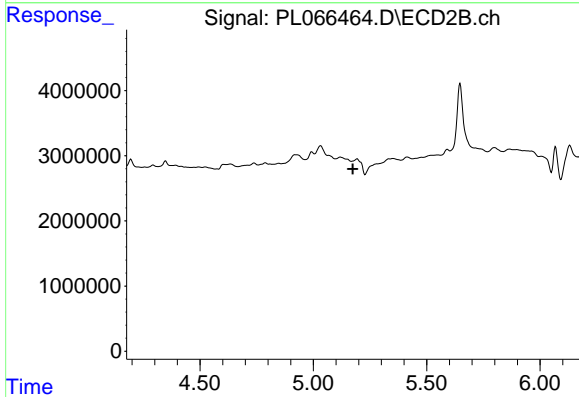


#21 Endrin ketone  
 R.T.: 7.972 min  
 Delta R.T.: 0.004 min  
 Response: 1219943  
 Conc: 0.34 ng/ml

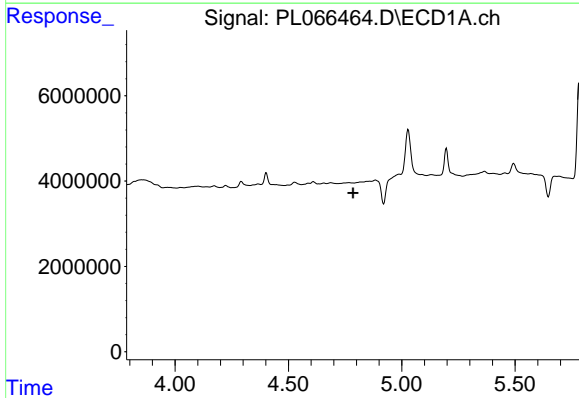


#23 Chlordane-1  
 R.T.: 4.292 min  
 Delta R.T.: 0.002 min  
 Response: 1486018  
 Conc: 10.48 ng/ml

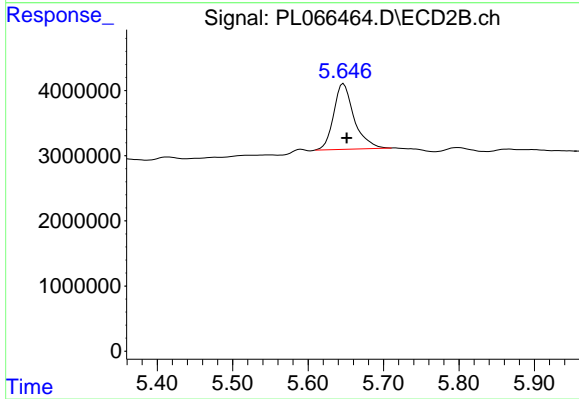
Instrument :  
 ECD\_L  
 ClientSampled :  
 HEXANE



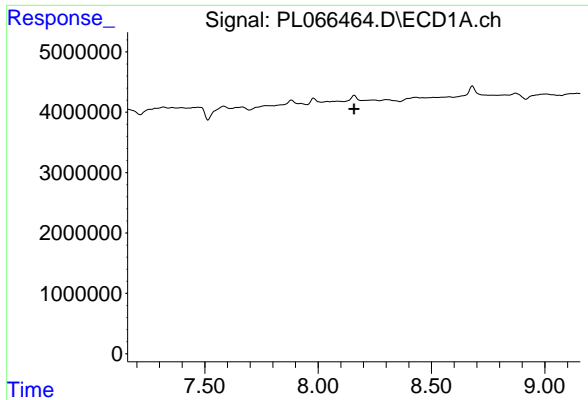
#23 Chlordane-1  
 R.T.: 0.000 min  
 Exp R.T. : 5.174 min  
 Response: 0  
 Conc: N.D.



#24 Chlordane-2  
 R.T.: 0.000 min  
 Exp R.T. : 4.786 min  
 Response: 0  
 Conc: N.D.



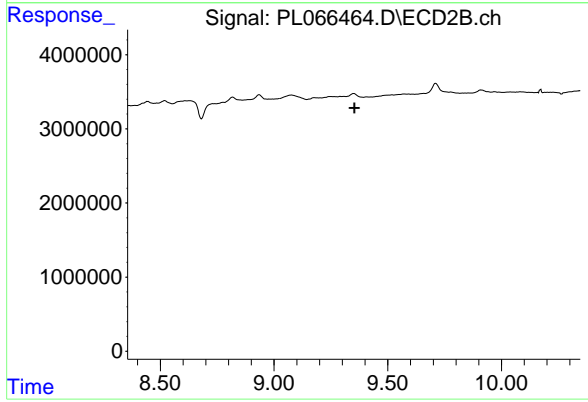
#24 Chlordane-2  
 R.T.: 5.647 min  
 Delta R.T.: -0.004 min  
 Response: 18941965  
 Conc: 112.80 ng/ml



#28 Decachlorobiphenyl

R.T.: 0.000 min  
Exp R.T. : 8.159 min  
Response: 0  
Conc: N.D.

Instrument :  
ECD\_L  
ClientSampleId :  
HEXANE



#28 Decachlorobiphenyl

R.T.: 0.000 min  
Exp R.T. : 9.353 min  
Response: 0  
Conc: N.D.