

Data Path : Z:\pestpcbsrv\HPCHEM1\ECD_L\Data\PL042719\
 Data File : PL047942.D
 Signal(s) : Signal #1: ECD1A.ch Signal #2: ECD2B.ch
 Acq On : 27 Apr 2019 15:04
 Operator : AJ\SJ
 Sample : K2588-07
 Misc :
 ALS Vial : 86 Sample Multiplier: 1

Instrument :
 ECD_L
ClientSampleId :
 PST-001-B013-042519

Integration File signal 1: autoint1.e
 Integration File signal 2: autoint2.e
 Quant Time: Apr 29 01:10:54 2019
 Quant Method : Z:\pestpcbsrv\HPCHEM1\ECD_L\methods\PL042419.M
 Quant Title : GC Extractables
 QLast Update : Thu Apr 25 01:53:03 2019
 Response via : Initial Calibration
 Integrator: ChemStation

Volume Inj. : 1 µl
 Signal #1 Phase : ZB-MR2 Signal #2 Phase: ZB-MR1
 Signal #1 Info : 30M x 0.32mm x0.2 Signal #2 Info : 30M x 0.32mm x0.5µm

| Compound | RT#1 | RT#2 | Resp#1 | Resp#2 | ng/ml | ng/ml |
|-----------------------------|-------|-------|---------|----------|--------|--------|
| ----- | | | | | | |
| System Monitoring Compounds | | | | | | |
| 1) SA Tetrachlo... | 3.330 | 3.943 | 190.5E6 | 49128280 | 20.596 | 20.579 |
| 28) SA Decachlor... | 8.003 | 8.986 | 153.3E6 | 43806735 | 13.691 | 15.346 |

Target Compounds

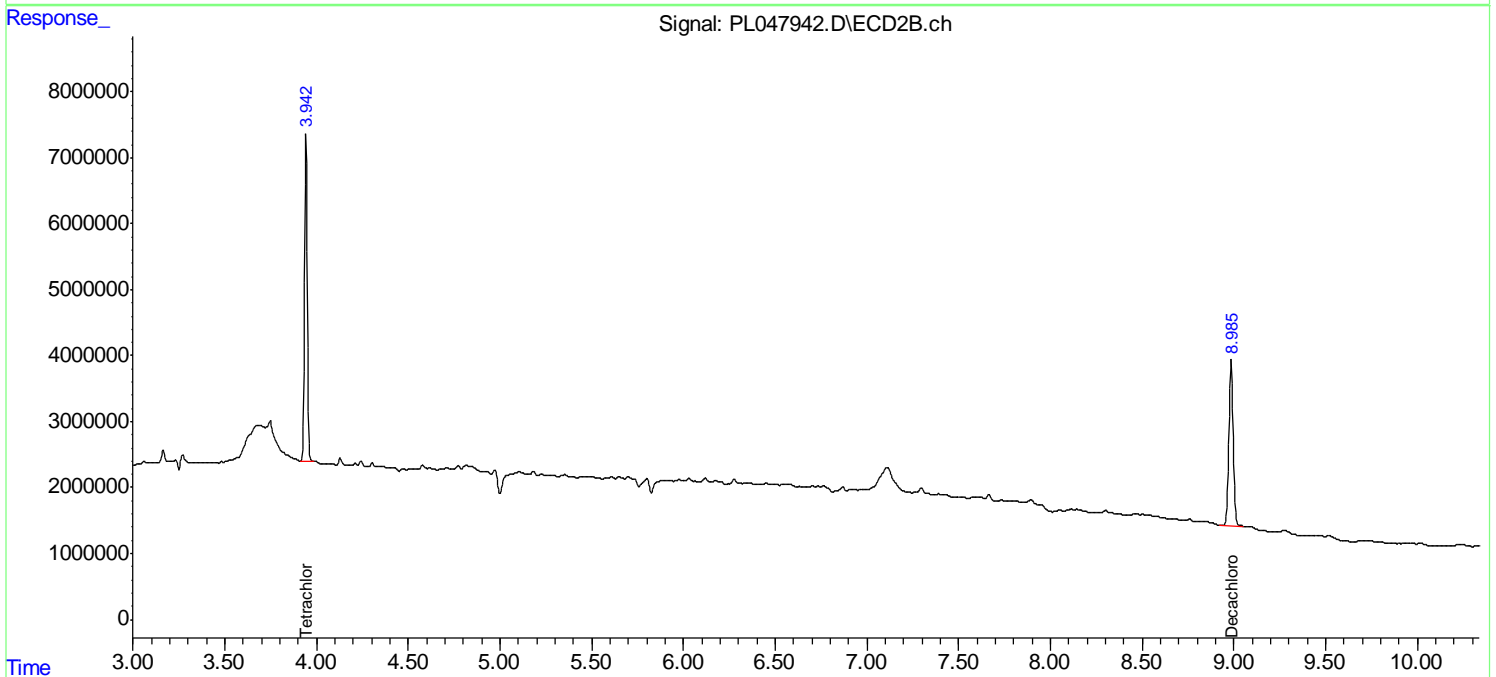
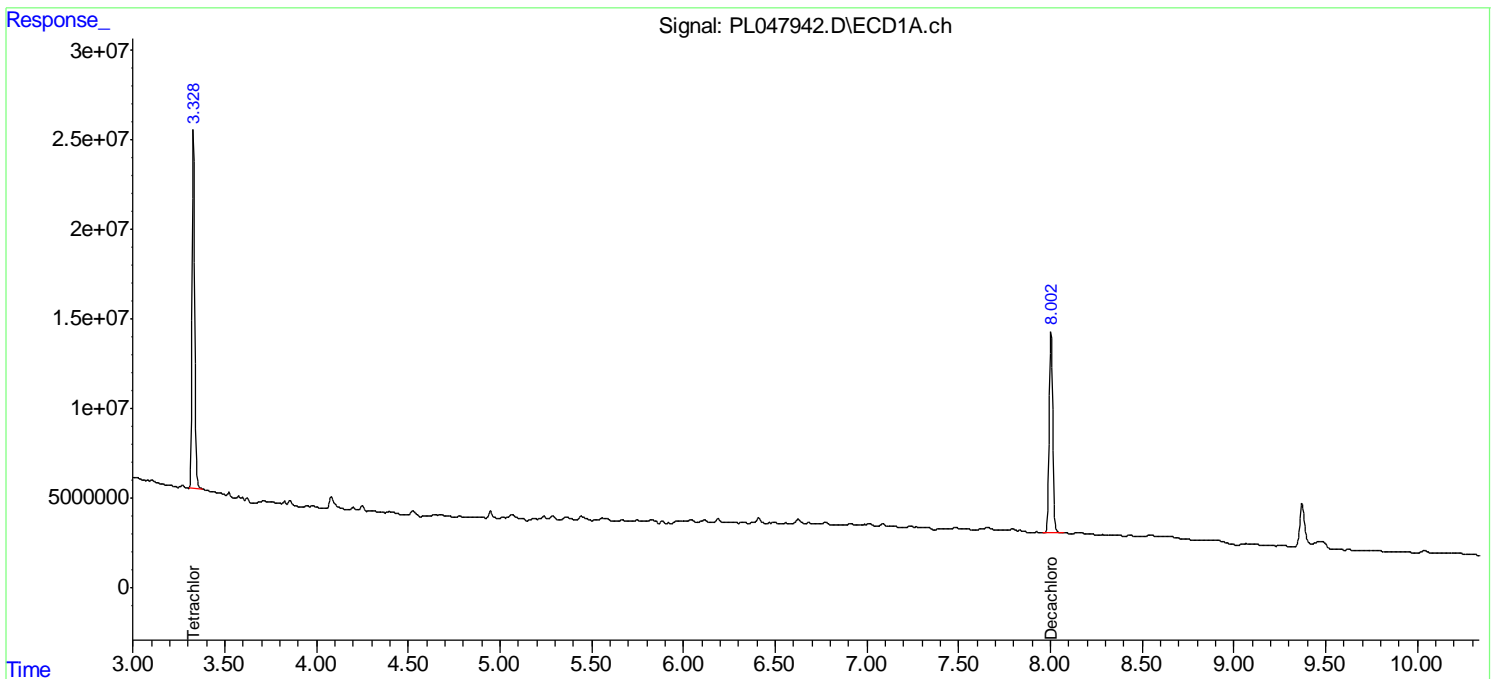
(f)=RT Delta > 1/2 Window (#)=Amounts differ by > 25% (m)=manual int.

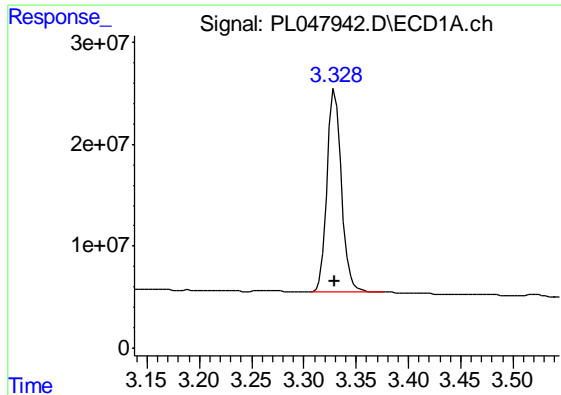
Data Path : Z:\pestpcbsrv\HPCHEM1\ECD_L\Data\PL042719\
 Data File : PL047942.D
 Signal(s) : Signal #1: ECD1A.ch Signal #2: ECD2B.ch
 Acq On : 27 Apr 2019 15:04
 Operator : AJ\SJ
 Sample : K2588-07
 Misc :
 ALS Vial : 86 Sample Multiplier: 1

Instrument :
 ECD_L
ClientSampleId :
 PST-001-B013-042519

Integration File signal 1: autoint1.e
 Integration File signal 2: autoint2.e
 Quant Time: Apr 29 01:10:54 2019
 Quant Method : Z:\pestpcbsrv\HPCHEM1\ECD_L\methods\PL042419.M
 Quant Title : GC Extractables
 QLast Update : Thu Apr 25 01:53:03 2019
 Response via : Initial Calibration
 Integrator: ChemStation

Volume Inj. : 1 µl
 Signal #1 Phase : ZB-MR2 Signal #2 Phase: ZB-MR1
 Signal #1 Info : 30M x 0.32mm x0.2 Signal #2 Info : 30M x 0.32mm x0.5µm

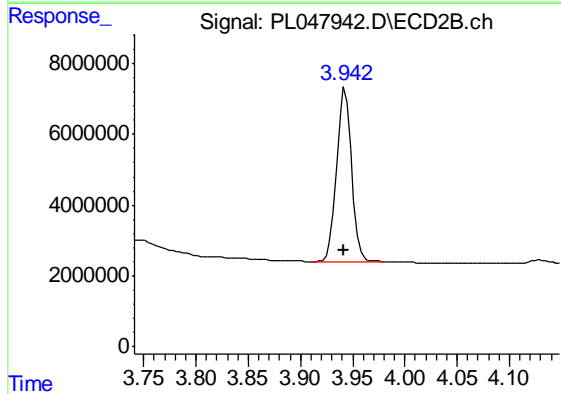




#1 Tetrachloro-m-xylene

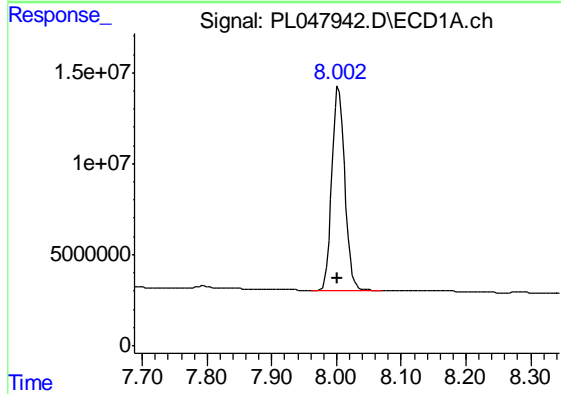
R.T.: 3.330 min
 Delta R.T.: 0.000 min
 Response: 190478017
 Conc: 20.60 ng/ml

Instrument :
 ECD_L
 ClientSampleId :
 PST-001-B013-042519



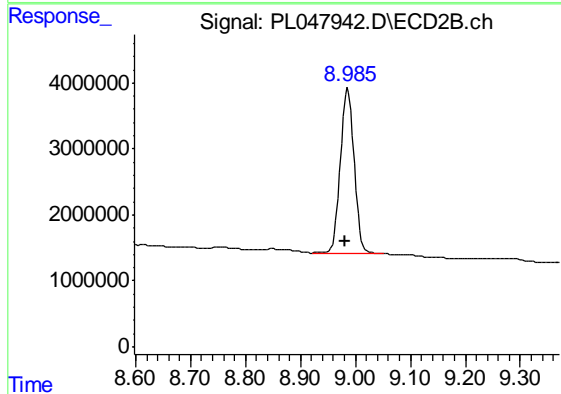
#1 Tetrachloro-m-xylene

R.T.: 3.943 min
 Delta R.T.: 0.001 min
 Response: 49128280
 Conc: 20.58 ng/ml



#28 Decachlorobiphenyl

R.T.: 8.003 min
 Delta R.T.: 0.002 min
 Response: 153261943
 Conc: 13.69 ng/ml



#28 Decachlorobiphenyl

R.T.: 8.986 min
 Delta R.T.: 0.005 min
 Response: 43806735
 Conc: 15.35 ng/ml