

Data Path : Z:\pestpcbsrv\HPCHEM1\ECD_L\Data\PL042719\
 Data File : PL047910.D
 Signal(s) : Signal #1: ECD1A.ch Signal #2: ECD2B.ch
 Acq On : 27 Apr 2019 05:02
 Operator : AJ\SJ
 Sample : K2587-09
 Misc :
 ALS Vial : 61 Sample Multiplier: 1

Instrument :
 ECD_L
ClientSampleId :
 PST-004-B166-042319

Manual Integrations
APPROVED
 mohammad
 4/29/2019 4:32:44 PM

Integration File signal 1: autoint1.e
 Integration File signal 2: autoint2.e
 Quant Time: Apr 27 05:27:12 2019
 Quant Method : Z:\pestpcbsrv\HPCHEM1\ECD_L\methods\PL042419.M
 Quant Title : GC Extractables
 QLast Update : Thu Apr 25 01:53:03 2019
 Response via : Initial Calibration
 Integrator: ChemStation

Volume Inj. : 1 µl
 Signal #1 Phase : ZB-MR2 Signal #2 Phase: ZB-MR1
 Signal #1 Info : 30M x 0.32mm x0.2 Signal #2 Info : 30M x 0.32mm x0.5µm

Compound	RT#1	RT#2	Resp#1	Resp#2	ng/ml	ng/ml

System Monitoring Compounds						
1) SA Tetrachlo...	3.330	3.943	194.4E6	49913071	21.018	20.908
28) SA Decachlor...	8.004	8.987	135.7E6	40935317	12.126	14.340
Target Compounds						
10) B gamma-Chl...	5.220	6.033	1985449	2969945	0.149m	0.981 #
11) B alpha-Chl...	5.277	6.117	2834937	1051297	0.217m	0.347m#
12) B 4,4'-DDE	5.442	6.275	15888735	4301594	1.277m	1.558
17) MA 4,4'-DDT	6.189	7.067	7999683	4785848	0.802	2.009m#

(f)=RT Delta > 1/2 Window (#)=Amounts differ by > 25% (m)=manual int.

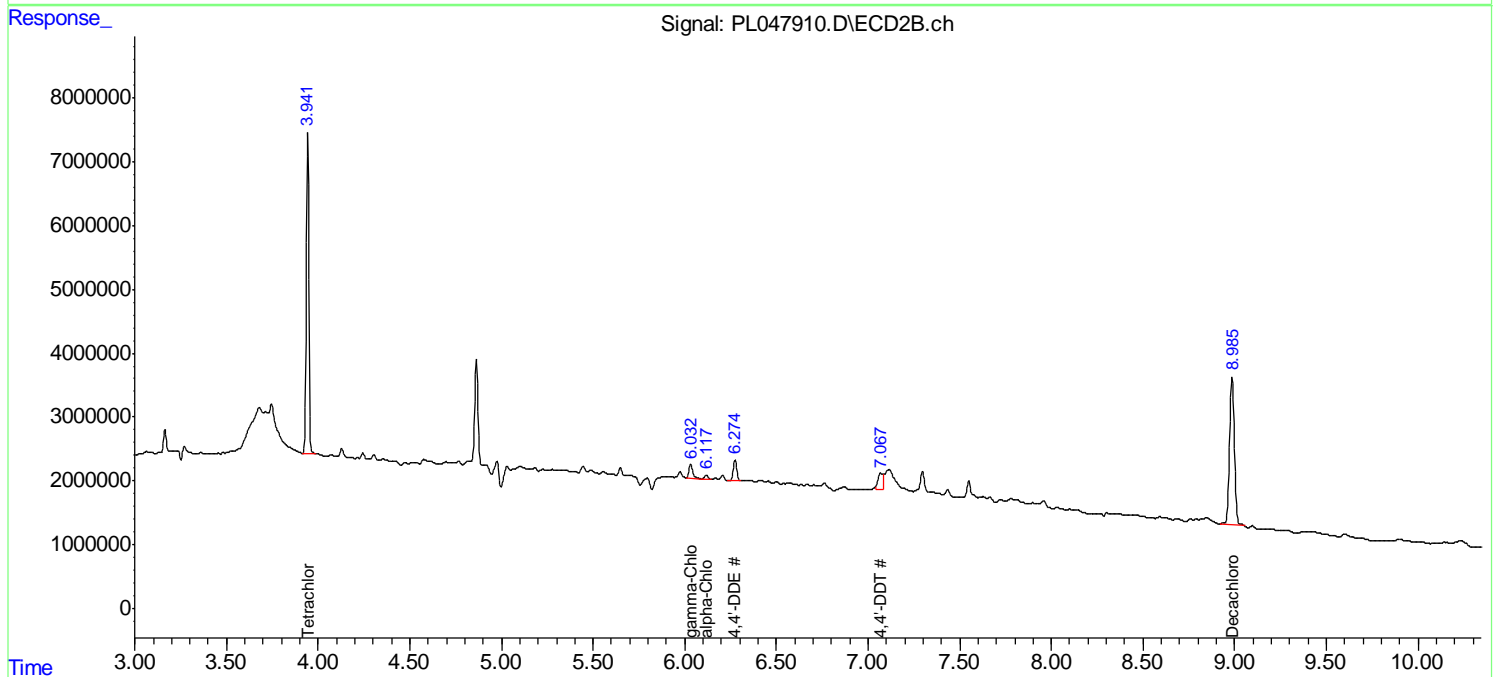
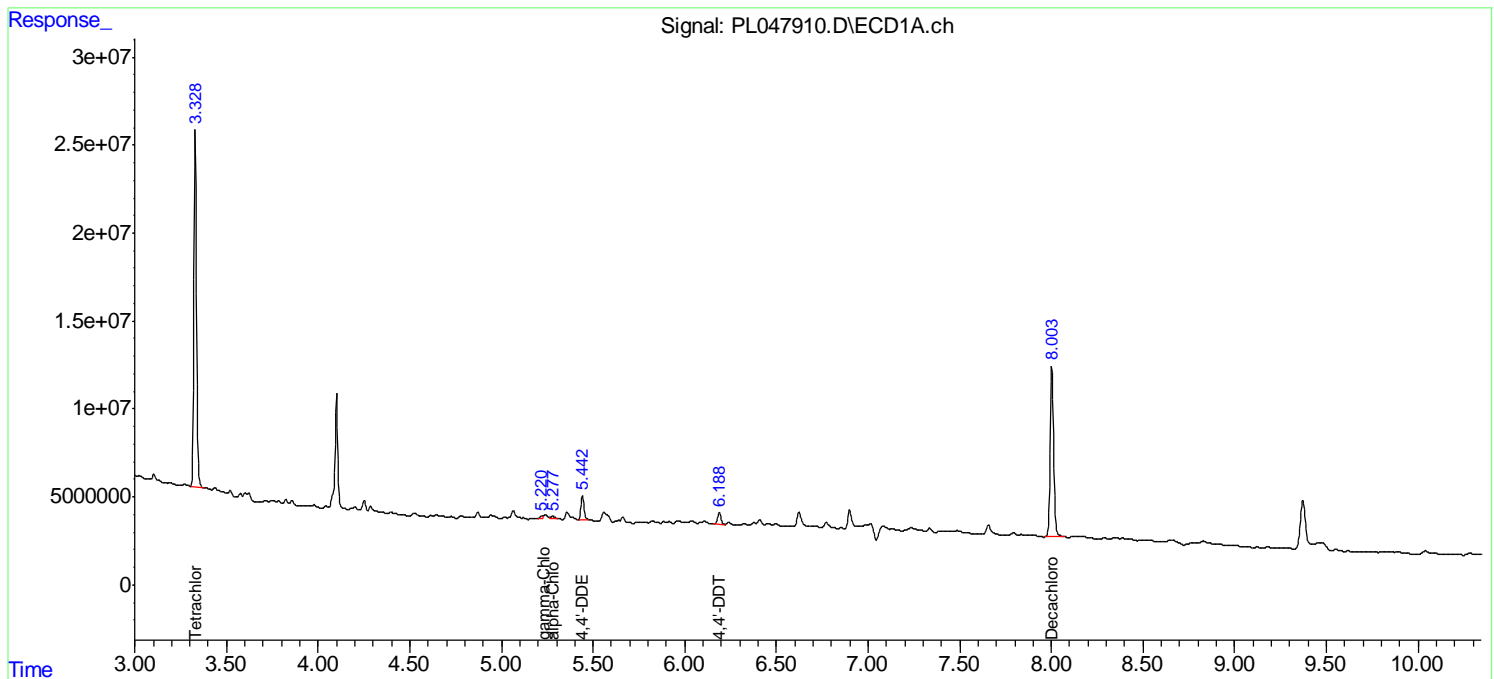
Data Path : Z:\pestpcbsrv\HPCHEM1\ECD_L\Data\PL042719\
 Data File : PL047910.D
 Signal(s) : Signal #1: ECD1A.ch Signal #2: ECD2B.ch
 Acq On : 27 Apr 2019 05:02
 Operator : AJ\SJ
 Sample : K2587-09
 Misc :
 ALS Vial : 61 Sample Multiplier: 1

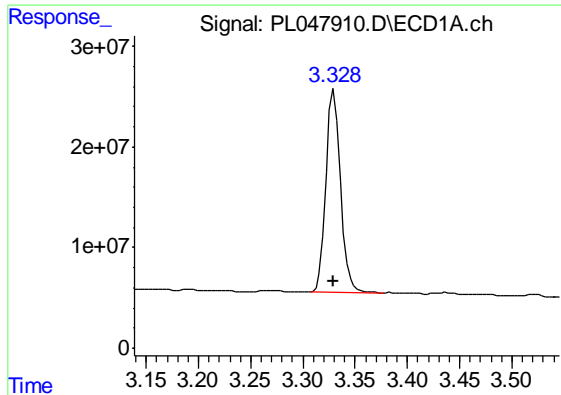
Instrument :
 ECD_L
 ClientSampleId :
 PST-004-B166-042319

Manual Integrations
APPROVED
 mohammad
 4/29/2019 4:32:44 PM

Integration File signal 1: autoint1.e
 Integration File signal 2: autoint2.e
 Quant Time: Apr 27 05:27:12 2019
 Quant Method : Z:\pestpcbsrv\HPCHEM1\ECD_L\methods\PL042419.M
 Quant Title : GC Extractables
 QLast Update : Thu Apr 25 01:53:03 2019
 Response via : Initial Calibration
 Integrator: ChemStation

Volume Inj. : 1 µl
 Signal #1 Phase : ZB-MR2 Signal #2 Phase: ZB-MR1
 Signal #1 Info : 30M x 0.32mm x0.2 Signal #2 Info : 30M x 0.32mm x0.5µm



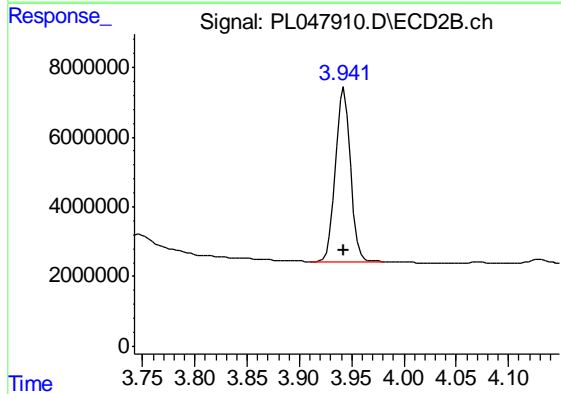


#1 Tetrachloro-m-xylene

R.T.: 3.330 min
 Delta R.T.: 0.000 min
 Response: 194380870
 Conc: 21.02 ng/ml

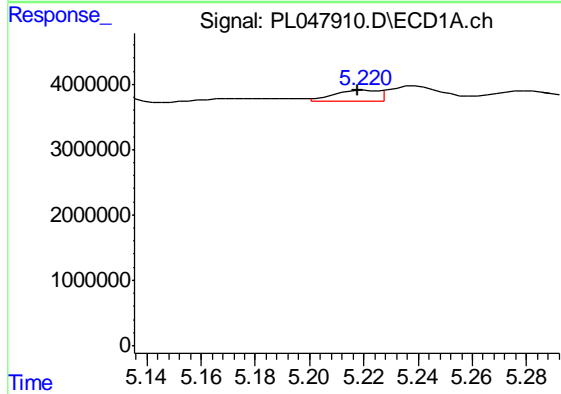
Instrument :
 ECD_L
 ClientSampleId :
 PST-004-B166-042319

Manual Integrations
 APPROVED
 mohammad
 4/29/2019 4:32:44 PM



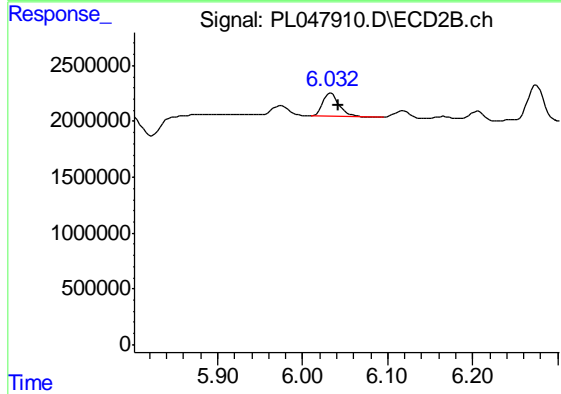
#1 Tetrachloro-m-xylene

R.T.: 3.943 min
 Delta R.T.: 0.000 min
 Response: 49913071
 Conc: 20.91 ng/ml



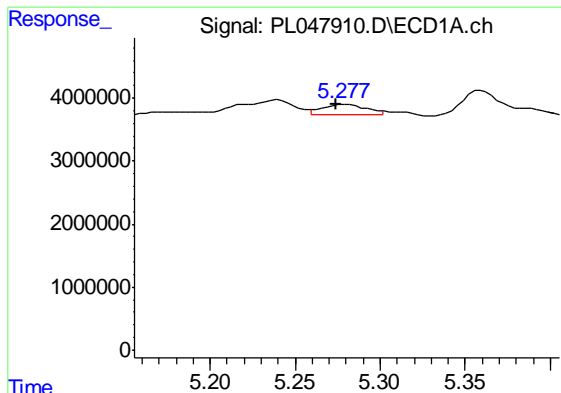
#10 gamma-Chlordane

R.T.: 5.220 min
 Delta R.T.: 0.002 min
 Response: 1985449
 Conc: 0.15 ng/ml m



#10 gamma-Chlordane

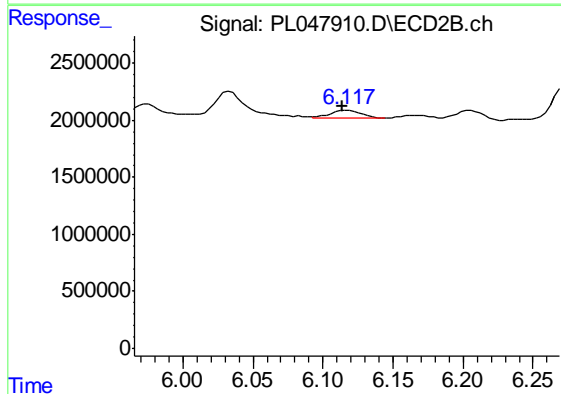
R.T.: 6.033 min
 Delta R.T.: -0.009 min
 Response: 2969945
 Conc: 0.98 ng/ml



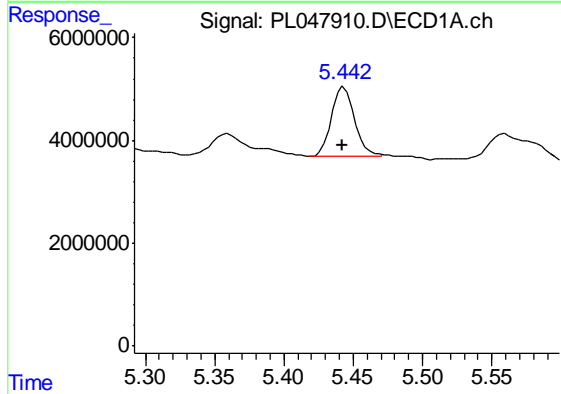
#11 alpha-Chlordane
 R.T.: 5.277 min
 Delta R.T.: 0.003 min
 Response: 2834937
 Conc: 0.22 ng/ml m

Instrument :
 ECD_L
ClientSampleId :
 PST-004-B166-042319

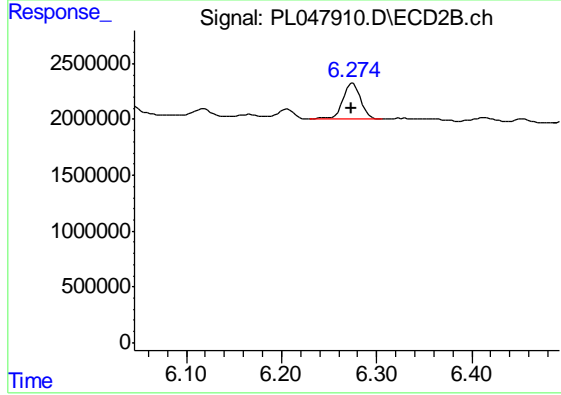
Manual Integrations
APPROVED
 mohammad
 4/29/2019 4:32:44 PM



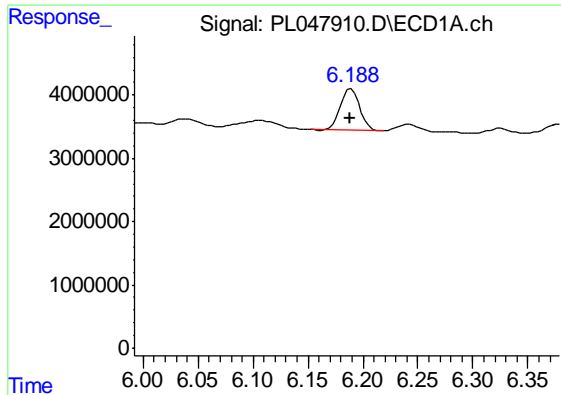
#11 alpha-Chlordane
 R.T.: 6.117 min
 Delta R.T.: 0.003 min
 Response: 1051297
 Conc: 0.35 ng/ml m



#12 4,4'-DDE
 R.T.: 5.442 min
 Delta R.T.: 0.000 min
 Response: 15888735
 Conc: 1.28 ng/ml m



#12 4,4'-DDE
 R.T.: 6.275 min
 Delta R.T.: 0.002 min
 Response: 4301594
 Conc: 1.56 ng/ml

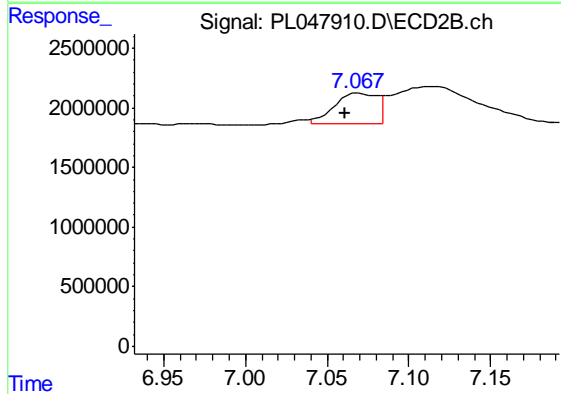


#17 4,4'-DDT

R.T.: 6.189 min
 Delta R.T.: 0.001 min
 Response: 7999683
 Conc: 0.80 ng/ml

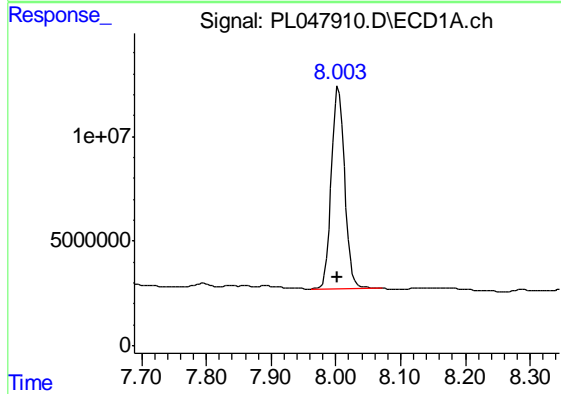
Instrument :
 ECD_L
 ClientSampleId :
 PST-004-B166-042319

Manual Integrations
 APPROVED
 mohammad
 4/29/2019 4:32:44 PM



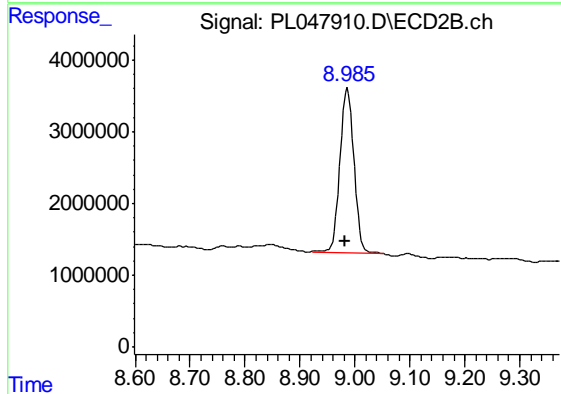
#17 4,4'-DDT

R.T.: 7.067 min
 Delta R.T.: 0.007 min
 Response: 4785848
 Conc: 2.01 ng/ml m



#28 Decachlorobiphenyl

R.T.: 8.004 min
 Delta R.T.: 0.002 min
 Response: 135739951
 Conc: 12.13 ng/ml



#28 Decachlorobiphenyl

R.T.: 8.987 min
 Delta R.T.: 0.005 min
 Response: 40935317
 Conc: 14.34 ng/ml