

Data Path : Z:\pestpcbsrv\HPCHEM1\ECD_L\Data\PL042720\
 Data File : PL058391.D
 Signal(s) : Signal #1: ECD1A.ch Signal #2: ECD2B.ch
 Acq On : 27 Apr 2020 13:56
 Operator : AJ\MA
 Sample : L2408-03RE
 Misc :
 ALS Vial : 9 Sample Multiplier: 1

Instrument :
 ECD_L
 ClientSampleId :

Integration File signal 1: autoint1.e
 Integration File signal 2: autoint2.e
 Quant Time: Apr 28 01:12:45 2020
 Quant Method : Z:\pestpcbsrv\HPCHEM1\ECD_L\methods\PL040320.M
 Quant Title : GC Extractables
 QLast Update : Sat Apr 04 06:41:11 2020
 Response via : Initial Calibration
 Integrator: ChemStation

Volume Inj. : 1 µl
 Signal #1 Phase : ZB-MR2 Signal #2 Phase: ZB-MR1
 Signal #1 Info : 30M x 0.32mm x0.2 Signal #2 Info : 30M x 0.32mm x0.5µm

	Compound	RT#1	RT#2	Resp#1	Resp#2	ng/ml	ng/ml

System Monitoring Compounds							
1)	SA Tetrachlo...	3.456	3.953	1188.1E6	23359935	117.852	10.764 #
28)	SA Decachlor...	8.204	8.976	45113780	2283007	4.376	1.022 #
Target Compounds							
2)	A alpha-BHC	3.923f	4.345	233.1E6	605.4E6	13.419	184.372 #
4)	MA Heptachlor	4.486	5.131	146.2E6	206.3E6	9.118	61.468 #
5)	MB Aldrin	4.702f	5.407f	369.6E6	85043074	25.103	26.263
6)	B beta-BHC	4.409f	0.000	863.7E6	0	136.760	N.D. #
7)	B delta-BHC	4.616f	5.036f	285.8E6	33429966	18.835	14.855
8)	B Heptachlo...	5.173	5.804	500.0E6	3061303	37.201	1.134 #
9)	A Endosulfan I	5.507	6.151f	78008829	199.0E6	6.365	66.746 #
10)	B gamma-Chl...	0.000	6.062	0	16886626	N.D.	5.212 #
11)	B alpha-Chl...	5.444	6.111	1266.6E6	98221571	95.124	30.016 #
12)	B 4,4'-DDE	5.618	6.266	68846360	34903935	5.255	11.789 #
13)	MA Dieldrin	0.000	6.414	0	109.4E6	N.D.	35.797 #
14)	MA Endrin	6.011	6.642	191.3E6	9783703	16.389	3.916 #
15)	B Endosulfa...	6.289	6.843	270.3E6	74684162	24.437	28.795
16)	A 4,4'-DDD	6.144	6.760	205.8E6	-18498208	20.591	N.D. #
18)	B Endrin al...	6.439	6.965	89103726	123.1E6	9.530	55.410 #
19)	B Endosulfa...	6.672	7.197	78152859	3112872	7.692	1.312 #
20)	A Methoxychlor	6.924	7.501f	191.3E6	11186738	34.698	8.794 #
21)	B Endrin ke...	7.139	7.690f	152.9E6	5031112	13.737	2.035 #
22)	Mirex	7.350	8.104	53839700	43471001	6.568	23.643 #
23)	Chlordane-1	4.317	0.000	428.9E6	0	1159.589	N.D. #
24)	Chlordane-2	4.811f	5.407	96888610	85043074	239.992	814.912 #
25)	Chlordane-3	0.000	6.062	0	16886626	N.D.	39.029 #
26)	Chlordane-4	5.444	6.111	1266.6E6	98221571	1217.675	187.111 #
27)	Chlordane-5	6.289	6.920	270.3E6	50866211	714.624	596.589

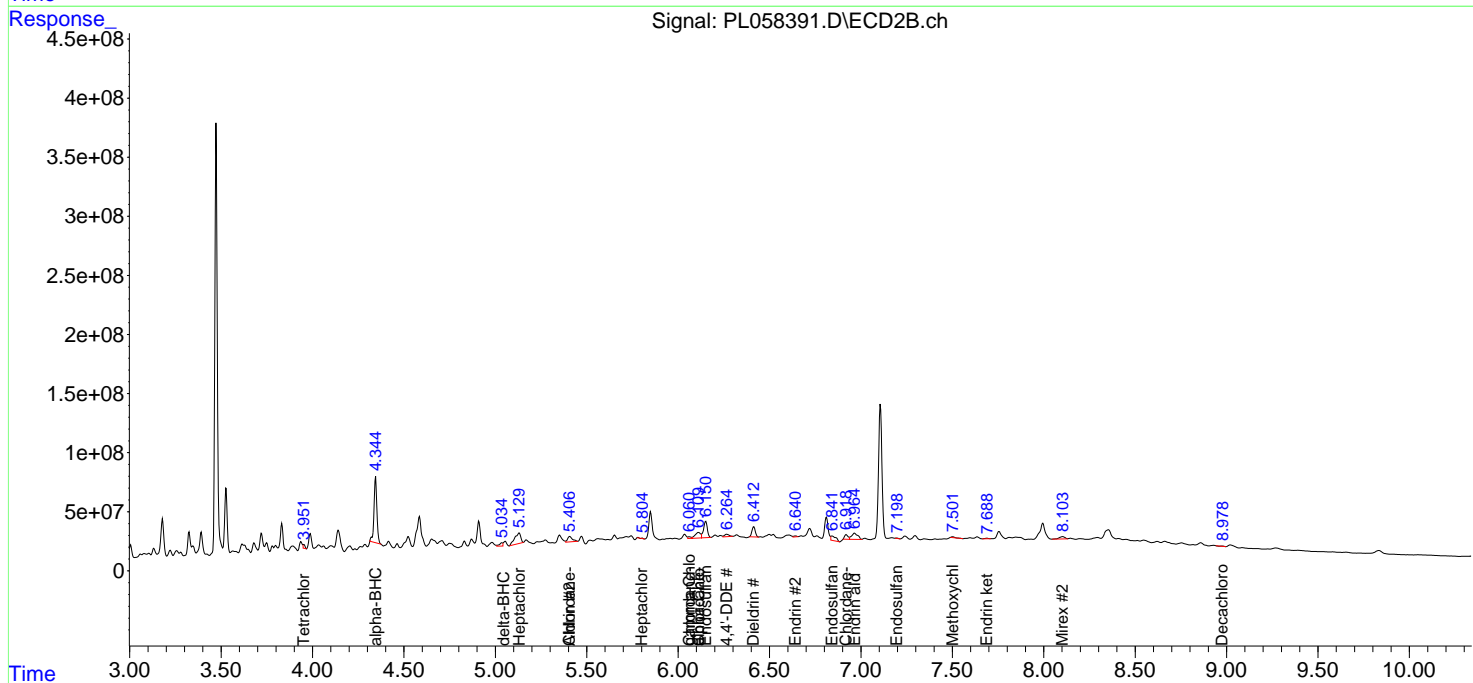
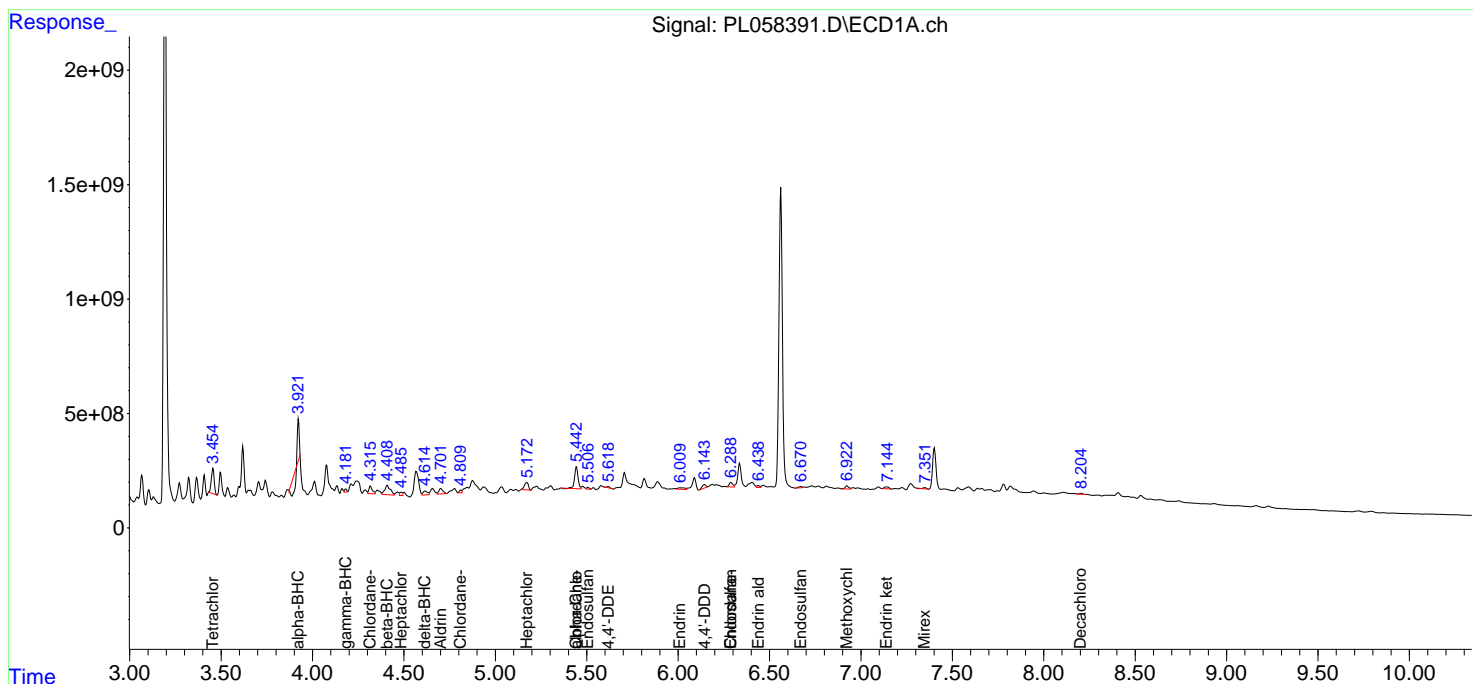
(f)=RT Delta > 1/2 Window (#)=Amounts differ by > 25% (m)=manual int.

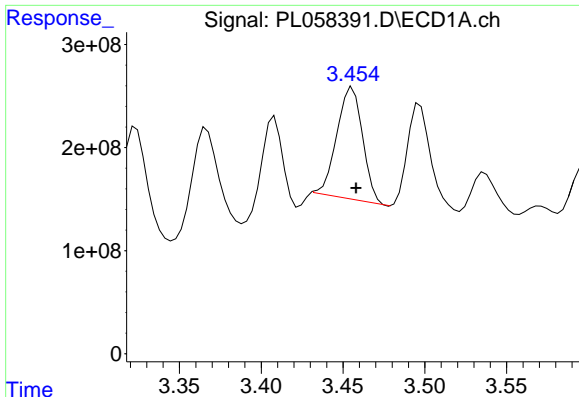
Data Path : Z:\pestpcbsrv\HPCHEM1\ECD_L\Data\PL042720\
 Data File : PL058391.D
 Signal(s) : Signal #1: ECD1A.ch Signal #2: ECD2B.ch
 Acq On : 27 Apr 2020 13:56
 Operator : AJ\MA
 Sample : L2408-03RE
 Misc :
 ALS Vial : 9 Sample Multiplier: 1

Instrument :
 ECD_L
 ClientSampled :

Integration File signal 1: autoint1.e
 Integration File signal 2: autoint2.e
 Quant Time: Apr 28 01:12:45 2020
 Quant Method : Z:\pestpcbsrv\HPCHEM1\ECD_L\methods\PL040320.M
 Quant Title : GC Extractables
 QLast Update : Sat Apr 04 06:41:11 2020
 Response via : Initial Calibration
 Integrator: ChemStation

Volume Inj. : 1 µl
 Signal #1 Phase : ZB-MR2 Signal #2 Phase: ZB-MR1
 Signal #1 Info : 30M x 0.32mm x0.2 Signal #2 Info : 30M x 0.32mm x0.5µm

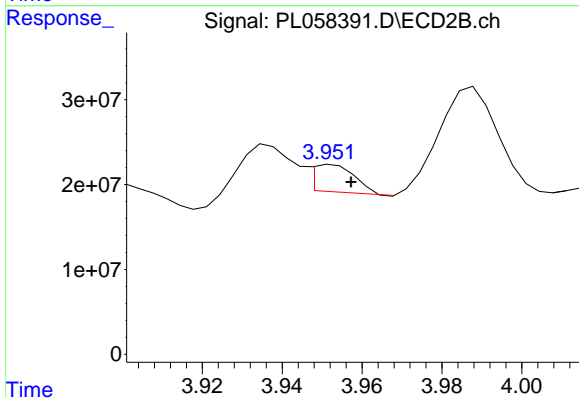




#1 Tetrachloro-m-xylene

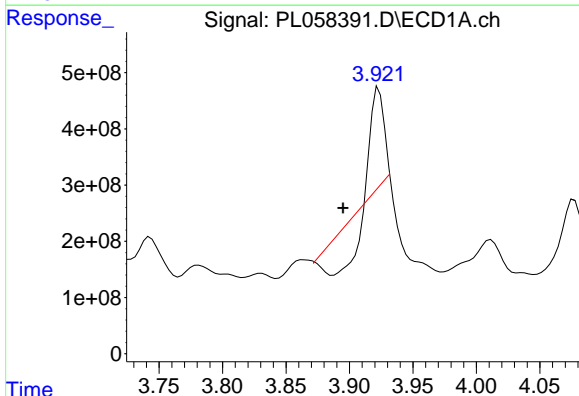
R.T.: 3.456 min
Delta R.T.: -0.002 min
Response: 1188070407
Conc: 117.85 ng/ml

Instrument :
ECD_L
ClientSampleId :



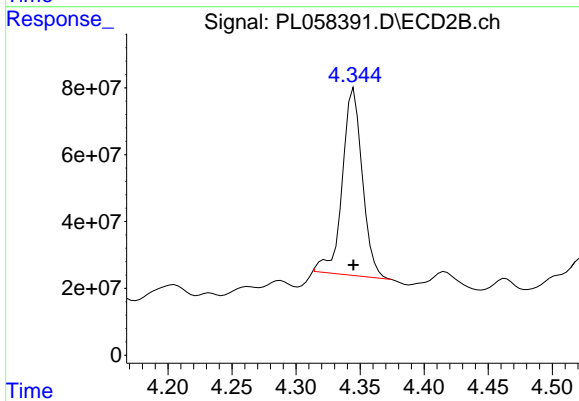
#1 Tetrachloro-m-xylene

R.T.: 3.953 min
Delta R.T.: -0.005 min
Response: 23359935
Conc: 10.76 ng/ml



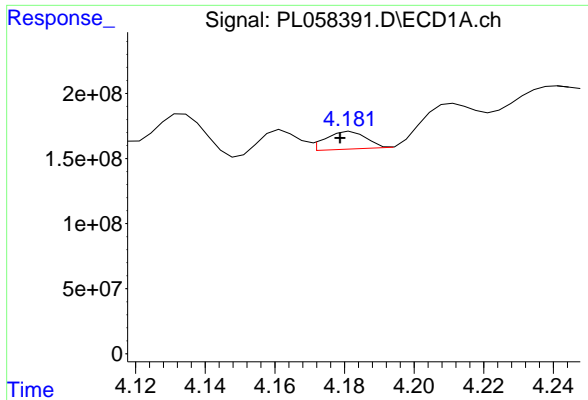
#2 alpha-BHC

R.T.: 3.923 min
Delta R.T.: 0.028 min
Response: 233104579
Conc: 13.42 ng/ml



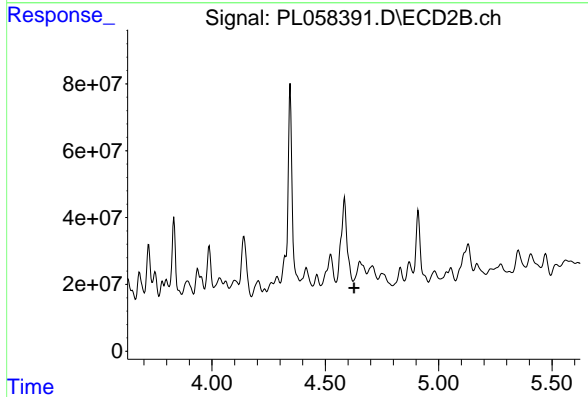
#2 alpha-BHC

R.T.: 4.345 min
Delta R.T.: 0.000 min
Response: 605415080
Conc: 184.37 ng/ml

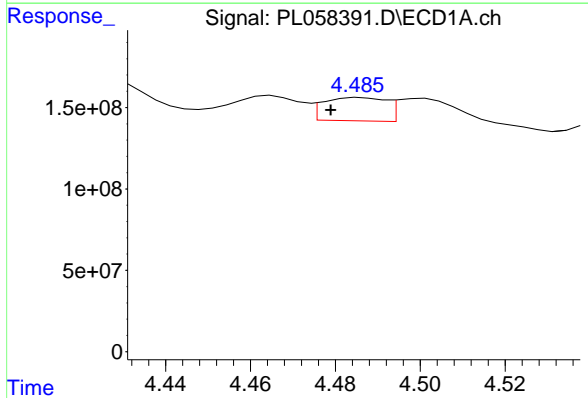


#3 gamma-BHC (Lindane)
 R.T.: 4.182 min
 Delta R.T.: 0.004 min
 Response: 108988923
 Conc: 7.50 ng/ml

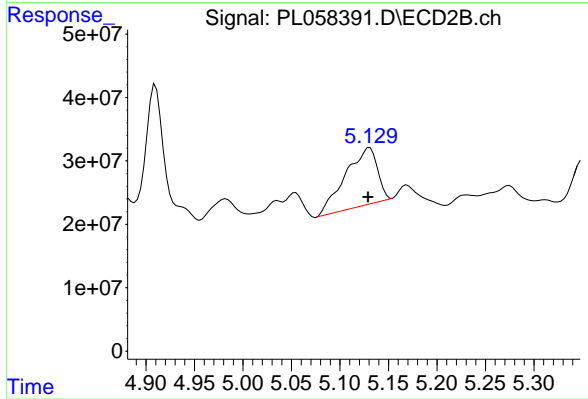
Instrument :
 ECD_L
 ClientSampled :



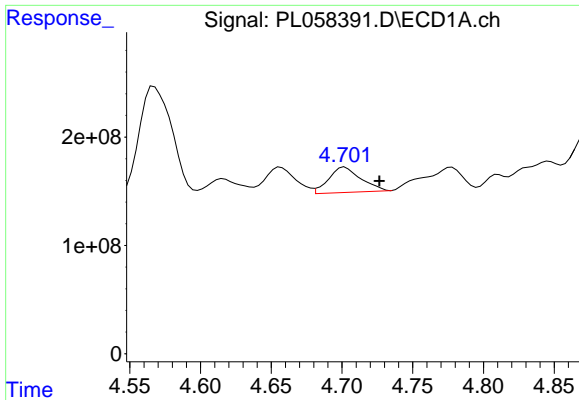
#3 gamma-BHC (Lindane)
 R.T.: 4.653 min
 Delta R.T.: 0.026 min
 Response: -36409458
 Conc: N.D.



#4 Heptachlor
 R.T.: 4.486 min
 Delta R.T.: 0.007 min
 Response: 146160018
 Conc: 9.12 ng/ml

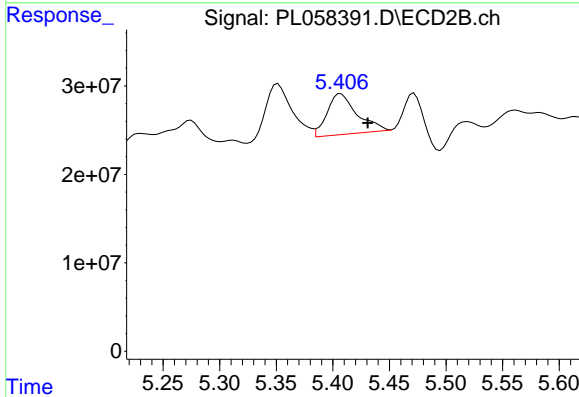


#4 Heptachlor
 R.T.: 5.131 min
 Delta R.T.: 0.002 min
 Response: 206294920
 Conc: 61.47 ng/ml

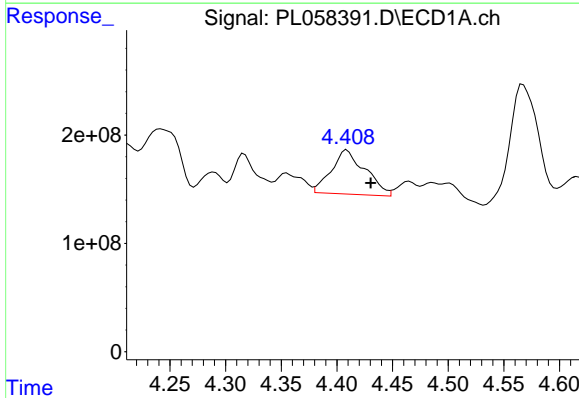


#5 Aldrin
 R.T.: 4.702 min
 Delta R.T.: -0.025 min
 Response: 369642583
 Conc: 25.10 ng/ml

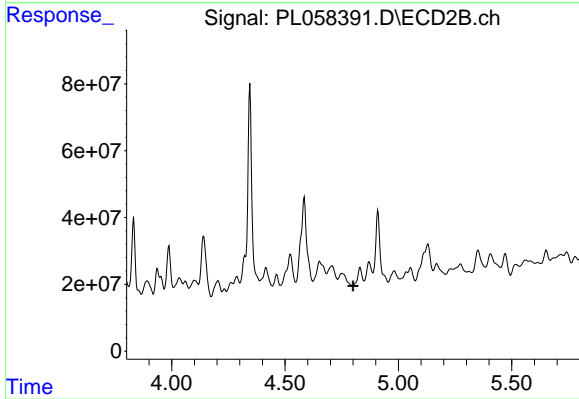
Instrument :
 ECD_L
 ClientSampleId :



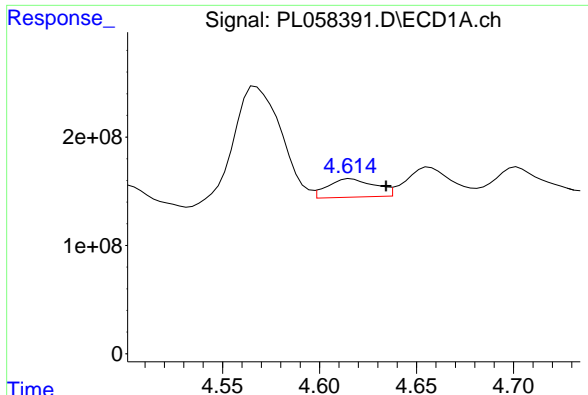
#5 Aldrin
 R.T.: 5.407 min
 Delta R.T.: -0.024 min
 Response: 85043074
 Conc: 26.26 ng/ml



#6 beta-BHC
 R.T.: 4.409 min
 Delta R.T.: -0.021 min
 Response: 863680261
 Conc: 136.76 ng/ml

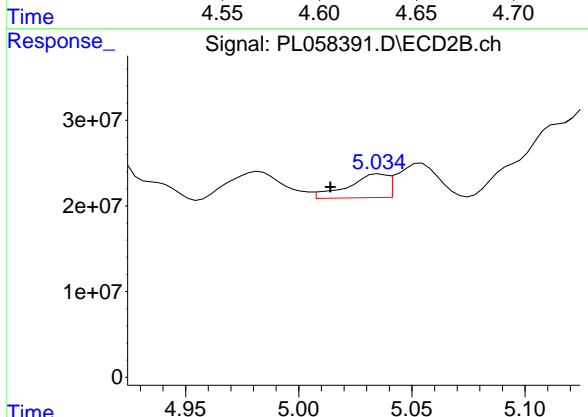


#6 beta-BHC
 R.T.: 0.000 min
 Exp R.T. : 4.800 min
 Response: 0
 Conc: N.D.

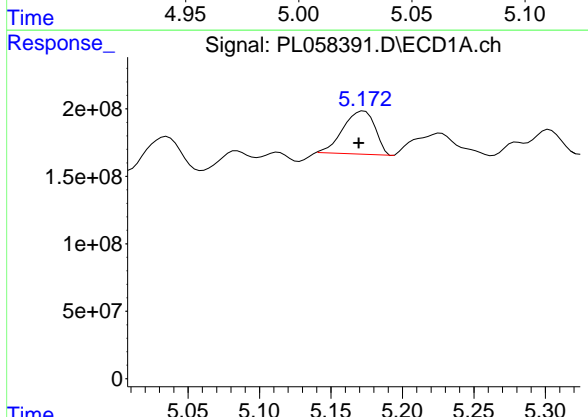


#7 delta-BHC
 R.T.: 4.616 min
 Delta R.T.: -0.018 min
 Response: 285836148
 Conc: 18.83 ng/ml

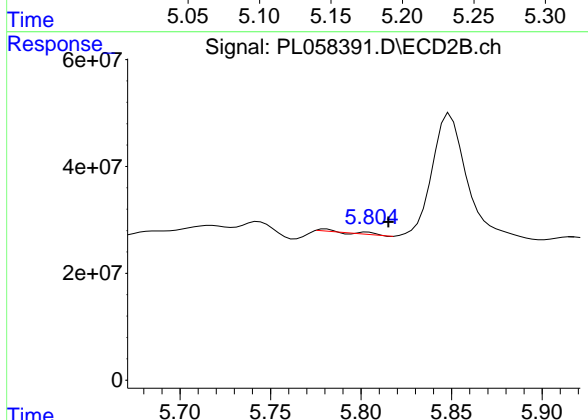
Instrument :
 ECD_L
 ClientSampled :



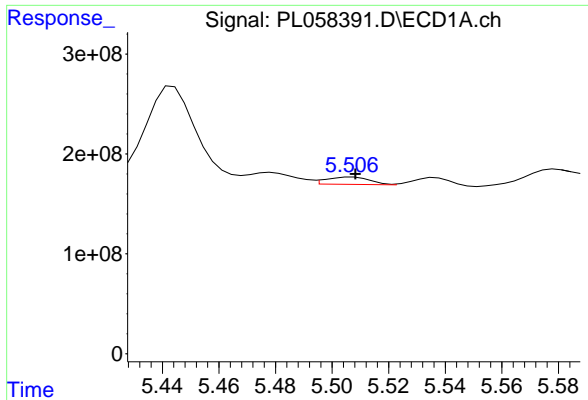
#7 delta-BHC
 R.T.: 5.036 min
 Delta R.T.: 0.022 min
 Response: 33429966
 Conc: 14.85 ng/ml



#8 Heptachlor epoxide
 R.T.: 5.173 min
 Delta R.T.: 0.004 min
 Response: 499982841
 Conc: 37.20 ng/ml

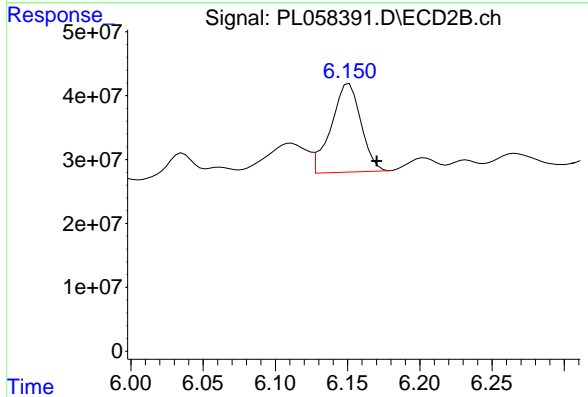


#8 Heptachlor epoxide
 R.T.: 5.804 min
 Delta R.T.: -0.011 min
 Response: 3061303
 Conc: 1.13 ng/ml

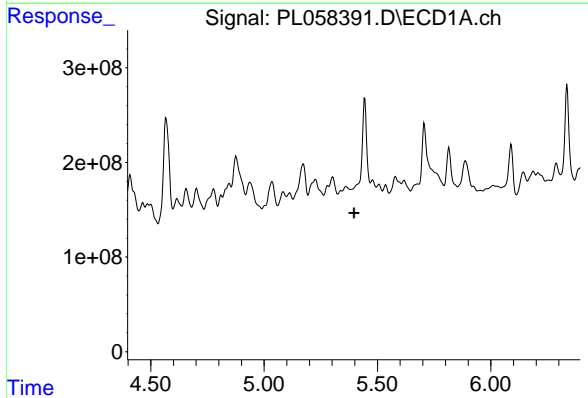


#9 Endosulfan I
 R.T.: 5.507 min
 Delta R.T.: 0.000 min
 Response: 78008829
 Conc: 6.36 ng/ml

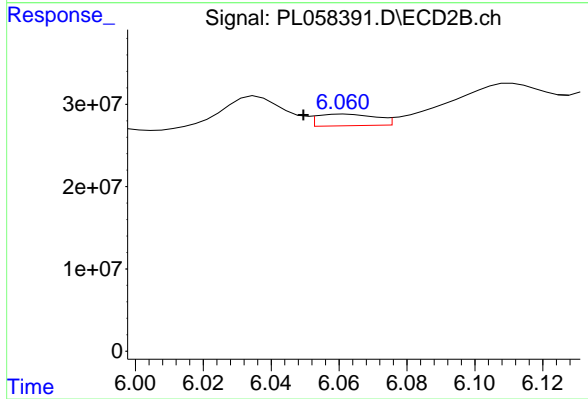
Instrument :
 ECD_L
 ClientSampled :



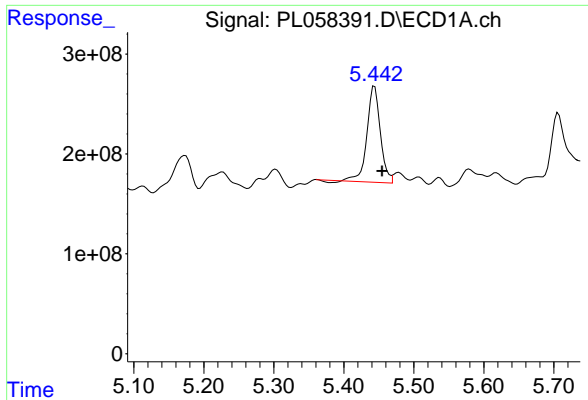
#9 Endosulfan I
 R.T.: 6.151 min
 Delta R.T.: -0.019 min
 Response: 199021757
 Conc: 66.75 ng/ml



#10 gamma-Chlordane
 R.T.: 0.000 min
 Exp R.T. : 5.397 min
 Response: 0
 Conc: N.D.

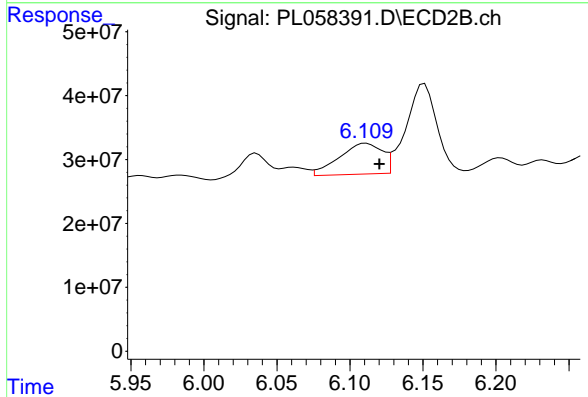


#10 gamma-Chlordane
 R.T.: 6.062 min
 Delta R.T.: 0.012 min
 Response: 16886626
 Conc: 5.21 ng/ml

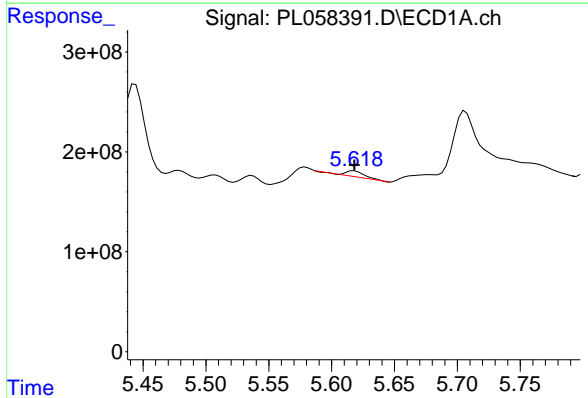


#11 alpha-Chlordane
 R.T.: 5.444 min
 Delta R.T.: -0.011 min
 Response: 1266637447
 Conc: 95.12 ng/ml

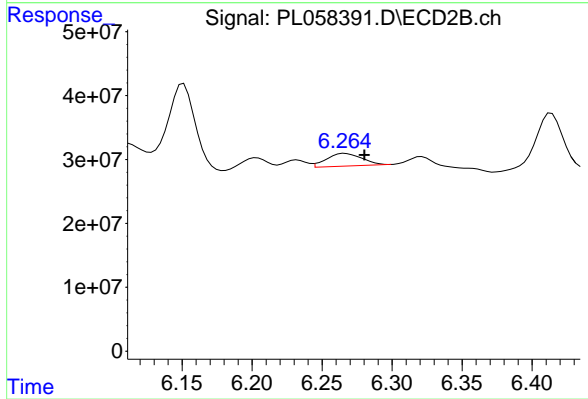
Instrument :
 ECD_L
 ClientSampled :



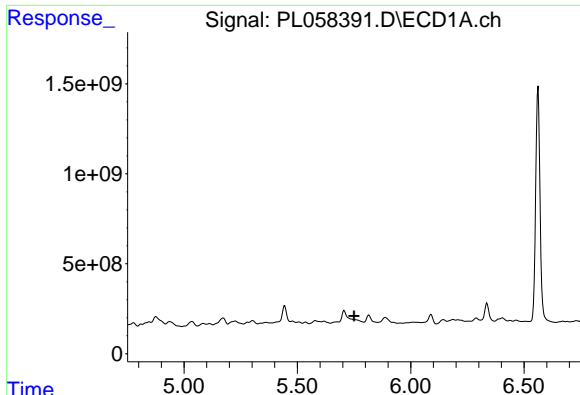
#11 alpha-Chlordane
 R.T.: 6.111 min
 Delta R.T.: -0.009 min
 Response: 98221571
 Conc: 30.02 ng/ml



#12 4,4'-DDE
 R.T.: 5.618 min
 Delta R.T.: 0.000 min
 Response: 68846360
 Conc: 5.26 ng/ml



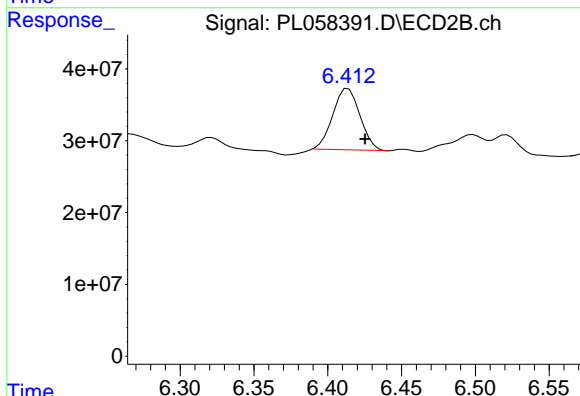
#12 4,4'-DDE
 R.T.: 6.266 min
 Delta R.T.: -0.014 min
 Response: 34903935
 Conc: 11.79 ng/ml



#13 Dieldrin

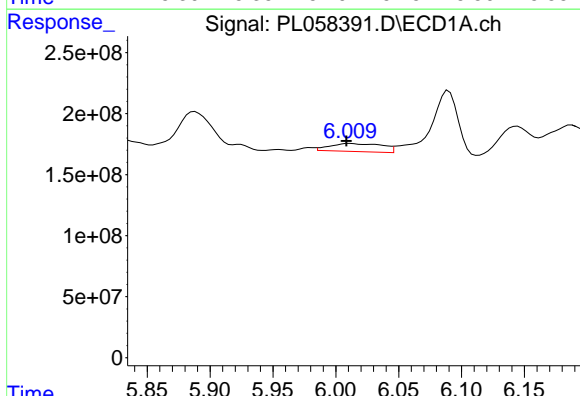
R.T.: 0.000 min
 Exp R.T.: 5.751 min
 Response: 0
 Conc: N.D.

Instrument :
 ECD_L
 ClientSampled :



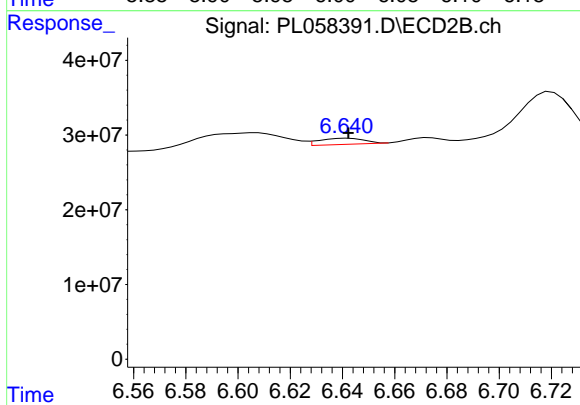
#13 Dieldrin

R.T.: 6.414 min
 Delta R.T.: -0.012 min
 Response: 109383341
 Conc: 35.80 ng/ml



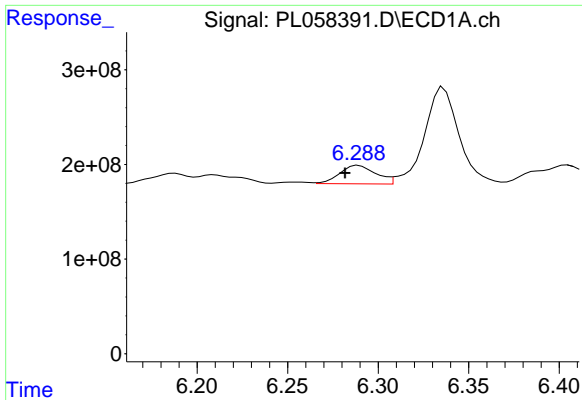
#14 Endrin

R.T.: 6.011 min
 Delta R.T.: 0.002 min
 Response: 191303580
 Conc: 16.39 ng/ml



#14 Endrin

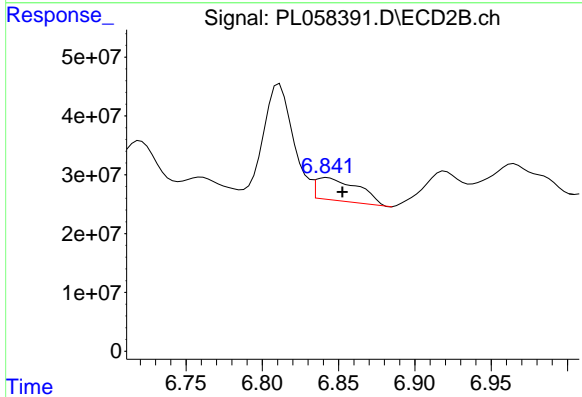
R.T.: 6.642 min
 Delta R.T.: 0.000 min
 Response: 9783703
 Conc: 3.92 ng/ml



#15 Endosulfan II

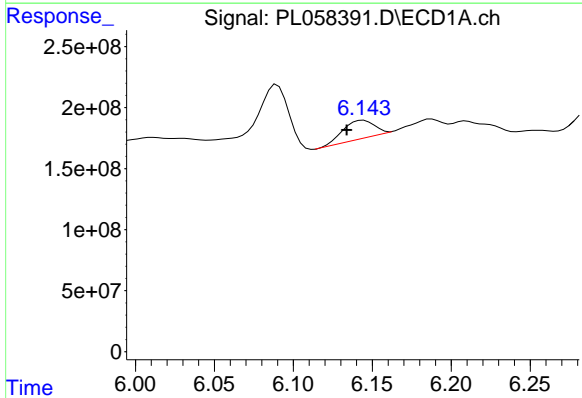
R.T.: 6.289 min
 Delta R.T.: 0.007 min
 Response: 270324661
 Conc: 24.44 ng/ml

Instrument :
 ECD_L
 ClientSampleId :



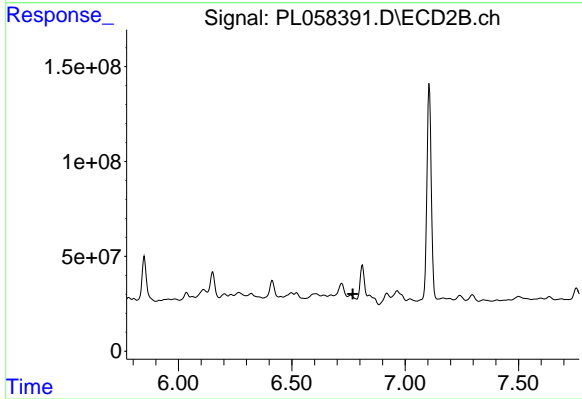
#15 Endosulfan II

R.T.: 6.843 min
 Delta R.T.: -0.010 min
 Response: 74684162
 Conc: 28.80 ng/ml



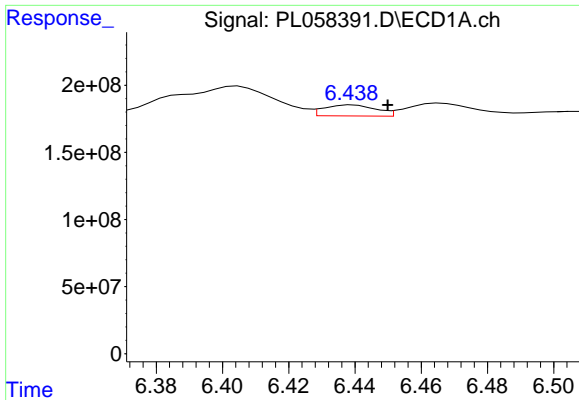
#16 4,4'-DDD

R.T.: 6.144 min
 Delta R.T.: 0.011 min
 Response: 205795312
 Conc: 20.59 ng/ml



#16 4,4'-DDD

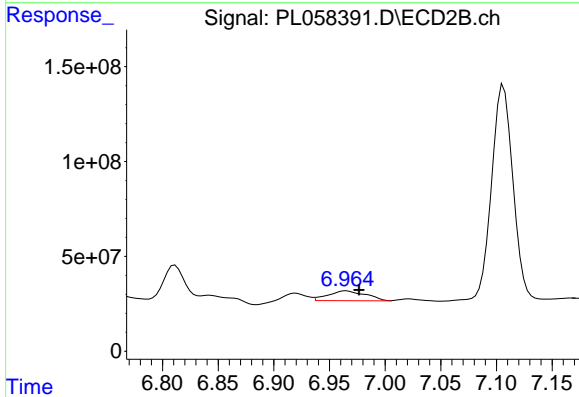
R.T.: 6.760 min
 Delta R.T.: -0.009 min
 Response: -18498208
 Conc: N.D.



#18 Endrin aldehyde

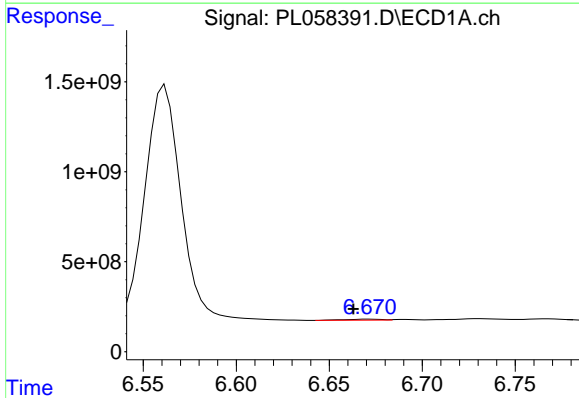
R.T.: 6.439 min
 Delta R.T.: -0.010 min
 Response: 89103726
 Conc: 9.53 ng/ml

Instrument :
 ECD_L
 ClientSampled :



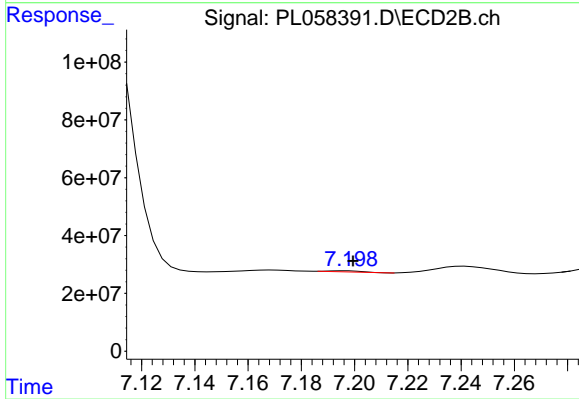
#18 Endrin aldehyde

R.T.: 6.965 min
 Delta R.T.: -0.011 min
 Response: 123101621
 Conc: 55.41 ng/ml



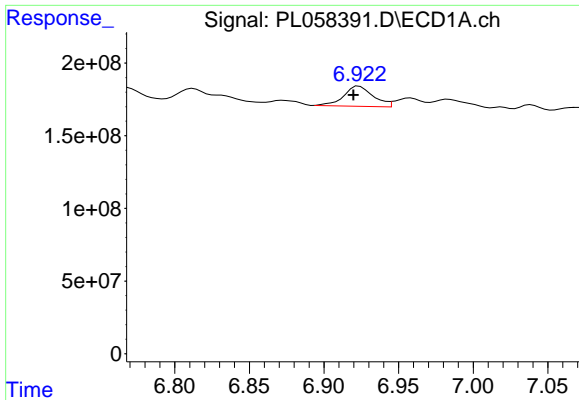
#19 Endosulfan Sulfate

R.T.: 6.672 min
 Delta R.T.: 0.009 min
 Response: 78152859
 Conc: 7.69 ng/ml



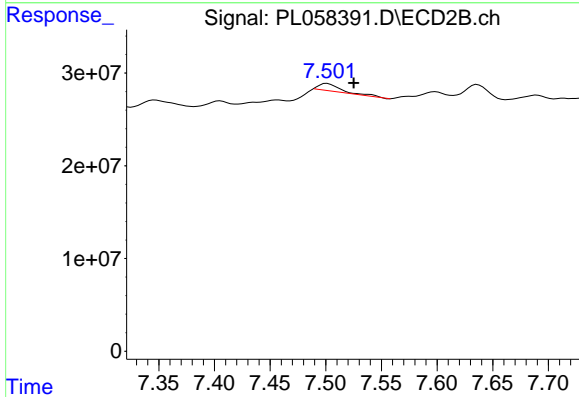
#19 Endosulfan Sulfate

R.T.: 7.197 min
 Delta R.T.: -0.002 min
 Response: 3112872
 Conc: 1.31 ng/ml

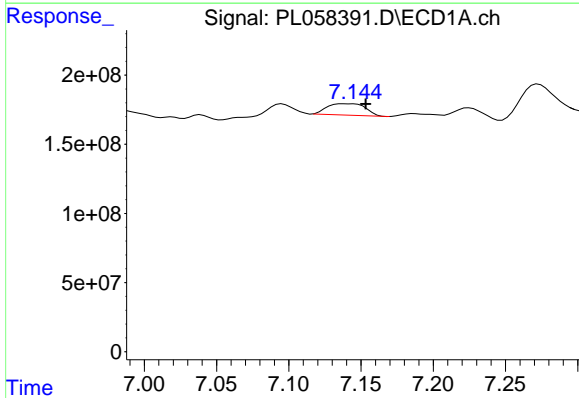


#20 Methoxychlor
 R.T.: 6.924 min
 Delta R.T.: 0.004 min
 Response: 191275534
 Conc: 34.70 ng/ml

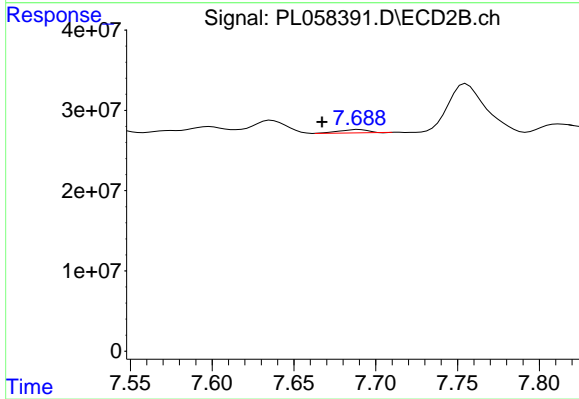
Instrument :
 ECD_L
 ClientSampleId :



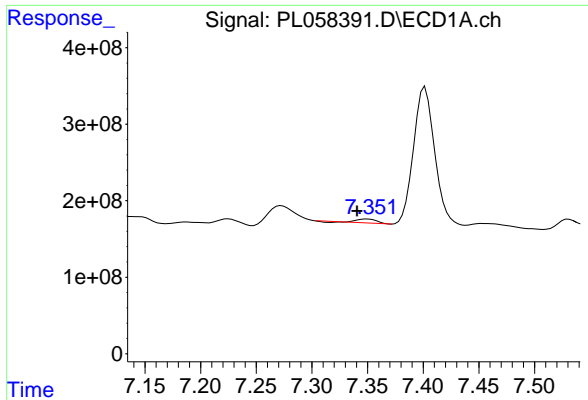
#20 Methoxychlor
 R.T.: 7.501 min
 Delta R.T.: -0.024 min
 Response: 11186738
 Conc: 8.79 ng/ml



#21 Endrin ketone
 R.T.: 7.139 min
 Delta R.T.: -0.014 min
 Response: 152936059
 Conc: 13.74 ng/ml

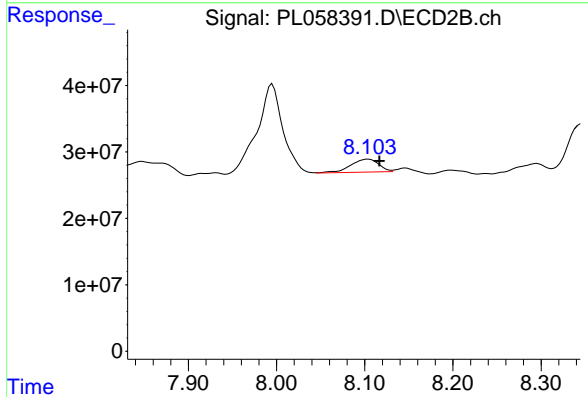


#21 Endrin ketone
 R.T.: 7.690 min
 Delta R.T.: 0.023 min
 Response: 5031112
 Conc: 2.04 ng/ml

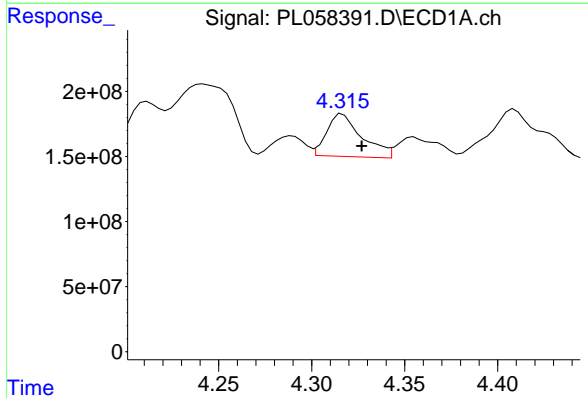


#22 Mirex
 R.T.: 7.350 min
 Delta R.T.: 0.009 min
 Response: 53839700
 Conc: 6.57 ng/ml

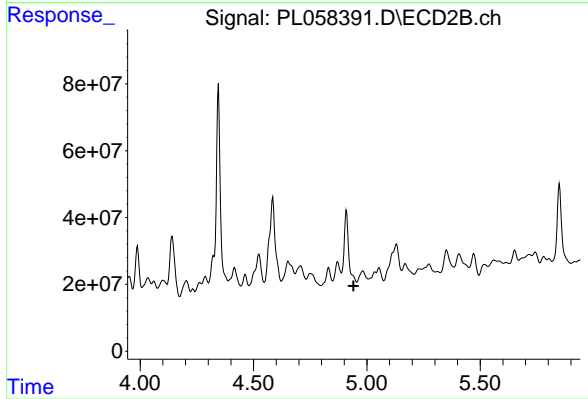
Instrument :
 ECD_L
 ClientSampled :



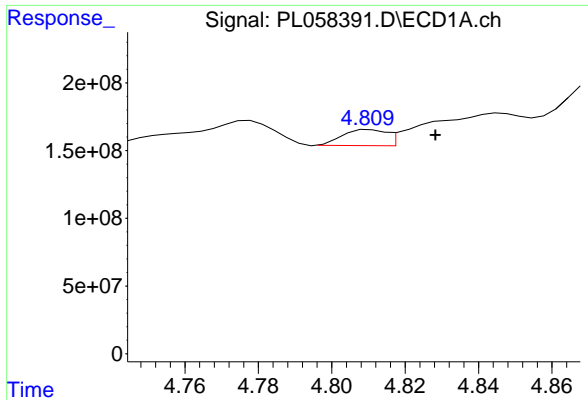
#22 Mirex
 R.T.: 8.104 min
 Delta R.T.: -0.013 min
 Response: 43471001
 Conc: 23.64 ng/ml



#23 Chlordane-1
 R.T.: 4.317 min
 Delta R.T.: -0.010 min
 Response: 428874606
 Conc: 1159.59 ng/ml

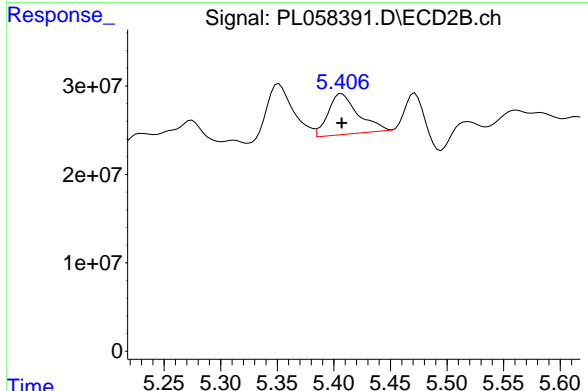


#23 Chlordane-1
 R.T.: 0.000 min
 Exp R.T. : 4.942 min
 Response: 0
 Conc: N.D.

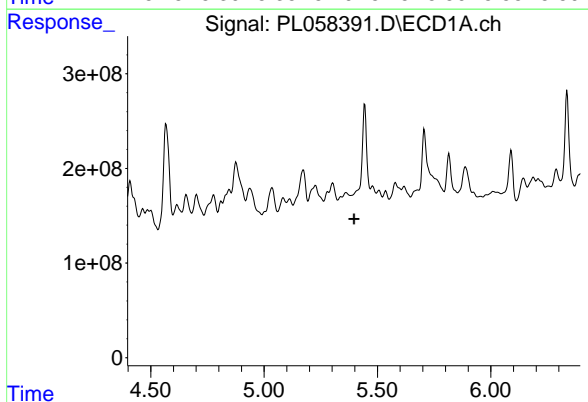


#24 Chlordane-2
 R.T.: 4.811 min
 Delta R.T.: -0.018 min
 Response: 96888610
 Conc: 239.99 ng/ml

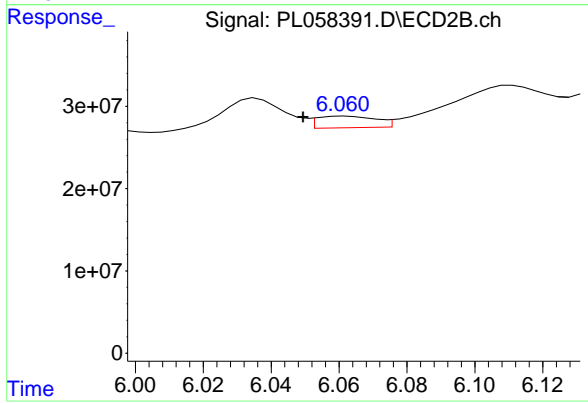
Instrument :
 ECD_L
 ClientSampleId :



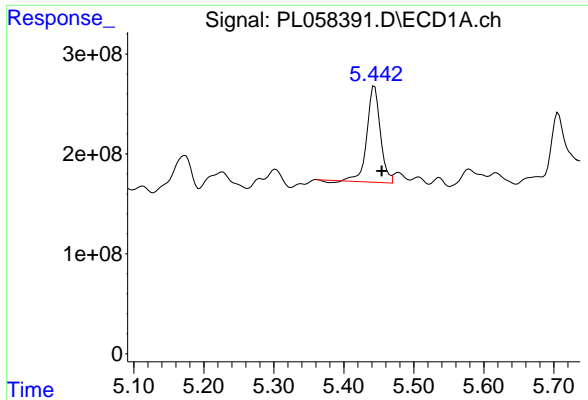
#24 Chlordane-2
 R.T.: 5.407 min
 Delta R.T.: 0.000 min
 Response: 85043074
 Conc: 814.91 ng/ml



#25 Chlordane-3
 R.T.: 0.000 min
 Exp R.T. : 5.398 min
 Response: 0
 Conc: N.D.

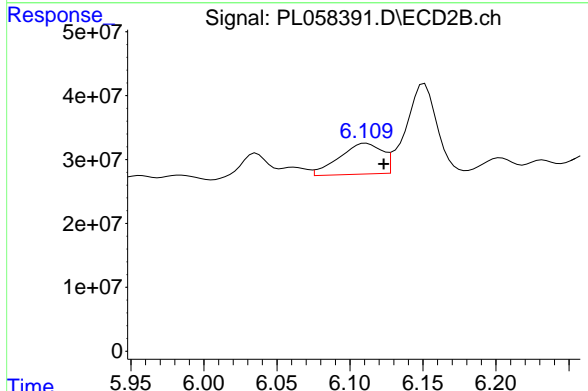


#25 Chlordane-3
 R.T.: 6.062 min
 Delta R.T.: 0.012 min
 Response: 16886626
 Conc: 39.03 ng/ml

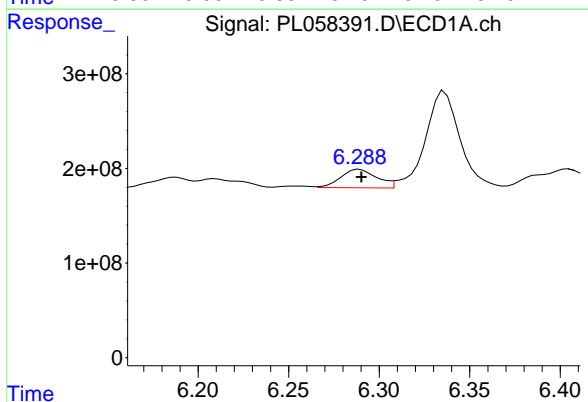


#26 Chlordane-4
 R.T.: 5.444 min
 Delta R.T.: -0.010 min
 Response: 1266637447
 Conc: 1217.68 ng/ml

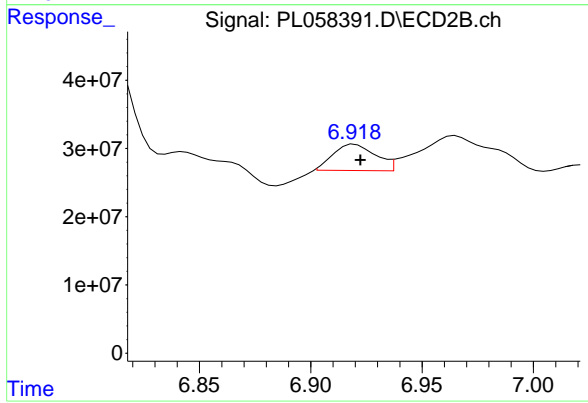
Instrument :
 ECD_L
 ClientSampleId :



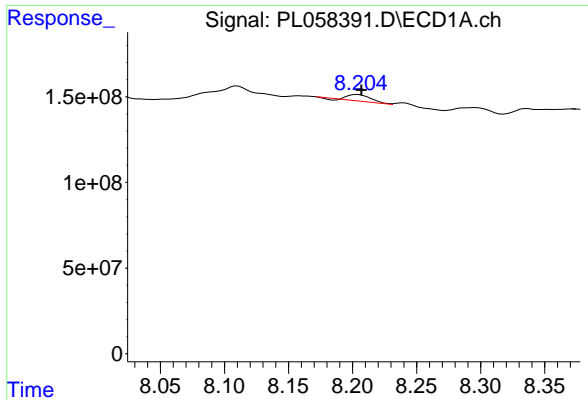
#26 Chlordane-4
 R.T.: 6.111 min
 Delta R.T.: -0.012 min
 Response: 98221571
 Conc: 187.11 ng/ml



#27 Chlordane-5
 R.T.: 6.289 min
 Delta R.T.: -0.001 min
 Response: 270324661
 Conc: 714.62 ng/ml



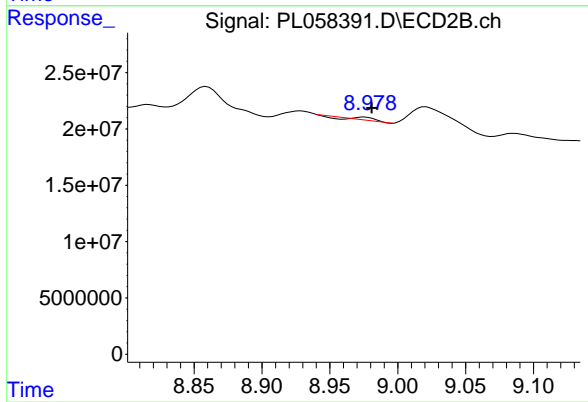
#27 Chlordane-5
 R.T.: 6.920 min
 Delta R.T.: -0.002 min
 Response: 50866211
 Conc: 596.59 ng/ml



#28 Decachlorobiphenyl

R.T.: 8.204 min
Delta R.T.: -0.003 min
Response: 45113780
Conc: 4.38 ng/ml

Instrument :
ECD_L
ClientSampleId :



#28 Decachlorobiphenyl

R.T.: 8.976 min
Delta R.T.: -0.005 min
Response: 2283007
Conc: 1.02 ng/ml