

Data Path : Z:\pestpcbsrv\HPCHEM1\ECD_L\Data\PL042720\
 Data File : PL058396.D
 Signal(s) : Signal #1: ECD1A.ch Signal #2: ECD2B.ch
 Acq On : 27 Apr 2020 16:48
 Operator : AJ\MA
 Sample : PSTDCCC050
 Misc :
 ALS Vial : 4 Sample Multiplier: 1

Instrument :
 ECD_L
 ClientSampleId :
 PSTDCCC050

Integration File signal 1: autoint1.e
 Integration File signal 2: autoint2.e
 Quant Time: Apr 28 01:13:56 2020
 Quant Method : Z:\pestpcbsrv\HPCHEM1\ECD_L\methods\PL040320.M
 Quant Title : GC Extractables
 QLast Update : Sat Apr 04 06:41:11 2020
 Response via : Initial Calibration
 Integrator: ChemStation

Volume Inj. : 1 µl
 Signal #1 Phase : ZB-MR2 Signal #2 Phase: ZB-MR1
 Signal #1 Info : 30M x 0.32mm x0.2 Signal #2 Info : 30M x 0.32mm x0.5µm

	Compound	RT#1	RT#2	Resp#1	Resp#2	ng/ml	ng/ml

System Monitoring Compounds							
1)	SA Tetrachlo...	3.456	3.954	553.6E6	112.0E6	54.915	51.625
28)	SA Decachlor...	8.201	8.974	461.7E6	97367886	44.792	43.589
Target Compounds							
2)	A alpha-BHC	3.892	4.342	958.6E6	176.3E6	55.180	53.704
3)	MA gamma-BHC...	4.176	4.624	886.5E6	173.4E6	60.989	53.384
4)	MA Heptachlor	4.475	5.125	875.8E6	173.3E6	54.633	51.643
5)	MB Aldrin	4.723	5.427	852.8E6	170.7E6	57.913	52.719
6)	B beta-BHC	4.428	4.798	360.0E6	75543236	57.006	54.403
7)	B delta-BHC	4.631	5.011	882.9E6	165.6E6	58.175	65.584
8)	B Heptachlo...	5.165	5.812	757.4E6	162.7E6	56.352	60.244
9)	A Endosulfan I	5.504	6.165	703.7E6	149.3E6	57.417	50.061
10)	B gamma-Chl...	5.393	6.045	770.9E6	164.3E6	56.765	50.697
11)	B alpha-Chl...	5.451	6.117	754.7E6	163.7E6	56.675	50.036
12)	B 4,4'-DDE	5.615	6.276	740.9E6	148.1E6	56.559	50.025
13)	MA Dieldrin	5.747	6.421	737.2E6	153.0E6	56.667	50.076
14)	MA Endrin	6.004	6.638	604.0E6	117.5E6	51.741	47.019
15)	B Endosulfa...	6.277	6.849	589.0E6	122.5E6	53.246	47.242
16)	A 4,4'-DDD	6.130	6.765	590.6E6	118.5E6	59.088	51.924
17)	MA 4,4'-DDT	6.370	7.061	471.6E6	90638976	46.465	40.693
18)	B Endrin al...	6.446	6.972	486.3E6	102.9E6	52.011	46.324
19)	B Endosulfa...	6.659	7.194	541.0E6	111.1E6	53.253	46.799
20)	A Methoxychlor	6.915	7.521	240.8E6	50985658	43.683	40.083
21)	B Endrin ke...	7.149	7.662	582.3E6	119.4E6	52.306	48.298
22)	Mirex	7.335	8.111	387.0E6	84612195	47.216	46.019
23)	Chlordane-1	4.352f	0.000	3782599	0	10.227	N.D. #
24)	Chlordane-2	4.832	5.427f	2271667	170.7E6	5.627	1635.837 #
25)	Chlordane-3	5.393	6.045	770.9E6	164.3E6	630.563	379.622 #
26)	Chlordane-4	5.451	6.117	754.7E6	163.7E6	725.489	311.911 #
27)	Chlordane-5	6.277	0.000	589.0E6	0	1557.106	N.D. #

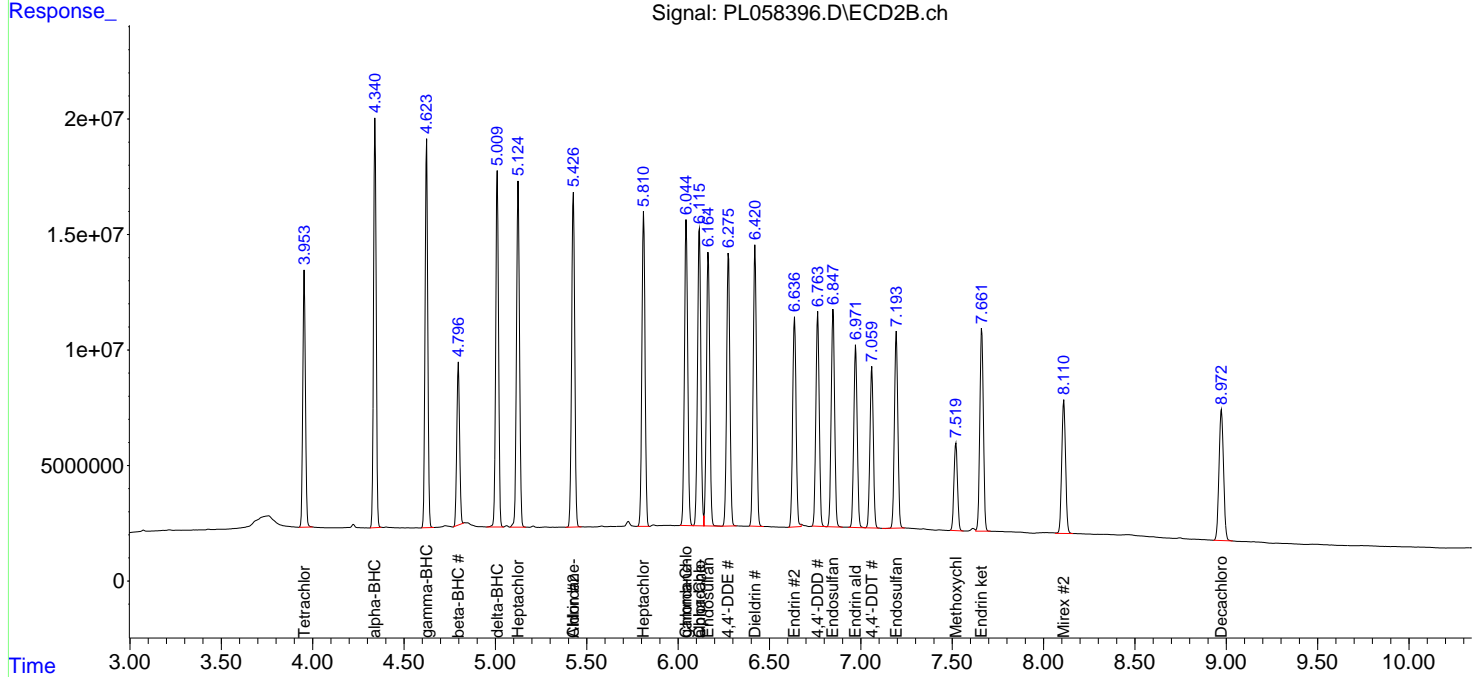
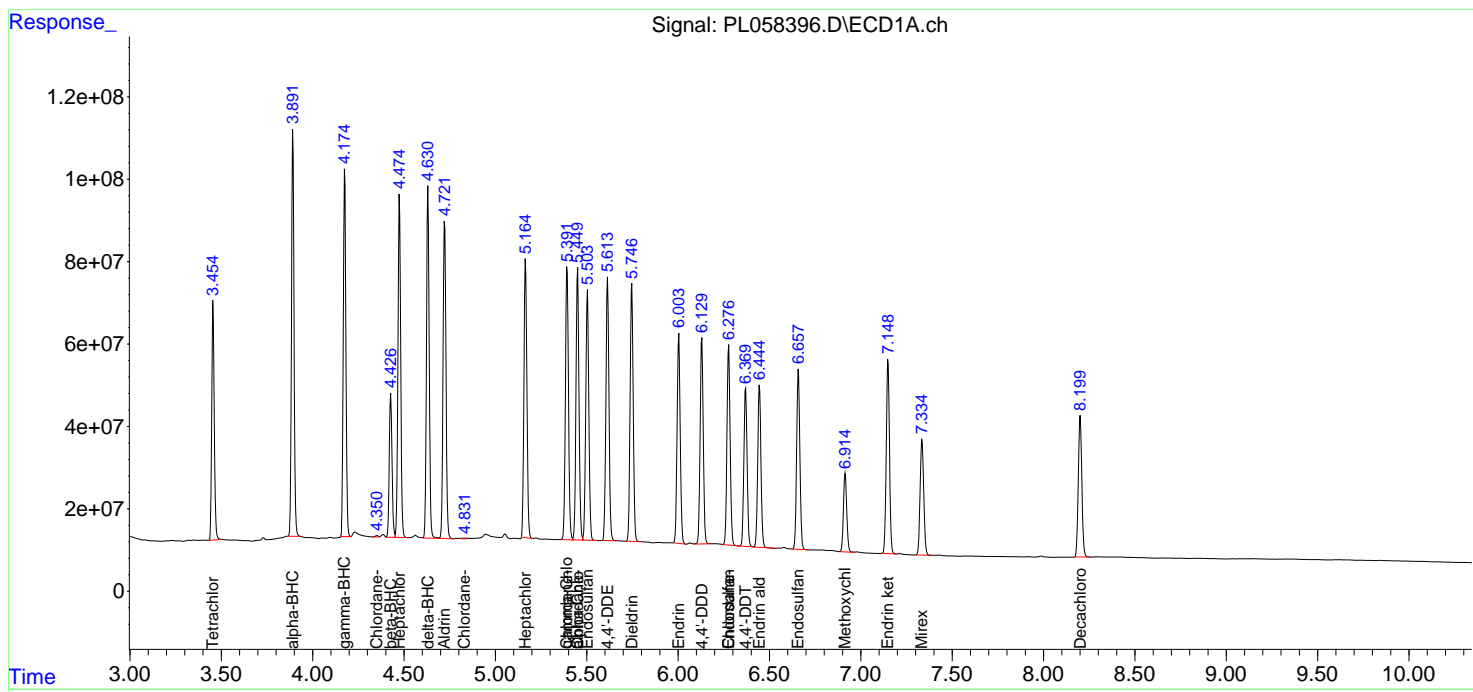
(f)=RT Delta > 1/2 Window (#)=Amounts differ by > 25% (m)=manual int.

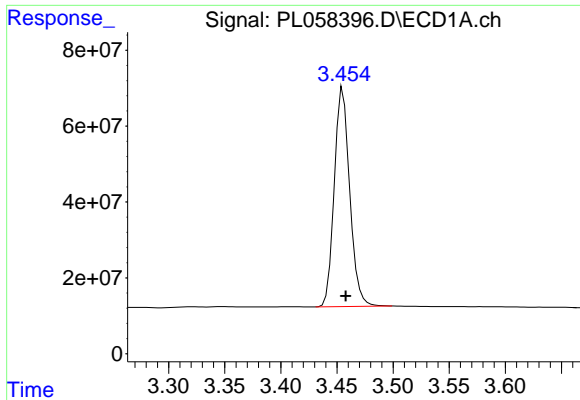
Data Path : Z:\pestpcbsrv\HPCHEM1\ECD_L\Data\PL042720\
 Data File : PL058396.D
 Signal(s) : Signal #1: ECD1A.ch Signal #2: ECD2B.ch
 Acq On : 27 Apr 2020 16:48
 Operator : AJ\MA
 Sample : PSTDCCC050
 Misc :
 ALS Vial : 4 Sample Multiplier: 1

Instrument :
 ECD_L
 ClientSampled :
 PSTDCCC050

Integration File signal 1: autoint1.e
 Integration File signal 2: autoint2.e
 Quant Time: Apr 28 01:13:56 2020
 Quant Method : Z:\pestpcbsrv\HPCHEM1\ECD_L\methods\PL040320.M
 Quant Title : GC Extractables
 QLast Update : Sat Apr 04 06:41:11 2020
 Response via : Initial Calibration
 Integrator: ChemStation

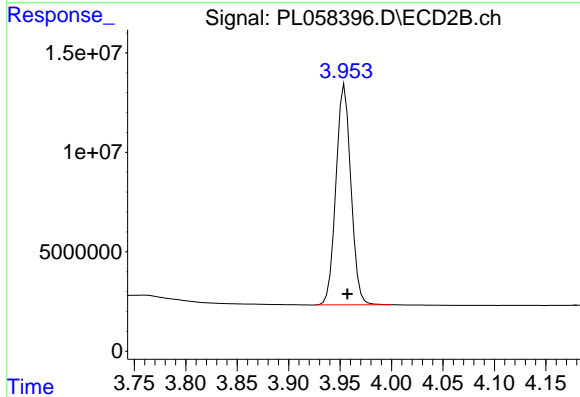
Volume Inj. : 1 µl
 Signal #1 Phase : ZB-MR2 Signal #2 Phase: ZB-MR1
 Signal #1 Info : 30M x 0.32mm x0.2 Signal #2 Info : 30M x 0.32mm x0.5µm



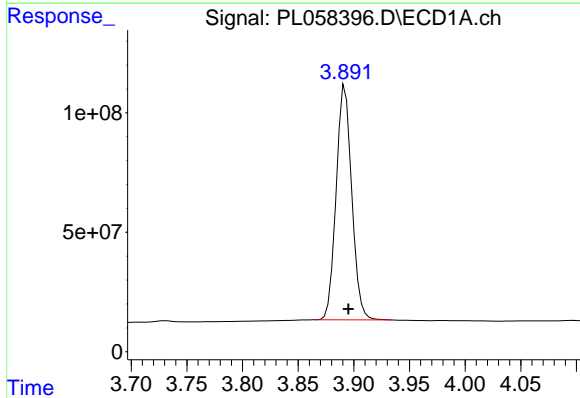


#1 Tetrachloro-m-xylene
 R.T.: 3.456 min
 Delta R.T.: -0.002 min
 Response: 553600109
 Conc: 54.92 ng/ml

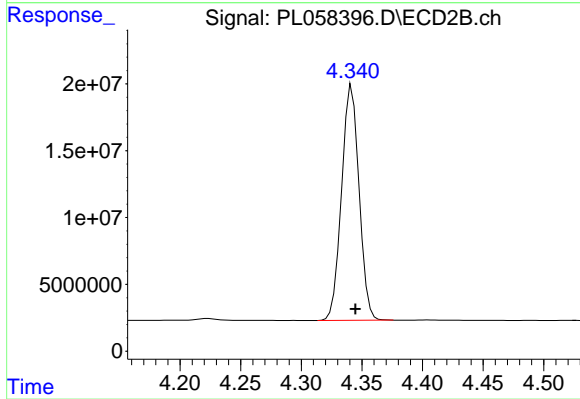
Instrument :
 ECD_L
 ClientSampleId :
 PSTDCCC050



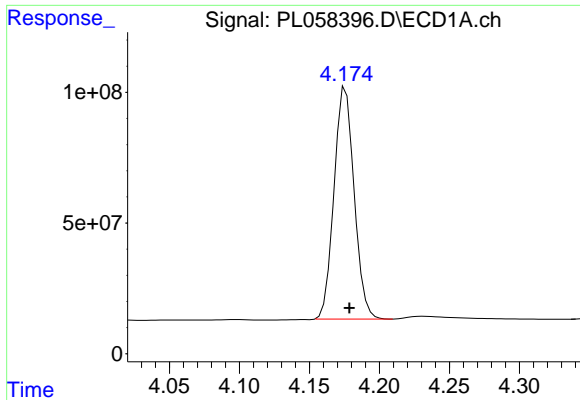
#1 Tetrachloro-m-xylene
 R.T.: 3.954 min
 Delta R.T.: -0.003 min
 Response: 112033457
 Conc: 51.62 ng/ml



#2 alpha-BHC
 R.T.: 3.892 min
 Delta R.T.: -0.003 min
 Response: 958577076
 Conc: 55.18 ng/ml



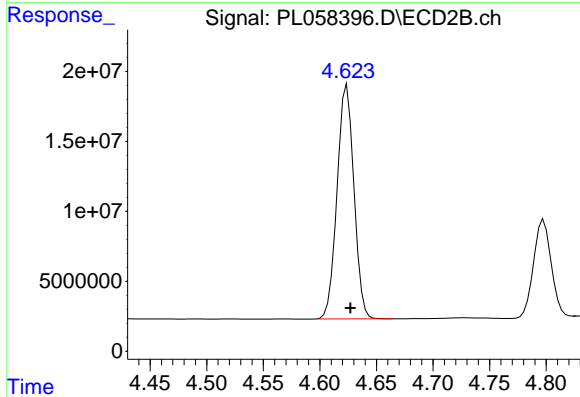
#2 alpha-BHC
 R.T.: 4.342 min
 Delta R.T.: -0.003 min
 Response: 176345245
 Conc: 53.70 ng/ml



#3 gamma-BHC (Lindane)

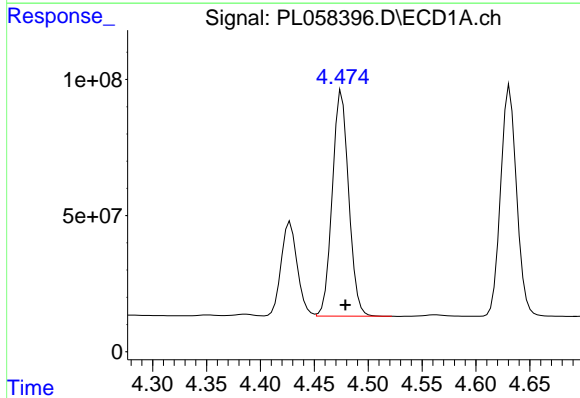
R.T.: 4.176 min
 Delta R.T.: -0.003 min
 Response: 886489846
 Conc: 60.99 ng/ml

Instrument :
 ECD_L
 ClientSampleId :
 PSTDCCC050



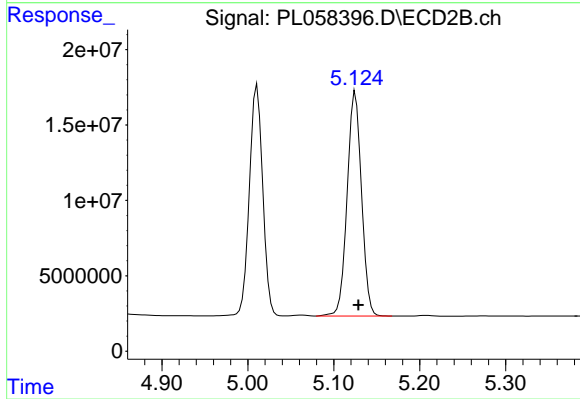
#3 gamma-BHC (Lindane)

R.T.: 4.624 min
 Delta R.T.: -0.003 min
 Response: 173422626
 Conc: 53.38 ng/ml



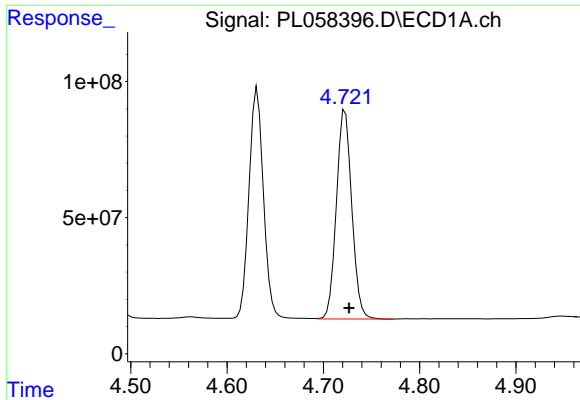
#4 Heptachlor

R.T.: 4.475 min
 Delta R.T.: -0.003 min
 Response: 875782706
 Conc: 54.63 ng/ml



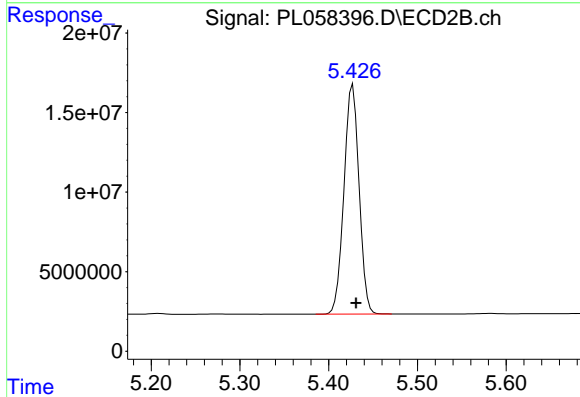
#4 Heptachlor

R.T.: 5.125 min
 Delta R.T.: -0.004 min
 Response: 173322327
 Conc: 51.64 ng/ml

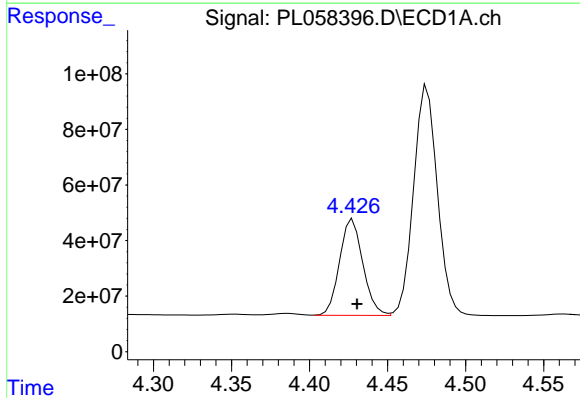


#5 Aldrin
 R.T.: 4.723 min
 Delta R.T.: -0.004 min
 Response: 852772202
 Conc: 57.91 ng/ml

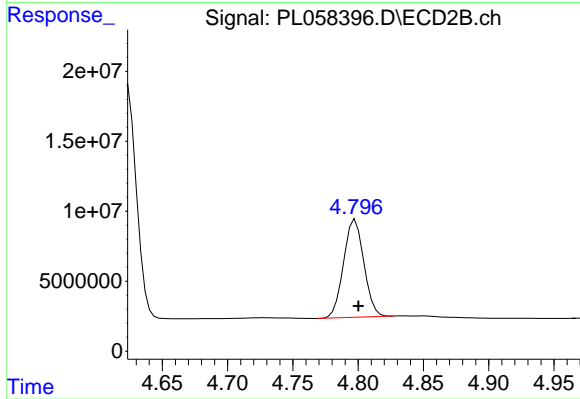
Instrument :
 ECD_L
 ClientSampled :
 PSTDCCC050



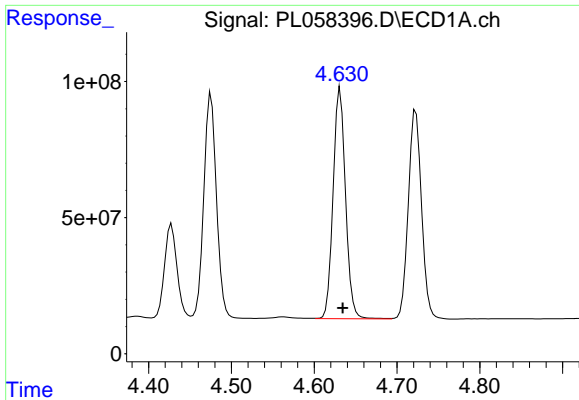
#5 Aldrin
 R.T.: 5.427 min
 Delta R.T.: -0.004 min
 Response: 170713663
 Conc: 52.72 ng/ml



#6 beta-BHC
 R.T.: 4.428 min
 Delta R.T.: -0.003 min
 Response: 360009855
 Conc: 57.01 ng/ml



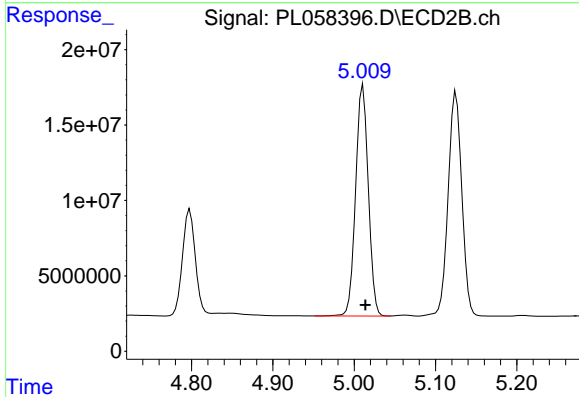
#6 beta-BHC
 R.T.: 4.798 min
 Delta R.T.: -0.002 min
 Response: 75543236
 Conc: 54.40 ng/ml



#7 delta-BHC

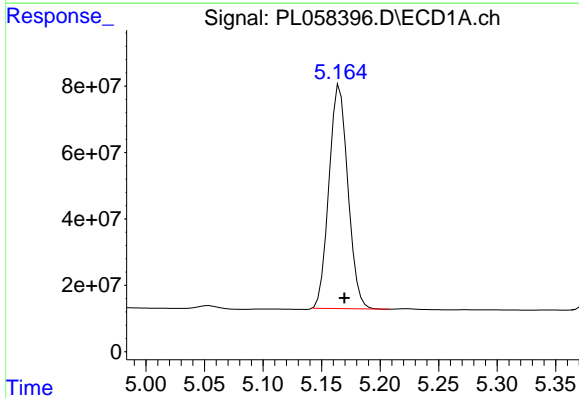
R.T.: 4.631 min
Delta R.T.: -0.003 min
Response: 882872222
Conc: 58.17 ng/ml

Instrument :
ECD_L
ClientSampleId :
PSTDCCC050



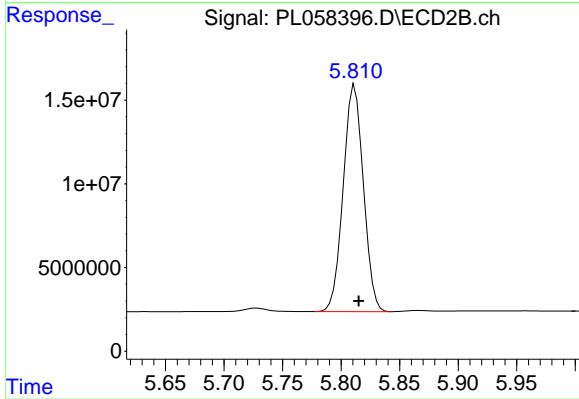
#7 delta-BHC

R.T.: 5.011 min
Delta R.T.: -0.003 min
Response: 165617859
Conc: 65.58 ng/ml



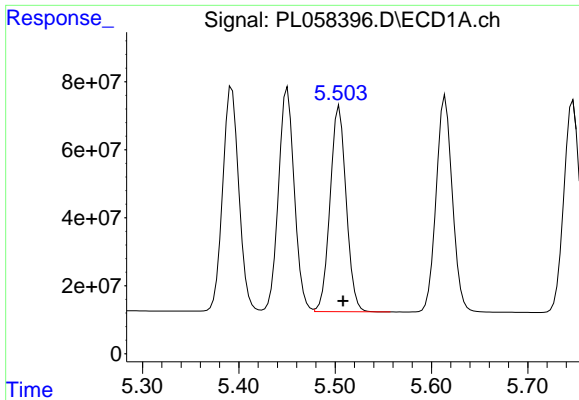
#8 Heptachlor epoxide

R.T.: 5.165 min
Delta R.T.: -0.004 min
Response: 757371516
Conc: 56.35 ng/ml



#8 Heptachlor epoxide

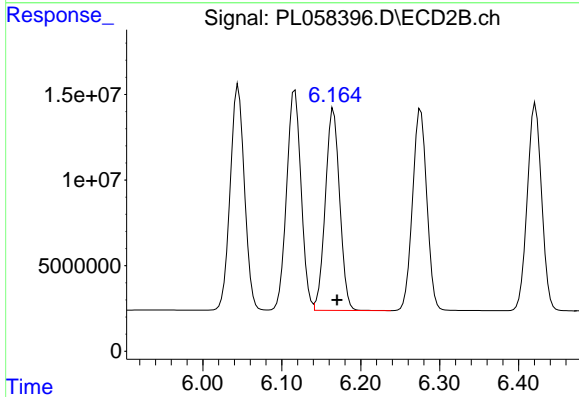
R.T.: 5.812 min
Delta R.T.: -0.004 min
Response: 162679555
Conc: 60.24 ng/ml



#9 Endosulfan I

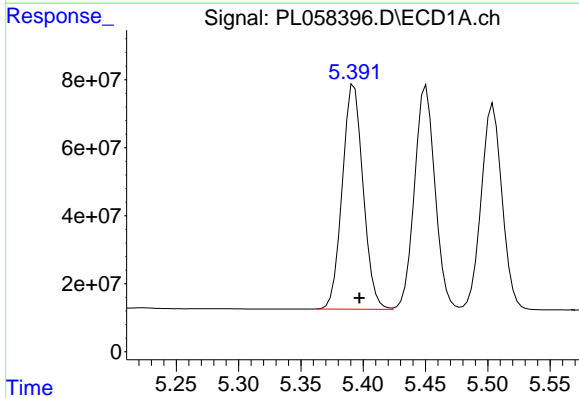
R.T.: 5.504 min
 Delta R.T.: -0.004 min
 Response: 703741299
 Conc: 57.42 ng/ml

Instrument :
 ECD_L
 ClientSampleId :
 PSTDCCC050



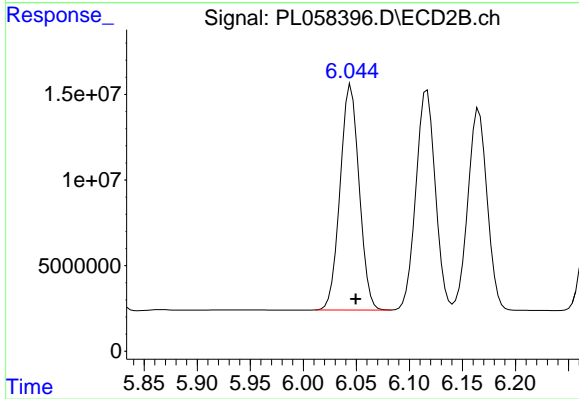
#9 Endosulfan I

R.T.: 6.165 min
 Delta R.T.: -0.005 min
 Response: 149269928
 Conc: 50.06 ng/ml



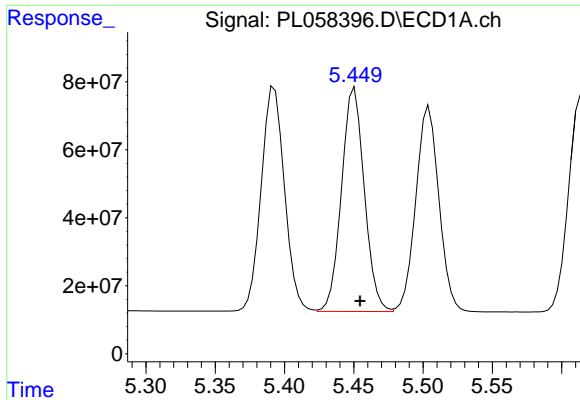
#10 gamma-Chlordane

R.T.: 5.393 min
 Delta R.T.: -0.004 min
 Response: 770935500
 Conc: 56.76 ng/ml



#10 gamma-Chlordane

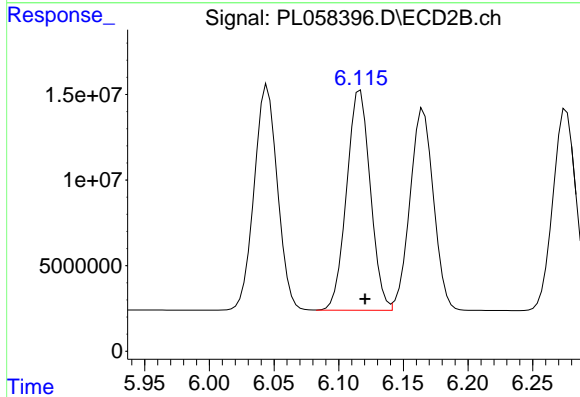
R.T.: 6.045 min
 Delta R.T.: -0.005 min
 Response: 164252594
 Conc: 50.70 ng/ml



#11 alpha-Chlordane

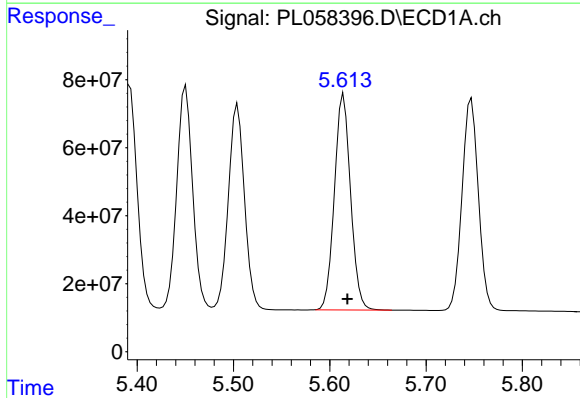
R.T.: 5.451 min
 Delta R.T.: -0.004 min
 Response: 754660723
 Conc: 56.67 ng/ml

Instrument :
 ECD_L
 ClientSampleId :
 PSTDCCC050



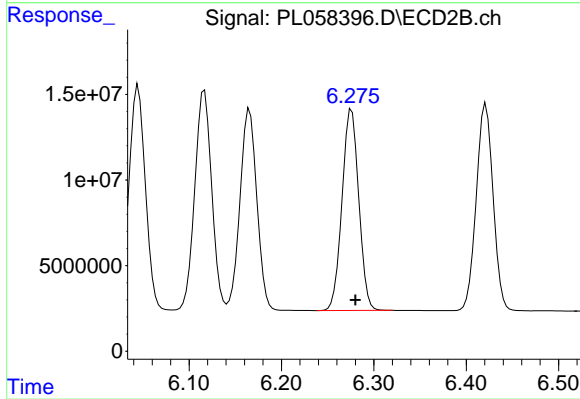
#11 alpha-Chlordane

R.T.: 6.117 min
 Delta R.T.: -0.004 min
 Response: 163733738
 Conc: 50.04 ng/ml



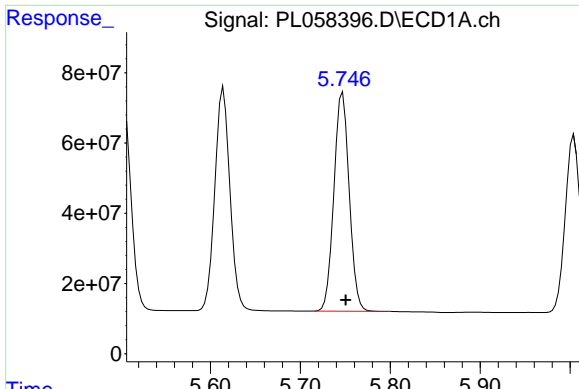
#12 4,4'-DDE

R.T.: 5.615 min
 Delta R.T.: -0.004 min
 Response: 740932862
 Conc: 56.56 ng/ml



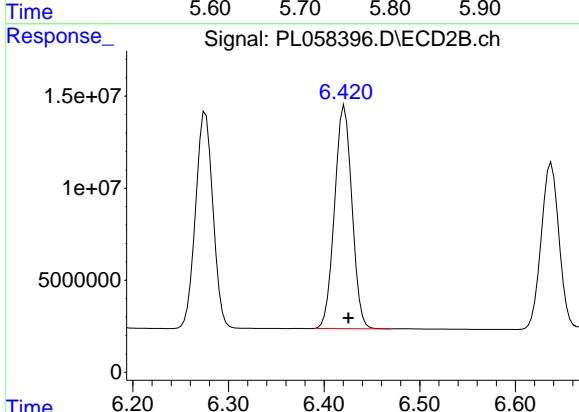
#12 4,4'-DDE

R.T.: 6.276 min
 Delta R.T.: -0.004 min
 Response: 148106166
 Conc: 50.02 ng/ml

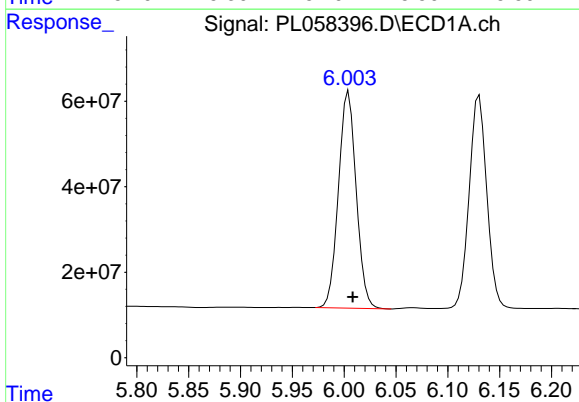


#13 Dieldrin
 R.T.: 5.747 min
 Delta R.T.: -0.004 min
 Response: 737185337
 Conc: 56.67 ng/ml

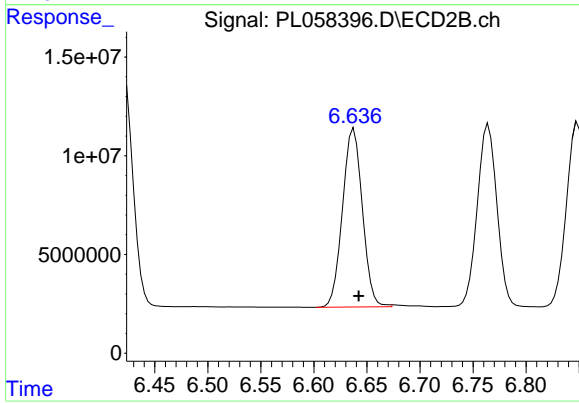
Instrument :
 ECD_L
 ClientSampleId :
 PSTDCCC050



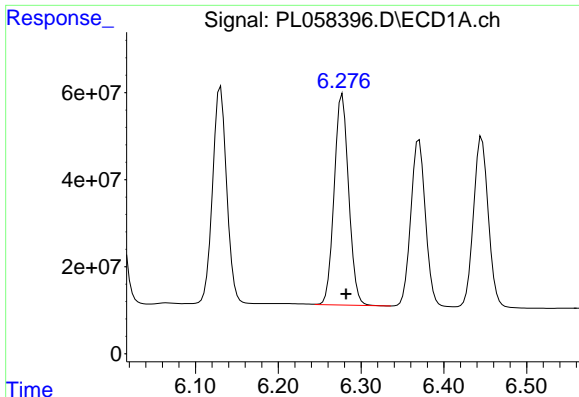
#13 Dieldrin
 R.T.: 6.421 min
 Delta R.T.: -0.004 min
 Response: 153014422
 Conc: 50.08 ng/ml



#14 Endrin
 R.T.: 6.004 min
 Delta R.T.: -0.004 min
 Response: 603965678
 Conc: 51.74 ng/ml



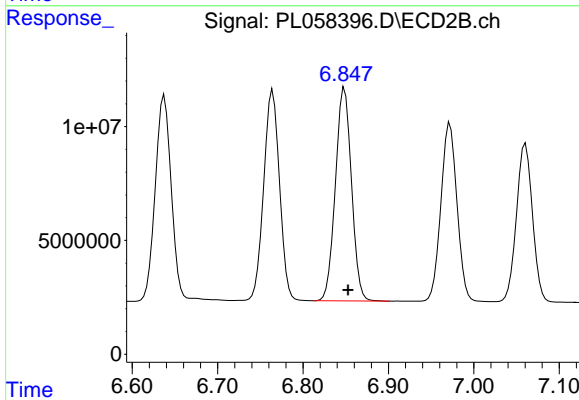
#14 Endrin
 R.T.: 6.638 min
 Delta R.T.: -0.005 min
 Response: 117479272
 Conc: 47.02 ng/ml



#15 Endosulfan II

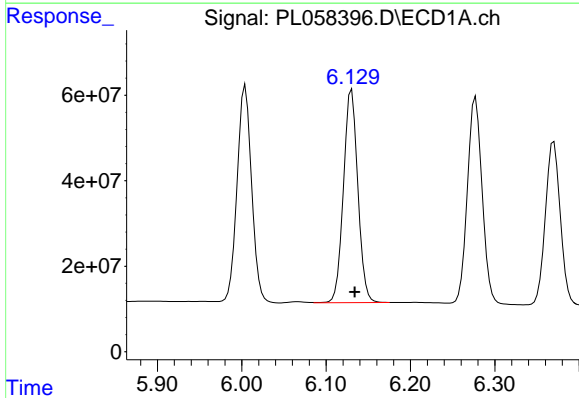
R.T.: 6.277 min
 Delta R.T.: -0.004 min
 Response: 589014517
 Conc: 53.25 ng/ml

Instrument :
 ECD_L
 ClientSampleId :
 PSTDCCC050



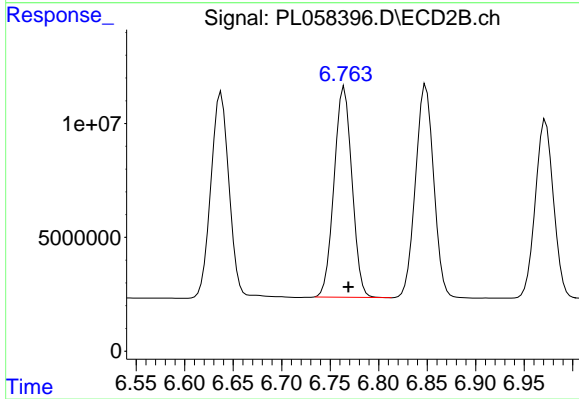
#15 Endosulfan II

R.T.: 6.849 min
 Delta R.T.: -0.004 min
 Response: 122528364
 Conc: 47.24 ng/ml



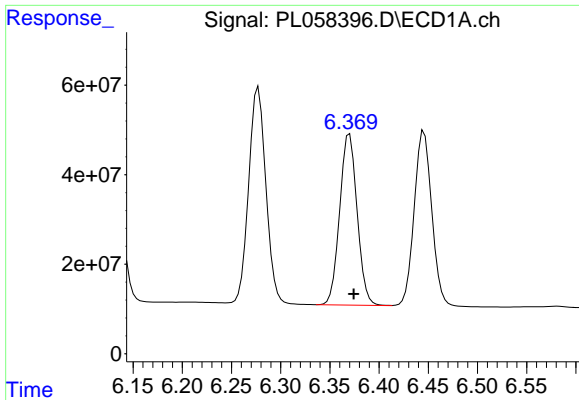
#16 4,4'-DDD

R.T.: 6.130 min
 Delta R.T.: -0.004 min
 Response: 590558000
 Conc: 59.09 ng/ml



#16 4,4'-DDD

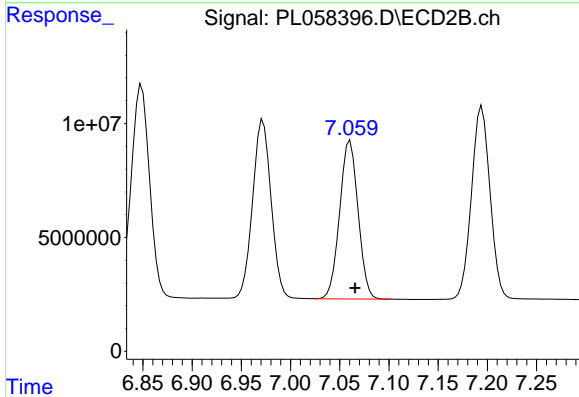
R.T.: 6.765 min
 Delta R.T.: -0.004 min
 Response: 118498825
 Conc: 51.92 ng/ml



#17 4,4'-DDT

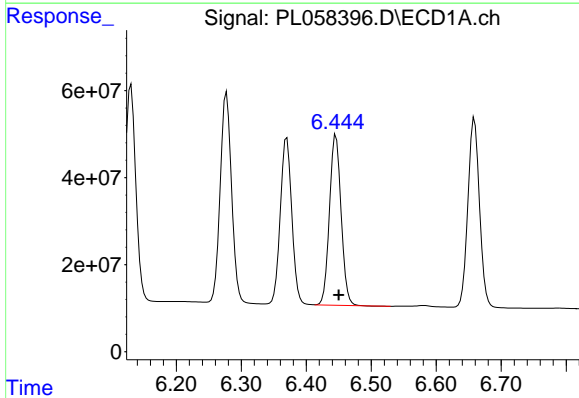
R.T.: 6.370 min
Delta R.T.: -0.004 min
Response: 471595138
Conc: 46.47 ng/ml

Instrument :
ECD_L
ClientSampleId :
PSTDCCC050



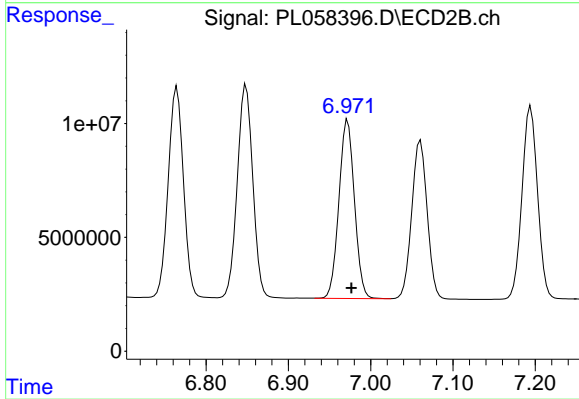
#17 4,4'-DDT

R.T.: 7.061 min
Delta R.T.: -0.005 min
Response: 90638976
Conc: 40.69 ng/ml



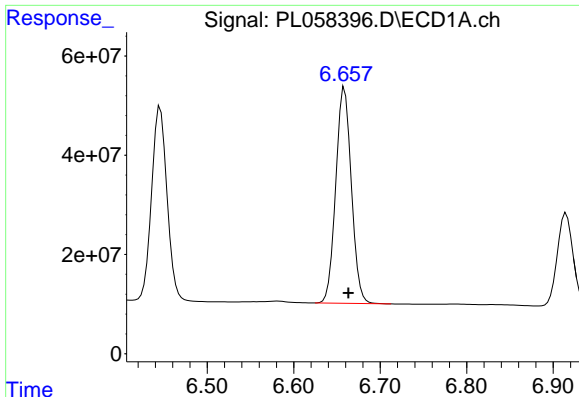
#18 Endrin aldehyde

R.T.: 6.446 min
Delta R.T.: -0.004 min
Response: 486285968
Conc: 52.01 ng/ml



#18 Endrin aldehyde

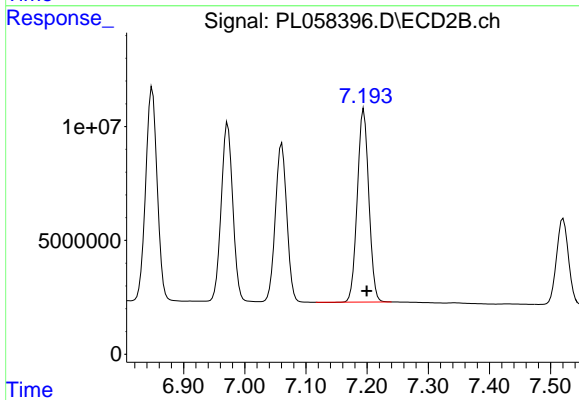
R.T.: 6.972 min
Delta R.T.: -0.004 min
Response: 102914010
Conc: 46.32 ng/ml



#19 Endosulfan Sulfate

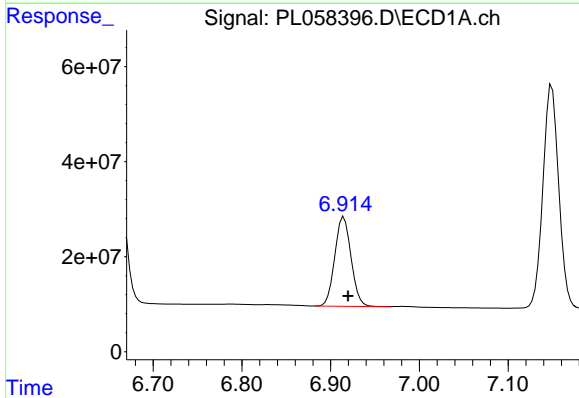
R.T.: 6.659 min
 Delta R.T.: -0.004 min
 Response: 541035479
 Conc: 53.25 ng/ml

Instrument :
 ECD_L
 ClientSampleId :
 PSTDCCC050



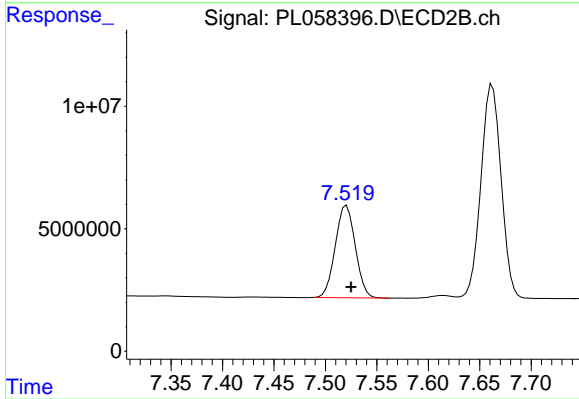
#19 Endosulfan Sulfate

R.T.: 7.194 min
 Delta R.T.: -0.005 min
 Response: 111055450
 Conc: 46.80 ng/ml



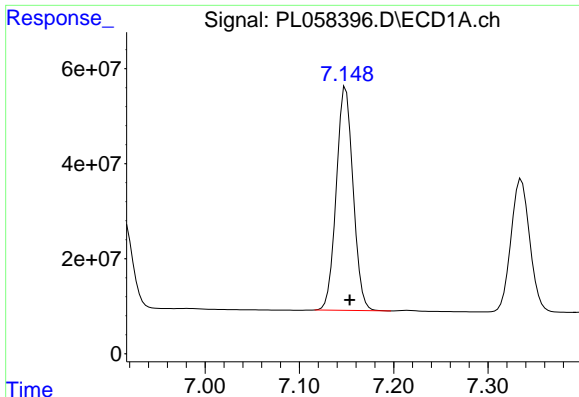
#20 Methoxychlor

R.T.: 6.915 min
 Delta R.T.: -0.005 min
 Response: 240809630
 Conc: 43.68 ng/ml



#20 Methoxychlor

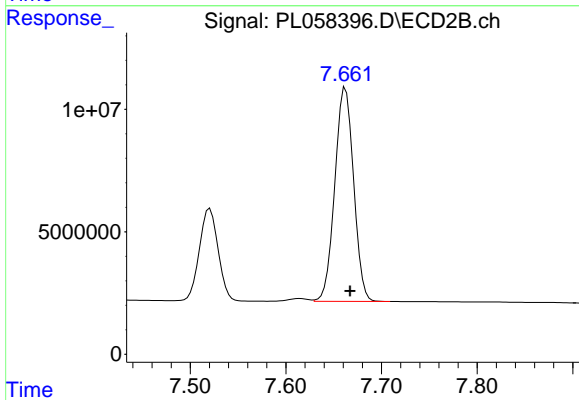
R.T.: 7.521 min
 Delta R.T.: -0.004 min
 Response: 50985658
 Conc: 40.08 ng/ml



#21 Endrin ketone

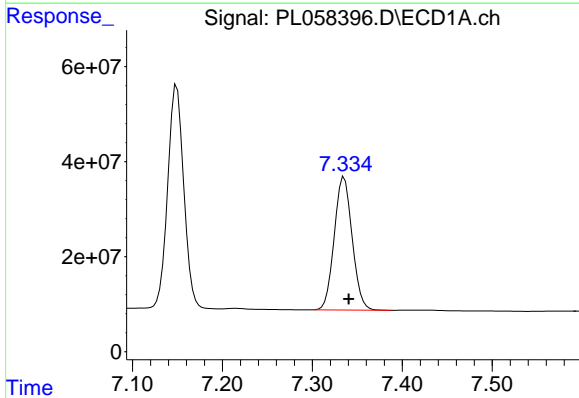
R.T.: 7.149 min
Delta R.T.: -0.004 min
Response: 582309249
Conc: 52.31 ng/ml

Instrument :
ECD_L
ClientSampleId :
PSTDCCC050



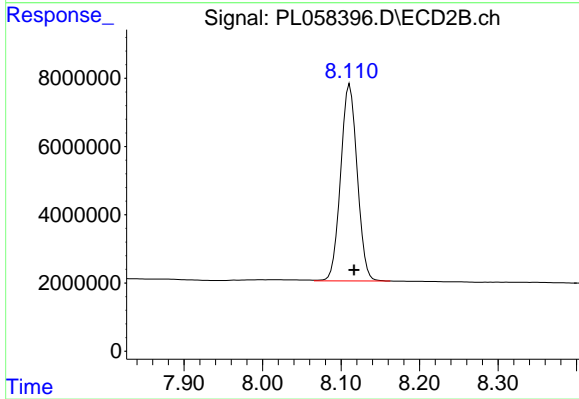
#21 Endrin ketone

R.T.: 7.662 min
Delta R.T.: -0.005 min
Response: 119394387
Conc: 48.30 ng/ml



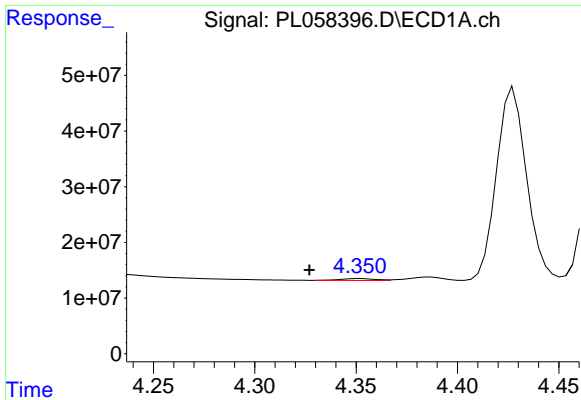
#22 Mirex

R.T.: 7.335 min
Delta R.T.: -0.005 min
Response: 387037415
Conc: 47.22 ng/ml



#22 Mirex

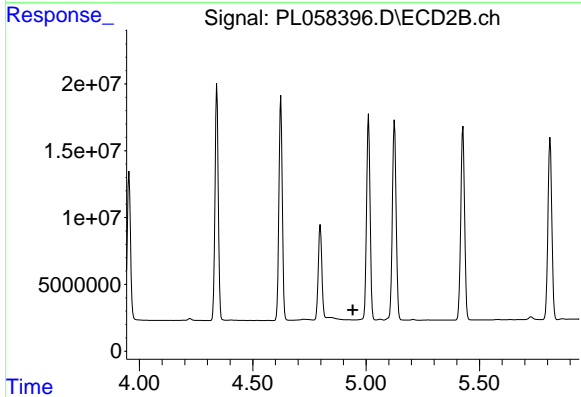
R.T.: 8.111 min
Delta R.T.: -0.006 min
Response: 84612195
Conc: 46.02 ng/ml



#23 Chlordane-1

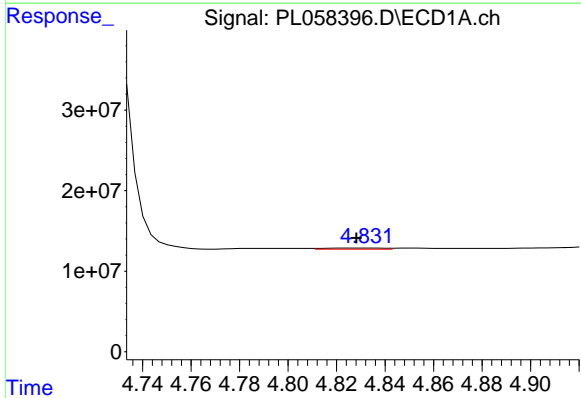
R.T.: 4.352 min
 Delta R.T.: 0.025 min
 Response: 3782599
 Conc: 10.23 ng/ml

Instrument :
 ECD_L
 ClientSampleId :
 PSTDCCC050



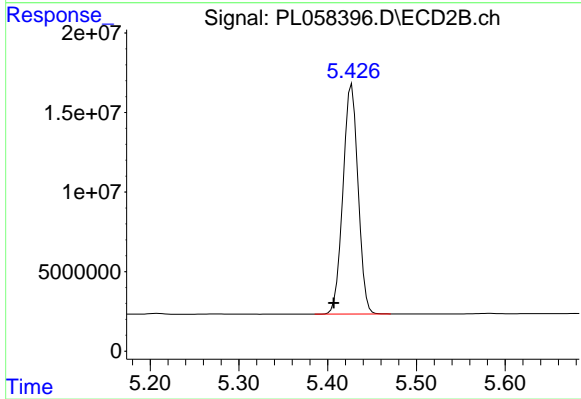
#23 Chlordane-1

R.T.: 0.000 min
 Exp R.T. : 4.942 min
 Response: 0
 Conc: N.D.



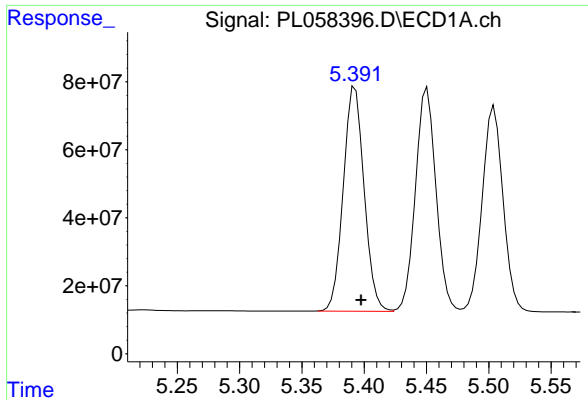
#24 Chlordane-2

R.T.: 4.832 min
 Delta R.T.: 0.004 min
 Response: 2271667
 Conc: 5.63 ng/ml



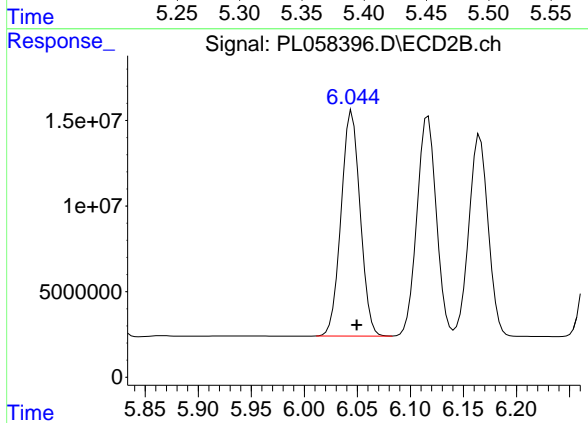
#24 Chlordane-2

R.T.: 5.427 min
 Delta R.T.: 0.020 min
 Response: 170713663
 Conc: 1635.84 ng/ml

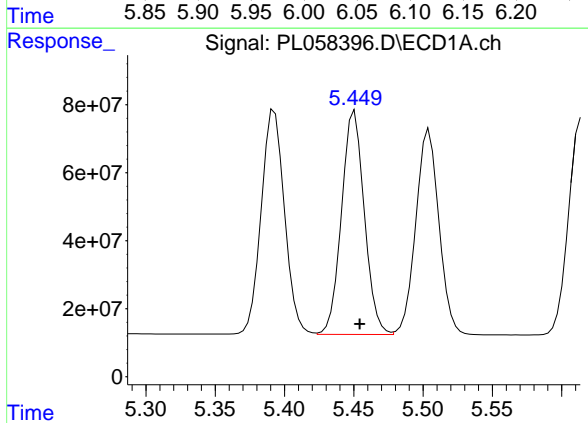


#25 Chlordane-3
R.T.: 5.393 min
Delta R.T.: -0.005 min
Response: 770935500
Conc: 630.56 ng/ml

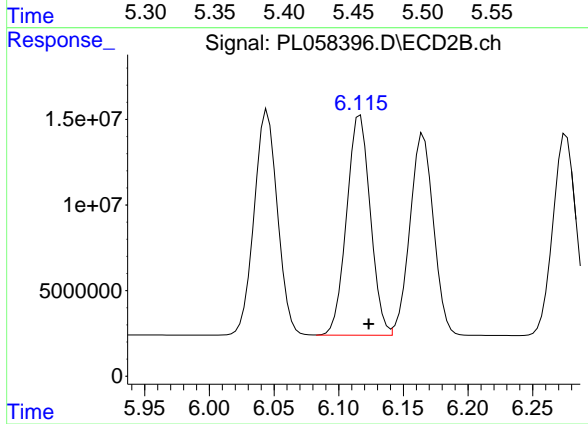
Instrument :
ECD_L
ClientSampleId :
PSTDCCC050



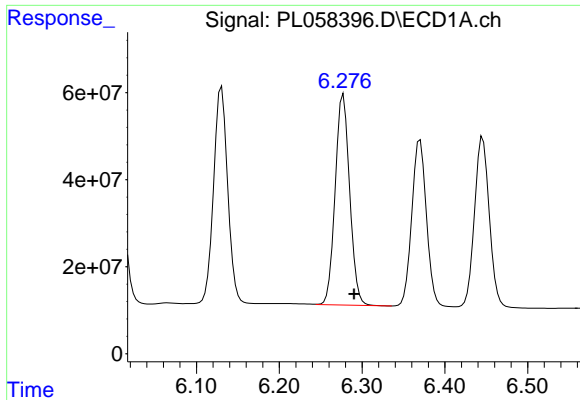
#25 Chlordane-3
R.T.: 6.045 min
Delta R.T.: -0.005 min
Response: 164252594
Conc: 379.62 ng/ml



#26 Chlordane-4
R.T.: 5.451 min
Delta R.T.: -0.004 min
Response: 754660723
Conc: 725.49 ng/ml



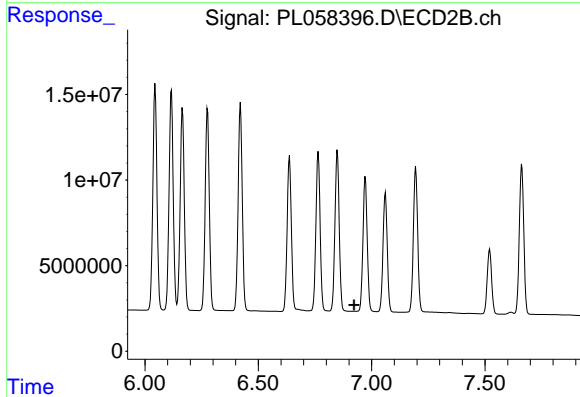
#26 Chlordane-4
R.T.: 6.117 min
Delta R.T.: -0.007 min
Response: 163733738
Conc: 311.91 ng/ml



#27 Chlordane-5

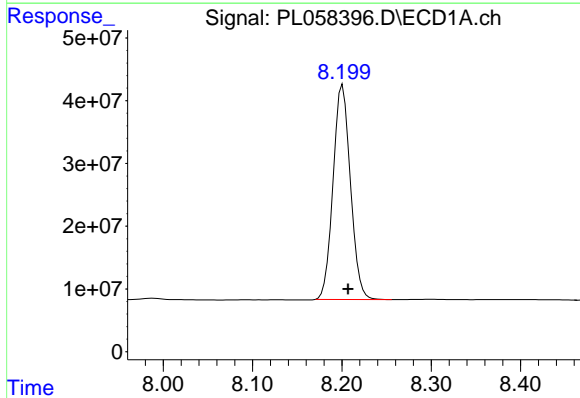
R.T.: 6.277 min
 Delta R.T.: -0.013 min
 Response: 589014517
 Conc: 1557.11 ng/ml

Instrument :
 ECD_L
 ClientSampleId :
 PSTDCCC050



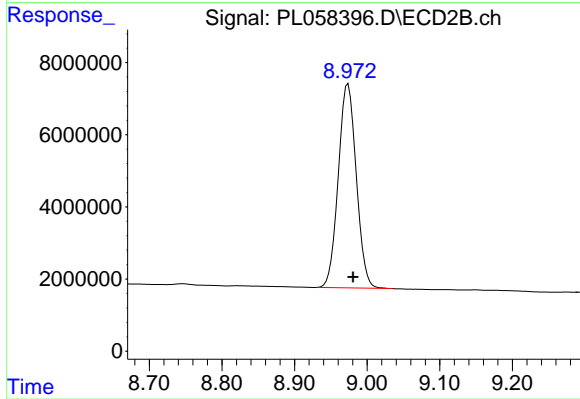
#27 Chlordane-5

R.T.: 0.000 min
 Exp R.T. : 6.922 min
 Response: 0
 Conc: N.D.



#28 Decachlorobiphenyl

R.T.: 8.201 min
 Delta R.T.: -0.006 min
 Response: 461736807
 Conc: 44.79 ng/ml



#28 Decachlorobiphenyl

R.T.: 8.974 min
 Delta R.T.: -0.007 min
 Response: 97367886
 Conc: 43.59 ng/ml