

Data Path : Z:\pestpcbsrv\HPCHEM1\ECD\_L\Data\PL042720\  
 Data File : PL058401.D  
 Signal(s) : Signal #1: ECD1A.ch Signal #2: ECD2B.ch  
 Acq On : 27 Apr 2020 18:02  
 Operator : AJ\MA  
 Sample : L2409-03  
 Misc :  
 ALS Vial : 17 Sample Multiplier: 1

Instrument :  
 ECD\_L  
 ClientSampleId :

Integration File signal 1: autoint1.e  
 Integration File signal 2: autoint2.e  
 Quant Time: Apr 28 01:15:11 2020  
 Quant Method : Z:\pestpcbsrv\HPCHEM1\ECD\_L\methods\PL040320.M  
 Quant Title : GC Extractables  
 QLast Update : Sat Apr 04 06:41:11 2020  
 Response via : Initial Calibration  
 Integrator: ChemStation

Volume Inj. : 1 µl  
 Signal #1 Phase : ZB-MR2 Signal #2 Phase: ZB-MR1  
 Signal #1 Info : 30M x 0.32mm x0.2 Signal #2 Info : 30M x 0.32mm x0.5µm

Compound	RT#1	RT#2	Resp#1	Resp#2	ng/ml	ng/ml
-----						
System Monitoring Compounds						
1) SA Tetrachlo...	3.454	3.954	225.2E6	46471384	22.341	21.414
28) SA Decachlor...	8.199	8.973	165.6E6	37073170	16.068	16.597
Target Compounds						
2) A alpha-BHC	3.892	4.366f	11892690	2877552	0.685	0.876 #
4) MA Heptachlor	4.461f	5.133	888743	13519244	0.055	4.028 #
5) MB Aldrin	4.723	5.409f	716029	510049	0.049	0.158 #
6) B beta-BHC	0.000	4.777f	0	1847273	N.D.	1.330 #
8) B Heptachlo...	5.163	5.800f	21054157	3470191	1.567	1.285
9) A Endosulfan I	5.528f	6.170	5609175	135442	0.458	0.045 #
10) B gamma-Chl...	5.385	6.054	3054067	4775810	0.225	1.474 #
11) B alpha-Chl...	5.449	6.117	8192035	1164932	0.615	0.356 #
12) B 4,4'-DDE	5.613	6.275	226.4E6	44218052	17.283	14.935
13) MA Dieldrin	5.746	6.419	18212478	966462	1.400	0.316 #
14) MA Endrin	6.004	6.666f	19612170	498012	1.680	0.199 #
15) B Endosulfa...	6.283	6.866	1967238	1058007	0.178	0.408 #
16) A 4,4'-DDD	6.130	6.764	10924200	2782151	1.093	1.219
17) MA 4,4'-DDT	6.368	7.059	93791958	16784487	9.241	7.536
18) B Endrin al...	6.420f	6.954f	12454293	2968488	1.332	1.336
19) B Endosulfa...	6.676	7.191	69934824	-1225274	6.884	N.D. #
20) A Methoxychlor	6.897f	7.509f	5638185	558981	1.023	0.439 #
21) B Endrin ke...	0.000	7.662	0	3071518	N.D.	1.243 #
22) Mirex	7.322f	8.094f	2604813	596696	0.318	0.325
23) Chlordane-1	4.327	4.930	-1212320	9348307	N.D.	106.009
24) Chlordane-2	4.841	5.409	4114722	510049	10.192	4.887 #
25) Chlordane-3	5.385	6.054	3054067	4775810	2.498	11.038 #
26) Chlordane-4	5.449	6.117	8192035	1164932	7.875	2.219 #
27) Chlordane-5	6.283	6.943f	1967238	2259658	5.201	26.503 #

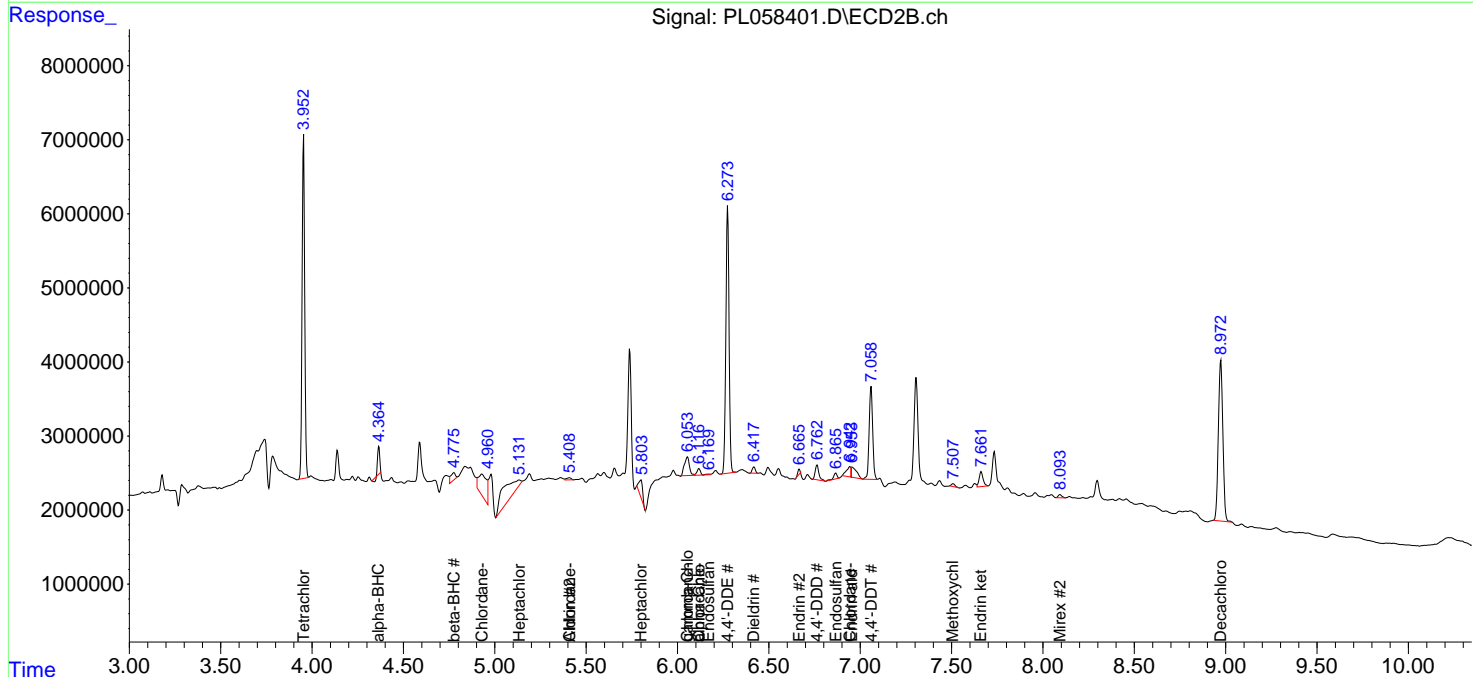
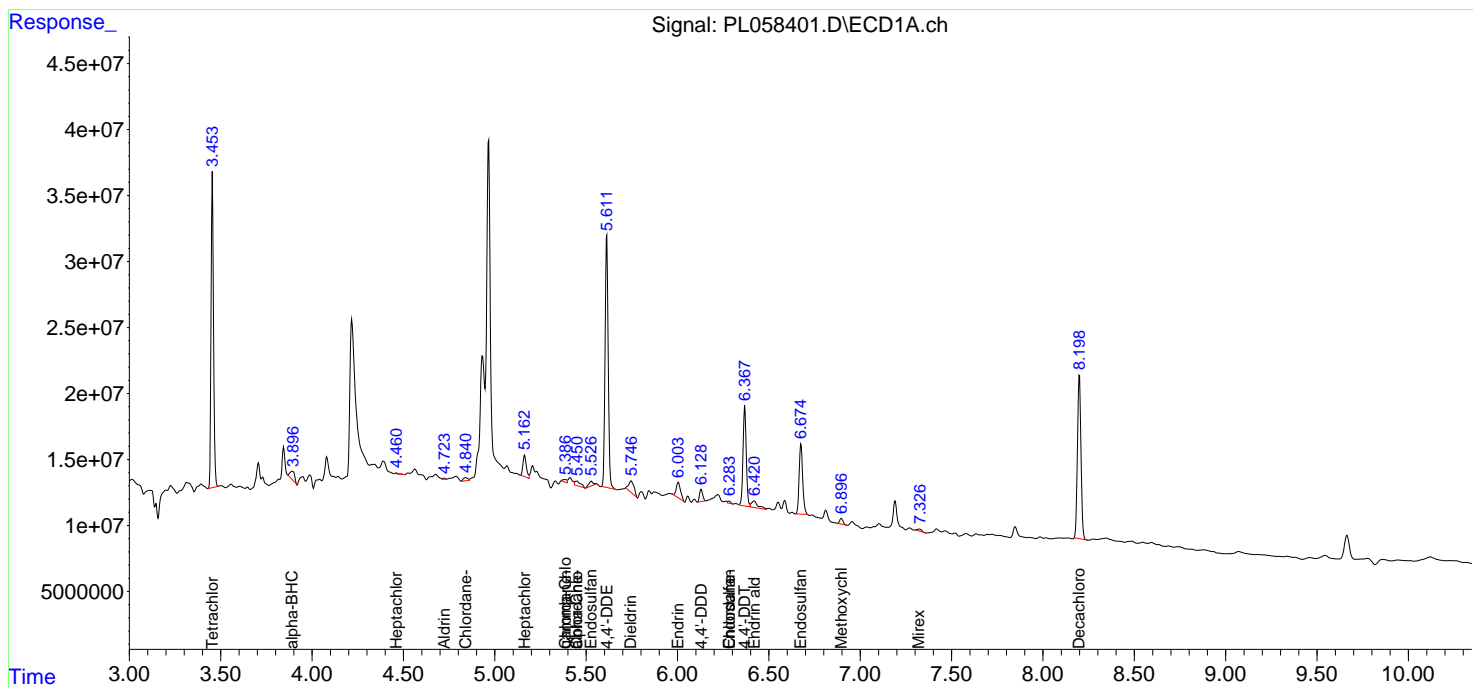
(f)=RT Delta > 1/2 Window (#)=Amounts differ by > 25% (m)=manual int.

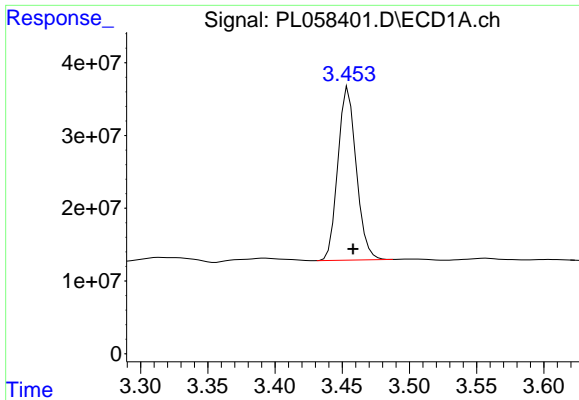
Data Path : Z:\pestpcbsrv\HPCHEM1\ECD\_L\Data\PL042720\  
 Data File : PL058401.D  
 Signal(s) : Signal #1: ECD1A.ch Signal #2: ECD2B.ch  
 Acq On : 27 Apr 2020 18:02  
 Operator : AJ\MA  
 Sample : L2409-03  
 Misc :  
 ALS Vial : 17 Sample Multiplier: 1

Instrument :  
 ECD\_L  
 ClientSampled :

Integration File signal 1: autoint1.e  
 Integration File signal 2: autoint2.e  
 Quant Time: Apr 28 01:15:11 2020  
 Quant Method : Z:\pestpcbsrv\HPCHEM1\ECD\_L\methods\PL040320.M  
 Quant Title : GC Extractables  
 QLast Update : Sat Apr 04 06:41:11 2020  
 Response via : Initial Calibration  
 Integrator: ChemStation

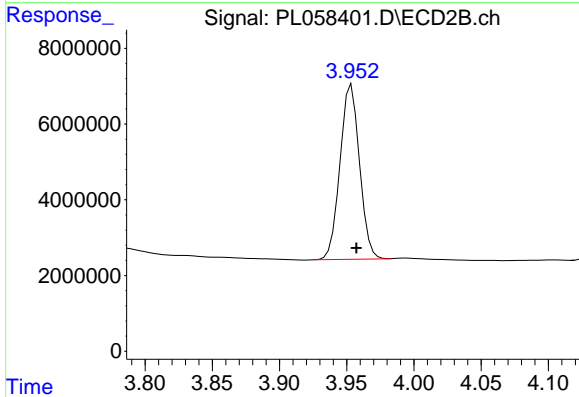
Volume Inj. : 1 µl  
 Signal #1 Phase : ZB-MR2 Signal #2 Phase: ZB-MR1  
 Signal #1 Info : 30M x 0.32mm x0.2 Signal #2 Info : 30M x 0.32mm x0.5µm



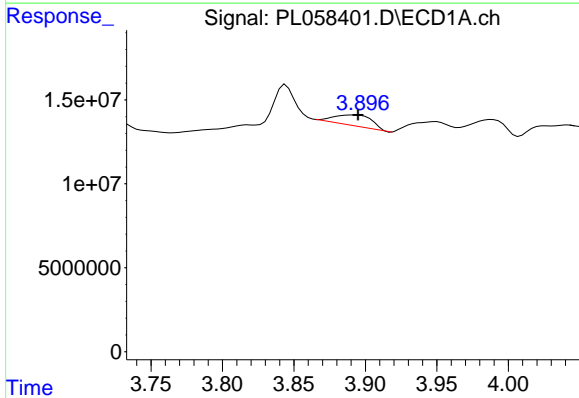


#1 Tetrachloro-m-xylene  
 R.T.: 3.454 min  
 Delta R.T.: -0.004 min  
 Response: 225221103  
 Conc: 22.34 ng/ml

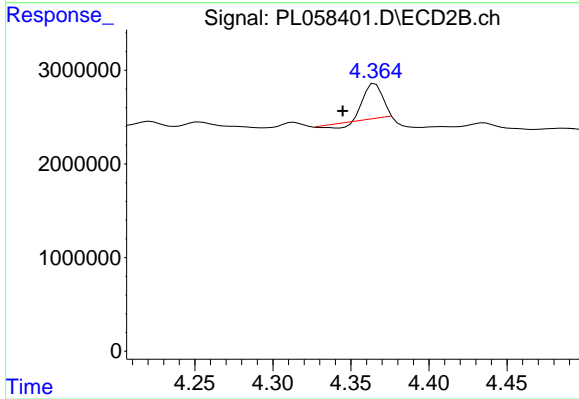
Instrument :  
 ECD\_L  
 ClientSampled :



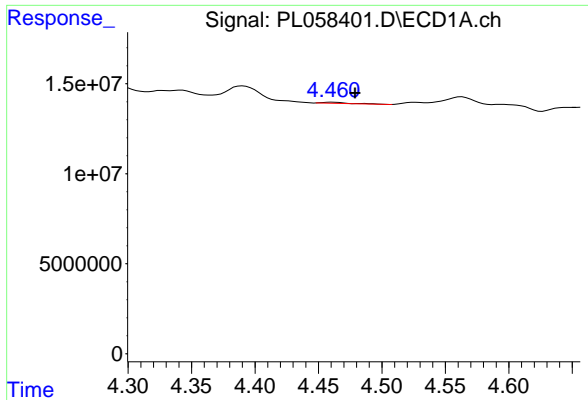
#1 Tetrachloro-m-xylene  
 R.T.: 3.954 min  
 Delta R.T.: -0.004 min  
 Response: 46471384  
 Conc: 21.41 ng/ml



#2 alpha-BHC  
 R.T.: 3.892 min  
 Delta R.T.: -0.003 min  
 Response: 11892690  
 Conc: 0.68 ng/ml

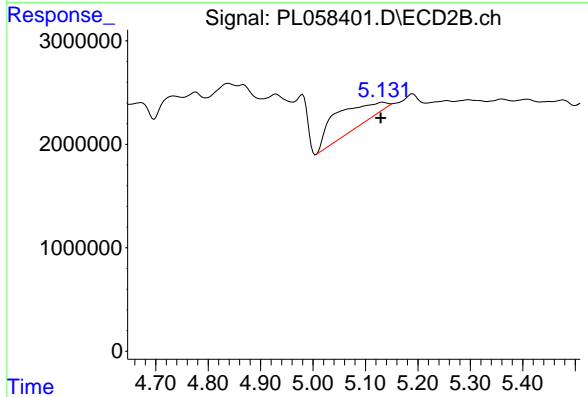


#2 alpha-BHC  
 R.T.: 4.366 min  
 Delta R.T.: 0.021 min  
 Response: 2877552  
 Conc: 0.88 ng/ml

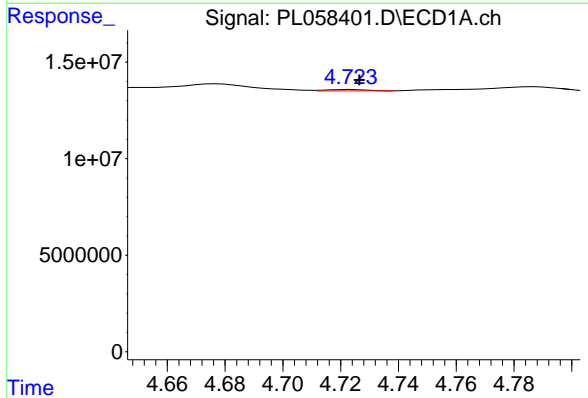


#4 Heptachlor  
 R.T.: 4.461 min  
 Delta R.T.: -0.018 min  
 Response: 888743  
 Conc: 0.06 ng/ml

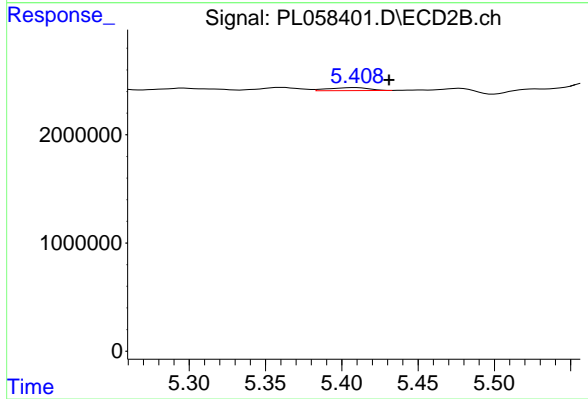
Instrument :  
 ECD\_L  
 ClientSampled :



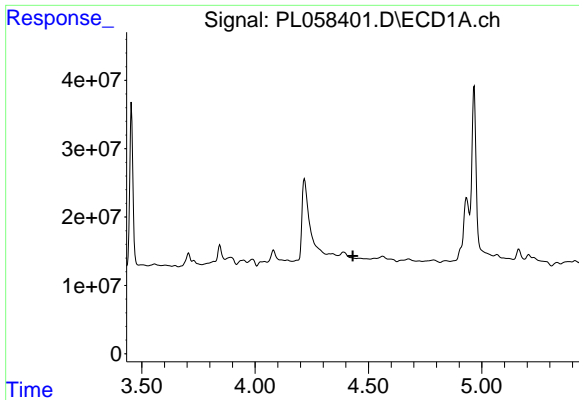
#4 Heptachlor  
 R.T.: 5.133 min  
 Delta R.T.: 0.004 min  
 Response: 13519244  
 Conc: 4.03 ng/ml



#5 Aldrin  
 R.T.: 4.723 min  
 Delta R.T.: -0.003 min  
 Response: 716029  
 Conc: 0.05 ng/ml



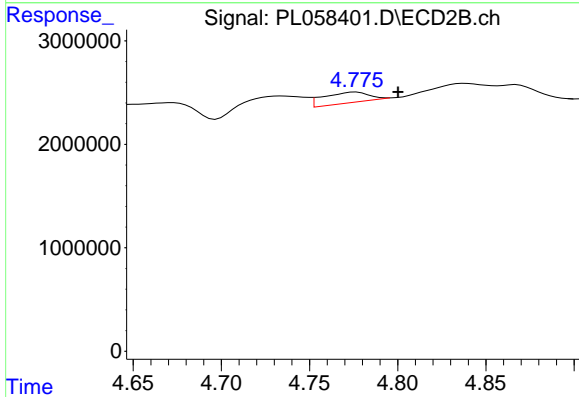
#5 Aldrin  
 R.T.: 5.409 min  
 Delta R.T.: -0.022 min  
 Response: 510049  
 Conc: 0.16 ng/ml



#6 beta-BHC

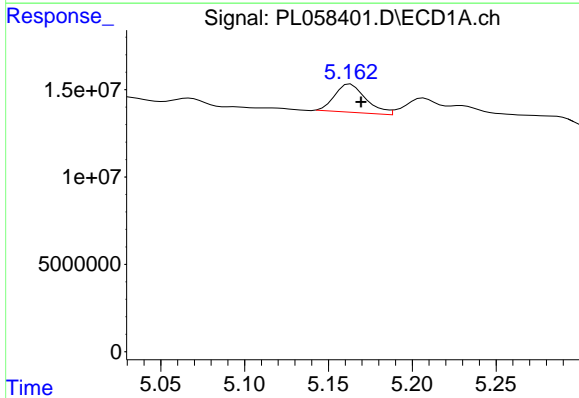
R.T.: 0.000 min  
 Exp R.T.: 4.430 min  
 Response: 0  
 Conc: N.D.

Instrument :  
 ECD\_L  
 ClientSampled :



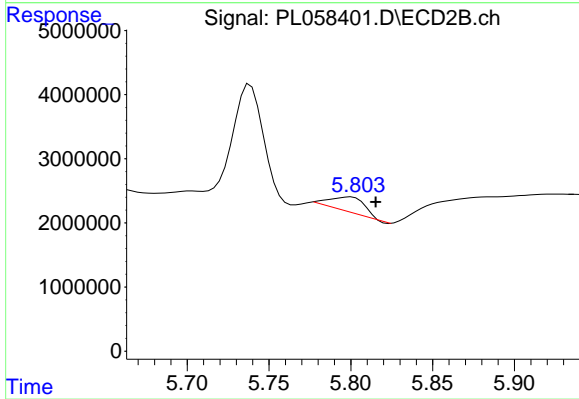
#6 beta-BHC

R.T.: 4.777 min  
 Delta R.T.: -0.024 min  
 Response: 1847273  
 Conc: 1.33 ng/ml



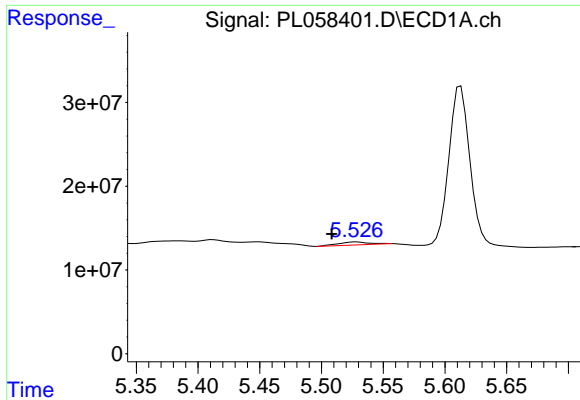
#8 Heptachlor epoxide

R.T.: 5.163 min  
 Delta R.T.: -0.006 min  
 Response: 21054157  
 Conc: 1.57 ng/ml



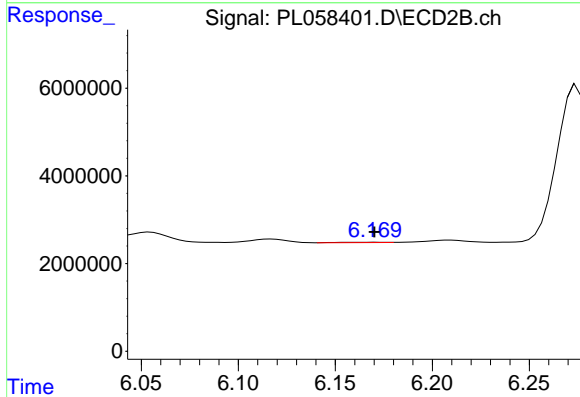
#8 Heptachlor epoxide

R.T.: 5.800 min  
 Delta R.T.: -0.015 min  
 Response: 3470191  
 Conc: 1.29 ng/ml

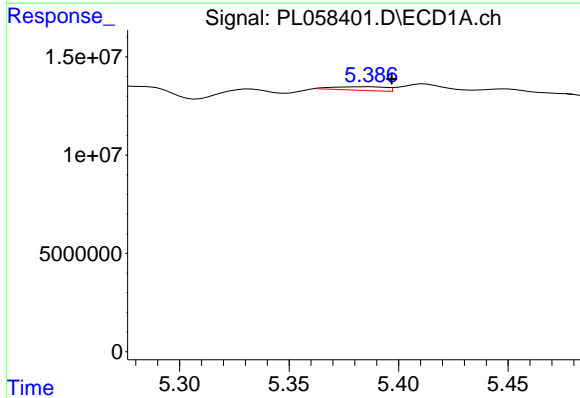


#9 Endosulfan I  
 R.T.: 5.528 min  
 Delta R.T.: 0.020 min  
 Response: 5609175  
 Conc: 0.46 ng/ml

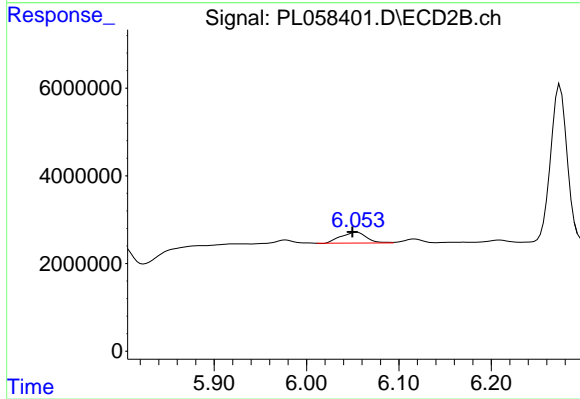
Instrument :  
 ECD\_L  
 ClientSampled :



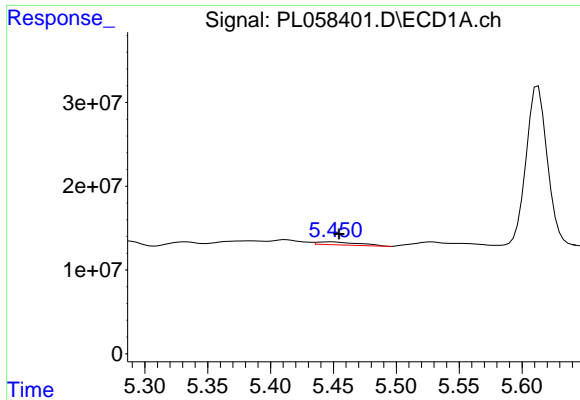
#9 Endosulfan I  
 R.T.: 6.170 min  
 Delta R.T.: 0.000 min  
 Response: 135442  
 Conc: 0.05 ng/ml



#10 gamma-Chlordane  
 R.T.: 5.385 min  
 Delta R.T.: -0.012 min  
 Response: 3054067  
 Conc: 0.22 ng/ml

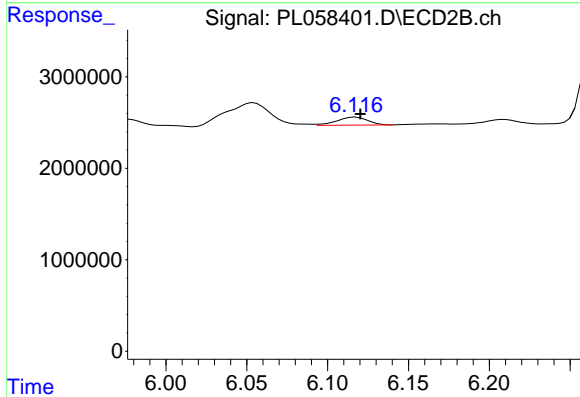


#10 gamma-Chlordane  
 R.T.: 6.054 min  
 Delta R.T.: 0.005 min  
 Response: 4775810  
 Conc: 1.47 ng/ml

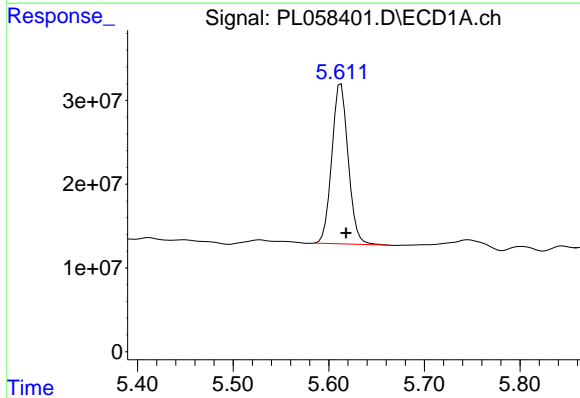


#11 alpha-Chlordane  
 R.T.: 5.449 min  
 Delta R.T.: -0.006 min  
 Response: 8192035  
 Conc: 0.62 ng/ml

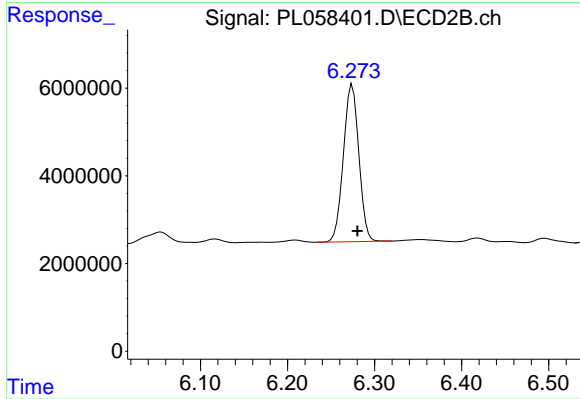
Instrument :  
 ECD\_L  
 ClientSampled :



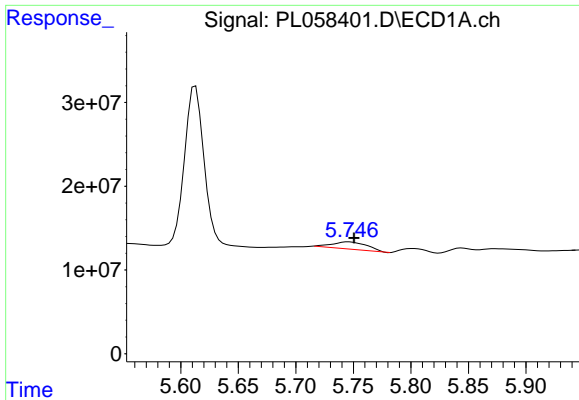
#11 alpha-Chlordane  
 R.T.: 6.117 min  
 Delta R.T.: -0.003 min  
 Response: 1164932  
 Conc: 0.36 ng/ml



#12 4,4'-DDE  
 R.T.: 5.613 min  
 Delta R.T.: -0.005 min  
 Response: 226404977  
 Conc: 17.28 ng/ml

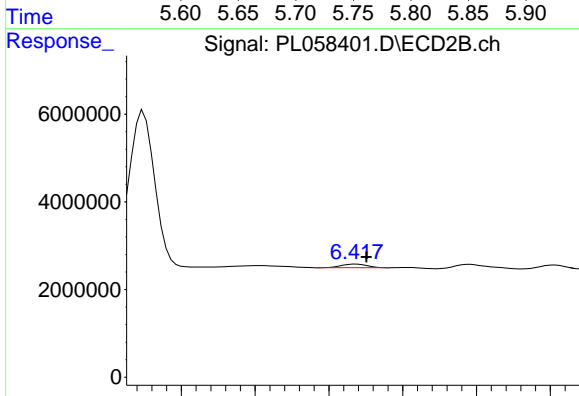


#12 4,4'-DDE  
 R.T.: 6.275 min  
 Delta R.T.: -0.006 min  
 Response: 44218052  
 Conc: 14.94 ng/ml

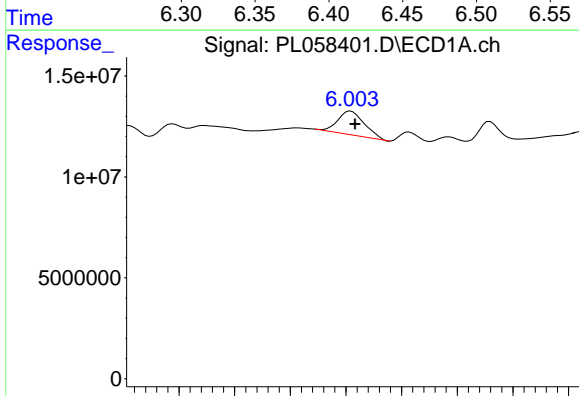


#13 Dieldrin  
 R.T.: 5.746 min  
 Delta R.T.: -0.004 min  
 Response: 18212478  
 Conc: 1.40 ng/ml

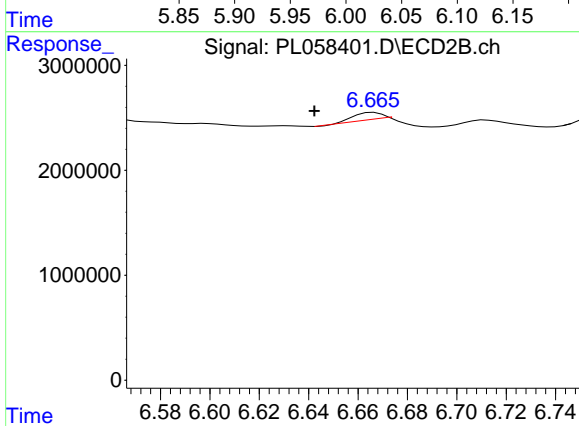
Instrument :  
 ECD\_L  
 ClientSampled :



#13 Dieldrin  
 R.T.: 6.419 min  
 Delta R.T.: -0.007 min  
 Response: 966462  
 Conc: 0.32 ng/ml

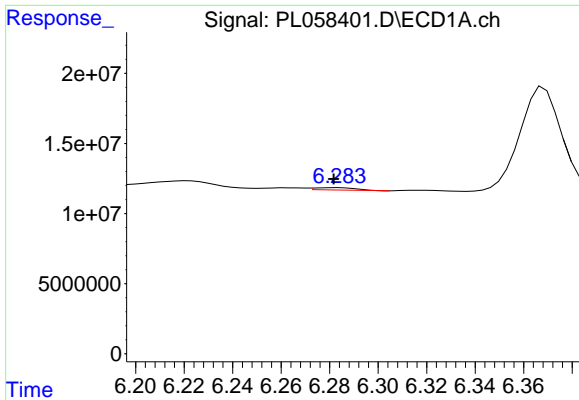


#14 Endrin  
 R.T.: 6.004 min  
 Delta R.T.: -0.004 min  
 Response: 19612170  
 Conc: 1.68 ng/ml



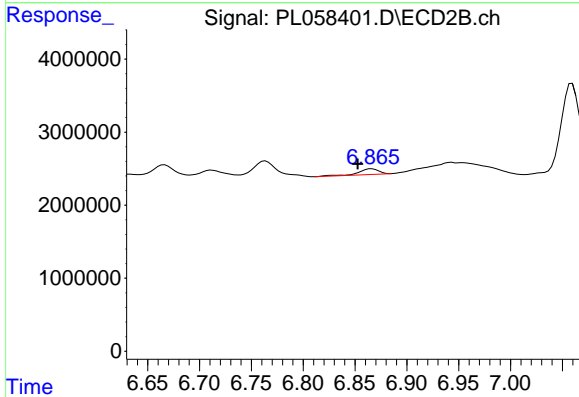
#14 Endrin  
 R.T.: 6.666 min  
 Delta R.T.: 0.024 min  
 Response: 498012  
 Conc: 0.20 ng/ml



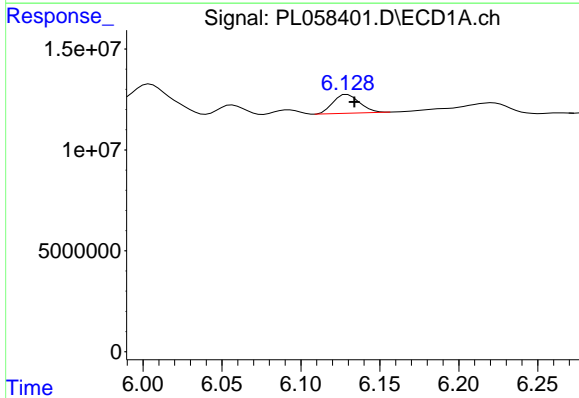


#15 Endosulfan II  
 R.T.: 6.283 min  
 Delta R.T.: 0.001 min  
 Response: 1967238  
 Conc: 0.18 ng/ml

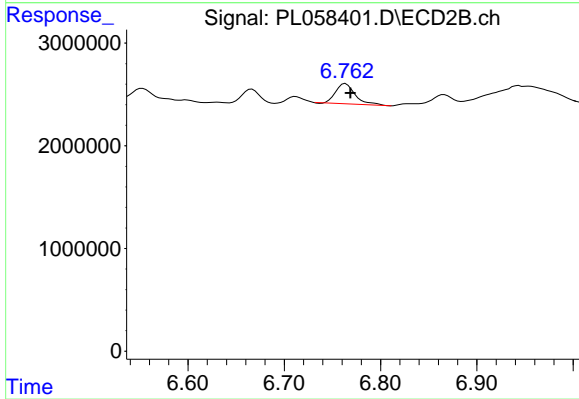
Instrument :  
 ECD\_L  
 ClientSampled :



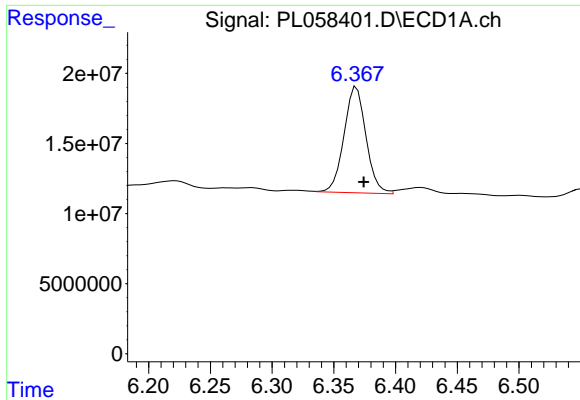
#15 Endosulfan II  
 R.T.: 6.866 min  
 Delta R.T.: 0.014 min  
 Response: 1058007  
 Conc: 0.41 ng/ml



#16 4,4'-DDD  
 R.T.: 6.130 min  
 Delta R.T.: -0.004 min  
 Response: 10924200  
 Conc: 1.09 ng/ml



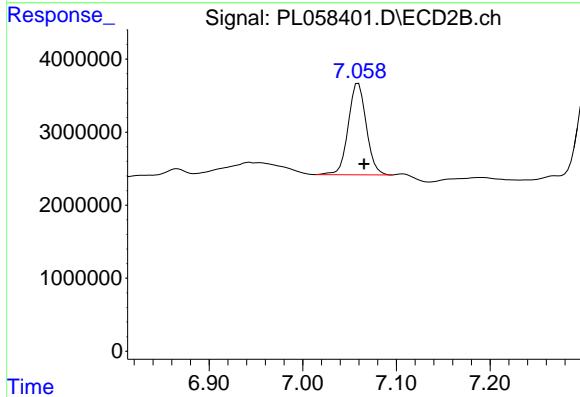
#16 4,4'-DDD  
 R.T.: 6.764 min  
 Delta R.T.: -0.005 min  
 Response: 2782151  
 Conc: 1.22 ng/ml



#17 4,4'-DDT

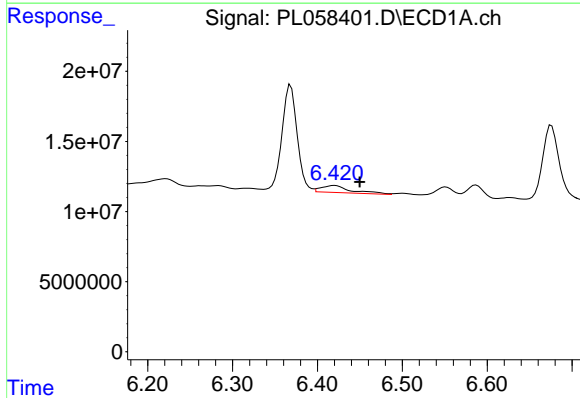
R.T.: 6.368 min  
 Delta R.T.: -0.006 min  
 Response: 93791958  
 Conc: 9.24 ng/ml

Instrument :  
 ECD\_L  
 ClientSampleId :



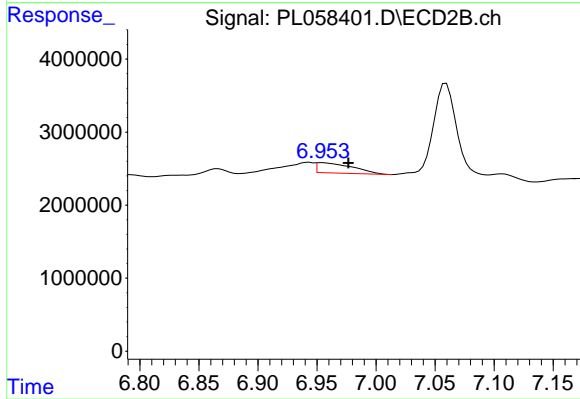
#17 4,4'-DDT

R.T.: 7.059 min  
 Delta R.T.: -0.006 min  
 Response: 16784487  
 Conc: 7.54 ng/ml



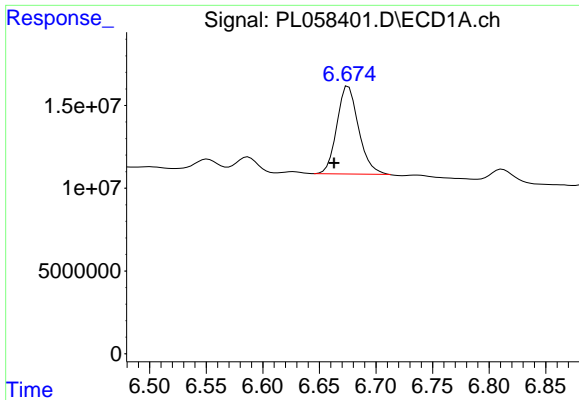
#18 Endrin aldehyde

R.T.: 6.420 min  
 Delta R.T.: -0.030 min  
 Response: 12454293  
 Conc: 1.33 ng/ml



#18 Endrin aldehyde

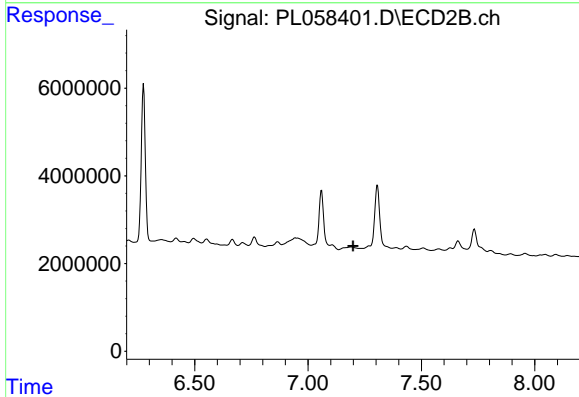
R.T.: 6.954 min  
 Delta R.T.: -0.022 min  
 Response: 2968488  
 Conc: 1.34 ng/ml



#19 Endosulfan Sulfate

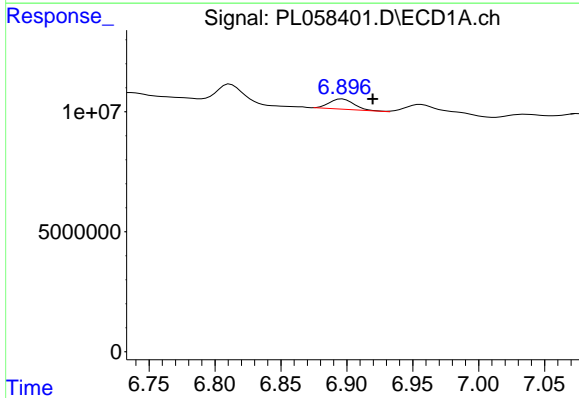
R.T.: 6.676 min  
 Delta R.T.: 0.013 min  
 Response: 69934824  
 Conc: 6.88 ng/ml

Instrument :  
 ECD\_L  
 ClientSampleId :



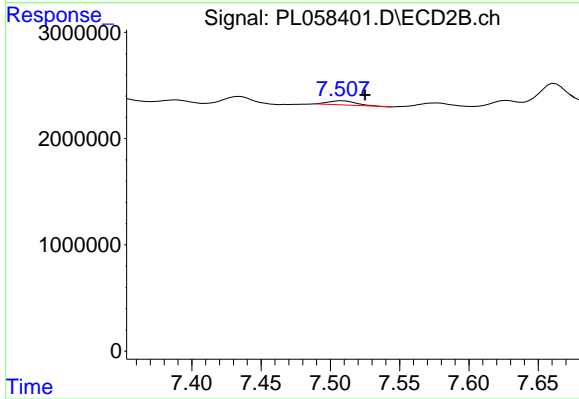
#19 Endosulfan Sulfate

R.T.: 7.191 min  
 Delta R.T.: -0.008 min  
 Response: -1225274  
 Conc: N.D.



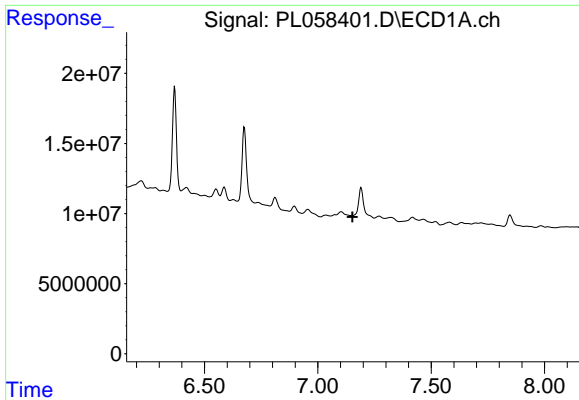
#20 Methoxychlor

R.T.: 6.897 min  
 Delta R.T.: -0.023 min  
 Response: 5638185  
 Conc: 1.02 ng/ml



#20 Methoxychlor

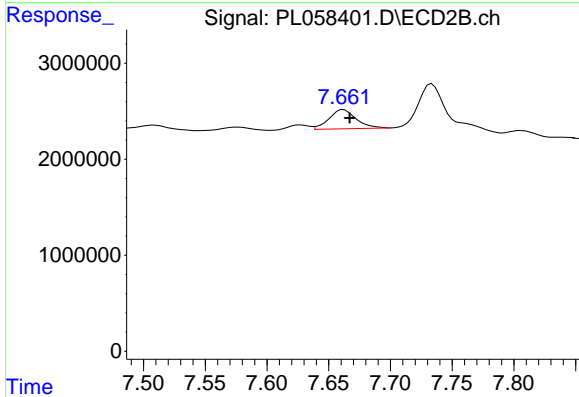
R.T.: 7.509 min  
 Delta R.T.: -0.016 min  
 Response: 558981  
 Conc: 0.44 ng/ml



#21 Endrin ketone

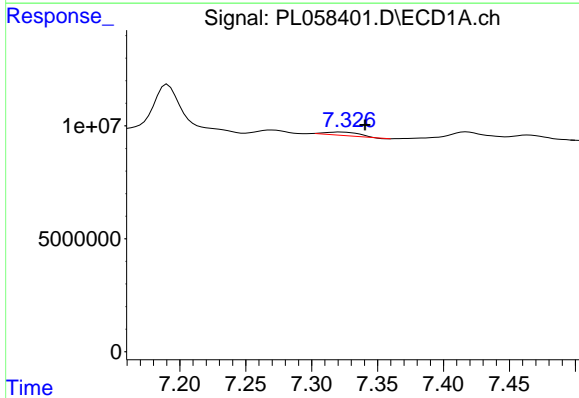
R.T.: 0.000 min  
 Exp R.T.: 7.153 min  
 Response: 0  
 Conc: N.D.

Instrument :  
 ECD\_L  
 ClientSampleId :



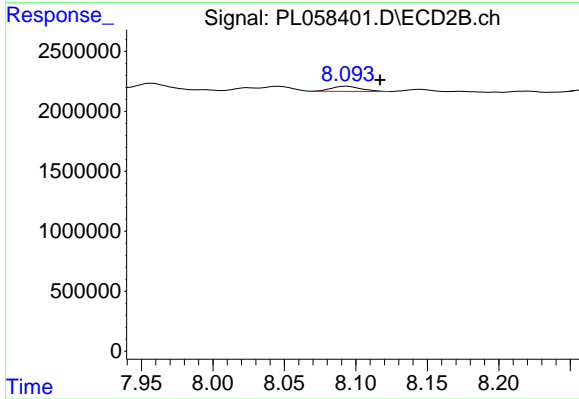
#21 Endrin ketone

R.T.: 7.662 min  
 Delta R.T.: -0.005 min  
 Response: 3071518  
 Conc: 1.24 ng/ml



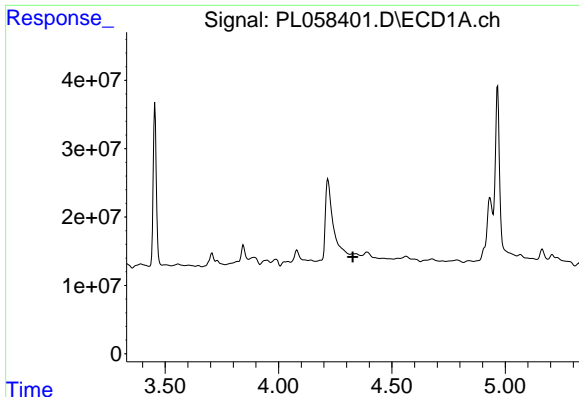
#22 Mirex

R.T.: 7.322 min  
 Delta R.T.: -0.019 min  
 Response: 2604813  
 Conc: 0.32 ng/ml



#22 Mirex

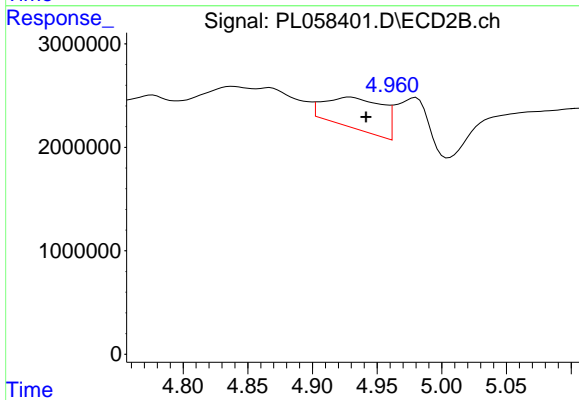
R.T.: 8.094 min  
 Delta R.T.: -0.023 min  
 Response: 596696  
 Conc: 0.32 ng/ml



#23 Chlordane-1

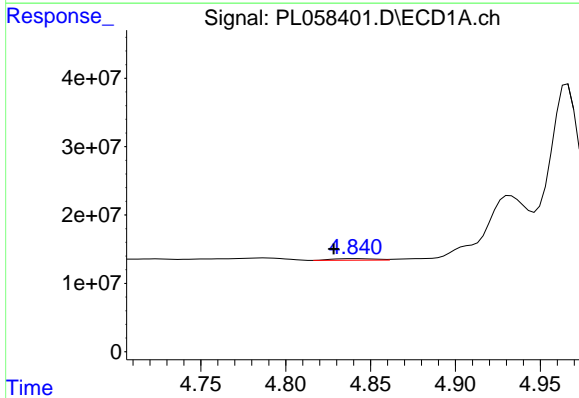
R.T.: 4.327 min  
 Delta R.T.: 0.000 min  
 Response: -1212320  
 Conc: N.D.

Instrument :  
 ECD\_L  
 ClientSampleId :



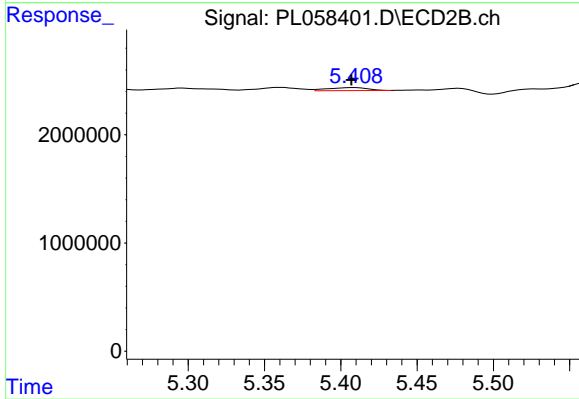
#23 Chlordane-1

R.T.: 4.930 min  
 Delta R.T.: -0.012 min  
 Response: 9348307  
 Conc: 106.01 ng/ml



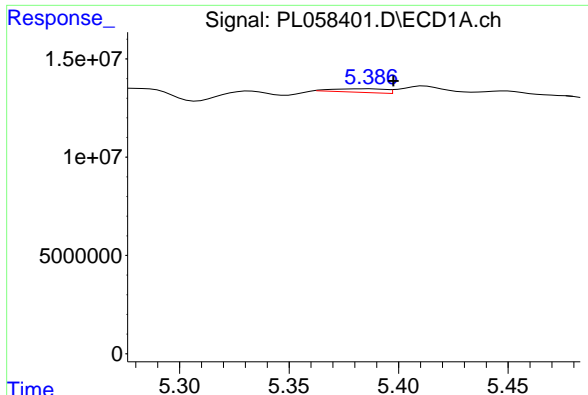
#24 Chlordane-2

R.T.: 4.841 min  
 Delta R.T.: 0.013 min  
 Response: 4114722  
 Conc: 10.19 ng/ml



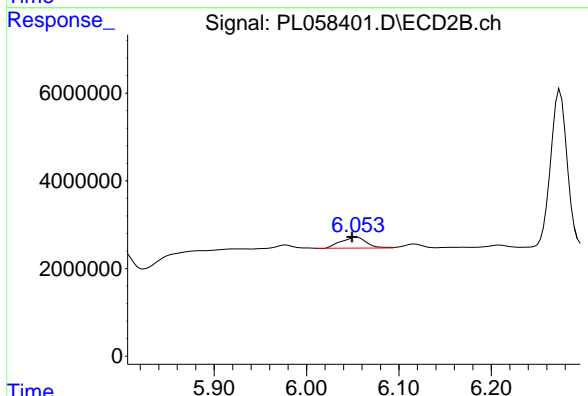
#24 Chlordane-2

R.T.: 5.409 min  
 Delta R.T.: 0.002 min  
 Response: 510049  
 Conc: 4.89 ng/ml

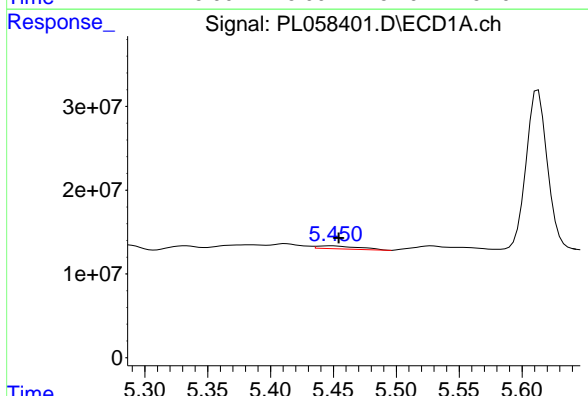


#25 Chlordane-3  
 R.T.: 5.385 min  
 Delta R.T.: -0.012 min  
 Response: 3054067  
 Conc: 2.50 ng/ml

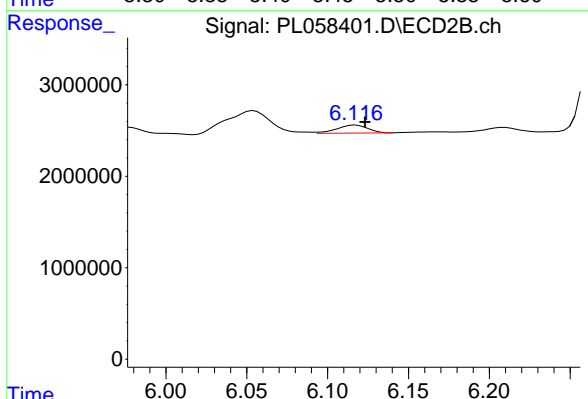
Instrument :  
 ECD\_L  
 ClientSampled :



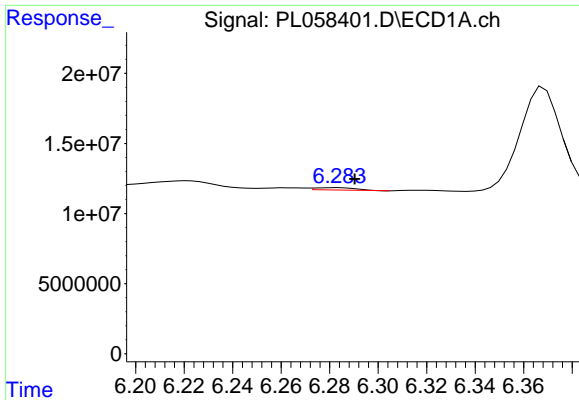
#25 Chlordane-3  
 R.T.: 6.054 min  
 Delta R.T.: 0.005 min  
 Response: 4775810  
 Conc: 11.04 ng/ml



#26 Chlordane-4  
 R.T.: 5.449 min  
 Delta R.T.: -0.006 min  
 Response: 8192035  
 Conc: 7.88 ng/ml

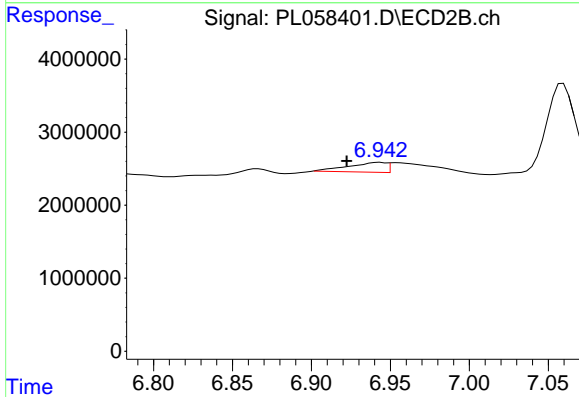


#26 Chlordane-4  
 R.T.: 6.117 min  
 Delta R.T.: -0.006 min  
 Response: 1164932  
 Conc: 2.22 ng/ml

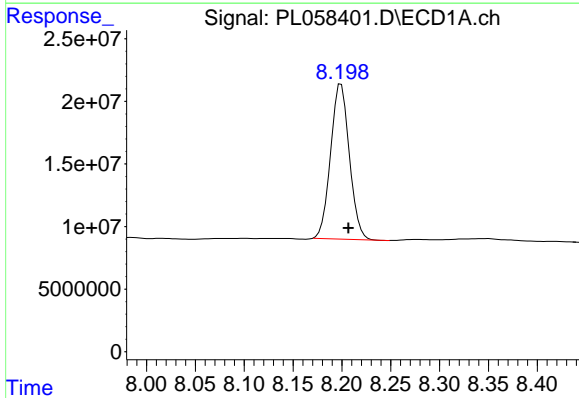


#27 Chlordane-5  
 R.T.: 6.283 min  
 Delta R.T.: -0.007 min  
 Response: 1967238  
 Conc: 5.20 ng/ml

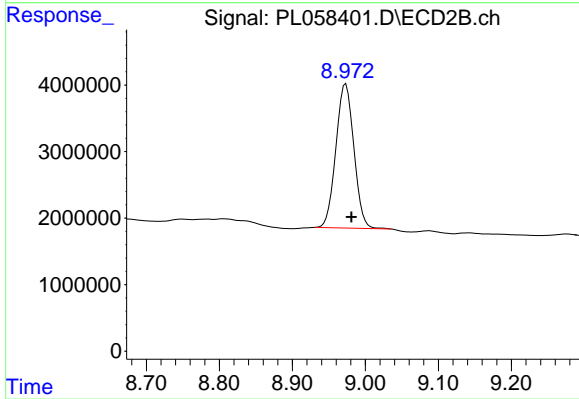
Instrument :  
 ECD\_L  
 ClientSampleId :



#27 Chlordane-5  
 R.T.: 6.943 min  
 Delta R.T.: 0.021 min  
 Response: 2259658  
 Conc: 26.50 ng/ml



#28 Decachlorobiphenyl  
 R.T.: 8.199 min  
 Delta R.T.: -0.007 min  
 Response: 165636423  
 Conc: 16.07 ng/ml



#28 Decachlorobiphenyl  
 R.T.: 8.973 min  
 Delta R.T.: -0.008 min  
 Response: 37073170  
 Conc: 16.60 ng/ml