

Data Path : Z:\pestpcbsrv\HPCHEM1\ECD_L\Data\PL042721\
 Data File : PL066517.D
 Signal(s) : Signal #1: ECD1A.ch Signal #2: ECD2B.ch
 Acq On : 27 Apr 2021 18:17
 Operator : AR\AJ
 Sample : PSTDCCC050
 Misc :
 ALS Vial : 4 Sample Multiplier: 1

Instrument :
 ECD_L
 ClientSampleId :

Integration File signal 1: autoint1.e
 Integration File signal 2: autoint2.e
 Quant Time: Apr 28 08:55:30 2021
 Quant Method : Z:\pestpcbsrv\HPCHEM1\ECD_L\methods\PL042621.M
 Quant Title : GC Extractables
 QLast Update : Wed Apr 28 08:49:49 2021
 Response via : Initial Calibration
 Integrator: ChemStation

Volume Inj. : 1 µl
 Signal #1 Phase : ZB-MR2 Signal #2 Phase: ZB-MR1
 Signal #1 Info : 30M x 0.32mm x0.2 Signal #2 Info : 30M x 0.32mm x0.5µm

	Compound	RT#1	RT#2	Resp#1	Resp#2	ng/ml	ng/ml

System Monitoring Compounds							
1)	SA Tetrachlo...	3.429	4.154	197.1E6	174.7E6	52.312	49.739
28)	SA Decachlor...	8.163	9.352	157.5E6	127.8E6	41.066	41.299
Target Compounds							
2)	A alpha-BHC	3.863	4.559	326.9E6	259.1E6	52.534	50.365
3)	MA gamma-BHC...	4.142	4.852	289.8E6	236.9E6	52.675	49.113
4)	MA Heptachlor	4.441	5.367	285.9E6	230.5E6	51.207	46.681
5)	MB Aldrin	4.685	5.680	273.6E6	205.0E6	52.449	43.846
6)	B beta-BHC	4.391	5.028	128.1E6	113.6E6	48.435	49.153
7)	B delta-BHC	4.591	5.251	296.7E6	221.7E6	52.151	50.043
8)	B Heptachlo...	5.124	6.075	250.9E6	177.5E6	51.231	47.983
9)	A Endosulfan I	5.458	6.439	231.2E6	166.6E6	50.108	43.737
10)	B gamma-Chl...	5.349	6.311	257.2E6	183.8E6	50.470	44.153
11)	B alpha-Chl...	5.407	6.384	248.1E6	180.1E6	50.391	43.405
12)	B 4,4'-DDE	5.575	6.539	230.1E6	166.3E6	50.424	43.842
13)	MA Dieldrin	5.700	6.700	247.5E6	172.9E6	51.023	44.156
14)	MA Endrin	5.954	6.923	202.9E6	132.6E6	46.578	42.301
15)	B Endosulfa...	6.225	7.136	195.2E6	142.6E6	47.313	43.175
16)	A 4,4'-DDD	6.087	7.039	190.3E6	138.0E6	50.103	44.318
17)	MA 4,4'-DDT	6.326	7.340	179.4E6	128.6E6	46.011	39.742
18)	B Endrin al...	6.394	7.262	161.3E6	119.2E6	47.619	42.620
19)	B Endosulfa...	6.606	7.486	202.4E6	145.5E6	46.837	42.532
20)	A Methoxychlor	6.875	7.800	89172384	71072811	45.397	39.622
21)	B Endrin ke...	7.092	7.967	208.2E6	156.8E6	47.523	44.189
22)	Mirex	7.279	8.422	160.0E6	115.2E6	43.545	41.291
23)	Chlordane-1	4.314f	0.000	3343432	0	19.780	N.D. #
24)	Chlordane-2	0.000	5.680f	0	205.0E6	N.D.	1262.122 #
25)	Chlordane-3	5.349	6.311	257.2E6	183.8E6	516.801	327.915 #
26)	Chlordane-4	5.407	6.384	248.1E6	180.1E6	587.945	268.187 #
27)	Chlordane-5	6.225	0.000	195.2E6	0	1159.328	N.D. #

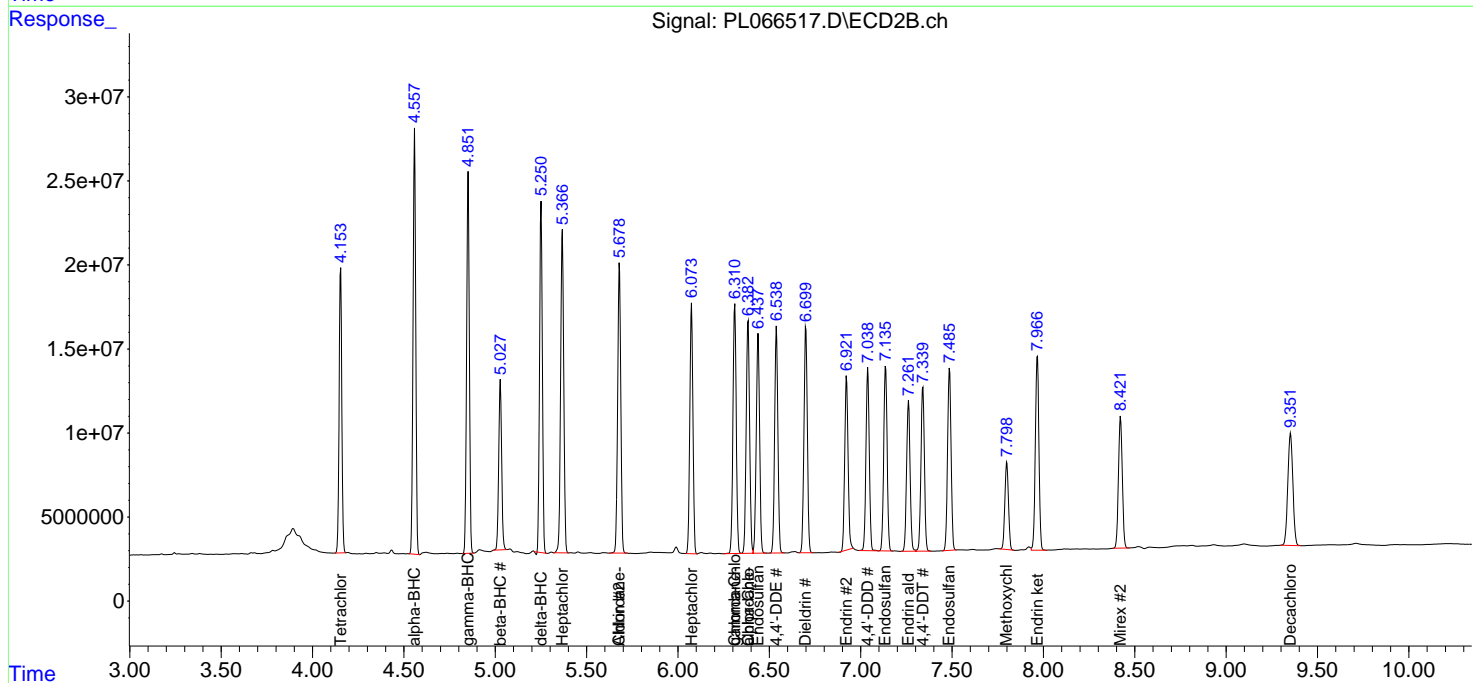
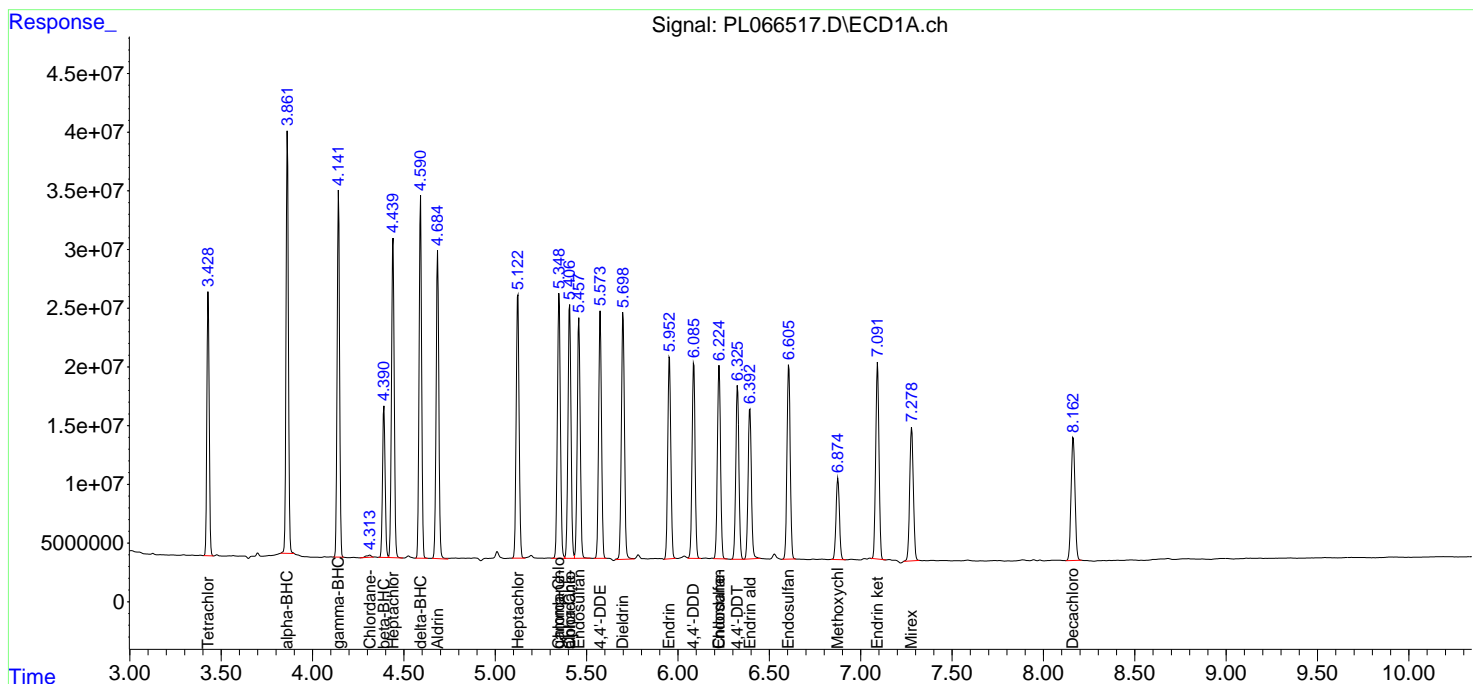
(f)=RT Delta > 1/2 Window (#)=Amounts differ by > 25% (m)=manual int.

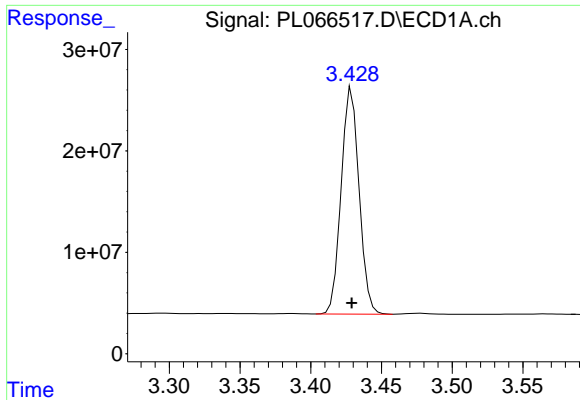
Data Path : Z:\pestpcbsrv\HPCHEM1\ECD_L\Data\PL042721\
 Data File : PL066517.D
 Signal(s) : Signal #1: ECD1A.ch Signal #2: ECD2B.ch
 Acq On : 27 Apr 2021 18:17
 Operator : AR\AJ
 Sample : PSTDCCC050
 Misc :
 ALS Vial : 4 Sample Multiplier: 1

Instrument :
 ECD_L
 ClientSampled :

Integration File signal 1: autoint1.e
 Integration File signal 2: autoint2.e
 Quant Time: Apr 28 08:55:30 2021
 Quant Method : Z:\pestpcbsrv\HPCHEM1\ECD_L\methods\PL042621.M
 Quant Title : GC Extractables
 QLast Update : Wed Apr 28 08:49:49 2021
 Response via : Initial Calibration
 Integrator: ChemStation

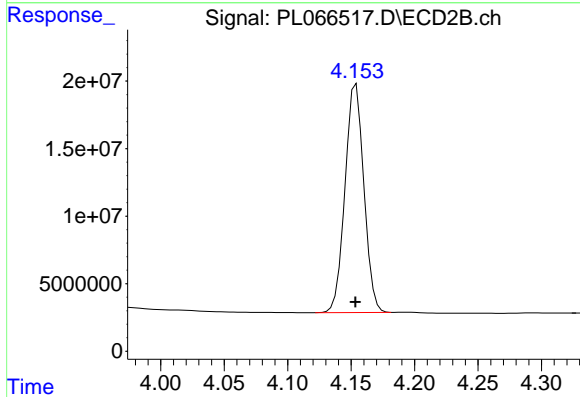
Volume Inj. : 1 µl
 Signal #1 Phase : ZB-MR2 Signal #2 Phase: ZB-MR1
 Signal #1 Info : 30M x 0.32mm x0.2 Signal #2 Info : 30M x 0.32mm x0.5µm



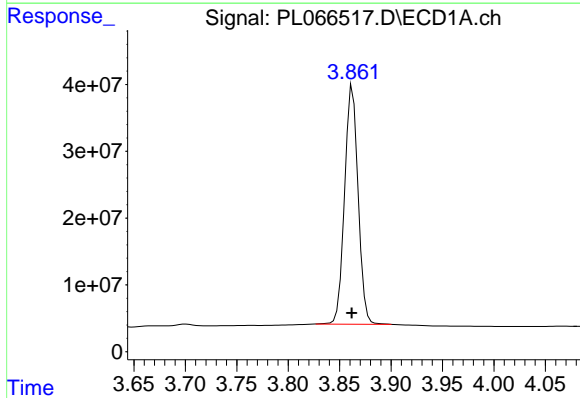


#1 Tetrachloro-m-xylene
 R.T.: 3.429 min
 Delta R.T.: 0.000 min
 Response: 197116396
 Conc: 52.31 ng/ml

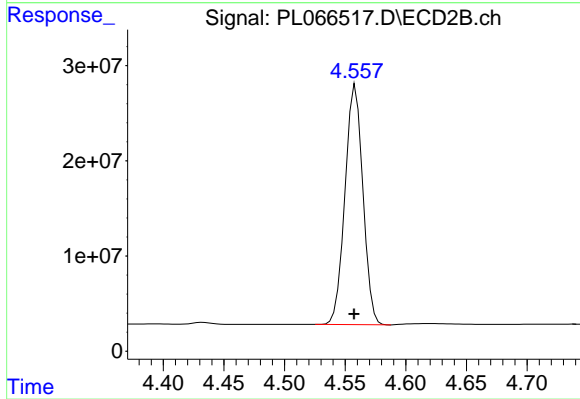
Instrument :
 ECD_L
 ClientSampleId :



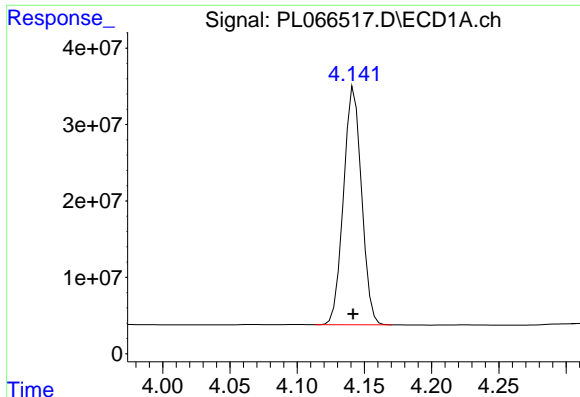
#1 Tetrachloro-m-xylene
 R.T.: 4.154 min
 Delta R.T.: 0.000 min
 Response: 174685374
 Conc: 49.74 ng/ml



#2 alpha-BHC
 R.T.: 3.863 min
 Delta R.T.: 0.000 min
 Response: 326920787
 Conc: 52.53 ng/ml



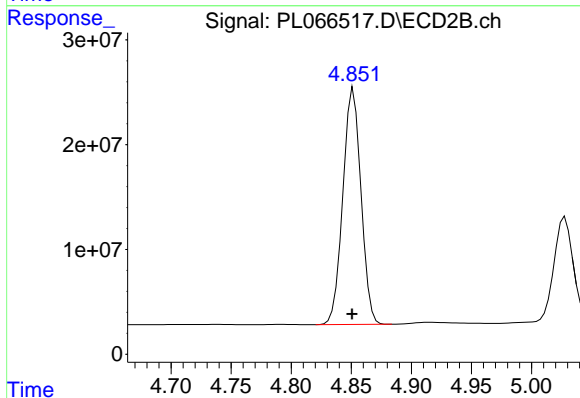
#2 alpha-BHC
 R.T.: 4.559 min
 Delta R.T.: 0.001 min
 Response: 259103003
 Conc: 50.37 ng/ml



#3 gamma-BHC (Lindane)

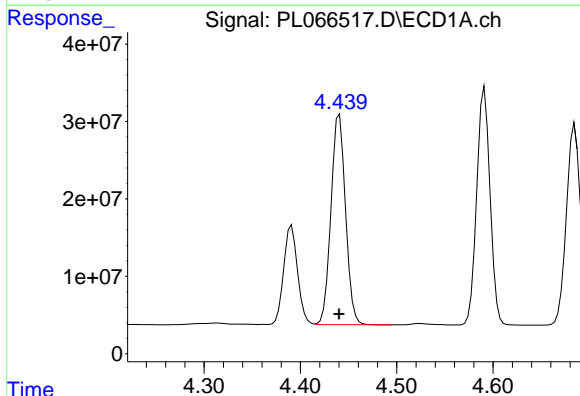
R.T.: 4.142 min
 Delta R.T.: 0.000 min
 Response: 289824058
 Conc: 52.67 ng/ml

Instrument :
 ECD_L
 ClientSampleId :



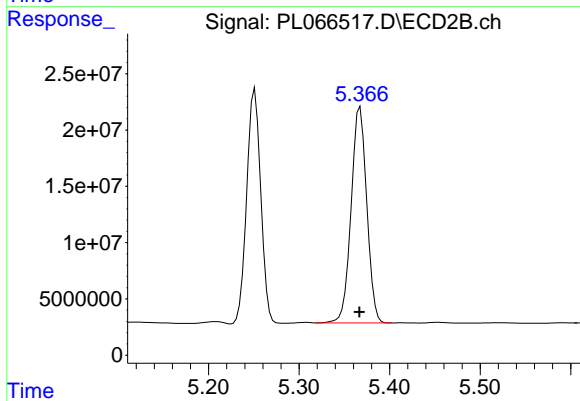
#3 gamma-BHC (Lindane)

R.T.: 4.852 min
 Delta R.T.: 0.001 min
 Response: 236925080
 Conc: 49.11 ng/ml



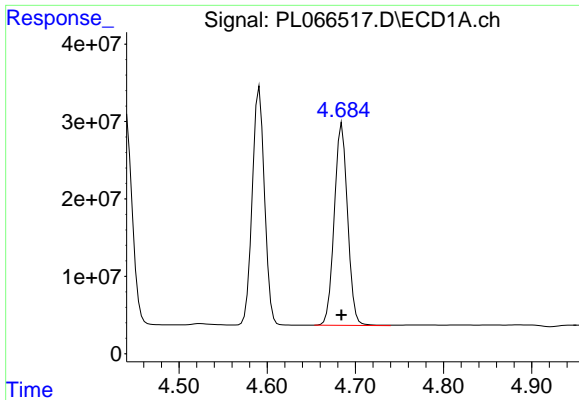
#4 Heptachlor

R.T.: 4.441 min
 Delta R.T.: 0.000 min
 Response: 285901391
 Conc: 51.21 ng/ml



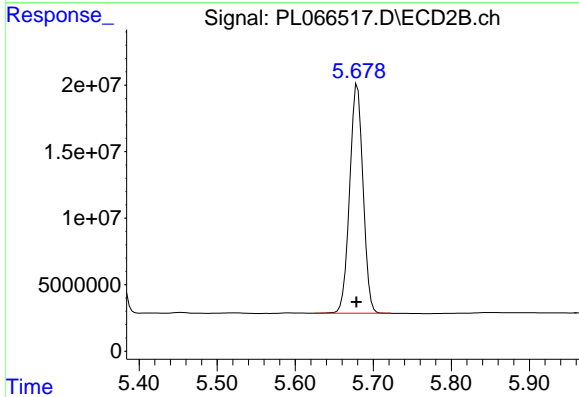
#4 Heptachlor

R.T.: 5.367 min
 Delta R.T.: 0.000 min
 Response: 230463299
 Conc: 46.68 ng/ml

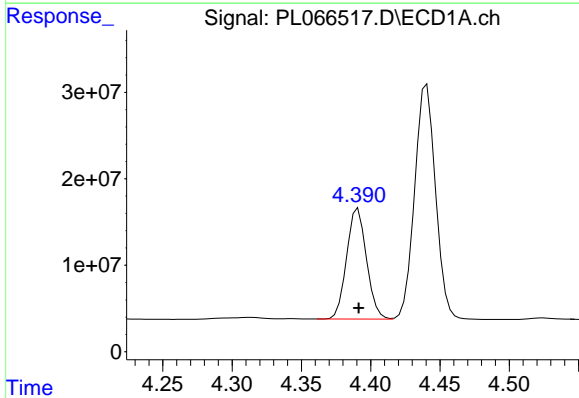


#5 Aldrin
 R.T.: 4.685 min
 Delta R.T.: 0.000 min
 Response: 273553144
 Conc: 52.45 ng/ml

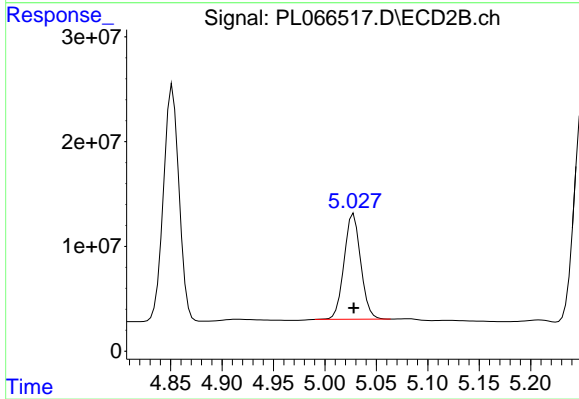
Instrument :
 ECD_L
 ClientSampled :



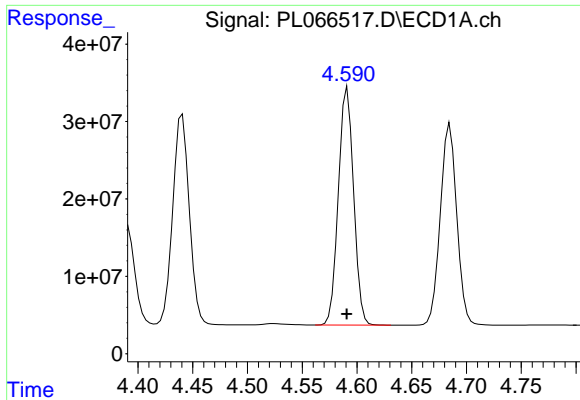
#5 Aldrin
 R.T.: 5.680 min
 Delta R.T.: 0.001 min
 Response: 204982810
 Conc: 43.85 ng/ml



#6 beta-BHC
 R.T.: 4.391 min
 Delta R.T.: 0.000 min
 Response: 128124891
 Conc: 48.43 ng/ml

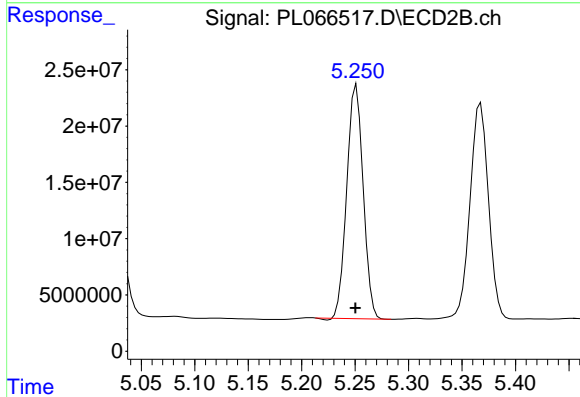


#6 beta-BHC
 R.T.: 5.028 min
 Delta R.T.: 0.000 min
 Response: 113647319
 Conc: 49.15 ng/ml

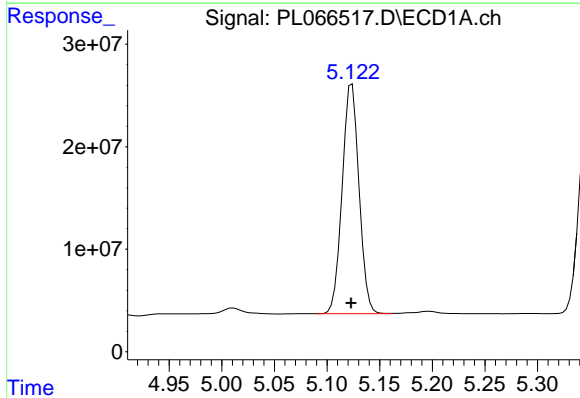


#7 delta-BHC
 R.T.: 4.591 min
 Delta R.T.: 0.000 min
 Response: 296700274
 Conc: 52.15 ng/ml

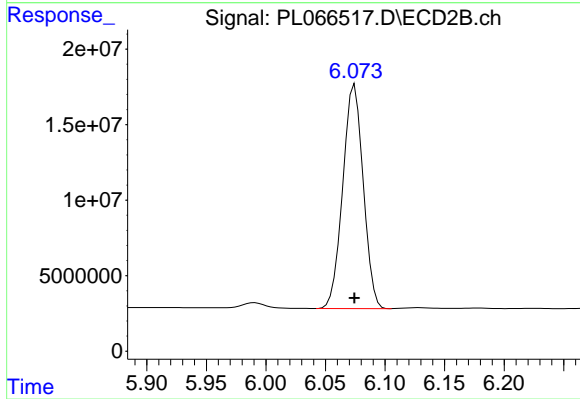
Instrument :
 ECD_L
 ClientSampled :



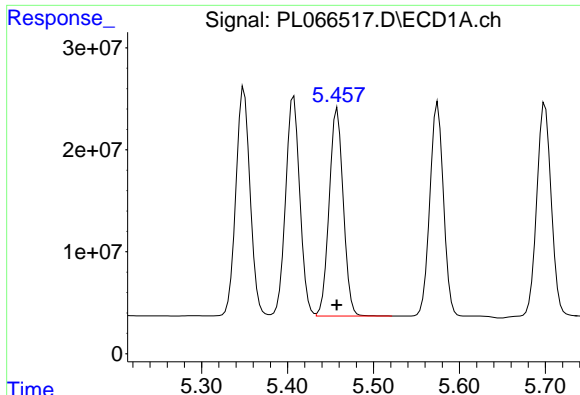
#7 delta-BHC
 R.T.: 5.251 min
 Delta R.T.: 0.000 min
 Response: 221685780
 Conc: 50.04 ng/ml



#8 Heptachlor epoxide
 R.T.: 5.124 min
 Delta R.T.: 0.000 min
 Response: 250888142
 Conc: 51.23 ng/ml



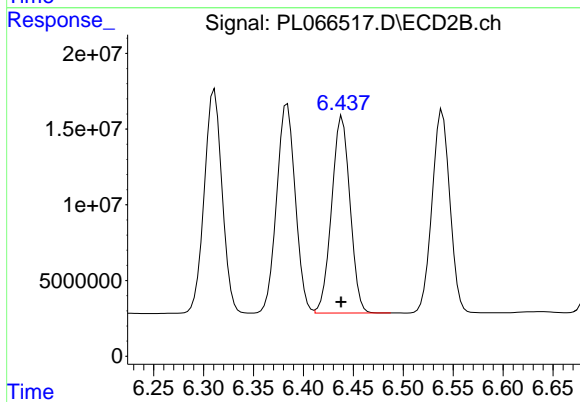
#8 Heptachlor epoxide
 R.T.: 6.075 min
 Delta R.T.: 0.000 min
 Response: 177520775
 Conc: 47.98 ng/ml



#9 Endosulfan I

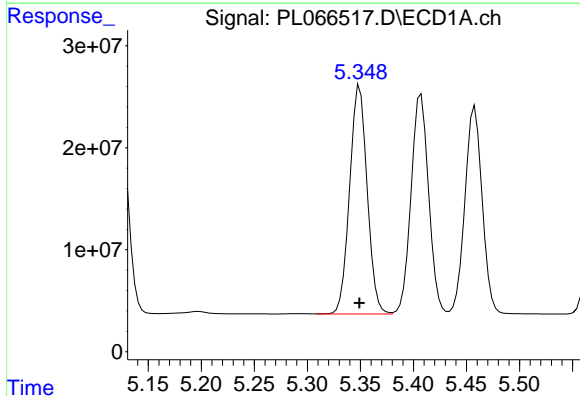
R.T.: 5.458 min
 Delta R.T.: 0.000 min
 Response: 231185691
 Conc: 50.11 ng/ml

Instrument :
 ECD_L
 ClientSampleId :



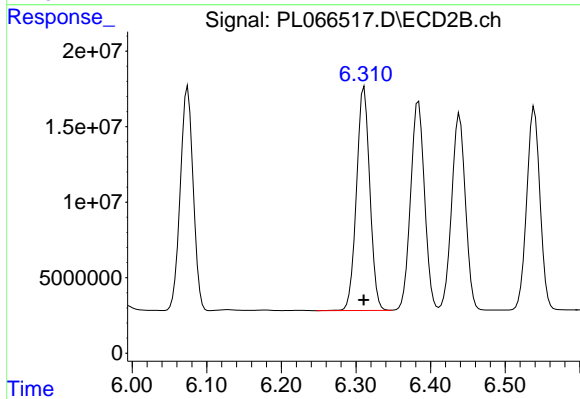
#9 Endosulfan I

R.T.: 6.439 min
 Delta R.T.: 0.001 min
 Response: 166559118
 Conc: 43.74 ng/ml



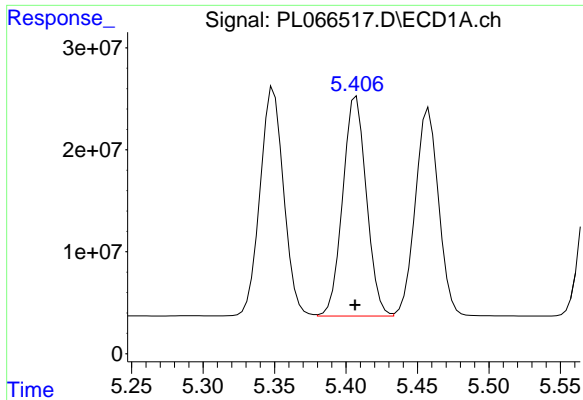
#10 gamma-Chlordane

R.T.: 5.349 min
 Delta R.T.: 0.000 min
 Response: 257184805
 Conc: 50.47 ng/ml



#10 gamma-Chlordane

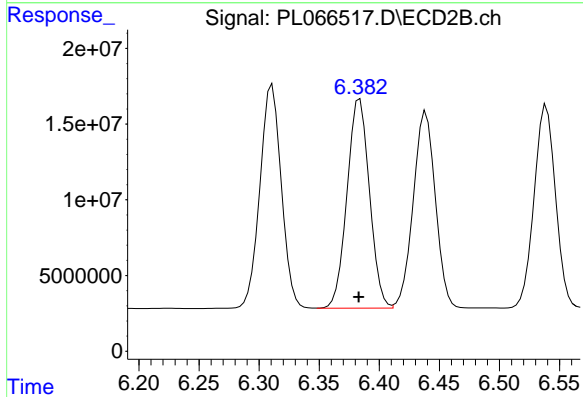
R.T.: 6.311 min
 Delta R.T.: 0.000 min
 Response: 183802639
 Conc: 44.15 ng/ml



#11 alpha-Chlordane

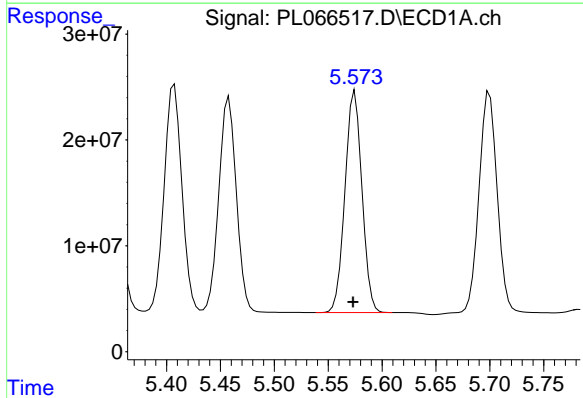
R.T.: 5.407 min
 Delta R.T.: 0.000 min
 Response: 248117216
 Conc: 50.39 ng/ml

Instrument :
 ECD_L
 ClientSampleId :



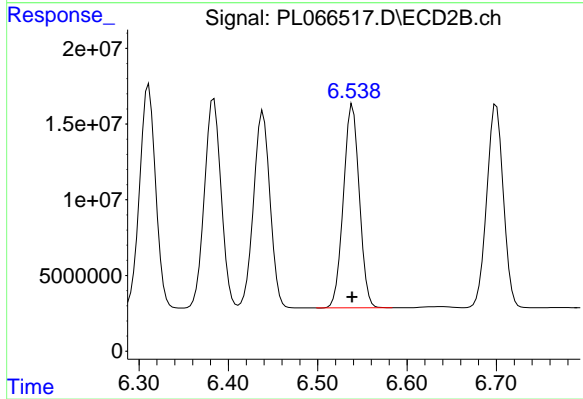
#11 alpha-Chlordane

R.T.: 6.384 min
 Delta R.T.: 0.000 min
 Response: 180055618
 Conc: 43.41 ng/ml



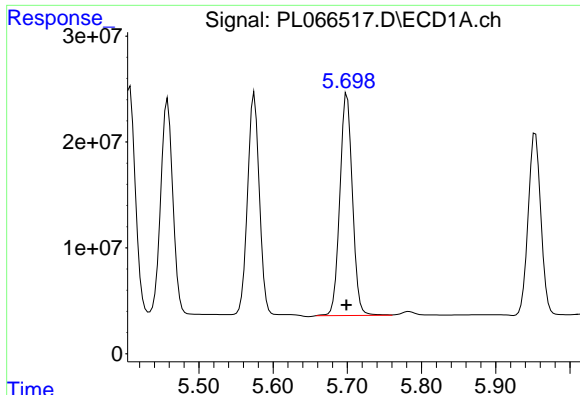
#12 4,4'-DDE

R.T.: 5.575 min
 Delta R.T.: 0.001 min
 Response: 230081503
 Conc: 50.42 ng/ml



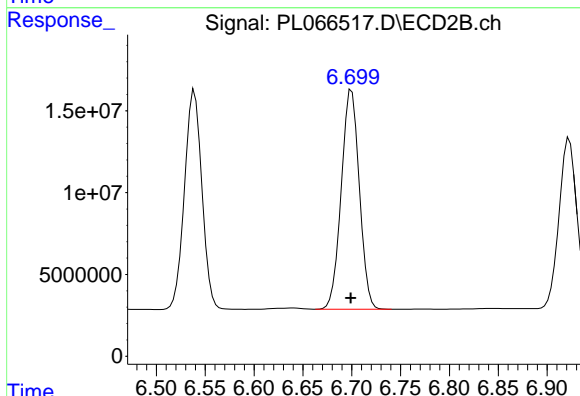
#12 4,4'-DDE

R.T.: 6.539 min
 Delta R.T.: 0.000 min
 Response: 166344270
 Conc: 43.84 ng/ml

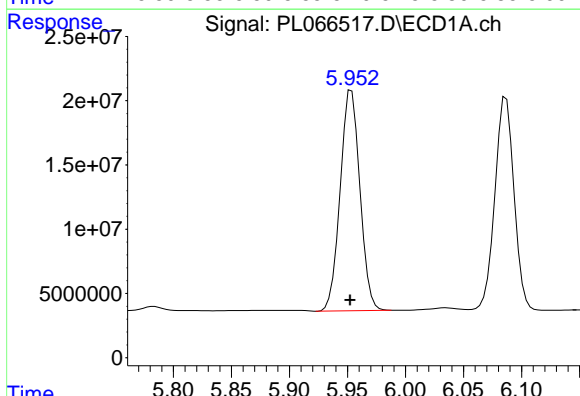


#13 Dieldrin
 R.T.: 5.700 min
 Delta R.T.: 0.000 min
 Response: 247538668
 Conc: 51.02 ng/ml

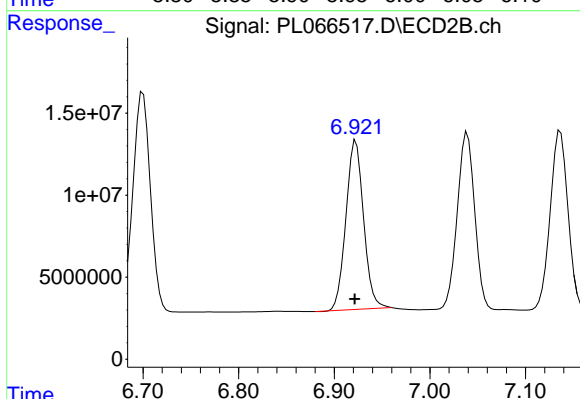
Instrument :
 ECD_L
 ClientSampled :



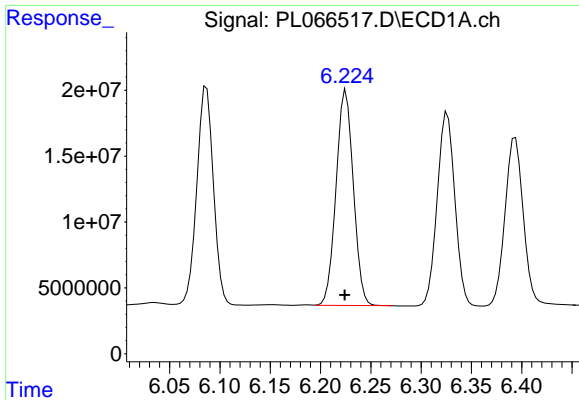
#13 Dieldrin
 R.T.: 6.700 min
 Delta R.T.: 0.001 min
 Response: 172880104
 Conc: 44.16 ng/ml



#14 Endrin
 R.T.: 5.954 min
 Delta R.T.: 0.001 min
 Response: 202897339
 Conc: 46.58 ng/ml



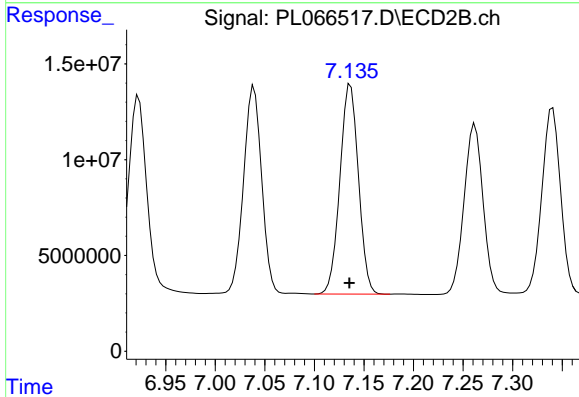
#14 Endrin
 R.T.: 6.923 min
 Delta R.T.: 0.001 min
 Response: 132558082
 Conc: 42.30 ng/ml



#15 Endosulfan II

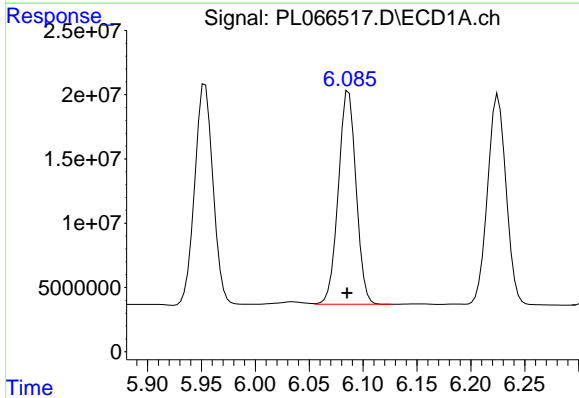
R.T.: 6.225 min
Delta R.T.: 0.001 min
Response: 195227457
Conc: 47.31 ng/ml

Instrument :
ECD_L
ClientSampled :



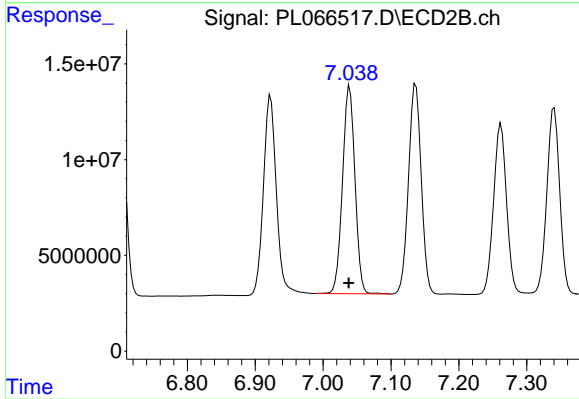
#15 Endosulfan II

R.T.: 7.136 min
Delta R.T.: 0.000 min
Response: 142599101
Conc: 43.18 ng/ml



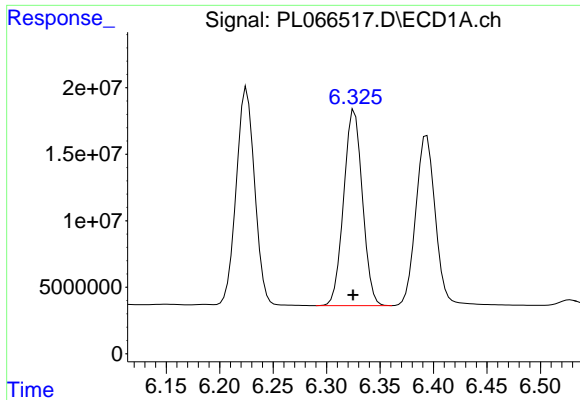
#16 4,4'-DDD

R.T.: 6.087 min
Delta R.T.: 0.002 min
Response: 190298183
Conc: 50.10 ng/ml



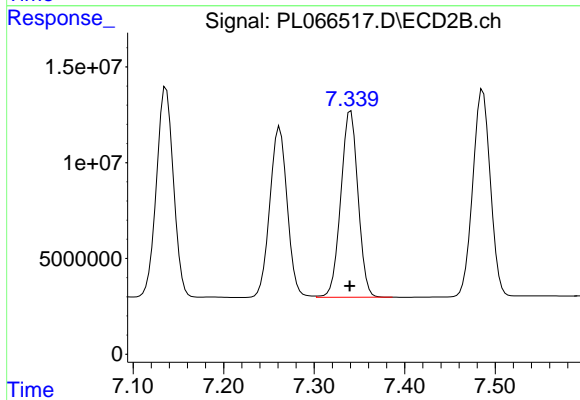
#16 4,4'-DDD

R.T.: 7.039 min
Delta R.T.: 0.001 min
Response: 138042864
Conc: 44.32 ng/ml

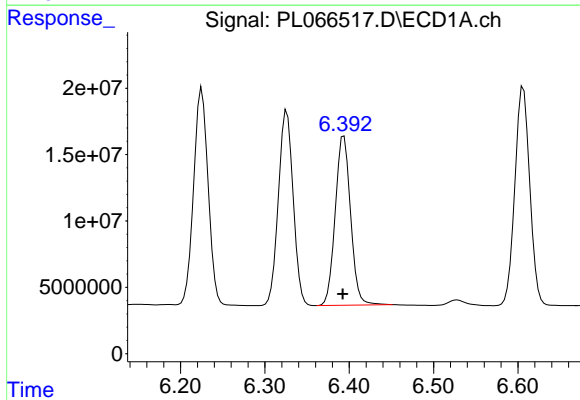


#17 4,4'-DDT
 R.T.: 6.326 min
 Delta R.T.: 0.001 min
 Response: 179405062
 Conc: 46.01 ng/ml

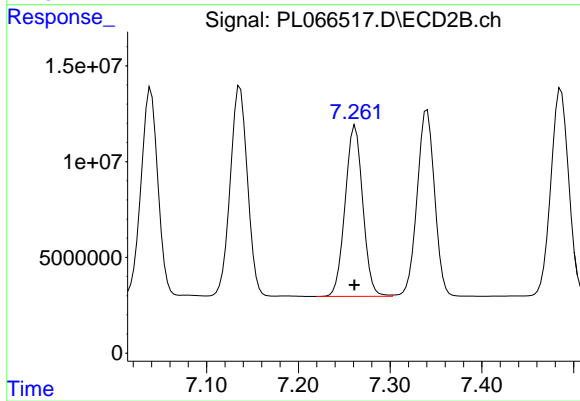
Instrument :
 ECD_L
 ClientSampleId :



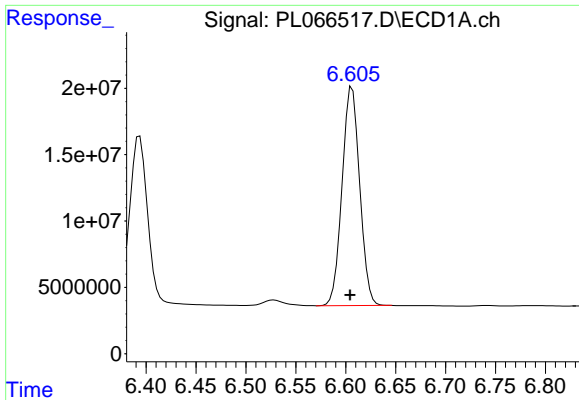
#17 4,4'-DDT
 R.T.: 7.340 min
 Delta R.T.: 0.001 min
 Response: 128629786
 Conc: 39.74 ng/ml



#18 Endrin aldehyde
 R.T.: 6.394 min
 Delta R.T.: 0.001 min
 Response: 161335176
 Conc: 47.62 ng/ml



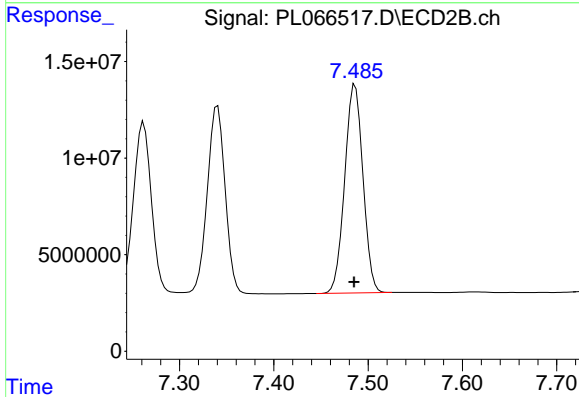
#18 Endrin aldehyde
 R.T.: 7.262 min
 Delta R.T.: 0.000 min
 Response: 119210042
 Conc: 42.62 ng/ml



#19 Endosulfan Sulfate

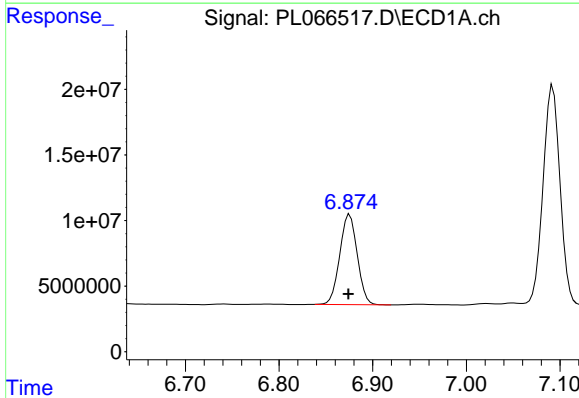
R.T.: 6.606 min
 Delta R.T.: 0.002 min
 Response: 202409965
 Conc: 46.84 ng/ml

Instrument :
 ECD_L
 ClientSampleId :



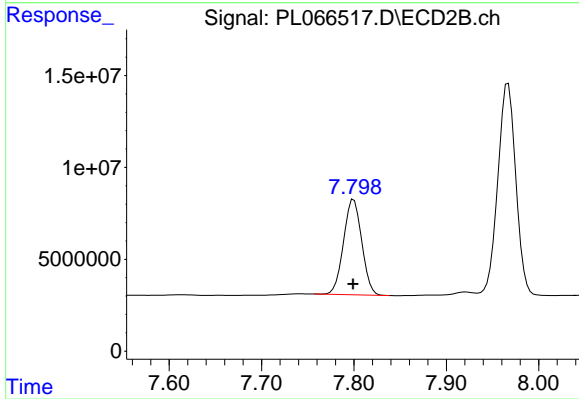
#19 Endosulfan Sulfate

R.T.: 7.486 min
 Delta R.T.: 0.001 min
 Response: 145483662
 Conc: 42.53 ng/ml



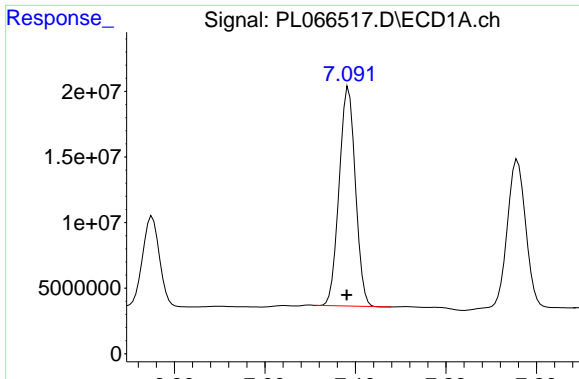
#20 Methoxychlor

R.T.: 6.875 min
 Delta R.T.: 0.001 min
 Response: 89172384
 Conc: 45.40 ng/ml



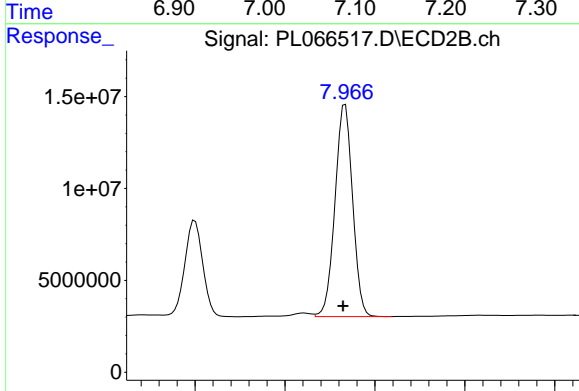
#20 Methoxychlor

R.T.: 7.800 min
 Delta R.T.: 0.000 min
 Response: 71072811
 Conc: 39.62 ng/ml

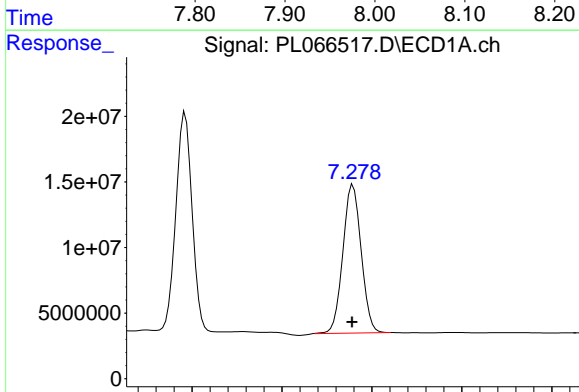


#21 Endrin ketone
 R.T.: 7.092 min
 Delta R.T.: 0.002 min
 Response: 208204997
 Conc: 47.52 ng/ml

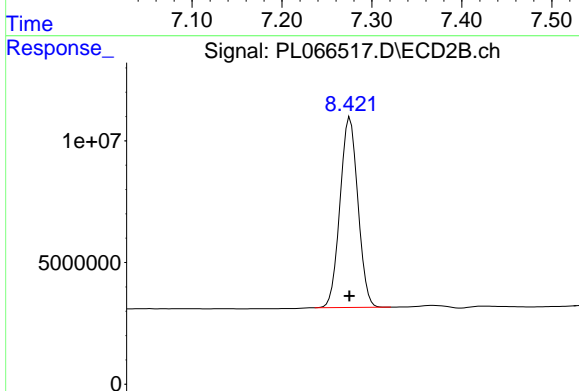
Instrument :
 ECD_L
 ClientSampleId :



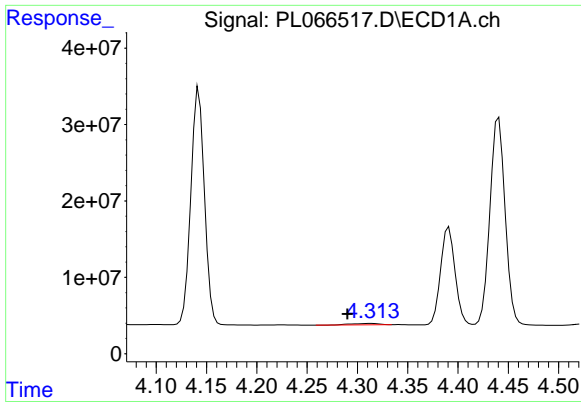
#21 Endrin ketone
 R.T.: 7.967 min
 Delta R.T.: 0.002 min
 Response: 156839502
 Conc: 44.19 ng/ml



#22 Mirex
 R.T.: 7.279 min
 Delta R.T.: 0.001 min
 Response: 159950244
 Conc: 43.54 ng/ml



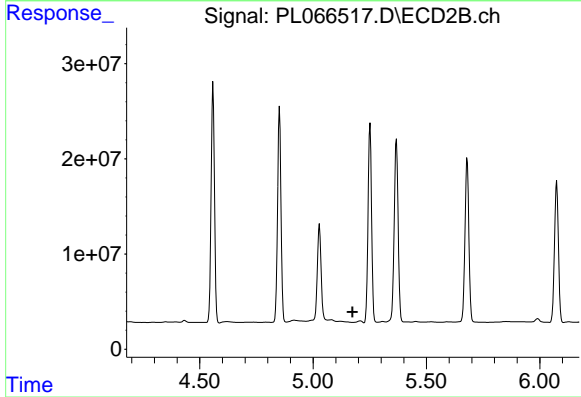
#22 Mirex
 R.T.: 8.422 min
 Delta R.T.: 0.000 min
 Response: 115188618
 Conc: 41.29 ng/ml



#23 Chlordane-1

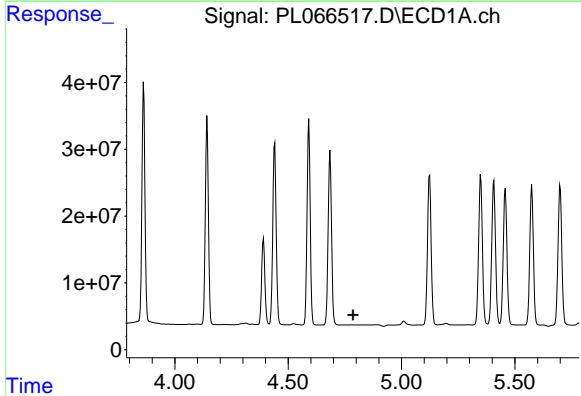
R.T.: 4.314 min
 Delta R.T.: 0.024 min
 Response: 3343432
 Conc: 19.78 ng/ml

Instrument :
 ECD_L
 ClientSampleId :



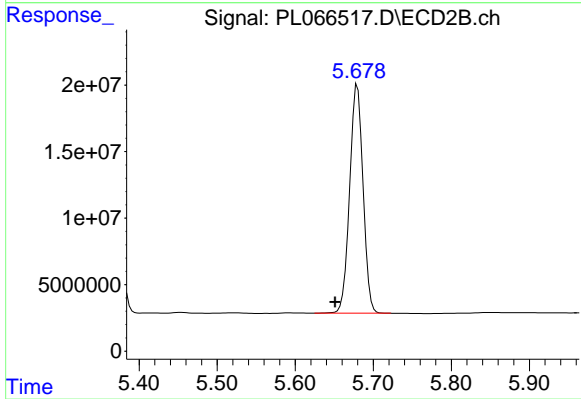
#23 Chlordane-1

R.T.: 0.000 min
 Exp R.T. : 5.174 min
 Response: 0
 Conc: N.D.



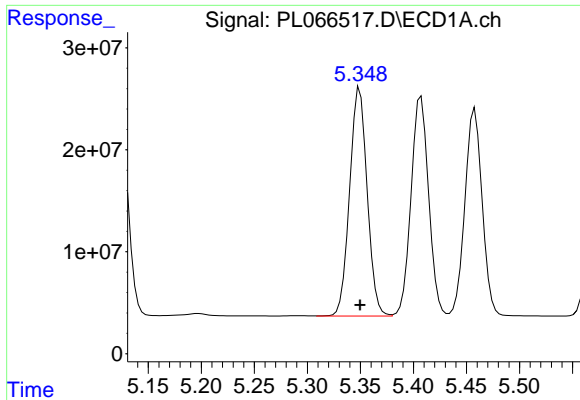
#24 Chlordane-2

R.T.: 0.000 min
 Exp R.T. : 4.786 min
 Response: 0
 Conc: N.D.



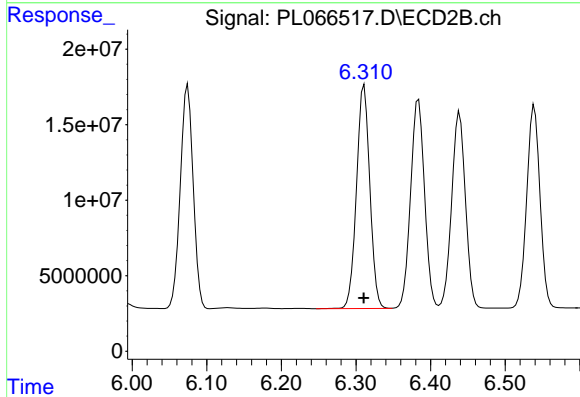
#24 Chlordane-2

R.T.: 5.680 min
 Delta R.T.: 0.029 min
 Response: 204982810
 Conc: 1262.12 ng/ml

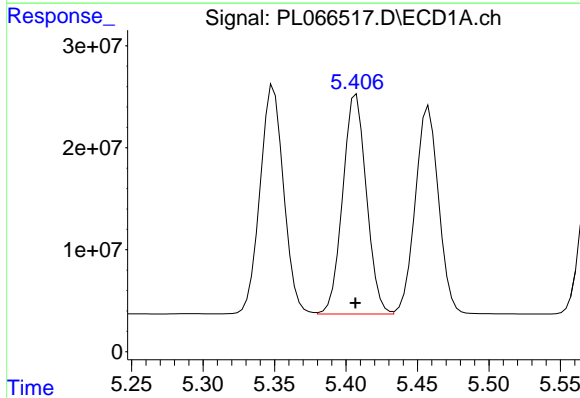


#25 Chlordane-3
R.T.: 5.349 min
Delta R.T.: 0.000 min
Response: 257184805
Conc: 516.80 ng/ml

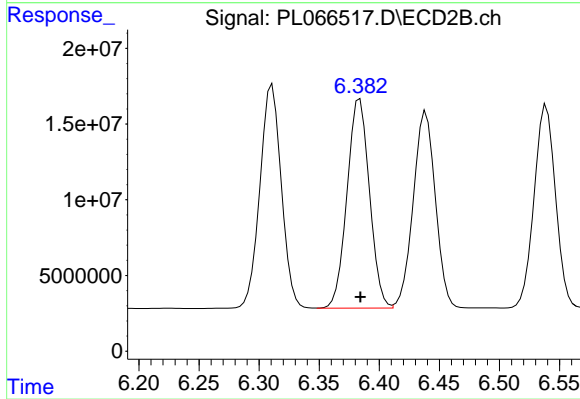
Instrument :
ECD_L
ClientSampled :



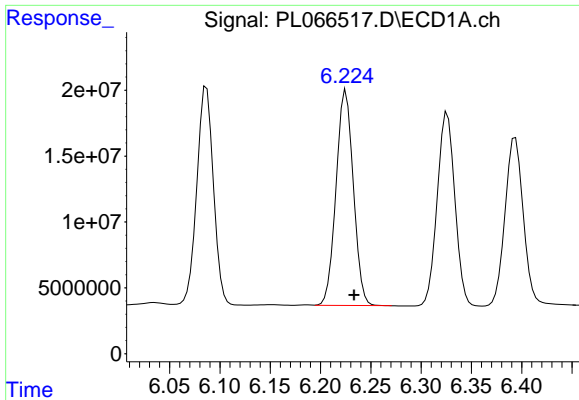
#25 Chlordane-3
R.T.: 6.311 min
Delta R.T.: 0.000 min
Response: 183802639
Conc: 327.92 ng/ml



#26 Chlordane-4
R.T.: 5.407 min
Delta R.T.: 0.000 min
Response: 248117216
Conc: 587.95 ng/ml

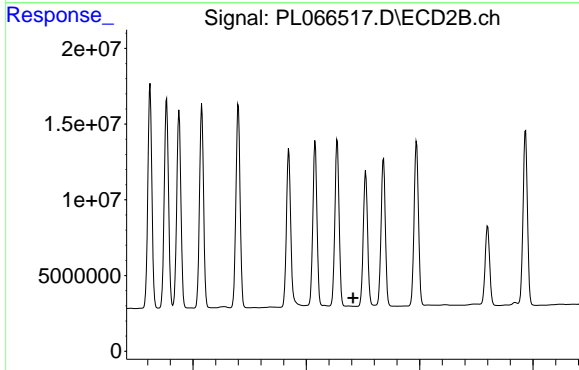


#26 Chlordane-4
R.T.: 6.384 min
Delta R.T.: 0.000 min
Response: 180055618
Conc: 268.19 ng/ml

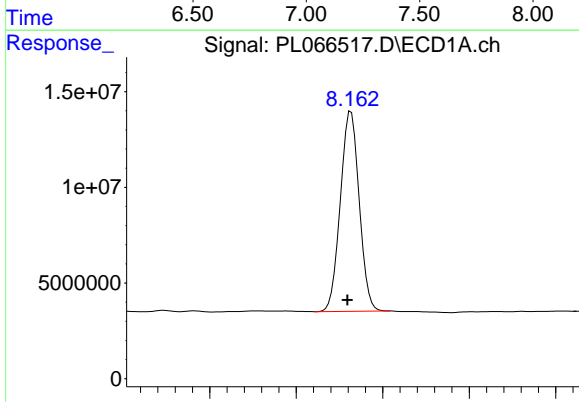


#27 Chlordane-5
 R.T.: 6.225 min
 Delta R.T.: -0.008 min
 Response: 195227457
 Conc: 1159.33 ng/ml

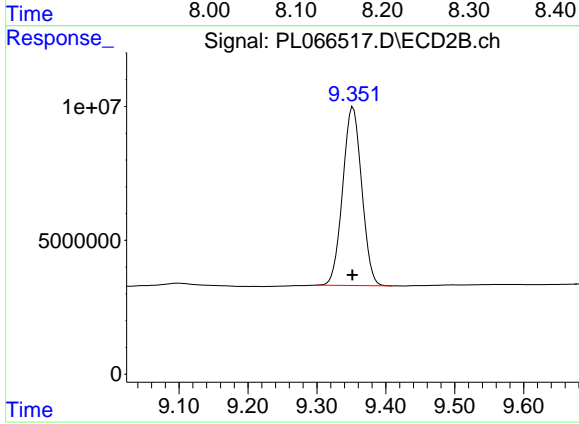
Instrument :
 ECD_L
 ClientSampled :



#27 Chlordane-5
 R.T.: 0.000 min
 Exp R.T. : 7.206 min
 Response: 0
 Conc: N.D.



#28 Decachlorobiphenyl
 R.T.: 8.163 min
 Delta R.T.: 0.004 min
 Response: 157456518
 Conc: 41.07 ng/ml



#28 Decachlorobiphenyl
 R.T.: 9.352 min
 Delta R.T.: 0.000 min
 Response: 127763304
 Conc: 41.30 ng/ml