

Data Path : Z:\pestpcbsrv\HPCHEM1\ECD\_L\Data\pl042722\  
 Data File : PL074403.D  
 Signal(s) : Signal #1: ECD1A.ch Signal #2: ECD2B.ch  
 Acq On : 27 Apr 2022 16:31  
 Operator : AR\AJ  
 Sample : N2557-01MSD  
 Misc :  
 ALS Vial : 12 Sample Multiplier: 1

**Instrument :**  
 ECD\_L  
**ClientSampleId :**  
 SOIL-CUTTINGSMSD

**Manual Integrations**  
**APPROVED**

Reviewed By :Abdul Mirza 04/28/2022  
 Supervised By :mohammad ahmed 04/28/2022

Integration File signal 1: autoint1.e  
 Integration File signal 2: autoint2.e  
 Quant Time: Apr 27 23:26:52 2022  
 Quant Method : Z:\pestpcbsrv\HPCHEM1\ECD\_L\methods\PL040822.M  
 Quant Title : GC Extractables  
 QLast Update : Thu Apr 14 09:29:23 2022  
 Response via : Initial Calibration  
 Integrator: ChemStation

Volume Inj. : 1 µl  
 Signal #1 Phase : ZB-MR2 Signal #2 Phase: ZB-MR1  
 Signal #1 Info : 30M x 0.32mm x0.2 Signal #2 Info : 30M x 0.32mm x0.5µm

Compound	RT#1	RT#2	Resp#1	Resp#2	ng/ml	ng/ml
-----						
System Monitoring Compounds						
1) SA Tetrachlo...	4.635	5.490	7146895	38601262	22.119	21.650
28) SA Decachlor...	10.406	11.334	11308793	39541873	21.746	22.387
Target Compounds						
2) A alpha-BHC	5.343	6.053	28889840	173.8E6	68.841	69.002
3) MA gamma-BHC...	5.766	6.442	28227192	160.8E6	67.304	67.918
4) MA Heptachlor	6.177	7.101	27065437	164.7E6	60.084	63.127
5) MB Aldrin	6.502	7.469	27881533	163.4E6	67.176	69.573
6) B beta-BHC	6.146	6.680	12000584	68780439	58.732m	61.029
7) B delta-BHC	6.409	6.947	28444782	164.1E6	68.762	67.196
8) B Heptachlo...	7.078	7.926	28130107	148.6E6	65.581	65.978
9) A Endosulfan I	7.482	8.327	26606850	135.6E6	64.876	68.867
10) B gamma-Chl...	7.356	8.194	28631833	150.0E6	65.282	67.270
11) B alpha-Chl...	7.426	8.277	28876435	146.8E6	65.365	68.212
12) B 4,4'-DDE	7.640	8.462	24989822	143.6E6	68.499	72.078
13) MA Dieldrin	7.768	8.612	28106475	145.2E6	65.429	72.422
14) MA Endrin	8.059	8.847	26334589	119.4E6	64.826	70.513
15) B Endosulfa...	8.370	9.070	27898855	121.8E6	67.689	70.118
16) A 4,4'-DDD	8.225	8.989	22890600	114.4E6	70.885	74.346
17) MA 4,4'-DDT	8.487	9.308	21907717	105.5E6	59.268	59.523
18) B Endrin al...	8.558	9.203	23121830	98254266	71.462	76.070
19) B Endosulfa...	8.790	9.441	27901309	114.8E6	65.339	68.990
20) A Methoxychlor	9.082	9.789	13852372	54000158	55.796	56.142
21) B Endrin ke...	9.309	9.929	33791644	124.4E6	69.167	71.894
22) Mirex	9.496	10.407	27820265	88174137	59.649	64.015

(f)=RT Delta > 1/2 Window (#)=Amounts differ by > 25% (m)=manual int.

Data Path : Z:\pestpcbsrv\HPCHEM1\ECD\_L\Data\pl042722\  
 Data File : PL074403.D  
 Signal(s) : Signal #1: ECD1A.ch Signal #2: ECD2B.ch  
 Acq On : 27 Apr 2022 16:31  
 Operator : AR\AJ  
 Sample : N2557-01MSD  
 Misc :  
 ALS Vial : 12 Sample Multiplier: 1

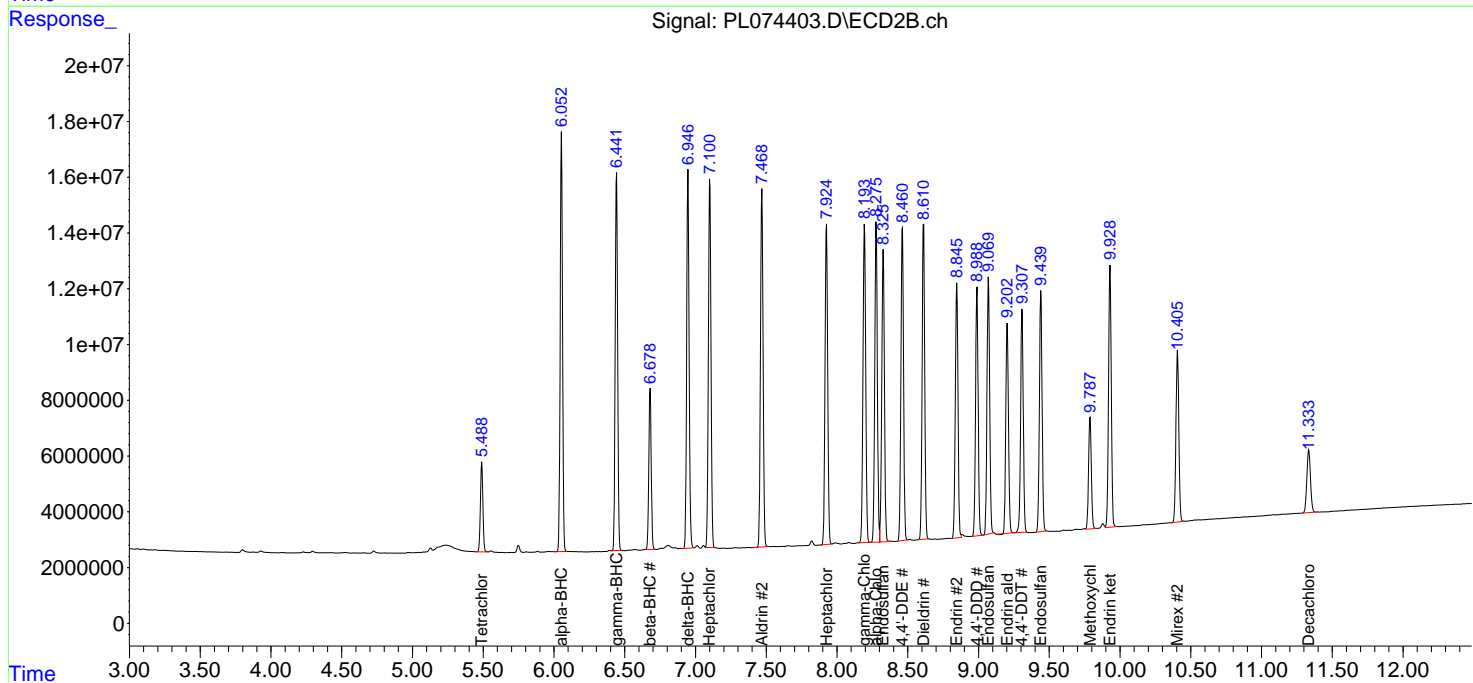
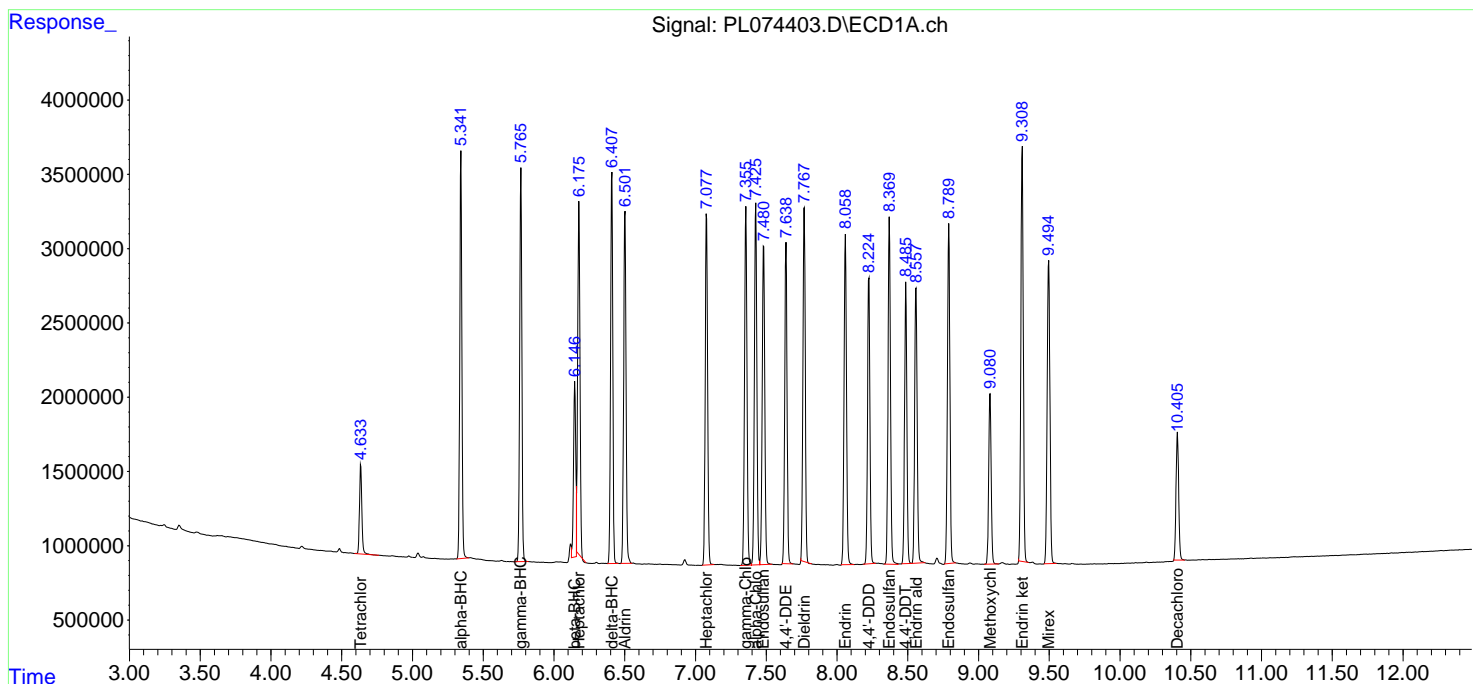
Instrument :  
 ECD\_L  
 ClientSampleId :  
 SOIL-CUTTINGSMSD

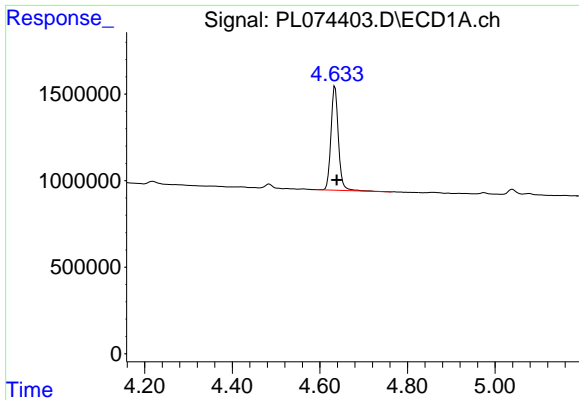
Manual Integrations  
 APPROVED

Reviewed By :Abdul Mirza 04/28/2022  
 Supervised By :mohammad ahmed 04/28/2022

Integration File signal 1: autoint1.e  
 Integration File signal 2: autoint2.e  
 Quant Time: Apr 27 23:26:52 2022  
 Quant Method : Z:\pestpcbsrv\HPCHEM1\ECD\_L\methods\PL040822.M  
 Quant Title : GC Extractables  
 QLast Update : Thu Apr 14 09:29:23 2022  
 Response via : Initial Calibration  
 Integrator: ChemStation

Volume Inj. : 1 µl  
 Signal #1 Phase : ZB-MR2 Signal #2 Phase: ZB-MR1  
 Signal #1 Info : 30M x 0.32mm x0.2 Signal #2 Info : 30M x 0.32mm x0.5µm

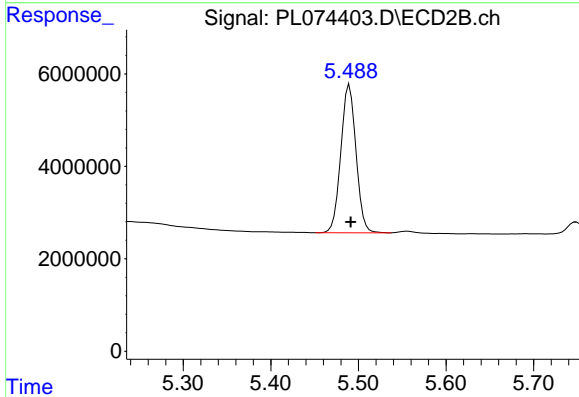




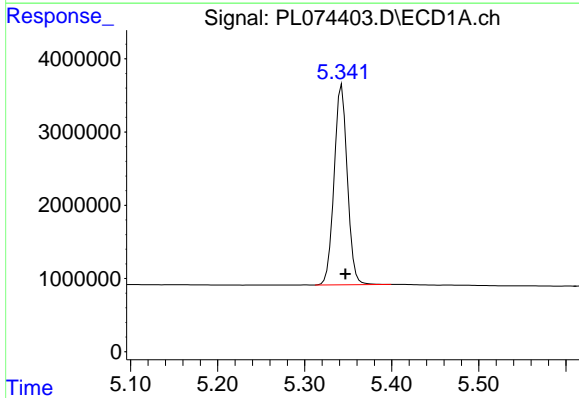
#1 Tetrachloro-m-xylene  
 R.T.: 4.635 min  
 Delta R.T.: -0.004 min  
 Response: 7146895  
 Conc: 22.12 ng/ml

Instrument : ECD\_L  
 Client Sample Id : SOIL-CUTTINGSMSD

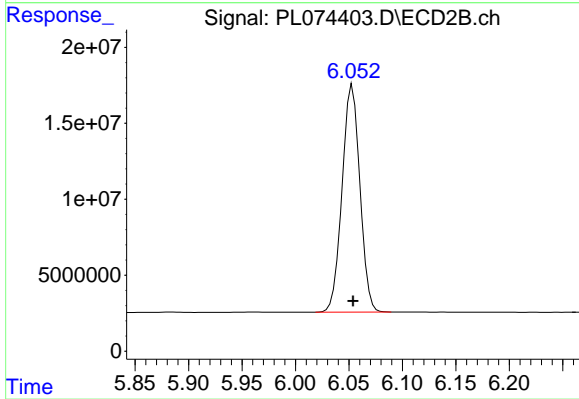
**Manual Integrations**  
**APPROVED**  
 Reviewed By :Abdul Mirza 04/28/2022  
 Supervised By :mohammad ahmed 04/28/2022



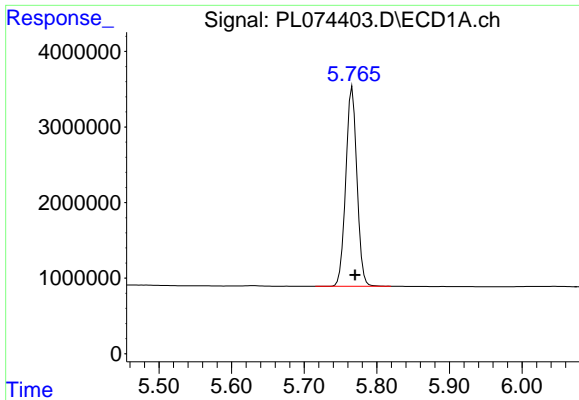
#1 Tetrachloro-m-xylene  
 R.T.: 5.490 min  
 Delta R.T.: -0.002 min  
 Response: 38601262  
 Conc: 21.65 ng/ml



#2 alpha-BHC  
 R.T.: 5.343 min  
 Delta R.T.: -0.004 min  
 Response: 28889840  
 Conc: 68.84 ng/ml



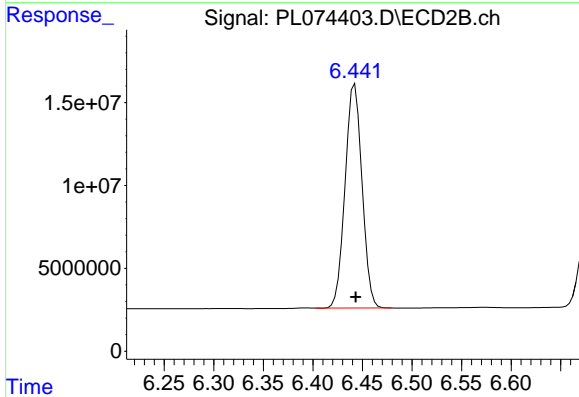
#2 alpha-BHC  
 R.T.: 6.053 min  
 Delta R.T.: 0.000 min  
 Response: 173754311  
 Conc: 69.00 ng/ml



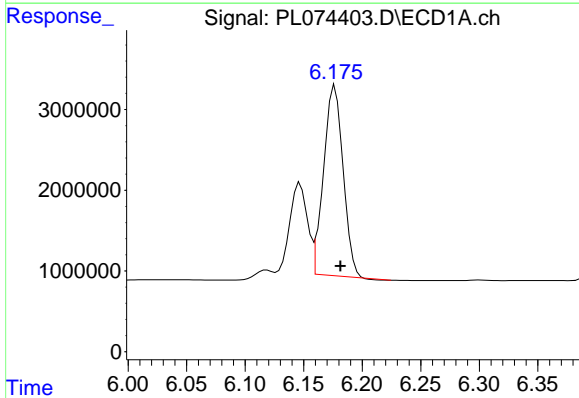
#3 gamma-BHC (Lindane)  
 R.T.: 5.766 min  
 Delta R.T.: -0.004 min  
 Response: 28227192  
 Conc: 67.30 ng/ml

Instrument : ECD\_L  
 ClientSampleId : SOIL-CUTTINGSMSD

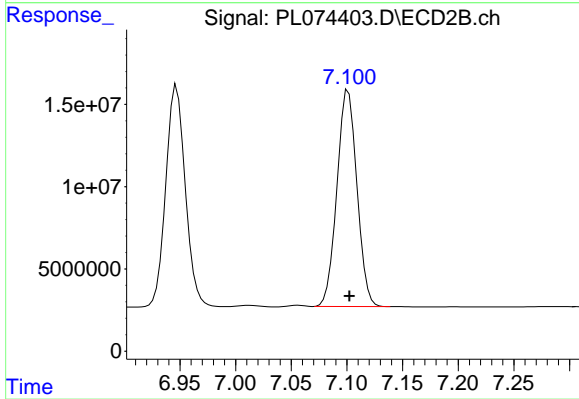
**Manual Integrations**  
**APPROVED**  
 Reviewed By :Abdul Mirza 04/28/2022  
 Supervised By :mohammad ahmed 04/28/2022



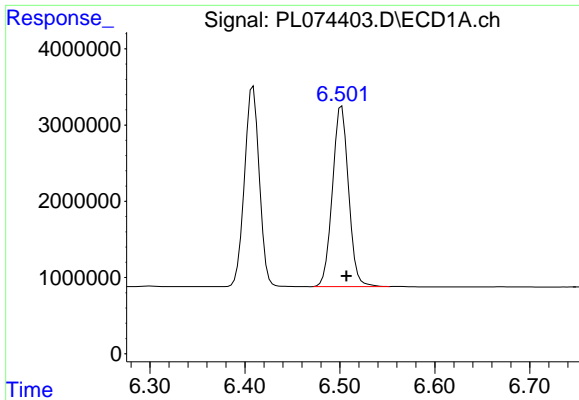
#3 gamma-BHC (Lindane)  
 R.T.: 6.442 min  
 Delta R.T.: 0.000 min  
 Response: 160769838  
 Conc: 67.92 ng/ml



#4 Heptachlor  
 R.T.: 6.177 min  
 Delta R.T.: -0.005 min  
 Response: 27065437  
 Conc: 60.08 ng/ml



#4 Heptachlor  
 R.T.: 7.101 min  
 Delta R.T.: -0.001 min  
 Response: 164662082  
 Conc: 63.13 ng/ml

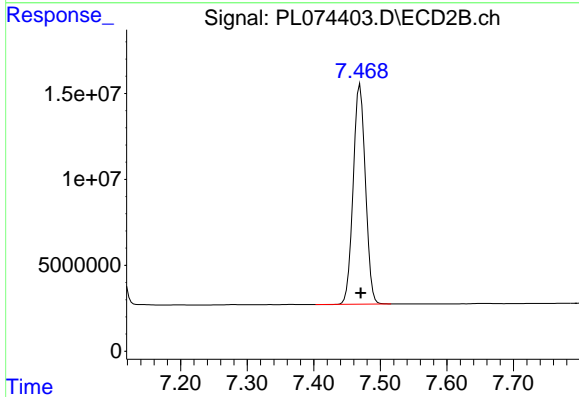


#5 Aldrin  
 R.T.: 6.502 min  
 Delta R.T.: -0.005 min  
 Response: 27881533  
 Conc: 67.18 ng/ml

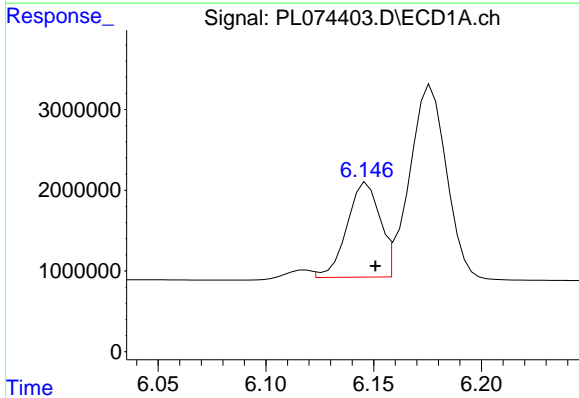
Instrument :  
 ECD\_L  
 ClientSampleId :  
 SOIL-CUTTINGSMSD

Manual Integrations  
 APPROVED

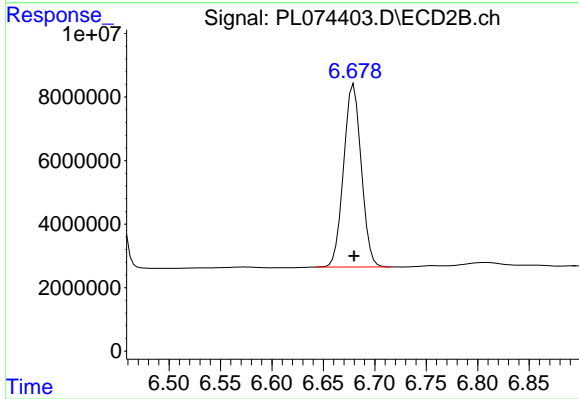
Reviewed By :Abdul Mirza 04/28/2022  
 Supervised By :mohammad ahmed 04/28/2022



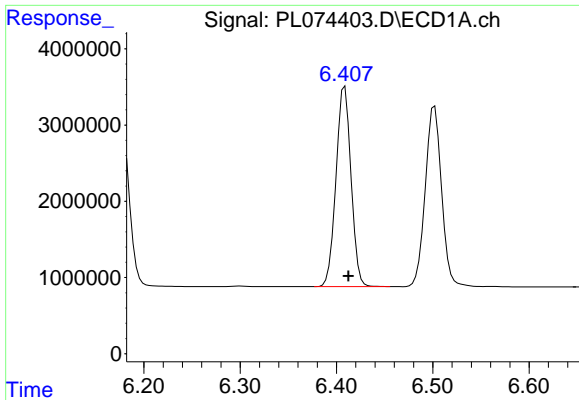
#5 Aldrin  
 R.T.: 7.469 min  
 Delta R.T.: -0.001 min  
 Response: 163398412  
 Conc: 69.57 ng/ml



#6 beta-BHC  
 R.T.: 6.146 min  
 Delta R.T.: -0.005 min  
 Response: 12000584  
 Conc: 58.73 ng/ml m



#6 beta-BHC  
 R.T.: 6.680 min  
 Delta R.T.: 0.000 min  
 Response: 68780439  
 Conc: 61.03 ng/ml



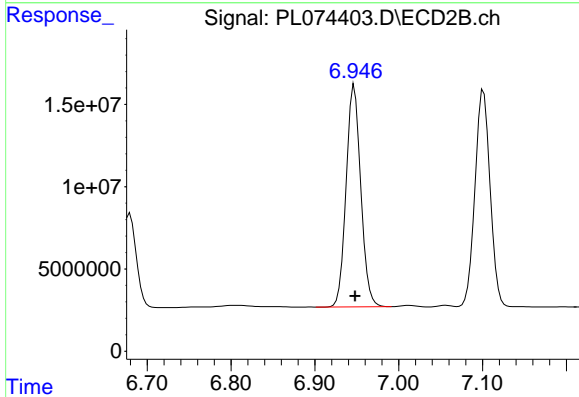
#7 delta-BHC

R.T.: 6.409 min  
 Delta R.T.: -0.004 min  
 Response: 28444782  
 Conc: 68.76 ng/ml

Instrument :  
 ECD\_L  
 ClientSampleId :  
 SOIL-CUTTINGSMSD

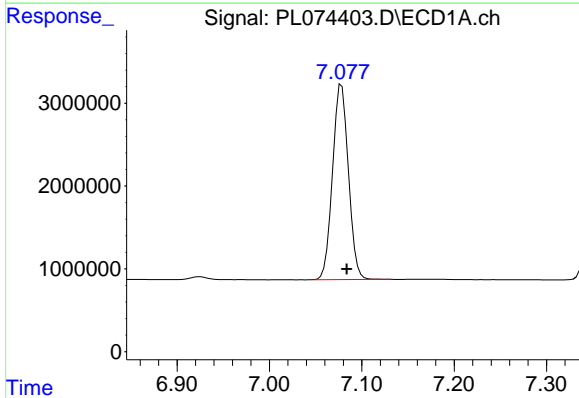
Manual Integrations  
 APPROVED

Reviewed By :Abdul Mirza 04/28/2022  
 Supervised By :mohammad ahmed 04/28/2022



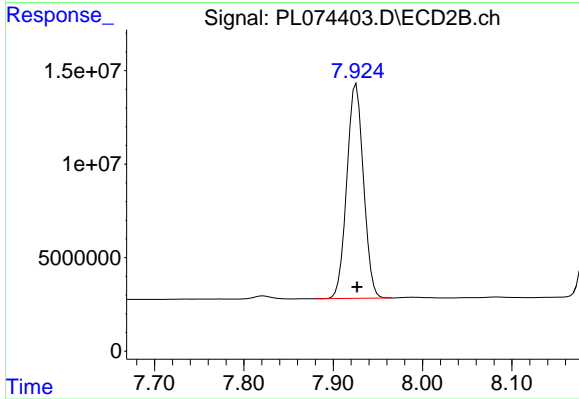
#7 delta-BHC

R.T.: 6.947 min  
 Delta R.T.: 0.000 min  
 Response: 164111709  
 Conc: 67.20 ng/ml



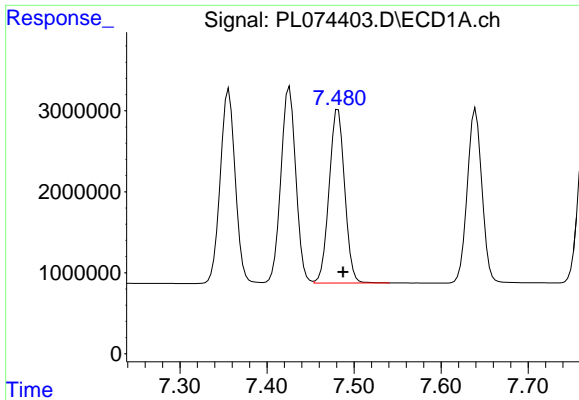
#8 Heptachlor epoxide

R.T.: 7.078 min  
 Delta R.T.: -0.006 min  
 Response: 28130107  
 Conc: 65.58 ng/ml



#8 Heptachlor epoxide

R.T.: 7.926 min  
 Delta R.T.: 0.000 min  
 Response: 148553106  
 Conc: 65.98 ng/ml



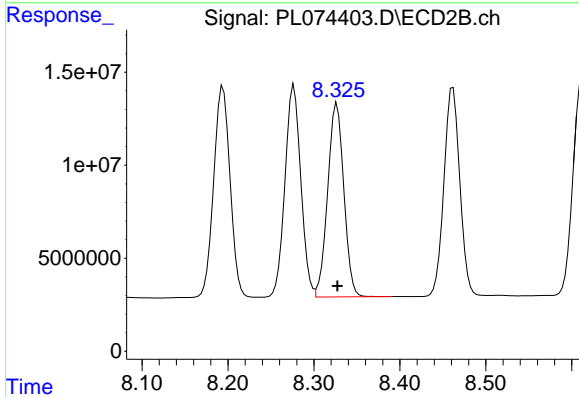
#9 Endosulfan I

R.T.: 7.482 min  
 Delta R.T.: -0.006 min  
 Response: 26606850  
 Conc: 64.88 ng/ml

Instrument : ECD\_L  
 ClientSampleId : SOIL-CUTTINGSMSD

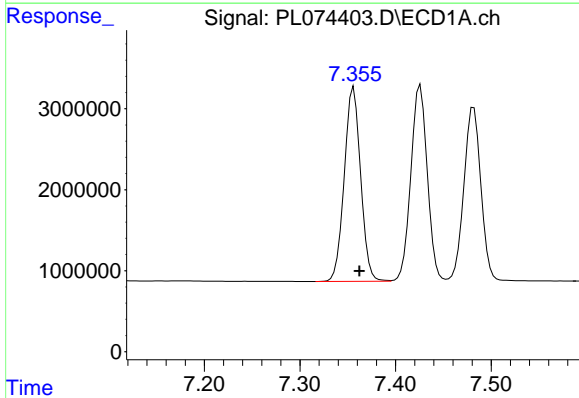
Manual Integrations  
 APPROVED

Reviewed By :Abdul Mirza 04/28/2022  
 Supervised By :mohammad ahmed 04/28/2022



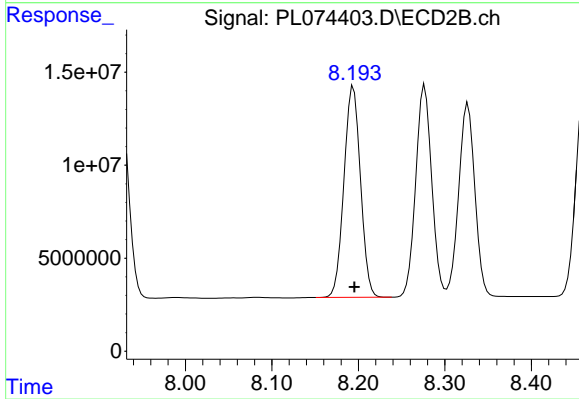
#9 Endosulfan I

R.T.: 8.327 min  
 Delta R.T.: 0.000 min  
 Response: 135576186  
 Conc: 68.87 ng/ml



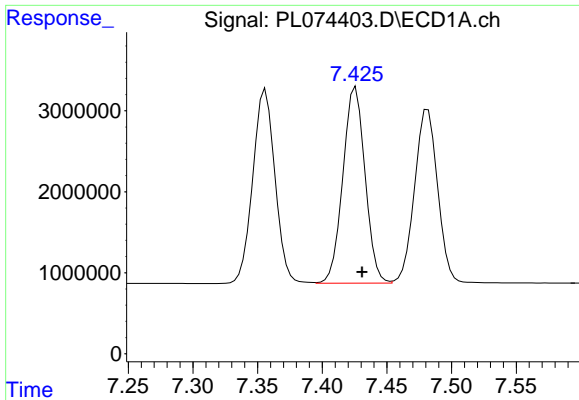
#10 gamma-Chlordane

R.T.: 7.356 min  
 Delta R.T.: -0.006 min  
 Response: 28631833  
 Conc: 65.28 ng/ml



#10 gamma-Chlordane

R.T.: 8.194 min  
 Delta R.T.: -0.001 min  
 Response: 150034831  
 Conc: 67.27 ng/ml



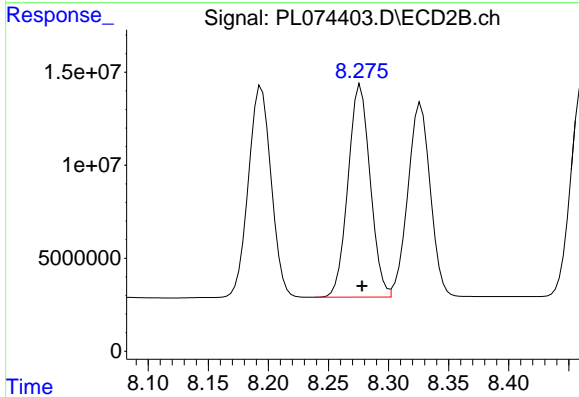
#11 alpha-Chlordane

R.T.: 7.426 min  
 Delta R.T.: -0.005 min  
 Response: 28876435  
 Conc: 65.36 ng/ml

Instrument :  
 ECD\_L  
 ClientSampleId :  
 SOIL-CUTTINGSMSD

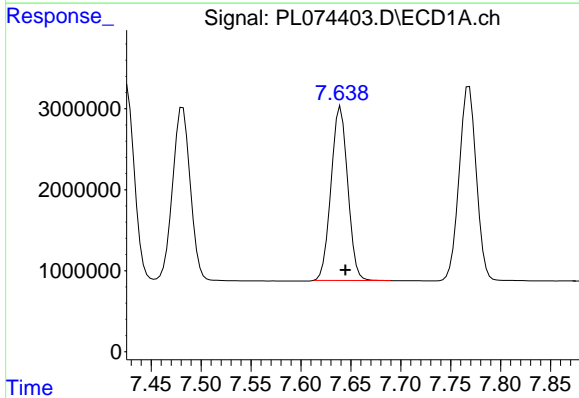
Manual Integrations  
 APPROVED

Reviewed By :Abdul Mirza 04/28/2022  
 Supervised By :mohammad ahmed 04/28/2022



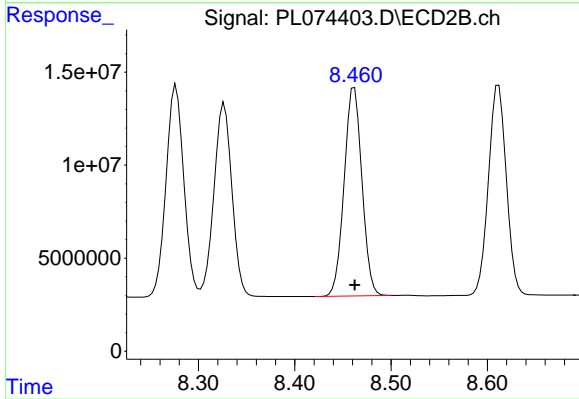
#11 alpha-Chlordane

R.T.: 8.277 min  
 Delta R.T.: -0.001 min  
 Response: 146832203  
 Conc: 68.21 ng/ml



#12 4,4'-DDE

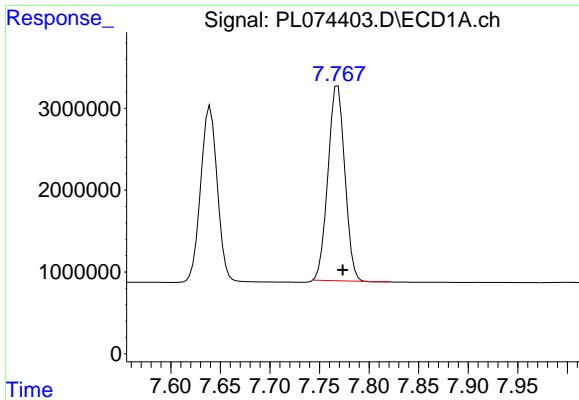
R.T.: 7.640 min  
 Delta R.T.: -0.005 min  
 Response: 24989822  
 Conc: 68.50 ng/ml



#12 4,4'-DDE

R.T.: 8.462 min  
 Delta R.T.: 0.000 min  
 Response: 143557838  
 Conc: 72.08 ng/ml





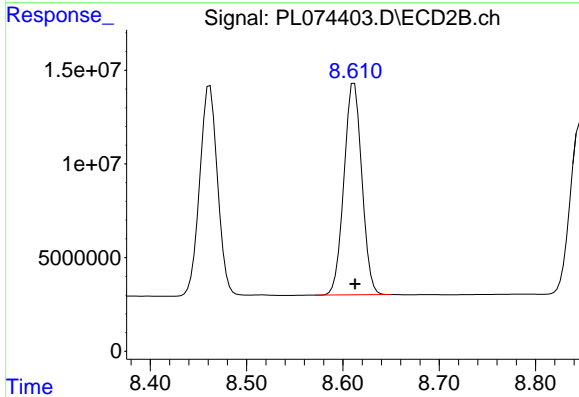
#13 Dieldrin

R.T.: 7.768 min  
 Delta R.T.: -0.005 min  
 Response: 28106475  
 Conc: 65.43 ng/ml

Instrument :  
 ECD\_L  
 ClientSampleId :  
 SOIL-CUTTINGSMSD

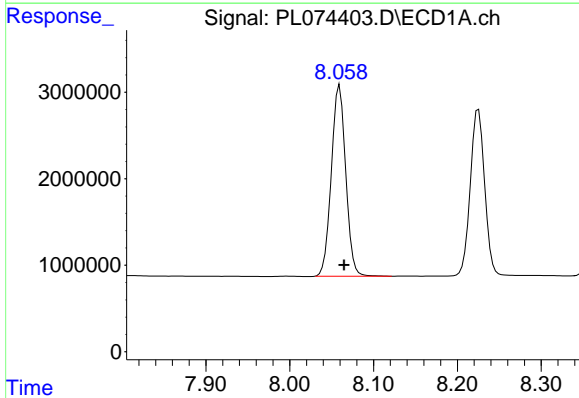
Manual Integrations  
 APPROVED

Reviewed By :Abdul Mirza 04/28/2022  
 Supervised By :mohammad ahmed 04/28/2022



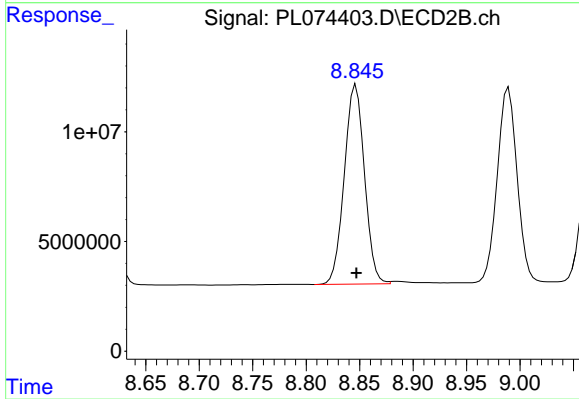
#13 Dieldrin

R.T.: 8.612 min  
 Delta R.T.: -0.001 min  
 Response: 145225839  
 Conc: 72.42 ng/ml



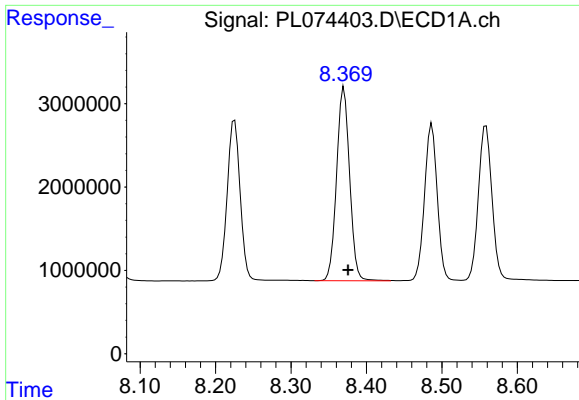
#14 Endrin

R.T.: 8.059 min  
 Delta R.T.: -0.005 min  
 Response: 26334589  
 Conc: 64.83 ng/ml



#14 Endrin

R.T.: 8.847 min  
 Delta R.T.: 0.000 min  
 Response: 119426132  
 Conc: 70.51 ng/ml



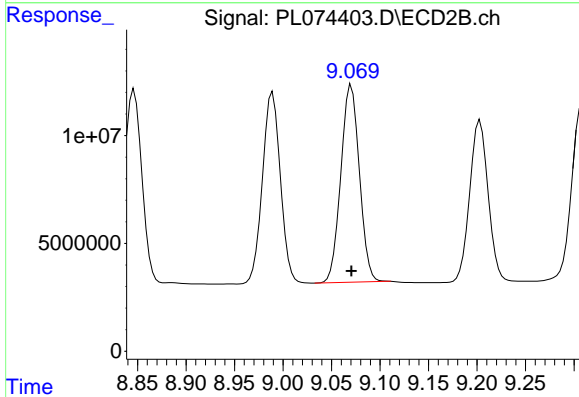
#15 Endosulfan II

R.T.: 8.370 min  
 Delta R.T.: -0.005 min  
 Response: 27898855  
 Conc: 67.69 ng/ml

Instrument :  
 ECD\_L  
 ClientSampleId :  
 SOIL-CUTTINGSMSD

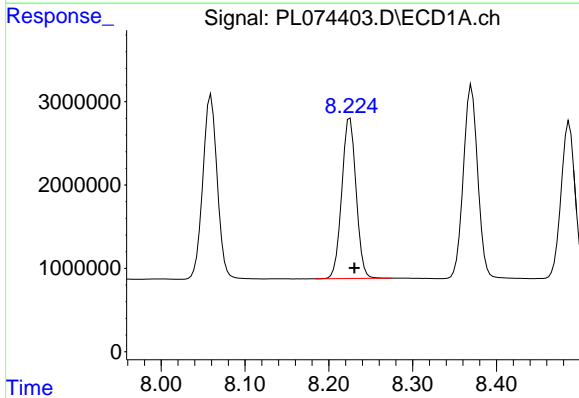
Manual Integrations  
 APPROVED

Reviewed By :Abdul Mirza 04/28/2022  
 Supervised By :mohammad ahmed 04/28/2022



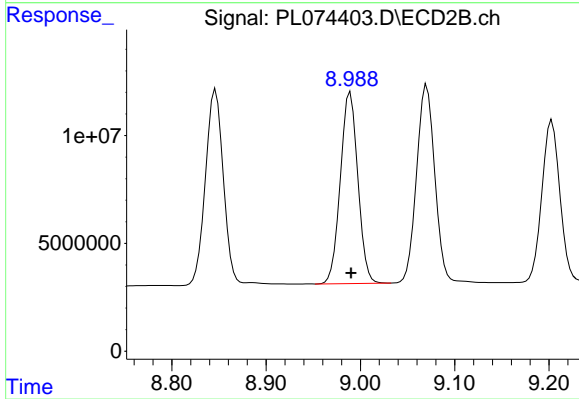
#15 Endosulfan II

R.T.: 9.070 min  
 Delta R.T.: 0.000 min  
 Response: 121811884  
 Conc: 70.12 ng/ml



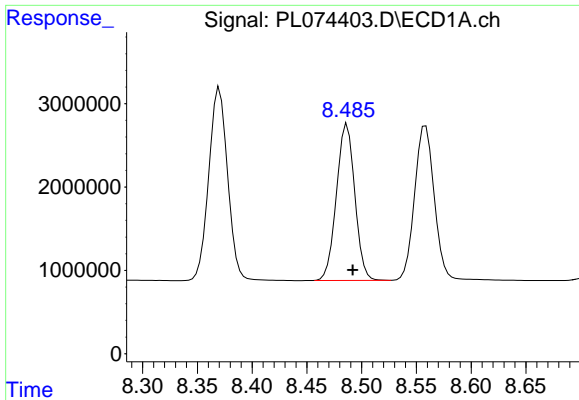
#16 4,4'-DDD

R.T.: 8.225 min  
 Delta R.T.: -0.005 min  
 Response: 22890600  
 Conc: 70.88 ng/ml



#16 4,4'-DDD

R.T.: 8.989 min  
 Delta R.T.: 0.000 min  
 Response: 114388096  
 Conc: 74.35 ng/ml



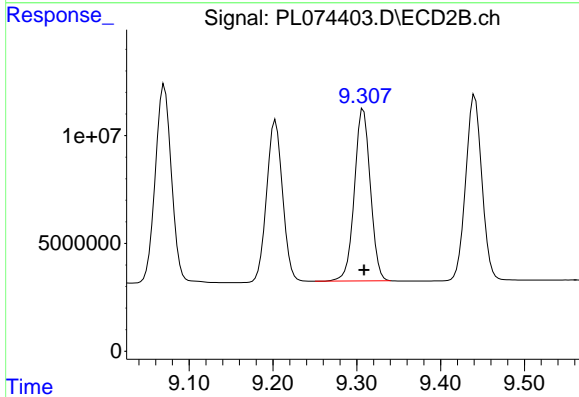
#17 4,4'-DDT

R.T.: 8.487 min  
 Delta R.T.: -0.005 min  
 Response: 21907717  
 Conc: 59.27 ng/ml

Instrument : ECD\_L  
 ClientSampleId : SOIL-CUTTINGSMSD

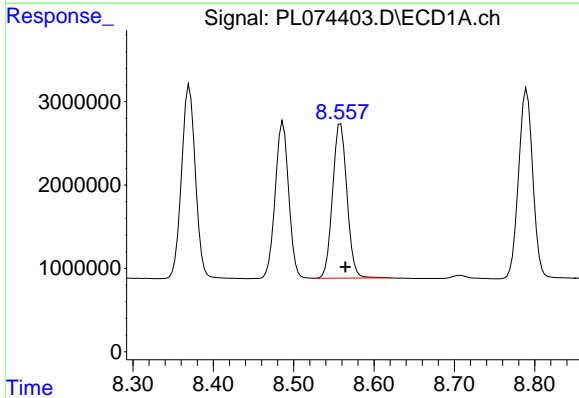
Manual Integrations  
 APPROVED

Reviewed By :Abdul Mirza 04/28/2022  
 Supervised By :mohammad ahmed 04/28/2022



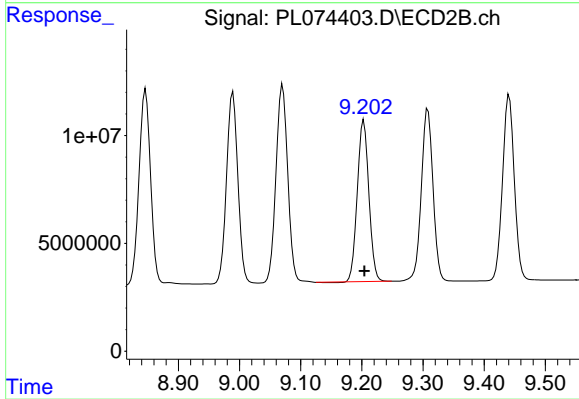
#17 4,4'-DDT

R.T.: 9.308 min  
 Delta R.T.: 0.000 min  
 Response: 105514515  
 Conc: 59.52 ng/ml



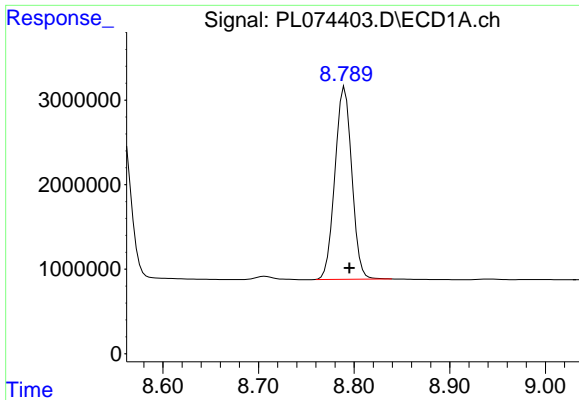
#18 Endrin aldehyde

R.T.: 8.558 min  
 Delta R.T.: -0.006 min  
 Response: 23121830  
 Conc: 71.46 ng/ml



#18 Endrin aldehyde

R.T.: 9.203 min  
 Delta R.T.: -0.001 min  
 Response: 98254266  
 Conc: 76.07 ng/ml

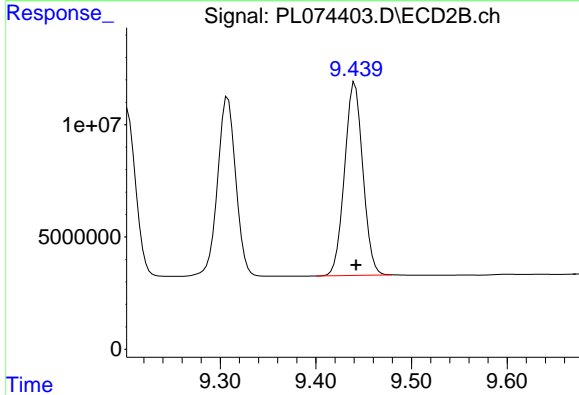


#19 Endosulfan Sulfate

R.T.: 8.790 min  
 Delta R.T.: -0.005 min  
 Response: 27901309  
 Conc: 65.34 ng/ml

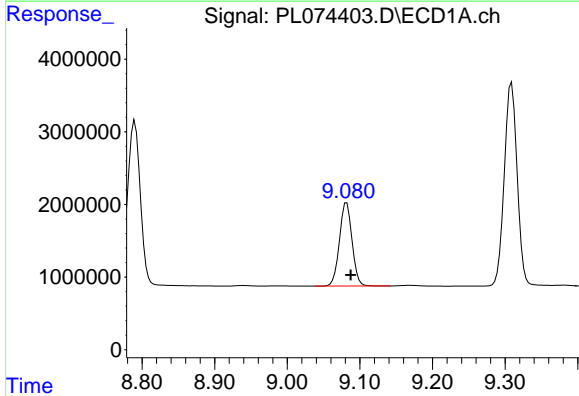
Instrument : ECD\_L  
 ClientSampleId : SOIL-CUTTINGSMSD

**Manual Integrations**  
**APPROVED**  
 Reviewed By :Abdul Mirza 04/28/2022  
 Supervised By :mohammad ahmed 04/28/2022



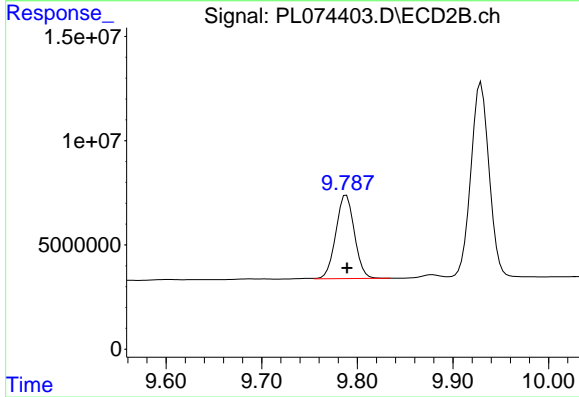
#19 Endosulfan Sulfate

R.T.: 9.441 min  
 Delta R.T.: -0.001 min  
 Response: 114822420  
 Conc: 68.99 ng/ml



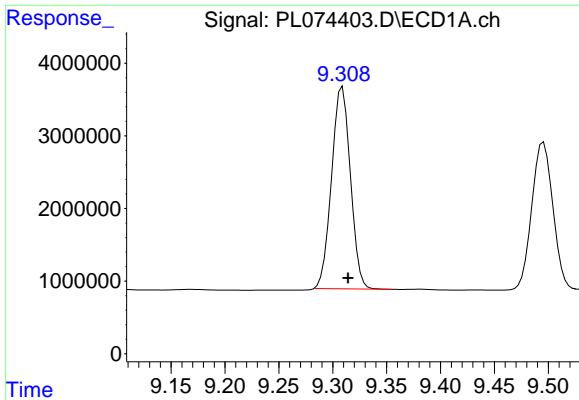
#20 Methoxychlor

R.T.: 9.082 min  
 Delta R.T.: -0.006 min  
 Response: 13852372  
 Conc: 55.80 ng/ml



#20 Methoxychlor

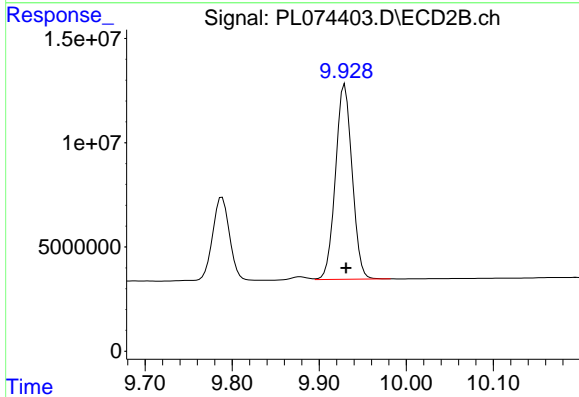
R.T.: 9.789 min  
 Delta R.T.: 0.000 min  
 Response: 54000158  
 Conc: 56.14 ng/ml



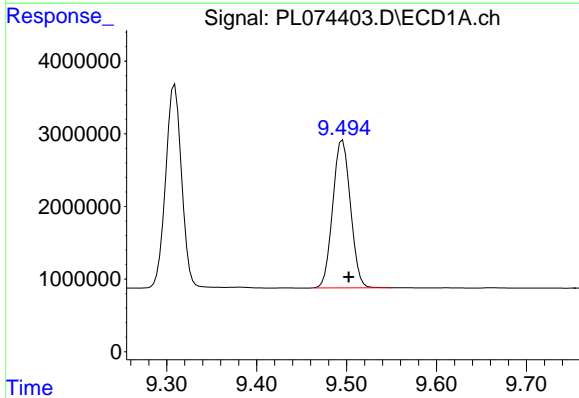
#21 Endrin ketone  
 R.T.: 9.309 min  
 Delta R.T.: -0.005 min  
 Response: 33791644  
 Conc: 69.17 ng/ml

Instrument : ECD\_L  
 ClientSampleId : SOIL-CUTTINGSMSD

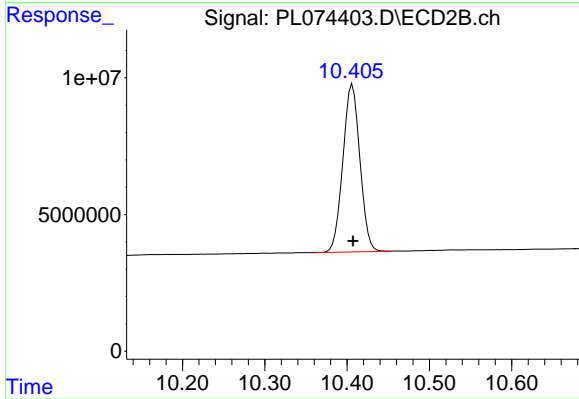
**Manual Integrations**  
**APPROVED**  
 Reviewed By :Abdul Mirza 04/28/2022  
 Supervised By :mohammad ahmed 04/28/2022



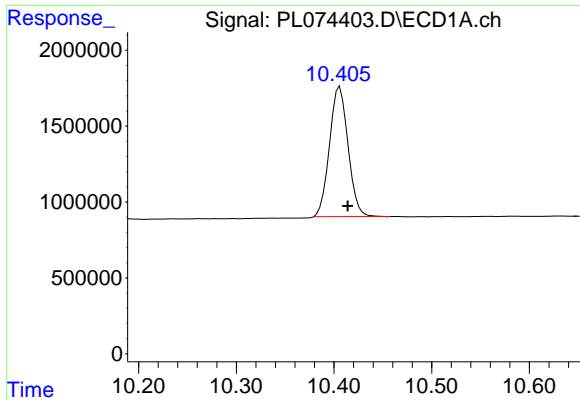
#21 Endrin ketone  
 R.T.: 9.929 min  
 Delta R.T.: -0.001 min  
 Response: 124445318  
 Conc: 71.89 ng/ml



#22 Mirex  
 R.T.: 9.496 min  
 Delta R.T.: -0.007 min  
 Response: 27820265  
 Conc: 59.65 ng/ml



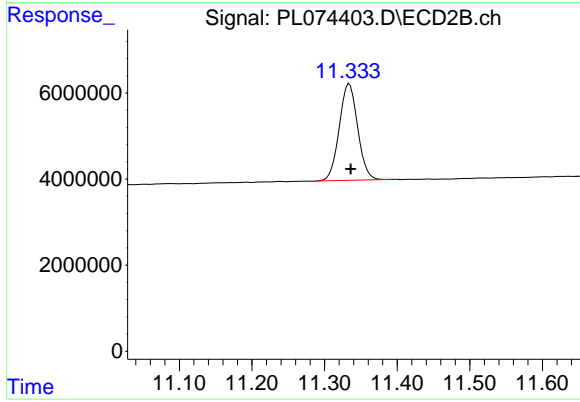
#22 Mirex  
 R.T.: 10.407 min  
 Delta R.T.: 0.000 min  
 Response: 88174137  
 Conc: 64.01 ng/ml



#28 Decachlorobiphenyl  
 R.T.: 10.406 min  
 Delta R.T.: -0.008 min  
 Response: 11308793  
 Conc: 21.75 ng/ml

Instrument : ECD\_L  
 ClientSampleId : SOIL-CUTTINGSMSD

**Manual Integrations**  
**APPROVED**  
 Reviewed By :Abdul Mirza 04/28/2022  
 Supervised By :mohammad ahmed 04/28/2022



#28 Decachlorobiphenyl  
 R.T.: 11.334 min  
 Delta R.T.: -0.002 min  
 Response: 39541873  
 Conc: 22.39 ng/ml