

Data Path : Z:\pestpcbsrv\HPCHEM1\ECD_L\Data\PL042723\
 Data File : PL082362.D
 Signal(s) : Signal #1: ECD1A.ch Signal #2: ECD2B.ch
 Acq On : 27 Apr 2023 17:12
 Operator : AR\AJ
 Sample : 02504-08
 Misc :
 ALS Vial : 16 Sample Multiplier: 1

Instrument :
 ECD_L
 ClientSampleId :
 BU-512-COMP-02

Integration File signal 1: autoint1.e
 Integration File signal 2: autoint2.e
 Quant Time: Apr 27 21:20:08 2023
 Quant Method : Z:\pestpcbsrv\HPCHEM1\ECD_L\methods\PL042023.M
 Quant Title : GC Extractables
 QLast Update : Fri Apr 21 03:12:31 2023
 Response via : Initial Calibration
 Integrator: ChemStation

Volume Inj. : 1 µl
 Signal #1 Phase : ZB-MR2 Signal #2 Phase: ZB-MR1
 Signal #1 Info : 30M x 0.32mm x0.2 Signal #2 Info : 30M x 0.32mm x0.5µm

Compound	RT#1	RT#2	Resp#1	Resp#2	ng/ml	ng/ml

System Monitoring Compounds						
1) SA Tetrachlo...	3.323	2.646	50764381	45189563	19.004	19.506
28) SA Decachlor...	8.742	7.758	37639878	43979546	19.716	19.268
Target Compounds						
12) B 4,4'-DDE	5.951	5.083	3919023	3258366	1.542	1.417
17) MA 4,4'-DDT	6.779	5.886	2947585	2625479	1.288	1.243

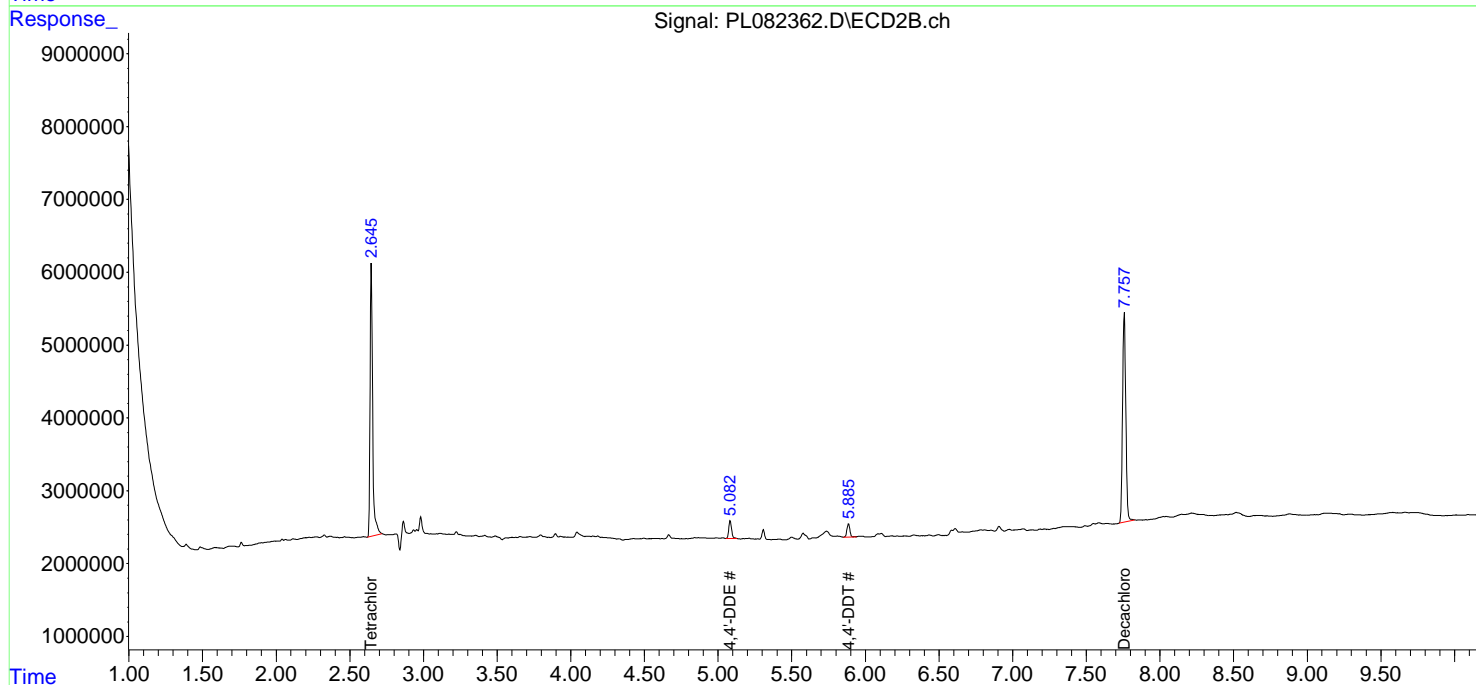
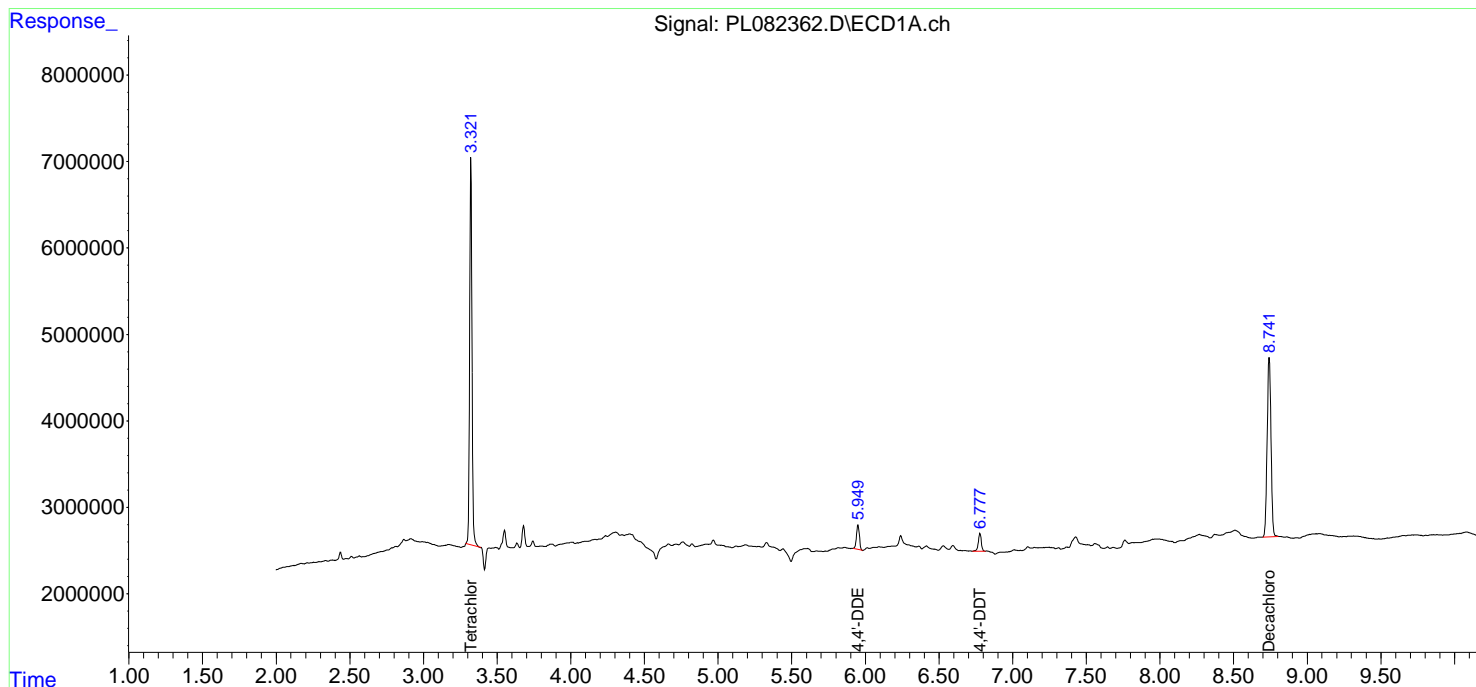
(f)=RT Delta > 1/2 Window (#)=Amounts differ by > 25% (m)=manual int.

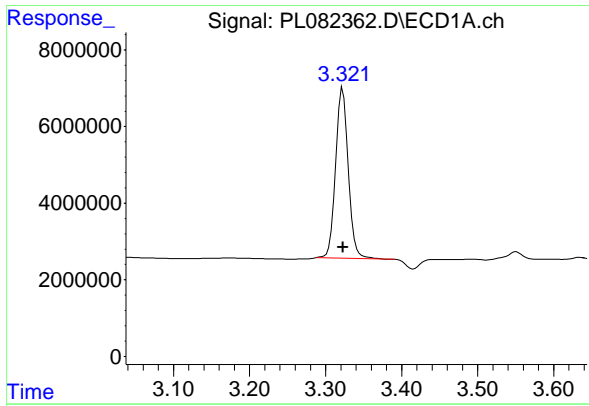
Data Path : Z:\pestpcbsrv\HPCHEM1\ECD_L\Data\PL042723\
 Data File : PL082362.D
 Signal(s) : Signal #1: ECD1A.ch Signal #2: ECD2B.ch
 Acq On : 27 Apr 2023 17:12
 Operator : AR\AJ
 Sample : 02504-08
 Misc :
 ALS Vial : 16 Sample Multiplier: 1

Instrument :
 ECD_L
 ClientSampleId :
 BU-512-COMP-02

Integration File signal 1: autoint1.e
 Integration File signal 2: autoint2.e
 Quant Time: Apr 27 21:20:08 2023
 Quant Method : Z:\pestpcbsrv\HPCHEM1\ECD_L\methods\PL042023.M
 Quant Title : GC Extractables
 QLast Update : Fri Apr 21 03:12:31 2023
 Response via : Initial Calibration
 Integrator: ChemStation

Volume Inj. : 1 µl
 Signal #1 Phase : ZB-MR2 Signal #2 Phase: ZB-MR1
 Signal #1 Info : 30M x 0.32mm x0.2 Signal #2 Info : 30M x 0.32mm x0.5µm

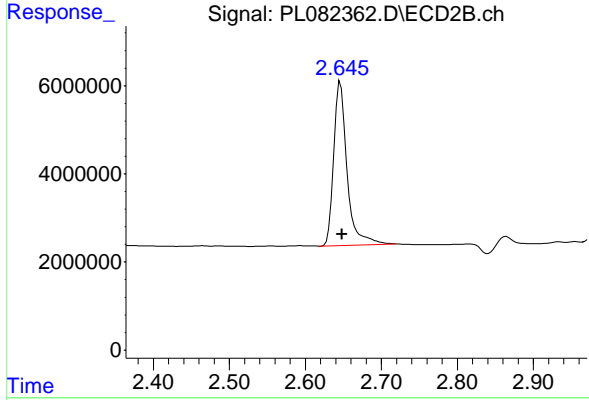




#1 Tetrachloro-m-xylene

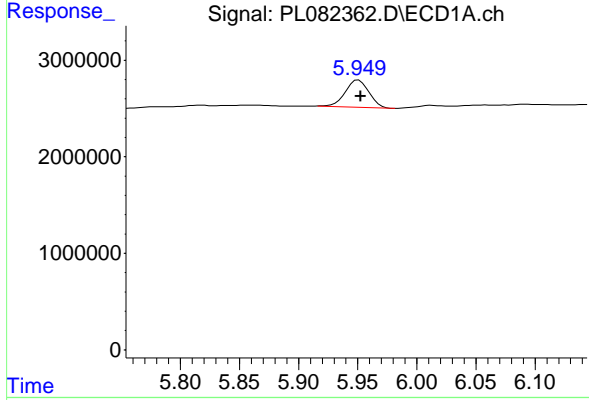
R.T.: 3.323 min
 Delta R.T.: 0.000 min
 Response: 50764381
 Conc: 19.00 ng/ml

Instrument :
 ECD_L
 ClientSampleId :
 BU-512-COMP-02



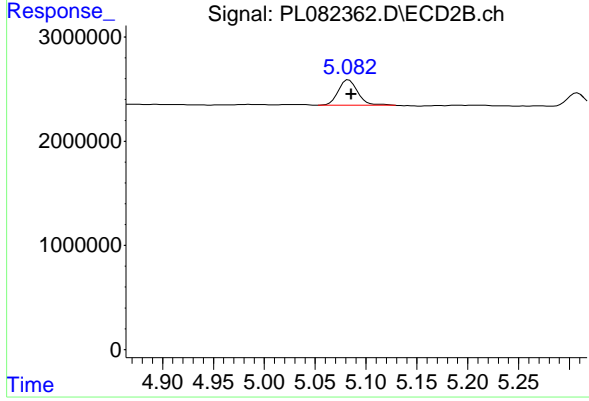
#1 Tetrachloro-m-xylene

R.T.: 2.646 min
 Delta R.T.: -0.002 min
 Response: 45189563
 Conc: 19.51 ng/ml



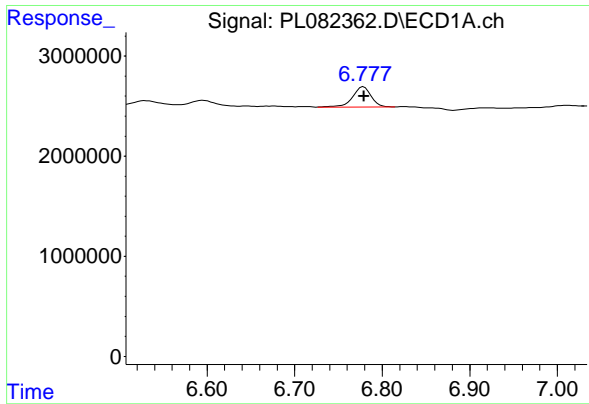
#12 4,4'-DDE

R.T.: 5.951 min
 Delta R.T.: -0.002 min
 Response: 3919023
 Conc: 1.54 ng/ml



#12 4,4'-DDE

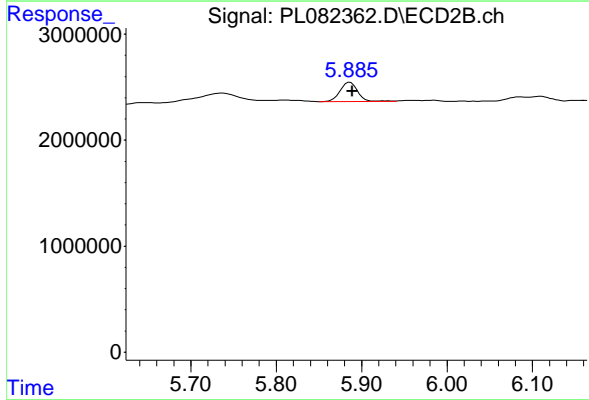
R.T.: 5.083 min
 Delta R.T.: -0.003 min
 Response: 3258366
 Conc: 1.42 ng/ml



#17 4,4' -DDT

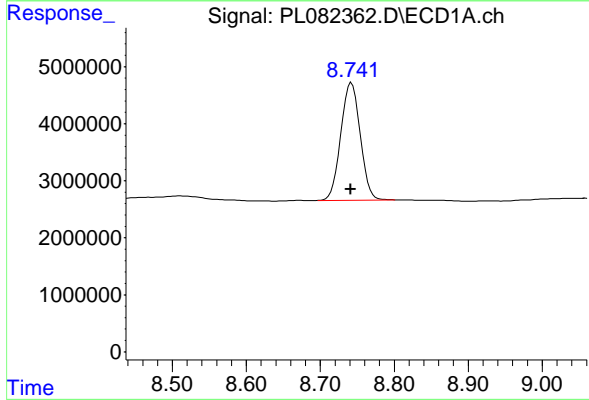
R.T.: 6.779 min
 Delta R.T.: 0.000 min
 Response: 2947585
 Conc: 1.29 ng/ml

Instrument :
 ECD_L
 ClientSampleId :
 BU-512-COMP-02



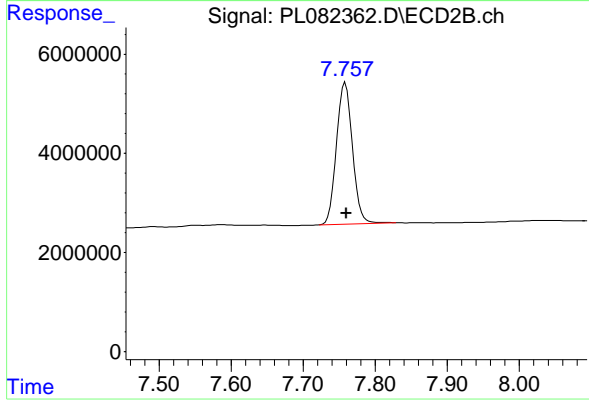
#17 4,4' -DDT

R.T.: 5.886 min
 Delta R.T.: -0.003 min
 Response: 2625479
 Conc: 1.24 ng/ml



#28 Decachlorobiphenyl

R.T.: 8.742 min
 Delta R.T.: 0.001 min
 Response: 37639878
 Conc: 19.72 ng/ml



#28 Decachlorobiphenyl

R.T.: 7.758 min
 Delta R.T.: -0.002 min
 Response: 43979546
 Conc: 19.27 ng/ml