

Data Path : Z:\pestpcbsrv\HPCHEM1\ECD_L\Data\PL042821\
 Data File : PL066537.D
 Signal(s) : Signal #1: ECD1A.ch Signal #2: ECD2B.ch
 Acq On : 28 Apr 2021 15:44
 Operator : AR\AJ
 Sample : M2190-01
 Misc :
 ALS Vial : 19 Sample Multiplier: 1

Instrument :
 ECD_L
 ClientSampleId :

Integration File signal 1: autoint1.e
 Integration File signal 2: autoint2.e
 Quant Time: Apr 29 04:03:13 2021
 Quant Method : Z:\pestpcbsrv\HPCHEM1\ECD_L\methods\PL042621.M
 Quant Title : GC Extractables
 QLast Update : Wed Apr 28 08:49:49 2021
 Response via : Initial Calibration
 Integrator: ChemStation

Volume Inj. : 1 µl
 Signal #1 Phase : ZB-MR2 Signal #2 Phase: ZB-MR1
 Signal #1 Info : 30M x 0.32mm x0.2 Signal #2 Info : 30M x 0.32mm x0.5µm

Compound	RT#1	RT#2	Resp#1	Resp#2	ng/ml	ng/ml

System Monitoring Compounds						
1) SA Tetrachlo...	3.428	4.153	52094484	50309275	13.825	14.325
28) SA Decachlor...	8.163	9.352	50647764	42473561	13.209	13.730
Target Compounds						
2) A alpha-BHC	0.000	4.580f	0	1563677	N.D.	0.304 #
4) MA Heptachlor	4.440	0.000	1554232	0	0.278	N.D. #
5) MB Aldrin	0.000	5.676	0	967512	N.D.	0.207 #
7) B delta-BHC	0.000	5.279f	0	1546568	N.D.	0.349 #
9) A Endosulfan I	5.468	0.000	3546738	0	0.769	N.D. #
10) B gamma-Chl...	5.373f	6.312	13400969	3611251	2.630	0.868 #
11) B alpha-Chl...	5.407	6.383	8552773	6386084	1.737	1.539
12) B 4,4'-DDE	5.574	6.539	2000434	5015709	0.438	1.322 #
17) MA 4,4'-DDT	6.323	7.339	2373688	1036445	0.609	0.320 #
23) Chlordane-1	4.292	0.000	6555645	0	38.783	N.D. #
24) Chlordane-2	4.782	5.654	3154349	1836383	18.361	11.307 #
25) Chlordane-3	5.373f	6.312	13400969	3611251	26.929	6.443 #
26) Chlordane-4	5.407	6.383	8552773	6386084	20.267	9.512 #

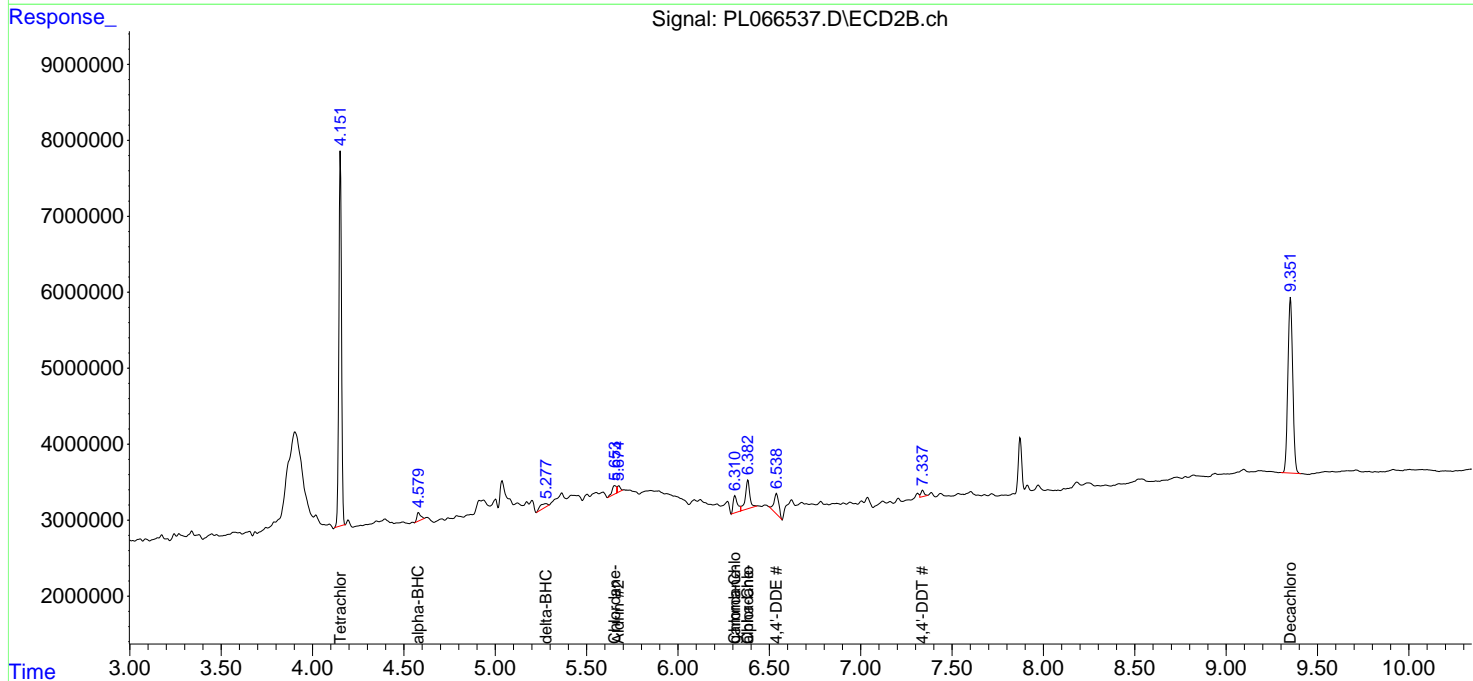
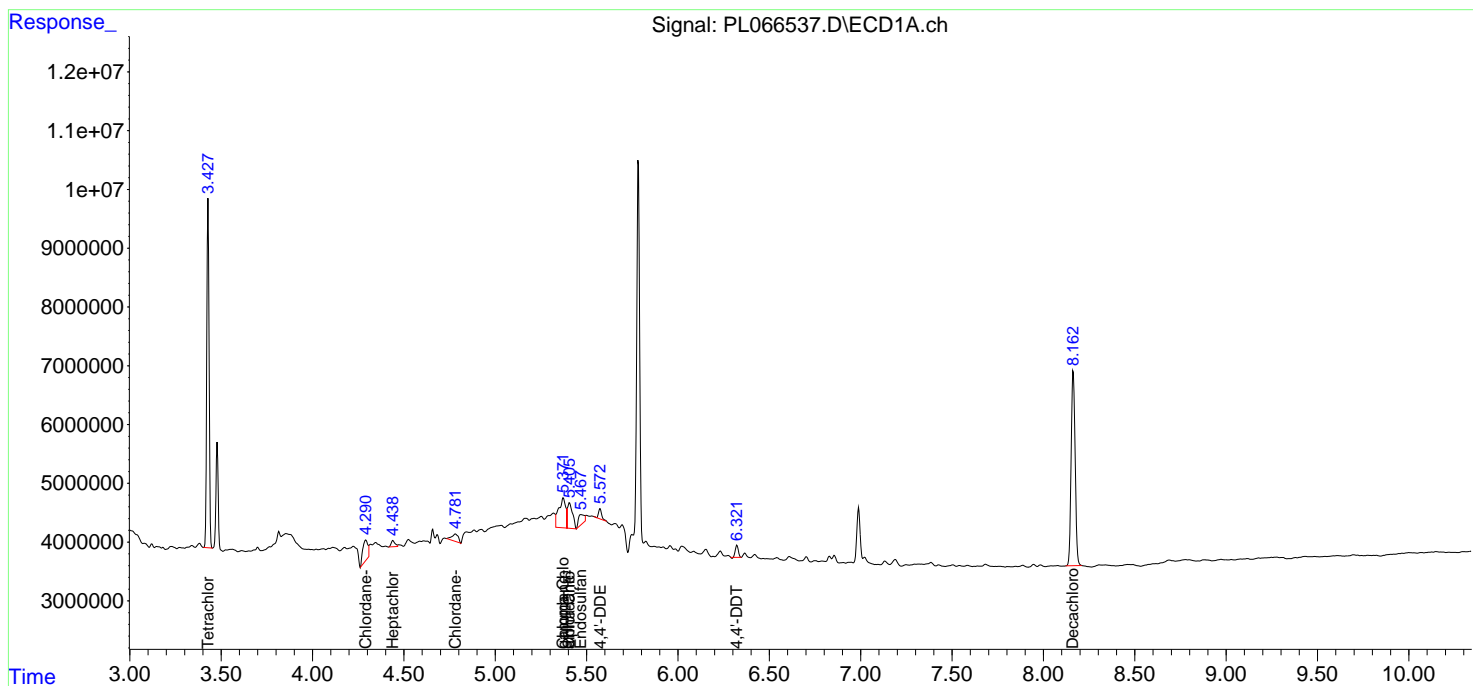
(f)=RT Delta > 1/2 Window (#)=Amounts differ by > 25% (m)=manual int.

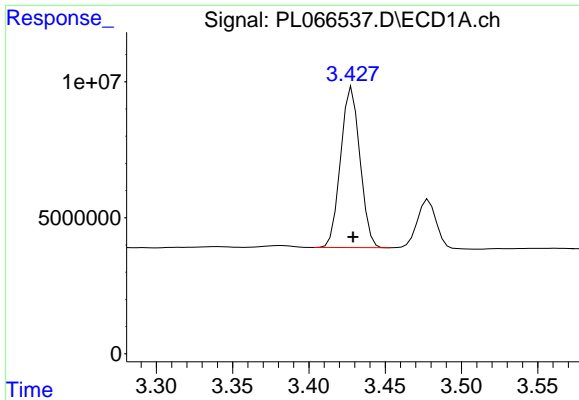
Data Path : Z:\pestpcbsrv\HPCHEM1\ECD_L\Data\PL042821\
 Data File : PL066537.D
 Signal(s) : Signal #1: ECD1A.ch Signal #2: ECD2B.ch
 Acq On : 28 Apr 2021 15:44
 Operator : AR\AJ
 Sample : M2190-01
 Misc :
 ALS Vial : 19 Sample Multiplier: 1

Instrument :
 ECD_L
 ClientSampled :

Integration File signal 1: autoint1.e
 Integration File signal 2: autoint2.e
 Quant Time: Apr 29 04:03:13 2021
 Quant Method : Z:\pestpcbsrv\HPCHEM1\ECD_L\methods\PL042621.M
 Quant Title : GC Extractables
 QLast Update : Wed Apr 28 08:49:49 2021
 Response via : Initial Calibration
 Integrator: ChemStation

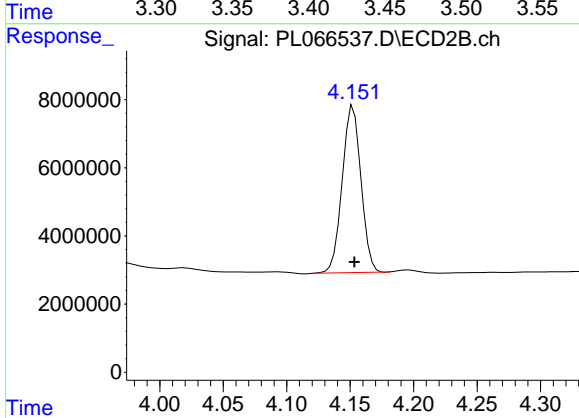
Volume Inj. : 1 µl
 Signal #1 Phase : ZB-MR2 Signal #2 Phase: ZB-MR1
 Signal #1 Info : 30M x 0.32mm x0.2 Signal #2 Info : 30M x 0.32mm x0.5µm



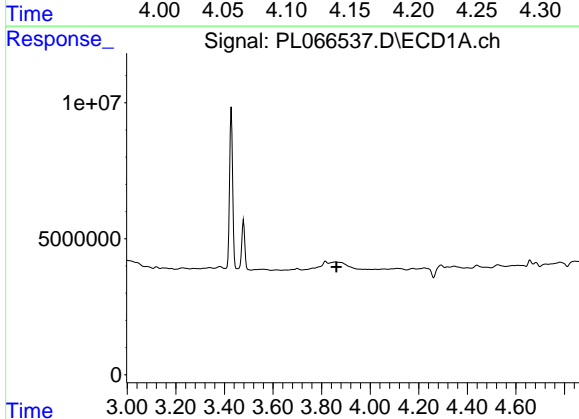


#1 Tetrachloro-m-xylene
 R.T.: 3.428 min
 Delta R.T.: 0.000 min
 Response: 52094484
 Conc: 13.83 ng/ml

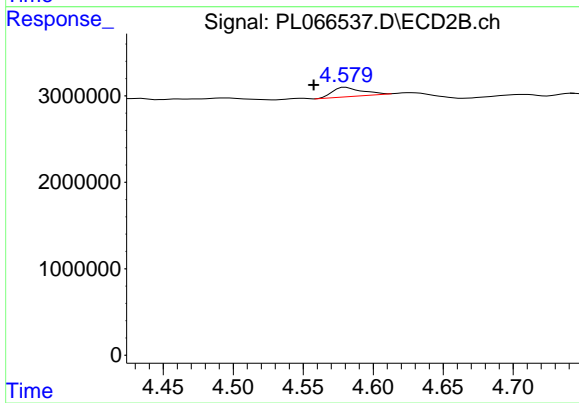
Instrument :
 ECD_L
 ClientSampled :



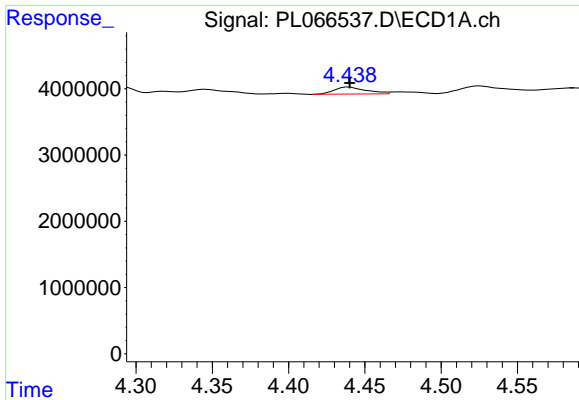
#1 Tetrachloro-m-xylene
 R.T.: 4.153 min
 Delta R.T.: 0.000 min
 Response: 50309275
 Conc: 14.32 ng/ml



#2 alpha-BHC
 R.T.: 0.000 min
 Exp R.T. : 3.862 min
 Response: 0
 Conc: N.D.

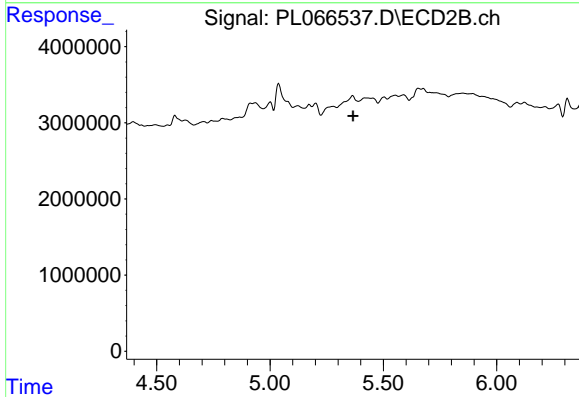


#2 alpha-BHC
 R.T.: 4.580 min
 Delta R.T.: 0.023 min
 Response: 1563677
 Conc: 0.30 ng/ml

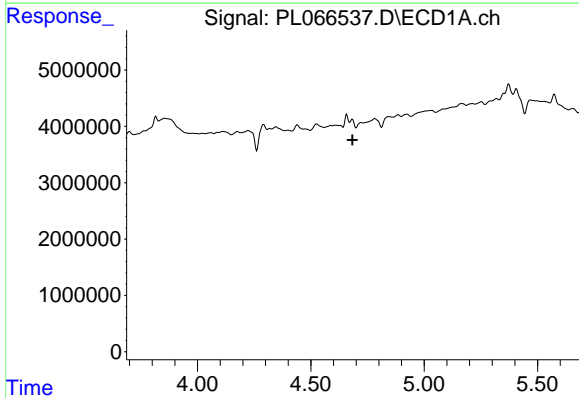


#4 Heptachlor
 R.T.: 4.440 min
 Delta R.T.: 0.000 min
 Response: 1554232
 Conc: 0.28 ng/ml

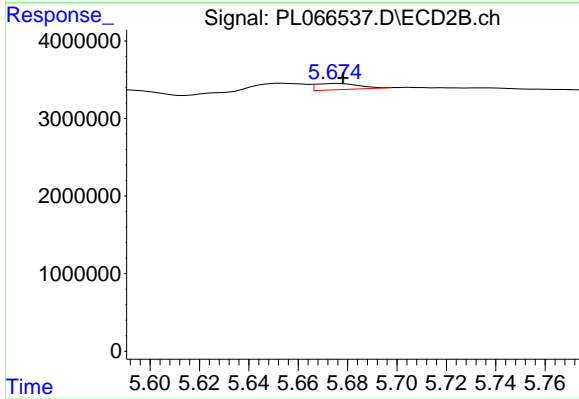
Instrument :
 ECD_L
 ClientSampled :



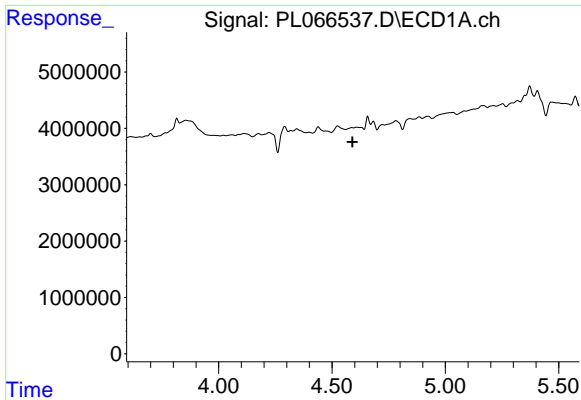
#4 Heptachlor
 R.T.: 0.000 min
 Exp R.T. : 5.367 min
 Response: 0
 Conc: N.D.



#5 Aldrin
 R.T.: 0.000 min
 Exp R.T. : 4.684 min
 Response: 0
 Conc: N.D.

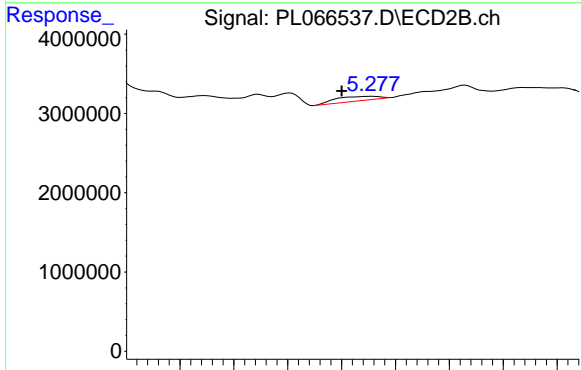


#5 Aldrin
 R.T.: 5.676 min
 Delta R.T.: -0.002 min
 Response: 967512
 Conc: 0.21 ng/ml

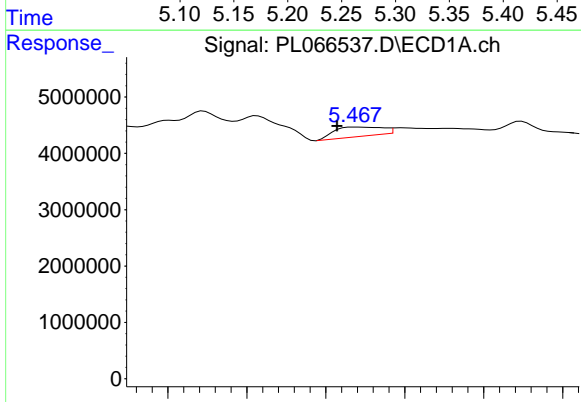


#7 delta-BHC
 R.T.: 0.000 min
 Exp R.T.: 4.591 min
 Response: 0
 Conc: N.D.

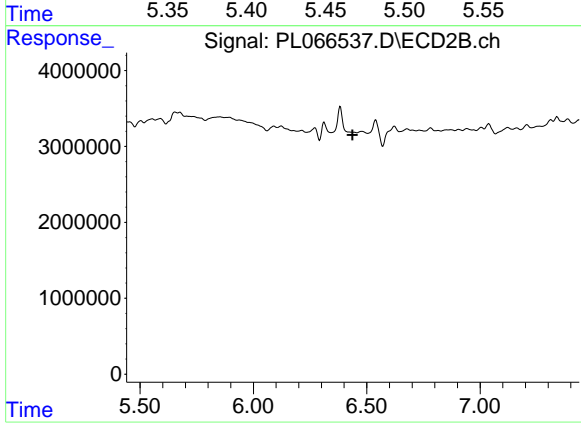
Instrument :
 ECD_L
 ClientSampleId :



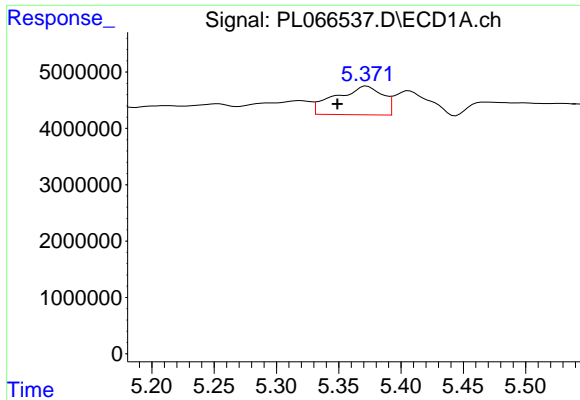
#7 delta-BHC
 R.T.: 5.279 min
 Delta R.T.: 0.029 min
 Response: 1546568
 Conc: 0.35 ng/ml



#9 Endosulfan I
 R.T.: 5.468 min
 Delta R.T.: 0.011 min
 Response: 3546738
 Conc: 0.77 ng/ml



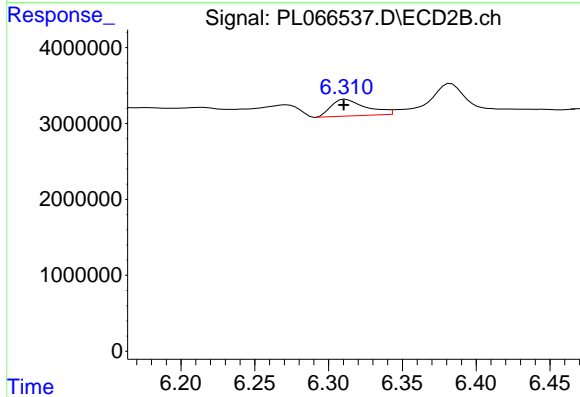
#9 Endosulfan I
 R.T.: 0.000 min
 Exp R.T.: 6.438 min
 Response: 0
 Conc: N.D.



#10 gamma-Chlordane

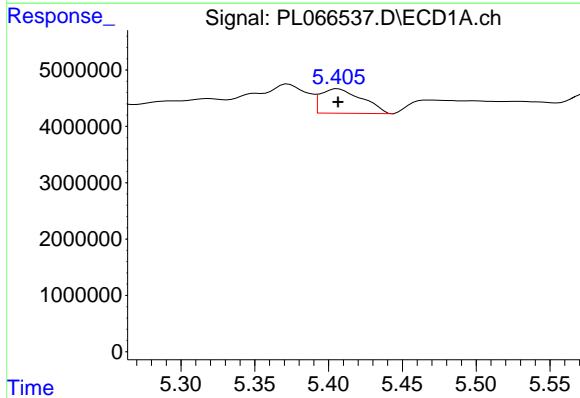
R.T.: 5.373 min
 Delta R.T.: 0.024 min
 Response: 13400969
 Conc: 2.63 ng/ml

Instrument :
 ECD_L
 ClientSampleId :



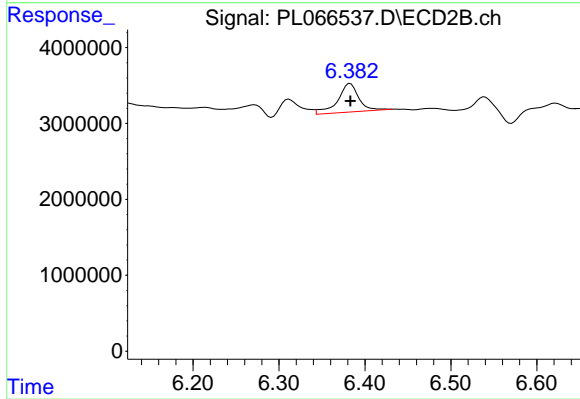
#10 gamma-Chlordane

R.T.: 6.312 min
 Delta R.T.: 0.002 min
 Response: 3611251
 Conc: 0.87 ng/ml



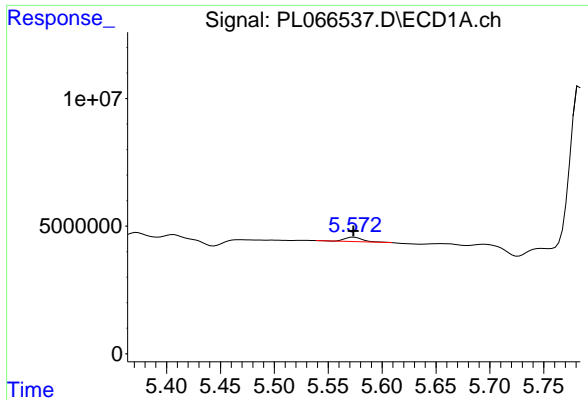
#11 alpha-Chlordane

R.T.: 5.407 min
 Delta R.T.: 0.000 min
 Response: 8552773
 Conc: 1.74 ng/ml



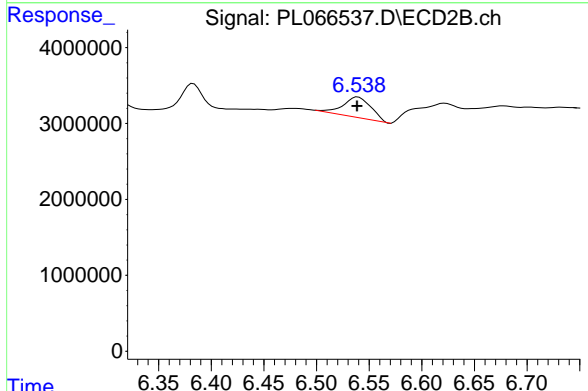
#11 alpha-Chlordane

R.T.: 6.383 min
 Delta R.T.: 0.000 min
 Response: 6386084
 Conc: 1.54 ng/ml

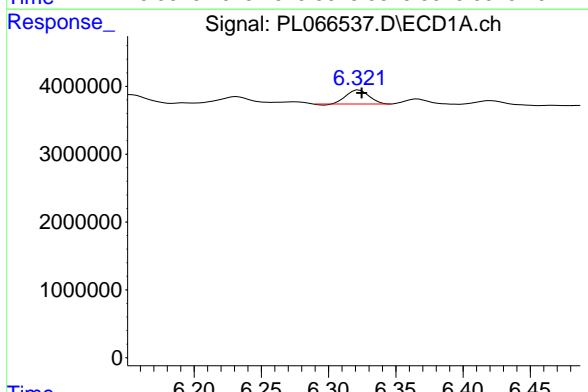


#12 4,4'-DDE
 R.T.: 5.574 min
 Delta R.T.: 0.000 min
 Response: 2000434
 Conc: 0.44 ng/ml

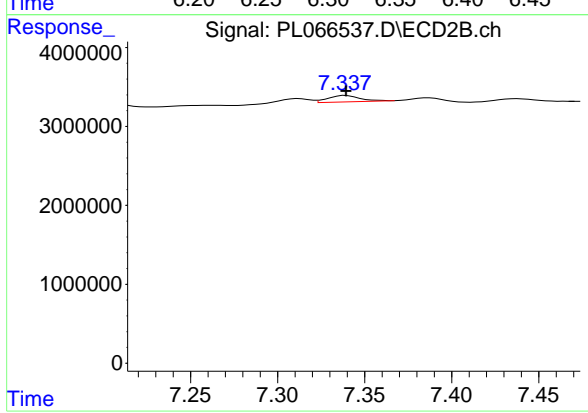
Instrument :
 ECD_L
 ClientSampleId :



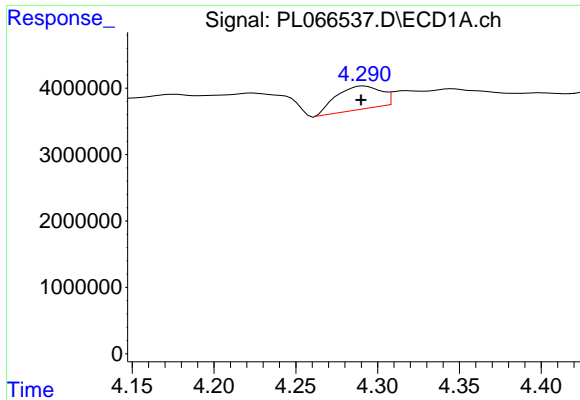
#12 4,4'-DDE
 R.T.: 6.539 min
 Delta R.T.: 0.000 min
 Response: 5015709
 Conc: 1.32 ng/ml



#17 4,4'-DDT
 R.T.: 6.323 min
 Delta R.T.: -0.002 min
 Response: 2373688
 Conc: 0.61 ng/ml

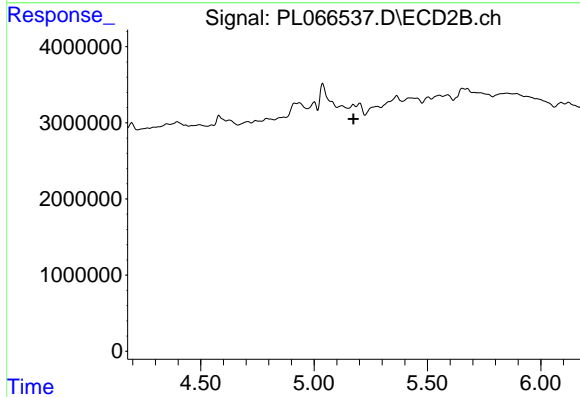


#17 4,4'-DDT
 R.T.: 7.339 min
 Delta R.T.: 0.000 min
 Response: 1036445
 Conc: 0.32 ng/ml

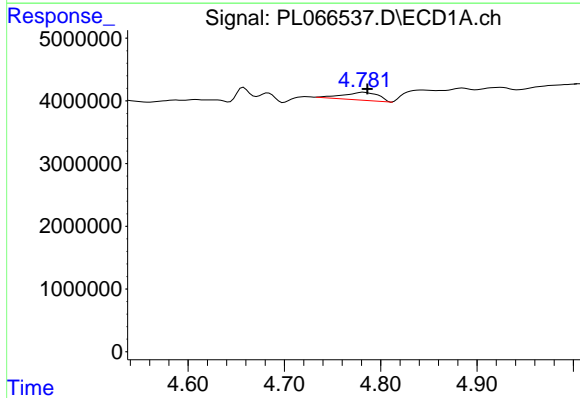


#23 Chlordane-1
 R.T.: 4.292 min
 Delta R.T.: 0.002 min
 Response: 6555645
 Conc: 38.78 ng/ml

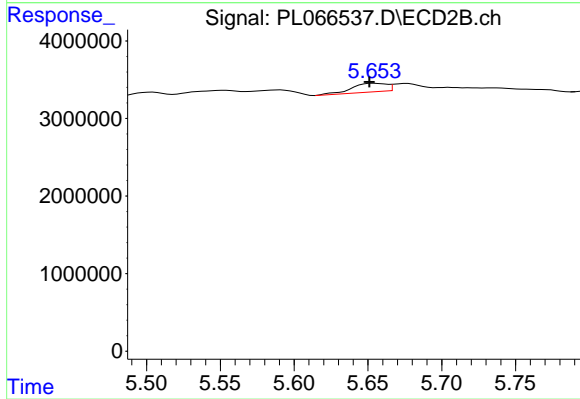
Instrument :
 ECD_L
 ClientSampleId :



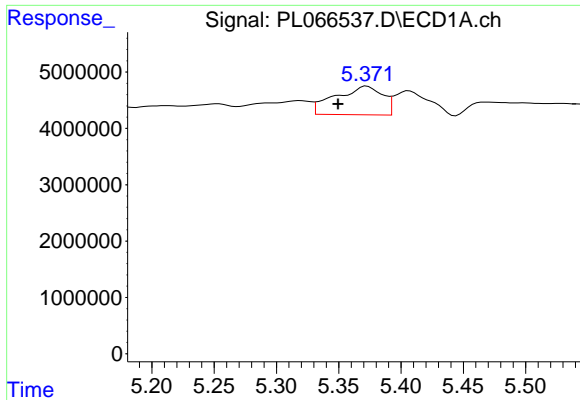
#23 Chlordane-1
 R.T.: 0.000 min
 Exp R.T. : 5.174 min
 Response: 0
 Conc: N.D.



#24 Chlordane-2
 R.T.: 4.782 min
 Delta R.T.: -0.004 min
 Response: 3154349
 Conc: 18.36 ng/ml

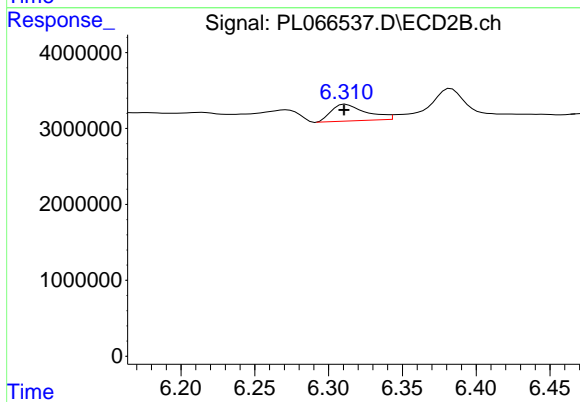


#24 Chlordane-2
 R.T.: 5.654 min
 Delta R.T.: 0.003 min
 Response: 1836383
 Conc: 11.31 ng/ml

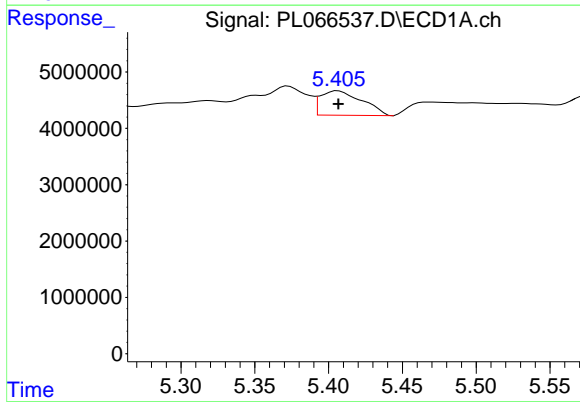


#25 Chlordane-3
 R.T.: 5.373 min
 Delta R.T.: 0.023 min
 Response: 13400969
 Conc: 26.93 ng/ml

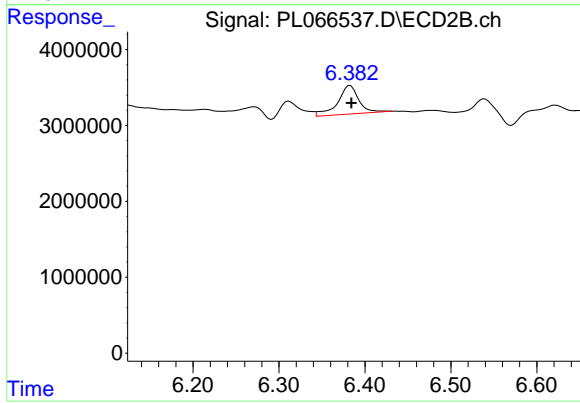
Instrument :
 ECD_L
 ClientSampleId :



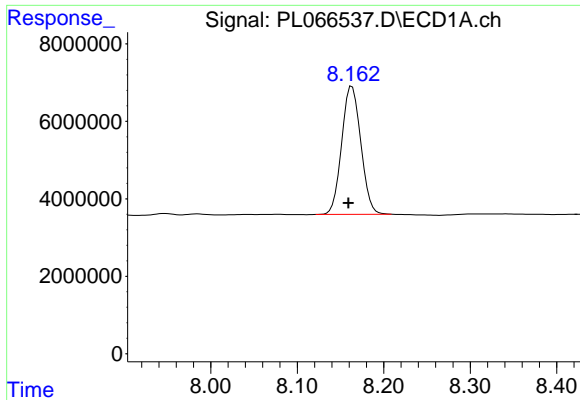
#25 Chlordane-3
 R.T.: 6.312 min
 Delta R.T.: 0.001 min
 Response: 3611251
 Conc: 6.44 ng/ml



#26 Chlordane-4
 R.T.: 5.407 min
 Delta R.T.: 0.000 min
 Response: 8552773
 Conc: 20.27 ng/ml



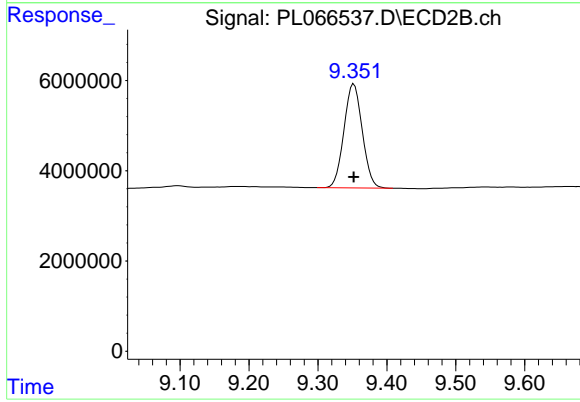
#26 Chlordane-4
 R.T.: 6.383 min
 Delta R.T.: -0.001 min
 Response: 6386084
 Conc: 9.51 ng/ml



#28 Decachlorobiphenyl

R.T.: 8.163 min
Delta R.T.: 0.004 min
Response: 50647764
Conc: 13.21 ng/ml

Instrument :
ECD_L
ClientSampleId :



#28 Decachlorobiphenyl

R.T.: 9.352 min
Delta R.T.: 0.000 min
Response: 42473561
Conc: 13.73 ng/ml