

Data Path : Z:\pestpcbsrv\HPCHEM1\ECD_L\Data\PL042822\
 Data File : PL074438.D
 Signal(s) : Signal #1: ECD1A.ch Signal #2: ECD2B.ch
 Acq On : 29 Apr 2022 05:11
 Operator : AR\AJ
 Sample : N2600-04MSD
 Misc :
 ALS Vial : 17 Sample Multiplier: 1

Instrument :
 ECD_L
 ClientSampleId :

Integration File signal 1: autoint1.e
 Integration File signal 2: autoint2.e
 Quant Time: Apr 29 05:58:08 2022
 Quant Method : Z:\pestpcbsrv\HPCHEM1\ECD_L\methods\PL040822.M
 Quant Title : GC Extractables
 QLast Update : Thu Apr 14 09:29:23 2022
 Response via : Initial Calibration
 Integrator: ChemStation

Volume Inj. : 1 µl
 Signal #1 Phase : ZB-MR2 Signal #2 Phase: ZB-MR1
 Signal #1 Info : 30M x 0.32mm x0.2 Signal #2 Info : 30M x 0.32mm x0.5µm

	Compound	RT#1	RT#2	Resp#1	Resp#2	ng/ml	ng/ml

System Monitoring Compounds							
1)	SA Tetrachlo...	4.637	5.488	6033810	31337418	18.674	17.576
28)	SA Decachlor...	10.406	11.332	9968553	34166289	19.169	19.343
Target Compounds							
2)	A alpha-BHC	5.345	6.052	22616272	131.4E6	53.892	52.201
3)	MA gamma-BHC...	5.768	6.441	22264976	122.8E6	53.088	51.893
4)	MA Heptachlor	6.178	7.100	22982942	123.6E6	51.021	47.397
5)	MB Aldrin	6.503	7.469	23103107	126.2E6	55.664	53.743
6)	B beta-BHC	6.148	6.679	10777003	54304985	52.744	48.185
7)	B delta-BHC	6.409	6.946	21488446	117.4E6	51.946	48.059
8)	Heptachlo...	7.079	7.925	23206797	114.7E6	54.103	50.944
9)	A Endosulfan I	7.482	8.326	22169560	104.4E6	54.056	53.037
10)	B gamma-Chl...	7.357	8.193	23808752	116.5E6	54.285	52.232
11)	B alpha-Chl...	7.426	8.276	23980349	113.4E6	54.282	52.700
12)	B 4,4'-DDE	7.640	8.461	20331286	110.2E6	55.730	55.321
13)	MA Dieldrin	7.769	8.611	23413986	111.0E6	54.506	55.333
14)	MA Endrin	8.060	8.845	21151096	89146607	52.066	52.635
15)	B Endosulfa...	8.370	9.070	23046235	93376775	55.916	53.750
16)	A 4,4'-DDD	8.226	8.989	19035147	89952519	58.946	58.464
17)	MA 4,4'-DDT	8.487	9.307	16219313	73895964	43.879	41.686
18)	B Endrin al...	8.558	9.202	18398179	73530492	56.863	56.929
19)	B Endosulfa...	8.790	9.440	22903494	88265962	53.635	53.034
20)	A Methoxychlor	9.082	9.787	10874096	40117252	43.800	41.709
21)	B Endrin ke...	9.308	9.928	27457570	97924140	56.202	56.573
22)	Mirex	9.496	10.404	23680455	69796902	50.772	50.673
24)	Chlordane-2	0.000	7.469f	0	126.2E6	N.D.	1527.405 #
25)	Chlordane-3	7.357	8.193	23808752	116.5E6	550.339	344.355 #
26)	Chlordane-4	7.426	8.276	23980349	113.4E6	516.681	286.016 #
27)	Chlordane-5	8.370	0.000	23046235	0	1321.406	N.D. #

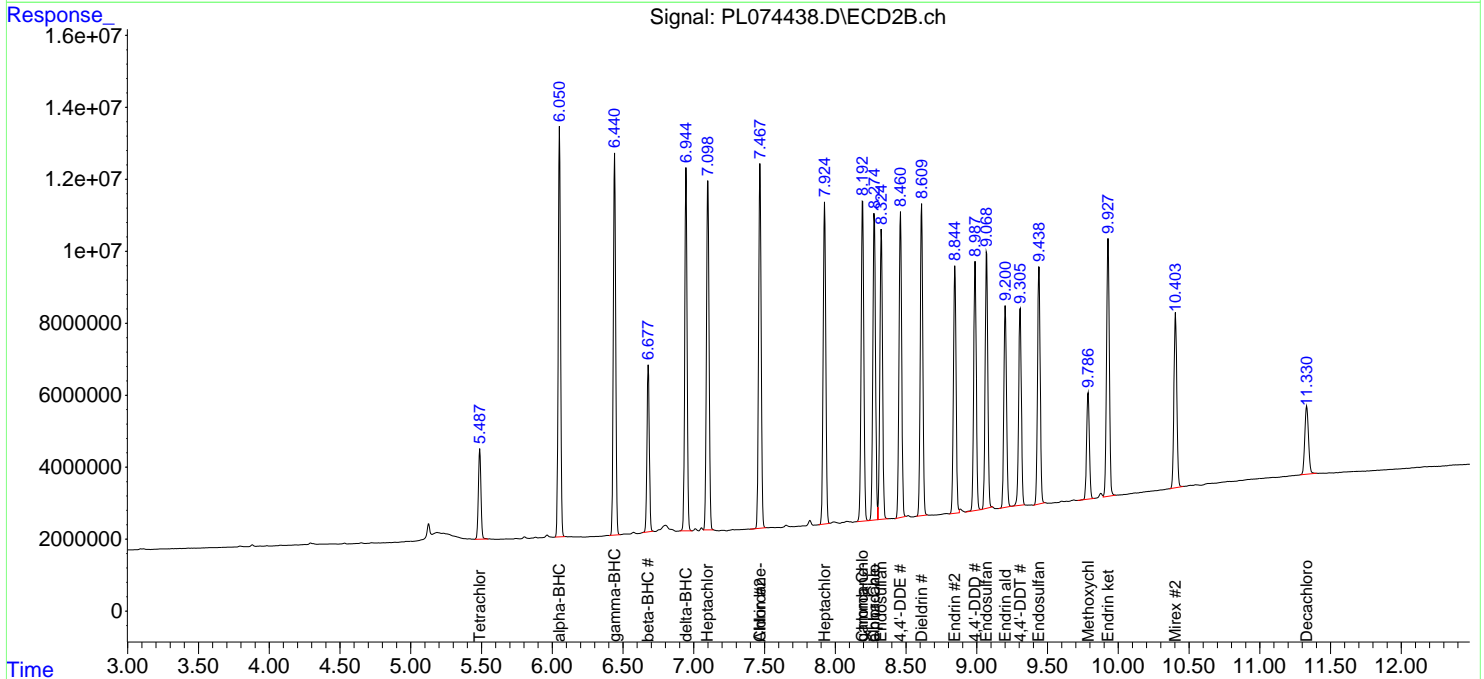
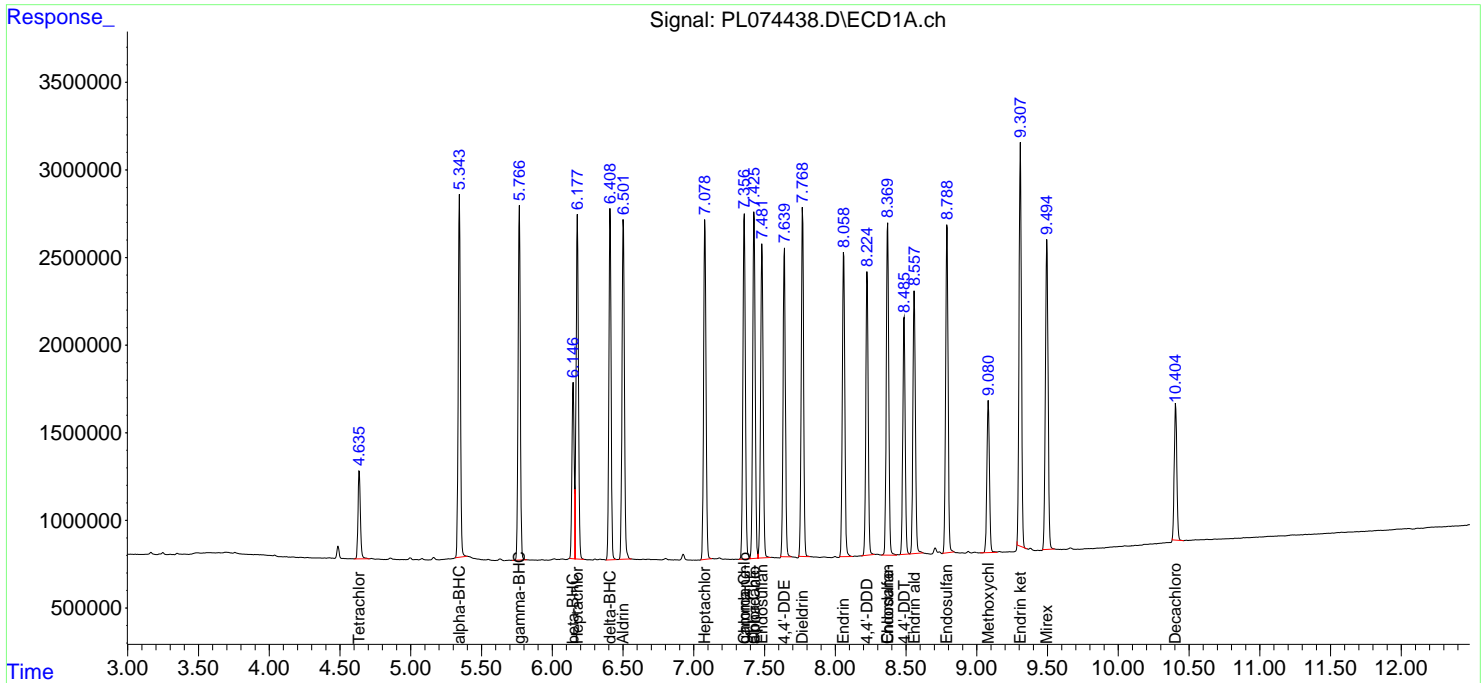
(f)=RT Delta > 1/2 Window (#)=Amounts differ by > 25% (m)=manual int.

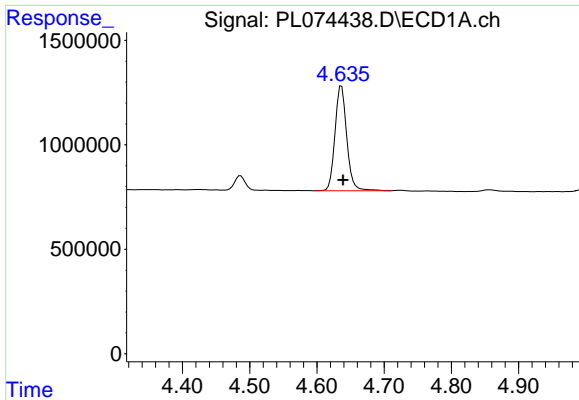
Data Path : Z:\pestpcbsrv\HPCHEM1\ECD_L\Data\PL042822\
 Data File : PL074438.D
 Signal(s) : Signal #1: ECD1A.ch Signal #2: ECD2B.ch
 Acq On : 29 Apr 2022 05:11
 Operator : AR\AJ
 Sample : N2600-04MSD
 Misc :
 ALS Vial : 17 Sample Multiplier: 1

Instrument :
 ECD_L
 ClientSampleId :

Integration File signal 1: autoint1.e
 Integration File signal 2: autoint2.e
 Quant Time: Apr 29 05:58:08 2022
 Quant Method : Z:\pestpcbsrv\HPCHEM1\ECD_L\methods\PL040822.M
 Quant Title : GC Extractables
 QLast Update : Thu Apr 14 09:29:23 2022
 Response via : Initial Calibration
 Integrator: ChemStation

Volume Inj. : 1 µl
 Signal #1 Phase : ZB-MR2 Signal #2 Phase: ZB-MR1
 Signal #1 Info : 30M x 0.32mm x0.2 Signal #2 Info : 30M x 0.32mm x0.5µm

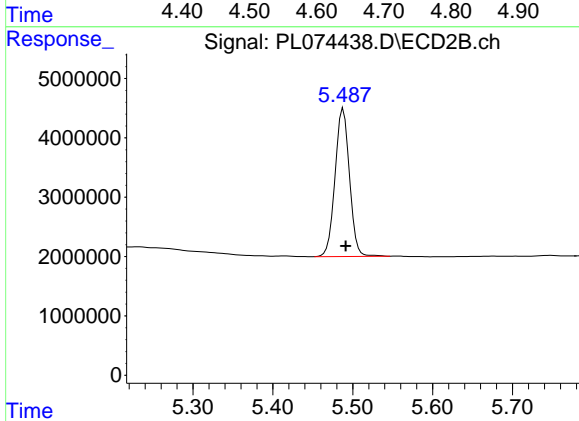




#1 Tetrachloro-m-xylene

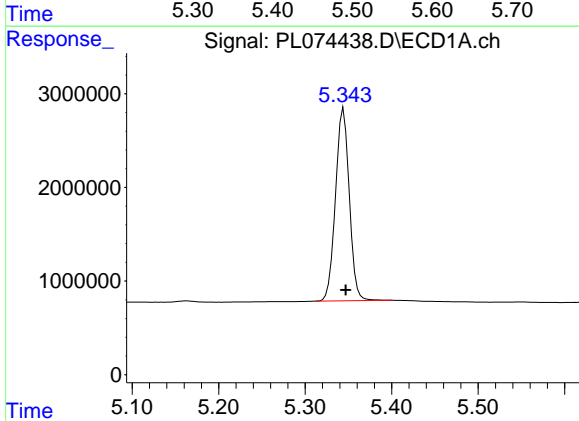
R.T.: 4.637 min
 Delta R.T.: -0.002 min
 Response: 6033810
 Conc: 18.67 ng/ml

Instrument :
 ECD_L
 ClientSampleId :



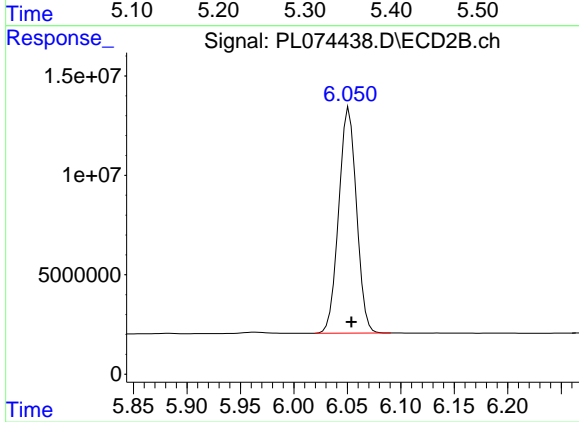
#1 Tetrachloro-m-xylene

R.T.: 5.488 min
 Delta R.T.: -0.003 min
 Response: 31337418
 Conc: 17.58 ng/ml



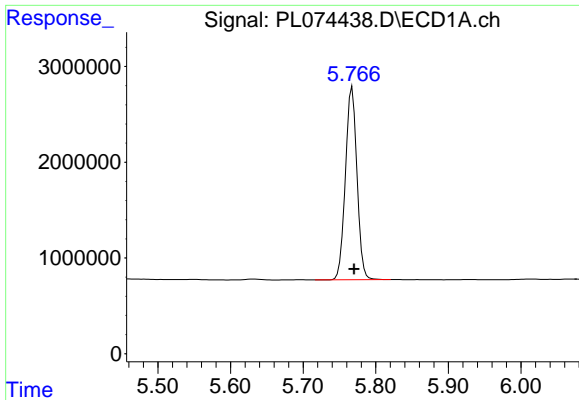
#2 alpha-BHC

R.T.: 5.345 min
 Delta R.T.: -0.002 min
 Response: 22616272
 Conc: 53.89 ng/ml



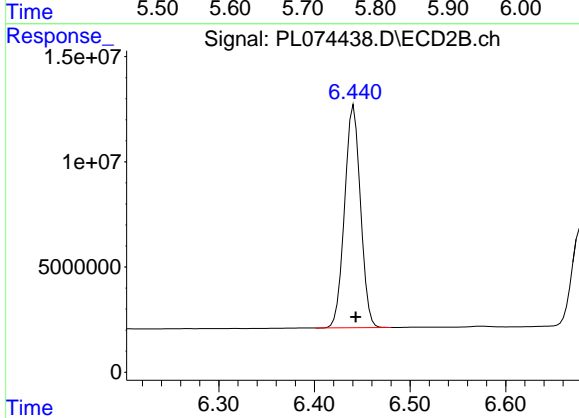
#2 alpha-BHC

R.T.: 6.052 min
 Delta R.T.: -0.002 min
 Response: 131445889
 Conc: 52.20 ng/ml

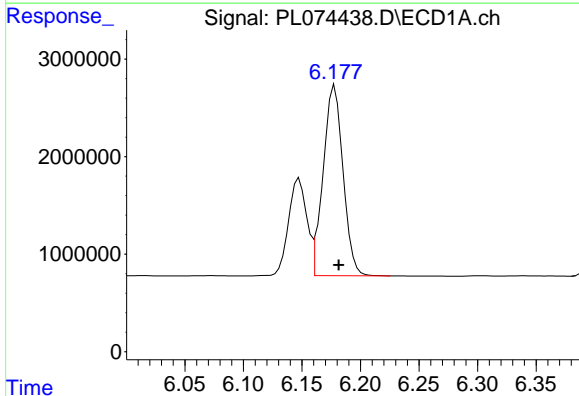


#3 gamma-BHC (Lindane)
 R.T.: 5.768 min
 Delta R.T.: -0.003 min
 Response: 22264976
 Conc: 53.09 ng/ml

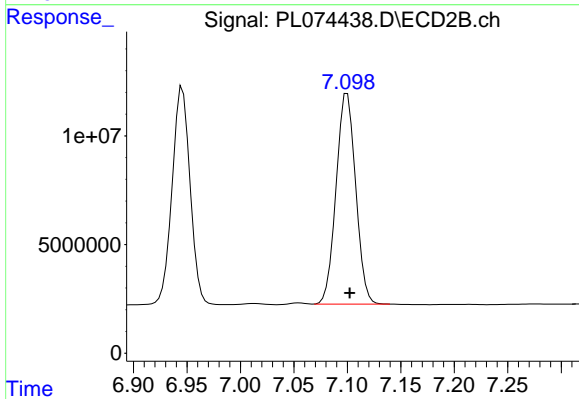
Instrument :
 ECD_L
 ClientSampleId :



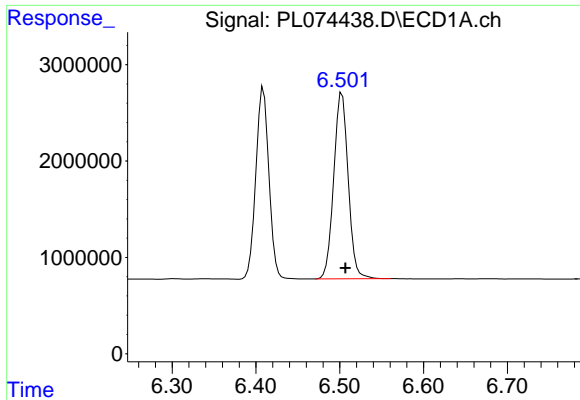
#3 gamma-BHC (Lindane)
 R.T.: 6.441 min
 Delta R.T.: -0.002 min
 Response: 122836860
 Conc: 51.89 ng/ml



#4 Heptachlor
 R.T.: 6.178 min
 Delta R.T.: -0.003 min
 Response: 22982942
 Conc: 51.02 ng/ml

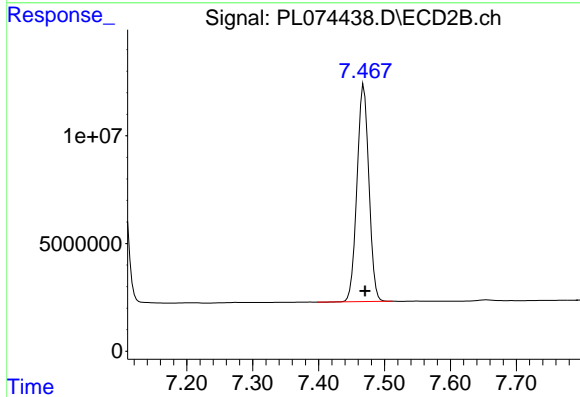


#4 Heptachlor
 R.T.: 7.100 min
 Delta R.T.: -0.002 min
 Response: 123630590
 Conc: 47.40 ng/ml

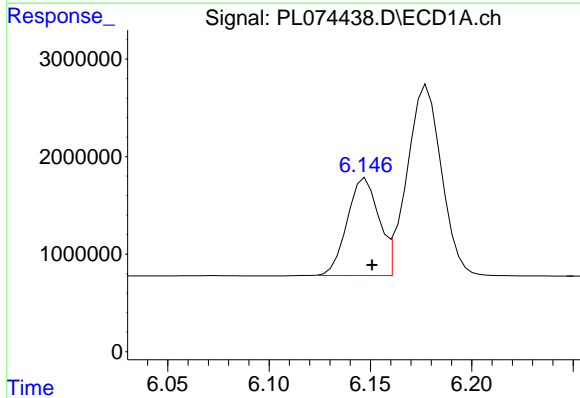


#5 Aldrin
 R.T.: 6.503 min
 Delta R.T.: -0.004 min
 Response: 23103107
 Conc: 55.66 ng/ml

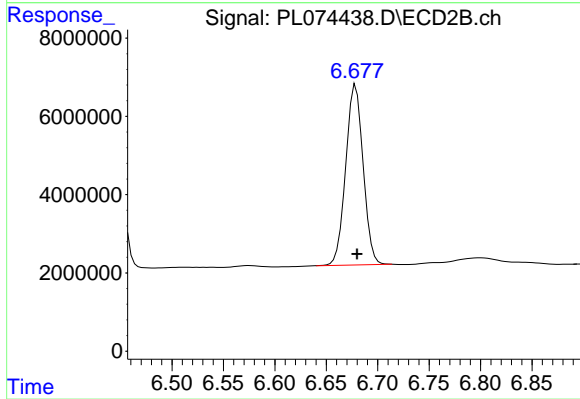
Instrument :
 ECD_L
 ClientSampleId :



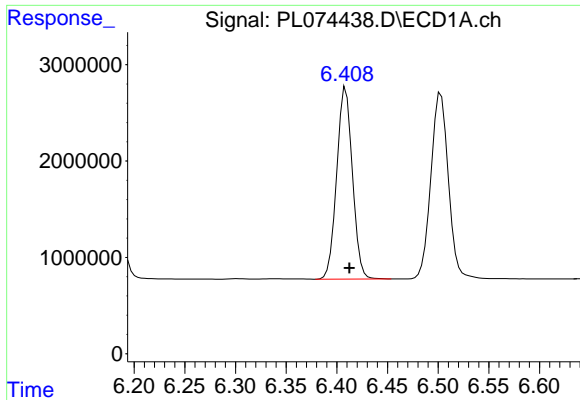
#5 Aldrin
 R.T.: 7.469 min
 Delta R.T.: -0.002 min
 Response: 126220416
 Conc: 53.74 ng/ml



#6 beta-BHC
 R.T.: 6.148 min
 Delta R.T.: -0.003 min
 Response: 10777003
 Conc: 52.74 ng/ml



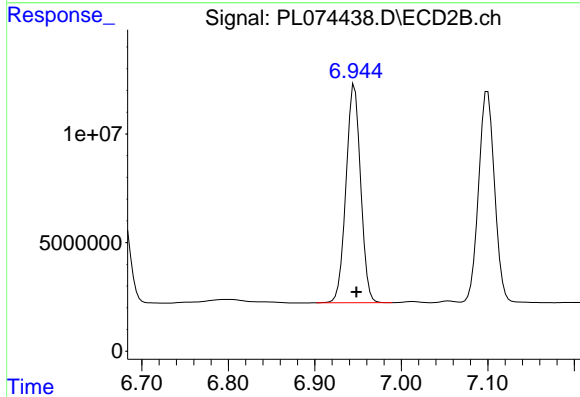
#6 beta-BHC
 R.T.: 6.679 min
 Delta R.T.: -0.001 min
 Response: 54304985
 Conc: 48.18 ng/ml



#7 delta-BHC

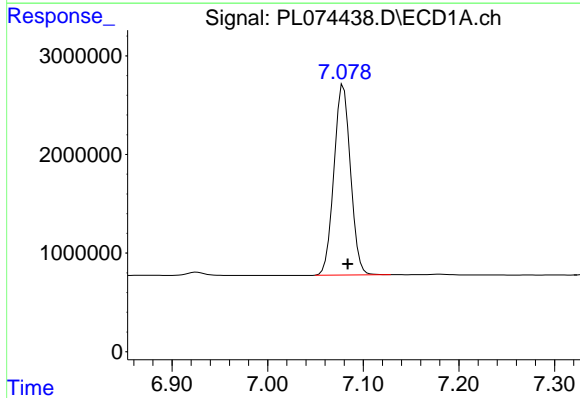
R.T.: 6.409 min
 Delta R.T.: -0.003 min
 Response: 21488446
 Conc: 51.95 ng/ml

Instrument :
 ECD_L
 ClientSampleId :



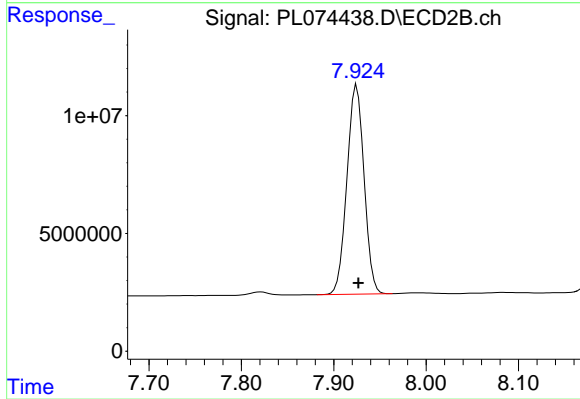
#7 delta-BHC

R.T.: 6.946 min
 Delta R.T.: -0.002 min
 Response: 117372924
 Conc: 48.06 ng/ml



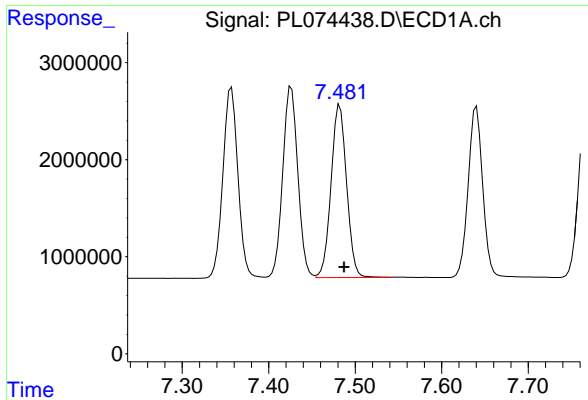
#8 Heptachlor epoxide

R.T.: 7.079 min
 Delta R.T.: -0.005 min
 Response: 23206797
 Conc: 54.10 ng/ml



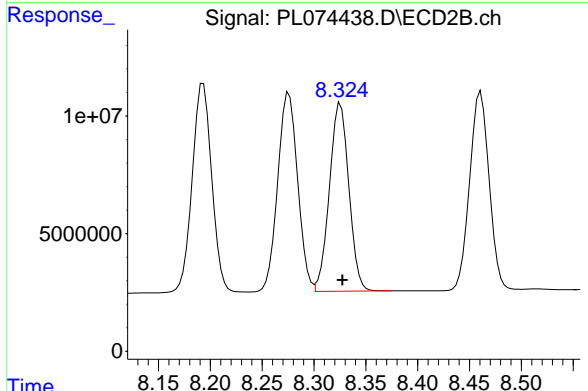
#8 Heptachlor epoxide

R.T.: 7.925 min
 Delta R.T.: -0.002 min
 Response: 114702546
 Conc: 50.94 ng/ml

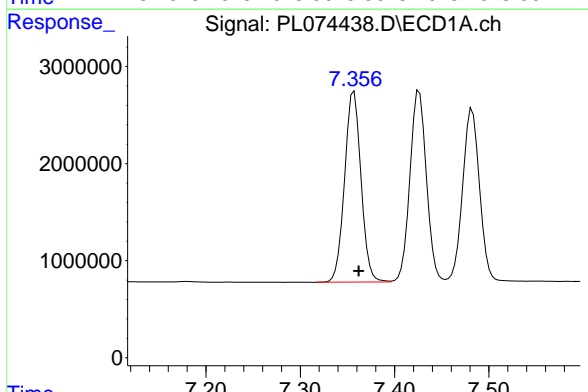


#9 Endosulfan I
 R.T.: 7.482 min
 Delta R.T.: -0.005 min
 Response: 22169560
 Conc: 54.06 ng/ml

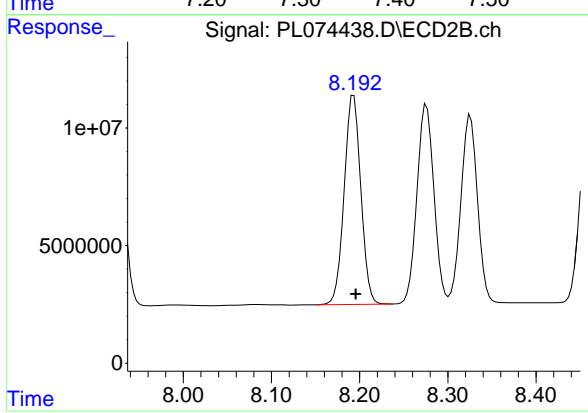
Instrument :
 ECD_L
 ClientSampleId :



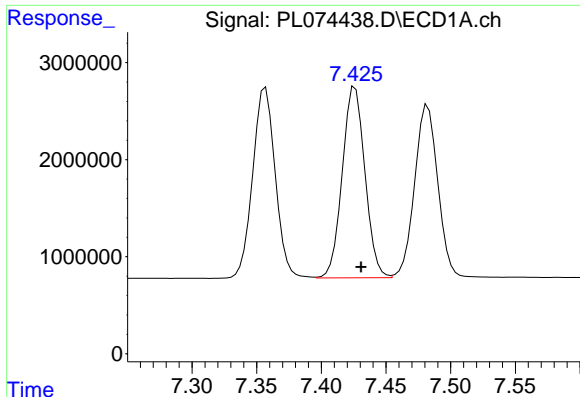
#9 Endosulfan I
 R.T.: 8.326 min
 Delta R.T.: -0.002 min
 Response: 104411480
 Conc: 53.04 ng/ml



#10 gamma-Chlordane
 R.T.: 7.357 min
 Delta R.T.: -0.005 min
 Response: 23808752
 Conc: 54.28 ng/ml



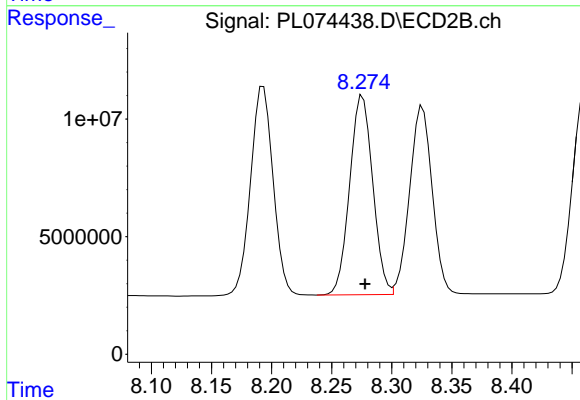
#10 gamma-Chlordane
 R.T.: 8.193 min
 Delta R.T.: -0.002 min
 Response: 116495545
 Conc: 52.23 ng/ml



#11 alpha-Chlordane

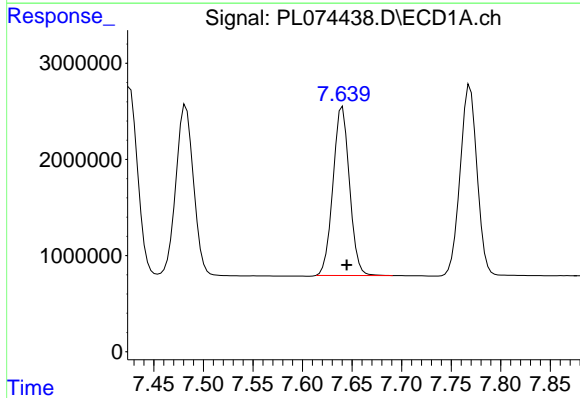
R.T.: 7.426 min
 Delta R.T.: -0.005 min
 Response: 23980349
 Conc: 54.28 ng/ml

Instrument :
 ECD_L
 ClientSampleId :



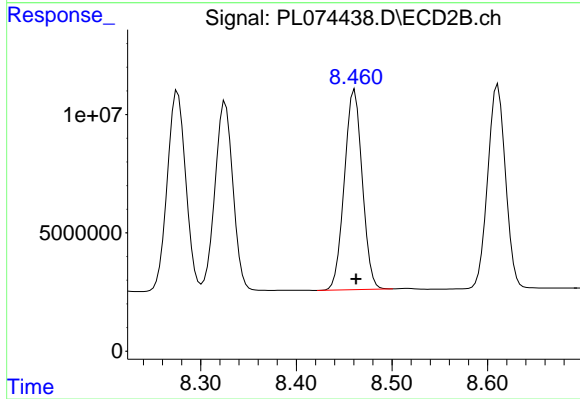
#11 alpha-Chlordane

R.T.: 8.276 min
 Delta R.T.: -0.002 min
 Response: 113440342
 Conc: 52.70 ng/ml



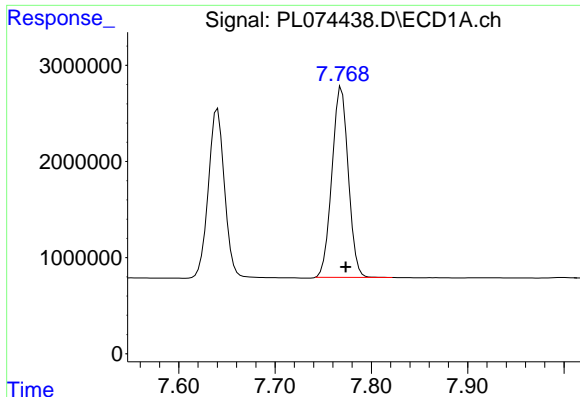
#12 4,4'-DDE

R.T.: 7.640 min
 Delta R.T.: -0.004 min
 Response: 20331286
 Conc: 55.73 ng/ml



#12 4,4'-DDE

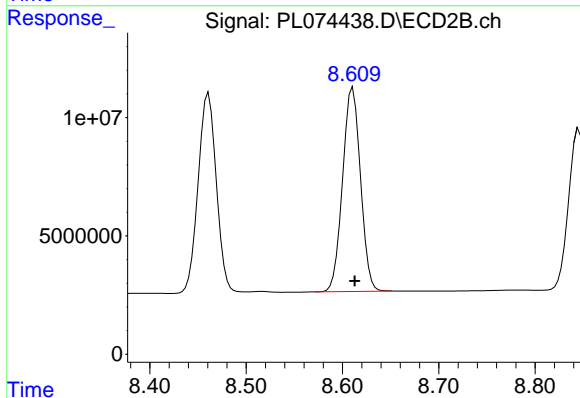
R.T.: 8.461 min
 Delta R.T.: -0.001 min
 Response: 110181863
 Conc: 55.32 ng/ml



#13 Dieldrin

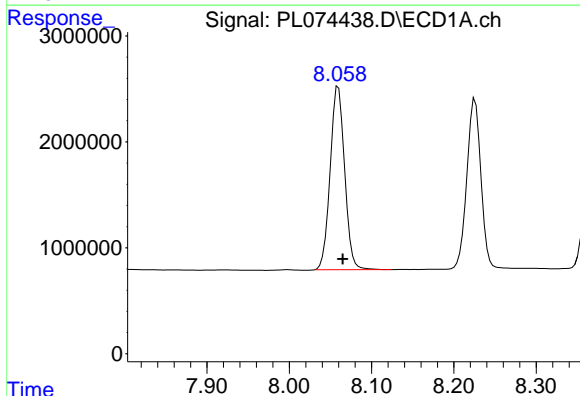
R.T.: 7.769 min
 Delta R.T.: -0.004 min
 Response: 23413986
 Conc: 54.51 ng/ml

Instrument :
 ECD_L
 ClientSampleId :



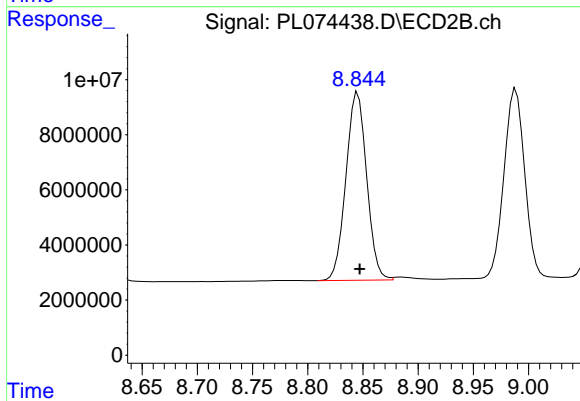
#13 Dieldrin

R.T.: 8.611 min
 Delta R.T.: -0.002 min
 Response: 110957817
 Conc: 55.33 ng/ml



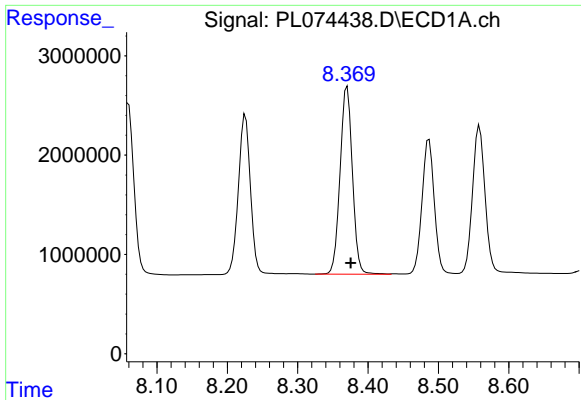
#14 Endrin

R.T.: 8.060 min
 Delta R.T.: -0.005 min
 Response: 21151096
 Conc: 52.07 ng/ml



#14 Endrin

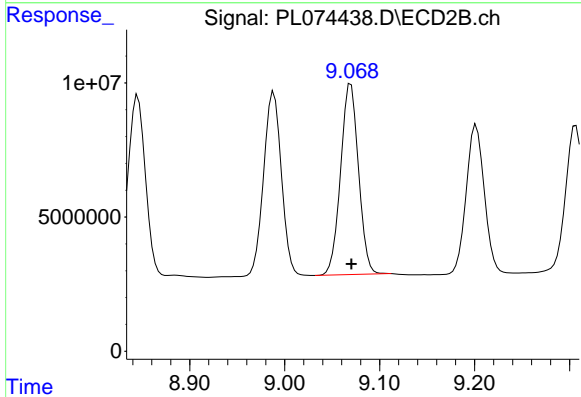
R.T.: 8.845 min
 Delta R.T.: -0.002 min
 Response: 89146607
 Conc: 52.64 ng/ml



#15 Endosulfan II

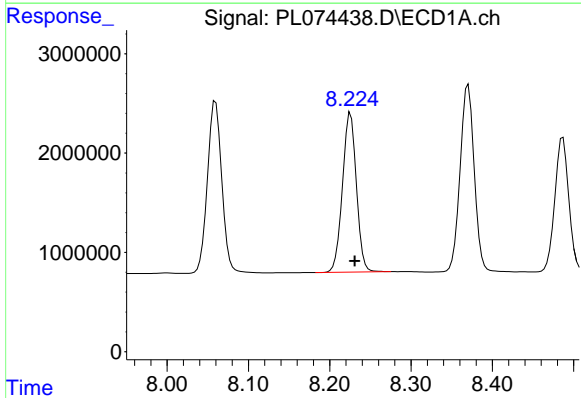
R.T.: 8.370 min
Delta R.T.: -0.005 min
Response: 23046235
Conc: 55.92 ng/ml

Instrument :
ECD_L
ClientSampleId :



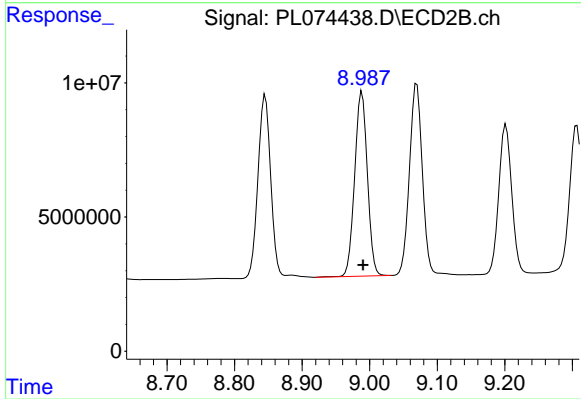
#15 Endosulfan II

R.T.: 9.070 min
Delta R.T.: 0.000 min
Response: 93376775
Conc: 53.75 ng/ml



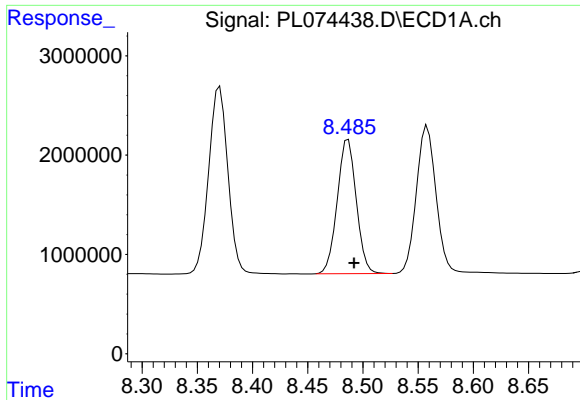
#16 4,4'-DDD

R.T.: 8.226 min
Delta R.T.: -0.005 min
Response: 19035147
Conc: 58.95 ng/ml



#16 4,4'-DDD

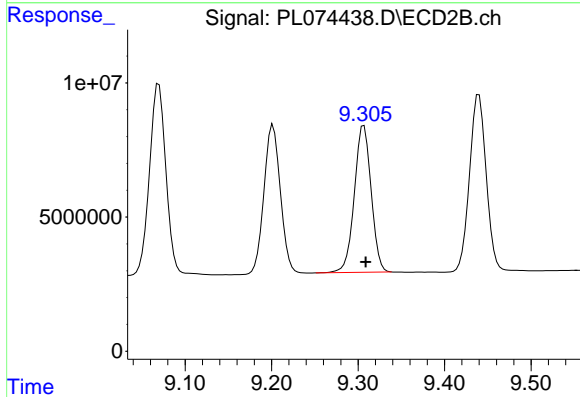
R.T.: 8.989 min
Delta R.T.: -0.001 min
Response: 89952519
Conc: 58.46 ng/ml



#17 4,4'-DDT

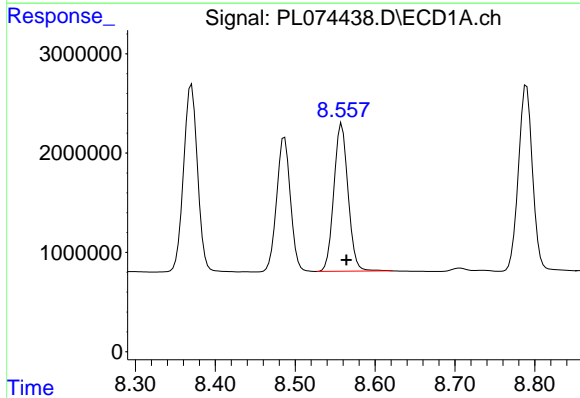
R.T.: 8.487 min
 Delta R.T.: -0.005 min
 Response: 16219313
 Conc: 43.88 ng/ml

Instrument :
 ECD_L
 ClientSampleId :



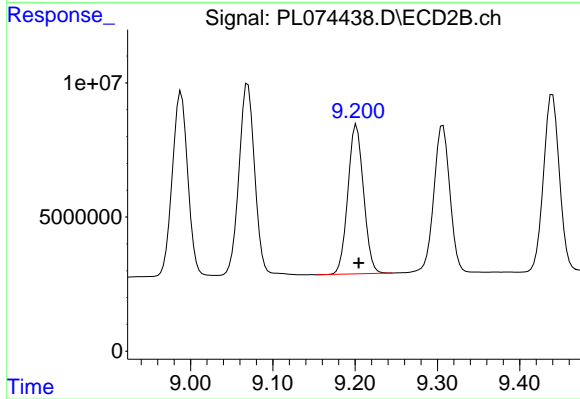
#17 4,4'-DDT

R.T.: 9.307 min
 Delta R.T.: -0.002 min
 Response: 73895964
 Conc: 41.69 ng/ml



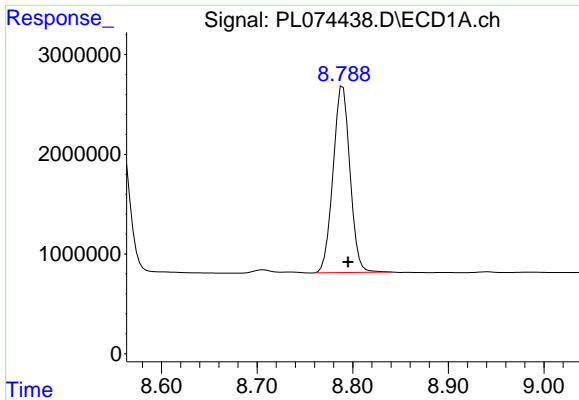
#18 Endrin aldehyde

R.T.: 8.558 min
 Delta R.T.: -0.006 min
 Response: 18398179
 Conc: 56.86 ng/ml



#18 Endrin aldehyde

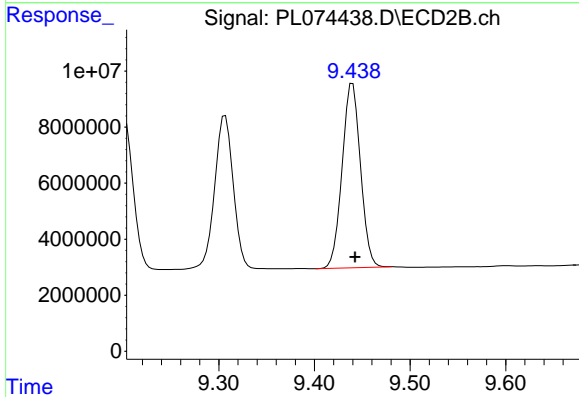
R.T.: 9.202 min
 Delta R.T.: -0.003 min
 Response: 73530492
 Conc: 56.93 ng/ml



#19 Endosulfan Sulfate

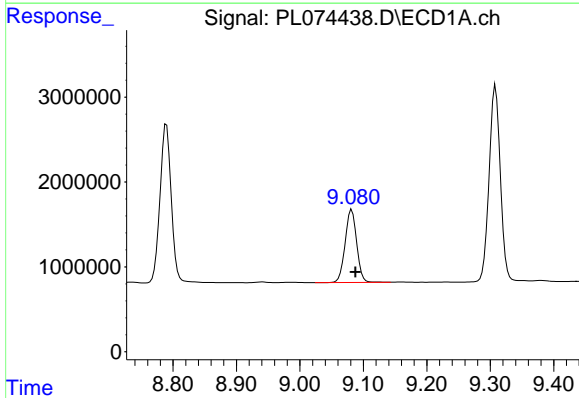
R.T.: 8.790 min
 Delta R.T.: -0.005 min
 Response: 22903494
 Conc: 53.64 ng/ml

Instrument :
 ECD_L
 ClientSampleId :



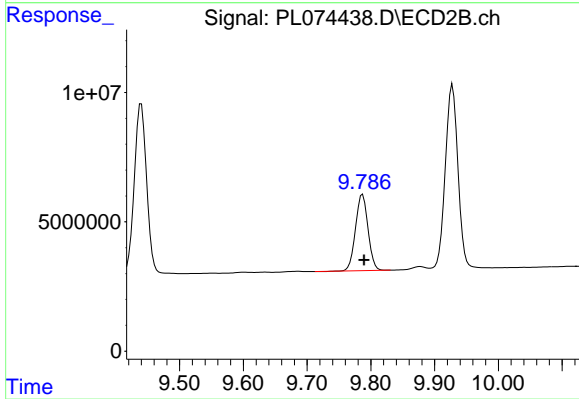
#19 Endosulfan Sulfate

R.T.: 9.440 min
 Delta R.T.: -0.002 min
 Response: 88265962
 Conc: 53.03 ng/ml



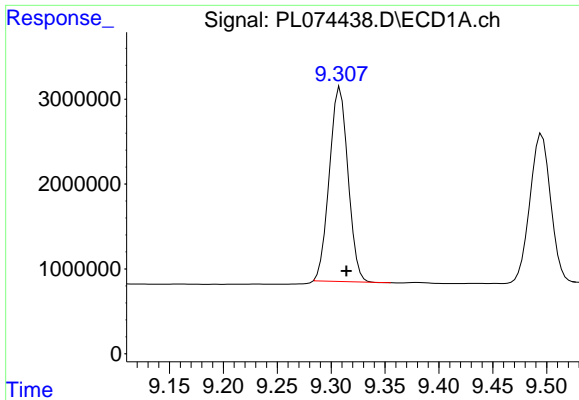
#20 Methoxychlor

R.T.: 9.082 min
 Delta R.T.: -0.006 min
 Response: 10874096
 Conc: 43.80 ng/ml



#20 Methoxychlor

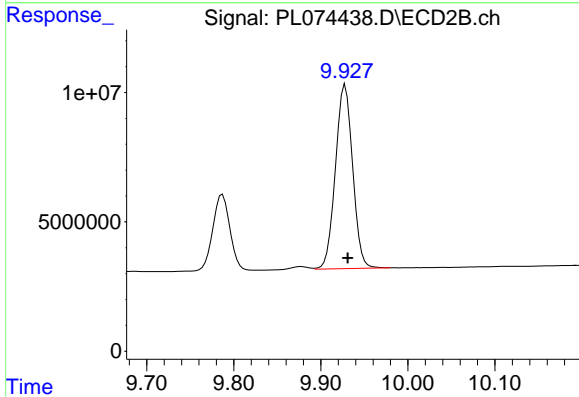
R.T.: 9.787 min
 Delta R.T.: -0.002 min
 Response: 40117252
 Conc: 41.71 ng/ml



#21 Endrin ketone

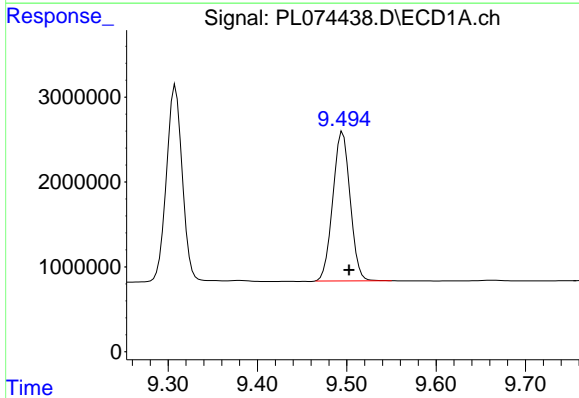
R.T.: 9.308 min
Delta R.T.: -0.006 min
Response: 27457570
Conc: 56.20 ng/ml

Instrument :
ECD_L
ClientSampleId :



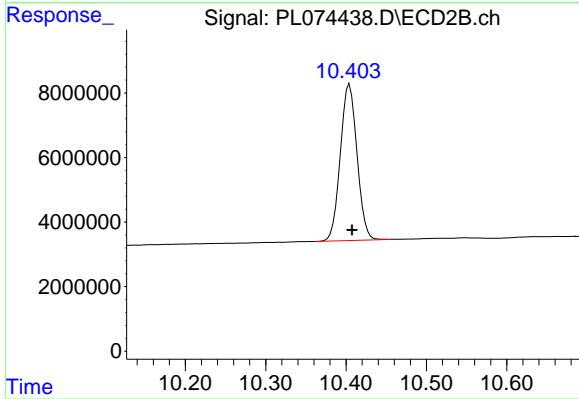
#21 Endrin ketone

R.T.: 9.928 min
Delta R.T.: -0.003 min
Response: 97924140
Conc: 56.57 ng/ml



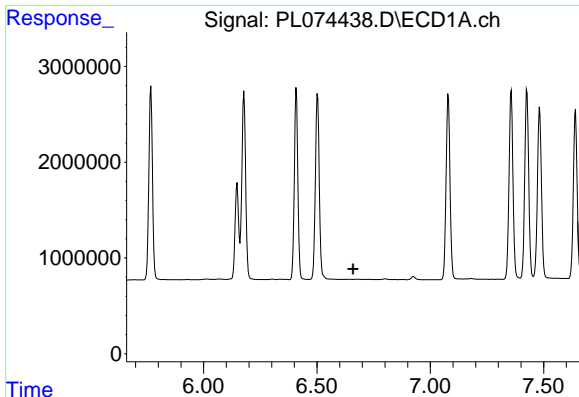
#22 Mirex

R.T.: 9.496 min
Delta R.T.: -0.007 min
Response: 23680455
Conc: 50.77 ng/ml



#22 Mirex

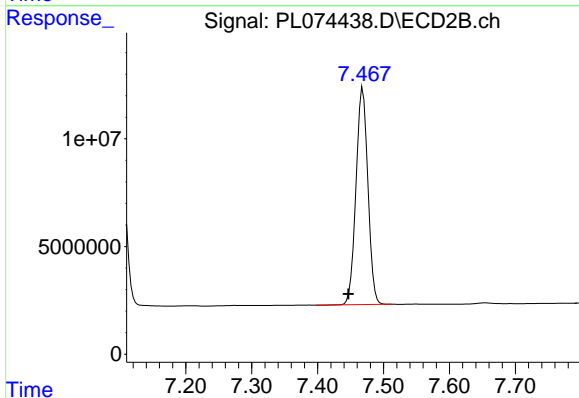
R.T.: 10.404 min
Delta R.T.: -0.003 min
Response: 69796902
Conc: 50.67 ng/ml



#24 Chlordane-2

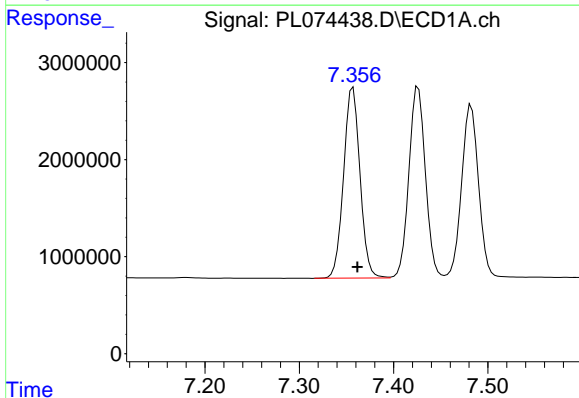
R.T.: 0.000 min
 Exp R.T.: 6.659 min
 Response: 0
 Conc: N.D.

Instrument :
 ECD_L
 ClientSampleId :



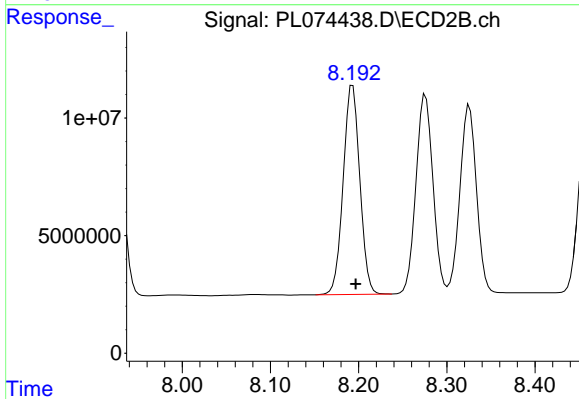
#24 Chlordane-2

R.T.: 7.469 min
 Delta R.T.: 0.022 min
 Response: 126220416
 Conc: 1527.40 ng/ml



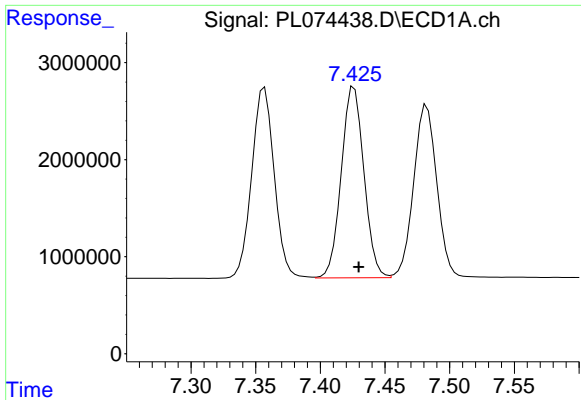
#25 Chlordane-3

R.T.: 7.357 min
 Delta R.T.: -0.005 min
 Response: 23808752
 Conc: 550.34 ng/ml



#25 Chlordane-3

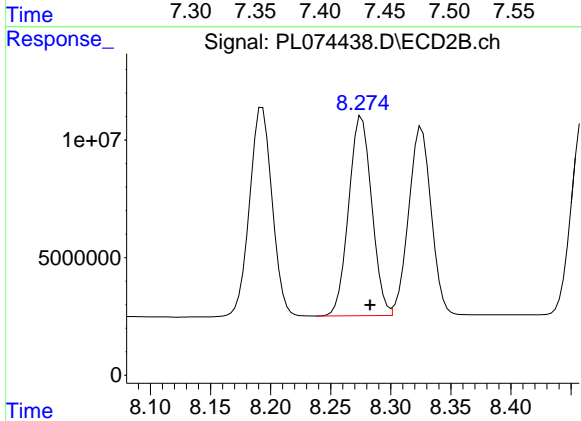
R.T.: 8.193 min
 Delta R.T.: -0.003 min
 Response: 116495545
 Conc: 344.35 ng/ml



#26 Chlordane-4

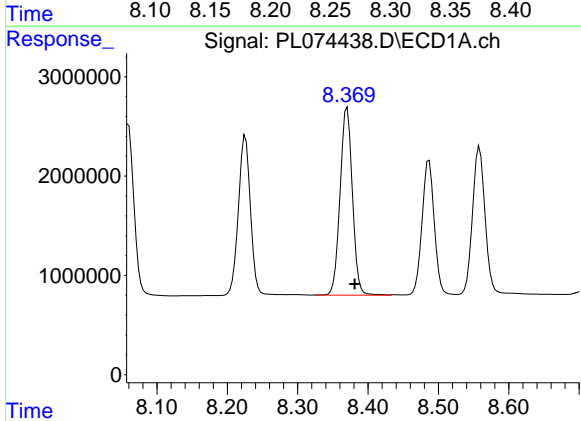
R.T.: 7.426 min
 Delta R.T.: -0.003 min
 Response: 23980349
 Conc: 516.68 ng/ml

Instrument :
 ECD_L
 ClientSampleId :



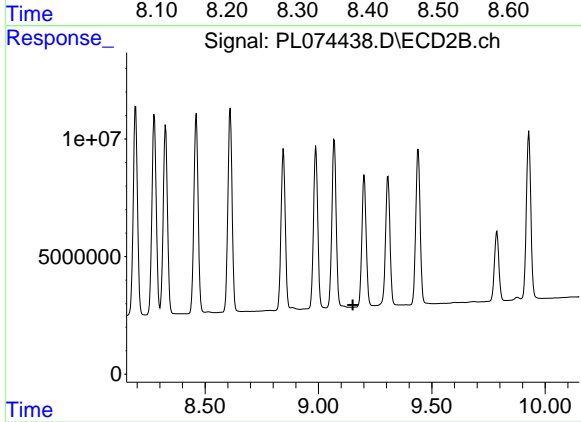
#26 Chlordane-4

R.T.: 8.276 min
 Delta R.T.: -0.007 min
 Response: 113440342
 Conc: 286.02 ng/ml



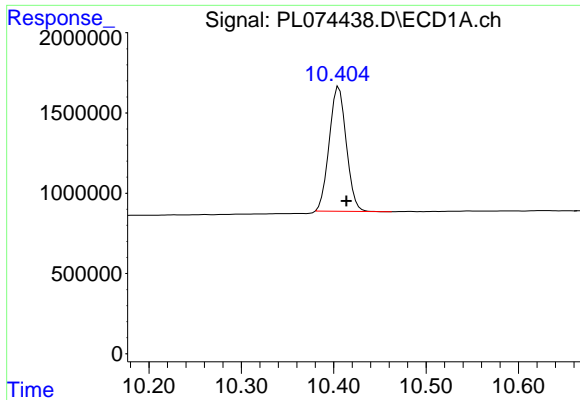
#27 Chlordane-5

R.T.: 8.370 min
 Delta R.T.: -0.011 min
 Response: 23046235
 Conc: 1321.41 ng/ml



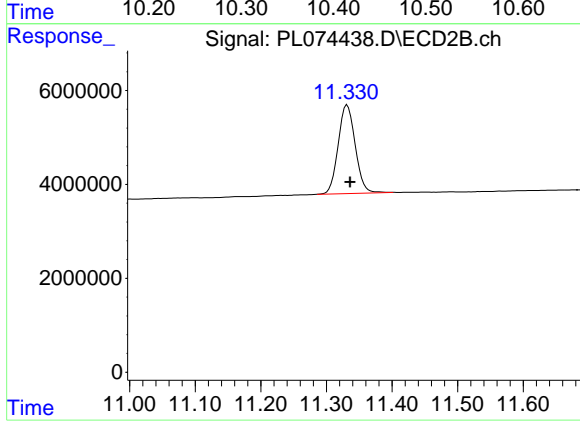
#27 Chlordane-5

R.T.: 0.000 min
 Exp R.T. : 9.152 min
 Response: 0
 Conc: N.D.



#28 Decachlorobiphenyl
R.T.: 10.406 min
Delta R.T.: -0.008 min
Response: 9968553
Conc: 19.17 ng/ml

Instrument :
ECD_L
ClientSampleId :



#28 Decachlorobiphenyl
R.T.: 11.332 min
Delta R.T.: -0.004 min
Response: 34166289
Conc: 19.34 ng/ml