

Data Path : Z:\pestpcbsrv\HPCHEM1\ECD_L\Data\PL042921\
 Data File : PL066582.D
 Signal(s) : Signal #1: ECD1A.ch Signal #2: ECD2B.ch
 Acq On : 29 Apr 2021 21:13
 Operator : AR\AJ
 Sample : PB136077TB
 Misc :
 ALS Vial : 32 Sample Multiplier: 1

Instrument :
 ECD_L
 ClientSampleId :

Integration File signal 1: autoint1.e
 Integration File signal 2: autoint2.e
 Quant Time: Apr 30 02:55:25 2021
 Quant Method : Z:\pestpcbsrv\HPCHEM1\ECD_L\methods\PL042621.M
 Quant Title : GC Extractables
 QLast Update : Wed Apr 28 08:49:49 2021
 Response via : Initial Calibration
 Integrator: ChemStation

Volume Inj. : 1 µl
 Signal #1 Phase : ZB-MR2 Signal #2 Phase: ZB-MR1
 Signal #1 Info : 30M x 0.32mm x0.2 Signal #2 Info : 30M x 0.32mm x0.5µm

Compound	RT#1	RT#2	Resp#1	Resp#2	ng/ml	ng/ml

System Monitoring Compounds						
1) SA Tetrachlo...	3.429	4.155	74563265	71121216	19.788	20.251
28) SA Decachlor...	8.167	9.356	70074026	56154549	18.276	18.152
Target Compounds						
2) A alpha-BHC	3.852	0.000	5969850	0	0.959	N.D. #
6) B beta-BHC	0.000	5.036	0	8180365	N.D.	0.448 #
9) A Endosulfan I	0.000	6.410f	0	2100695	N.D.	0.552 #
10) B gamma-Chl...	0.000	6.317	0	2744926	N.D.	0.659 #
11) B alpha-Chl...	0.000	6.410f	0	2100695	N.D.	0.506 #
23) Chlordane-1	4.314f	0.000	3807946	0	22.528	N.D. #
25) Chlordane-3	0.000	6.317	0	2744926	N.D.	4.897 #
26) Chlordane-4	0.000	6.410f	0	2100695	N.D.	3.129 #

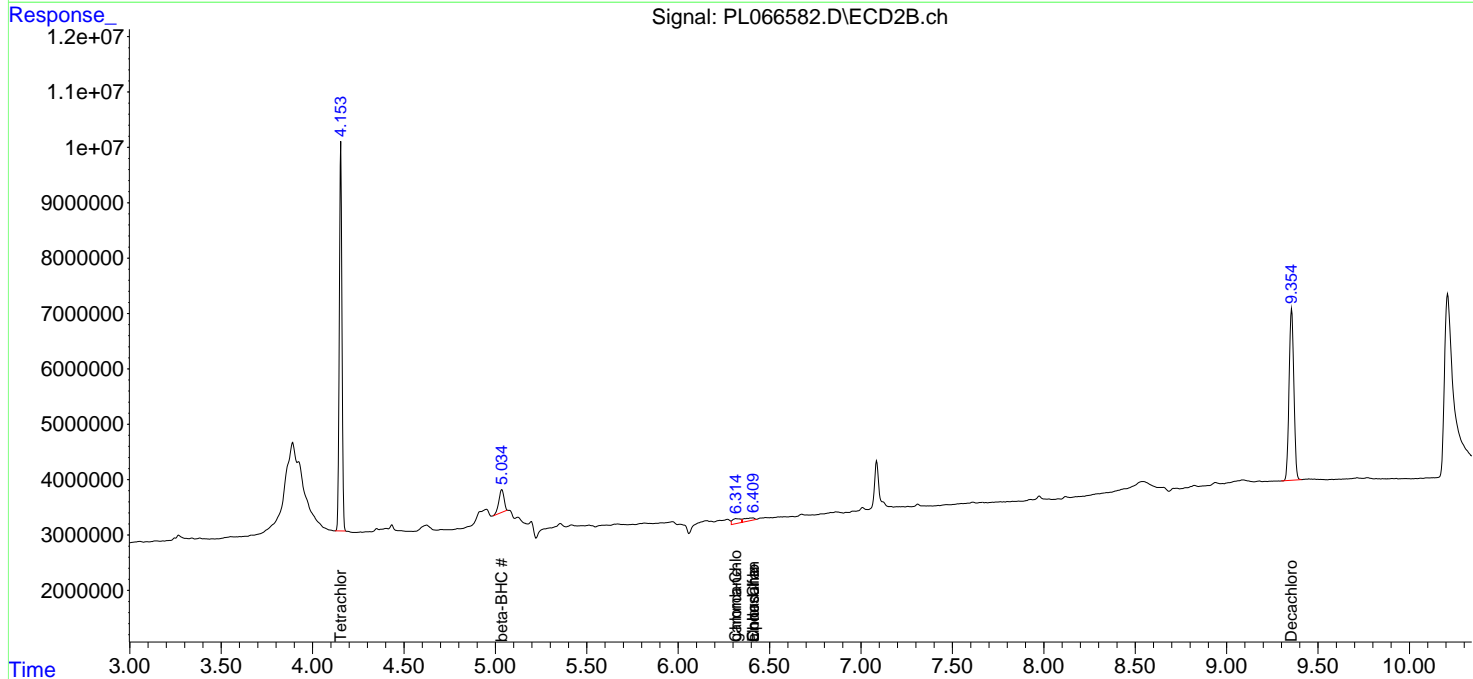
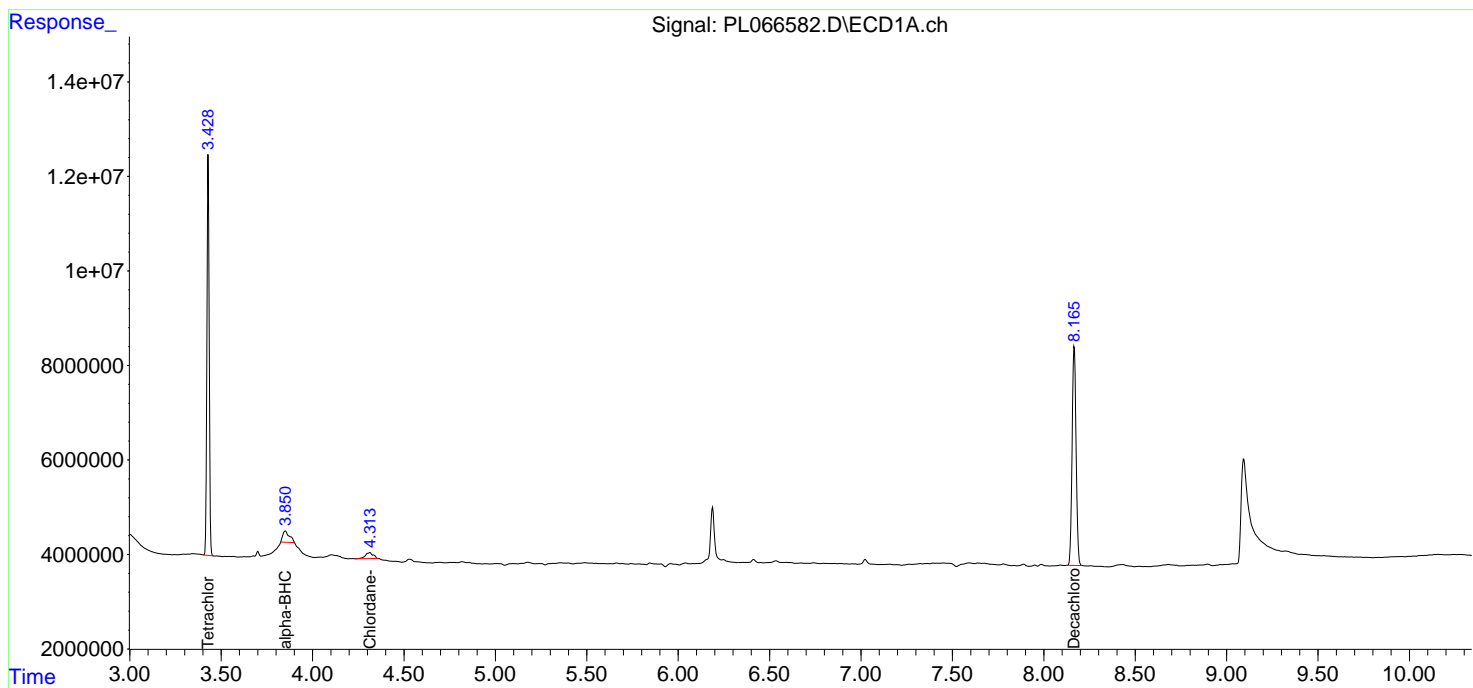
(f)=RT Delta > 1/2 Window (#)=Amounts differ by > 25% (m)=manual int.

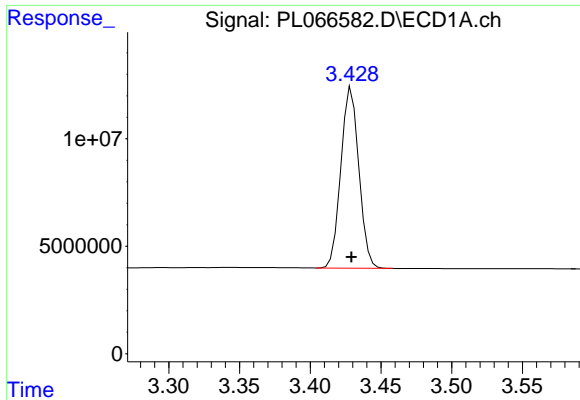
Data Path : Z:\pestpcbsrv\HPCHEM1\ECD_L\Data\PL042921\
 Data File : PL066582.D
 Signal(s) : Signal #1: ECD1A.ch Signal #2: ECD2B.ch
 Acq On : 29 Apr 2021 21:13
 Operator : AR\AJ
 Sample : PB136077TB
 Misc :
 ALS Vial : 32 Sample Multiplier: 1

Instrument :
 ECD_L
 ClientSampled :

Integration File signal 1: autoint1.e
 Integration File signal 2: autoint2.e
 Quant Time: Apr 30 02:55:25 2021
 Quant Method : Z:\pestpcbsrv\HPCHEM1\ECD_L\methods\PL042621.M
 Quant Title : GC Extractables
 QLast Update : Wed Apr 28 08:49:49 2021
 Response via : Initial Calibration
 Integrator: ChemStation

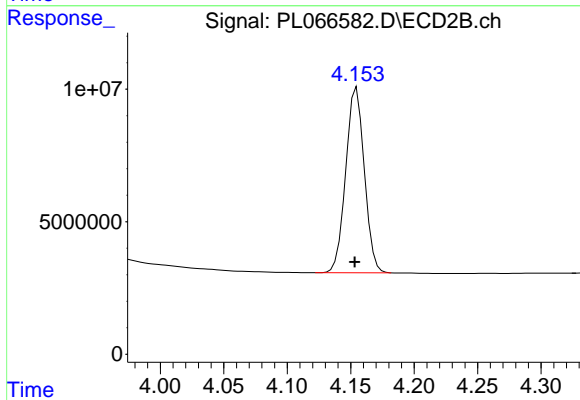
Volume Inj. : 1 µl
 Signal #1 Phase : ZB-MR2 Signal #2 Phase: ZB-MR1
 Signal #1 Info : 30M x 0.32mm x0.2 Signal #2 Info : 30M x 0.32mm x0.5µm



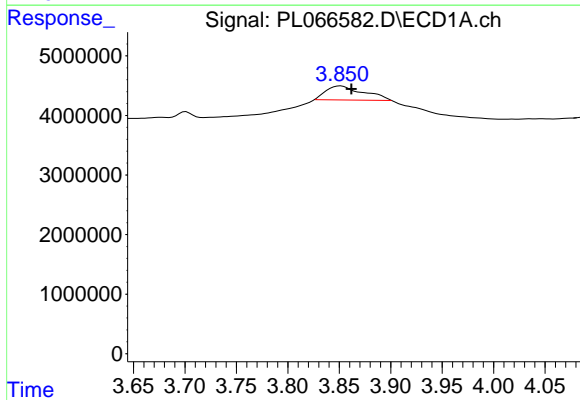


#1 Tetrachloro-m-xylene
 R.T.: 3.429 min
 Delta R.T.: 0.000 min
 Response: 74563265
 Conc: 19.79 ng/ml

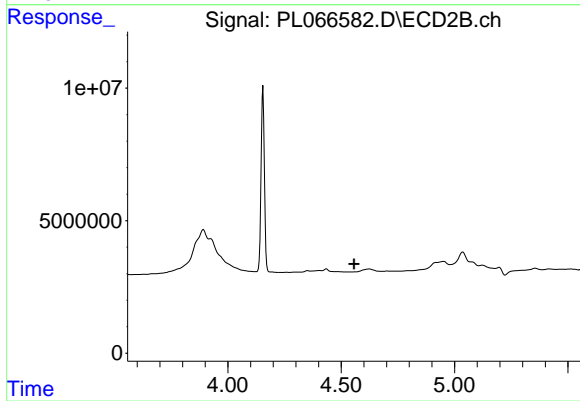
Instrument :
 ECD_L
 ClientSampled :



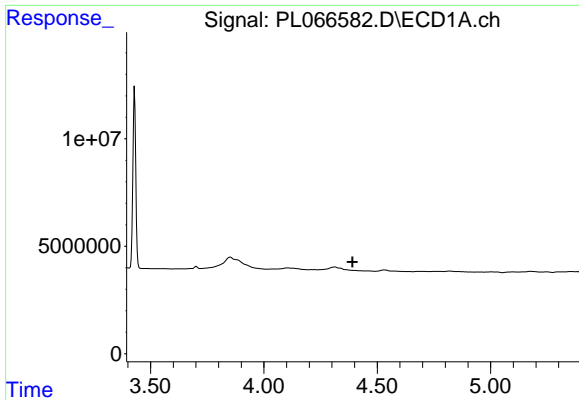
#1 Tetrachloro-m-xylene
 R.T.: 4.155 min
 Delta R.T.: 0.001 min
 Response: 71121216
 Conc: 20.25 ng/ml



#2 alpha-BHC
 R.T.: 3.852 min
 Delta R.T.: -0.010 min
 Response: 5969850
 Conc: 0.96 ng/ml

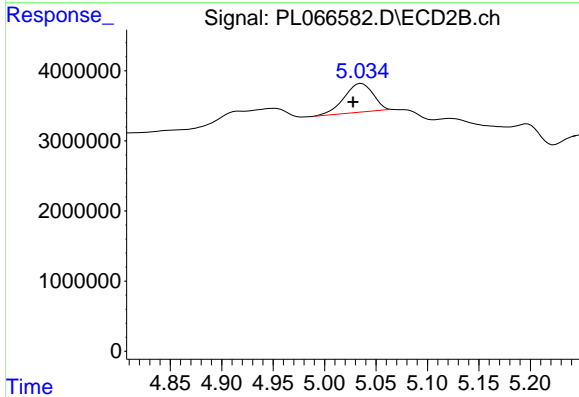


#2 alpha-BHC
 R.T.: 0.000 min
 Exp R.T. : 4.557 min
 Response: 0
 Conc: N.D.

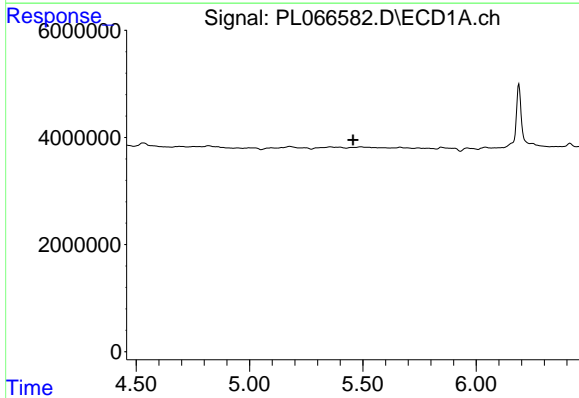


#6 beta-BHC
 R.T.: 0.000 min
 Exp R.T. : 4.391 min
 Response: 0
 Conc: N.D.

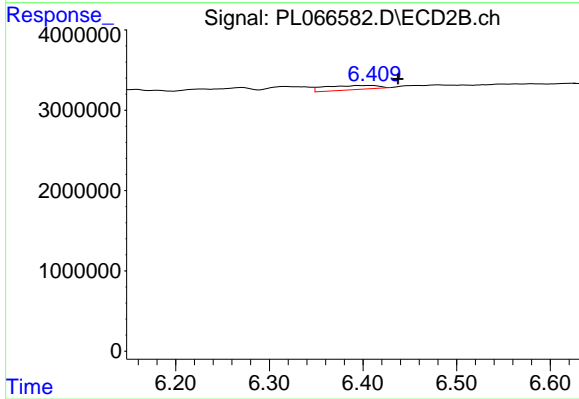
Instrument :
 ECD_L
 ClientSampled :



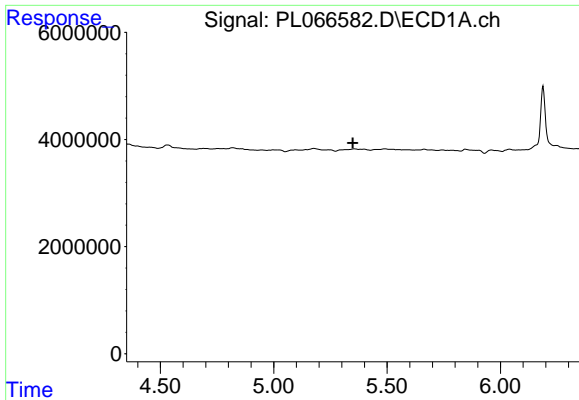
#6 beta-BHC
 R.T.: 5.036 min
 Delta R.T.: 0.008 min
 Response: 8180365
 Conc: 0.45 ng/ml



#9 Endosulfan I
 R.T.: 0.000 min
 Exp R.T. : 5.457 min
 Response: 0
 Conc: N.D.

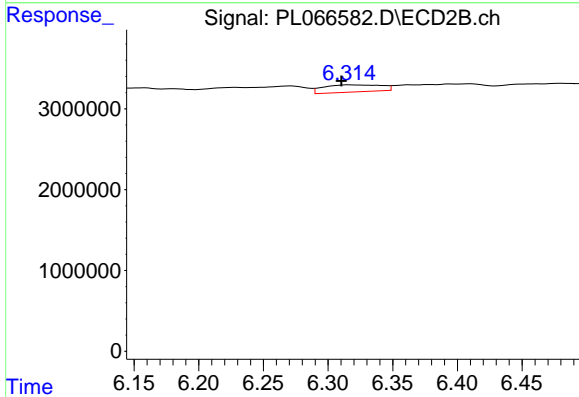


#9 Endosulfan I
 R.T.: 6.410 min
 Delta R.T.: -0.028 min
 Response: 2100695
 Conc: 0.55 ng/ml

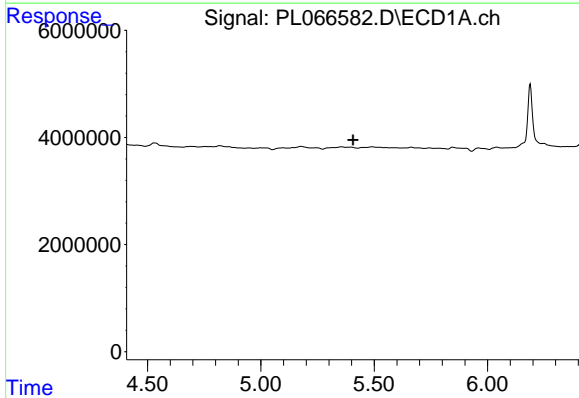


#10 gamma-Chlordane
 R.T.: 0.000 min
 Exp R.T. : 5.349 min
 Response: 0
 Conc: N.D.

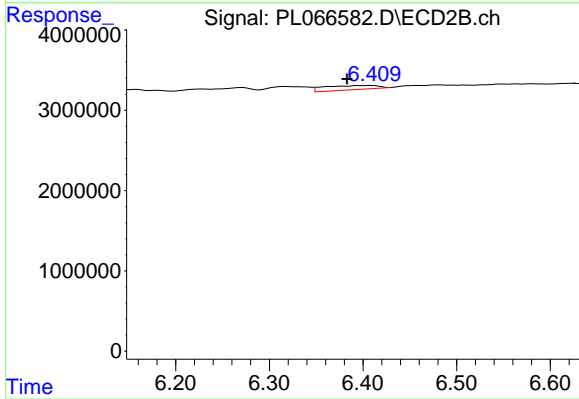
Instrument :
 ECD_L
 ClientSampled :



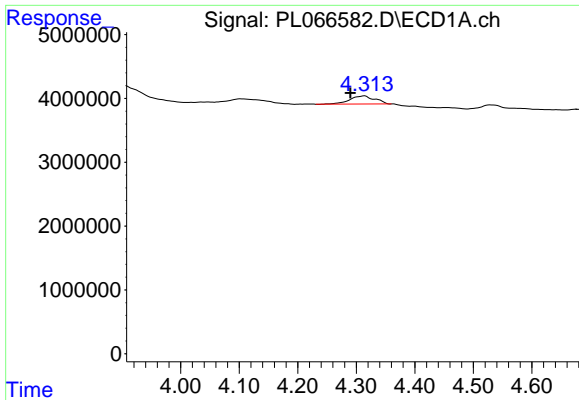
#10 gamma-Chlordane
 R.T.: 6.317 min
 Delta R.T.: 0.006 min
 Response: 2744926
 Conc: 0.66 ng/ml



#11 alpha-Chlordane
 R.T.: 0.000 min
 Exp R.T. : 5.406 min
 Response: 0
 Conc: N.D.

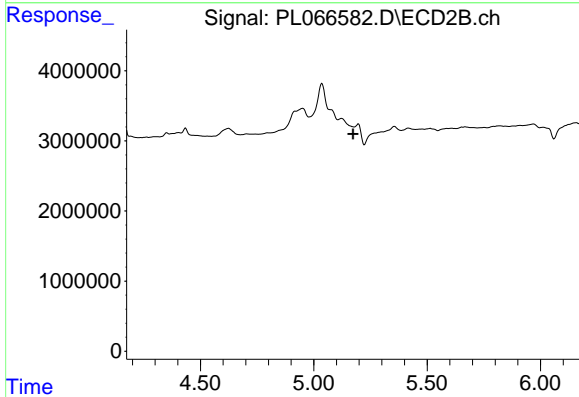


#11 alpha-Chlordane
 R.T.: 6.410 min
 Delta R.T.: 0.027 min
 Response: 2100695
 Conc: 0.51 ng/ml

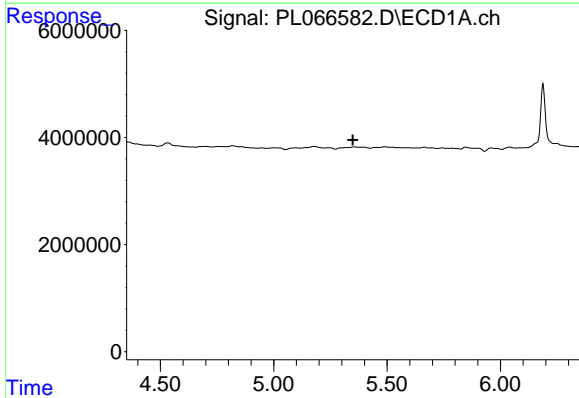


#23 Chlordane-1
 R.T.: 4.314 min
 Delta R.T.: 0.024 min
 Response: 3807946
 Conc: 22.53 ng/ml

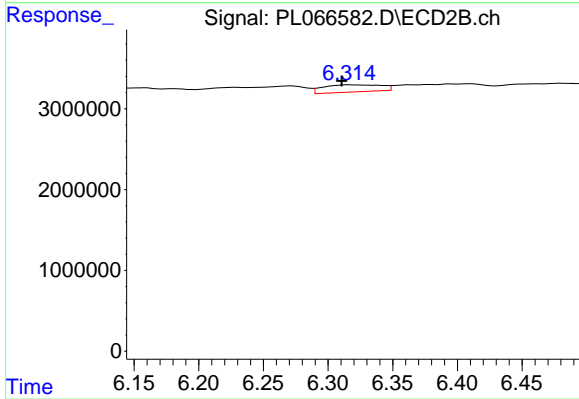
Instrument :
 ECD_L
 ClientSampled :



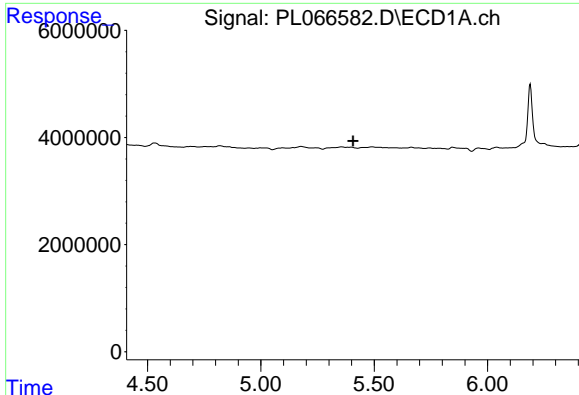
#23 Chlordane-1
 R.T.: 0.000 min
 Exp R.T. : 5.174 min
 Response: 0
 Conc: N.D.



#25 Chlordane-3
 R.T.: 0.000 min
 Exp R.T. : 5.350 min
 Response: 0
 Conc: N.D.

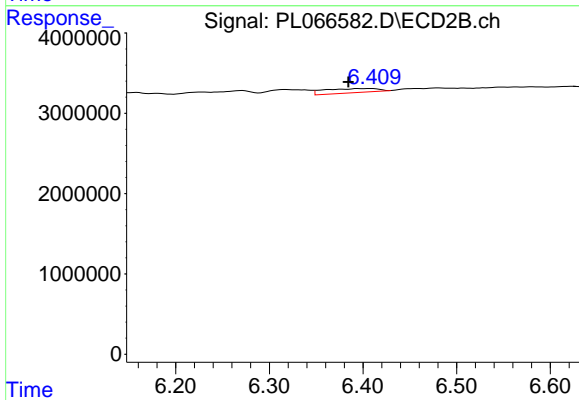


#25 Chlordane-3
 R.T.: 6.317 min
 Delta R.T.: 0.006 min
 Response: 2744926
 Conc: 4.90 ng/ml

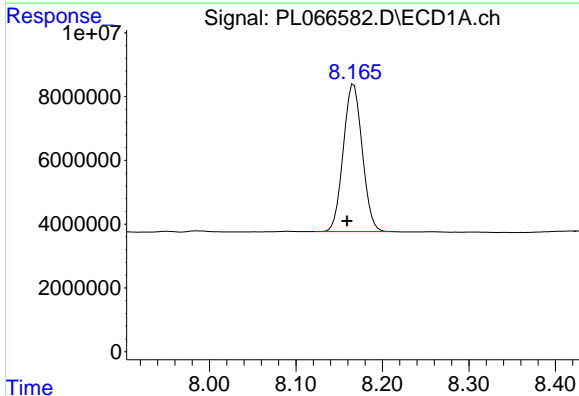


#26 Chlordane-4
 R.T.: 0.000 min
 Exp R.T.: 5.407 min
 Response: 0
 Conc: N.D.

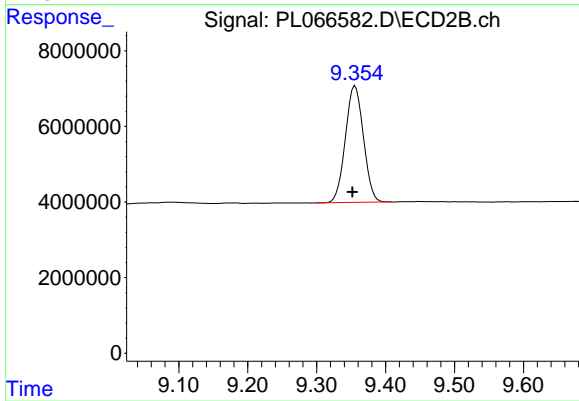
Instrument :
 ECD_L
 ClientSampled :



#26 Chlordane-4
 R.T.: 6.410 min
 Delta R.T.: 0.026 min
 Response: 2100695
 Conc: 3.13 ng/ml



#28 Decachlorobiphenyl
 R.T.: 8.167 min
 Delta R.T.: 0.008 min
 Response: 70074026
 Conc: 18.28 ng/ml



#28 Decachlorobiphenyl
 R.T.: 9.356 min
 Delta R.T.: 0.004 min
 Response: 56154549
 Conc: 18.15 ng/ml