

Data Path : Z:\pestpcbsrv\HPCHEM1\ECD\_L\Data\PL043021\  
 Data File : PL066598.D  
 Signal(s) : Signal #1: ECD1A.ch Signal #2: ECD2B.ch  
 Acq On : 30 Apr 2021 11:43  
 Operator : AR\AJ  
 Sample : PEM  
 Misc :  
 ALS Vial : 3 Sample Multiplier: 1

Instrument :  
 ECD\_L  
 ClientSampleId :  
 PEM

Integration File signal 1: autoint1.e  
 Integration File signal 2: autoint2.e  
 Quant Time: May 01 01:07:01 2021  
 Quant Method : Z:\pestpcbsrv\HPCHEM1\ECD\_L\methods\PL042621.M  
 Quant Title : GC Extractables  
 QLast Update : Wed Apr 28 08:49:49 2021  
 Response via : Initial Calibration  
 Integrator: ChemStation

Volume Inj. : 1 µl  
 Signal #1 Phase : ZB-MR2 Signal #2 Phase: ZB-MR1  
 Signal #1 Info : 30M x 0.32mm x0.2 Signal #2 Info : 30M x 0.32mm x0.5µm

Compound	RT#1	RT#2	Resp#1	Resp#2	ng/ml	ng/ml
-----						
System Monitoring Compounds						
1) SA Tetrachlo...	3.429	4.154	69185371	73797332	18.361	21.013
28) SA Decachlor...	8.166	9.357	67559465	59199808	17.620	19.136
Target Compounds						
2) A alpha-BHC	3.862	4.559	53414599	56067733	8.583	10.899 #
3) MA gamma-BHC...	4.142	4.852	48559443	47167158	8.826	9.777
6) B beta-BHC	4.391	5.029	24646740	30996832	9.317	10.985
11) B alpha-Chl...	0.000	6.399f	0	2251006	N.D.	0.543 #
13) MA Dieldrin	0.000	6.689	0	2480043	N.D.	0.633 #
14) MA Endrin	5.955	6.925	202.3E6	161.2E6	46.452	51.447
16) A 4,4'-DDD	6.088	7.041	3459880	4220331	0.911	1.355 #
17) MA 4,4'-DDT	6.328	7.343	368.5E6	315.3E6	94.508	97.430
18) B Endrin al...	6.397	0.000	1585287	0	0.468	N.D. #
20) A Methoxychlor	6.877	7.803	446.1E6	413.5E6	227.094	230.506
21) B Endrin ke...	7.093	7.971	3403691	3794211	0.777	1.069 #
23) Chlordane-1	4.284	0.000	1059958	0	6.271	N.D. #
26) Chlordane-4	0.000	6.399f	0	2251006	N.D.	3.353 #
-----						

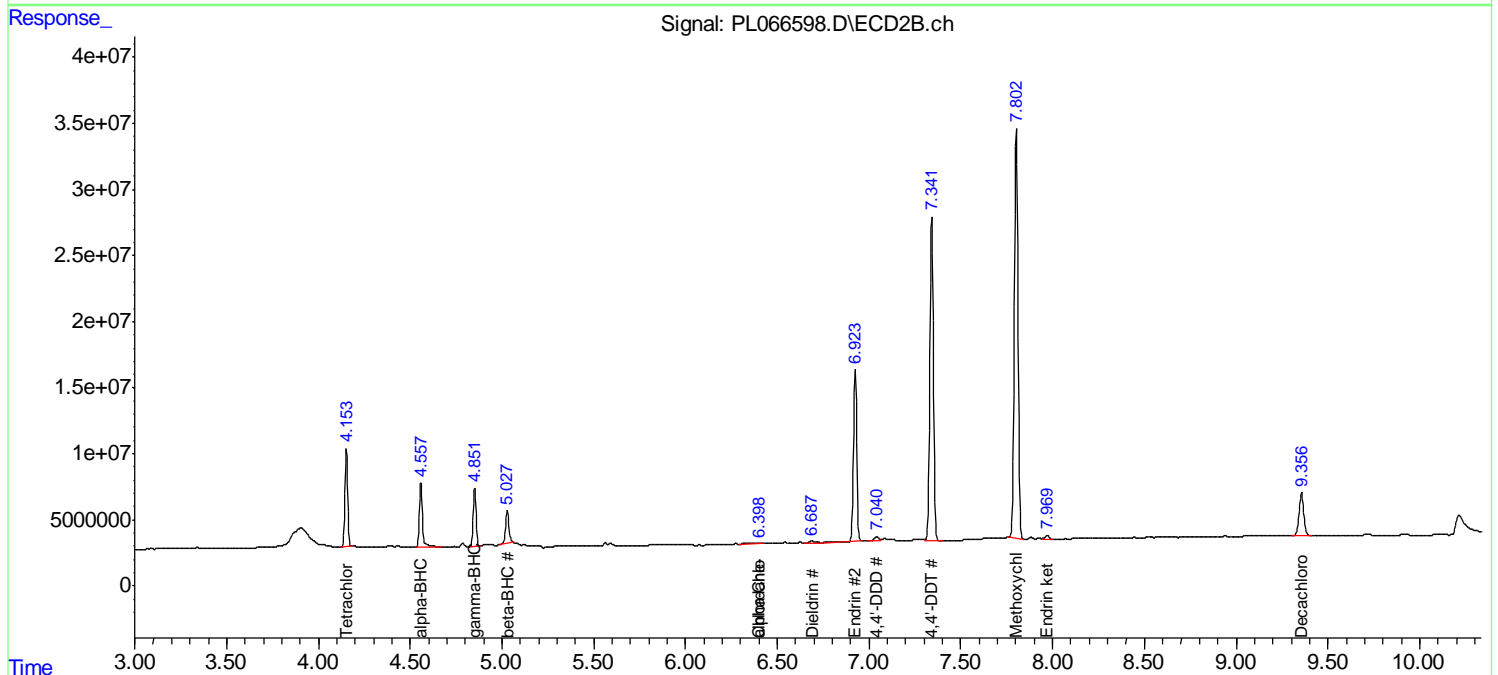
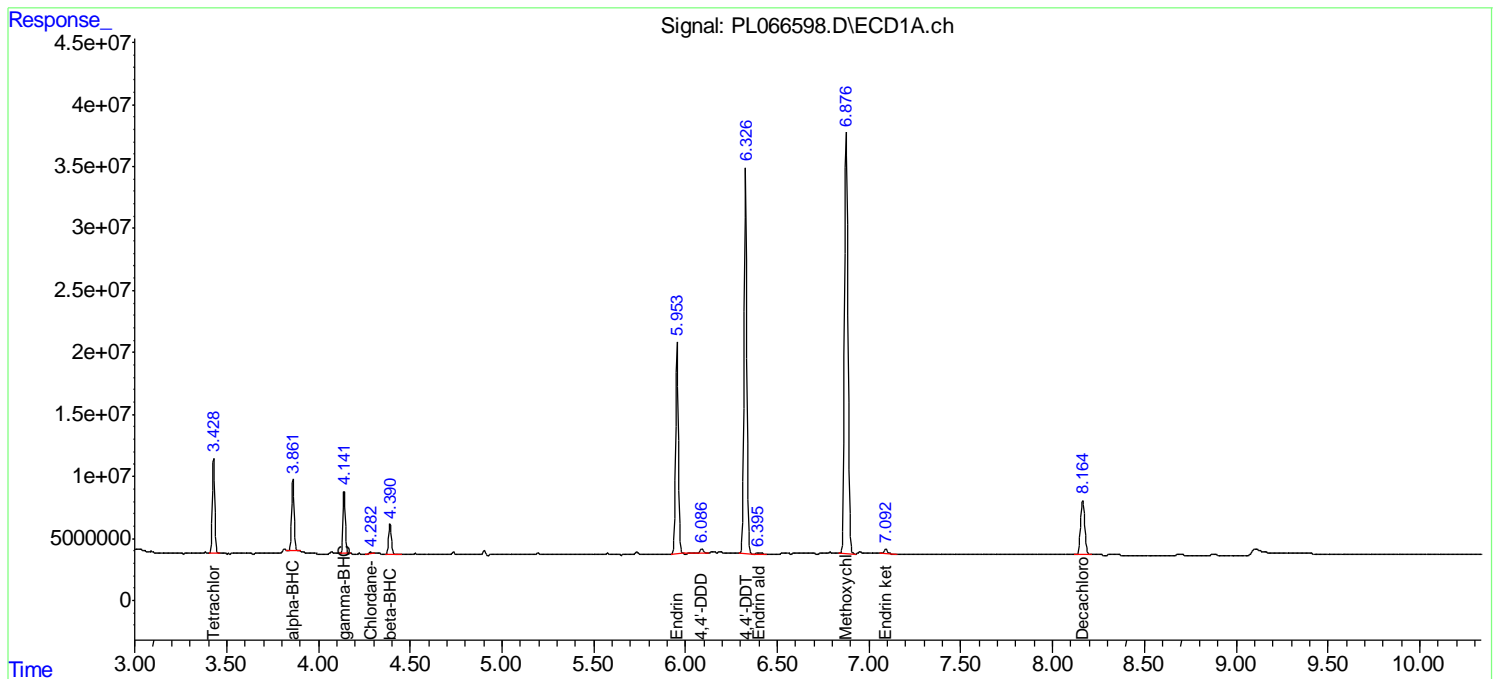
(f)=RT Delta > 1/2 Window (#)=Amounts differ by > 25% (m)=manual int.

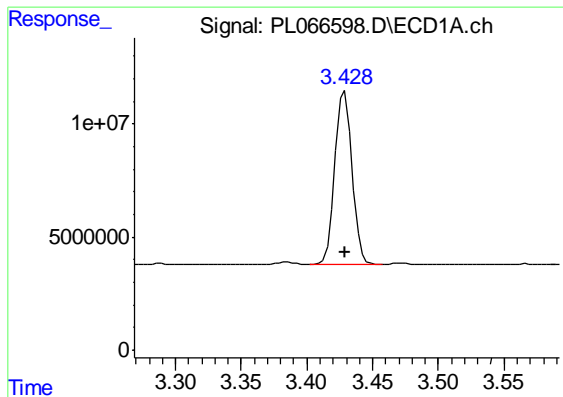
Data Path : Z:\pestpcbsrv\HPCHEM1\ECD\_L\Data\PL043021\  
 Data File : PL066598.D  
 Signal(s) : Signal #1: ECD1A.ch Signal #2: ECD2B.ch  
 Acq On : 30 Apr 2021 11:43  
 Operator : AR\AJ  
 Sample : PEM  
 Misc :  
 ALS Vial : 3 Sample Multiplier: 1

Instrument :  
 ECD\_L  
 ClientSampled :  
 PEM

Integration File signal 1: autoint1.e  
 Integration File signal 2: autoint2.e  
 Quant Time: May 01 01:07:01 2021  
 Quant Method : Z:\pestpcbsrv\HPCHEM1\ECD\_L\methods\PL042621.M  
 Quant Title : GC Extractables  
 QLast Update : Wed Apr 28 08:49:49 2021  
 Response via : Initial Calibration  
 Integrator: ChemStation

Volume Inj. : 1 µl  
 Signal #1 Phase : ZB-MR2 Signal #2 Phase: ZB-MR1  
 Signal #1 Info : 30M x 0.32mm x0.2 Signal #2 Info : 30M x 0.32mm x0.5µm

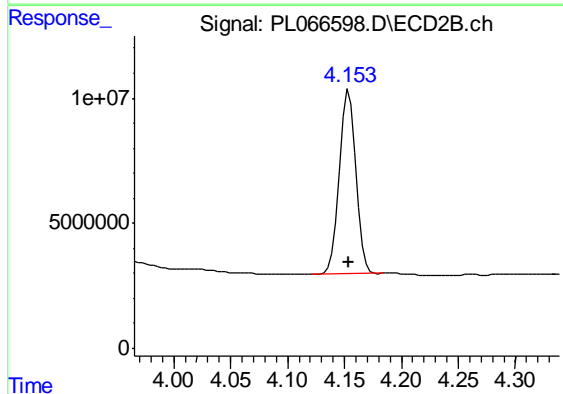




#1 Tetrachloro-m-xylene

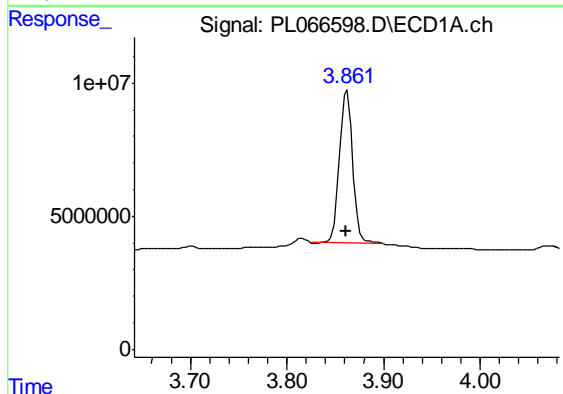
R.T.: 3.429 min  
 Delta R.T.: 0.000 min  
 Response: 69185371  
 Conc: 18.36 ng/ml

Instrument :  
 ECD\_L  
 ClientSampled :  
 PEM



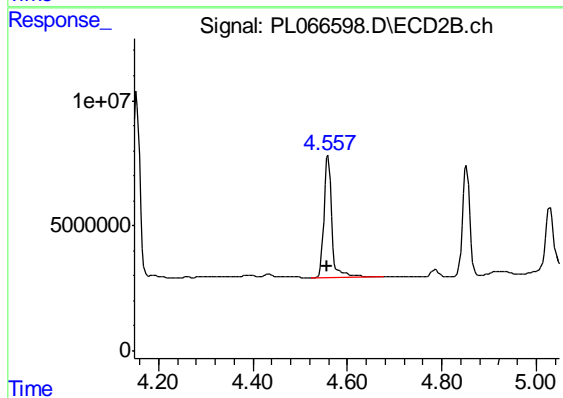
#1 Tetrachloro-m-xylene

R.T.: 4.154 min  
 Delta R.T.: 0.000 min  
 Response: 73797332  
 Conc: 21.01 ng/ml



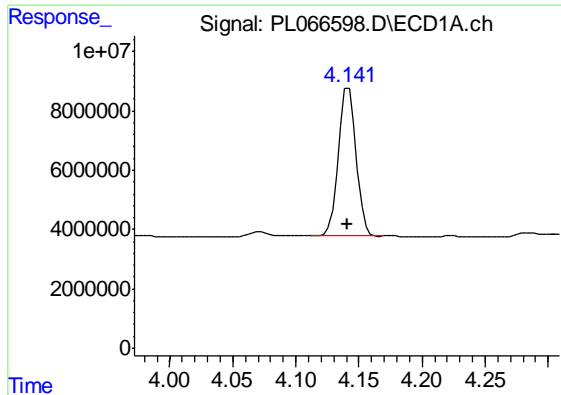
#2 alpha-BHC

R.T.: 3.862 min  
 Delta R.T.: 0.000 min  
 Response: 53414599  
 Conc: 8.58 ng/ml



#2 alpha-BHC

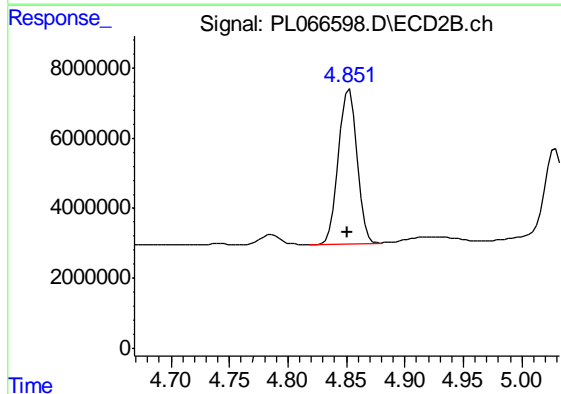
R.T.: 4.559 min  
 Delta R.T.: 0.001 min  
 Response: 56067733  
 Conc: 10.90 ng/ml



#3 gamma-BHC (Lindane)

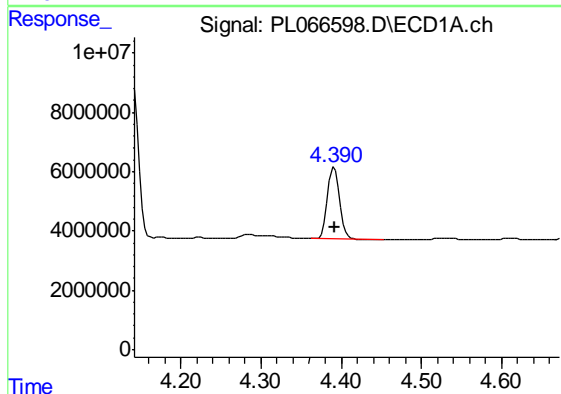
R.T.: 4.142 min  
 Delta R.T.: 0.000 min  
 Response: 48559443  
 Conc: 8.83 ng/ml

Instrument :  
 ECD\_L  
 ClientSampled :  
 PEM



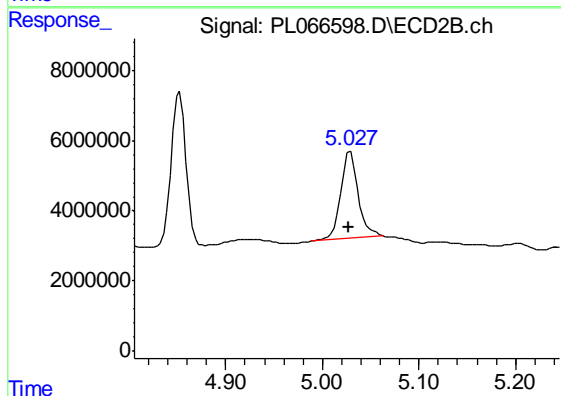
#3 gamma-BHC (Lindane)

R.T.: 4.852 min  
 Delta R.T.: 0.002 min  
 Response: 47167158  
 Conc: 9.78 ng/ml



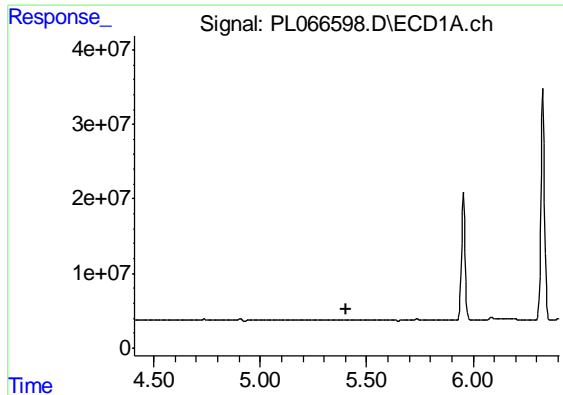
#6 beta-BHC

R.T.: 4.391 min  
 Delta R.T.: 0.000 min  
 Response: 24646740  
 Conc: 9.32 ng/ml



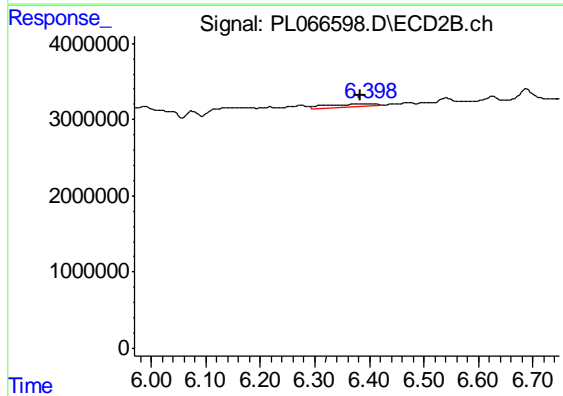
#6 beta-BHC

R.T.: 5.029 min  
 Delta R.T.: 0.000 min  
 Response: 30996832  
 Conc: 10.98 ng/ml

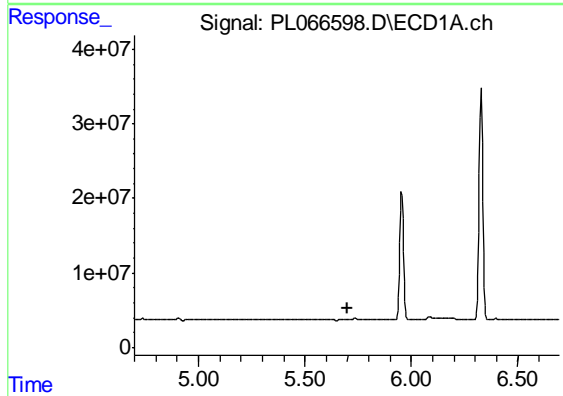


#11 alpha-Chlordane  
 R.T.: 0.000 min  
 Exp R.T. : 5.406 min  
 Response: 0  
 Conc: N.D.

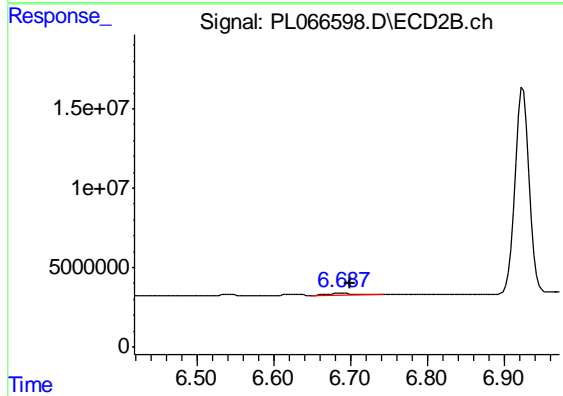
Instrument :  
 ECD\_L  
 ClientSampled :  
 PEM



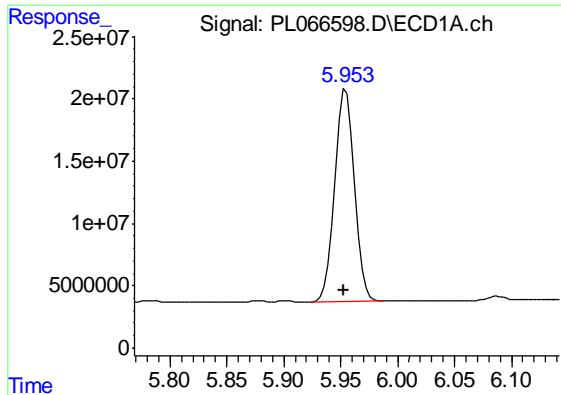
#11 alpha-Chlordane  
 R.T.: 6.399 min  
 Delta R.T.: 0.016 min  
 Response: 2251006  
 Conc: 0.54 ng/ml



#13 Dieldrin  
 R.T.: 0.000 min  
 Exp R.T. : 5.699 min  
 Response: 0  
 Conc: N.D.



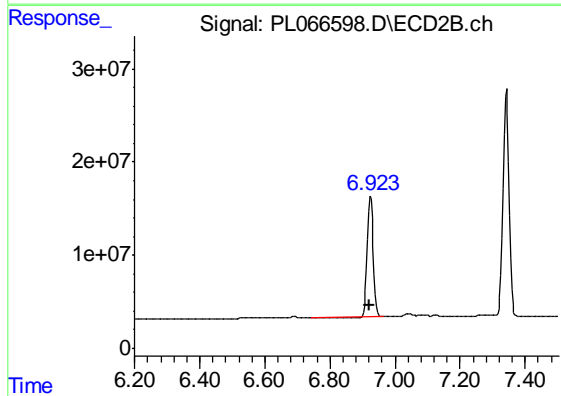
#13 Dieldrin  
 R.T.: 6.689 min  
 Delta R.T.: -0.010 min  
 Response: 2480043  
 Conc: 0.63 ng/ml



#14 Endrin

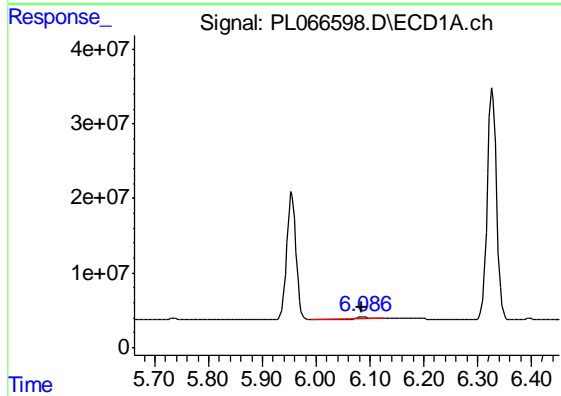
R.T.: 5.955 min  
 Delta R.T.: 0.003 min  
 Response: 202348317  
 Conc: 46.45 ng/ml

Instrument :  
 ECD\_L  
 ClientSampled :  
 PEM



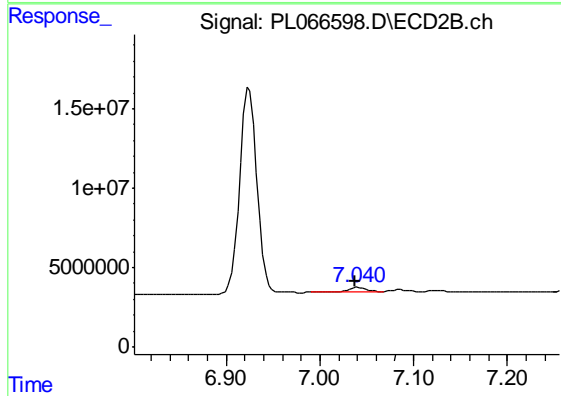
#14 Endrin

R.T.: 6.925 min  
 Delta R.T.: 0.003 min  
 Response: 161220732  
 Conc: 51.45 ng/ml



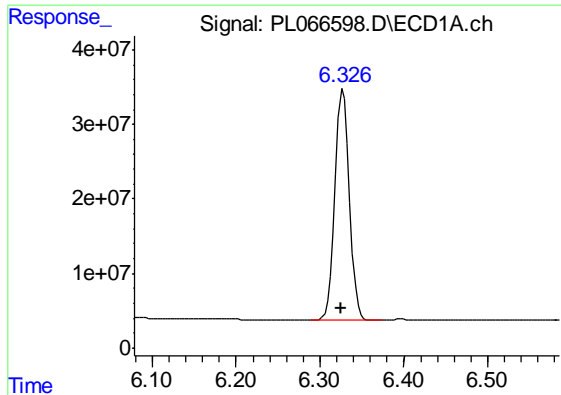
#16 4,4'-DDD

R.T.: 6.088 min  
 Delta R.T.: 0.003 min  
 Response: 3459880  
 Conc: 0.91 ng/ml



#16 4,4'-DDD

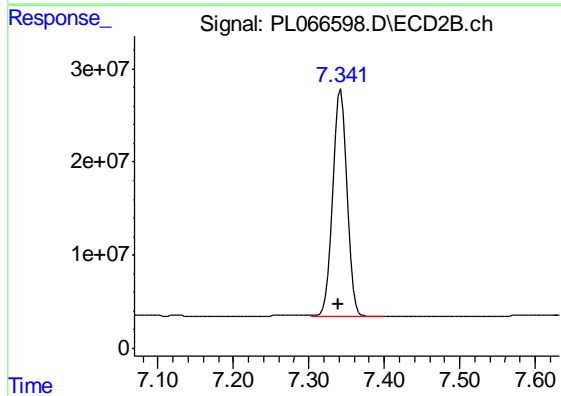
R.T.: 7.041 min  
 Delta R.T.: 0.003 min  
 Response: 4220331  
 Conc: 1.35 ng/ml



#17 4,4'-DDT

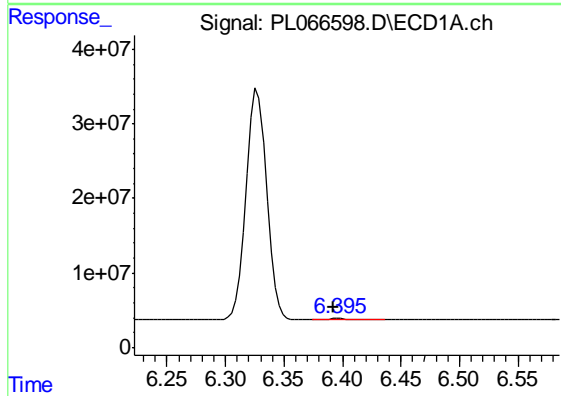
R.T.: 6.328 min  
 Delta R.T.: 0.003 min  
 Response: 368507757  
 Conc: 94.51 ng/ml

Instrument :  
 ECD\_L  
 ClientSampled :  
 PEM



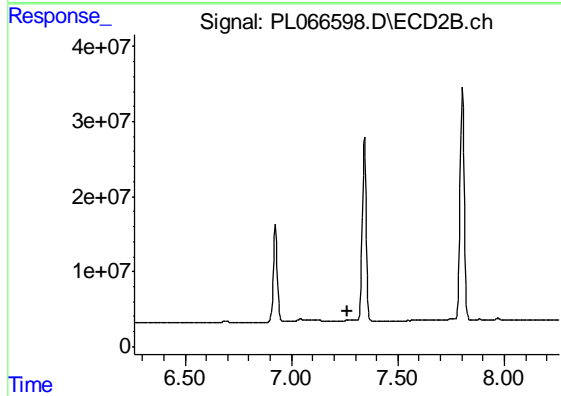
#17 4,4'-DDT

R.T.: 7.343 min  
 Delta R.T.: 0.003 min  
 Response: 315341918  
 Conc: 97.43 ng/ml



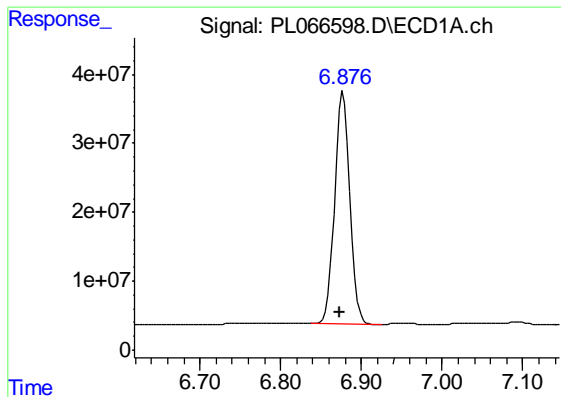
#18 Endrin aldehyde

R.T.: 6.397 min  
 Delta R.T.: 0.004 min  
 Response: 1585287  
 Conc: 0.47 ng/ml



#18 Endrin aldehyde

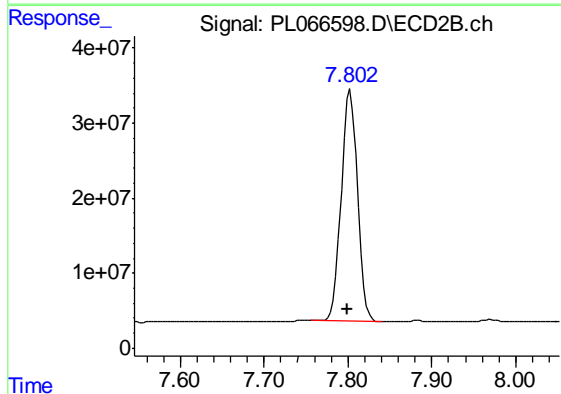
R.T.: 0.000 min  
 Exp R.T. : 7.261 min  
 Response: 0  
 Conc: N.D.



#20 Methoxychlor

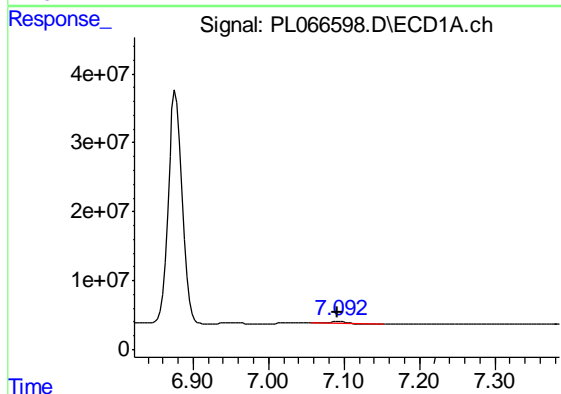
R.T.: 6.877 min  
 Delta R.T.: 0.003 min  
 Response: 446077906  
 Conc: 227.09 ng/ml

Instrument :  
 ECD\_L  
 ClientSampled :  
 PEM



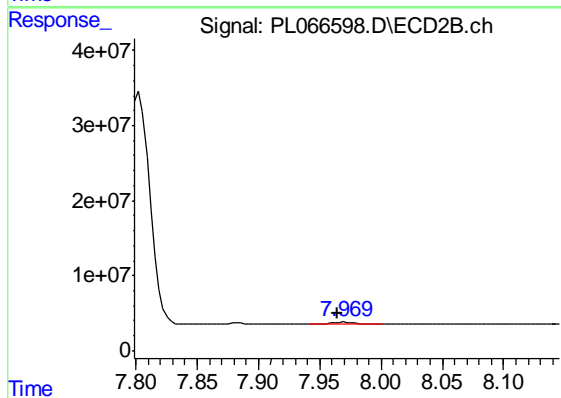
#20 Methoxychlor

R.T.: 7.803 min  
 Delta R.T.: 0.004 min  
 Response: 413478166  
 Conc: 230.51 ng/ml



#21 Endrin ketone

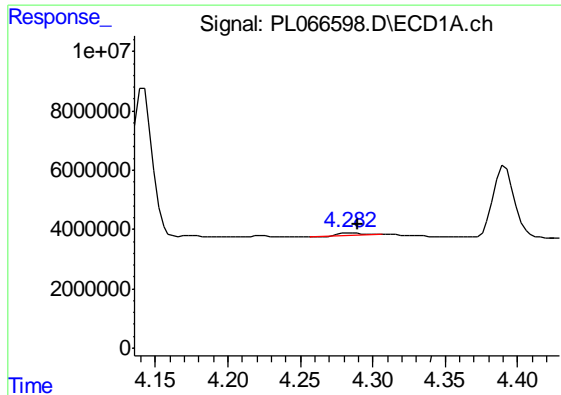
R.T.: 7.093 min  
 Delta R.T.: 0.003 min  
 Response: 3403691  
 Conc: 0.78 ng/ml



#21 Endrin ketone

R.T.: 7.971 min  
 Delta R.T.: 0.006 min  
 Response: 3794211  
 Conc: 1.07 ng/ml

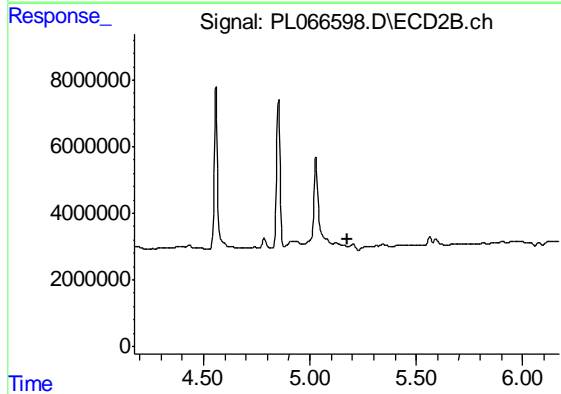




#23 Chlordane-1

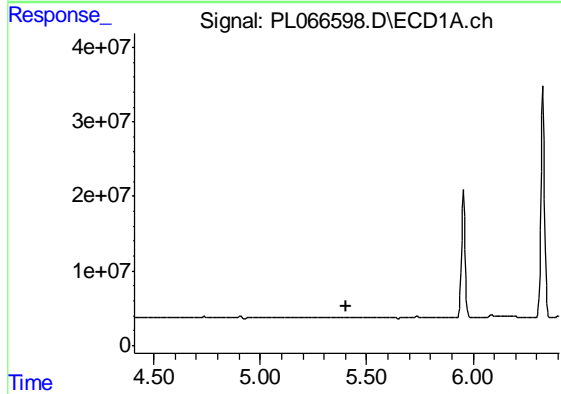
R.T.: 4.284 min  
 Delta R.T.: -0.006 min  
 Response: 1059958  
 Conc: 6.27 ng/ml

Instrument :  
 ECD\_L  
 ClientSampled :  
 PEM



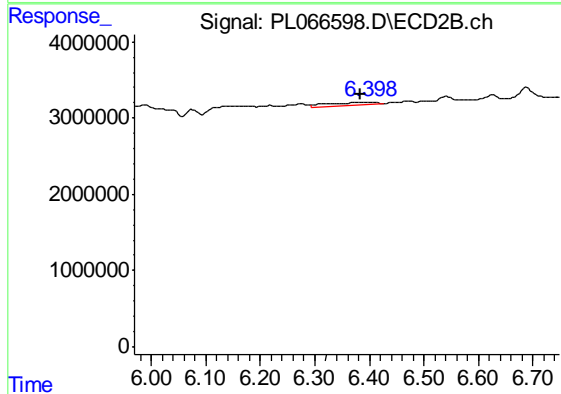
#23 Chlordane-1

R.T.: 0.000 min  
 Exp R.T. : 5.174 min  
 Response: 0  
 Conc: N.D.



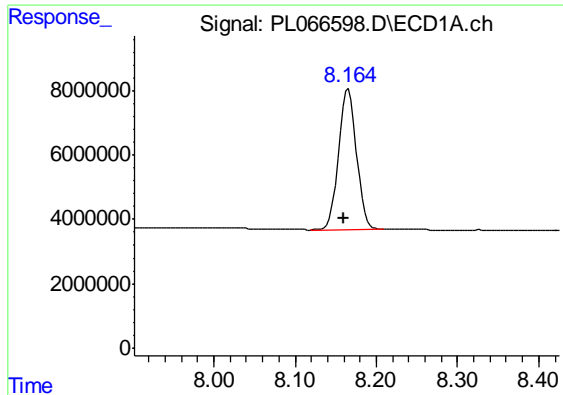
#26 Chlordane-4

R.T.: 0.000 min  
 Exp R.T. : 5.407 min  
 Response: 0  
 Conc: N.D.



#26 Chlordane-4

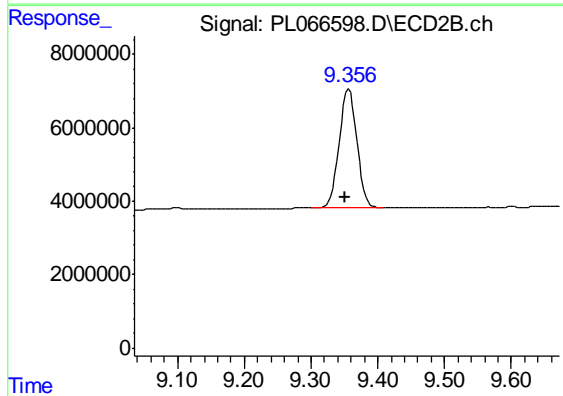
R.T.: 6.399 min  
 Delta R.T.: 0.015 min  
 Response: 2251006  
 Conc: 3.35 ng/ml



#28 Decachlorobiphenyl

R.T.: 8.166 min  
Delta R.T.: 0.007 min  
Response: 67559465  
Conc: 17.62 ng/ml

Instrument :  
ECD\_L  
ClientSampleId :  
PEM



#28 Decachlorobiphenyl

R.T.: 9.357 min  
Delta R.T.: 0.005 min  
Response: 59199808  
Conc: 19.14 ng/ml