

Data Path : Z:\pestpcbsrv\HPCHEM1\ECD_L\Data\PL043025\
 Data File : PL095446.D
 Signal(s) : Signal #1: ECD1A.ch Signal #2: ECD2B.ch
 Acq On : 28 Apr 2025 17:49
 Operator : AR\AJ
 Sample : Q1889-02
 Misc :
 ALS Vial : 10 Sample Multiplier: 1

Instrument :
 ECD_L
 ClientSampleId :
 COMP-2

Integration File signal 1: autoint1.e
 Integration File signal 2: autoint2.e
 Quant Time: Apr 29 01:36:05 2025
 Quant Method : Z:\pestpcbsrv\HPCHEM1\ECD_L\methods\PL042325.M
 Quant Title : GC Extractables
 QLast Update : Wed Apr 23 16:23:18 2025
 Response via : Initial Calibration
 Integrator: ChemStation

Volume Inj. : 1 µl
 Signal #1 Phase : ZB-MR1 Signal #2 Phase: ZB-MR2
 Signal #1 Info : 30M x 0.32mm x0.5 Signal #2 Info : 30M x 0.32mm x0.25µm

Compound	RT#1	RT#2	Resp#1	Resp#2	ng/ml	ng/ml

System Monitoring Compounds						
1) SA Tetrachlo...	3.593	2.904	64120802	65010204	19.641	20.445
28) SA Decachlor...	9.115	8.082	55780367	59478822	20.131	20.099

Target Compounds

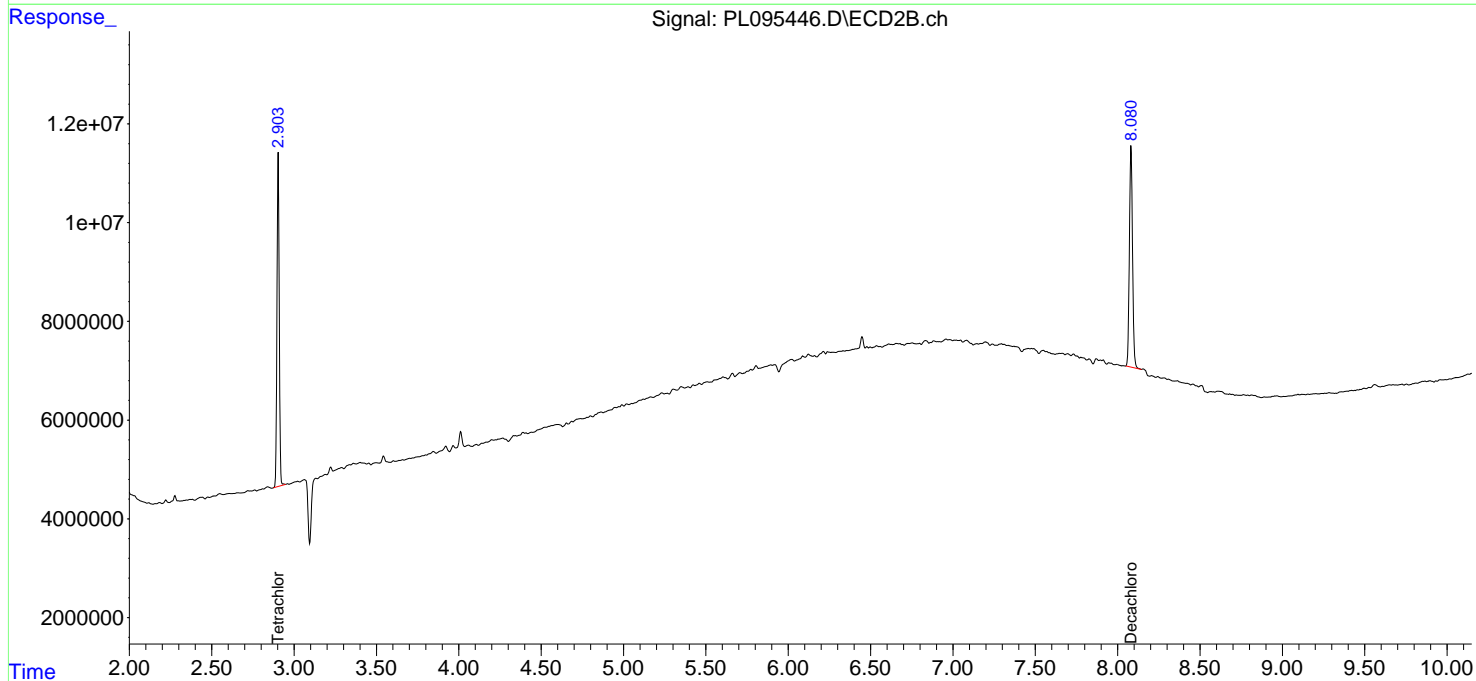
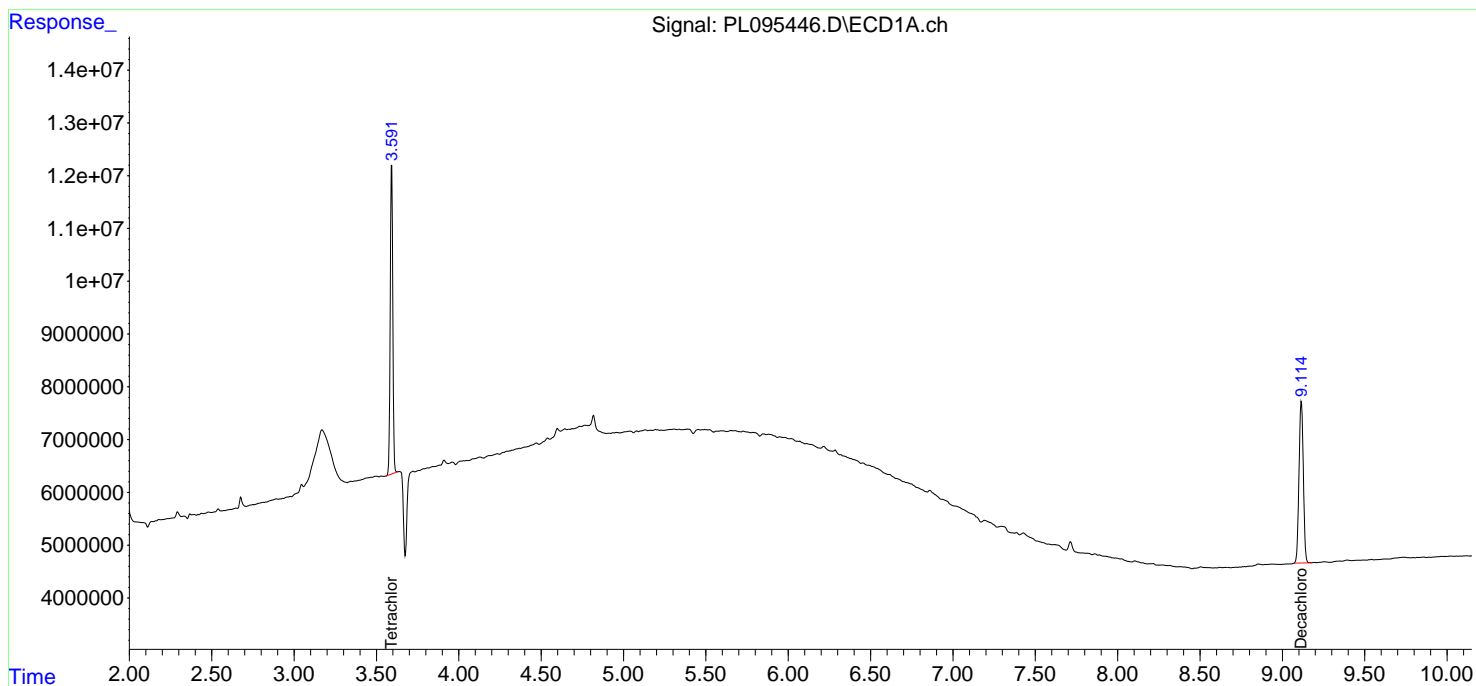
(f)=RT Delta > 1/2 Window (#)=Amounts differ by > 25% (m)=manual int.

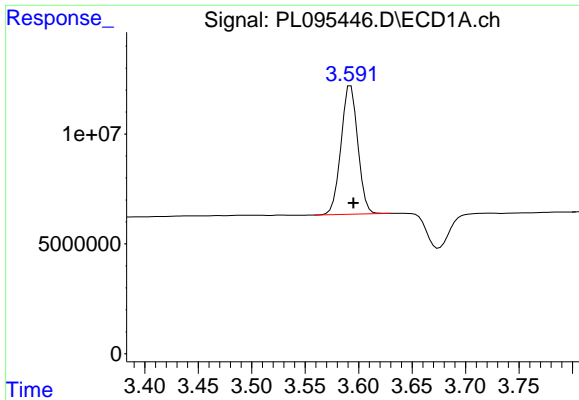
Data Path : Z:\pestpcbsrv\HPCHEM1\ECD_L\Data\PL043025\
 Data File : PL095446.D
 Signal(s) : Signal #1: ECD1A.ch Signal #2: ECD2B.ch
 Acq On : 28 Apr 2025 17:49
 Operator : AR\AJ
 Sample : Q1889-02
 Misc :
 ALS Vial : 10 Sample Multiplier: 1

Instrument :
 ECD_L
 ClientSampleId :
 COMP-2

Integration File signal 1: autoint1.e
 Integration File signal 2: autoint2.e
 Quant Time: Apr 29 01:36:05 2025
 Quant Method : Z:\pestpcbsrv\HPCHEM1\ECD_L\methods\PL042325.M
 Quant Title : GC Extractables
 QLast Update : Wed Apr 23 16:23:18 2025
 Response via : Initial Calibration
 Integrator: ChemStation

Volume Inj. : 1 µl
 Signal #1 Phase : ZB-MR1 Signal #2 Phase: ZB-MR2
 Signal #1 Info : 30M x 0.32mm x0.5 Signal #2 Info : 30M x 0.32mm x0.25µm

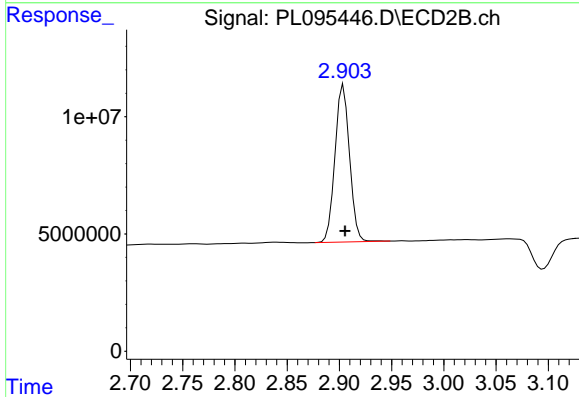




#1 Tetrachloro-m-xylene

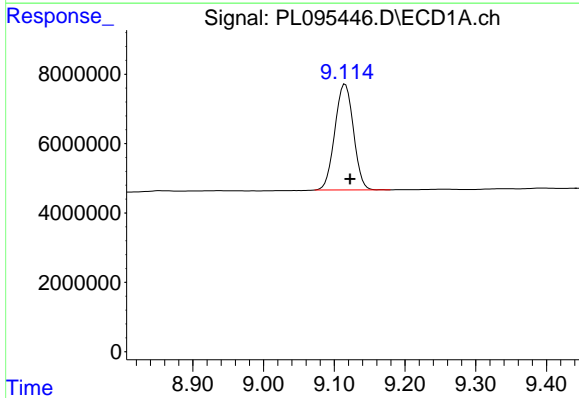
R.T.: 3.593 min
 Delta R.T.: -0.002 min
 Response: 64120802
 Conc: 19.64 ng/ml

Instrument :
 ECD_L
 ClientSampleId :
 COMP-2



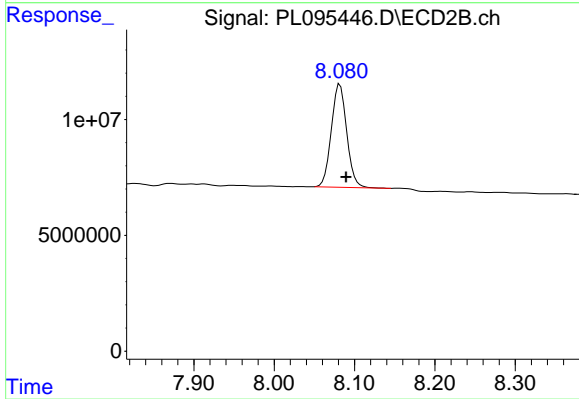
#1 Tetrachloro-m-xylene

R.T.: 2.904 min
 Delta R.T.: -0.002 min
 Response: 65010204
 Conc: 20.45 ng/ml



#28 Decachlorobiphenyl

R.T.: 9.115 min
 Delta R.T.: -0.007 min
 Response: 55780367
 Conc: 20.13 ng/ml



#28 Decachlorobiphenyl

R.T.: 8.082 min
 Delta R.T.: -0.008 min
 Response: 59478822
 Conc: 20.10 ng/ml