

Data Path : Z:\pestpcbsrv\HPCHEM1\ECD_L\Data\PL050124\
 Data File : PL089295.D
 Signal(s) : Signal #1: ECD1A.ch Signal #2: ECD2B.ch
 Acq On : 01 May 2024 10:51
 Operator : AR\AJ
 Sample : P2307-08DL 2X
 Misc :
 ALS Vial : 5 Sample Multiplier: 1

Instrument :
 ECD_L
 ClientSampleId :
 WC-3DL

Integration File signal 1: autoint1.e
 Integration File signal 2: autoint2.e
 Quant Time: May 01 22:32:19 2024
 Quant Method : Z:\pestpcbsrv\HPCHEM1\ECD_L\methods\PL042624.M
 Quant Title : GC Extractables
 QLast Update : Fri Apr 26 19:27:30 2024
 Response via : Initial Calibration
 Integrator: ChemStation

Volume Inj. : 1 µl
 Signal #1 Phase : ZB-MR2 Signal #2 Phase: ZB-MR1
 Signal #1 Info : 30M x 0.32mm x0.2 Signal #2 Info : 30M x 0.32mm x0.5µm

Compound	RT#1	RT#2	Resp#1	Resp#2	ng/ml	ng/ml
System Monitoring Compounds						
1) SA Tetrachlo...	3.556	2.798	16631418	9298253	8.259	7.247
28) SA Decachlor...	9.071	7.951	9325114	9597007	6.665	7.134
Target Compounds						
2) A alpha-BHC	4.013	3.302	1778154	506472	0.624	0.268 #
3) MA gamma-BHC...	4.344	3.633	4780945	547361	1.717	0.297 #
4) MA Heptachlor	4.934	3.976	8537974	4104581	3.443	2.342 #
5) MB Aldrin	5.245f	4.259	38389212	652065	14.948	0.369 #
6) B beta-BHC	4.545	3.934	599996	250684	0.476	0.307 #
7) B delta-BHC	4.795f	4.160	3095855	1126154	1.167	0.626 #
8) B Heptachlo...	5.685	4.763	7754432	-276180	3.306	N.D. #
9) A Endosulfan I	0.000	5.114f	0	1818955	N.D.	1.215 #
10) B gamma-Chl...	5.958	5.012	69227692	33772456	30.285	20.581 #
11) B alpha-Chl...	6.039	5.075	154.6E6	80368577	67.953	48.732 #
12) B 4,4'-DDE	6.201	5.264	4920394	-203747	2.432	N.D. #
13) MA Dieldrin	6.360	5.398	1802582	2307083	0.805	1.434 #
14) MA Endrin	6.592	5.677	3248830	1533979	1.715	1.067 #
15) B Endosulfa...	6.808	5.971	5097527	23214222	2.554	16.140 #
16) A 4,4'-DDD	6.739f	5.807	9643937	1834965	5.717	1.488 #
17) MA 4,4'-DDT	7.038	6.069	6171548	5029311	3.356	3.717
19) B Endosulfa...	7.177	6.367	4018354	1197874	2.221	0.864 #
20) A Methoxychlor	7.513	6.646	3673771	1953101	3.736	2.443 #
21) B Endrin ke...	7.658	6.876	1528171	648623	0.763	0.406 #
22) Mirex	8.103f	0.000	38129	0	0.025	N.D. #
23) Chlordane-1	4.719	3.801	23860715	16246433	261.342	330.200 #
24) Chlordane-2	5.245	4.383	38389212	25384888	365.284	399.039
25) Chlordane-3	5.958	5.012	69227692	33772456	209.617	197.245
26) Chlordane-4	6.039	5.075	154.6E6	80368577	379.209	499.666 #
27) Chlordane-5	6.888	5.741	-3171347	3574800	N.D.	69.850

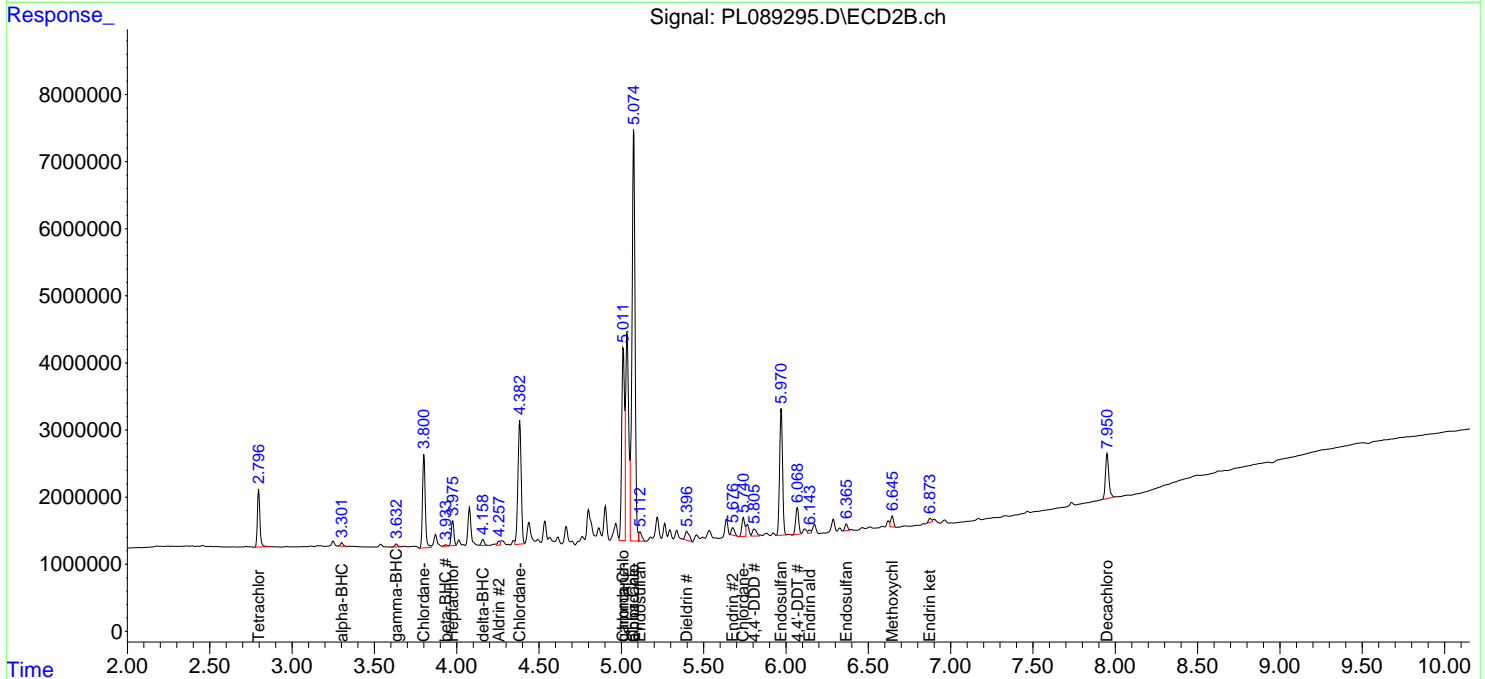
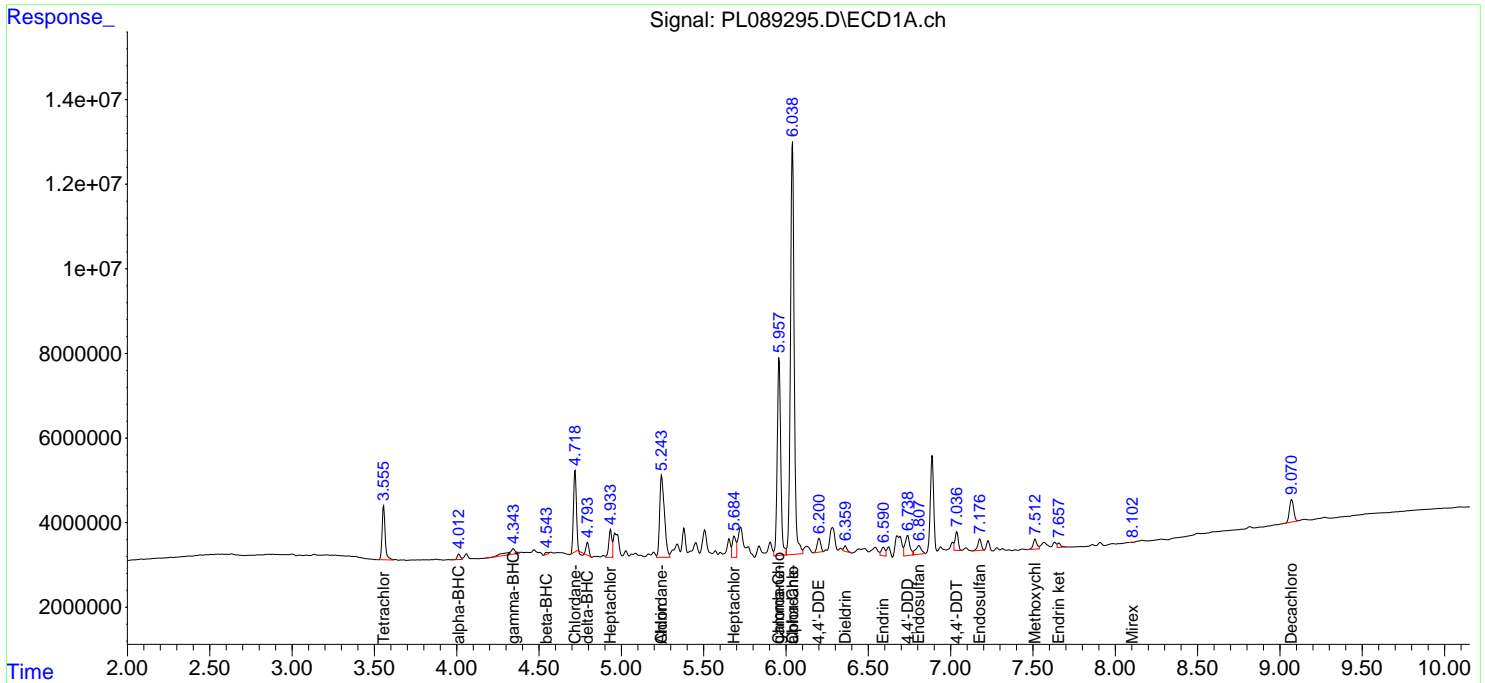
(f)=RT Delta > 1/2 Window (#)=Amounts differ by > 25% (m)=manual int.

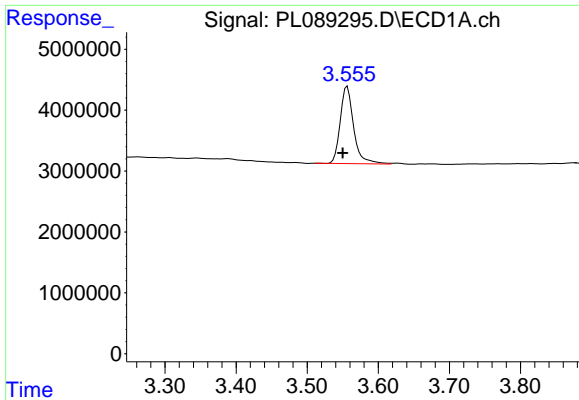
Data Path : Z:\pestpcbsrv\HPCHEM1\ECD_L\Data\PL050124\
 Data File : PL089295.D
 Signal(s) : Signal #1: ECD1A.ch Signal #2: ECD2B.ch
 Acq On : 01 May 2024 10:51
 Operator : AR\AJ
 Sample : P2307-08DL 2X
 Misc :
 ALS Vial : 5 Sample Multiplier: 1

Instrument :
 ECD_L
ClientSampleId :
 WC-3DL

Integration File signal 1: autoint1.e
 Integration File signal 2: autoint2.e
 Quant Time: May 01 22:32:19 2024
 Quant Method : Z:\pestpcbsrv\HPCHEM1\ECD_L\methods\PL042624.M
 Quant Title : GC Extractables
 QLast Update : Fri Apr 26 19:27:30 2024
 Response via : Initial Calibration
 Integrator: ChemStation

Volume Inj. : 1 µl
 Signal #1 Phase : ZB-MR2 Signal #2 Phase: ZB-MR1
 Signal #1 Info : 30M x 0.32mm x0.2 Signal #2 Info : 30M x 0.32mm x0.5µm

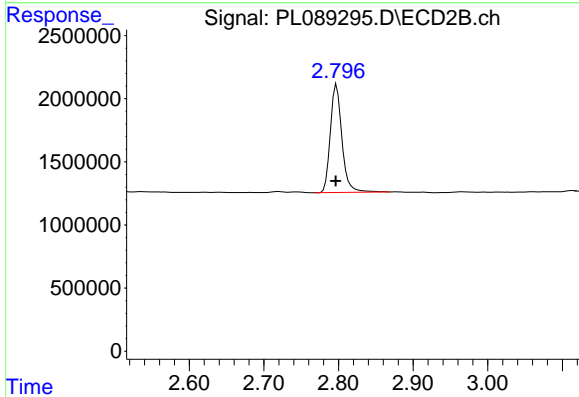




#1 Tetrachloro-m-xylene

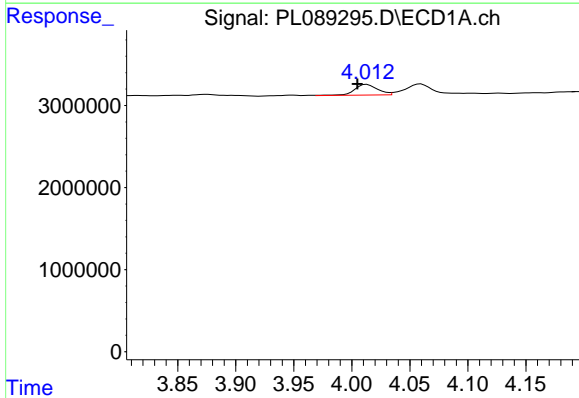
R.T.: 3.556 min
 Delta R.T.: 0.006 min
 Response: 16631418
 Conc: 8.26 ng/ml

Instrument :
 ECD_L
 ClientSampleId :
 WC-3DL



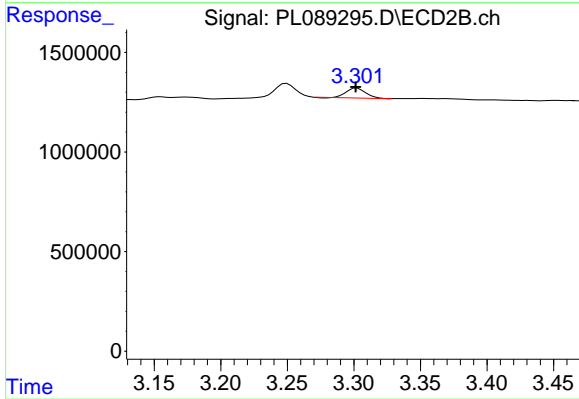
#1 Tetrachloro-m-xylene

R.T.: 2.798 min
 Delta R.T.: 0.001 min
 Response: 9298253
 Conc: 7.25 ng/ml



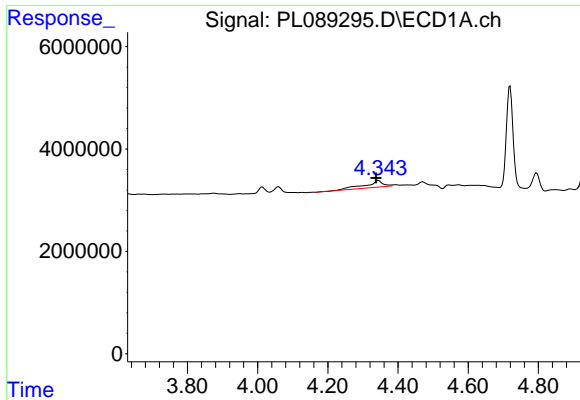
#2 alpha-BHC

R.T.: 4.013 min
 Delta R.T.: 0.008 min
 Response: 1778154
 Conc: 0.62 ng/ml



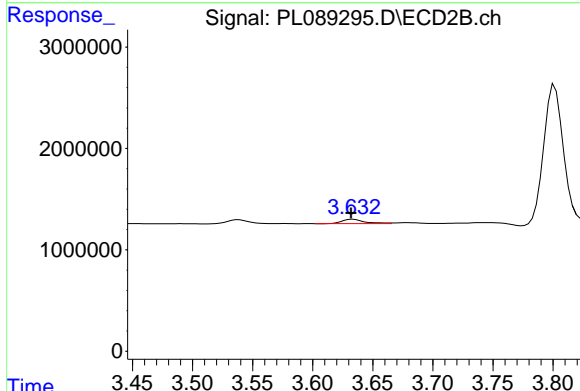
#2 alpha-BHC

R.T.: 3.302 min
 Delta R.T.: 0.001 min
 Response: 506472
 Conc: 0.27 ng/ml

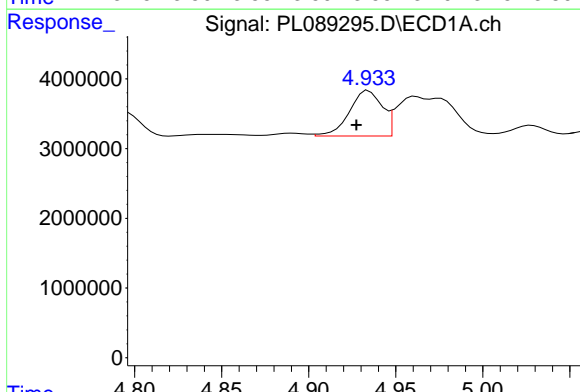


#3 gamma-BHC (Lindane)
 R.T.: 4.344 min
 Delta R.T.: 0.007 min
 Response: 4780945
 Conc: 1.72 ng/ml

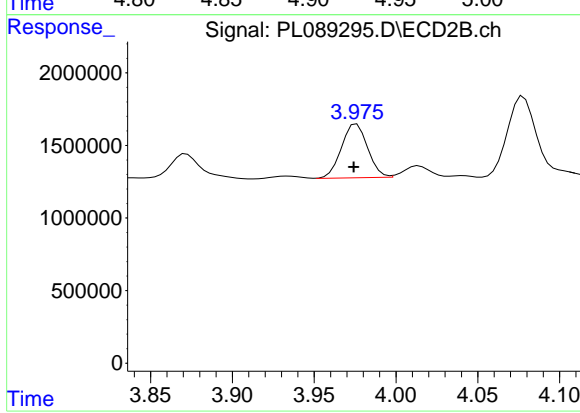
Instrument : ECD_L
 ClientSampleId : WC-3DL



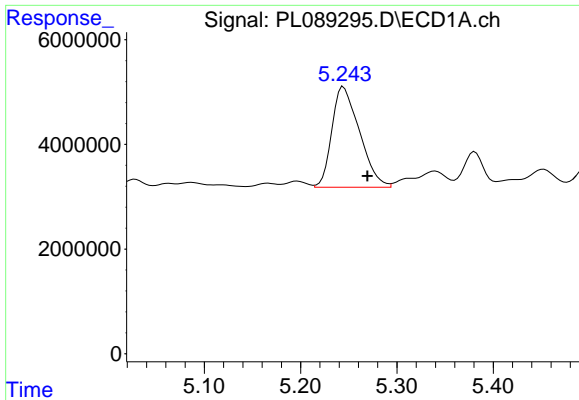
#3 gamma-BHC (Lindane)
 R.T.: 3.633 min
 Delta R.T.: 0.001 min
 Response: 547361
 Conc: 0.30 ng/ml



#4 Heptachlor
 R.T.: 4.934 min
 Delta R.T.: 0.007 min
 Response: 8537974
 Conc: 3.44 ng/ml

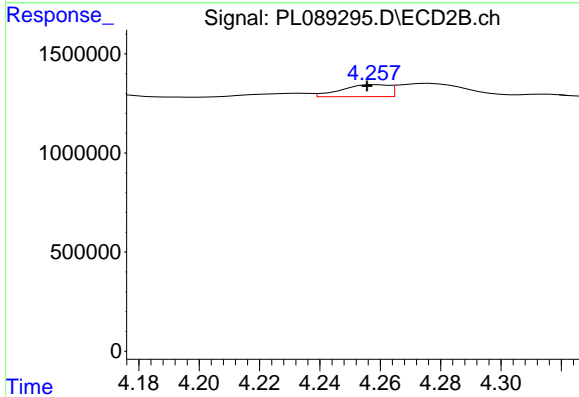


#4 Heptachlor
 R.T.: 3.976 min
 Delta R.T.: 0.002 min
 Response: 4104581
 Conc: 2.34 ng/ml

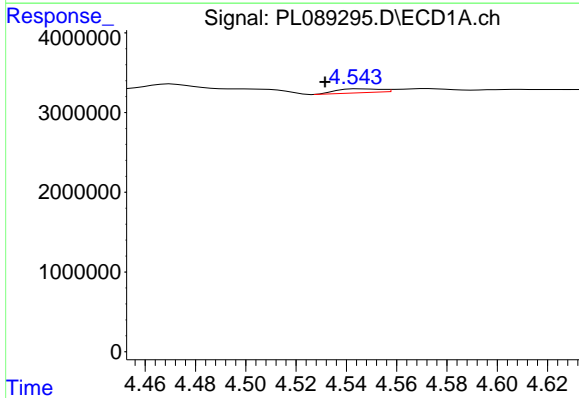


#5 Aldrin
 R.T.: 5.245 min
 Delta R.T.: -0.025 min
 Response: 38389212
 Conc: 14.95 ng/ml

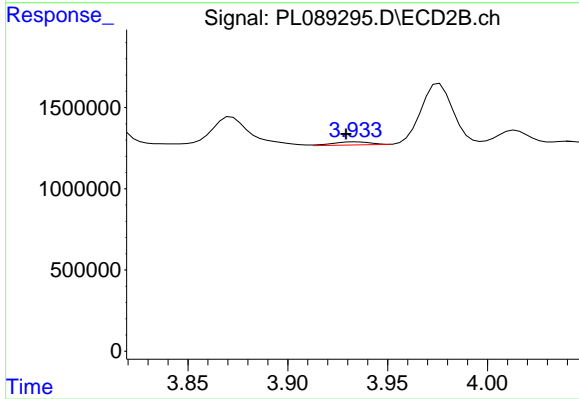
Instrument :
 ECD_L
 ClientSampleId :
 WC-3DL



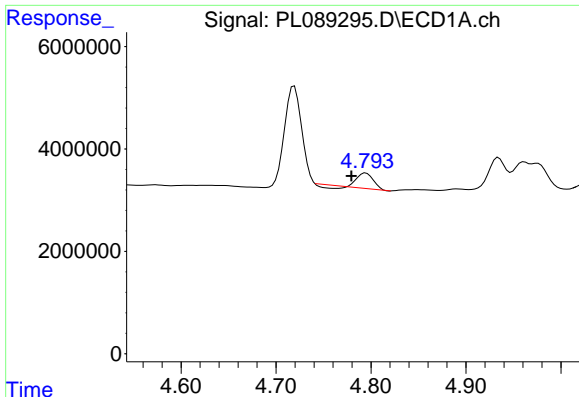
#5 Aldrin
 R.T.: 4.259 min
 Delta R.T.: 0.003 min
 Response: 652065
 Conc: 0.37 ng/ml



#6 beta-BHC
 R.T.: 4.545 min
 Delta R.T.: 0.014 min
 Response: 599996
 Conc: 0.48 ng/ml



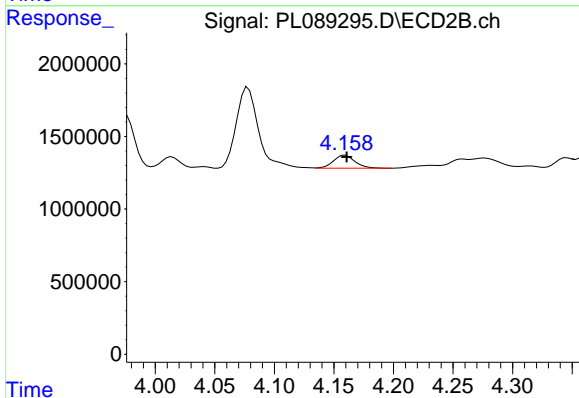
#6 beta-BHC
 R.T.: 3.934 min
 Delta R.T.: 0.005 min
 Response: 250684
 Conc: 0.31 ng/ml



#7 delta-BHC

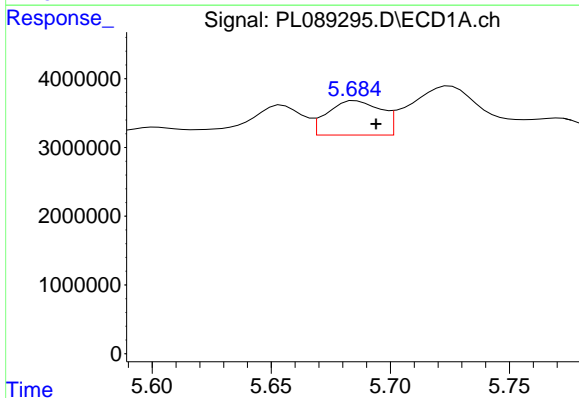
R.T.: 4.795 min
 Delta R.T.: 0.015 min
 Response: 3095855
 Conc: 1.17 ng/ml

Instrument :
 ECD_L
 ClientSampleId :
 WC-3DL



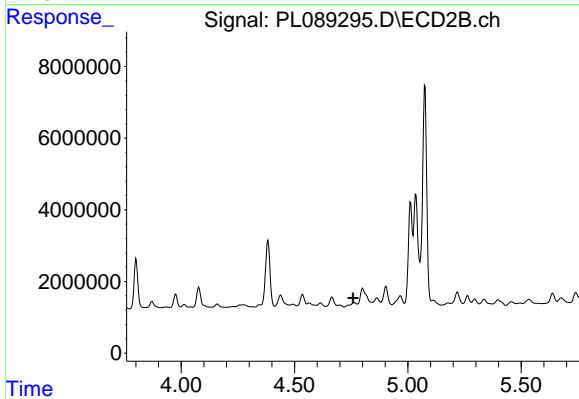
#7 delta-BHC

R.T.: 4.160 min
 Delta R.T.: -0.001 min
 Response: 1126154
 Conc: 0.63 ng/ml



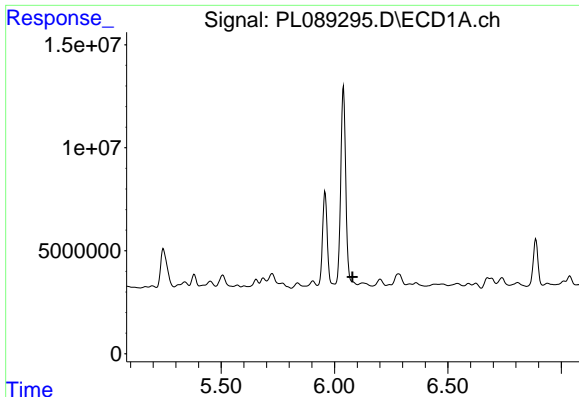
#8 Heptachlor epoxide

R.T.: 5.685 min
 Delta R.T.: -0.009 min
 Response: 7754432
 Conc: 3.31 ng/ml



#8 Heptachlor epoxide

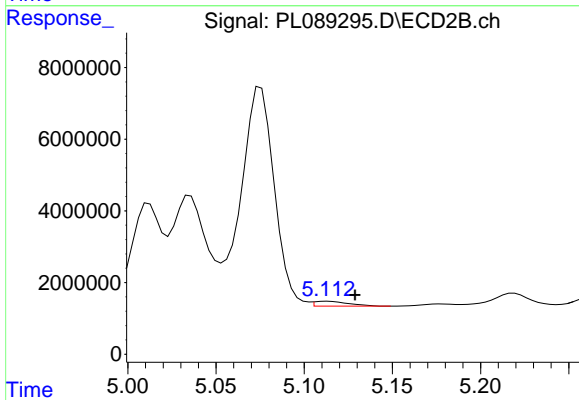
R.T.: 4.763 min
 Delta R.T.: 0.005 min
 Response: -276180
 Conc: N.D.



#9 Endosulfan I

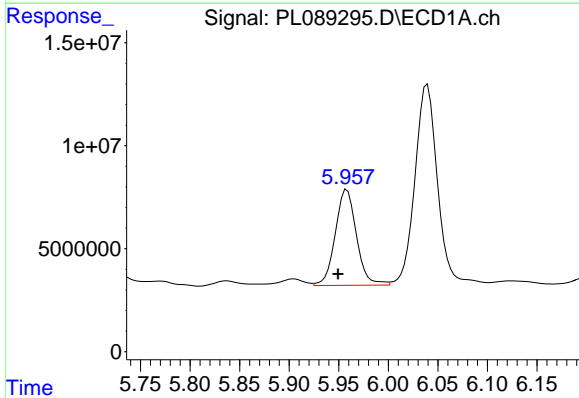
R.T.: 0.000 min
 Exp R.T.: 6.079 min
 Response: 0
 Conc: N.D.

Instrument :
 ECD_L
 ClientSampleId :
 WC-3DL



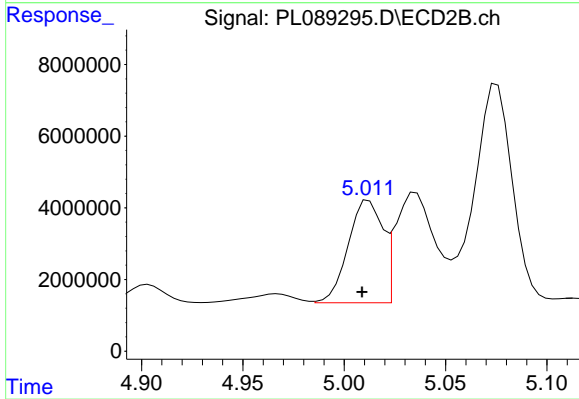
#9 Endosulfan I

R.T.: 5.114 min
 Delta R.T.: -0.015 min
 Response: 1818955
 Conc: 1.21 ng/ml



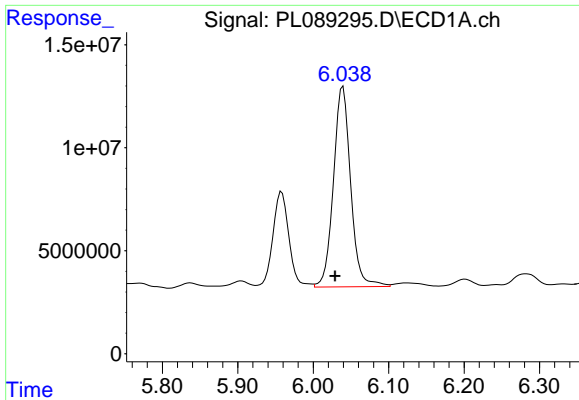
#10 gamma-Chlordane

R.T.: 5.958 min
 Delta R.T.: 0.009 min
 Response: 69227692
 Conc: 30.28 ng/ml



#10 gamma-Chlordane

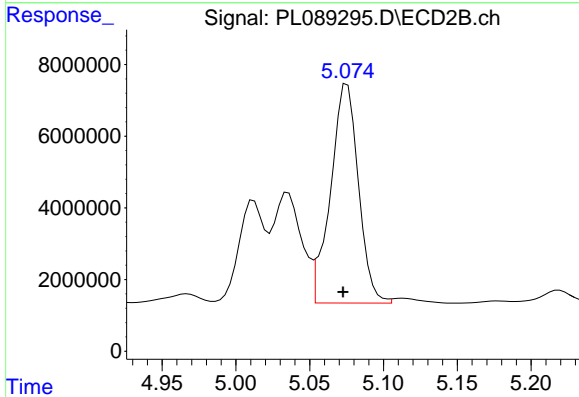
R.T.: 5.012 min
 Delta R.T.: 0.003 min
 Response: 33772456
 Conc: 20.58 ng/ml



#11 alpha-Chlordane

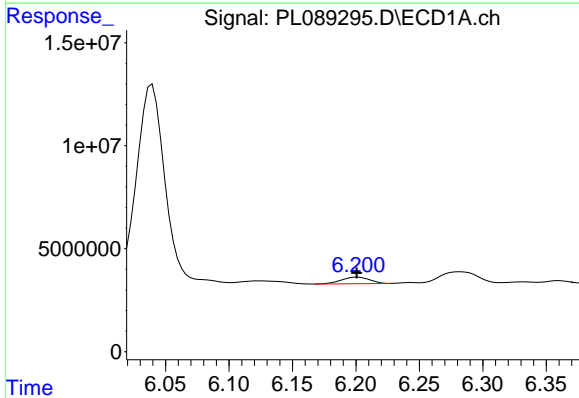
R.T.: 6.039 min
 Delta R.T.: 0.010 min
 Response: 154574810
 Conc: 67.95 ng/ml

Instrument :
 ECD_L
 ClientSampleId :
 WC-3DL



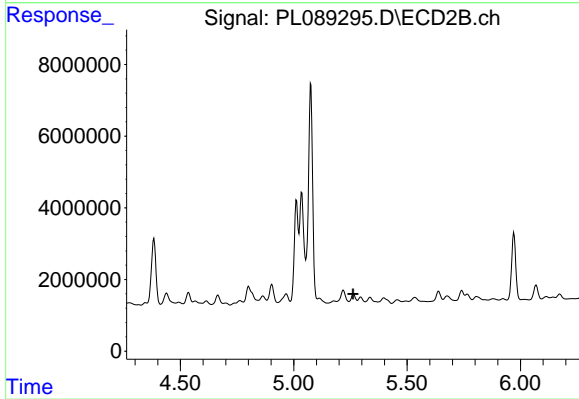
#11 alpha-Chlordane

R.T.: 5.075 min
 Delta R.T.: 0.003 min
 Response: 80368577
 Conc: 48.73 ng/ml



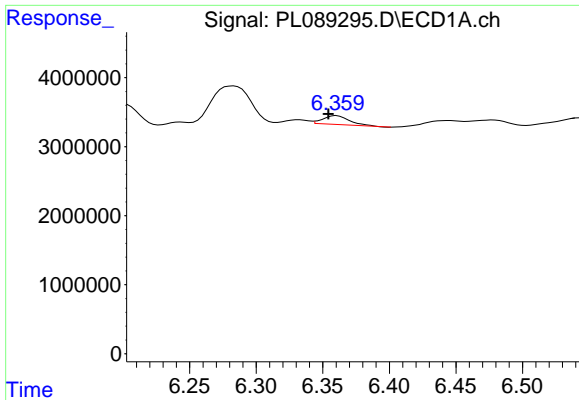
#12 4,4'-DDE

R.T.: 6.201 min
 Delta R.T.: 0.000 min
 Response: 4920394
 Conc: 2.43 ng/ml



#12 4,4'-DDE

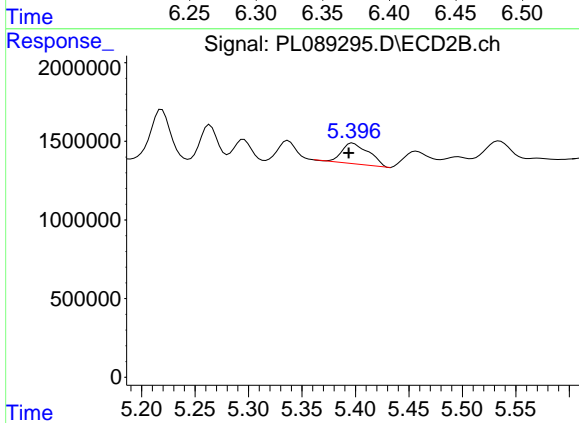
R.T.: 5.264 min
 Delta R.T.: 0.002 min
 Response: -203747
 Conc: N.D.



#13 Dieldrin

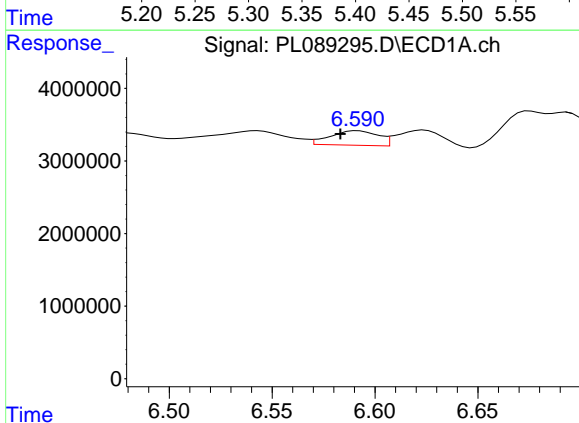
R.T.: 6.360 min
 Delta R.T.: 0.006 min
 Response: 1802582
 Conc: 0.81 ng/ml

Instrument :
 ECD_L
 ClientSampleId :
 WC-3DL



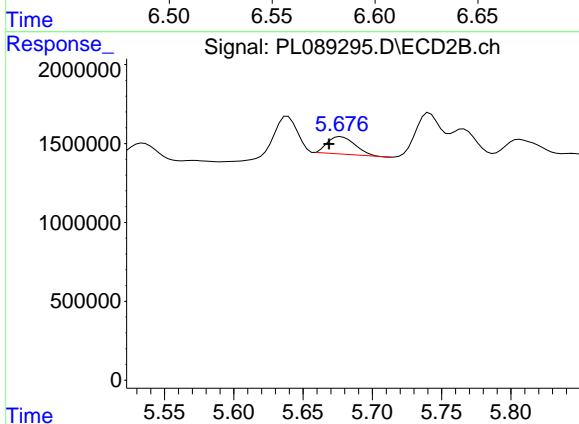
#13 Dieldrin

R.T.: 5.398 min
 Delta R.T.: 0.004 min
 Response: 2307083
 Conc: 1.43 ng/ml



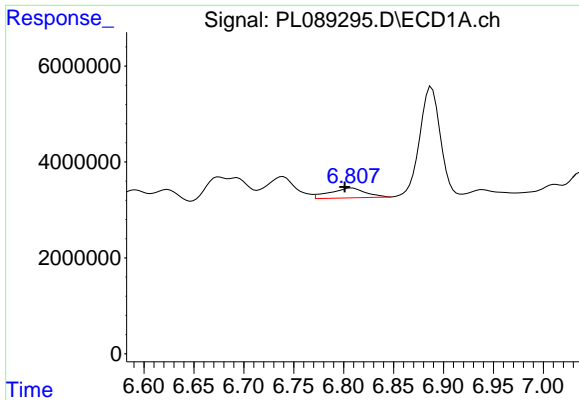
#14 Endrin

R.T.: 6.592 min
 Delta R.T.: 0.008 min
 Response: 3248830
 Conc: 1.72 ng/ml



#14 Endrin

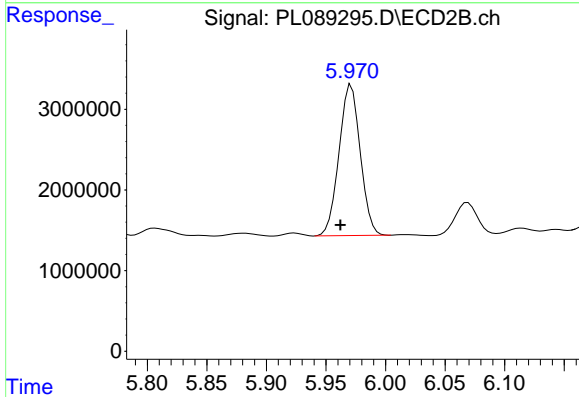
R.T.: 5.677 min
 Delta R.T.: 0.009 min
 Response: 1533979
 Conc: 1.07 ng/ml



#15 Endosulfan II

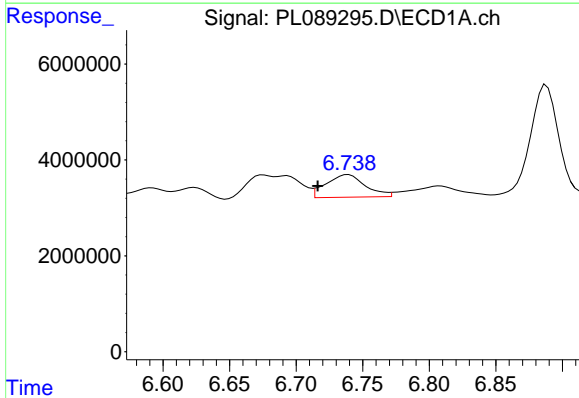
R.T.: 6.808 min
 Delta R.T.: 0.007 min
 Response: 5097527
 Conc: 2.55 ng/ml

Instrument :
 ECD_L
 ClientSampleId :
 WC-3DL



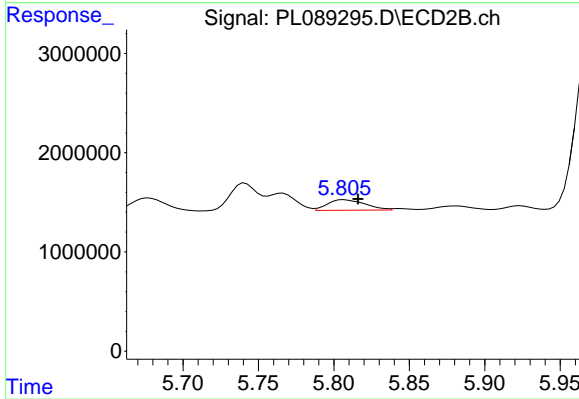
#15 Endosulfan II

R.T.: 5.971 min
 Delta R.T.: 0.009 min
 Response: 23214222
 Conc: 16.14 ng/ml



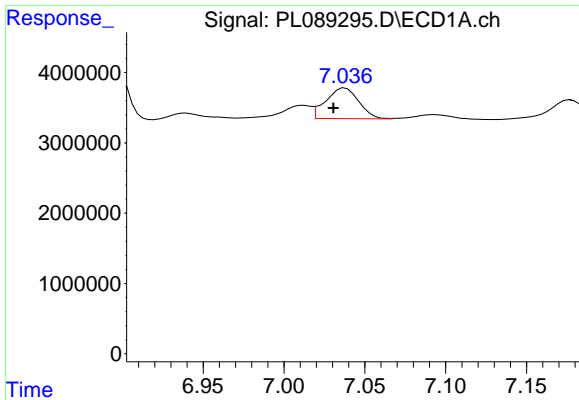
#16 4,4'-DDD

R.T.: 6.739 min
 Delta R.T.: 0.023 min
 Response: 9643937
 Conc: 5.72 ng/ml



#16 4,4'-DDD

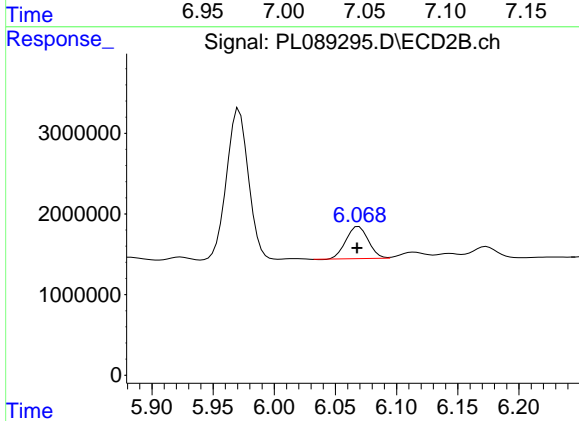
R.T.: 5.807 min
 Delta R.T.: -0.009 min
 Response: 1834965
 Conc: 1.49 ng/ml



#17 4,4'-DDT

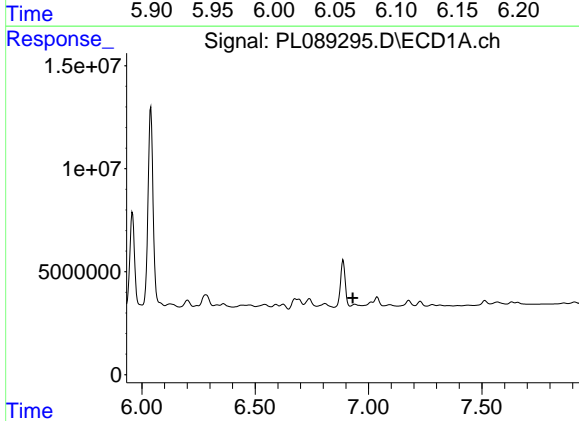
R.T.: 7.038 min
 Delta R.T.: 0.007 min
 Response: 6171548
 Conc: 3.36 ng/ml

Instrument :
 ECD_L
 ClientSampleId :
 WC-3DL



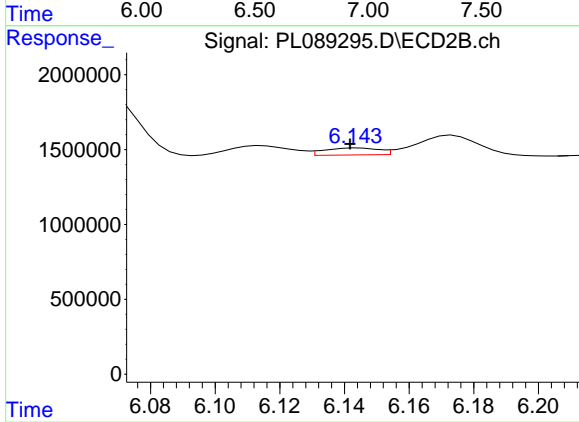
#17 4,4'-DDT

R.T.: 6.069 min
 Delta R.T.: 0.001 min
 Response: 5029311
 Conc: 3.72 ng/ml



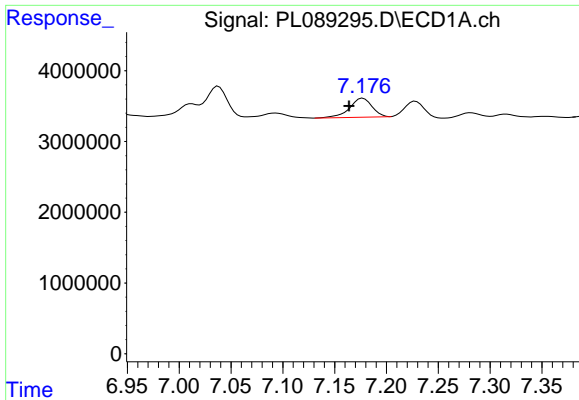
#18 Endrin aldehyde

R.T.: 6.940 min
 Delta R.T.: 0.009 min
 Response: -10733692
 Conc: N.D.



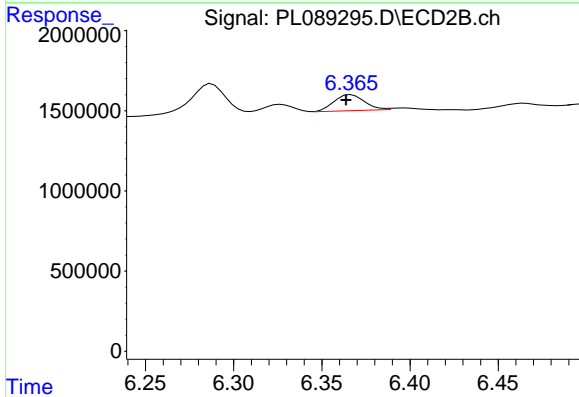
#18 Endrin aldehyde

R.T.: 6.144 min
 Delta R.T.: 0.002 min
 Response: 540200
 Conc: 0.49 ng/ml

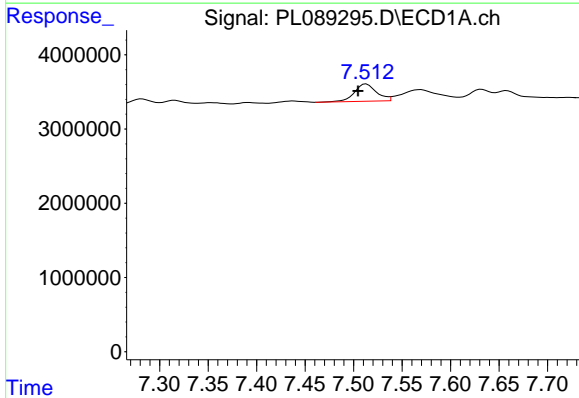


#19 Endosulfan Sulfate
 R.T.: 7.177 min
 Delta R.T.: 0.013 min
 Response: 4018354
 Conc: 2.22 ng/ml

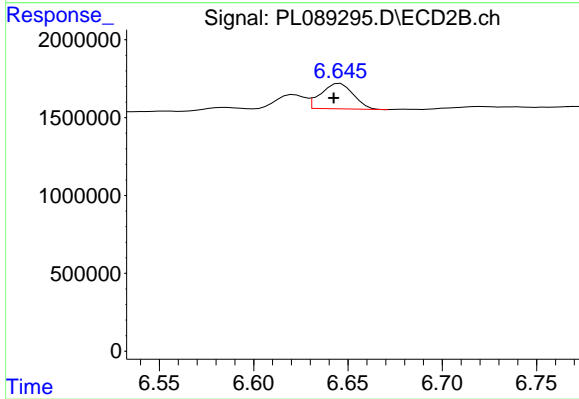
Instrument :
 ECD_L
 ClientSampleId :
 WC-3DL



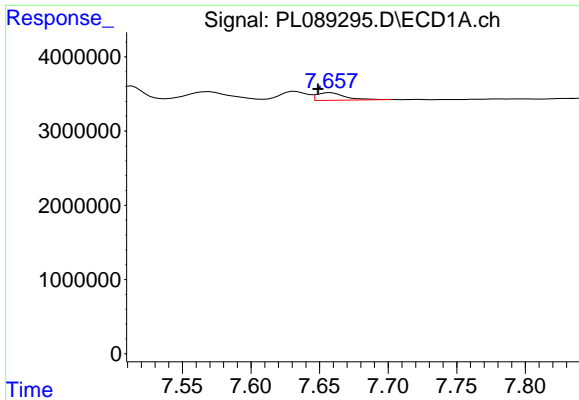
#19 Endosulfan Sulfate
 R.T.: 6.367 min
 Delta R.T.: 0.003 min
 Response: 1197874
 Conc: 0.86 ng/ml



#20 Methoxychlor
 R.T.: 7.513 min
 Delta R.T.: 0.009 min
 Response: 3673771
 Conc: 3.74 ng/ml



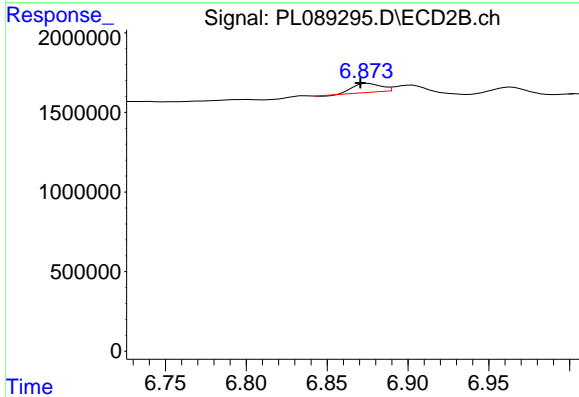
#20 Methoxychlor
 R.T.: 6.646 min
 Delta R.T.: 0.004 min
 Response: 1953101
 Conc: 2.44 ng/ml



#21 Endrin ketone

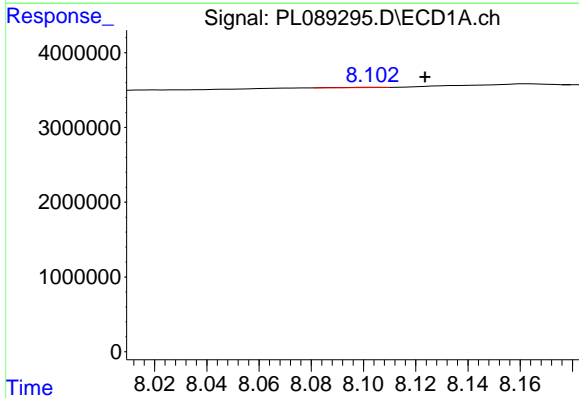
R.T.: 7.658 min
 Delta R.T.: 0.009 min
 Response: 1528171
 Conc: 0.76 ng/ml

Instrument :
 ECD_L
 ClientSampleId :
 WC-3DL



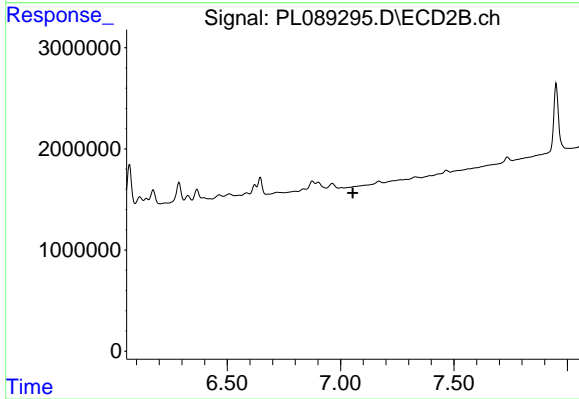
#21 Endrin ketone

R.T.: 6.876 min
 Delta R.T.: 0.005 min
 Response: 648623
 Conc: 0.41 ng/ml



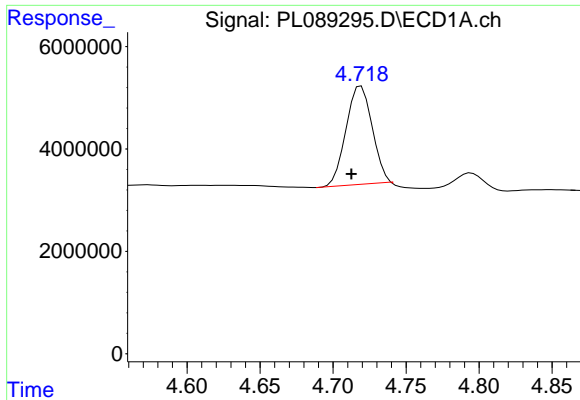
#22 Mirex

R.T.: 8.103 min
 Delta R.T.: -0.020 min
 Response: 38129
 Conc: 0.02 ng/ml



#22 Mirex

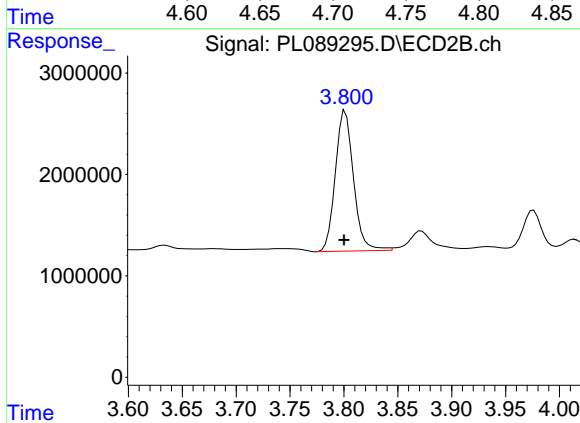
R.T.: 0.000 min
 Exp R.T. : 7.054 min
 Response: 0
 Conc: N.D.



#23 Chlordane-1

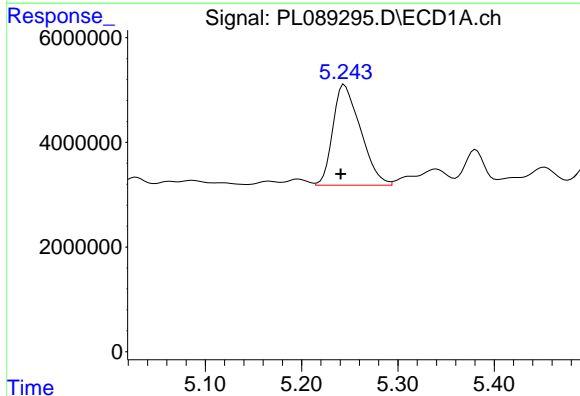
R.T.: 4.719 min
 Delta R.T.: 0.007 min
 Response: 23860715
 Conc: 261.34 ng/ml

Instrument :
 ECD_L
 ClientSampleId :
 WC-3DL



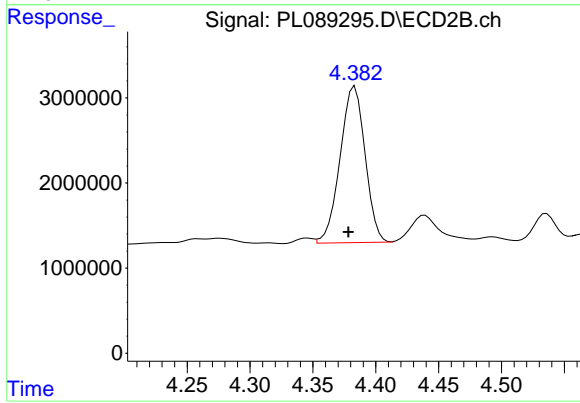
#23 Chlordane-1

R.T.: 3.801 min
 Delta R.T.: 0.001 min
 Response: 16246433
 Conc: 330.20 ng/ml



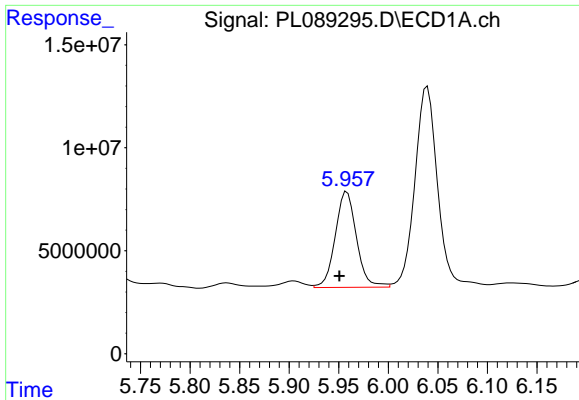
#24 Chlordane-2

R.T.: 5.245 min
 Delta R.T.: 0.004 min
 Response: 38389212
 Conc: 365.28 ng/ml



#24 Chlordane-2

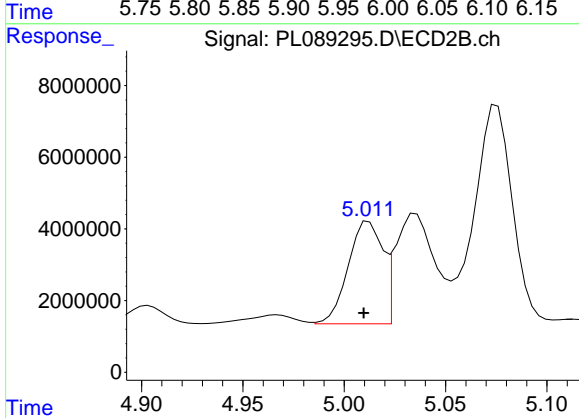
R.T.: 4.383 min
 Delta R.T.: 0.005 min
 Response: 25384888
 Conc: 399.04 ng/ml



#25 Chlordane-3

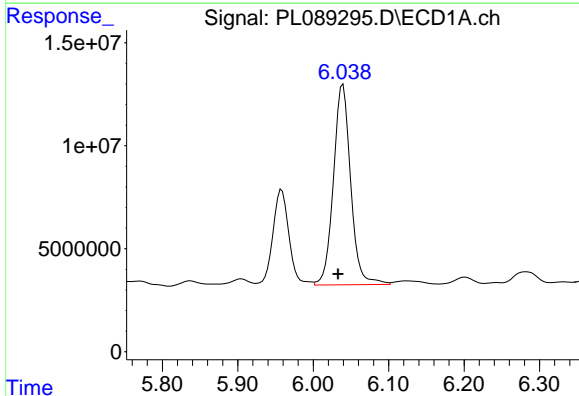
R.T.: 5.958 min
 Delta R.T.: 0.008 min
 Response: 69227692
 Conc: 209.62 ng/ml

Instrument :
 ECD_L
 ClientSampleId :
 WC-3DL



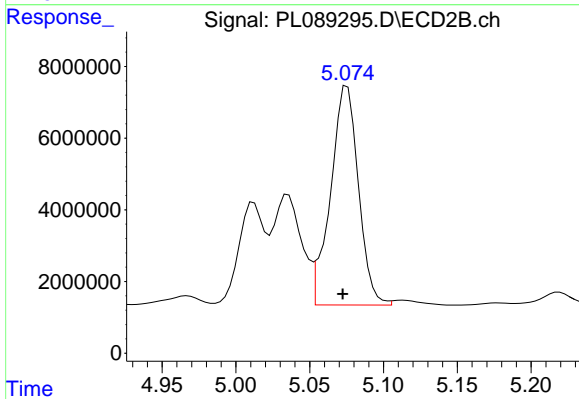
#25 Chlordane-3

R.T.: 5.012 min
 Delta R.T.: 0.002 min
 Response: 33772456
 Conc: 197.24 ng/ml



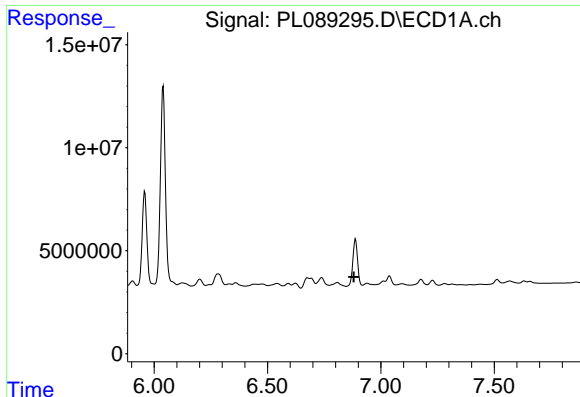
#26 Chlordane-4

R.T.: 6.039 min
 Delta R.T.: 0.007 min
 Response: 154574810
 Conc: 379.21 ng/ml



#26 Chlordane-4

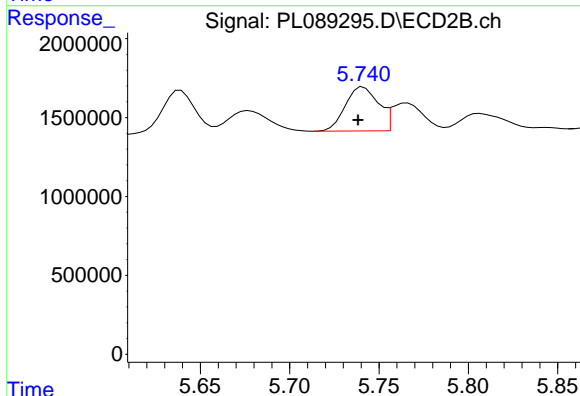
R.T.: 5.075 min
 Delta R.T.: 0.003 min
 Response: 80368577
 Conc: 499.67 ng/ml



#27 Chlordane-5

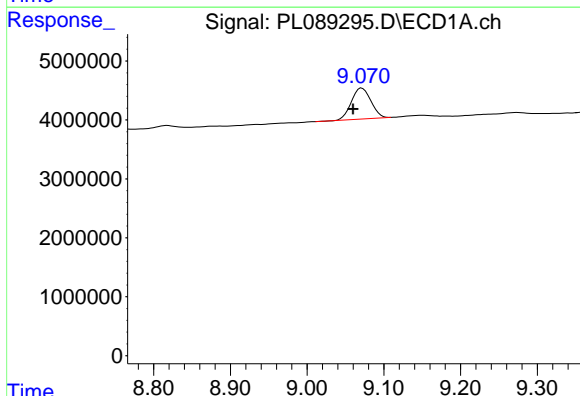
R.T.: 6.888 min
 Delta R.T.: 0.008 min
 Response: -3171347
 Conc: N.D.

Instrument :
 ECD_L
 ClientSampleId :
 WC-3DL



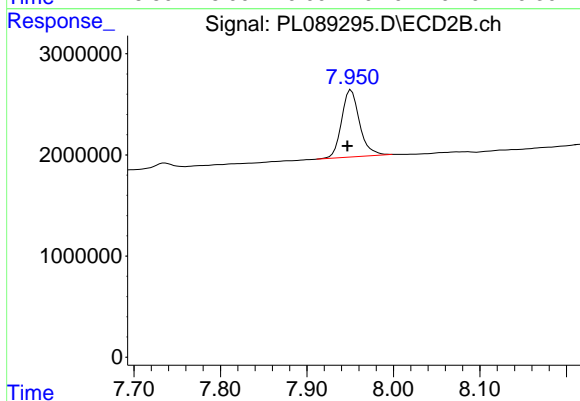
#27 Chlordane-5

R.T.: 5.741 min
 Delta R.T.: 0.003 min
 Response: 3574800
 Conc: 69.85 ng/ml



#28 Decachlorobiphenyl

R.T.: 9.071 min
 Delta R.T.: 0.011 min
 Response: 9325114
 Conc: 6.67 ng/ml



#28 Decachlorobiphenyl

R.T.: 7.951 min
 Delta R.T.: 0.005 min
 Response: 9597007
 Conc: 7.13 ng/ml