

Data Path : Z:\pestpcbsrv\HPCHEM1\ECD\_L\Data\PL050222\  
 Data File : PL074467.D  
 Signal(s) : Signal #1: ECD1A.ch Signal #2: ECD2B.ch  
 Acq On : 02 May 2022 11:15  
 Operator : AR\AJ  
 Sample : PB144507BL  
 Misc :  
 ALS Vial : 5 Sample Multiplier: 1

Instrument :  
 ECD\_L  
 ClientSampleId :  
 PB144507BL

Integration File signal 1: autoint1.e  
 Integration File signal 2: autoint2.e  
 Quant Time: May 03 00:59:23 2022  
 Quant Method : Z:\pestpcbsrv\HPCHEM1\ECD\_L\methods\PL040822.M  
 Quant Title : GC Extractables  
 QLast Update : Thu Apr 14 09:29:23 2022  
 Response via : Initial Calibration  
 Integrator: ChemStation

Volume Inj. : 1 µl  
 Signal #1 Phase : ZB-MR2 Signal #2 Phase: ZB-MR1  
 Signal #1 Info : 30M x 0.32mm x0.2 Signal #2 Info : 30M x 0.32mm x0.5µm

Compound	RT#1	RT#2	Resp#1	Resp#2	ng/ml	ng/ml
-----						
System Monitoring Compounds						
1) SA Tetrachlo...	4.643	5.486	6511444	34377150	20.152	19.281
28) SA Decachlor...	10.408	11.332	11251651	36753359	21.637	20.808

Target Compounds

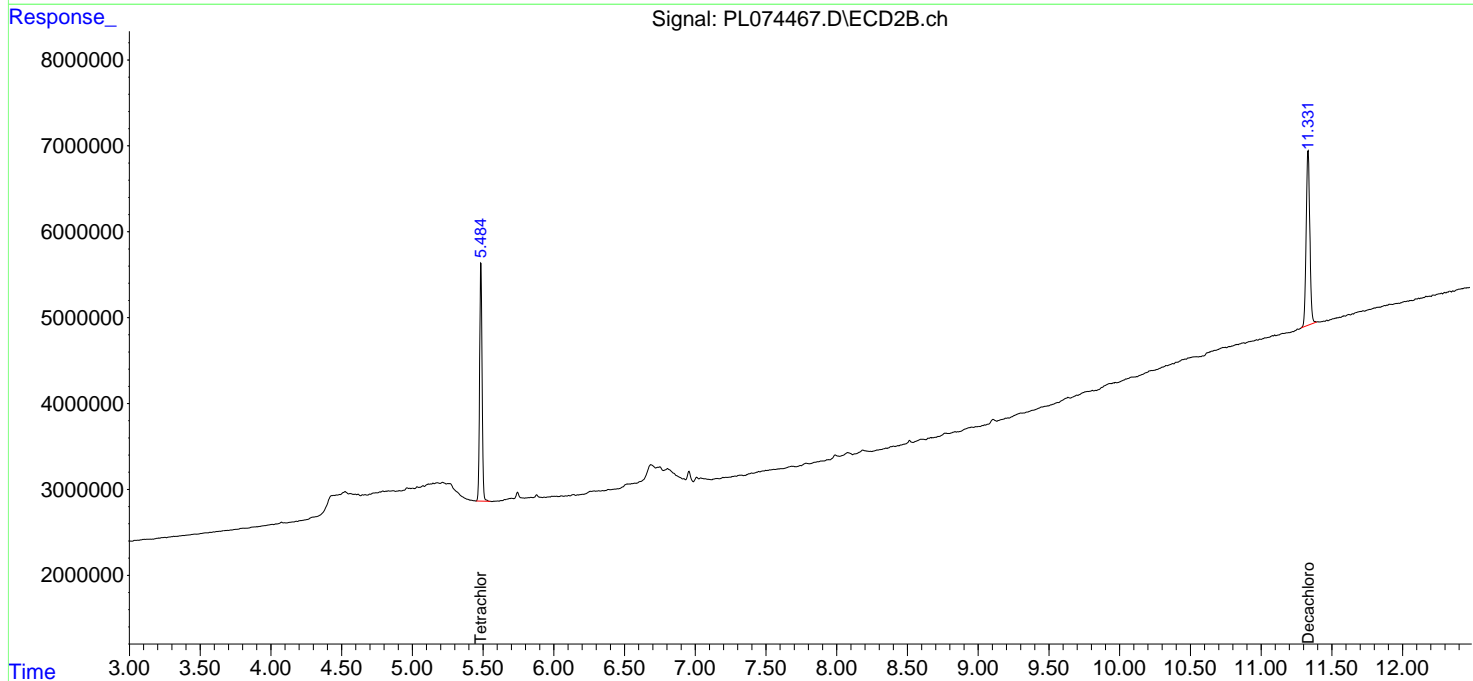
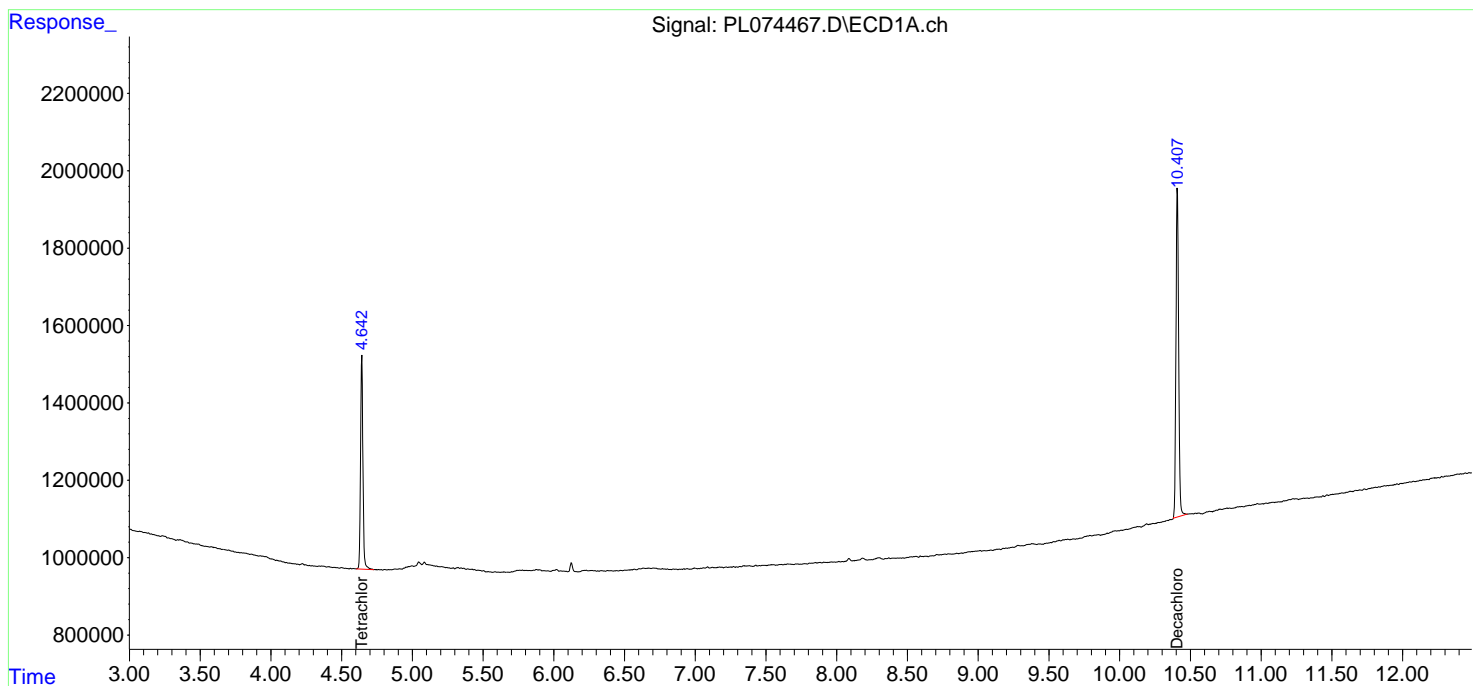
(f)=RT Delta > 1/2 Window (#)=Amounts differ by > 25% (m)=manual int.

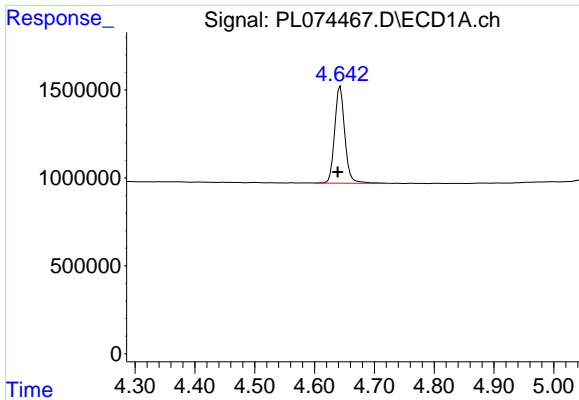
Data Path : Z:\pestpcbsrv\HPCHEM1\ECD\_L\Data\PL050222\  
 Data File : PL074467.D  
 Signal(s) : Signal #1: ECD1A.ch Signal #2: ECD2B.ch  
 Acq On : 02 May 2022 11:15  
 Operator : AR\AJ  
 Sample : PB144507BL  
 Misc :  
 ALS Vial : 5 Sample Multiplier: 1

Instrument :  
 ECD\_L  
 ClientSampleId :  
 PB144507BL

Integration File signal 1: autoint1.e  
 Integration File signal 2: autoint2.e  
 Quant Time: May 03 00:59:23 2022  
 Quant Method : Z:\pestpcbsrv\HPCHEM1\ECD\_L\methods\PL040822.M  
 Quant Title : GC Extractables  
 QLast Update : Thu Apr 14 09:29:23 2022  
 Response via : Initial Calibration  
 Integrator: ChemStation

Volume Inj. : 1 µl  
 Signal #1 Phase : ZB-MR2 Signal #2 Phase: ZB-MR1  
 Signal #1 Info : 30M x 0.32mm x0.2 Signal #2 Info : 30M x 0.32mm x0.5µm

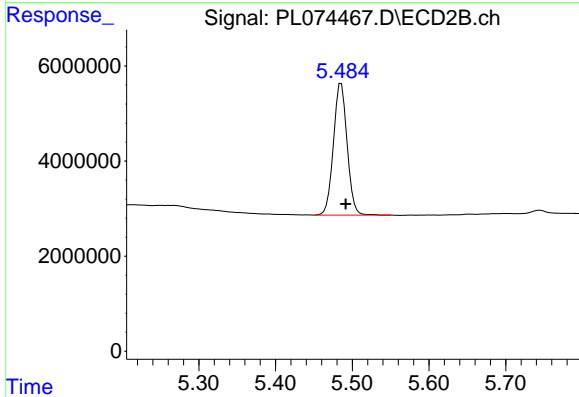




#1 Tetrachloro-m-xylene

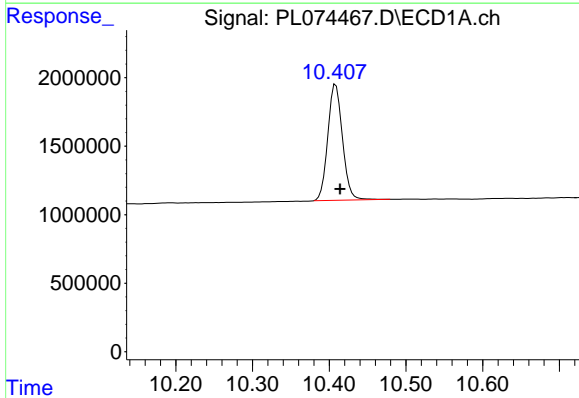
R.T.: 4.643 min  
 Delta R.T.: 0.004 min  
 Response: 6511444  
 Conc: 20.15 ng/ml

Instrument :  
 ECD\_L  
 ClientSampleId :  
 PB144507BL



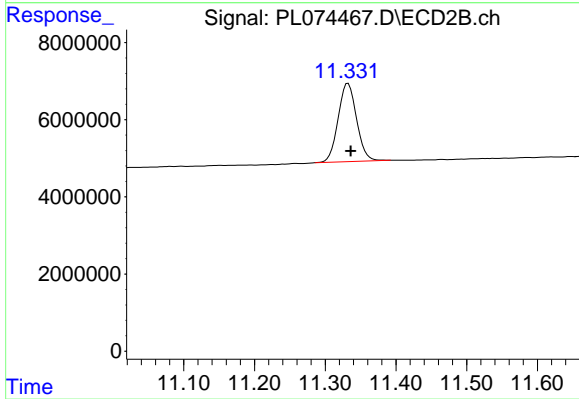
#1 Tetrachloro-m-xylene

R.T.: 5.486 min  
 Delta R.T.: -0.006 min  
 Response: 34377150  
 Conc: 19.28 ng/ml



#28 Decachlorobiphenyl

R.T.: 10.408 min  
 Delta R.T.: -0.005 min  
 Response: 11251651  
 Conc: 21.64 ng/ml



#28 Decachlorobiphenyl

R.T.: 11.332 min  
 Delta R.T.: -0.004 min  
 Response: 36753359  
 Conc: 20.81 ng/ml