

Data Path : Z:\pestpcbsrv\HPCHEM1\ECD_L\Data\PL050224\
 Data File : PL089320.D
 Signal(s) : Signal #1: ECD1A.ch Signal #2: ECD2B.ch
 Acq On : 02 May 2024 14:59
 Operator : AR\AJ
 Sample : P2332-01
 Misc :
 ALS Vial : 12 Sample Multiplier: 1

Instrument :
 ECD_L
 ClientSampleId :
 PAT-DIS-02-05012024

Integration File signal 1: autoint1.e
 Integration File signal 2: autoint2.e
 Quant Time: May 02 23:02:45 2024
 Quant Method : Z:\pestpcbsrv\HPCHEM1\ECD_L\methods\PL042624.M
 Quant Title : GC Extractables
 QLast Update : Fri Apr 26 19:27:30 2024
 Response via : Initial Calibration
 Integrator: ChemStation

Volume Inj. : 1 µl
 Signal #1 Phase : ZB-MR2 Signal #2 Phase: ZB-MR1
 Signal #1 Info : 30M x 0.32mm x0.2 Signal #2 Info : 30M x 0.32mm x0.5µm

Compound	RT#1	RT#2	Resp#1	Resp#2	ng/ml	ng/ml

System Monitoring Compounds						
1) SA Tetrachlo...	3.551	2.797	22112614	14440911	10.981	11.255
28) SA Decachlor...	9.066	7.949	18077521	14648633	12.922	10.890
Target Compounds						
2) A alpha-BHC	3.999	3.290	524558	36166	0.184	0.019 #
3) MA gamma-BHC...	4.348	3.657f	3581173	-196302	1.286	N.D. #
4) MA Heptachlor	4.905f	3.948f	4030237	781827	1.625	0.446 #
5) MB Aldrin	5.250f	4.258	9126672	1101715	3.554	0.623 #
6) B beta-BHC	4.560f	3.923	5416949	356988	4.294	0.437 #
7) B delta-BHC	4.782	4.145f	1621702	398703	0.611	0.222 #
8) B Heptachlo...	5.697	4.758	3135802	321773	1.337	0.199 #
9) A Endosulfan I	6.077	5.144f	3053249	306667	1.420	0.205 #
10) B gamma-Chl...	5.949	4.984f	10939709	691122	4.786	0.421 #
11) B alpha-Chl...	6.034	5.074	8598570	1361501	3.780	0.826 #
12) B 4,4'-DDE	6.180f	5.264	2648699	667746	1.309	0.459 #
13) MA Dieldrin	6.375f	5.397	1051668	1204609	0.470	0.749 #
14) MA Endrin	6.582	5.682	571010	413354	0.301	0.288
15) B Endosulfa...	6.797	5.959	735976	386680	0.369	0.269 #
16) A 4,4'-DDD	6.727	5.818	1331485	205194	0.789	0.166 #
17) MA 4,4'-DDT	7.008f	6.065	4496452	906989	2.445	0.670 #
18) B Endrin al...	6.959f	6.163f	396698	355561	0.262	0.320
19) B Endosulfa...	7.152	6.363	294690	285539	0.163	0.206 #
20) A Methoxychlor	0.000	6.619f	0	409451	N.D.	0.512 #
21) B Endrin ke...	7.658	0.000	1007213	0	0.503	N.D. #
22) Mirex	0.000	7.054	0	90017	N.D.	0.066 #
23) Chlordane-1	4.715	3.801	578127	2094169	6.332	42.563 #
24) Chlordane-2	5.250	4.354f	9126672	3058326	86.843	48.075 #
25) Chlordane-3	5.949	5.035f	10939709	1787011	33.125	10.437 #
26) Chlordane-4	6.034	5.074	8598570	1361501	21.094	8.465 #
27) Chlordane-5	6.858f	5.739	327142	894135	3.931	17.471 #

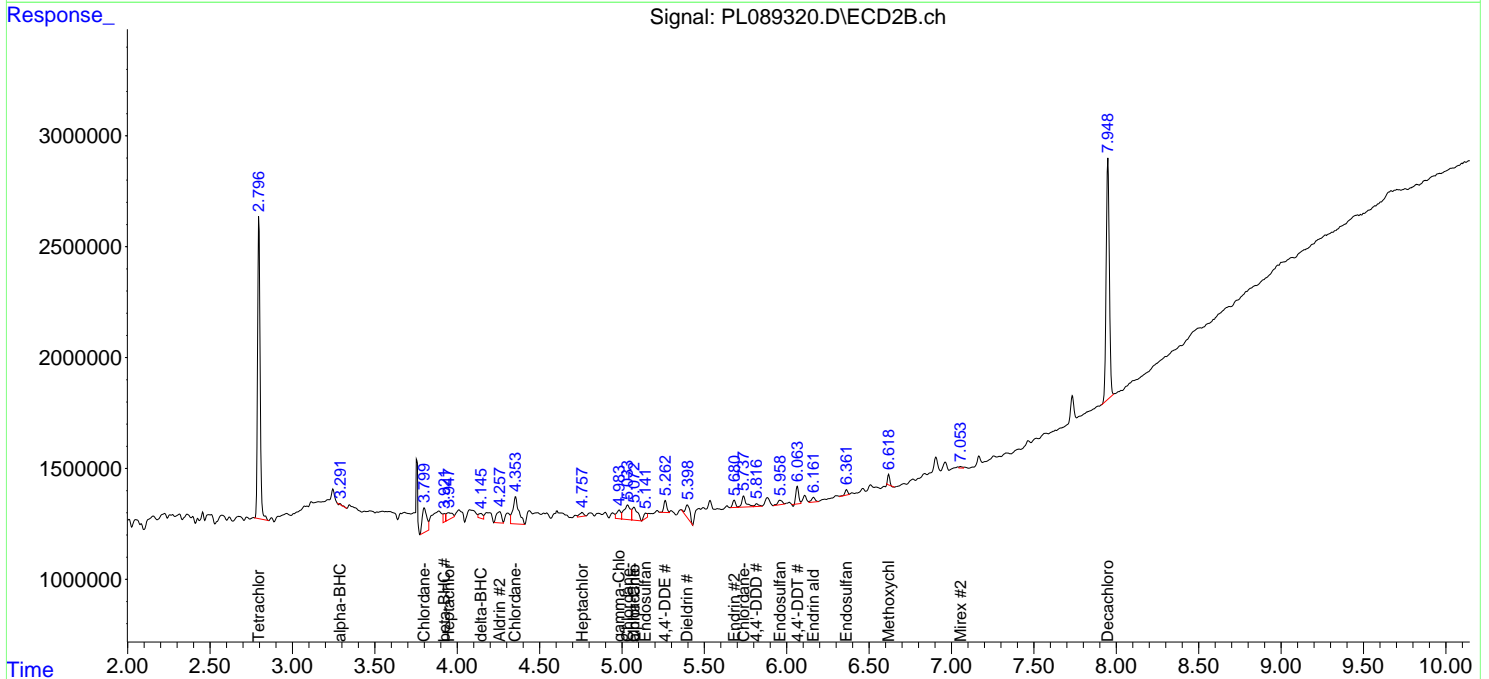
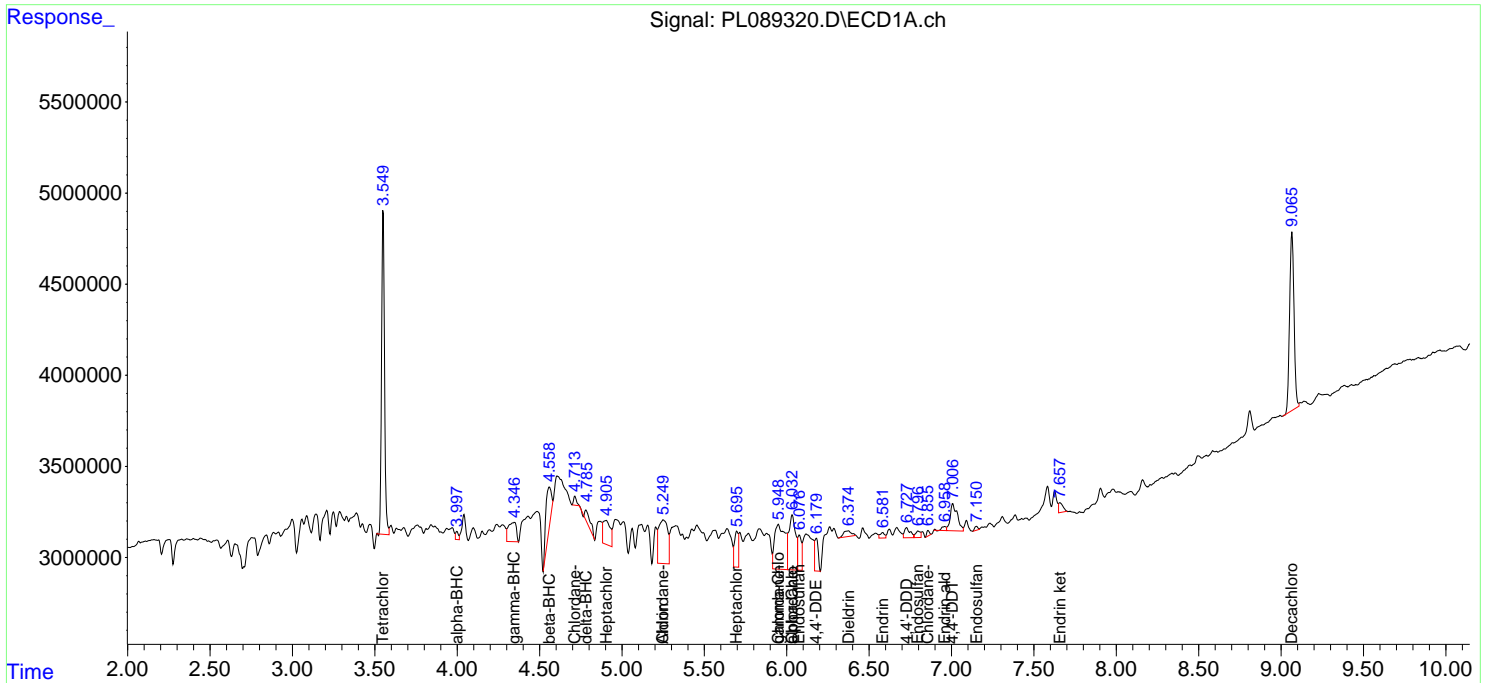
(f)=RT Delta > 1/2 Window (#)=Amounts differ by > 25% (m)=manual int.

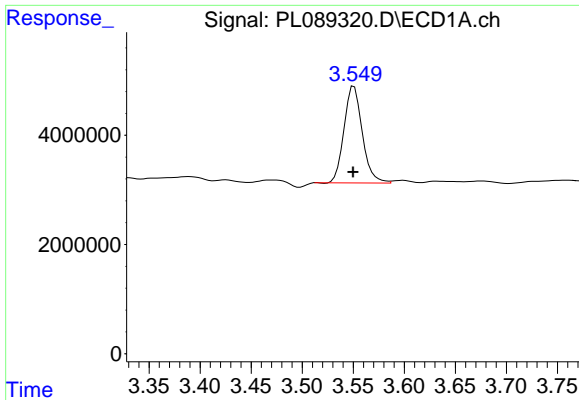
Data Path : Z:\pestpcbsrv\HPCHEM1\ECD_L\Data\PL050224\
 Data File : PL089320.D
 Signal(s) : Signal #1: ECD1A.ch Signal #2: ECD2B.ch
 Acq On : 02 May 2024 14:59
 Operator : AR\AJ
 Sample : P2332-01
 Misc :
 ALS Vial : 12 Sample Multiplier: 1

Instrument :
 ECD_L
 ClientSampleId :
 PAT-DIS-02-05012024

Integration File signal 1: autoint1.e
 Integration File signal 2: autoint2.e
 Quant Time: May 02 23:02:45 2024
 Quant Method : Z:\pestpcbsrv\HPCHEM1\ECD_L\methods\PL042624.M
 Quant Title : GC Extractables
 QLast Update : Fri Apr 26 19:27:30 2024
 Response via : Initial Calibration
 Integrator: ChemStation

Volume Inj. : 1 µl
 Signal #1 Phase : ZB-MR2 Signal #2 Phase: ZB-MR1
 Signal #1 Info : 30M x 0.32mm x0.2 Signal #2 Info : 30M x 0.32mm x0.5µm

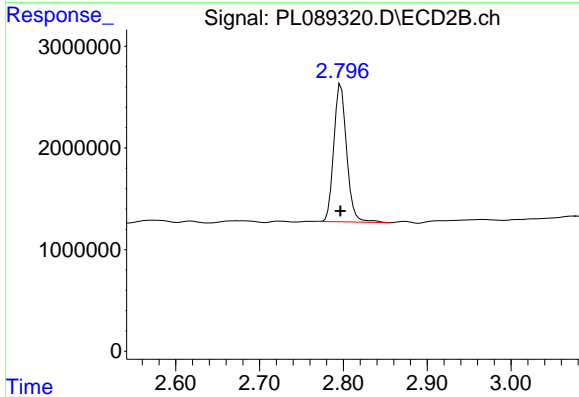




#1 Tetrachloro-m-xylene

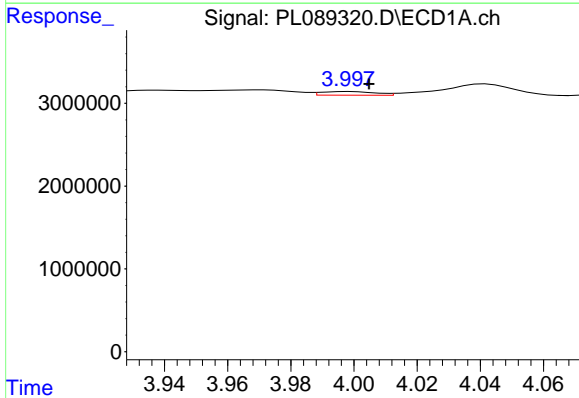
R.T.: 3.551 min
 Delta R.T.: 0.000 min
 Response: 22112614
 Conc: 10.98 ng/ml

Instrument :
 ECD_L
 ClientSampleId :
 PAT-DIS-02-05012024



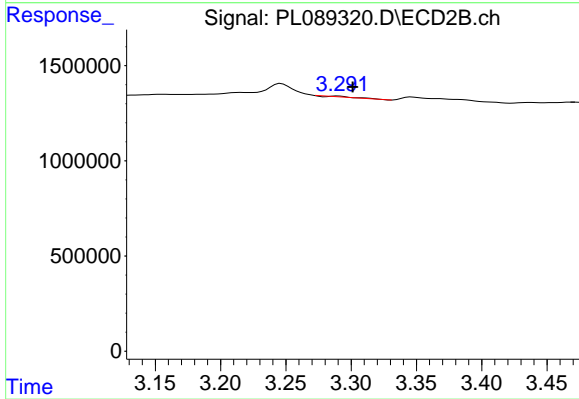
#1 Tetrachloro-m-xylene

R.T.: 2.797 min
 Delta R.T.: 0.000 min
 Response: 14440911
 Conc: 11.26 ng/ml



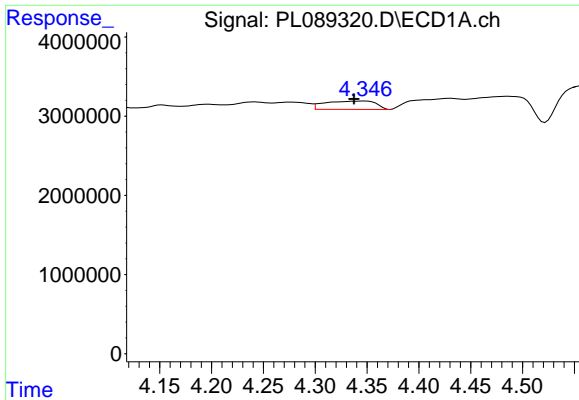
#2 alpha-BHC

R.T.: 3.999 min
 Delta R.T.: -0.006 min
 Response: 524558
 Conc: 0.18 ng/ml



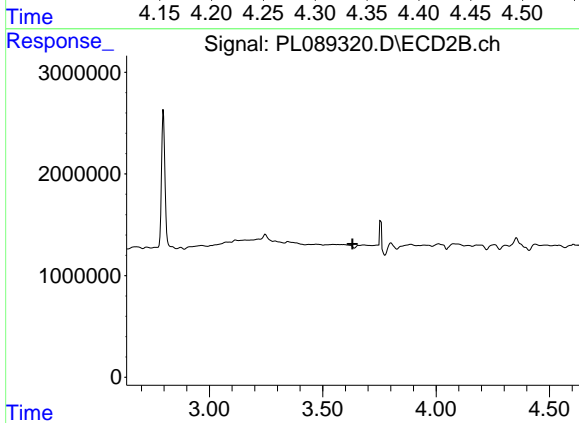
#2 alpha-BHC

R.T.: 3.290 min
 Delta R.T.: -0.011 min
 Response: 36166
 Conc: 0.02 ng/ml

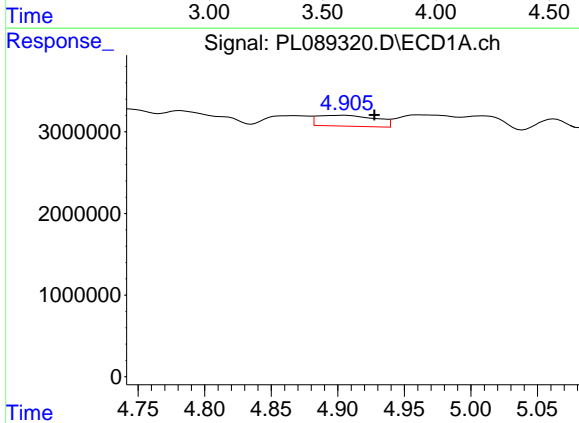


#3 gamma-BHC (Lindane)
 R.T.: 4.348 min
 Delta R.T.: 0.010 min
 Response: 3581173
 Conc: 1.29 ng/ml

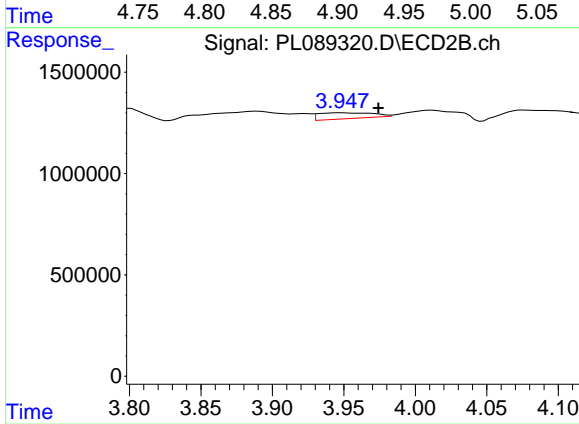
Instrument :
 ECD_L
 ClientSampleId :
 PAT-DIS-02-05012024



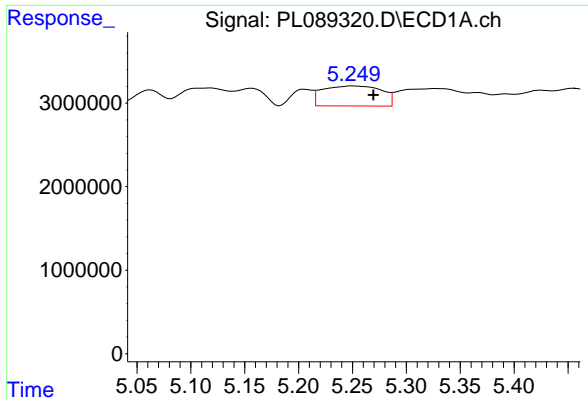
#3 gamma-BHC (Lindane)
 R.T.: 3.657 min
 Delta R.T.: 0.025 min
 Response: -196302
 Conc: N.D.



#4 Heptachlor
 R.T.: 4.905 min
 Delta R.T.: -0.022 min
 Response: 4030237
 Conc: 1.63 ng/ml

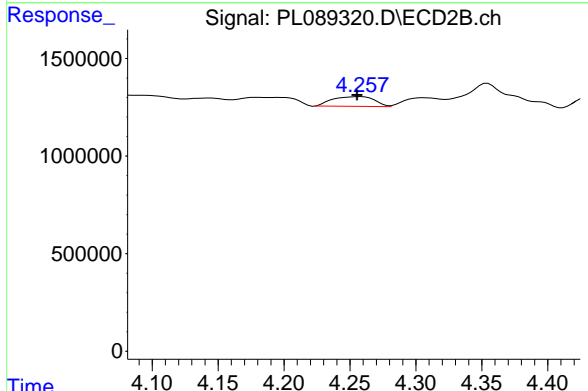


#4 Heptachlor
 R.T.: 3.948 min
 Delta R.T.: -0.026 min
 Response: 781827
 Conc: 0.45 ng/ml

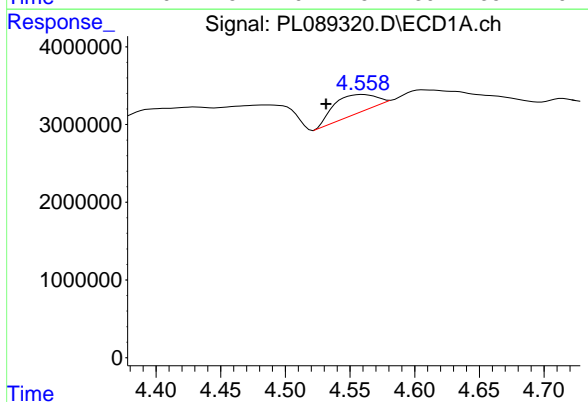


#5 Aldrin
 R.T.: 5.250 min
 Delta R.T.: -0.019 min
 Response: 9126672
 Conc: 3.55 ng/ml

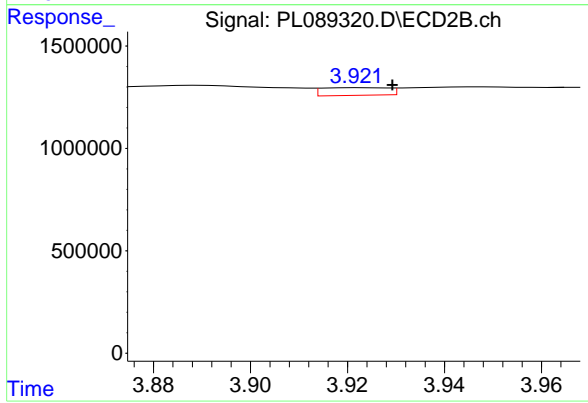
Instrument : ECD_L
 ClientSampleId : PAT-DIS-02-05012024



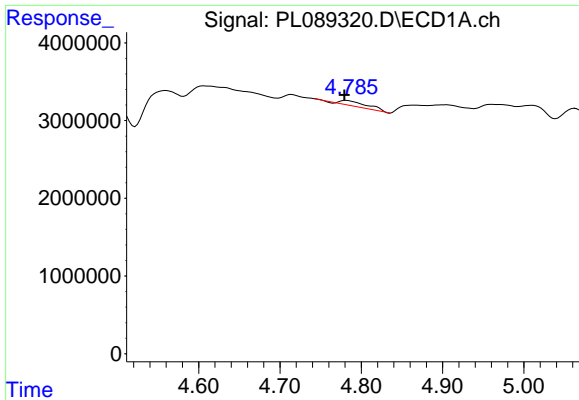
#5 Aldrin
 R.T.: 4.258 min
 Delta R.T.: 0.003 min
 Response: 1101715
 Conc: 0.62 ng/ml



#6 beta-BHC
 R.T.: 4.560 min
 Delta R.T.: 0.028 min
 Response: 5416949
 Conc: 4.29 ng/ml



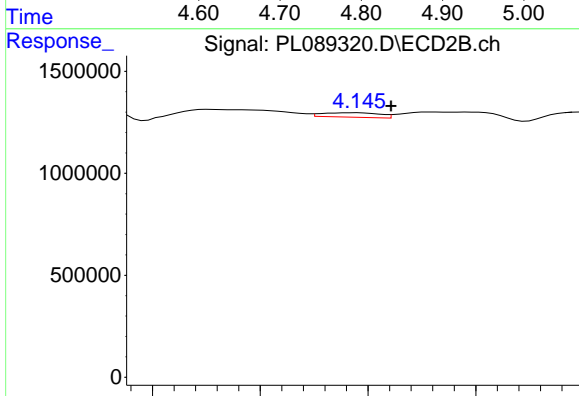
#6 beta-BHC
 R.T.: 3.923 min
 Delta R.T.: -0.006 min
 Response: 356988
 Conc: 0.44 ng/ml



#7 delta-BHC

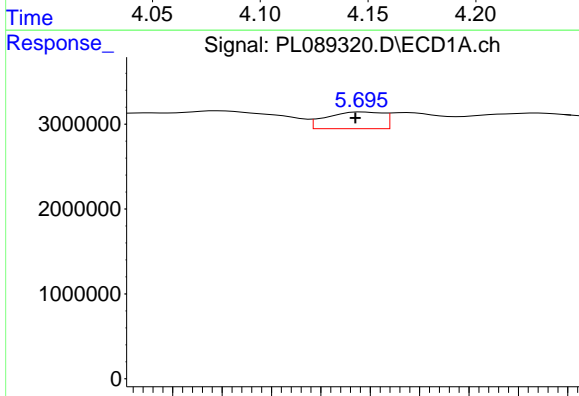
R.T.: 4.782 min
 Delta R.T.: 0.002 min
 Response: 1621702
 Conc: 0.61 ng/ml

Instrument : ECD_L
 ClientSampleId : PAT-DIS-02-05012024



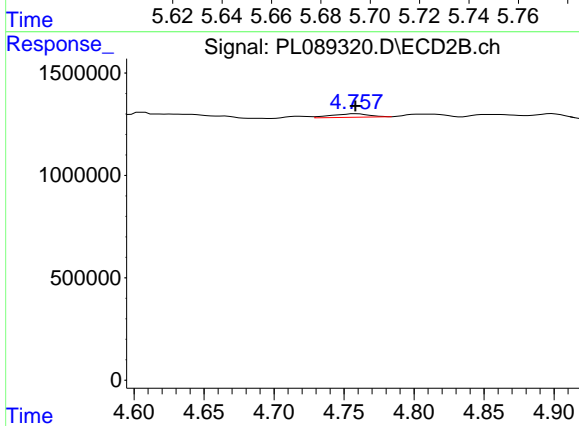
#7 delta-BHC

R.T.: 4.145 min
 Delta R.T.: -0.016 min
 Response: 398703
 Conc: 0.22 ng/ml



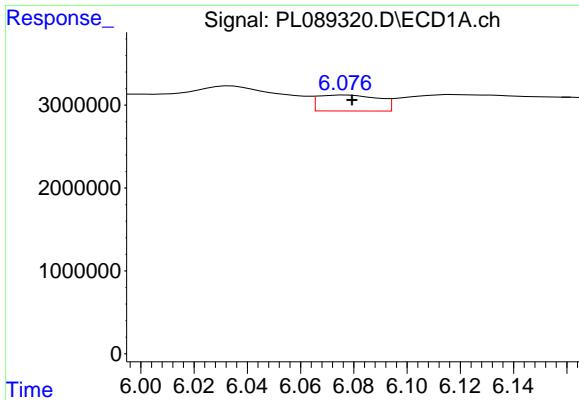
#8 Heptachlor epoxide

R.T.: 5.697 min
 Delta R.T.: 0.003 min
 Response: 3135802
 Conc: 1.34 ng/ml



#8 Heptachlor epoxide

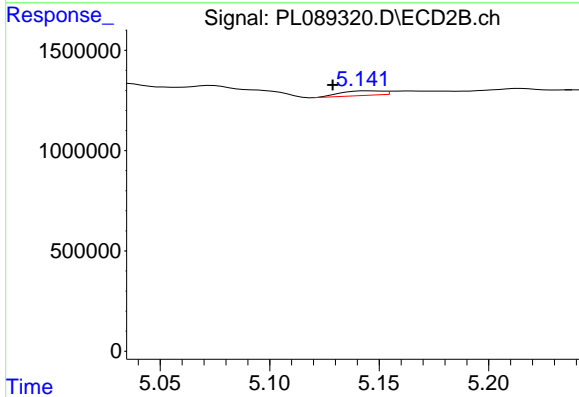
R.T.: 4.758 min
 Delta R.T.: 0.000 min
 Response: 321773
 Conc: 0.20 ng/ml



#9 Endosulfan I

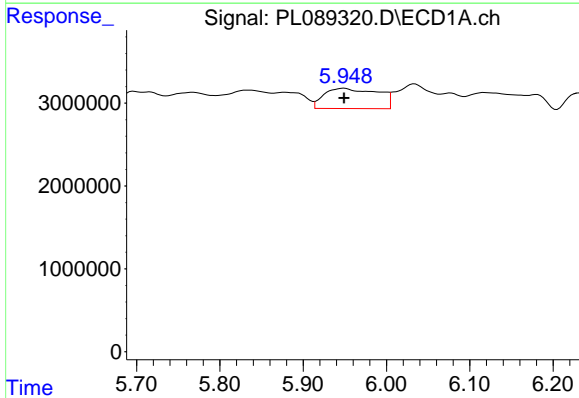
R.T.: 6.077 min
 Delta R.T.: -0.002 min
 Response: 3053249
 Conc: 1.42 ng/ml

Instrument :
 ECD_L
 ClientSampleId :
 PAT-DIS-02-05012024



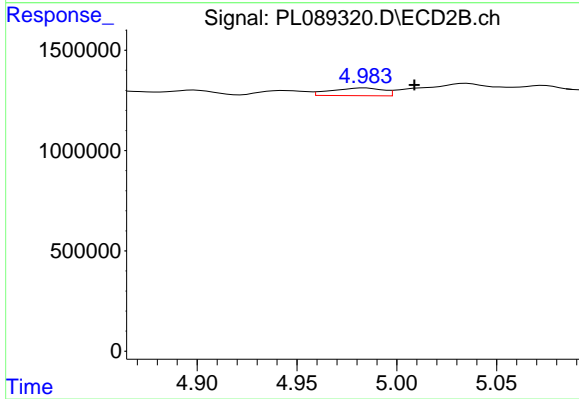
#9 Endosulfan I

R.T.: 5.144 min
 Delta R.T.: 0.015 min
 Response: 306667
 Conc: 0.20 ng/ml



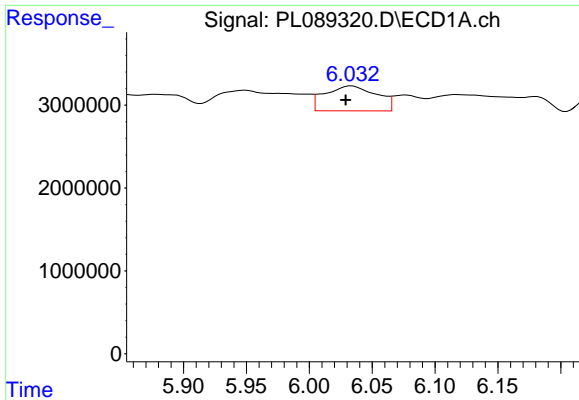
#10 gamma-Chlordane

R.T.: 5.949 min
 Delta R.T.: 0.000 min
 Response: 10939709
 Conc: 4.79 ng/ml



#10 gamma-Chlordane

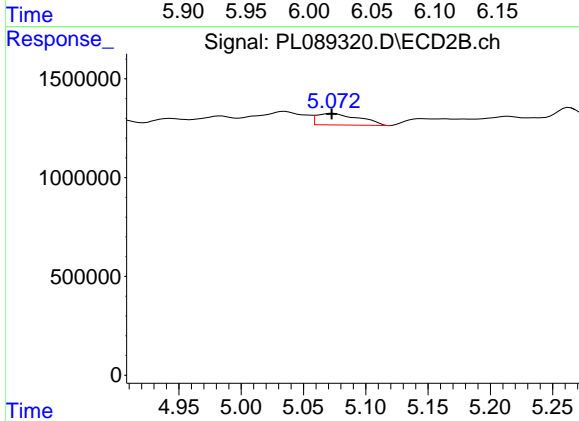
R.T.: 4.984 min
 Delta R.T.: -0.025 min
 Response: 691122
 Conc: 0.42 ng/ml



#11 alpha-Chlordane

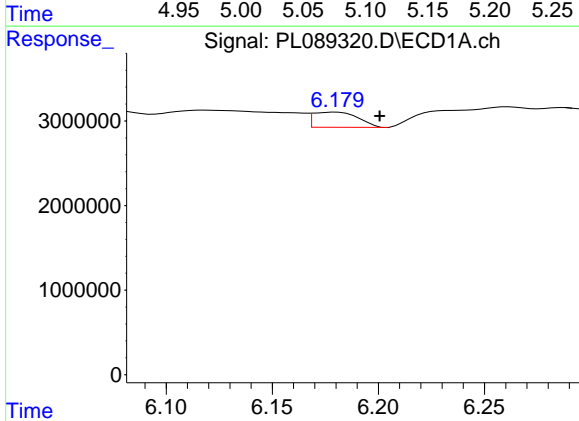
R.T.: 6.034 min
 Delta R.T.: 0.005 min
 Response: 8598570
 Conc: 3.78 ng/ml

Instrument :
 ECD_L
 ClientSampleId :
 PAT-DIS-02-05012024



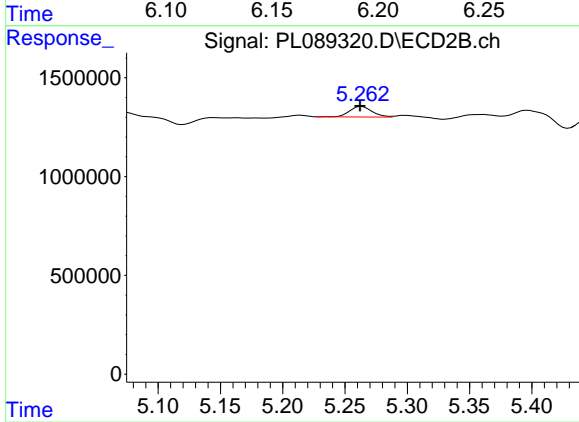
#11 alpha-Chlordane

R.T.: 5.074 min
 Delta R.T.: 0.000 min
 Response: 1361501
 Conc: 0.83 ng/ml



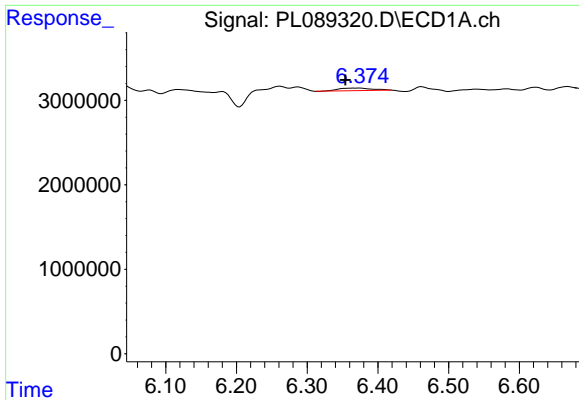
#12 4,4'-DDE

R.T.: 6.180 min
 Delta R.T.: -0.021 min
 Response: 2648699
 Conc: 1.31 ng/ml



#12 4,4'-DDE

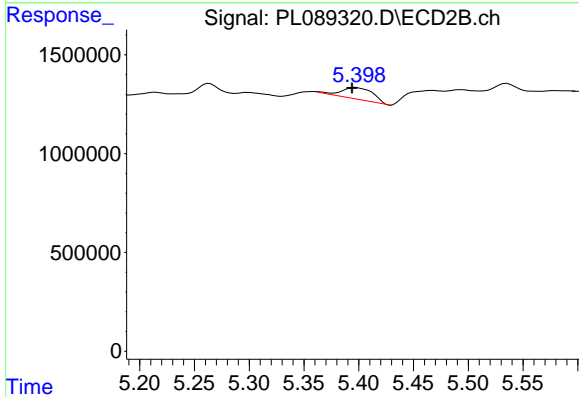
R.T.: 5.264 min
 Delta R.T.: 0.001 min
 Response: 667746
 Conc: 0.46 ng/ml



#13 Dieldrin

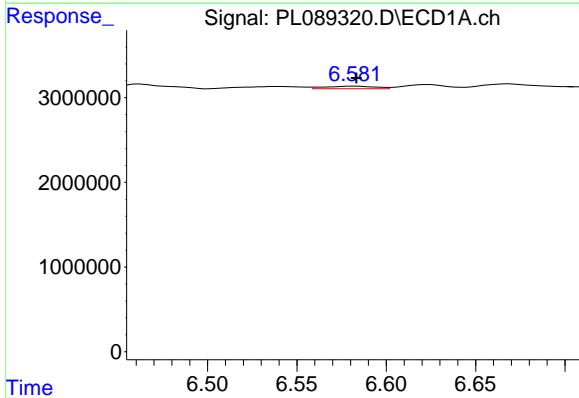
R.T.: 6.375 min
 Delta R.T.: 0.021 min
 Response: 1051668
 Conc: 0.47 ng/ml

Instrument :
 ECD_L
 ClientSampleId :
 PAT-DIS-02-05012024



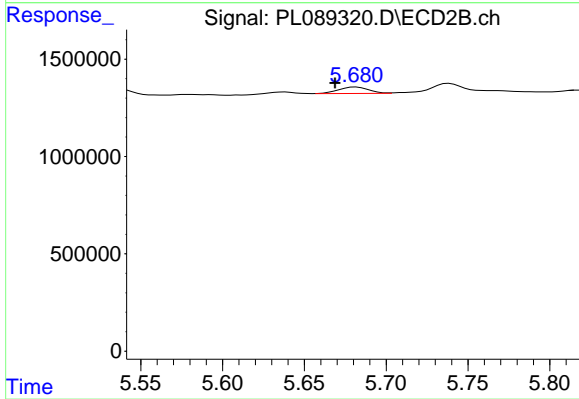
#13 Dieldrin

R.T.: 5.397 min
 Delta R.T.: 0.003 min
 Response: 1204609
 Conc: 0.75 ng/ml



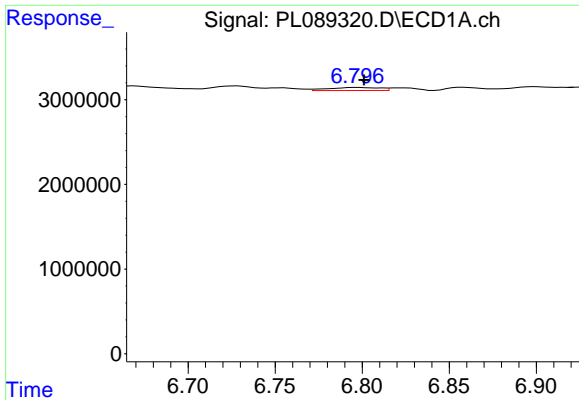
#14 Endrin

R.T.: 6.582 min
 Delta R.T.: 0.000 min
 Response: 571010
 Conc: 0.30 ng/ml



#14 Endrin

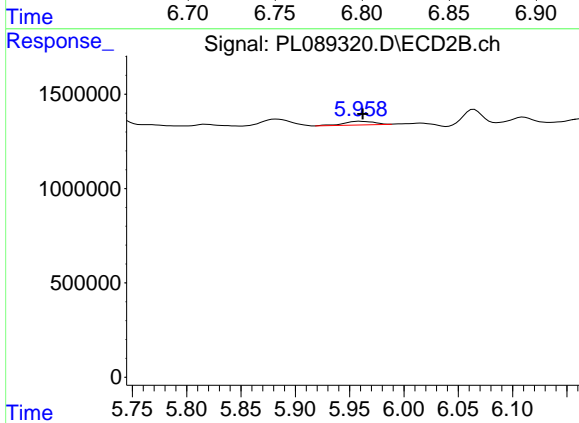
R.T.: 5.682 min
 Delta R.T.: 0.013 min
 Response: 413354
 Conc: 0.29 ng/ml



#15 Endosulfan II

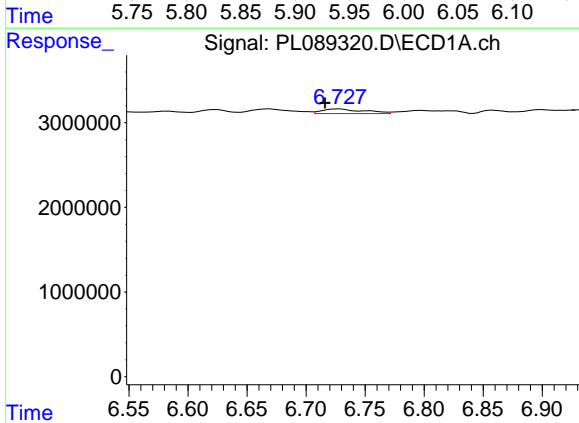
R.T.: 6.797 min
 Delta R.T.: -0.004 min
 Response: 735976
 Conc: 0.37 ng/ml

Instrument :
 ECD_L
 ClientSampleId :
 PAT-DIS-02-05012024



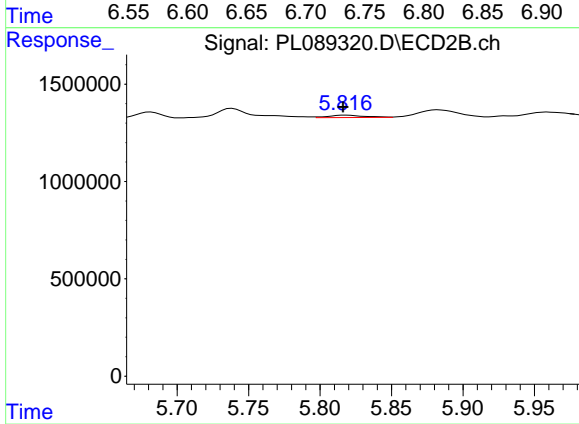
#15 Endosulfan II

R.T.: 5.959 min
 Delta R.T.: -0.003 min
 Response: 386680
 Conc: 0.27 ng/ml



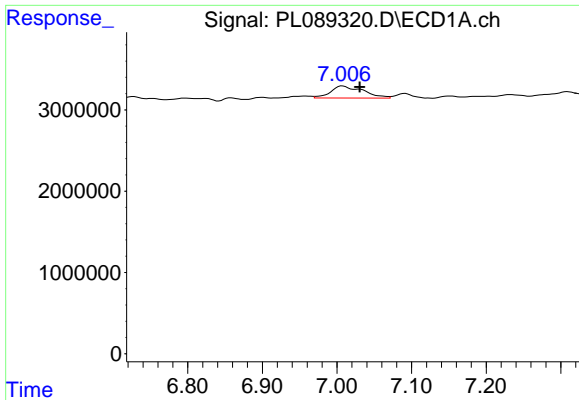
#16 4,4'-DDD

R.T.: 6.727 min
 Delta R.T.: 0.011 min
 Response: 1331485
 Conc: 0.79 ng/ml



#16 4,4'-DDD

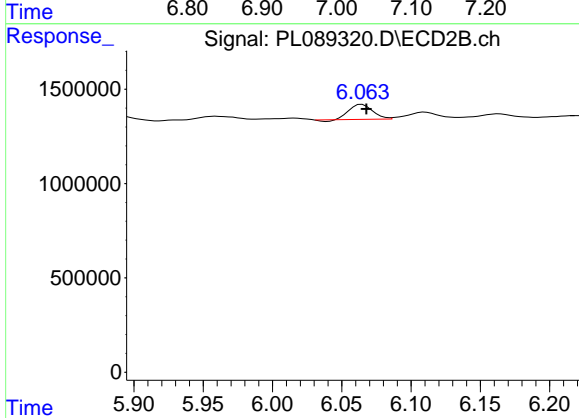
R.T.: 5.818 min
 Delta R.T.: 0.002 min
 Response: 205194
 Conc: 0.17 ng/ml



#17 4,4'-DDT

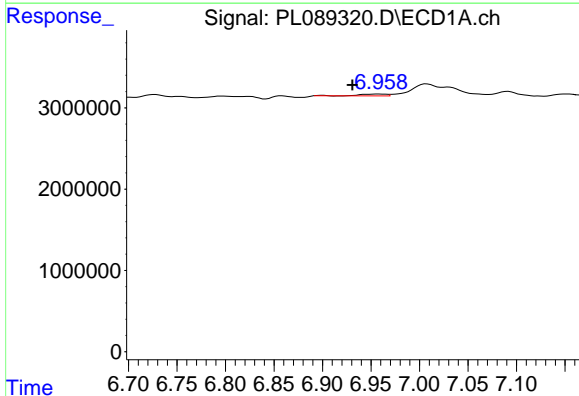
R.T.: 7.008 min
 Delta R.T.: -0.023 min
 Response: 4496452
 Conc: 2.45 ng/ml

Instrument :
 ECD_L
 ClientSampleId :
 PAT-DIS-02-05012024



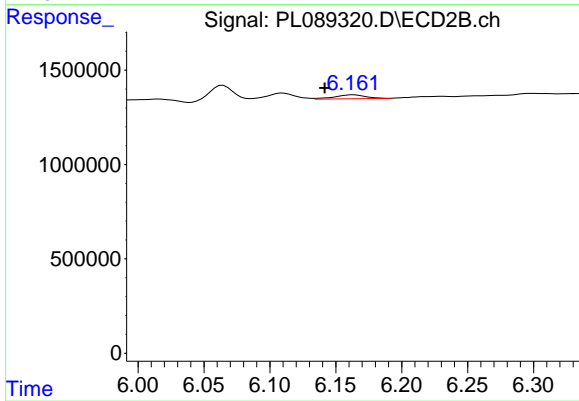
#17 4,4'-DDT

R.T.: 6.065 min
 Delta R.T.: -0.003 min
 Response: 906989
 Conc: 0.67 ng/ml



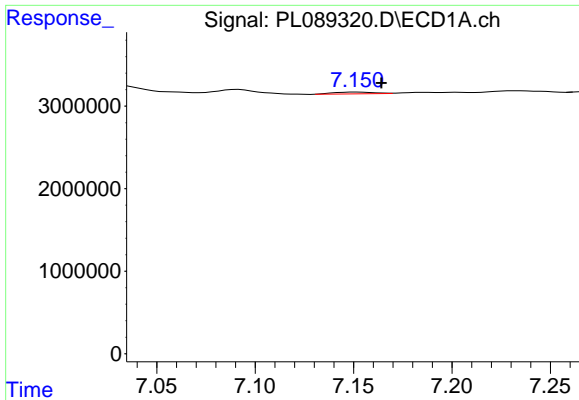
#18 Endrin aldehyde

R.T.: 6.959 min
 Delta R.T.: 0.028 min
 Response: 396698
 Conc: 0.26 ng/ml



#18 Endrin aldehyde

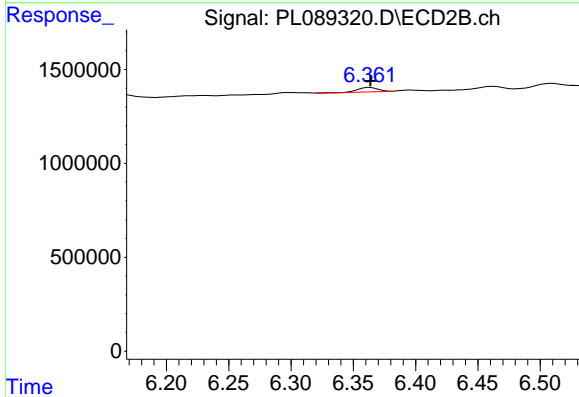
R.T.: 6.163 min
 Delta R.T.: 0.022 min
 Response: 355561
 Conc: 0.32 ng/ml



#19 Endosulfan Sulfate

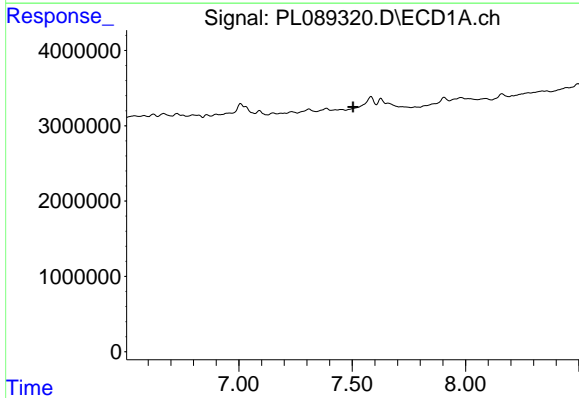
R.T.: 7.152 min
 Delta R.T.: -0.012 min
 Response: 294690
 Conc: 0.16 ng/ml

Instrument :
 ECD_L
 ClientSampleId :
 PAT-DIS-02-05012024



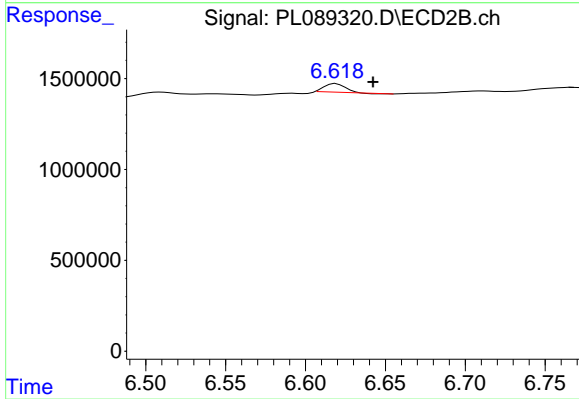
#19 Endosulfan Sulfate

R.T.: 6.363 min
 Delta R.T.: 0.000 min
 Response: 285539
 Conc: 0.21 ng/ml



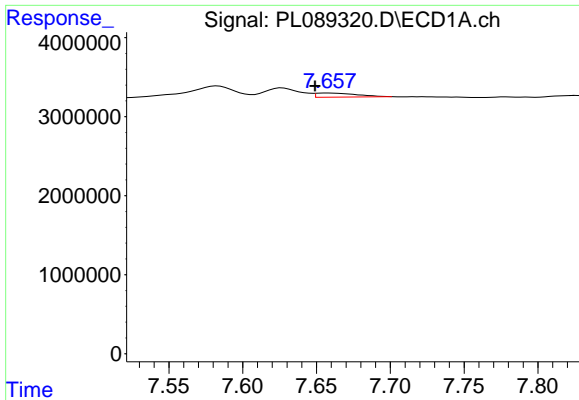
#20 Methoxychlor

R.T.: 0.000 min
 Exp R.T. : 7.505 min
 Response: 0
 Conc: N.D.



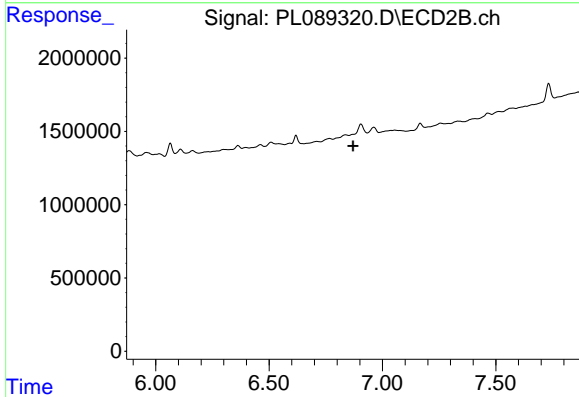
#20 Methoxychlor

R.T.: 6.619 min
 Delta R.T.: -0.023 min
 Response: 409451
 Conc: 0.51 ng/ml

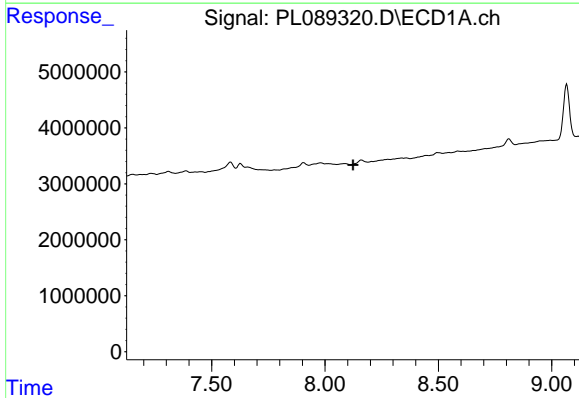


#21 Endrin ketone
 R.T.: 7.658 min
 Delta R.T.: 0.010 min
 Response: 1007213
 Conc: 0.50 ng/ml

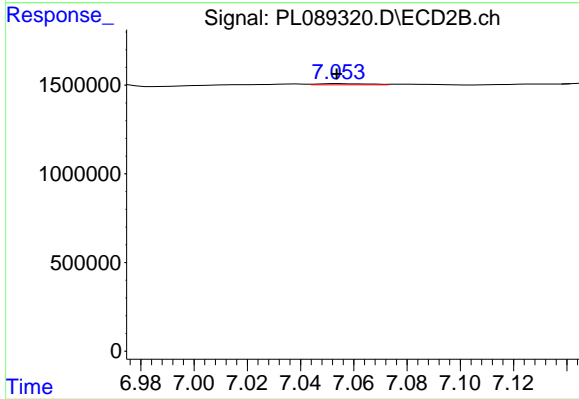
Instrument :
 ECD_L
 ClientSampleId :
 PAT-DIS-02-05012024



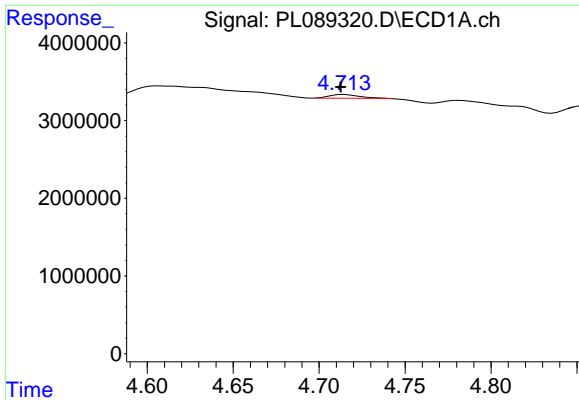
#21 Endrin ketone
 R.T.: 0.000 min
 Exp R.T. : 6.871 min
 Response: 0
 Conc: N.D.



#22 Mirex
 R.T.: 0.000 min
 Exp R.T. : 8.124 min
 Response: 0
 Conc: N.D.



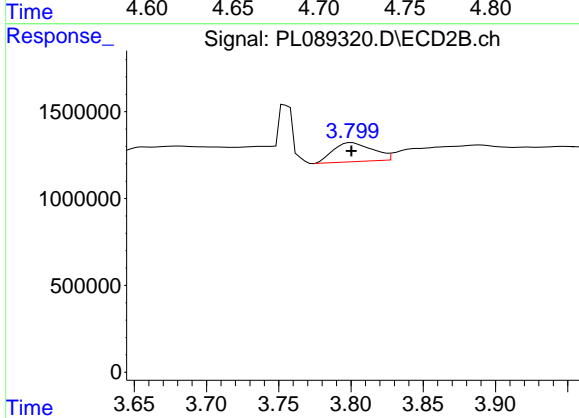
#22 Mirex
 R.T.: 7.054 min
 Delta R.T.: 0.000 min
 Response: 90017
 Conc: 0.07 ng/ml



#23 Chlordane-1

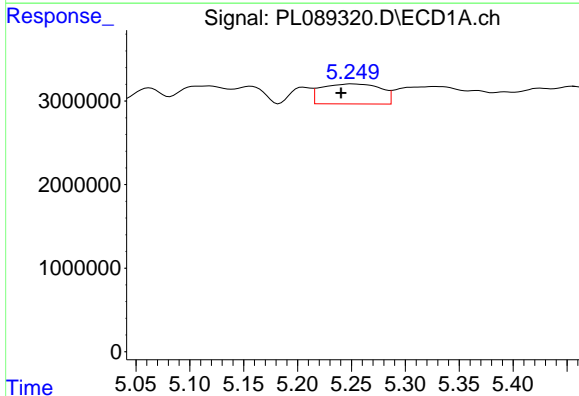
R.T.: 4.715 min
 Delta R.T.: 0.002 min
 Response: 578127
 Conc: 6.33 ng/ml

Instrument : ECD_L
 ClientSampleId : PAT-DIS-02-05012024



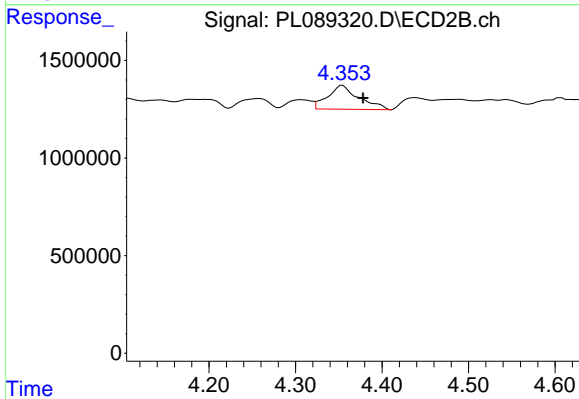
#23 Chlordane-1

R.T.: 3.801 min
 Delta R.T.: 0.000 min
 Response: 2094169
 Conc: 42.56 ng/ml



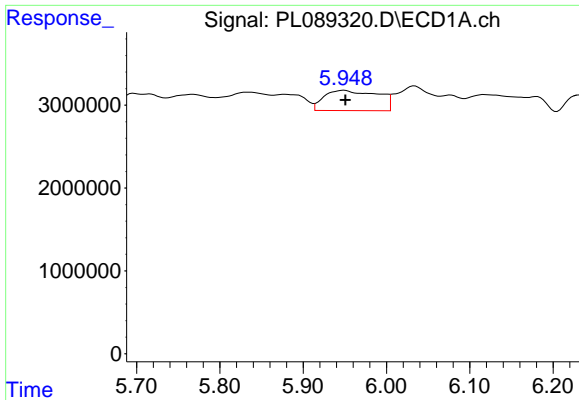
#24 Chlordane-2

R.T.: 5.250 min
 Delta R.T.: 0.009 min
 Response: 9126672
 Conc: 86.84 ng/ml



#24 Chlordane-2

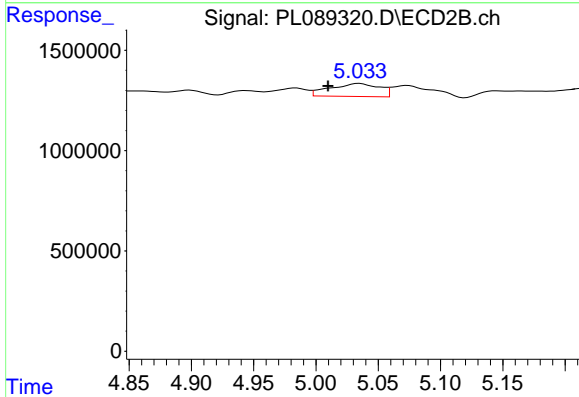
R.T.: 4.354 min
 Delta R.T.: -0.024 min
 Response: 3058326
 Conc: 48.08 ng/ml



#25 Chlordane-3

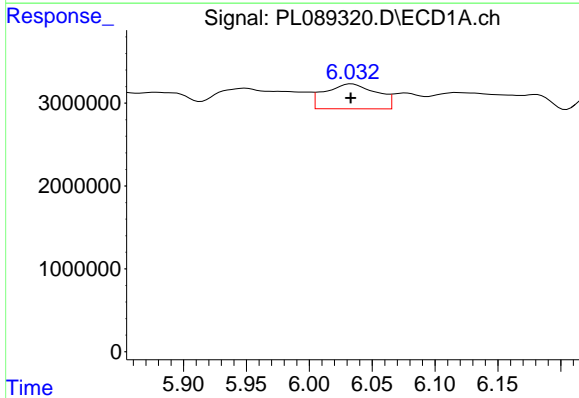
R.T.: 5.949 min
 Delta R.T.: -0.002 min
 Response: 10939709
 Conc: 33.12 ng/ml

Instrument :
 ECD_L
 ClientSampleId :
 PAT-DIS-02-05012024



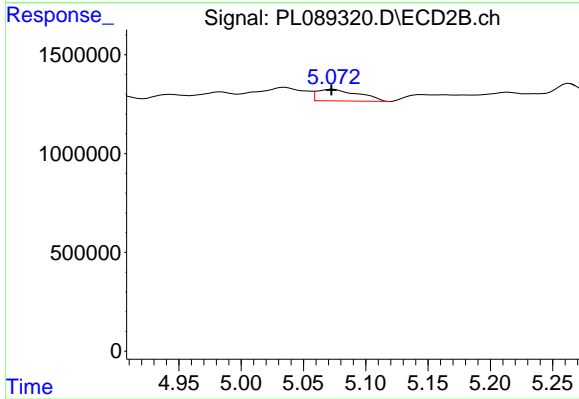
#25 Chlordane-3

R.T.: 5.035 min
 Delta R.T.: 0.025 min
 Response: 1787011
 Conc: 10.44 ng/ml



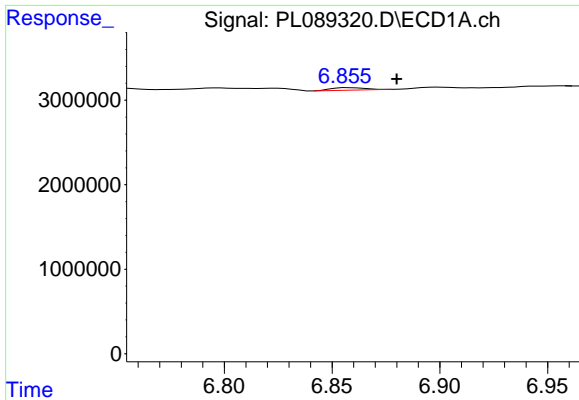
#26 Chlordane-4

R.T.: 6.034 min
 Delta R.T.: 0.000 min
 Response: 8598570
 Conc: 21.09 ng/ml



#26 Chlordane-4

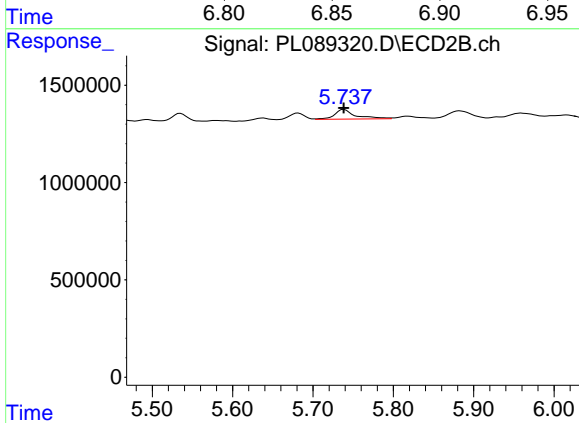
R.T.: 5.074 min
 Delta R.T.: 0.001 min
 Response: 1361501
 Conc: 8.46 ng/ml



#27 Chlordane-5

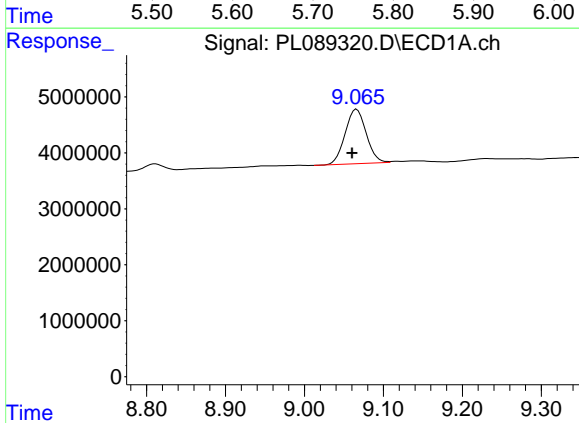
R.T.: 6.858 min
 Delta R.T.: -0.022 min
 Response: 327142
 Conc: 3.93 ng/ml

Instrument : ECD_L
 ClientSampleId : PAT-DIS-02-05012024



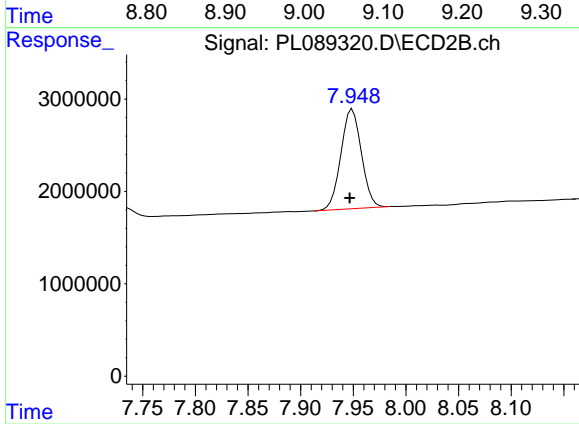
#27 Chlordane-5

R.T.: 5.739 min
 Delta R.T.: 0.000 min
 Response: 894135
 Conc: 17.47 ng/ml



#28 Decachlorobiphenyl

R.T.: 9.066 min
 Delta R.T.: 0.006 min
 Response: 18077521
 Conc: 12.92 ng/ml



#28 Decachlorobiphenyl

R.T.: 7.949 min
 Delta R.T.: 0.003 min
 Response: 14648633
 Conc: 10.89 ng/ml