

Data Path : Z:\pestpcbsrv\HPCHEM1\ECD_L\Data\PL050224\
 Data File : PL089327.D
 Signal(s) : Signal #1: ECD1A.ch Signal #2: ECD2B.ch
 Acq On : 02 May 2024 16:35
 Operator : AR\AJ
 Sample : P2330-05
 Misc :
 ALS Vial : 17 Sample Multiplier: 1

Instrument :
 ECD_L
 ClientSampleId :
 F-1(0.5-1.5)

Integration File signal 1: autoint1.e
 Integration File signal 2: autoint2.e
 Quant Time: May 02 23:06:30 2024
 Quant Method : Z:\pestpcbsrv\HPCHEM1\ECD_L\methods\PL042624.M
 Quant Title : GC Extractables
 QLast Update : Fri Apr 26 19:27:30 2024
 Response via : Initial Calibration
 Integrator: ChemStation

Volume Inj. : 1 µl
 Signal #1 Phase : ZB-MR2 Signal #2 Phase: ZB-MR1
 Signal #1 Info : 30M x 0.32mm x0.2 Signal #2 Info : 30M x 0.32mm x0.5µm

Compound	RT#1	RT#2	Resp#1	Resp#2	ng/ml	ng/ml

System Monitoring Compounds						
1) SA Tetrachlo...	3.551	2.797	25541968	15485018	12.684	12.069
28) SA Decachlor...	9.066	7.949	16071645	14108514	11.488	10.488
Target Compounds						
2) A alpha-BHC	4.002	3.330f	135585	155598	0.048	0.082 #
3) MA gamma-BHC...	4.344	3.650f	1328020	188373	0.477	0.102 #
4) MA Heptachlor	4.954f	3.975	9600319	9764516	3.871	5.572 #
5) MB Aldrin	5.297f	4.273f	37479329	25182520	14.593	14.245
6) B beta-BHC	4.511f	0.000	2582353	0	2.047	N.D. #
7) B delta-BHC	4.802f	4.173	9264179	4995734	3.493	2.777
8) B Heptachlo...	5.689	4.753	42084974	1360210	17.943	0.841 #
10) B gamma-Chl...	5.946	4.988f	15150385	20072852	6.628	12.233 #
11) B alpha-Chl...	6.035	5.078	31749536	20071618	13.958	12.171
12) B 4,4'-DDE	6.201	5.263	25680376	1751727	12.692	1.205 #
13) MA Dieldrin	6.349	5.396	587856	18078808	0.263	11.238 #
14) MA Endrin	6.584	5.676	24888147	530474	13.138	0.369 #
15) B Endosulfa...	6.799	5.951	659909	13230760	0.331	9.199 #
16) A 4,4'-DDD	6.730	5.815	7348240	191609	4.356	0.155 #
17) MA 4,4'-DDT	7.007f	6.064	12579572	7974154	6.841	5.894
18) B Endrin al...	6.945	6.162f	769547	928041	0.509	0.834 #
19) B Endosulfa...	7.180f	6.363	59459	1252186	0.033	0.903 #
20) A Methoxychlor	7.507	6.619f	314176	2166730	0.319	2.710 #
21) B Endrin ke...	7.626f	0.000	5460191	0	2.728	N.D. #
22) Mirex	8.128	7.056	1386785	1192752	0.892	0.874
23) Chlordane-1	4.713	3.800	6458034	3239795	70.734	65.847
24) Chlordane-2	5.238	4.381	13141568	8028959	125.046	126.211
25) Chlordane-3	5.946	4.988f	15150385	20072852	45.874	117.234 #
26) Chlordane-4	6.035	5.078	31749536	20071618	77.889	124.789 #
27) Chlordane-5	6.852f	5.739	18700915	5500767	224.714	107.483 #

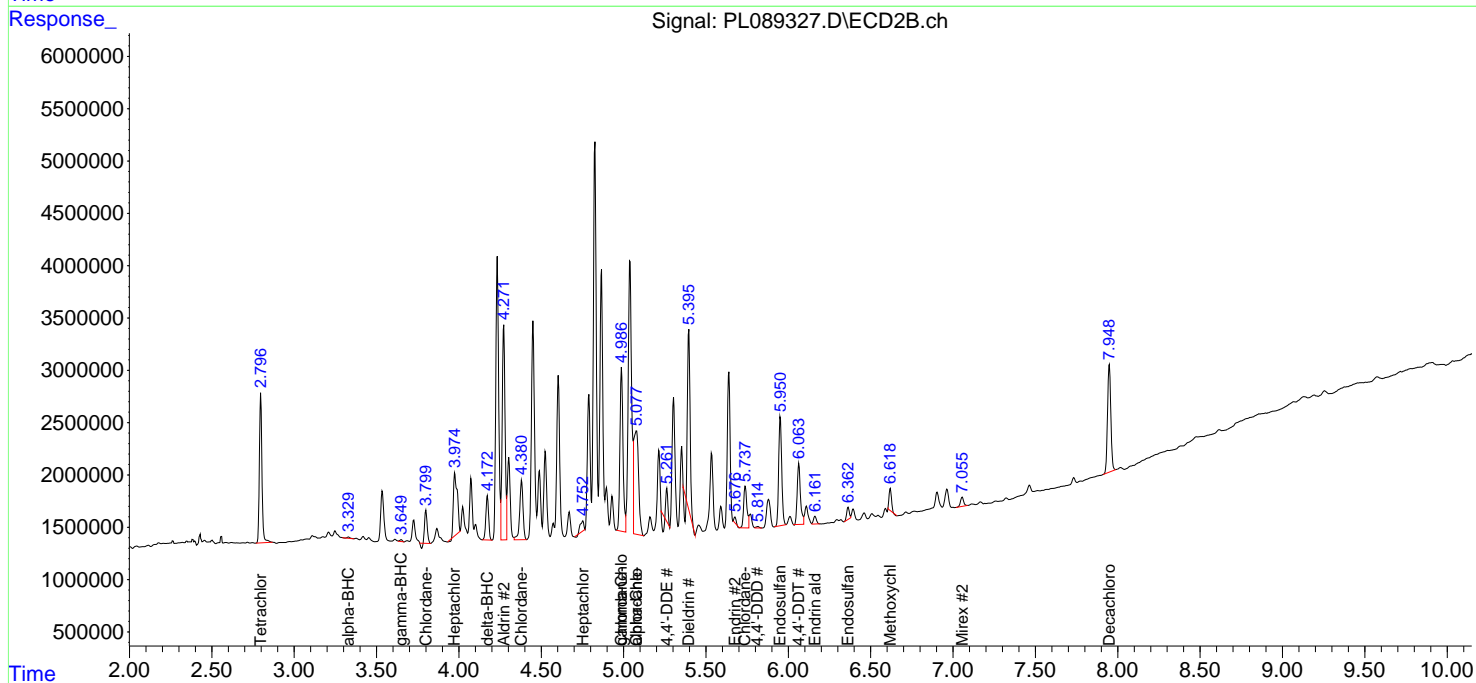
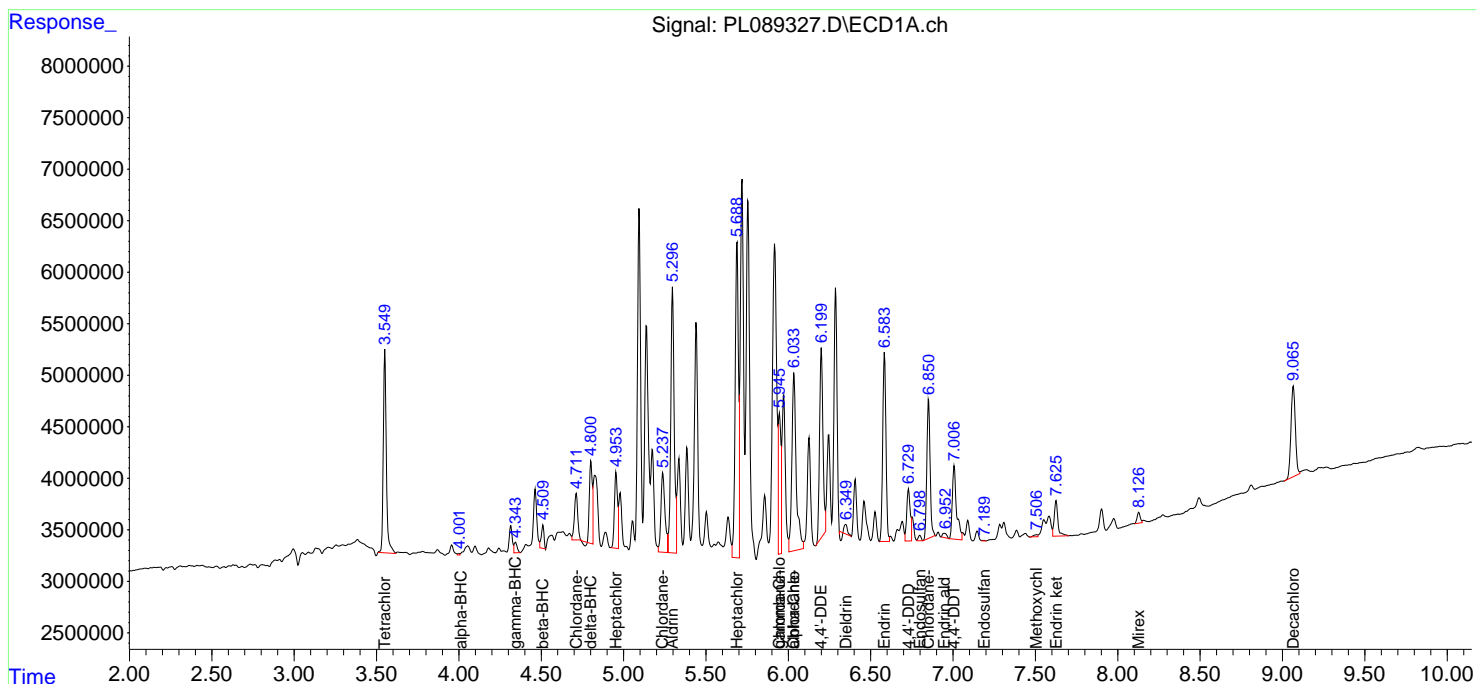
(f)=RT Delta > 1/2 Window (#)=Amounts differ by > 25% (m)=manual int.

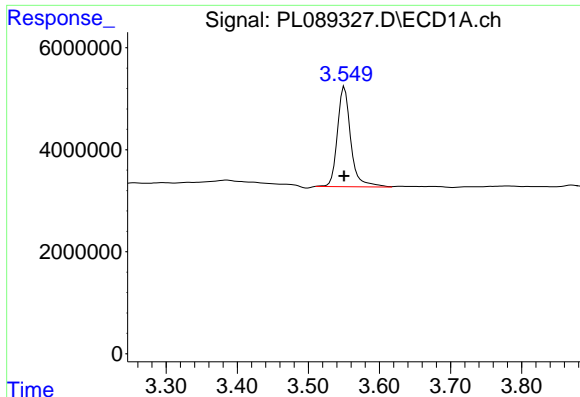
Data Path : Z:\pestpcbsrv\HPCHEM1\ECD_L\Data\PL050224\
 Data File : PL089327.D
 Signal(s) : Signal #1: ECD1A.ch Signal #2: ECD2B.ch
 Acq On : 02 May 2024 16:35
 Operator : AR\AJ
 Sample : P2330-05
 Misc :
 ALS Vial : 17 Sample Multiplier: 1

Instrument :
 ECD_L
 ClientSampleId :
 F-1(0.5-1.5)

Integration File signal 1: autoint1.e
 Integration File signal 2: autoint2.e
 Quant Time: May 02 23:06:30 2024
 Quant Method : Z:\pestpcbsrv\HPCHEM1\ECD_L\methods\PL042624.M
 Quant Title : GC Extractables
 QLast Update : Fri Apr 26 19:27:30 2024
 Response via : Initial Calibration
 Integrator: ChemStation

Volume Inj. : 1 µl
 Signal #1 Phase : ZB-MR2 Signal #2 Phase: ZB-MR1
 Signal #1 Info : 30M x 0.32mm x0.2 Signal #2 Info : 30M x 0.32mm x0.5µm

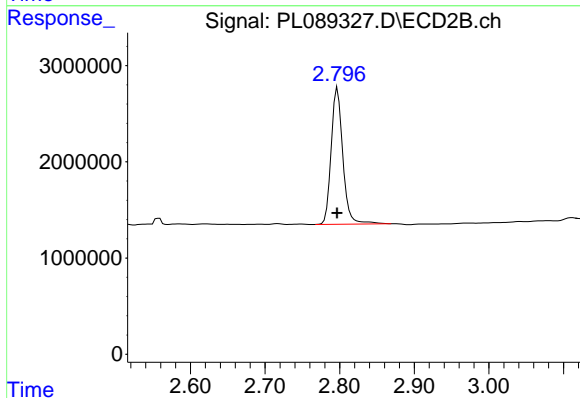




#1 Tetrachloro-m-xylene

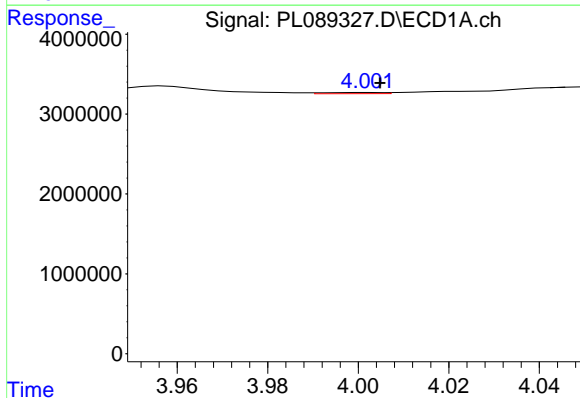
R.T.: 3.551 min
 Delta R.T.: 0.000 min
 Response: 25541968
 Conc: 12.68 ng/ml

Instrument :
 ECD_L
 ClientSampleId :
 F-1(0.5-1.5)



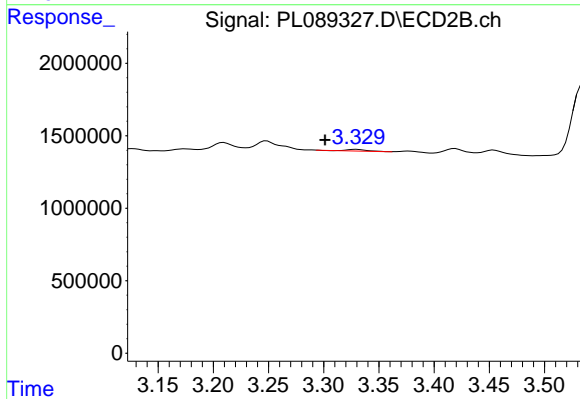
#1 Tetrachloro-m-xylene

R.T.: 2.797 min
 Delta R.T.: 0.000 min
 Response: 15485018
 Conc: 12.07 ng/ml



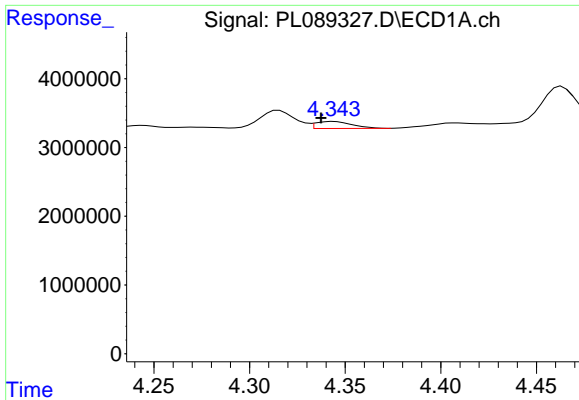
#2 alpha-BHC

R.T.: 4.002 min
 Delta R.T.: -0.002 min
 Response: 135585
 Conc: 0.05 ng/ml



#2 alpha-BHC

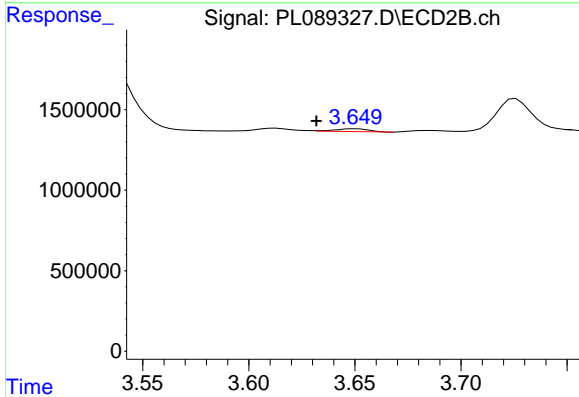
R.T.: 3.330 min
 Delta R.T.: 0.028 min
 Response: 155598
 Conc: 0.08 ng/ml



#3 gamma-BHC (Lindane)

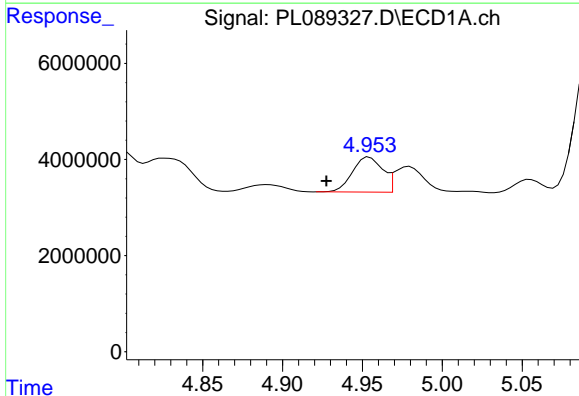
R.T.: 4.344 min
 Delta R.T.: 0.006 min
 Response: 1328020
 Conc: 0.48 ng/ml

Instrument :
 ECD_L
 ClientSampleId :
 F-1(0.5-1.5)



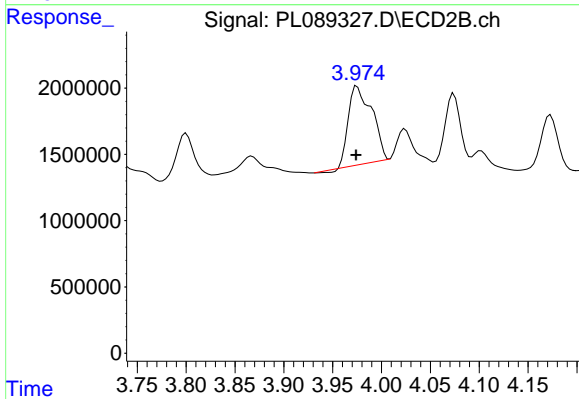
#3 gamma-BHC (Lindane)

R.T.: 3.650 min
 Delta R.T.: 0.018 min
 Response: 188373
 Conc: 0.10 ng/ml



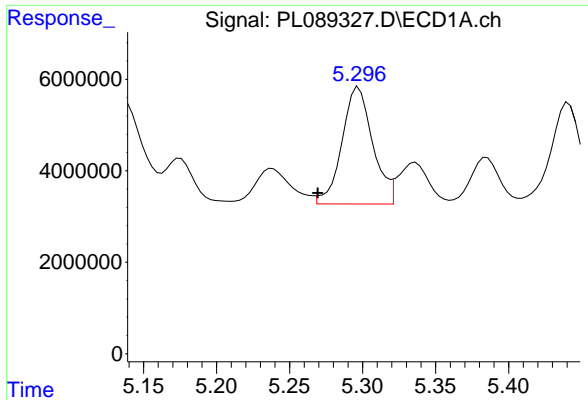
#4 Heptachlor

R.T.: 4.954 min
 Delta R.T.: 0.027 min
 Response: 9600319
 Conc: 3.87 ng/ml



#4 Heptachlor

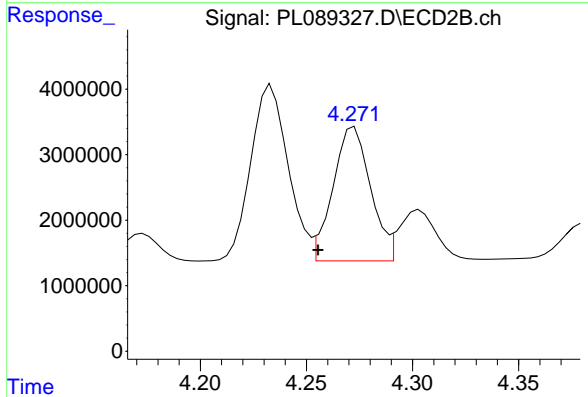
R.T.: 3.975 min
 Delta R.T.: 0.001 min
 Response: 9764516
 Conc: 5.57 ng/ml



#5 Aldrin

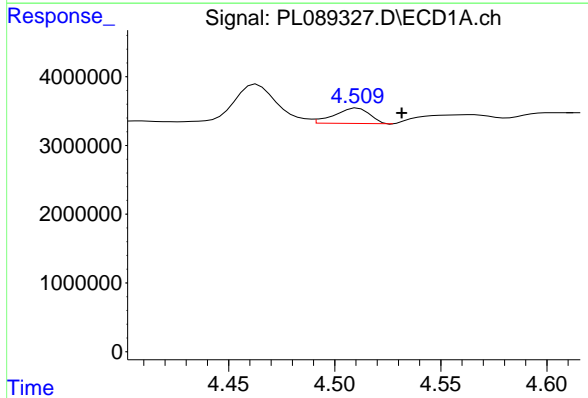
R.T.: 5.297 min
 Delta R.T.: 0.028 min
 Response: 37479329
 Conc: 14.59 ng/ml

Instrument :
 ECD_L
 ClientSampleId :
 F-1(0.5-1.5)



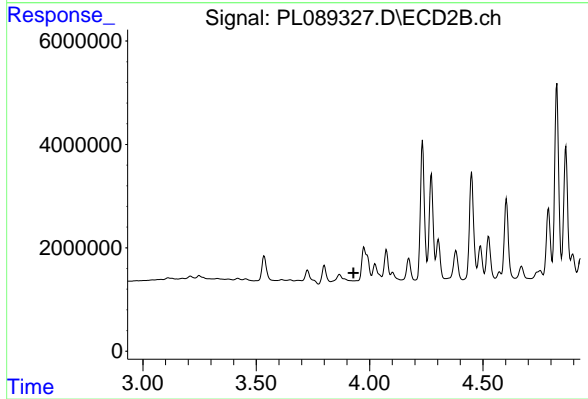
#5 Aldrin

R.T.: 4.273 min
 Delta R.T.: 0.017 min
 Response: 25182520
 Conc: 14.24 ng/ml



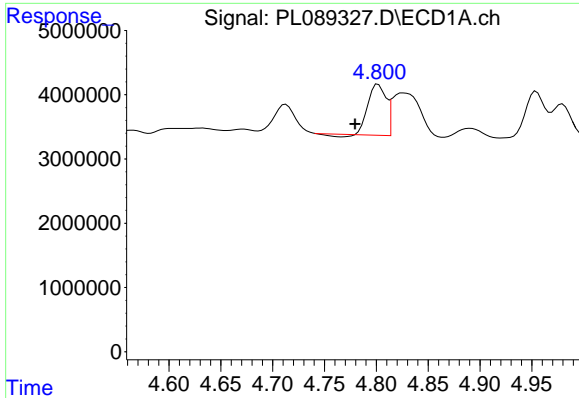
#6 beta-BHC

R.T.: 4.511 min
 Delta R.T.: -0.021 min
 Response: 2582353
 Conc: 2.05 ng/ml



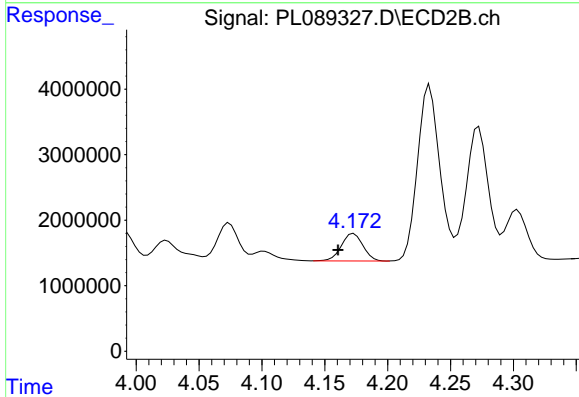
#6 beta-BHC

R.T.: 0.000 min
 Exp R.T. : 3.929 min
 Response: 0
 Conc: N.D.

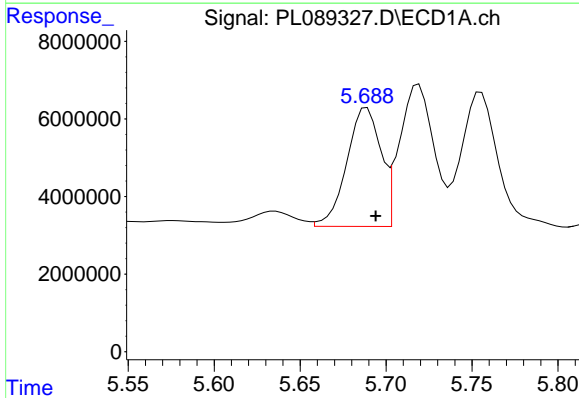


#7 delta-BHC
 R.T.: 4.802 min
 Delta R.T.: 0.023 min
 Response: 9264179
 Conc: 3.49 ng/ml

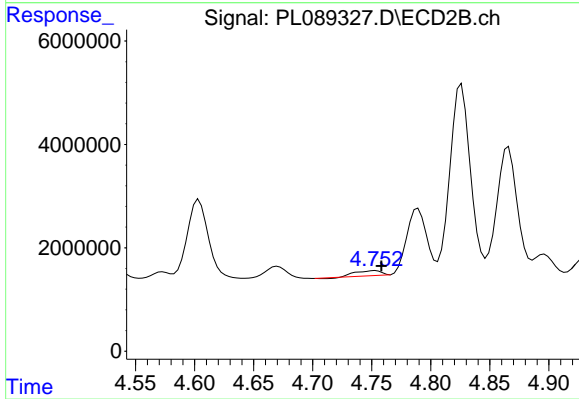
Instrument :
 ECD_L
 ClientSampleId :
 F-1(0.5-1.5)



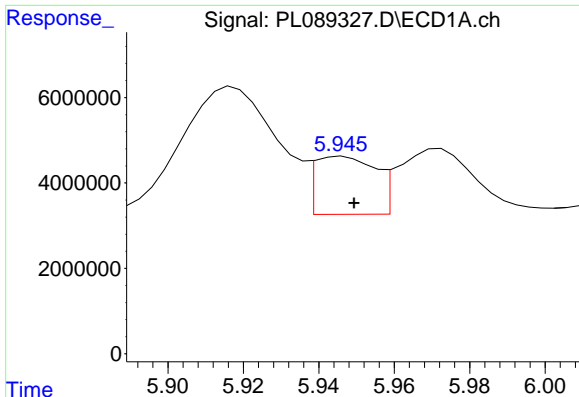
#7 delta-BHC
 R.T.: 4.173 min
 Delta R.T.: 0.012 min
 Response: 4995734
 Conc: 2.78 ng/ml



#8 Heptachlor epoxide
 R.T.: 5.689 min
 Delta R.T.: -0.005 min
 Response: 42084974
 Conc: 17.94 ng/ml



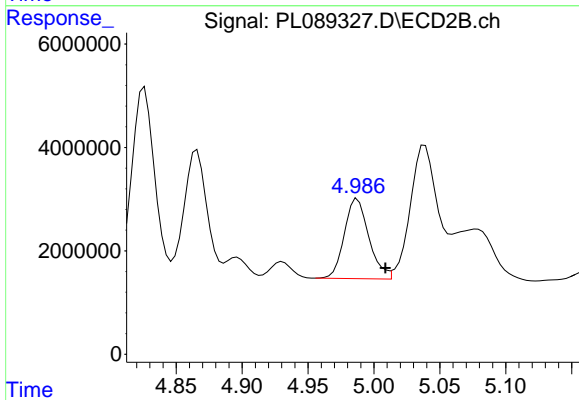
#8 Heptachlor epoxide
 R.T.: 4.753 min
 Delta R.T.: -0.005 min
 Response: 1360210
 Conc: 0.84 ng/ml



#10 gamma-Chlordane

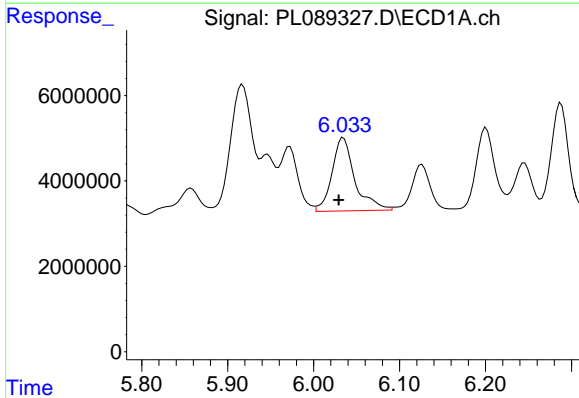
R.T.: 5.946 min
 Delta R.T.: -0.003 min
 Response: 15150385
 Conc: 6.63 ng/ml

Instrument :
 ECD_L
 ClientSampleId :
 F-1(0.5-1.5)



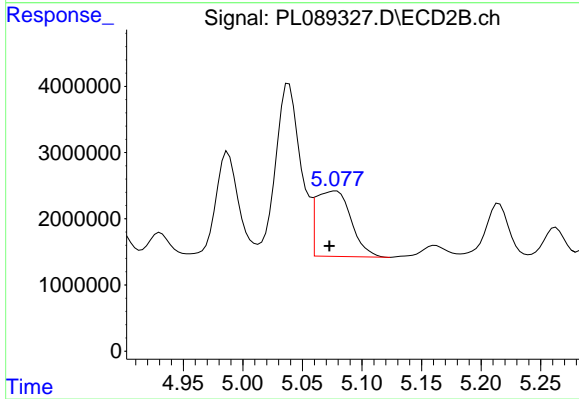
#10 gamma-Chlordane

R.T.: 4.988 min
 Delta R.T.: -0.021 min
 Response: 20072852
 Conc: 12.23 ng/ml



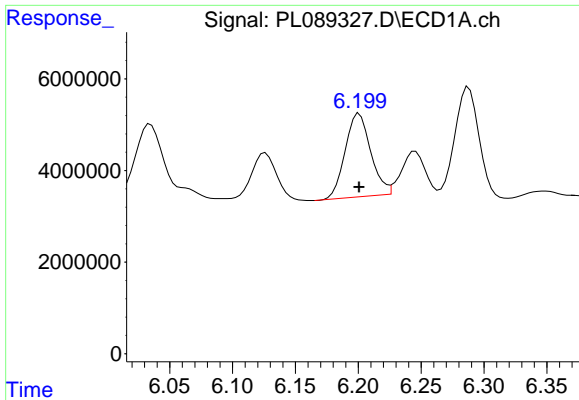
#11 alpha-Chlordane

R.T.: 6.035 min
 Delta R.T.: 0.006 min
 Response: 31749536
 Conc: 13.96 ng/ml



#11 alpha-Chlordane

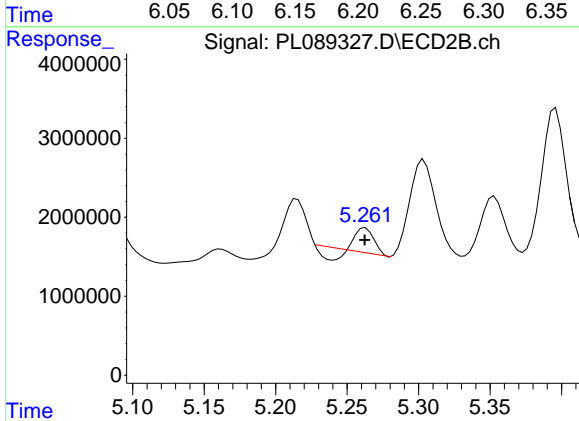
R.T.: 5.078 min
 Delta R.T.: 0.005 min
 Response: 20071618
 Conc: 12.17 ng/ml



#12 4,4'-DDE

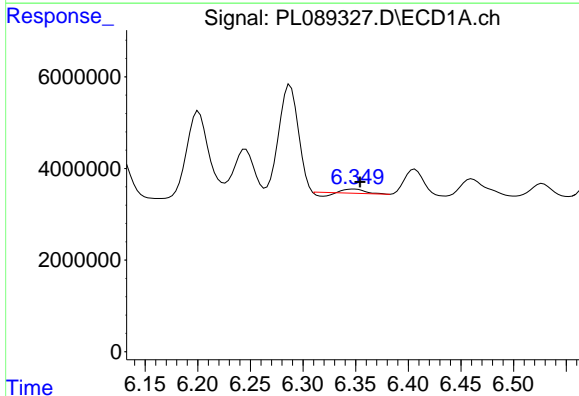
R.T.: 6.201 min
 Delta R.T.: 0.000 min
 Response: 25680376
 Conc: 12.69 ng/ml

Instrument :
 ECD_L
 ClientSampleId :
 F-1(0.5-1.5)



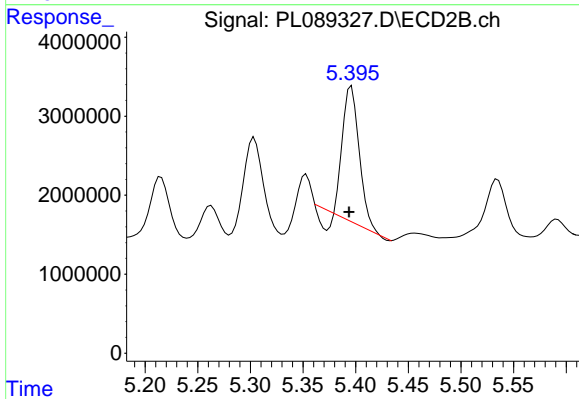
#12 4,4'-DDE

R.T.: 5.263 min
 Delta R.T.: 0.000 min
 Response: 1751727
 Conc: 1.20 ng/ml



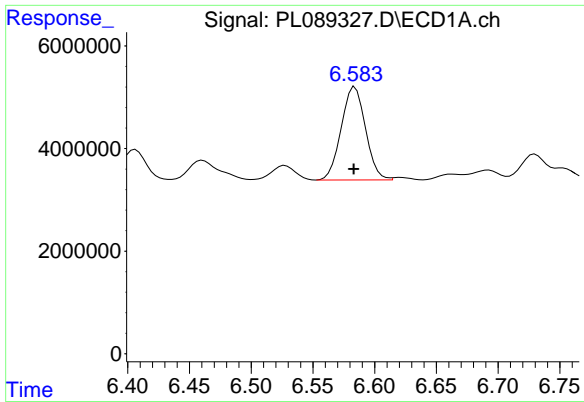
#13 Dieldrin

R.T.: 6.349 min
 Delta R.T.: -0.005 min
 Response: 587856
 Conc: 0.26 ng/ml



#13 Dieldrin

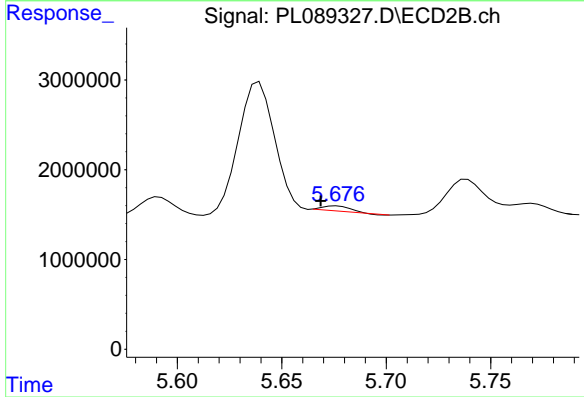
R.T.: 5.396 min
 Delta R.T.: 0.002 min
 Response: 18078808
 Conc: 11.24 ng/ml



#14 Endrin

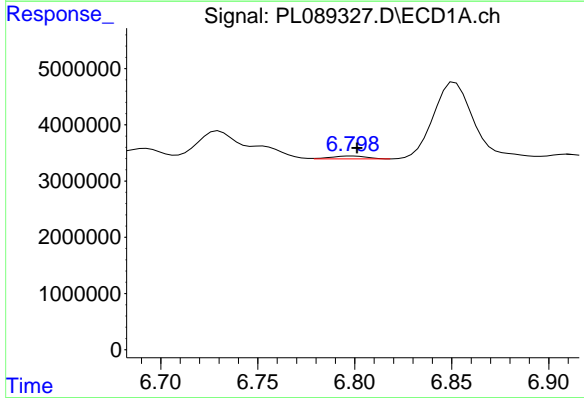
R.T.: 6.584 min
 Delta R.T.: 0.000 min
 Response: 24888147
 Conc: 13.14 ng/ml

Instrument :
 ECD_L
 ClientSampleId :
 F-1(0.5-1.5)



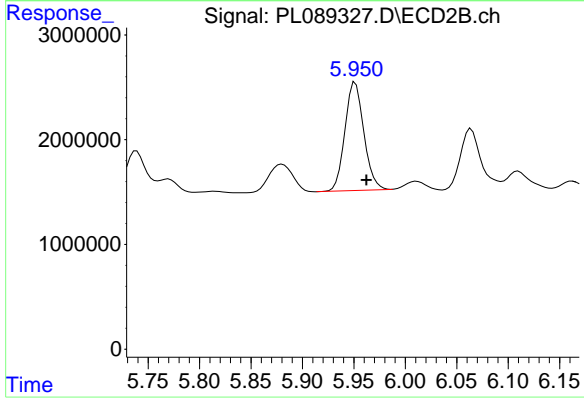
#14 Endrin

R.T.: 5.676 min
 Delta R.T.: 0.008 min
 Response: 530474
 Conc: 0.37 ng/ml



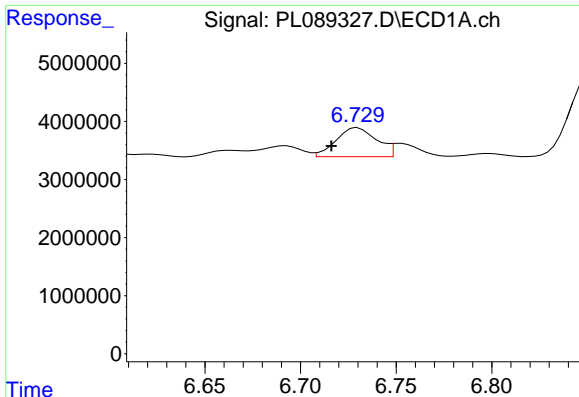
#15 Endosulfan II

R.T.: 6.799 min
 Delta R.T.: -0.002 min
 Response: 659909
 Conc: 0.33 ng/ml



#15 Endosulfan II

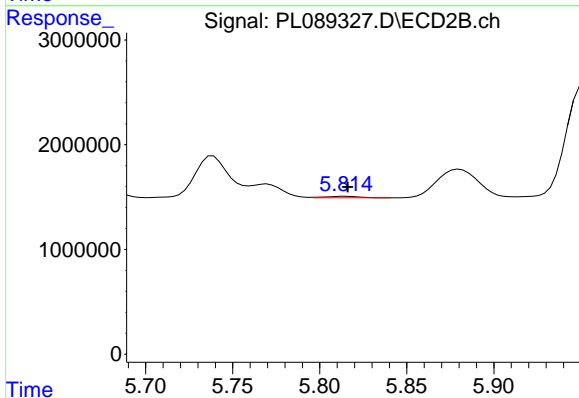
R.T.: 5.951 min
 Delta R.T.: -0.011 min
 Response: 13230760
 Conc: 9.20 ng/ml



#16 4,4'-DDD

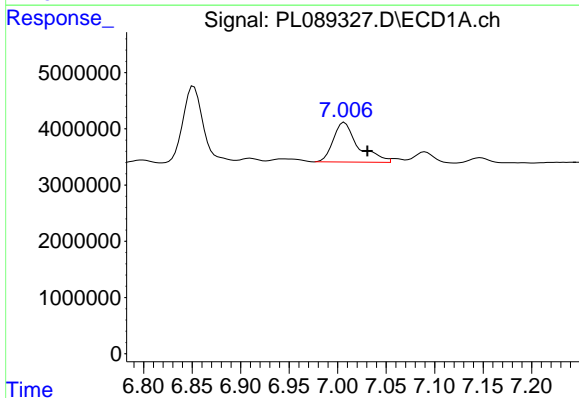
R.T.: 6.730 min
 Delta R.T.: 0.014 min
 Response: 7348240
 Conc: 4.36 ng/ml

Instrument :
 ECD_L
 ClientSampleId :
 F-1(0.5-1.5)



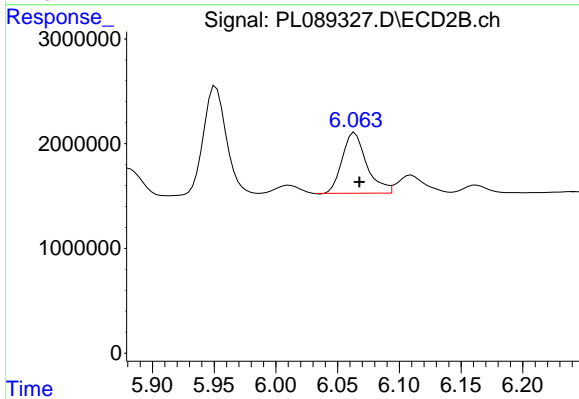
#16 4,4'-DDD

R.T.: 5.815 min
 Delta R.T.: 0.000 min
 Response: 191609
 Conc: 0.16 ng/ml



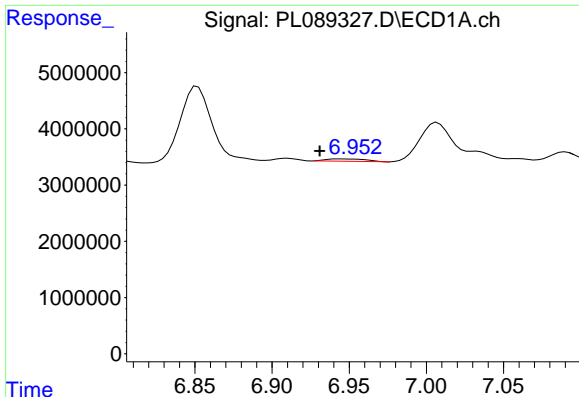
#17 4,4'-DDT

R.T.: 7.007 min
 Delta R.T.: -0.024 min
 Response: 12579572
 Conc: 6.84 ng/ml



#17 4,4'-DDT

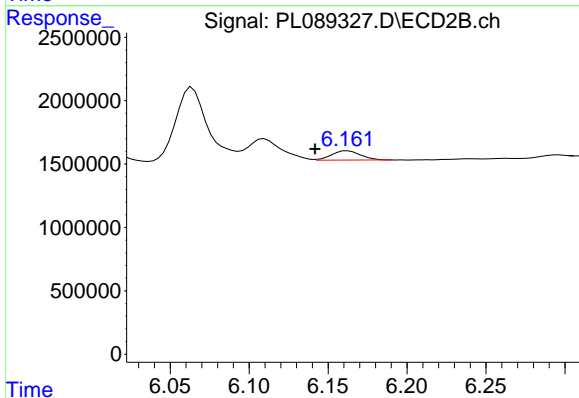
R.T.: 6.064 min
 Delta R.T.: -0.004 min
 Response: 7974154
 Conc: 5.89 ng/ml



#18 Endrin aldehyde

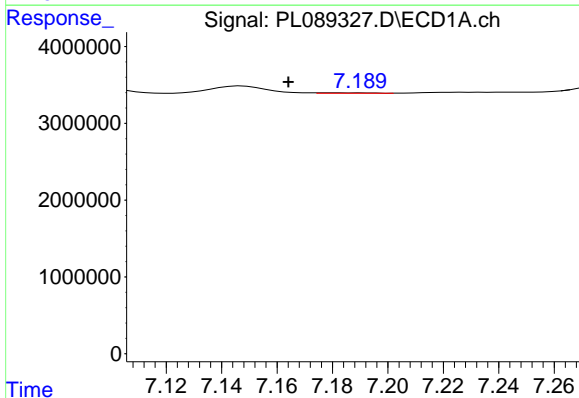
R.T.: 6.945 min
 Delta R.T.: 0.014 min
 Response: 769547
 Conc: 0.51 ng/ml

Instrument :
 ECD_L
 ClientSampleId :
 F-1(0.5-1.5)



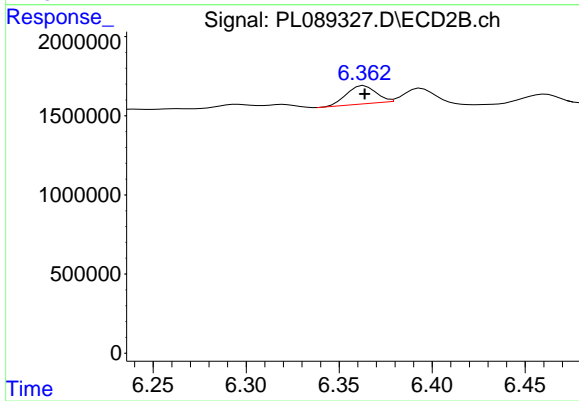
#18 Endrin aldehyde

R.T.: 6.162 min
 Delta R.T.: 0.020 min
 Response: 928041
 Conc: 0.83 ng/ml



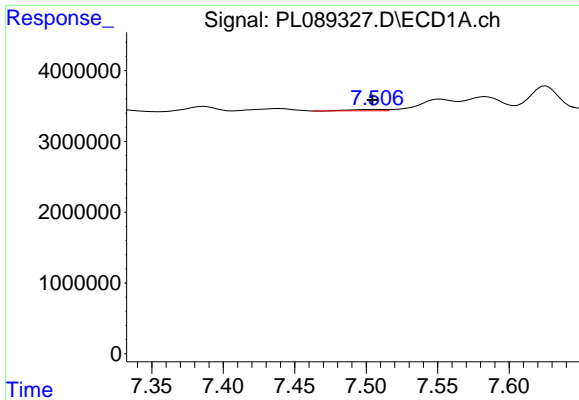
#19 Endosulfan Sulfate

R.T.: 7.180 min
 Delta R.T.: 0.016 min
 Response: 59459
 Conc: 0.03 ng/ml



#19 Endosulfan Sulfate

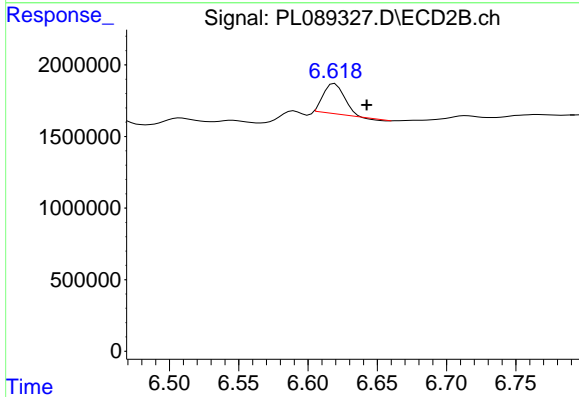
R.T.: 6.363 min
 Delta R.T.: 0.000 min
 Response: 1252186
 Conc: 0.90 ng/ml



#20 Methoxychlor

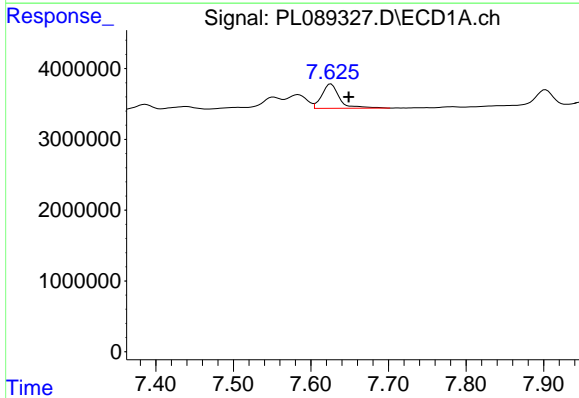
R.T.: 7.507 min
 Delta R.T.: 0.003 min
 Response: 314176
 Conc: 0.32 ng/ml

Instrument :
 ECD_L
 ClientSampleId :
 F-1(0.5-1.5)



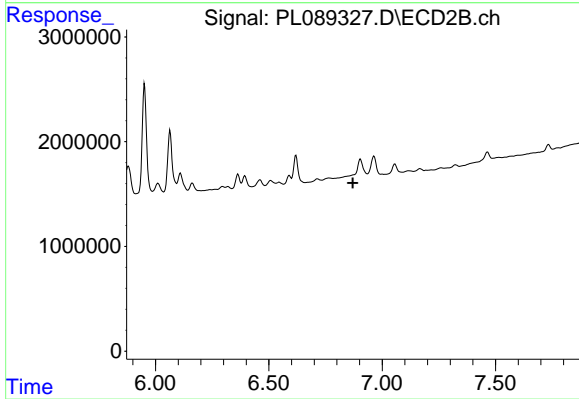
#20 Methoxychlor

R.T.: 6.619 min
 Delta R.T.: -0.023 min
 Response: 2166730
 Conc: 2.71 ng/ml



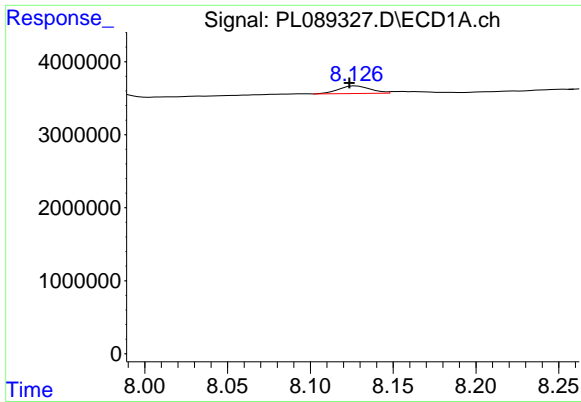
#21 Endrin ketone

R.T.: 7.626 min
 Delta R.T.: -0.023 min
 Response: 5460191
 Conc: 2.73 ng/ml



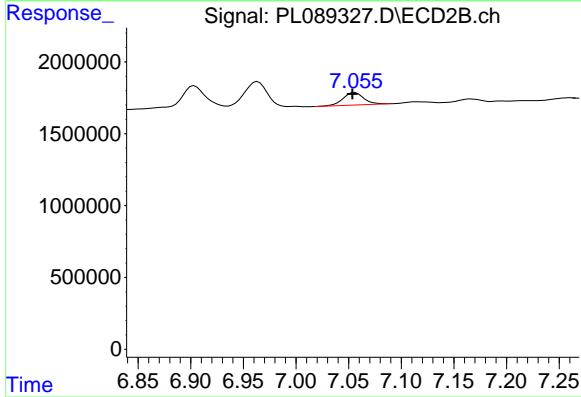
#21 Endrin ketone

R.T.: 0.000 min
 Exp R.T. : 6.871 min
 Response: 0
 Conc: N.D.

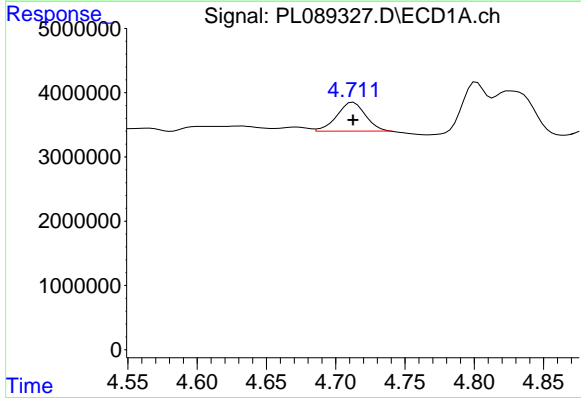


#22 Mirex
 R.T.: 8.128 min
 Delta R.T.: 0.004 min
 Response: 1386785
 Conc: 0.89 ng/ml

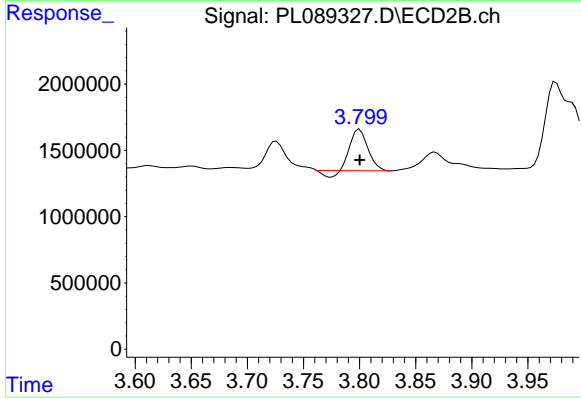
Instrument :
 ECD_L
 ClientSampleId :
 F-1(0.5-1.5)



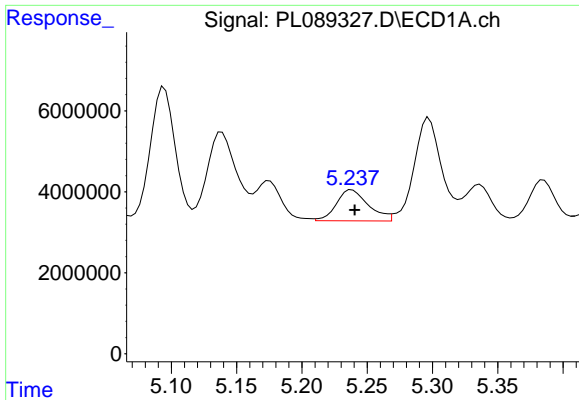
#22 Mirex
 R.T.: 7.056 min
 Delta R.T.: 0.002 min
 Response: 1192752
 Conc: 0.87 ng/ml



#23 Chlordane-1
 R.T.: 4.713 min
 Delta R.T.: 0.000 min
 Response: 6458034
 Conc: 70.73 ng/ml



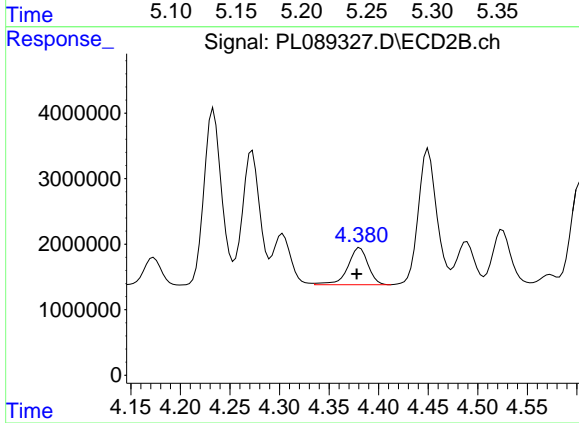
#23 Chlordane-1
 R.T.: 3.800 min
 Delta R.T.: 0.000 min
 Response: 3239795
 Conc: 65.85 ng/ml



#24 Chlordane-2

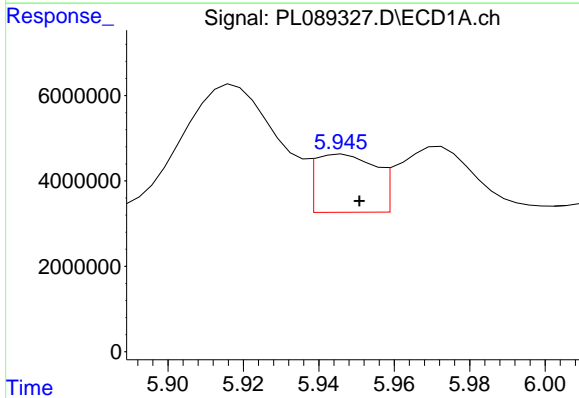
R.T.: 5.238 min
 Delta R.T.: -0.002 min
 Response: 13141568
 Conc: 125.05 ng/ml

Instrument :
 ECD_L
 ClientSampleId :
 F-1(0.5-1.5)



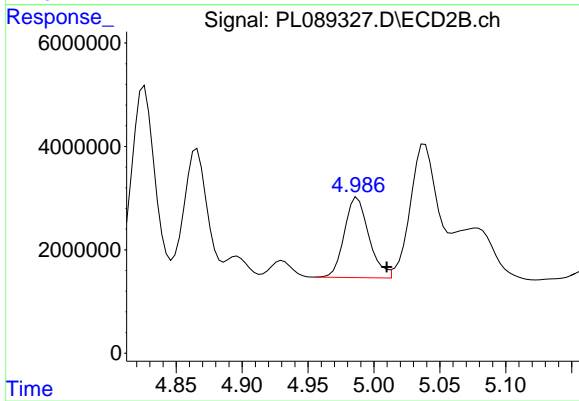
#24 Chlordane-2

R.T.: 4.381 min
 Delta R.T.: 0.003 min
 Response: 8028959
 Conc: 126.21 ng/ml



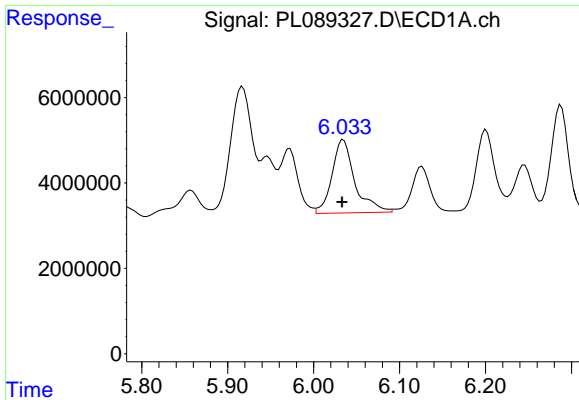
#25 Chlordane-3

R.T.: 5.946 min
 Delta R.T.: -0.004 min
 Response: 15150385
 Conc: 45.87 ng/ml



#25 Chlordane-3

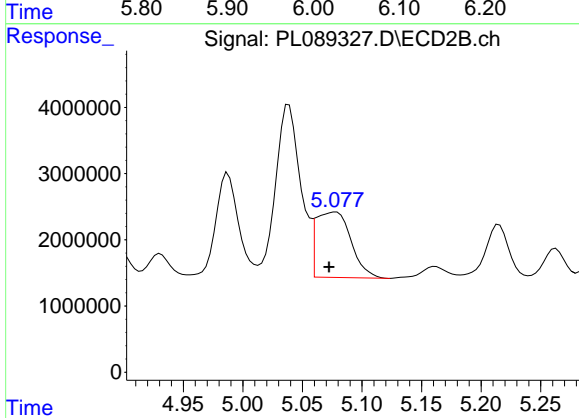
R.T.: 4.988 min
 Delta R.T.: -0.022 min
 Response: 20072852
 Conc: 117.23 ng/ml



#26 Chlordane-4

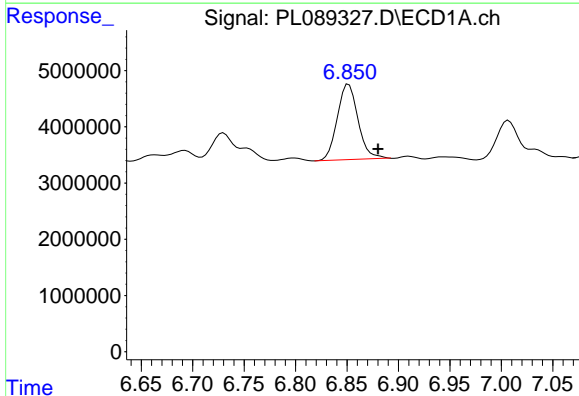
R.T.: 6.035 min
 Delta R.T.: 0.002 min
 Response: 31749536
 Conc: 77.89 ng/ml

Instrument :
 ECD_L
 ClientSampleId :
 F-1(0.5-1.5)



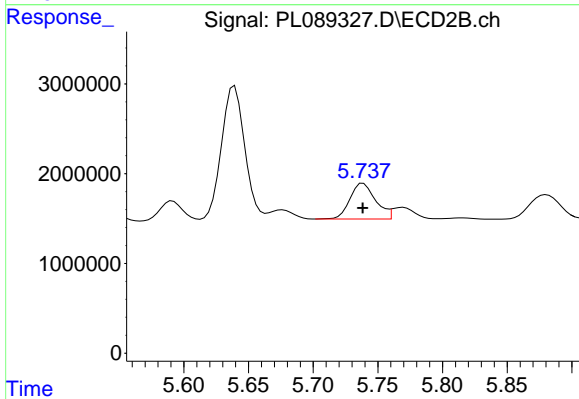
#26 Chlordane-4

R.T.: 5.078 min
 Delta R.T.: 0.006 min
 Response: 20071618
 Conc: 124.79 ng/ml



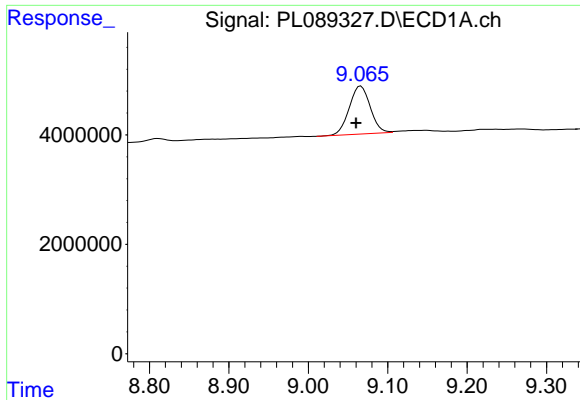
#27 Chlordane-5

R.T.: 6.852 min
 Delta R.T.: -0.028 min
 Response: 18700915
 Conc: 224.71 ng/ml



#27 Chlordane-5

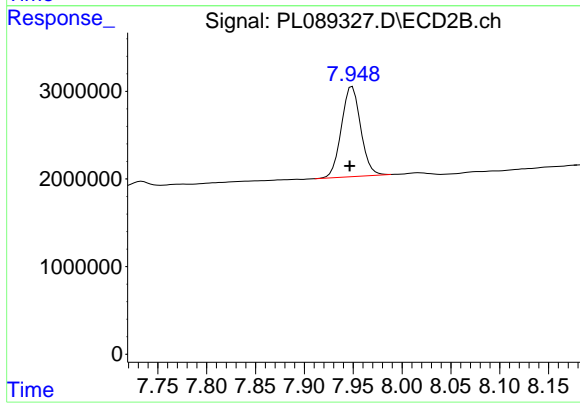
R.T.: 5.739 min
 Delta R.T.: 0.000 min
 Response: 5500767
 Conc: 107.48 ng/ml



#28 Decachlorobiphenyl

R.T.: 9.066 min
Delta R.T.: 0.006 min
Response: 16071645
Conc: 11.49 ng/ml

Instrument :
ECD_L
ClientSampleId :
F-1(0.5-1.5)



#28 Decachlorobiphenyl

R.T.: 7.949 min
Delta R.T.: 0.002 min
Response: 14108514
Conc: 10.49 ng/ml